

Epson Stylus® Photo 1280

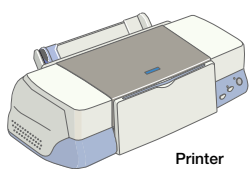
# Start Here



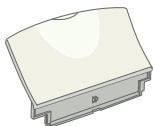
\*410083700\*

## 1 Unpack

1 Remove everything from the box.



Printer



Paper support



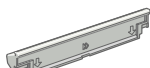
Printer Basics book



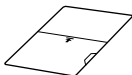
Printer Software CD-ROM



Roll paper holders



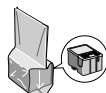
Paper support adapter



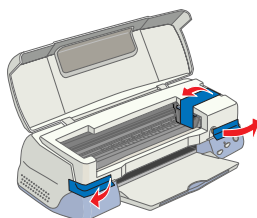
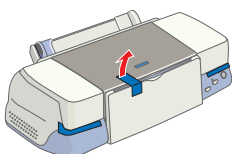
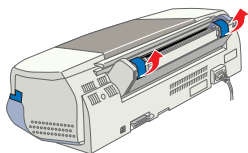
Uncurling sheet



Ink cartridges

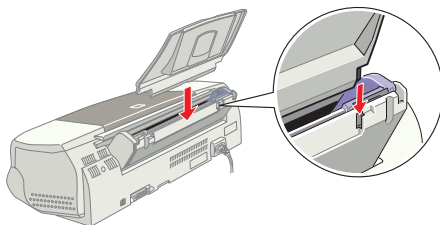


2 Remove all the tape and packing material. Be sure to check inside and all around the printer.





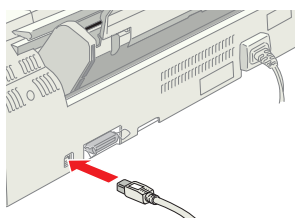
## 2 Put On the Paper Support

Insert the paper support into the slots on the back of the printer. (Don't place it in the paper feeder.)




## 3 Connect the Printer


- 1 Shut down your computer before attaching the cable.  
  
Leave the computer turned off until instructed to turn it on in section 7.
- 2 Connect the  square end of the USB cable to your printer's USB port.
- 3 Connect the  flat end of the cable to any open USB port on your computer.



## 4 Turn On the Printer

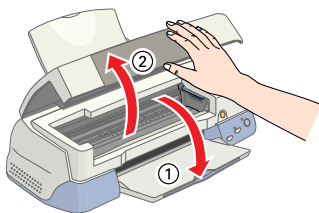
- 1 Plug the printer into a grounded electrical outlet.
- 2 Press the  power button to turn on the printer.

Don't turn on your computer yet.

**CAUTION:** Always use the  power button to turn the printer on or off. Never use an external switch, such as a power strip switch or wall switch.

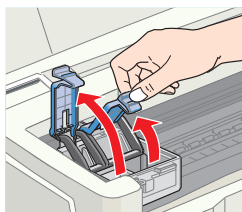
## 5 Install the Ink Cartridges

- 1 Lower the output tray and open the cover.



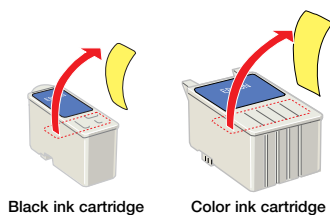
- 2 Lift up the two ink cartridge clamps.

**NOTE:** You must install both ink cartridges, or the printer won't work.

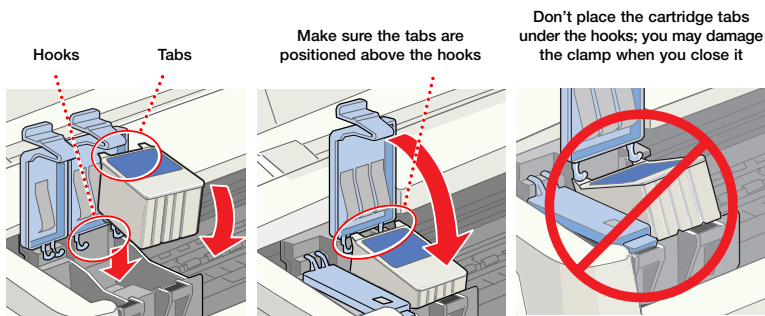


- 3** Unwrap the ink cartridges that came with your printer and remove the yellow tape.

**WARNING:** Keep cartridges out of the reach of children.

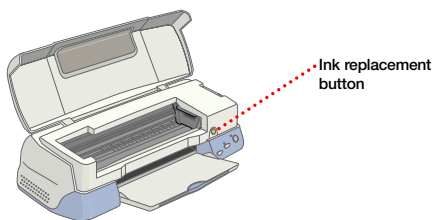



- 4** Tilt each cartridge toward you as you lower it. Make sure the tabs rest on the hooks.




- 5** Lower the clamps so they snap shut.

- 6** Press the yellow ink replacement button and close the printer cover.

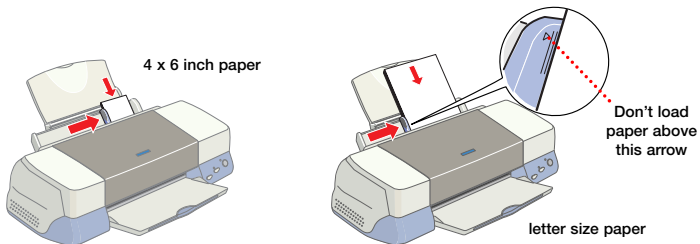


Ink charging takes about two minutes. You will see the  power light flash and hear the printer make noise. Don't turn off the printer during this process or you'll waste ink.

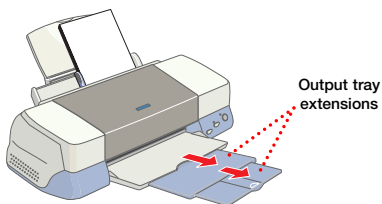
**CAUTION:** Never turn off the printer when the  power light is flashing, unless the printer hasn't moved or made any noise for more than 5 minutes.

## 6 Put in Paper

- 1** Load paper against the right side of the feeder, then slide the left edge guide up against it.




- 2** Pull out the output tray extensions.

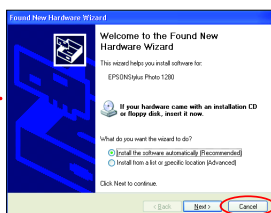


# 7 Install the Printer Software


## Windows®

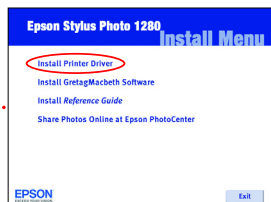
- 1 Make sure your printer is connected and turned off. Then turn on your computer and wait for Windows to start up.
- 2 Press the  power button to turn on your printer.  
If you see a New Hardware screen, click **Cancel**.
- 3 Insert the printer software CD-ROM in your CD-ROM or DVD drive.
- 4 When you see the Software License Agreement, read it and click **Agree**.
- 5 Click **Install Printer Driver** and wait while the printer software is installed.  

*NOTE: If you see a screen about turning on the printer, make sure the printer is connected and turned on and wait for the computer to detect the printer port.*
- 6 At the end of the driver installation, click **OK**.
- 7 Follow the on-screen instructions to install the ICC Color Profiles. Click **Finish** when done.
- 8 Click **Install GretagMacbeth Software** to try the program and install it if desired. When you finish, click **Back**.
- 9 Select **Install Reference Guide** to install the printer manual on your desktop.
- 10 Select **Share Photos Online at Epson PhotoCenter**, then click **Add Icon** to place a link to the web site on your desktop.
- 11 Click **Exit**. Register your printer with Epson® as instructed. Remove the CD-ROM and keep it in case you need to reinstall any software later.



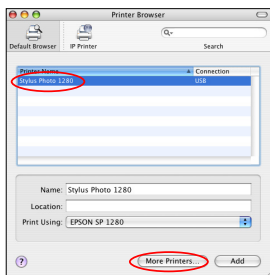
## Macintosh®

- 1 Make sure your printer is connected and turned on. Then turn on your Macintosh.
- 2 Insert your printer software CD-ROM in your CD-ROM or DVD drive.
- 3 Double-click the  Epson icon in the window that opens.
- 4 Read the License Agreement and click **Agree**.
- 5 Click **Install Printer Driver** and follow the on-screen instructions. (You may need to enter your administrator password.)
- 6 Click **Install GretagMacbeth Software** to try the program and install it if desired. When you finish, click **Back**.
- 7 Select **Install Reference Guide** to install the printer manual on your desktop.
- 8 Select **Share Photos Online at Epson PhotoCenter**, then click **Add Icon** to place a link to the web site on your desktop.
- 9 Click **Exit**. Register your printer with Epson as instructed. Remove the CD-ROM and keep it in case you need to reinstall any software later.
- 10 Now add the printer to the Printer Setup Utility or Print Center as described in the next section.

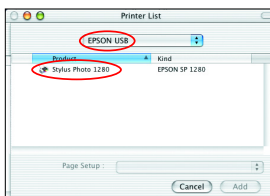


## Add the Printer to the Printer Setup Utility or Print Center

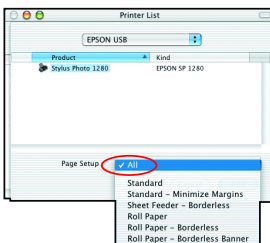
- 1 Open the **Applications** folder, then open the **Utilities** folder and select **Printer Setup Utility** or **Print Center**.
- 2 Click **Add**.
- 3 In OS X 10.4, select **Stylus Photo 1280** and click **More Printers**.



- 4 Select **EPSON USB** at the top of the screen and **Stylus Photo 1280** in the Product list.



- 5 Select **All** in the Page Setup menu.
- 6 Click **Add**.
- 7 Close **Printer Setup Utility** or **Print Center** and the **Utilities** folder.



# 8 Print a Photo

Now you're ready to print. For instructions, see:

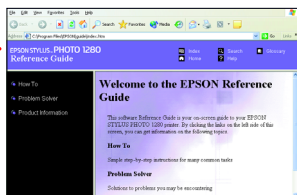
- Your *Printer Basics* book

Learn about loading paper, printing, maintaining your printer, solving problems, and contacting Epson.



- Your on-screen *Reference Guide*

Click the **Reference Guide** icon on your desktop to view additional information about your printer.



# Buying Ink and Paper

You can purchase genuine Epson ink and paper from an authorized Epson reseller. To find the nearest reseller, please call 800-GO-EPSON (800-463-7766). To purchase online, visit [www.epsonstore.com](http://www.epsonstore.com) (U.S. sales only). In Canada, please call (800) 463-7766 for reseller referral.

Here are the ink cartridges for your printer:



**T007201**  
Black ink cartridge



**T009201**  
Color ink cartridge

Here are three of many Epson papers designed to work with your printer:



## Borderless Premium Glossy Photo Paper

Water-resistant, photographic-weight paper featuring Epson's BorderFree® technology. This paper lets you print frame-ready photos in a matter of minutes.



## Semigloss Scrapbook Photo Paper

Ideal for printing photos with a satin finish. Acid free and buffered, these pages will last up to 60 years when stored in an album.



## Matte Paper Heavyweight

Professional-looking, flat matte finish for printing photos and graphics on a non-glossy surface. Perfect for digital fine art work.

# Getting Help

Epson provides technical assistance 24 hours a day through the electronic support services and automated telephone services listed below.

## World Wide Web

From the Internet, you can reach Epson support at <http://support.epson.com>.

At this site, you can download drivers and other files, look at product documentation, access troubleshooting information, and receive technical advice through e-mail.

## Automated Telephone Services

A variety of automated help services are available 24 hours a day, seven days a week. To use these services, you must have a touch tone telephone and call (800) 922-8911. Use the Epson SoundAdvice<sup>SM</sup> Express Code 68000 to quickly select your printer in SoundAdvice.

To speak to a technical support representative, dial:

- U.S.: (562) 276-7296, 6 AM to 8 PM, Pacific Time, Monday through Friday and 7 AM to 4 PM, Saturday.
- Canada: (905) 709-2567, 6 AM to 6 PM, Pacific Time, Monday through Friday.

Toll or long distance charges may apply. Before you call, please have the following information ready:

- Product name (Epson Stylus Photo 1280)
- Product serial number (located on the back of the printer)
- Proof of purchase (such as a store receipt) and date of purchase
- Computer configuration and operating system version
- Description of the problem

Epson and Epson Stylus are registered trademarks of Seiko Epson Corporation. BorderFree is a registered trademark, and Epson PhotoCenter, Epson Store, and SoundAdvice are service marks of Epson America, Inc.

General Notice: Other product names are for identification purposes only and may be trademarks of their respective owners. Epson disclaims any and all rights in those marks.