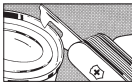
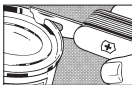


CAN OPENER



Place the opener on the can so that the hook gets a firm hold on the underside of the tin; then force the cutting-edge into the lid by gently raising the tool handle.



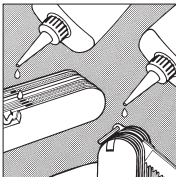
Important!
Keep the cutting-edge close to the rim.

CLOSING MULTI-TOOL

When closing, keep fingers away from the danger zone.



MAINTENANCE



Extend each implement halfway and apply a few drops of oil at the base of each implement. For implements that do not move easily, open and close a few times in warm water, then dry and oil. This care will ensure a lifetime of faithful service.

LIFETIME LIMITED WARRANTY

Victorinox guarantees all multi-tools to be of first class steel and provides a lifetime warranty against any defects in material and workmanship. The warranty does not apply to damage caused by abnormal or unreasonable use of any of the implements (including repairs or alterations other than by our Authorized Service Center).

This warranty gives you specific legal rights. Additional rights may be available under the laws of your State or Province. This warranty covers repair or replacement of the product but not consequential or other speculative damages.

REPAIRS

If your multi-tool has a manufacturer's defect covered by our warranty, we will either repair or replace it, at our option, without charge. Please send to the address below. Include your name, address, phone number and e-mail address (optional) with your repair. In California and other states so requiring, you may return the multi-tool through your place of purchase.

A damaged multi-tool not covered by the warranty can be repaired. Note that repair costs and handling charges may apply. If so, you will be notified prior to any service. Please send to the address below. Include your name, address, phone number and e-mail address (optional) with your repair.

**Service Center: Victorinox Swiss Army, Inc., Service Center
7 Victoria Drive, PO Box 1212, Monroe CT 06468-1212**

CUSTOMER SERVICE



Only when you see the name Victorinox stamped on the blade can you be assured you have the Original Swiss Army Knife.

Replacement Parts

Call customer service or visit our website at www.swissarmy.com to find an authorized dealer near you.
Customer Service • 1-800-442-2706

IMPORTANT SAFETY NOTICE

Careless or improper use of this product or use of its implements for purposes for which they are not intended, such as the use of a knife blade as a pry-bar, could result in serious injury. If knife is equipped with a locking device, be sure blade is locked before use. Please keep this product and all sharp or pointed implements away from children.

OUR LEGACY

In 1884, Karl Elsener opened his cutlery workshop in Ibach, Switzerland. In 1891, he obtained the first contract to supply the Swiss Army with a "Soldier's Knife." Six years later, he invented the "Swiss Officer's Knife" which was officially registered on June 12, 1897. Since that time, the Victorinox Original Swiss Army Knife has become well-known in more than 100 countries for precision, quality, functionality and versatility.

Enjoy your new Victorinox Original Swiss Army Knife. You will find it to be an invaluable companion.

06/09

VMS07025



VICTORINOX

SWISS ARMY KNIVES

OUR PRODUCTS

Inspired by our heritage, the Victorinox spirit has been captured by our designers in a broad range of inventive, classically designed products that break new ground in performance, versatility and value.

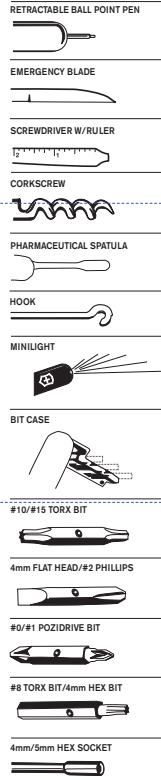
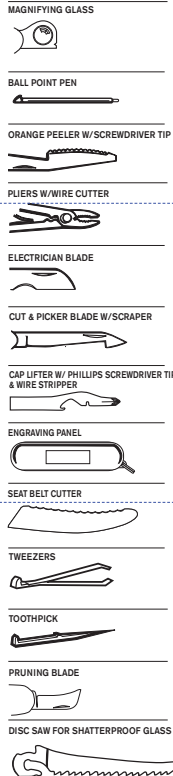
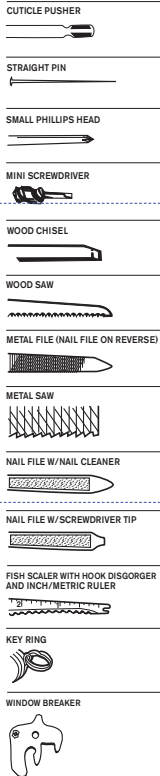
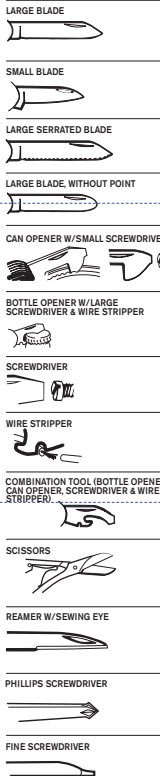
From our completely new line-up of Victorinox Swiss Army Timepieces, to our innovative line of Victorinox Travel Gear and Fashion, you'll find the uncompromising craftsmanship and attention to detail that make all of our products worthy to carry the Victorinox emblem.

For more information about our complete line of products, please visit our website at: www.swissarmy.com.

© Victorinox Swiss Army, Inc. 2009. All Rights Reserved.

VMS07025Rev.6/09

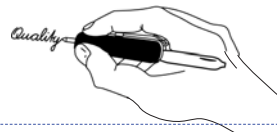
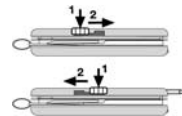
Guide to Implements



SPECIAL FEATURES (available on select models)

RETRACTABLE PEN

First push switch towards blades to release locking mechanism. Once this is done, the switch can move easily back and forth to extend or retract the pen. To ease pen use, open nail file to extend the length of the multi-tool.



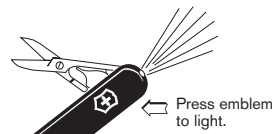
Replacing Ball Point Pen

Simply pull out empty ball point pen and click new one into place.



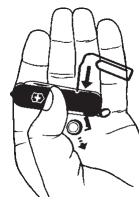
MINI LIGHT

Depress shield emblem to activate LED light.



Mini Light Battery Change For 58mm Knives with White Lights

- 1 Use a metal paper clip to push the worn battery into your open hand.
- 2 Carefully insert the new battery (1.55V 389E).
- 3 The positive side of the battery should be facing down.
- 4 Close the battery cover.



The battery will last approximately 2½ years under normal conditions. Be responsible: please recycle batteries.