



Font Card Kit User's Guide

(For use with Hewlett-Packard LaserJet 4014, 4015, and 4515 Series Printers)

Acknowledgements

Some of the TROY products include cryptographic software written by Eric Young (ey@cryptsoft.com)
The Twofish encryption/decryption source code used in the TROY Font Card is provided by Cryptopane.

TROY is a registered trademark. TROYmark™ and AutoProtect™ are registered trademarks of TROY Group, Inc. All rights reserved.

Microsoft Windows, PostScript, TrueType, LaserJet, and all other product names mentioned in this publication are trademarks or registered trademarks of their respective companies.

Information and descriptions contained herein are the property of TROY Group, Inc. Such information and descriptions may not be copied, disseminated, or distributed without the express written consent of TROY Group, Inc. This publication is subject to change without notice.

© 2003 – 2008 TROY Group, Inc.
Printed in the United States of America
June 2, 2008

Table of Contents

Preface

This manual is designed and formatted for use as an online document (viewed on your computer screen). For best results, use Adobe Acrobat Reader 7.0 or higher to view or print this document. Using earlier versions of Adobe Acrobat Reader to view or print this document may not produce a properly formatted document on your computer screen. The latest version of Adobe Acrobat Reader is available as a free download from the Adobe website at <http://www.adobe.com>.

Conventions

This User's Guide uses these conventions:

Bold indicates emphasis or a minor heading.

Italic refers to a document title or is used for emphasis.

COURIER type indicates text visible on a computer screen or keys on your computer keyboard.

The letter λ is used in examples to distinguish the small letter l from the numeral 1 (one).

The character Ø is used in examples to distinguish the letter O from the numeral 0 (zero).

<Esc>, <CR>, <LF>, <FF>, etc. are control characters. Use a text editor to enter the equivalent of the character. For example, to get <Esc> using a DOS text editor, hold down the **Ctrl** key; and press the **⌈** (left square bracket) key. Other text editors may vary.

NOTE: **Notes contain important information set off from the text.**

CAUTION: **Caution messages appear before procedures, which, if not observed, could result in loss of data or in damage to equipment.**

WARNING: ***Warning messages alert you to a specific procedure or practice, which, if not followed correctly, could cause serious personal injury.***

Table of Contents

Section 1 – Features Overview

Introduction	1-1
TROY Security Fonts.....	1-1

Section 2 – Using the TROY Printer Utility

Introduction	2-1
Menu Structure.....	2-1
Basic Printer Utility Operations	2-2
Printing Demo Pages.....	2-3
Accessing Fonts Using Non-Windows Applications.....	2-3
Verifying Windows Font Support.....	2-3
Verifying PCL 5e Communication	2-5
Downloading Files to the Printer	2-6
Obtaining Technical Assistance	2-8

Section 3 – Using TROY Fonts

Introduction	3-1
Accessing and Using TROY Fonts.....	3-1
Accessing the TROY Fonts Using Windows Applications.....	3-1
Accessing the TROY Fonts Using Non-Windows Applications.....	3-1
Using TROY MICR Fonts.....	3-2
Using the Convenience Amount Fonts.....	3-2
Using the TROY Security Fonts.....	3-2
Using the TROY OCR Fonts.....	3-2
Using the Reverse Helvetica Font	3-2
Using the TROY POSTNET Font.....	3-2
Using the British Pound and Euro Symbols	3-2
Using Printer Fonts and Screen Fonts.....	3-3

Table of Contents

MICR Font Guidelines	3-4
Font Character Mapping	3-5
Determining a Character Mapping	3-6
Accessing Unmapped Characters	3-6
Standard ASCII Character Set	3-7
TROY MICR E-13B 12-Point Font	3-8
TROY MICR CMC-7 12-Point Font	3-9
TROY Enhanced Convenience Amount (Scalable)	3-9
TROY Large Convenience Amount 18-Point Font	3-10
TROY Small Convenience Amount 24-Point Font	3-10
TROY Security Font	3-11
TROY Security Font (Spanish)	3-11
TROY Reverse Helvetica Font	3-12
TROY OCR-A Font (Scalable)	3-13
TROY OCR-B Font (Scalable)	3-15
TROY UPC-A Barcode	3-17
TROY UPC-E Barcode	3-18
TROY EAN-8 Barcode	3-19
TROY EAN-13 Barcode	3-20
TROY BC25 Barcode	3-21
TROY BC39 Barcode	3-22
TROY BC128 Barcode	3-23
TROY POSTNET	3-24
TROY POSTNET Reverse (optional)	3-25
International Convenience Amount Fonts	3-26
British Large Convenience Amount Font	3-26

Table of Contents

French Large Convenience Amount Font.....	3-26
Italian Large Convenience Amount Font.....	3-26
Spanish Large Convenience Amount Font	3-26
British Small Convenience Amount Font.....	3-27
French Small Convenience Amount Font	3-27
Italian Small Convenience Amount Font	3-27
Spanish Small Convenience Amount Font.....	3-27
PCL Font Collection.....	3-27
Section 4 – Troubleshooting / Error Messages	
Troubleshooting by Symptom	4-1
Software Uninstall Procedures.....	4-9
Uninstall the TROY Screen Fonts	4-9
Uninstall the TROY Support Files.....	4-9
Uninstall the TROY Printer Utility	4-10
Appendix – TROY Font Card Installation	
Installing the TROY Font Card.....	A-1

Introduction

Thank you for purchasing your TROY Font Card Kit. You have chosen the highest quality MICR (Magnetic Ink Character Recognition) printing solution available today that offers convenience, flexibility, and precision for printing high-quality MICR documents.

The TROY Font Card Kit includes the TROY Font Card and a specially formulated TROY MICR toner cartridge designed to meet or exceed all ANSI MICR printing standards. The TROY Font Card features an enhanced collection of MICR, OCR, and security fonts designed for printing financial documents. The TROY Font Card can be installed in a standard HP 4014, 4015, or 4515 LaserJet printer to provide MICR printing capabilities. Each TROY Font Card is designed for a specific HP printer and is not interchangeable between printer models. Refer to the ***TROY Font Card Kit Quick-Start Guide*** for information on installing the necessary TROY support files. Refer to the Appendix in this manual for installing the TROY Font Card into a compatible HP printer.

TROY Security Fonts

Your TROY Font Card Kit includes a collection of high-quality MICR fonts (E13-B, CMC-7) and other security fonts programmed into the TROY Font Card. See Section 3 – ***Using TROY Fonts*** for more information. The TROY Security font collection includes the following fonts:

TROY Font	Description
E13-B MICR Font	Used to print the MICR line at the bottom of the check (United States and selected countries)
CMC-7 MICR Font	Used to print the MICR line at the bottom of the check (if your bank of deposit requires this font)
Enhanced Convenience Font	Used to print the convenience amount information on the check (this font is scalable)
Large Convenience Font	Used to print the convenience amount information on the check (this font is non-scalable)
Small Convenience Font	Used to print the convenience amount information on the check (this font is non-scalable)
TROY Reverse Helvetica Font	Used to print names and addresses on the back of transparent envelope windows for use in pressure-seal machines
British Pound and Euro Currency Symbols	Used as the British or European currency symbol for the respective country (replaces the U.S. dollar sign). These symbols can be selected to print in the audit reports. The decimal point or comma (default) can be selected.
TROY Barcode and POSTNET Fonts	Used to print several types of industry-standard barcodes for a variety of uses, and also includes a POSTNET font for printing the U.S. postal bar code that represents the 9-digit zip code printed below the postal address
TROY Security Font	Used to print the amount information on the check (English / Spanish) (this font is scalable)
TROY OCR Font (type A and B)	Used to print any information (names, addresses, amounts) that is to be read by automated readers using optical character recognition (this font is scalable)
International Convenience Fonts	Used to print the convenience amount on the check in any one of five languages (available on the TROY Security Printing Solutions CD supplied with your TROY Font DIMM Kit)

Introduction

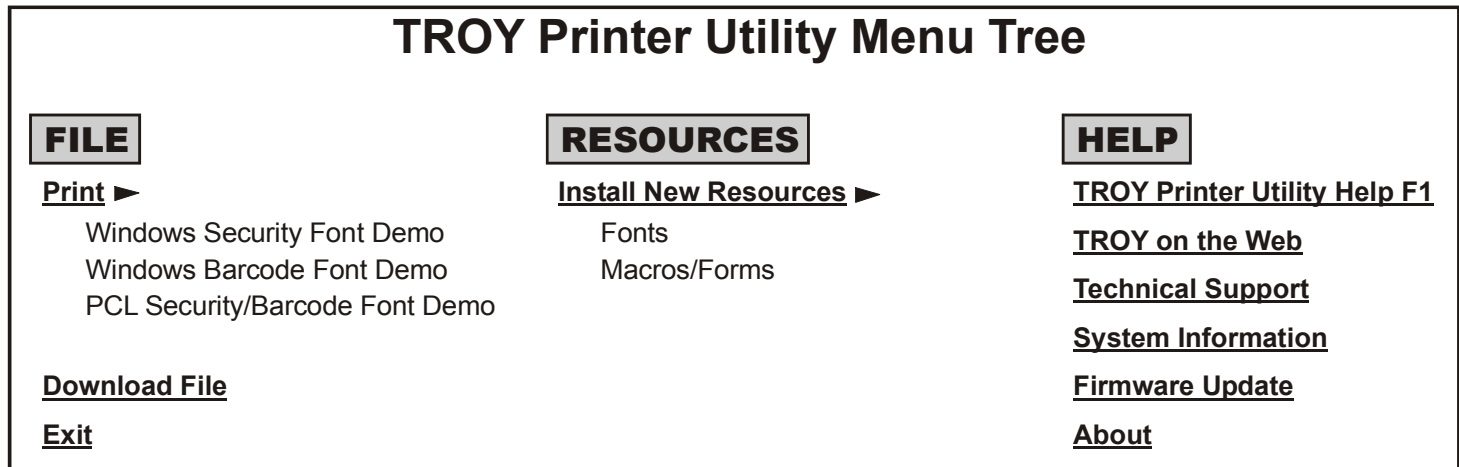
The TROY Printer Utility is an easy-to-use Microsoft Windows-based utility designed to assist you with the management of a TROY Font Card. The TROY Printer Utility allows the system administrator to perform the following functions:

- View system information
- Print Windows Security and Barcode demonstration pages
- Print PCL Security/Barcode Font demonstration page
- Obtain technical assistance
- Access the TROY Web site for printer firmware updates, drivers, and product/supplies information.

The TROY Printer Utility is included on the *TROY Font Card Kit* CD supplied with your TROY Font Card Kit. Follow the instructions in the *TROY Font Card Kit Quick-Start Guide* to install the TROY Printer Utility.

Menu Structure

The user-friendly features of the TROY Printer Utility are conveniently grouped under three pull-down menus as shown below. An arrow (▶) next to the menu selection indicates that additional selections are available for that menu item. It is suggested that you print out this page for use as a convenient reference when using the TROY Printer Utility.

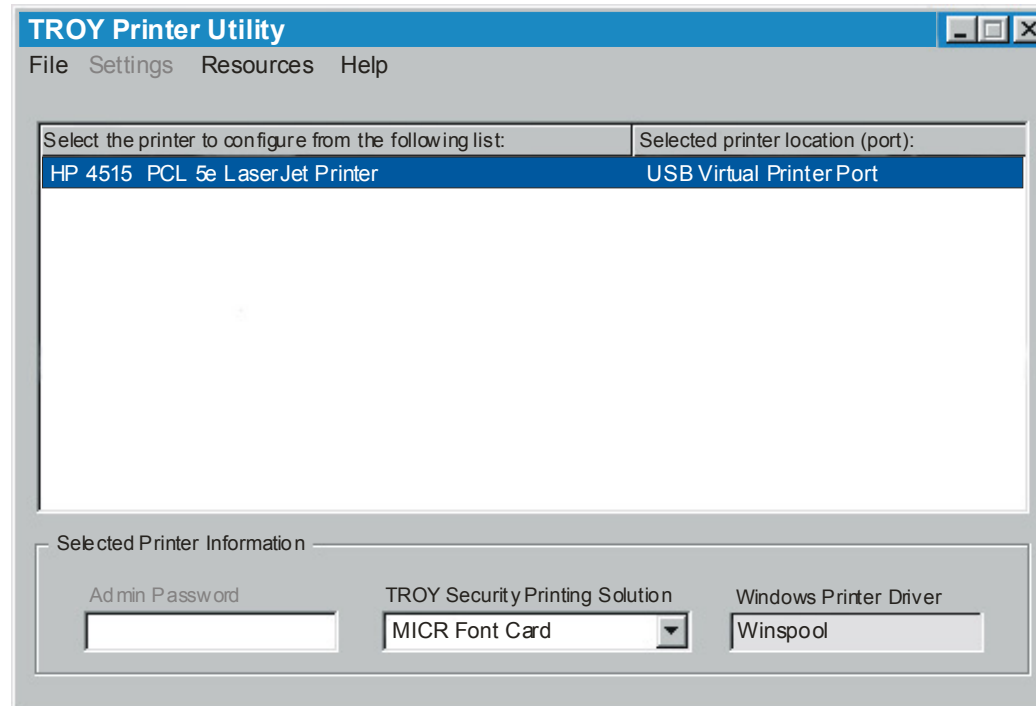


NOTE: The grayed-out menu items displayed in the TROY Printer Utility menus are for features that apply only to TROY printers and Hewlett-Packard printers that have the TROY MICR Secure DIMM installed.

Basic Printer Utility Operations

TO ACCESS THE TROY PRINTER UTILITY:

1. Click on the Microsoft Windows *Start* button, select *Programs, MICR by TROY*, and then click on the *TROY Printer Utility* icon. The Printer Utility main window will appear.
2. Click on the Hewlett-Packard printer you wish to manage.



3. Select MICR Font Card from the TROY Security Printing Solution drop-down menu. For convenience, this setting is saved when you exit the TROY Printer Utility. This option simplifies the TROY Printer Utility interface by allowing access to features that are only available within your product type.

Printing Demo Pages

The TROY Printer Utility provides the ability to generate a Windows Security Font, Windows Barcode Font, and PCL Security/Barcode Font demonstration page. Use the Windows Security Font demonstration page if you are using a Windows-based printing application, or use the PCL Security/Barcode Font demonstration page if you are using a non-Windows-based printing application. Use these demonstration pages to verify the TROY Security fonts generated by your printer.

Accessing Fonts Using Non- Windows Applications

If you are using a non-Windows application to print MICR documents, the escape sequence for each font must be programmed into the application in order to “call” each of the selected fonts. The <Esc> character is ASCII character number 27 (hexadecimal number 1B). Refer to Section 3 – *Using TROY Fonts* for the specific escape sequence (displayed above each character map) used to call each of the TROY fonts.

Verifying Windows Font Support

To verify that the TROY Windows font support files were properly installed on your system, demonstration documents are provided through the TROY Printer Utility in Windows that can be printed out to visually identify all security and/or barcode fonts downloaded to the TROY printer. Make sure your TROY printer is properly setup, powered ON, and is online before printing the Windows Security Font or Windows Barcode Font Demonstration page(s).

TO PRINT THE WINDOWS SECURITY (MICR) FONT DEMONSTRATION PAGE:

1. From the *Main Window*, click on the printer you wish to manage.
2. From the *Main Window*, click on *File, Print*, and then click on *Windows Security (MICR) Font Demo*. The printer will automatically print the Windows Security Font Demonstration page (see example on next page).
3. Compare the actual TROY security fonts (the actual fonts generated by your printing system) shown in the right-hand column with the facsimile image of these fonts printed in the center column (a digitized image designed to look exactly like the actual fonts generated by your system – see example on the next page).

If the support files were properly installed, the actual TROY security and/or barcode fonts displayed in the right-hand column should appear identical to the facsimile fonts displayed in the center column. If the actual fonts do not match the facsimile fonts printed on the demonstration document (fonts not printed correctly or fonts missing on the printout), review the installation steps in this document. If further assistance is required, contact TROY Technical Support.

Verifying Windows Font Support (cont.)

TROY Security Font Collection

Microsoft Windows Test Page

=====

This document displays how the TROY Security Font Collection should appear when printed through Microsoft Windows (Facsimile Font Image) and how they actually print through your Microsoft Windows printer driver configuration (Actual Printed Font) to a TROY Security Printing Solution.

Compare the fonts printed in the Facsimile Font Image column of this page to the fonts printed in the Actual Printed Font column. If the Windows support files (.HPD) were properly installed into the Hewlett Packard PCL 5e printer driver, the fonts in the two columns should match. If the fonts in both columns do not match (fonts in the Actual Printed Fonts column not printed correctly or missing from this page), review the Windows Support File installation steps in the user documentation. If further assistance is needed, please contact TROY Group Technical Support Department at 1-800-332-6427 or 1-949-250-3280, or e-mail techsupport@troypgroup.com.

Font Name	Facsimile Font Image	Actual Printed Font
TROY E-13B	1 2 3 4 5 6 7 8 9 0	1 2 3 4 5 6 7 8 9 0
TROY CMC7	1 2 3 4 5 6 7 8 9 0	1 2 3 4 5 6 7 8 9 0
TROY ECF	0 1 2 3 4 5 6 7 8 9 0 <small>ZERO ONE TWO THREE FOUR FIVE SIX SEVEN EIGHT NINE ZERO</small>	0 1 2 3 4 5 6 7 8 9 0 <small>ZERO ONE TWO THREE FOUR FIVE SIX SEVEN EIGHT NINE ZERO</small>
TROY LCF	1 2 3 4 5 6 7 8 9 0 <small>ONE TWO THREE FOUR FIVE SIX SEVEN EIGHT NINE ZERO</small>	1 2 3 4 5 6 7 8 9 0 <small>ONE TWO THREE FOUR FIVE SIX SEVEN EIGHT NINE ZERO</small>
TROY SCF	1 2 3 4 5 6 7 8 9 0 <small>ONE TWO THREE FOUR FIVE SIX SEVEN EIGHT NINE ZERO</small>	1 2 3 4 5 6 7 8 9 0 <small>ONE TWO THREE FOUR FIVE SIX SEVEN EIGHT NINE ZERO</small>
TROY HELV Rev	J53†201800	J53†201800
TROY MICRO	MP MP MP	MP MP MP
TROY OCRA	1234567890ABCD	1234567890ABCD
TROY OCRB	1234567890ABCD	1234567890ABCD
TROY Security	1234567890 <small>ONE TWO THREE FOUR FIVE SIX SEVEN EIGHT NINE ZERO</small>	1234567890 <small>ONE TWO THREE FOUR FIVE SIX SEVEN EIGHT NINE ZERO</small>

Verifying PCL 5e Communication

The PCL Security/Barcode Font demonstration page can be used to verify PCL 5e communication between the host computer and your printer. If the PCL 5 communication between the host computer and your printer is successful, then the selected demonstration page should print out exactly as shown in the example below.

TO PRINT THE PCL SECURITY/BARCODE FONT DEMONSTRATION PAGE:

1. From the *Main Window*, click on the printer you wish to access.
2. Type in the current administrator password in the password box at the bottom of the *Main Window*. If a password is not set, then leave the password box blank.
3. From the *Main Window*, click on *File, Print*, and then click on *PCL Security/Barcode Font Demo*. The printer will automatically print the PCL 5e Security/Barcode Font Demonstration pages (see example below).

TROY MICR FONTS

PCL 5e Font Demo Page (non-Microsoft Windows)

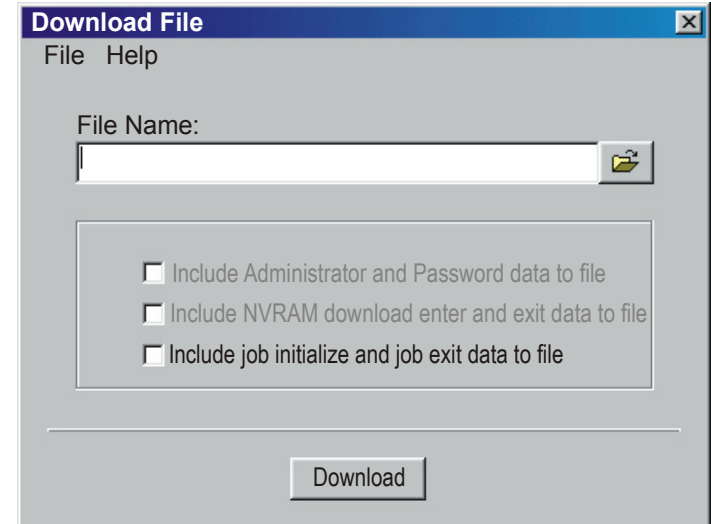
Font Name	PCL5e Font Call Escape Sequence	Print Example
TROY E-13 *	<esc>(0Q<esc>(s1p12.0v0s0b0T <esc>(0Q<esc>(s0p8.00h8.8v0s0b0T	1 2 3 4 5 6 7 8 9 0 1 2 3 4 5 6 7 8 9 0 1 2 3 4 5 6 7 8 9 0
TROY CMC7 *	<esc>(0Q<esc>(s1p12.0v0s0b1T <esc>(0Q<esc>(s0p8.00h8.8v0s0b1T	1 2 3 4 5 6 7 8 9 0 1 2 3 4 5 6 7 8 9 0 1 2 3 4 5 6 7 8 9 0
TROY ECF *	<esc>(3Q<esc>(s1p<height>v0s0b0T <esc>(3Q<esc>(s1p18v0s0b0T	1 2 3 4 5 6 7 8 9 0 1 2 3 4 5 6 7 8 9 0 1 2 3 4 5 6 7 8 9 0 \$ *
TROY LCF	<esc>(1Q<esc>(s0p5.01h16.0v0s0b0T	1 2 3 4 5 6 7 8 9 0 \$ € * ,
TROY SCF	<esc>(2Q<esc>(s0p6.00h22.0v0s0b0T	1 2 3 4 5 6 7 8 9 0 \$ € * ,
TROY Micro Font	<esc>(10U<esc>(s0p80h.8v0s33b0T	-----
TROY Helvetica (Rev)	<esc>(0Y<esc>(s1p<height>v0s33b24580T	1234567890ABCDEFGHIJKLMnopqrstuvwxyz
TROY OCR-A	<esc>(0O<esc>(s1p<height>v0s0b104T	1234567890ABCDEFGHIJKLMnopqrstuvwxyz
TROY OCR-B	<esc>(1O<esc>(s1p<height>v0s0b110T	1234567890ABCDEFGHIJKLMnopqrstuvwxyz
TROY Security	<esc>(4Q<esc>(s1p<height>v0s0b0T	1234567890 \$ € & ,

Downloading Files to the Printer

The TROY Printer Utility provides the ability to download any PCL or text file directly to the printer without embedding additional information. A download option is provided to enhance the download file (see the *Download File* window for the specific option). To include the advanced option to the download, place a checkmark next to the option. *The advanced download option is provided for advanced users only.*

TO DOWNLOAD A FILE TO THE PRINTER:

1. From the *Main Window*, click on the printer you wish to manage.
2. From the *Main Window*, click on *File*, and click on *Download File*.
3. Enter the file name or click on *Browse* to locate the desired file.
4. *For advanced users:* Place a checkmark next to the download option if you wish to include the additional data with the download file. *For normal use, it is recommended that the checkbox be left blank.*
5. Click on *Download* to send the file to the printer's memory. Click on *OK* to finish.
6. Click on *OK* to continue.

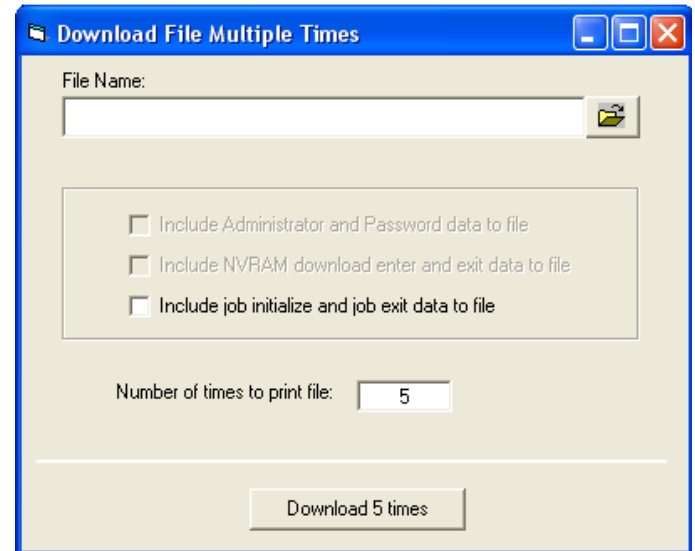


Downloading Files to the Printer (cont.)

The multiple download feature allows you to specify the number of times to download a single file to the printer without having to repetitively initiate the download process and respond to confirmation prompts. The multiple download feature is useful for testing purposes. To include the advanced option to the download, place a checkmark next to the option. *The advanced download option is provided for advanced users only.*

TO REPEATEDLY DOWNLOAD OF A FILE TO THE PRINTER:

1. From the *Main Window*, click on the printer you wish to manage.
2. Type in the current administrator password in the password box at the bottom of the *Main Window*. If a password is not set, then leave the password box blank.
3. From the *Main Window*, click on *File*, and click on *Multiple Download*.
4. Enter the file name or click on *Browse* to locate the desired file.
5. *For advanced users:* Place a checkmark next to the download option if you wish to include the additional data with the download file. *For normal use, it is recommended that the checkbox be left blank.*
6. Enter the number of times to download the file (the default is 5), and then click on *Download* to send the file to the printer's flash-file memory multiple times. Multiple downloads can be specified from 0 to 5000. Click on *OK* to finish.
7. Click on *OK* to continue.



Obtaining Technical Assistance

The TROY Printer Utility provides several help screens to guide you through the features and functions of your TROY Font Card. TROY technical support is available to assist you with any questions concerning the setup, operation, and maintenance of your TROY Font Card. Specific system information about the configuration of your TROY product is also available through the TROY Printer Utility. You are also encouraged to visit the TROY web site for latest FAQs (Frequently Asked Questions), information on the latest TROY products, and for ordering MICR toner and other printing supplies.

TO VIEW TECHNICAL SUPPORT INFORMATION:

From the *Main Window*, click on *Help*, and then click on *Technical Support* to view the TROY Technical Support HTML page for telephone numbers and hours of business.

TO VIEW INFORMATION ON THE TROY WEB SITE:

From the *Main Window*, click on *Help*, and then click on *TROY on the Web* to access the TROY web site. Click on the *Services and Support* button at the top of the web page to view the available topics. You can access the TROY web site directly at <http://www.troypgroup.com>.

TO VIEW ON-SCREEN HELP FOR THE TROY PRINTER UTILITY:

From the *Main Window*, click on *Help*, and then click on *TROY Printer Utility Help F1* to view the Printer Utility help documents. You can press the *F1* key at any time while using the TROY Printer Utility to access the help screens.

TO VIEW INFORMATION ABOUT THE PRINTER UTILITY:

From the *Main Window*, click on *Help*, and then click on *About* to view the version level and other information about the TROY Printer Utility.

TO VIEW SYSTEM INFORMATION:

From the *Main Window*, click on *Help*, and then click on *System Information* to view the version level and other information about your computer and printer's hardware and software environment.

Introduction

The TROY MICR E-13B and CMC-7 MICR fonts have been specifically engineered for your TROY Security Printing Solution to ensure the highest quality MICR printing in the industry. The TROY font collection provides seamless integration and security within your Windows-based check printing application. All TROY fonts are permanently programmed into the TROY Font Card to ensure consistent high-quality MICR printing and to prevent unauthorized use of these fonts on another printing system. Your TROY Security Printing Solution includes the following fonts:

- TROY MICR Font (E-13B and CMC-7)
- TROY Security Font (English and Spanish)
- TROY Convenience Fonts (Enhanced, Large and Small)
- TROY Reverse Helvetica Font
- TROY OCR Fonts (type A and B)
- British Pound and Euro symbols
- TROY POSTNET and Barcode Fonts (not available for TROY 2300 Font DIMM Kits)

Accessing and Using TROY Fonts

The following paragraphs provide some basic information for accessing and using the TROY fonts. It is important that these fonts are kept secure to prevent unauthorized use and that the fonts remain unaltered to ensure accurate rendering by your printer. All TROY fonts are permanently programmed into the TROY Font Card and cannot be directly accessed through external means.

Accessing TROY Fonts Using Windows Applications

To access the TROY fonts in a Windows environment, you must first install the Windows printer driver for your HP 4014, 4015, or 4515 LaserJet printer. Follow the instructions in *TROY Font Card Kit Quick-Start Guide* to install the printer driver and Windows support files, enabling you to select these fonts from any Windows-based application. To print the TROY E13-B and CMC-7 MICR fonts, your printer must be set to MICR enabled mode, and a TROY MICR toner cartridge must be installed in the printer. Many commercial MICR check-printing applications are pre-programmed to access the TROY MICR fonts.

Accessing TROY Fonts Using Non-Windows Applications

If you are using a non-Windows application to print MICR documents, the escape sequence for each font must be programmed into your check-printing application in order to “call” each of the selected fonts. The <Esc> character is ASCII character number 27 (hexadecimal number 1B). Refer to the end of this section for each escape sequence (displayed above each character map) used to call each TROY font.

Using the TROY E-13B MICR Font

The E-13B MICR font (TROY E-13B) can be used for printing the MICR line in many countries, including the United States. In some European and Latin American countries, the CMC-7 MICR font is used instead. TROY can provide customer support for your MICR applications only if you use the supplied TROY MICR fonts.

Using the TROY CMC-7 MICR Font

The CMC-7 MICR font (TROY CMC-7) can be used for printing the MICR line in many countries, including some European and Latin American countries. TROY can provide customer support for your MICR applications only if you use the supplied TROY MICR fonts.

Using the Convenience Amount Fonts

Your TROY Security Printing Solution includes a large, small and enhanced convenience amount font (TROY ECF, TROY LCF, TROY SCF). These fonts consist of numbers with their alphabetic spellings placed directly below the numerical character. These fonts are designed for use in the **Legal Amount** field only (located directly below the **Payee** field). You can enter alphanumeric symbols representing the amount of the check into this field.

Using the TROY Security Font

The TROY Security font (TROY SECURITY, TROY SECURITY SPANISH) is designed to prevent fraudulent alteration to the **Amount** field on the check. The font consists of numbers with their alphabetic spellings placed directly below the numerical character with a wavy lined pattern running through each character. These fonts are designed for use in the **Legal Amount** field only (located directly below the **Payee** field on the check). You can enter numeric symbols representing the amount of the check into this field. During document processing, convenience amounts may be visually read and encoded on the check by bank personnel. In this case, a large **Convenience Amount** font may best meet your bank's requirements.

Using the TROY OCR Fonts

The TROY OCR fonts (TROY OCR-A AND TROY OCR-B) are used to print any information (names, addresses, amounts) on the check that is to be read by automated readers using optical character recognition.

Using the Reverse Helvetica Font

The TROY Reverse Helvetica font is used to print names and addresses on the back of transparent envelope windows for use in pressure-seal machines.

Using the TROY POSTNET Font

The POSTNET (Postal Numeric Encoding Technique) font (TROY POSTNET) is used to represent the nine-digit postal zip code below the postal address line. Using the POSTNET font on your mailing envelopes and postcards will significantly decrease postal processing time and reduce the chance of errors when manual data entry is required at the post office.

Using the British Pound and Euro Symbols

The British Pound and European currency symbols are used in place of the U.S. dollar sign for the respective European country and can be selected to print in the audit reports. A decimal point or comma can be selected for use with these currency symbols.

Section 3

Using Printer Fonts and Screen Fonts

In addition to the TROY *printer* fonts that are permanently programmed into the TROY Font Card, the TROY *screen* fonts have been developed for screen display use only as a visual reference and for making positional adjustments to the MICR line. The TROY *screen* fonts display differently than the actual *printer* fonts in order to prevent unauthorized printing using the MICR *screen* fonts on other Windows-installed printers.

If the E-13B MICR *screen* font is used for printing, the inversely printed (white characters on a black background) MICR *screen* font will not be readable by the bank reader/sorter machines. The uniquely displayed *screen* fonts ensure that the MICR font printed on your MICR documents is generated by the TROY Font Card and not by the Windows operating system using the resident TrueType™ font. The TROY *screen* fonts are provided on the **TROY Font Card Kit** CD supplied with your TROY product.

Using TROY Fonts

TROY E-13B Screen Font:	
TROY CMC-7 Screen Font:	
TROY LCF Screen Font:	
TROY SCF Screen Font:	
TROY ECF Screen Font:	
TROY Security Screen Font:	
TROY Messaging Screen Font:	<i>A Message For You</i>
TROY AutoProtect Screen Font:	VOID VOID VOID
TROY OCR-A Screen Font:	ABCDEFGHIJKLMNOPQRSTUVWXYZ
TROY OCR-B Screen Font:	ABCDEFGHIJKLMNOPQRSTUVWXYZ
TROY Reverse Helvetica Screen Font:	
TROY Microprint Screen Font:	-----
TROY Code 128 Screen Font:	
TROY Code 2 of 5 Screen Font:	
TROY Code 3 of 9 Screen Font:	
TROY EAN-8 Screen Font:	
TROY EAN-13 Screen Font:	
TROY POSTNET Screen Font:	
TROY Reverse POSTNET Screen Font:	
TROY UPC-A Screen Font:	
TROY UPC-E Screen Font:	

MICR Font Guidelines

The TROY E-13B and CMC-7 MICR fonts were developed using strict specifications designed specifically for high-speed magnetic-read processing. To maintain these strict specifications, the TROY MICR fonts were designed as non-scalable fonts (fixed fonts) that are fixed in pitch (spacing) and point size (height). Because Windows TrueType™ technology allows fonts to be scalable by changing the point size, it is imperative to maintain the 12-point size of the MICR fonts installed in Windows. Selecting a point size other than 12-point for the MICR font in Windows will not visibly enlarge or reduce the size of the characters; however, the horizontal spacing will be affected. Any alteration to the spacing of the characters will result in incorrect placement of the MICR characters in the MICR line at the bottom of your checks, causing your financial documents to be rejected by the bank.

The Convenience Amount fonts were also designed as non-scalable fonts, but can be changed (increased or decreased) from the default point size to meet your check printing requirements. Changing the point size of a fixed font in Windows will only affect the horizontal spacing of the characters and not affect the vertical size of the characters. The TROY Enhanced Convenience Amount font and TROY Security font were designed as scalable fonts that can be changed (increased or decreased) from the default point size to meet your check printing requirements.

NOTE: It is highly recommended that you verify the MICR line at the bottom of your printed checks using the TROY MICR Document Template (p/n 54-17373-001) to verify the positioning of each character. Refer to the TROY MICR Basics Handbook for details (provided in PDF format on the TROY Font Card Kit CD).

Font Character Mapping

Each character or symbol in a font set corresponds to a specific ASCII (American Standard Code for Information Interchange) number (e.g., the capital letter “A” = ASCII number 65). Pressing a key on your computer keyboard automatically generates the ASCII number (32 through 127) associated with the character or symbol displayed on the key. Likewise, any character or symbol not represented on your computer keyboard (ASCII numbers above 127) can be accessed by manually entering the associated ASCII number using the numeric keypad.

The fonts provided on the *TROY Font Card Kit* CD have each of the characters and symbols in each font set (shown on the following pages) “mapped” (associated) to standard computer keyboard characters using the corresponding ASCII number for each character and symbol on the keyboard.

For example, the transit symbol (one of the industry-standard symbols used in a MICR line at the bottom of a check) contained in the TROY E-13B MICR character table (shown on page 3-8) does not exist on a standard computer keyboard but has been “mapped” to the standard ASCII keyboard capital letter “A”, designated as ASCII number 65.

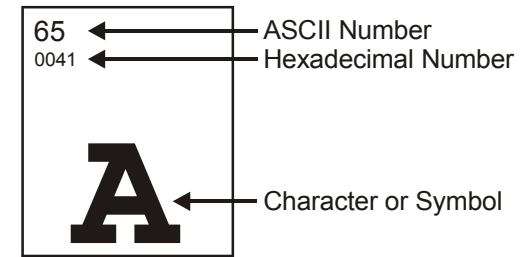
Therefore, after loading and then selecting the TROY E-13B MICR Font, typing the capital letter “A” on your computer keyboard will produce the MICR transit symbol instead of the capital letter “A”. The TROY E-13B MICR character table (shown on page 3-8) associates the transit symbol with ASCII number 65 (the same ASCII number used for the capital letter “A” if you had selected a standard ASCII font set instead of the TROY E-13B MICR font set).

Determining a Character Mapping

Accessing Unmapped Characters

To determine which key on your computer keyboard that a TROY character or symbol is “mapped” to, simply compare the ASCII number of the selected TROY character or symbol to the same ASCII number listed in the *Standard ASCII Character Map* (shown on the next page) to determine which keyboard key can be used to access the selected TROY character or symbol.

Some of the font sets provided on the *TROY Font Card Kit* CD contain more characters or symbols than can be “mapped” to the available keys on a standard computer keyboard. In this case, these characters can be accessed by manually entering the ASCII number (see example at right) designated for each character (refer to the character tables on the following pages). The hexadecimal number shown below the ASCII number is used for programming mainframe computers.



To access a character or symbol that is not “mapped” to one of the keys on your Windows computer keyboard, you can manually enter the ASCII number by holding down the **ALT** key on your keyboard, entering the associated ASCII number for the character you wish to access, and then releasing the **ALT** key.

NOTE: You must use the numerical keypad on your keyboard to enter the ASCII number. The number keys along the top of the keyboard will not work for this application.

Section 3

Using TROY Fonts

Standard ASCII
Character Set
(reference only)

24	25	26	27	28	29	30	31	32 0020	33 0021	34 0022	35 0023
									!	"	#
36 0024	37 0025	38 0026	39 0027	40 0028	41 0029	42 002A	43 002B	44 002C	45 002D	46 002E	47 002F
\$	%	&	'	()	*	+	,	-	.	/
48 0030	49 0031	50 0032	51 0033	52 0034	53 0035	54 0036	55 0037	56 0038	57 0039	58 003A	59 003B
0	1	2	3	4	5	6	7	8	9	:	;
60 003C	61 003D	62 003E	63 003F	64 0040	65 0041	66 0042	67 0043	68 0044	69 0045	70 0046	71 0047
<	=	>	?	@	A	B	C	D	E	F	G
72 0048	73 0049	74 004A	75 004B	76 004C	77 004D	78 004E	79 004F	80 0050	81 0051	82 0052	83 0053
H	I	J	K	L	M	N	O	P	Q	R	S
84 0054	85 0055	86 0056	87 0057	88 0058	89 0059	90 005A	91 005B	92 005C	93 005D	94 005E	95 005F
T	U	V	W	X	Y	Z	[\]	^	_
96 0060	97 0061	98 0062	99 0063	100 0064	101 0065	102 0066	103 0067	104 0068	105 0069	106 006A	107 006B
`	a	b	c	d	e	f	g	h	i	j	k
108 006C	109 006D	110 006E	111 006F	112 0070	113 0071	114 0072	115 0073	116 0074	117 0075	118 0076	119 0077
l	m	n	o	p	q	r	s	t	u	v	w
120 0078	121 0079	122 007A	123 007B	124 007C	125 007D	126 007E	127	128	129	130	131
x	y	z	{		}	~					



Section 3

Using TROY Fonts

TROY MICR E-13B 12-Point Font (Troy E-13B)

<Esc> (ØQ<Esc> (s1p12vøsoøbøT

24	25	26	27	28	29	30	31	32 F020	33	34	35
36 F024	37	38 F026	39	40	41	42	43	44	45 F02D	46	47 F02F
48 F030	49 F031	50 F032	51 F033	52 F034	53 F035	54 F036	55 F037	56 F038	57 F039	58 F03A	59 F03B
60	61 F03D	62	63	64	65 F041	66 F042	67 F043	68 F044	69	70	71
72	73	74	75	76	77	78	79 F04F	80	81	82	83
84 F054	85	86	87	88	89	90	91	92	93	94	95
96	97	98	99	100	101	102	103	104	105	106	107
108	109	110	111 F06F	112	113	114	115	116 F074	117	118	119

Section 3

Using TROY Fonts

**TROY MICR
CMC-7 12-Point
Font
(Troy CMC7)**

<Esc> (ØQ<Esc> (s1p12vØsØb1T

24	25	26	27	28	29	30	31	32 F020	33	34	35
36	37	38	39	40	41	42	43	44	45	46	47
48 F030	49 F031	50 F032	51 F033	52 F034	53 F035	54 F036	55 F037	56 F038	57 F039	58	59
60	61	62	63	64	65 F041	66 F042	67 F043	68 F044	69 F045	70	71

**TROY Enhanced
Convenience
Amount Font
(Troy ECF)**

<Esc> (3Q<Esc> (s1p□vØsØb1ØT □ = desired point size

24	25	26	27	28	29	30	31	32 F020	33	34	35
36 F024	37	38	39	40	41	42 F02A	43	44 F02C	45	46 F02E	47
\$						*		!		!	
48 F030	49 F031	50 F032	51 F033	52 F034	53 F035	54 F036	55 F037	56 F038	57 F039	58	59
0 ZERO	1 ONE	2 TWO	3 THREE	4 FOUR	5 FIVE	6 SIX	7 SEVEN	8 EIGHT	9 NINE		
60	61	62	63	64	65 F041	66 F042	67 F043	68 F044	69 F045	70 F046	71 F047
					0 CTS	1 CTS	2 CTS	3 CTS	4 CTS	5 CTS	6 CTS
72 F048	73 F049	74 F04A	75	76	77	78	79	80	81	82	83
7 CTS	8 CTS	9 CTS									



Section 3

Using TROY Fonts

NOTE: The TROY Enhanced Convenience Amount font can be used in place of the TROY Convenience Amount font in the legal amount field of the check. To write the cents amount on the check, type the capital letter that corresponds to the smaller cent characters shown in the example above (i.e., A=0, B=1, C=2).

TROY Large Convenience Amount 18-Point Font (Troy LCF)

<Esc> (1Q<Esc> (s0p5.0h16.0v0s0b0T

Key	Char	Key	Char	Key	Char	Key	Char
0	0 ZERO	5	5 FIVE	\$	\$ DOLLAR	%	€ EURO
1	1 ONE	6	6 SIX	*	* ASK	&	€
2	2 TWO	7	7 SEVEN	,	, COM	C	¢ CENT
3	3 THREE	8	8 EIGHT	.	. PER		
4	4 FOUR	9	9 NINE				

TROY Small Convenience Amount 24-Point Font (Troy SCF)

<Esc> (2Q<Esc> (s0p6.00h22.0v0s0b0T

Key	Char	Key	Char	Key	Char	Key	Char
0	0 ZERO	5	5 FIVE	\$	\$ DOLLAR	%	€ EURO
1	1 ONE	6	6 SIX	*	* ASK	&	€
2	2 TWO	7	7 SEVEN	,	, COM		
3	3 THREE	8	8 EIGHT	.	. PER		
4	4 FOUR	9	9 NINE				



Section 3

Using TROY Fonts

TROY Security Font (Troy Security)

<Esc> (4Q<Esc> (s1p□v0s0b0T □ = desired point size

24	25	26	27	28	29	30	31	32 F020	33	34	35 F023
36 F024	37 F025	38 F026	39	40	41	42 F02A	43	44 F02C	45	46 F02E	47 F02F
DOLLAR	EURO	AMP				AST		COM		PER	BLANK
48 F030	49 F031	50 F032	51 F033	52 F034	53 F035	54 F036	55 F037	56 F038	57 F039	58	59
ZERO	ONE	TWO	THREE	FOUR	FIVE	SIX	SEVEN	EIGHT	NINE		

TROY Security Font (Spanish) (Troy Security Spanish)

<Esc> (4Q<Esc> (s1p□v0s0b4T □ = desired point size

24	25	26	27	28	29	30	31	32 F020	33	34	35 F023
								:			
36 F024	37 F025	38 F026	39	40	41	42 F02A	43	44 F02C	45	46 F02E	47 F02F
DOLLAR	EURO	AMP				AST		COMA		PUNTO	LIBRE
48 F030	49 F031	50 F032	51 F033	52 F034	53 F035	54 F036	55 F037	56 F038	57 F039	58	59
CERO	UNO	DOS	TRES	CUATRO	CINCO	SEIS	SEITE	OCHO	NUEVE		

NOTE: The TROY Security Spanish Font is included in the International Font Collection provided on the *TROY Font Card Kit CD*.

Section 3

Using TROY Fonts

TROY Reverse Helvetica Font (Troy Helvetica (Rev))

32	20	33	21	34	22	35	23	36	24	37	25	38	26	39	27	40	28	41	29
		ı	„	#	ƒ	‰	Œ	,	()									
42	2A	43	2B	44	2C	45	2D	46	2E	47	2F	48	30	49	31	50	32	51	33
*	+	`	-	·		0	↓	∫	3										
52	34	53	35	54	36	55	37	56	38	57	39	58	3A	59	3B	60	3C	61	3D
†	ƒ	€	∟	8	ə	:	!	<	=										
62	3E	63	3F	64	40	65	41	66	42	67	43	68	44	69	45	70	46	71	47
>	ı	©	∇	B	C	D	E	F	G										
72	48	73	49	74	4A	75	4B	76	4C	77	4D	78	4E	79	4F	80	50	81	51
H	I	∩	K	Г	W	И	O	Ь	О										
82	52	83	53	84	54	85	55	86	56	87	57	88	58	89	59	90	5A	91	5B
B	2	⊥	∩	∧	M	X	∧	Σ	Γ										
92	5C	93	5D	94	5E	95	5F	96	60	97	61	98	62	99	63	100	64	101	65
/]	√	-	,	g	p	c	q	e										
102	66	103	67	104	68	105	69	106	6A	107	6B	108	6C	109	6D	110	6E	111	6F
†	ɑ	μ	!	!	κ	∩	ω	υ	ο										
112	70	113	71	114	72	115	73	116	74	117	75	118	76	119	77	120	78	121	79
b	d	ι	2	ƒ	π	∧	M	x	λ										
122	7A	123	7B	124	7C	125	7D	126	7E	127	7F	128	80	129	81	130	82	131	83
Σ	{		}	~	□	□	□	□	□										

Section 3

Using TROY Fonts

TROY OCR-A
(Troy OCR-A)

<Esc> (Ø0<Esc> (s1p□vøšøb1ø4T □ = desired point size

24	25	26	27	28	29	30	31	32 0020	33 0021	34 0022	35 0023
									!	▯	#
36 0024	37 0025	38 0026	39 0027	40 0028	41 0029	42 002A	43 002B	44 002C	45 002D	46 002E	47 002F
₣	%	&	'	()	*	+	¬	-	.	/
48 0030	49 0031	50 0032	51 0033	52 0034	53 0035	54 0036	55 0037	56 0038	57 0039	58 003A	59 003B
0	1	2	3	4	5	6	7	8	9	:	;
60 003C	61 003D	62 003E	63 003F	64 0040	65 0041	66 0042	67 0043	68 0044	69 0045	70 0046	71 0047
<	=	>	?	@	A	B	C	D	E	F	G
72 0048	73 0049	74 004A	75 004B	76 004C	77 004D	78 004E	79 004F	80 0050	81 0051	82 0052	83 0053
H	I	J	K	L	M	N	O	P	Q	R	S
84 0054	85 0055	86 0056	87 0057	88 0058	89 0059	90 005A	91 005B	92 005C	93 005D	94 005E	95 005F
T	U	V	W	X	Y	Z	[\]	^	¥
96 0060	97 0061	98 0062	99 0063	100 0064	101 0065	102 0066	103 0067	104 0068	105 0069	106 006A	107 006B
h	a	b	c	d	e	f	g	h	i	j	k
108 006C	109 006D	110 006E	111 006F	112 0070	113 0071	114 0072	115 0073	116 0074	117 0075	118 0076	119 0077
l	m	n	o	p	q	r	s	t	u	v	w
120 0078	121 0079	122 007A	123 007B	124 007C	125 007D	126 007E	127 007F	128 20AC	129	130	131
x	y	z	{		}	⌋	■	□			
132	133	134	135	136	137	138	139 2039	140	141	142	143
							<				
144	145 2018	146 2019	147 201C	148 201D	149	150 2013	151 2014	152	153	154	155 203A
	v	v	▯	▯		-	—				>



Section 3

Using TROY Fonts

TROY OCR-A (continued)

156	157	158	159	160 00A0	161	162 00A2	163 00A3	164 :	165 00A5	166	167
						€	£		¥		
168	169	170	171	172	173	174	175	176	177	178	179
180	181	182	183 00B7	184 00B8	185	186	187	188	189	190	191 00BF
			▪	◻							?
192	193	194	195	196 00C4	197 00C5	198 00C6	199	200	201	202	203
				À	Á	Â					
204	205	206	207	208	209 00D1	210	211	212	213	214 00D6	215
					Ñ					Ö	
216 00D8	217	218	219	220 00DC	221	222	223	224	225	226	227
Ø				Ü							

NOTE: This OCR font must be used at the designated point size to ensure optical readability.

- Size I – must use 12-point size (upper and lower case characters can be used)
- Size III – must use 16-point size (only upper case characters can be used)
- Size IV – must use 20-point size (only upper case characters can be used)

Section 3

Using TROY Fonts

TROY OCR-B (Troy OCR-B)

<Esc> (10<Esc> (s1p□vøšøb11ØT □ = desired point size

24	25	26	27	28	29	30	31	32 0020	33 0021	34 0022	35 0023
									!	"	#
36 0024	37 0025	38 0026	39 0027	40 0028	41 0029	42 002A	43 002B	44 002C	45 002D	46 002E	47 002F
\$	%	&	'	()	*	+	/	-	.	/
48 0030	49 0031	50 0032	51 0033	52 0034	53 0035	54 0036	55 0037	56 0038	57 0039	58 003A	59 003B
0	1	2	3	4	5	6	7	8	9	:	;
60 003C	61 003D	62 003E	63 003F	64 0040	65 0041	66 0042	67 0043	68 0044	69 0045	70 0046	71 0047
<	=	>	?	@	A	B	C	D	E	F	G
72 0048	73 0049	74 004A	75 004B	76 004C	77 004D	78 004E	79 004F	80 0050	81 0051	82 0052	83 0053
H	I	J	K	L	M	N	O	P	Q	R	S
84 0054	85 0055	86 0056	87 0057	88 0058	89 0059	90 005A	91 005B	92 005C	93 005D	94 005E	95 005F
T	U	V	W	X	Y	Z	[\]	^	
96 0060	97 0061	98 0062	99 0063	100 0064	101 0065	102 0066	103 0067	104 0068	105 0069	106 006A	107 006B
`	a	b	c	d	e	f	g	h	i	j	k
108 006C	109 006D	110 006E	111 006F	112 0070	113 0071	114 0072	115 0073	116 0074	117 0075	118 0076	119 0077
l	m	n	o	p	q	r	s	t	u	v	w
120 0078	121 0079	122 007A	123 007B	124 007C	125 007D	126 007E	127 007F	128	129	130 201A	131
x	y	z	{		}	~	■			/	
132 201E	133 2026	134 2020	135 2021	136 02C6	137 2030	138 0160	139 2039	140 0152	141	142 017D	143
//	...	†	‡	^	%	š	<	€		ž	
144	145 2018	146 2019	147 201C	148 201D	149 2022	150 2013	151 2014	152 02DC	153 2122	154 0161	155 203A
	/	/	//	//	.	-	-	~	m	š	>

Section 3

Using TROY Fonts

TROY OCR-B (continued)

156 0153	157	158 017E	159 0178	160 00A0	161 00A1	162 00A2	163 00A3	164 00A4	165 00A5	166 00A6	167 00A7
æ		ž	ÿ		ı	ç	£	œ	¥	ı	§
168 00A8	169	170 00AA	171 00AB	172 00AC	173 00AD	174	175 00AF	176 00B0	177 00B1	178	179
“		à	«	—	—		—	ıı	±		
180 00B4	181 00B5	182	183 00B7	184 00B8	185	186 00BA	187 00BB	188	189	190	191 00BF
’	ı		•	,		ıı	»				¿
192 00C0	193 00C1	194 00C2	195 00C3	196 00C4	197 00C5	198 00C6	199 00C7	200 00C8	201 00C9	202 00CA	203 00CB
À	Á	Â	Ã	Ä	Å	Æ	Ç	È	É	Ê	Ë
204 00CC	205 00CD	206 00CE	207 00CF	208 00D0	209 00D1	210 00D2	211 00D3	212 00D4	213 00D5	214 00D6	215 00D7
Ì	Í	Î	Ï	Ð	Ñ	Ò	Ó	Ô	Õ	Ö	×
216 00D8	217 00D9	218 00DA	219 00DB	220 00DC	221 00DD	222 00DE	223 00DF	224 00E0	225 00E1	226 00E2	227 00E3
Ø	Ù	Ú	Û	Ü	Ý	Þ	ß	à	á	â	ã
228 00E4	229 00E5	230 00E6	231 00E7	232 00E8	233 00E9	234 00EA	235 00EB	236 00EC	237 00ED	238 00EE	239 00EF
ä	å	æ	ç	è	é	ê	ë	ì	í	î	ï
240 00F0	241 00F1	242 00F2	243 00F3	244 00F4	245 00F5	246 00F6	247 00F7	248 00F8	249 00F9	250 00FA	251 00FB
ð	ñ	ò	ó	ô	õ	ö	÷	ø	ù	ú	û
252 00FC	253 00FD	254 00FE	255 00FF	256 E000	257 E001	258 E002					
ü	ý	þ	ÿ								

NOTE: This OCR font must be used at the designated point size to ensure optical readability.

- Size I – must use 10-point size (upper and lower case characters can be used)
- Size III – (not supported)
- Size IV – must use 16-point size (upper and lower case characters can be used)

Section 3

Using TROY Fonts

TROY UPC-A Barcode

<Esc> (8Y<Esc> (s1p□v0s0b24600T □ = desired height

32	20	33	21	34	22	35	23	36	24	37	25	38	26	39	27	40	28	41	29
42	2A	43	2B	44	2C	45	2D	46	2E	47	2F	48	30	49	31	50	32	51	33
												0	1	2	3				
52	34	53	35	54	36	55	37	56	38	57	39	58	3A	59	3B	60	3C	61	3D
	4		5		6		7		8		9								
62	3E	63	3F	64	40	65	41	66	42	67	43	68	44	69	45	70	46	71	47
						0	1	2	3	4	5	6							
72	48	73	49	74	4A	75	4B	76	4C	77	4D	78	4E	79	4F	80	50	81	51
	7		8		9														
82	52	83	53	84	54	85	55	86	56	87	57	88	58	89	59	90	5A	91	5B
92	5C	93	5D	94	5E	95	5F	96	60	97	61	98	62	99	63	100	64	101	65
										0	1	2	3	4					
102	66	103	67	104	68	105	69	106	6A	107	6B	108	6C	109	6D	110	6E	111	6F
	5		6		7		8		9						0		1		
112	70	113	71	114	72	115	73	116	74	117	75	118	76	119	77	120	78	121	79
	2		3		4		5		6		7		8		9				
122	7A	123	7B	124	7C	125	7D	126	7E	127	7F	128	80	129	81	130	82	131	83
132	84	133	85	134	86	135	87	136	88	137	89	138	8A	139	8B	140	8C	141	8D
142	8E	143	8F	144	90	145	91	146	92	147	93	148	94	149	95	150	96	151	97
152	98	153	99	154	9A	155	9B	156	9C	157	9D	158	9E	159	9F	160	A0	161	A1
162	A2	163	A3	164	A4	165	A5	166	A6	167	A7	168	A8	169	A9	170	AA	171	AB
172	AC	173	AD	174	AE	175	AF	176	B0	177	B1	178	B2	179	B3	180	B4	181	B5
182	B6	183	B7	184	B8	185	B9	186	BA	187	BB	188	BC	189	BD	190	BE	191	BF

Section 3

Using TROY Fonts

TROY UPC-E Barcode

<Esc> (8Y<Esc> (s1p□vøsoøb2461øT □ = desired height

32	20	33	21	34	22	35	23	36	24	37	25	38	26	39	27	40	28	41	29
42	2A	43	2B	44	2C	45	2D	46	2E	47	2F	48	30	49	31	50	32	51	33
52	34	53	35	54	36	55	37	56	38	57	39	58	3A	59	3B	60	3C	61	3D
62	3E	63	3F	64	40	65	41	66	42	67	43	68	44	69	45	70	46	71	47
72	48	73	49	74	4A	75	4B	76	4C	77	4D	78	4E	79	4F	80	50	81	51
82	52	83	53	84	54	85	55	86	56	87	57	88	58	89	59	90	5A	91	5B
92	5C	93	5D	94	5E	95	5F	96	60	97	61	98	62	99	63	100	64	101	65
102	66	103	67	104	68	105	69	106	6A	107	6B	108	6C	109	6D	110	6E	111	6F
112	70	113	71	114	72	115	73	116	74	117	75	118	76	119	77	120	78	121	79
122	7A	123	7B	124	7C	125	7D	126	7E	127	7F	128	80	129	81	130	82	131	83
132	84	133	85	134	86	135	87	136	88	137	89	138	8A	139	8B	140	8C	141	8D
142	8E	143	8F	144	90	145	91	146	92	147	93	148	94	149	95	150	96	151	97
152	98	153	99	154	9A	155	9B	156	9C	157	9D	158	9E	159	9F	160	A0	161	A1
162	A2	163	A3	164	A4	165	A5	166	A6	167	A7	168	A8	169	A9	170	AA	171	AB
172	AC	173	AD	174	AE	175	AF	176	B0	177	B1	178	B2	179	B3	180	B4	181	B5
182	B6	183	B7	184	B8	185	B9	186	BA	187	BB	188	BC	189	BD	190	BE	191	BF

Section 3

Using TROY Fonts

TROY EAN-8 Barcode

<Esc> (8Y<Esc> (s1p□v0s0b24620T □ = desired height

32	20	33	21	34	22	35	23	36	24	37	25	38	26	39	27	40	28	41	29
42	2A	43	2B	44	2C	45	2D	46	2E	47	2F	48	30	49	31	50	32	51	33
												 0		 1		 2		 3	
52	34	53	35	54	36	55	37	56	38	57	39	58	3A	59	3B	60	3C	61	3D
 4		 5		 6		 7		 8		 9									
62	3E	63	3F	64	40	65	41	66	42	67	43	68	44	69	45	70	46	71	47
						 0		 1		 2		 3		 4		 5		 6	
72	48	73	49	74	4A	75	4B	76	4C	77	4D	78	4E	79	4F	80	50	81	51
 7		 8		 9															
82	52	83	53	84	54	85	55	86	56	87	57	88	58	89	59	90	5A	91	5B
92	5C	93	5D	94	5E	95	5F	96	60	97	61	98	62	99	63	100	64	101	65
102	66	103	67	104	68	105	69	106	6A	107	6B	108	6C	109	6D	110	6E	111	6F
112	70	113	71	114	72	115	73	116	74	117	75	118	76	119	77	120	78	121	79
122	7A	123	7B	124	7C	125	7D	126	7E	127	7F	128	80	129	81	130	82	131	83
132	84	133	85	134	86	135	87	136	88	137	89	138	8A	139	8B	140	8C	141	8D
142	8E	143	8F	144	90	145	91	146	92	147	93	148	94	149	95	150	96	151	97
152	98	153	99	154	9A	155	9B	156	9C	157	9D	158	9E	159	9F	160	A0	161	A1
162	A2	163	A3	164	A4	165	A5	166	A6	167	A7	168	A8	169	A9	170	AA	171	AB
172	AC	173	AD	174	AE	175	AF	176	B0	177	B1	178	B2	179	B3	180	B4	181	B5
182	B6	183	B7	184	B8	185	B9	186	BA	187	BB	188	BC	189	BD	190	BE	191	BF

Section 3

Using TROY Fonts

TROY EAN-13 Barcode

<Esc> (8Y<Esc> (s1p□v0s0b24630T □ = desired height

32	20	33	21	34	22	35	23	36	24	37	25	38	26	39	27	40	28	41	29
42	2A	43	2B	44	2C	45	2D	46	2E	47	2F	48	30	49	31	50	32	51	33
52	34	53	35	54	36	55	37	56	38	57	39	58	3A	59	3B	60	3C	61	3D
62	3E	63	3F	64	40	65	41	66	42	67	43	68	44	69	45	70	46	71	47
72	48	73	49	74	4A	75	4B	76	4C	77	4D	78	4E	79	4F	80	50	81	51
82	52	83	53	84	54	85	55	86	56	87	57	88	58	89	59	90	5A	91	5B
92	5C	93	5D	94	5E	95	5F	96	60	97	61	98	62	99	63	100	64	101	65
102	66	103	67	104	68	105	69	106	6A	107	6B	108	6C	109	6D	110	6E	111	6F
112	70	113	71	114	72	115	73	116	74	117	75	118	76	119	77	120	78	121	79
122	7A	123	7B	124	7C	125	7D	126	7E	127	7F	128	80	129	81	130	82	131	83
132	84	133	85	134	86	135	87	136	88	137	89	138	8A	139	8B	140	8C	141	8D
142	8E	143	8F	144	90	145	91	146	92	147	93	148	94	149	95	150	96	151	97
152	98	153	99	154	9A	155	9B	156	9C	157	9D	158	9E	159	9F	160	A0	161	A1
162	A2	163	A3	164	A4	165	A5	166	A6	167	A7	168	A8	169	A9	170	AA	171	AB
172	AC	173	AD	174	AE	175	AF	176	B0	177	B1	178	B2	179	B3	180	B4	181	B5
182	B6	183	B7	184	B8	185	B9	186	BA	187	BB	188	BC	189	BD	190	BE	191	BF

Section 3

Using TROY Fonts

TROY BC25 Barcode

<Esc> (4Y<Esc> (s1p□v0s0b24640T □ = desired height

32 20	33 21	34 22	35 23	36 24	37 25	38 26	39 27	40 28	41 29
42 2A	43 2B	44 2C	45 2D	46 2E	47 2F	48 30	49 31	50 32	51 33
52 34	53 35	54 36	55 37	56 38	57 39	58 3A	59 3B	60 3C	61 3D
62 3E	63 3F	64 40	65 41	66 42	67 43	68 44	69 45	70 46	71 47
72 48	73 49	74 4A	75 4B	76 4C	77 4D	78 4E	79 4F	80 50	81 51
82 52	83 53	84 54	85 55	86 56	87 57	88 58	89 59	90 5A	91 5B
92 5C	93 5D	94 5E	95 5F	96 60	97 61	98 62	99 63	100 64	101 65
102 66	103 67	104 68	105 69	106 6A	107 6B	108 6C	109 6D	110 6E	111 6F
112 70	113 71	114 72	115 73	116 74	117 75	118 76	119 77	120 78	121 79
122 7A	123 7B	124 7C	125 7D	126 7E	127 7F	128 80	129 81	130 82	131 83
132 84	133 85	134 86	135 87	136 88	137 89	138 8A	139 8B	140 8C	141 8D
142 8E	143 8F	144 90	145 91	146 92	147 93	148 94	149 95	150 96	151 97
152 98	153 99	154 9A	155 9B	156 9C	157 9D	158 9E	159 9F	160 A0	161 A1
162 A2	163 A3	164 A4	165 A5	166 A6	167 A7	168 A8	169 A9	170 AA	171 AB
172 AC	173 AD	174 AE	175 AF	176 B0	177 B1	178 B2	179 B3	180 B4	181 B5
182 B6	183 B7	184 B8	185 B9	186 BA	187 BB	188 BC	189 BD	190 BE	191 BF

Section 3

Using TROY Fonts

TROY BC39 Barcode

<Esc> (ØY<Esc> (s1p□vøšøb2467ØT □ = desired height

32 20	33 21	34 22	35 23	36 24	37 25	38 26	39 27	40 28	41 29
42 2A	43 2B	44 2C	45 2D	46 2E	47 2F	48 30	49 31	50 32	51 33
52 34	53 35	54 36	55 37	56 38	57 39	58 3A	59 3B	60 3C	61 3D
62 3E	63 3F	64 40	65 41	66 42	67 43	68 44	69 45	70 46	71 47
72 48	73 49	74 4A	75 4B	76 4C	77 4D	78 4E	79 4F	80 50	81 51
82 52	83 53	84 54	85 55	86 56	87 57	88 58	89 59	90 5A	91 5B
92 5C	93 5D	94 5E	95 5F	96 60	97 61	98 62	99 63	100 64	101 65
102 66	103 67	104 68	105 69	106 6A	107 6B	108 6C	109 6D	110 6E	111 6F
112 70	113 71	114 72	115 73	116 74	117 75	118 76	119 77	120 78	121 79
122 7A	123 7B	124 7C	125 7D	126 7E	127 7F	128 80	129 81	130 82	131 83
132 84	133 85	134 86	135 87	136 88	137 89	138 8A	139 8B	140 8C	141 8D
142 8E	143 8F	144 90	145 91	146 92	147 93	148 94	149 95	150 96	151 97
152 98	153 99	154 9A	155 9B	156 9C	157 9D	158 9E	159 9F	160 A0	161 A1
162 A2	163 A3	164 A4	165 A5	166 A6	167 A7	168 A8	169 A9	170 AA	171 AB
172 AC	173 AD	174 AE	175 AF	176 B0	177 B1	178 B2	179 B3	180 B4	181 B5
182 B6	183 B7	184 B8	185 B9	186 BA	187 BB	188 BC	189 BD	190 BE	191 BF

Section 3

Using TROY Fonts

TROY BC128 Barcode

<Esc> (ØY<Esc> (s1p□vØsØb247ØØT □ = desired height

0 00	1 01	2 02	3 03	4 04	5 05	6 06	7 07	8 08	9 09
10 0A	11 0B	12 0C	13 0D	14 0E	15 0F	16 10	17 11	18 12	19 13
20 14	21 15	22 16	23 17	24 18	25 19	26 1A	27 1B	28 1C	29 1D
30 1E	31 1F	32 20	33 21	34 22	35 23	36 24	37 25	38 26	39 27
40 28	41 29	42 2A	43 2B	44 2C	45 2D	46 2E	47 2F	48 30	49 31
50 32	51 33	52 34	53 35	54 36	55 37	56 38	57 39	58 3A	59 3B
60 3C	61 3D	62 3E	63 3F	64 40	65 41	66 42	67 43	68 44	69 45
70 46	71 47	72 48	73 49	74 4A	75 4B	76 4C	77 4D	78 4E	79 4F
80 50	81 51	82 52	83 53	84 54	85 55	86 56	87 57	88 58	89 59
90 5A	91 5B	92 5C	93 5D	94 5E	95 5F	96 60	97 61	98 62	99 63
100 64	101 65	102 66	103 67	104 68	105 69	106 6A	107 6B	108 6C	109 6D
110 6E	111 6F	112 70	113 71	114 72	115 73	116 74	117 75	118 76	119 77
120 78	121 79	122 7A	123 7B	124 7C	125 7D	126 7E	127 7F	128 80	129 81
130 82	131 83	132 84	133 85	134 86	135 87	136 88	137 89	138 8A	139 8B
140 8C	141 8D	142 8E	143 8F	144 90	145 91	146 92	147 93	148 94	149 95
150 96	151 97	152 98	153 99	154 9A	155 9B	156 9C	157 9D	158 9E	159 9F

Section 3

Using TROY Fonts

TROY
POSTNET

<Esc>(15Y<Esc>(s1p□v0s0b24770T □ = desired height

32	20	33	21	34	22	35	23	36	24	37	25	38	26	39	27	40	28	41	29
42	2A	43	2B	44	2C	45	2D	46	2E	47	2F	48	30	49	31	50	32	51	33
52	34	53	35	54	36	55	37	56	38	57	39	58	3A	59	3B	60	3C	61	3D
62	3E	63	3F	64	40	65	41	66	42	67	43	68	44	69	45	70	46	71	47
72	48	73	49	74	4A	75	4B	76	4C	77	4D	78	4E	79	4F	80	50	81	51
82	52	83	53	84	54	85	55	86	56	87	57	88	58	89	59	90	5A	91	5B
92	5C	93	5D	94	5E	95	5F	96	60	97	61	98	62	99	63	100	64	101	65
102	66	103	67	104	68	105	69	106	6A	107	6B	108	6C	109	6D	110	6E	111	6F
112	70	113	71	114	72	115	73	116	74	117	75	118	76	119	77	120	78	121	79
122	7A	123	7B	124	7C	125	7D	126	7E	127	7F	128	80	129	81	130	82	131	83
132	84	133	85	134	86	135	87	136	88	137	89	138	8A	139	8B	140	8C	141	8D
142	8E	143	8F	144	90	145	91	146	92	147	93	148	94	149	95	150	96	151	97
152	98	153	99	154	9A	155	9B	156	9C	157	9D	158	9E	159	9F	160	A0	161	A1
162	A2	163	A3	164	A4	165	A5	166	A6	167	A7	168	A8	169	A9	170	AA	171	AB
172	AC	173	AD	174	AE	175	AF	176	B0	177	B1	178	B2	179	B3	180	B4	181	B5
182	B6	183	B7	184	B8	185	B9	186	BA	187	BB	188	BC	189	BD	190	BE	191	BF

Section 3

Using TROY Fonts

**TROY
POSTNET
Reverse
(optional)**

<Esc> (15Y<Esc> (s1p□v0s33b24770T □ = desired height

32	20	33	21	34	22	35	23	36	24	37	25	38	26	39	27	40	28	41	29
42	2A	43	2B	44	2C	45	2D	46	2E	47	2F	48	30	49	31	50	32	51	33
52	34	53	35	54	36	55	37	56	38	57	39	58	3A	59	3B	60	3C	61	3D
62	3E	63	3F	64	40	65	41	66	42	67	43	68	44	69	45	70	46	71	47
72	48	73	49	74	4A	75	4B	76	4C	77	4D	78	4E	79	4F	80	50	81	51
82	52	83	53	84	54	85	55	86	56	87	57	88	58	89	59	90	5A	91	5B
92	5C	93	5D	94	5E	95	5F	96	60	97	61	98	62	99	63	100	64	101	65
102	66	103	67	104	68	105	69	106	6A	107	6B	108	6C	109	6D	110	6E	111	6F
112	70	113	71	114	72	115	73	116	74	117	75	118	76	119	77	120	78	121	79
122	7A	123	7B	124	7C	125	7D	126	7E	127	7F	128	80	129	81	130	82	131	83
132	84	133	85	134	86	135	87	136	88	137	89	138	8A	139	8B	140	8C	141	8D
142	8E	143	8F	144	90	145	91	146	92	147	93	148	94	149	95	150	96	151	97
152	98	153	99	154	9A	155	9B	156	9C	157	9D	158	9E	159	9F	160	A0	161	A1
162	A2	163	A3	164	A4	165	A5	166	A6	167	A7	168	A8	169	A9	170	AA	171	AB
172	AC	173	AD	174	AE	175	AF	176	B0	177	B1	178	B2	179	B3	180	B4	181	B5
182	B6	183	B7	184	B8	185	B9	186	BA	187	BB	188	BC	189	BD	190	BE	191	BF

International Convenience Amount Fonts

In addition to the CMC-7 font used for International MICR applications, TROY provides the following Convenience Amount font sets in a variety of languages (see examples below). These fonts are provided only on the *TROY Font Card Kit* CD. These fonts can be easily downloaded into the printer's memory using the TROY Printer Utility.

The following TROY International fonts are non-scalable (fixed in size) and can be used in the *convenience amount* field of the check. The escape sequence used to call each font set in a non-Windows environment is provided directly above each example. The examples below may not be to scale.

British Large Convenience Amount Font (Troy LCF British)

<Esc> (1Q<Esc> (sØp5.14h16.Ø9vØsØb1T

1 2 3 4 5 6 7 8 9 0 £ € € * , .
ONE TWO THREE FOUR FIVE SIX SEVEN EIGHT NINE ZERO G.B.P. EURO AST COM PER

French Large Convenience Amount Font (Troy LCF French)

<Esc> (1Q<Esc> (sØp5.14h16.Ø9vØsØb2T

1 2 3 4 5 6 7 8 9 0 FF € € * , .
UN DEUX TROIS QUATRE CINQ SIX SEPT HUIT NEUF ZERO FRANC EURO AST VIRG PUNT

Italian Large Convenience Amount Font (Troy LCF Italian)

<Esc> (1Q<Esc> (sØp5.14h16.Ø9vØsØb3T

1 2 3 4 5 6 7 8 9 0 £ € € * , .
UNO DUE TRE QUATRO CINQUE SEI SETTE OTTO NOVE ZERO LIRA EURO AST VIRG PUNTO

Spanish Large Convenience Amount Font (Troy LCF Spanish)

<Esc> (1Q<Esc> (sØp5.14h16.Ø9vØsØb4T

1 2 3 4 5 6 7 8 9 0 \$ € € * , .
UNO DOS TRES CUATRO CINCO SEIS SIETE OCHO NUEVE CERO DOLAR EURO AST COMA PUNTO

International Convenience Amount Fonts (cont.)

British Small Convenience Amount Font (Troy SCF British)

<Esc> (2Q<Esc> (sØp6h22.68vØsØb1T

1 2 3 4 5 6 7 8 9 0 £ € € * , .
 ONE TWO THREE FOUR FIVE SIX SEVEN EIGHT NINE ZERO G.B.P EURO AST COM PER

French Small Convenience Amount Font (Troy SCF French)

<Esc> (2Q<Esc> (sØp6h22.68vØsØb2T

1 2 3 4 5 6 7 8 9 0 FF € € * , .
 UN DEUX TROIS QUATRE CINQ SIX SEPT HUIT NEUF ZERO FRANC EURO AST VIRG POINT

Italian Small Convenience Amount Font (Troy SCF Italian)

<Esc> (2Q<Esc> (sØp6h22.68vØsØb3T

1 2 3 4 5 6 7 8 9 0 £ € € * , .
 UNO DUE TRE QUATRO CINQUE SEI SETTE OTTO NOVE ZERO LIRA EURO AST VIRG PUNTO

Spanish Small Convenience Amount Font (Troy SCF Spanish)

<Esc> (2Q<Esc> (sØp6h22.68vØsØb4T

1 2 3 4 5 6 7 8 9 0 \$ € € * , .
 UNO DOS TRES CUATRO CINCO SEIS SIETE OCHO NUEVE CERO DOLAR EURO AST COMA PUNTO

PCL Font Collection

In addition to the TROY Security Printing fonts contained on the TROY Font Card, an extensive collection of PCL fonts have been included on the TROY Font Card as a value-added convenience to suit a wide variety of printing needs. Refer to the following pages for the PCL font list. The following examples may not be to scale.

Section 3

Using TROY Fonts

PCL Font Collection (cont.)

Typeface	Pitch/Point	Escape sequence	Font #
ABCDEFghijÀÂ°ÇÑ; Courier	Scale	<esc>([] <esc>(s0p [] h0s0b4099T	M1 0
ABCDEFghijÀÂ°ÇÑ; CG Times	Scale	<esc>([] <esc>(s1p [] v0s0b4101T	M1 1
ABCDEFghijÀÂ°ÇÑ; CG Times Bd	Scale	<esc>([] <esc>(s1p [] v0s3b4101T	M1 2
<i>ABCDEFghijÀÂ°ÇÑ;</i> CG Times It	Scale	<esc>([] <esc>(s1p [] v1s0b4101T	M1 3
<i>ABCDEFghijÀÂ°ÇÑ;</i> CG Times BdIt	Scale	<esc>([] <esc>(s1p [] v1s3b4101T	M1 4
ABCDEFghijÀÂ°ÇÑ; CG Omega	Scale	<esc>([] <esc>(s1p [] v0s0b4113T	M1 5
ABCDEFghijÀÂ°ÇÑ; CG Omega Bd	Scale	<esc>([] <esc>(s1p [] v0s3b4113T	M1 6
<i>ABCDEFghijÀÂ°ÇÑ;</i> CG Omega It	Scale	<esc>([] <esc>(s1p [] v1s0b4113T	M1 7
<i>ABCDEFghijÀÂ°ÇÑ;</i> CG Omega BdIt	Scale	<esc>([] <esc>(s1p [] v1s3b4113T	M1 8
<i>ABCDEFghijÀÂ°ÇÑ;</i> Coronet	Scale	<esc>([] <esc>(s1p [] v1s0b4116T	M1 9
ABCDEFghijÀÂ°ÇÑ; Clarendon CdBd	Scale	<esc>([] <esc>(s1p [] v4s3b4140T	M1 10
ABCDEFghijÀÂ°ÇÑ; Univers Md	Scale	<esc>([] <esc>(s1p [] v0s0b4148T	M1 11
ABCDEFghijÀÂ°ÇÑ; Univers Bd	Scale	<esc>([] <esc>(s1p [] v0s3b4148T	M1 12
<i>ABCDEFghijÀÂ°ÇÑ;</i> Univers MdIt	Scale	<esc>([] <esc>(s1p [] v1s0b4148T	M1 13
<i>ABCDEFghijÀÂ°ÇÑ;</i> Univers BdIt	Scale	<esc>([] <esc>(s1p [] v1s3b4148T	M1 14
ABCDEFghijÀÂ°ÇÑ; Univers CdMd	Scale	<esc>([] <esc>(s1p [] v4s0b4148T	M1 15
ABCDEFghijÀÂ°ÇÑ; Univers CdBd	Scale	<esc>([] <esc>(s1p [] v4s3b4148T	M1 16
<i>ABCDEFghijÀÂ°ÇÑ;</i> Univers CdMdIt	Scale	<esc>([] <esc>(s1p [] v5s0b4148T	M1 17
<i>ABCDEFghijÀÂ°ÇÑ;</i> Univers CdBdIt	Scale	<esc>([] <esc>(s1p [] v5s3b4148T	M1 18
ABCDEFghijÀÂ°ÇÑ; AntiqOlive	Scale	<esc>([] <esc>(s1p [] v0s0b4168T	M1 19

Section 3

Using TROY Fonts













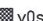
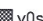

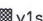


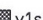
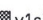
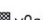
PCL Font Collection (cont.)

ABCDEFghijÀÂ°ÇÑ; AntiqOlive Bd	Scale	<esc>([] <esc>(s1p [] v0s3b4168T	M1 20
<i>ABCDEFghijÀÂ°ÇÑ;</i> AntiqOlive It	Scale	<esc>([] <esc>(s1p [] v1s0b4168T	M1 21
ABCDEFghijÀÂ°ÇÑ; Garamond Antiqua	Scale	<esc>([] <esc>(s1p [] v0s0b4197T	M1 22
ABCDEFghijÀÂ°ÇÑ; Garamond Hlb	Scale	<esc>([] <esc>(s1p [] v0s3b4197T	M1 23
<i>ABCDEFghijÀÂ°ÇÑ;</i> Garamond Krsv	Scale	<esc>([] <esc>(s1p [] v1s0b4197T	M1 24
<i>ABCDEFghijÀÂ°ÇÑ;</i> Garamond KrsvHlb	Scale	<esc>([] <esc>(s1p [] v1s3b4197T	M1 25
ABCDEFghijÀÂ°ÇÑ; Marigold	Scale	<esc>([] <esc>(s1p [] v0s0b4297T	M1 26
ABCDEFghijÀÂ°ÇÑ; Albertus Md	Scale	<esc>([] <esc>(s1p [] v0s1b4362T	M1 27
ABCDEFghijÀÂ°ÇÑ; Albertus Xb	Scale	<esc>([] <esc>(s1p [] v0s4b4362T	M1 28
ABCDEFghijÀÂ°ÇÑ; Arial	Scale	<esc>([] <esc>(s1p [] v0s0b16602T	M1 29
ABCDEFghijÀÂ°ÇÑ; Arial Bd	Scale	<esc>([] <esc>(s1p [] v0s3b16602T	M1 30
<i>ABCDEFghijÀÂ°ÇÑ;</i> Arial It	Scale	<esc>([] <esc>(s1p [] v1s0b16602T	M1 31
ABCDEFghijÀÂ°ÇÑ; Arial Bdit	Scale	<esc>([] <esc>(s1p [] v1s3b16602T	M1 32
ABCDEFghijÀÂ°ÇÑ; TimesNewRmn	Scale	<esc>([] <esc>(s1p [] v0s0b16901T	M1 33
ABCDEFghijÀÂ°ÇÑ; TimesNewRmn Bd	Scale	<esc>([] <esc>(s1p [] v0s3b16901T	M1 34
<i>ABCDEFghijÀÂ°ÇÑ;</i> TimesNewRmn It	Scale	<esc>([] <esc>(s1p [] v1s0b16901T	M1 35
<i>ABCDEFghijÀÂ°ÇÑ;</i> TimesNewRmn Bdit	Scale	<esc>([] <esc>(s1p [] v1s3b16901T	M1 36
ABCDEFghijÀÂ°ÇÑ; Helvetica	Scale	<esc>([] <esc>(s1p [] v0s0b24580T	M1 37
ABCDEFghijÀÂ°ÇÑ; Helvetica Bd	Scale	<esc>([] <esc>(s1p [] v0s3b24580T	M1 38
<i>ABCDEFghijÀÂ°ÇÑ;</i> Helvetica Ob	Scale	<esc>([] <esc>(s1p [] v1s0b24580T	M1 39
ABCDEFghijÀÂ°ÇÑ; Helvetica BdOb	Scale	<esc>([] <esc>(s1p [] v1s3b24580T	M1 40

Section 3

Using TROY Fonts

PCL Font Collection (cont.)

ABCDEFghijÀÂ°ÇÑ; Helvetica Nr	Scale	<esc>(<input type="checkbox"/> <esc>(s1p  v4s0b24580T	M1 41
ABCDEFghijÀÂ°ÇÑ; Helvetica NrBd	Scale	<esc>(<input type="checkbox"/> <esc>(s1p  v4s3b24580T	M1 42
ABCDEFghijÀÂ°ÇÑ; Helvetica NrOb	Scale	<esc>(<input type="checkbox"/> <esc>(s1p  v5s0b24580T	M1 43
ABCDEFghijÀÂ°ÇÑ; Helvetica NrBdOb	Scale	<esc>(<input type="checkbox"/> <esc>(s1p  v5s3b24580T	M1 44
ABCDEFghijÀÂ°ÇÑ; Palatino Rmn	Scale	<esc>(<input type="checkbox"/> <esc>(s1p  v0s0b24591T	M1 45
ABCDEFghijÀÂ°ÇÑ; Palatino Bd	Scale	<esc>(<input type="checkbox"/> <esc>(s1p  v0s3b24591T	M1 46
ABCDEFghijÀÂ°ÇÑ; Palatino It	Scale	<esc>(<input type="checkbox"/> <esc>(s1p  v1s0b24591T	M1 47
ABCDEFghijÀÂ°ÇÑ; Palatino BdIt	Scale	<esc>(<input type="checkbox"/> <esc>(s1p  v1s3b24591T	M1 48
ABCDEFghijÀÂ°ÇÑ; ITCAvantGard Bk	Scale	<esc>(<input type="checkbox"/> <esc>(s1p  v0s0b24607T	M1 49
ABCDEFghijÀÂ°ÇÑ; ITCAvantGard Db	Scale	<esc>(<input type="checkbox"/> <esc>(s1p  v0s2b24607T	M1 50
ABCDEFghijÀÂ°ÇÑ; ITCAvantGardBkOb	Scale	<esc>(<input type="checkbox"/> <esc>(s1p  v1s0b24607T	M1 51
ABCDEFghijÀÂ°ÇÑ; ITCAvantGardDbOb	Scale	<esc>(<input type="checkbox"/> <esc>(s1p  v1s2b24607T	M1 52
ABCDEFghijÀÂ°ÇÑ; ITCBookman Lt	Scale	<esc>(<input type="checkbox"/> <esc>(s1p  v0s-3b24623T	M1 53
ABCDEFghijÀÂ°ÇÑ; ITCBookman Db	Scale	<esc>(<input type="checkbox"/> <esc>(s1p  v0s2b24623T	M1 54
ABCDEFghijÀÂ°ÇÑ; ITCBookman LtIt	Scale	<esc>(<input type="checkbox"/> <esc>(s1p  v1s-3b24623T	M1 55
ABCDEFghijÀÂ°ÇÑ; ITCBookman DbIt	Scale	<esc>(<input type="checkbox"/> <esc>(s1p  v1s2b24623T	M1 56
ABCDEFghijÀÂ°ÇÑ; NwCentSchlbk Rmn	Scale	<esc>(<input type="checkbox"/> <esc>(s1p  v0s0b24703T	M1 57
ABCDEFghijÀÂ°ÇÑ; NwCentSchlbk Bd	Scale	<esc>(<input type="checkbox"/> <esc>(s1p  v0s3b24703T	M1 58
ABCDEFghijÀÂ°ÇÑ; NwCentSchlbk It	Scale	<esc>(<input type="checkbox"/> <esc>(s1p  v1s0b24703T	M1 59
ABCDEFghijÀÂ°ÇÑ; NwCentSchlbkBdIt	Scale	<esc>(<input type="checkbox"/> <esc>(s1p  v1s3b24703T	M1 60
ABCDEFghijÀÂ°ÇÑ; Times Rmn	Scale	<esc>(<input type="checkbox"/> <esc>(s1p  v0s0b25093T	M1 61

Section 3

Using TROY Fonts

PCL Font Collection (cont.)

ABCDEFghijÀÂ°ÇÑ; Times Bd	Scale	<esc>([] <esc>(s1p [] v0s3b25093T	M1 62
ABCDEFghijÀÂ°ÇÑ; Times It	Scale	<esc>([] <esc>(s1p [] v1s0b25093T	M1 63
ABCDEFghijÀÂ°ÇÑ; Times Bdit	Scale	<esc>([] <esc>(s1p [] v1s3b25093T	M1 64
ABCDEFghijÀÂ°ÇÑ; ZapfChanceryMdit	Scale	<esc>([] <esc>(s1p [] v1s0b45099T	M1 65
ABXΔEφγηιφΥ'≥×∂÷ Symbol	Scale	<esc>(19M<esc>(s1p [] v0s0b16686T	M1 66
ABXΔEφγηιφΥ'≥×∂÷ SymbolPS	Scale	<esc>(19M<esc>(s1p [] v0s0b45358T	M1 67
Ⓐ Ⓑ Ⓒ Ⓓ Ⓔ Ⓕ Ⓖ Ⓗ Ⓘ Ⓚ Ⓛ Ⓜ Ⓝ Ⓟ Ⓡ Ⓢ Ⓣ Ⓡ Ⓢ Ⓣ Ⓡ Ⓢ Ⓣ Wingdings	Scale	<esc>(579L<esc>(s1p [] v0s0b31402T	M1 68
∇BCDE†ǻµ! ¢ HLV Upside Down	Scale	<esc>(9U<esc>(s1p [] v0s33b24580T	M1 83
⌘ ⌚ ⌛ ⌜ ⌝ ⌞ ⌟ ⌠ ⌡ ⌢ ⌣ ⌤ ⌥ ⌦ ⌧ ⌨ 〈 〉 ⌫ ⌬ ⌭ ⌮ ⌯ ⌰ ⌱ ⌲ ⌳ ⌴ ⌵ ⌶ ⌷ ⌸ ⌹ ⌺ ⌻ ⌼ ⌽ ⌾ ⌿ Ⓚ Ⓛ Ⓜ Ⓝ Ⓟ Ⓡ Ⓢ Ⓣ Ⓡ Ⓢ Ⓣ Ⓡ Ⓢ Ⓣ ZapfDingbats	Scale	<esc>(14L<esc>(s1p [] v0s0b45101T	M1 84
 Postnet Reg	Scale	<esc>(15Y<esc>(s1p [] v0s0b24770T	M1 85
''' Postnet Rev	Scale	<esc>(15Y<esc>(s1p [] v0s33b24770T	M1 86
ABCDEFghijÀÂ°ÇÑ; Courier Bd	Scale	<esc>([] <esc>(s0p [] h0s3b4099T	M1 87
ABCDEFghijÀÂ°ÇÑ; Courier It	Scale	<esc>([] <esc>(s0p [] h1s0b4099T	M1 88
ABCDEFghijÀÂ°ÇÑ; Courier Bdit	Scale	<esc>([] <esc>(s0p [] h1s3b4099T	M1 89
ABCDEFghijÀÂ°ÇÑ;¿ LetterGothic	Scale	<esc>([] <esc>(s0p [] h0s0b4102T	M1 90
ABCDEFghijÀÂ°ÇÑ;¿ LetterGothic Bd	Scale	<esc>([] <esc>(s0p [] h0s3b4102T	M1 91
ABCDEFghijÀÂ°ÇÑ;¿ LetterGothic It	Scale	<esc>([] <esc>(s0p [] h1s0b4102T	M1 92
ABCDEFghij# \$@'^`{ }~1 Naskh	Scale	<esc>([] <esc>(s0p [] h0s0b4124T	M1 93
ABCDEFghij# \$@'^`{ }~1 Naskh Bd	Scale	<esc>([] <esc>(s0p [] h0s3b4124T	M1 94
ABCDEFghij# \$@'^`{ }~1 Koufi	Scale	<esc>([] <esc>(s0p [] h0s0b4264T	M1 95
ABCDEFghij# \$@'^`{ }~1 Koufi Bd	Scale	<esc>([] <esc>(s0p [] h0s3b4264T	M1 96

Trouble-shooting by Symptom

The following troubleshooting table provides solutions to the most common MICR printing problems. Some of the messages may not apply to your TROY Security Printing Solution. Visually inspect your MICR documents using the *TROY MICR Document Template* where appropriate.

NOTE: This table does not cover all of the ANSI and banking specifications that MICR-encoded documents must meet. Refer to the *TROY MICR Basics Handbook* for more information on MICR specifications and check design.

Condition	Possible Cause	Solution
Incorrect data in MICR line (account #, bank #, etc.).	Error typing in the account #, etc.	Re-enter the correct data.
Incorrect format of fields in MICR line (according to your bank's specifications).	Error typing in the field information.	Re-enter the correct data. Ask your bank for its specification sheet or copy the field format from your old checks, including any spaces.
Vertical streaking or smearing throughout document.	Problem with the Hewlett-Packard printer or TROY MICR toner cartridge.	Refer to the troubleshooting section in the printer user's manual.
Horizontal streaking in MICR clear band during document processing.	Problem with the reader/sorter machine.	The reader/sorter machine must be cleaned and checked or adjusted.

Trouble-shooting by Symptom (cont.)

<p>600 dpi MICR font not used in MICR line (an incorrect font such as Courier or Times Roman was used instead).</p>	<p>No MICR font installed.</p> <p>MICR mode disabled and an attempt was made to use a TROY MICR font.</p> <p>Software error.</p> <p>MICR font requested orientation (portrait or landscape) not installed in the printer.</p> <p>Non-TROY MICR font was used.</p> <p>Font escape sequence coding error.</p>	<p>Install the TROY Font DIMM and reprint the document.</p> <p>Consult your software dealer.</p> <p>Enable MICR mode by issuing the appropriate escape sequence via your check writing software.</p> <p>Install the correct orientation of MICR font via system DIMM.</p> <p>Use the TROY MICR font or consult the non-TROY MICR font manufacturer for assistance.</p> <p>Verify the escape sequence accuracy.</p>
<p>MICR clear band has magnetically chargeable printing besides the MICR line on front or backside of document.</p>	<p>Border, signature, or other printing extends into MICR clear band on front or back.</p> <p>Laser-printed items extend into MICR clear band on backside of the check.</p>	<p>Reformat your document design to ensure nothing besides the MICR line appears in the MICR clear band.</p> <p>Reformat your document design or other laser-printed items so that there is no MICR information in the clear band on the backside of the check.</p>

Trouble-shooting by Symptom (cont.)

<p>MICR clear band has extra printing (such as toner splatter) besides the MICR line on front or backside of document.</p>	<p>Printer density setting is too dark.</p> <p>Printer fusing unit is contaminated.</p> <p>Faulty MICR toner cartridge.</p> <p>Use of non-TROY MICR toner cartridge.</p>	<p>Use TROY MICR defaults.</p> <p>Refer to printer user's manual for cleaning instructions.</p> <p>Try another TROY MICR toner cartridge. If cartridge is faulty, return to the dealer.</p> <p>Use a TROY MICR toner cartridge, or consult TROY Technical Support for assistance.</p>
<p>MICR line is skewed on document.</p>	<p>Your MICR paper was cut or perforated inaccurately (lower edge of paper is not perpendicular to the right and left edges of paper).</p> <p>Your MICR paper has changed properties due to environmental conditions in storage or handling.</p> <p>Paper incorrectly loaded.</p> <p>Faulty paper transport system in printer.</p>	<p>Measure your MICR paper and/or perforation lines to ensure your MICR-encoded documents fall within ANSI specifications for document size. Ask your paper vendor for correctly sized MICR paper.</p> <p>Measure your MICR paper and/or perforation lines to ensure your MICR-encoded documents fall within ANSI specifications for document size.</p> <p>If using MP tray, paper width guide should lightly touch right side of paper stack.</p> <p>Try non-MICR paper to verify the problem. Contact TROY Technical Support if problem is verified on non-MICR paper.</p>

Trouble-shooting by Symptom (cont.)

<p>MICR line not positioned correctly on the document (vertically and horizontally).</p>	<p>Your MICR paper was cut or perforated inaccurately (paper is too short/long or narrow/wide).</p> <p>Software registration is off (software is positioning data incorrectly on the printed page).</p> <p>Printer registration discrepancies (small inconsistencies in positioning of the image on the printed page)</p> <p>Faulty paper transport system in printer.</p>	<p>Measure your MICR paper and/or perforation lines to ensure your MICR-encoded documents fall within ANSI specifications for document size. Ask your paper vendor for correctly sized MICR paper.</p> <p>Make adjustments in your software application to adjust the positioning of the MICR line. Use the TROY MICR Document Template to verify all adjustments to the MICR line.</p> <p>Small errors in the printer's registration can change the position of the MICR line, which is most noticeable on the trailing edge of the printed page. If the MICR line on your checks is positioned on trailing edge of the page (the edge of the page that exits the printer last), try using the TROY printer's Auto-Rotate feature to place the MICR line on the leading edge of the page to avoid any small registration errors that would significantly change the position of the MICR on your printed checks.</p> <p>Measure your MICR paper. If cut to correct size, consult your software vendor for assistance.</p> <p>Try non-MICR paper to verify the problem. Consult the printer user's manual or TROY Technical support if problem is verified on non-MICR paper.</p>
--	--	---

Trouble-shooting by Symptom (cont.)

<p>MICR characters are too thick or too thin.</p>	<p>Printer density setting is too dark or too light.</p> <p>Your MICR toner cartridge is nearly empty.</p> <p>Your MICR paper is out of specification so that toner does not adhere properly to the paper.</p> <p>Faulty MICR toner cartridge.</p> <p>Use of Non-TROY MICR toner or font.</p>	<p>Use TROY MICR defaults.</p> <p>TROY MICR toner cartridge should not be used if any print fading is visible across the document.</p> <p>Refer to TROY MICR paper specifications elsewhere in this guide and consult your paper vendor to ensure you have the correct paper (including correctly preprinted background areas). Also, check to ensure your paper has not altered due to environmental conditions during storage and handling.</p> <p>Try another TROY MICR toner cartridge. If the cartridge is faulty, contact TROY Technical Support for assistance.</p> <p>Use TROY MICR toner or font, or consult TROY Technical Support for assistance.</p>
---	---	--

Trouble-shooting by Symptom (cont.)

<p>MICR characters are broken, there are voids in characters or toner rubs off.</p>	<p>Your MICR paper is out of specification so that toner does not adhere properly to the paper.</p> <p>Faulty MICR toner cartridge.</p> <p>Use of Non-TROY MICR toner cartridge.</p> <p>Printer fusing unit is faulty.</p>	<p>Refer to the TROY MICR paper specifications and consult your paper vendor to ensure you have the correct paper (including correctly preprinted background areas). Also, check to ensure your paper has not altered due to environmental conditions during storage and handling.</p> <p>Try another TROY MICR toner cartridge. If cartridge is faulty, return to dealer.</p> <p>Use a TROY MICR toner cartridge, or consult TROY Technical Support for assistance.</p> <p>Confirm by verifying with a non-MICR application. Contact TROY Technical Support for instructions.</p>
<p>Voids in characters in MICR line or other text.</p>	<p>Transfer roller wear (check for page count of greater than 100,000).</p>	<p>Replace transfer roller.</p>
<p>MICR character spacing and positioning are not correct.</p>	<p>Error in typing MICR line information.</p> <p>Software placement of characters is incorrect.</p>	<p>Re-enter correct data. (Do not forget to enter the correct number of spaces where required.) If using TROY MICR fonts in Windows, ensure the point size is set to 12 pt.</p> <p>Consult your software dealer.</p>

Trouble-shooting by Symptom (cont.)

<p>Your bank reports a high reject rate when processing your TROY MICR-printed documents.</p> <p>NOTE: This section covers conditions not addressed above. You should also investigate all of the items described above as possible causes of bank rejects as well as the other ANSI MICR specifications not covered in this table.</p>	<p>A Non-TROY MICR toner was used.</p> <p>The bank-of-deposit made a typing or imprinting error when they encoded the check AMOUNT onto the right end of the MICR line.</p> <p>Your MICR paper is out of specification so that your documents tend to jam or tear inside bank processing equipment.</p> <p>Documents were folded, spindled, or otherwise roughly handled before they reached the bank-of-deposit.</p> <p>Your bank's reader/sorter equipment is out of adjustment.</p>	<p>Print test documents using TROY MICR toner or consult the non-TROY manufacturer for assistance.</p> <p>Ask your bank or one of the document testing facilities in the list following this table to determine if the MICR line error is in the TROY MICR-printed portion of the bank-encoded portion (many errors are bank induced).</p> <p>Observe the condition of your processed checks. Refer to this guide for information on TROY and ANSI MICR paper specifications. Your paper vendor or bank may also provide assistance.</p> <p>Consider sturdier MICR paper or improved check-handling processes with your regular recipients.</p> <p>Ask your bank for assistance in determining the cause of your rejects.</p>
--	--	---

Trouble-shooting by Symptom (cont.)

<p>MICR characters appear smeared after processing by a bank.</p>	<p>A Non-TROY MICR toner was used.</p> <p>Your MICR paper is out of specification so that toner does not adhere properly to the paper.</p> <p>Your bank's reader/sorter equipment is out of adjustment.</p>	<p>Print test documents using TROY MICR toner or consult the non-TROY manufacturer for assistance.</p> <p>Refer to TROY MICR paper specifications and consult your paper vendor to ensure you have the correct paper (including correctly preprinted background areas). Also, check to ensure your paper has not altered due to environmental conditions before printing the checks.</p> <p>Ask your bank for assistance in determining the cause of your rejects.</p>
---	---	--

Software Uninstall Procedures

Uninstall the TROY Screen Fonts

In the event you wish to reinstall or permanently remove the TROY Security Printing Solution support files and utilities, use the following procedures to properly uninstall (remove) all TROY software from your computer.

1. Close all applications before uninstalling the TROY screen fonts.
2. From the **Start** menu, click on **Settings**, and then click on **Control Panel**.
3. Double-click on the **Fonts** folder icon. Locate the TROY screen font installed (refer to the MICR font facsimile example on the previous page for font names).
4. Right-click on the TROY screen font to be uninstalled, and then click on **Delete** from the pull-down menu. A confirmation window will appear with the prompt, "**Are you sure you want to delete these fonts?**". Click on **YES** to confirm the deletion. The TrueType™ MICR screen font will be removed.
5. Repeat steps two and three for each TROY screen font to be uninstalled.
6. Close the **Fonts Folder** and **Control Panel**.
7. If removing all the TROY support files, proceed to the next section for removing all the TROY support files for Microsoft® Windows™.

Uninstall the TROY Support Files

1. Close all applications before uninstalling the TROY support files.
2. From the **Start** menu, click on **Settings**, and then click on **Printers**.
3. Right-click on the **Hewlett Packard LaserJet PCL 5e** (or renamed TROY printer) printer icon, and then click on **Properties** from the pull-down menu.
4. Click on the **Configure** tab located at the top of the **Properties** window.
5. Click on the **More** button located within the **Other Options** category.
6. Click on the **Configure...** button located within the **Fonts** category.
7. Within the **Configure Font Cards** window, locate the section labeled **Installed Cards**. Click on **TROY Security Font Collection** listed under **Installed Cards** (**TROY International Security Font Collection** for international support). Click on **Remove** to uninstall the TROY support files. The entry will be deleted from the **Installed Cards** list.
8. Close all remaining open windows. All the TROY support files have been removed.

Uninstall the TROY Printer Utility

1. Close all applications before uninstalling the TROY Printer Utility files.
2. From the *START* menu, click on *Settings*, and then click on *Control Panel*.
3. Click on *Add/Remove* Programs.
4. Locate the *TROY Printer Utility* from the listing.
5. Click on *Add/Remove*.
6. Follow the screen prompts.
7. Close all remaining open windows. The TROY Printer Utility files have been removed.

Installing the TROY Font Card



IMPORTANT: Ensure the printer power is switched OFF, and then disconnect the printer power cord from the printer.

1. Remove the plastic panel on the right side of the printer by sliding it toward the back of the printer (Figure 1).
2. Open the metal access door (Figure 2).
3. Remove the TROY Font Card from the protective anti-static bag.
4. Carefully insert the TROY Font Card into the first USB slot at the bottom of the electronics cage (Figure 3, 4). The TROY Font Card connector and USB slot are keyed, allowing the TROY Font Card to be plugged into the USB slot in one orientation only. Do not force the Font Card into the USB slot. Ensure the TROY Font Card is fully inserted into the USB slot.
5. Close the metal access door. Be sure it snaps into place and is fully closed.
6. Replace the plastic panel by sliding it onto the side of the printer until it snaps into place.
7. Reconnect the printer power cord, and then switch the printer power ON.
8. Refer to the *TROY Quick-Start Guide* for instructions on installing the TROY support files on your computer.

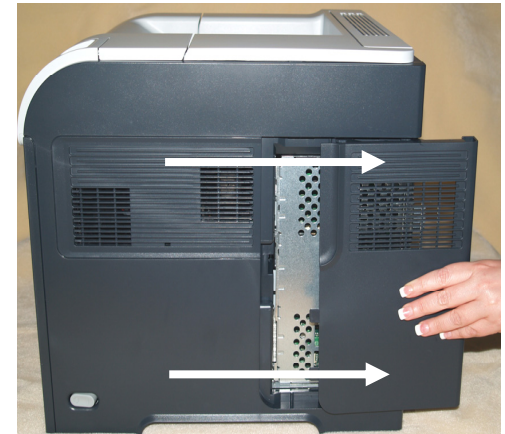


Figure 1



Figure 2

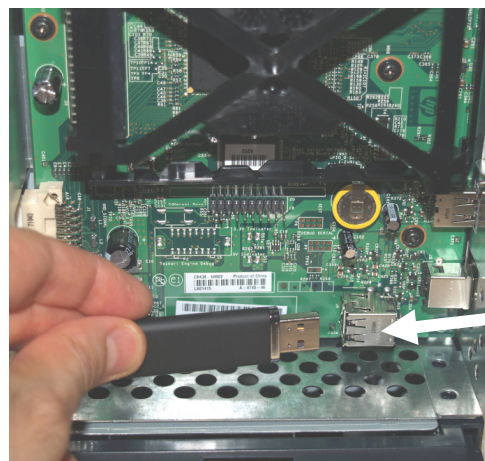


Figure 3

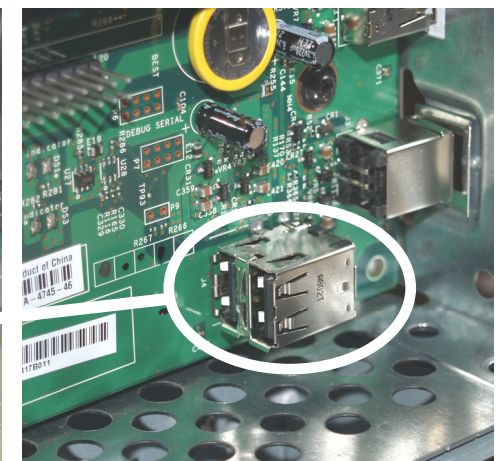


Figure 4

NOTE: If assistance is required, call TROY Technical Support at (800) 332-6427, Monday through Friday, 8:00 AM to 8:00 PM, Eastern Standard Time. Customers outside the United States, please call (304) 232-0899.