



Font Memory Card Kit User's Guide

(For use with Hewlett-Packard 3005 Series Printers)

This User's Guide is for TROY Font Memory Card Kit users only. If you purchased a TROY Security Printing Solutions Printer, please refer to the TROY Security Printing Solutions User's Guide provided on the TROY Security Printing Solutions CD.

Acknowledgements

Some of the TROY products include cryptographic software written by Eric Young (eay@cryptsoft.com)
The Twofish encryption/decryption source code used in the TROY Memory Card is provided by Cryptopane.

TROY is a registered trademark. TROYmark™ and AutoProtect™ are registered trademarks of TROY Group, Inc. All rights reserved.

Microsoft Windows, PostScript, TrueType, LaserJet, and all other product names mentioned in this publication are trademarks or registered trademarks of their respective companies.

Information and descriptions contained herein are the property of TROY Group, Inc. Such information and descriptions may not be copied, disseminated, or distributed without the express written consent of TROY Group, Inc. This publication is subject to change without notice.

© 2003 – 2006 TROY Group, Inc.
Printed in the United States of America
September 22, 2006

Table of Contents

Preface

This manual is designed and formatted for use as an online document (viewed on your computer screen). The document can also be printed; however, it is recommended that you print only the pages applicable to your security printing solution. Printing the entire document will print all the pages for all of the TROY Security Printing Solutions covered in this manual. For best results, you must use Adobe Acrobat Reader 5.0 or higher to view or print this document. Earlier versions of Adobe Acrobat Reader will not produce a properly formatted document on your computer screen. The latest version of Adobe Acrobat Reader is available as a free download from the Adobe website at <http://www.adobe.com>.

Conventions

This User's Guide uses these conventions:

Bold indicates emphasis or a minor heading.

Italic refers to a document title or is used for emphasis.

COURIER type indicates text visible on a computer screen or keys on your computer keyboard.

DISPLAY FONT indicates text visible on the printer control panel display.

The letter *l* is used in examples to distinguish the small letter l from the numeral 1 (one).

The character Ø is used in examples to distinguish the letter O from the numeral 0 (zero).

<Esc>, <CR>, <LF>, <FF>, etc. are control characters. Use a text editor to enter the equivalent of the character. For example, to get <Esc> using a DOS text editor, hold down the **Ctrl** key; and press the [(left square bracket) key. Other text editors may vary.

NOTE: Notes contain important information set off from the text.

CAUTION: Caution messages appear before procedures, which if not observed, could result in loss of data or in damage to equipment.

WARNING: Warning messages alert you to a specific procedure or practice, which if not followed correctly, could cause serious personal injury.

Table of Contents

Section 1 – Features Overview

| | |
|--------------------------|-----|
| Introduction | 1-1 |
| TROY Security Fonts..... | 1-1 |

Section 2 – Using the TROY Printer Utility

| | |
|--|-----|
| Introduction | 2-1 |
| Menu Structure..... | 2-1 |
| Basic Printer Utility Operations | 2-2 |
| Printing Demo Pages | 2-3 |
| Accessing Fonts Using Non-Windows Applications | 2-3 |
| Verifying Windows Font Support..... | 2-3 |
| Verifying PCL 5e Communication | 2-5 |
| Downloading Files to the Printer | 2-6 |
| Obtaining Technical Assistance | 2-7 |

Section 3 – Using TROY Fonts

| | |
|---|-----|
| Introduction | 3-1 |
| Accessing and Using TROY Fonts | 3-1 |
| Accessing the TROY Fonts Using Windows Applications..... | 3-1 |
| Accessing the TROY Fonts Using Non-Windows Applications | 3-1 |
| Using TROY MICR Fonts | 3-2 |
| Using the Convenience Amount Fonts..... | 3-2 |
| Using the TROY Security Fonts..... | 3-2 |
| Using the TROY OCR Fonts | 3-2 |
| Using the Reverse Helvetica Font | 3-2 |
| Using the TROY POSTNET Font..... | 3-2 |
| Using the British Pound and Euro Symbols | 3-2 |
| Using Printer Fonts and Screen Fonts..... | 3-3 |

Table of Contents

| | |
|--|------|
| MICR Font Guidelines | 3-4 |
| Font Character Mapping | 3-5 |
| Determining a Character Mapping | 3-6 |
| Accessing Unmapped Characters | 3-6 |
| Standard ASCII Character Set | 3-7 |
| TROY MICR E-13B 12-Point Font | 3-8 |
| TROY MICR CMC-7 12-Point Font | 3-9 |
| TROY Enhanced Convenience Amount (Scalable) | 3-9 |
| TROY Large Convenience Amount 18-Point Font | 3-10 |
| TROY Small Convenience Amount 24-Point Font | 3-10 |
| TROY Security Font | 3-11 |
| TROY Security Font (Spanish) | 3-11 |
| TROY Reverse Helvetica Font | 3-12 |
| TROY OCR-A Font (Scalable) | 3-13 |
| TROY OCR-B Font (Scalable) | 3-15 |
| TROY UPC-A Barcode | 3-17 |
| TROY UPC-E Barcode | 3-18 |
| TROY EAN-8 Barcode | 3-19 |
| TROY EAN-13 Barcode | 3-20 |
| TROY BC25 Barcode | 3-21 |
| TROY BC39 Barcode | 3-22 |
| TROY BC128 Barcode | 3-23 |
| TROY POSTNET | 3-24 |
| TROY POSTNET Reverse (optional) | 3-25 |
| International Convenience Amount Fonts | 3-26 |
| British Large Convenience Amount Font | 3-26 |
| French Large Convenience Amount Font | 3-26 |



Table of Contents

| | |
|---|------|
| Italian Large Convenience Amount Font..... | 3-26 |
| Spanish Large Convenience Amount Font | 3-26 |
| British Small Convenience Amount Font..... | 3-27 |
| French Small Convenience Amount Font | 3-27 |
| Italian Small Convenience Amount Font | 3-27 |
| Spanish Small Convenience Amount Font..... | 3-27 |

Section 4 – Troubleshooting / Error Messages

| | |
|--|-----|
| Troubleshooting by Symptom | 4-1 |
| Troubleshooting by Printer Control Panel Display Message | 4-9 |

Introduction

Thank you for purchasing your TROY Font Memory Card Kit. You have chosen the highest quality MICR (Magnetic Ink Character Recognition) printing solution available today that offers convenience, flexibility, and precision for printing high-quality MICR documents.

The TROY Font Memory Card is designed for use in selected Hewlett-Packard LaserJet printers and features an enhanced collection of MICR, OCR (Optical Character Recognition), and security fonts designed for printing financial documents. The TROY Font Memory Card can be added to a standard Hewlett Packard printer. Refer to the TROY Quick-Start Guide for information on installing the TROY Font Memory Card into a Hewlett-Packard printer and for installing the necessary TROY support files.

TROY Security Fonts

Your TROY Font Memory Card Kit includes a collection of high-quality MICR fonts (E13-B, CMC-7) and other security fonts programmed into the TROY Font Memory Card. See Section 3 – *Using TROY Fonts* for more information. The TROY Security font collection includes the following fonts:

| TROY Font | Description |
|--|---|
| E13-B MICR Font | Used to print the MICR line at the bottom of the check (United States and selected countries) |
| CMC-7 MICR Font | Used to print the MICR line at the bottom of the check (if your bank of deposit requires this font) |
| Enhanced Convenience Font | Used to print the convenience amount information on the check (this font is scalable) |
| Large Convenience Font | Used to print the convenience amount information on the check (this font is non-scalable) |
| Small Convenience Font | Used to print the convenience amount information on the check (this font is non-scalable) |
| TROY Reverse Helvetica Font | Used to print names and addresses on the back of transparent envelope windows for use in pressure-seal machines |
| British Pound and Euro Currency Symbols | Used as the British or European currency symbol for the respective country (replaces the U.S. dollar sign). These symbols can be selected to print in the audit reports. |
| TROY Barcode and POSTNET Fonts | Used to print several types of industry-standard barcodes for a variety of uses, and also includes a POSTNET font for printing the U.S. postal bar code that represents the 9-digit zip code printed below the postal address |
| TROY Security Font | Used to print the amount information on the check (English / Spanish) (this font is scalable) |
| TROY OCR Font (type A and B) | Used to print any information (names, addresses, amounts) that is to be read by automated readers using optical character recognition (this font is scalable) |
| International Convenience Fonts | Used to print the convenience amount on the check in any one of five languages (available on the TROY Security Printing Solutions CD supplied with your TROY Font Memory Card Kit) |

Introduction

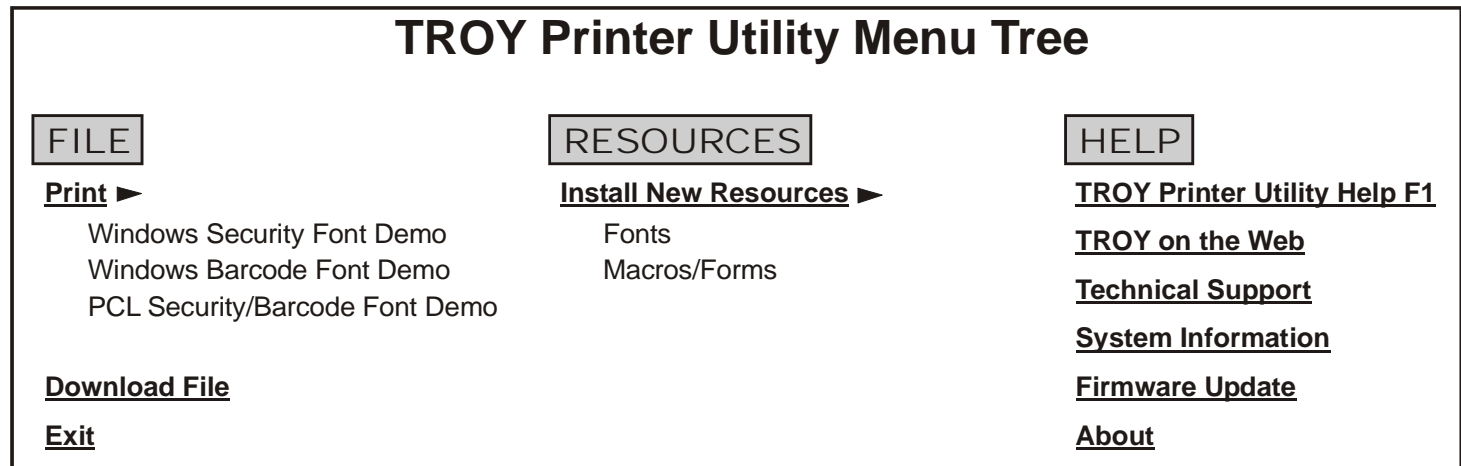
The TROY Printer Utility is an easy-to-use Microsoft Windows-based utility designed to assist you with the management of a TROY Font Memory Card. The TROY Printer Utility allows the system administrator to perform the following functions:

- View system information
- Print Windows Security and Barcode demonstration pages
- Print PCL Security/Barcode Font demonstration page
- Obtain technical assistance
- Access the TROY Web site for printer firmware updates, drivers, and product/supplies information.

The TROY Printer Utility is included on the *TROY Security Printing Solutions* CD supplied with your TROY Font Memory Card Kit. Follow the instructions in the *TROY Font Memory Card Kit Quick-Start Guide* to install the TROY Printer Utility.

Menu Structure

The user-friendly features of the TROY Printer Utility are conveniently grouped under three pull-down menus as shown below. An arrow (>) next to the menu selection indicates that additional selections are available for that menu item. It is suggested that you print out this page for use as a convenient reference when using the TROY Printer Utility.

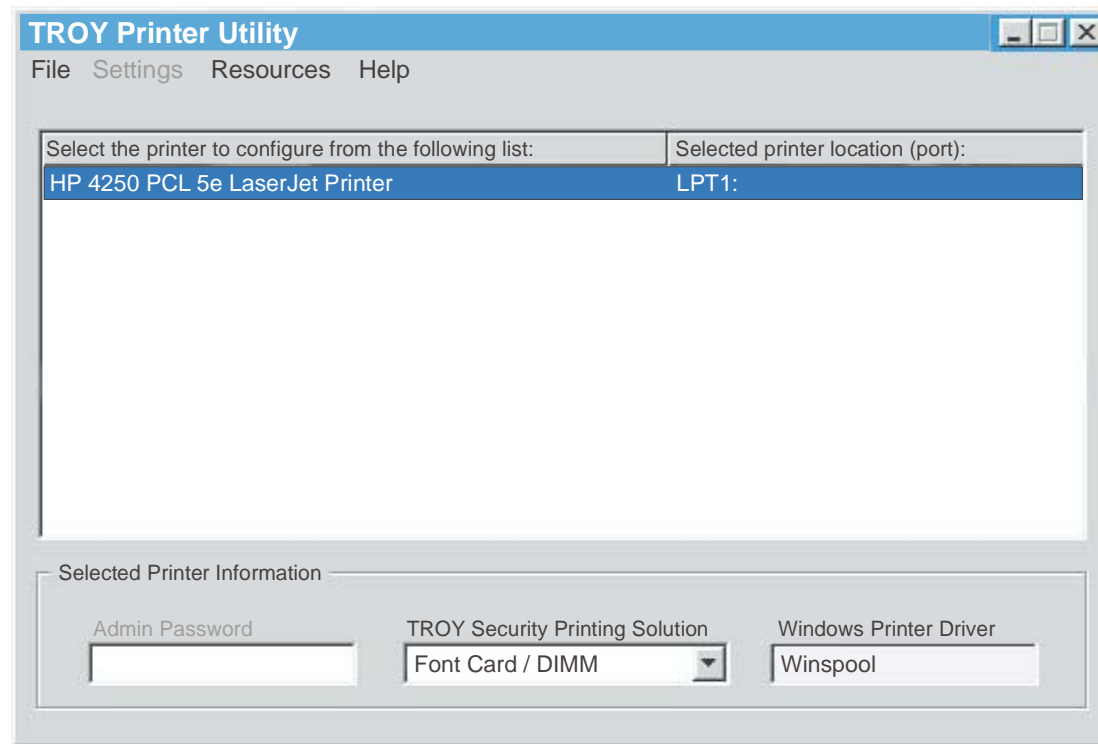


NOTE: The grayed-out menu items displayed in the TROY Printer Utility are for features that apply only to TROY printers and Hewlett-Packard printers that have the TROY MICR Secure Memory Card installed.

Basic Printer Utility Operations

TO ACCESS THE TROY PRINTER UTILITY:

1. Click on the Microsoft Windows *Start* button, select *Programs, MICR by TROY*, and then click on the *TROY Printer Utility* icon. The Printer Utility main window will appear.
2. Click on the Hewlett-Packard printer you wish to manage.



3. Select *Font Card / DIMM* from the TROY Security Printing Solution drop-down menu. For convenience, this setting is saved when you exit the TROY Printer Utility. This option simplifies the TROY Printer Utility interface by allowing access to features that are only available within your product type.

Printing Demo Pages

The TROY Printer Utility provides the ability to generate a Windows Security Font, Windows Barcode Font, and PCL Security/Barcode Font demonstration page. Use the Windows Security Font demonstration page if you are using a Windows-based printing application, or use the PCL Security/Barcode Font demonstration page if you are using a non-Windows-based printing application. Use these demonstration pages to verify the TROY Security fonts generated by your printer.

Accessing Fonts Using Non- Windows Applications

If you are using a non-Windows application to print MICR documents, the escape sequence for each font must be programmed into the application in order to “call” each of the selected fonts. The <Esc> character is ASCII character number 27 (hexadecimal number 1B). Refer to Section 3 – *Using TROY Fonts* for the specific escape sequence (displayed above each character map) used to call each of the TROY fonts.

Verifying Windows Font Support

To verify that the TROY Windows font support files were properly installed on your system, demonstration documents are provided through the TROY Printer Utility in Windows that can be printed out to visually identify all security and/or barcode fonts downloaded to the TROY printer. Make sure your TROY printer is properly setup, powered ON, and is online before printing the Windows Security Font or Windows Barcode Font Demonstration page(s).

TO PRINT THE WINDOWS SECURITY (MICR) FONT DEMONSTRATION PAGE:

1. From the *Main Window*, click on the printer you wish to manage.
2. From the *Main Window*, click on *File, Print*, and then click on *Windows Security (MICR) Font Demo*. The printer will automatically print the Windows Security Font Demonstration page (see example on next page).
3. Compare the actual TROY security fonts (the actual fonts generated by your printing system) shown in the right-hand column with the facsimile image of these fonts printed in the center column (a digitized image designed to look exactly like the actual fonts generated by your system – see example on the next page).

If the support files were properly installed, the actual TROY security and/or barcode fonts displayed in the right-hand column should appear identical to the facsimile fonts displayed in the center column. If the actual fonts do not match the facsimile fonts printed on the demonstration document (fonts not printed correctly or fonts missing on the printout), review the installation steps in this document. If further assistance is required, contact TROY Technical Support.

Verifying Windows Font Support (cont.)

TROY Security Font Collection

Microsoft Windows Test Page

=====

This document displays how the TROY Security Font Collection should appear when printed through Microsoft Windows (Facsimile Font Image) and how they actually print through your Microsoft Windows printer driver configuration (Actual Printed Font) to a TROY Security Printing Solution.

Compare the fonts printed in the Facsimile Font Image column of this page to the fonts printed in the Actual Printed Font column. If the Windows support files (PCM) were properly installed into the Hewlett Packard PCL 5e printer driver, the fonts in the two columns should match. If the fonts in both columns do not match (fonts in the Actual Printed Fonts column not printed correctly or missing from this page), review the Windows Support File installation steps in the user documentation. If further assistance is needed, please contact TROY Technical Support 1-800-332-6427, or email techsupport@troygroup.com

| <u>Font Name</u> | <u>Facsimile Font Image</u> | <u>Actual Printed Font</u> |
|------------------|---|---|
| TROY E-13B | 1 2 3 4 5 6 7 8 9 0 | 1 2 3 4 5 6 7 8 9 0 |
| TROY CMC7 | 1 2 3 4 5 6 7 8 9 0 | 1 2 3 4 5 6 7 8 9 0 |
| TROY ECF | 0 1 2 3 4 5 6 7 8 9 0 <small>ZERO ONE TWO THREE FOUR FIVE SIX SEVEN EIGHT NINE ZERO</small> | 0 1 2 3 4 5 6 7 8 9 0 <small>ZERO ONE TWO THREE FOUR FIVE SIX SEVEN EIGHT NINE ZERO</small> |
| TROY LCF | 1 2 3 4 5 6 7 8 9 0 <small>ONE TWO THREE FOUR FIVE SIX SEVEN EIGHT NINE ZERO</small> | 1 2 3 4 5 6 7 8 9 0 <small>ONE TWO THREE FOUR FIVE SIX SEVEN EIGHT NINE ZERO</small> |
| TROY SCF | 1 2 3 4 5 6 7 8 9 0 <small>ONE TWO THREE FOUR FIVE SIX SEVEN EIGHT NINE ZERO</small> | 1 2 3 4 5 6 7 8 9 0 <small>ONE TWO THREE FOUR FIVE SIX SEVEN EIGHT NINE ZERO</small> |
| TROY HELV Rev | 1 2 3 4 5 6 7 8 9 0 | 1 2 3 4 5 6 7 8 9 0 |
| TROY MICRO | MP MP MP | MP MP MP |
| TROY OCRA | 1 2 3 4 5 6 7 8 9 0 A B C D | 1 2 3 4 5 6 7 8 9 0 A B C D |
| TROY OCRB | 1 2 3 4 5 6 7 8 9 0 A B C D | 1 2 3 4 5 6 7 8 9 0 A B C D |
| TROY Security | 1 2 3 4 5 6 7 8 9 0 <small>ONE TWO THREE FOUR FIVE SIX SEVEN EIGHT NINE ZERO</small> | 1 2 3 4 5 6 7 8 9 0 <small>ONE TWO THREE FOUR FIVE SIX SEVEN EIGHT NINE ZERO</small> |

Verifying PCL 5e Communication

The PCL Security/Barcode Font demonstration page can be used to verify PCL 5e communication between the host computer and your printer. If the PCL 5 communication between the host computer and your printer is successful, then the selected demonstration page should print out exactly as shown in the example below.

TO PRINT THE PCL SECURITY/BARCODE FONT DEMONSTRATION PAGE:

1. From the **Main Window**, click on the printer you wish to access.
2. Type in the current administrator password in the password box at the bottom of the **Main Window**. If a password is not set, then leave the password box blank.
3. From the **Main Window**, click on **File, Print**, and then click on **PCL Security/Barcode Font Demo**. The printer will automatically print the PCL 5e Security/Barcode Font Demonstration pages (see example below).

TROY SECURITY FONTS
PCL 5e Font Demo Page (non-Microsoft Windows)

| Font Name | PCL5e Font Call Escape Sequence | Print Example |
|----------------------|--|--|
| TROY E-13 * | <esc>(0Q<esc>(s1p12.0v0s0b0T <esc>(0Q<esc>(s0p8.00h8.8v0s0b0T | 1 2 3 4 5 6 7 8 9 0 ! " # \$ % & ' () * + , - . / : ; < ? [\] ^ _ ` { } ~ |
| TROY CMC7 * | <esc>(0Q<esc>(s1p12.0v0s0b1T <esc>(0Q<esc>(s0p8.00h8.8v0s0b1T | 1234567890 1234567890 |
| TROY ECF * | <esc>(3Q<esc>(s1p<height>v0s0b0T <esc>(3Q<esc>(s1p18v0s0b0T | 1234567890 0 1 2 3 4 5 6 7 8 9 \$ * ! |
| TROY LCF | <esc>(1Q<esc>(s0p5.01h16.0v0s0b0T | 1 2 3 4 5 6 7 8 9 0 \$ € * , |
| TROY SCF | <esc>(2Q<esc>(s0p6.00h22.0v0s0b0T | 1 2 3 4 5 6 7 8 9 0 \$ € * , |
| TROY Micro Font | <esc>(10U<esc>(s0p80h.8v0s33b0T | MP MP MP MP MP MP MP |
| TROY Helvetica (Rev) | <esc>(9U<esc>(s1p<height>v0s33b24580T | 1234567890 ABCDEFGHIJKLMNOPQRSTUVWXYZ |
| TROY OCR-A | <esc>(0O<esc>(s1p<height>v0s0b104T | 1234567890 ABCDEFGHIJKLMNOPQRSTUVWXYZ |
| TROY OCR-B | <esc>(1O<esc>(s1p<height>v0s0b110T | 1234567890 ABCDEFGHIJKLMNOPQRSTUVWXYZ |
| TROY Security | <esc>(4Q<esc>(s1p<height>v0s0b0T | 1234567890 \$ € & , |

Notes

<esc> represents the non-printable escape character (Ascll27/Hex1B).

<height> represents the point-size value of the scalable font. Value is represented in points .1/72 inch increments.

* Multiple PCL5e font calls are shown for some fonts. Refer to the printer documentation to verify which calls your specific model supports.

** These fonts may not be included with your TROY Security Printing Solution. Refer to the printer document for details. If these fonts are not included, alternate printer-resident fonts will be printed in place of them; this is normal. If you would like to add these fonts to your printer-resident font collection, please contact TROY Group, Inc. at 1-800-332-6427.

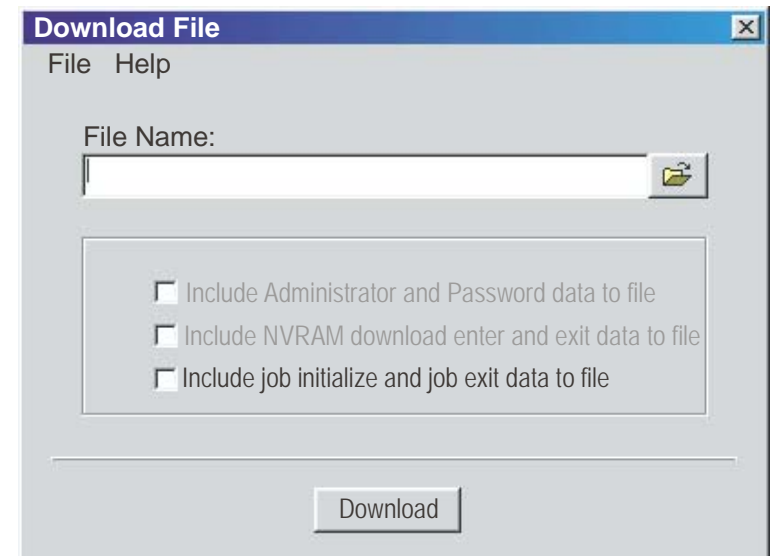


Downloading Files to the Printer

The TROY Printer Utility provides the ability to download any PCL or text file directly to the printer without embedding additional information. A download option is provided to enhance the download file (see the *Download File* window for the specific options). To include the advanced option to the download, place a checkmark next to the option. *The advanced download option is provided for advanced users only.*

TO DOWNLOAD A FILE TO THE PRINTER:

1. From the *Main Window*, click on the printer you wish to manage.
2. From the *Main Window*, click on *File*, and click on *Download File*.
3. Enter the file name or click on *Browse* to locate the desired file.
4. *For advanced users:* Place a checkmark next to the download option if you wish to include the additional data with the download file. *For normal use, it is recommended that the checkbox be left blank.*
5. Click on *Download* to send the file to the printer's memory. Click on *OK* to finish.
6. Click on *OK* to continue.



Obtaining Technical Assistance

The TROY Printer Utility provides several help screens to guide you through the features and functions of your TROY Font Memory Card. TROY technical support is available to assist you with any questions concerning the setup, operation, and maintenance of your TROY Font Memory Card. Specific system information about the configuration of your TROY product is also available through the TROY Printer Utility. You are also encouraged to visit the TROY website for latest FAQs (Frequently Asked Questions), information on the latest TROY products, and for ordering MICR toner and other printing supplies.

TO VIEW TECHNICAL SUPPORT INFORMATION:

From the *Main Window*, click on *Help*, and then click on *Technical Support* to view the TROY Technical Support HTML page for telephone numbers and hours of business.

TO VIEW INFORMATION ON THE TROY WEBSITE:

From the *Main Window*, click on *Help*, and then click on *TROY on the Web* to access the TROY website. Click on the *Support and Downloads* button at the top of the web page to view the available topics. You can access the TROY website directly at <http://www.troygroup.com>.

TO VIEW ON-SCREEN HELP FOR THE TROY PRINTER UTILITY:

From the *Main Window*, click on *Help*, and then click on *TROY Printer Utility Help F1* to view the Printer Utility help documents. You can press the *F1* key at any time while using the TROY Printer Utility to access the help screens.

TO VIEW INFORMATION ABOUT THE PRINTER UTILITY:

From the *Main Window*, click on *Help*, and then click on *About* to view the version level and other information about the TROY Printer Utility.

TO VIEW SYSTEM INFORMATION:

From the *Main Window*, click on *Help*, and then click on *System Information* to view the version level and other information about your computer and printer's hardware and software environment.

Introduction

The TROY MICR E-13B and CMC-7 MICR fonts have been specifically engineered for your TROY Security Printing Solution to ensure the highest quality MICR printing in the industry. The TROY font collection provides seamless integration and security within your Windows-based check printing application. All TROY fonts are permanently programmed into the TROY Font Memory Card to ensure consistent high-quality MICR printing and to prevent unauthorized use of these fonts on another printing system. Your TROY Security Printing Solution includes the following fonts:

- TROY MICR Font (E-13B and CMC-7)
- TROY Security Font (English and Spanish)
- TROY Convenience Fonts (Enhanced, Large, and Small)
- TROY Reverse Helvetica Font
- TROY OCR Fonts (type A and B)
- British Pound and Euro symbols
- TROY POSTNET and Barcode Fonts

Accessing and Using TROY Fonts

The following paragraphs provide some basic information for accessing and using the TROY fonts. It is important that these fonts are kept secure to prevent unauthorized use and that the fonts remain unaltered to ensure accurate rendering by your printer. All TROY fonts are permanently programmed into the TROY Font Memory Card and cannot be directly accessed through the printer control panel or other external means.

Accessing TROY Fonts Using Windows Applications

To access the TROY fonts in a Windows environment, you must first install the Windows printer driver for the model of HP printer being installed. Follow the instructions in *TROY Font Memory Card Kit Quick-Start Guide* (provided on the *TROY Security Printing Solutions* CD) to install the printer driver and Windows support files, enabling you to select these fonts from any Windows-based application. To print the TROY E13-B and CMC-7 MICR fonts, your printer must be set to MICR enabled mode, and a TROY MICR toner cartridge must be installed in the printer. Many commercial MICR check-printing applications are pre-programmed to access the TROY MICR fonts.

Accessing TROY Fonts Using Non-Windows Applications

If you are using a non-Windows application to print MICR documents, the escape sequence for each font must be programmed into your check-printing application in order to “call” each of the selected fonts. The <Esc> character is ASCII character number 27 (hexadecimal number 1B). Refer to the end of this section for each escape sequence (displayed above each character map) used to call each TROY font.

Using TROY MICR Fonts

The E-13B MICR font (TROY E-13B, TROY CMC-7) can be used for printing the MICR line in many countries, including the United States. In some European and Latin American countries, the CMC-7 MICR font is used instead. MICR document processing requires that the MICR characters be precise in size, shape, and spacing. For this reason, the TROY MICR font is supplied as a TrueType font; it must not be altered by scaling or other size manipulation. TROY can provide customer support for your MICR applications only if you use the supplied TROY MICR fonts.

Using the Convenience Amount Fonts

Your TROY Security Printing Solution includes a large, small and enhanced convenience amount font (TROY ECF, TROY LCF, TROY SCF). These fonts consist of numbers with their alphabetic spellings placed directly below the numerical character. These fonts are designed for use in the *Legal Amount* field only (located directly below the *Payee* field). You can enter alphanumeric symbols representing the amount of the check into this field.

Using the TROY Security Fonts

The TROY Security font (TROY SECURITY, TROY SECURITY SPANISH) is designed to prevent fraudulent alteration to the *Amount* field on the check. The font consists of numbers with their alphabetic spellings placed directly below the numerical character with a wavy lined pattern running through each character. These fonts are designed for use in the *Legal Amount* field only (located directly below the *Payee* field on the check). You can enter numeric symbols representing the amount of the check into this field. During document processing, convenience amounts may be visually read and encoded on the check by bank personnel. In this case, a large *Security Amount* font may best meet your bank's requirements.

Using the TROY OCR Fonts

The TROY OCR fonts (TROY OCR-A AND TROY OCR-B) are used to print any information (names, addresses, amounts) on the check that is to be read by automated readers using optical character recognition.

Using the Reverse Helvetica Font

The TROY Reverse Helvetica font is used to print names and addresses on the back of transparent envelope windows for use in pressure-seal machines.

Using the TROY POSTNET Font

The POSTNET (Postal Numeric Encoding Technique) font (TROY POSTNET) is used to represent the nine-digit postal zip code below the postal address line. Using the POSTNET font on your mailing envelopes and postcards will significantly decrease postal processing time and reduce the chance of errors when manual data entry is required at the post office.

Using the British Pound and Euro Symbols

The British Pound and European currency symbols are used in place of the U.S. dollar sign for the respective European country and can be selected to print in the audit reports.

Using Printer Fonts and Screen Fonts

In addition to the TROY *printer* fonts that are permanently programmed into the TROY Font Memory Card, the TROY *screen* fonts have been developed for screen display use only as a visual reference and for making positional adjustments to the MICR line. The TROY *screen* fonts display differently than the actual *printer* fonts in order to prevent unauthorized printing using the MICR *screen* fonts on other Windows-installed printers.

If the E-13B MICR *screen* font is used for printing, the inversely printed (white characters on a black background) MICR *screen* font will not be readable by the bank reader/sorter machines. The uniquely displayed *screen* fonts ensure that the MICR font printed on your MICR documents is generated by the TROY Font Memory Card and not by the Windows operating system using the resident TrueType™ font. The TROY *screen* fonts are provided on the **TROY Security Printing Solutions** CD supplied with your TROY Font Memory Card product.

| | |
|-------------------------------------|----------------------------|
| TROY E-13B Screen Font: | |
| TROY CMC-7 Screen Font: | |
| TROY LCF Screen Font: | |
| TROY SCF Screen Font: | |
| TROY ECF Screen Font: | |
| TROY Security Screen Font: | |
| TROY Messaging Screen Font: | <i>A Message For You</i> |
| TROY AutoProtect Screen Font: | VOID VOID VOID |
| TROY OCR-A Screen Font: | ABCDEFGHIJKLMNOPQRSTUVWXYZ |
| TROY OCR-B Screen Font: | ABCDEFGHIJKLMNOPQRSTUVWXYZ |
| TROY Reverse Helvetica Screen Font: | |
| TROY Microprint Screen Font: | ----- |
| TROY Code 128 Screen Font: | |
| TROY Code 2 of 5 Screen Font: | |
| TROY Code 3 of 9 Screen Font: | |
| TROY EAN-8 Screen Font: | |
| TROY EAN-13 Screen Font: | |
| TROY POSTNET Screen Font: | |
| TROY Reverse POSTNET Screen Font: | |
| TROY UPC-A Screen Font: | |
| TROY UPC-E Screen Font: | |

MICR Font Guidelines

The TROY E-13B and CMC-7 MICR fonts were developed using strict specifications designed specifically for high-speed magnetic-read processing. To maintain these strict specifications, the TROY MICR fonts were designed as non-scalable fonts (fixed fonts) that are fixed in pitch (spacing) and point size (height). Because Windows TrueType™ technology allows fonts to be scalable by changing the point size, it is imperative to maintain the 12-point size of the MICR fonts installed in Windows. Selecting a point size other than 12-point for the MICR font in Windows will not visibly enlarge or reduce the size of the characters; however, the horizontal spacing will be affected. Any alteration to the spacing of the characters will result in incorrect placement of the MICR characters in the MICR line at the bottom of your checks, causing your financial documents to be rejected by the bank.

The Convenience Amount fonts were also designed as non-scalable fonts, but can be changed (increased or decreased) from the default point size to meet your check printing requirements. Changing the point size of a fixed font in Windows will only affect the horizontal spacing of the characters and not affect the vertical size of the characters. The TROY Enhanced Convenience Amount font and TROY Security font were designed as scalable fonts that can be changed (increased or decreased) from the default point size to meet your check printing requirements.

NOTE: It is highly recommended that you verify the MICR line at the bottom of your printed checks using the TROY MICR Document Template (p/n 54-17373-001) to verify the positioning of each character. Refer to the TROY MICR Basics Handbook for details (provided on the *TROY Security Printing Solutions* CD supplied with your TROY Font Memory Card product).

Font Character Mapping

Each character or symbol in a font set corresponds to a specific ASCII (American Standard Code for Information Interchange) number (e.g., the capital letter “A” = ASCII number 65). Pressing a key on your computer keyboard automatically generates the ASCII number (32 through 127) associated with the character or symbol displayed on the key. Likewise, any character or symbol not represented on your computer keyboard (ASCII numbers above 127) can be accessed by manually entering the associated ASCII number using the numeric keypad.

The fonts provided on the *TROY Security Printing Solutions* CD have each of the characters and symbols in each font set (shown on the following pages) “mapped” (associated) to standard computer keyboard characters using the corresponding ASCII number for each character and symbol on the keyboard.

For example, the transit symbol (one of the industry-standard symbols used in a MICR line at the bottom of a check) contained in the TROY E-13B MICR character table (shown on page 9) does not exist on a standard computer keyboard but has been “mapped” to the standard ASCII keyboard capital letter “A”, designated as ASCII number 65.

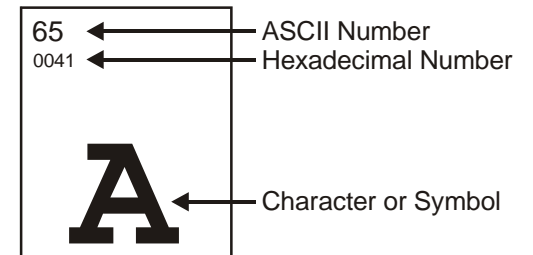
Therefore, after loading and then selecting the TROY E-13B MICR Font, typing the capital letter “A” on your computer keyboard will produce the MICR transit symbol instead of the capital letter “A”. The TROY E-13B character table (shown on page 9) associates the transit symbol with ASCII number 65 (the same ASCII number used for the capital letter “A” if you had selected a standard ASCII font set instead of the TROY E-13B MICR font set).

Determining a Character Mapping

Accessing Unmapped Characters

To determine which key on your computer keyboard that a TROY character or symbol is “mapped” to, simply compare the ASCII number of the selected TROY character or symbol to the same ASCII number listed in the *Standard ASCII Character Map* (shown on the next page) to determine which keyboard key can be used to access the selected TROY character or symbol.

Some of the font sets provided on the *TROY Security Printing Solutions* CD contain more characters or symbols than can be “mapped” to the available keys on a standard computer keyboard. In this case, these characters can be accessed by manually entering the ASCII number (see example at right) designated for each character (refer to the character tables on the following pages). The hexadecimal number shown below the ASCII number is used for programming mainframe computers.



To access a character or symbol that is not “mapped” to one of the keys on your Windows computer keyboard, you can manually enter the ASCII number by holding down the **ALT** key on your keyboard, entering the associated ASCII number for the character you wish to access, and then releasing the **ALT** key.

NOTE: You must use the numerical keypad on your keyboard to enter the ASCII number. The number keys along the top of the keyboard will not work for this application.

Section 3

Using TROY Fonts

Standard ASCII
Character Set
(reference only)

| | | | | | | | | | | | |
|-------------|-------------|-------------|-------------|-------------|-------------|-------------|-------------|-------------|-------------|-------------|-------------|
| 24 | 25 | 26 | 27 | 28 | 29 | 30 | 31 | 32 0020 | 33 0021 | 34 0022 | 35 0023 |
| | | | | | | | | | ! | " | # |
| 36 0024 | 37 0025 | 38 0026 | 39 0027 | 40 0028 | 41 0029 | 42 002A | 43 002B | 44 002C | 45 002D | 46 002E | 47 002F |
| \$ | % | & | ' | (|) | * | + | , | - | . | / |
| 48 0030 | 49 0031 | 50 0032 | 51 0033 | 52 0034 | 53 0035 | 54 0036 | 55 0037 | 56 0038 | 57 0039 | 58 003A | 59 003B |
| 0 | 1 | 2 | 3 | 4 | 5 | 6 | 7 | 8 | 9 | : | ; |
| 60 003C | 61 003D | 62 003E | 63 003F | 64 0040 | 65 0041 | 66 0042 | 67 0043 | 68 0044 | 69 0045 | 70 0046 | 71 0047 |
| < | = | > | ? | @ | A | B | C | D | E | F | G |
| 72 0048 | 73 0049 | 74 004A | 75 004B | 76 004C | 77 004D | 78 004E | 79 004F | 80 0050 | 81 0051 | 82 0052 | 83 0053 |
| H | I | J | K | L | M | N | O | P | Q | R | S |
| 84 0054 | 85 0055 | 86 0056 | 87 0057 | 88 0058 | 89 0059 | 90 005A | 91 005B | 92 005C | 93 005D | 94 005E | 95 005F |
| T | U | V | W | X | Y | Z | [| \ |] | ^ | _ |
| 96 0060 | 97 0061 | 98 0062 | 99 0063 | 100 0064 | 101 0065 | 102 0066 | 103 0067 | 104 0068 | 105 0069 | 106 006A | 107 006B |
| ` | a | b | c | d | e | f | g | h | i | j | k |
| 108 006C | 109 006D | 110 006E | 111 006F | 112 0070 | 113 0071 | 114 0072 | 115 0073 | 116 0074 | 117 0075 | 118 0076 | 119 0077 |
| l | m | n | o | p | q | r | s | t | u | v | w |
| 120 0078 | 121 0079 | 122 007A | 123 007B | 124 007C | 125 007D | 126 007E | 127 | 128 | 129 | 130 | 131 |
| x | y | z | { | | } | ~ | | | | | |



Section 3

Using TROY Fonts

TROY MICR E-13B 12-Point Font (Troy E-13B)

<Esc> (ØQ<Esc> (slp12vøsbøT

| | | | | | | | | | | | |
|------------|------------|------------|-------------|------------|------------|------------|------------|-------------|------------|------------|------------|
| 24 | 25 | 26 | 27 | 28 | 29 | 30 | 31 | 32 F020 | 33 | 34 | 35 |
| 36 F024 | 37 | 38 F026 | 39 | 40 | 41 | 42 | 43 | 44 ; | 45 F02D | 46 | 47 F02F |
| 48 F030 | 49 F031 | 50 F032 | 51 F033 | 52 F034 | 53 F035 | 54 F036 | 55 F037 | 56 F038 | 57 F039 | 58 F03A | 59 F03B |
| 60 | 61 F03D | 62 | 63 | 64 | 65 F041 | 66 F042 | 67 F043 | 68 F044 | 69 | 70 | 71 |
| 72 | 73 | 74 | 75 | 76 | 77 | 78 | 79 F04F | 80 | 81 | 82 | 83 |
| 84 F054 | 85 | 86 | 87 | 88 | 89 | 90 | 91 | 92 | 93 | 94 | 95 |
| 96 | 97 | 98 | 99 | 100 | 101 | 102 | 103 | 104 | 105 | 106 | 107 |
| 108 | 109 | 110 | 111 F06F | 112 | 113 | 114 | 115 | 116 F074 | 117 | 118 | 119 |



Section 3

Using TROY Fonts

**TROY MICR
CMC-7 12-Point
Font
(Troy CMC7)**

<Esc>(ØQ<Esc>(slp12vØsØb1T

| | | | | | | | | | | | |
|------------|------------|------------|------------|------------|------------|------------|------------|-----------------|------------|----|----|
| 24 | 25 | 26 | 27 | 28 | 29 | 30 | 31 | 32 F020 : | 33 | 34 | 35 |
| 36 | 37 | 38 | 39 | 40 | 41 | 42 | 43 | 44 | 45 | 46 | 47 |
| 48 F030 | 49 F031 | 50 F032 | 51 F033 | 52 F034 | 53 F035 | 54 F036 | 55 F037 | 56 F038 | 57 F039 | 58 | 59 |
| 60 | 61 | 62 | 63 | 64 | 65 F041 | 66 F042 | 67 F043 | 68 F044 | 69 F045 | 70 | 71 |

**TROY Enhanced
Convenience
Amount Font
(Troy ECF)**

<Esc>(3Q<Esc>(slp□vØsØb1ØT □ = desired point size

| | | | | | | | | | | | |
|-------------------------|------------------------|------------------------|--------------------------|-------------------------|-------------------------|------------------------|--------------------------|--------------------------|-------------------------|------------------------|------------------------|
| 24 | 25 | 26 | 27 | 28 | 29 | 30 | 31 | 32 F020 . | 33 | 34 | 35 |
| 36 F024 \$ | 37 | 38 | 39 | 40 | 41 | 42 F02A * | 43 | 44 F02C , | 45 | 46 F02E . | 47 |
| 48 F030 0 ZERO | 49 F031 1 ONE | 50 F032 2 TWO | 51 F033 3 THREE | 52 F034 4 FOUR | 53 F035 5 FIVE | 54 F036 6 SIX | 55 F037 7 SEVEN | 56 F038 8 EIGHT | 57 F039 9 NINE | 58 | 59 |
| 60 | 61 | 62 | 63 | 64 | 65 F041 0 CTS | 66 F042 1 CTS | 67 F043 2 CTS | 68 F044 3 CTS | 69 F045 4 CTS | 70 F046 5 CTS | 71 F047 6 CTS |
| 72 F048 7 CTS | 73 F049 8 CTS | 74 F04A 9 CTS | 75 | 76 | 77 | 78 | 79 | 80 | 81 | 82 | 83 |



NOTE: The TROY Enhanced Convenience Amount font can be used in place of the TROY Convenience Amount font in the legal amount field of the check. To write the cents amount on the check, type the capital letter that corresponds to the smaller cent characters shown in the example above (i.e., A=0, B=1, C=2).

TROY Large Convenience Amount 18-Point Font (Troy LCF)

<Esc> (1Q<Esc> (s0p5.0h16.0v0s0b0T

| Key | Char | Key | Char | Key | Char | Key | Char |
|-----|------------|-----|------------|-----|--------------|-----|-----------|
| 0 | 0 ZERO | 5 | 5 FIVE | \$ | \$ DOLLAR | % | € EURO |
| 1 | 1 ONE | 6 | 6 SIX | * | * ASK | & | € |
| 2 | 2 TWO | 7 | 7 SEVEN | , | , COM | C | ¢ CENT |
| 3 | 3 THREE | 8 | 8 EIGHT | . | . PER | | |
| 4 | 4 FOUR | 9 | 9 NINE | | | | |

TROY Small Convenience Amount 24-Point Font (Troy SCF)

<Esc> (2Q<Esc> (s0p6.00h22.0v0s0b0T

| Key | Char | Key | Char | Key | Char | Key | Char |
|-----|------------|-----|------------|-----|--------------|-----|-----------|
| 0 | 0 ZERO | 5 | 5 FIVE | \$ | \$ DOLLAR | % | € EURO |
| 1 | 1 ONE | 6 | 6 SIX | * | * ASK | & | € |
| 2 | 2 TWO | 7 | 7 SEVEN | , | , COM | | |
| 3 | 3 THREE | 8 | 8 EIGHT | . | . PER | | |
| 4 | 4 FOUR | 9 | 9 NINE | | | | |



Section 3

Using TROY Fonts

TROY Security Font (Troy Security)

<Esc>(4Q<Esc>(slp□vøsbøT □ = desired point size

| | | | | | | | | | | | |
|--------------|------------|------------|------------|------------|------------|------------|------------|------------|------------|------------|------------|
| 24 | 25 | 26 | 27 | 28 | 29 | 30 | 31 | 32 F020 | 33 | 34 | 35 F023 |
| | | | | | | | | | | | ø CENT |
| 36 F024 | 37 F025 | 38 F026 | 39 | 40 | 41 | 42 F02A | 43 | 44 F02C | 45 | 46 F02E | 47 F02F |
| \$ DOLLAR | € EURO | & AMP | | | | * AST | | ç CCH | | ø PER | ø BLANK |
| 48 F030 | 49 F031 | 50 F032 | 51 F033 | 52 F034 | 53 F035 | 54 F036 | 55 F037 | 56 F038 | 57 F039 | 58 | 59 |
| 0 ZERO | 1 ONE | 2 TWO | 3 THREE | 4 FOUR | 5 FIVE | 6 SIX | 7 SEVEN | 8 EIGHT | 9 NINE | | |

TROY Security Font (Spanish) (Troy Security Spanish)

<Esc>(4Q<Esc>(slp□vøsb4T □ = desired point size

| | | | | | | | | | | | |
|--------------|------------|------------|------------|-------------|------------|------------|------------|------------|------------|------------|------------|
| 24 | 25 | 26 | 27 | 28 | 29 | 30 | 31 | 32 F020 | 33 | 34 | 35 F023 |
| | | | | | | | | | | | ø CENT |
| 36 F024 | 37 F025 | 38 F026 | 39 | 40 | 41 | 42 F02A | 43 | 44 F02C | 45 | 46 F02E | 47 F02F |
| \$ DOLLAR | € EURO | & Y | | | | * AST | | ç COMA | | ø PUNTO | ø LIBRE |
| 48 F030 | 49 F031 | 50 F032 | 51 F033 | 52 F034 | 53 F035 | 54 F036 | 55 F037 | 56 F038 | 57 F039 | 58 | 59 |
| 0 CERO | 1 UNO | 2 DOS | 3 TRES | 4 CUATRO | 5 CINCO | 6 SEIS | 7 SETE | 8 OCHO | 9 NUEVE | | |

NOTE: The TROY Security Spanish Font is included in the International Font Collection provided on the TROY Security Printing Solutions CD.

Section 3

Using TROY Fonts

**TROY Reverse
Helvetica Font
(Troy Helvetica
(Rev))**

| | | | | | | | | | | | | | | | | | | | |
|-----|----|-----|----|-----|----|-----|----|-----|----|-----|----|-----|----|-----|----|-----|----|-----|----|
| 32 | 20 | 33 | 21 | 34 | 22 | 35 | 23 | 36 | 24 | 37 | 25 | 38 | 26 | 39 | 27 | 40 | 28 | 41 | 29 |
| | | ı | „ | # | ¿ | º | ø | ı | (|) | | | | | | | | | |
| 42 | 2A | 43 | 2B | 44 | 2C | 45 | 2D | 46 | 2E | 47 | 2F | 48 | 30 | 49 | 31 | 50 | 32 | 51 | 33 |
| * | + | ` | - | · | | 0 | ↓ | ∑ | 3 | | | | | | | | | | |
| 52 | 34 | 53 | 35 | 54 | 36 | 55 | 37 | 56 | 38 | 57 | 39 | 58 | 3A | 59 | 3B | 60 | 3C | 61 | 3D |
| † | ρ | ε | ∫ | 8 | ∂ | : | ! | < | = | | | | | | | | | | |
| 62 | 3E | 63 | 3F | 64 | 40 | 65 | 41 | 66 | 42 | 67 | 43 | 68 | 44 | 69 | 45 | 70 | 46 | 71 | 47 |
| > | ı | @ | ∇ | B | C | D | E | F | E | | | | | | | | | | |
| 72 | 48 | 73 | 49 | 74 | 4A | 75 | 4B | 76 | 4C | 77 | 4D | 78 | 4E | 79 | 4F | 80 | 50 | 81 | 51 |
| H | I | ∫ | K | Γ | W | И | O | Ь | σ | | | | | | | | | | |
| 82 | 52 | 83 | 53 | 84 | 54 | 85 | 55 | 86 | 56 | 87 | 57 | 88 | 58 | 89 | 59 | 90 | 5A | 91 | 5B |
| B | ε | ∫ | ∩ | ∧ | M | X | ∧ | Σ | ∫ | | | | | | | | | | |
| 92 | 5C | 93 | 5D | 94 | 5E | 95 | 5F | 96 | 60 | 97 | 61 | 98 | 62 | 99 | 63 | 100 | 64 | 101 | 65 |
| / | ∫ | ∫ | - | , | g | p | c | q | ε | | | | | | | | | | |
| 102 | 66 | 103 | 67 | 104 | 68 | 105 | 69 | 106 | 6A | 107 | 6B | 108 | 6C | 109 | 6D | 110 | 6E | 111 | 6F |
| ‡ | ∂ | μ | ! | ! | κ | ∫ | ω | υ | ο | | | | | | | | | | |
| 112 | 70 | 113 | 71 | 114 | 72 | 115 | 73 | 116 | 74 | 117 | 75 | 118 | 76 | 119 | 77 | 120 | 78 | 121 | 79 |
| b | d | ∫ | ε | ‡ | ∩ | ∧ | M | x | ∧ | | | | | | | | | | |
| 122 | 7A | 123 | 7B | 124 | 7C | 125 | 7D | 126 | 7E | 127 | 7F | 128 | 80 | 129 | 81 | 130 | 82 | 131 | 83 |
| ∑ | { | | } | ~ | □ | □ | □ | □ | □ | | | | | | | | | | |



Section 3

Using TROY Fonts

TROY OCR-A (Troy OCR-A)

<Esc>(Ø0<Esc>(slp□vøsløblø4T □ = desired point size

| | | | | | | | | | | | |
|-------------|-------------|-------------|-------------|-------------|-------------|-------------|-------------|-------------|-------------|-------------|-------------|
| 24 | 25 | 26 | 27 | 28 | 29 | 30 | 31 | 32 0020 | 33 0021 | 34 0022 | 35 0023 |
| | | | | | | | | | ! | ∩ | # |
| 36 0024 | 37 0025 | 38 0026 | 39 0027 | 40 0028 | 41 0029 | 42 002A | 43 002B | 44 002C | 45 002D | 46 002E | 47 002F |
| ¢ | % | & | ' | (|) | * | + | ∩ | - | . | / |
| 48 0030 | 49 0031 | 50 0032 | 51 0033 | 52 0034 | 53 0035 | 54 0036 | 55 0037 | 56 0038 | 57 0039 | 58 003A | 59 003B |
| 0 | 1 | 2 | 3 | 4 | 5 | 6 | 7 | 8 | 9 | : | ; |
| 60 003C | 61 003D | 62 003E | 63 003F | 64 0040 | 65 0041 | 66 0042 | 67 0043 | 68 0044 | 69 0045 | 70 0046 | 71 0047 |
| < | = | > | ? | @ | A | B | C | D | E | F | G |
| 72 0048 | 73 0049 | 74 004A | 75 004B | 76 004C | 77 004D | 78 004E | 79 004F | 80 0050 | 81 0051 | 82 0052 | 83 0053 |
| H | I | J | K | L | M | N | O | P | Q | R | S |
| 84 0054 | 85 0055 | 86 0056 | 87 0057 | 88 0058 | 89 0059 | 90 005A | 91 005B | 92 005C | 93 005D | 94 005E | 95 005F |
| T | U | V | W | X | Y | Z | [| \ |] | ^ | Ƴ |
| 96 0060 | 97 0061 | 98 0062 | 99 0063 | 100 0064 | 101 0065 | 102 0066 | 103 0067 | 104 0068 | 105 0069 | 106 006A | 107 006B |
| h | a | b | c | d | e | f | g | h | i | j | k |
| 108 006C | 109 006D | 110 006E | 111 006F | 112 0070 | 113 0071 | 114 0072 | 115 0073 | 116 0074 | 117 0075 | 118 0076 | 119 0077 |
| l | m | n | o | p | q | r | s | t | u | v | w |
| 120 0078 | 121 0079 | 122 007A | 123 007B | 124 007C | 125 007D | 126 007E | 127 007F | 128 20AC | 129 | 130 | 131 |
| x | y | z | { | | } | Ɔ | ■ | □ | | | |
| 132 | 133 | 134 | 135 | 136 | 137 | 138 | 139 2039 | 140 | 141 | 142 | 143 |
| | | | | | | | < | | | | |
| 144 | 145 2018 | 146 2019 | 147 201C | 148 201D | 149 | 150 2013 | 151 2014 | 152 | 153 | 154 | 155 203A |
| | ∩ | ∩ | ∩ | ∩ | | - | — | | | | > |



Section 3

Using TROY Fonts

TROY OCR-A (continued)

| | | | | | | | | | | | |
|-------------|-----|-----|-------------|-------------|-------------|-------------|-------------|-----|-------------|-------------|-------------|
| 156 | 157 | 158 | 159 | 160 00A0 | 161 | 162 00A2 | 163 00A3 | 164 | 165 00A5 | 166 | 167 |
| | | | | | | € | £ | . | ¥ | | |
| 168 | 169 | 170 | 171 | 172 | 173 | 174 | 175 | 176 | 177 | 178 | 179 |
| | | | | | | | | | | | |
| 180 | 181 | 182 | 183 00B7 | 184 00B8 | 185 | 186 | 187 | 188 | 189 | 190 | 191 00BF |
| | | | ▪ | ┐ | | | | | | | ? |
| 192 | 193 | 194 | 195 | 196 00C4 | 197 00C5 | 198 00C8 | 199 | 200 | 201 | 202 | 203 |
| | | | | À | Ā | Æ | | | | | |
| 204 | 205 | 206 | 207 | 208 | 209 00D1 | 210 | 211 | 212 | 213 | 214 00D6 | 215 |
| | | | | | Ñ | | | | | Ö | |
| 216 00D8 | 217 | 218 | 219 | 220 00DC | 221 | 222 | 223 | 224 | 225 | 226 | 227 |
| Ø | | | | Ü | | | | | | | |

NOTE: This OCR font must be used at the designated point size to ensure optical readability.

- Size I – must use 12-point size (upper and lower case characters can be used)
- Size III – must use 16-point size (only upper case characters can be used)
- Size IV – must use 20-point size (only upper case characters can be used)

Section 3

Using TROY Fonts

TROY OCR-B (Troy OCR-B)

<Esc>(10<Esc>(slp□vøsb110T □ = desired point size

| | | | | | | | | | | | |
|-------------|-------------------|--------------------|-------------------|-------------------|------------------|------------------|------------------|------------------|------------------|------------------|------------------|
| 24 | 25 | 26 | 27 | 28 | 29 | 30 | 31 | 32 0020 | 33 0021 ! | 34 0022 " | 35 0023 # |
| 36 0024 | 37 0025 \$ | 38 0026 % | 39 0027 & | 40 0028 ' | 41 0029 (| 42 002A) | 43 002B * | 44 002C + | 45 002D / | 46 002E - | 47 002F . |
| 48 0030 | 49 0031 0 | 50 0032 1 | 51 0033 2 | 52 0034 3 | 53 0035 4 | 54 0036 5 | 55 0037 6 | 56 0038 7 | 57 0039 8 | 58 003A 9 | 59 003B : |
| 60 003C | 61 003D < | 62 003E = | 63 003F > | 64 0040 ? | 65 0041 @ | 66 0042 A | 67 0043 B | 68 0044 C | 69 0045 D | 70 0046 E | 71 0047 F |
| 72 0048 | 73 0049 H | 74 004A I | 75 004B J | 76 004C K | 77 004D L | 78 004E M | 79 004F N | 80 0050 O | 81 0051 P | 82 0052 Q | 83 0053 R |
| 84 0054 | 85 0055 T | 86 0056 U | 87 0057 V | 88 0058 W | 89 0059 X | 90 005A Y | 91 005B Z | 92 005C [| 93 005D \ | 94 005E] | 95 005F ^ |
| 96 0060 | 97 0061 ' | 98 0062 a | 99 0063 b | 100 0064 c | 101 0065 d | 102 0066 e | 103 0067 f | 104 0068 g | 105 0069 h | 106 006A i | 107 006B j |
| 108 006C | 109 006D k | 110 006E l | 111 006F m | 112 0070 n | 113 0071 o | 114 0072 p | 115 0073 q | 116 0074 r | 117 0075 s | 118 0076 t | 119 0077 u |
| 120 0078 | 121 0079 v | 122 007A w | 123 007B x | 124 007C y | 125 007D z | 126 007E { | 127 007F | 128 ~ | 129 ■ | 130 201A / | 131 |
| 132 201E | 133 2026 // | 134 2020 ... | 135 2021 † | 136 02C6 ‡ | 137 2030 ^ | 138 0160 % | 139 2039 š | 140 0152 < | 141 € | 142 017D ž | 143 |
| 144 | 145 2018 / | 146 2019 / | 147 201C // | 148 201D // | 149 2022 . | 150 2013 - | 151 2014 - | 152 02DC ~ | 153 2122 m | 154 0161 š | 155 203A > |



Section 3

Using TROY Fonts

TROY OCR-B (continued)

| | | | | | | | | | | | |
|-------------|-------------|-------------|-------------|-------------|-------------|-------------|-------------|-------------|-------------|-------------|-------------|
| 156 0153 | 157 | 158 017E | 159 0178 | 160 00A0 | 161 00A1 | 162 00A2 | 163 00A3 | 164 00A4 | 165 00A5 | 166 00A6 | 167 00A7 |
| æ | | ž | ÿ | | i | € | £ | ¤ | ¥ | ¦ | § |
| 168 00A8 | 169 | 170 00AA | 171 00AB | 172 00AC | 173 00AD | 174 | 175 00AF | 176 00B0 | 177 00B1 | 178 | 179 |
| ¨ | | á | « | — | – | | – | ¡ | ± | | |
| 180 00B4 | 181 00B5 | 182 | 183 00B7 | 184 00B8 | 185 | 186 00BA | 187 00BB | 188 | 189 | 190 | 191 00BF |
| ´ | µ | | • | , | | ij | » | | | | ¿ |
| 192 00C0 | 193 00C1 | 194 00C2 | 195 00C3 | 196 00C4 | 197 00C5 | 198 00C6 | 199 00C7 | 200 00C8 | 201 00C9 | 202 00CA | 203 00CB |
| À | Á | Â | Ã | Ä | Å | Æ | Ç | È | É | Ê | Ë |
| 204 00CC | 205 00CD | 206 00CE | 207 00CF | 208 00D0 | 209 00D1 | 210 00D2 | 211 00D3 | 212 00D4 | 213 00D5 | 214 00D6 | 215 00D7 |
| Ì | Í | Î | Ï | Ð | Ñ | Ò | Ó | Ô | Õ | Ö | × |
| 216 00D8 | 217 00D9 | 218 00DA | 219 00DB | 220 00DC | 221 00DD | 222 00DE | 223 00DF | 224 00E0 | 225 00E1 | 226 00E2 | 227 00E3 |
| Ø | Ù | Ú | Û | Ü | Ý | Þ | ß | à | á | â | ã |
| 228 00E4 | 229 00E5 | 230 00E6 | 231 00E7 | 232 00E8 | 233 00E9 | 234 00EA | 235 00EB | 236 00EC | 237 00ED | 238 00EE | 239 00EF |
| ä | å | æ | ç | è | é | ê | ë | ì | í | î | ï |
| 240 00F0 | 241 00F1 | 242 00F2 | 243 00F3 | 244 00F4 | 245 00F5 | 246 00F6 | 247 00F7 | 248 00F8 | 249 00F9 | 250 00FA | 251 00FB |
| ð | ñ | ò | ó | ô | õ | ö | ÷ | ø | ù | ú | û |
| 252 00FC | 253 00FD | 254 00FE | 255 00FF | 256 E000 | 257 E001 | 258 E002 | | | | | |
| ü | ý | þ | ÿ | | | | | | | | |

NOTE: This OCR font must be used at the designated point size to ensure optical readability.

- Size I – must use 10-point size (upper and lower case characters can be used)
- Size III – (not supported)
- Size IV – must use 16-point size (upper and lower case characters can be used)

Section 3

Using TROY Fonts

TROY UPC-A Barcode

<Esc>(8Y<Esc>(slp□vøsob246øøT □ = desired height

| | | | | | | | | | |
|--------|--------|--------|--------|--------|--------|--------|--------|--------|--------|
| 32 20 | 33 21 | 34 22 | 35 23 | 36 24 | 37 25 | 38 26 | 39 27 | 40 28 | 41 29 |
| 42 2A | 43 2B | 44 2C | 45 2D | 46 2E | 47 2F | 48 30 | 49 31 | 50 32 | 51 33 |
| 52 34 | 53 35 | 54 36 | 55 37 | 56 38 | 57 39 | 58 3A | 59 3B | 60 3C | 61 3D |
| 62 3E | 63 3F | 64 40 | 65 41 | 66 42 | 67 43 | 68 44 | 69 45 | 70 46 | 71 47 |
| 72 48 | 73 49 | 74 4A | 75 4B | 76 4C | 77 4D | 78 4E | 79 4F | 80 50 | 81 51 |
| 82 52 | 83 53 | 84 54 | 85 55 | 86 56 | 87 57 | 88 58 | 89 59 | 90 5A | 91 5B |
| 92 5C | 93 5D | 94 5E | 95 5F | 96 60 | 97 61 | 98 62 | 99 63 | 100 64 | 101 65 |
| 102 66 | 103 67 | 104 68 | 105 69 | 106 6A | 107 6B | 108 6C | 109 6D | 110 6E | 111 6F |
| 112 70 | 113 71 | 114 72 | 115 73 | 116 74 | 117 75 | 118 76 | 119 77 | 120 78 | 121 79 |
| 122 7A | 123 7B | 124 7C | 125 7D | 126 7E | 127 7F | 128 80 | 129 81 | 130 82 | 131 83 |
| 132 84 | 133 85 | 134 86 | 135 87 | 136 88 | 137 89 | 138 8A | 139 8B | 140 8C | 141 8D |
| 142 8E | 143 8F | 144 90 | 145 91 | 146 92 | 147 93 | 148 94 | 149 95 | 150 96 | 151 97 |
| 152 98 | 153 99 | 154 9A | 155 9B | 156 9C | 157 9D | 158 9E | 159 9F | 160 A0 | 161 A1 |
| 162 A2 | 163 A3 | 164 A4 | 165 A5 | 166 A6 | 167 A7 | 168 A8 | 169 A9 | 170 AA | 171 AB |
| 172 AC | 173 AD | 174 AE | 175 AF | 176 B0 | 177 B1 | 178 B2 | 179 B3 | 180 B4 | 181 B5 |
| 182 B6 | 183 B7 | 184 B8 | 185 B9 | 186 BA | 187 BB | 188 BC | 189 BD | 190 BE | 191 BF |



Section 3

Using TROY Fonts

TROY UPC-E Barcode

<Esc>(8Y<Esc>(slp□vøsb246lØT □ = desired height

| | | | | | | | | | |
|--------|--------|--------|--------|--------|--------|--------|--------|--------|--------|
| 32 20 | 33 21 | 34 22 | 35 23 | 36 24 | 37 25 | 38 26 | 39 27 | 40 28 | 41 29 |
| 42 2A | 43 2B | 44 2C | 45 2D | 46 2E | 47 2F | 48 30 | 49 31 | 50 32 | 51 33 |
| 52 34 | 53 35 | 54 36 | 55 37 | 56 38 | 57 39 | 58 3A | 59 3B | 60 3C | 61 3D |
| 62 3E | 63 3F | 64 40 | 65 41 | 66 42 | 67 43 | 68 44 | 69 45 | 70 46 | 71 47 |
| 72 48 | 73 49 | 74 4A | 75 4B | 76 4C | 77 4D | 78 4E | 79 4F | 80 50 | 81 51 |
| 82 52 | 83 53 | 84 54 | 85 55 | 86 56 | 87 57 | 88 58 | 89 59 | 90 5A | 91 5B |
| 92 5C | 93 5D | 94 5E | 95 5F | 96 60 | 97 61 | 98 62 | 99 63 | 100 64 | 101 65 |
| 102 66 | 103 67 | 104 68 | 105 69 | 106 6A | 107 6B | 108 6C | 109 6D | 110 6E | 111 6F |
| 112 70 | 113 71 | 114 72 | 115 73 | 116 74 | 117 75 | 118 76 | 119 77 | 120 78 | 121 79 |
| 122 7A | 123 7B | 124 7C | 125 7D | 126 7E | 127 7F | 128 80 | 129 81 | 130 82 | 131 83 |
| 132 84 | 133 85 | 134 86 | 135 87 | 136 88 | 137 89 | 138 8A | 139 8B | 140 8C | 141 8D |
| 142 8E | 143 8F | 144 90 | 145 91 | 146 92 | 147 93 | 148 94 | 149 95 | 150 96 | 151 97 |
| 152 98 | 153 99 | 154 9A | 155 9B | 156 9C | 157 9D | 158 9E | 159 9F | 160 A0 | 161 A1 |
| 162 A2 | 163 A3 | 164 A4 | 165 A5 | 166 A6 | 167 A7 | 168 A8 | 169 A9 | 170 AA | 171 AB |
| 172 AC | 173 AD | 174 AE | 175 AF | 176 B0 | 177 B1 | 178 B2 | 179 B3 | 180 B4 | 181 B5 |
| 182 B6 | 183 B7 | 184 B8 | 185 B9 | 186 BA | 187 BB | 188 BC | 189 BD | 190 BE | 191 BF |



Section 3

Using TROY Fonts

TROY EAN-8 Barcode

<Esc>(8Y<Esc>(slp□v0s0b24620T □ = desired height

| | | | | | | | | | | | | | | | | | | | |
|-----|----|-----|----|-----|----|-----|----|-----|----|-----|----|-----|----|-----|----|-----|----|-----|----|
| 32 | 20 | 33 | 21 | 34 | 22 | 35 | 23 | 36 | 24 | 37 | 25 | 38 | 26 | 39 | 27 | 40 | 28 | 41 | 29 |
| 42 | 2A | 43 | 2B | 44 | 2C | 45 | 2D | 46 | 2E | 47 | 2F | 48 | 30 | 49 | 31 | 50 | 32 | 51 | 33 |
| 52 | 34 | 53 | 35 | 54 | 36 | 55 | 37 | 56 | 38 | 57 | 39 | 58 | 3A | 59 | 3B | 60 | 3C | 61 | 3D |
| 62 | 3E | 63 | 3F | 64 | 40 | 65 | 41 | 66 | 42 | 67 | 43 | 68 | 44 | 69 | 45 | 70 | 46 | 71 | 47 |
| 72 | 48 | 73 | 49 | 74 | 4A | 75 | 4B | 76 | 4C | 77 | 4D | 78 | 4E | 79 | 4F | 80 | 50 | 81 | 51 |
| 82 | 52 | 83 | 53 | 84 | 54 | 85 | 55 | 86 | 56 | 87 | 57 | 88 | 58 | 89 | 59 | 90 | 5A | 91 | 5B |
| 92 | 5C | 93 | 5D | 94 | 5E | 95 | 5F | 96 | 60 | 97 | 61 | 98 | 62 | 99 | 63 | 100 | 64 | 101 | 65 |
| 102 | 66 | 103 | 67 | 104 | 68 | 105 | 69 | 106 | 6A | 107 | 6B | 108 | 6C | 109 | 6D | 110 | 6E | 111 | 6F |
| 112 | 70 | 113 | 71 | 114 | 72 | 115 | 73 | 116 | 74 | 117 | 75 | 118 | 76 | 119 | 77 | 120 | 78 | 121 | 79 |
| 122 | 7A | 123 | 7B | 124 | 7C | 125 | 7D | 126 | 7E | 127 | 7F | 128 | 80 | 129 | 81 | 130 | 82 | 131 | 83 |
| 132 | 84 | 133 | 85 | 134 | 86 | 135 | 87 | 136 | 88 | 137 | 89 | 138 | 8A | 139 | 8B | 140 | 8C | 141 | 8D |
| 142 | 8E | 143 | 8F | 144 | 90 | 145 | 91 | 146 | 92 | 147 | 93 | 148 | 94 | 149 | 95 | 150 | 96 | 151 | 97 |
| 152 | 98 | 153 | 99 | 154 | 9A | 155 | 9B | 156 | 9C | 157 | 9D | 158 | 9E | 159 | 9F | 160 | A0 | 161 | A1 |
| 162 | A2 | 163 | A3 | 164 | A4 | 165 | A5 | 166 | A6 | 167 | A7 | 168 | A8 | 169 | A9 | 170 | AA | 171 | AB |
| 172 | AC | 173 | AD | 174 | AE | 175 | AF | 176 | B0 | 177 | B1 | 178 | B2 | 179 | B3 | 180 | B4 | 181 | B5 |
| 182 | B6 | 183 | B7 | 184 | B8 | 185 | B9 | 186 | BA | 187 | BB | 188 | BC | 189 | BD | 190 | BE | 191 | BF |



Section 3

Using TROY Fonts

TROY EAN-13 Barcode

<Esc>(8Y<Esc>(slp□vøsb2463ØT □ = desired height

| | | | | | | | | | | | | | | | | | | | |
|-----|----|-----|----|-----|----|-----|----|-----|----|-----|----|-----|----|-----|----|-----|----|-----|----|
| 32 | 20 | 33 | 21 | 34 | 22 | 35 | 23 | 36 | 24 | 37 | 25 | 38 | 26 | 39 | 27 | 40 | 28 | 41 | 29 |
| 42 | 2A | 43 | 2B | 44 | 2C | 45 | 2D | 46 | 2E | 47 | 2F | 48 | 30 | 49 | 31 | 50 | 32 | 51 | 33 |
| 52 | 34 | 53 | 35 | 54 | 36 | 55 | 37 | 56 | 38 | 57 | 39 | 58 | 3A | 59 | 3B | 60 | 3C | 61 | 3D |
| 62 | 3E | 63 | 3F | 64 | 40 | 65 | 41 | 66 | 42 | 67 | 43 | 68 | 44 | 69 | 45 | 70 | 46 | 71 | 47 |
| 72 | 48 | 73 | 49 | 74 | 4A | 75 | 4B | 76 | 4C | 77 | 4D | 78 | 4E | 79 | 4F | 80 | 50 | 81 | 51 |
| 82 | 52 | 83 | 53 | 84 | 54 | 85 | 55 | 86 | 56 | 87 | 57 | 88 | 58 | 89 | 59 | 90 | 5A | 91 | 5B |
| 92 | 5C | 93 | 5D | 94 | 5E | 95 | 5F | 96 | 60 | 97 | 61 | 98 | 62 | 99 | 63 | 100 | 64 | 101 | 65 |
| 102 | 66 | 103 | 67 | 104 | 68 | 105 | 69 | 106 | 6A | 107 | 6B | 108 | 6C | 109 | 6D | 110 | 6E | 111 | 6F |
| 112 | 70 | 113 | 71 | 114 | 72 | 115 | 73 | 116 | 74 | 117 | 75 | 118 | 76 | 119 | 77 | 120 | 78 | 121 | 79 |
| 122 | 7A | 123 | 7B | 124 | 7C | 125 | 7D | 126 | 7E | 127 | 7F | 128 | 80 | 129 | 81 | 130 | 82 | 131 | 83 |
| 132 | 84 | 133 | 85 | 134 | 86 | 135 | 87 | 136 | 88 | 137 | 89 | 138 | 8A | 139 | 8B | 140 | 8C | 141 | 8D |
| 142 | 8E | 143 | 8F | 144 | 90 | 145 | 91 | 146 | 92 | 147 | 93 | 148 | 94 | 149 | 95 | 150 | 96 | 151 | 97 |
| 152 | 98 | 153 | 99 | 154 | 9A | 155 | 9B | 156 | 9C | 157 | 9D | 158 | 9E | 159 | 9F | 160 | A0 | 161 | A1 |
| 162 | A2 | 163 | A3 | 164 | A4 | 165 | A5 | 166 | A6 | 167 | A7 | 168 | A8 | 169 | A9 | 170 | AA | 171 | AB |
| 172 | AC | 173 | AD | 174 | AE | 175 | AF | 176 | B0 | 177 | B1 | 178 | B2 | 179 | B3 | 180 | B4 | 181 | B5 |
| 182 | B6 | 183 | B7 | 184 | B8 | 185 | B9 | 186 | BA | 187 | BB | 188 | BC | 189 | BD | 190 | BE | 191 | BF |



Section 3

Using TROY Fonts

TROY BC25 Barcode

<Esc> (4Y<Esc> (slp vø sø b2464øT = desired height

| | | | | | | | | | |
|--------|--------|--------|--------|--------|--------|--------|--------|--------|--------|
| 32 20 | 33 21 | 34 22 | 35 23 | 36 24 | 37 25 | 38 26 | 39 27 | 40 28 | 41 29 |
| 42 2A | 43 2B | 44 2C | 45 2D | 46 2E | 47 2F | 48 30 | 49 31 | 50 32 | 51 33 |
| 52 34 | 53 35 | 54 36 | 55 37 | 56 38 | 57 39 | 58 3A | 59 3B | 60 3C | 61 3D |
| 62 3E | 63 3F | 64 40 | 65 41 | 66 42 | 67 43 | 68 44 | 69 45 | 70 46 | 71 47 |
| 72 48 | 73 49 | 74 4A | 75 4B | 76 4C | 77 4D | 78 4E | 79 4F | 80 50 | 81 51 |
| 82 52 | 83 53 | 84 54 | 85 55 | 86 56 | 87 57 | 88 58 | 89 59 | 90 5A | 91 5B |
| 92 5C | 93 5D | 94 5E | 95 5F | 96 60 | 97 61 | 98 62 | 99 63 | 100 64 | 101 65 |
| 102 66 | 103 67 | 104 68 | 105 69 | 106 6A | 107 6B | 108 6C | 109 6D | 110 6E | 111 6F |
| 112 70 | 113 71 | 114 72 | 115 73 | 116 74 | 117 75 | 118 76 | 119 77 | 120 78 | 121 79 |
| 122 7A | 123 7B | 124 7C | 125 7D | 126 7E | 127 7F | 128 80 | 129 81 | 130 82 | 131 83 |
| 132 84 | 133 85 | 134 86 | 135 87 | 136 88 | 137 89 | 138 8A | 139 8B | 140 8C | 141 8D |
| 142 8E | 143 8F | 144 90 | 145 91 | 146 92 | 147 93 | 148 94 | 149 95 | 150 96 | 151 97 |
| 152 98 | 153 99 | 154 9A | 155 9B | 156 9C | 157 9D | 158 9E | 159 9F | 160 A0 | 161 A1 |
| 162 A2 | 163 A3 | 164 A4 | 165 A5 | 166 A6 | 167 A7 | 168 A8 | 169 A9 | 170 AA | 171 AB |
| 172 AC | 173 AD | 174 AE | 175 AF | 176 B0 | 177 B1 | 178 B2 | 179 B3 | 180 B4 | 181 B5 |
| 182 B6 | 183 B7 | 184 B8 | 185 B9 | 186 BA | 187 BB | 188 BC | 189 BD | 190 BE | 191 BF |

Section 3

Using TROY Fonts

TROY BC39 Barcode

<Esc>(ØY<Esc>(slp□vøsoB2467ØT □ = desired height

| | | | | | | | | | |
|--------|--------|--------|--------|--------|--------|--------|--------|--------|--------|
| 32 20 | 33 21 | 34 22 | 35 23 | 36 24 | 37 25 | 38 26 | 39 27 | 40 28 | 41 29 |
| | | | | | | | | | |
| 42 2A | 43 2B | 44 2C | 45 2D | 46 2E | 47 2F | 48 30 | 49 31 | 50 32 | 51 33 |
| | | | | | | | | | |
| 52 34 | 53 35 | 54 36 | 55 37 | 56 38 | 57 39 | 58 3A | 59 3B | 60 3C | 61 3D |
| | | | | | | | | | |
| 62 3E | 63 3F | 64 40 | 65 41 | 66 42 | 67 43 | 68 44 | 69 45 | 70 46 | 71 47 |
| | | | | | | | | | |
| 72 48 | 73 49 | 74 4A | 75 4B | 76 4C | 77 4D | 78 4E | 79 4F | 80 50 | 81 51 |
| | | | | | | | | | |
| 82 52 | 83 53 | 84 54 | 85 55 | 86 56 | 87 57 | 88 58 | 89 59 | 90 5A | 91 5B |
| | | | | | | | | | |
| 92 5C | 93 5D | 94 5E | 95 5F | 96 60 | 97 61 | 98 62 | 99 63 | 100 64 | 101 65 |
| | | | | | | | | | |
| 102 66 | 103 67 | 104 68 | 105 69 | 106 6A | 107 6B | 108 6C | 109 6D | 110 6E | 111 6F |
| | | | | | | | | | |
| 112 70 | 113 71 | 114 72 | 115 73 | 116 74 | 117 75 | 118 76 | 119 77 | 120 78 | 121 79 |
| | | | | | | | | | |
| 122 7A | 123 7B | 124 7C | 125 7D | 126 7E | 127 7F | 128 80 | 129 81 | 130 82 | 131 83 |
| | | | | | | | | | |
| 132 84 | 133 85 | 134 86 | 135 87 | 136 88 | 137 89 | 138 8A | 139 8B | 140 8C | 141 8D |
| | | | | | | | | | |
| 142 8E | 143 8F | 144 90 | 145 91 | 146 92 | 147 93 | 148 94 | 149 95 | 150 96 | 151 97 |
| | | | | | | | | | |
| 152 98 | 153 99 | 154 9A | 155 9B | 156 9C | 157 9D | 158 9E | 159 9F | 160 A0 | 161 A1 |
| | | | | | | | | | |
| 162 A2 | 163 A3 | 164 A4 | 165 A5 | 166 A6 | 167 A7 | 168 A8 | 169 A9 | 170 AA | 171 AB |
| | | | | | | | | | |
| 172 AC | 173 AD | 174 AE | 175 AF | 176 B0 | 177 B1 | 178 B2 | 179 B3 | 180 B4 | 181 B5 |
| | | | | | | | | | |
| 182 B6 | 183 B7 | 184 B8 | 185 B9 | 186 BA | 187 BB | 188 BC | 189 BD | 190 BE | 191 BF |
| | | | | | | | | | |

Section 3

Using TROY Fonts

TROY BC128 Barcode

<Esc>(ØY<Esc>(slp□vøsb247ØØT □ = desired height

| | | | | | | | | | | | | | | | | | | | |
|-----|----|-----|----|-----|----|-----|----|-----|----|-----|----|-----|----|-----|----|-----|----|-----|----|
| 0 | 00 | 1 | 01 | 2 | 02 | 3 | 03 | 4 | 04 | 5 | 05 | 6 | 06 | 7 | 07 | 8 | 08 | 9 | 09 |
| 10 | 0A | 11 | 0B | 12 | 0C | 13 | 0D | 14 | 0E | 15 | 0F | 16 | 10 | 17 | 11 | 18 | 12 | 19 | 13 |
| 20 | 14 | 21 | 15 | 22 | 16 | 23 | 17 | 24 | 18 | 25 | 19 | 26 | 1A | 27 | 1B | 28 | 1C | 29 | 1D |
| 30 | 1E | 31 | 1F | 32 | 20 | 33 | 21 | 34 | 22 | 35 | 23 | 36 | 24 | 37 | 25 | 38 | 26 | 39 | 27 |
| 40 | 28 | 41 | 29 | 42 | 2A | 43 | 2B | 44 | 2C | 45 | 2D | 46 | 2E | 47 | 2F | 48 | 30 | 49 | 31 |
| 50 | 32 | 51 | 33 | 52 | 34 | 53 | 35 | 54 | 36 | 55 | 37 | 56 | 38 | 57 | 39 | 58 | 3A | 59 | 3B |
| 60 | 3C | 61 | 3D | 62 | 3E | 63 | 3F | 64 | 40 | 65 | 41 | 66 | 42 | 67 | 43 | 68 | 44 | 69 | 45 |
| 70 | 46 | 71 | 47 | 72 | 48 | 73 | 49 | 74 | 4A | 75 | 4B | 76 | 4C | 77 | 4D | 78 | 4E | 79 | 4F |
| 80 | 50 | 81 | 51 | 82 | 52 | 83 | 53 | 84 | 54 | 85 | 55 | 86 | 56 | 87 | 57 | 88 | 58 | 89 | 59 |
| 90 | 5A | 91 | 5B | 92 | 5C | 93 | 5D | 94 | 5E | 95 | 5F | 96 | 60 | 97 | 61 | 98 | 62 | 99 | 63 |
| 100 | 64 | 101 | 65 | 102 | 66 | 103 | 67 | 104 | 68 | 105 | 69 | 106 | 6A | 107 | 6B | 108 | 6C | 109 | 6D |
| 110 | 6E | 111 | 6F | 112 | 70 | 113 | 71 | 114 | 72 | 115 | 73 | 116 | 74 | 117 | 75 | 118 | 76 | 119 | 77 |
| 120 | 78 | 121 | 79 | 122 | 7A | 123 | 7B | 124 | 7C | 125 | 7D | 126 | 7E | 127 | 7F | 128 | 80 | 129 | 81 |
| 130 | 82 | 131 | 83 | 132 | 84 | 133 | 85 | 134 | 86 | 135 | 87 | 136 | 88 | 137 | 89 | 138 | 8A | 139 | 8B |
| 140 | 8C | 141 | 8D | 142 | 8E | 143 | 8F | 144 | 90 | 145 | 91 | 146 | 92 | 147 | 93 | 148 | 94 | 149 | 95 |
| 150 | 96 | 151 | 97 | 152 | 98 | 153 | 99 | 154 | 9A | 155 | 9B | 156 | 9C | 157 | 9D | 158 | 9E | 159 | 9F |



Section 3

Using TROY Fonts

TROY
POSTNET

<Esc>(15Y<Esc>(slp□vøsoøb2477øT □ = desired height

| | | | | | | | | | | | | | | | | | | | |
|-----|----|-----|----|-----|----|-----|----|-----|----|-----|----|-----|----|-----|----|-----|----|-----|----|
| 32 | 20 | 33 | 21 | 34 | 22 | 35 | 23 | 36 | 24 | 37 | 25 | 38 | 26 | 39 | 27 | 40 | 28 | 41 | 29 |
| 42 | 2A | 43 | 2B | 44 | 2C | 45 | 2D | 46 | 2E | 47 | 2F | 48 | 30 | 49 | 31 | 50 | 32 | 51 | 33 |
| 52 | 34 | 53 | 35 | 54 | 36 | 55 | 37 | 56 | 38 | 57 | 39 | 58 | 3A | 59 | 3B | 60 | 3C | 61 | 3D |
| 62 | 3E | 63 | 3F | 64 | 40 | 65 | 41 | 66 | 42 | 67 | 43 | 68 | 44 | 69 | 45 | 70 | 46 | 71 | 47 |
| 72 | 48 | 73 | 49 | 74 | 4A | 75 | 4B | 76 | 4C | 77 | 4D | 78 | 4E | 79 | 4F | 80 | 50 | 81 | 51 |
| 82 | 52 | 83 | 53 | 84 | 54 | 85 | 55 | 86 | 56 | 87 | 57 | 88 | 58 | 89 | 59 | 90 | 5A | 91 | 5B |
| 92 | 5C | 93 | 5D | 94 | 5E | 95 | 5F | 96 | 60 | 97 | 61 | 98 | 62 | 99 | 63 | 100 | 64 | 101 | 65 |
| 102 | 66 | 103 | 67 | 104 | 68 | 105 | 69 | 106 | 6A | 107 | 6B | 108 | 6C | 109 | 6D | 110 | 6E | 111 | 6F |
| 112 | 70 | 113 | 71 | 114 | 72 | 115 | 73 | 116 | 74 | 117 | 75 | 118 | 76 | 119 | 77 | 120 | 78 | 121 | 79 |
| 122 | 7A | 123 | 7B | 124 | 7C | 125 | 7D | 126 | 7E | 127 | 7F | 128 | 80 | 129 | 81 | 130 | 82 | 131 | 83 |
| 132 | 84 | 133 | 85 | 134 | 86 | 135 | 87 | 136 | 88 | 137 | 89 | 138 | 8A | 139 | 8B | 140 | 8C | 141 | 8D |
| 142 | 8E | 143 | 8F | 144 | 90 | 145 | 91 | 146 | 92 | 147 | 93 | 148 | 94 | 149 | 95 | 150 | 96 | 151 | 97 |
| 152 | 98 | 153 | 99 | 154 | 9A | 155 | 9B | 156 | 9C | 157 | 9D | 158 | 9E | 159 | 9F | 160 | A0 | 161 | A1 |
| 162 | A2 | 163 | A3 | 164 | A4 | 165 | A5 | 166 | A6 | 167 | A7 | 168 | A8 | 169 | A9 | 170 | AA | 171 | AB |
| 172 | AC | 173 | AD | 174 | AE | 175 | AF | 176 | B0 | 177 | B1 | 178 | B2 | 179 | B3 | 180 | B4 | 181 | B5 |
| 182 | B6 | 183 | B7 | 184 | B8 | 185 | B9 | 186 | BA | 187 | BB | 188 | BC | 189 | BD | 190 | BE | 191 | BF |



Section 3

Using TROY Fonts

**TROY
POSTNET
Reverse
(optional)**

<Esc>(15Y<Esc>(slp□v0s33b24770T □ = desired height

| | | | | | | | | | |
|--------|--------|--------|--------|--------|--------|--------|--------|--------|--------|
| 32 20 | 33 21 | 34 22 | 35 23 | 36 24 | 37 25 | 38 26 | 39 27 | 40 28 | 41 29 |
| 42 2A | 43 2B | 44 2C | 45 2D | 46 2E | 47 2F | 48 30 | 49 31 | 50 32 | 51 33 |
| 52 34 | 53 35 | 54 36 | 55 37 | 56 38 | 57 39 | 58 3A | 59 3B | 60 3C | 61 3D |
| 62 3E | 63 3F | 64 40 | 65 41 | 66 42 | 67 43 | 68 44 | 69 45 | 70 46 | 71 47 |
| 72 48 | 73 49 | 74 4A | 75 4B | 76 4C | 77 4D | 78 4E | 79 4F | 80 50 | 81 51 |
| 82 52 | 83 53 | 84 54 | 85 55 | 86 56 | 87 57 | 88 58 | 89 59 | 90 5A | 91 5B |
| 92 5C | 93 5D | 94 5E | 95 5F | 96 60 | 97 61 | 98 62 | 99 63 | 100 64 | 101 65 |
| 102 66 | 103 67 | 104 68 | 105 69 | 106 6A | 107 6B | 108 6C | 109 6D | 110 6E | 111 6F |
| 112 70 | 113 71 | 114 72 | 115 73 | 116 74 | 117 75 | 118 76 | 119 77 | 120 78 | 121 79 |
| 122 7A | 123 7B | 124 7C | 125 7D | 126 7E | 127 7F | 128 80 | 129 81 | 130 82 | 131 83 |
| 132 84 | 133 85 | 134 86 | 135 87 | 136 88 | 137 89 | 138 8A | 139 8B | 140 8C | 141 8D |
| 142 8E | 143 8F | 144 90 | 145 91 | 146 92 | 147 93 | 148 94 | 149 95 | 150 96 | 151 97 |
| 152 98 | 153 99 | 154 9A | 155 9B | 156 9C | 157 9D | 158 9E | 159 9F | 160 A0 | 161 A1 |
| 162 A2 | 163 A3 | 164 A4 | 165 A5 | 166 A6 | 167 A7 | 168 A8 | 169 A9 | 170 AA | 171 AB |
| 172 AC | 173 AD | 174 AE | 175 AF | 176 B0 | 177 B1 | 178 B2 | 179 B3 | 180 B4 | 181 B5 |
| 182 B6 | 183 B7 | 184 B8 | 185 B9 | 186 BA | 187 BB | 188 BC | 189 BD | 190 BE | 191 BF |



International Convenience Amount Fonts

In addition to the CMC-7 font used for International MICR applications, TROY provides the following Convenience Amount font sets in a variety of languages (see examples below). These fonts are provided only on the *TROY Security Printing Solutions* CD. These fonts can be easily downloaded into the printer's memory using the TROY Printer Utility.

The following TROY International fonts are non-scalable (fixed in size) and can be used in the *convenience amount* field of the check. The escape sequence used to call each font set in a non-Windows environment is provided directly above each example. The examples below may not be to scale.

British Large Convenience Amount Font (Troy LCF British)

<Esc>(1Q<Esc>(s0p5.14h16.09v0s0b1T

1 2 3 4 5 6 7 8 9 0 £ € € * , .
ONE TWO THREE FOUR FIVE SIX SEVEN EIGHT NINE ZERO G.B.P EURO AST COM PER

French Large Convenience Amount Font (Troy LCF French)

<Esc>(1Q<Esc>(s0p5.14h16.09v0s0b2T

1 2 3 4 5 6 7 8 9 0 FF € € * , .
UN DEUX TROIS QUATRE CINQ SIX SEPT HUIT NEUF ZERO FRANC EURO AST VIRG PUNTO

Italian Large Convenience Amount Font (Troy LCF Italian)

<Esc>(1Q<Esc>(s0p5.14h16.09v0s0b3T

1 2 3 4 5 6 7 8 9 0 £ € € * , .
UNO DUE TRE QUATRO CINQUE SEI SETTE OTTO NOVE ZERO LIRA EURO AST VIRG PUNTO

Spanish Large Convenience Amount Font (Troy LCF Spanish)

<Esc>(1Q<Esc>(s0p5.14h16.09v0s0b4T

1 2 3 4 5 6 7 8 9 0 \$ € € * , .
UNO DOS TRES CUATRO CINCO SEIS SIETE OCHO NUEVE CERO DOLAR EURO AST COMA PUNTO

International Convenience Amount Fonts (cont.)

British Small Convenience Amount Font (Troy SCF British)

<Esc> (2Q<Esc> (sØp6h22.68vØsØb1T

1 2 3 4 5 6 7 8 9 0 £ € € * , .

ONE TWO THREE FOUR FIVE SIX SEVEN EIGHT NINE ZERO G.B.P. EURO AST VIRG COM PER

French Small Convenience Amount Font (Troy SCF French)

<Esc> (2Q<Esc> (sØp6h22.68vØsØb2T

1 2 3 4 5 6 7 8 9 0 FF € € * , .

UN DEUX TROIS QUATRE CINQ SIX SEPT HUIT NEUF ZERO FRANC EURO AST VIRG POINT

Italian Small Convenience Amount Font (Troy SCF Italian)

<Esc> (2Q<Esc> (sØp6h22.68vØsØb3T

1 2 3 4 5 6 7 8 9 0 £ € € * , .

UNO DUE TRE QUATRO CINQUE SEI SETTE OTTO NOVE ZERO LIRA EURO AST VIRG PUNTO

Spanish Small Convenience Amount Font (Troy SCF Spanish)

<Esc> (2Q<Esc> (sØp6h22.68vØsØb4T

1 2 3 4 5 6 7 8 9 0 \$ € € * , .

UNO DOS TRES CUATRO CINCO SEIS SIETE OCHO NUEVE CERO DOLAR EURO AST COMA PUNTO

Trouble-shooting by Symptom

The following troubleshooting table provides solutions to the most common MICR printing problems. Some of the messages may not apply to your TROY Security Printing Solution. Visually inspect your MICR documents using the *TROY MICR Document Template* where appropriate.

NOTE: This table does not cover all of the ANSI and banking specifications that MICR-encoded documents must meet. Refer to the *TROY MICR Basics Handbook* (provided on the *TROY Security Printing Solutions CD*) for more information on MICR specifications and check design.

| Condition | Possible Cause | Solution |
|--|--|---|
| Incorrect data in MICR line (account #, bank #, etc.). | Error typing in the account #, etc. | Re-enter the correct data. |
| Incorrect format of fields in MICR line (according to your bank's specifications). | Error typing in the field information. | Re-enter the correct data. Ask your bank for its specification sheet or copy the field format from your old checks, including any spaces. |
| Vertical streaking or smearing throughout document. | Problem with the Hewlett-Packard printer or TROY MICR toner cartridge. | Refer to the troubleshooting section in the printer user's manual. |
| Horizontal streaking in MICR clear band during document processing. | Problem with the reader/sorter machine. | The reader/sorter machine must be cleaned and checked or adjusted. |

Trouble-shooting by Symptom (cont.)

| | | |
|---|---|--|
| <p>600 dpi MICR font not used in MICR line (an incorrect font such as Courier or Times Roman was used instead).</p> | <p>No MICR font installed.</p> <p>MICR mode disabled and an attempt was made to use a TROY MICR font.</p> <p>Software error.</p> <p>MICR font requested orientation (portrait or landscape) not installed in the printer.</p> <p>Non-TROY MICR font was used.</p> <p>Font escape sequence coding error.</p> | <p>Install the TROY Font Memory Card and reprint the document.</p> <p>Consult your software dealer.</p> <p>Enable MICR mode by issuing the appropriate escape sequence via your check writing software.</p> <p>Install the correct orientation of MICR font via the TROY Memory Card.</p> <p>Use the TROY MICR font or consult the non-TROY MICR font manufacturer for assistance.</p> <p>Verify the escape sequence accuracy.</p> |
| <p>MICR clear band has magnetically chargeable printing besides the MICR line on front or backside of document.</p> | <p>Border, signature, or other printing extends into MICR clear band on front or back.</p> <p>Laser-printed items extend into MICR clear band on backside of the check.</p> | <p>Reformat your document design to ensure nothing besides the MICR line appears in the MICR clear band.</p> <p>Reformat your document design or other laser-printed items so that there is no MICR information on the check.</p> |

Trouble-shooting by Symptom (cont.)

| | | |
|--|--|--|
| <p>MICR clear band has extra printing (such as toner splatter) besides the MICR line on front or backside of document.</p> | <p>Printer density setting is too dark.</p> <p>Printer fusing unit is contaminated.</p> <p>Faulty MICR toner cartridge.</p> <p>Use on Non-TROY MICR toner cartridge.</p> | <p>Use TROY MICR defaults.</p> <p>Refer to printer user's manual for cleaning instructions.</p> <p>Try another TROY MICR toner cartridge. If cartridge is faulty, return to the dealer.</p> <p>Try another TROY MICR toner cartridge, or consult the non-TROY manufacturer for assistance.</p> |
| <p>MICR line is skewed on document.</p> | <p>Your MICR paper was cut or perforated inaccurately (lower edge of paper is not perpendicular to the right and left edges of paper).</p> <p>Your MICR paper has changed properties due to environmental conditions in storage or handling.</p> <p>Paper incorrectly loaded.</p> <p>Faulty paper transport system in printer.</p> | <p>Measure your MICR paper and/or perforation lines to ensure your MICR-encoded documents fall within ANSI specifications for document size. Ask your paper vendor for correctly sized MICR paper.</p> <p>Measure your MICR paper and/or perforation lines to ensure your MICR-encoded documents fall within ANSI specifications for document size.</p> <p>If using MP tray, paper width guide should lightly touch right side of paper stack.</p> <p>Try non-MICR paper to verify the problem. Contact TROY Technical Support if problem is verified on non-MICR paper.</p> |

Trouble-shooting by Symptom (cont.)

| | | |
|--|--|---|
| <p>MICR line not positioned correctly on the document (vertically and horizontally).</p> | <p>Your MICR paper was cut or perforated inaccurately (paper is too short/long or narrow/wide).</p> <p>Software registration is off (software is positioning data incorrectly on the printed page).</p> <p>Printer registration discrepancies (small inconsistencies in positioning of the image on the printed page)</p> <p>Faulty paper transport system in printer.</p> | <p>Measure your MICR paper and/or perforation lines to ensure your MICR-encoded documents fall within ANSI specifications for document size. Ask your paper vendor for correctly sized MICR paper.</p> <p>Make adjustments in your software application to adjust the positioning of the MICR line, or consider purchasing the TROY MICR Secure Memory Card, which includes the ExPT feature that allows you to reposition the MICR line via the printer control panel. Use the TROY MICR Document Template to verify all adjustments to the MICR line.</p> <p>Small errors in the printer's registration can change the position of the MICR line, which is most noticeable on the trailing edge of the printed page. If the MICR line on your checks is positioned on trailing edge of the page (the edge of the page that exits the printer last), try using the TROY printer's Auto-Rotate feature to place the MICR line on the leading edge of the page to avoid any small registration errors that would significantly change the position of the MICR on your printed checks.</p> <p>Measure your MICR paper. If cut to correct size, consult your software vendor for assistance.</p> <p>Try non-MICR paper to verify the problem. Consult the printer user's manual or TROY Technical support if problem is verified on non-MICR paper.</p> |
|--|--|---|

Trouble-shooting by Symptom (cont.)

| | | |
|---|---|---|
| <p>MICR characters are too thick or too thin.</p> | <p>Printer density setting is too dark or too light.</p> <p>Your MICR toner cartridge is nearly empty.</p> <p>Your MICR paper is out of specification so that toner does not adhere properly to the paper.</p> <p>Faulty MICR toner cartridge.</p> <p>Use of Non-TROY MICR toner or font.</p> | <p>Use TROY MICR defaults.</p> <p>TROY MICR toner cartridge should not be used if a LOW TONER message appears on the printer control panel display. (There should be no visual fading across the document).</p> <p>Refer to TROY MICR paper specifications elsewhere in this guide and consult your paper vendor to ensure you have the correct paper (including correctly preprinted background areas). Also, check to ensure your paper has not altered due to environmental conditions during storage and handling.</p> <p>Try another TROY MICR toner cartridge. If the cartridge is faulty, return to dealer.</p> <p>Try TROY MICR toner or font or consult non-TROY manufacturer for assistance.</p> |
|---|---|---|

Trouble-shooting by Symptom (cont.)

| | | |
|---|--|--|
| <p>MICR characters are broken, there are voids in characters or toner rubs off.</p> | <p>Your MICR paper is out of specification so that toner does not adhere properly to the paper.</p> <p>Faulty MICR toner cartridge.</p> <p>Use of Non-TROY MICR toner cartridge.</p> <p>Printer fusing unit is faulty.</p> | <p>Refer to the TROY MICR paper specifications and consult your paper vendor to ensure you have the correct paper (including correctly preprinted background areas). Also, check to ensure your paper has not altered due to environmental conditions during storage and handling.</p> <p>Try another TROY MICR toner cartridge. If cartridge is faulty, return to dealer.</p> <p>Try TROY MICR toner cartridge or consult non-TROY manufacturer for assistance.</p> <p>Confirm by verifying with a non-MICR application. Contact TROY Technical Support for instructions.</p> |
| <p>Voids in characters in MICR line or other text.</p> | <p>Transfer roller wear (check for page count of greater than 100,000).</p> | <p>Replace transfer roller.</p> |
| <p>MICR character spacing and positioning is not correct.</p> | <p>Error in typing MICR line information.</p> <p>Software placement of characters is incorrect.</p> | <p>Re-enter correct data. (Do not forget to enter the correct number of spaces where required.) If using TROY MICR fonts in Windows, ensure the point size is set to 12 pt.</p> <p>Consult your software dealer, or consider purchasing the TROY MICR Secure Memory Card, which includes the ExPT feature that allows you to reposition the MICR line via the printer control panel.</p> |

Trouble-shooting by Symptom (cont.)

| | | |
|--|--|---|
| <p>Your bank reports a high reject rate when processing your TROY MICR-printed documents.</p> <p>NOTE: This section covers conditions not addressed above. You should also investigate all of the items described above as possible causes of bank rejects as well as the other ANSI MICR specifications not covered in this table.</p> | <p>A Non-TROY MICR toner was used.</p> <p>The bank-of-deposit made a typing or imprinting error when they encoded the check AMOUNT onto the right end of the MICR line.</p> <p>Your MICR paper is out of specification so that your documents tend to jam or tear inside bank processing equipment.</p> <p>Documents were folded, spindled, or otherwise roughly handled before they reached the bank-of-deposit.</p> <p>Your bank's reader/sorter equipment is out of adjustment.</p> | <p>Print test documents using TROY MICR toner or consult the non-TROY manufacturer for assistance.</p> <p>Ask your bank or one of the document testing facilities in the list following this table to determine if the MICR line error is in the TROY MICR-printed portion of the bank-encoded portion (many errors are bank induced).</p> <p>Observe the condition of your processed checks. Refer to this guide for information on TROY and ANSI MICR paper specifications. Your paper vendor or bank may also provide assistance.</p> <p>Consider sturdier MICR paper or improved check-handling processes with your regular recipients.</p> <p>Ask your bank for assistance in determining the cause of your rejects.</p> |
|--|--|---|

Trouble-shooting by Symptom (cont.)

| | | |
|---|---|--|
| <p>MICR characters appear smeared after processing by a bank.</p> | <p>A Non-TROY MICR toner was used.</p> <p>Your MICR paper is out of specification so that toner does not adhere properly to the paper.</p> <p>Your bank's reader/sorter equipment is out of adjustment.</p> | <p>Print test documents using TROY MICR toner or consult the non-TROY manufacturer for assistance.</p> <p>Refer to TROY MICR paper specifications and consult your paper vendor to ensure you have the correct paper (including correctly preprinted background areas). Also, check to ensure your paper has not altered due to environmental conditions before printing the checks.</p> <p>Ask your bank for assistance in determining the cause of your rejects.</p> |
| <p>NO MICR TONER message displayed in the printer control panel.</p> | <p>No TROY MICR toner cartridge installed.</p> <p>Detect device on TROY MICR toner cartridge is damaged.</p> <p>TROY MICR toner cartridge detect sensor failed.</p> <p>TROY Memory Card has failed.</p> | <p>Install a TROY MICR toner cartridge.</p> <p>Install a new TROY MICR toner cartridge.</p> <p>Call TROY Technical Support.</p> <p>Call TROY Technical Support.</p> |

Troubleshooting by Printer Control Panel Display Message

The following table contains the printer control panel display messages generated by TROY Security Printing Solutions. Some of the messages may not apply to your TROY Security Printing Solution. Refer to the Hewlett-Packard Printer User's Manual for other display panel messages.

| Message | Description | Action |
|---------------------------------------|---|--|
| LOW TONER | The TROY MICR toner cartridge is low on toner. | Replace the TROY MICR toner cartridge with a new TROY MICR toner cartridge. Do not re-install the old cartridge. |
| TROY INTERNAL RELIANCE MONITOR | The TROY firmware contains advanced internal self-diagnostics checks to ensure constant data integrity. When the firmware detects an exception condition that may result in compromised data integrity, it halts printer operation. This message will be followed automatically with diagnostic information that may assist TROY engineers in evaluating the exception condition. | Contact TROY Technical Support. |
| 49.4C18 SERVICE ERROR | A firmware update has been uploaded to the printer. This error message may appear immediately after the update process has been completed, indicating that the printer has registered the new firmware. | Re-initialize the printer (cycle printer power), or perform a cold reset. Wait for the initialization sequence to finish before continuing to use the printer. The printer must be re-initialized in order for the firmware update to take effect. |
| 53.0X.10 ERROR | Your printer detected the presence of a second system DIMM or memory card. | Remove the DIMMs or memory cards one at a time until the message is cleared, or contact your TROY service representative. |
| 61.X SERVICE 62.X ERROR | Indicates that the TROY Font Memory Card is improperly installed or has failed. | Re-install the TROY Font Memory Card. |
| 68.1 ERROR | A firmware update has been uploaded to the printer. This error message may appear immediately after the update process has been completed, indicating that the printer has registered the new firmware. | Re-initialize the printer (cycle printer power), or perform a cold reset. Wait for the initialization sequence to finish before continuing to use the printer. The printer must be re-initialized in order for the firmware update to take effect. |