

---

# TRIAX TR 305

---

## Digital Terrestrial Receiver



## User's Manual



# General Safety

## Warning

Always follow these instructions to avoid the risk of injury to yourself or damage to your equipment.

Unplug the receiver from the AC power outlet before cleaning.  
Use only a damp cloth for cleaning the exterior of the receiver.

Do not use accessories or attachments not recommended by the receiver manufacturer as they may cause problems to the equipment and will void the warranty.

Do not place the receiver on an unstable cart, stand, tripod, bracket, or table.  
The receiver may fall, causing serious personal injury and damage to the receiver.

Do not block or cover the slot opening in the receiver.  
These are provided for ventilation and protection from overheating.  
Never place the receiver near or over a radiator or any heat source.  
Do not place the receiver in an enclosure such as a cabinet without proper ventilation

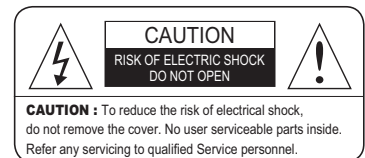
Do not stack the receiver on top of or below other electronic devices.

The apparatus shall not be exposed to dripping or splashing and with no object filled with liquids, such as vases, shall be placed on the apparatus.

Operate the receiver using only the type of power source indicated on the marking label.  
Unplug the receiver power cord by gripping the power plug, not the cord.

Route power supply cord so that are not likely to be walked on or pinched by items placed upon or against them. Pay particular attention to the cords that plugs in the convenience receptacles, and the point where they exit from the unit.

Use an outlet that contains surge suppression or ground fault protection.  
For added protection during a lightning storm, or when the receiver is left unattached and unused for long periods of time, unplug it from the wall outlet and disconnect the lines between the receiver and the antenna. This will provide some protection against electrical damage caused by lightning or power line surges.



## Servicing

Do not attempt to service the receiver yourself, as opening or removing covers may expose you to dangerous voltage, and will void warranty.

Refer all servicing to authorized service personnel.

# General Safety

## Digital Terrestrial Receiver Owner's Manual

### OPERATION HANDBOOK

Before operation,  
Please read the entire manual thoroughly  
and retain it for future reference.



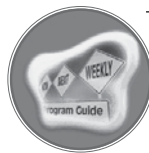
Channel List



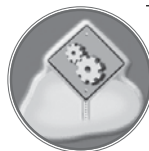
Edit Channel List



Program Guide



System Setting



Automatic Search



Manual Search



CA System



Utility

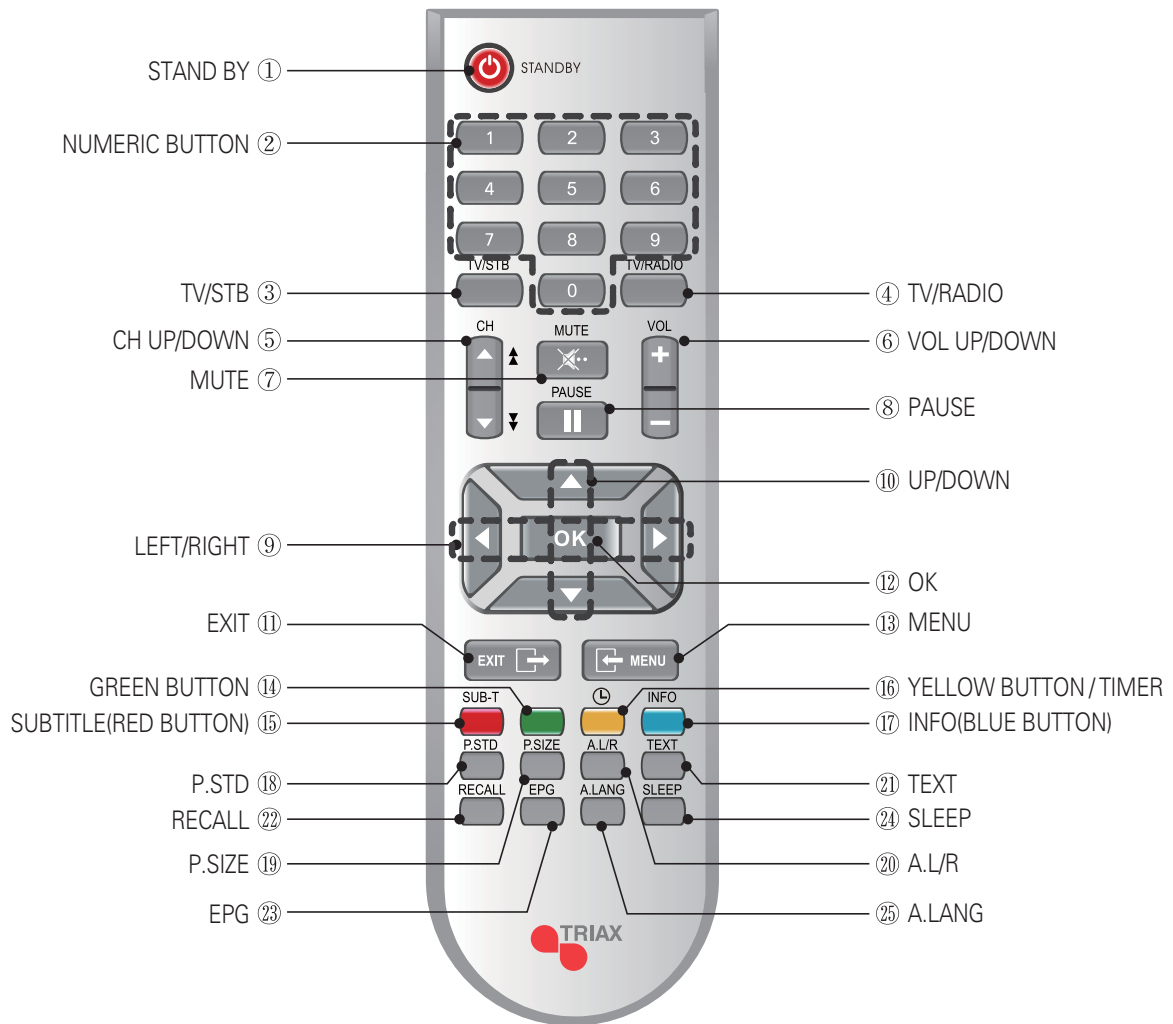
# Contents

<b>Remote Control Unit</b> .....	6
<b>Front Panel</b> .....	8
<b>Rear Panel</b> .....	9
<b>Connecting Your Equipment</b> .....	10
<b>Basic Operation</b> .....	13
<b>Menu Guide</b> .....	17
Easy Installation .....	17
Main Menu .....	19
Channel Search .....	20
Automatic Search .....	20
Manual Search .....	21
Channel List .....	22
Edit Channel List .....	23
Program Guide .....	26
System Setting .....	27
Menu Language .....	27
Audio Language .....	27
Subtitle Language .....	28
SCART Output .....	28
Screen Type .....	28
Banner Time .....	29
RF Mode .....	29

# Contents

RF Channel .....	29
Local Time .....	30
Menu Transparency .....	30
Change PIN Code .....	30
Parental Lock .....	31
Parent Rating .....	31
Menu Lock .....	31
S/PDIF Output (Option) .....	31
Auto Power .....	32
Network Search .....	32
Factory Reset .....	32
OTA Upgrade .....	32
System Information .....	32
<b>CA System</b> .....	<b>33</b>
<b>Utility</b> .....	<b>34</b>
<b>Troubleshooting</b> .....	<b>36</b>
<b>Technical Specifications</b> .....	<b>37</b>
<b>Menu Map</b> .....	<b>39</b>

# Remote Control Unit



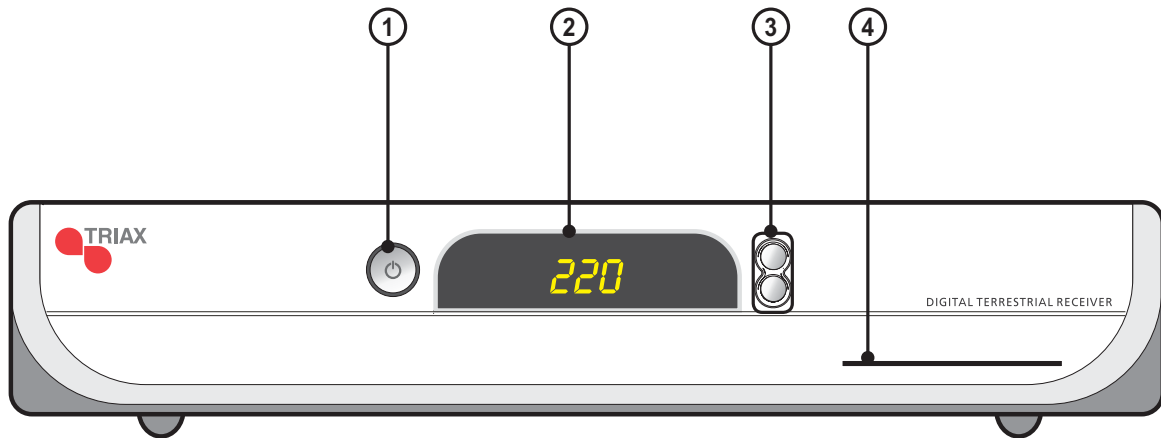
**Note 1** When inserting batteries, make sure that the polarity (+/-) is correct.

**2** The design of the Remote Control Unit may be changed without any notice in advance.

# Remote Control Unit

- |                          |  |
|--------------------------|--|
| ① <b>STAND BY</b>        | To switch between operation and stand by mode.   |
| ② <b>NUMERIC BUTTONS</b> | To select the channel and enter the channel edit and PIN code.                                 |
| ③ <b>TV/STB</b>          | To switch between TV and STB receive mode.   |
| ④ <b>TV/RADIO</b>        | To switch between TV and Radio.  |
| ⑤ <b>CHANNEL UP/DOWN</b> | To change channel up and down.   |
| ⑥ <b>VOLUME UP/DOWN</b>  | To increase or decrease the volume.  |
| ⑦ <b>MUTE</b>            | To enable or disable audio.  |
| ⑧ <b>PAUSE</b>           | To pause or play video.  |
| ⑨ <b>LEFT/RIGHT</b>      | To move left or right on the menu.<br>To increase or decrease the volume.                      |
| ⑩ <b>UP/DOWN</b>         | To move up or down on the menu.  |
| ⑪ <b>EXIT</b>            | To return the normal viewing mode from a menu.   |
| ⑫ <b>OK</b>              | To confirm your choice.  |
| ⑬ <b>MENU</b>            | To display the Main Menu on the screen or return to the previous menu.                         |
| ⑭ <b>GREEN</b>           | To see the current information banner guide or the satellite list.                             |
| ⑮ <b>SUBTITLE(RED)</b>   | To enable or disable subtitle or change the channel list mode.                                 |
| ⑯ <b>YELLOW</b>          | To sort channel list.  |
| ⑰ <b>INFO(BLUE)</b>      | To display the information box on the screen.  |
| ⑱ <b>P.STD</b>           | To change picture standard. (Option)   |
| ⑲ <b>P.SIZE</b>          | To change screen size.   |
| ⑳ <b>A.L/R</b>           | To select the sound mode.(Mono, Left, Right, Stereo)<br>To display the reserved list. (Option) |
| ㉑ <b>TEXT</b>            | To see the teletext by OSD. (Option)   |
| ㉒ <b>RECALL</b>          | To return to the previous channel.   |
| ㉓ <b>EPG</b>             | To display the TV/RADIO program guide.   |
| ㉔ <b>SLEEP</b>           | To select a present time interval for automatic shut off.                                      |
| ㉕ <b>A/LANG</b>          | To select the audio language.  |

## Front Panel



**1. POWER(STAND BY)**

Switch the receiver power **"ON"** or **"OFF"**.

**2. SEG. DISP.**

4-digit 7-segment display channel information.

**3. CH ▲ or ▼**

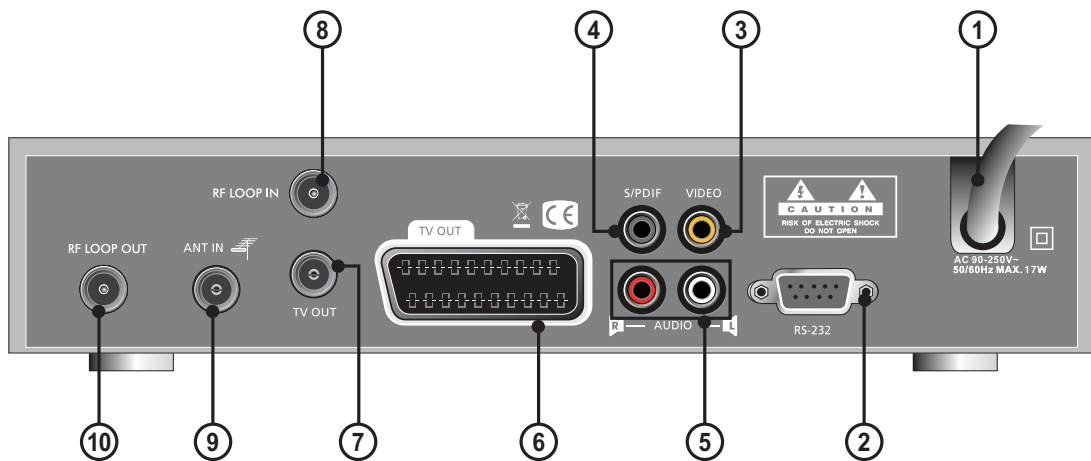
Channel Up/Down or select item of sub-menu.

**4. Smartcard Slot(Optional)**

1 slot for smartcard.



## Rear Panel



### 1. POWER SUPPLY

90-250V~ 50/60Hz.

### 2. RS-232

To connect to a personal computer for software upgrade.

### 3. VIDEO

Video connection port to the TV or other equipment.

### 4. S/PDIF

To connect a digital amplifier output.

### 5. AUDIO

Audio connection port to the TV or other equipment.

### 6. SCART FOR TV

Connect this port to the TV via SCART cable.

### 7. TV OUT

To connect a TV via a coaxial cable.

### 8. RF LOOP IN

To connect general aerial antenna and cable jacks to an RF input jack on the rear of the receiver.

### 9. ANT IN

To connect to a CATV line and CATV ANT IN jack.

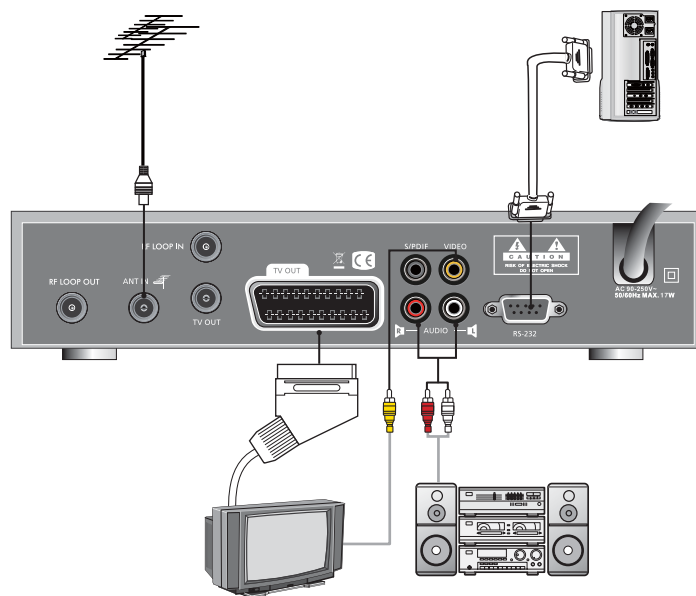
### 10. RF LOOP OUT

To connect other cable receiver.

# Connecting Your Equipment

## How to connect your STB to various systems

There are several ways of connecting the STB to your TV, VCR and/or Hi-Fi SYSTEM. Consult your local supplier for assistance in setting-up your system that is best suited to your requirements.



### 1. Connect STB to a TV set

Connect your STB to a TV set with SCART, if your TV set is equipped for it. Alternatively you can use A/V, TV out (UHF) or S/Video jacks.

### 2. Connect STB to a Hi-Fi System

Connect a RCA stereo cable from the AUDIO L/R jacks, S/PDIF on your STB to the LINE, AUX, SPARE or EXTRA input jacks on your Hi-Fi System.

### 3. Connect STB to a Digital Audio System

If you have a DAC with S/PDIF coaxial cable input, you can connect the STB with it to enjoy higher quality sound. Connect S/PDIF coaxial cable to a digital amplifier.

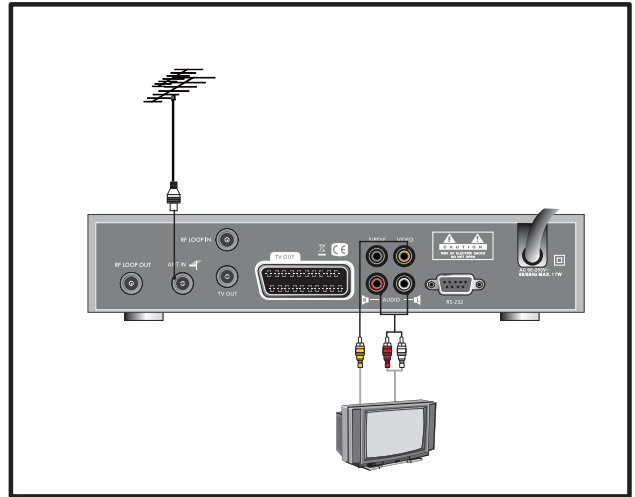
### 4. Loop Through

If you have another analogue or digital STB and you wish to use the same CATV line then you can connect it via the loop through. Connect one end of the coaxial cable to the Loop Through on the STB and connect the other end to the CATV ANT. IN jack on your second STB.

# Connecting Your Equipment

## TV with Terrestrial Antenna

1. Connect one end of RCA/Cinch cable to the RCA/Cinch jack on the back of the STB and the other end to a RCA/Cinch jack on your TV. If your TV doesn't have a RCA/Cinch jack, connect one end of RF cable to the TV OUT on the back of the STB and the other end to a RF input jack on your TV.
2. Connect one end of RF cable to the ANT IN on the back of the STB and the other end to a terrestrial antenna connection or the jack for the public antenna on the wall.
3. Finally connect the coaxial cable from the CATV line to the ANT jack on back of the STB.



## Front Panel Display Message

### KEY & DISPLAY

The message of the 7-segment LED (Light-Emitting Diode) on the STB and keys are explained as below.

Standby Mode

System Booting

Power Off

MICOM Version

Boot Loader Version

Download

Down Load Procedure

Current Program Number on TV List

Current Program Number on Radio List

TV Mode

STB Mode

Upgrade

Upgrade Procedure

Upgrade Complete

# Basic Operation

## Basic Function



### 1. Program Information

*After the television channels have been programmed, you will see the information box each time you change the channels.*

1. Every time you change channels you will receive program information for a few seconds. (In the "**Banner Time**" menu you can select how long this information will be shown.)
2. You may change channel lists with the ▲ or ▼ buttons.  
You can get "**Channel Banner**" on the bottom of the screen.
3. When you press the **COLOR** button, you can use banner as a simple channel operation. In this case, you can get a simple EPG on right view.

### 2. Now-Information Banner

1. During "**Channel Banner**" is appearing, when you press **GREEN** button, you can get "**Now-Information Banner**".
2. Using "**Now-Information Banner**", you can get a simple EPG of "**Now-Information**".

### 3. Next-Information Banner

1. During "**Channel Banner**" is appearing, when you press **YELLOW** button, you can get "**Next-Information Banner**".
2. Using "**Next-Information Banner**", you can get a simple EPG of "**Next-Information**".

# Basic Operation

## Basic Function



### 4. Channel-Information Banner

1. During "**Channel Banner**" is appearing, when you press **INFO(BLUE)** button, you can get "**Channel-Information Banner**".
2. Using "**Channel-Information Banner**", you can get a detailed channel listing information.



### 5. Volume Control/Mute

1. To control audio volume, press **VOL ▲** or **▼** buttons.
2. Volume control bar will be appeared in bottom of the TV screen
3. After time-out in 1 second, volume control bar will disappear.  
To temporarily stop the volume, press the **MUTE** button.  
To cancel mute, press the **MUTE** button again or press the **VOL ▲** or **▼** buttons.



### 6. Teletext / Subtitle

1. Press the **RED** button, popup window will be displayed on the screen.
2. Select the off, then subtitle function is off.
3. Select the **Subtitle**, then you can see the subtitle language.
4. Select the **Teletext**, then you can see the teletext language.

# Basic Operation

## Basic Function



### 7. Timer

The user can reserve a desired program at a desired time by using the **Timer** function.

1. Once, Daily, Weekly Reservation.

- ◆ Use the **▲**, **▼**, **◀**, or **▶** buttons in the Timer Setting screen to select the date and time.
- ◆ Press the **OK** button to save the selected time on the Disk icon. The program will record at each and every selected time.

**Once** : once  
**Daily** : daily  
**Weekly** : weekly  
**Off** : off

2. Reservation from EPG (Option).

- ◆ Selects the desired program to be reserved from the EPG screen. Pressing the **YELLOW** button will open the **Timer** Window.

### 8. Simple Channel List

1. When you press **OK** button during receiving service stream, you can get "**Channel List**" view.

2. Using **▲** or **▼** buttons in "**Channel List**" view, you can choose another channel.

3. After moving highlight on a channel, then press **OK** button.

4. Press **SUB-T(RED)** button to change channel listing.

5. To get the channel sort list, press the **YELLOW** button.

Pop up window will be displayed on the screen.

When you press **YELLOW** button, the sort and CAS sort are toggled.

6. Select the sort list you want with **▲** or **▼** buttons and then press **OK** button to get it.

# Basic Operation

## Basic Function



### 9. Soundtrack

1. When you want to change the Audio Language of current channel, press the **A.LANG** button on the remote control.  
The on-screen menu is displayed on the left side of the screen.
2. Use ▲ or ▼ buttons to choose the audio you want.
3. To cancel or exit, press the **A.LANG** button again.

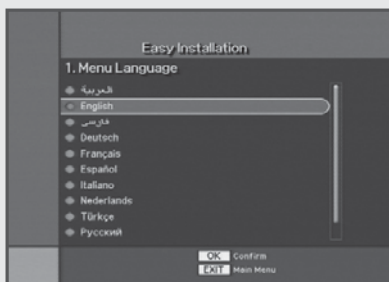
**You can change a default audio language in the system setting menu mode.**

### 10. To change the audio output

1. Press the **A.L/R** button on the remote control unit to change the output.
2. Then on-screen menu is displayed on the top right side of the screen.
3. Press the **A.L/R** button repeatedly to change the sound mode.  
(Mono, Left, Right, Stereo)

# Menu Guide

## Easy Installation



**Before you can view the television or radio program, you must perform the installation procedure first.**

**Therefore you will see only "Easy Installation Menu" at first when you plug in your system.**

**The Easy Installation gives you the convenience of selecting various languages, adjusting the time and channel search.**

### 1. Automatic Installation by "Easy Installation"

The Installation Wizard is user friendly to assure easy set-up of the receiver by the new user.

### 2. System Connection

Connect STB to all peripheral devices such as TV, Audio, Video etc..

### 3. Power On

Turn on the STB power and other devices.

### 4. Power Off

When you press the **STAND BY** button again.

The STB will display "OFF".



# Menu Guide

## Easy Installation

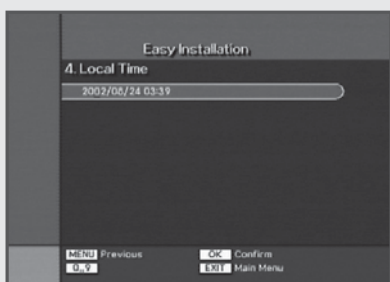


### Language

The first option is "**Language Select**" to select the desired language of the Menu, Audio, or Subtitle.

Place the cursor on the sub menu by pressing the keys and press the **OK** button to change language.

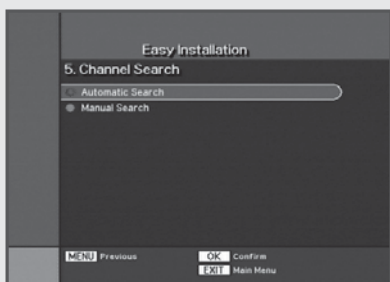
The Language of Menu, Audio, or Subtitle will be changed to the selected language.



### Local Time

You can set your local time according to your location.

To set the local time, press **NUMERIC** buttons.



### Channel Search

You can search the channels according to the Automatic or Manual mode. Press the **OK** button. Channel Search screen will appear.

# Menu Guide

## Main Menu



**Press the MENU button on the remote control unit.  
You will see the "Main Menu" on the screen.**

1. You can move into the desired submenu using ▲ or ▼ buttons.
2. You should enter the PIN code in order to move into the corresponding submenu in case of **"Edit Channel List"** or **"System Setting"**.
3. Press **OK** button to confirm your selection.
4. Press the **MENU** button to return to previous menu.  
Or press the **EXIT** button to quit the Menu system completely.

**Main Menu shows the following information.**

- |                          |   |
|--------------------------|---|
| <b>Channel List</b>      | : Shows Favorite 1~4 all channels, sort.  |
| <b>Edit Channel List</b> | : Edits favorite 1 ~ 4, Lock, Skip, Delete, or Move.  |
| <b>Program Guide</b>     | : Shows Now, Next, Weekly program guide.  |
| <b>System Setting</b>    | : Set Menu Language, Audio Language, Subtitle Language, SCART Output, Screen Type, Banner Time, RF Mode, RF Channel, Local Time, Menu Transparency, Change PIN code, Parental Lock, Parent Rating, Menu Lock, SPDIF Output, Auto Power, Network Search, Factory Reset, OTA Upgrade, and System Information. |
| <b>Automatic Search</b>  | : Search automatically channels.  |
| <b>Manual Search</b>     | : Search manually channels.   |
| <b>CA System(option)</b> | : Shows CAS Information.  |
| <b>Utility (option)</b>  | : Game, Demonstration, Calendar, Zoom, Mail Box.  |

# Menu Guide

## Channel Search



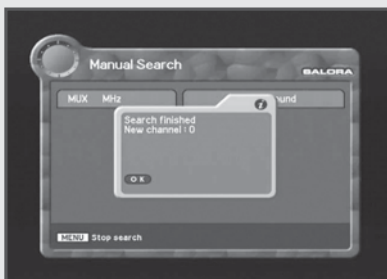
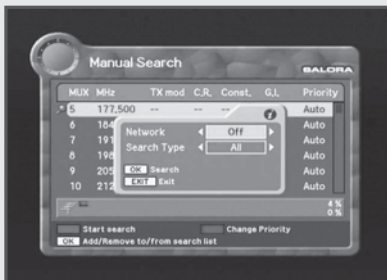
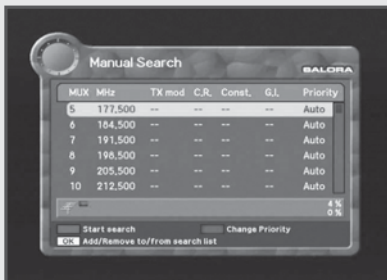
**Select Automatic/Manual channel search in main menu.**

### **Automatic Search**

1. Press Automatic Search in Main Menu.
2. Input a proper Start Frequency of the cable signal using **NUMERIC** buttons.
3. Input a proper End Frequency of the cable signal using **NUMERIC** buttons.
4. Input a proper Symbol Rate of the cable signal using **NUMERIC** buttons.
5. Select the Constellation(AUTO, 16, 32, 64, 128 or 256 QAM) using ◀ or ▶ buttons.
6. Press **OK** button.
7. When searching is started, the name of channels searched will be displayed on the screen.
8. When searching is finished, the "**Search finished**" message will be displayed on the center of the screen.
9. Press the **OK** button to save the channel list and watch the channel searched.

# Menu Guide

## Channel Search



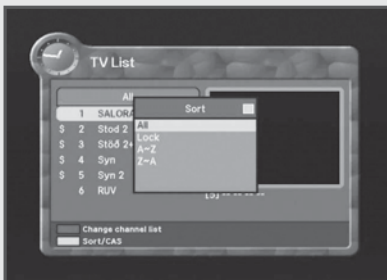
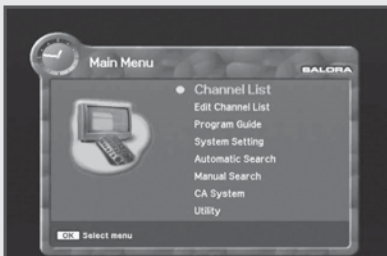
**Select Automatic/Manual channel search in main menu.**

### Manual Search

1. Press Manual Search in Main Menu.
2. Input a proper Frequency of the cable signal using **NUMERIC** buttons.
3. Input a proper Symbol Rate of the cable signal using **NUMERIC** buttons.
4. Select the Constellation (AUTO, 16, 32, 64, 128 or 256 QAM) using ◀ or ▶ buttons.
5. Select the spectral Invert (Auto, Off or On)
6. Select for the Network Search(Off or On). When you select "**On**," you can find more services using the home network.
7. Press **OK** button.
8. When searching is started, the name of channels searched will be displayed on the screen.
9. When searching is finished, the "**Search finished**" message will be displayed on the center of the screen.
10. Press the **OK** button to save the channel list and watch the channel searched.

# Menu Guide

## Channel List



***This menu helps you to easily select the channel that you want to watch. You can see the channel list when you had searched before. To use this menu, you should set channel group you want in the Edit Channel List menu.***

1. Select "**Channel List**" in the main menu with ▲ or ▼ and press **OK** button.
2. Using ▲ or ▼ buttons, you can choose your channel with small-sized video view on right side.

**Note** To get the full-sized video view, press **EXIT** button.

3. To see the available channel list, use the **SUB-T(RE D)** button on the remote control unit repeatedly.

***The channel list moves in the following sequence :***

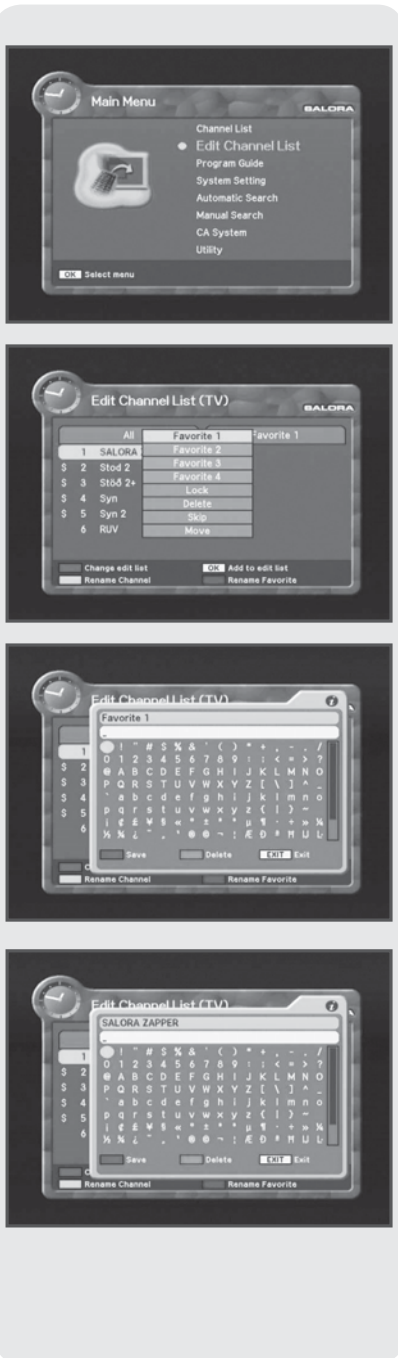
ALL → Favorite from 1 to 4 → Lock

4. Press the **TV/RADIO** button to toggle between TV channel list and Radio channel list.
5. To get the channel sort list, press the **GREEN** button. Pop up window will be displayed on the screen. When you press **GREEN** button, the sort and CAS sort are toggled.
6. Select the sort list you want with ▲ or ▼ buttons and then press **OK** button to get it.

**ALL, Lock, A~Z, Z~A.**

# Menu Guide

## Edit Channel List



**From these menus,  
You can edit favorite lists, lock, skip, delete, or move channel.**

1. Select "**Edit Channel List**" in the main menu with **▲** or **▼** buttons and press **OK** button.
2. At the request window, Input **PIN** code.  
If you have not entered your own PIN code, then the PIN code **0000** applies, which was set at the factory.
3. Press the **SUB-T(RE D)** button. The edit list will be displayed on the screen. Select the sub menu you want in the list and press **OK** button. The selected sub menu will be displayed at the right folder.
4. Among the all channel list, the selected channel can be moved to the right folder of favorite 1~4, Lock, Delete, Skip, or Move. Press **OK** button to add from edit list at right folder.
5. To remove the channel list from edit list at right folder, press **OK** button. The edited list will be removed.
6. To rename the channel, press **YELLOW** button.
7. To confirm the channel list, press the **MENU** button or **EXIT** button. The request window will be displayed on the screen, Press **OK** button to save or **EXIT** button to exit this menu.

# Menu Guide

## Edit Channel List



### 1. Favorite 1 ~ 4

1. You can edit favorite TV and Radio list.  
This enables you to create the 4 favorite TV and Radio lists.
2. Select the channel you want to edit favorite list and press **OK** button.

**Note** To rename the Favorite channel, press **INFO(BLUE)** button.



### 2. Lock

1. From here you can lock channels in any of the list in order to prevent (e.g. your children from watching.)
2. Select the channel you want to lock and press **OK** button.
3. Repeat the procedure for each channel you want to lock.  
When you lock a channel in any list, the channel will be locked automatically in all other lists.



### 3. Delete

1. You can delete TV or Radio channel from the current list.
2. Select the channel you want to delete and press **OK** button.



### 4. Skip

1. You can skip TV or Radio channel from the current list.
2. Select the channel you want to skip and press **OK** button.  
Skipped channel will be by passed while scrolling on the TV or RADIO channel list.
3. To recover the skipped channel, press the **OK** button from edit list.

# Menu Guide

## Edit Channel List



### 5. Move

1. You can change the position of the channel you want on the TV/Radio/ All channel lists.
2. Select the channel you want to move to desired channel and press the **OK** button.
3. And press the **INFO(BLUE)** button to change the position of the channel you want.
4. Using **▲** or **▼** buttons, select the channel you want to move and press **OK** button.
5. The position of the channel will be moved.

## Program Guide



**The program guide supplies information such as program listings and ending times for all available programs.**

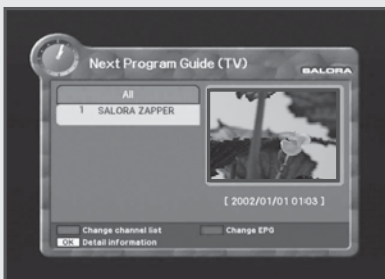
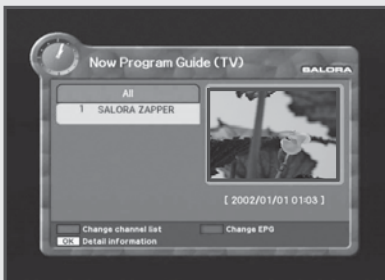
1. Select "**Program Guide**" in the main menu with **▲** or **▼** buttons and press **OK** button. In the viewing program, when you press the **EPG** button, you can get this view.

**Note** The Program Guide information may not be supplied by service providers.



# Menu Guide

## Program Guide



### 1. Now/Next Program Guide

**Shows the information of Present/Following program on different channels. To watch the programs you go through the display window :**

1. Select a program with **▲** or **▼** buttons, you can get the list at right-side view.
2. Use the **SUB-T(RE D)** button to change the channel list.
3. After selecting the program you want, press **OK** button. You can see the detailed information.
4. If you want to change program guide, press **INFO(BLUE)** button.

### 2. Weekly Program Guide

**Shows the information of program that will be played for a week.**

1. When you press **INFO(BLUE)** button, you can alternatively select Now, Next or Weekly EPG.
2. To see more information about the program you want on the weekly EPG, move the highlighted channel by pressing **▲**, **▼**, **◀**, or **▶** buttons and then press **OK** button.

### 3. EPG Information

1. To view the Program Guide, press the **EPG** button on the remote control unit. The EPG information will be displayed on the bottom of the screen.
2. Each press of **▲** or **▼** buttons will change the displayed EPG information by one hour.
3. Each press of **◀** or **▶** buttons will change the displayed EPG information by one day.
4. If there is available EPG information, it will be displayed on the EPG information bar.
5. Press the **EPG** button again, and the Program Guide menu will be displayed.

# Menu Guide

## System Setting



**You will be asked to enter your PIN code before you can enter this menu. The PIN code preset to 0000 from the factory. The code can be changed from the "Change PIN Code" menu. Refer to page 30.**

**If you want to customize the system to suit you better, you can specify some settings from the submenus in the "System Setting" menu.**

1. Select "**System Setting**" in the main menu with ▲ or ▼ buttons and press **OK** button.
2. Select sub menu you want in System Setting with ▲ or ▼ buttons. The sub menu will be shown at the right side of the screen.
3. Using ► button to move the cursor on sub menu or return to "**Setup List**" using ◀ button.

### 1. Menu Language

**Here you may select in which language the menus will be shown.**

1. Use the ▲ or ▼ buttons to move to the language you want and then press **OK** button.  
You can choose the language from a selection of **English, Suomi, Svenska, Norsk, Dansk**.  
The selected menu language will be applied on whole menu.

### 2. Audio Language

**In this menu You can change default language for audio when changing services.**

1. Use the ▲ or ▼ buttons to move to language you want and then press **OK** button.  
You can choose the language from a selection of **English, Finnish, Swedish, Norwegian, Danish**.

# Menu Guide

## System Setting



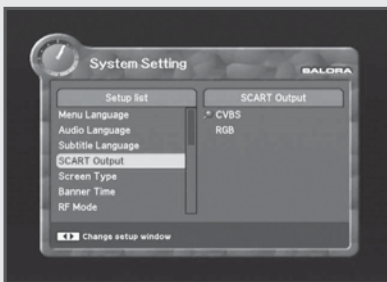
### 3. Subtitle Language

*In this menu You can change default language for subtitle when changing services.*

1. Use the ▲ or ▼ buttons to move to language you want and then press **OK** button.

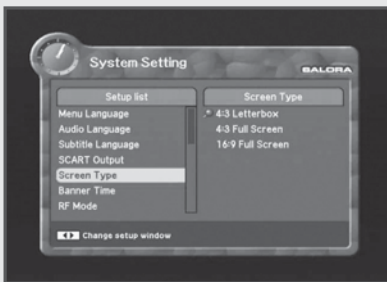
You can choose the language from a selection of **English, Finnish, Swedish, Norwegian, Danish.**

**Note** If you cancel the subtitle function, select the off. (Option)



### 4. SCART Output

*If your SCART supports RGB control, select RGB. Otherwise select CVBS.*



### 5. Screen Type

*If you have a TV set with the 4:3 picture format and the transmission is in 16:9, you can select 4:3 letterbox, 4:3 full screen and 16:9 full screen.*

1. Select the aspect ratio of **TV** which is connected to **STB** and then press **OK** button.

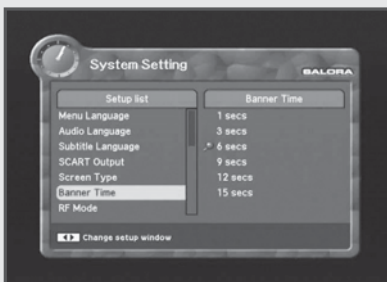
**Note 1** Fullscreen will fill up the screen but cut off some information on the left and right sides.

**2** Letterbox will give a complete picture, but leave black areas at the top and bottom.

**3** For easy selection of Screen Type, press the **PSIZE** button on your remote control.

# Menu Guide

## System Setting

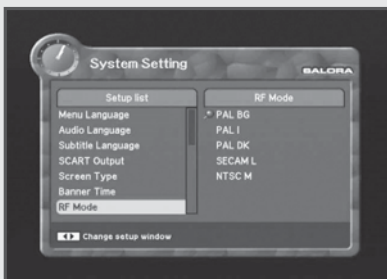


### 6. Banner Time

**When you switch channels, an information banner will be shown for a few seconds.**

**You can select for how long the banner will be shown.**

1. Select the banner time you want and then press **OK** button.
2. Each selectable time items has meaning of the interval time during a channel banner stays on changed channel screens. The time ranges 1, 3, 6, 9 12, and 15 seconds.

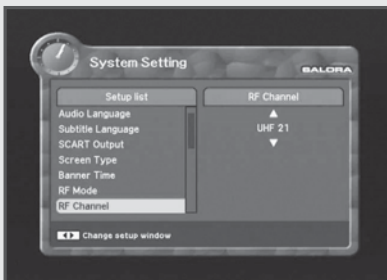


### 7. RF Mode

**You can select the RF Mode. If you get picture but no sound, the RF Mode selecting might be wrong.**

Select an RF Mode and then press **OK** button.

**RF Mode :** PAL BG, PAL I, PAL DK, SECAM L, NTSC M



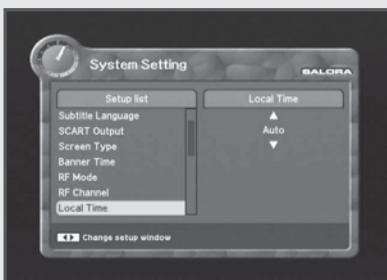
### 8. RF Channel

**Select this alternative if you have to change the RF channel.**

Select an UHF or VHF Channel you want with **▲** or **▼** buttons.

The UHF RF Channel ranges from 21 to 69.

The VHF RF Channel ranges from 3 to 4.



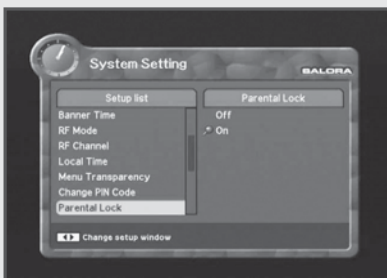
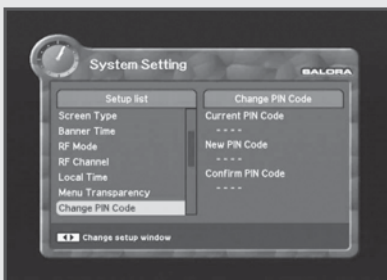
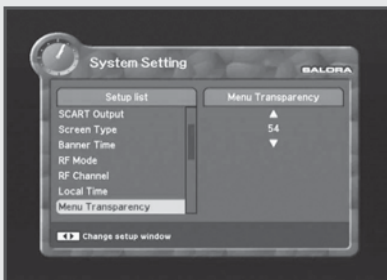
### 9. Local Time

**You can set your local time according to your location.**

1. Press **▲** or **▼** buttons to select Local Time and then press **OK** button.
2. When you press the **▲** or **▼** buttons, the time zone will move by 30 minutes.

# Menu Guide

## System Setting



### 10. Menu Transparency

**From 20 to 63 will give the variable transparency on Video and OSD screen.**

Select an menu blending ratio and press **OK** button. The transparency will be applied on the screen.

### 11. Change PIN Code

**From here you can change the PIN code from the standard 0000. DO NOT FORGET IT! Without it, you are not able to access to any of the functions where the code is required.**

You can change password for Parental Lock and Receiver Lock simultaneously.

1. Input the current PIN code using **NUMERIC** button on the remote control.
2. In the highlighted new PIN code, input a new PIN code.
3. To verify the new PIN code, re-enter a new PIN code in the highlighted confirm PIN code.

If the **PIN Code** is correct, the message "**Success**" will be displayed on the display window.

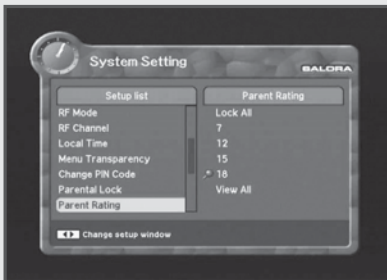
**Note** If you forget the PIN code, press the RGYB(Color) button in sequence. (i.e. Red -> Green -> Yellow -> Blue button)  
The PIN code will be changed to "0000"

### 12. Parental Lock

**When you change "Parental Lock" to "On" or "Off", service channel can get or not from that set values. If you select "On", you may need PIN code every time you select the lock channel program as you set in the channel control. If you select "Off", you can see all channels without PIN code.**

# Menu Guide

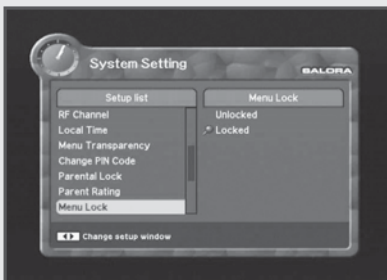
## System Setting



### 13. Parent Rating

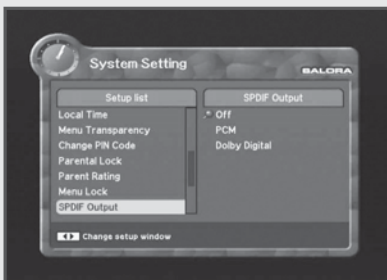
***If you select "on", you can change the Parental Lock.***

This function is - if you want the limited age, rating lock function select.



### 14. Menu Lock

***If you select "On", you will have to enter the PIN code every time when you enter the Channel Search Menu and Channel List Menu.***



### 15. S/PDIF Output

***You can hear digital audio of the Dolby 5.1 channel using S/PDIF Output.***

1. If selecting OFF, the digital audio will not be output.
2. When selecting PCM, the unzipped digital audio is output through S/PDIF.
3. When selecting Dolby Digital, if the current channel is dolby audio channel, the zipped dolby stream is output through S/PDIF.

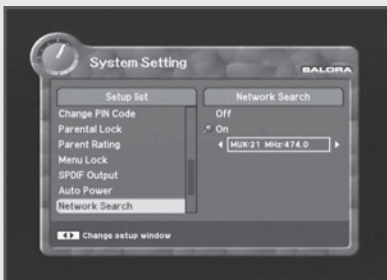
# Menu Guide

## System Setting



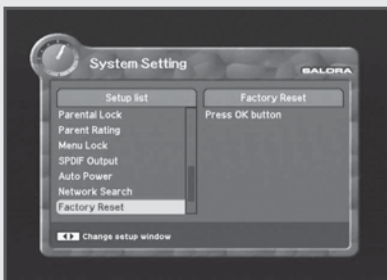
### 16. Auto Power

1. If the Auto Power is set to On and power is off, the Set turns on automatically and turns into the channel mode which you were watching before power breakdown.
2. If the Auto Power is set to Off and power is off, the Set turns into the standby mode.



### 17. Network Search

**Select 'on' in options to set up Network Search**



### 18. Factory Reset

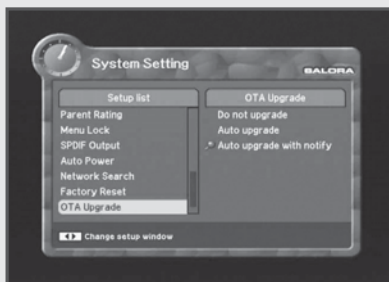
**Use this option only if you have to start the complete installation procedure from scratch. If you continue from here, all your previous settings and all channels will be cleared ! The default data will be loaded.**

If you press **OK** button, it asks for your confirmation.

If you want to reset, press **OK** button, or press **EXIT** button to exit this menu.

# Menu Guide

## System Setting



### 19. OTA Upgrade

**To set up OTA Upgrade.**

***It is possible to set up OTA upgrade manually.***

Please check if there is new software as pressing **OK** button after entering Frequency, Symbol Rate, Const..

Updated software will be downloaded.

To set up Option

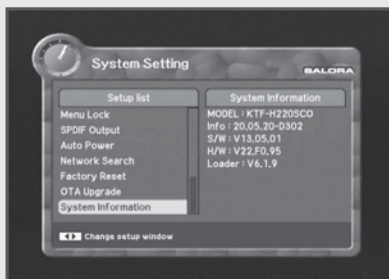
Select Option, then select **Do not upgrade**, **Auto upgrade** or **Auto upgrade with notify**.

- **Do not upgrade**
- **Auto Upgrade** : If there is new software, upgrade will be done automatically.
- **Auto Upgrade with notify** : If there is new software, pop-up window will be shown. The user can select Upgrade or not.

### 20. System Information

Displays the system information :

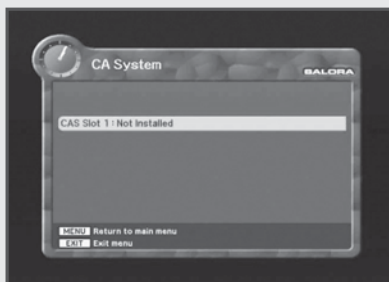
MODEL name, Last Update, S/W, H/W, Loader version, C.A.





# Menu Guide

## CA System



### *The menus are provided by Smartcard.*

Your receiver is equipped with one Smartcard slot, Plug in the appropriate a valid Smartcard.

You will then have access to the respective scrambled and Pay-Per-View services.

Insert the Smartcard into the Smartcard Slot on the front panel.

The Smartcard determine the programs that can be de-scrambled.

You can view you entitlement via the **CA System** menu by using the **MENU** button as below.

1. Press **MENU** button and select **CA System** then Smartcard Slot will be showed up on the screen and the menu will be appeared.  
If you use Slot 1 for Conax, you will see "**Conax**" on the screen.  
Select the item and then you will see information for card.  
Press **EXIT** button if you wish to exit from this menu.
2. If you inserted the Smartcard, and switch on the receiver.
3. If you do not insert the Smartcard, you will see the message "**Not Installed**". If you insert the Smartcard into the Smartcard slot then you can watch you selected channel.

# Menu Guide

## Utility



### 1. Game

1. Select "**Game**" in the Utility menu with ▲ or ▼ buttons and press ◀ or ▶ buttons.
2. Select the game you want to play and press **OK** button, and then you can play the game.

**Tetris**  
**Hexa**

### 2. Demonstration

Select "**Demonstration**" in the Utility menu with ▲ or ▼ buttons and press **OK** button, you can see the Automatic Operation Function.  
Press the **EXIT** button to quit the Automatic Operation Function completely.

### 3. Calendar

Select "**Calendar**" in the Utility menu with ▲ or ▼ buttons and press **OK** button, you can see the Calendar.

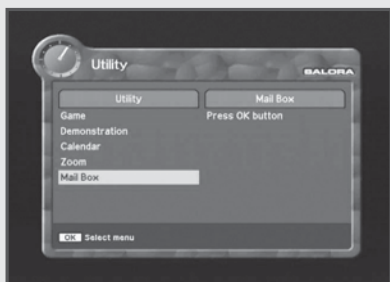
# Menu Guide

## Utility



### 4. Zoom

Select "**Zoom**" in the Utility menu with ▲ or ▼ buttons and press **OK** on, the white frame will appear.



### 5. Mail Box

You can check the messages sent by broadcasting stations.



# Troubleshooting

<b>Problem</b>	<b>Solution</b>
No display LED on the front panel. No power supply	Power cord plug in correctly.
No Picture	Ensure that the STB is switched on. Check connection and correct. Check channel and video output and correct
Poor picture quality	Check the signal level, if this is low then try adjusting the alignment of your dish.
No Sound	Check the volume level of the TV and STB. Check the mute status of the TV and STB. Check the connection of audio cord.
Remote Control does not operate	Point remote control directly towards the receiver. Check and replace batteries. Check that nothing blocks the front panel.
Service is not running or scrambled.	Check the whether the Common Interface module and smart card is correctly inserted. Check that the smart card is appropriate for the selected service.
You have forgotten your secret PIN code.	Refer to 11. change PIN code(Page 29) of this owner's manual.

## Technical Specifications

<b>Tuner</b>	
Guard Interval Modes	COFDM 2K/8K-Carrier
Channel Bandwidth	1/32, 1/16, 1/8, 1/4
FEC Modes Rate	1/2, 2/3, 3/4, 5/6, 7/8
Input Connector	IEC 169-2, Female
Frequency	UHF : 470 ~ 860 MHz, S-Band, VHF : 174 ~ 230MHz
Channel Bandwidth	7MHz, 8MHz
<b>RF Modulator</b>	
PLL type	CH 21-69 (for Europe) CH 28-69 (for Australia)
TV Standard	PAL B/G, I, D/K, SECAM L, NTSC M selectable
RF Connector	750 Ohms, 169-2, Male/Female
Frequency Range	Europe (UHF: 470 ~ 860MHz) Australia (UHF: 520 ~ 820MHz)
<b>MPEG TS A/V Decoder</b>	
Video Resolution	720 × 576
Input Bit Rate	Max. 90 Mbit/s
Transport Stream	MPEG-2 ISO/IEC 13818-1
Audio Decoding	MPEG/Musicam Layer 1 & 2
Audio Mode	Single / Dual Channel

## Technical Specifications

<b>A/V &amp; Data Input/Output</b>	
Video	RCA/Cinch, Video Output(CVBS)/SCART(CVBS, RGB)
Audio	RCA/Cinch Volume & Mute Control (Resolution: 20 bits DAC, Max 2Vrms) S/PDIF of Dolby Digital Bitstream Out
RS-232C	Transfer rate 115Kbps, 9 PIN D-Sub Type
<b>System Resources</b>	
Flash Memory	1Mbyte, 2Mbytes (Option)
SDRAM	8Mbytes, 16Mbytes (Option)
Main CPU MPEG Chip	STi 5518
<b>Power Supply</b>	
Input Voltage	AC 90 to 250V, 50/60Hz
Power Consumption	Max. 17W
Protection	Separate Internal Fuse
Type	SMPS
<b>Physical Specification</b>	
Size(W × H × D)	250 × 45 × 178(mm)
Net Weight	1.2kg
Operating Temperature	0°C ~ 50°C
Storage Temperature	-20°C ~ 60°C
<b>Option Function</b>	
Embedded CAS	CONAX, NAGRAVISION, NDS, IREDETO, CRYPTOWORKS
SW Upload	RS232C (Optional Via OTA )

# Menu Map

