



Quick Installation Guide



TU2-ET100

Table of Contents

Deutsch	1
1. Bevor Sie anfangen	1
2. Installation	2
Troubleshooting	6

1. Bevor Sie anfangen



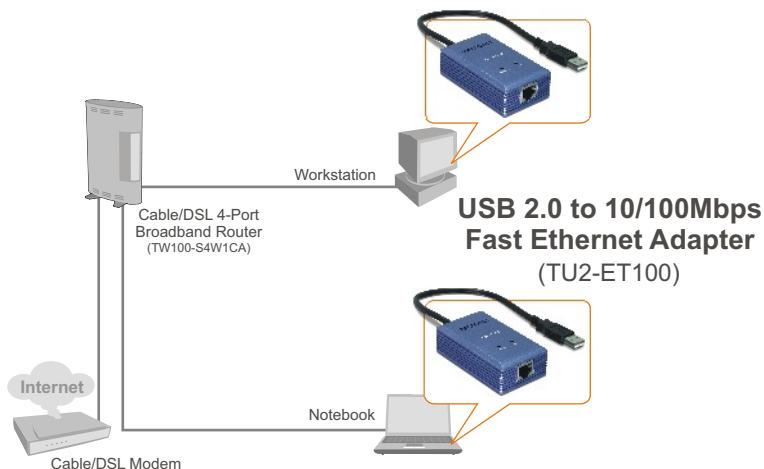
Packungsinhalt

- TU2-ET100
- Anleitung zur Schnellinstallation
- Treiber CD

Systemanforderungen

- CD-ROM-Laufwerk
- Prozessor: Intel Pentium 300 MHz oder schneller
- Speicher: 256 MB oder mehr
- Computer mit freiem USB-1.1- oder -2.0-Port
- Windows XP/2000/ME/98SE, Mac OS X

Anwendung



2. Installation

1. Legen Sie die Treiber-CD in Ihr CD-ROM-Laufwerk ein.

2. Verbinden Sie den Adapter mit einem freien USB-Port Ihres Computers. Daraufhin erscheint der **Found New Hardware Wizard** (der Assistent „Neue Hardwarekomponente gefunden“).

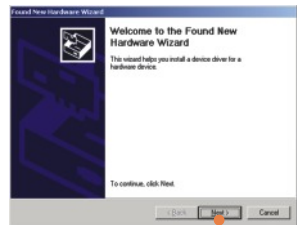


Windows XP



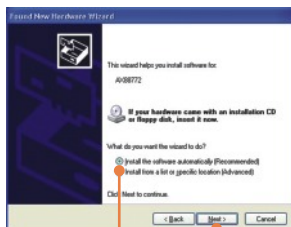
3. Markieren Sie **No** (Nein) und klicken Sie dann auf **Next** (Weiter).

Windows 2000



3. Klicken Sie auf **Next** (Weiter).

Windows XP



4. Markieren Sie **Install the software automatically** (Software automatisch installieren) und klicken Sie auf **Next** (Weiter).

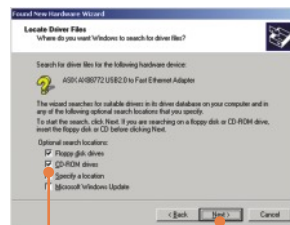


5. Klicken Sie auf **Continue Anyway** (Vorgang dennoch fortsetzen).

Windows 2000

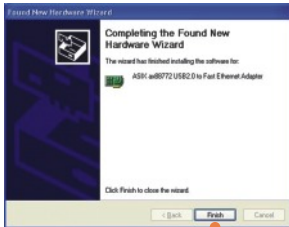


4. Markieren Sie **Search for a suitable driver for my device (recommended)** (Nach einem passenden Treiber für mein Gerät suchen (empfohlen)) und klicken Sie dann auf **Next** (Weiter).



5. Klicken Sie auf **CD-ROM drive** (CD-ROM-Laufwerk) und anschließend auf **Next** (Weiter).

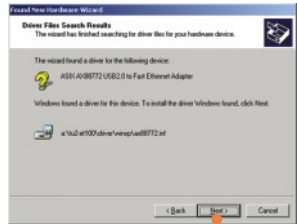
Windows XP



6. Klicken Sie auf **Finish** (Fertigstellen).

7. Gehen Sie zu Schritt 9.

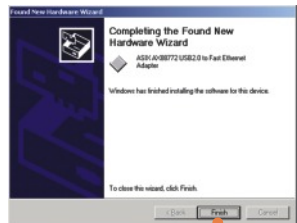
Windows 2000



6. Klicken Sie auf **Next** (Weiter).

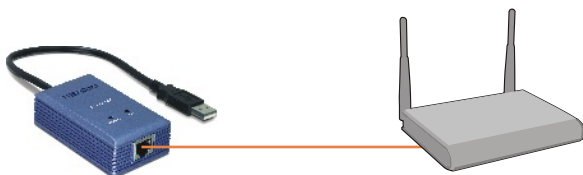


7. Klicken Sie auf **Yes** (Ja).



8. Klicken Sie auf **Finish** (Fertigstellen).

9. Verbinden Sie den Adapter über ein RJ-45-Kabel mit einem Umschalter, Router oder Kabel/DSL-Modem.



Ihre Installation ist beendet!

Q1: Can I connect or disconnect TU2-ET100 while the computer is on?

A1: Yes, you can connect or disconnect TU2-ET100 while the computer is on because the USB interface is Plug-and-Play compliant and hot-pluggable.

Q2: Windows is unable to recognize my hardware. What should I do?

A2: First, make sure your computer meets the minimum requirements as specified in Section 1 of this Quick Installation Guide. Second, try plugging the adapter into a different USB port.

Q3: Windows recognizes my new hardware, but I'm unable to connect to my network. What should I do?

A3: First, verify that the network cable is securely connected from your switch or router to your adapter. Second, verify that the LEDs on your adapter are lit. Third, verify that the TCP/IP settings are set to **Obtain an IP address automatically**.

Q4: How do I install this device on Windows 98SE and ME?

A4: Refer to the User Guide included on the Driver CD-ROM for installation instructions.

If you still encounter problems or have any questions regarding the **TU2-ET100**, please refer to the User's Guide included on the Driver CD-ROM or contact TRENDnet's Technical Support Department.

Certifications

This equipment has been tested and found to comply with FCC and CE Rules.

Operation is subject to the following two conditions:

- (1) This device may not cause harmful interference.
- (2) This device must accept any interference received. Including interference that may cause undesired operation.



Waste electrical and electronic products must not be disposed of with household waste. Please recycle where facilities exist. Check with you Local Authority or Retailer for recycling advice.



NOTE: THE MANUFACTURER IS NOT RESPONSIBLE FOR ANY RADIO OR TV INTERFERENCE CAUSED BY UNAUTHORIZED MODIFICATIONS TO THIS EQUIPMENT. SUCH MODIFICATIONS COULD VOID THE USER'S AUTHORITY TO OPERATE THE EQUIPMENT.



TRENDnet Technical Support

US • Canada

Toll Free Telephone: 1(866) 845-3673

24/7 Tech Support



Europe (Germany • France • Italy • Spain • Switzerland • UK)

Toll Free Telephone: +00800 60 76 76 67

English/Espanol - 24/7

Francais/Deutsch - 11am-8pm, Monday - Friday MET

Worldwide

Telephone: +(31) (0) 20 504 05 35

English/Espanol - 24/7

Francais/Deutsch - 11am-8pm, Monday - Friday MET

Product Warranty Registration

Please take a moment to register your product online.

Go to TRENDnet's website at <http://www.trendnet.com>

TRENDnet

3135 Kashiwa Street
Torrance, CA 90505
USA