



**Quick Start for Hardware
Installation
Avaya P332MF Stackable Switch**

10-300712
Issue 1
September 2005

Copyright 2005, Avaya Inc.
All Rights Reserved

Notice

Every effort was made to ensure that the information in this document was complete and accurate at the time of printing. However, information is subject to change.

Warranty

Avaya Inc. provides a limited warranty on this product. Refer to your sales agreement to establish the terms of the limited warranty. In addition, Avaya's standard warranty language as well as information regarding support for this product, while under warranty, is available through the following Web site: <http://support.avaya.com>.

Disclaimer

Avaya is not responsible for any modifications, additions or deletions to the original published version of this documentation unless such modifications, additions or deletions were performed by Avaya. Customer and/or End User agree to indemnify and hold harmless Avaya, Avaya's agents, servants and employees against all claims, lawsuits, demands and judgments arising out of, or in connection with, subsequent modifications, additions or deletions to this documentation to the extent made by the Customer or End User.

How to Get Help

For additional support telephone numbers, go to the Avaya support Web site: <http://support.avaya.com>. If you are:

- Within the United States, click the *Escalation Management* link. Then click the appropriate link for the type of support you need.
- Outside the United States, click the *Escalation Management* link. Then click the *International Services* link that includes telephone numbers for the international Centers of Excellence.

Standards Compliance

Avaya Inc. is not responsible for any radio or television interference caused by unauthorized modifications of this equipment or the substitution or attachment of connecting cables and equipment other than those specified by Avaya Inc. The correction of interference caused by such unauthorized modifications, substitution or attachment will be the responsibility of the user. Pursuant to Part 15 of the Federal Communications Commission (FCC) Rules, the user is cautioned that changes or modifications not expressly approved by Avaya Inc. could void the user's authority to operate this equipment.

Product Safety Standards

This product complies with and conforms to the following international Product Safety standards as applicable:

Safety of Information Technology Equipment, IEC 60950, 3rd Edition, or IEC 60950-1, 1st Edition, including all relevant national deviations as listed in Compliance with IEC for Electrical Equipment (IECEE) CB-96A.

Safety of Information Technology Equipment, CAN/CSA-C22.2 No. 60950-00 / UL 60950, 3rd Edition, or CAN/CSA-C22.2 No. 60950-1-03 / UL 60950-1.

One or more of the following Mexican national standards, as applicable: NOM 001 SCFI 1993, NOM SCFI 016 1993, NOM 019 SCFI 1998.

The equipment described in this document may contain Class 1 LASER Device(s). These devices comply with the following standards:

- EN 60825-1, Edition 1.1, 1998-01
- 21 CFR 1040.10 and CFR 1040.11.

The LASER devices used in Avaya equipment typically operate within the following parameters:

Typical Center Wavelength	Maximum Output Power
830 nm - 860 nm	-1.5 dBm
1270 nm - 1360 nm	-3.0 dBm
1540 nm - 1570 nm	5.0 dBm

Luokan 1 Laserlaite

Klass 1 Laser Apparät

Use of controls or adjustments or performance of procedures other than those specified herein may result in hazardous radiation exposures. Contact your Avaya representative for more laser product information.

Electromagnetic Compatibility (EMC) Standards

This product complies with and conforms to the following international EMC standards and all relevant national deviations:

Limits and Methods of Measurement of Radio Interference of Information Technology Equipment, CISPR 22:1997 and EN55022:1998.

Information Technology Equipment – Immunity Characteristics – Limits and Methods of Measurement, CISPR 24:1997 and EN55024:1998, including:

- Electrostatic Discharge (ESD) IEC 61000-4-2
- Radiated Immunity IEC 61000-4-3
- Electrical Fast Transient IEC 61000-4-4
- Lightning Effects IEC 61000-4-5
- Conducted Immunity IEC 61000-4-6
- Mains Frequency Magnetic Field IEC 61000-4-8
- Voltage Dips and Variations IEC 61000-4-11

Power Line Emissions, IEC 61000-3-2: Electromagnetic compatibility (EMC) – Part 3-2: Limits – Limits for harmonic current emissions.

Power Line Emissions, IEC 61000-3-3: Electromagnetic compatibility (EMC) – Part 3-3: Limits – Limitation of voltage changes, voltage fluctuations and flicker in public low-voltage supply systems.

Federal Communications Commission Statement

Part 15:

Note: This equipment has been tested and found to comply with the limits for a Class A digital device, pursuant to Part 15 of the FCC Rules. These limits are designed to provide reasonable protection against harmful interference when the equipment is operated in a commercial environment. This equipment generates, uses, and can radiate radio frequency energy and, if not installed and used in accordance with the instruction manual, may cause harmful interference to radio communications. Operation of this equipment in a residential area is likely to cause harmful interference in which case the user will be required to correct the interference at his own expense.

Canadian Department of Communications (DOC) Interference Information

This Class A digital apparatus complies with Canadian ICES-003.

Cet appareil numérique de la classe A est conforme à la norme NMB-003 du Canada.

European Union Declarations of Conformity



Avaya Inc. declares that the equipment specified in this document bearing the "CE" (*Conformité Européenne*) mark conforms to the European Union Electromagnetic Compatibility Directive (89/336/EEC) and Low Voltage Directive (73/23/EEC).

Copies of these Declarations of Conformity (DoCs) can be obtained by contacting your local sales representative and are available on the following Web site: <http://support.avaya.com>.

Japan

This is a Class A product based on the standard of the Voluntary Control Council for Interference by Information Technology Equipment (VCCI). If this equipment is used in a domestic environment, radio disturbance may occur, in which case, the user may be required to take corrective actions.

この装置は、情報処理装置等電波障害自主規制協議会（VCCI）の基準に基づくクラスA情報技術装置です。この装置を家庭環境で使用すると電波妨害を引き起こすことがあります。この場合には使用者が適切な対策を講ずるよう要求されることがあります。

To order copies of this and other documents:

Call: Avaya Publications Center
Voice 1.800.457.1235 or 1.207.866.6701
FAX 1.800.457.1764 or 1.207.626.7269

Write: Globalware Solutions
200 Ward Hill Avenue
Haverhill, MA 01835 USA
Attention: Avaya Account Management

E-mail: totalware@gwsmail.com

For the most current versions of documentation, go to the Avaya support Web site: <http://support.avaya.com>.

Contents

Chapter 1: Before you Start	5
Gathering Information	5
Defining the Installation	5
Preparing Contacts you might need	5
Preparing Installation Files	6
Preparing Needed Tools	6
Choosing the Installation Site	6
Building a stack	8
Stack Master election rules	10
Chapter 2: Unpack the Device	13
Equipment	13
Documentation	14
Avaya P330 Documentation and Utilities CD	15
Chapter 3: Mount the Device	17
Before you Install the P330 in a Rack	17
Chapter 4: Power Up	19
P330 AC version	19
P330 DC version	20
Chapter 5: Prepare for Configuration	23
Establishing a Console Connection	23
Assigning a P330 IP Stack Address	24
Establishing a Telnet Connection	25
Configuring the Switch	26
Basic configuration	26
Assigning the Stack IP Address	26
Avaya P330 Default Settings	27
Chapter 6: Device Manager	29
Overview	29
System Requirements	29
Configuring the Device Manager	30
Device Manager Commands	30
Running the Device Manager	30
Installing the Java Plug-in	32

Contents

Installing from the P330 Documentation and Utilities CD.	32
Install from the Avaya Web Site	33
Install from your Local Web Site	33
Installing the On-Line Help and Java Plug-In on your Web Site	33
Documentation.	34

Chapter 1: Before you Start

Before you install your Avaya Switch, prepare all the information, resources, and tools that you need during the installation process. Good preparation ensures a smooth installation with the least amount of interruption.



WARNING:

ONLY TRAINED AND QUALIFIED PERSONNEL SHOULD BE ALLOWED TO INSTALL OR REPLACE THIS EQUIPMENT.



WARNING:

EQUIPMENT MUST BE CONNECTED TO AN EARTHED MAINS SOCKET-OUTLET.

Gathering Information

Defining the Installation

The P330 can be installed in several different configurations. Before you start the installation, find out what configuration is needed for your site.

Preparing Contacts you might need

Ensure that you have the names and phone numbers of any people you might need to contact at the installation site. This list might include the people responsible for:

- Network architecture
- System administration
- Site security
- Site deliveries

Preparing Installation Files

Ensure that you load the latest versions of the firmware file for the P330. You can download the firmware file needed for your installation from the Avaya Support Web site, at <http://support.avaya.com>.

Preparing Needed Tools

Prepare the tools you need to mount the P330, according to the [Table 1](#):

Table 1: Mounting Tools

If you need to mount on...	Prepare these tools
Rack	Phillips head screwdriver

Choosing the Installation Site

Ensure that the location where you install your P330 fulfills the following requirements:

- Cables are away from sources of electrical noise such as:
 - radio transmitters
 - broadcast amplifiers
 - power lines
 - fluorescent light fixtures
- Water or moisture cannot enter the chassis.
- Air can flow freely around all sides of the chassis.
- The vents on the sides of the chassis are not blocked.

- The environmental conditions match the requirements listed in [Table 2](#).

Table 2: Environmental Requirements

Condition	Acceptable values
Ambient temperature	23° to 122°F (-5° to 50°C)
Relative humidity	5-95% non-condensing
Weight support	

- The power source matches the specifications shown in [Table 3](#):

Table 3: Power Requirements

Power consumption	150 W
AC Input voltage	100 to 240 VAC, 50 to 60 Hz
AC Input current	A
DC Input voltage	-36 to -72 VDC
DC Input current	A max

See the *Avaya P333T User's Guide*, 03-300148, for additional information on environmental requirements.

Building a stack

Follow the guidelines in this section in order to build a working stack using any combination of the following devices:

- P330 series
 - P330-ML series
 - G700
 - P330 series
1. Add only a single box at a time to an existing stack.



Important:

The stack master (also called "stack IP Agent") may fail to preserve existing "stack configuration" if you will add more than a single device to an existing stack at a time.

- After adding the first box, wait until the stack is functioning fully before adding the next device.
2. Refer to [Table 4](#) to see which firmware versions can be used in mixed stacks. For example, if you wish to add a P332G-ML to a stack with P330 4.5 switches, the P332G-ML switch must have firmware version 4.5.8.
 - Upgrade/downgrade the firmware of switches that do not match version in the table.



Tip:

It is highly recommended to upgrade/downgrade before connecting the added box to an existing stack.

- Ensure switches of the same type have the same firmware version

Table 4: Firmware Versions Matrix

	Required version						
	Stack without C360					Stack with C360	
Switch	3.11	3.12	4.0	4.1	4.5	4.3	4.5
P333T	3.11.0	3.12.1	4.0.17	4.1.6	4.1.6	N/A	N/A
P334T	3.11.0	3.12.1	4.0.17	4.1.6	4.1.6	N/A	N/A
P333R	3.11.0	3.12.0	4.0.9	4.1.5	4.1.5	N/A	N/A
P333R-LB	3.11.0	3.12.3	4.0.6	4.1.5	4.1.5	N/A	N/A
P332MF	3.11.0	3.12.1	4.0.17	4.1.6	4.1.6	N/A	N/A
P333T-PWR	3.11.0	3.12.1	4.0.17	4.1.6	4.1.6	N/A	4.1.6
G700	3.11.0	3.12.1	4.0.17	4.1.6	4.1.6	N/A	4.1.6
P334T-ML	3.11.16	3.11.16	4.0.15	4.1.3	4.5.8	N/A	N/A
P332G-ML	3.11.15	3.11.15	4.0.15	4.1.3	4.5.8	N/A	4.5.8
P332GT-ML	3.11.15	3.11.15	4.0.15	4.1.3	4.5.8	N/A	4.5.8
C363T	N/A	N/A	N/A	N/A	N/A	4.3.12	4.5.14
C364T	N/A	N/A	N/A	N/A	N/A	4.3.12	4.5.14
C363T-PWR	N/A	N/A	N/A	N/A	N/A	4.3.12	4.5.14
C364T-PWR	N/A	N/A	N/A	N/A	N/A	4.3.12	4.5.14

Note:

Position the C360 switches either at the top or bottom of the stack to ensure mechanical stability.

Stack Master election rules

[Table 5](#) lists the switches in order of election priority from highest to lowest.

Note:

If there are two switches with the same firmware version and the same election priority, the switch positioned lower in the stack becomes Stack Master.

Table 5: Stack Master election priority

Switch type	Switch mode	Stack Master election priority
C363T, C363T-PWR	Layer 2	1
C364T, C364T-PWR	Layer 2	2
C363T, C363T-PWR	Layer 3	3
C364T, C364T-PWR	Layer 3	4
P332GT-ML	Layer 2	5
P332G-ML	Layer 2	6
P334T-ML	Layer 2	7
P332GT-ML	Layer 3	8
P332G-ML	Layer 3	9
P334T-ML	Layer 3	10
G700	N/A	11
P333R, P333R-LB	Layer 2	12
P333T, P334T, P332MF	N/A	12
P333T-PWR	N/A	13
P333R, P333R-LB	Layer 3	14
P333R-LB	Webswitch	15

Figure 1: Example stack elections

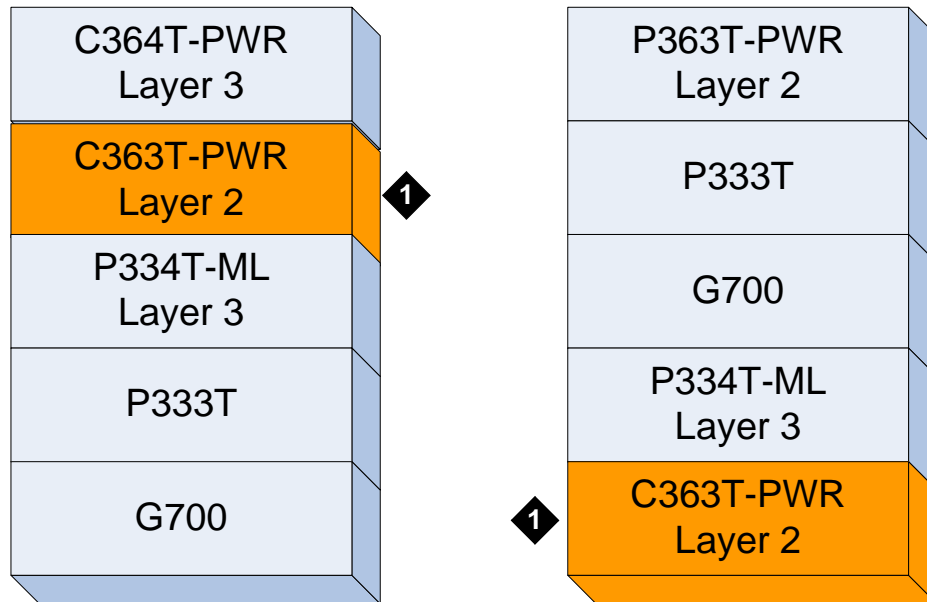


Figure notes:
1. Stack Master

Before you Start

Chapter 2: Unpack the Device


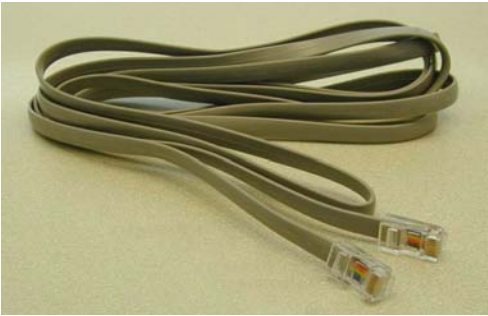
⚠ ELECTROSTATIC ALERT:

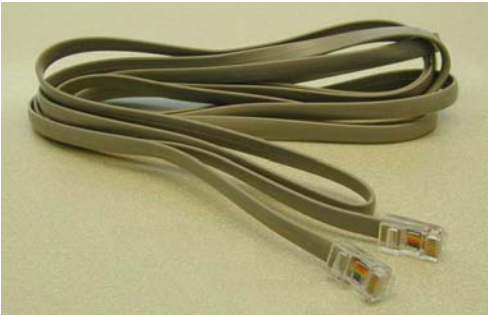
Wear an anti-static wrist ground strap whenever you handle components of a P330. Connect the strap to an approved ground, such as an unpainted metal surface.

Equipment

Open the box that contains the P330, and ensure that it contains the following components and accessories:

- One Avaya P332MF Switch.
- One Accessory Kit that contains:

One 115V 3 Wire Power Cable	
One RJ45 to RJ45 Flat Cable	



Unpack the Device

One RJ45 to DB9F Adapter



One DB25M Adapter



Four (4) 5/16" Round Head Screws



Four (4) Washers



Four (4) stand-off feet



Documentation

- Avaya P332MF Quick Start Guide (this document)
- Avaya P330 Release Notes

- Avaya P330 Documentation and Utilities CD (see detail below)
- Avaya Communication Warranty and License Agreement

Avaya P330 Documentation and Utilities CD

The CD contains the latest User's Guides for the Avaya P330 stackable switches and files for use with the Embedded Web Manager.

- User's Guides

You can view and print these Guides using Adobe® Acrobat® Reader.

- Auxiliary Files for use with the Embedded Web Manager

Please refer to the documentation for information on how to use these files.

- Java plug-in
- Help files

- Adobe Acrobat Reader

This application allows you to view and print the User's Guides on this CD.

Unpack the Device

Chapter 3: Mount the Device

You can mount the P330 in a rack.

The P330 chassis fits in most standard 19-inch racks. It is 2U (3.5", 88 mm) high.

Before you install the P330 in a Rack

- Disconnect all cables from the unit before proceeding with the rack installation.
- When installing P330 in a rack, ensure that the equipment is positioned such that it will not cause the rack to become unstable or tip over.
- Ensure that the combination of equipment in the rack will not cause an overload or overcurrent condition on the power strip being used and/or the customer's branch circuit.
- The P330 units weigh a maximum of 15 pounds (6.8 kg). Be careful when installing or removing the P330 product from the rack.
- If a power strip is being used in the rack, ensure that it has a reliable earth connection. If the P330 equipment will be plugged directly into a wall outlet, ensure that there is a reliable ground connection at the outlet.
- Ensure that the internal rack ambient temperature is within the operating specification limits of the P330.
- Ventilation for the P330 is from side to side. Ensure that there is adequate space on each side of the P330 equipment when installed in the rack to allow sufficient airflow.

Place the P330 in the rack as follows:

Note:

The P333T is used to illustrate this procedure which is the same for all P330 switches.

1. Snap open the hinged ends of the unit's front panel to reveal the screw holes. Refer to [Figure 2](#) and [Figure 3](#).

Figure 2: Closed hinged end

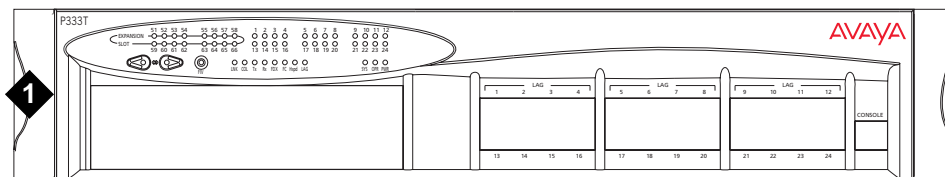


Figure notes:

1. Closed hinged end

Figure 3: Open hinged end

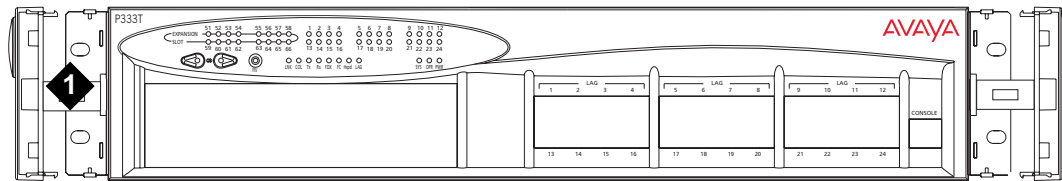


Figure notes:

1. Open hinged end

-
2. Position the unit in the rack.
 3. Secure the unit to the rack, taking care not to overtighten the screws.
 4. Snap closed the hinged ends of the front panel.



Tip:

You can now safely connect the cables to the unit.

Chapter 4: Power Up

Connecting the P330 to the main electrical supply provides power to the switch.



VOLTAGE ALERT:

To isolate the switch completely, you must disconnect all power connections: AC plug or DC terminal block and DC BUPS power.

P330 AC version

1. Insert the power cord into the power connector (BUPS or Power Supply) on the rear of the unit.

Figure 4: P330 AC version rear panel

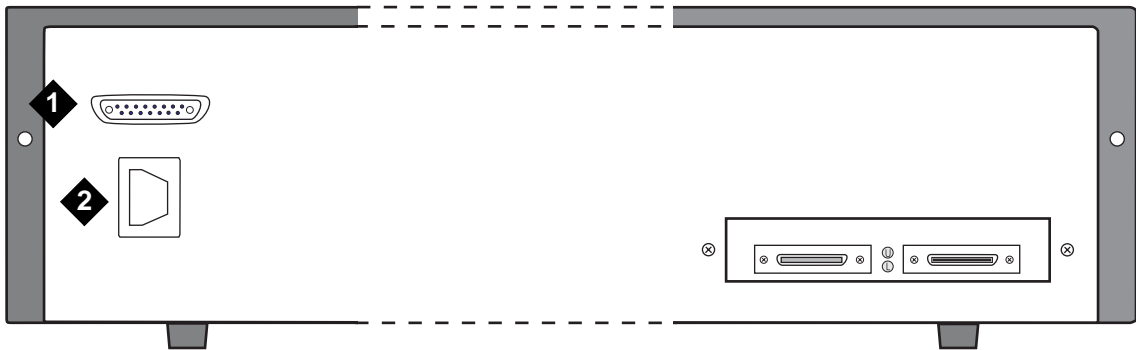


Figure notes:

1. BUPS connector
2. AC connector

-
2. Insert the other end of the power cord into the electricity supply or the BUPS connector.
 - The unit powers up and performs a self test procedure. The LEDs flash at regular intervals after the self-test procedure is completed successfully.

P330 DC version

- ⚠ VOLTAGE ALERT:**
Before performing any of the following procedures, ensure that DC power is OFF.
- ⚠ CAUTION:**
This product is intended for installation in restricted access areas and is approved for use with 18 AWG copper conductors only. The installation must comply with all applicable codes.

Figure 5: P330 DC version rear panel

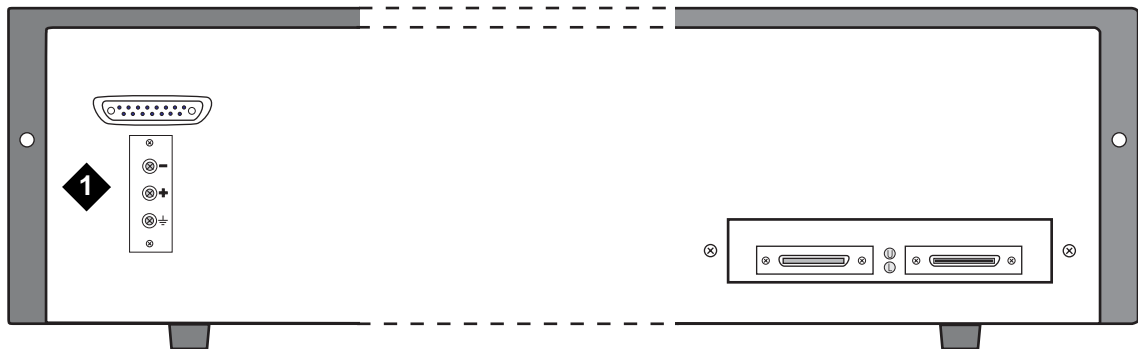


Figure notes:

1. DC input terminal block

1. Connect the power cable to the switch at the input terminal block on the rear of the unit.
 - The terminals are marked “+”, “-“ and the IEC 5019a Ground symbol.
 - The size of the three screws in the terminal block is M3.5.
 - The pitch between each screw is 9.5mm.
2. Attach the appropriate lugs at the wire end of the power supply cord.
3. Wire the DC power supply to the terminal block.

The unit powers up and performs a self test procedure. The LEDs flash at regular intervals after the self-test procedure is completed successfully.

- ⚠ VOLTAGE ALERT:**
The proper wiring sequence is:
1. ground to ground
 2. positive to positive

3. negative to negative



WARNING:

Always connect the ground wire first and disconnect it last.

Power Up

Chapter 5: Prepare for Configuration

This chapter provides information on preparing the P330 for configuration, and discusses the following topics:

- [Establishing a Console Connection](#)
- [Assigning a P330 IP Stack Address](#)
- [Establishing a Telnet Connection](#)
- [Configuring the Switch](#)

Establishing a Console Connection

This section describes the procedure for establishing switch access between a terminal and the Avaya P330 switch over the serial port provided on the front panel of the P330 (RJ-45 connector labeled “Console”). For information on the console port pin assignments, refer to the *Avaya P333T User Guide*.

Note:

[Figure 6](#) shows the front panel of the P333T. The location of the Console port is the same on all P330 switches.

Figure 6: Avaya P330 Console Port



Figure notes:

1. Console port

Prepare for Configuration

1. Use the serial cable supplied to attach the RJ-45 console connector to the Console port of the active P330 switch. Connect the DB-9 connector to the serial (COM) port on your PC/terminal.
 - The master P330 is indicated by the SYS LED being ON.
2. Ensure that the serial port settings on the terminal are:
 - 9600 baud
 - 8 bits
 - 1 stop bit
 - no parity.
 - If you reset or powered up the switch after connecting and configuring the terminal, `Welcome to P330` appears followed by the Login Name prompt.
 - If the login prompt does not appear, press a key on the terminal.
3. Enter the default login: `root`.
 - The Password prompt appears
4. Enter the user level password: `root`.
 - You can now establish a connection to the Router or the Master switch (indicated when the SYS front panel LED is ON) using the Session commands and begin the configuration of module, stack, or router parameters.

Assigning a P330 IP Stack Address

Note:

All P330 switches are shipped with the same default IP address. You must change the IP address of the master P330 switch in a stack in order to guarantee that the stack has its own unique IP address in the network.

The network management station or a workstation running a Telnet client can establish communications with the stack once this address had been assigned and the stack has been inserted into the network. Use the CLI to assign the P330 stack an IP address and net mask.

To assign a P330 IP stack address:

1. Establish a serial connection by connecting a terminal to the master P330 switch of the stack.
2. When prompted for a Login Name, enter the default name `root`
3. When you are prompted for a password, enter the password `root`. You are now in Supervisor Level.

4. At the prompt, type:
`set interface inband <vlan> <ip_address> <netmask>`
 Replace <vlan>, <ip_address> and <netmask> with the VLAN, IP address, and net mask of the stack.
5. Press Enter to save the IP address and net mask.
6. At the prompt, type `reset`. Type `y` and press Enter to reset the stack. After the Reset, log in again as described above.
 - At the prompt, type `set ip route <dest> <gateway>` and replace <dest> and <gateway> with the destination and gateway IP addresses.

Establishing a Telnet Connection

Perform the following steps to establish a Telnet connection to the P330 for configuration of Stack or Router parameters. You can Telnet the Stack Master IP address:

1. Connect your station to the network.
2. Verify that you can communicate with the Avaya P330 by pinging the IP of the Avaya P330. If there is no response using ping, check the IP address and default gateway of both the Avaya P330 and the station.



Tip:

The Avaya P330 default IP address is 149.49.32.134 and the default subnet mask is 255.255.255.0.

3. From the Microsoft Windows taskbar of your PC click **Start** and then **Run** (or from the DOS prompt of your PC), then start the Telnet session by typing: `telnet <P330_IP_address>`
 For example: `telnet 149.49.32.134`
4. If the IP Address in the Telnet command is the IP address of the stack, then connection is established with the Switch CLI entity of the Master module.
 - The “Welcome to P330” screen appears
5. Enter the default name `root` at the Login name prompt.
6. Enter the User Level password `root` in lower case letters (do *not* use uppercase letters) at the Password prompt.
 - The User level prompt will appear when you have established communications with the Avaya P330.
 You can now configure the Avaya P330 stack and change its IP address.

Configuring the Switch

This section describes the procedures for the first-time configuration of the Avaya P330. The factory defaults are set out in detail in the tables included in this chapter.

You may configure the Avaya P330 using the text-based Command Line Interface (CLI), the built-in Avaya P330 Device Manager or Avaya Integrated Management.

For instructions on the CLI, see the *Avaya P330 Reference Guide*.

For instructions on the use of the graphical user interfaces, refer to the *P330 Device Manager User Guide* on the *Avaya P330 Documentation and Utilities CD*.

Basic configuration

To connect a PC terminal or VT-100 terminal to the Avaya P330

1. If you are using a PC, initiate a VT-100 terminal emulation session using an application such as Windows® HyperTerminal.
 2. Press Enter.
 3. Type the User name `root` when prompted and press Enter.
 4. Type the default password `root` when prompted and press Enter.
 - The P330-N(super)# prompt appears
 - N is the number of the switch in the stack.
-

Assigning the Stack IP Address



Tip:

Commands are shown as follows: `set interface inband;`
parameters which you need to enter are shown in `<>` as follows: `<vlan>`

1. Type `set interface inband <vlan> <ip_address> <netmask>`, replacing `<vlan>`, `<ip_address>` and `<netmask>` with the VLAN, IP address and net mask of the stack and press Enter.
2. At the P330-N(super)# prompt, type `reset` and press Enter to reset the stack.
3. After the Reset, perform login again as described above.
 - The P330-N(super)# prompt appears.
4. Type `set ip route <destination> <gateway>`, replacing `<destination>` and `<gateway>` with the destination and gateway IP addresses.

5. Press Enter to save the destination and gateway IP addresses.

Avaya P330 Default Settings

If you wish to change the default parameters shown and configure the mandatory parameters, we recommend that you use the Command Line Interface (CLI).

For further information, please refer to Chapter 6 of the Avaya P330 User's Guide.

The default settings for the Avaya P330 switch and its ports are determined by the Avaya P330 firmware. These default settings are subject to change in newer versions of the Avaya P330 firmware. See the *P330 Release Notes* for the most up-to-date settings.

Table 6: Default Switch Settings

Function	Default Setting
IP address	149.49.32.134
BootP mode	Never
Subnet Mask	255.255.255.0
Default gateway	0.0.0.0
Management PC SLIP IP Address	192.168.10.2
Management VLAN ID	1
Spanning tree	Enabled
TFTP Mode	Limited
TFTP Server	0.0.0.0
TFTP File Name	viisa
SNMPv1 communities:	
Read-only	Public
Read-write	Public
Trap SNMP	Public
SNMP authentication trap	Disabled
CLI timeout	15 Minutes
User Name/Password	root/root

Prepare for Configuration

Table 7: Default Port Settings

Parameter	Default Setting
Port speed and duplex mode	<ul style="list-style-type: none">● 10/100-TX ports: Auto-negotiation● 100Base-FX ports: 100 Mbps full duplex● 1000Base-X ports: 1000 Mbps full duplex
Flow Control	<ul style="list-style-type: none">● 10/100 and 100 Mbps: Disabled● 1000 Mbps: Disabled (no pause)
Backpressure	<ul style="list-style-type: none">● 10/100: Enabled (when in half duplex mode)● 100Base-FX & 1000 Mbps: Not applicable
Auto-negotiation	<ul style="list-style-type: none">● 10/100-TX ports: Enabled● 100Base-FX ports: Not applicable● 1000Base-X ports: Enabled
Administration State	Enabled
Port VLAN ID	1
Tagging mode	Clear
Port priority	Regular



Tip:

Functions operate in their default settings unless configured otherwise.

Chapter 6: Device Manager

This chapter describes the installation procedures for the Device Manager of the Avaya P330.

Overview

The Device Manager provides the following:

- Managing and monitoring Power over Ethernet.
- Device Configuration - Viewing and modifying the different device configurations.
- Virtual LANs - Viewing and editing Virtual LAN information.
- Link Aggregation Groups (LAGs) - Viewing and editing LAG information.
- Port Redundancy - Setting port redundancy for ports in a P330 Switch.
- Port Mirroring - Setting up port mirroring for ports in a P330 Switch.
- Trap Managers Configuration - Viewing and modifying the Trap Managers Table.
- Switch Connected Addresses - View devices connected to selected ports. Port Security.
- Intermodule Redundancy
 - One pair per stack.
 - Also operates as a result of a module fault, for example, power failure.

System Requirements

Minimum hardware and operating system requirements are:

- Pentium II 400 Mhz-based computer with 128 Mb of RAM.
- Screen resolution of 1024 x 768 pixels.
- Microsoft Internet Explorer 5 or higher.
- Microsoft Windows 2000 Workstation or Windows XP.
- Sun Microsystems Java plug-in (supplied on the “Documentation and Utilities” CD). Refer to the Release Notes for the exact version of the Java plug-in.

Configuring the Device Manager

You can configure several Device Manager parameters using the CLI. These parameters include the time-out and retries parameters, the location of the Web server that provides the help files for the Device Manager, and the Java plug-in required for running the Device Manager.

Device Manager Commands

The following Device Manager commands are available.

In order to...	Use the following command...
Set the SNMP retries parameter	set snmp retries
Set the SNMP time-out parameter	set snmp time-out
Set the location of the Web server with the help files and the Java plug-in	set web aux-files-url
Display the SNMP retries parameter	show snmp retries
Display the SNMP time-out parameter	show snmp time-out
Display the URL of the Web server with the help files and the Java plug-in	show web aux-files-url

Running the Device Manager

Note:

You should assign an inband or out-of-band interface IP address to the switch before beginning this procedure.

To run the Device Manager:

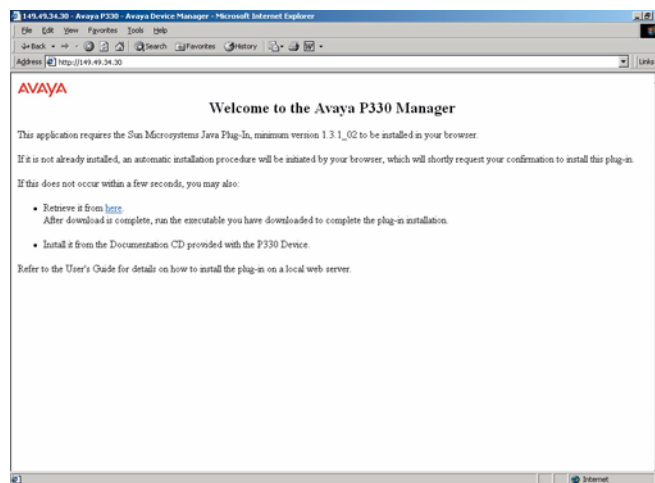
1. Open your browser.
2. Enter the URL of the switch in the format `http://aaa.bbb.ccc.ddd` where `aaa.bbb.ccc.ddd` is the inband or outband interface IP address of the switch.

- The user name is “root”.
- The default password for read-only access is “root”.
- The default passwords for read-write access is “root”.

Note:

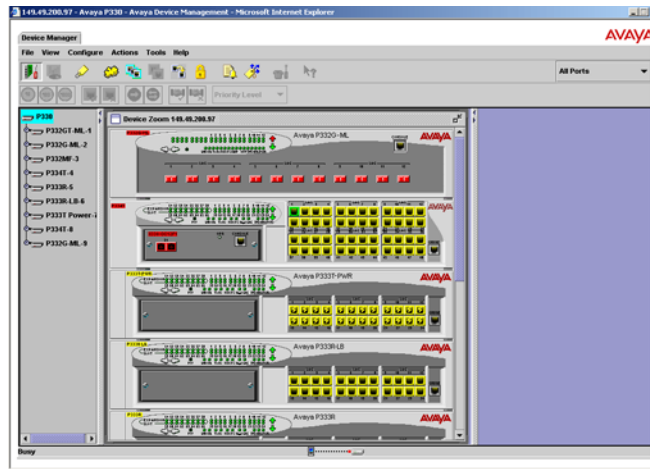
The P330 Device Manager passwords are the same as those of the CLI. If you change the passwords of the CLI then those passwords become active for the Device Manager as well. For further information on the passwords, refer to the *Avaya P330 Installation and Configuration User Guide*.

The welcome page is displayed.

Figure 7: The Welcome Page

If you have the Java plug-in installed, the Device Manager automatically opens in a new window, shown in [Figure 8](#).

Figure 8: Device Manager



3. If you do **not** have the Java plug-in installed, follow the instructions on the Welcome page for a variety of options to install the plug-in (see [Installing the Java Plug-in](#)).

Installing the Java Plug-in

If the network manager has configured the system, the plug-in should be installed automatically.

Note:

Ensure that Java or JavaScript is enabled on your Web browser. Please refer to your browser on-line help or documentation for further information.

If the plug-in is not installed automatically, then you have three options for installing it manually:

- [Installing from the P330 Documentation and Utilities CD](#)
- [Install from the Avaya Web Site](#)
- [Install from your Local Web Site](#)

Installing from the P330 Documentation and Utilities CD

To install from the P330 Documentation and Utilities CD:

1. Close all unnecessary applications on your PC.
2. Insert the *Avaya P330 Documentation and Utilities* CD in the CD drive.
3. Open Windows Explorer.

4. Browse to the **embweb-aux-files**\ folder on the CD.
5. Double-click **plugin_a_b_c.exe** (a, b and c are the version numbers of the plug-in).
6. Follow the on-screen instructions.

Install from the Avaya Web Site

Click the link in the Welcome page labelled “Retrieve it from [here](#)”.

Install from your Local Web Site

Click the appropriate link in the Welcome page.

Note:

This option is only available if the network manager has placed the files on the local Web server.

Installing the On-Line Help and Java Plug-In on your Web Site



Tip:

This procedure is optional.

Copying the help files and Java plug-in to a local Web server allows users to access the on-line help for the Device Manager and enables automatic installation and maintenance of the Java plug-in the first time the user tries to manage the device.

1. Copy the `emweb-aux-files` directory from the “Avaya P330 Documentation and Utilities” CD to your local Web server. Refer to your Web server documentation for full instructions.
2. Define the URL in the P330 using the following CLI command:
`set web aux-files-url //IP address/directory name`
where `//IP address/directory name` is the location of the directory from the previous step.

Documentation

The Device Manager comes with a detailed User's Guide including a Glossary of Terms and an overview of Data Communications concepts.