

User Guide

Sprint 4G Desktop Modem



MOTOROLA CPEi25150

www.sprint.com

©2009 Sprint. SPRINT and the logo are trademarks of Sprint. Other marks are the property of their respective owners.

12/3/09



Table of Contents

Section 1: Getting to Know Your Motorola CPEi 25150	1
Introduction	1
Powerful Features in a Single Unit	2
Your Motorola CPEi 25150 4G Desktop Modem	2
Front of Modem	2
Side Panel	3
Operating Information	3
Section 2: Installation and Setup	4
What's in the Box?	4
Installing Your 4G Desktop Modem	5
Initial Configuration	6
Before You Begin Configuration	6
User Interface Overview	6
Logging In to the Modem	8
Setup Wizard and Authentication	8
Section 3: Basic Configuration	10
Personalize Menu	10
Password Tab	11
Device Time Tab	11
Device Name Tab	11
Restore Factory Settings Tab	11
Internet Menu	12
WiMAX Security Tab	12
Internet Protocol Tab	13
Firewall Tab	13
Dynamic DNS Tab	14
Status Menu	14
Network Tab	14
Section 4: Advanced Configuration	15
Port Forwarding Menu	15
Basic Tab	16
Forwarding Tab	16
Local Address Menu	17
DHCP Server Tab	18
Lease Status Tab	19
Lease Reservation Tab	19
Control Panel Menu	20
Software Tab	20
Certificate Tab	21
System Tab	21
About Tab	21

- Section 5: Configuring TCP/IP** 22
 - Configuring TCP/IP in Windows 2000 22
 - Configuring TCP/IP in Windows XP 26
- Section 6: Troubleshooting** 30
 - LED indicators are Off 30
 - A Computer Cannot Log On to the Modem 30
 - Cannot Connect to the Internet 30
 - Additional Troubleshooting Help 30
- Section 7: Important Safety and Legal Information** 31
 - RF Exposure Compliance and Guidelines Operating Instructions 31
 - FCC Regulatory Information 31
 - Industry Canada Statement 32
 - Caring for the Environment 32
 - Disposal of Motorola Equipment in EU Countries 32
 - Disposal of Motorola Equipment in Non-EU Countries 32
 - CMM Disclosure 33
 - Copyrights and Trademarks 33
 - Notice 33
 - Copyrights 33
 - Usage and Disclosure Restrictions 34
 - Trademarks 34

Section 1: Getting to Know Your Motorola CPEi 25150

Introduction

Thank you for purchasing the Motorola CPEi 25150 4G desktop modem. The CPEi 25150 allows you to connect to the wireless world easily and seamlessly without complicated installation and setup procedures.

The CPEi 25150 4G desktop modem provides:

- **Convenience** – with easy plug and play functionality. Flexible connectivity. Compact design.
- **Performance** – dual integrated antennas, optimized for rich indoor multipath environments. Best in Class Radio Performance. Reliable indoor coverage. High throughput.
- **Control** – remote management capability allows easy detection and authentication once the unit is setup. Robust security.

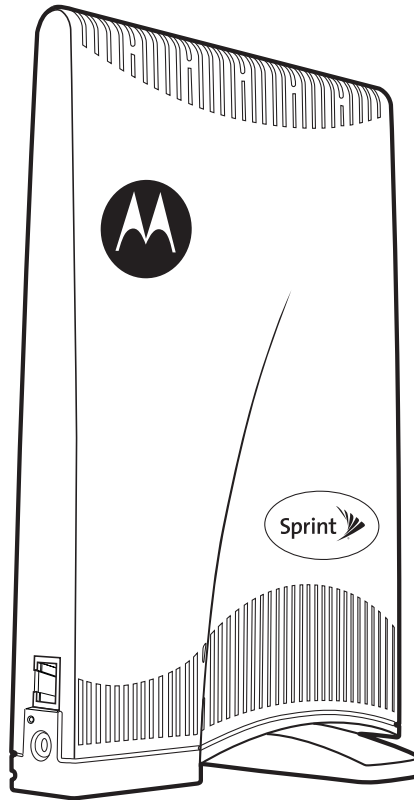


Figure 1: CPEi 25150 4G Desktop Modem

This product is subject to change. Not all features described in this Sprint 4G Desktop modem user guide are available on all models.

For the most recent documentation, visit the Product Documentation page on www.motorola.com.

Powerful Features in a Single Unit

The CPEi 25150 4G desktop modem provides the following features:

- WiMAX Authentication
- WAN DHCP Client
- LAN DHCP Server
- Router Functions
- Firewall Protection
- Port Forwarding

Your Motorola CPEi 25150 4G Desktop Modem

Front of Modem

The modem contains an array of five green LED indicators at the top of the unit. The LEDs indicate the status of the unit and signal strength for easy adjustment during setup.

LED Indicator Interface

Item	Description
Power Status	The LEDs are: On - power to the modem is on. Off - power to the modem is off.
Initializing Status	The center LED flashes when the modem is initializing.
Signal Strength	If all LEDs on the bar are lit, full signal is being received. If all LEDs are off, the modem is unplugged. LEDs will display a chase pattern when the device is attempting to locate and connect to the network.

Note: There is no reset button on this device. If you want to reset the modem, pull out the power cord and plug it in again.

Side Panel

The side panel of the unit contains the Ethernet Port, the Power Connection Port, and a Ethernet Port LED.

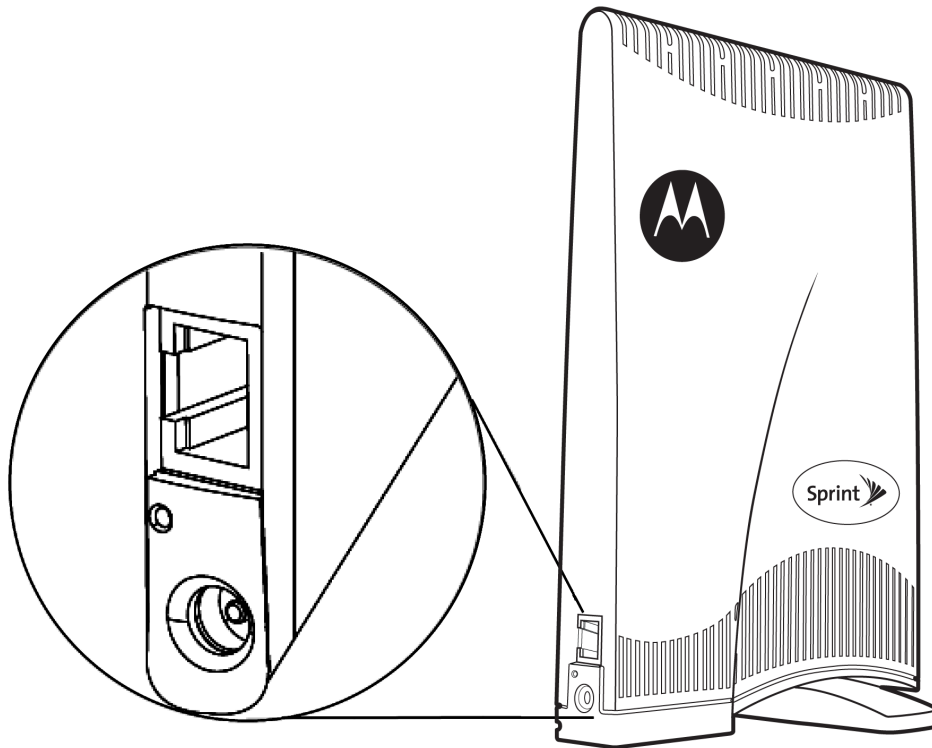


Figure 2: CPEi 25150 Side Panel

Side Panel Ports	Description
Ethernet	Ethernet Port
Power	AC Power Connector
Ethernet LED	The LED is: On - Ethernet Port is connected. Off - Ethernet Port is not connected. Blinking in 5-10 second intervals - the Ethernet cable is not connected to the computer.

Operating Information

Operating temperature for this unit is 0-40°C (32-104°F)

AC Power Rating for this unit is:

- 110 ~ 240 AC

Section 2: Installation and Setup

- ◆ What's in the Box? (page 4)
- ◆ Installing Your 4G Desktop Modem (page 5)
- ◆ Initial Configuration (page 6)

What's in the Box?

Before you begin installation, check that you have received the following items with your modem:

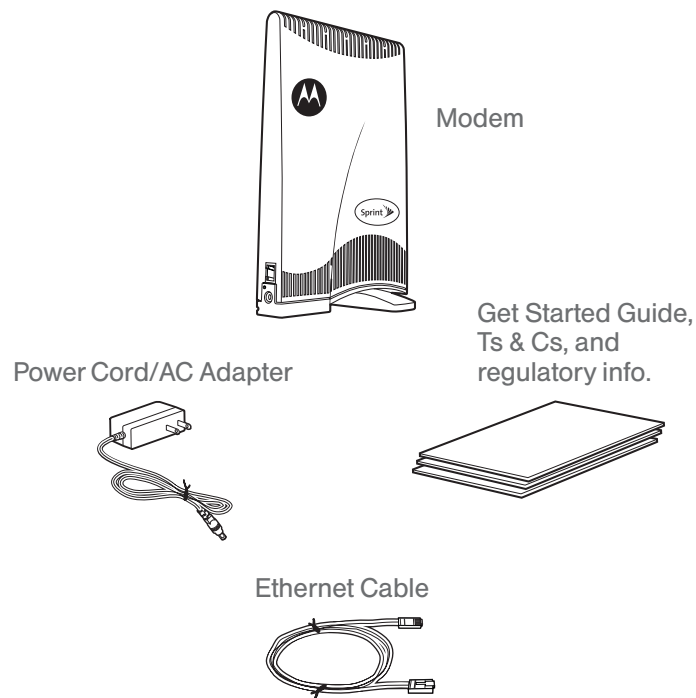


Figure 3: Inbox Contents

CPEi 25150 Box Contents

Item	Description
Modem	CPEi 25150 4G desktop modem unit
Power Cord/AC Adapter	Power cord that connects the modem to an electrical outlet
Ethernet Cable	Cable to connect the Ethernet port on your modem to your PC or laptop computer ethernet port
Get Started Guide, Ts & Cs, and regulatory info.	Guide to demonstrate the setup and initial Web connection; legal documentation

Installing Your 4G Desktop Modem

Perform the following tasks before attaching the power cord or powering up the unit:

- Rotate the base of the modem to be in a perpendicular position.
- Connect one end of the Ethernet cable to the Ethernet port of the modem. Stand the modem vertically on a flat surface.
- Connect the other end of the same Ethernet cable to an Ethernet port on your PC or laptop computer.
- Plug the power cord/AC adapter into an AC power outlet.
- The modem will automatically turn on.
- Connect the power adapter to the power connector on the side of the unit.

Note: Do NOT mount the horizontally and do NOT block the air ventilation holes at the top of the unit.

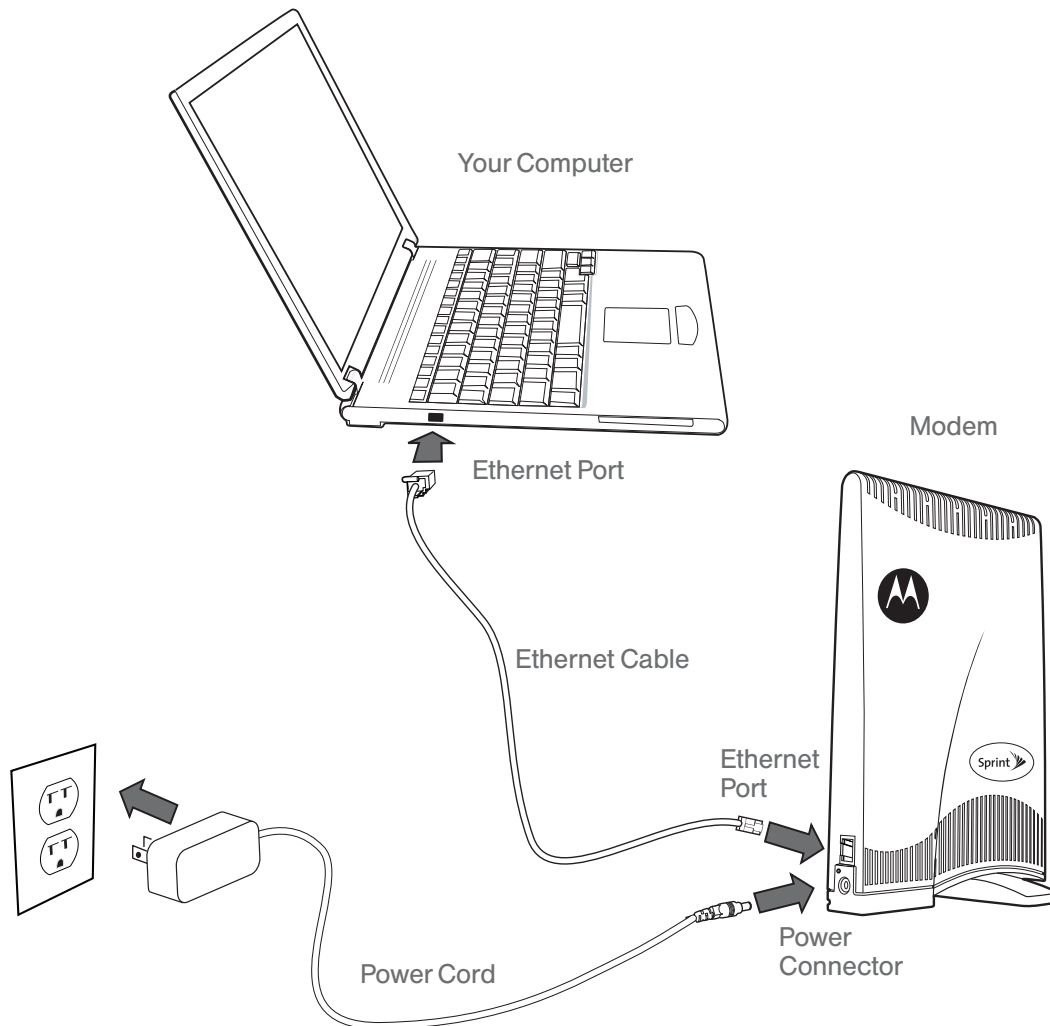


Figure 4: Installation Diagram

Initial Configuration

Before You Begin Configuration

Some settings on your computer must be verified or changed to ensure that your computer configuration can support the CPEi 25150 desktop modem.

- Call Sprint to confirm that your modem is activated.
- Verify that the IP address and DNS settings are automatically generated in your Local Area connection of your Internet Protocol (TCP/IP) properties. Refer to the chapter titled “Configuring TCP/IP” for information on how to do this.
- Ensure you know which protocol you will need to enter in the Setup Wizard procedure. This will either be EAP-TLS or EAP-TTLS. If EAP-TTLS is to be used, Sprint will provide you a Username and Password.

User Interface Overview

A Web-based Graphical User Interface (GUI) is used to configure the features of your modem. The top portion of the window displays buttons for the six main menus available in the interface: **Personalize**, **Internet**, **Status**, **Port Forwarding**, **Local Address**, and **Control Panel**. Each active menu contains varying tabs to control specific features. In the example below, the **Personalize** menu contains tabs for **Password** (shown), **Device Time**, **Device Name**, and **Restore Factory Settings**.

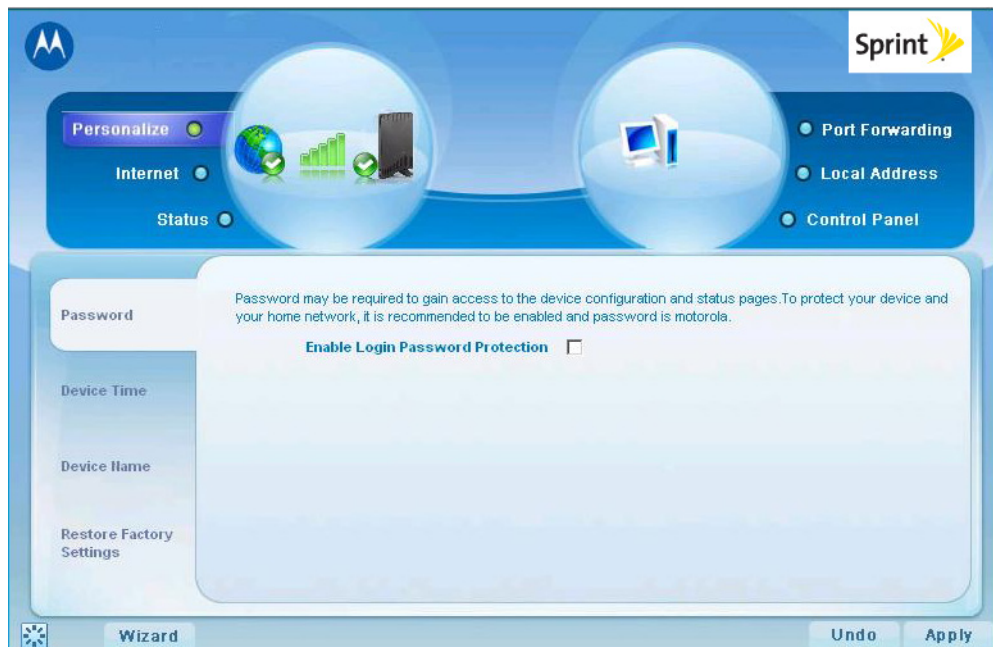


Figure 5: Main Menu Sample

There are six main menus in the GUI:

Menu Tab	Description
Personalize	Use this menu to set up your password, device time and device name. You can also abandon your personal settings by clicking Restore Factory Settings .
Internet	Use this menu to configure internet connection settings, including Authentication, Protocol, Firewall, and Dynamic DNS.
Status	Use this menu to display network status, including WiMAX, Internet, LAN, and Device Information.
Port Forwarding	Use this menu to enable Universal Plug and Play (UPnP) Internet Gateway Device (IGD) profile to allow certain Windows applications to setup the port forwarding rule dynamically when NAT is enabled on this device.
Local Address	Use this menu to display the IP Address and netmask address in the local network.
Control Panel	Use this menu to manage the device software.

The following buttons appear at the bottom of each configuration page:

Button	Function
Apply	Saves your changes. If you restart your modem without saving your changes, all changes are lost. After the device restarts, the last saved configuration is used.
Undo	Clears your changes on the current page and returns to the main menu. Once you click Apply , the Undo button will NOT clear your changes.
Next	Confirms the current setting and moves on to the next screen.
Refresh	Manually updates current status page.
Auto Refresh	Updates automatically without needing you to refresh manually.
Wizard	Starts Setup Wizard manually if your modem did not run the setup program automatically.

Note: Illustrations in this manual containing an image of what you see on your computer screen are for reference purposes only. Values shown in the illustrations in this manual may be different from what you see on your computer screen.

Logging In to the Modem

Use the following procedure to log in to the modem:

1. On a computer that is connected to the modem, open a Web browser.
2. Enter the IP address: <http://192.168.15.1> into Address field in order to gain access to your modem.
– or –

In the Address or Location field, type <http://mywimax> and press **Enter** to display the login screen. (You must enter the period [.] after the address to access the login screen.)

If you cannot access the modem, refer to “Section 5: Configuring TCP/IP” on page 22 for more information.

3. The **Welcome to Motorola WiMAX CPE** screen will be displayed and will prompt you for a password.
4. In the Password field, type the password (default is **motorola**).
5. Click **Login**.
6. First time users will see a pop-up box that states: “The Wizard application will guide you through for the first time configuration. Click the OK button to continue.”
7. Click **OK** to launch the wizard application.

Setup Wizard and Authentication

Step 1 - Change Password

Once you have launched the setup wizard, you will be prompted to change your password. Motorola recommends using a password to protect your home network and modem. Passwords are case-sensitive.

To change your password:

1. Ensure the **Enable Login Password Protection** check box is selected.
2. Enter a **New Login Password** in the box. Passwords can be no more than 20 characters in length.
3. Re-type your new password in the **Confirm New Login Password** box.
4. Click **Next**.

Step 2 - Device Time

This screen allows you to set the time zone and to enable Daylight Savings Time (when applicable) for your location.

1. Select the appropriate time zone for your location from the drop down box.
2. Select the **Auto Adjust for Daylight Savings Time** check box if you live in a region that observes Daylight Savings Time. (This check box is selected by default.)
3. Click **Next**.

Step 3 - WiMAX Security

The WiMAX Security tab will contain your authentication method. Check with Sprint to determine whether a user name and password are required for authentication purposes.

- If the Authentication Method is EAP-TLS:
 - Enter the Realm information supplied by Sprint.
 - Click **Apply** when finished.
- If the Authentication Method is EAP-TTLS/MS-CHAPv2:
 - Enter the User name and Password as supplied by Sprint.
 - Enter the Realm information as provided by Sprint.
 - Click **Apply** when finished.

Congratulations! You have now completed the setup of your WiMAX connection.

- Click **OK** on the Congratulations! dialog box.

A status screen will appear showing Network status. When your modem successfully connects to the Internet, you will see the actual link status and statistics. Note that the screen shown in this illustration is an example of the screen. Use the scroll bar on your menu screen to view all the status items that are reported by your unit.



Figure 6: Status Screen

Section 3: Basic Configuration

- ◆ Personalize Menu (page 10)
- ◆ Internet Menu (page 12)
- ◆ Status Menu (page 14)

Once the setup has been completed, you can log in to your modem from any computer on your home network by typing the device name in the address bar. The default device name is **mywimax**. or **192.168.15.1**.

This section describes the **Personalize**, **Internet**, and **Status** menus.

Personalize Menu

The Personalize menu provides the following tabs:

- Password
- Device Time
- Device Name
- Restore Factory Settings

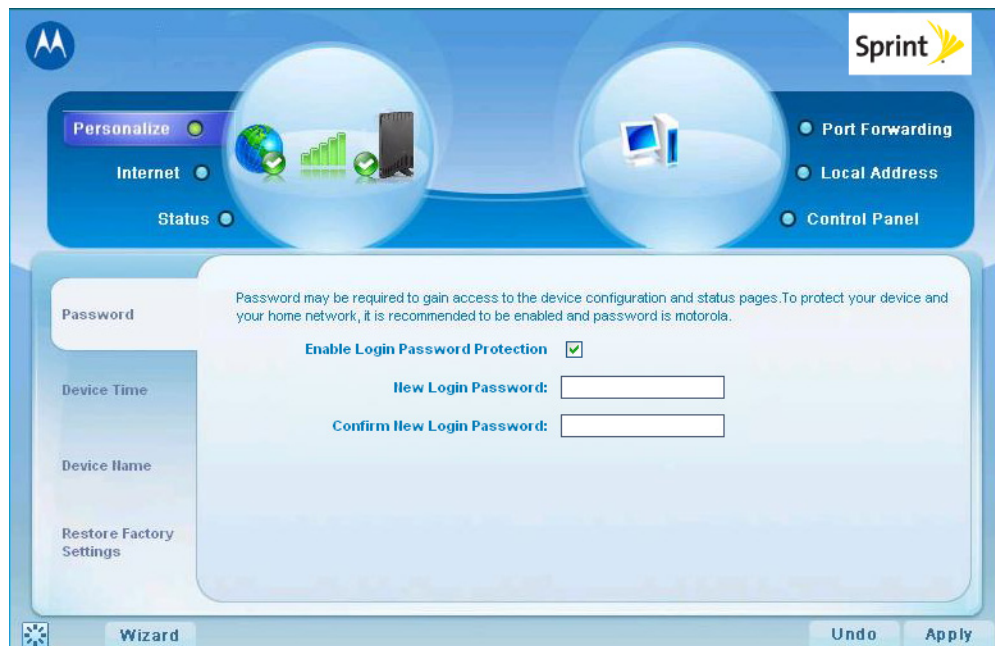


Figure 7: Personalize Menu (Password Tab)

Password Tab

The **Password** tab allows you to enable/disable password protection. You can also change your password here. Be sure to click **Apply** when finished.

Password Tab Fields

Field or Button	Description
Enable Login Password Protection	Selecting this check box will require login Password Protection.
New Login Password	Enter your new password here. Maximum 20 characters. Passwords are case-sensitive.
Confirm New Login Password	Re-enter your new password here, exactly as entered above.

Device Time Tab

The **Device Time** tab allows you to establish the time zone for your location. It also allows you to automatically adjust for Daylight Savings Time if necessary. Be sure to click **Apply** when finished.

Device Time Tab Fields

Field or Button	Description
Current Local Time	Shows the current local date and time.
Time Zone	Select your local time zone from the drop down box.
Auto Adjust for Daylight Saving Time	Select this check box if your location observes Daylight Savings Time. (Default is checked.)

Device Name Tab

The **Device Name** tab allows you to rename your modem. This is the Device Name you enter on an Internet browser address bar to access your modem. Be sure to click **Apply** when finished.

Device Name Tab Fields

Field or Button	Description
New Device Name	Enter the new name for the modem. Maximum 20 characters.

Restore Factory Settings Tab

Restore Factory Settings Tab Fields

Field or Button	Description
Restore Factory Settings	Selecting this check box will restore the modem to factory default settings. The device will restart when you click Apply .

Internet Menu

The Internet menu provides the following tabs:

- WiMAX Security
- Internet Protocol Tab
- Firewall
- Dynamic DNS

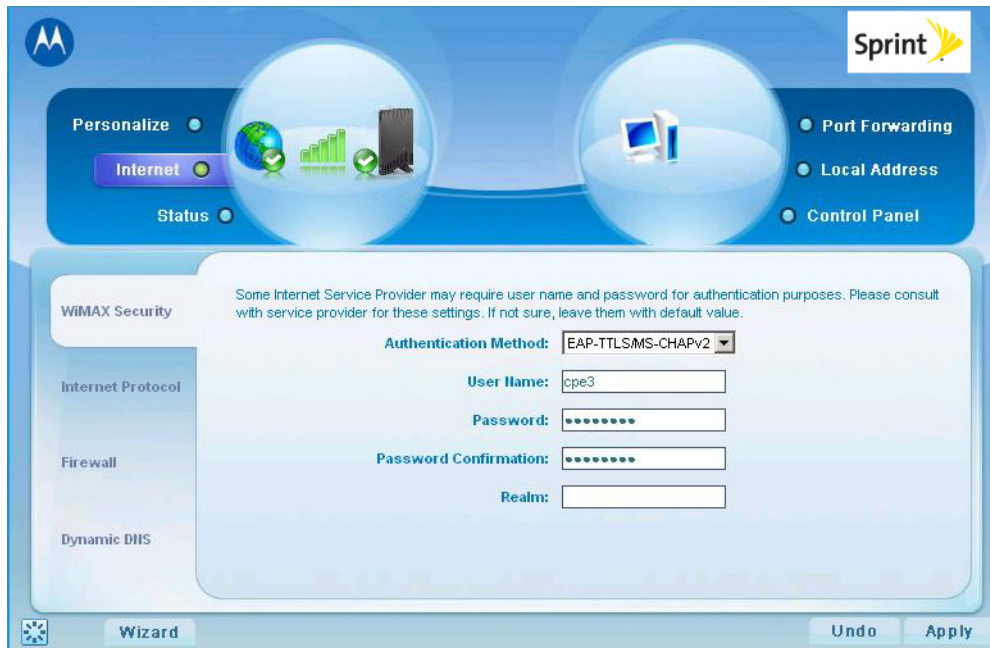


Figure 8: Internet Menu Screen (WiMAX Security Tab)

WiMAX Security Tab

The **WiMAX Security** tab will contain your authentication method. Check with Sprint to determine whether a user name and password are required for authentication purposes.

WiMAX Tab Fields

Field or Button	Description
Authentication Method	Drop down box allows you to select either EAP-TLS (default) or EAP-TTLS/MS-CHAPv2.
User Name (EAP-TTLS/MS-CHAPv2 only)	Enter the User Name supplied by Sprint (if applicable).
Password (EAP-TTLS/MS-CHAPv2 only)	Enter the Password supplied by Sprint (if applicable).
Realm	Supplied by Sprint (if applicable).

- If your authentication method is EAP-TLS, then a User Name and Password are not necessary.
- Click **Apply** to apply any customized settings.

Internet Protocol Tab

Please check with Sprint to determine if these settings are required. If you are unsure of the settings, leave the default values set and click **Apply**.

If Sprint has instructed you to change any of these settings, be sure to click **Apply** when you are finished.

Firewall Tab

A firewall helps to protect your home network from unauthorized access. It will also help to manage authorized access from the Internet to your modem.

Firewall Tab Fields

Field or Button	Description
Enable Firewall	Select this check box to enable the firewall for your home network.
Enable Web Login from Internet	(Grayed out if Enable Firewall is not selected.) Selecting this check box enables you to access your modem from a network other than your own.
Web Login Port from Internet	Choose a port number to connect to when logging in from a network other than your own. The default is 8080.
Enable ping from Internet	Enables the modem to respond to a ping from the Internet. This option would be enabled to allow testing only. Do not leave this enabled.

The **Enable Web Login from Internet** and the **Enable Ping from Internet** options are by default turned off. This is because these options allow unknown users to access your computer via the internet, and this is not safe.

You may need to turn these options on if there is a problem with your modem or Internet connection. Turning these options on will allow Sprint access to your computer to troubleshoot any problems. Remember to enter the number of the port that is allowed to access your computer if these options are turned on.

Be sure to click **Apply** once you are finished.

Dynamic DNS Tab

Dynamic Domain Name Service (DDNS) allows a user with a non-static IP address to keep their domain name associated with an ever changing IP address. As an example, DDNS is used when you are hosting your own website.

Dynamic DNS Tab Fields

Field or Button	Description
Enable DDNS	Select this check box to Enable DDNS. (Default is unchecked.)
DDNS Service Provider	Select the DDNS Service Provider that you belong to from the drop down box.

Be sure to click **Apply** once you are finished.

Status Menu

The **Status** menu provides the following tab:

- Network



Figure 9: Status Menu Screen (Network Tab)

Network Tab

The **Network** tab will provide any status associated with your WiMAX wireless broadband connection.

Section 4: Advanced Configuration

- ◆ Port Forwarding Menu (page 15)
- ◆ Local Address Menu (page 17)
- ◆ Control Panel Menu (page 20)

Port Forwarding Menu

Port forwarding enables you to direct incoming traffic to specific LAN hosts (computers on your network) based on the protocol and port number. It is used to play Internet games or provide local services (such as web hosting) for a LAN group.

The **Port Forwarding** menu contains the following tabs:

- Basic
- Forwarding



Figure 10: Port Forwarding Menu Screen (Basic Tab)

Basic Tab

Port Forwarding Basic Tab Fields

Field or Button	Description
Enable UPnP IGD	Enables Universal Plug and Play (UPnP) Internet Gateway Device (IGD) profile to allow certain Windows applications to setup the port forwarding rule dynamically when NAT is enabled on this device.
DMZ IP Address	Enter the DMZ IP Address.

Be sure to click **Apply** once you have made changes.

Forwarding Tab

Click **ADD** to create additional Port Forwarding rules.

Forwarding Tab Fields

Field or Button	Description
Select	Select a box when you want to delete the specific row.
Protocol	Select TCP (Transmission Control Protocol) or UDP (User Datagram Protocol).
WAN Port Start	Enter the beginning port range for external network access.
WAN Port End	Enter the ending port range for external network access.
LAN IP Address	Enter the IP address to host the service in the dotted-decimal format.
LAN Port Start	Enter the beginning port range for internal network access.
LAN Port End	Enter the ending port range for internal network access.
Enabled	Check to enable specific port forwarding.

Be sure to click **Apply** once you have made changes.

Local Address Menu

The **Local Address** menu allows you to configure your Local Area Network (LAN) connections. It contains the following tabs:

- DHCP Server
- Lease Status
- Lease Reservation

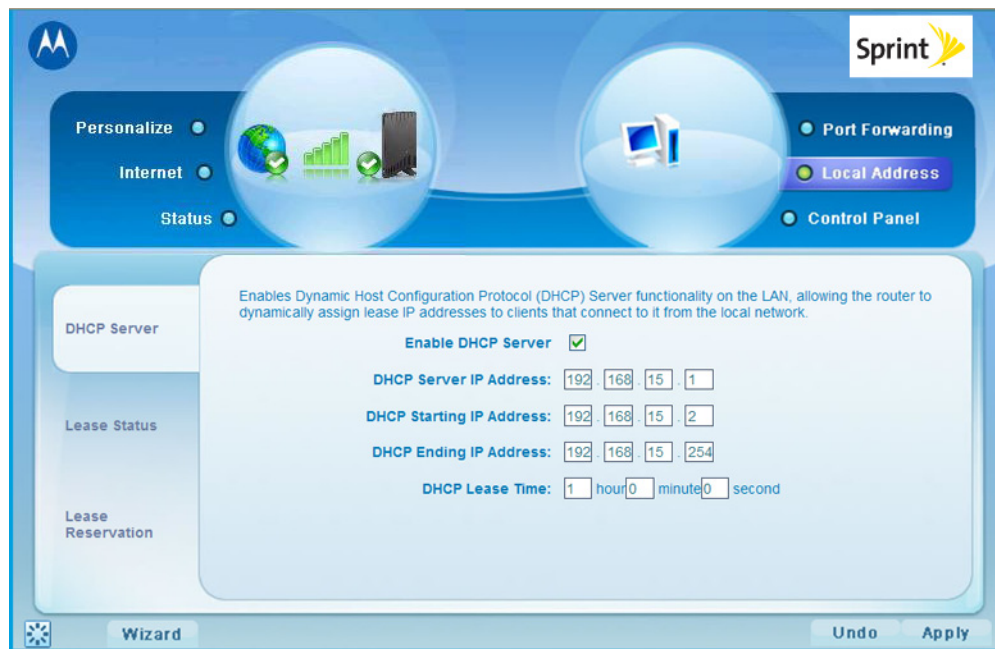


Figure 11: Local Address Menu Screen (DHCP Server Tab)

DHCP Server Tab

The **DHCP Server** tab enables Dynamic Host Configuration Protocol (DHCP) server functionality on the LAN, allowing the router to dynamically assign lease IP addresses to clients that connect to it from the local network.

DHCP Server Tab Fields

Field or Button	Description
Enable DHCP Server	<p>If selected, the DHCP server on the gateway assigns IP addresses to the computers and other hosts on your network if they have DHCP enabled. By default, the gateway server is enabled. If there is another DHCP server running on your network (on another router), you must disable one of the DHCP servers.</p> <p>If not selected, you must carefully configure the IP address, Subnet Mask, and DNS settings of every host on your network. Do not assign the same IP address to more than one host. Your gateway must be on the same subnet as the other hosts.</p>
DHCP Server IP Address	Enter the default port forwarding LAN Client IP Address.
DHCP Starting IP Address	Sets the first IP address assigned by the DHCP server, in dotted-decimal format. It must be greater than the IP address value of the gateway. For example, if the IP address of the gateway is 192.168.15.1 (default), the starting IP address must be 192.168.15.2 (or higher).
DHCP Ending IP Address	Sets the final IP address assigned by the DHCP server. If the DHCP server runs out of DHCP addresses, users cannot access network resources. If this happens, increase the Ending IP (to the limit of 254) or reduce the Lease Time.
DHCP Lease Time	Sets the time, in seconds, that a network computer remains connected to the gateway using its current assigned IP address. At the end of this time, the DHCP server renews the lease or assigns the computer a new IP address. The default is 1 hour. The maximum is about 278 hours.

Be sure to click **Apply** once you have made changes.

Lease Status Tab

The **Lease Status** tab in the Local Address menu displays the active DHCP leases since the last reboot.

Lease Status Tab Fields

Field or Button	Description
Client Host Name	Displays the client host name. The Name field is limited to 20 characters (only 5 appear in display).
MAC Address	Media Access Control (MAC) address.
IP Address	Shows the IP Address for each active lease.
Remaining Lease Duration	Shows the amount of time, in seconds, remaining in the lease.

Be sure to click **Apply** once you have made changes.

Lease Reservation Tab

This tab allows you to manage the lease reservation so that the same client receives the same IP address each time.

Lease Reservation Tab Fields

Field or Button	Description
Select	Select this box if you want to delete an established lease reservation. Be sure to click Delete once you have selected your exception to be deleted.
Client Host Name	Enter the client host name. The Name field is limited to 20 characters (only 5 appear in display).
MAC Address	Media Access Control (MAC) address. Enter the MAC address of the device.
IP Address	Enter the IP address that you want assigned to the MAC Address.
Enabled	Checking this box enables the lease reservation.

Click **Add** to create an additional Lease Reservation.

To delete a Lease Reservation, select the reservation to be removed and click **Delete**.

Be sure to click **Apply** once you have made changes.

Control Panel Menu

The **Control Panel** menu allows you to view and update your software information. It contains the following tabs:

- Software
- Certificate
- System
- About



Figure 12: Control Panel Menu Screen (Software Tab)

Software Tab

The **Software** tab manages the software on your modem. It is also where you can upgrade device software.

Software Tab Fields

Field or Button	Description
Browse	Use this button to browse your computer for additional software packages.
Upgrade	Once you have located the software package/update you would like to add to your device.
View	Use this button if you are unable to see the Available Software List.
Install	Click this button to begin installation of the software you have selected.
Uninstall	Click this button to uninstall a selected software package.

Certificate Tab

The **Certificate** tab is where you manage the certificates that are stored on the modem.

Certificate Tab Fields

Field or Button	Description
Browse	Use this button to locate a certificate file on your computer.
Import	Click this button to install a certificate once you have located the certificate file on your computer.
Remove	Click this button to remove a selected certificate.

System Tab

This tab allows you to manage additional features of your modem.

System Tab Fields

Field or Button	Description
Language Used in User Interface	Select the desired language for the user interface. The default language is English.
Enable WiMAX Radio Interface	Check this box to enable the WiMAX Radio Interface.
Auto Refresh Interval	Enter, in seconds, the interval for status Auto Refresh. Valid range is 10 seconds - 60 seconds. The default value is 10 seconds.
Rebootstrap EMS	Check this box to reconnect the device with the EMS. NOTE: Only perform this function under the supervision of a Customer Support Representative.

Be sure to click **Apply** once you have made changes.

About Tab

The **About** tab displays basic properties of your modem such as: Part Number, Model ID, Hardware Version, Serial Number, and the WiMAX MAC Address.

Section 5: Configuring TCP/IP

- ◆ Configuring TCP/IP in Windows 2000 (page 22)
- ◆ Configuring TCP/IP in Windows XP (page 26)

This section contains two examples of configuring TCP/IP in a Windows environment. Most computers already have the TCP/IP configuration enabled. Use the following procedures to verify that the configuration is set up.

All client computers on your network must be configured for TCP/IP (the protocol that controls communication among computers).

Note: Follow the instructions in your computer user manual for other Operating Systems.

Configuring TCP/IP in Windows 2000

1. On the Windows desktop, click **Start**.
2. Select **Settings** and then **Control Panel** from the pop-up menus to display the Control Panel window:

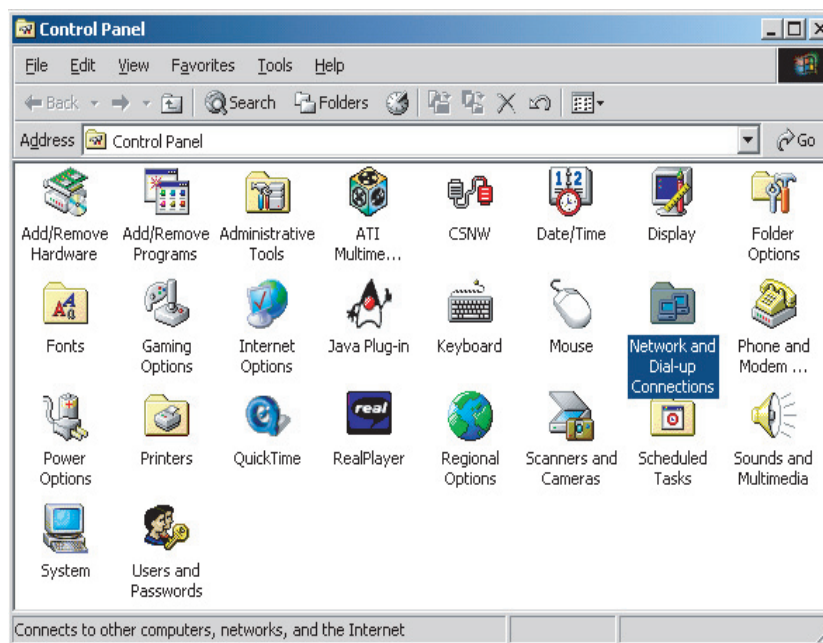


Figure 13: Windows Control Panel

3. Double-click the **Network and Dial-up Connections** icon to display the Network and Dial-up Connections window:

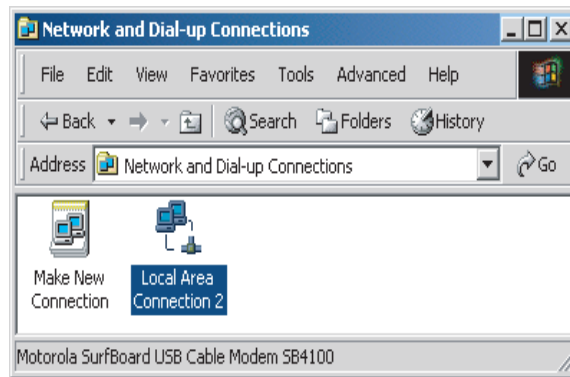


Figure 14: Network and Dial-Up Connections

4. Click **Local Area Connection** number icon. The value of number varies from system to system. The Local Area Connection number Status window is displayed:

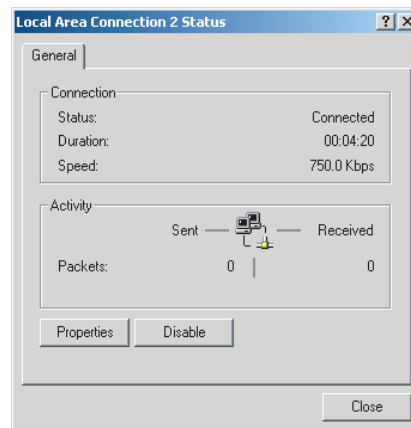


Figure 15: Local Area Connection

5. Click **Properties**. Information similar to the following window is displayed:

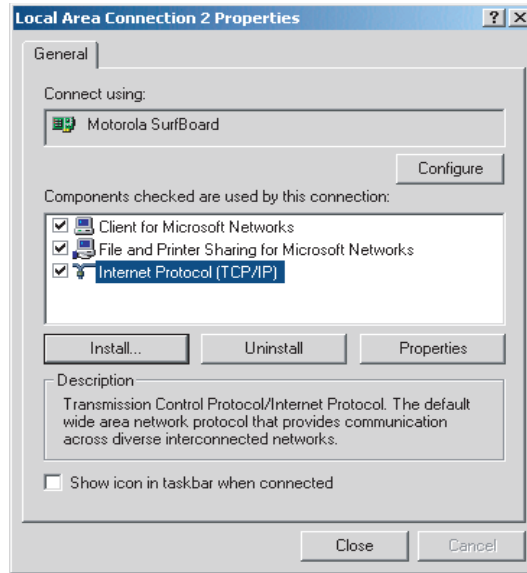


Figure 16: Properties

6. If Internet Protocol (TCP/IP) is in the list of components, TCP/IP is installed. You can skip to step 11.
7. If Internet Protocol (TCP/IP) is not in the list, click **Install**. The Select Network Component Type window is displayed:

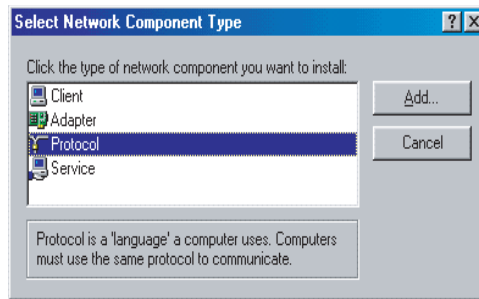


Figure 17: Select Network Component Type

- Click **Protocol** on the Select Network Component Type window and click **Add**. The Select Network Protocol window is displayed:

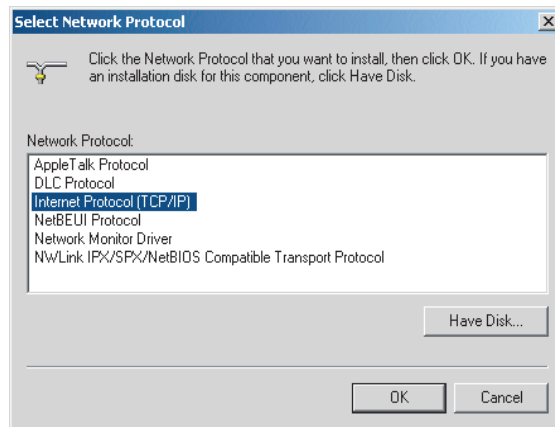


Figure 18: Select Network Protocol

Note: You may have to use the scroll bar to locate the Internet Protocol (TCP/IP) setting.

- Click **Internet Protocol (TCP/IP)**.
- Click **OK**. The Local Area Connection number Properties window is re-displayed.
- Be sure the box next to **Internet Protocol (TCP/IP)** is checked.
- Click **Properties**. The Internet Protocol (TCP/IP) Properties window is displayed:

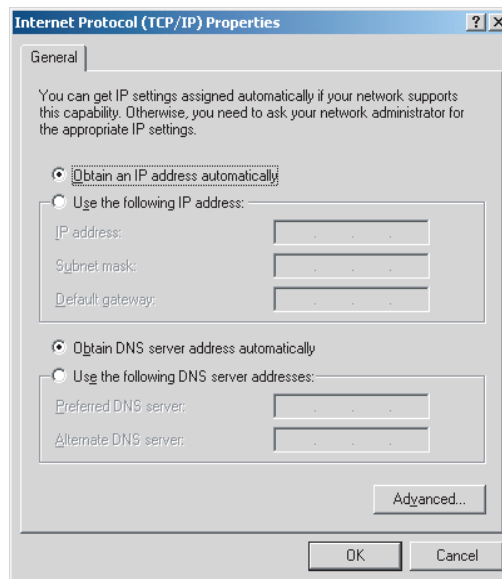


Figure 19: Internet Protocol (TCP/IP) Properties

- Be sure **Obtain IP address automatically** and **Obtain DNS server address automatically** are selected.
- Click **OK** to accept the TCP/IP settings.
- Click **Close** to close the Local Area Connection number Properties window.
- Click **OK**.

17. If prompted to restart the computer and click **OK** again.

Configuring TCP/IP in Windows XP

1. On the Windows desktop, click **Start** to display the Start window:

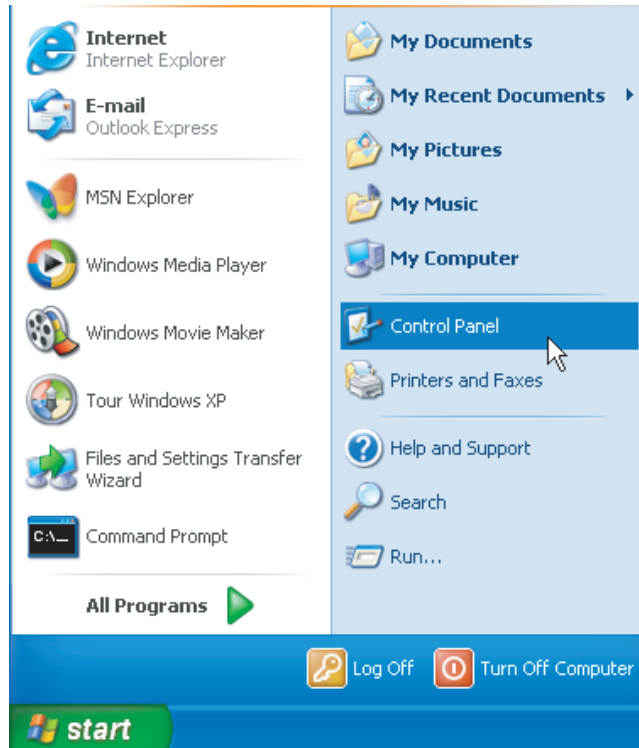


Figure 20: Windows XP Start Window

2. Click **Control Panel** to display the Control Panel window. The display varies, depending on your Windows XP view options. If the display is a Category view as shown below, continue with step 3. Otherwise, skip to step 5.

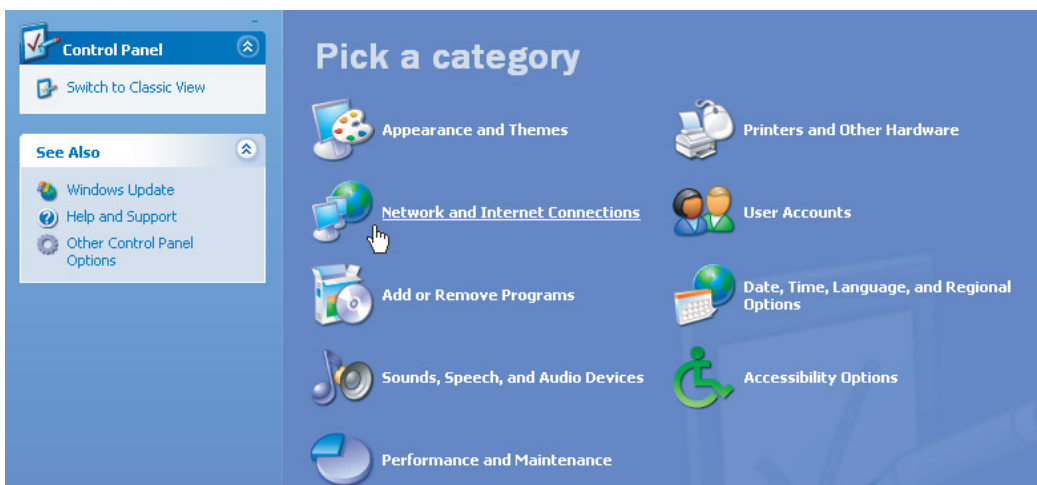


Figure 21: Control Panel (Category View)

3. Click **Network and Internet Connections** to display the Network and Internet Connections window:

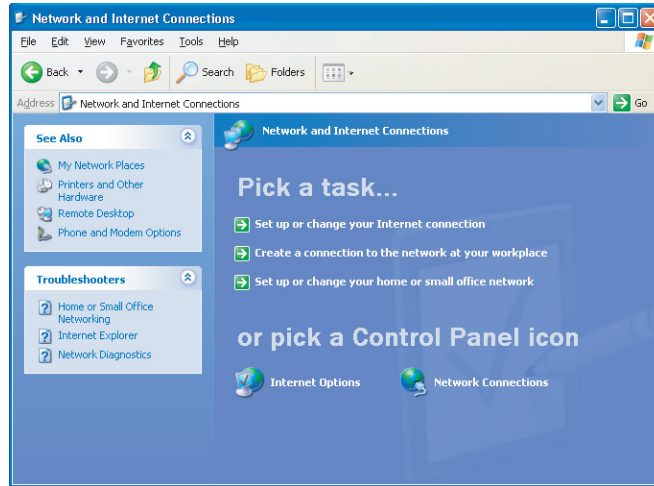


Figure 22: Network and Internet Connections

4. Click **Network Connections**. Skip to Step 6.
5. If a classic view similar to below is displayed, double-click **Network Connections** to display the LAN or High-speed Internet connections.

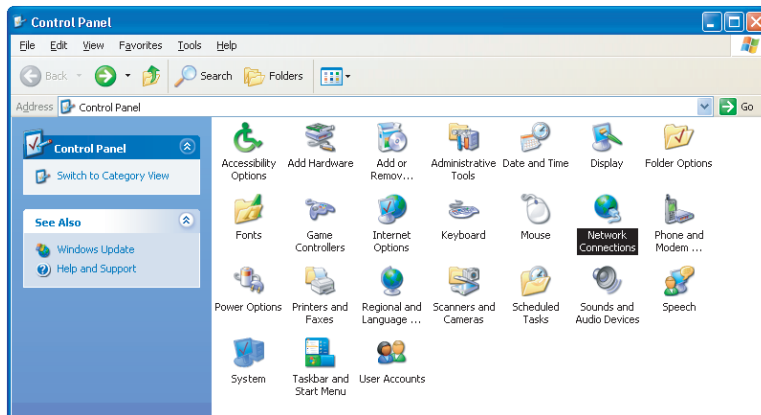


Figure 23: Control Panel (Classic View)

6. Right-click the Local Area Connection. If more than one connection is displayed, be sure to select the one for your network interface.

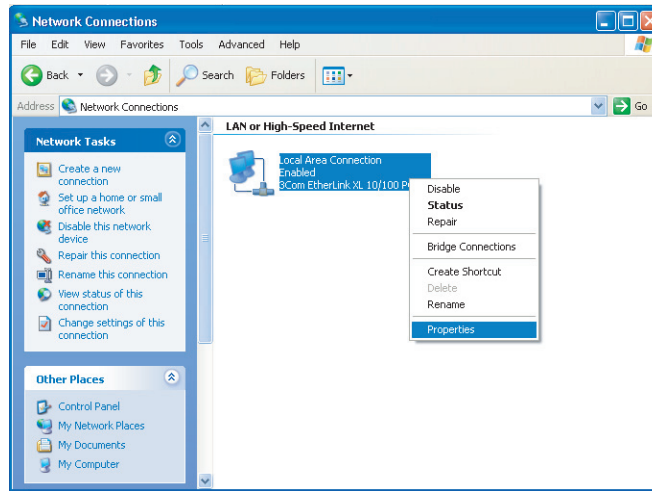


Figure 24: Network Connections

7. Select **Properties** from the pop-up menu to display the Local Area Connection Properties window:

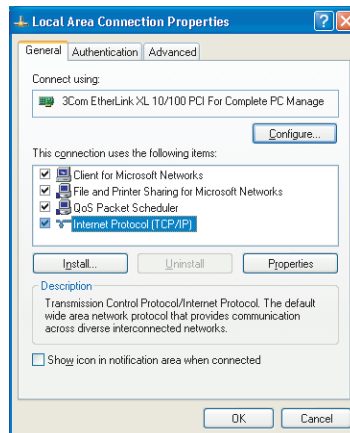


Figure 25: Local Area Connection Properties

8. On the Local Area Connection Properties window, select **Internet Protocol (TCP/IP)** if it is not selected.

9. Click **Properties** to display the Internet Protocol (TCP/IP) Properties window:

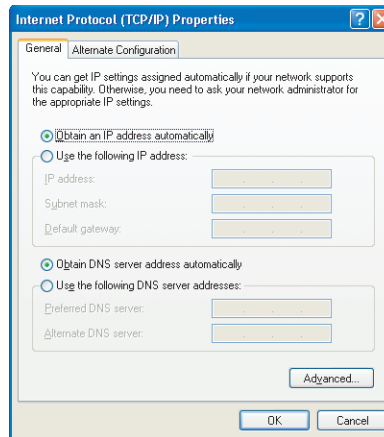


Figure 26: Internet Protocol (TCP/IP) Properties

- Be sure **Obtain IP address automatically** and **Obtain DNS server address automatically** are selected.
- Click **OK** to close the TCP/IP Properties window.

Section 6: Troubleshooting

This page provides basic troubleshooting procedures for your CPEi 25150 4G desktop modem.

LED indicators are Off

- Check that the AC power adapter is properly plugged into the electrical outlet and into the modem.

A Computer Cannot Log On to the Modem

- Check that the Ethernet cable is properly connected to the modem unit and the computer.

Cannot Connect to the Internet

- Check the modem connection status from the Web interface. Refer to the Connection Status section to verify the connection status.
- If the desktop modem connection is down, and the gateway has not received an IP for more than 5 minutes, re-run the set up wizard.
- To restart the modem, unplug the power and re-connect.

Additional Troubleshooting Help

Visit sprint.com/support or contact a Sprint representative at **1-866-639-9565** for additional help.

Section 7: Important Safety and Legal Information

Your Motorola WiMAX Wireless Broadband Gateway is designed and tested to comply with a number of national and international standards and guidelines (listed below) regarding human exposure to RF electromagnetic energy.

This Product complies with the following RF energy exposure standards and guidelines:

- United States Federal Communications Commission, Code of Federal Regulations; 47CFR part 2 sub-part J
- American National Standards Institute (ANSI)/ Institute of Electrical and Electronic Engineers (IEEE) C95.1-2005
- Institute of Electrical and Electronic Engineers (IEEE) C95.1-1999 Edition
- International Commission on Non-Ionizing Radiation Protection (ICNIRP) 1998
- Ministry of Health (Canada) Safety Code 6. Limits of Human Exposure to Radio frequency Electromagnetic Fields in the Frequency Range from 3 kHz to 300 GHz, 1999

RF Exposure Compliance and Guidelines Operating Instructions

To comply with FCC RF energy exposure requirements, this Gateway desktop transmitter should be operated at a minimum separation distance of 20 cm from all persons.

For additional information on exposure requirements or other training information, visit <http://www.motorola.com/rfhealth>.

FCC Regulatory Information

This device complies with Part 15 of the FCC Rules. Operation is subject to the following two conditions: (1) this device may not cause harmful interference, and (2) this device must accept any interference received; including interference that may cause undesired operation.

This equipment has been tested and found to comply with the limits for a Class B digital device pursuant to Part 15 of the FCC rules. These limits are designed to provide reasonable protection against harmful interference in a residential installation. This equipment generates, uses, and can radiate radio frequency energy and, if not installed and used in accordance with the instructions, may cause harmful interference to radio communications.

However, there is no guarantee that interference will not occur in a particular installation. If this equipment does cause harmful interference to radio or television reception, which can be determined by turning the equipment off and on, the user is encouraged to try to correct the interference by one of the following measures:

- Reorient or relocate the receiving antenna.
- Increase the separation between the equipment and receiver.
- Connect the equipment into an outlet on a circuit different from that to which the receiver is connected.
- Consult the dealer or an experienced radio/TV technician for help.

This Gateway desktop transmitter must not be co-located or operating in conjunction with any other antenna or transmitter.

FCC Caution: Any changes or modifications not expressly approved by the party responsible for compliance could void the user's authority to operate this equipment.

Industry Canada Statement

This device complies with RSS-193, and RSS-Gen of the Industry Canada Rules. Operation is subject to the following two conditions:

- this device may not cause interference and
- this device must accept any interference, including interference that may cause undesired operation of the device

This device has been designed to operate with an antenna having a maximum gain of 7 dBi. Antenna having a higher gain is strictly prohibited per regulations of Industry Canada. The required antenna impedance is 50 ohms. To reduce potential radio interference to other users, the antenna type and its gain should be so chosen that the equivalent isotropically radiated power (e.i.r.p) is not more than that permitted for successful communications.

This Class B digital apparatus complies with Canadian ICES-003.

Cet appareil numérique de la classe B est conforme à la norme NMB-003 du Canada.

IC Radiation Exposure Statement:

This equipment complies with IC radiation exposure limits set forth for an uncontrolled environment. This equipment should be installed and operated with minimum distance 20cm between the radiator & your body.

Caring for the Environment

The following information is provided to enable regulatory compliance with the European Union (EU) Directive 2002/96/EC Waste Electrical and Electronic Equipment (WEEE) when using Motorola Networks equipment in EU countries.

Disposal of Motorola Equipment in EU Countries

This product is compliant with the requirements of the European Union Restriction of Hazardous Substances (EU RoHS) directive.

Please do not dispose of Motorola Networks equipment in landfill sites.

In the EU, Motorola Networks in conjunction with a recycling partner will ensure that equipment is collected and recycled according to the requirements of EU environmental law.

Disposal of Motorola Equipment in Non-EU Countries

In non-EU countries, dispose of Motorola Networks equipment in accordance with national and regional regulations.

CMM Disclosure

The China Management Methods (CMM) Disclosure Table is intended only to communicate compliance with China requirements; it is not intended to communicate compliance with EU RoHS or any other environmental requirements.

Disclosure table

部件名称	有毒有害物质或元素					
	铅 (Pb)	汞 (Hg)	镉 (Cd)	六价铬 (Cr ⁶⁺)	多溴联苯 (PBB)	多溴二苯醚 (PBDE)
金属部件	×	○	×	×	○	○
电路模块	×	○	×	×	○	○
电缆及电缆组件	×	○	×	×	○	○
塑料和聚合物部件	○	○	○	○	○	×

○：表示该有毒有害物质在该部件所有均质材料中的含量均在 SJ/T11363-2006 标准规定的限量要求以下。
×：表示该有毒有害物质至少在该部件的某一均质材料中的含量超出 SJ/T11363-2006 标准规定的限量要求。

Figure 27: CMM Disclosure Information

Copyrights and Trademarks

Notice

While reasonable efforts have been made to assure the accuracy of this document, Motorola, Inc. assumes no liability resulting from any inaccuracies or omissions in this document, or from use of the information obtained herein. The information in this document has been carefully checked and is believed to be entirely reliable. However, no responsibility is assumed for inaccuracies or omissions. Motorola, Inc. reserves the right to make changes to any products described herein and reserves the right to revise this document and to make changes from time to time in content hereof with no obligation to notify any person of revisions or changes. Motorola, Inc. does not assume any liability arising out of the application or use of any product, software, or circuit described herein; neither does it convey license under its patent rights or the rights of others.

It is possible that this publication may contain references to, or information about Motorola products (machines and programs), programming, or services that are not announced in your country. Such references or information must not be construed to mean that Motorola intends to announce such Motorola products, programming, or services in your country.

Copyrights

This instruction manual, and the Motorola products described in this instruction manual may be, include or describe copyrighted Motorola material, such as computer programs stored in semiconductor memories or other media. Laws in the United States and other countries preserve for Motorola and its licensors certain exclusive rights for copyrighted material, including the exclusive right to copy, reproduce in any form, distribute and make derivative works of the copyrighted material. Accordingly, any copyrighted material of Motorola and its licensors contained herein or in the Motorola products described in this instruction manual may not be copied, reproduced, distributed, merged or modified in any manner without the express written permission of Motorola. Furthermore, the purchase of Motorola products shall not be deemed to grant either

directly or by implication, estoppel, or otherwise, any license under the copyrights, patents or patent applications of Motorola, as arises by operation of law in the sale of a product.

Usage and Disclosure Restrictions

License Agreements

The software described in this document is the property of Motorola, Inc and its licensors. It is furnished by express license agreement only and may be used only in accordance with the terms of such an agreement.

Copyrighted Materials

Software and documentation are copyrighted materials. Making unauthorized copies is prohibited by law. No part of the software or documentation may be reproduced, transmitted, transcribed, stored in a retrieval system, or translated into any language or computer language, in any form or by any means, without prior written permission of Motorola, Inc.

High Risk Materials

Components, units, or third-party products used in the product described herein are NOT fault-tolerant and are NOT designed, manufactured, or intended for use as on-line control equipment in the following hazardous environments requiring fail-safe controls: the operation of Nuclear Facilities, Aircraft Navigation or Aircraft Communication Systems, Air Traffic Control, Life Support, or Weapons Systems (High Risk Activities). Motorola and its supplier(s) specifically disclaim any expressed or implied warranty of fitness for such High Risk Activities.

Trademarks

MOTOROLA and the Stylized M Logo are registered in the US Patent & Trademark Office. All other product or service names are the property of their respective owners.

© 2009 Motorola, Inc.