

the  
**first  
years**®

Expert developed ♥ Parent preferred

# All-Clear™ swing gate

Before returning this product to the store for any reason, please contact our Parent Service Center at

**1-800-533-6708 or**

**[www.thefirstyears.com](http://www.thefirstyears.com)**

We can provide helpful tips and instructions, and may be able to resolve your problem over the phone or via e-mail.



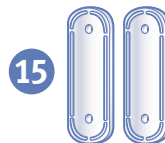
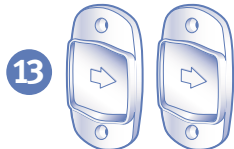
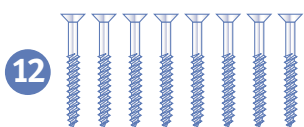
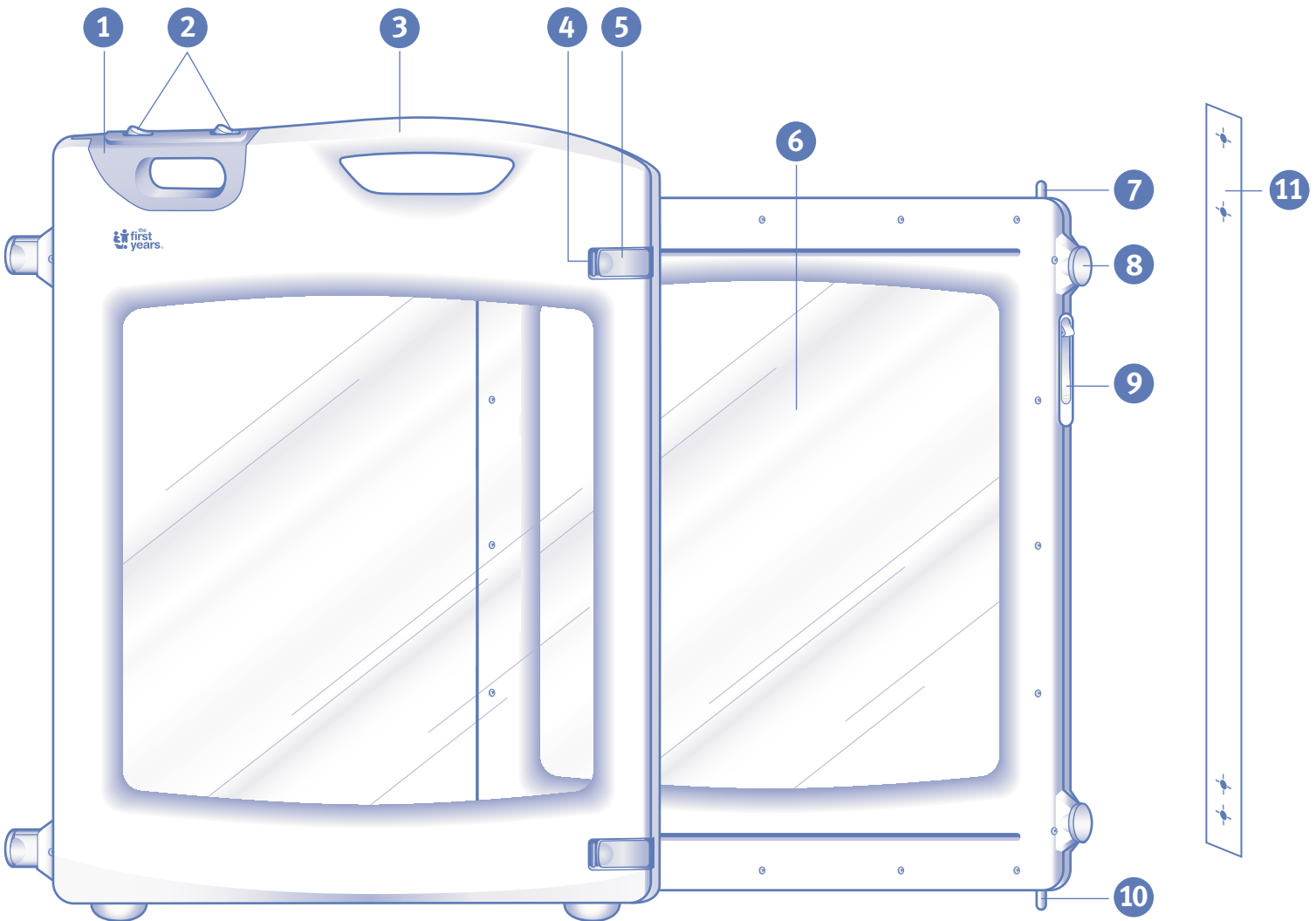
- Fits doorways 27.5–42.5 inches wide
- Option of hardware or pressure mount
- Intended for use with children from 6 to 24 months

- ① release handle
- ② release buttons (2)
- ③ carry handle
- ④ adjustment buckle tabs
- ⑤ adjustment buckles
- ⑥ panels
- ⑦ top hinge pin
- ⑧ adjustment knobs (4)
- ⑨ hinge pin release slider
- ⑩ lower hinge pin
- ⑪ two-sided mounting template

- ⑫ 2" wood screws (8)
- ⑬ safety brackets (2)\*\*
- ⑭ upper hinge bracket
- ⑮ 1/8" hinge bracket spacers (2)\*
- ⑯ 9/16" hinge bracket spacer\*
- ⑰ lower hinge bracket

\*When using the gate in hardware mode in a doorway with a baseboard, you might need to use these hinge bracket spacers.

**\*\*IMPORTANT:** When installing the gate at the top of the stairs, you must install the safety brackets.





## WARNING:

**IMPORTANT! KEEP THESE INSTRUCTIONS FOR FUTURE REFERENCE.**

- To prevent serious injury or death, securely install gate and use according to manufacturer's instructions.
- Check daily that gate is securely fixed.
- To prevent falls, never use at top of stairs without stair safety brackets.
- Use only with locking mechanisms securely engaged.
- This safety barrier must not be fixed across windows and similar openings.
- If this gate is used at the top of the stairs to prevent a child from falling down the stairs, it must not be placed on any stair below the level of the top stair.
- If this gate is used at the bottom of the stairs to prevent child from climbing up the stairs, it must be placed on the lowest stair.
- Discontinue use immediately if any component is damaged or missing.
- Do not hang or tie toys to any part of the gate.
- Never allow children to swing on the gate.
- Never use with a child able to climb over, dislodge or open the gate.
- Keep child away from gate during operation.
- Never leave child unattended.
- Replacement parts should only be obtained from The First Years.

### Plan ahead

Before you begin installation, you need to decide whether you want to pressure mount or hardware mount the gate.

**Hardware mounting (pages 4-6) must be used when installing the gate at the top of the stairs**, and may be used in a doorway or hallway that you always want to be a secured area for your child. Hardware mounting provides the added convenience of one-handed, swing-thru opening. Once hardware is mounted, you can also switch back and forth for use in pressure mount application.

**Pressure mounting (pages 7-8)** should be used to secure doorways or hallways that you only need to protect your child from some of the time. Pressure mounting gives you the flexibility to easily move the gate from room to room.

**NOTE: When in pressure mount mode, gate does not swing open. You must remove entirely from doorway or area to open.**

**When hardware mounting the gate in a doorway with a baseboard**, you might need to use the spacers provided.

Hardware vs. Pressure Mount Usage		Hardware Mode	Pressure Mode
Location	Top of stairs	✓	
	Between rooms	✓	✓
Walk-through	Gate swings open for walk through	✓	
	Gate removal for walk through		✓
Baseboards	Works with uneven surfaces (Spacers provided for hardware mode)	✓	✓
Versatility	Interchangeable between hardware and pressure modes	✓	✓
	Portable between rooms		✓





**WARNING:**

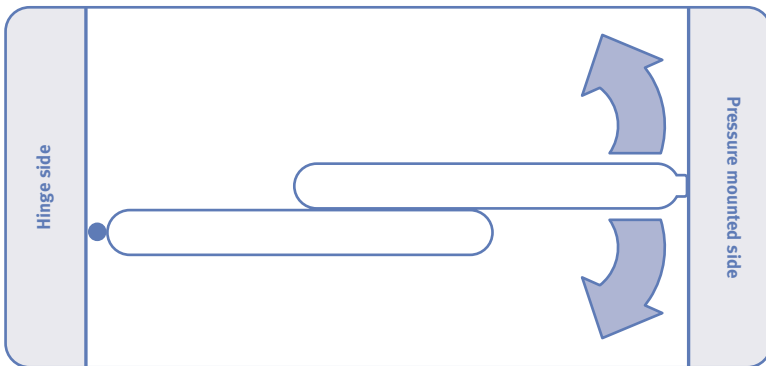
**ALWAYS** use the hardware mounting method when installing the All-Clear Swing Gate at the top of stairs, as it provides maximum security. Do not use in pressure mount mode at the top of stairs. Adult assembly required.

The First Years All-Clear Swing Gate can be either pressure mounted or hardware mounted. Once hardware mounted, you can also switch back and forth for use in pressure mount application.

**Hardware mounting for swing-thru convenience**

1

**Two-way swing  
minimum opening of 30" wide**



**Mounting area**

For proper installation, the gate must be installed in an opening where wall on both sides is straight and the floor is level.

**NOTE:** Hinge bracket spacers may be necessary if there's a baseboard. (See page 5 for installation instructions.)

**Mounting surfaces**

Remember that the hinge and wall mount brackets must be firmly screwed into solid wood surfaces or solid wood studs. Do not attach to metal railing or metal wall covering, or to sheet rock, plaster or lathe board (unless you have verified that a stud is directly underneath).

**Determine gate swing**

**Two-way swing** (diagram 1)

- Minimum opening of 30" wide

**One-way swing** (diagram 2)

- Stairway with an opening 27.5–42.5" wide (must use safety bracket)

**One-way swing** (diagram 3)

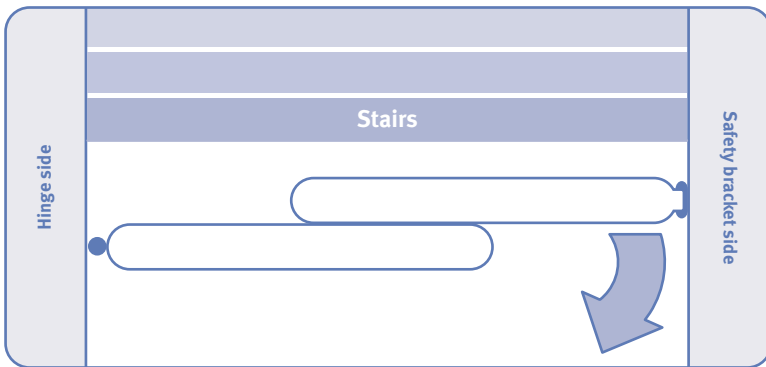
- Stairway with an opening 30–42.5" wide (must use safety bracket)

**You will need:**

- Drill with 1/8 inch drill bit
- Masking tape
- Phillips screwdriver

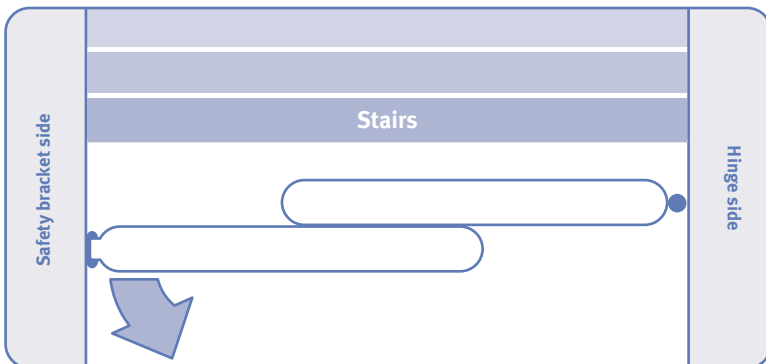
2

**One-way swing (for use at top of stairs)  
27.5" — 42.5" wide**



3

**One-way swing (for use at top of stairs)  
30" — 42.5" wide**



**WARNING:**

When mounting at the top of stairs **ALWAYS** assure gate swings away from stairs and **ALWAYS** use safety bracket.

## Attach hinge brackets

Attach hinge brackets to wooden stair post, doorframe or wall studs on the side of the stairway or doorway where you want hinges. Opening must be at least 27.5 inches wide but no wider than 42.5 inches. Gate will swing open on the opposite side. (See page 4 to determine gate swing.)

**NOTE:** You may need to use the hinge bracket spacers provided if gate is being mounted in a doorway or area with a baseboard.

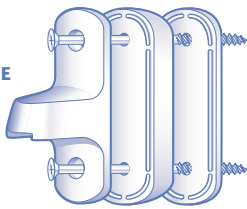
### 1. Installation with baseboard only:

Select the hinge bracket spacer(s) that will provide the additional width you need to eliminate the uneven space caused by the presence of a baseboard in the doorway or area you plan to install the gate.

### 2. Installation with baseboard only:

Stack the spacer(s) as needed under the upper hinge bracket (see example).

**EXAMPLE**



3. Position mounting template against mounting surface with bottom end flush against floor, as shown in diagram 4. Assure that template is straight.

4. Tape in place, as shown in diagram 4.

5. Use tip of screw to mark screw holes as shown in diagram 4.

6. Remove template and drill pilot holes with 1/8 inch drill bit, approximately 2 inches deep.

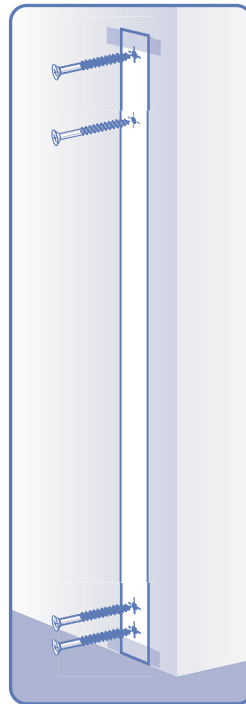
7. One at a time, attach the spacer/upper hinge bracket assembly and the lower hinge bracket to the wall. **Be sure to attach the upper hinge bracket (T-shaped) at the top and the lower hinge bracket (L-shaped) at the bottom** as shown in diagram 5.

a. Position hinge brackets so holes are centered over pilot holes.

b. Attach using 4 of the screws provided. Insert and secure the screws using a Phillips screwdriver.



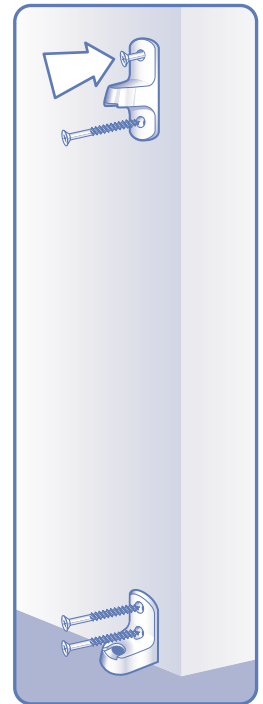
**INSTALLATION WITH BASEBOARD**



**INSTALLATION WITHOUT BASEBOARD**



**INSTALLATION WITH BASEBOARD**



**INSTALLATION WITHOUT BASEBOARD**

## Hang gate in hinge brackets

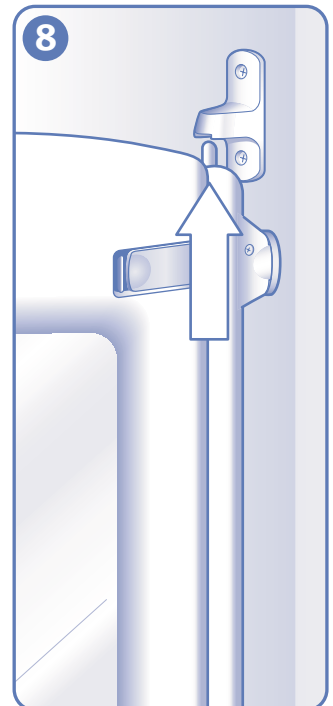
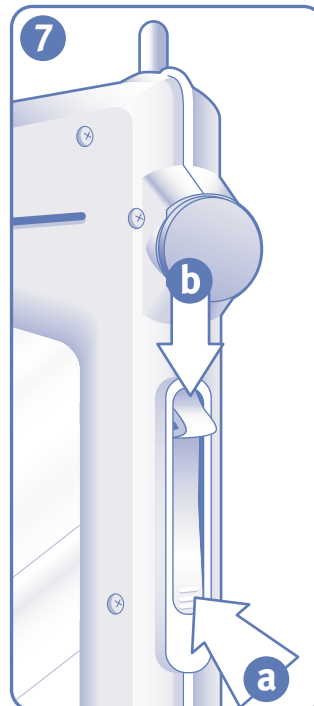
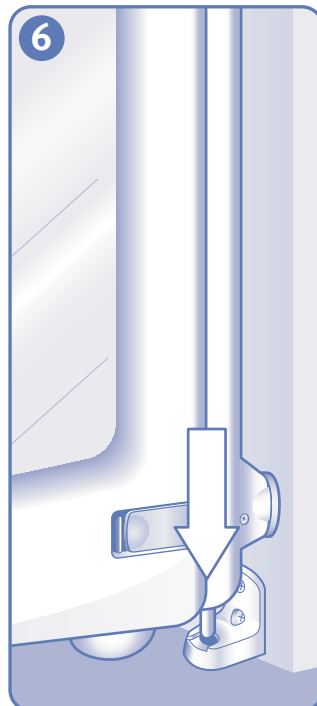
1. Place the lower hinge pin in lower hinge bracket as shown in diagram 6. Make sure the pin is properly seated in bracket.

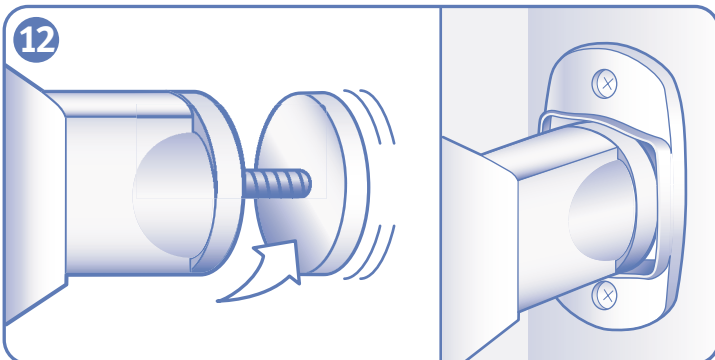
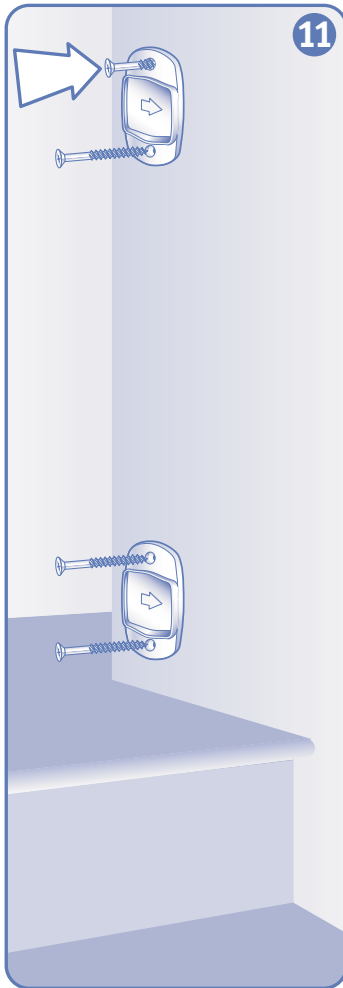
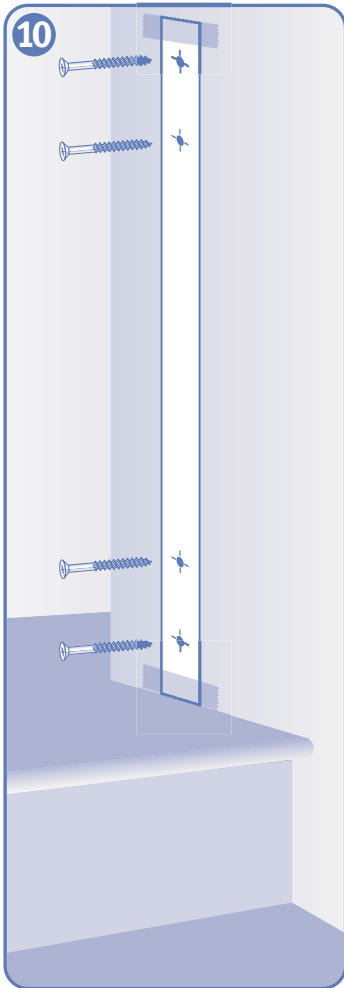
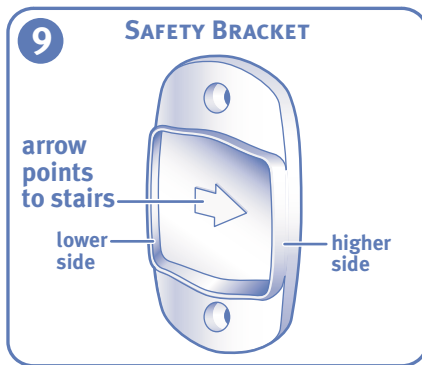
2. Lower the upper hinge pin as shown in diagram 7.

a. Press the bottom of the hinge pin release slider in.

b. Slide down to lower the upper hinge pin on top of the gate.

3. With the gate open, hold the gate 90° to hinge and directly below the upper hinge bracket. Align the upper hinge pin with the bracket as shown in diagram 8. Let go of the hinge pin release slider to spring load the hinge pin into the upper hinge bracket. Make sure the pin is properly seated in bracket.





### Attach safety brackets

(Required for use at the top of stairs; optional everywhere else.) These brackets are for use on wall or surface opposite the hinge bracket.



#### WARNING:

If installing the All-Clear Swing Gate at the top of the stairs, you must attach the 2 safety brackets to serve as a mechanical locking mechanism. Make sure arrows of stair safety brackets are located to side that faces stairs, as shown in diagram 9.

1. Position mounting template against mounting surface with bottom end flush against floor as shown in diagram 10. Assume that template is straight and in alignment with hinge brackets by swinging gate closed.
2. Tape in place as shown in diagram 10.
3. Use tip of screw to mark screw holes as shown in diagram 10.
4. Remove template and drill pilot holes with 1/8 inch drill bit, approximately 2 inches deep.
5. One at a time, attach the safety brackets to the wall with the arrow pointing to the stairs as shown in diagram 11.
  - a. Position brackets so holes are centered over pilot holes.
  - b. Attach using 4 of the screws provided. Insert and secure the screws using a Phillips screwdriver.
6. Swing gate in place to ensure bumpers come to a stop and rest in safety brackets. If needed, adjust adjustment knobs for proper fit in safety brackets, as shown in diagram 12.



#### WARNING:

Always check gate to ensure it stays in place.

### Adjust width

Go to page 7 and follow “Pressure mounting/Adjusting width” to adjust your gate width and finish the installation.

In order for gate to swing freely when mounted at top of stairs, you must adjust the width of the gate and adjustment knobs so that the edges of the adjustment knobs touch the lower sides of the safety brackets. If needed, see diagram 9 for location of lower side.

### To use

#### To open gate

Holding the release handle with one hand, *first* use your thumb to push and slide the release button that is most comfortable for you, *then* lift up on the release handle. You can now swing the gate open for walk-thru convenience.

#### To close gate

Swing gate shut. Lower release handle back in place. You may need to press gently against gate until you hear the handle click into place.

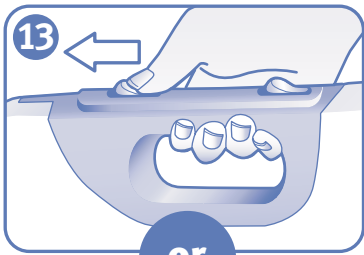
To verify that gate is locked, gently pull or push against it.

#### To temporarily remove gate for pressure mount use

The All-Clear Swing Gate can be easily removed from the brackets for use as a pressure mount gate in another room. To temporarily remove gate, simply open the gate and press the hinge pin release slider down to lower hinge pin on top of gate. Lift gate up and out of brackets. Then follow “Pressure mounting/Adjusting width” instructions.

**NOTE:** In pressure mount mode, gate no longer swings open.

**IMPORTANT:** The gate should be checked periodically for general condition with particular attention to the security of the attachments and operation of locking devices.



or



**NOTE FOR HARDWARE INSTALLED GATE:** Follow steps 1-5 to adjust the width of your gate to finish installation.

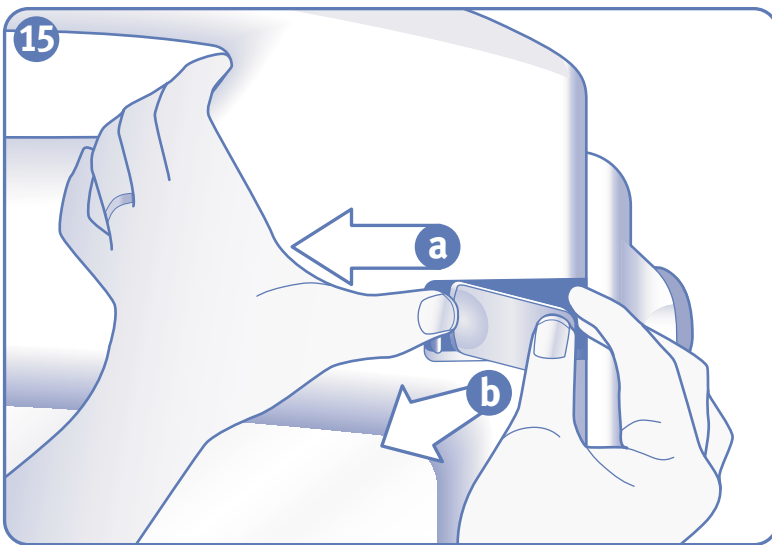
Place the gate in a doorway or hallway that is at least 27.5 inches wide but no wider than 42.5 inches.

**IMPORTANT:** Hold the gate upright during installation, flush against floor.

**NOTE:** Do not use pressure mount mode at top of stairs. Hardware is included for top of stair use.

1. Holding the release handle with one hand, **first** use your thumb to push and slide the release button that is most comfortable for you, as shown in diagram 13, **then** lift up on the release handle, as shown in diagram 14.

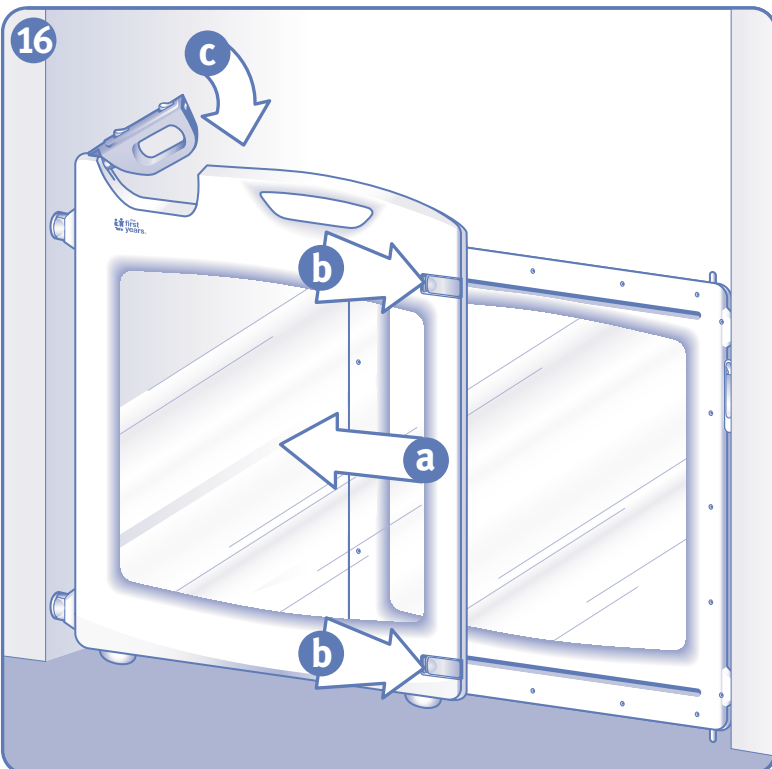
**NOTE:** We designed the All-Clear Swing Gate with two release buttons to make it easy to open regardless of where you are standing when you want to open the release handle. You only need to push and slide ONE release button in order to lift the release handle.



2. Open the top and bottom adjustment buckles as shown in diagram 15.

- a. Push the adjustment buckle tab to the left and hold in place.
- b. Now lift up the adjustment buckle to release. Be sure to release both the top and bottom buckles.

**TIP:** You may find it difficult to open the adjustment buckles. The tightness you may encounter is an intentional safety measure that we've built-in for optimal child security. To make it easier to open the adjustment buckles, try placing the gate flat on the floor with buckle side facing up towards you. Then, follow steps a. and b. above and continue with the installation.



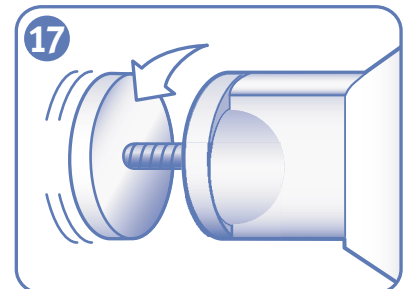
**NOTE:** Illustration 16 shows the gate pressure mounted.

3. With the release handle up in the unlocked position, slide panels (A) until the adjustment knobs hit the door jam, as shown in diagram 16.

**TIP:** Lean over the top of the gate. Grasp each panel in center at point A and simultaneously push each panel to slide in opposing directions.

**IMPORTANT:** Always hold the gate in the center when sliding the panels out to adjust.

**NOTE:** If the gate is being pressure mounted in an opening with baseboards or other uneven surface, you may need to adjust the adjustment knobs for an optimal fit, as shown in diagram 17.



4. While holding gate on point A, press the adjustment buckles (B) down to lock panels in place at the desired width as shown in diagram 16.

5. Lower release handle (C) down to lock as shown in diagram 16. Pads will press up against mounting surface. Your gate is now locked!

### To use

#### To open gate

Holding the release handle with one hand, **first** use your thumb to push and slide the release button that is most comfortable for you, **then** lift up on the release handle. With both hands grasping the carry handle, slide gate up and out of doorframe.

#### To reinstall gate

Lift release handle up. Slide gate back into place in the doorframe and push release handle down to lock.



### **WARNING:**

When repositioning, always check that the adjustment knobs are in firm contact with the doorframe and that the release handle is in the locked position. ALWAYS retest the gate for security after positioning.

## To clean

Wash with warm water using mild liquid soap. Use a soft cloth to avoid scratching the panels. Rinse with clear water and wipe dry with a soft cloth.

**NOTE:** Never use solvents, chemicals, scouring powders or sharp tools when cleaning the panels or gate.

## Service

Replacement or additional parts should only be obtained from The First Years.

**Please contact our Parent Service Center: 1-800-533-6708 or [www.thefirstyears.com](http://www.thefirstyears.com).**

### Satisfaction Guaranteed

If you are not completely satisfied with this product, please call our Parent Service Center at the toll-free number above.

**USA/Canada:** The First Years Inc., Avon, MA 02322-1171, U.S.A. Toll-free: 1-800-533-6708.

This product complies with the following standard: ASTM F1004

©2004 The First Years Inc., Avon, MA 02322-1171

4996.06.29.04