

TEXAS MEMORY SYSTEMS, INC.

RamSan-325/325c

User's Manual



Version 2.2

Any trademarks or registered trademarks used in this document belong to the companies that own them.

Copyright © 2005, Texas Memory Systems, Inc. All rights are reserved. No part of this work may be reproduced or used in any form or by any means - graphic, electronic, or mechanical, including photocopying, recording, taping, or information storage and retrieval systems - without permission of the copyright owner.

Table of Contents

Preface	1
Document Overview	1
Conventions	1
Safety Precautions	1
Revision History	2
Chapter 1 – Introduction	3
1.1 Overview	3
1.2 System Components	4
1.3 Power	4
1.4 Non-Volatility	4
1.5 Configurable Backup	5
1.6 Performance	5
Chapter 2 – Installation	6
2.1 Electro-Static Discharge Warning	6
2.2 Battery Warning	6
2.3 System Inspection	6
2.4 Rack Mounting	8
2.5 Connecting the Fibre Channel Ports	8
2.6 Connecting the Power Supplies	8
2.7 Turning on the System	10
2.8 System Initialization	10
Chapter 3 – Management Tool Overview	12
3.1 Front Panel Display	12
3.2 Text Management Interface	14
3.3 Web Management Interface	17
3.4 SNMP	18
Chapter 4 – Administration Functions	19
4.1 Security	19
4.2 Configuring System Date and Time	25
4.3 Configuring Ethernet Settings	26
4.4 Power Down Settings	32
4.5 Installing New Feature Licenses	34
4.6 Saving and Uploading Configuration Options	35
Chapter 5 – Monitoring Functions	38
5.1 Viewing System health and status	38
5.2 Statistics	54
5.3 Logs	62
Chapter 6 – LUN Configuration	65
6.1 A Example LUN Configuration	66
6.2 Adding LUNs	67
6.3 Viewing LUN Status / LUN Map	69
6.4 Linking LUNs to/from Fibre Channel Controllers	71
6.5 Changing LUN Numbers	74
6.6 Resizing LUNs	75
6.7 Managing Access Lists	76
6.8 Deleting LUNs	79
6.9 Setting Backup Mode	80
6.10 Initializing LUNs	82
Chapter 7 – Fibre Channel Controller Configuration	83
7.1 Changing Fibre Channel Topology and Link Speed	83
7.2 Configuring High Availability	85
7.3 Resetting a Fibre Channel Controller	89
7.4 Clearing Fibre Channel Controller Statistics	90
7.5 Advanced Fibre Channel Controller Options	90

Chapter 8 – SNMP Configuration	92
8.1 Enabling SNMP settings	92
Chapter 9 – System Maintenance	97
9.1 Updating System Firmware	97
9.2 Hot Swapping Power Supplies	99
9.3 Hot Swapping Disk Drives	100
9.4 Batteries	101
9.5 Fans	101
Chapter 10 – Troubleshooting	102
10.1 System Event Log	102
10.2 Support Log	102
10.3 System Diagnostics	102
10.4 Still Having Problems...	102
Chapter 11 – Specifications	103
11.1 Physical Characteristics.....	103
11.2 Operating Environment	103
11.3 Non-operating Environment.....	103
Appendix A – RamSan-325 Series Replacement Parts	104
Appendix B – FCC/Safety Notices.....	107
Appendix C – Warranty, Maintenance, Field Service, and Repair Policy	108
Appendix D – Serial Port Settings	111
Appendix E – SNMP Trap Definitions.....	112

Preface

Document Overview

This document provides operating procedures for the RamSan-325/325c. It covers installation, management, and troubleshooting issues.

Conventions

This document uses the following textual conventions:

Select	Front panel button descriptions
Ethernet Setup	Front panel text (menu items)
lunconfig	Management port (serial/Telnet) commands and text.

Safety Precautions

PLEASE OBSERVE ALL DUE SAFETY MEASURES WHEN WORKING WITH SENSITIVE ELECTRICAL EQUIPMENT. READ AND FOLLOW ALL INSTRUCTIONS AND SAFETY PRECAUTIONS BEFORE OPERATING THE UNIT.

- Before servicing the unit, shutdown the unit and remove power cords from both power supply modules. Wait 15 seconds before servicing the unit.
- **DO NOT REACH INSIDE THE PROTECTIVE ENCLOSURE AFTER REMOVING A POWER SUPPLY MODULE.**
- Caution for service personnel: Power supply modules include Double Pole/Neutral Fusing.
- **RISK OF FIRE OR EXPLOSION IF BATTERY IS REPLACED BY AN INCORRECT TYPE. DO NOT DISPOSE OF USED BATTERIES IN A FIRE. THEY MAY EXPLODE. CHECK WITH LOCAL AUTHORITIES FOR DISPOSAL INSTRUCTIONS.**
- Only use TMS factory certified replacement parts. Faulty components should be replaced as soon as possible.

Revision History

The following table describes revisions to this document:

Version	Comments	Date	Firmware
1.0	Initial release	08/15/2003	
1.1	Added component photographs Added information about using the help function in the text management interface. Added Appendix A.	09/11/2003	
1.2	Updated power supply details.	10/02/2003	
1.3	Added details for the RamSan-300	10/07/2003	
1.4	Updated Figure 2-1: RamSan-320 Layout Added Appendix B: FCC Notice Added Appendix C: Warranty, Maintenance, Field Service, and Repair Policy Added battery maintenance information to Section 2.2 Updated all system screenshots Updated text management interface menu items Added LED configuration to Section 3.1.1	11/21/2003	
1.5	Added Section 5.1.2: Identifying a RamSan Updated Figures 3-2, 5-1, 5-2, 5-6, and 5-10	12/08/2003	
1.6	Updated Section 11.1 with voltage specs Updated Appendix B	01/07/2004	
1.7	Updated screen shots with enhanced web monitor interface graphics Added Section 4.2: Configuring system date and time Added web instructions to Section 7.2: Configuring high availability Added web instructions to Section 5.3.3: Clearing logged ECC errors Added Sections 4.3.2, 6.10, 7.3, 7.4, & 9.1 Updated Sections 1.3, 1.5, 1.6, 3.1.1, 5.1.2, 5.3, 6.2.1, 6.3.2, 6.9.2, 8.3, 8.4, and 8.5	01/28/2004	
1.8	Added Section 3.4 – SNMP Added Chapter 8 – SNMP Configuration Added Appendix D – Serial Port Settings Added Appendix E – SNMP Trap Definitions Added a description of SMART technology to Section 9.3 Added Section 4.5 – Adding new feature licenses	04/28/2004	2.4.0
2.0	Updated all system screenshots		2.5.0
2.1	Added support for RamSan-325		
2.2	Merged documents for RamSan-325/325c	06/01/2005	2.7.0

Chapter 1 – Introduction

1.1 Overview

The RamSan-325 series solid-state disk uses DDR RAM (memory) as its primary storage. This technology enables practically instantaneous data access, which results in dramatic application performance increases.

Texas Memory Systems (TMS) designed the RamSan to be highly available and fault tolerant. The system has higher availability than RAID or JBOD systems because the primary storage media is DDR RAM, which does not require moving parts. Additionally, DDR RAM has a very high mean time between failures (as high as several hundred years) according to some studies. The mechanical components in the RamSan are redundant and hot swappable.

The RamSan-325's internal disk drives provide a fully non-volatile solution. The RamSan-325 has two modes of operation: Active Backup™ mode and DataSync mode. For more information on these modes, see *Section 6.9 - Setting Backup Mode*.

The RamSan complements existing disk drives, JBOD, or RAID, in performance sensitive applications. Servers perceive the RamSan as another attached SCSI disk drive. For some applications, the RamSan is the only storage system required. For applications that store terabytes of data, storage administrators add the RamSan to systems that include RAID or JBOD.

Connect the RamSan via Fibre Channel to host servers, NAS filers, or storage network switches and hubs. If you have specific compatibility questions, please contact Texas Memory Systems.

Use the RamSan in a variety of applications. If hard disk drives slow down your application, there is a good chance that the RamSan can speed it up.

1.2 System Components

The system components for the RamSan-325/325c include:

- Main system memory ranging from 16 to 64 Gigabytes (325c) or 32 to 128 Gigabytes (325)
- One to four Fibre Channel controllers
- Dual, redundant hot-swappable power supplies
- Redundant fans
- Ethernet monitoring port
- Serial monitoring port
- Front panel display for monitoring and configuration
- SNMP based monitoring
- Java-based Web monitoring
- Internal backup RAID
- Redundant batteries (N+1)

1.3 Power

The RamSan includes two power supplies. Only one power supply is needed to run the system. The power supplies are auto-ranging (they accept either 110 or 220 VAC power).

The RamSan-325's power supplies are connected to an internal battery pack. The battery pack provides up to 30 minutes of operation after a power failure. In the event one battery or power supply fails, the other functional power supply and battery combination handles the system operation. You can monitor power supply temperature and voltages from the system monitoring software.

If a RamSan-325 loses power, it operates for five minutes before shutting down. The shutdown process involves synchronizing data to the internal hard disk drives. If the system determines that the battery life will not last the full shutdown delay period, it starts the synchronization process.

When power is restored, the RamSan-325 restores system memory with the data from the internal hard disk drives and then resumes normal operations. In addition, the system begins recharging the batteries. You can monitor the battery charge levels using the bundled remote monitoring software.

1.4 Non-Volatility

By utilizing internal hard drives and batteries, the RamSan-325 combines the performance of DDR RAM storage with the non-volatile nature of hard disk drives. Texas Memory Systems equips the RamSan-325 with an internal backup RAID. The backup RAID can operate at about 200 MB/sec during operation. In order to operate the drives after a power failure occurs, the RamSan-325 contains redundant batteries. When fully functional and fully charged, the batteries are able to provide at least 30 minutes of operation.

The system monitors the internal disks and batteries for a failure condition. In such an event, it notifies the operator of an error through the front panel display and the management software.

1.5 Configurable Backup

The RamSan-325 allows the administrator to set backup modes for each LUN individually or system wide.

Active Backup™ mode (optional)

This ideal mode for most users is only available from Texas Memory Systems. In Active Backup mode, the RamSan uses available internal bandwidth (i.e. performance not utilized by the applications) to constantly backup memory to the disks. The system automatically optimizes this operation to backup the maximum amount of data at any given time without affecting performance. This means that at any one time, most of the data already resides on disk. Upon emergency or shutdown, the unit need only finish the backup that is already nearly completed. Active Backup is an optional feature on the RamSan-325; therefore, some systems may not display this option.

Datasync mode

In DataSync mode, reads and writes are done only to memory. The disks remain offline during normal operation. If power loss occurs and the shutdown timer reaches zero, or the user requests a shutdown, the system takes the Fibre Channel interfaces offline and synchronizes all data to the internal hard drives.

None (Volatile) mode

This operational mode disables the backup functionality for the LUN making it completely volatile. In the case of system shutdown or failure, all data stored in the selected LUN will be lost intentionally.

1.6 Performance

The RamSan-325 series solid state disk is the ultimate in performance storage. With up to eight Fibre Channel ports in a 3U package, the RamSan-325 series delivers unparalleled bandwidth and I/O. The RamSan-325 series is capable of 250,000 IOPS (I/O operations per second) and 1,500 MB/sec of read or write performance.

Chapter 2 – Installation

2.1 Electro-Static Discharge Warning

Important:

Please take full E.S.D. precautions if it is necessary at any time to come into contact with any circuit boards, components or connectors. Electrostatic discharge can damage the components used in the RamSan and its interfaces.

2.2 Battery Warning

The internal batteries in the RamSan-325 are charged with enough voltage to power a fully loaded system for approximately 30 minutes. However, the batteries may not be fully charged when you install your system. Therefore, ensure that your batteries are fully charged before you use the system where there is risk of power failure.

The following battery charge times apply to a fully loaded RamSan-325: With one hour of charge time, the batteries provide nine minutes of runtime. With two hours of charge time, the batteries provide 17 minutes of runtime. With three hours of charge time, the batteries provide 20 minutes of runtime.

As a precaution, replace the RamSan's batteries every two years. To obtain spare or new batteries for your RamSan, contact Texas Memory Systems.

2.3 System Inspection

TMS ships the RamSan with a packing list. Ensure that you have received all of the components listed.

- 1) Examine the external chassis for any damage that might have occurred during shipping.
- 2) Ensure that both power supplies are locked securely in place and that the internal hard disk drives have not come loose.
- 3) Inspect the interface plate for any screws that might have loosened during shipping.
- 4) Inspect the front panel display for damage.
- 5) Report any meaningful damage to Texas Memory Systems.

Figure 2-1 shows an overhead view of the layout of the RamSan-325 components.

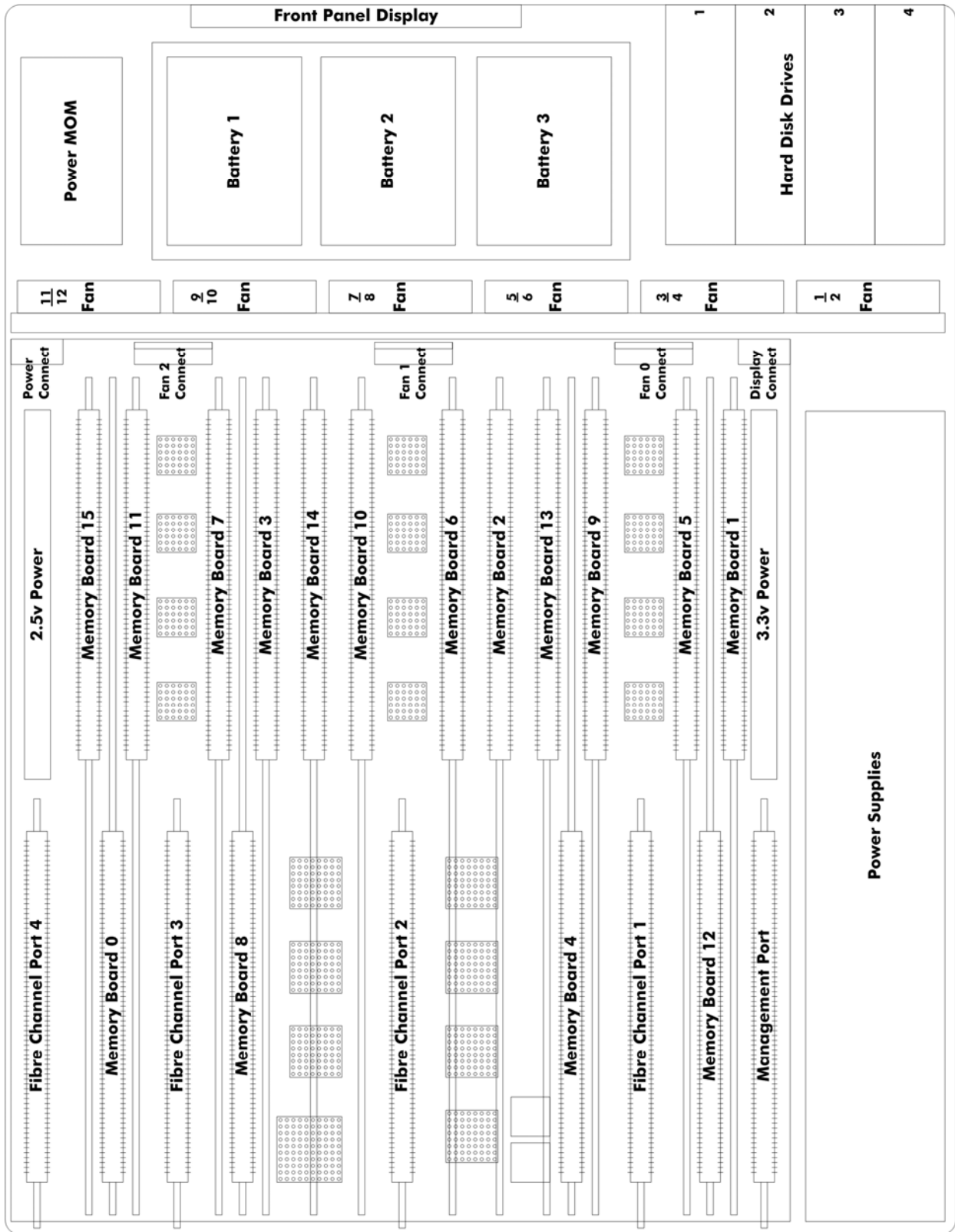


Figure 2-1: RamSan-325 Layout

2.4 Rack Mounting

The RamSan-325 series solid state disk is a 3U rack-mountable system. TMS ships the system with the slides and equipment needed to install it into a standard 19" rack.

2.5 Connecting the Fibre Channel Ports

After you have inspected the system and properly mounted it, connect the Fibre Channel ports on the RamSan to your server or to a Fibre Channel switch.

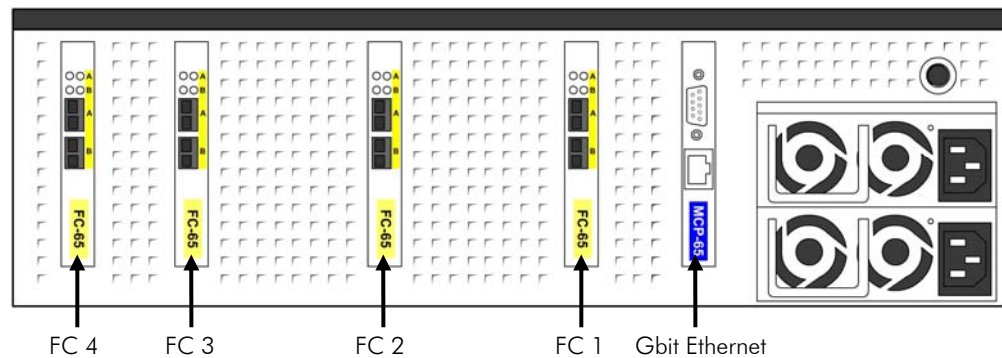


Figure 2-2: RamSan Interface Plate

Your system includes from one to four FC65 Fibre Channel controllers.

Figure 2-2 shows the port layout for the RamSan. Each controller has two Fibre Channel ports: A and B, on the top and bottom respectively. The FC65 ports on the system are capable of connecting to point-to-point, arbitrated loop, and switched fabric topologies at either 2-Gigabit or 1-Gigabit speeds.

2.6 Connecting the Power Supplies

TMS equips the RamSan with dual redundant hot-swappable power supplies that operate on 110/220 VAC line power. A fully loaded RamSan requires approximately 350 watts of power. Using the provided AC power cords, connect both power supplies to a power source. Install the socket outlet in an easily accessible location near the equipment.

For normal system operation, connect both power supplies to an external power source. Since the power supplies are redundant, you may remove line power from one without any interruption in system operation. If a RamSan-325 completely loses external power, it will shutdown after a defined amount of time.

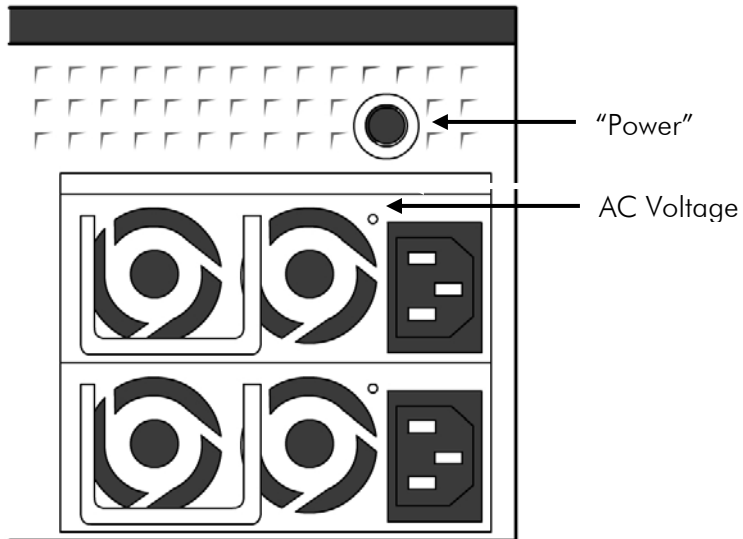


Figure 2-3 RamSan Power Supply

The power supply includes the following button and indicators:

"Power" switch

The large black button above the power supplies acts as an on/off switch and will silence the warning buzzer.

- The button provides a means to activate the power supplies (turn them on) after a system shutdown. If the system shuts down for any reason other than a power failure, press the "Power" switch to turn the system back on. If power is restored after a power failure or both power cords are removed and then reinserted, the system automatically powers on.
- When a power supply fails, is removed, or loses AC power, the power supplies beep. If the buzzer sounds, silence it by pressing the "Power" switch once or by correcting the problem. The silencing lasts until the problem is corrected. Once the problem is corrected, the buzzer will sound again if another power failure occurs.
- In addition, the button allows the user to force a hard-shutdown of the system. Only perform a hard-shutdown when you are unable to perform a manual shutdown and after backing up all of the data to external storage. To perform a hard-shutdown, unplug or remove both power supply modules. Then, hold down the "Power" switch for approximately 5 seconds to shutoff the batteries and cause the system to lose power.

Warning:

A hard-shutdown will cause data loss and should only be used when the user is unable to perform a manual shutdown and all the data has been backed up to external storage.

AC Voltage indicator light

When the power supply is connected to AC power and is operating properly, the indicator light attached to each power supply is green. If the green light is not on, either the power supply is disconnected from an AC power source or the power supply has failed. Check the power cable to determine if power has been lost to the supply or whether the supply has failed. The front panel display, Text Management Interface, or Web interface, may provide additional information regarding the problem.

2.7 Turning on the System

The RamSan automatically powers on when power is connected to the system. The only time the system does not power on automatically is when a user has initiated a manual shutdown or the system has powered off due to some failure other than AC power loss. In the event this happens, press the "Power" button, which is the large black button above the power supplies. Please see *Section 2.6 Connecting the Power Supplies*.

2.8 System Initialization

The front panel display shows the boot process's current state. Once the power is connected, the system turns on automatically and the front panel display begins the power on sequence. The following happens automatically (you can also monitor this boot sequence externally through the serial port):

1. Once AC power is connected, the RamSan will power-up with the TMS logo. The front panel displays the memory size.

```
TMS | | | | | | | | | | ( )  
Texas Memory Systems
```

```
TMS | | | | | | | | | | ( )  
Memory Size: 128GB
```

Soon after that, you will see "**Booting...**" and then the system displays the IP address.

```
Booting ...
```

```
IP Address Acquired:  
000.000.000.000
```

2. In a RamSan-325, the front panel displays "**Restoring Data**" and cycles between a progress bar and an estimated time until completion. Administrators may use this to determine how much time before the system is on-line. This information is also available through the Text Management Interface. This process will take approximately 12 minutes for a fully loaded system.

```
Restoring Data ... 73.8%
■■■■■■■■■■■■■■■■■■■■
```

```
Restoring Data ... 73.8%
Est. Time Left    04:03
```

If all system LUNs are set to Volatile mode, the front panel displays "**Initializing**" instead of "**Restoring Data**."

3. Once the system has restored data, the front panel displays "**System Status: GOOD**" and shows the performance bars for each Fibre Channel port. The numbers represent the Fibre Channel Controllers. If a controller is not installed, the number and corresponding performance will not display. The top bars represent the port A and the bottom bars represent port B.

```
System Status:      GOOD
1== 2== 3- 4==
```

The system is now ready for normal operation.

Chapter 3 – Management Tool Overview

3.1 Front Panel Display

The Front Panel Display provides a quick and easy way view the RamSan's status. It displays the current progress of disk synchronization and shows system warnings and failures.

The RamSan's front panel allows you to:

- Inspect the state of the system
- Change the method of IP address assignment
- Shutdown the system

Figure 3-1 displays the RamSan-325's front panel:

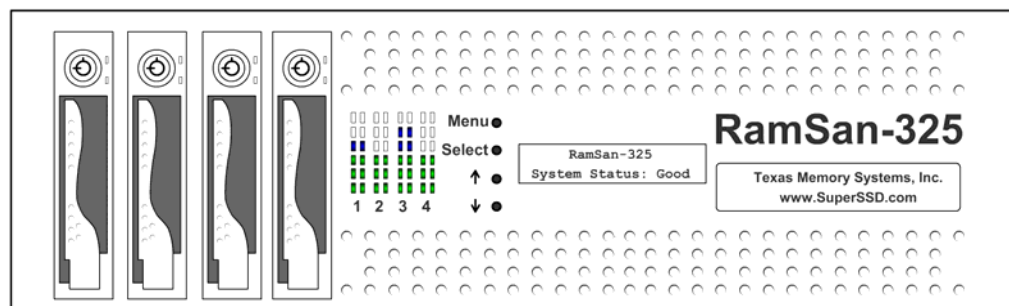


Figure 3-1: RamSan-325 Front Panel

Four buttons located to the left of the display are used to make selections:

- Menu** The **Menu** button has two functions:
- Function 1:
On any of the status or performance displays, pressing the "**Menu**" button launches the RamSan Main Menu.
 - Function 2:
Escape function. Once the menu is open, pressing "**Menu**" returns the user to the prior screen.

- Select** When a menu item is on the display, pressing "**Select**" will either: execute that menu option or proceed to the next layer in the menu. If the menu is not selected, this button is disabled.

- ↑** The "**↑**" button scrolls up through the menu. The "**↑**" button is also used cancel certain commands, as indicated on the display. If the menu is not selected, this button is disabled.

↓ The “↓” button scrolls down through the menu. The “↓” button is also used confirm certain commands, as indicated on the display. If the menu is not selected, this button is disabled.

3.1.1 Front Panel menu system layout

The following details the menu system of the front panel display:

Main Menu

System Information

Firmware Version

Memory Size

LUNs Configured

IP Address

of Controllers

FC Firmware

System Uptime

Ethernet Setup

Show Current Config

Ethernet Address

Subnet Mask

Gateway

Hostname

Ethernet Config

Hardware Address

Set IP Config

Static

IP

Subnet Mask

Gateway

DHCP

None

No Change (Exit)

Restart Network

Exit Menu

Active Monitor Mode/Deactivate Monitor

Manual Shutdown

LED Display

Set LED Mode

Display Bandwidth

Display IOPS

Performance Demo

LED Test Pattern

Disable LEDs

Exit Menu

Set LED Brightness

LED Brightness [Level]

Exit Menu

Display logo

Exit Menu

3.2 Text Management Interface

The RamSan's management port allows you to manage, configure, and monitor system behavior.

You may connect to the management port with either a DB-9 serial cable or an RJ-45 Ethernet cable.

3.2.1 Connecting using a terminal program

To connect to the RamSan using a serial port connection, use a dumb terminal or a terminal emulation program such as Windows™ HyperTerminal. Set your baud rate to 9600 with 8 data bits, 1 stop bit, no parity, and no flow control.

To connect to the serial port, use the DB-9 non-null serial cable supplied with the system.

3.2.2 Connecting using Telnet

Once the administrator configures the Ethernet port on the RamSan using either the front panel or the serial port, you may remotely monitor the system using a Telnet session. Set your terminal settings to VT100 mode.

In order to use the Ethernet port, first configure the IP address for the RamSan by using the front panel display or from the serial port. For complete instructions for configuring the Ethernet, please refer to *Section 4.3 – Configuring Ethernet Settings*.

3.2.3 General interface layout and instructions

TMS designed the management program as a text based GUI. This program displays all of the user's possible choices in a series of menus. The user may select menu items by entering the number of the menu item or by using the arrow keys and the [ENTER] key.

For a detailed description of each menu item, arrow down to the item and press the [H] key to display help text.

```

*** RamSan-325 Monitor ***
Texas Memory Systems, Inc.
System software version: 2.6.0
Capacity: 131072 MB
IP Address: 10.0.30.114
System Status: GOOD
State: Ready

-1: LUN setup
2: Controller setup
3: Health and status
4: Management setup
5: Log files
6: Power down system
Q: Exit

Press "H" at any time to view help on the currently highlighted menu item

```

Figure 3-2: Text Management Interface

When the user selects some menu items, the program displays sub-menus, as shown in *Figure 3-3: Text Management Interface Sub-Menu*:

```

*** Controller Setup ***
Controller 1 -- Primary (Active), Version: b.49
          Channel A          Channel B
WWN:      20:01:00:20:c2:03:25:96  21:01:00:20:c2:03:25:96
Node name: 10:00:00:20:c2:03:25:96  10:00:00:20:c2:03:25:96
Topology:  Auto (No link)          Auto (No link)
Link speed: Auto (No link)          Auto (No link)
Loop ID:   N/A                     N/A

-1: Select controller
2: Change topology
3: Change link speed
4: Change ALPA assignment
5: Configure failover
6: Reset controller
7: Clear statistics
S: Save changes and exit
Q: Discard changes and exit

```

Figure 3-3: Text Management Interface Sub-Menu

When in a sub-menu, the user can select "C" to cancel or press the "ESC" key to return to the menu.

Once satisfied with the changes made on a menu, the user must select "S" to save all of the changes. Pressing "ESC" or selecting "Q" disregards any changes and returns to the previous menu.

TMS designed some screens to display status information and display data as in *Figure 3-4: Text Management Interface Status Screen*:

```

*** System Health Status ***

System states:
MCP:          WARN          Temperature:  GOOD
Fans:         GOOD          Power:        GOOD
Batteries:    GOOD          Memory:       GOOD
PSU state:    GOOD          Battery 1:    READY
FC 1:         GOOD          Battery 2:    READY
FC 2:         GOOD          Battery 3:    READY
FC 3:         NOT PRESENT   Disk Array:   GOOD
FC 4:         NOT PRESENT

^Q^: Quit, ^I/^D^: Inc/Dec update interval, ^V^: View details, ^R^: Refresh
█

```

Figure 3-4: Text Management Interface Status Screen

On status screens, the program provides the user with several options:

- Press 'Q' to exit the menu
- Press 'I' or 'D' to increment or decrement the interval between statistics updates in ¼ second intervals
- Enter 'R' to immediately refresh the data on the screen
- Enter [SPACE] to view additional information

To exit the Text management interface, enter 'Q' from the Main Menu.

```

*** Ethernet Setup ***
IP Assignment mode:  DHCP
Hostname:           ssd
Ethernet MAC address: 00:20:c2:03:25:96
IP Address:         10.0.40.3
Netmask:            255.255.255.0
Gateway:            none
Link speed/duplex:  AutoNegotiate

-1: IP assignment mode
2: Set hostname
S: Save changes, restart th
R: Restart the network and
M: Modify speed/duplex sett
Q: Discard changes and exit

-1: Static
2: DHCP
3: Disable ethernet
C: Cancel

```

Figure 3-5: Scrolling Sub-Menus

Some of the sub-menus have a large numbers of items and therefore scroll. In *Figure 3-5: Scrolling Sub-Menus*, notice to the right of the choices there is a '-', 'v', or '^'. In our example we see a '-' and 'v'. 'v' and '^' indicate that it is possible to scroll down and up, and '-' indicates you have reached either the top or bottom of the sub-menu.

3.3 Web Management Interface

Another way to get an overview of what is happening in a system is to use the web management interface. At a glance, this JAVA utility shows the status of all components and combines the information found in the Text Management Interface. In addition, the Web interface includes complete management and configuration features.

To access the web management interface, enter the RamSan's IP address in a web browser. The web management interface is password protected. Enter your system login and password to access the web management interface.

3.3.1 General interface layout and instructions

Texas Memory Systems designed the web management interface as a metaphor for the actual system components. For detailed information, the user simply clicks on the component. Clicking on the management port also displays additional information about the system's actions.

Some of the components have multiple 'tabs' of information.

The web interface outlines all failed components in red and all components with warnings in yellow.



Figure 3-6: Web Management Interface

3.4 SNMP

RamSans support the Simple Network Management Protocol (SNMP), which is the dominant network management protocol. The industry has accepted this protocol due to its relative simplicity. The SNMP standards provide a framework for the definition of management information along with a protocol for the exchange of that information. The RamSan-325 Series is compatible with SNMP V2c.

The SNMP model contains “managers” and “agents.” A manager is a software module responsible for managing the configuration on behalf of the network management application end users. Agents are devices, such as the RamSan, which are responsible for maintaining local management information and delivering that information to a manager via SNMP. Both the manager (via polling) and the agent (via a trap) can initiate management information exchanges.

Managers can access statistical information from the RamSan through its management information base (MIB). In addition, the RamSan can issue up to thirteen traps. For more information about configuring SNMP settings, see *Chapter 8 – SNMP Configuration*.

Chapter 4 – Administration Functions

4.1 Security

The RamSan has several features that allow the administrator to control system access, including password protected access and the ability to disable remote access via Telnet, Web, or SNMP.

4.1.1 Logging into the system

The RamSan has one account: "admin."

4.1.2 Set password

Since it is possible to access the RamSan remotely through the management port, TMS includes a password feature for system security. The default password for the "admin" account is "ssd"

Logging in directly through the serial console automatically bypasses the password feature, which allows a system administrator access to the RamSan if the password is forgotten or lost.

Via Web Interface

To change the administrator password via the web interface:

- Click on the “**Management Control Processor**” graphic
- Click the “**General Config**” tab
- Enter your old password; The system requires your old password for security reasons
- Enter your new password
- Confirm the new password
- Click the “**Change**” button

The system immediately changes the administrator password.

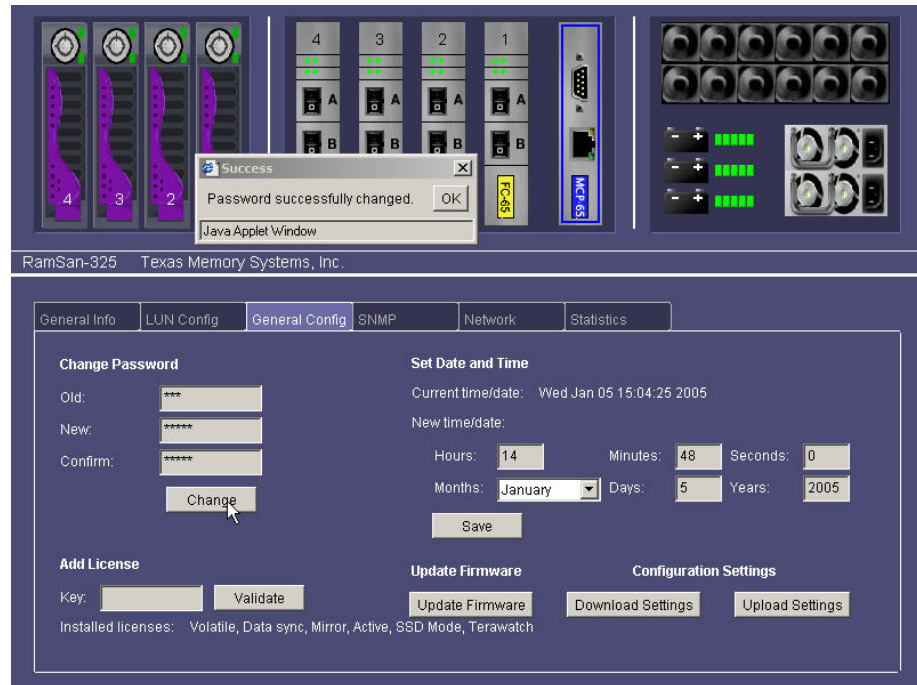


Figure 4-1: Password Change via Web Management Interface

Via Text Management

To change the administrator password via Text Management Interface:

- From the **Telnet Main Menu**, select **“Management setup”**
- Select **“Change password”**
- Enter the admin password and press [ENTER]

If you are not logged in through the console, you must verify your password. For security reasons, the system does not display the typed letters when typing in passwords.

```
*** Management Setup ***

Telnet: Enabled
Web:    Enabled
SNMP:   Enabled

Enter admin password:

-1: Change password
2: Disable telnet
3: Disable web
4: Disable SNMP
5: Configure SNMP
6: Configure ethernet
7: Manage system licenses
8: Set system date/time
9: Save changes and exit
Q: Discard changes and exit
```

Figure 4-2: Password Change

4.1.3 Enable/disable Telnet

The system allows the administrator to disable Telnet to prevent users from accessing the system through Telnet.

Note:

The RamSan does not allow you to disable access to the console. This provides a method to re-enable the Telnet, Web, and SNMP.

Via Web Management

To enable/disable Telnet via the web interface:

- Click on the “**Management Control Processor**” graphic
- Click on the “**Network**” tab

To enable Telnet, check the “**Allow Telnet**” checkbox and press the “**Save**” button.

To disable Telnet, uncheck the “**Allow Telnet**” checkbox and press the “**Save**” button.

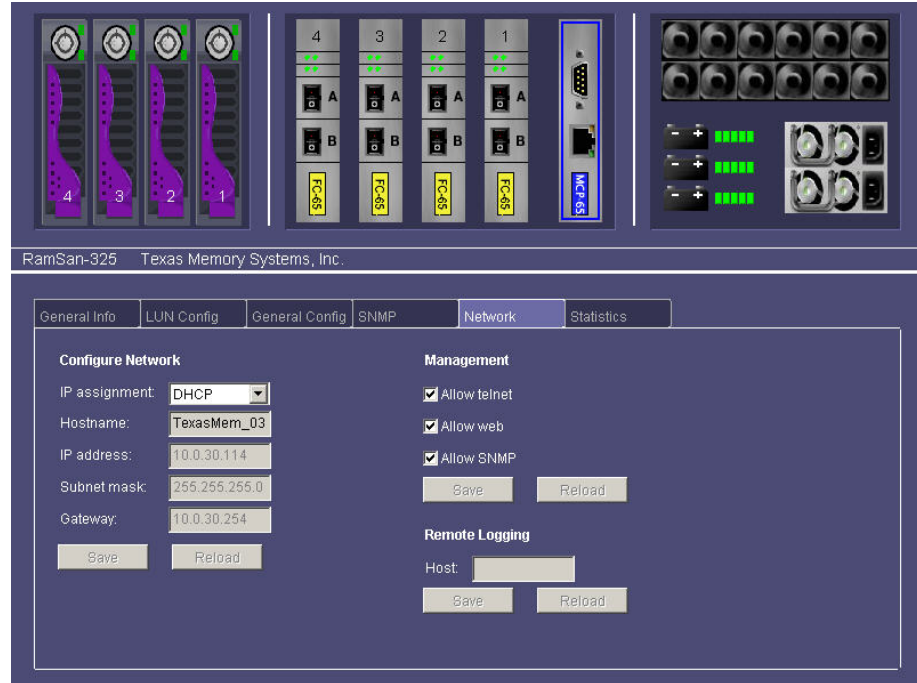


Figure 4-3: Enable/Disable Telnet

Via Text Management

- From the **Telnet Main Menu**, select **“Management setup”**
- Select **“Enable/Disable Telnet.”** If Telnet is enabled, your option will be “Disable Telnet” and visa versa.
- Press the “→” key or [ENTER] to toggle between the sections
- Select **“Save changes and exit”** to save the changes.

The menu displays the current Telnet status above the menu options, as shown in *Figure 4-4: Telnet Setup*. Users currently connected through Telnet remain connected until their session ends.

```
*** Management Setup ***

Telnet: Enabled
Web:     Enabled
SNMP:    Enabled

1: Change password
2: Disable telnet
3: Disable web
4: Disable SNMP
5: Configure SNMP
6: Configure ethernet
7: Manage system licenses
8: Set system date/time
S: Save changes and exit
Q: Discard changes and exit
```

Figure 4-4: Telnet Setup

4.1.4 Enable/disable Web Interface

The system allows the administrator to disable Web access to prevent users from accessing the system through the Web interface.

Via Web Management

To disable the web interface via the web interface:

- Click on the "**Management Control Processor**" graphic
- Click on the "**Network**" tab

To disable the web interface, uncheck the "**Allow Web**" checkbox and press the "**Save**" button.

Via Text Management

- From the **Telnet Main Menu**, select "**Management setup**"
- Select "**Enable/Disable Web**"; If Web access is currently enabled, your option will be "Disable Web" and visa versa.
- Press the "→" key or [ENTER] to toggle between the sections
- Select "**Save changes and exit**" to save the changes.

The menu displays the current Web Access status above the menu options.

4.1.5 Enable/disable SNMP

The system allows the administrator to start and stop the SNMP agent.

Via Web Management

To enable/disable SNMP via the web interface:

- Click on the "**Management Control Processor**" graphic
- Click on the "**Network**" tab

To enable SNMP, check the "**Allow SNMP**" checkbox and press the "**Save**" button.

To disable SNMP, uncheck the "**Allow SNMP**" checkbox and press the "**Save**" button.

Via Text Management

- From the **Telnet Main Menu**, select "**Management setup**"
- Select "**Enable/Disable SNMP**"; If SNMP is currently enabled, your option will be "Disable SNMP" and visa versa.
- Press the "→" key or [ENTER] to toggle between the sections
- Select "**Save changes and exit**" to save the changes.

The menu displays the current SNMP Access status above the menu options.

4.2 Configuring System Date and Time

The RamSan uses the system date and time to update the event log. This feature aids in troubleshooting.

4.2.1 Set Date and Time

Via Web Interface

To change the system date and time via the web interface:

- Click on the “**Management Control Processor**” graphic
- Click the “**General Config**” tab
- Enter the date and time under the “**New time/date**” field.
- Click the “**Save**” button

The system immediately changes the date and time. The new time appears next to “**Current time/date.**”

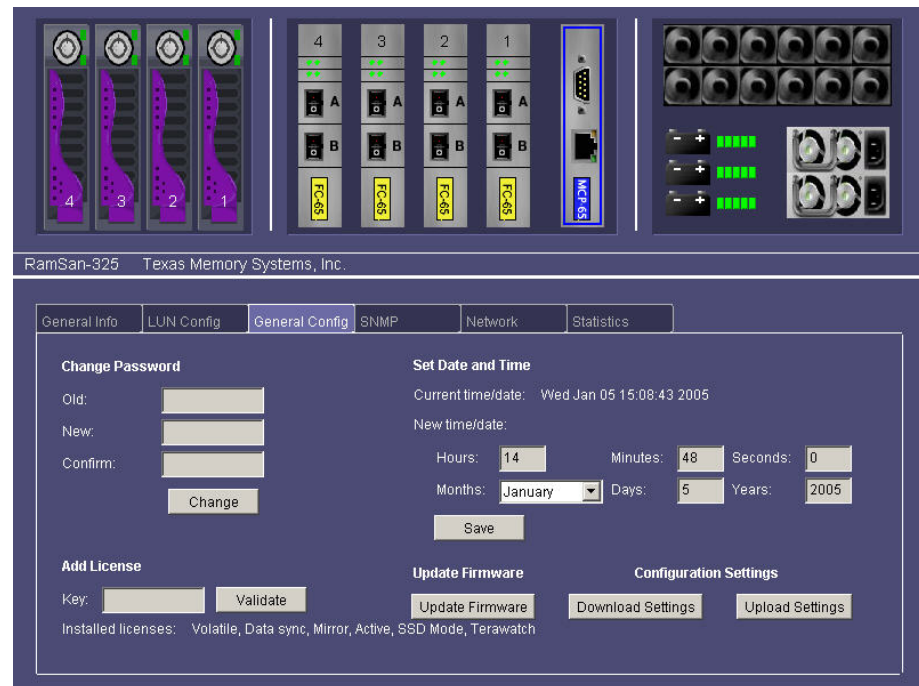


Figure 4-5: Date/Time Change via Web Management Interface

Via Text Management

To change the system time via Text Management Interface:

- From the **Telnet Main Menu**, select "**Management setup**"
- Select "**Set system date/time**"
- Select "**Set the time**"
- Set the time and press [ENTER]
- Select "**Set the date**"
- Set the date and press [ENTER]
- Select "**Save changes and exit**"

```
*** System Time/Date ***
Current Date/Time: Wed Jan 28 10:42:04 2004

-1: Set the time
 2: Set the date
 S: Save changes and exit
 Q: Discard changes and exit
```

Figure 4-6: Password Change

4.3 Configuring Ethernet Settings

The RamSan allows system monitoring and configuration through the serial port and the Ethernet port. To access the system's Ethernet port, the administrator must assign the RamSan an IP address, subnet mask, and possibly a gateway. The administrator may assign the IP address in one of three ways: Static IP, DHCP, or No Ethernet. The default factory setting is DHCP.

For any questions regarding IP assignment values, please consult your network administrator.

4.3.1 Configuring Ethernet Settings via Front Panel

To setup the Ethernet via the Front Panel, use the arrow buttons to cycle through the top-level menu options until the display shows "**Ethernet Setup.**" Use the **Select** button to choose this option and continue with the configuration. You may now use the arrow buttons to scroll through the following menu options:

- Displays a list of the current IP configuration, hostname, IP address, subnet mask, gateway address (if applicable), and hardware Ethernet address.

Show Current Config
- To continue setting up the Ethernet configuration

Set IP Config
- Shuts down and restarts the Ethernet port using the current IP assignment configuration

Restart Network
- Exits the setup menu.

Exit Menu

Use the arrow buttons to scroll up and down through the list. Pressing the "**Menu**" button returns to the previous menu, and pressing the "**Select**" button exits the menu system. To continue setting up the Ethernet configuration, select "**Set IP Config.**"

After selecting "**Set IP Config,**" you may use the arrow buttons to cycle through:

- Enables you to set a static IP address for the RamSan.

Static
- Sets the IP configuration to DHCP

DHCP
- Disables Ethernet

None
- Returns to the Main Menu without making any changes

No change

Talk to your network administrator for the proper IP assignment type. The default factory setting is DHCP. Use the **"Select"** button to select the desired method of IP assignment. If you did not choose **"Static IP"** you are asked to confirm the selection with the **"↓"** button.

To configure the RamSan with a static IP, the system requires the IP address, subnet mask, and a possibly a gateway address.

After you have chosen **"Static IP," "Ethernet IP"** replaces the top line of the display, and the display prompts you to enter an IP. Use the **"↑"** or **"↓"** buttons to cycle through the numbers **"0"** through **"9"**. To select the value, use the **"Select"** button. Then, the input prompt moves to the next character position. To back up a space, press the **"↑"** and **"↓"** button simultaneously. Repeat this procedure until you have entered the 4-byte address. Press the **"Menu"** button at any time to cancel the Static IP assignment.

Ethernet IP —

After you have finished entering the IP, the top line of the front panel changes to **"Subnet Mask."** Using the same procedure as entering the IP address, enter the subnet mask.

Subnet Mask —

The final value you must enter is the **"Gateway Address."** If the RamSan is on a private network and this value is not needed, enter the value **"0.0.0.0"** to tell the RamSan to ignore this entry.

Gateway Address —

After entering all three values, the display prompts you to confirm the command with the **"↓"** button.

After confirming the new IP assignment mode, the display indicates “**Shutting Down Network...**” followed by a success or failure message. Then, the display indicates “**Saving IP Config...**” followed by a success or failure message. Next, the RamSan attempts to start the network with the new settings, indicated on the front panel display with “**Restarting Network...**” Upon success, the system displays the new IP address on the front panel for 15 seconds or until any button is pressed.

Shutting Down Network...

Saving IP Config...

Restarting network...

New IP Address:
000.000.000.000

If the network fails to start, check the Ethernet connection and contact your system administrator. If the system successfully saved the IP configuration, you may simply select the “**Restart Network**” option from the “**Ethernet Setup**” menu instead of re-selecting the same IP configuration.

4.3.2 Configuring Ethernet Settings via Web Management Interface

To setup the Ethernet via the Web Management Interface:

- Click the “**Management Control Processor**” graphic
- Click the “**Network**” tab
- Configure the Ethernet settings using the fields under “**Configure Network**”
- Click the “**Save**” button.

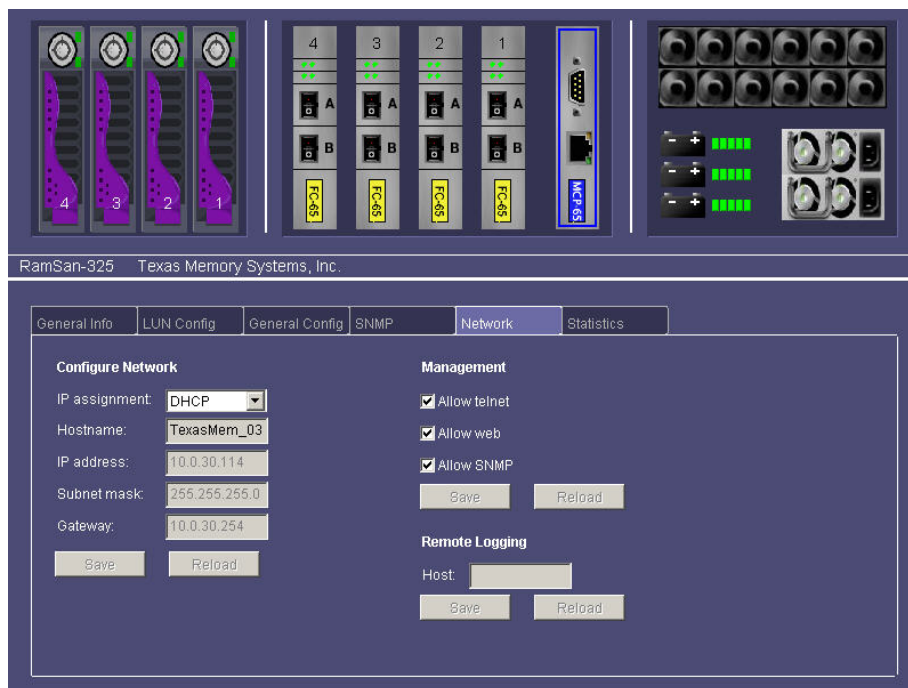


Figure 4-7: Web Management Ethernet Configuration

4.3.3 Configuring Ethernet settings via Text Management Interface

- From the **Telnet Main Menu**, select **“Management setup”**
- Select **“Configure Ethernet”**

```
*** Ethernet Setup ***
IP Assignment mode:  DHCP
Hostname:           ssd
Ethernet MAC address: 00:20:c2:03:25:96
IP Address:         10.0.40.3
Netmask:           255.255.255.0
Gateway:           none
Link speed/duplex:  AutoNegotiate

-1: IP assignment mode
 2: Set hostname
  S: Save changes, restart the network, and exit
  R: Restart the network and exit
  M: Modify speed/duplex settings
  Q: Discard changes and exit
```

Figure 4-8: Ethernet Setup

The system displays the “Ethernet Setup” screen, as shown in *Figure 4-8: Ethernet Setup*.

To change to IP assignment mode:

- Select **“IP assignment mode”**
- Select the appropriate assignment mode from the submenu
- If you choose **“DHCP”** or **“Disable Ethernet,”** then select **“Save changes, restart the network, and Exit”**

If the administrator sets the IP assignment mode to **‘Static’**, the ‘Change IP address’, ‘Change subnet mask’, and ‘Change gateway’ options appear, as shown in *Figure 4-9: Static IP Settings*:

```
*** Ethernet Setup ***
IP Assignment mode:  STATIC
Hostname:           ssd
Ethernet MAC address: 00:20:c2:03:25:96
IP Address:         <unknown -- unsaved changes exist>
Netmask:           <unknown -- unsaved changes exist>
Gateway:           none
Link speed/duplex:  AutoNegotiate

-1: IP assignment mode
 2: Set hostname
 3: Change IP address  [192,94,232,34]
 4: Change subnet mask [255,255,0,0]
 5: Change gateway    [none]
  S: Save changes, restart the network, and exit
  R: Restart the network and exit
  M: Modify speed/duplex settings
  Q: Discard changes and exit
```

Figure 4-9: Static IP Settings

To set the hostname:

- Select "**Select hostname**"
- Enter the hostname and press [ENTER]
- When all Ethernet setup is complete, select "**Save changes, restart the network, and Exit**"

4.4 Power Down Settings

The RamSan has features that allow the administrator to safely power down the system.

4.4.1 Manual shutdown

The administrator can shut down the RamSan manually from the front panel and via Text Management Interface. This procedure safely synchronizes all data in RAM to the internal hard disk drive storage.

In order to turn the RamSan back on after a manual shutdown, press the "Power" button on the power supplies. For additional details, see *Section 2.7 – Turning on the System*.

Important:

TMS recommends backing-up the contents of the RamSan to your server or another storage device as a fail-safe before performing a Manual Shutdown.

Via Front Panel Display

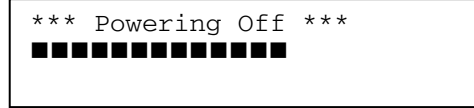
To shut down the system using the front panel, use the arrow buttons to cycle through the top-level menu to select "**Manual Shutdown.**" Use the "**Select**" button to select this menu item.

Manual Shutdown

The display prompts you to confirm that you wish to "**Power Off System.**" To cancel the shutdown, use the "↑" button to return to the main menu. To proceed with the shutdown, use the "↓" button to confirm the system power off.

Power Off System

Now, the front panel display indicates that the system is powering off. Depending on the system mode and the size of memory, this procedure may take a while. The front panel cycles between a power off status bar and an estimated time until the system completes the power off.



Via Web Management

To perform a manual shutdown via the web interface:

- Click on the "**Management Control Processor**" graphic
- Click on the "**General Info**" tab

Press the "**Shutdown**" button.

Via Text Management

To perform a manual shutdown via Text Management Interface:

- From the **Telnet Main Menu**, select "**Power down system**"
- Confirm the power down.

Once the user confirms the power down, the system powers off after completing all writes.

To resume operation, press the "Power" button to the left of the power supplies. For additional details, see *Section 2.7 – Turning on the System*.

4.4.2 Automatic shutdown

In the event that the system senses a high system temperature, power out of specs, or AC power is lost, the system will automatically initiate the shutdown procedure.

4.5 Installing New Feature Licenses

The RamSan allows the administrator to add license keys as new features become available.

4.5.1 Via the Web Interface

To add a new feature license via the Web Interface:

- Click on the “**Management Control Processor**” graphic
- Click on the “**General Config**” tab
- Type or paste the license key into the “**Key**” field.
- Click the “**Validate**” button

If the system accepts the license key, you will see a pop-up window stating, “License Added,” and the new feature will be listed with the other installed licenses. If the system rejects the license key, it will display a pop-up window stating, “Invalid key.”

You must close and then re-open your web browser before you can configure any LUNs using the new feature.

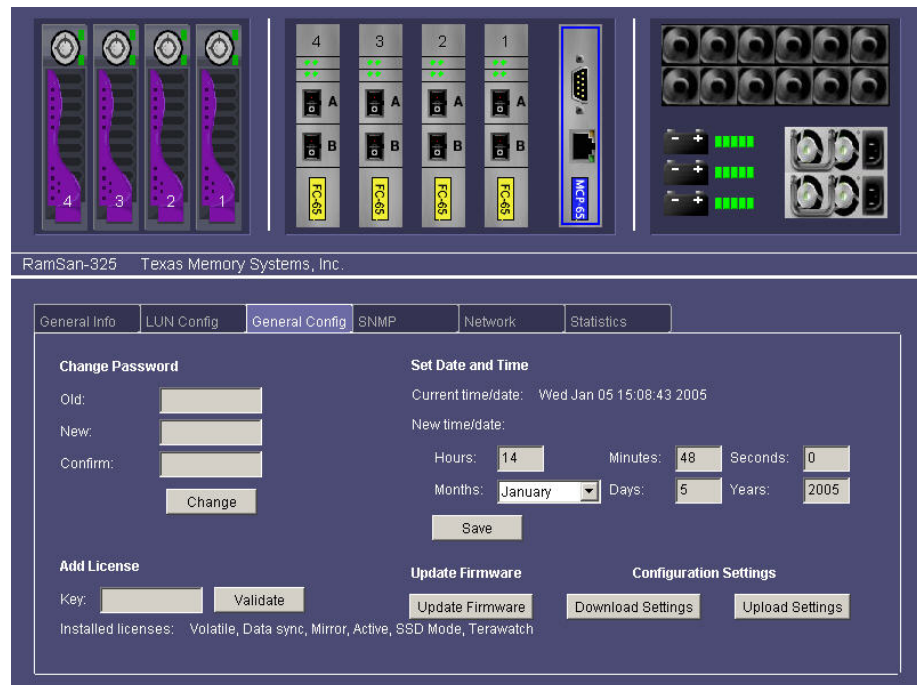


Figure 4-10: Adding licenses via the Web Interface

4.5.2 Via Text Management

To add a new feature license via the Text Management Interface:

- From the **Telnet Main Menu**, select “**Management setup**”
- Select “**Manage system licenses**”
- Select “**Add a feature license**”
- Type or paste the license key into the input box and press [ENTER]

If the system accepts the license key, the license manager screen will display a message at the bottom of the screen stating “Added feature: <feature name>.” If the system rejects the license key, it will display a pop-up box stating, “Invalid license entered.”

You must logout and then log back into the text management interface before you can configure any LUNs using the new feature.

```
*** License Manager ***

Currently installed licenses:
Volatile
DataSync
Mirror
Active Backup

Enter in the license

1: Add a feature
2: Remove a feature
Q: Exit to management setup menu
```

Figure 4-11: Adding licenses using the Text Management Interface

4.6 Saving and Uploading Configuration Options

The RamSan allows the administrator to save the system settings, including LUN configuration and Fibre Channel mapping, to ensure a rapid and safe recovery in case of a critical component failure.

Important:

Configuration options are specific to a particular version of RamSan firmware. You must save your configuration options each time you update your firmware.

4.6.1 Download Configuration Settings Via the Web Interface

To download the configuration settings via the Web Interface:

- Click on the “**Management Control Processor**” graphic
- Click on the “**General Config**” tab
- Click the “**Download Settings**” button

The web interface will generate the configuration file, and you will be asked where you would like to save the file.

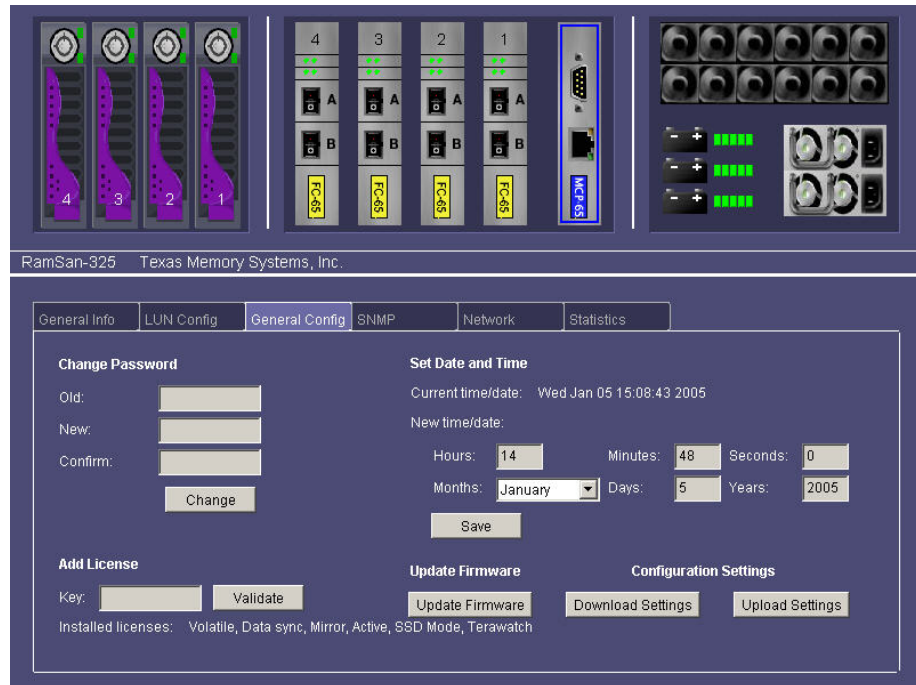
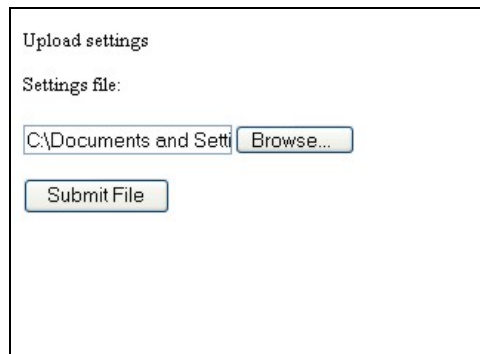


Figure 4-12: Configuration Settings

4.6.2 Upload Configuration Settings Via the Web Interface

To upload the configuration settings via the Web Interface:

- Click on the “**Management Control Processor**” graphic
- Click on the “**General Config**” tab
- Click the “**Upload Settings**” button
- The web interface will open a new browser window to facilitate uploading the configuration file. Browse for the saved configuration file and click the “**Submit File**” button.
- Confirm your system password and click the “**Upload**” button.
- Once the file has uploaded, click the “**Done**” button.
- To complete the file upload, enter your password to shutdown the system and click the “**Shutdown**” button. The changes will not take effect until you have completed a shutdown cycle.



Upload settings

Settings file:

C:\Documents and Sett

Figure 4-13: Upload Configuration Settings Step One

Chapter 5 – Monitoring Functions

5.1 Viewing System health and status

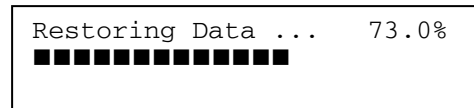
The RamSan makes it possible to view system health variables in a variety of ways. This allows you to easily determine that the system is in good health and, under rare circumstances, determine that a failure is imminent or has occurred.

5.1.1 Front Panel Monitoring

When the menu on the front panel is not in use, the display monitors various aspects of the system. The display presents the following information:

Restore/Synchronize Progress

During any synchronization or data restore, the front panel cycles between the operation progress and estimated time remaining until completion.



The system displays "**Restoring Data**" when restoring data from disk and displays "**Initializing**" when starting from a volatile state.

If the system is rebuilding the disk array, the system displays "**Array Rebuilding**." If the system is rebuilding a single disk, the front panel displays "**Disk # Rebuild**" indicating the disk number.

Status

The following status levels are possible:

“GOOD”

This is normal operation.

```
System Status:      GOOD
```

“WARNING”

Indicates that the RamSan has detected a system warning. Warning statements scroll across the front panel display.

```
System Status:      WARNING
Warnings: Fans slow
```

Possible warning examples:

- Pwr supply # removed
- AC lost at one or both power supplies
- One or both batteries are low
- Temperature warning
- One disk removed

“ERROR”

Indicates that the RamSan has detected a system failure. Error statements scroll across the front panel display.

```
System Status:      ERROR
Errors: Disk # Failed
```

Possible failure examples:

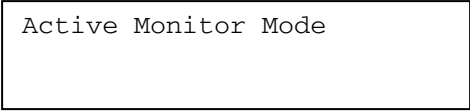
- Fan failure
- Power supply failed
- System overheated
- More than one disk removed or failed.

In the case of either system warnings or failures, the front panel display alternates between displaying status information and warning or failure messages every 10 seconds.

Fibre Channel Performance

The front panel display can show the Fibre Channel Controller performance:

From the front panel main menu, select
“Active Monitor Mode.”



Active Monitor Mode

This mode shows the performance bars for each Fibre Channel port. The numbers represent the Fibre Channel Controllers. If a controller is not installed, the number and corresponding performance will not display. The top bars represent the port A and the bottom bars represent port B.



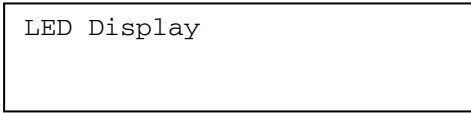
1==- 2=-- 3- 4===

The system stays in Active Monitor Mode for 10 minutes or until the user selects **“Deactivate Monitor”** from the front panel main menu.

LED Performance Monitoring

If your system is equipped with front panel LEDs, you can also view bandwidth and IOPS:

From the front panel main menu, select **"LED Display"**



LED Display

This mode uses the LEDs to display bandwidth or IOPS. To use the LEDs to display bandwidth, select **"Display Bandwidth."** To use the LEDs to display IOPS, select **"Display IOPS."**



Display Bandwidth

Once you select one of the above options, the display will ask you to **"Enable Autoblink."** If you enable autoblink, the top LED will blink (even with constant bandwidth or IOPS).

5.1.2 Identifying a RamSan

When you have more than one RamSan, the “Identify Device” feature helps you to physically locate which RamSan you are monitoring. This feature blinks the front panel display. The following demonstrates how to make the front panel display start and stop blinking.

Via Web Interface

To make the RamSan front panel blink via web interface:

- Click on the “**Management Control Processor**” graphic
- Click on the “**General Info**” tab
- Click the “**Identify Device**” button

The RamSan front panel will begin to blink. To make the front panel stop blinking, press any button on the front panel or click the “**Identify Device**” button again.

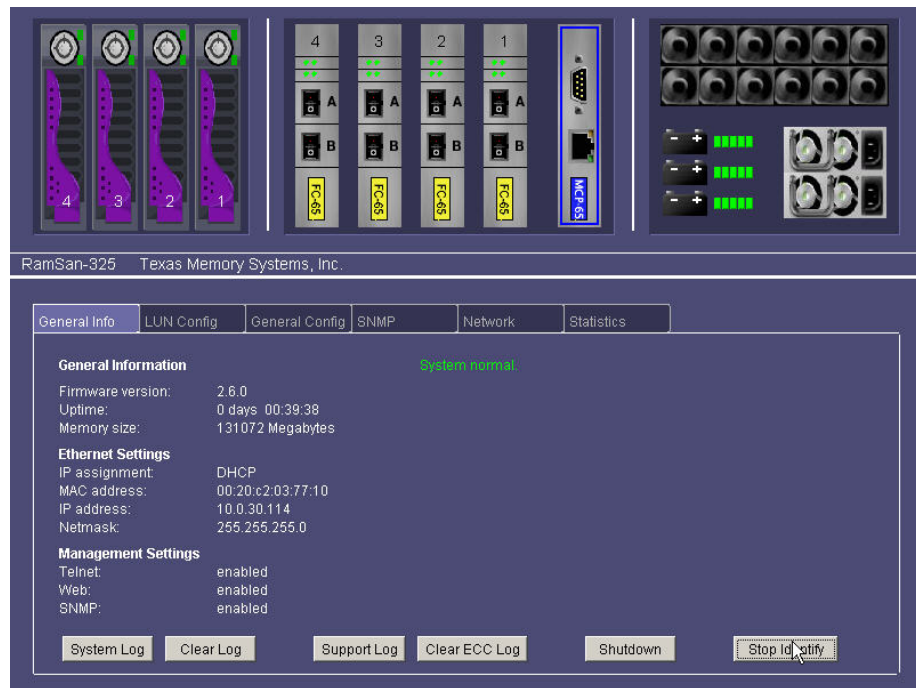


Figure 5-1: Identify Device button

5.1.3 Viewing System Uptime

The system uptime provides information about how long the system has been powered on.

Via Web Interface

To view the system uptime via web interface:

- Click on the “**Management Control Processor**” graphic
- Click on the “**General Info**” tab

The “**General Info**” screen displays the “**Uptime**” below “**Firmware version.**”

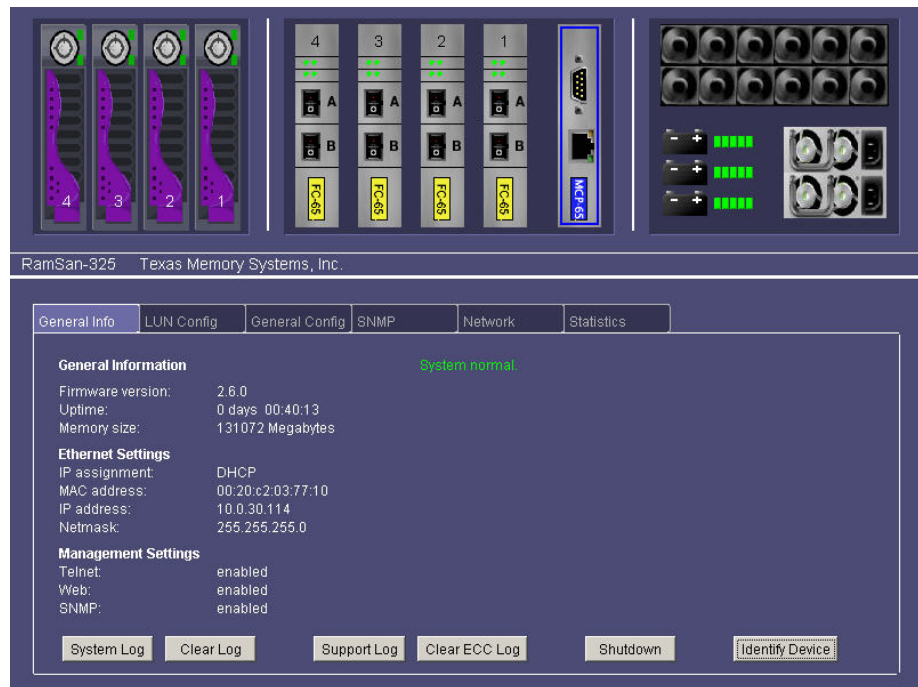


Figure 5-2: System Uptime Status

Via Text Management

To view the system uptime via Text Management Interface:

- From the **Telnet Main Menu**, select **"Health and Status"**

The system displays the current system uptime in days, hours, minutes and seconds at the top of the **"Health and Status"** screen, as shown in *Figure 5-3: Health and Status*:

```
*** Health and Status ***
System uptime: 000 days 23 hrs 40 mins 41 secs
State: Ready
System status: WARNINGS detected, check system monitor

-1: View system monitor
2: View controller status
3: View statistics
4: Clear ECC errors
5: System diagnostics
R: Refresh current screen
Q: Exit to main menu
```

Figure 5-3: Health and Status

5.1.4 Viewing System Health

The system health allows the user to monitor vital system health statistics, such as general state information, voltages, temperatures, and fan speeds.

Via Web Interface

Information concerning the disks, batteries, power supplies, and fans are in separate locations through the Web interface.

Disks

- Click on the “**Disks**” graphic
- Click on the “**General Info**” tab



Figure 5-4: Disk Status via Web interface

Batteries

- Click on the “**Batteries**” graphic
- Click on the “**General Info**” tab

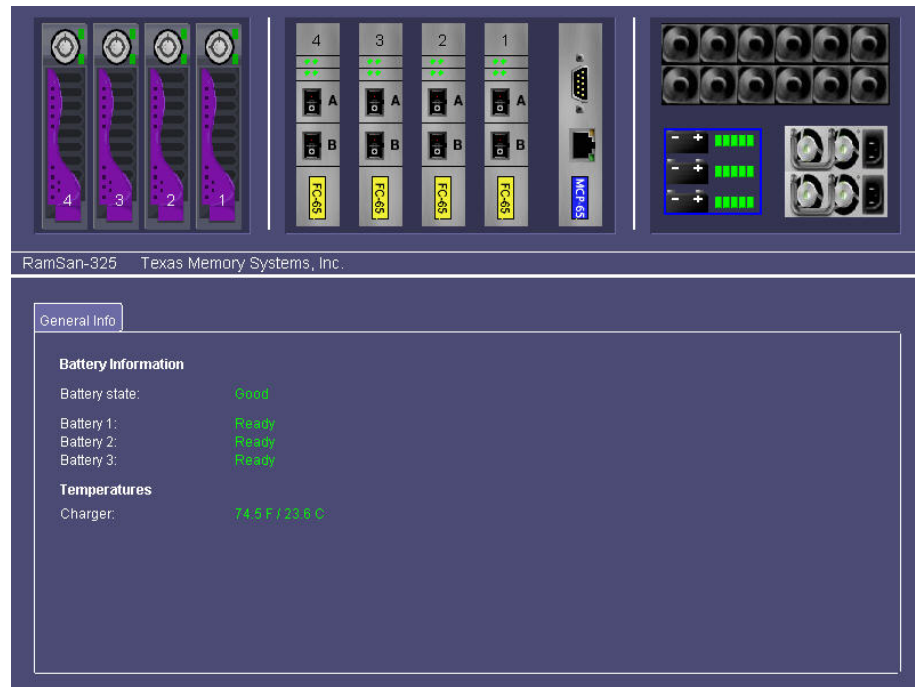


Figure 5-5: Battery Status via Web interface

Management Control Processor

To view the MCP status via web interface:

- Click on the “**Management Control Processor**” graphic
- Click on the “**General Info**” tab

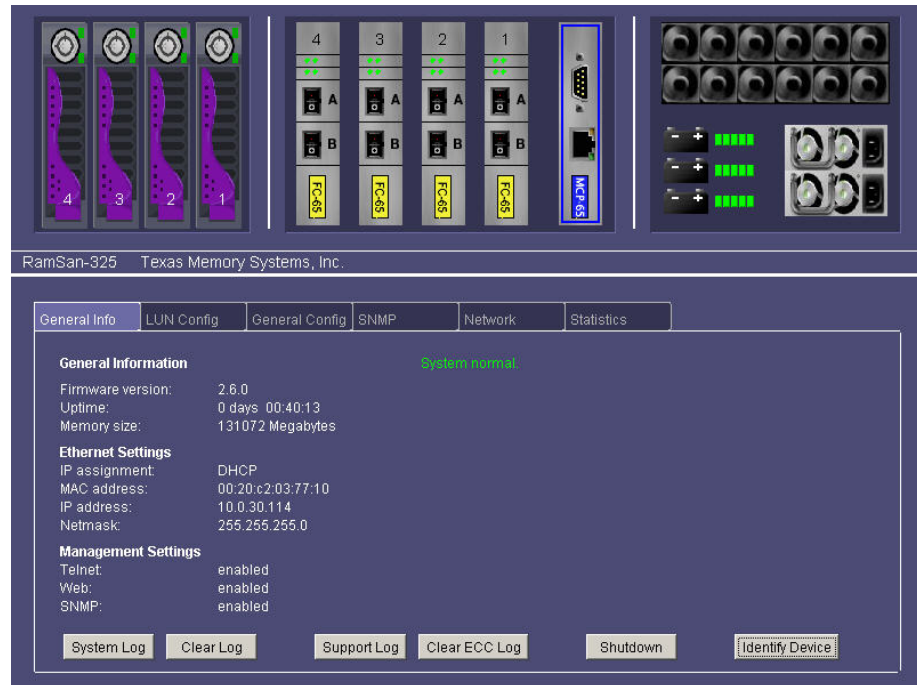


Figure 5-6: MCP General Info Tab for Status

Power Supplies

- Click on the “**Power Supply**” graphic
- Click on the “**General Info**” tab

RamSan-325 Texas Memory Systems, Inc.

General Info

Power Supply Information
Power supply state: **Good**

Voltages

12v:	12.0V
5v:	5.0V
3.3v:	3.3V
2.5v:	2.5V, 1.8V
1.5v:	1.5V

Temperatures

Pmom:	86.3F / 30.3C
Power Board 0:	92.1F / 33.4C
Power Board 1:	89.9F / 32.2C

Figure 5-7: Power Supply Status via Web Interface

Fans

- Click on the “**Fans**” graphic
- Click on the “**General Info**” tab

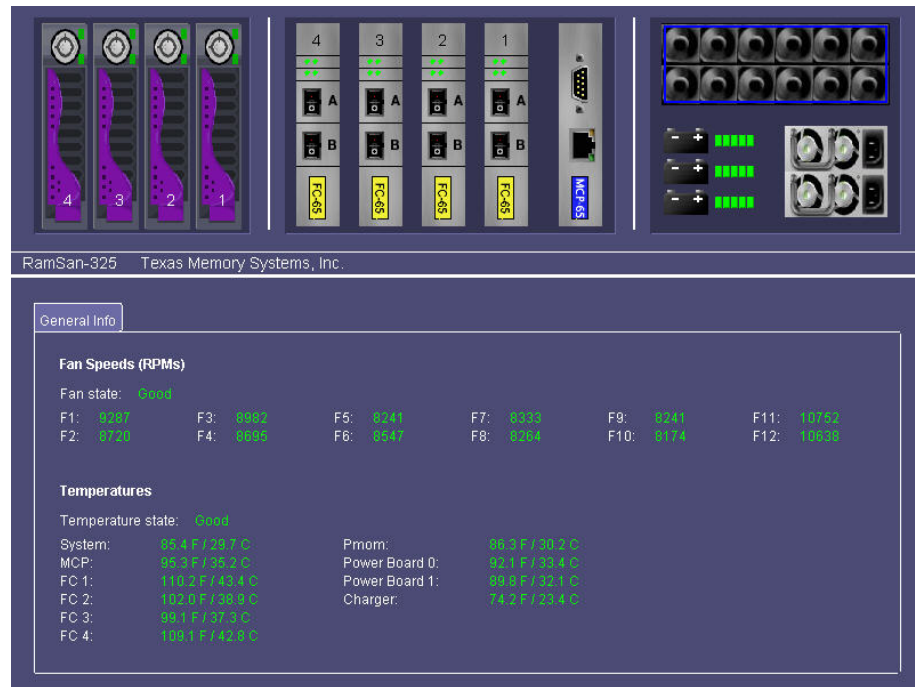


Figure 5-8: Fans Status via Web interface

Via Text Management

- From the **Telnet Main Menu**, select **“Health and Status”**
- Select **“View system monitor”**

```
*** System Health Status ***
System states:
MCP:          WARN          Temperature:  GOOD
Fans:        GOOD          Power:       GOOD
Batteries:   GOOD          Memory:     GOOD
PSU state:   GOOD          Battery 1:  READY
FC 1:       GOOD          Battery 2:  READY
FC 2:       GOOD          Battery 3:  READY
FC 3:       NOT PRESENT   Disk Array:  GOOD
FC 4:       NOT PRESENT

‘Q’: Quit, ‘I’/‘D’: Inc/Dec update interval, ‘V’: View details, ‘R’: Refresh
█
```

Figure 5-9: Text Management Interface System Health Status

The states are classified as “Good,” “Warn,” and “Error”:

“Good”

This states that everything is functioning under normal operating conditions.

“Warn”

This indicates a potential problem to look into, but the problem is not an immediate threat to system stability.

“Error”

This indicates that the component should be investigated immediately.

```

*** System Health Status ***
Voltages:      Voltage 3.3: (3.33V, 3.36V)   Voltage 2.5: 2.52V
                MOD5:      4.93V           MOD12:      11.98V
Temperatures:  System:      85.89F/29.94C   MCP:        90.84F/32.69C
                Battery:    78.12F/25.62C   Power board 0: 91.40F/33.00C
                Power board 1: 86.00F/30.00C   PMOM:       80.82F/27.12C
                FC 1:       102.20F/39.00C   FC 2:       103.55F/39.75C
Fans (RPMs):   ( 8902, 8310, 8174, 8403, 8130, 8427)
                ( 8902, 8287, 8427, 7937, 8264, 8264)
System messaging errors:      0
ECC errors:      Corrected: 0(0), Uncorrected: 0(0)
No luns currently configured.
'Q': Quit, 'I'/'D': Inc/Dec update interval, 'R': Refresh
█

```

Figure 5-10: Text Management Interface System Health Details

By pressing the “V” key while on the System Health Status screen, the system will display the System Health Details screen. Press the “Q” key to return to the System Health Status screen.

5.1.5 Viewing Detailed Fibre Channel Controller Status

Via Web Interface

The Web interface allows you to view all of the fibre channel information, but one fibre channel controller at a time.

- Click on one of the “**Fibre Channel**” graphics
- Click on the “**General Info**” tab

RamSan-325 Texas Memory Systems, Inc.

General Info | Controller setup | Available LUNs | Statistics

General Information

Firmware version: 2.57

	Channel A	Channel B
World wide name:	20:01:00:20:c2:03:77:10	21:01:00:20:c2:03:77:10
Node name:	10:00:00:20:c2:03:77:10	10:00:00:20:c2:03:77:10
State:	online_n_port 2Gb	online_n_port 2Gb
Link down count:	0	0
CRC errors:	0	0
Receive errors:	0	0

Hard Reset

Clear Stats

Figure 5-11: Fibre Channel Controller Status via Web Interface

Via Text Management

- From the **Telnet Main Menu**, select **“Health and Status”**
- Select **“View Controller Status”**

```
FC65 Controller 1 - Firmware version: 1.50
  Channel A: 20:01:00:20:c2:03:17:86   online   2Gb FAB
  Channel B: 21:01:00:20:c2:03:17:86   no light
FC65 Controller 2 - Firmware version: 1.50
  Channel A: 20:02:00:20:c2:03:17:86   online   2Gb PP
  Channel B: 21:02:00:20:c2:03:17:86   no light
FCxx Controller 3 -- Not installed
FCxx Controller 4 -- Not installed

Press any key to continue█
```

Figure 5-12: Fibre Channel Controller Status via Text Management Interface

5.2 Statistics

The storage administrator can monitor important statistics that define the level of system performance through the various management utilities. These statistics include Input and Output operations per second (IOPS) and bandwidth.

5.2.1 Viewing IO/Second Summary

Via Web Interface

- Click on one of the “**Fibre Channel**” graphics or the “**Management Control Processor**” graphic
- Click on the “**Statistics**” tab
- Click the radio button next to “**I Ops**”

The graphing tool provides the option to view read, write, and total IOPS, as well as a running average of each of these statistics. To decode the colors on the graphical display, view the legend below the check boxes.

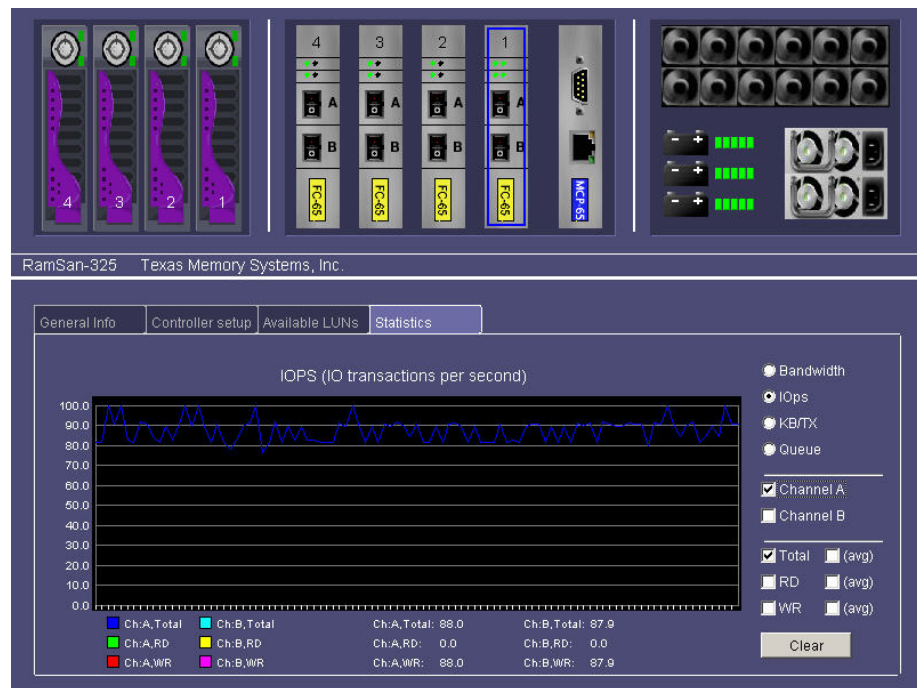


Figure 5-13: IOPS Performance Graph via Web Interface

Via Text Management

- From the **Telnet Main Menu**, select “**Health and Status**”
- Select “**View statistics**”
- Select “**IO/sec summary**”

The “**IO/sec Summary**” screen, as shown in *Figure 5-14: IO/sec Summary*, shows the IO read (r), write (w), and totals (t) for each

fibre channel controller in the system. It also displays a total across all of the FCs present.

```
*** IO/sec Summary ***
Controller 1:
  A: r: 620 w: 510 t: 1130
  B: r: 0 w: 0 t: 0
Controller 2:
  A: r: 0 w: 0 t: 0
  B: r: 0 w: 0 t: 0
Controller 3:
  A: r: 0 w: 0 t: 0
  B: r: 0 w: 0 t: 0
Controller 4:
  A: r: 0 w: 0 t: 0
  B: r: 460 w: 520 t: 980
Totals: r: 1080 w: 1030 t: 2110
'Q': Quit, I/D: Inc/Dec update interval, R: Refresh now
█
```

Figure 5-14: IO/sec Summary

5.2.2 Viewing Bandwidth Summary

Via Web Interface

To view the bandwidth statistics via the web interface:

- Click on one of the “**Fibre Channel**” graphics or the “**Management Control Processor**” graphic
- Click on the “**Statistics**” tab
- Click the radio button next to “**Bandwidth**”

The graphing tool provides the option to view read, write, and total bandwidth, as well as a running average of each of these statistics. To decode the colors on the graphical display, see the legend below the check boxes.

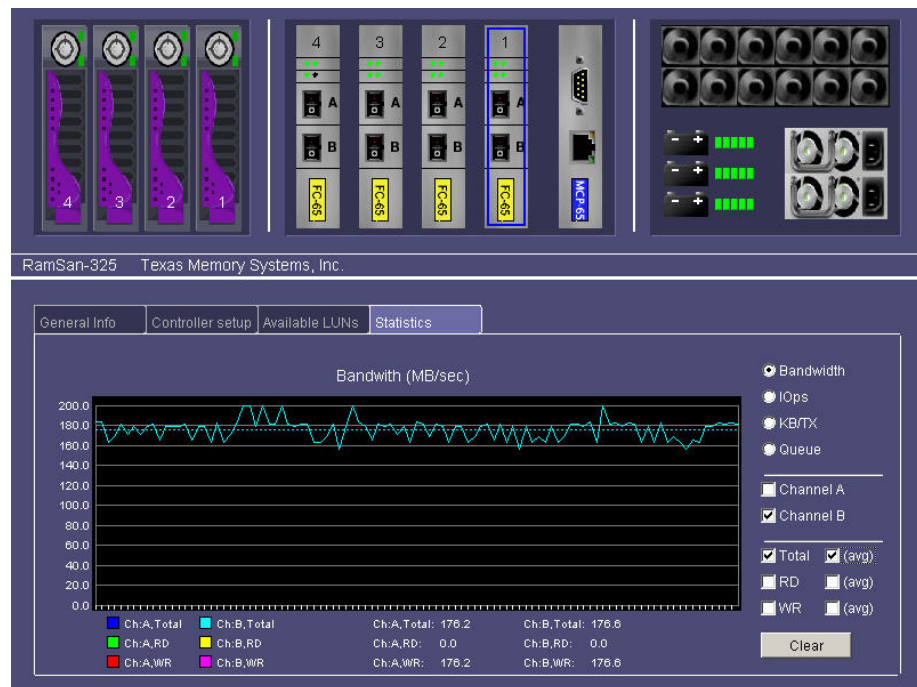


Figure 5-15: Bandwidth Performance Graph via Web Interface

Via Text Management

To view the bandwidth summary via Text Management Interface:

- From the **Telnet Main Menu**, select **“Health and Status”**
- Select **“View statistics”**
- Select **“Bandwidth summary”**

The **“Bandwidth Summary”** screen displays the bandwidth read (r), write (w), and totals (t) for each fibre channel controller in the system. It also displays a total across all of the fibre channel controllers present.

```
*** Bandwidth Summary ***
Controller 1:
  A: r: 150.00 w: 105.00 t: 255.00
  B: r:  0.00 w:  0.00 t:  0.00
Controller 2:
  A: r:  0.00 w:  0.00 t:  0.00
  B: r:  0.00 w:  0.00 t:  0.00
Controller 3:
  A: r:  0.00 w:  0.00 t:  0.00
  B: r:  0.00 w:  0.00 t:  0.00
Controller 4:
  A: r:  0.00 w:  0.00 t:  0.00
  B: r: 147.50 w: 112.50 t: 260.00
Totals:  r: 297.50 w: 217.50 t: 515.00
^Q^: Quit, I/D: Inc/Dec update interval, R: Refresh now
█
```

Figure 5-16: Bandwidth Performance via Text Management Interface

5.2.3 Viewing Transfer Size

View the transfer size to monitor how the file system is processing your data. This information can be used understand performance limitations.

Via Web Interface

To view the transfer size statistics via the web interface:

- Click on one of the “**Fibre Channel**” graphics or the “**Management Control Processor**” graphic
- Click on the “**Statistics**” tab
- Click the radio button next to “**KB/TX**”

The graphing tool provides the option to view read and write transfer size statistics, displayed as kilobytes per transfer command. In addition, this tool can display an average of each of these statistics. To decode the colors on the graphical display, see the legend below the check boxes.

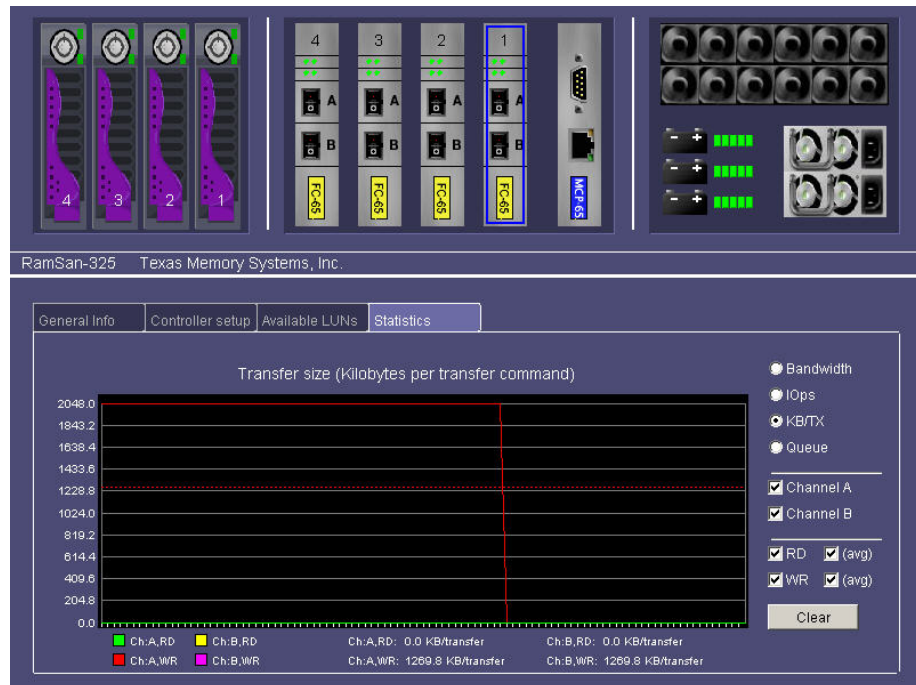


Figure 5-17: Transfer Size Graph via Web Interface

Via Text Management

To view the bandwidth summary via Text Management Interface:

- From the **Telnet Main Menu**, select **“Health and Status”**
- Select **“View statistics”**
- Select **“Transfer size summary”**

The **“Transfer Size Summary”** screen displays the transfer size read (r) and write (w) for each fibre channel controller in the system.

```
*** Transfer Size Summary ***
Controller 1:
  A: r: 256 w: 256
  B: r: 0 w: 0
Controller 2:
  A: r: 0 w: 0
  B: r: 0 w: 0
Controller 3:
  A: r: 0 w: 0
  B: r: 0 w: 0
Controller 4:
  A: r: 0 w: 0
  B: r: 243 w: 244
^Q^: Quit, I/D: Inc/Dec update interval, R: Refresh now
█
```

Figure 5-18: Transfer Size via Text Management Interface

5.2.4 Viewing Queue Depth Summary

Use the outstanding queue depth summary to analyze the utilization of the RamSan's resources. If the queue depth is below one, then the RamSan is not being fully utilized. If the queue depth is above or at one, then you may wish to add additional links or change other performance parameters to further utilize the RamSan.

Via Web Interface

To view the outstanding command queue depth statistics via the web interface:

- Click on one of the “**Fibre Channel**” graphics or the “**Management Control Processor**” graphic.
- Click on the “**Statistics**” tab
- Click the radio button next to “**Queue**”

The graphing tool provides the option to view the read and write command queue depth, as well as an average of each of these statistics. To decode the colors on the graphical display, see the legend below the check boxes.

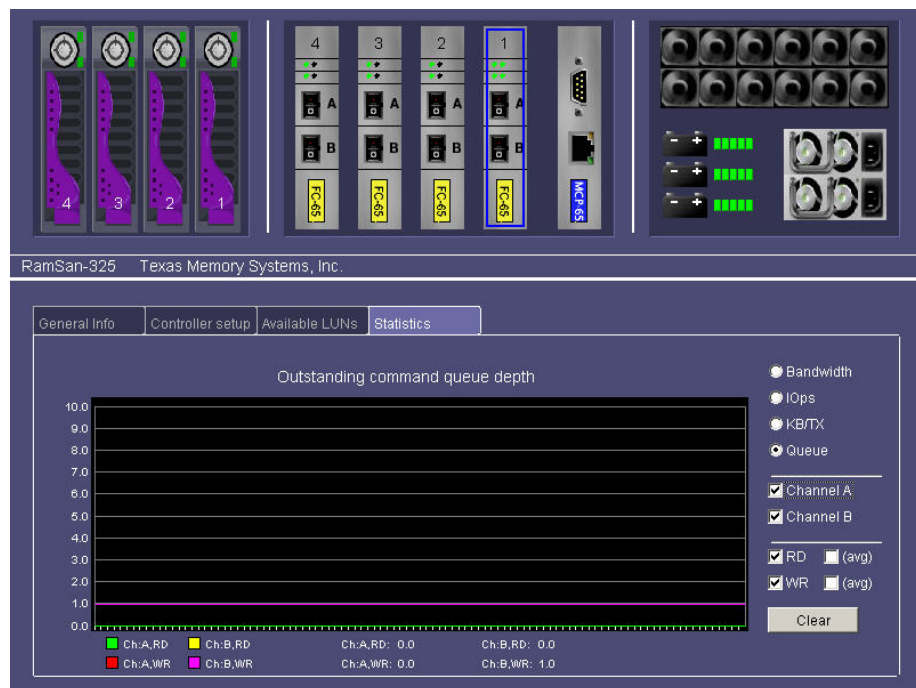


Figure 5-19: Queue Depth Statistics via Web Interface

Via Text Management

To view the bandwidth summary via Text Management Interface:

- From the **Telnet Main Menu**, select **"Health and Status"**
- Select **"View statistics"**
- Select **"Queue Depth summary"**

The **"Queue Depth Summary"** screen displays the outstanding command queue depth for read (r), write (w), and totals (t) for each fibre channel controller in the system. It also displays a total across all of the fibre channel controllers present.

```
*** Queue Depth Summary ***
Controller 1:
  A: r: 27 w: 0 t: 27
  B: r: 0 w: 0 t: 0
Controller 2:
  A: r: 0 w: 0 t: 0
  B: r: 0 w: 0 t: 0
Controller 3:
  A: r: 0 w: 0 t: 0
  B: r: 0 w: 0 t: 0
Controller 4:
  A: r: 0 w: 0 t: 0
  B: r: 0 w: 7 t: 7
Totals: r: 27 w: 7 t: 34
^Q^: Quit, I/D: Inc/Dec update interval, R: Refresh now
█
```

Figure 5-20: Queue Depth via Text Management Interface

5.2.5 Viewing Controller Details

Via Text Management

To view the controller details via Text Management Interface:

- From the **Telnet Main Menu**, select **"Health and status"**
- Select **"View statistics"**
- Select **"Controller details"**
- Select a fibre channel controller from the sub-menu.

The **"FC Overview"** screen shows a summary of IO/sec, bandwidth, queue depth, and transfer size for a particular controller.

```
*** FC Overview ***
Controller 1
Channel A      Channel B      Total
Read IO/sec:   297          0          297
Write IO/sec:  364          0          364
Total IO/sec:  661          0          661
Read bandwidth: 74.27       0.00       74.27
Write bandwidth: 90.76       0.00       90.76
Total bandwidth: 165.02      0.00       165.02
Read Queue Depth: 0          0          0
Write Queue Depth: 3          0          3
Total Queue Depth: 3          0          3
Read transfer size: 256          0
Write transfer size: 255          0
^Q^: Quit, I/D: Inc/Dec update interval, R: Refresh now
█
```

Figure 5-21: FC Overview Screen

5.3 Logs

In the case of a system failure, the system stores detailed information about the failure in the system event log. This information is invaluable in determining why a component failed and provides a timeline for the system administrator to follow. The support log provides a snapshot of the system settings and contains the ECC error log. Before contacting Texas Memory Systems, please have a copy of both logs available.

5.3.1 Viewing the System Event and Support Logs

Via Web Interface

To view the system event log or support log via the web interface:

- Click the **"Management Control Processor"** graphic
- Click the **"System Log"** or **"Support Log"** button.

Via Text Management

To view the system event log or support log via Text Management Interface:

- From the **Telnet Main Menu**, select **“Log Files”**
- Select **“Dump entire system log”** or **“Get support log”**

```
Sep 1 10:05:16 rs320-6 HW: <serial>[1]:LOGO_ACC(A,s:fffffc,d:610513)
Sep 1 10:05:19 rs320-6 HW: <serial>[1]:PLOGI(A,s:610a13,d:610513,v:20-09,cr:5,f
s:2048,nf:N,bbm:N,c3)
Sep 1 10:05:19 rs320-6 HW: <serial>[1]:PRLI(A,s:610a13,d:610513,t:0800,dov=0,if
n=1,tfn=1,cdm=0,drm=0)
Sep 1 10:05:19 rs320-6 HW: <serial>[1]:PLOGI(A,s:610413,d:610513,v:20-09,cr:5,f
s:2048,nf:N,bbm:N,c3)
Sep 1 10:05:19 rs320-6 HW: <serial>[1]:PRLI(A,s:610413,d:610513,t:0800,dov=0,if
n=1,tfn=1,cdm=0,drm=0)
Sep 1 10:05:19 rs320-6 HW: <serial>[1]:PRLD(A,s:610413,d:610513)
Sep 1 10:05:19 rs320-6 HW: <serial>[1]:LOGO(A,s:610413,d:610513)
Sep 1 10:05:19 rs320-6 HW: <serial>[1]:PLOGI(A,s:610b13,d:610513,v:20-09,cr:5,f
s:2048,nf:N,bbm:N,c3)
Sep 1 10:05:19 rs320-6 HW: <serial>[1]:PRLI(A,s:610b13,d:610513,t:0800,dov=0,if
n=1,tfn=1,cdm=0,drm=0)
Sep 1 10:05:19 rs320-6 HW: <serial>[1]:PRLD(A,s:610a13,d:610513)
Sep 1 10:05:19 rs320-6 HW: <serial>[1]:LOGO(A,s:610a13,d:610513)
Sep 1 10:05:19 rs320-6 HW: <serial>[1]:PRLD(A,s:610b13,d:610513)
Sep 1 10:05:19 rs320-6 HW: <serial>[1]:LOGO(A,s:610b13,d:610513)

--- Press Enter to return to menu ---
```

Figure 5-22: Error and System Event Log

The system displays the commands for navigating the system event and error logs at the bottom of the window.

5.3.2 Clearing the System Event Log

Via Web Interface

To clear the system event log via the web interface

- Click the **“Management Control Processor”** graphic
- Click the **“Clear Log”** button.

Via Text Management

To clear the system event log via Text Management Interface:

- From the **Telnet Main Menu**, select **“Log Files”**
- Select **“Clear the System Log”**

5.3.3 Clearing Logged ECC Errors

Via Web Interface

To clear the error log via the web interface

- Click the **“Management Control Processor”** graphic
- Click the **“Clear ECC Log”** button.

Via Text Management

To clear the error log via Text Management Interface:

- From the **Telnet Main Menu**, select **“Health and status”**
- Select **“Clear ECC Errors”**

5.3.4 Configuring Remote Logging

The RamSan is capable of sending log messages to a remote log using standard RFC 3164 BSD Syslog Protocol messages. Your remote log host must be configured correctly to receive and log these system log messages.

Via Web Interface

To enable remote host logging via the web interface:

- Click the "**Management Control Processor**" graphic
- Click the "**Network**" tab
- Enter the remote logging host name in the text box. To disable remote host logging, leave the text box blank.
- Click the "**Save**" button.

Via Text Management

To enable remote host logging via Text Management Interface:

- From the **Telnet Main Menu**, select "**Log files**"
- Select "**Set remote logging host**"
- Enter the remote logging host name in the text box. To disable remote host logging, leave the text box blank.

Chapter 6 – LUN Configuration

The extremely versatile RamSan-325 series supports a variety of configurations and access control methods. LUN configuration is a memory-partitioning tool that allows the administrator to configure system memory into LUNs (Logical Unit Numbers) that may be assigned to specific Fibre Channel ports in the RamSan. In addition, the administrator can assign LUN specific backup modes and assign the LUNs' access lists, which mask the visibility to specific servers.

The factory default configuration assumes no access control and equal shares of system memory for each Fibre Channel port. For example, if you have a 16 Gigabyte system with two Fibre Channel ports, each port has access to only half of the system memory. Host computers attached to the same network as the RamSan see two eight-Gigabyte drives.

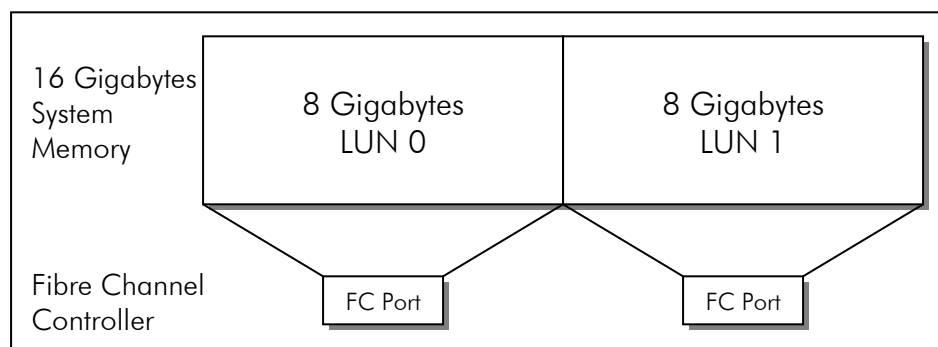


Figure 6-1: RamSan Default LUN Configuration

You can change each Fibre Channel ports allocated space by using a simple configuration utility that TMS provides in the Text Management Interface and Web Interface.

Important:

LUN changes are not effective until the changes are saved.

6.1 A Example LUN Configuration

This section summarizes how to change the system memory configuration from the default factory configuration to a new configuration, which consists of four partitions and has access lists that allow only four host machines to use the RamSan.

This demonstration assumes the four HBAs and the RamSan's Fibre Channel ports are attached to the same fabric. In addition, this system has 16 Gigabytes of memory.

The new configuration consists of four partitions that HBAs access using four Fibre Channel ports in the RamSan. This demonstration assigns each HBA a unique LUN. The example results in the following configuration:

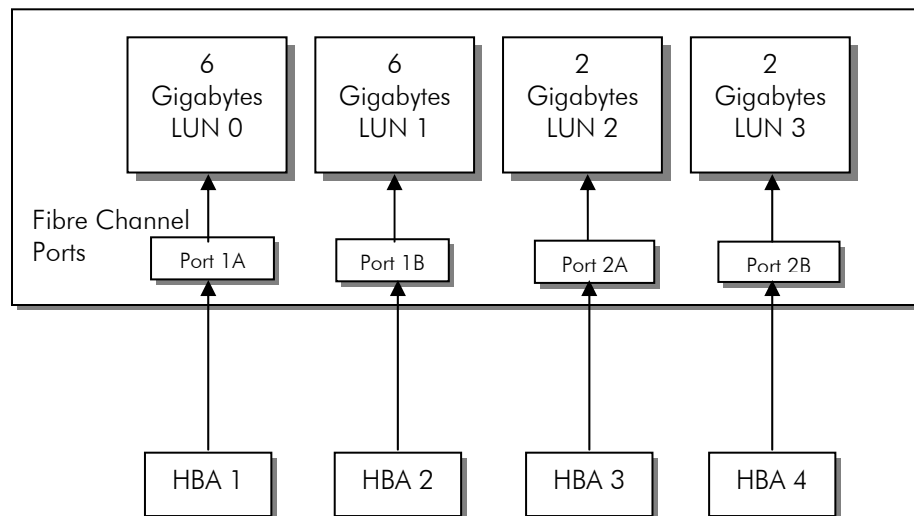


Figure 6-2: Reconfigured LUN Mapping

To change from the default configuration to the one described above, perform the following steps:

- Delete the default LUNs (see *Section 6.8*)
- Add two 6-Gigabyte LUNs (see *Section 6.2*)
- Add two 2-Gigabyte LUNs (see *Section 6.2*)
- Link each LUN to an Fibre Channel port (see *Section 6.4*)
- Add access lists (see *Section 6.7*)
- Set a backup mode for each LUN in a RamSan-325 (see *Section 6.9*)

6.2 Adding LUNs

The RamSan allows the administrator to add LUNs through the Text Management Interface and the web interface.

6.2.1 Via Web Interface

To add LUN(s) via the web interface:

- Click on the “**Management Control Processor**” graphic
- Click on the “**LUN Config**” tab
- Click the “**New LUN**” button
- Select a “**LUN number**” from the drop-down box
- Enter the “**Device ID**”
- Adjust the “**LUN size**” using the scroll bar
- Assign links to FC ports (see *Section 6.4 – Linking LUNs to/from Fibre Channel Controllers*)
- Assign LUN masks (see *Section 6.7 – Managing Access Lists*)
- Set backup mode (see *Section 6.9 – Setting Backup Mode*)
- Click the “**OK**” button
- The system adds the specified LUN.



Figure 6-3: Adding LUNs via the Web Interface

6.2.2 Via Text Management

To add LUN(s) via the Text Management Interface:

- From the **Telnet Main Menu**, select **"LUN Setup"**
- Select **"Add LUN(s)"**

```
*** Add LUN(s) ***
Total storage space:      16384 MB
Unallocated storage space: 16384 MB
Largest possible LUN size: 16384 MB
Number of LUNs to add:    1
Size of LUN(s) to add:    16384 MB
Total space to allocate:  16384 MB
-1: Change number of LUNs to add
 2: Change size of LUNs to add
 3: Add LUNs
 Q: Exit to LUN configuration menu
```

Figure 6-4: Adding LUN(s) Menu

The first three rows at the top of the **"Add LUN(s)"** screen display details regarding the available storage space and LUN size.

The second three rows display information about the LUNs that the administrator is currently adding.

To change the number of LUNs to add:

- Select **"Change number of LUNs to add"**
- Enter the number of LUNs to add and press [ENTER]

To change the size of the added LUNs:

- Select **"Change size of LUNs to add"**
- Enter the size of LUNs to add and press [ENTER]

Once you have verified your selections at the top of the screen and are ready to add the selected LUNs:

- Select **"Add LUNs"**

The system adds the specified number of LUNs. If space was not available, the system displays an error message.

When adding new LUNs, the configuration utility automatically makes the LUNs of equal size.

6.3 Viewing LUN Status / LUN Map

To help you visualize the setup of the system LUNs, TMS provides a LUN map in the Text Management Interface and the Web Interface.

6.3.1 Via the Web Interface

When using the Web Interface, you can view the LUNs for the entire system or for the specific fibre channel controller:

To view the LUNs for the entire system:

- Click on the “**Management Control Processor**” graphic.
- Click on the “**LUN Config**” tab.
- This screen displays the configuration of all LUNs.



Figure 6-5: Viewing System LUNs via Web Interface

To view the LUNs available to a particular Fibre Channel Controller:

- Click on the “**Fibre Channel Controller**” graphic.
- Click on the “**Available LUNs**” tab.
- This screen displays the available LUNs for the selected Fibre Channel Controller.



Figure 6-6: Viewing LUNs Assigned to FC ports via Web Interface

6.3.2 Via Text Management

To view the LUN map via Text Management Interface:

- From the **Telnet Main Menu**, select **"LUN Setup"**
- Select **"Print detailed LUN map"**
- Select **"All LUNs"** or a specific LUN.

```
LUN: 0      Size: 3276 MB
Total LUN masks for this LUN: 0
Total linked ports: 0
Segments:
[0] Start: 0      Cnt: 6709248      End: 6709248

LUN: 1      Size: 4096 MB
Total LUN masks for this LUN: 0
Total linked ports: 0
Segments:
[0] Start: 6709248      Cnt: 6709248      End: 13418496
[1] Start: 26836992      Cnt: 1679360      End: 28516352

LUN: 2      Size: 3276 MB
Total LUN masks for this LUN: 0
Total linked ports: 0
Segments:
[0] Start: 13418496      Cnt: 6709248      End: 20127744

Press any key to continue or Q to quit
```

Figure 6-7: LUN Map Screen

The LUN map, see *Figure 6-7: LUN Map Screen*, shows up to three configurations per page. To scroll through all of the entries, press any key other than 'Q.'

6.4 Linking LUNs to/from Fibre Channel Controllers

To make partitioned LUNs accessible to connected servers, the administrator must link the LUNs to the RamSan's Fibre Channel controllers.

6.4.1 Via Web Interface

To change the links between LUNs and the Fibre Channel controllers via the Web Management Interface:

- Click on the **"Management Control Processor"** graphic.
- Click on the **"LUN Config"** tab.
- Select the LUN to edit by clicking on the LUN graphic.
- Click the **"Modify LUN"** button.
- Select the links for the LUN by clicking the **"Channel links"** checkboxes.
- Click the **"OK"** button.

6.4.2 Via Text Management

Linking Fibre Channel Controllers

- From the **Telnet Main Menu**, select **“LUN Setup”**
- Select **“Link/unlink fibre channel controller(s) to/from LUN(s)”**

```
*** Link/Unlink LUN(s) ***
Current FC controller: 1 - A
# of LUNs currently linked to controller: 1

-1: Select different controller
2: Select different channel on controller
3: Link LUN(s) to selected controller
4: Unlink LUN(s) from selected controller
5: Print detailed link map for selected controller
Q: Exit to LUN Configuration menu
```

Figure 6-8: Link LUNs Screen

The Link LUNs screen displays the currently selected controller and port above the menu. *Figure 6-8: Link LUNs Screen* displays the selected controller as **2-A**, which is Controller 2 Port A.

- To change the selected controller select **“Select different controller”**. This displays a list of controllers. Select one and press [ENTER].
- To change the port, select **“Select different channel on controller”**. This displays a list of channels. Select one and press [ENTER].

In addition, the “Link/Unlink LUN(s)” screen indicates the number of LUNs currently linked to the selected controller.

- To link a LUN to the selected controller, select **“Link LUN(s) to selected controller”**.
- From the sub-menu that lists all LUN numbers not already linked to another FC port, select a LUN number and press [ENTER].

If all LUNs are linked to ports already, then the system displays an error message.

- Select **“Exit to the LUN configuration menu”**
- To save the changes once you have completed all LUN configuration, select **“Save changes and exit”**

To ensure that your changes were successful, see *Section 6.3 - Viewing LUN Status / LUN Map*.

Unlinking Fibre Channel Ports from LUN

To unlink a LUN from an FC controller:

- From the **Telnet Main Menu**, select **"LUN Setup"**
- Select **"Link/unlink fibre channel controller(s) to/from LUN(s)"**
- Select appropriate channel/port (See *Linking Fibre Channel Controllers*, above)
- Select **"Unlink LUN(s) from selected controller"**
- A sub-menu appears, as shown in *Figure 6-9: Unlink LUNs Option*, which provides a list of all LUNs that are linked to this controller.
- To unlink a LUN or all linked LUNs, select the LUN and press [ENTER].
- Select **"Exit to the LUN configuration menu"**
- To save the changes once you have completed all LUN configuration, select **"Save changes and exit"**

```
*** Link/Unlink LUN(s) ***
Current FC controller: 1 - A
# of LUNs currently linked to controller: 1

1: Select different controller
2: Select different channel on controller
3: Link LUN(s) to selected controller
4: Unlink LUN(s) from selected controller
5: Print detailed link map for selected controller
Q: Exit to LUN Configuration menu
```

Figure 6-9: Unlink LUNs Option

6.5 Changing LUN Numbers

The configuration utilities allow you to change the LUN numbers.

6.5.1 Via Web Interface

To change LUN numbers via the Web Management Interface:

- Click on the “**Management Control Processor**” graphic.
- Click on the “**LUN Config**” tab.
- Select the LUN to edit by clicking on the LUN graphic.
- Click the “**Modify LUN**” button.
- Select the LUN number from the “**LUN number**” listbox.
- Click the “**OK**” button.

6.5.2 Via Text Management

- From the **Telnet Main Menu**, select “**LUN Setup**”
- Select “**Modify LUN(s)**”
- Select “**Select LUN**”
- Select the LUN to edit from the sub-menu and press [ENTER]
- Select “**Assign different LUN # to this LUN**”
- A sub-menu displays a list of the available LUN numbers. Select a LUN number and press [ENTER]. For details, see *Figure 6-10: Assigning Different LUN Numbers*.
- Select “**Exit to the LUN configuration menu**”
- To save the changes once you have completed all LUN configuration, select “**Save changes and exit**”

You may number the LUNs between 0 and 63, minus those LUN numbers already assigned to devices.

```
*** Modify LUN ***
Current LUN: 0
LUN size: 16384 MB
SCSI device ID: 0 (0x00)
Number of LUNs masks for this LUN: 0
Backup mode: Active

1: Select LUN
2: Add WWN mask to LUN
3: Delete WWN mask from LUN
4: Print detailed WWN mask
5: Set SCSI device identifi
6: Resize LUN
7: Assign different LUN # t
8: Set backup mode for this LUN
9: Initialize LUN
Q: Exit to the LUN configuration menu
```

2	:	LUN	2	-
3	:	LUN	3	
4	:	LUN	4	
5	:	LUN	5	
6	:	LUN	6	v

Figure 6-10: Assigning Different LUN Numbers

6.6 Resizing LUNs

The Text Management Interface makes it possible to change the LUN sizes. The configuration utilities allow you to both increase and decrease the size of the currently configured LUNs, to make room for more LUNs, or to ensure that the system is using all available space.

6.6.1 Via Web Interface

To resize the LUNs via the Web Management Interface:

- Click on the **“Management Control Processor”** graphic.
- Click on the **“LUN Config”** tab.
- Select the LUN to edit by clicking on the LUN graphic.
- Click the **“Modify LUN”** button.
- Select the size from the **“LUN Size”** scroll bar.
- Click the **“OK”** button.

6.6.2 Via Text Management

- From the **Telnet Main Menu**, select **“LUN Setup”**
- Select **“Modify LUN(s)”**
- Select LUN (See instructions in *Section 6.5*)
- Select **“Resize LUN”**
- Enter the new LUN size in MB and press [ENTER].
- Select **“Exit to the LUN configuration menu”**
- To save the changes once you have completed all LUN configuration, select **“Save changes and exit”**

The system does not allow entering a LUN size greater than the remaining available space. If you attempt this, the system displays an error message and does not save your changes.

6.7 Managing Access Lists

The Text Management Interface provides the ability to create access lists for individual Fibre Channel ports. This allows the administrator to specify which worldwide port names (HBAs) are allowed to communicate with each partition.

6.7.1 Via Web Interface

To manage access lists via the Web Management Interface:

- Click on the “**Management Control Processor**” graphic.
- Click on the “**LUN Config**” tab.
- Select the LUN to edit by clicking on the LUN graphic.
- Click the “**Modify LUN**” button.
- To add a mask, enter the “**New Mask**” textbox and click the “**Add Mask**” button.
- To delete a mask, select the mask from the “**Masks**” listbox and click the “**Delete Mask**” button.
- Click the “**OK**” button.

6.7.2 Via Text Management

Viewing Current Access Lists

To get a list of the World Wide Name masks for the selected LUN as shown in *Figure 6-11: Current Access Lists*, follow these steps:

- From the **Telnet Main Menu**, select “**LUN Setup**”
- Select “**Modify LUN(s)**”
- Select LUN (See instructions in *Section 6.5*)
- Select “**Print detailed WWN mask list for LUN**”
- The system displays the WWN mask list.
- Press any key to return to the **Modify LUN(s)** menu.

```
Mask 00: bf:47:36:52:65:f8:69:76
Mask 01: 98:69:65:56:34:fd:fb:ae
Mask 02: 67:58:79:6f:d5:74:34:d6
Press any key to continue█
```

Figure 6-11: Current Access Lists

Adding Access Lists

To add a worldwide port name to a LUN access list:

- Select LUN (See instructions in *Section 6.5*)
- From the **Telnet Main Menu**, select **"LUN Setup"**
- Select **"Modify LUN(s)"**
- Select **"Add WWN mask to LUN"**
- Type in the mask that you wish to add. The system automatically inserts the colons between the numbers as you type. Press [ENTER].
- Select **"Exit to the LUN configuration menu"**
- To save the changes once you have completed all LUN configuration, select **"Save changes and exit"**

The system only allows you to enter in hexadecimal numbers 0-F; the system ignores any other keyboard input.

Deleting Access Lists

To delete a worldwide port name from a LUN access list:

- From the **Telnet Main Menu**, select **"LUN Setup"**
- Select **"Modify LUN(s)"**
- Select LUN (See instructions in *Section 6.5*)
- Select **"Delete WWN mask from LUN"**
- A submenu displays all masks listed. Select the mask to be deleted and press the [ENTER] button. The option "Delete All Masks" removes all masks.
- Select **"Exit to the LUN configuration menu"**
- To save the changes once you have completed all LUN configuration, select **"Save changes and exit"**

```
*** Modify LUN ***
Current LUN: 0
LUN size: 16384 MB
SCSI device ID: 0 (0x00)
Number of LUNs masks for this LUN: 2
Backup mode: Active

1: Select LUN
2: Add WWN mask to LUN
3: Delete WWN mask from LUN
4: Print detailed WWN mask
5: Set SCSI device identifi
6: Resize LUN
7: Assign different LUN # to this LUN
8: Set backup mode for this LUN
9: Initialize LUN
Q: Exit to the LUN configuration menu
```

-D: Delete All Masks
1: 12:4d:df:56:65:dc:d5:45
2: 87:78:bc:f3:34:46:35:66
C: Cancel

Figure 6-12 Deleting Access Lists

Setting SCSI device identifiers

This allows a user to set an SCSI device identifier between 1 and 255.

- From the **Telnet Main Menu**, select **"LUN Setup"**
- Select **"Modify LUN(s)"**
- Select LUN (See instructions in *Section 6.5*)
- Select **"Set SCSI device identifier"**
- Enter a unique device identifier from 1 to 255 and press [ENTER].
- Select **"Exit to the LUN configuration menu"**
- To save the changes once you have completed all LUN configuration, select **"Save changes and exit"**

```
*** Modify LUN ***
Current LUN: 0
LUN size: 16384 MB
SCSI device ID: 0
Number of LUNs mas
Backup mode: Activ
Enter a unique device identifier from 1 to 255.
Note: This value is usually only used in OpenVMS

1: Select LUN
2: Add WWN mask t
3: Delete WWN mask from LUN
4: Print detailed WWN mask list for LUN
5: Set SCSI device identifier
6: Resize LUN
7: Assign different LUN # to this LUN
8: Set backup mode for this LUN
9: Initialize LUN
Q: Exit to the LUN configuration menu
```

Figure 6-13: Setting SCSI Device Identifier

6.8 Deleting LUNs

The Text Management Interface and web interface allow the administrator to delete LUNs.

6.8.1 Via Web Interface

To delete LUNs via the web interface:

- Click on the “**Management Control Processor**” graphic.
- Click on the “**LUN Config**” tab.
- Select to LUN to delete by clicking on the LUN graphic.
- Click the “**Delete LUN**” button.



Figure 6-14: Deleting LUNs via Web Interface

6.8.2 Via Text Management

To delete LUNs via the Text Management Interface:

- From the **Telnet Main Menu**, select **"LUN Setup"**
- Select **"Delete LUN(s)"**
- Select a LUN or LUNs and press **Enter**.
- Confirm LUN deletion by pressing **"Y"** or cancel by pressing **"N"**
– see *Figure 6-15: Deleting LUNs*
- Select **"Exit to the LUN configuration menu"**

```
*** LUN Configuration ***
1 currently configured LUN
Total storage space in use:      16384 MB (100.0%)
Total storage space unallocated:  0 MB ( 0.0%)
Total storage spac

? | LUN deletion requested
Are you sure you want to delete the
selected LUN(s)?
(Y)es          (N)o

1: Add LUN(s)
2: Modify LUN(s)
-3: Delete LUN(s)
3: Link/Unlink fibre channe
4: Print detailed LUN map
S: Save changes and exit
Q: Discard changes and exit

-0: LUN 0
C: Cancel
to/from LUN(s)
```

Figure 6-15: Deleting LUNs

To verify the deletion of the LUN, view the LUN Configuration menu for a total number of LUNs.

- To save the changes once you have completed all LUN configuration, select **"Save changes and exit"**

6.9 Setting Backup Mode

The RamSan-325 allows the administrator to set backup modes for each LUN individually.

Warning:

TMS does not recommend changing backup modes while the system is actively transferring data.

6.9.1 Via Web Interface

To set the LUN's backup mode via the Web Management Interface:

- Click on the "**Management Control Processor**" graphic.
- Click on the "**LUN Config**" tab.
- Select the LUN to edit by clicking on the LUN graphic.
- Click the "**Modify LUN**" button.
- Select the backup mode from the "**Backup Mode**" listbox.
- Click the "**OK**" button.

6.9.2 Via Text Management

To set a LUN's backup mode via the Text Management Interface:

- From the **Telnet Main Menu**, select "**LUN Setup**"
- Select "**Modify LUN(s)**"
- Select LUN (See instructions in *Section 6.5*)
- Select "**Set backup mode for this LUN**"
- Choose the backup mode from the sub-menu and press [ENTER]
- Select "**Exit to the LUN configuration menu**"
- To save the changes once you have completed all LUN configuration, select "**Save changes and exit**"

Active Backup™ mode (optional)

This ideal mode for most users is only available from Texas Memory Systems. In Active Backup mode, the RamSan uses available internal bandwidth (i.e. performance not utilized by the applications) to constantly backup memory to the disks. The system automatically optimizes this operation to backup the maximum amount of data at any given time without impacting performance. This means that at any one time, most of the data already resides on disk. Upon emergency or shutdown, the unit need only finish the backup that is already nearly completed. Active Backup is an optional feature on the RamSan-325; therefore, some systems may not display this option.

Datasync mode

In DataSync mode, reads and writes are done only to memory. The disks remain offline during normal operation. If power loss occurs and the shutdown timer reaches zero, or the user requests a shutdown, the system takes the Fibre Channel interfaces offline and synchronizes all data to the internal hard drives.

Volatile mode (optional)

This operational mode disables the backup functionality for the LUN making it completely volatile. In the case of system shutdown or failure, all data stored in the selected LUN will be lost intentionally.

6.10 Initializing LUNs

The RamSan-325 allows the administrator to initialize each LUN. The initialization process erases the first few blocks of the selected LUN to remove any stale file system information.

6.10.1 Via Web Interface

To initialize a LUN via the Web Management Interface:

- Click on the “**Management Control Processor**” graphic.
- Click on the “**LUN Config**” tab.
- Select the LUN to edit by clicking on the LUN graphic.
- Click the “**Modify LUN**” button.
- Click the “**Initialize**” button.

6.10.2 Via Text Management

To initialize a LUN via the Text Management Interface:

- From the **Telnet Main Menu**, select “**LUN Setup**”
- Select “**Modify LUN(s)**”
- Select LUN (See instructions in *Section 6.5*)
- Select “**Initialize LUN**”
- Select “**Exit to the LUN configuration menu**”

To save the changes once you have completed all LUN configuration, select “**Save changes and exit**”

Chapter 7 – Fibre Channel Controller Configuration

The RamSan allows the user to select the topology, link speed, and failover options for the Fibre Channel Controllers. RamSan supports Point-to-Point and Arbitrated loop topologies and can auto-detect the topology. It supports 1- and 2-Gbit link speeds and can auto-detect the speed. When more than one Fibre Channel Controller is installed, the controllers can be set to back each other up. The following two sections provide additional details.

7.1 Changing Fibre Channel Topology and Link Speed

Via Web Interface

To change the Fibre Channel topology and link speed via the web interface:

- Click on the “**Fibre Channel Controller**” graphic.
- Click on the “**Controller Setup**” tab.
- Select from the “**Topology**” and “**Link Speed**” settings.
- Click the “**Save**” button.



Figure 7-1: Controller Setup via Web Interface

Via Text Management

- From the Telnet Main Menu, select “**Controller setup**”
- Select “**Select controller**”
- Choose a controller from the sub-menu and press [ENTER]

```
*** Controller Setup ***
Controller 1 -- Primary (Active), Version: 1.10
                Channel A                Channel B
WWN:           10:01:00:20:c2:03:25:96    11:01:00:20:c2:03:25:96
Node name:     20:01:00:20:c2:03:25:96    21:01:00:20:c2:03:25:96
Topology:      P-P ( P-P)                P-P ( P-P)
Link speed:    2 GB ( 2 GB)                2 GB ( 2 GB)
Loop ID:       N/A                        N/A

-1: Select controller
 2: Change topology
 3: Change link speed
 4: Change ALPA assignment
 5: Configure failover
 6: Reset Controller
 7: Clear Statistics
 S: Save changes and exit
 Q: Discard changes and exit
```

Figure 7-2: Controller Setup via Text Management Interface

The top of this menu indicates the controller’s current settings.

To change the topology:

- Select “**Change topology**”
- Choose the controller’s topology from the sub-menu and press [ENTER]

To change the link speed:

- Select “**Change link speed**”
- Choose the controller’s link speed from the sub-menu and press [ENTER]

All modifications are visible at the top of the menu.

To save any changes:

- Select “**Save changes and exit**”

Generally, selecting auto-detect for topology and link speed provides you with the proper settings for your system. If the **Controller Setup** screen displays these settings as “**Unkn**” (See *Figure 7-3: Auto-Detect Error*) once you have saved the changes, you must configure the link speed and topology manually.


```
*** Controller Setup ***
Controller 2 -- Primary (Active)
      Channel A                      Channel B
WWN:   10:02:00:20:c2:02:21:41      11:02:00:20:c2:02:21:41
Node name: 20:02:00:20:c2:02:21:41  21:02:00:20:c2:02:21:41
Topology:  (Auto) Unkn              (Auto) Unkn
Link speed: (Auto) Unkn              (Auto) Unkn

1: Select controller
2: Change topology
3: Change link speed
4: Configure failover
5: Reset Controller
S: Save changes and exit
Q: Discard changes and exit
```

Figure 7-3: Auto-Detect Error

For more information regarding the settings appropriate for your application, please consult your fibre channel administrator.

Important:

Saving changes made from this menu causes the system to reset the Fibre Channel Controller, which may result in data corruption. TMS does not recommend changing the controller settings while the controller is actually transferring data.

Note:

Some HBAs do not support direct attach point-to-point operation. If you are having trouble with a direct attach connection in point-to-point mode, try changing the controller to arbitrated loop mode. This topology should not affect performance noticeably, and some HBAs may only support this mode.

7.2 Configuring High Availability

The administrator can configure the RamSan's Fibre Channel (FC) controllers to back each other up in case of a failure. There are five basic FC controller states. The following list details what these states mean, how a controller can end up in each state, and what a controller's options are from the states:

Primary (Active)

This default state is the most basic state. In this state, the controller is not associated with any of the other FC controllers. The administrator can modify any controller setting from this state, and the effect will be local to this controller. This controller's links are enabled and can be used to transmit and receive data.

Primary (Active, Secondary is X)

This state is identical to “Primary (Active)” state with one important difference: the administrator has selected a secondary controller, Controller X, to backup this primary controller. If this primary controller loses its link for an extended period or cannot transmit data for any reason, the secondary controller mimics the failed controller, preventing performance loss.

To get a controller into this state: First, configure the primary controller as “Primary (Active).” Then, from the secondary controller’s setup menu, set the secondary controller’s high availability to “Secondary (Passive, Primary is X)” state and choose the primary controller as the primary.

Note: Once the administrator sets a controller as a primary controller with a backup, it must remain primary until the administrator changes the secondary controller’s configuration from secondary to primary.

Secondary (Passive, Primary is X)

The “Secondary (Passive, Primary is X)” state sets the controller as secondary to a primary controller, as mentioned in the section above. To set a controller in this state, first configure its high availability to “Secondary (Passive, Primary is X)” state from the “Primary (Active)” state. The controller remains in this state until the administrator configures it back to “Primary (Active)” state or until a failover occurs. If a failover occurs, the system copies all of the attributes of the primary controller to the secondary controller and activates its links. From this state, all of the secondary controller’s attributes are meaningless and are not updateable until the administrator sets the controller back to “Primary (Active)” state.

Primary (Passive, Secondary is X)

The “Primary (Passive, Secondary is X)” state indicates that the primary controller has experienced a failure; however, often these failures are not fatal and are recoverable. For example, if a cable is pulled for an extended period, the link “fails,” but once the controller is plugged back in, the link becomes usable again. Since the system copies all attributes of a failed primary controller to the secondary, the system cannot allow the failed primary controller to come back online. Instead, the system disables the links, and the original primary controller becomes a backup for the active secondary controller. The administrator cannot set this controller back to an active state directly. To re-activate this controller, either the secondary controller must fail, or the administrator must re-configure the secondary controller to “Primary (Active)” state.

Secondary (Active, Primary is X)

The “Secondary (Active, Primary is X)” state identifies a secondary controller that has taken over for a failed primary controller. The administrator originally configured this controller to backup the primary controller; however, when the primary controller failed, this controller became an active copy of the primary. In this state, the primary controller backs up this secondary controller. Changing this secondary controller to “Primary (Active)” state resets this controller and the primary controller.

In addition, resetting the controller causes the system to lose the link temporarily. Reads and writes occurring when the administrator resets this controller back to “Primary (Active)” state result in errors because the drives appear to have been removed. TMS does not recommend configuring an active secondary controller as primary unless no transmissions are taking place.

Via Web Interface

To change the failover state via the web interface:

- Click on the “**Fibre Channel Controller**” graphic.
- Click on the “**Controller Setup**” tab.
- Select from the “**Select failover mode**” settings.
- Click the “**Save**” button.



Figure 7-4: Failover Setup via Web Interface

Via Text Management

To view or change the state via the Text Management Interface:

- From the Telnet Main Menu, select “**Controller setup**”

```
*** Controller Setup ***
Controller 1 -- Primary (Active), Version: 1.10
                Channel A                Channel B
WWN:           10:01:00:20:c2:03:25:96    11:01:00:20:c2:03:25:96
Node name:     20:01:00:20:c2:03:25:96    21:01:00:20:c2:03:25:96
Topology:      P-P ( P-P)                P-P ( P-P)
Link speed:    2 GB ( 2 GB)              2 GB ( 2 GB)
Loop ID:       N/A                       N/A

1: Select controller
2: Change topology
3: Change link speed
4: Change ALPA assignment
-5: Configure failover
6: Reset Controller
7: Clear Statistics
S: Save changes and exit
Q: Discard changes and exit
```

Figure 7-5: Controller Setup Menu

The **Controller Setup** screen, see *Figure 7-5*, displays the selected controller at the top of the screen. Next to the controller number, the display indicates the controller’s states. In *Figure 7-5*, the selected controller is “**2**” and the display indicates that the controller’s state is “**Primary (Active, Secondary is 3)**.”

7.3 Resetting a Fibre Channel Controller

The system allows you to reset a fibre channel controller in the unlikely situation that a fibre channel controller becomes unresponsive.

Via Web Interface

To change reset a fibre channel controller via the Web Interface:

- Click on the “**Fibre Channel Controller**” graphic.
- Click on the “**Controller Setup**” tab.
- Click the “**Hard Reset**” button.



Figure 7-6: FC hard reset via Web Interface

7.4 Clearing Fibre Channel Controller Statistics

The system allows you to clear fibre channel controller statistics in order to resolve system warnings. This feature clears the link down count, CRC error count, receive error count, and any associated system warnings.

Via Web Interface

To change clear the fibre channel controller statistics via the Web Interface:

- Click on the “**Fibre Channel Controller**” graphic.
- Click on the “**Controller Setup**” tab.
- Click the “**Clear Stats**” button.



Figure 7-7: Clearing FC statistics via Web Interface

7.5 Advanced Fibre Channel Controller Options

The RamSan Text Management Interface contains several advanced options that help to diagnose potential issues and configure the fibre channel controllers for non-standard environments. These features are typically used in coordination with a Texas Memory Systems technical support contact.

7.5.1 View Fibre Channel Console

The fibre channel console provides detailed logging for the fibre channel controllers. This feature allows Texas Memory Systems technical support personnel to view and diagnose potential issues.

To view the fibre channel console through the Text Management Interface:

- From the Telnet Main Menu, select **“Health and status”**
- Select **“Advanced FC options”**
- Select **“View fibre channel console”**
- Select a fibre channel controller from the sub-menu
- To return to the Advanced FC Options Menu, press **“Q”**

7.5.2 Disable/Enable Fibre Channel Login Reset

Certain operating systems, including HPUNIX and AIX, establish fibre channel links more intermittently than standard operating systems. In such cases, you may need to disable automatic fibre channel login resets. This feature allows you to disable the automatic login resets.

To disable the automatic fibre channel login resets through the Text Management Interface:

- From the Telnet Main Menu, select **“Health and status”**
- Select **“Advanced FC options”**
- Select **“Disable FC login reset”**

7.5.3 Disable/Enable Extra Fibre Channel Logging

Certain operating systems, including HPUNIX and AIX, frequent fibre channel link up and link down instances can quickly fill up the RamSan’s system log. In such cases, you may need to disable extra, or detailed, fibre channel logging.

To disable the extra fibre channel logging through the Text Management Interface:

- From the Telnet Main Menu, select **“Health and status”**
- Select **“Advanced FC options”**
- Select **“Disable extra FC logging”**

Chapter 8 – SNMP Configuration

8.1 Enabling SNMP settings

RamSans support the Simple Network Management Protocol (SNMP), which is the dominant network management protocol. The industry has accepted this protocol due to its relative simplicity. The SNMP standards provide a framework for the definition of management information along with a protocol for the exchange of that information. The RamSan-325 Series is compatible with SNMP V2c.

The SNMP protocol requires a “manager,” which is network management software that you supply, and an “agent,” which is the RamSan or other SNMP compatible network device. Both the manager (via polling) and the agent (via a trap) can initiate management information exchanges.

The RamSan allows the administrator to enable or disable the SNMP functionality. For more information regarding these settings, see *Section 4.1.5 - Enable/disable SNMP*.

8.1.1 Setting SNMP community strings

The SNMP community string is like a user id or password that allows access to the RamSan’s statistics. The RamSan sends the community string along with all SNMP requests. If the community string is correct, the device responds with the requested information. If the community string is incorrect, the device simply discards the request and does not respond.

There are two community strings for the RamSan:

- The SNMP Read-only community string enables a remote device to retrieve "read-only" information from a device.
- The SNMP Read-Write community string allows a remote device to read information from a device and to modify settings on that device. RamSan does not use the read-write community string, since it never attempts to modify any settings on its devices.

The RamSan ships from the factory with a read-only community string of "read." It is standard practice for network managers to change all the community strings so that outsiders cannot see information about the internal network.

Table 1 describes the SNMP default configuration:

Feature:	Default Setting:
SNMP Community Strings:	Read: Read Read/Write: ReadWrite System Location: Nothing System Contact: Nothing
SNMP Trap IPs:	None configured
SNMP Traps:	None enabled

Table 1: SNMP Default Configuration

In addition, the SNMP standards allow you to enter the location of the system (i.e. "Row 11, Rack C") and specify an administrative contact for the system (i.e. "Pat Smith, (713) 555-1212").

The following sections demonstrate how to change the default SNMP strings. Changing these values causes the RamSan to use the new string when sending SNMP messages.

Via Text Management

- From the Telnet Main Menu, select "**Management setup**"
- Select "**Configure SNMP**"

```
*** SNMP Configuration ***  
  
Read community : Read  
Read/Write community : ReadWrite  
Total IPs to receive traps : 0  
System location :  
System contact :  
  
1: Change read community name  
2: Change read/write community name  
3: Add IP address to the trap list  
4: Remove IP address from the trap list  
5: Print the current trap IP list  
6: Change the system location  
7: Change the system contact  
S: Save changes and exit  
Q: Discard changes and exit
```

Figure 8-1: SNMP Configuration via Text Management Interface

The top of this menu displays the current SNMP settings.

To change the read community name:

- Select "**Change read community name**"
- Enter the read community name and press [ENTER]

To change the read/write community name:

- Select "**Change read/write community name**"
- Enter the read/write community name and press [ENTER]

To change the system location:

- Select **“Change the system location”**
- Enter the system location and press [ENTER]

To change the system contact name:

- Select **“Change the system contact”**
- Enter the system contact and press [ENTER]

All modifications are visible at the top of the menu.

To save any changes:

- Select **“Save changes and exit”**

Via Web Management

To update community information via the Web Management Interface:

- Click on the **“Management Control Processor”** graphic.
- Click on the **“SNMP”** tab.
- Enter the appropriate community values.
- Click the **“Save”** button.

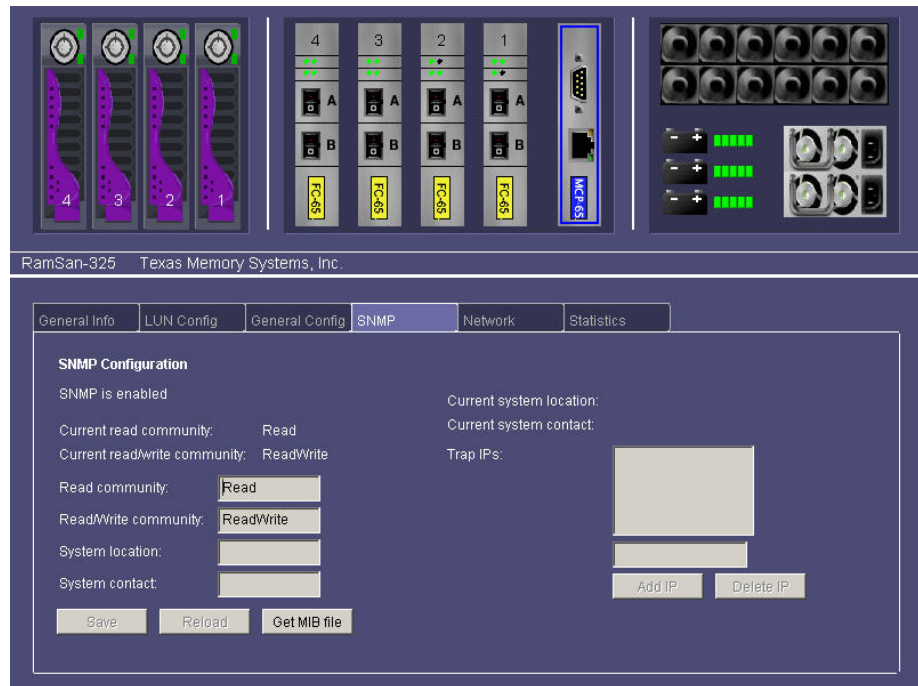


Figure 8-2: SNMP configuration screen

8.1.2 SNMP Trap configuration

The RamSan has the ability to send unsolicited messages to managers when it detects a significant event. The SNMP standard refers to this type of message as a "trap."

The RamSan supports the following traps:

- Power on notification – indicates that the system has turned on
- Power off notification – indicates that a shutdown sequence has been initiated
- Power state notification – indicates that the power state has changed
- Memory state notification – indicates that the memory state has changed
- Battery state notification – indicates that the battery state has changed
- Fan state notification – indicates that a fan state has changed
- Disk state notification – indicates that the disk state has changed
- Disk array notification – indicates that the disk array state has changed
- Fibre Channel state notification – indicates that a fibre channel controller state has changed
- LUN change notification – indicates that the LUN table has been changed
- Fibre Channel configuration change notification – indicates that the configuration of a fibre channel controller has changed
- System message – contains additional system details

All traps are enabled by default. For more details regarding the RamSan's traps, see *Appendix E – SNMP Trap Definitions*.

You can specify a trap receiver to ensure that all SNMP traps sent by the RamSan go the same SNMP trap receiver or set of receivers, typically one or more host devices on the network. The RamSan sends all the SNMP traps to the specified host(s) and includes the specified community strings.

To specify the host to which the RamSan sends all SNMP traps, use one of the following methods:

Via Text Management

- From the Telnet Main Menu, select "**Management setup**"
- Select "**Configure SNMP**"

The top of this menu displays the current SNMP settings.

To add a trap receiver to the list of Trap IPs:

- Select "**Add IP address to the trap list**"
- Enter the IP address of the trap receiver and press [ENTER]

To remove a trap receiver from the list of Trap IPs:

- Select "**Remove IP address from the trap list**"
- Select the IP to be removed and press [ENTER]

To view a list of trap receivers by IP address:

- Select "**Print the current trap IP list**"
- The interface will display the list of trap receivers. Press [ENTER] to return to the menu.

To save any changes:

- Select "**Save changes and exit**"

Via Web Management

To add a trap receiver's IP address via the Web Management Interface:

- Click on the "**Management Control Processor**" graphic.
- Click on the "**SNMP**" tab.
- Enter the IP address of the trap receiver.
- Click the "**Add IP**" button.

To remove a trap receiver's IP address via the Web Management Interface:

- Click on the "**Management Control Processor**" graphic.
- Click on the "**SNMP**" tab.
- Select the IP address of the trap receiver from the Trap IP list.
- Click the "**Delete**" button.

8.1.3 Downloading the MIB file

The network manager makes virtual connections to the RamSan, which returns information to the manager regarding the device's status. The agent contains a database, known as the SNMP Management Information Base (MIB), describing these application parameters. The manager uses this database to make requests to the agent and interpret the signals received. The MIB describes a set of statistical and control values defined for hardware nodes on the RamSan.

Via Web Management

To download the RamSan's MIB file via the Web Management Interface:

- Click on the "**Management Control Processor**" graphic.
- Click on the "**SNMP**" tab.
- Click the "**Get MIB file**" button.

Chapter 9 – System Maintenance

Texas Memory Systems designed the RamSan to be easily maintainable. You can update firmware from the web interface and easily maintain the system components. One of the main features of the RamSan is the ability to hot swap many of the system components. You can hot swap the power supplies and disk drives, meaning that you can remove and replace these components while the system is running.

9.1 Updating System Firmware

Occasionally, Texas Memory Systems releases new versions of firmware for the RamSan. For customers with multiple RamSans, the *TeraWatch User's Guide* demonstrates how to update the firmware of all systems simultaneously.

Important:

Before patching your RamSan, please review the README file associated with the patch. It contains detailed information about the functionality updated, system downtime required for patching and recommended backup procedures.

Via Web Interface

To change update Firmware via the Web Interface:

- Click on the “**Management Control Processor**” graphic.
- Click on the “**General Config**” tab.
- Click the “**Update Firmware**” button.

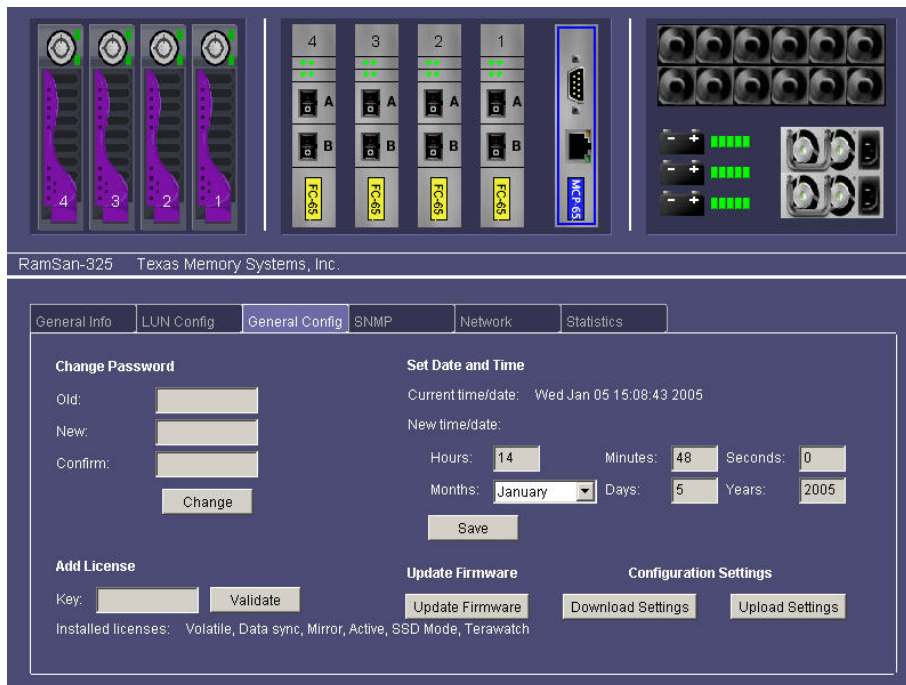
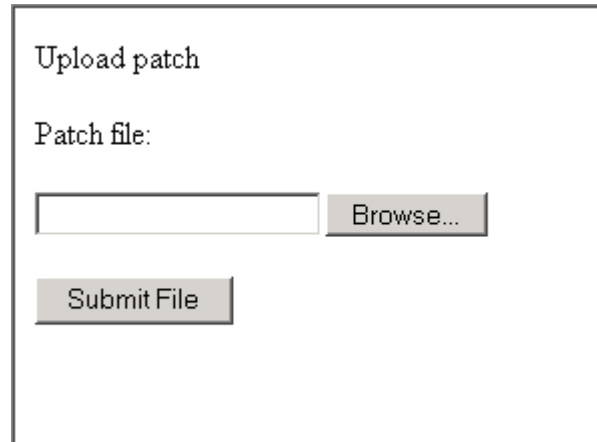


Figure 9-1: Updating firmware via Web Interface

A new window will appear ...

- Click the "**Browse**" button to select the patch file.
- Click the "**Submit File**" button.



The screenshot shows a web interface titled "Upload patch". Below the title is the label "Patch file:". There is a text input field followed by a "Browse..." button. Below these elements is a "Submit File" button.

Figure 9-2: Uploading Patch File via Web Interface

The system will ask you to confirm your password:

- Enter the system password into the text field
- Click the "**Patch**" button.



The screenshot shows a web interface titled "Patching Interface". Below the title is the text "Please enter your password:". There is a text input field followed by a "Patch" button.

Figure 9-3: Confirming Password for Updating Firmware

The system will begin to update the firmware and provide progress in the patching process:

Important:

Do not close this window while the system is being patched.

- Once the update is complete, power off and then power on the RamSan (The front panel will provide a reminder).
- The firmware update is complete.

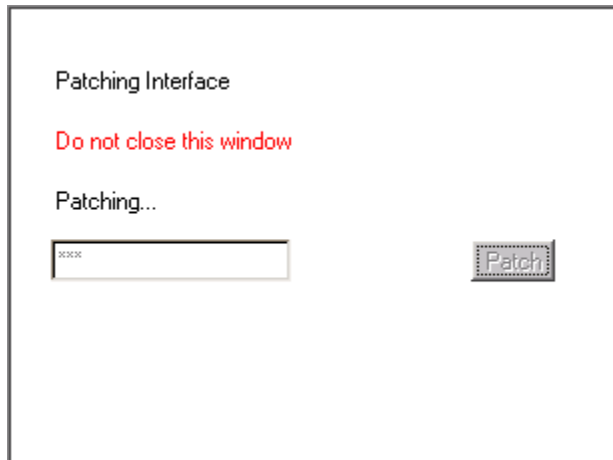


Figure 9-4: Firmware Update Progress Window

9.2 Hot Swapping Power Supplies

The RamSan-325 series includes two power supplies. The system only requires one functioning power supply to run. Texas Memory Systems has taken special care to enclose the RamSan power supplies in a protective case to minimize the electrical risks for users; however, it is critical for users to follow the following steps when removing and replacing the power supplies:

- Disconnect the power cord from the power supply.
- Wait 15 seconds.
- Remove the power supply that needs to be replaced from the RamSan chassis by pressing the release switch and pulling squarely on the power supply handle. **DO NOT REACH INSIDE THE PROTECTIVE ENCLOSURE AFTER REMOVING THE POWER SUPPLY.**
- Insert the replacement power supply in the RamSan chassis. Make sure to insert the power supply squarely and press firmly until the power supply is fully inserted into the system.
- Reconnect power to the new power supply.
- The new power supply begins to operate immediately.

Important:

Replace failed power supplies as soon as possible.

9.3 Hot Swapping Disk Drives

The RamSan-325 includes four internal hard disk drives in a RAID configuration.

The RamSan's internal disk drives are equipped with industry standard Self-Monitoring, Analysis and Reporting Technology (SMART). The RamSan uses SMART to track vital hard drive performance statistics, which helps it to diagnose imminent disk failures. The RamSan system monitoring software queries the disks periodically about their SMART status. If SMART indicates an imminent disk failure, the system monitoring software will display a warning message in the system log.

If a single hard disk drive fails, the system continues to write to the available hard disk drives. When this occurs, replace the malfunctioning disk with a new hard disk drive. Once inserted, the system synchronizes the new disk. While the restore degrades overall system write performance if using Active Backup™, read operations continue uninterrupted.

Important:

Do not remove disk drives during synchronization. Removing disk drives may destroy data on all disks, which requires removing and replacing all drives for a complete synchronization with memory.

If all hard disks fail, the system automatically detects this and stays operational; however, the system remains volatile until all hard drives are functioning properly. When the new drives are replaced, the system rebuilds the drives from the system memory image.

Use the following steps to replace bad disk drives:

1. Verify that disk synchronization is not in progress. If one is in progress, then wait for the synchronization to complete before continuing.
2. Slide the hard disk eject latch to the right.
3. Remove the hard disk by pulling squarely on the handle.
4. Insert new hard disk squarely into the available slot. Ensure the disk drive is completely inserted into the system and flush with the chassis.

Warning:

The system erases any pre-existing data on hard disk drives inserted into the RamSan-325 while the system is running.

Important:

TMS does not advise removing functional hard disks. While the action should be perfectly safe, it may affect system performance or downtime, depending on the system mode, as the system synchronizes the new disk drive.

9.4 Batteries

The RamSan-325 is equipped with three redundant 30-minute sealed lead acid batteries. The batteries are designed to protect the data in DDR RAM memory. If the RamSan-325 loses external power, the system continues to function by running on the internal batteries. Even if both power supplies are removed or fail, the batteries will continue to operate.

After power fails, the system remains in an active state for up to five minutes. If power is restored within this time, the system will remain online.

If the batteries are not fully charged, the system may initiate a shutdown before the five-minute window has elapsed. This procedure protects the data in memory by storing it to disk. If running in DataSync mode, the shutdown operation takes approximately 12 minutes for a fully loaded system as the system synchronizes data on the disks.

Later models of the RamSan-325 perform a periodic battery test to ensure the internal batteries are healthy. Twelve hours after powering the system on, it runs a test that exercises the batteries to ensure they are present and able to hold charge. There is no risk for data loss during this test because the power supplies back up the batteries. The system repeats the test every 30 days after the first test. If the system powers off, the test cycle starts over. The RamSan reports periodic battery test failures in the System Event Log and in all of the management utilities, including the front panel display. If a failure occurs, contact Texas Memory Systems for a replacement battery immediately.

Important:

The periodic battery test does not guarantee that your batteries will have enough capacity to back up in all cases. Texas Memory Systems recommends replacing your batteries every **two years**, even if they continue to pass the periodic battery test.

9.5 Fans

The system has one block of 12 fans. The fan block is accessed from the top of the chassis. Each airflow channel has redundant fans so that cooling is sufficient as long as one of the two fans is running. If one fan fails, the system will issue a warning. If both fans in a single channel fail, the system will issue an error.

Chapter 10 – Troubleshooting

The RamSan is a complex system with many redundant features to safeguard your data; however, components can fail. The RamSan has many ways to inform the user about what is happening inside the system. Rather than try to list all the different possible failures, this section explains how to identify and solve problems.

10.1 System Event Log

In the case of a system failure, review the system event log to determine what failed and when it failed. This information is invaluable in determining why a component failed and provides a timeline for the system administrator to follow. Before contacting Texas Memory Systems, please have a copy of this log available.

10.2 Support Log

The support log provides a snapshot of all current configuration settings. Before contacting Texas Memory Systems, please have a copy of this log available.

10.3 System Diagnostics

The Text Management Interface includes a set of menus with system diagnostics. These diagnostic tools are used in coordination with Texas Memory Systems technical support to diagnose issues.

Warning:

System diagnostics may corrupt data and should not be used in a production environment.

10.4 Still Having Problems...

If the above steps do not clarify the problem or if a system component has failed, contact Texas Memory Systems for additional support.

Contact Information:

Texas Memory Systems, Inc.
10777 Westheimer, Suite 600
Houston, TX 77042

Phone: (713) 266-3200
Fax: (713) 266-0332
Email: support@texmemsys.com

Chapter 11 – Specifications

11.1 Physical Characteristics

Rack Mount Size:	3U (5.25") x 26" deep
Weight:	up to 90 lbs.
Voltage:	90 ~ 264 VAC
Ventilation:	Front to back airflow

11.2 Operating Environment

Temperature:	32-85 °F (0-30 °C)
Max relative humidity: (non-condensing)	80%
Power consumption:	350 W

11.3 Non-operating Environment

Temperature:	32-150 °F (0-65 °C)
Relative Humidity: (non-condensing)	10-90%

Appendix A – RamSan-325 Series Replacement Parts

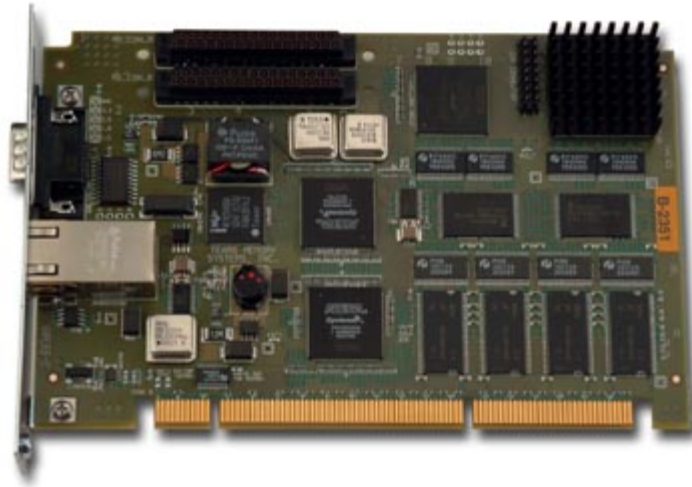


Figure A-1 MCP-65 Management Control Processor



Figure B-2 FC-65 Dual Channel 2-Gigabit Fibre Channel Controller



Figure B-3 Power Supply Module



Figure A-5 Memory Blade



Figure A-6 120 Gigabyte Replacement Hard Drive

Appendix B – FCC/Safety Notices

Warning:

Changes or modifications to this unit not expressly approved by the party responsible for compliance could void the user's authority to operate the equipment.

Note: This equipment has been tested and found to comply with the limits for a Class A digital device, pursuant to Part 15 of the FCC rules. These limits are designed to provide reasonable protection against harmful interference when the equipment is operated in a commercial environment. This equipment generates, uses, and can radiate radio frequency energy and, if not installed and used in accordance with the instructions, may cause harmful interference to radio communications. Operation of this equipment in residential area is likely to cause harmful interference in which case the user will be required to correct interference at his own expense.

A Class A digital device also meets all requirements of the Canadian Interference-Causing Equipment Regulations.



This device complies with Part 15 of the FCC Rules. Operation is subject to the following two conditions: (1) this device may not cause harmful interference, and (2) this device must accept any interference received, including interference that may cause undesired operation.

3030113 Conforms to UL STD 60950
Certified to CAN/CSA STD C22.2 NO. 60950-00

Electrical Ratings: 100-240V~ 3.5A 50-60 Hz
Made in U.S.A.

Appendix C – Warranty, Maintenance, Field Service, and Repair Policy

BRONZE WARRANTY

Equipment purchased from Texas Memory Systems, Inc. (TMS) is warranted for 1 year from the date of shipment. The warranty includes return-to-factory service for equipment that does not meet its published specification during normal operation. Damage due to external causes including, but not limited to abuse, misuse, electrical power problems, or any usage not in accordance with specifications and instructions automatically voids the warranty. TMS ACCEPTS NO RESPONSIBILITY FOR ANY EXPENSES OR DAMAGES INCLUDING LOST REVENUE INCURRED DIRECTLY OR INDIRECTLY AS A RESULT OF DEFECTIVE TMS EQUIPMENT, OR FOR ANY EXPENSES INCURRED DIRECTLY OR INDIRECTLY WHILE THE EQUIPMENT IS BEING REPAIRED AT THE TMS FACTORY.

Return to Factory

During the period that the equipment is covered by warranty, defective equipment can be returned to the factory for repair or replacement. The customer is responsible for shipping the equipment back to the factory, together with a detailed description of the nature of the problem and the tests used to determine the failure. TMS will take all reasonable steps to repair or, at the discretion of TMS, replace the faulty equipment within ten working days of receipt. The customer is responsible for shipping the repaired or replaced equipment back. In an emergency, special arrangements may be negotiated subject to the availability of TMS resources and components.

Telephone and Software Support

Telephone support is available for a period of five years after purchase, during normal TMS business hours. Firmware and software upgrades will be available at no cost.

Field Service

Subject to availability, TMS field service personnel will perform troubleshooting of equipment under warranty without charge for labor. For customers outside the Houston, Texas area, normal travel expenses for field service personnel will be charged, including air fares, hotel accommodation, per-diem meal allowance and other out-of-pocket expenses related to travel or attendance at the customer site.

Repairs>Returns

Prior to returning any product, TMS must first authorize and issue a Return Material Authorization (RMA) number. Any item returned without an RMA number is subject to refusal. Freight collect or COD returns will be refused. To receive an RMA number, contact TMS. When contacting TMS Customer Service please have the TMS part number, the serial number, and a detailed description of the problem. All returned goods must be shipped freight prepaid in the original boxes and packing materials, with the TMS RMA number prominently displayed on the outside of each shipping

container. Once the RMA has been issued, the items must be returned to TMS within thirty (30) days, or else the RMA will be cancelled.

SILVER WARRANTY - Advanced Parts Replacement

Texas Memory Systems Silver Warranty may be purchased which provides all of the features of the Bronze plan. In addition, for one to three years (customer option), TMS will ship a new replacement part to the install site for delivery the next business day if, in the judgment of TMS, an issue as described by the customer is the result of a defective part. TMS must be notified by 2:00 p.m. CST in order to guarantee next day shipping. The customer is responsible for shipping the defective part back to the factory no later than ten days after receipt of the replacement hardware. If TMS has not received the defective hardware after this time, the customer will be charged the full price of the replacement hardware. The customer is responsible for shipping costs. Silver warranty option must be purchased at time of equipment purchase, and does not extend the basic warranty by default.

GOLD WARRANTY - On-site Repair - Business Hours

Texas Memory Systems Gold Warranty may be purchased which provides all of the features of the Silver and Bronze plans. Additionally, in the event of a hardware failure, customer should call a special 800 number for 24/7 technical support 365 days a year to receive technical assistance from Texas Memory Systems technical support staff. Gold Warranty also provides, when necessary, on-site service at the customer location Monday through Friday between the customer location hours of 9:00 a.m. and 5:00 p.m. On-site service is only applicable to non-user replaceable components; on-site service does not cover software related issues. Customer must purchase a spares kit for items that will be maintained under the Gold Warranty.

PLATINUM WARRANTY - On-site Repair - 24/7

Texas Memory Systems Platinum Warranty may be purchased for the United States and most Western European countries* which includes all of the coverage in the Silver and Bronze plans plus the added protection of on-site four (4) hour response, when necessary, at the customer location seven (7) days a week. As with the Gold Warranty, customer is provided a special 800 number for 24/7 technical support 365 days a year. In the event of a failure, customer should call to receive immediate technical assistance from Texas Memory Systems technical support line. On-site service is only applicable to non-user replaceable components; on-site service does not cover software related issues. Customer must purchase a spares kit for items that will be maintained under the Platinum Warranty.

* Please contact TMS for details on coverage areas.

OUTSIDE OF WARRANTY

Faulty equipment may be returned to the factory for repair up to five years after purchase with appropriate RMA. The customer is responsible for shipping the equipment back to the factory, together with a detailed description of the nature of the problem and the tests used to determine the failure. TMS will take all reasonable steps to repair or, at the discretion of TMS, replace the faulty equipment within thirty working days of receipt. Customer will be charged current list prices for replacement components. The customer is responsible for shipping the repaired or replaced equipment back. In an emergency, special arrangements may be negotiated subject to the availability of TMS resources and components. Subject to availability, TMS field service personnel will perform troubleshooting of equipment. For customers outside the Houston, Texas area, daily rates and normal travel expenses for field service personnel will be charged, including air fares, hotel accommodation, per-diem meal allowance and other out-of-pocket expenses related to travel or attendance at the customer site.

Appendix D – Serial Port Settings

You may connect to the management port with either a DB-9 serial cable or an RJ-45 Ethernet cable. The following settings apply to the serial port.

Port Settings

To connect to the RamSan using a serial port connection, use a dumb terminal or a terminal emulation program such as Windows™ HyperTerminal. Set your baud rate to 9600 with 8 data bits, 1 stop bit, no parity, and no flow control.

To connect to the serial port, use the DB-9 non-null serial cable supplied with the system.

Default Account

Use the following default account information to access the RamSan through the serial port:

ssd Login: admin

Pin Out

The RamSan serial port has the following pin out settings:

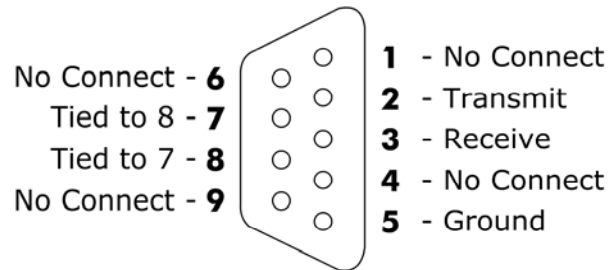


Figure D-0-1: Serial Port Pin Out

Appendix E – SNMP Trap Definitions

The following list provides detailed information about the SNMP v2 notifications (traps) that the RamSan 325 generates because of various system events. Each trap contains a timestamp, trap OID, brief message, and sometimes a relevant system state variable. The system sends traps to each IP address found in the SNMP trap list (configurable through the web and Telnet monitoring tools). Trap OIDs and definitions are located in the MIB file, which can be obtained through the web monitor.

Name	power-on-notif
Description	System has turned on
Includes	Message System Type

Name	power-off-notif
Description	A shutdown sequence has been initiated
Includes	Message

Name	temp-state-notif	
Description	The temperature state has changed	
Includes	Message Temperature State:	
	-1	notImplemented This indicates there may be an SNMP reporting problem
	0	noState N/A
	1	error N/A
	2	warn The temperature has dropped below acceptable levels and should be moved to a warmer environment.
	3	good The temperature is within specification.
	4	warnHigh The temperature level has risen above acceptable bounds. Fans may need to be serviced or the system may need to be moved into a cooler environment.
	5	errorHigh The temperature levels have risen dangerously high. The system will be shutdown to prevent damage to system components.
	6	noDevice N/A
	7	notMonitored Monitoring has been turned off to suppress warnings.

Name	power-state-notif		
Description	The power state has changed		
Includes	Message		
	Power State:		
	-1	notImplemented	This indicates there may be an SNMP reporting problem
	0	noState	N/A
	1	error	Voltage levels are dangerously low; the system may be powered off.
	2	warn	Voltage and/or current levels are below specification.
	3	good	Voltage and current levels are within specification.
	4	warnHigh	Voltage and/or current levels are above specification, or AC power has been lost.
	5	errorHigh	Voltage and/or current levels are dangerously high; the system may be powered off.
	6	noDevice	N/A
7	notMonitored	Monitoring has been turned off to suppress warnings.	

Name	memory-state-notif		
Description	The memory state has changed		
Includes	Message		
	Memory State:		
	-1	notImplemented	This indicates there may be an SNMP reporting problem
	0	noState	N/A
	1	error	N/A
	2	warn	N/A
	3	good	The memory has been working properly since system power on.
	4	warnHigh	There have been one or more corrected ECC errors since system power on.
	5	errorHigh	There have been one or more uncorrected ECC errors since system power on.
	6	noDevice	N/A
7	notMonitored	Monitoring has been turned off to suppress warnings.	

Name	battery-state-notif																												
Description	The battery state has changed																												
Includes	<p>Message</p> <p>Battery State:</p> <table border="1"> <tr> <td>-1</td> <td>notImplemented</td> <td>This indicates there may be an SNMP reporting problem</td> </tr> <tr> <td>0</td> <td>noState</td> <td>N/A</td> </tr> <tr> <td>1</td> <td>error</td> <td>The battery has failed a periodic battery test and may need to be serviced, or one or more of the batteries have voltages that threaten the system's ability to backup data in the event of a power loss.</td> </tr> <tr> <td>2</td> <td>warn</td> <td>The batteries may be charging after being used, this is expected after power loss. Alternatively, the battery voltages may be below specification but not dangerously low.</td> </tr> <tr> <td>3</td> <td>good</td> <td>The batteries are all operating properly.</td> </tr> <tr> <td>4</td> <td>warnHigh</td> <td>Battery voltages or currents are above specification, but not dangerously high.</td> </tr> <tr> <td>5</td> <td>errorHigh</td> <td>Battery voltages or currents are dangerously high; the system should be serviced.</td> </tr> <tr> <td>6</td> <td>noDevice</td> <td>N/A</td> </tr> <tr> <td>7</td> <td>notMonitored</td> <td>Monitoring has been turned off to suppress warnings. Normal in systems without batteries.</td> </tr> </table>		-1	notImplemented	This indicates there may be an SNMP reporting problem	0	noState	N/A	1	error	The battery has failed a periodic battery test and may need to be serviced, or one or more of the batteries have voltages that threaten the system's ability to backup data in the event of a power loss.	2	warn	The batteries may be charging after being used, this is expected after power loss. Alternatively, the battery voltages may be below specification but not dangerously low.	3	good	The batteries are all operating properly.	4	warnHigh	Battery voltages or currents are above specification, but not dangerously high.	5	errorHigh	Battery voltages or currents are dangerously high; the system should be serviced.	6	noDevice	N/A	7	notMonitored	Monitoring has been turned off to suppress warnings. Normal in systems without batteries.
-1	notImplemented	This indicates there may be an SNMP reporting problem																											
0	noState	N/A																											
1	error	The battery has failed a periodic battery test and may need to be serviced, or one or more of the batteries have voltages that threaten the system's ability to backup data in the event of a power loss.																											
2	warn	The batteries may be charging after being used, this is expected after power loss. Alternatively, the battery voltages may be below specification but not dangerously low.																											
3	good	The batteries are all operating properly.																											
4	warnHigh	Battery voltages or currents are above specification, but not dangerously high.																											
5	errorHigh	Battery voltages or currents are dangerously high; the system should be serviced.																											
6	noDevice	N/A																											
7	notMonitored	Monitoring has been turned off to suppress warnings. Normal in systems without batteries.																											

Name	fan-state-notif		
Description	The fan state has changed		
Includes	Message Fan State:		
	-1	notImplemented	This indicates there may be an SNMP reporting problem
	0	noState	N/A
	1	error	One or more fan channels have stopped; temperature warnings that will cause the system to shutdown are imminent.
	2	warn	Single fans in one or more fan channels have stopped or are running slowly. There is no immediate danger, but the fans may need to be serviced.
	3	good	All fans are working properly.
	4	warnHigh	One or more fans are spinning too fast. The system is in no immediate danger but may need to be serviced.
	5	errorHigh	N/A
	6	noDevice	N/A
	7	notMonitored	Fan monitoring has been turned off to suppress warnings.

Name	disk-state-notif		
Description	The disk state has changed		
Includes	Message Device Number Disk State:		
	-1	notImplemented	This indicates there may be an SNMP reporting problem
	0	noState	N/A
	1	error	N/A
	2	warn	N/A
	3	good	The disk is working properly
	4	warnHigh	The disk is rebuilding.
	5	errorHigh	The disk has failed, or is missing from the system.
	6	noDevice	N/A
	7	notMonitored	Monitoring has been turned off to suppress warnings.

Name	array-state-notif
Description	The disk array state has changed
Includes	Message

Name	fc-state-notif		
Description	A fibre channel controller state has changed		
Includes	Message		
	Device Number		
	Disk State:		
	-1	notImplemented	This indicates there may be an SNMP reporting problem
	0	noState	N/A
	1	error	N/A
	2	warn	N/A
	3	good	The FC controller is working properly.
	4	warnHigh	The FC controller has detected some type of error; possibilities include: RX errors, CRC errors, and corrected ECC errors.
	5	errorHigh	The FC controller is not functioning correctly; the controller has failed or detected uncorrected ECC errors.
6	noDevice	N/A	
7	notMonitored	N/A	

Name	lun-change-notif
Description	The LUN table has changed
Includes	Message

Name	fc-config-change-notif
Description	The configuration of a fibre channel controller has changed
Includes	Message Device Number

Name	system-message-notif
Description	A system message
Includes	Message