



tangent

QUATTRO MKII
INTERNET RADIO

USER MANUAL
MODE D'EMPLOI
BEDIENUNGSANLEITUNG
INSTRUCTIEHANDLEIDING
BETJENINGSVEJLEDNING
BRUKSANVISNING
KÄYTTÖOHJE
ISTRUZIONI PER L'USO
MANUAL DEL USUARIO
MANUAL DO UTILIZADOR

UK - USER MANUAL

Contents

Internet Radio Quickstart Guide	7
What you need before you can use your Internet radio	7
Controls	8
Connections	9
Steps for connecting your radio to your wireless network	10
Step 1 - Power up the radio	10
Step 2 - Scan for a wireless network connection	10
Step 3 - Connect to the wireless network	11
Steps for connecting your radio to your wired network	12
Choosing a radio station to listen to	13
<Location>	13
<Genre>	14
<Search>	14
Using your radio for tuning into FM stations	15
Changing the volume	15
Returning to the menu while a station is playing	15
Storing a radio station in a preset	16
Playing a preset radio station	16
Requesting a station that is currently unavailable	16
Stations which enable you to choose what you listen to	16
Setting the clock	17
Setting the alarm	18
Setting the sleep timer	20
Media Player Quickstart Guide	21
Set up your Windows PC to allow the radio to access your audio files via Windows Shares	21
Locate the shared audio files using the radio	21
Listening to a single shared track	22
Listening to a complete shared album	22
Queuing up tracks for playback later	22
Queuing up albums for playback later	22
Controlling playback	23

Browsing the list of tracks currently queued up for playback	23
Removing tracks from the queue	23
Playing tracks in random order	23
Playing tracks in the queue repeatedly	24
Set up a Windows PC to allow the radio to access your audio files via a UPnP server	24
Locating and playing media files using the radio and UPnP	26
Browsing the list of tracks currently queued up for playback	27
Queuing up UPnP tracks for playback later	27
Queuing up albums for playback later	27
Controlling playback	27
Removing tracks from the queue	28
Playing tracks in random order	28
Playing tracks in the queue repeatedly	28
Configure menu	29
Choosing the option you want from the Configure menu	29
<Network Config>	29
<Version>	29
<Upgrade Firmware>	29
<Language>	30
<Factory Reset>	30
<Register>	30
<Clock setup>	30
<Backlight>	30
<Wifi Strength>	30
Configuring 'My Stuff'	31
Registering an account on Reciva's website	31
Configuring 'My Stations'	31
Configuring 'My Streams'	32
Troubleshooting	33
Software licence information	34
Specifications	35

Internet Radio Quickstart Guide

What you need before you can use your Internet radio

Before you can use your Internet radio, you need the following:

- A broadband Internet connection.
- A wireless access point (Wi-Fi) connected to your broadband Internet, preferably via a router.
- If your wireless network is configured to use Wired Equivalent Privacy (WEP) or Wi-Fi Protected Access (WPA) data encryption then you need to know the WEP or WPA code so you can get the Internet radio to communicate with the network.

The Internet radio should work anywhere within up to 30 metres of the wireless access point depending on the wireless router.

Before you continue, make sure that your wireless access point is powered up and connected to your broadband Internet. To get this part of the system working you must read the instructions supplied with the wireless access point.

Controls

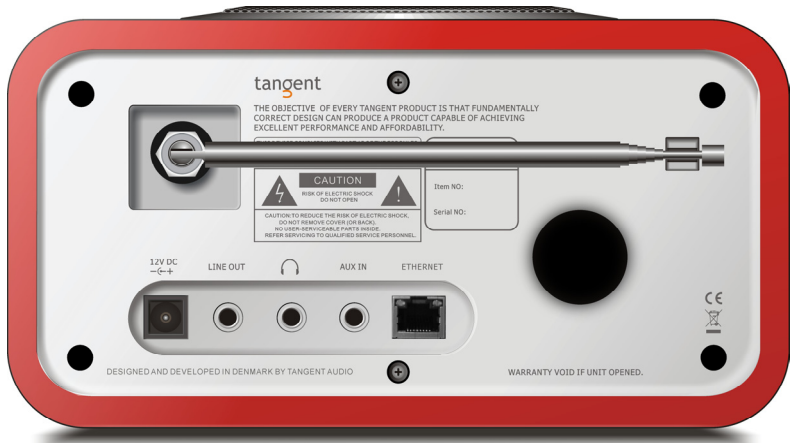


Power	Press this button to turn on and off the radio
Volume	Turn this button clockwise to turn up the volume, and counter clockwise to turn down the volume.
Tune	Turn this button to navigate in menus and between channels.
1 / Prev	This button selects the previous track during media player mode. In radio mode it selects preset number one.
2 / Play	This button starts playback during mediaplayer mode. In radio mode it selects preset number two.
3 / Next	This button selects the next track during media player mode. In radio mode it selects preset number three.
4 / Shuffle	This button starts shuffle mode in media player mode. In radio mode it selects preset number four.
5 / Stop	This button stops playback during media player mode. In radio mode it selects preset number five.
6 / Browse	This button allows you to browse the shared files during media player mode. In radio mode it selects preset number six.
Reply	For future interactive features. See www.reciva.com for further information.
Alarm	This button gives you access to the alarm menu after pressing the SELECT button.
Mode	This button changes between radio mode and AUX input.

Back
Select

This button allows you to go back in menus.
Press this button to confirm your choices in menus etc.

Connections



- 12V DC in** For connecting the included 12V DC power supply.
- Line out** For connecting the radio to an external amplifier.
- Headphone out** For connecting headphones.
- AUX in** For connecting an external sound source, like a MP3 player, Mobile phone, CD player, etc.
- Ethernet (RJ-45)** Use the input for connection if you would like to intergrade the Tangent Quattro to your network via a wired connection.
- FM antenna** This antenna is used to obtain the best possible reception on the built in FM tuner.

Steps for connecting your radio to your wireless network

Step 1 - Power up the radio

Plug the cable from the mains adapter into the socket labelled 12V DC on the back of the radio.

CAUTION: Use only the mains adapter supplied with the radio. Connecting a power supply with a different rating will cause permanent damage to the radio and may be hazardous.

The display on the front of the radio will light up and say:

Tangent
Quattro

Reciva enabled
ARM powered

After a few seconds, this will change to show:

< Scan for networks >

Step 2 - Scan for a wireless network connection

When the display says <Scan for networks>, press the **SELECT** button.

(**Note:** if you make a mistake at any point, press the **BACK** button to go back to the previous screen.)

The radio will now scan for all available wireless networks and will display:

Scanning
|||||

If it can't find one then the display will say:

No Wireless
Networks Found

If this happens then you will have to get your wireless access point working - see the instructions supplied with it.

When the radio finds your wireless network, it displays the ESSID for the access point on the screen - this is a name that is allocated to the access point by the person who set up the network - for example:

< My Home Network >

It is possible, and in some locations highly likely, that your radio will find more than one wireless access point, in which case you can choose which one you want to connect to. Turn the **TUNE** knob on the radio to see the ESSID for each access point the radio has found.

Step 3 - Connect to the wireless network

When the ESSID for the access point you want to connect to is displayed on the screen, press the **SELECT** button.

If your network is not configured to need an encryption code, the screen should say:

Connecting to
network

Then:

Network OK

If the screen displays either:

Enter WEP key

Or:

Enter WPA key

Then the network is using one of the encryption systems: Wired Equivalent Privacy (WEP) or Wi-Fi Protected Access (WPA). You therefore need to enter the correct WEP or WPA code into the radio to get it to communicate with your network.

Only the person who set up the network in the first place knows this code; if that person is not you then you need to find out what it is.

After 3 seconds, the display goes into the code entry mode. To enter the code, use the **TUNE** knob to select each character of the code in turn, pressing the

SELECT button after each character. Note that WEP and WPA codes are sensitive to upper and lower case characters so you must enter them exactly. After the final character, use the **TUNE** knob to select the END character and press the **SELECT** button.

The radio should now be able to connect to the network.

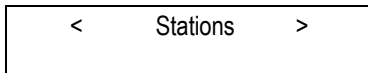
Steps for connecting your radio to your wired network

For connection via a wired network, simply plug in the Ethernet cable from your switch or hub before you connect the radio to power. The radio will always prioritize a wired network in front of a wireless network if it is available.

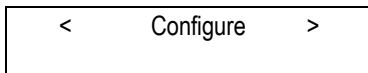
The RJ-45 connector has two LEDs near the port that shows the status of the connection. The Green LED indicates if a live connection is present. The yellow LED indicates if there are any on going traffic on the wired connection.

If you wish to make sure the radio only will attempt to connect to either a wired or a wireless network, you can lock it to use only a wired or wireless connection.

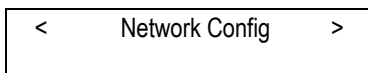
1. Press the **SELECT** button to return to the top-level menu.
(**Note:** if you make a mistake at any point, press the **BACK** button to go back to the previous screen.)



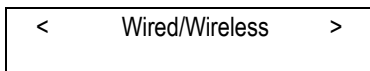
2. Turn the **TUNE** button until the display says < Configure > and press **SELECT** to confirm.



3. Turn the **TUNE** button until the display says < Network Config > and press **SELECT** to confirm.



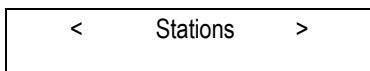
4. Turn the **TUNE** button until the display says < Wired/Wireless > and press **SELECT** to confirm.



5. Now it is possible to choose between Auto, Wired Only and Wireless Only.

Choosing a radio station to listen to

1. Press the **SELECT** button to return to the top-level menu.
(**Note:** if you make a mistake at any point, press the **BACK** button to go back to the previous screen.)



2. If the screen does not say < Stations > as shown above, turn the **TUNE** knob until it does.
3. Press the **SELECT** button.
4. Turn the knob to choose from <Location> , <Genre> or <Search>. <Location> enables you to choose from the radio stations provided by any country which you choose from a list. <Genre> enables you to choose radio stations according to their content, for example Classic Rock, Sport, News, etc. <Search> enables you to enter a name or parts of a name of a station, and the radio will then find the station for you.
5. Press the **SELECT** button to choose the option you want.

<Location>

1. Turn the **TUNE** knob until the display shows the region you want,
2. Press the **SELECT** button.
3. Turn the **TUNE** knob until the display shows the country you want.
4. Press the **SELECT** button.
5. Turn the **TUNE** knob to choose between [All Stations] or [By Genre]
6. Press the **SELECT** button.
7. Turn the **TUNE** knob until the display shows the station you want to listen to.

8. Press the **SELECT** button and wait until the radio connects to that station.

Note that some radio stations do not broadcast 24 hours per day, and some stations are not always on-line.

If this station has on-demand content (that is, it gives the option of listening to programmes which have already been broadcast), see "Stations which enable you to choose what you listen to".

<Genre>

1. Turn the **TUNE** knob until the display shows the type of content you want, then press the **SELECT** button.
2. Turn the **TUNE** knob to choose between [All Stations] or [By Location]
3. Press the **SELECT** button.
4. Turn the **TUNE** knob until the display shows the station you want to listen to.
5. Press the **SELECT** button and wait until the radio connects to that station.

Note that some radio stations do not broadcast 24 hours per day, and some stations are not always on-line.

If this station has on-demand content (that is, it gives the option of listening to programmes which have already been broadcast), see "Stations which enable you to choose what you listen to".

<Search>

1. Turn the **TUNE** knob until the display shows <Search>, then press the **SELECT** button.
2. Turn the **TUNE** knob to enter the name of the station you would like to find. Confirm each letter with the **SELECT** button.
3. Select END and press the **SELECT** button.
4. The radio will find the stations that matches your search criterias.
5. Turn the **TUNE** button to select your preferred station.
6. Press the **SELECT** button and wait until the radio connects to that station.

Note that some radio stations do not broadcast 24 hours per day, and some stations are not always on-line.

If this station has on-demand content (that is, it gives the option of listening to programmes which have already been broadcast), see "Stations which enable you to choose what you listen to".

Using your radio for tuning into FM stations

Your radio supports an FM tuner with RDS, so you will be able to access standard FM stations from it.

1. You can access the radio's FM tuner by pressing the 'Mode' button twice (pressing the button once will cause the radio to play audio from its auxiliary input). Pressing the 'Mode' button a third time will cause the radio to leave its FM tuner state and become an Internet radio again.

You can also access the FM tuner by selecting the 'Tuner' menu item from the radio's main menu.

2. Whilst the radio is in its FM tuner state, it will display what FM frequency it is currently tuned into. Turning the rotary encoder clockwise will increase the FM frequency the radio is tuned into and turning it anticlockwise will decrease the frequency.
3. Press and hold down the **SELECT** button to allow the radio to search for working FM frequencies that it can detect. The radio will continue to scan through all its available FM frequencies until it finds one that is used by a working station.
4. To save an FM frequency to the radio's memory, press and hold down a preset button in the same way that you would save an Internet station to a preset.
5. To access a saved FM frequency, simply press the preset button assigned to the saved frequency.

Changing the volume

Whilst a radio station is playing and is displayed on the radio's screen, you can change the volume simply by turning the **VOLUME** knob. This button will be active at all times.

Returning to the menu while a station is playing

When the Internet radio is playing a radio station it will display the station's name and bit rate. You can return to the radio's menu section at any time by either pressing the **SELECT** button – which will take you to the 'Stations' menu - or the **BACK** button to return to the previous menu item.

Storing a radio station in a preset

Whilst a radio station is playing, hold down one of the preset buttons (numbered 1 to 6) until the screen says

Assigned to Preset #

Where # is the number of the button you held down.

Playing a preset radio station

When a radio station is playing, briefly press one of the preset buttons, 1 to 5, for the station you want. (**Note:** do not hold the button down - if you do then the station currently playing will overwrite the one stored in the preset; be careful).

Requesting a station that is currently unavailable

If you want to listen to a particular radio station which is currently not available online, you can visit the Reciva website at <http://www.reciva.com/> and put in a request to add the station to the list.

Stations which enable you to choose what you listen to

Some radio stations can provide a number of options associated with their station; for example, some stations enable you to listen to programmes that have already been broadcast. When you select a radio station that has this facility, the station does not start playing immediately, but instead the display shows:

< Live >

1. Turn the **TUNE** knob to choose <Live> or <On Demand>, then press the **SELECT** button.
If you choose <Live> then the radio plays the current output from this station as normal.
If you choose <On Demand> then more screens are displayed where you choose what you want to listen to.
What is displayed will depend on the station you have chosen - the following steps are only a guide.
2. When you choose <On Demand>, the display shows the names of the programmes. Turn the **TUNE** knob to choose the program you want, then press the **SELECT** button.

3. When you have chosen the programme you want to listen to, either it will just start playing, or the display may show a list of days for you to choose from - use the **TUNE** knob to set the day the programme was broadcast, then press the **SELECT** button.
4. After you have chosen the day, you may be able to choose the Start Time. Set the Start Time using the **TUNE** knob and press the **SELECT** button.
5. Programmes which enable you to choose the time also enable you to fast-forward and rewind to the part you want while the radio is playing. When you press the **1 / PREV** or **3 / NEXT** button, the elapsed time that the programme has been playing is displayed. You can now turn the **TUNE** knob to change this time. You can also use the **1 / PREV** or **3 / NEXT** buttons to adjust the time. When you press the **SELECT** button again, the programme will play from that point.
6. Once the Internet radio is playing a programme that allows you to choose its start time, the radio's preset buttons become playback-control buttons for the stream; e.g. you can press **2 / PLAY** at any time to pause the stream, and then press **PLAY** to resume playing.

Setting the clock

1. Press the **SELECT** button. (**Note:** if you make a mistake at any point, press the **BACK** button to go back to the previous screen.)
2. Turn the **TUNE** knob until the display says <Configure>.

< Configure >

3. Press the **SELECT** button.
4. Turn the **TUNE** knob until the display says <Clock setup>.

< Clock Setup >

5. Turn the **TUNE** knob until the display says <Clock Format>.

< Clock format >

6. Press the **SELECT** button. Choose between 24 hour format and 12 (AM/PM) format. Confirm your selection by pressing the **SELECT** button.

Clock Format <u>24</u> 12

7. Turn the **TUNE** knob until the display says <Set Time>.

< Set Time / Date >

8. Press the **SELECT** button.

Set Time
14:03

9. Turn the **TUNE** knob until the hour setting is correct, then press the **SELECT** button.

Set Time
15:03

10. Turn the knob until the minute setting is correct, then press the **SELECT** button.

Time Set:
15:06

The display says Time Set with the new time shown beneath for 3 seconds, then returns to the radio station display.

Setting the alarm

1. Press the **ALARM** button. (**Note:** if you make a mistake at any point, press the **BACK** button to go back to the previous screen.)
2. Turn the **TUNE** knob until the display says <Set Alarms>.

< Set Alarms >

3. Press the **SELECT** button.

<1 OFF 00:00 Sunday>

4. Turn the knob to swap between <1>,<2>,<3>,<4>,<5> and <Disable all> and press the **SELECT** button. If you choose <Disable all> then the alarms will be turned off. The display says All Alarms disabled for 3 seconds, then returns to the radio station display.

All Alarms
disabled

5. If you choose one of the numbers between 1 and 5 then the display enables you to set the time for the alarm.

Set Alarm
15:06

6. Turn the **TUNE** knob until the hour setting is correct, then press the **SELECT** button.

Set Alarm
07:06

7. Turn the **TUNE** knob until the minute setting is correct, then press the **SELECT** button.

Alarm Set:
07:45

8. Turn the **TUNE** knob to choose between ONCE, EVERY DAY, WEEKLY, WEEKDAYS and WEEKENDS.
 - If you choose ONCE, you must choose which weekday you want the alarm to be active. Confirm your choice by pressing **SELECT**. Then you must choose if you want the alarm to be a buzzer, the radio station that you are currently listening or a radio station assigned to a preset. Confirm your choice by pressing **SELECT**. The display will show <Alarm set>

< Once >

- If you choose EVERY DAY the alarm will start all days of the week on the selected time. Confirm your choice by pressing **SELECT**. Then you must choose if you want the alarm to be a buzzer, the radio station that you are currently listening or a radio station assigned to a preset. Confirm your choice by pressing **SELECT**. The display will show <Alarm set>
- If you choose WEEKLY the alarm will start every week on the day you will select after woods. Confirm your choice by pressing **SELECT**. Then you must choose if you want the alarm to be a buzzer, the radio station that you are currently listening or a radio station assigned to a preset. Confirm your choice by pressing **SELECT**. The display will show <Alarm set>

< Weekly >

- If you choose WEEKDAYS the alarm will start Monday through Friday every week on the selected time. Confirm your choice by pressing **SELECT**. Then you must choose if you want the alarm to be a buzzer, the radio station that you are currently listening or a radio station assigned to a preset. Confirm your choice by pressing **SELECT**. The display will show <Alarm set>

< Weekdays >

- If you choose WEEKENDS the alarm will start every Saturday and Sunday of the week on the selected time. Confirm your choice by pressing **SELECT**. Then you must choose if you want the alarm to be a buzzer, the radio station that you are currently listening or a radio station assigned to a preset. Confirm your choice by pressing **SELECT**. The display will show <Alarm set>

< Weekends >

The display says Alarm Set with the time of the alarm shown beneath for 3 seconds and then returns to the radio station display. Note: When the alarm goes off, you can press **SNOOZE** on top of the unit to delay the alarm for 5 minutes.

Setting the sleep timer

1. Press the **ALARM** button. (**Note:** if you make a mistake at any point, press the **BACK** button to go back to the previous screen.)
2. Turn the **TUNE** knob until the display says <Sleep Timer>.

< Sleep Timer >

3. Press the **SELECT** button.
4. The display will show <Sleep timeout> and then 00:00:00. Use the **TUNE** knob to adjust the time. If you set the time to 01:30:00, the radio will be set to turn off in one and a half hour. Confirm your choice by pressing **SELECT**.

Sleep Timeout
< 00:00:00 >

Media Player Quickstart Guide

The Media Player allows you to play audio files (AAC, AIFF, AU, MP3, RM, WAV and WMA) and playlists (M3U) stored on a networked PC. It has been verified to work on Windows 2000 and Windows XP.

Set up your Windows PC to allow the radio to access your audio files via Windows Shares

1. Please ensure that your PC is available on the network for your Internet radio, then, using Windows Explorer, locate the folder where your audio files are stored.
2. Right click on the folder.
3. Select 'Properties'.
4. Click on 'Sharing'.
5. Select 'Share this folder on the network' and 'Allow network users to change my files'. Please note, do not try to make your 'My Documents' or any of its sub-folders (e.g. 'My Music') shareable.

Locate the shared audio files using the radio

1. Power up the radio.
2. Wait for 'Stations' to be displayed on the radio, or press the **BACK** button repeatedly until 'Stations' is displayed.
3. Turn the knob until the radio display shows 'Media Player'.
4. Press the **SELECT** button and turn the **TUNE** knob until 'Windows Shares' is displayed.
5. Press the **SELECT** button, turn the **TUNE** knob until 'Scan for PCs' is displayed and press **SELECT** again.
6. The radio will now display 'Finding PCs'. Once the radio has finished, turn the **TUNE** knob to highlight the correct PC.
7. Press the **SELECT** button. The radio will search for shared folders.
8. Turn the **TUNE** knob to highlight the correct shared folder and press **SELECT**.
9. The radio will display 'File Scan...' as it scans through the media files in the shared folder. Text on the bottom row of the display will change to indicate that the file scan is in progress. If you have a large number of audio files this could take several minutes to complete.

10. Once the radio has finished scanning, it will display 'By Album'. You can now browse through the scanned media files, which will now be organised 'By Album', 'By Artist' and 'Playlists' – if available.

Note that the first time the file scan is done a file called '.reciva_media_cache' is written to the folder where the audio files are stored. This is in order to speed up subsequent file scans.

Note: You may be required to enter the user name and password of the computer containing the shared files.

Listening to a single shared track

1. Turn the **TUNE** knob until 'By Artist' is displayed.
2. Press the **SELECT** button.
3. Turn the **TUNE** knob until the required artist is displayed.
4. Press the **SELECT** button.
5. Turn the **TUNE** knob until the required album name is displayed.
6. Press the **SELECT** button. '[Add to Queue]' will be displayed.
7. Turn the **TUNE** knob until the required track is displayed.
8. Press the **SELECT** button. The track will begin playing.

Listening to a complete shared album

1. Turn the **TUNE** knob until 'By Artist' is displayed.
2. Press the **SELECT** button.
3. Turn the **TUNE** knob until the required artist is displayed.
4. Press the **SELECT** button.
5. Turn the **TUNE** knob until the required album name is displayed.
6. Press the **SELECT** button. '[Add to Queue]' will be displayed.
7. Press the **SELECT** button. The album will begin playing.

Queuing up tracks for playback later

1. Highlight the required track.
2. Press the **SELECT** button. 'Track Added To Queue' will be displayed.

Queuing up albums for playback later

1. Highlight the required album.
2. Press the **SELECT** button.
3. Turn the **TUNE** knob until '[Add To Queue]' is displayed.
4. Press the **SELECT** button. 'Tracks Added to Queue' will be displayed.

Controlling playback

1. Use the **5 / STOP** button to stop playback.
2. Use the **2 / PLAY** button to either pause a currently playing track or to restart a currently paused track or to restart a stopped track.
3. Use the **1 / PREV** button to start playback of the previous track in the queue.
4. Use the **3 / NEXT** button to start playback of the next track in the queue.

Browsing the list of tracks currently queued up for playback

1. Press the **6 / BROWSE** button. The currently playing track name will be displayed.
2. Turn the **TUNE** knob to see which tracks are queued up for playback.
3. If you want to jump to a particular place in the queue then press the **SELECT** button when the required track is displayed.

Removing tracks from the queue

1. Press the **6 / BROWSE** button. The currently playing track name will be displayed.
2. Turn the **TUNE** knob to select the track you want to remove from the queue.
3. Press and hold the **5 / STOP** button for 2 seconds and the radio will display: 'Delete Track?'
4. Turn the **TUNE** knob to highlight 'Yes' or 'No'.
5. Press **SELECT** to confirm whether you actually want to delete the track from the queue.
6. If 'Yes' was selected then 'Removed From Queue' will be displayed.
7. To remove all tracks from the queue, keep pressing **BACK** until the 'Media Player' menu item is selected, press **SELECT** and then turn the **TUNE** knob to select 'Clear Queue' and press **SELECT** again.

Playing tracks in random order

1. Select the individual tracks as described previously.
2. Navigate to top-level menu item 'Media Player' using the **SELECT** and **BACK** buttons.
3. Press the **SELECT** button.

4. Turn the **TUNE** knob until 'Playback Mode' is displayed.
5. Press the **SELECT** button.
6. Turn the **TUNE** knob until 'Shuffle' is displayed.
7. Press the **SELECT** button.
8. Turn the **TUNE** knob to select YES/NO to confirm that shuffle mode should be enabled.

Playing tracks in the queue repeatedly

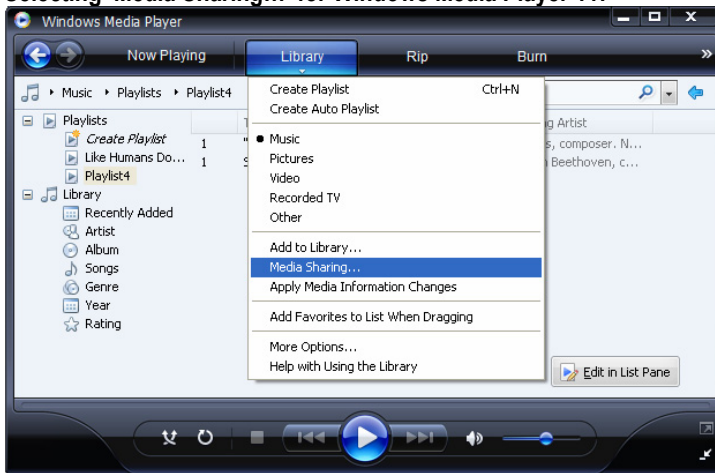
1. Select the individual tracks as described previously.
2. Navigate to top-level menu item 'Media Player' using the **SELECT** and **BACK** buttons.
3. Press the **SELECT** button.
4. Turn the **TUNE** knob until 'Playback Mode' is displayed.
5. Press the **SELECT** button.
6. Turn the **TUNE** knob until 'Repeat' is displayed.
7. Press the **SELECT** button.
8. Turn the **TUNE** knob to select YES/NO to confirm that repeat mode should be enabled.

Set up a Windows PC to allow the radio to access your audio files via a UPnP server

1. If your PC is running Microsoft Windows XP, then you can use Windows Media Player 11 (WMP11) to act as your UPnP (Universal Plug and Play) media server 1.0. Windows Media Player 11 may be downloaded from Microsoft's website and installed by following the instructions detailed in its installation wizard.
2. Once installed, Windows Media Player 11 will create a library from all the media files available to it on your PC. To add new media files to the library, select 'File > Add to Library... > Advanced Options', click 'Add' and choose the files you wish to add and click 'OK'.
3. You will now need to connect your Internet radio to Windows Media Player 11 and configure it to allow the radio to access your media library. In order to this, you will need to do the following:
 - Keep pressing **BACK** to get to the radio's top-level menu and then turn the **TUNE** knob to select 'Media Player'.
 - Press **SELECT** and then turn the **TUNE** knob to highlight 'UPnP Servers'.

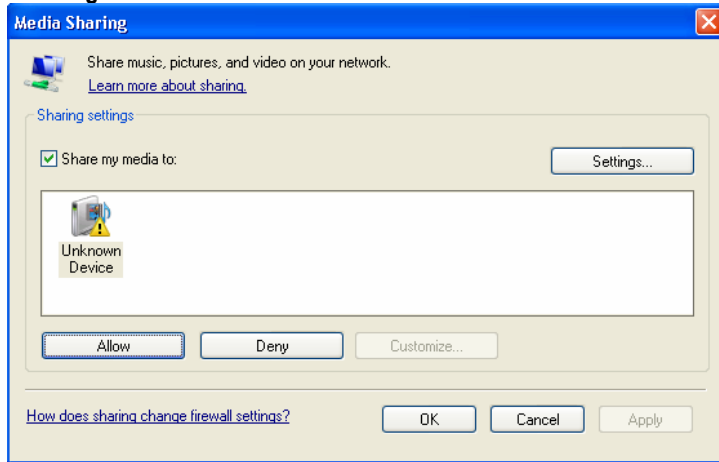
- Press **SELECT** and the radio will scan for all available UPnP servers. **Note**, this may take a few seconds for the radio to complete its scan and before the scan has completed, the radio will display '[Empty]'. The radio will continue to display '[Empty]' if no UPnP servers are found.
 - After a successful scan, select your UPnP server, by rotating the knob if there is more than one UPnP server, and then press **SELECT** (note, your radio will display 'Access Denied' at this stage).
4. Your PC will now prompt you that a device has attempted to connect to your UPnP server. In order to allow the radio to have access to the media files, you will need to click the 'Library' tab from Windows Media Player 11 and select the 'Media Sharing...' item to open the 'Media Sharing' window.

Selecting 'Media Sharing...' for Windows Media Player 11:



5. From the 'Media Sharing' window, the radio will be listed as an unknown device. Click on the unknown device listed, then click the 'Allow' button and then click 'OK'.

Allowing the Radio to Connect:



Locating and playing media files using the radio and UPnP

1. Once the UPnP server is configured to share media files with the Internet radio, you can play the files by doing the following on the radio.
2. Keep pressing **BACK** to get to the radio's top-level menu and then turn the knob to select 'Media Player'.
3. Press **SELECT** and then turn the **TUNE** knob to highlight 'UPnP Servers'.
4. Press **SELECT** and the radio will scan for all available UPnP servers. **Note**, this may take a few seconds for the radio to complete its scan and before the scan has completed, the radio will display '[Empty]'. The radio will continue to display '[Empty]' if no UPnP servers are found.
5. After a successful scan, select your UPnP server, by rotating the knob if there is more than one UPnP server, and then press **SELECT**.
6. The radio will now list the media categories available from the UPnP server, e.g. 'Music', 'Playlists' etc. Turn the **TUNE** knob to select which category you wish to browse, press **SELECT** and turn the **TUNE** knob

to highlight a sub category and press **SELECT** again. For example, you could select 'Music' and then 'Album'.

7. Turn the **TUNE** knob to highlight the media files that you wish to play and press **SELECT**.
8. The radio will display '[Add to Queue]', press **SELECT** and the radio will add the tracks to its queue and begin playing them automatically.

Browsing the list of tracks currently queued up for playback

1. Press the **BROWSE** button. The currently playing track name will be displayed.
2. Turn the **TUNE** knob to see which tracks are queued up for playback.
3. If you want to jump to a particular place in the queue then press the **SELECT** button when the required track is displayed.
4. It is important to note here that media files scanned from the radio's 'Windows Shares' function can also be added to the radio's queue.

Queuing up UPnP tracks for playback later

1. Highlight the required track.
2. Press the **SELECT** button. 'Track Added To Queue' will be displayed.

Queuing up albums for playback later

1. Highlight the required album.
2. Press the **SELECT** button.
3. Turn the **TUNE** knob until '[Add To Queue]' is displayed.
4. Press the **SELECT** button. 'Tracks Added to Queue' will be displayed.

Controlling playback

1. Use the **STOP** button to stop playback.
2. Use the **PLAY** button to either pause a currently playing track or to restart a currently paused track or to restart a stopped track.
3. Use the **1 / PREV** button to start playback of the previous track in the queue.
4. Use the **3 / NEXT** button to start playback of the next track in the queue.

Removing tracks from the queue

1. Press the **BROWSE** button. The currently playing track name will be displayed.
2. Turn the **TUNE** knob to select the track you want to remove from the queue.
3. Press and hold the **STOP** button for 2 seconds.
4. Turn the **TUNE** knob to highlight 'Yes' or 'No'.
5. Press **SELECT** to confirm whether you actually want to delete the track from the queue.
6. If 'Yes' was selected then 'Removed From Queue' will be displayed.
7. To remove all tracks from the queue, keep pressing **BACK** until the 'Media Player' menu item is selected, press **SELECT** and then turn the **TUNE** knob to select 'Clear Queue' and press **SELECT** again.

Playing tracks in random order

1. Select the individual tracks as described previously.
2. Navigate to top-level menu item 'Media Player' using the **SELECT** and **BACK** buttons.
3. Press the **SELECT** button.
4. Turn the **TUNE** knob until 'Playback Mode' is displayed.
5. Press the **SELECT** button.
6. Turn the **TUNE** knob until 'Shuffle' is displayed.
7. Press the **SELECT** button.
8. Turn the **TUNE** knob to select YES/NO to confirm that shuffle mode should be enabled.

Playing tracks in the queue repeatedly

1. Select the individual tracks as described previously.
2. Navigate to top-level menu item 'Media Player' using the **SELECT** and **BACK** buttons.
3. Press the **SELECT** button.
4. Turn the **TUNE** knob until 'Playback Mode' is displayed.
5. Press the **SELECT** button.
6. Turn the **TUNE** knob until 'Repeat' is displayed.
7. Press the **SELECT** button.
8. Turn the **TUNE** knob to select YES/NO to confirm that repeat mode should be enabled.

Configure menu

Choosing the option you want from the Configure menu

1. Press the **SELECT** button.
Note: if you make a mistake at any point, press the **BACK** button to go back to the previous screen.
2. Turn the **TUNE** knob until 'Configure' is displayed
3. Press the **SELECT** button.
4. Turn the **TUNE** knob until the display shows the option you want.
5. Press the **SELECT** button to choose the option shown on the display. The options are explained below.

<Network Config>

Enables you to scan again for connection to another wireless network, or to manually configure the network parameters. Use this if you take the Internet radio to another building where you want to use it
The Network Config menu also allows you to choose whether or not the Internet radio displays a warning message when its network signal strength is low. You can enable this feature by selecting 'Signal Warning' and then selecting 'Yes'.

<Version>

Displays the versions numbers of the various parts of software and hardware on your Internet radio.

<Upgrade Firmware>

Use this option to download new firmware for the radio from the Reciva portal on the Internet. If there is new firmware available, then the radio will prompt you if you want to download it or not. **Note**, at this stage, you can press the radio's **BACK** button to cancel the radio beginning a firmware upgrade. A Firmware upgrade may take several minutes, so do **NOT** switch off the power to the radio until the operation is complete otherwise the radio may become permanently damaged.

<Language>

Allows you to change the display language.

<Factory Reset>

Puts all the settings back to their defaults as they were when they left the factory. If you perform a factory reset on your radio you will lose all your presets and your wireless network connection.

<Register>

This will display a key that can be used to register the radio on the Reciva Customer portal: <http://www.reciva.com/>

<Clock setup>

Use this option to set the time, to set an alarm and to view the current alarm setting, see "Setting the clock", "Setting the alarm".

<Backlight>

Selecting this option will alter the Internet radio's backlight values.

1. After selecting the 'Backlight' menu item, the radio will display its list of three menu modes: 'Inactive', 'Active' and 'Standby'. These three states are explained below:
 - The radio gets into its 'inactive' state when there is no user activity for 30 seconds.
 - The 'active' state is when there is user activity.
 - 'Standby' is the state when the radio has been turned off.
2. Rotate the **TUNE** knob to highlight the desired menu mode and press SELECT.
3. The radio will now display the current backlight value for this menu mode. You can alter this value by rotating the knob to increase or decrease it.

<Wifi Strength>

Use this option to see the signal strength between your Quattro radio and your wireless access point.

Configuring ‘My Stuff’

Registering an account on Reciva’s website

1. Open the website, <http://www.reciva.com>, from your Internet browser.
2. Click on the ‘My Account’ link and follow the on-screen instructions to register an account. Please note, during the registration process, a validation code will be sent to you via email. Please enter this code when prompted to do so.
3. After logging into your account, you will be able to edit your information for ‘My Stations’, ‘My Streams’, ‘My Details’ and ‘My Radios’ from the ‘My Account’ section.
4. You can now add your Internet Radio to your account on the website by accessing the ‘My Radios’ link. From the ‘My Radios’ section, you will need to enter in your radio’s eight-digit serial number, which can be found from the ‘Configure > Version’ menu on the radio, and you will also need to enter in your radio’s registration code - which can be found from the ‘Configure > Register’ menu on the radio.

Configuring ‘My Stations’

1. It is possible to search for radio stations that are available in Reciva’s stations’ database from Reciva’s website. Whenever stations are searched for on the website, they will be displayed in a list of search results together with a link to ‘Add to My Stations’.
2. Clicking on the ‘Add to My Stations’ link, will add the station to your account’s ‘My Stations’ list. This list can be edited by clicking on ‘My Stations’ under the ‘My Account’ section on the website.
3. Once you have Internet stations available in your ‘My Stations’ list, you may play these stations from your Internet Radio. These stations will be available on your radio from the menu item: ‘Stations > My Stuff > My Stations’. Please note, the stations will only be available to your radio once your radio has downloaded a new stations’ list. To cause the radio to download a new stations’ list immediately, please remove and reconnect the power to your radio.

Configuring 'My Streams'

1. Once logged into your Reciva website account, you can add your own Internet radio streams to the 'My Streams' section, which is listed under the 'My Account' section
2. Clicking on 'My Streams' will prompt you to enter the station's name and its media stream URL. The media stream URL should be a link to a website's actual audio stream. If you have any doubt about locating the media stream URL from a webpage, then please refer to the FAQs section on Reciva's website, <http://www.reciva.com>.
3. Once you have Internet radio streams available in your 'My Streams' list, you may play these stations from your Internet Radio. These stations will be available on your radio from the menu item: 'Stations > My Stuff > My Streams'. Please note, the streams will only be available to your radio once your radio has downloaded a new stations' list. To cause the radio to download a new stations' list immediately, please remove and reconnect the power to your radio.

Troubleshooting

If you experience any trouble with your wireless Internet radio, then you may find it useful to visit the help section on our webpage: <http://www.reciva.com>

If you have trouble connecting the radio to your wireless network, these steps may help to resolve the problem:

1. Confirm that a Wi-Fi connected PC can access the Internet (i.e. can browse the web) using the same network.
2. Check that a DHCP server is available, or that you have configured a static IP address on the radio. You can configure a static IP address on the radio using the menu item 'Configure -> Network Config -> Edit Config', and then select 'No' for 'Auto (DHCP)'.
3. Check that your network's firewall is not blocking any outgoing ports. As a minimum, the radio needs access to UDP and TCP ports 80, 554, 1755, 5000 and 7070.
4. Check your access point does not restrict connections to particular MAC addresses. You can view the radio's MAC address using the menu item 'Configure -> Network Config -> View Config -> MAC address'.
5. If you have an encrypted network, check that you have entered the correct key or passphrase into the radio. Remember that text-format keys are case sensitive. If, when attempting to connect to an encrypted network, your radio displays: 'Wireless error' followed by a 5-digit number, then please ensure that you enter the correct passphrase for the network. If the problem persists, then you may need to consult your network configuration.

If your radio can connect to the network successfully, but is unable to play particular stations, it may be due to one of the following causes:

1. The station is not broadcasting at this time of the day (remember it may be located in a different time zone).
2. The station has reached the maximum allowed number of simultaneous listeners.
3. The station is not broadcasting anymore.
4. The link on the radio is out of date.
5. The Internet connection between the server (often located in a different country) and you is slow.

Try using a PC to play back the stream via the broadcaster's web site.

If you can play back the station with a PC, use the form at <http://www.reciva.com/> to notify us so that we can change the station data that is used by the radio.

Software licence information

This product contains software licensed under version 2 of the GNU Public License and version 2.1 of the GNU Lesser Public License, The source code for this software is available from:

<http://www.reciva.com/gpl/>

This product includes technology owned by Microsoft Corporation and under a licence from Microsoft Licensing GP. Use or distribution of such technology outside of this product is prohibited without a license from Microsoft Corporation and/or Microsoft Licensing, GP as applicable.

Specifications

Connection:	802.11b/g
Security:	WEP, WPA1 (TKIP) and WPA2 (TKIP)
File formats:	Real audio, MP3, Windows media streams, OGG vorbis, AAC, WAV, AIFF and AU
Controls:	Power button, Volume knob, Tuning knob, Alarm button, Mode button, Back button, 6 / Browse button, 5 / Stop button, Reply button, 4 / Shuffle button, 3 / Next button, 2 / Play button, 1 / Prev button and Snooze button
Speaker:	Full range dynamic speaker (3")
System Output:	5 Watt RMS
Connections:	3,5mm jack for stereo analog audio headphone output 3,5mm jack for stereo analog audio AUX input 3,5mm jack for stereo analog audio Line output RJ-45 connector for wired LAN connection 12 V DC input
Power:	DC 12 V
Frequency range:	80 – 20.000Hz
Dimensions:	210 x 111 x 145mm (W x H x D)
Weight:	2,40Kg (Power supply and radio)



DESIGN AND ENGINEERING

THE OBJECTIVE OF EVERY TANGENT PRODUCT IS THAT FUNDAMENTALLY CORRECT DESIGN CAN PRODUCE A PRODUCT CAPABLE OF ACHIEVING EXCELLENT PERFORMANCE AND AFFORDABILITY.

www.tangent-audio.com

Item no.: 40510.02

