

Synology DS-106 Series

User's Guide



Syno106Series_UG_20060519_enu

Copyright Notice

All title, copyright and other intellectual property rights in and to the Software Product (including but not limited to any relevant media, images, photographs, animations, video, audio, music, text, and applets incorporated into the Software Product), the accompanying manuals and other documents, and on-line or electronic documents, if any, (collectively "Software Product") are owned by Synology Inc. Unless otherwise expressly licensed by Synology Inc. in writing, any provision of the Software Product does not represent any license of any of the above rights.

Copyright © 2004-2006 Synology Inc.; All rights reserved.

Trademark Notice

Synology and other names of Synology products are trademarks or registered trademark of Synology Inc.

Microsoft, Windows, Windows 2000, and Windows XP are trademarks of Microsoft Corporation.

Mac, Mac OS, and Mac OS X are trademarks of Apple Computer, Inc., registered in the U.S. and other countries.

Other products and company names mentioned herein are trademarks of their respective holders.

Limited Warranty

Synology provides limited warranty for its product only to the person or entity that originally purchased the product from Synology or its authorized distributor or retailer. Synology guarantees that every hardware portion of the product will be free from physical defects in material and workmanship for one year from the date of purchase. If the product proves defective during this warranty period, contact with the local dealer in order to obtain assistance. Be sure to have your proof of purchase and a barcode number from the product's packaging on hand when asking for assistance. Synology 106 series server is a barebones system so Synology makes no warranty of the optional hard disk.

Synology provides no warranty or representation, expressed, implied, or statutory, with respect to its products or the contents or use of this documentation and all accompanying software, and particularly disclaims its quality or performance for any purpose.

Synology makes no guarantee that all data stored on Synology 106 series server is always secure without any risks of data losing. Synology reminds you to back up the data periodically. Under no circumstances shall Synology be liable in any way to the user for damages, including any savings, lost profits or other incidental or consequential damages arising out of the use of, or inability to use Synology products.

Synology Inc. products are not intended for use in medical, life saving, or life sustaining applications.

Revisions

Synology reserves all rights to revise or update its products, software, or related documentation without further notice.

Synology Inc. reserves the right to revise this publication and to make changes in the content hereof without the obligation to notify any person of such revision or changes.

Index

Safety Warnings and Instructions	4
About this User's Guide	5
Getting to know your Synology Server	6
Introduction	6
File Server	6
Backup Server	6
FTP Server	6
Entertainment Application.....	6
USB Printer Server.....	7
Specification	7
Limitations	8
Appearance.....	9
LED Indication Descriptions Table	10
Managing Synology Server	12
Entering Web Management UI.....	12
Using Setup Utility	12
Accessing Web Management UI Manually	14
Managing Synology Server.....	15
Joining Windows Domain.....	15
Assigning Access Right for Domain Users	16
Resetting Administrator Password.....	16
Reinstalling Synology Server	16
Accessing Synology Server Data	17
Shared Folders.....	17
System Built-in	17
Administrator-Created.....	18
Setting Access Control.....	18
Setting Encoding	19
Accessing Shared Folders	19
Windows User.....	19
Mac User.....	21
Through FTP	21
Server Backup and PC Backup Solutions	23
Local Backup.....	23
Network Backup	24
Backing up Personal Data.....	24
Before starting.....	25
Minimum System Requirement	25
Installing Synology Data Replicator II.....	25
Using Synology Data Replicator II	26
Backing up Synology Server Settings.....	26
Synology Server to PC Client	26
Synology Server to another Synology Server	27
Sharing USB Printer	28
Extra Features	29
Multimedia Service.....	29
Download Station	29
Enabling Download Station	29
Installing Download Redirector.....	29
Web Station	30
Enabling Web Station and MySQL.....	30
Web Station's detail description.....	30
Photo Station	31
Enabling Photo Station	31
Photo Station's detail description	31
USBCopy	31
Setting USBCopy Target Location	31

Mail Notification.....	32
Firmware Update.....	32
Expanding HDD Capacity.....	34
External HDD.....	34
External USB HDD.....	34
External SATA HDD.....	34
Replacing Larger Internal HDD.....	35
Troubleshooting.....	36
Appendix.....	37
Recommended Peripherals.....	37
Recommended SATA HDD.....	37
Recommended USB Printer.....	37
Recommended UPS.....	39
Recommended NTP Server.....	39

Safety Warnings and Instructions

Please read this safety warnings and instructions carefully before use, and keep it well for your future reference.

1. Do not place the product in direct sunlight or near chemicals. Make sure that the environment does not experience abrupt changes in temperature or humidity.
2. Before cleaning, please unplug the power cord first. Wipe the product with wet paper towels. Do not use chemical or aerosol cleaners to clean it.
3. Do not put the product close to any liquid.
4. Do not put the product on a cart, table, or desk, which is not stable to avoid falling off.
5. Keep the product stand erect. Do not lay it down horizontally.
6. There are ventilation openings on the side covers. To make sure the product is operating under normal condition, please do not block or cover the openings to avoid overheating.
7. Take extra care to allow sufficient air circulation or spaces for the product.
8. The connections and equipment which provides electricity to the product should be capable of operating safely with the maximum power requirements. In case of a power overload, the supply circuits and supply wiring should not become hazardous.
9. Do not allow anything to rest on the power cord and do not locate the product where anyone can walk on the power cord.
10. Do not attempt to repair the product by yourself. Opening or removing the covers can expose you to dangerous high voltage or other risks. Refer all service to qualified service personnel.

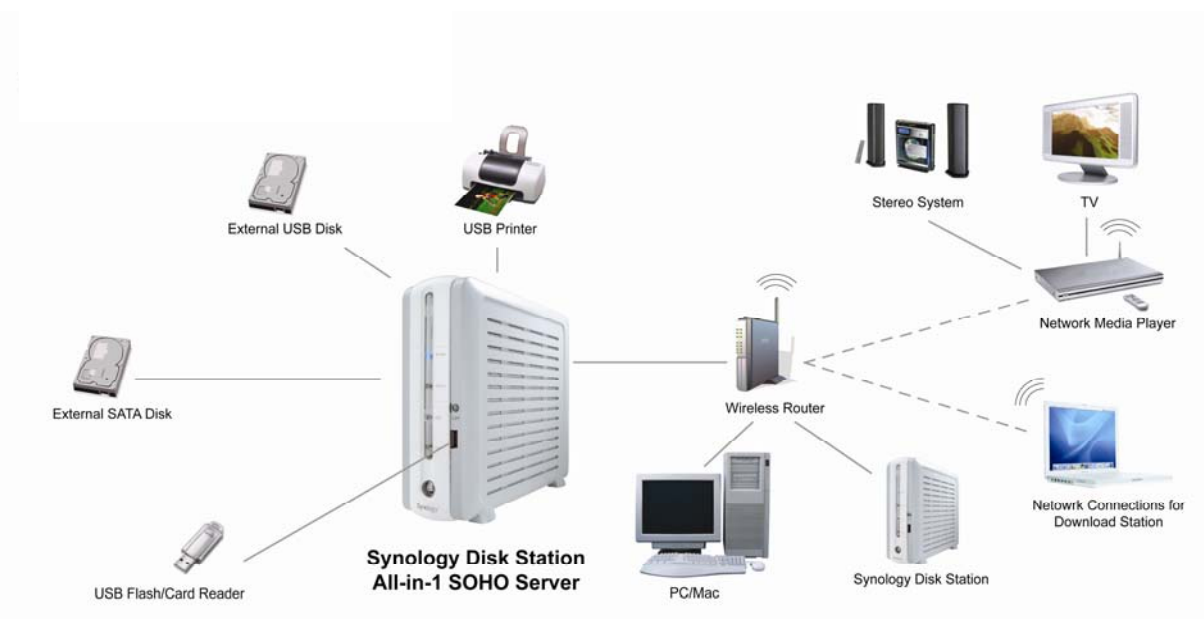
About this User's Guide

This user's guide covers all the functions of Synology 106 series server. Some of the functions may only be available on specific models.

Getting to know your Synology Server

Introduction

Congratulations on your purchase of Synology 106 series server ("Synology Server"). Synology Server is specially designed for SOHO and home users with multiple functions:



File Server

Windows and Mac users can easily share files within Intranet or through Internet. Unicode language support makes sharing different language files from Synology Server without problems.

Backup Server

Synology Server provides diverse backup solutions to backup Synology Server data or backup PC data to Synology Server.

FTP Server

Synology Server provides FTP service with bandwidth restriction and anonymous login.

Entertainment Application

Personal or corporate website can be easily setup using "Web Station" function. By integrating with PHP and MySQL, user can also setup online shop.

“Photo Station” provides easy and fast method to share your photos online. “Download Station” allows you to download files from Internet through BitTorrent, FTP, and HTTP to Synology Server. Moreover, if you have UPnP DMA connected in the LAN, you can enable “Multimedia Service” and share the multimedia files on Synology server.

The build-in “Copy” button on the device allows instant copy of photos from the camera to Synology Server.

USB Printer Server

You can share USB 2.0 Printer through Local Area Network.

Specification

Item	DS-106e	DS-106
Hard Disk Interface	SATA	SATA
Maximum Capacity	500GB	500GB
USB 2.0 Ports	*3	*3
LAN Port	RJ-45 10/100/1000Mbps	RJ-45 10/100/1000Mbps
USB Copy	Yes	Yes
Windows User	Windows 98 onward	Windows 98 onward
Mac User	Mac OS 9 onward	Mac OS 9 onward
Maximum User Accounts	128	128
Maximum Group Accounts	64	64
Maximum Shared Folder	100	100
Maximum Concurrent Connections	32	32
NTP	Yes	Yes
FTP	Yes	Yes (+SSL/TLS)
Windows ADS/NT4 Domain	No	Yes
Language Localization	English, French, German, Korean, Italian, Spanish, Traditional Chinese, Simplified	English, French, German, Korean, Italian, Spanish, Traditional Chinese, Simplified

Item	DS-106e	DS-106
	Chinese	Chinese
eSATA Port	*1	*1
HDD Hibernation	Yes	Yes
Event Notification	Yes	Yes
Agency Certifications	FCC Class B 、 CE 、 BSMI 、 C-Tick	FCC Class B 、 CE 、 BSMI 、 C-Tick
Dimension	18.1cm x 21.2cm x 6.0cm	18.1cm x 21.2cm x 6.0cm
Weight	0.5kg (excluding HDD)	0.5kg (excluding HDD)
Power Consumption And Environment Requirements	<u>Line voltage</u> 100V to 240V AC <u>Frequency</u> 50Hz to 60Hz <u>Power Consumption</u> Standby: 14.64W Working: 17.88W Hibernation: 6.72W <u>Operating Temperature</u> 50 to 95° F (10 to 35° C) <u>Storage Temperature</u> -40 to 185° F (-10 to 70° C) <u>Relative Humidity</u> 5% to 95% RH <u>Maximum Operating Altitude</u> 10,000 feet	<u>Line voltage</u> 100V to 240V AC <u>Frequency</u> 50Hz to 60Hz <u>Operating Temperature</u> 50 to 95° F (10 to 35° C) <u>Storage Temperature</u> -40 to 185° F (-10 to 70° C) <u>Relative Humidity</u> 5% to 95% RH <u>Maximum Operating Altitude</u> 10,000 feet

Limitations

1. Supports up to 1 USB printer.
2. Supports up to 3 USB disks.
3. USB Copy function only supports USB disks with FAT32 file system.
4. Some digital cameras are defined as a Still Image Device, such as Canon. For such devices, Synology Server only supports USB Copy function (No USB share function).
5. For Mac users, Synology Server supports only USB printers with PostScript.

Appearance

Front View

Rear View



Article Name	Location	Description
Power Button	Front Panel	<p>The Power Button is used to turn the Synology Server On or Off.</p> <ol style="list-style-type: none"> 1. It will take approximately 30 seconds to 1 minute to turn on Synology Server. 2. To turn Off Synology Server, press the Power Button until you hear a "beep" and the Power LED begins blinking. The shutdown process will complete in 30 seconds.
COPY Button	Front Panel	<p>The COPY Button lights up when you connect a USB Device (for example: digital camera, USB flash disk). Pressing the button will copy the data from the connected USB device to the Synology Server's internal HDD.</p>

USB Port	Front Panel	The Synology Server offers 3 USB ports for adding additional external hard drives, USB printers, or other USB devices. One at the front, and other two at the back.
Smart Fan Ventilation	Front Panel	The Smart Fan is to exhaust waste heat out of the Synology Server. The Smart Fan will start automatically when the internal system temperature reaches 46 °C. If the fan is malfunctioning, system will "beep" every five seconds.
eSATA Port	Back Panel	The eSATA port is for connecting with an external SATA HDD.
RESET Button	Back Panel	<ol style="list-style-type: none"> To restore IP, DNS, passwords for the "admin" account to default value, and reset the "guest" account to the "enabled" status. (Please refer to "Resetting Administrator Password" chapter.) To reinstall the Synology Server. (Please refer to "Reinstalling Synology Server" chapter.)
LAN Port	Back Panel	The LAN port is where you connect RJ-45 cable to Synology Server.
DC IN 12V Port	Back Panel	The DC IN 12V Port is where you connect the AC Power Adapter.

LED Indication Descriptions Table

LED Indication	Color	Status	Description
Power	BLUE	Blinking	<ul style="list-style-type: none"> During System boot-up During System shutdown
		Solid Light	System Ready
		Light Off	Power Off
Status	Green/Orange	Solid Green Light	Used HDD Capacity below 85%
		Solid Orange Light	<ul style="list-style-type: none"> Used HDD Capacity between 85% - 95% HDD has not been formatted
		Blinking Orange Light	<ul style="list-style-type: none"> Used HDD Capacity over 95% HDD status abnormal Restoring to default value
		Blinking after 5 seconds of Solid Orange Light	No HDD
		Light Off	System Startup/Off
HDD	Green	Blinking	During Read/Write
		Light Off	Can not Read/Write

LED Indication	Color	Status	Description
LAN	Green	Blinking	Normal operation
		Light Off	LAN cable not connected

Managing Synology Server

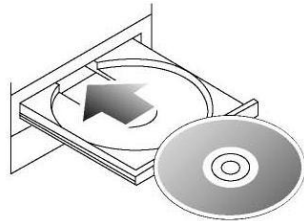
Entering Web Management UI

There are two options for you to enter the management UI:

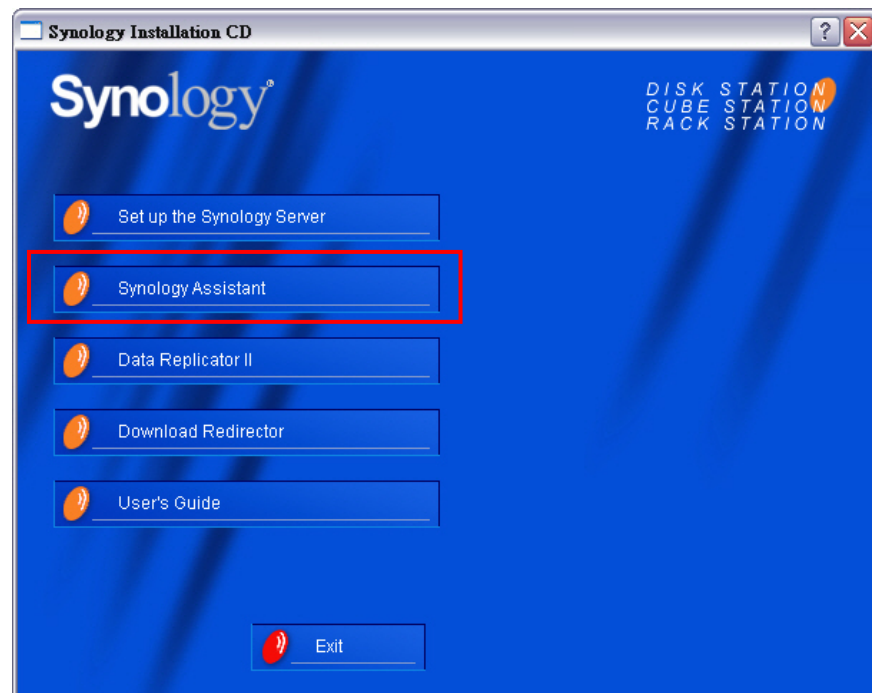
Using Setup Utility

[Windows User]

1. Insert the Installation CD into CD/DVD-Rom Drive.



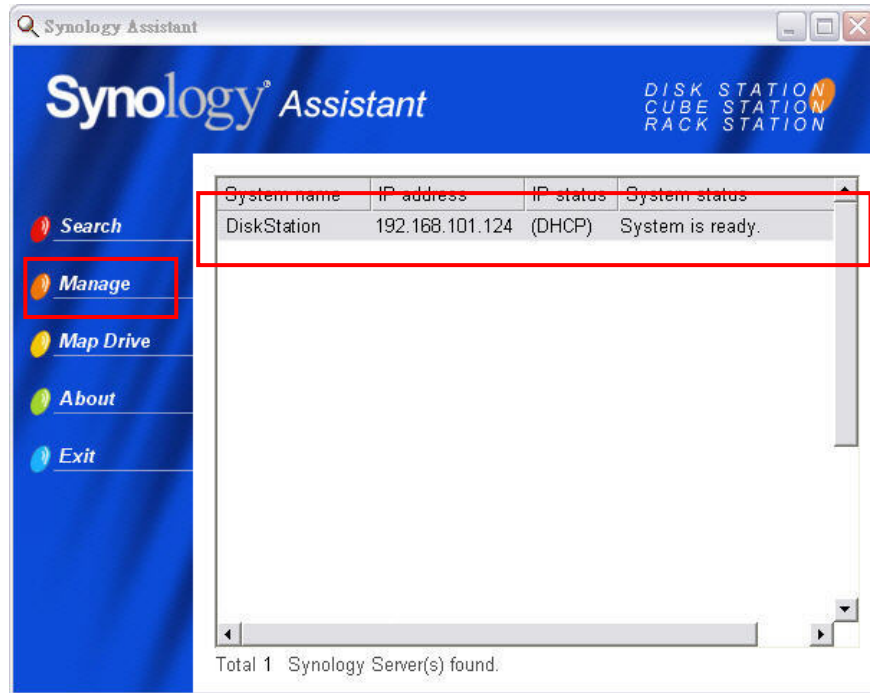
2. Choose "Synology Assistant" at the Autoup Menu.



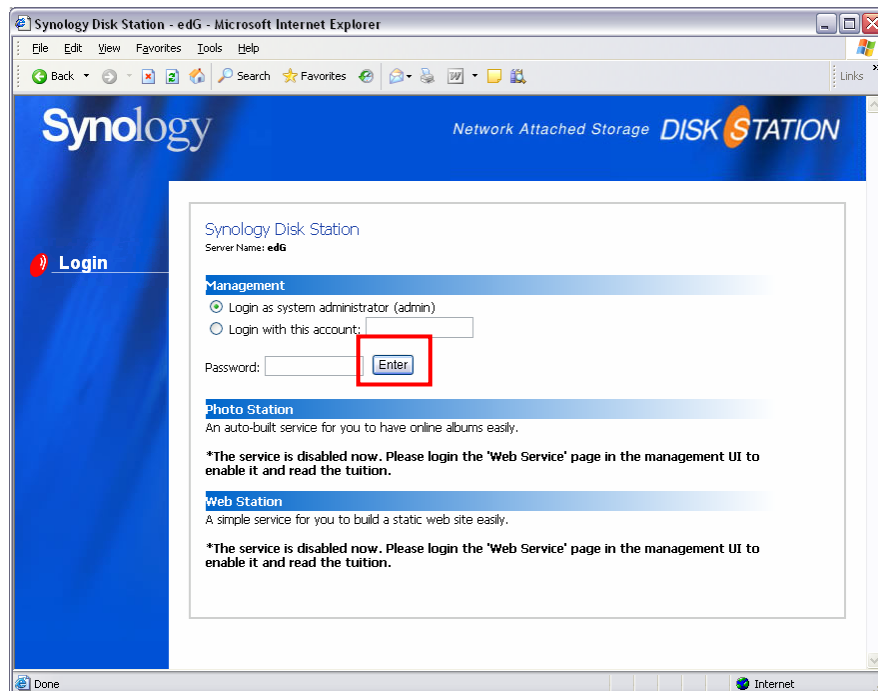
3. Follow the steps to complete installation.
4. After installation, double click on the desktop icon to execute the program.



5. Choose the server you want to manage and click “Manage” to enter the Web Management UI.



6. Choose “login as system administrator (admin)”, input password and click “Enter”.



[Mac OSX User]

1. Insert the Installation CD into CD/DVD-Rom Drive.
2. Double-Click CD-Rom Drive thumbnail.
3. Double-Click "MacOSX" thumbnail.
4. Double-Click "Synology Assistant-SYNOLOGY.dmg" thumbnail.
5. Double-Click "Synology Assistant" thumbnail to run setup wizard.
6. Choose a Synology Server and click "Manage" to enter the Web Management UI.
7. Choose "login as system administrator (admin)", input password and click "Enter".

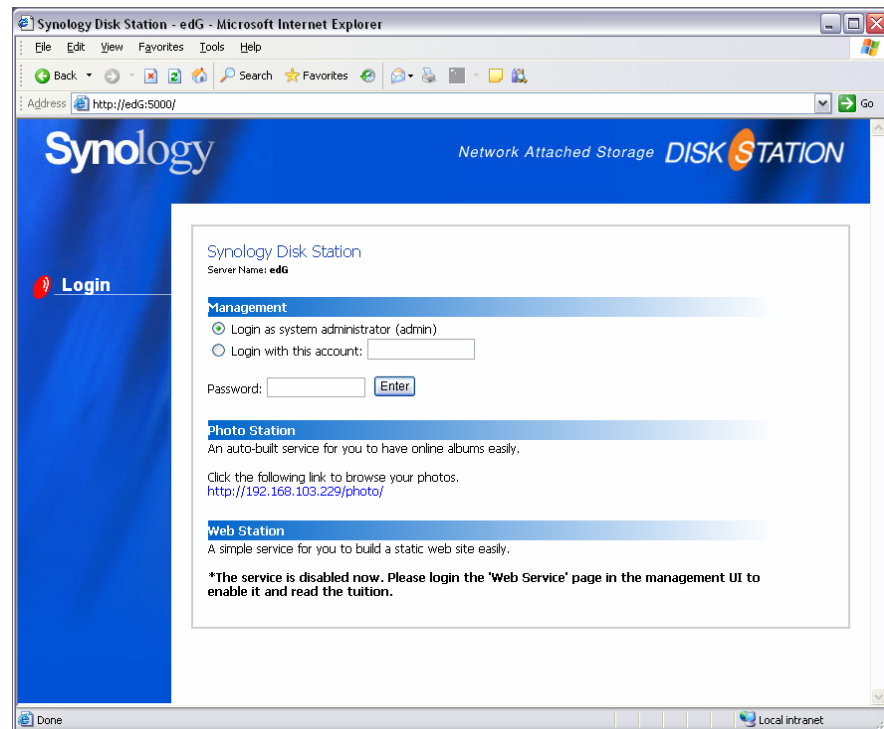
Please note:

To ensure flawless management process, please use the following browsers:

Client	Browser
PC	IE 6.0 onward
Mac OS X 10.3.x	Safari 1.3 onward
Mac OS X 10.4.x	Safari 2.0 onward

Accessing Web Management UI Manually

1. Open web browser.
2. At the address line input "http://Synology_Server_Name:5000/", where "Synology_Server_Name" is the name you setup for Synology Server during the setup process.



3. Press "Enter" key on the keyboard.

4. Choose "login as system administrator (admin)".
5. Input password for admin.
6. Click "Enter" to access Web Management UI.

Managing Synology Server

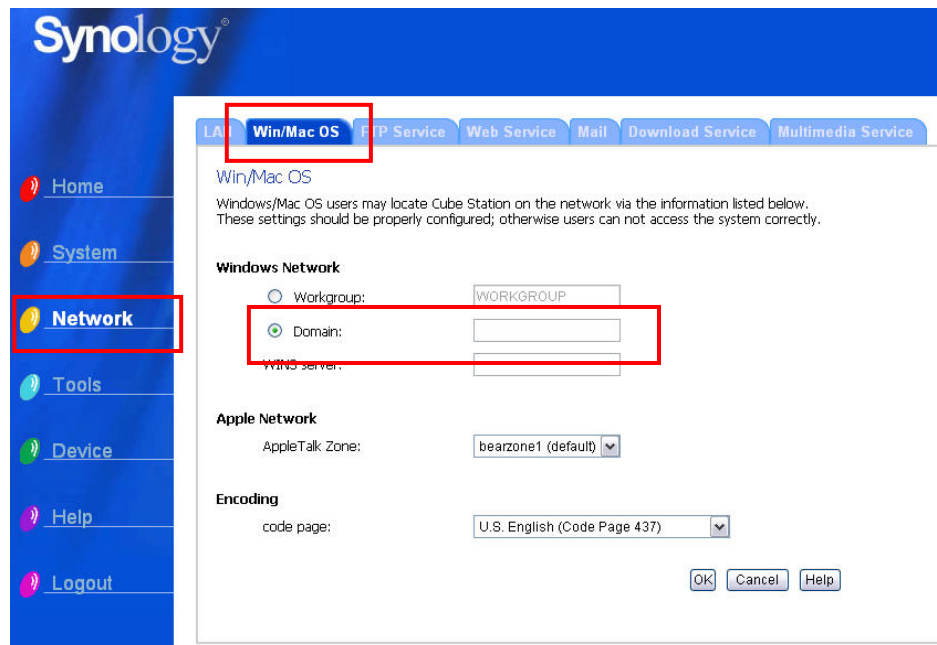
You can start managing Synology Server in Web Management UI. Synology Server Web Management UI provides distinctive and straight forward design for easy management. You will find an online "Help" button on every page of the Web Management UI. Click on the "Help" button for further information whenever you encounter any problem.



Joining Windows Domain

You can add Synology Server to Windows domain and let the domain users access Synology Server. Synology Server supports both Active Directory Service (ADS) and NT4 domain. After being added to a Windows domain, the domain users only need to enter their domain account and password when trying to access the Synology Server. If the authentication succeeds, access will be granted.

For the detailed description, please refer to Help on "Network > Win/Mac OS" page.



Assigning Access Right for Domain Users

After adding Synology Server to a Windows domain, you can grant domain users' access rights to the shared folders on Synology server. Please refer to the "Accessing Synology Server Data > Setting Access Control" section for details.

Resetting Administrator Password

Pressing the "RESET" button and hold it for about 4 seconds before you heard a beep sound will restore IP, DNS, passwords for the "admin" account to default value, and reset the "guest" account to the "enabled" status.

Reinstalling Synology Server

If for any reason you have to reinstall the Synology Server, you can press the RESET button on the back panel twice, and the Synology Server will be reinstalled. The data saved on the Synology Server will not be erased during the reinstallation. However, for security's reason, we strongly recommend that you back up the data on the server.

To reinstall the server:

1. Press the "RESET" button and hold it for about 4 seconds. Release the button when the Synology Server emits a beep sound.
2. Within the next 10 seconds, press the "RESET" button and hold it for about 4 seconds again. Release the button when the Synology Server emits three beep sounds.
3. Run Synology Assistant, and set up the Synology Server again.

Accessing Synology Server Data

File sharing service is Synology Server's major function. Administrator can setup access rights for users either with Windows or Mac to access shared folders.

Shared Folders

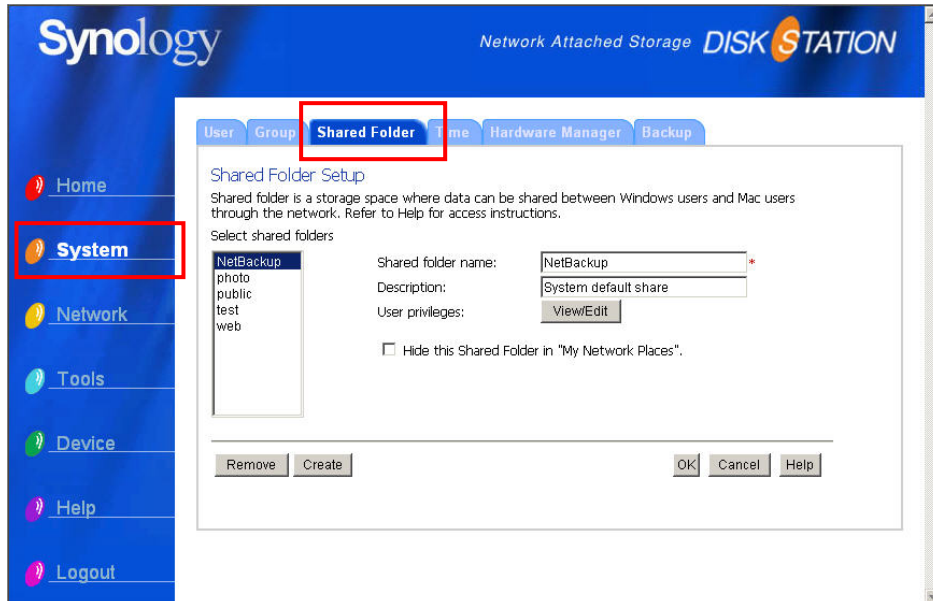
System Built-in

Name	Description
public	After Synology Server is successfully set up, the shared folder "public" will be available for access instantly.
web	The shared folder "web" is for storing web pages. When Web Station is enabled, users can browse the constructed website through browser. For detailed information, please refer to "Extra Features > Web Station" section.
photo	The shared folder "photo" is for storing image files. Files in "photo" shared folder can be browsed when Photo Station or Multimedia Service is enabled. For detailed information, please refer to descriptions of Photo Station and Multimedia Service.
music	Music files in "music" shared folder can be browsed through UPnP DMA when Multimedia Service is enabled. For detailed information, please refer to descriptions of Multimedia Service.
video	Video files in "video" shared folder can be browsed through UPnP DMA when Multimedia Service is enabled. For detailed information, please refer to the page "Network > Multimedia Service."
NetBackup	The shared folder "NetBackup" is for saving backed up files using Network Backup. Please refer to the page "Tools > Network Backup."
usbshare	After you connect external USB HDD to Synology Server's USB port, system will automatically create a shared folder with the prefix "usbshare". Refer to "Expanding HDD Capacity > External HDD" section for details.
satashare	After you connect external SATA HDD to Synology Server's eSATA port, system will automatically create "satashare" shared folder. Refer to "Expanding HDD Capacity > External HDD" section for details.

Please note: Administrator can not delete the shared folders mentioned above.

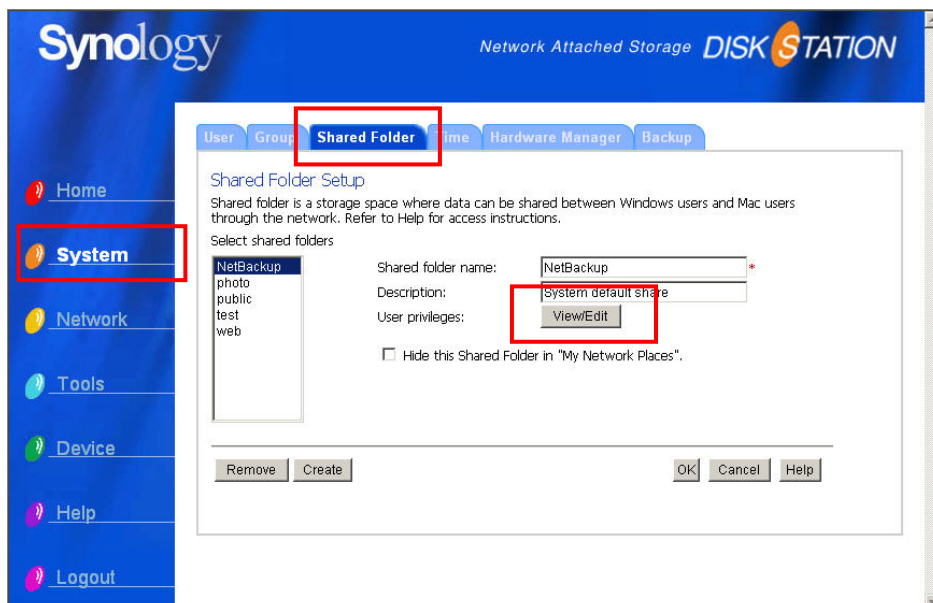
Administrator-Created

Apart from the above system built-in shared folders, Administrator can create shared folders on the page "System > Shared Folder" of the Web Management UI. Shared folders created by Administrator can be deleted or renamed at any time.



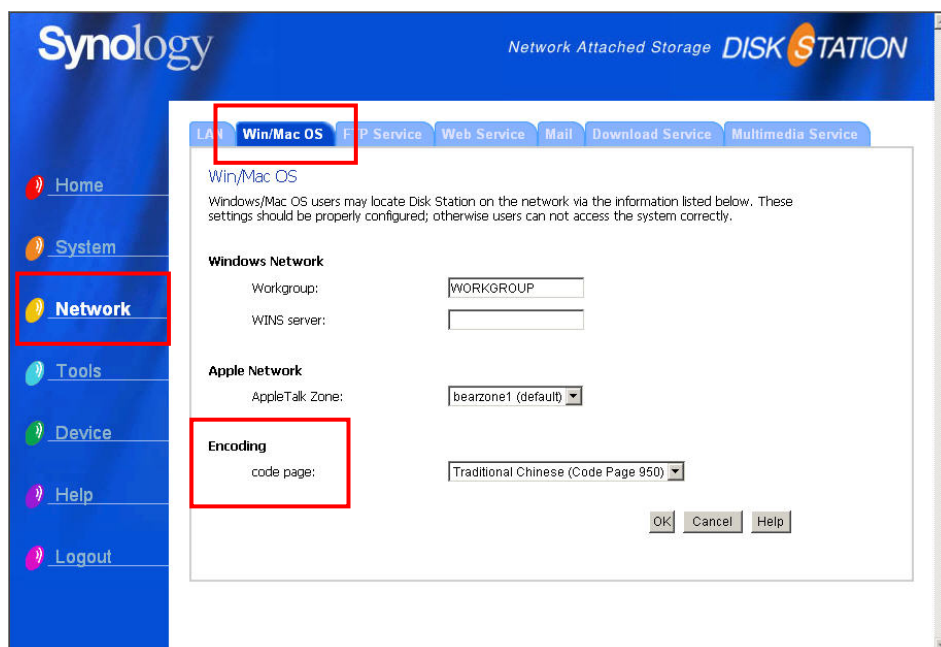
Setting Access Control

For security reasons, Administrator can go to the page "System > Shared Folder" of the Web Management UI and set access rights for different users by selecting the shared folder and clicking "View/Edit".



Setting Encoding

Synology Server uses Unicode to manage files. The benefit of using Unicode is to avoid file inaccessibility between users who use different languages. However, for users without Unicode support on their PC, Administrator can set the encoding method of the files to overcome the problem. Please go to the page “Network > Win/Mac OS” of the Web Management UI for the setting.



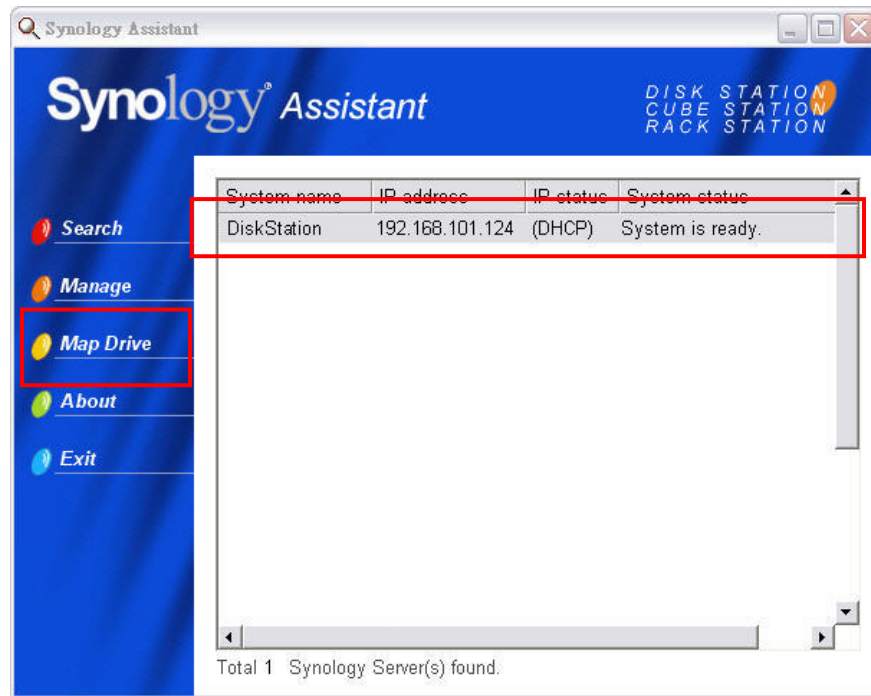
Accessing Shared Folders

Windows User

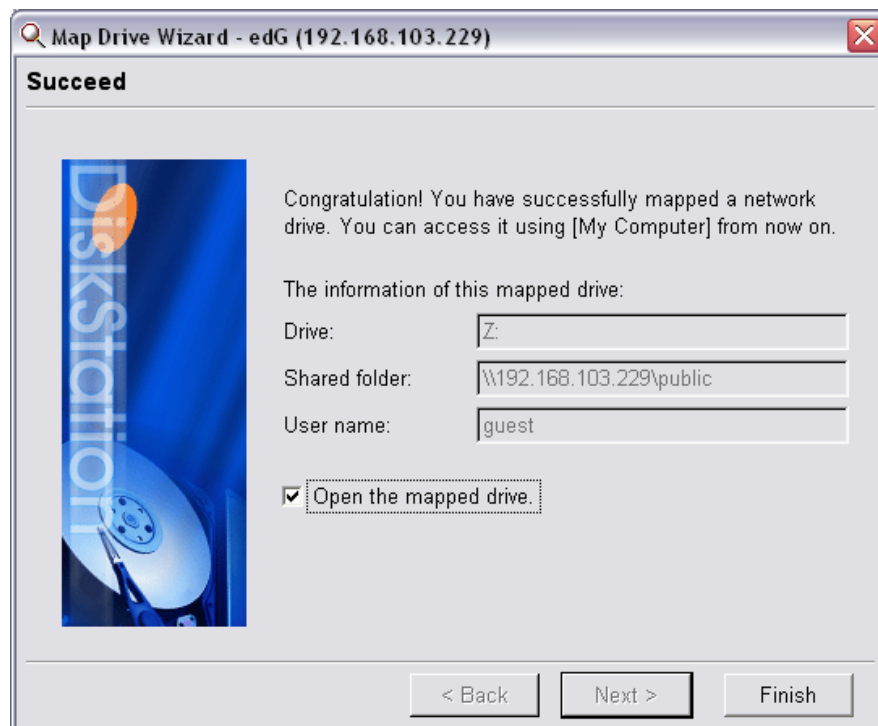
Windows users can access the Synology Server's shared folders by using Setup Utility to map Network Drive

Synology Assistant, which is included in the Installation CD, not only helps Administrator manage Synology Server, but also provides users with the following steps to map Network Drive:

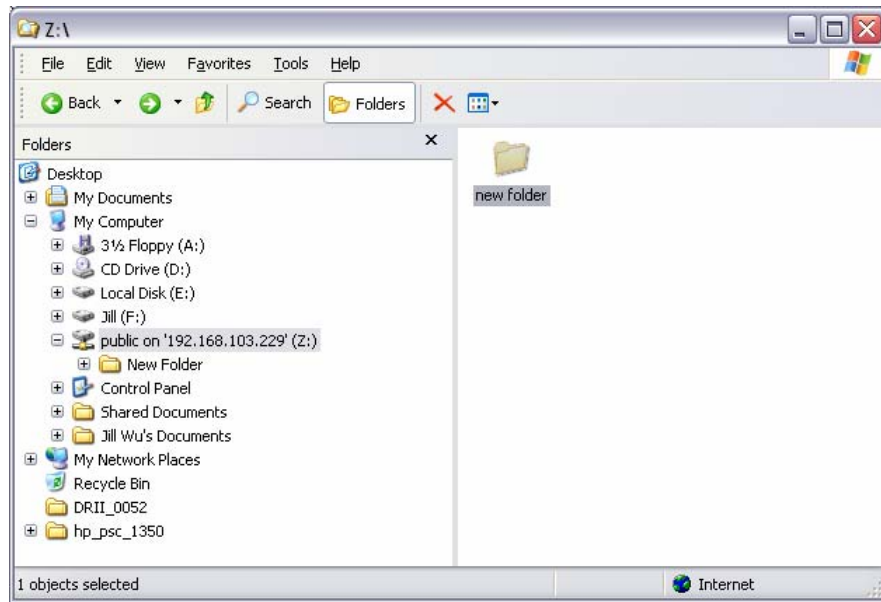
1. Run Synology Assistant.
2. Choose the server to map network drive.
3. Click on the “Map Drive” button on the left.



4. Follow the on-screen steps to finish the setup.

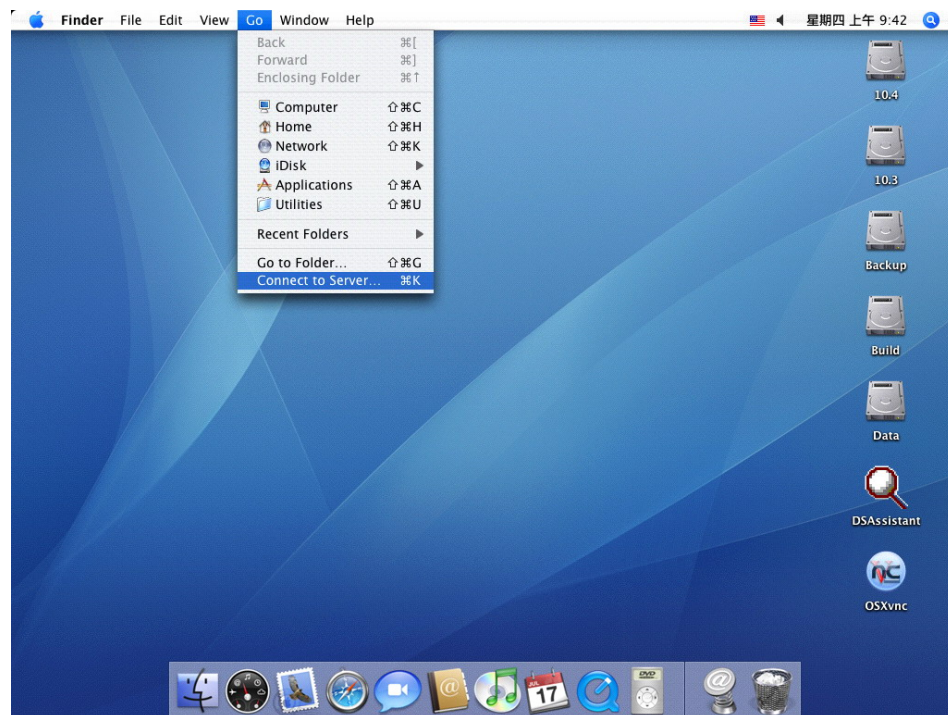


5. Upon completion, user can access the mapped shared folder in Windows Explorer.



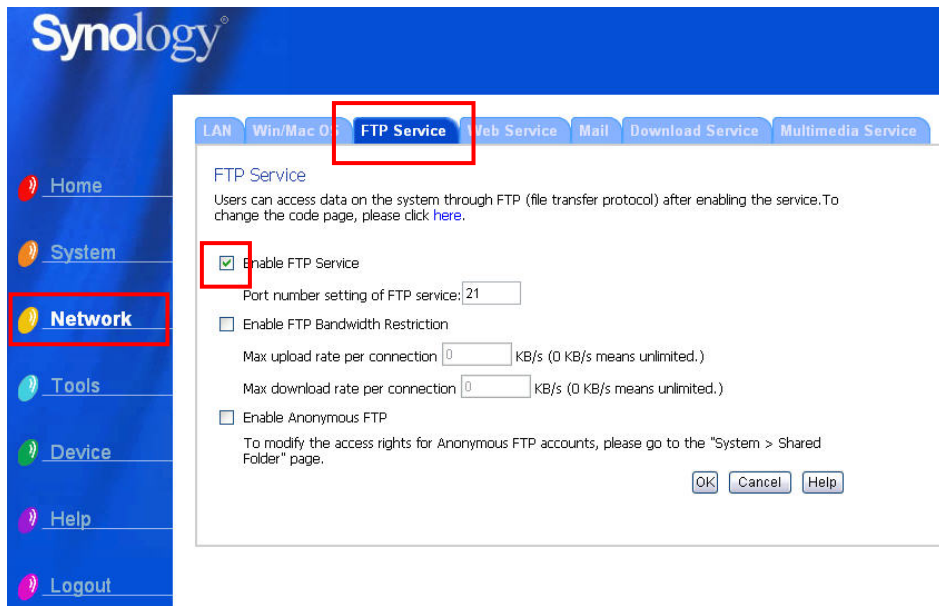
Mac User

Mac user can use "Go > Connect to Server" to choose a Synology Server and access the shared folder on the server.



Through FTP

Synology server provides FTP service. Administrator can enable FTP service on the "Network > FTP Service" page of the Web Management UI. Windows users and Mac users can thus access data in Synology Server by FTP Protocol. To prevent data from being access while transferring, users can also use "FTP over SSL" or "FTP over TLS" to make the data more secure. For the detailed information of using FTP and its limitation, please refer to Help on "Network > FTP Service" page.



Please Note:

1. Administrator has the option to adjust FTP Bandwidth or enable Anonymous login.
2. FTP Service does not support Unicode. Before enabling FTP Service, please go to "Network > Win/Mac OS" page and setup codepage according to user's client PC.

Server Backup and PC Backup Solutions

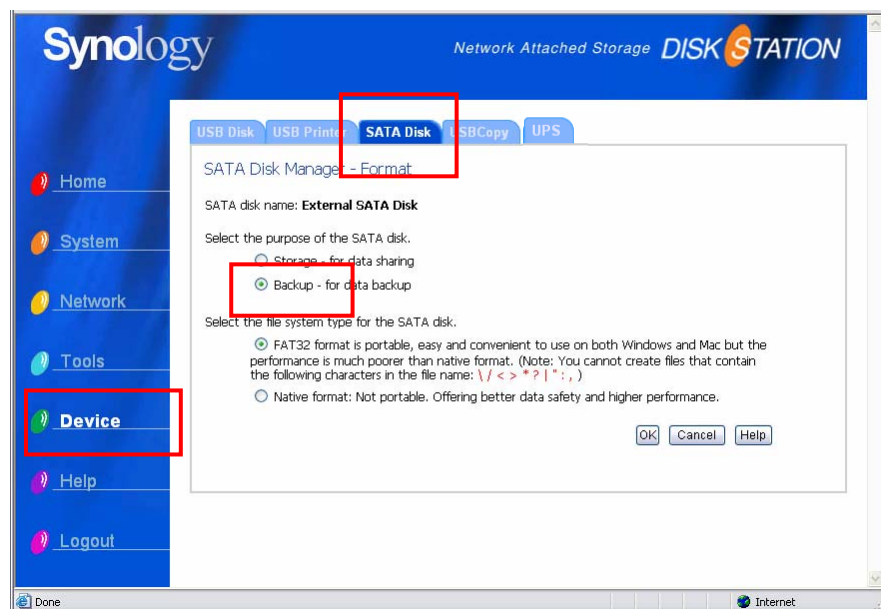
Synology Server provides complete backup solutions:

1. By using “Local Backup”, Administrator can backup Synology Server’s data to external USB or SATA HDD.
2. By using “Network Backup”, Administrator can backup Synology Server’s data to another Synology Server.
3. By installing Synology Data Replicator II software on the client PC, Windows users can backup data from PC to Synology Server.
4. Administrator can also backup Synology Server’s User, Group, and Shared folders (see details below).

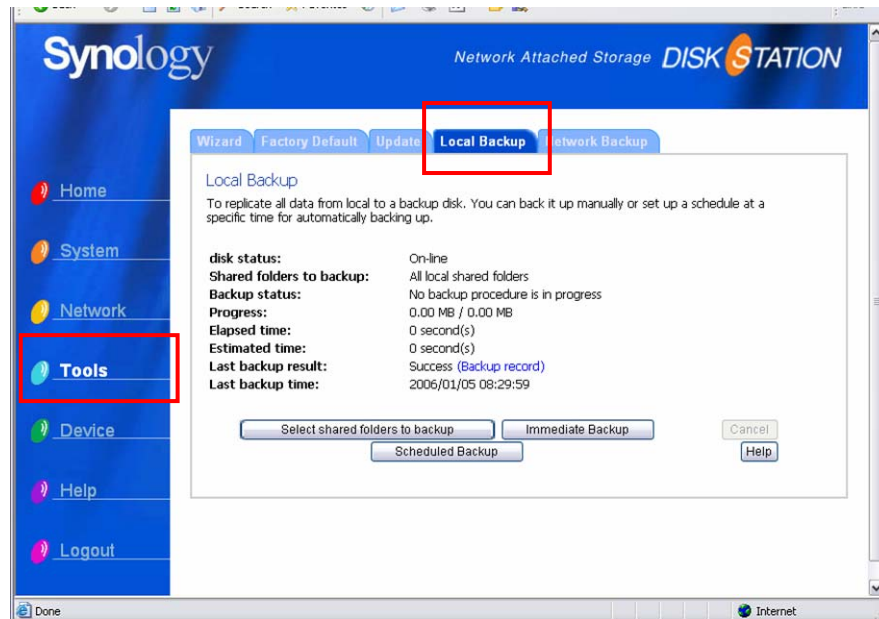
Local Backup

Please follow the below steps to perform Local Backup:

1. Connect an external USB HDD or SATA HDD to the corresponding port on Synology Server.
2. Go to the page “Device > USB Disk” or “Device > SATA Disk” of the Web Management UI, and format the HDD as “backup purpose”.

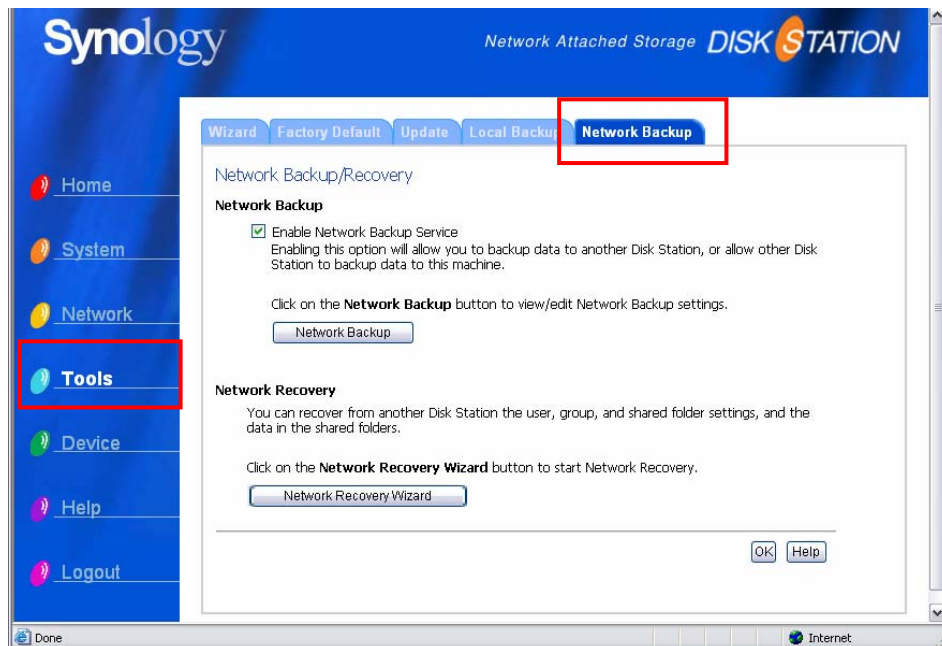


3. Go to the page “Tools > Local Backup” to setup your backup task.



Network Backup

Network Backup allows Administrator to backup Synology Server's data to another Synology Server through network. Please ensure Network Backup option is enabled on both Target and Client Server before performing the task. Go to "Tools > Network Backup" page for detail information.



Backing up Personal Data

Windows users can install "Synology Data Replicator II" backup software which can be found on the installation CD. They can backup client PC data to Synology Server to maintain a good copy of data whenever needed.

Using Synology Data Replicator II, users can:

1. Monitor selected folders on client PC and perform real-time backup when any modification to the file is made.
2. Adjust backup versions and restore points.
3. Restore backup data on Synology Server to client PC at user's preference.

Before starting

Before using Synology Data Replicator II, please ensure:

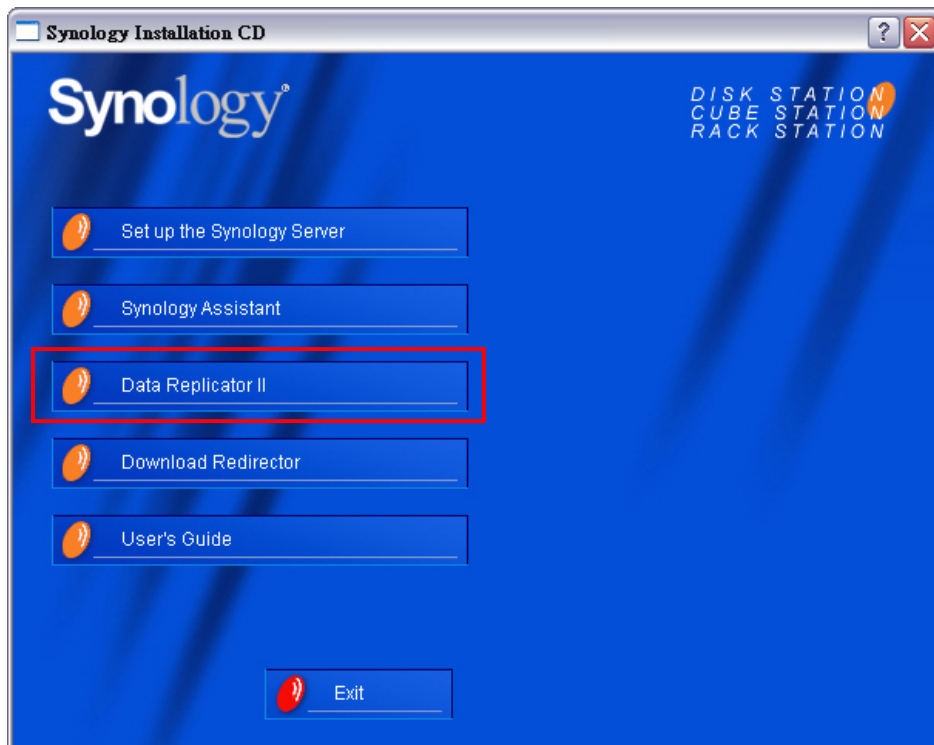
1. Client PC and Synology Server uses the same encoding for backup to perform adequately.
2. Synology Data Replicator II is the next generation of Synology Data Replicator. It can only restore backup data on Synology Server generated by itself. If users have backed up data on Synology Server using Synology Data Replicator, we recommend restoring data on Synology Server to PC first before using Synology Data Replicator II.

Minimum System Requirement

1. Free HDD Space: 5MB
2. Operating System: Windows 98/ME/NT/2000/XP
3. Best Screen Resolution: 1024*768 and above
4. Microsoft Networking over TCP/IP enabled and has network connection with Synology Server.

Installing Synology Data Replicator II

Insert Installation CD into Windows user CD/DVD-Rom drive. Click on "Synology Data Replicator II", and follow on-screen instructions.



Using Synology Data Replicator II

After installation, double click on the software icon to execute the program. Click on “Help” for detail description.

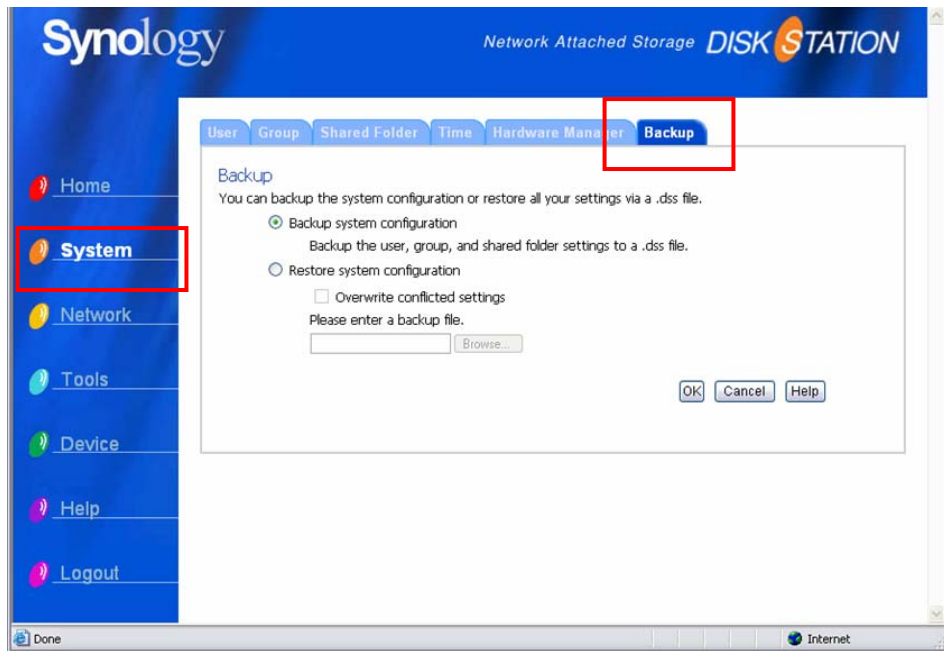


Backing up Synology Server Settings

There are two options for you to backup Synology Server’s “User”, “Group”, “Shared Folder” settings for easy maintenance and restoration.

Synology Server to PC Client

Go to the page “System > Backup” of the Web Management UI to backup settings from Synology Server to PC Client.

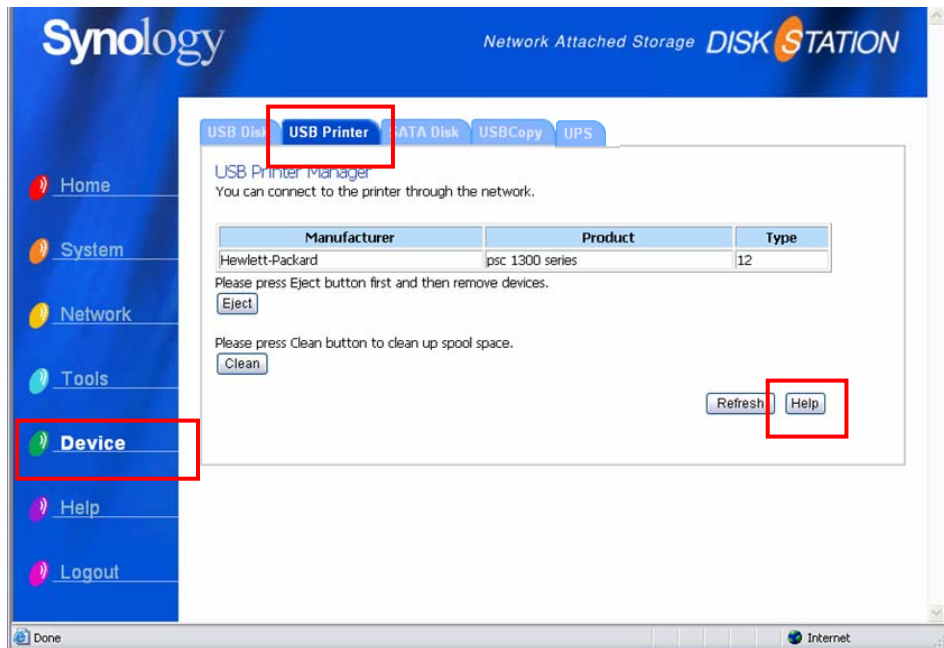


Synology Server to another Synology Server

The data backed up to another Synology Server using "Network Backup" automatically includes the "User", "Group", "Shared Folder" settings. When you recover the data, you can choose if you want to recover these settings.

Sharing USB Printer

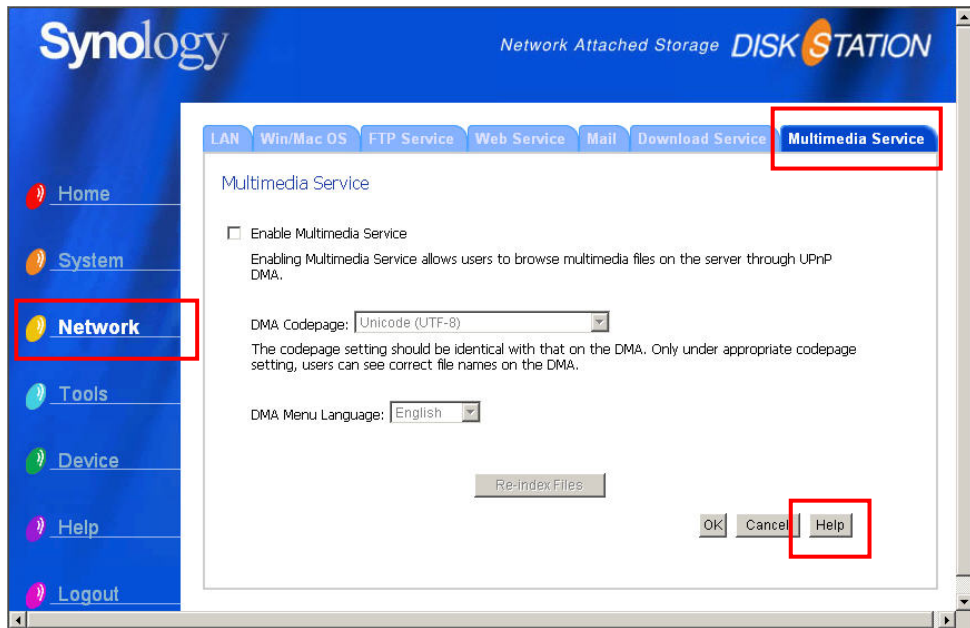
Synology Server supports Windows 98 and above users, and Mac OS 9 and above users to share USB Printer. For the detailed settings on different platforms, please refer to the page “Device > USB Printer” of the Web Management UI.



Extra Features

Multimedia Service

When “Multimedia Service” is enabled, users who have UPnP DMA (Digital Media Adapter) can browse multimedia files on Synology server. Please go to “Network > Multimedia Service” page for further setup.



Download Station

Synology server can download files from Internet through BitTorrent, FTP, and HTTP. PC users and Mac users can install Download Redirector to add download tasks and manage the download queue.

Before start adding download tasks, you should enable Download Station on the server and install Download Redirector on PC or Mac.

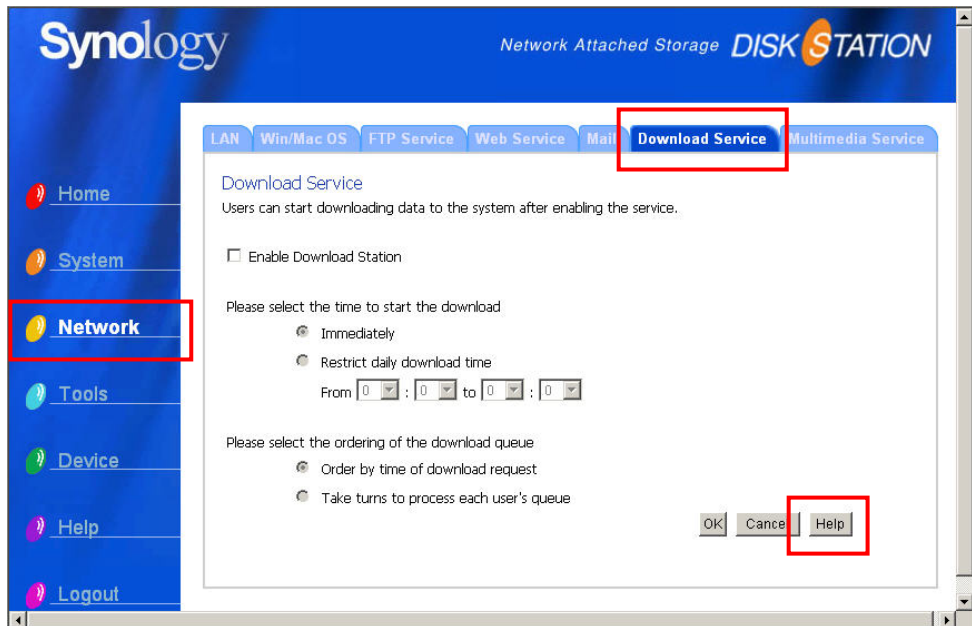
Enabling Download Station

Go to the “Network > Download Service” page.

Installing Download Redirector

Insert Installation CD into the CD/DVD-Rom drive. Click on “Download Redirector”, and follow on-screen instructions.

For the detailed description of Download Redirector, please refer to Help on Download Redirector program window.



Web Station

Personal or corporate website can be easily setup using “Web Station.” By integrating with PHP and MySQL, users can also setup online shop. PHP support is turned on by default, MySQL requires manually enabling.

Enabling Web Station and MySQL

Go to the “Network > Web Service” page.

Web Station’s detail description

Please click on “Here” link under “Enable Web Station”.

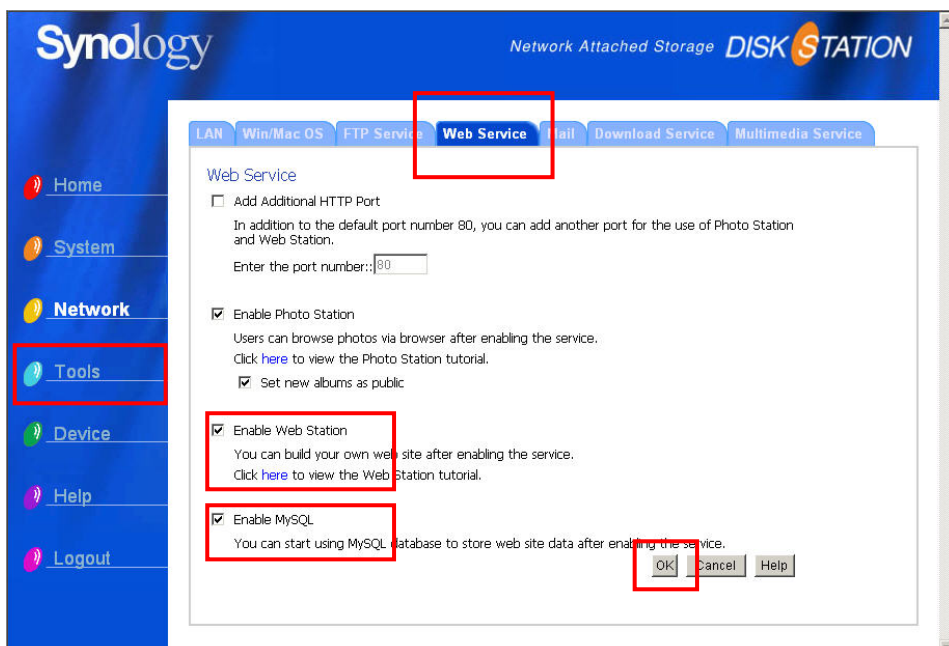


Photo Station

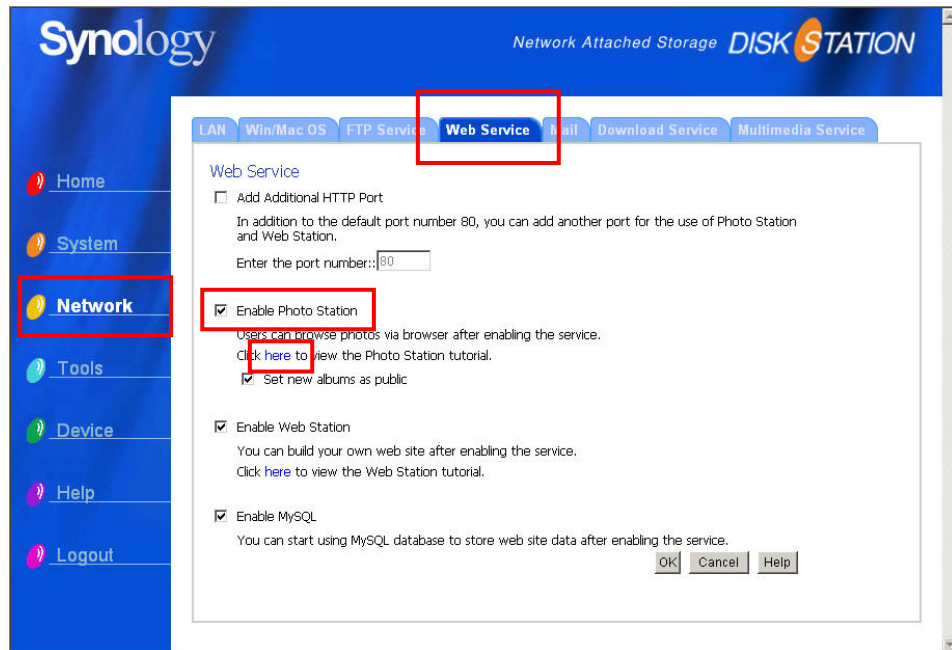
“Photo Station” provides easy and fast method to share your photos online. Access right control can be setup to effectively manage each album.

Enabling Photo Station

Go to the “Network > Web Service” page.

Photo Station’s detail description

Please click on “Here” link under “Enable Photo Station”.

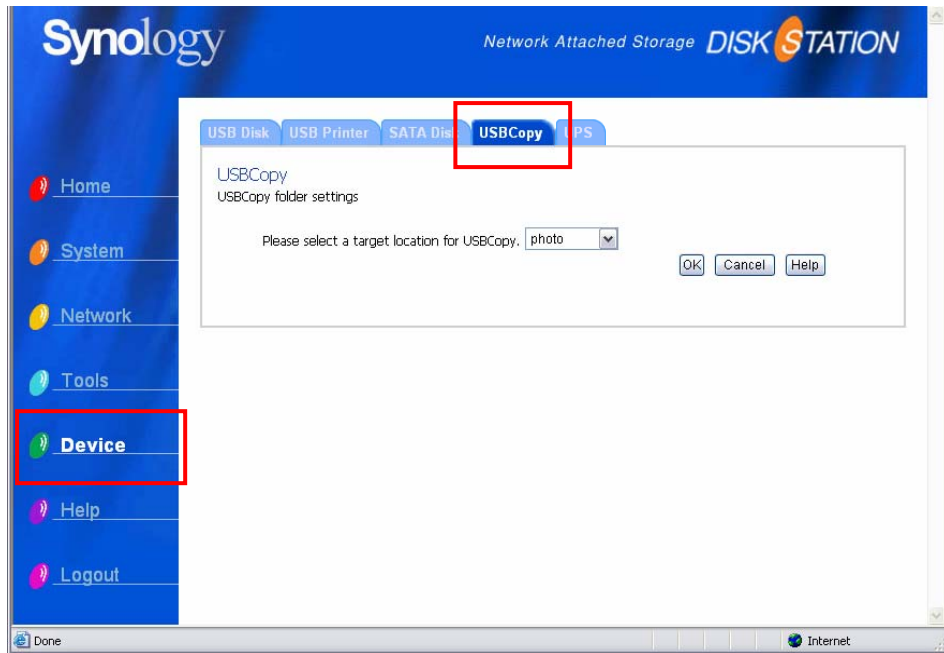


USBCopy

When a USB Device is connected to the USB port at the front panel, by pressing the “COPY” button all the data in the USB Device will be copied to Synology Server’s internal HDD.

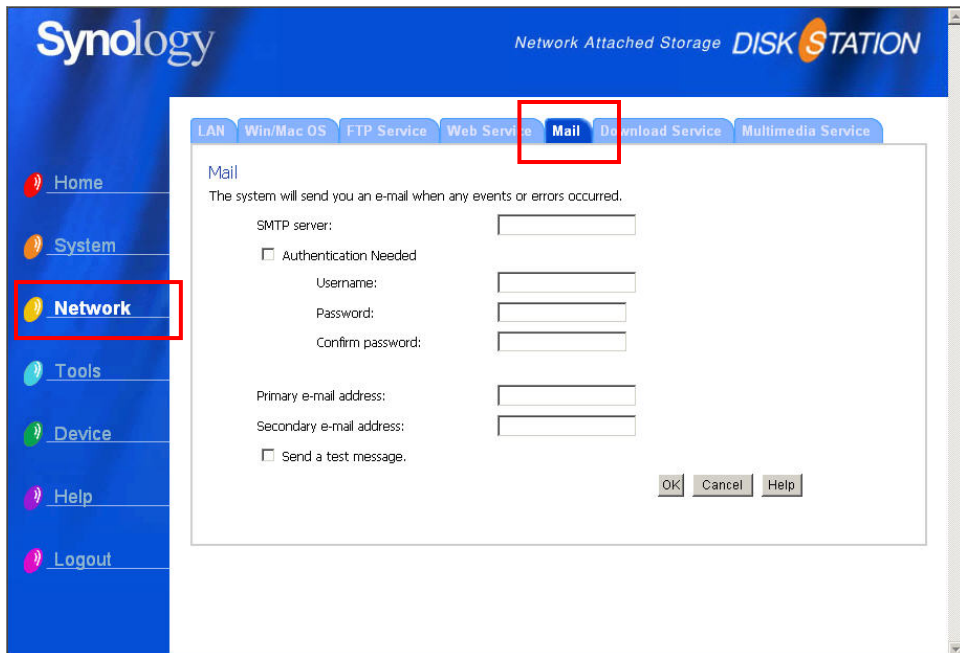
Setting USBCopy Target Location

You can setup USBCopy target location on the “Device > USBCopy” page of the Web Management UI. When pressing the “Copy” button from now on, data will be copied to the target location.



Mail Notification

Administrator can enter email address on the page “Network > Mail”. Synology Server will send email to the address whenever an important event occurs to notify Administrator.



Firmware Update

To keep your Synology Server up to date, Administrator can go to “Tools > Update” page to upgrade firmware.

Wizard | Restore Default | **Update** | Local Backup | Network Backup

Home
System
Network
Tools
Device
Help
Logout

Firmware Update

There may be new firmware with improved functions and performances.
[You can check our web site for any available firmware updates.](#)

To update the firmware, please select the upgrade file from the local drive and click the OK button below to start the update.

Model Name:	DS-106
Current Firmware Version:	2.0.1 - 3.0338
Firmware Date:	2006/04/10

Expanding HDD Capacity

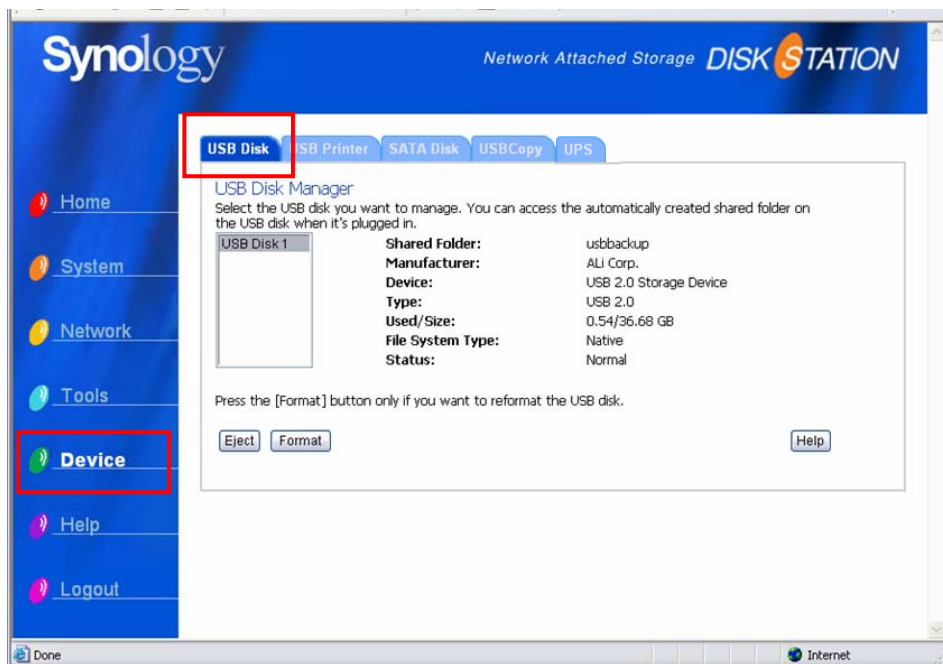
Administrator can expand HDD capacity by connecting external HDD, or replacing a larger capacity internal HDD.

External HDD

External USB HDD

When connecting an external USB HDD to Synology Server's USB port, "usbshare1" shared folder will be created automatically. Upon disconnecting external USB HDD, the shared folder will be removed. For more than 1 external USB HDD is connected, "usbshare2", "usbshare3" will be created accordingly.

To Eject or Format external USB HDD, go to the page "Device > USB Disk" of the Web Management UI.



External SATA HDD

When connecting an external SATA HDD to Synology Server's eSATA port, "satashare" shared folder will be created automatically. Upon disconnecting External SATA HDD, shared folder will be removed.

To Eject or Format external SATA HDD, go to the page "Device > SATA Disk" of the Web Management UI.

Replacing Larger Internal HDD

When the internal HDD storage is run out, Administrator can follow the steps to replace a larger HDD and keep using the original data:

1. Replace the original internal HDD with a larger one.
2. Connect the original HDD to the USB port or eSATA port.
3. Copy the data from the original HDD to the new HDD
4. Remove the original HDD.

Troubleshooting

For any questions about managing your Synology Server, please refer to the “Help” button at every page of the Web Management UI. For any questions other than that, please visit Synology Inc. website (www.synology.com) for further assistant.

Appendix

Recommended Peripherals

Recommended SATA HDD

Brand	Model	Capacity
Seagate	ST3120026AS	120G
Seagate	ST3300831AS	300G
Seagate	ST3500641AS	500G
Seagate	ST3400832AS	400G
Hitachi	HDS725050KLA360	500G
Hitachi	HDS722525VLSA80	250G
Maxtor	6H400F0	400G
Maxtor	6H500F0	500G
Maxtor	6V250F0	250G
Maxtor	6V300F0	300G
Maxtor	7H500R0	500G
Maxtor	7V250F0	250G
Maxtor	7V300F0	300G
Maxtor	6V200E0	200G
Maxtor	6L250S0	250G
Samsung	SP2504C	250G
Western Digital	WD1200JD	120G
Western Digital	WD1600JD	160G
Western Digital	WD2500JD	250G
Western Digital	WD5000KS	500G

Recommended USB Printer

(Unless specified, this table is based on Windows platform)

Brand	Model	Remark
EPSON	CC-600PX	Printer function only.
	E-100	Printer function only.
	LP-1500C	

Brand	Model	Remark
	LP-2500	
	LP-6100	
	LP-8800C	
	LP-9100	
	LP-9100PS3	
	PM-3700C	
	PM-4000PX	
	PM-760C	
	PM-970C	
	PM-D750	Printer function only.
	PM-G700	
	PM-G800	
	PX-G900	
	PX-V500	
	PX-V600	
hp	DESKJET5160	
	DESKJET5650	
	DESKJET5850	
	LaserJet 2300n	Also supports Mac
	OFFICEJET5510	
	OFFICEJET6150	
	PSC1350	
	PSC2450	
	PSC2550	
	Photosmart 1100c	Also supports Mac
Canon	i320	
	PIXMA iP 1500	
	PIXMA iP 3000	
Brother	HL-2070	
	HL-5150D	
	QL-500	
	DCP-110C	No scanner support
	MFC-8840D	No scanner/ fax support

Recommended UPS

Brand	Model	Remark
APC	Back-UPS Series	USB

Recommended NTP Server

The main purpose of Network Time Protocol (NTP) is for synchronizing clocks of computer system over data network. We have provided a few recommended NTP servers. For more information about NTP Server, please visit <http://www.eecis.udel.edu/~mills/ntp/servers.html>

Below are few recommended NTP server:

1. time.apple.com
2. time.asia.apple.com
3. time.euro.apple.com
4. time.nist.gov
5. time.windows.com

For more information, please refer to:
<http://ntp.isc.org/bin/view/Servers/WebHome>