

# **Securelock** *AES-256* **User Manual**

**Support OS:**

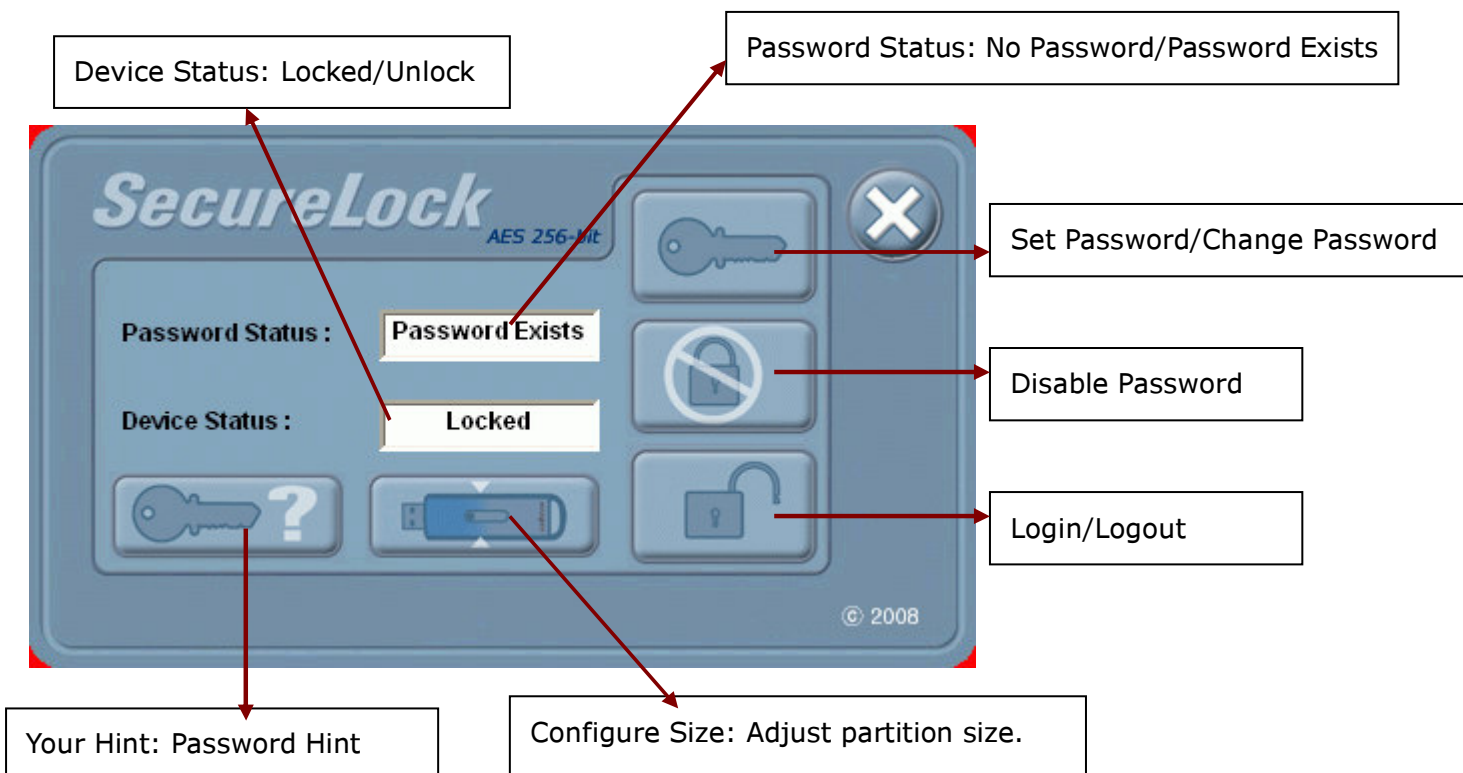
Windows 2000 above SP3

Windows XP

Windows Vista

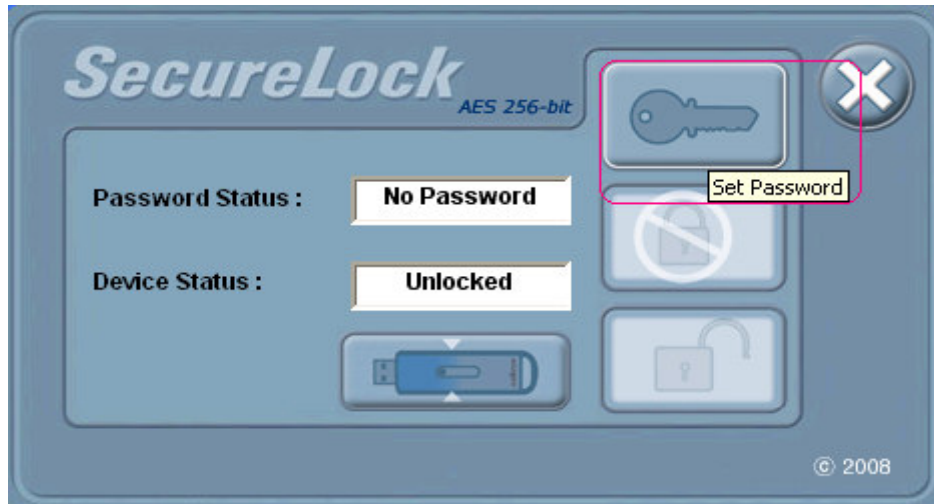
**SecureLock** AP provides user to manage the USB flash disk; set password to protect the secure partition, adjust partition size...

**SecureLock Tool Function:**



## Set Password

1. Execute SecureLock tool and click "Set Password"



2. Please enter your password and your hint in password setup dialog.

### Note:

Show Password: Un-encrypt the entered password and hit characters.

3. Click "V" to apply the password setting.

4. Securelock tool will partition the disk to 2 partitions when password set in first time use. And the data in the device will be all deleted. Please backup the data first when setting the password. After setting, please re-plug the device.



5. There will be 2 partitions, one is public area with Securelock tool and one is locked for secure area.

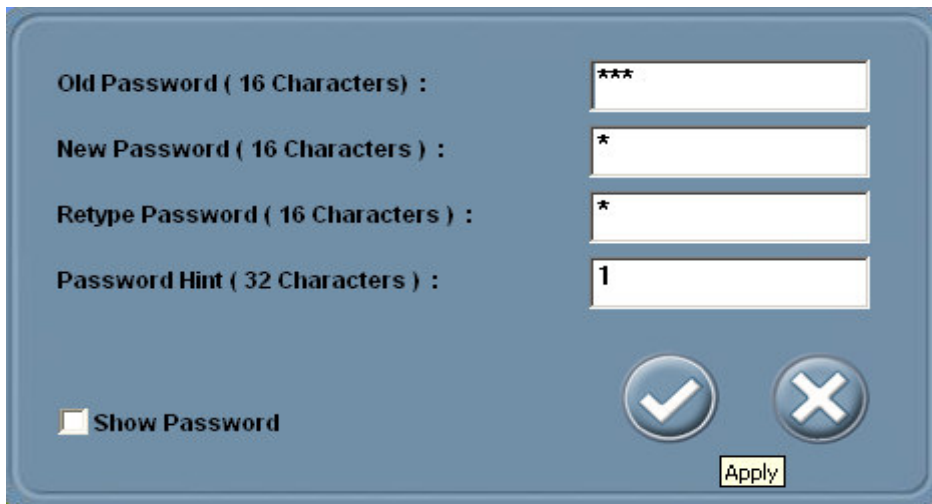


## Change Password

1. Click the change password button



2. Enter the old password and your new password, hit.



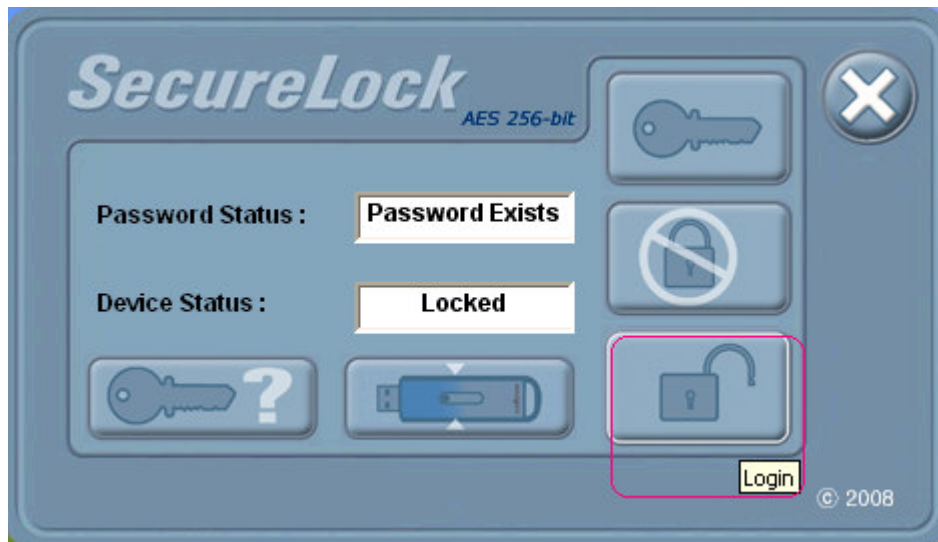
The image shows the password change form. It includes four input fields: 'Old Password ( 16 Characters )' with three asterisks, 'New Password ( 16 Characters )' with one asterisk, 'Retype Password ( 16 Characters )' with one asterisk, and 'Password Hint ( 32 Characters )' with the number '1'. There is a 'Show Password' checkbox, a checkmark button, an 'X' button, and an 'Apply' button.

3. Click "V" to change the password. After changing, please use the new password when next time logging in the disk.



## Login

1. When the password exists, the secure area is locked and can't be read. Please use "Login" function to unlock the disk.



2. Enter your password and then click "V" button



3. If logging in, the secure area will be readable and writeable



## Logout

1. Please click "Logout" button to lock the secure area immediately.



2. After logging out, the secure area will be locked, can't be accessed.





## Disable Password

1. Click "Disable Password" button to clean the password.



2. Enter your password, and then click "V".



3. If the password is cleaned, all partitions are public to read/write. .

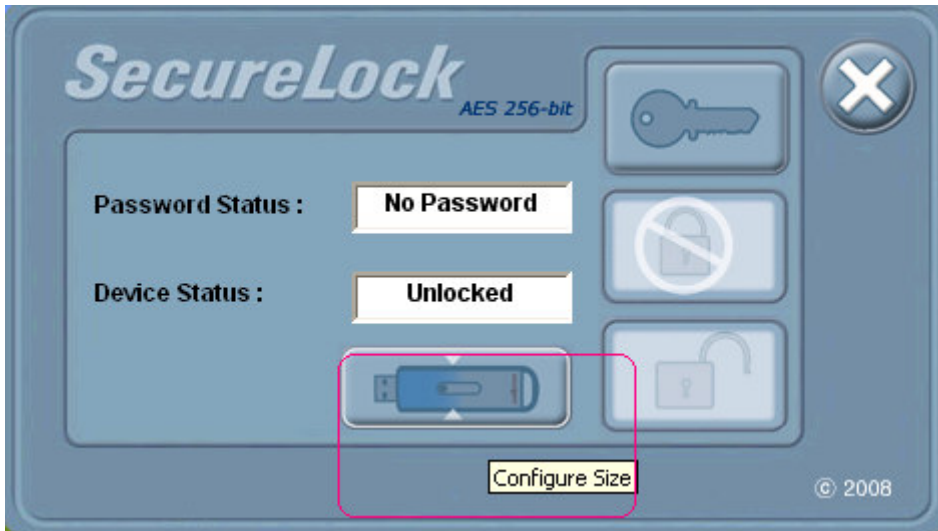
## Password Hint

1. If you forget the password, you can click the password hint to remind the password.

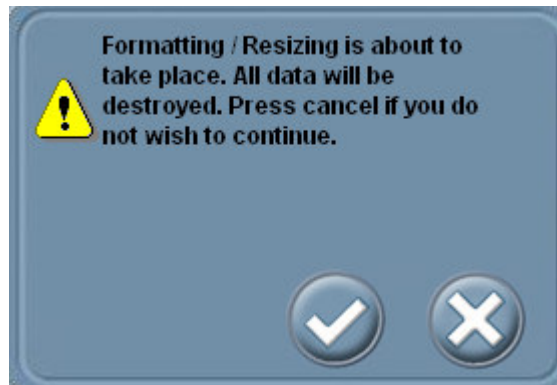


### Configure Size

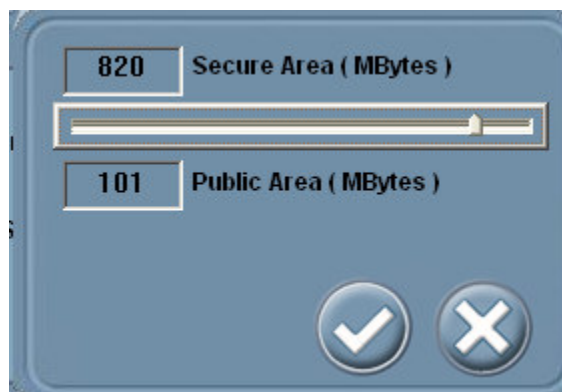
1. Please click the Configure Size button to adjust the partition size. Before adjusting the disk size, please clean the password firstly.



2. Adjusting the partition size will erase the data in the disk. Please backup your data first.



3. Adjust the score bar to set each partition size and then click the "V".



4. After partition, please re-plug your device.