

# **PARTS MANUAL**

**Model**

**SGX5000 - 50 State  
GENERATORS**

PUB-EP  
Rev. 03/12



**SUBARU**

**Industrial Power Products**

Robin America, Inc.

905 Telsler Road • Lake Zurich, IL 60047 • Phone: 847-540-7300 • Fax: 847-438-5012  
e-mail: [sales@subarupower.com](mailto:sales@subarupower.com) • [www.subarupower.com](http://www.subarupower.com)

© Copyright 2012 Robin America, Inc.

# GROUP INDEX

<b>Group Name</b>	<b>Page</b>
CRANKCASE GROUP .....	4
CRANKSHAFT GROUP .....	8
INTAKE and EXHAUST GROUP .....	10
GOVERNOR GROUP .....	14
COOLING and STARTING GROUP .....	16
FUEL, LUBRICATION GROUP .....	18
ELECTRIC.....	22

FIG. 1 CRANKCASE GROUP

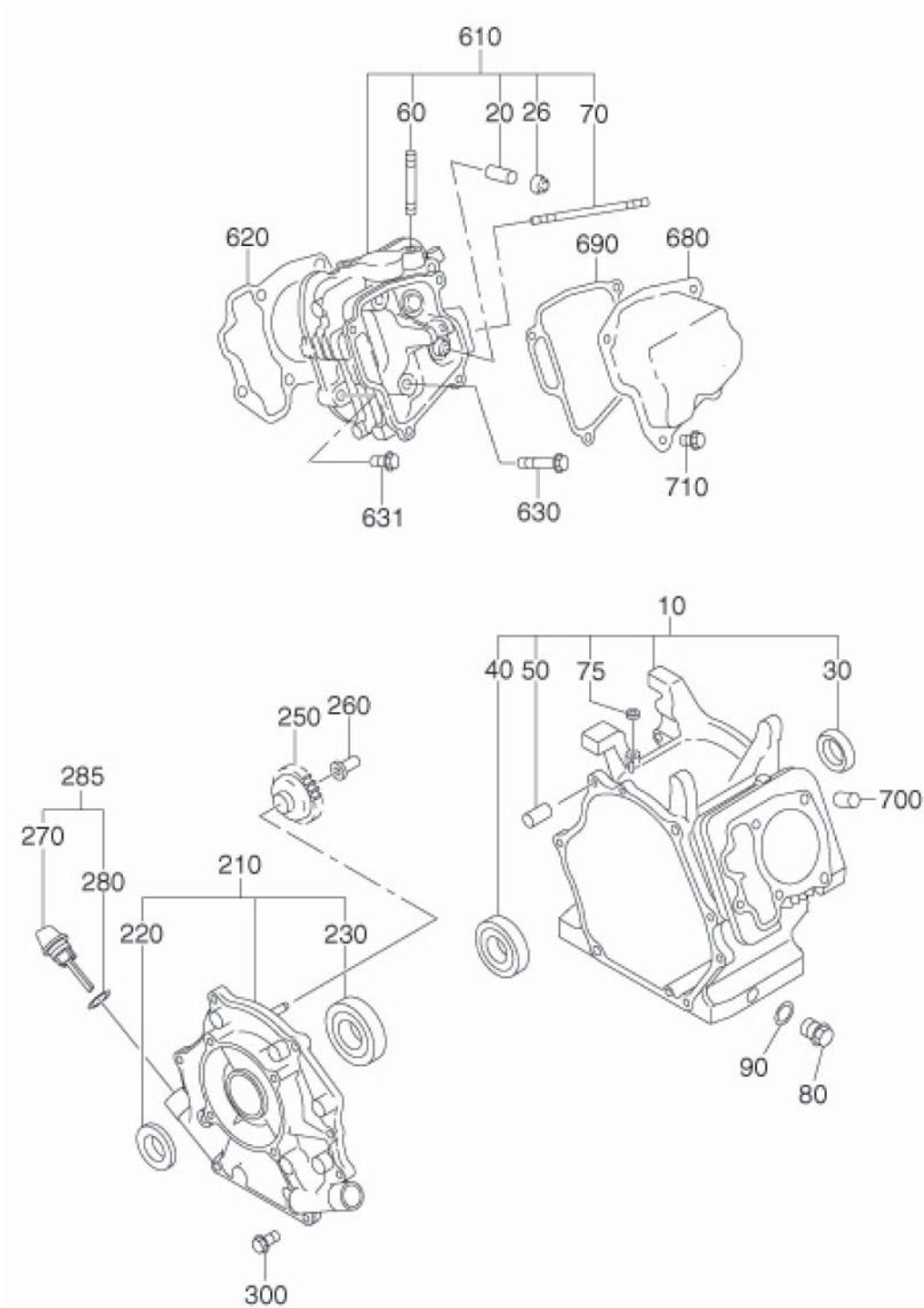




FIG. 2 CRANKSHAFT GROUP

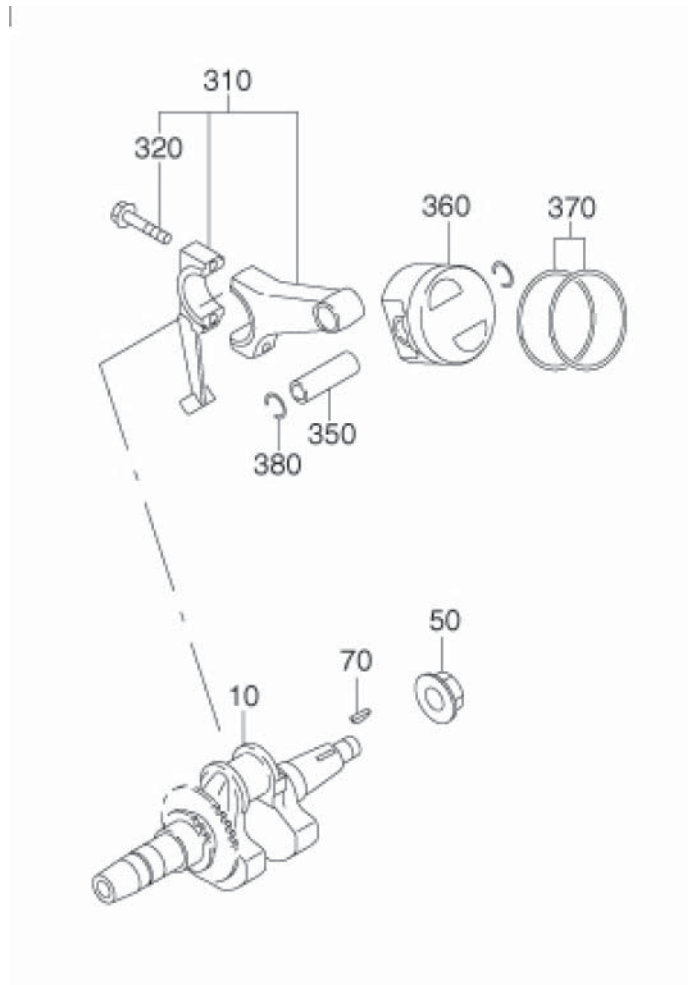
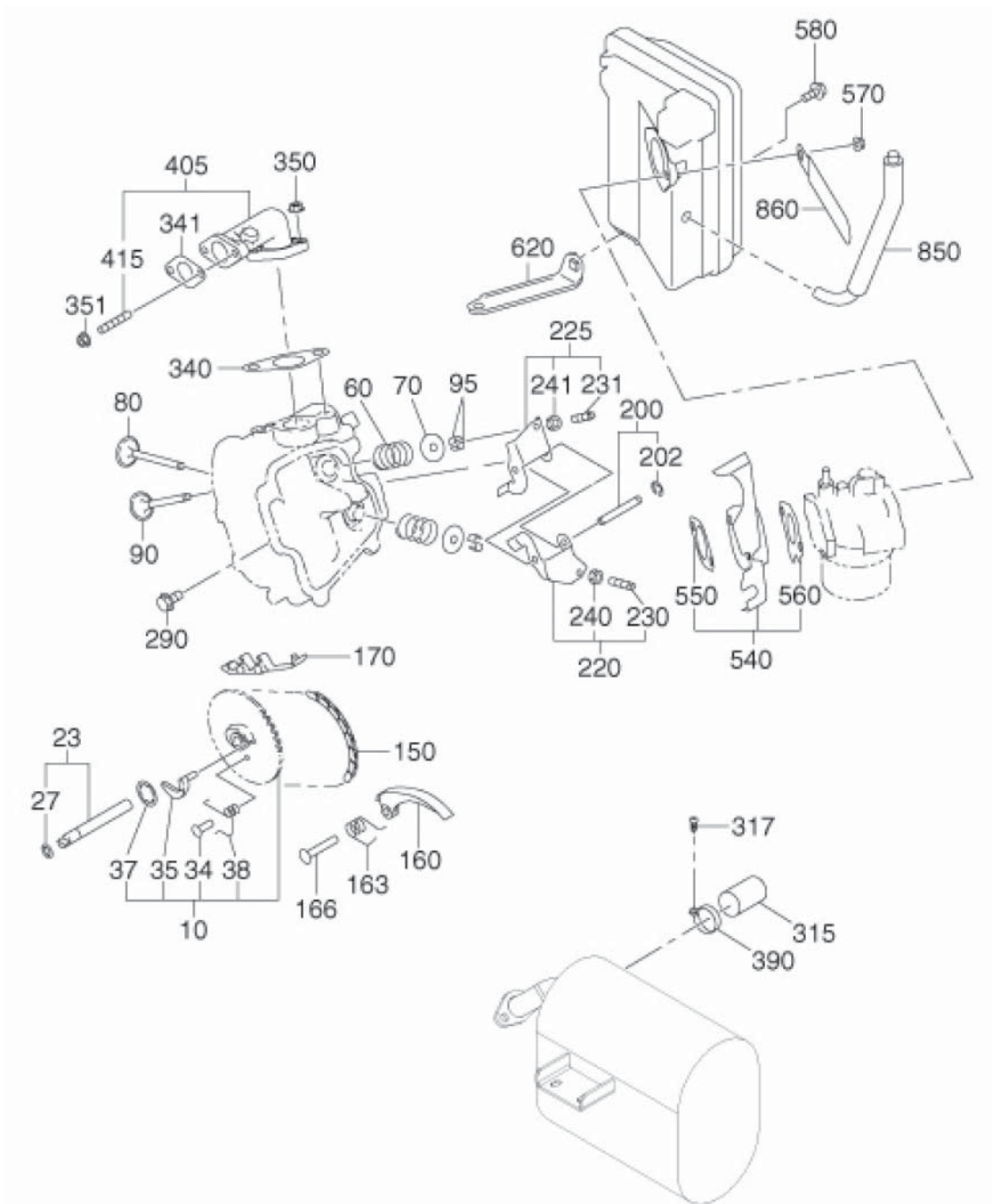




FIG. 3 INTAKE and EXHAUST GROUP

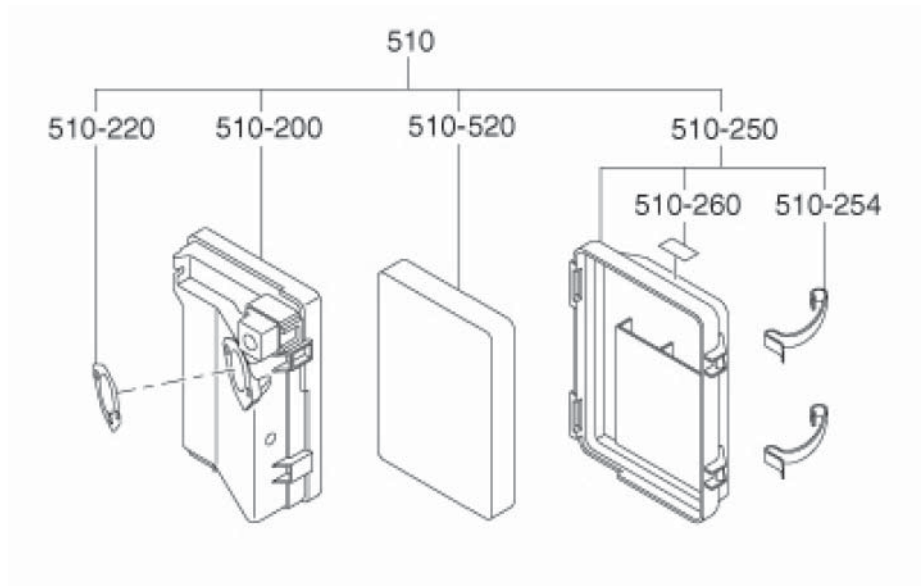




**FIG. 3 INTAKE and EXHAUST GROUP**

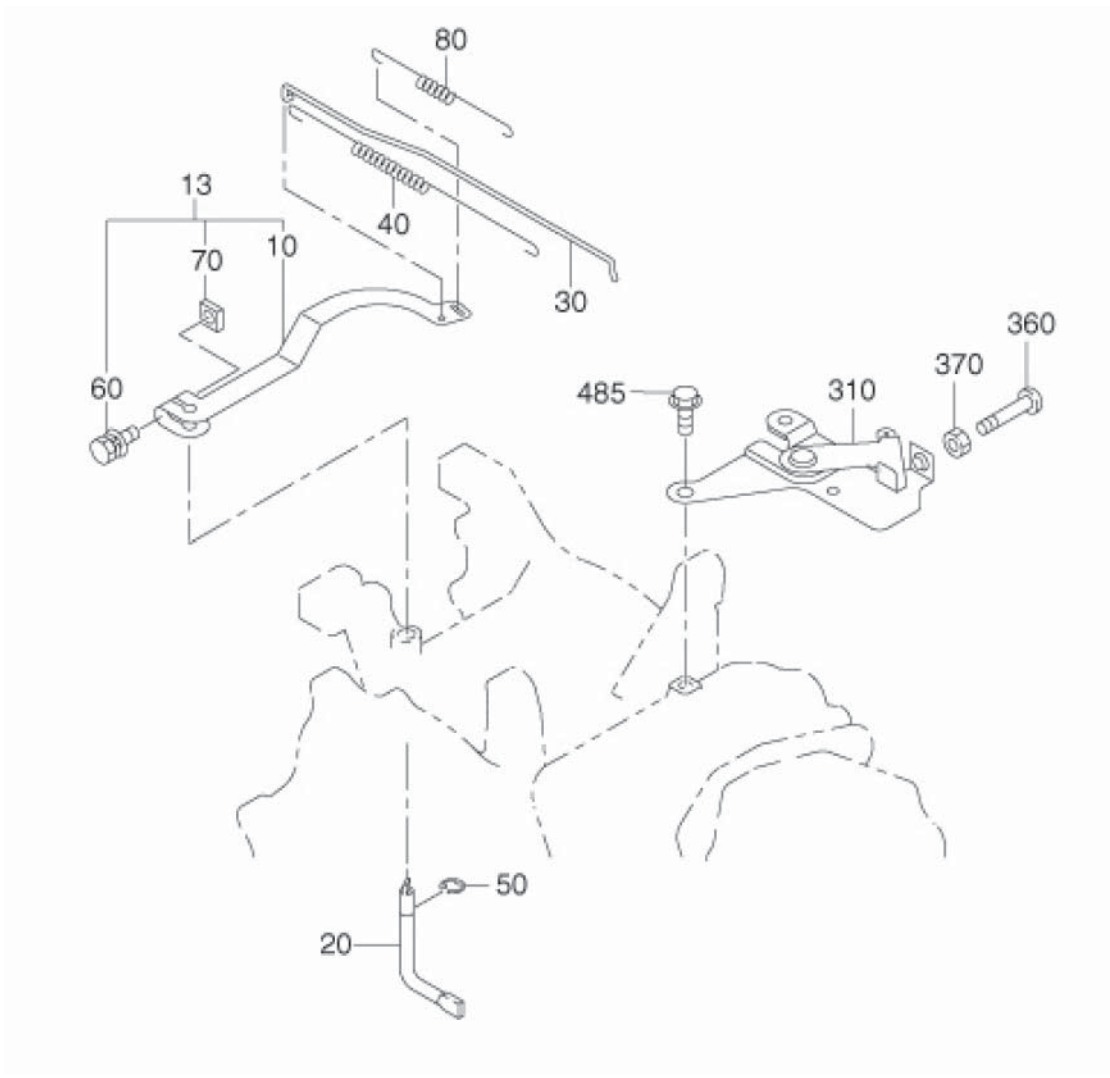
Ref.	Part Number	Description	Qty	Remarks	To-From	Fig.
10	279-31602-31	CAM SHAFT CP	1		9098-	301
	279-31602-21	CAM SHAFT CP	1		-9097	301
23	277-35101-01	PIN(CAM SHAFT)CP	1		-	301
27	024-00600-30	O RING	1	5.8DX9.6D	-	301
34	277-38601-03	PIN(SPRING)	1	4DX8DX9L	-	301
35	279-36401-13	RELEASE LEVER	1		9098-	301
	279-36401-03	RELEASE LEVER	1		-9097	301
37	277-36501-03	CLIP	1	13.8DX20.3DX0.4T	-	301
38	277-38703-13	RETURN SPRING	1		9098-	301
	277-38703-03	RETURN SPRING	1		-9097	301
60	279-33601-03	VALVE SPRING	2	19.2DX2.3DX27.4L	-	301
70	269-33701-03	SPRING RETAINER	2		-	301
80	279-33401-H3	INTAKE VALVE	1	28.5DX5.5DX67.8L	-	301
90	279-33501-H3	EXHAUST VALVE	1	26.5DX5.5DX67.8L	-	301
95	132-10KA0-31	COLLET-VALVE	4		-	301
150	279-35602-H1	TIMING CHAIN CP	1	100 LINK	-	301
160	277-36911-03	TENTIONER	1		-	301
163	277-37101-03	SPRING(TENTIONER)	1	10DX1.8DX14L N=4.5	-	301
166	277-36902-03	PIN(TENTIONER)	1	6DX13DX34L	-	301
170	277-36913-13	CHAIN GUIDE	1		-	301
200	277-35004-01	PIN(ROCKER) CP	1		-	301
202	003-13050-00	CLIP	1	5DX11DX0.6T	-	301
220	277-36201-00	ROCKER ARM(IN) AY	1		-	301
225	277-36202-00	ROCKER ARM(EX) AY	1		-	301
230	014-90500-20	ADJUST SCREW	1	M5X0.5X23L	-	301
231	014-90500-20	ADJUST SCREW	1	M5X0.5X23L	-	301
240	017-00500-30	NUT	1	M5X0.5X4.1H	-	301
241	017-00500-30	NUT	1	M5X0.5X4.1H	-	301
290	011-00600-10	FLANGE BOLT	1	M6X1.0X14DX8L	-	301
340	277-35201-13	GASKET(MUFFLER)	1	T=0.2 26D 9DX58P	-	301
341	270-35201-01	GASKET CP (MUFFLER)	1	T=0.4 30D 8.5DX52P	-	301
350	002-38080-00	FLANGE NUT	2	M8X1.25X17DX7.5H	-	301
351	002-38080-00	FLANGE NUT	2	M8X1.25X17DX7.5H	-	301
405	277-34001-01	EXHAUST PIPE CP	1		-	301
415	010-50802-90	STUD	2	M8X1.25X30L	-	301
540	279-32902-J1	INSULATOR CP	1	W/GASKET	-	301
550	279-35903-J3	GASKET2(INSULATOR)	1	T=0.5	-	301
560	279-35902-J3	GASKET1(INSULATOR)	1	T=0.5	-	301
570	002-38060-00	FLANGE NUT	2	M6X1.0X13DX6H	-	301
580	001-04062-00	FLANGE BOLT	1	M6X1.0X13DX20L	-	301
620	279-39001-01	BRACKET(A/C) CP	1		-	301
850	291-66001-H0	RUBBER PIPE AY	1		-	301
860	056-60002-50	CLAMP	1	6.5DX10BX95LX0.6T	-	301

**FIG. 3 INTAKE and EXHAUST GROUP**



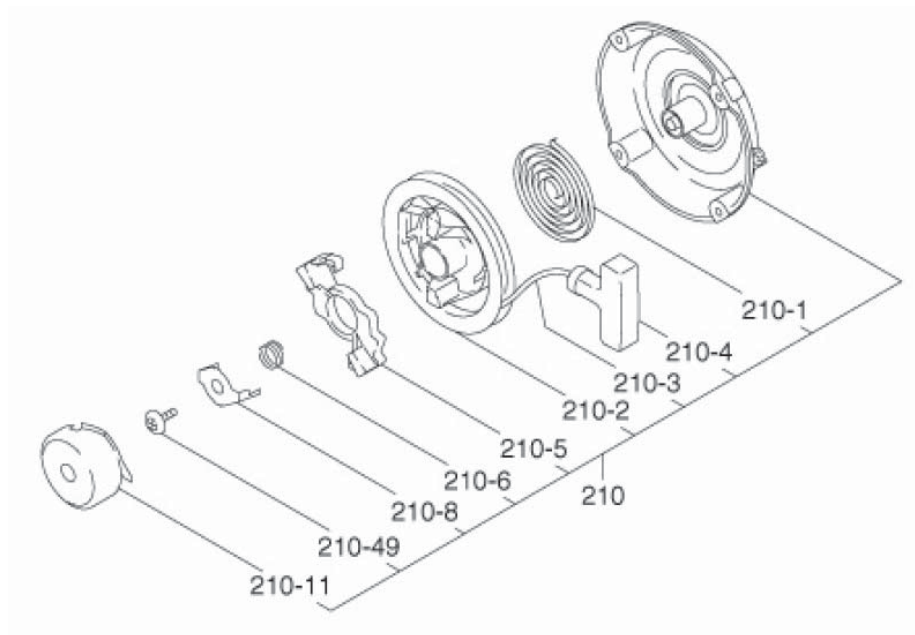
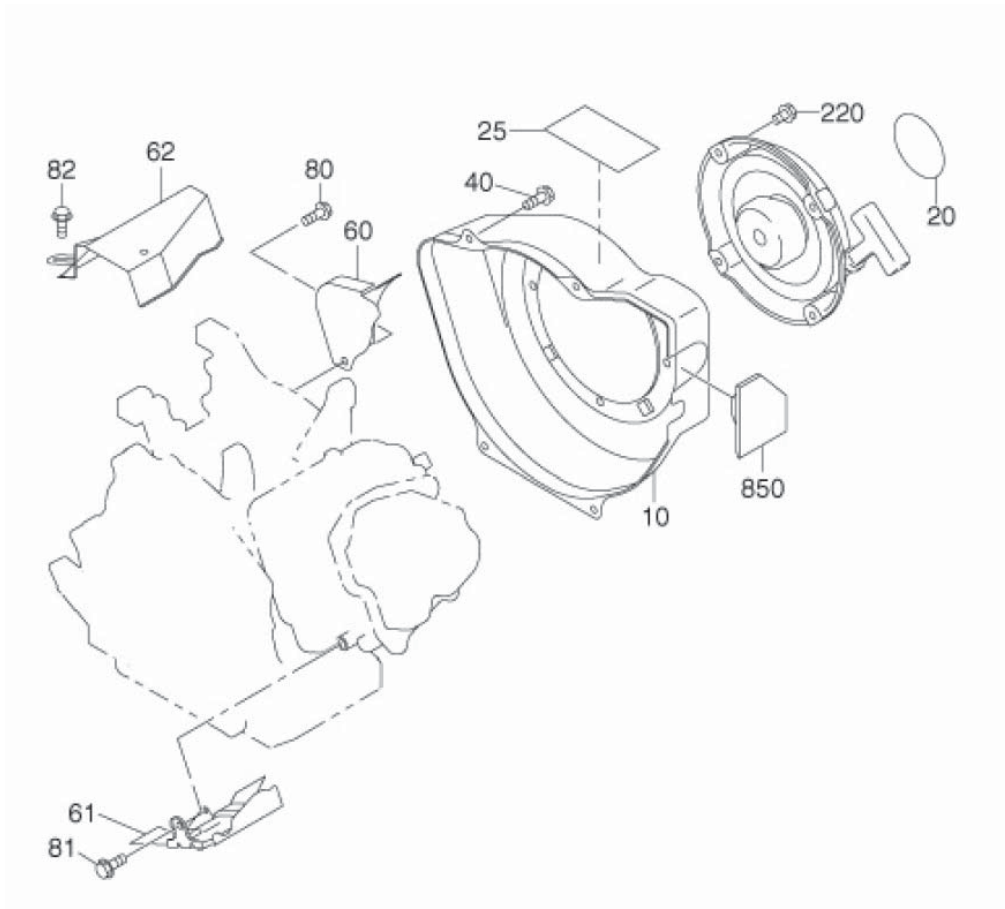


**FIG. 4 GOVERNOR GROUP**



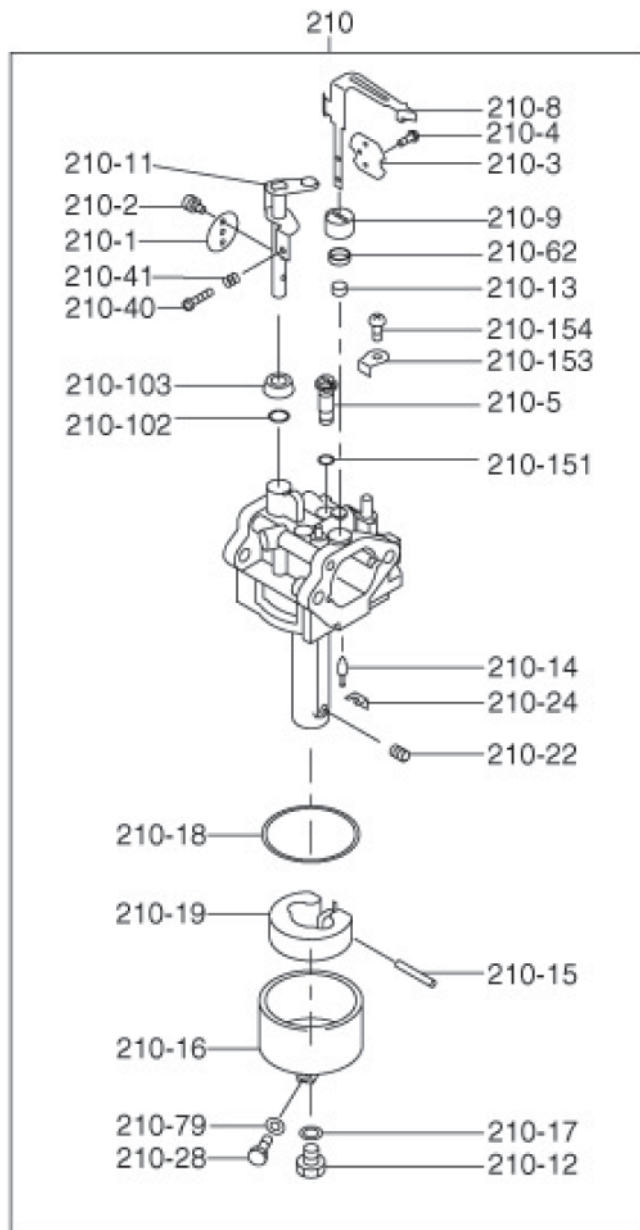


**FIG. 5 COOLING and STARTING GROUP**





**FIG. 6 FUEL LUBRICANT GROUP**







**FIG. 7 ELECTRIC GROUP**

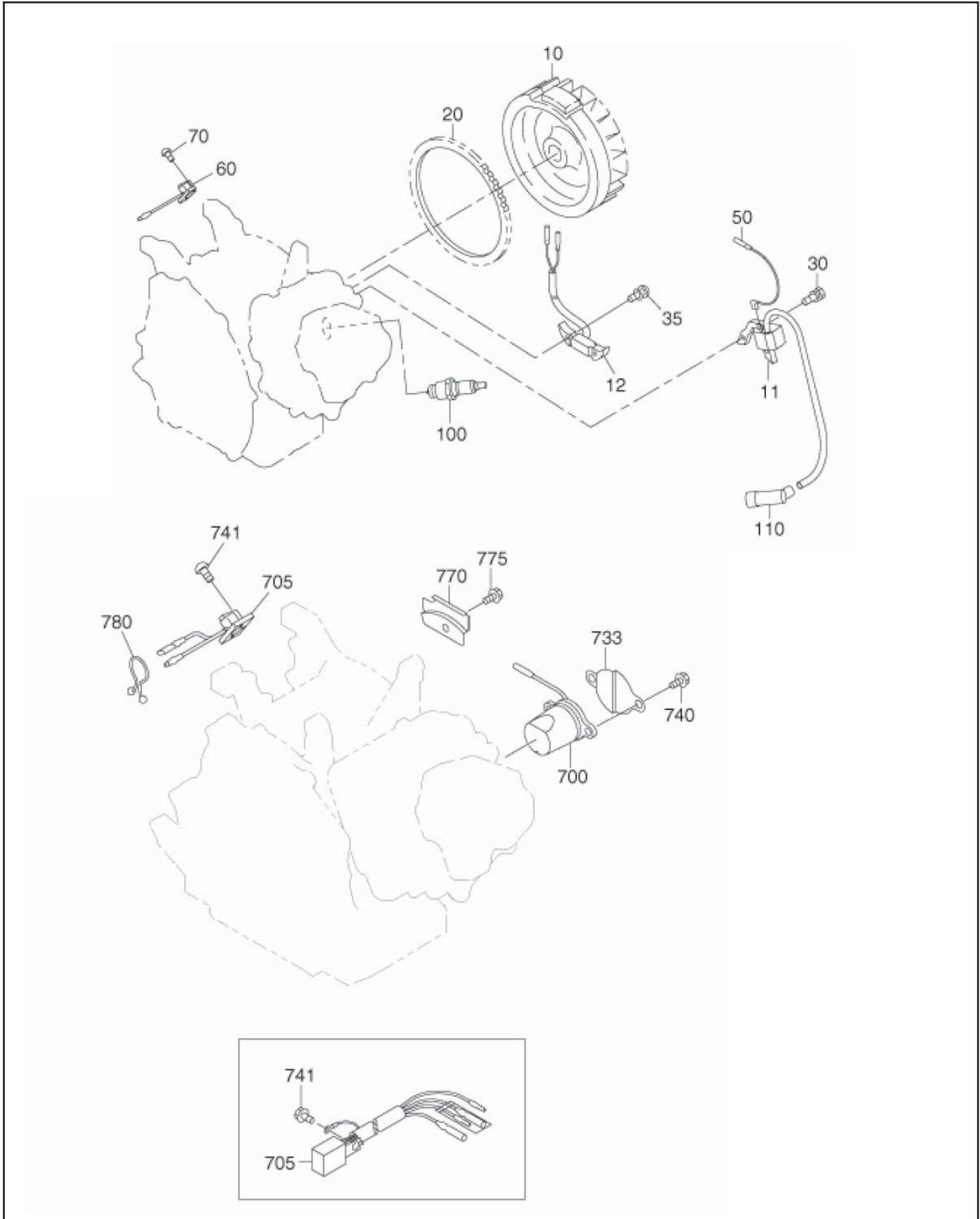




FIG. 22 GROUP

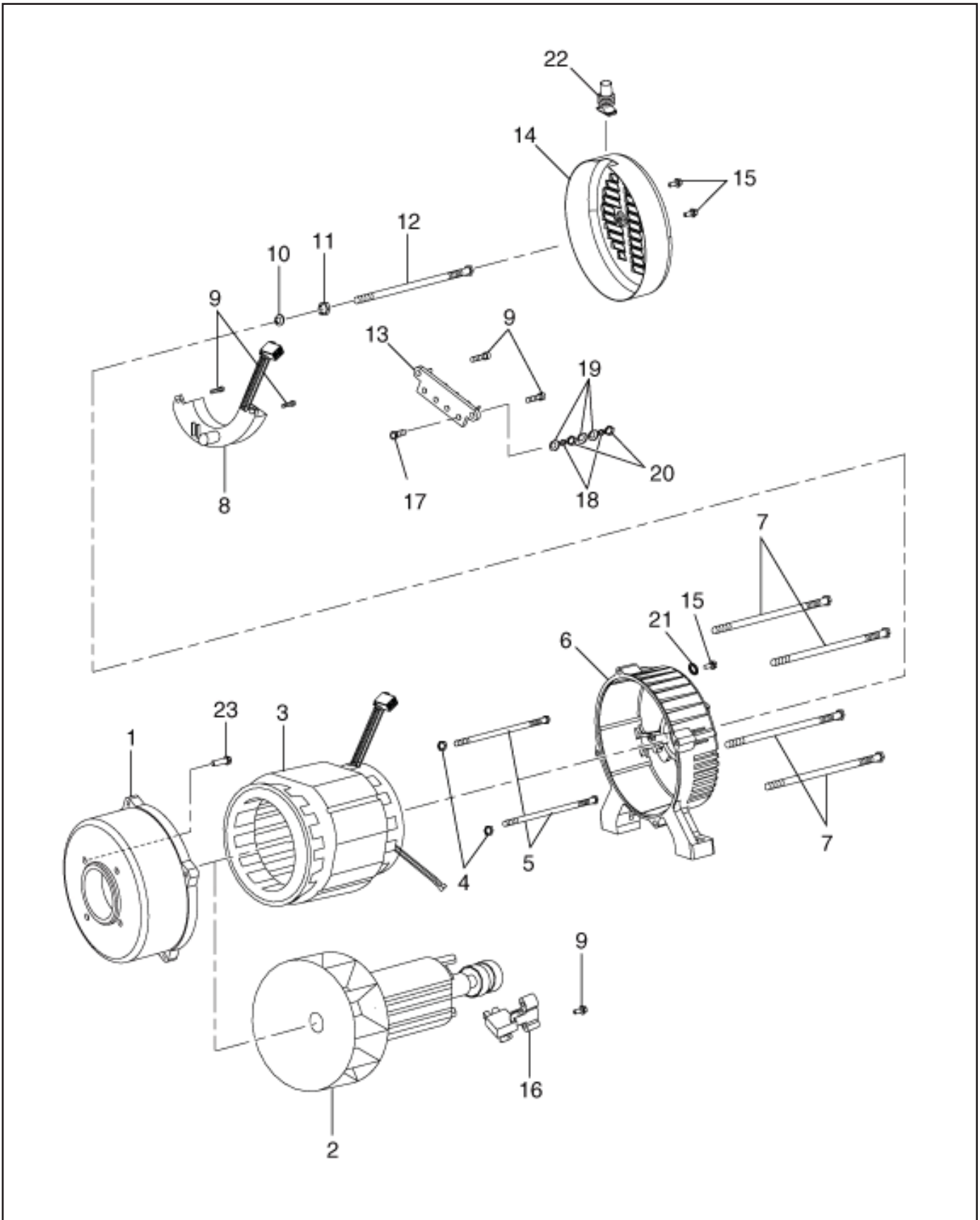




FIG. 23 GROUP

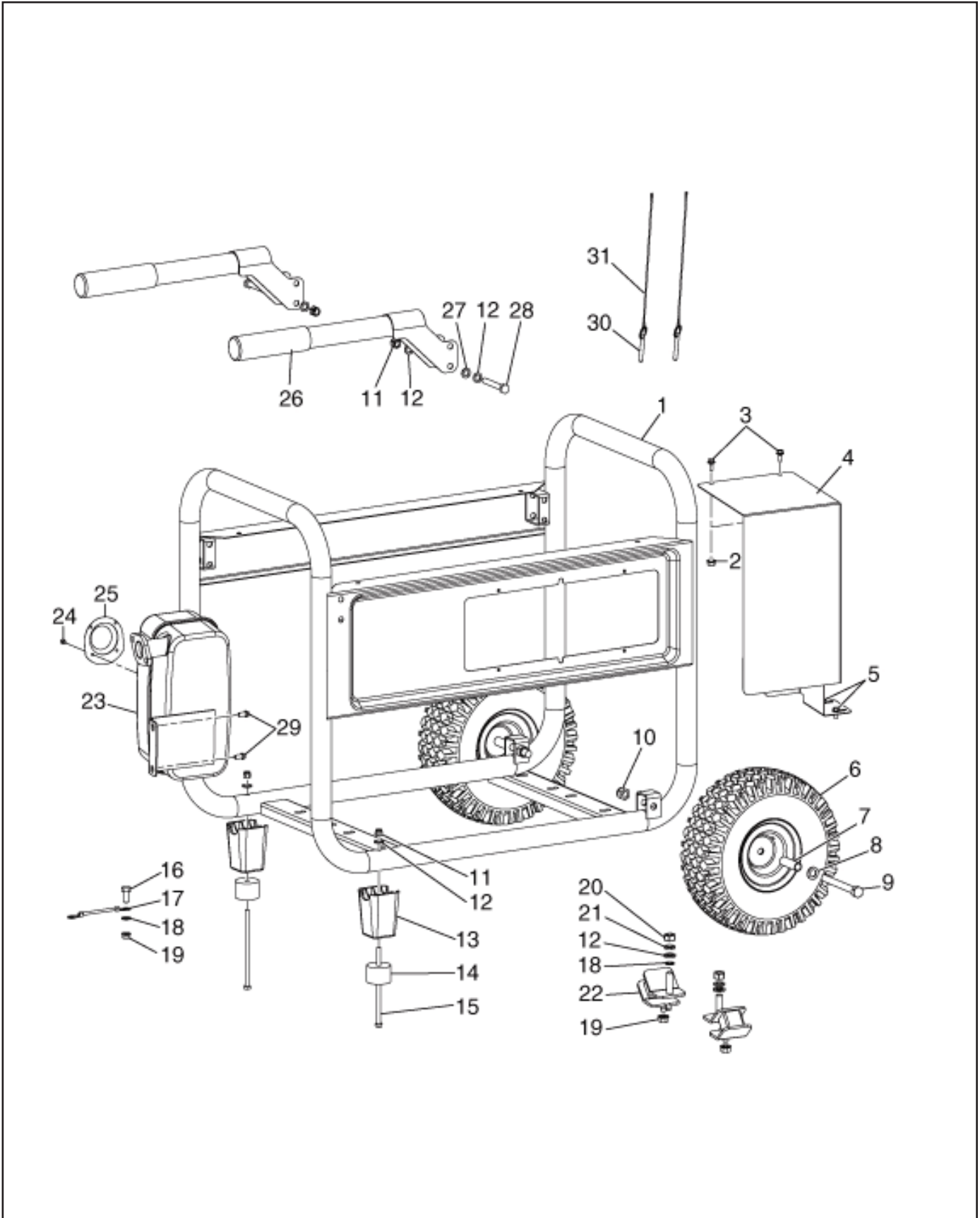




FIG. 24 GROUP

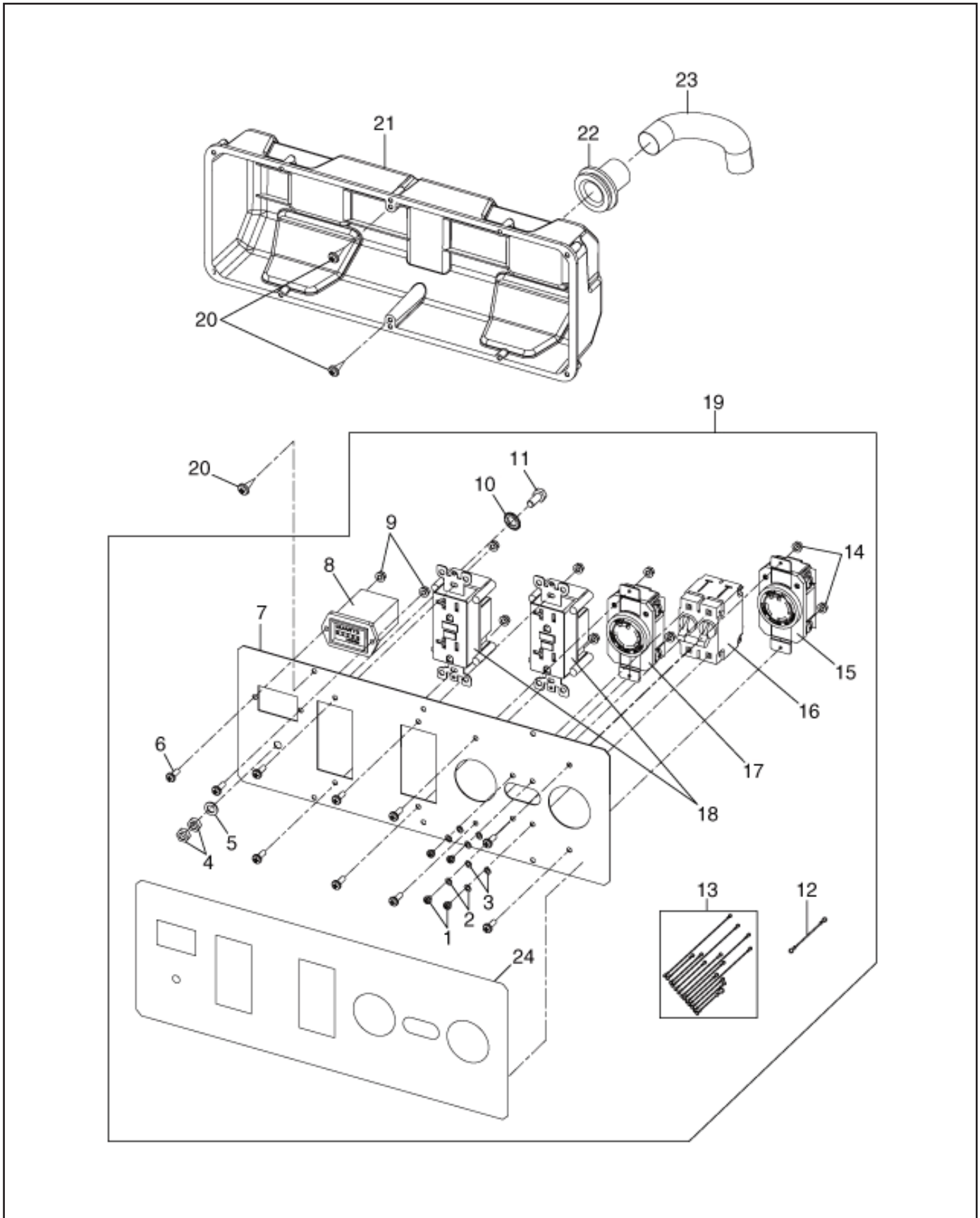






FIG. 26 GROUP

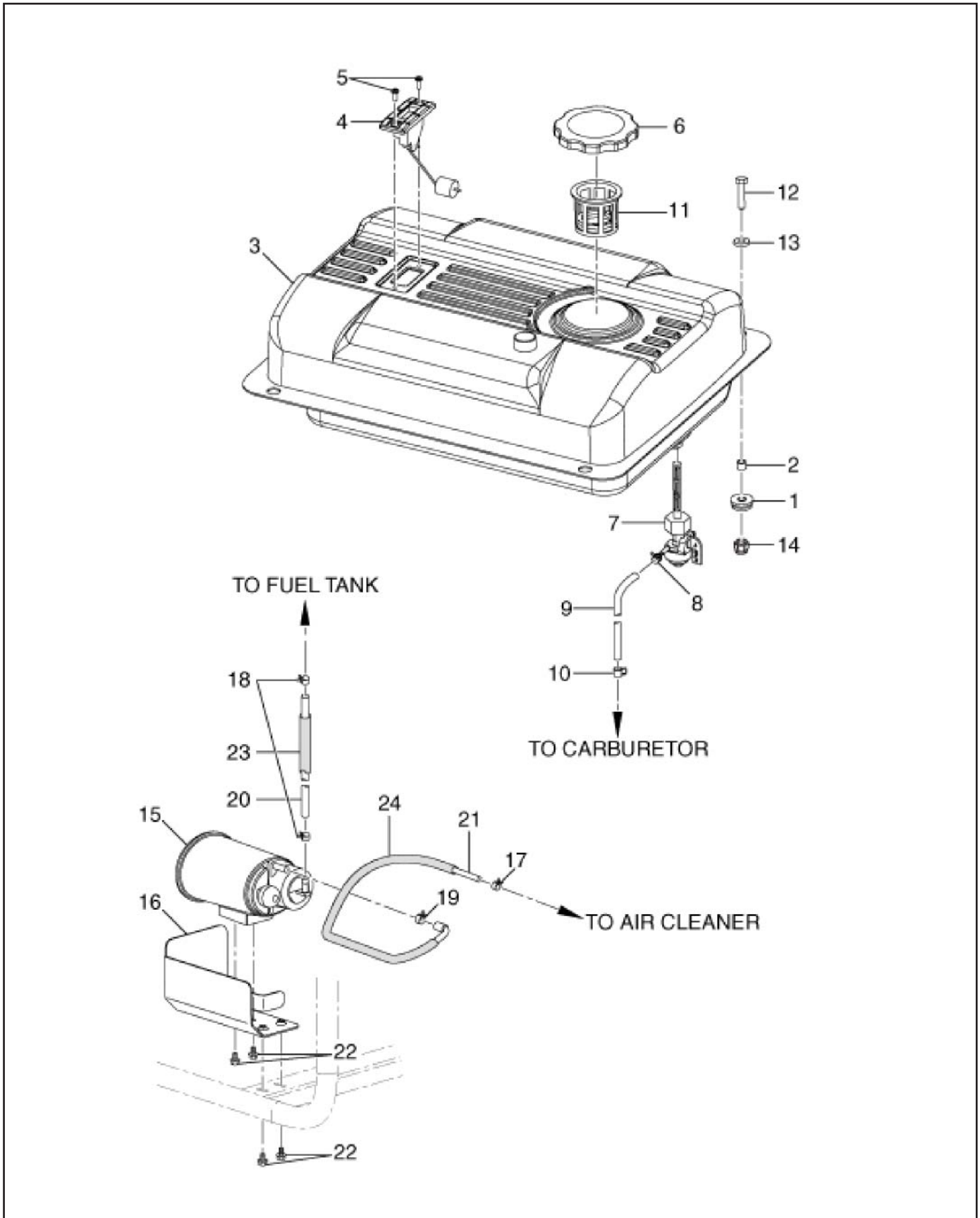
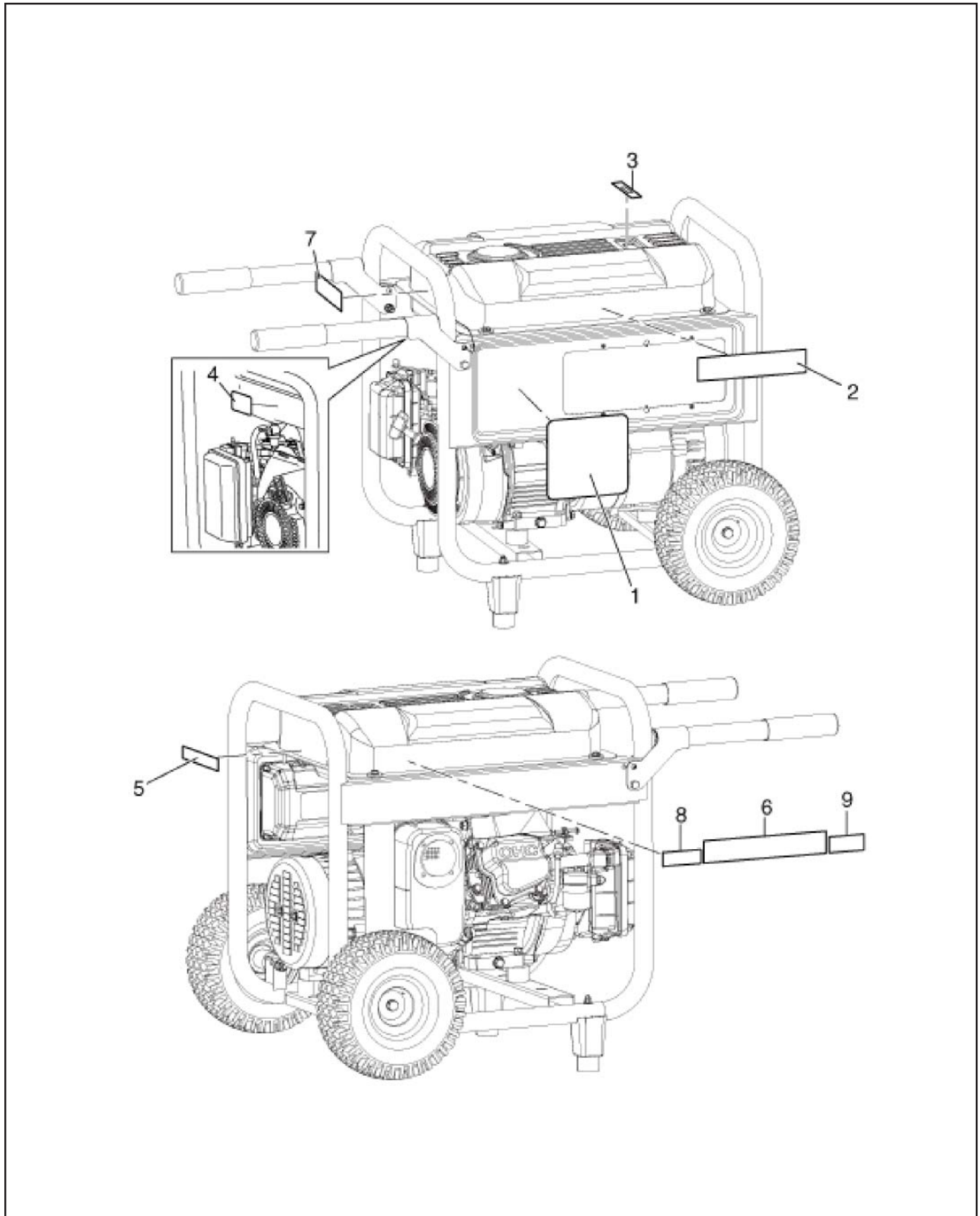




FIG. 29 GROUP





PRINTED IN THE USA

## Robin America, Inc

905 Telsler Road • Lake Zurich, IL 60047  
Phone: 847-540-7300 • Fax: 847-438-5012  
e-mail: [sales@subarupower.com](mailto:sales@subarupower.com) • [www.subarupower.com](http://www.subarupower.com)