

FF520

INSTALLATION and OPERATION GUIDE



This guide relates to the following GPS CHART PLOTTERS:
CP180, CP180i, CP300, CP300i, CPV350, CP500 and CPV550.

For older GPS Chart Plotters, the manual is available for download at www.standardhorizon.com or by contacting Marine Product Support at 800-767-2450.



FCC Compliance Statement

This device complies with Part 15 of the FCC limits for Class A digital devices. This equipment generates, uses, and can radiate radio frequency energy and, if not installed or used in accordance with the instructions may cause harmful interference with radio communications.

There is no guarantee that interference will not occur in a particular instance. If this equipment does cause harmful interference to other equipment, try to correct the problem by relocating the equipment.

Consult an authorized STANDARD HORIZON dealer or other qualified service technician if the problem cannot be corrected. Operation is subject to the following conditions: (1) This device cannot cause harmful interference, and (2) this device must accept any interference received, including interference that may cause undesired operation.

CAUTION

- The FF520 is designed for maritime use.
 - The FF520 contains dangerous high voltage circuits which only experienced technicians can handle.
 - STANDARD HORIZON will not be liable for errors contained herein, or for incidental or consequential damages in connection with the performance or use of this material.
-

WARNING

- When plugging in or unplugging a transducer to the FF520 make sure power is turned off.
-

Copyright 2007. **STANDARD HORIZON** All rights reserved. *Printed in Italy.*
No part of this publication may be reproduced or distributed in any form or by any means, or stored in a database or retrieval system, without prior written permission of the publisher.

CODE: Issue I - 151007e

TABLE OF CONTENTS

1. INTRODUCTION	7
1.0 GENERAL INFORMATION	7
1.1 PACKING LIST	8
1.1.0 Replacement Part	8
2. MOUNTING THE FF520	9
2.0 INSTALLATION	9
2.1 CONNECTIONS	9
2.2 POWER CONNECTIONS	10
2.3 GPS CHART PLOTTER CONNECTIONS	10
2.4 TEE Cable	10
2.4.0 CP180 and CP180i	12
2.4.1 CP300 and CP300i	12
2.4.2 CPV350	13
2.4.3 CP500	13
2.4.4 CPV550	14
2.5 SOFTWARE SETUP	14
2.6 OPTIONAL CONNECTIONS	14
2.6.0 NMEA Output	15
2.6.1 Alarm Buzzer	15
2.6.2 Temperature Sensor	15
3. TRANSDUCER	17
3.0 TRANSDUCER MOUNTING	17
3.0.0 Power Boats	17
3.0.1 Sailboats	17
3.0.2 Transducer Types	17
3.0.3 Low Profile Thru-Hull	18
3.0.4 Transom (power boats only)	18
3.0.5 Fairing Block	18
3.0.6 In-hull	18
3.0.7 Optional Transducer ID Sensors	18
3.0.8 Fish Finder Basics	19
4. OPERATION	21
4.0 UNDERSTANDING THE FISH FINDER PAGE	21
4.1 UNDERSTANDING THE FISH FINDER DISPLAY	22
4.2 DISPLAYING THE FISH FINDER PAGE	23
4.2.1 Customizing the Fish Finder menu selection	24
4.3 SOFT KEY OPERATION (EXCEPT CP180/CP180i)	24
4.3.1 Customizing the Soft Keys	24
5. FISH FINDER SETUP MENU	27
5.0 Preset	27
5.1 PAGE SELECTION	27
5.1.0 Auto	28
5.1.1 Full Display	28

5.1.2	Zoom Full page	28
5.1.3	Chart/Fish	29
5.2	GAIN MODE	29
5.2.0	Auto Mode	29
5.2.1	Manual Mode	29
5.3	RANGE MENU	29
5.3.0	Range Mode	29
5.3.1	Depth	30
5.3.2	Shift	30
5.4	INTERFERENCE REJECTION	30
5.5	SENSITIVITY MENU	31
5.5.0	Gain	31
5.5.1	STC (Sensitivity Time Control)	31
5.5.2	Surface Noise Filter	32
5.6	DISPLAY SETUP	33
5.6.0	Color Settings	33
5.6.1	Scrolling Speed	33
5.6.2	White Line	33
5.6.3	Fish Symbols	33
5.6.4	A-Scope	33
5.6.5	Water Temperature	34
5.7	TRANSDUCER SETUP	34
5.7.0	Keel Offset	34
5.7.1	Calibrate Water Speed	34
5.7.2	Calibrate Water Temp	34
5.7.3	Calibrate Aux Temp	34
5.7.4	Set Defaults	34
5.8	ALARMS	34
5.8.0	Shallow Water	35
5.8.1	Depth Water	35
5.8.2	Fish	35
5.8.3	Temperature Upper	35
5.8.4	Temperature Lower	35
5.8.5	Temperature Rate	35
5.9	SAVE SETTINGS TO USER C-CARD	35
5.10	LOAD SETTINGS FROM USER C-CARD	36
5.11	RESTORE CURRENT PRESET DEFAULTS	36
6.	FF520 SPECIFICATIONS	37
7.	TIPS OF OPERATIONS FAQ	39
INDEX	43

1. INTRODUCTION

This chapter provides basic information in becoming familiar with the advanced functions of the FF520 before you start using it combined with the STANDARD HORIZON GPS Chart Plotters.

1.0 GENERAL INFORMATION

The STANDARD HORIZON GPS Chart Plotters combined with the sonar performance of the FF520 creates the most advanced marine navigation system available. This Owner's Manual covers the Fish Finder functions of the FF520 when used with the STANDARD HORIZON GPS Chart Plotters.

The FF520 advanced features include:

- A-Scope (displays Sonar Echo in real time)
- Preset modes (Fish, Cruise)
- 2x and 4x Zoom (capability to magnify any part of the Fish Finder image of a fixed rate)
- Bottom Lock (capability to magnify a user defined range around the bottom)
- White Line (help distinguish between fish and bottom, when fish are swimming close to the bottom)
- Sensitivity Time Control (STC) reduces Surface Clutter shown on the display by reducing echoes from water disturbances
- Surface Noise Filter (suppresses the displaying of Surface Clutter)
- Interference Rejection (allows reducing interference from other boats/Fish Finders)
- Noise Filter
- Fish Symbol feature
- Transducer ID (automatically selects power output and parameters for best performance).
- Dual Frequency: 50 and 200kHz with the capability to display the two frequencies at the same time.
- Dual Power output: 500/1000W (4000/8000Wpp) depending on the transducer connected. Refer to Par. 3.0.7 "Optional Transducers ID Sensors".
- Max Depth*: 1KW - 1200Ft (365m) at 200kHz, 4000Ft (1219m) at 50kHz
500W - 700Ft (213m) at 200kHz, 1500Ft (457m) at 50kHz
- Min Depth: 2.5Ft (0.8m) at 200kHz, 5Ft (1.6m) at 50kHz
- Max Typical*: 1KW - 980Ft (299m) at 200kHz, 2700Ft (823m) at 50kHz
500W - 600 Ft (183m) at 200kHz, 1350Ft (411m) at 50kHz

NOTE*

This is not a guaranteed specification. The actual maximum depth capability of the system depends on the type of transducer fitted, the reflectivity of the bottom, water condition, etc.

- Speed Sensor (if available on transducer)
- Dual temperature inputs Sensor (One channel TEMP1, Optional second channel TEMP2) - if available on transducer
- Trip Log
- External buzzer connections (buzzer not supplied)
- Alarms - Shallow, Depth, Temp Upper, Temp Lower

NOTE

Transducer ID is only available with STANDARD HORIZON DST520, DST521, DST523, DST525, DST526, DST527 and DST528 transducers.

Performance of the FF520 used in conjunction with optional transducers (sold separately) will vary based on water conditions, bottom composition, boat hull, vessel speed, installation, and specific transducer model. This includes but is not limited to both minimum and maximum depth performance.

1.1 PACKING LIST

When the package containing the FF520 is first opened, please check for the following contents.

1.1.0 Replacement Part

Replacement part	Item
S8101640	Tee cable FF520
S8101641	Power cable FF520
EM027X100	Owner's Manual
XUAIR0029	DST521 Paddlewheel repair kit
XUAIR0030	DST521 Mounting bracket
XUAIR0018	DST526 Paddlewheel repair kit

2. MOUNTING THE FF520

The FF520 must be properly installed according the following instructions to get the best possible performance.

NOTE

TRANSDUCER: refer to Chapter 3 and to the Installation Manual supplied with the Transducer.

2.0 INSTALLATION

The FF520 is designed to be mounted horizontally or vertically to enable it to be installed in the most convenient position. Although the unit is water resistant, care must be taken to select a location where it will not be subjected to spray or rain. After the cables have been run, and connected as per Par. 2.1, mount the FF520 in the desired location using the supplied hardware.

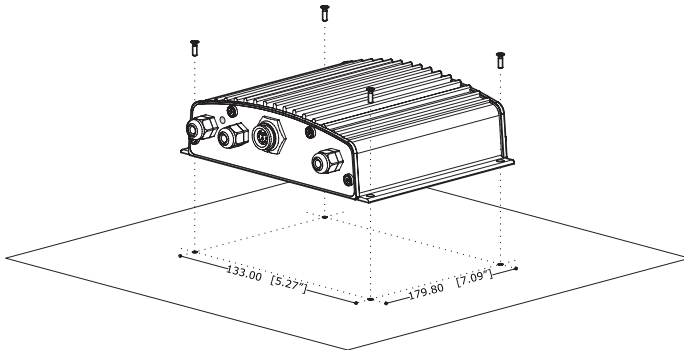


Figure 2.0 - The FF520 Installing

2.1 CONNECTIONS

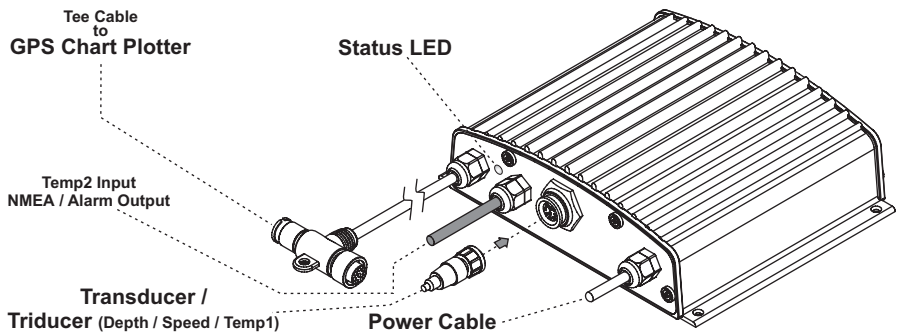


Figure 2.1 - The FF520

2.2 POWER CONNECTIONS

It is recommended the installation of a switch and a 5A fuse (not supplied) in the positive DC supply to the FF520.

The installation of a switch is necessary to turn On or Off the FF520. Standard Horizon recommends connection the FF520 and GPS Chart Plotter to the same switch and fused source as shown in the following images below.

2.3 GPS CHART PLOTTER CONNECTIONS

The FF520 is connected to Standard Horizon GPS Chart Plotters via the TEE Cable. Refer to the following images below.

2.4 TEE CABLE

If the Tee cable is too large to route through your boat, the FF520 can be opened to remove the cable for easier routing. Also if the Tee cable is not long enough cable can be added.

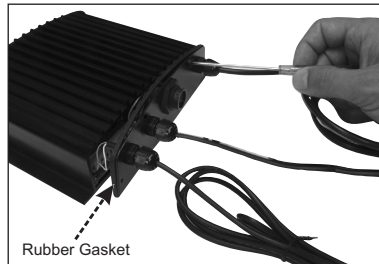


Figure 2.4 - Removing Panel

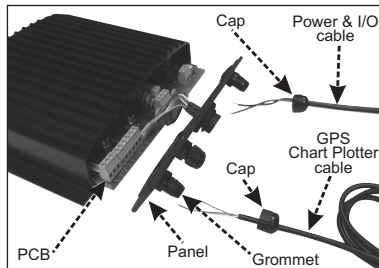


Figure 2.4a - Removing Power and Tee cables

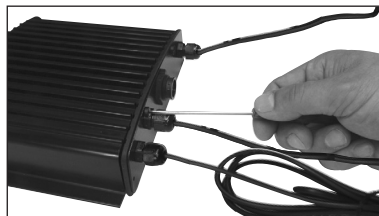


Figure 2.4b - Reinstalling Case

1. Open the FF520 box by unscrewing the four screws.
2. Once the screws are removed, pull out the panel and the Printed Circuit Board (PCB).
3. Unscrew the cables from the PCB.
4. Wire the cables as needed.
5. Reconnect the cables to the PCB.

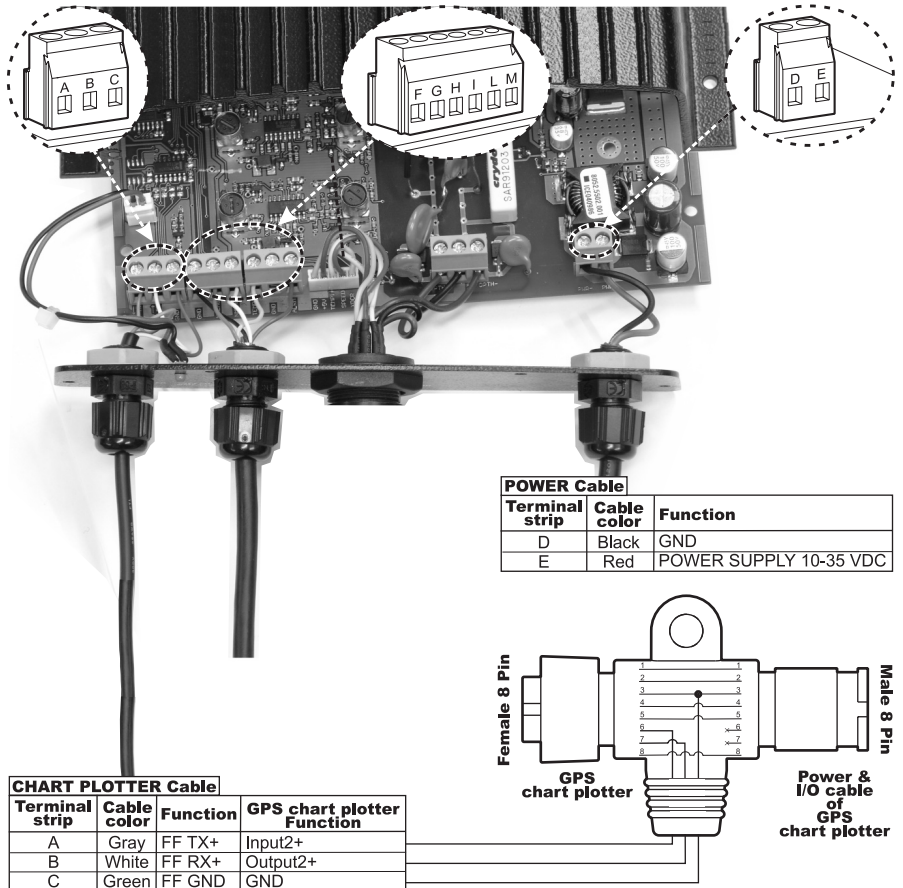


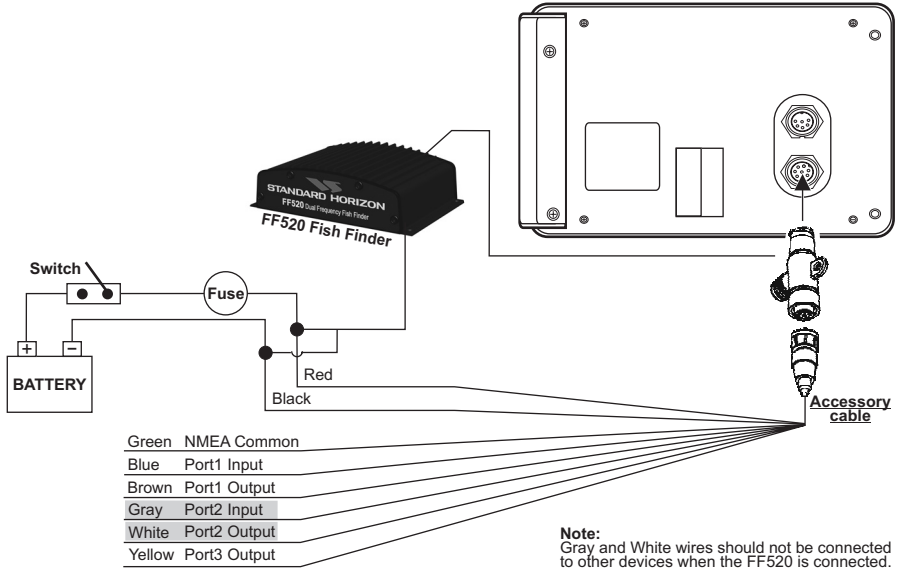
Figure 2.4c - Internal connections

6. Push the panel towards the case (be sure to have well positioned the rubber gasket).
7. Close the FF520 box by screwing the four screws.

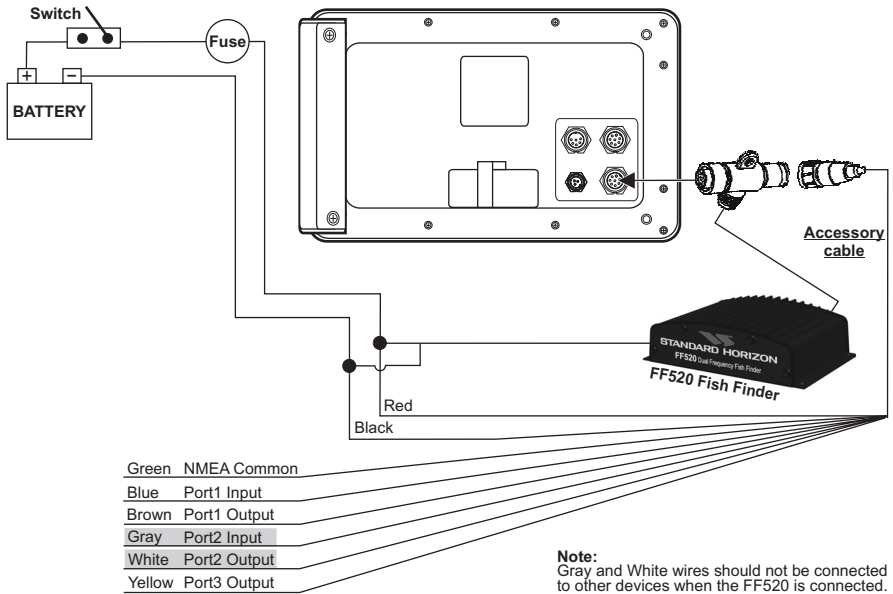
IMPORTANT

Refer to software setup section after connections have been made.

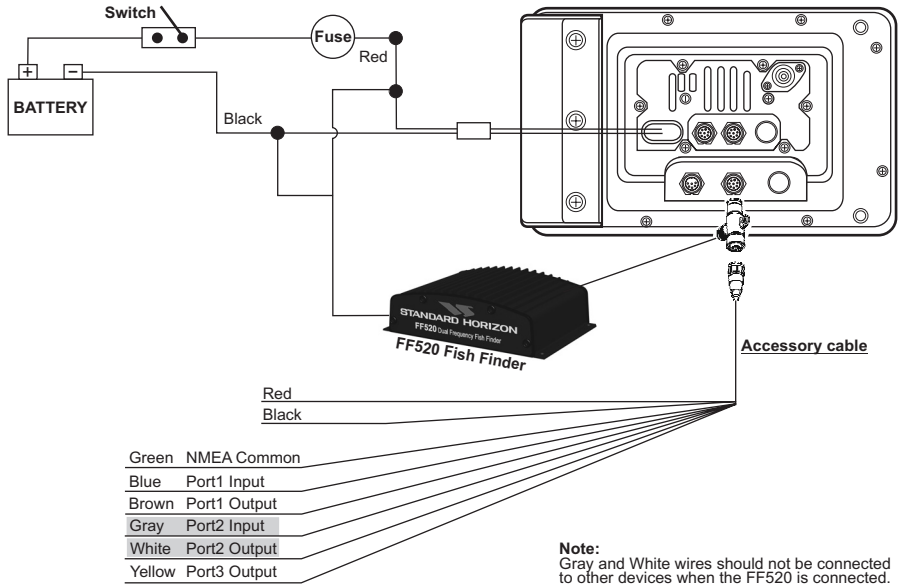
2.4.0 CP180 and CP180i



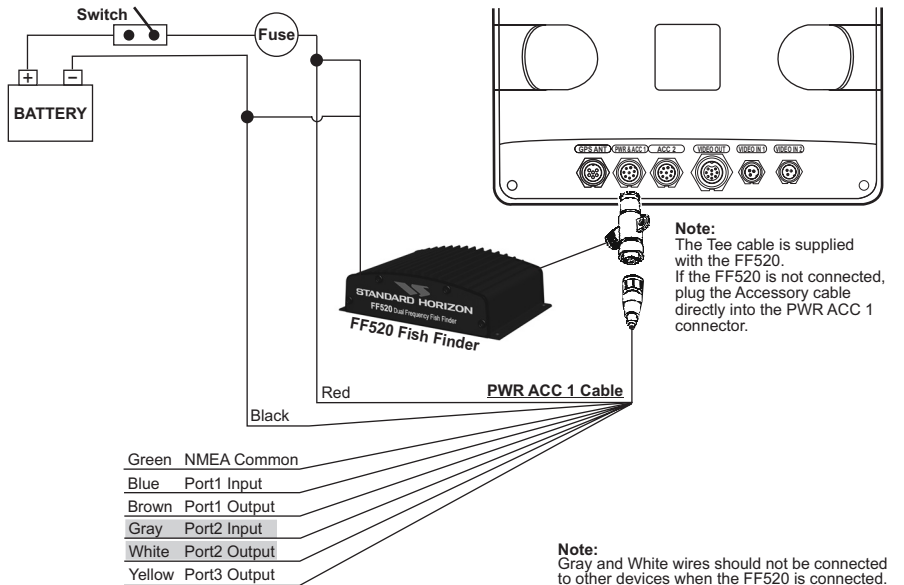
2.4.1 CP300 and CP300i



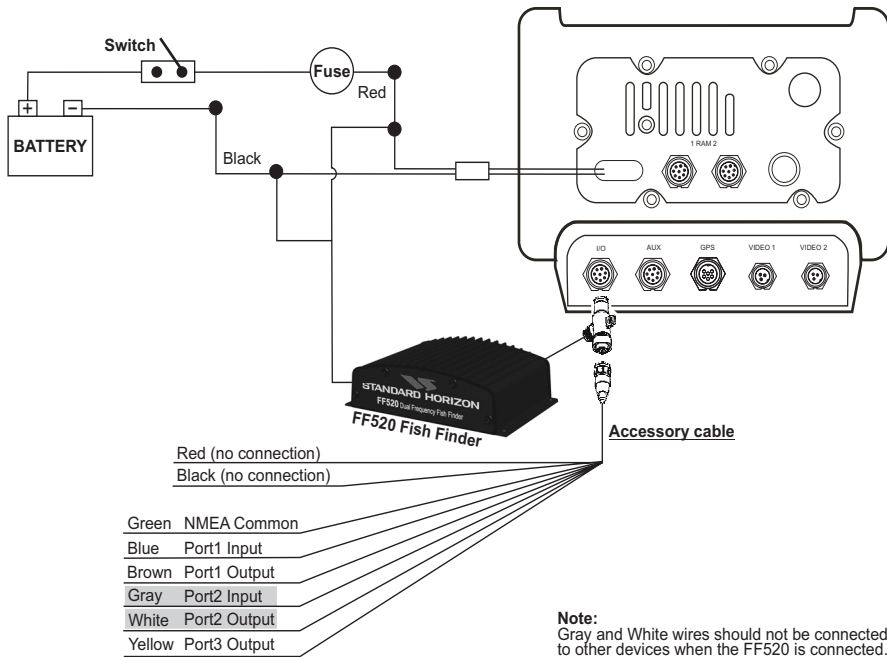
2.4.2 CPV350



2.4.3 CP500



2.4.4 CPV550



2.5 SOFTWARE SETUP

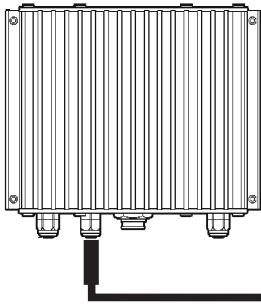
After connections have been made, the GPS Chart Plotter must be setup to communicate with the FF520. Port 2 of the NMEA In/Out Communication Setup menu must be changed to FF520 as shown below for communications.

1. From the Chart page, press **[MENU]**. Move the ShuttlePoint knob to highlight **SETUP MENU** and press **[ENT]**.
2. Move the ShuttlePoint knob to highlight **ADVANCED SETUP** and press **[ENT]** or move the ShuttlePoint knob to the right.
3. Move the ShuttlePoint knob to highlight **IN/OUT CONNECTIONS** and press **[ENT]** or move the ShuttlePoint knob to the right.
4. Move the ShuttlePoint knob to highlight **PORT 2 INPUT** and press **[ENT]** or move the ShuttlePoint knob to the right.
5. Move the ShuttlePoint knob up/down to select **FF520** and press **[ENT]** or move the ShuttlePoint knob to the right.
6. Press **[CLR]** or move the ShuttlePoint knob to the left until the Chart page is shown.

2.6 OPTIONAL CONNECTIONS

The FF520 is supplied with connections that allow the FF520 to be connected to the following external devices:

- a. NMEA device capable of listening to DBT, DPT, VHW, VLW, MTW
- b. Temperature sensor (10K ohms at 77°F)
- c. 12VDC alarm buzzer (400mA max current draw)



WIRE COLOR	FUNCTION
BLACK	GND
RED	Not connected
WHITE	NMEA Output(+)
GREEN	NMEA GROUND
GRAY	Not connected
YELLOW	Temp 2 INPUT(+)
BROWN	Not connected
BLUE	Alarm OUTPUT(+)
ORANGE	Not connected
PINK	Not connected

Figure 2.6 - The FF520 Optional Connections

2.6.0 NMEA Output

The following sentences are output: DPT and DBT (Depth), VHW (Speed), VLW (Trip Log), MTW (Water Temperature), XDR (External Sensor Temperature).

2.6.1 Alarm Buzzer

This connection has the capability to drive a buzzer that draws 400mA. Any 12VDC buzzer within the current draw requirements can to be connected.

2.6.2 Temperature Sensor

Any thermistor type temp sensor that produces 10K ohms at 77°F can to be connected.

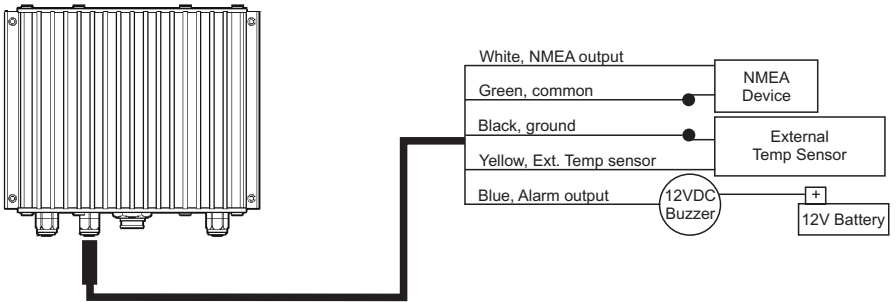


Figure 2.6.2 - Optional Connections

3. TRANSDUCER

WARNING

When plugging in or unplugging a transducer to the FF520 make sure power is turned Off.

The transducer is a device that transmits and receives sound waves into the water. The active component inside the transducer is commonly referred to as an element but actually is a piezoelectric ceramic material.

3.0 TRANSDUCER MOUNTING

3.0.0 Power Boats

Basically there are two hull types of powerboats: Planing and Displacement. In the following pictures the boxes with lines are where the transducer should be installed.



Figure 3.0.0 - Planing (on the left) and Displacement (on the right)

The planing hull allows the boat to rise quickly out of the water, allowing the boat to travel at higher speeds.

The displacement hull does not ride up on top of the water; rather it pushes through the water.

3.0.1 Sailboats

Mount the transducer in the first third part of the boat, just forward of or the side of the keel.



Figure 3.0.1 - Fin Keel (on the left) and Full Keel (on the right)

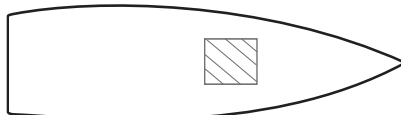


Figure 3.0.1a - Mounting Area

3.0.2 Transducer Types

Since there are many different shapes and sizes of hulls, STANDARD HORIZON offers a range of Depth transducers to fit the vessels requirements.

3.0.3 Low Profile Thru-Hull

If the user is planning to mount a thru-hull transducer first he has to know the dead rise angle where the transducer will be located on the boat. The "Dead Rise" is a nautical term that refers to the angle of the hull where the transducer will be mounted (see picture below).

Specific transducers are designed to be installed on boats with different dead rises.

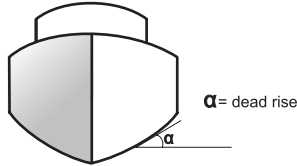


Figure 3.0.3 - Dead rise

3.0.4 Transom (POWER BOATS ONLY)

The back of a boat is called the transom this is where this transducer is mounted. This transducer has a bracket that is screwed down onto the hull.

3.0.5 Fairing Block

Used when a hull is over 10-15 degrees this type of transducer should be used.

- What makes this transducer different from a Low Profile transducer is that it is used with a Fairing Block.
- The Fairing Block is used to compensate the dead rise of the hull. The Fairing Block STANDARD HORIZON offers is made from hard plastic which fits around the transducer.
- To install the transducer and Fairing Block, the user measures the dead rise of the hull and cuts the Fairing Block to that angle. One half of the Fairing Block mounts on the inside while the other part of the Fairing Block mounts on the outside of the hull.

3.0.6 In-hull

This transducer is epoxyed to the inside of the hull that is not more than 1/2 inch thick and is solid not cored.

3.0.7 Optional Transducer ID Sensors





						
DST 520 2" Nylon Thru-hull Depth & Temp	DST 521 Transom Mount, Depth, Speed & Temp	DST 523 2" Bronze Thru-hull Depth & Temp	DST 525 In-Hull Mount, Depth	DST 526 Bronze Thru-hull, Triducer, Depth, Speed & Temp, with fairing block	DST 527 In-Hull Mount, Depth	DST 528 Thru-hull, Long stem, Depth & Temp, with fairing block
500W Transducers					1000W Transducers	

Figure 3.0.7 - Optional Transducers

3.0.8 Fish Finder Basics

The FF520 consists of a high power transmitter, sensitive receiver and a transducer. The FF520 sends an electrical pulse to the transducer, which contains an element that converts the pulse into acoustic (sound) wave, which is sent through the water. As this wave travels from the transducer to the bottom, it may strike fish, structures, thermalclines (temperature changes in the water). When the wave strikes an object(s) a certain amount of the wave is reflected back to the transducer depending on the composition and shape of the object. When the reflected wave is returned to the transducer it is converted into a voltage and is amplified by the receiver, processed and sent to the display. The speed of sound in water is roughly 4800 Ft/sec, so the time lapse between the transmitted signal and the received echo can be measured and the distance to the object determined.

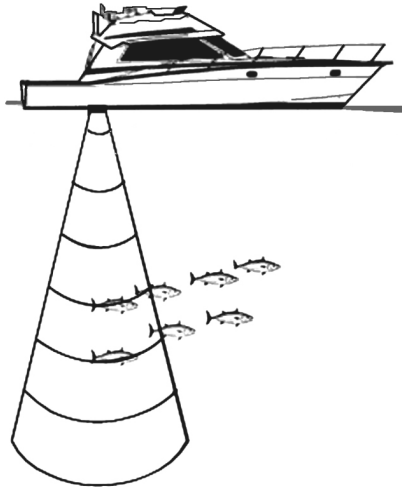


Figure 3.0.8 - Fish Finder working principle

4. OPERATION

4.0 UNDERSTANDING THE FISH FINDER PAGE

The display on STANDARD HORIZON GPS Chart Plotters shows a history of time of the echoes received by the transducer. The STANDARD HORIZON GPS Chart Plotters have a menu that allows adjustments to receiver sensitivity, depth range and scrolling speed of the Fish Finder display.

- ① Warning message
- ② Fish Finder window
- ③ Color Bar
- ④ Digital Depth
- ⑤ Water temperature
- ⑥ Shallow Alarm Bar
- ⑦ Range Bar
- ⑧ Variable Depth Marker (VDM)
- ⑨ A-Scope
- ⑩ Deep Alarm Bar
- ⑪ Transmit Frequency

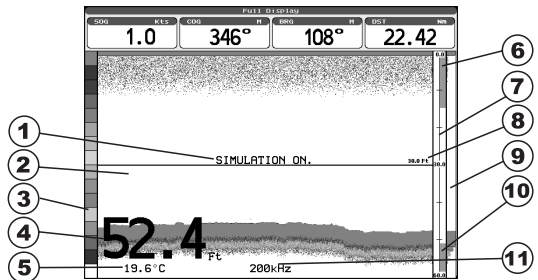


Figure 4.0 - The Fish Finder page

Following there is a brief description of terms listed in the previous Figure:

- ① **Warning Message**
This is a flashing label that is turned On when the echo sounder is in Simulation mode.
- ② **Fish Finder window**
It is the graphic presentation of sonar soundings recorded as a continuous profile scrolling across the screen from right to left. Such recordings represent the image of the water beneath your boat, items appear as they pass under your transducer; the items on the right side of the screen are closer to you than those on the left. The correct interpretation of the Fish Finder page allows retrieving useful information about what is under the boat.
- ③ **Color Bar**
The colored scale located on the left side of the screen that shows the colors used in the Fish Finder page to represent the echoes strength. The color on the top of the bar represents the maximum echo strength, while the color on the bottom of the bar represents the minimum echo strength.
- ④ **Digital Depth**
Readout of the current bottom depth.
- ⑤ **Water Temperature**
Readout of the current water temperature returned by the temperature sensor located in the depth transducer (TEMP1 sensor).

- ⑥ **Shallow Alarm Bar**
Located on the right side of the depth ruler showing the range outside of which the depth measurement will trigger a Shallow Alarm.
- ⑦ **Range Bar**
Vertical graduated bar that is located along the right side of the screen. It is a scale which reflects the depth of the area being displayed.
- ⑧ **Variable Depth Marker (VDM)**
Horizontal line on to the Fish Finder page window with a depth label. Move the ShuttlePoint knob Up or Down to change the position of the VDM. The label displays the depth of the cursor position. The VDM can be moved to any location pinpointing the depth of a target.
- ⑨ **A-Scope**
Real time representation of fish and bottom features passing through the beam of the transducer, drawn as column of horizontal lines whose length and hue is proportional to the echo strength returned. The stronger the echo the larger shall be the line height. The hue depends on the currently selected palette. When the default palette is selected, the strongest sonar returns will be shown as red and weaker returns will be shown blue.
- ⑩ **Deep Alarm Bar**
Located on the right side of the depth ruler showing the range outside of which the depth measurement will trigger a Deep alarm.
- ⑪ **Transmit Frequency**
Shows the selected depth transmit frequency.

4.1 UNDERSTANDING THE FISH FINDER DISPLAY

- ① Fishes
- ② Thermoclines
- ③ White Line
- ④ Surface Clutter
- ⑤ Structures
- ⑥ Bottom Echo Profile

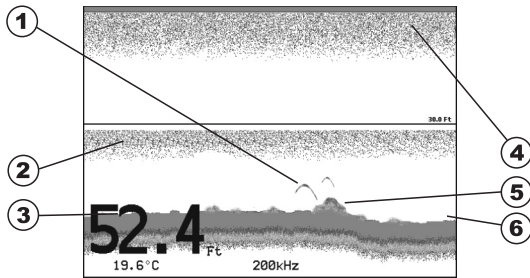


Figure 4.1 - The Fish Finder display

- ① **Fishes**
Fishes are represented as arcs because of the cone angle of the transducer. In fact as the boat passes over the fish the leading edge of the cone strikes the fish, causing a display pixel to be turned on. As the boat passes over the fish, the distance to the fish decreases turning each pixel on at a shallower depth on the display. When the boat is directly over the fish, the first half of the arch is formed and since the fish is closer to the boat, the signal is stronger and the arch is thicker. As the boat moves away from the fish, the distance increases and the pixels appear at progressively deeper depths forming the remaining half of the arch.

② **Thermoclines**

Are the zones where two layers of different water temperatures meet. The greater the temperature differential, the denser the thermocline shows on the screen. Thermoclines are represented as horizontal stripes of noise. They are very important for fishing since often many species of game fish like to suspend in, just above, or just below the thermoclines.

③ **White Line**

The White Line shows the difference between hard, soft bottoms and even distinguishes between fishes and structures located near the bottom. In this way it is easier to tell the difference between a hard and soft bottom and even to distinguish fishes and structures located nearby the bottom. For example, a soft, muddy or weedy bottom returns a weaker echo that is shown with a narrow white line while a hard bottom returns a strong echo that causes a wide white bottom line.

④ **Surface Clutter**

Appears like noise at the top of the screen extending many feet below the surface. It's caused by many things, including air bubbles, bait fish, plankton and algae.

⑤ **Structures**

Generally, the term "structure" is used to identify objects like wrecks and weeds rising from the bottom.

⑥ **Bottom Echo Profile**

Bottom profile recorded by the FF520. When the echo sounder is set in Auto Range mode it is automatically kept in the lower half of the screen.

4.2 DISPLAYING THE FISH FINDER PAGE

This section explains how to show and customize the selection of the Fish Finder display pages.

Legend:

[MENU] If you see brackets around a bold and capital letter word this refers to a key press.

[CHART] If you see brackets around a bold and small capital letter word this refers to a Soft Key press.

PAGE SELECTION An underlined word refers to a selection in the menu.

1. From all pages except the Fish Finder page, press **[MENU]**.
2. Move the ShuttlePoint knob to highlight **FISH FINDER**.

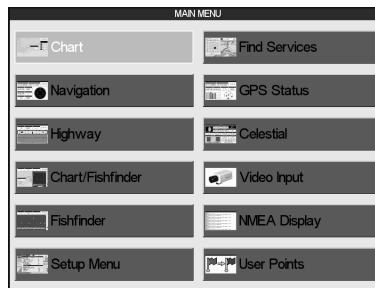


Figure 4.2 - Main Menu

3. Press **[ENT]** to select the Fish Finder Setup menu.

4.2.1 Customizing the Fish Finder menu selection

The default setting of the **FISH FINDER** selection in the Main Menu is 200kHz Full page. However this may be changed to show images as shown in the following Figure.

From the Chart page:

1. Select the Fish Finder page.
2. Press **[MENU]**, move the ShuttlePoint knob down to select **PAGE SELECTION** and press **[ENT]** or move the ShuttlePoint knob to the right.
3. The PAGE SELECTION window will be shown. Move the ShuttlePoint knob up/down or left/right to select the desired display and press **[ENT]**.

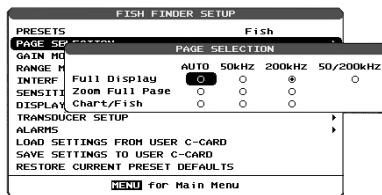


Figure 4.2.1 - Page Selection menu

4.3 SOFT KEY OPERATION (EXCEPT CP180/CP180i)

1. Press any of the Soft Keys to show the key descriptions, then press the 200kHz Full Soft Key if it has been customized (for detail see the next paragraph).

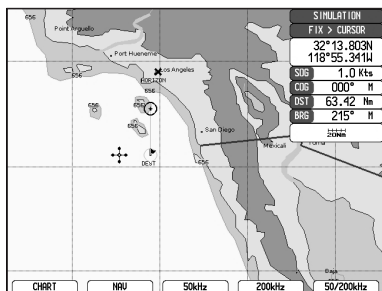


Figure 4.3 - Example of Fish Finder page selection by Soft Keys

4.3.1 Customizing the Soft Keys

To customize a Soft Key, from Chart page:

1. Press any of the Soft Keys.
2. Press and hold one of the Soft Keys until the menu is shown in the following picture.

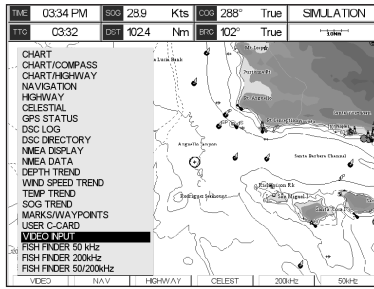


Figure 4.3.1 - Customizing Soft Keys

3. Move the ShuttlePoint knob to the desired Fish Finder page and press **[ENT]**.

5. FISH FINDER SETUP MENU

There are two methods to select the Fish Finder Setup menu:

1. From the Chart page
 - a. Press **[MENU]**, move the ShuttlePoint knob to **SETUP** (Setup menu) and press **[ENT]**.
 - b. Move the ShuttlePoint knob to **FISH FINDER SETUP** and press **[ENT]**.
2. From the Full Fish Finder page
 - a. Press **[MENU]** to show the Fish Finder Setup menu.

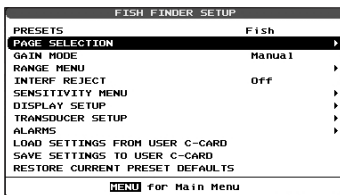


Figure 5 - Fish Finder Setup menu

The following paragraphs describe the Fish Finder Setup menu sub-options.

5.0 PRESET

To simply menu selections, the FF520 has two presets that can be easily selected for Fishing or Cruising:

	FISH	CRUISE
Gain	Auto	Auto
Range mode	Auto	Auto
Gain offset	0%	10%
Shift	0	0
STC	Short	Short
Noise level	2	4
Scrolling Speed	10	10
Fish Symbols	Echo	Echo
A-Scope	On	On
Surface Declutter	4	4

NOTE

For Gain and Gain Offset settings refer to Sensitivity menu (see Par. 5.5).

For Range and Shift settings refer to Range menu (see Par. 5.3).

5.1 PAGE SELECTION

The Page Selection menu allows you to adjust the Fish Finder display page to your preference.

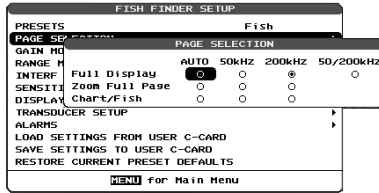


Figure 5.1 - Page Selection menu

The Page Selection options are:

5.1.0 Auto

Automatically switches the transmit frequency depending on the water depth:

- a. 200kHz, less than 400Ft
- b. 50kHz, greater than 400Ft

5.1.1 Full Display

Allows the user to setup the Chart Plotters display to show 200kHz, 50kHz or 200/50 kHz split screen Fish Finder.

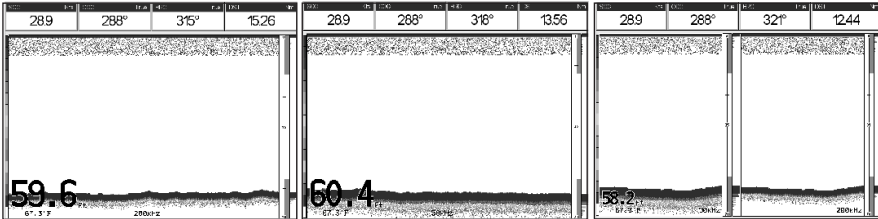


Figure 5.1.1 - Full Display pages

5.1.2 Zoom Full page

Allows the user to zoom into the 200kHz or 50kHz Fish Finder display to show detail of the area selected by the VRM (Variable Range Marker). The right display shows the zoomed display and the right display shown the unzoomed display.

To select the area to be zoomed in move the ShuttlePoint knob Up or Down which moves the VRM line.

To zoom In or Out, press [ZOOM IN] or [ZOOM OUT] or, on the CPV350 and CPV550 press [ZOOM] and rotate the channel knob.

The zoom ranges are 2x and 4x the normal Fish Finder display.

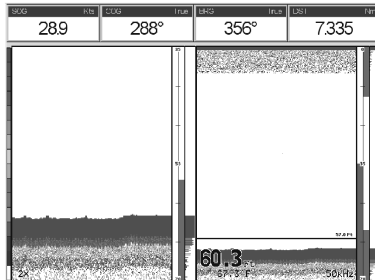


Figure 5.1.2 - Zoom Full page

5.1.3 Chart/Fish

Selects the Chart Plotters display to show the Chart page on the left half of the screen and the Fish Finder on the right half of the screen. 200kHz or 50 kHz Fish Finder can be selected on the right half of the display.

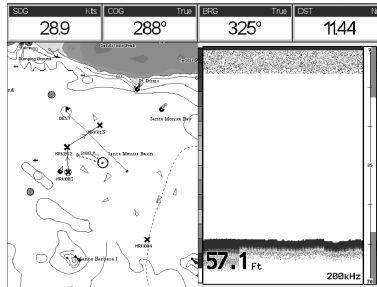


Figure 5.1.3 - Chart/Fish page

5.2 GAIN MODE

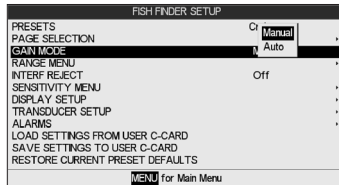


Figure 5.2 - Gain Mode menu

5.2.0 Auto Mode

Allows the Gain to FF520 to automatically adjust receiver Gain depending on water depth.

5.2.1 Manual Mode

Allows the user to change the Gain of the receiver manually to fine tune the FF520's receiver.

5.3 RANGE MENU

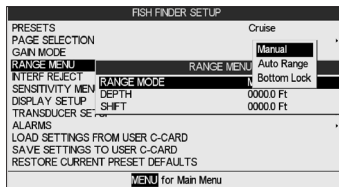


Figure 5.3 - Range menu

5.3.0 Range Mode

Selects among Manual, Auto Range and Bottom Lock.

5.3.0.0 Manual Mode

Used to set the depth Range (from the surface) the Fish Finder display will show.

5.3.0.1 Auto Range

The Fish Finder determines automatically the Range as to keep the bottom visible in the lower bottom of the screen. In this mode, Shift is always set to 0.

5.3.0.2 Bottom Lock

The Bottom Lock function keeps the screen display locked onto a certain Range around the bottom. Let's say the bottom is 400Ft and the Bottom Lock Range is set to display 30Ft around the bottom, the screen (instead of displaying from 0Ft to e.g. 450Ft) will display only a Range of 30Ft around the bottom, e.g. from 380Ft to 410Ft.

5.3.1 Depth

Moves the display from showing the bottom to the depth value entered.

5.3.2 Shift

Shifts the display from the bottom of the transducer to the depth value entered.

Example: Your vessel is in about 57Ft of water, however there is fish suspended in 35Ft of water. You want to display to 10Ft area around the fish. Shift would be set to 25Ft and Depth would be set to 35Ft shown in example below.



Figure 5.3.2 - Example of Depth and Shift

5.4 INTERFERENCE REJECTION

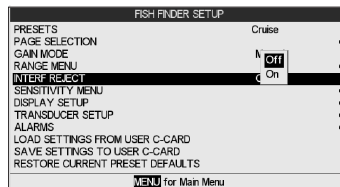


Figure 5.4 - Interference Rejection menu

Turns On or Off a filter to remove noise from external devices.

5.5 SENSITIVITY MENU

All settings in the Sensitivity menu are related to the selected Fish Finder transmit frequency (50 or 200kHz).

SENSITIVITY MENU	
GAN	000 %
STC	Off
STC STRENGTH	011
STC STRENGTH	000 %
SURF NOISE FLT	Off

Figure 5.5 - Sensitivity menu

5.5.0 Gain

Allows you to control the Sensitivity of the unit's receiver from 0 to 99%. To see more detail, increase the receiver Sensitivity by selecting a higher Gain percentage. If there is too much detail or if the screen is cluttered, lowering the Sensitivity may increase the clarity of the display.

NOTE

When the Gain Mode option is set to Auto, the receivers Gain cannot be changed.

When the Gain Mode option is set to Manual, the Gain can be manually adjusted. When switching from Automatic to Manual Mode, the Gain + Offset value is copied into the Manual Gain setting of the receiver.

5.5.1 STC (Sensitivity Time Control)

The purpose of this selection is to filter surface noise.

The STC functions reduces or eliminates Surface Clutter signals by changing the Sensitivity of the receiver, decreasing it near the surface and gradually increasing it as the depth increases. Its default value is SHORT for the 200kHz frequency and MID for the 50KHz frequency. Such values are good in most conditions. However when navigating in very shallow waters it may be necessary to switch it to OFF, while in very deep waters with a lot of Surface Clutter it may be better to increase it to MID or LONG.

NOTE

In some situations it may be necessary to adjust the STC so the sounder can read through the surface noise and show the bottom. One indication of the STC to be changed is when the display intermittently changes the depth from the correct depth to a very shallow depth.

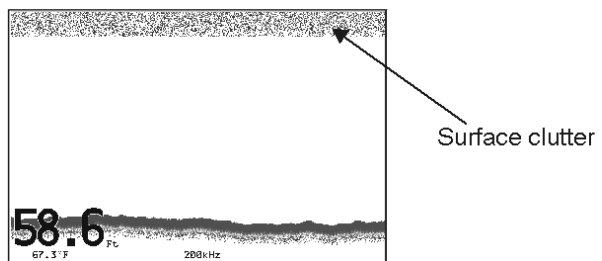


Figure 5.5.1 - STC - Surface Clutter

The STC can be changed from Short, Mid, Long and custom.

5.5.1.0 STC Length

This is the depth range which the STC operates. In custom mode it can be varied from 0 to 1000Ft (60 or 255Ft on previous software versions). In preset mode it's value is reported in the following table (See Par. 5.5.1.2).

5.5.1.1 STC Strength

It is the starting attenuation value of the STC. It acts by attenuating the Gain of the given percentage value. In custom mode it can be varied from 0% to 100%. The STC effect is maximum near the surface, to eliminate the Surface Clutter and it progressively diminishes to 0 at the selected STC depth.

5.5.1.2 Preset values table

	OFF	Short	Mid	Long
STC Depth (Ft)	1	60	60	255
STC Length	0	10%	30%	57%

If in VERY SHALLOW WATER the Fish Finder display is showing a bottom or digital readout deeper than the actual depth this situation may occur if STC is set to LONG or MID when the bottom is shallow. This issue may be resolved by adjusting the STC value to SHORT or even to OFF in very shallow waters.

If in DEEP WATER the Fish Finder display is showing a very shallow bottom or digital readout this may happen because in conditions of strong Surface Clutter the Fish Finder may erroneously look on to the Surface Clutter. To solve this situation try to increase the STC to LONG or to CUSTOM increasing the STC length and strength.

If in DEEP WATER the Fish Finder doesn't see the bottom, this may happen because the bottom is out of range or is very near to the maximum depth that can be tracked by the Fish Finder. In the latter case this may happen if the bottom composition is soft as mud, if the sea conditions are bad, there are thermoclines or the water is full of suspended materials (silt, plankton). All these factors may affect considerably the performance of the Fish Finder to be able to see the bottom. In these case change the RANGE MODE from AUTO to MANUAL Range and manually adjust the depth range until the bottom echo becomes visible on the Fish Finder display.

5.5.2 Surface Noise Filter

An automatic filter that attempts to dynamically removes Surface Clutter that causes the screen to be filled up with strong return echoes just below the surface. It may seem that the same functionality could be archived acting on the STC control however there is main difference between such controls in fact the STC control impacts on the capability to detect and track the bottom and is not designed to completely cancel the surface noise, on the other side the Surface Noise Filter attempts to cancel completely the surface noise but it doesn't affect the capability to detect and track the bottom.

The Surface Noise Filter has 9 settings: OFF, 1, ..., 8. When it is set to OFF the Surface Noise it is not cancelled. When it is set to 1 the Surface Noise is cancelled up to a depth of 5Ft, increasing the Surface Noise increases the depth in which the Surface Noise is cancelled up to a depth of 255Ft when the preset is set to 8, as shown in the Surface Noise Filter Table:

Surface Noise Filter Depth								
Preset	1	2	3	4	5	6	7	8
Depth (Ft)	5	10	15	20	30	60	130	255

5.6 DISPLAY SETUP

Allows the Fish Finder's display page appearance to be changed.

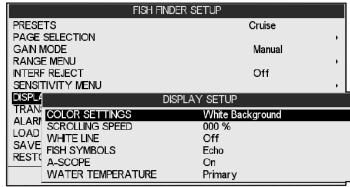


Figure 5.6 - Display Setup menu

5.6.0 Color Settings

Allows you to change the color of the Fish Finder display from Blue, White (default), Black, Gray scale.

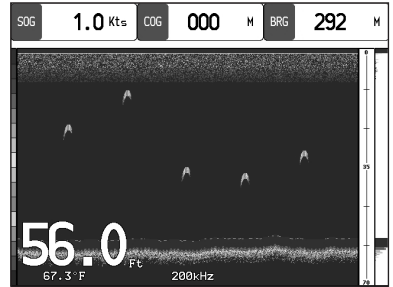
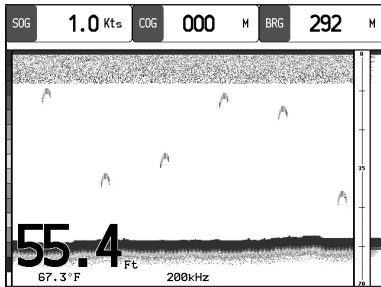


Figure 5.6.0 - White and Blue background examples

5.6.1 Scrolling Speed

Controls the rate the Fish Finder scrolls and updates the Fish Finder display.

5.6.2 White Line

Controls how the bottom type (hard or soft) is shown on the display. When the White Line is Off the bottom return will display as red. When the White Line is On it can be used to determine bottom hardness.

5.6.3 Fish Symbols

Controls the graphical representation of underwater-suspended targets.

- Echo : shown as arches (echoes)
- Icon + Echo : shown as arches with the Fish icon
- Icon + Echo + Depth : shown as arches with the Fish icon and relative depth values
- Echo + Depth : shown depth values
- Icon : shown as Fish icons without the arches
- Icon + Depth : shown as Fish icons and their relative depth values (shown accordingly to currently selected depth unit)

5.6.4 A-Scope

Shows the real time display of the echo from the bottom.

5.6.5 Water Temperature

Allows selection between the temperature sensor in the depth transducer and an external temp sensor connected to the Optional Connection wires.

5.7 TRANSDUCER SETUP

This menu allows you to calibrate the speed through the water, water temperature and the keel/prop offset of the transducer.

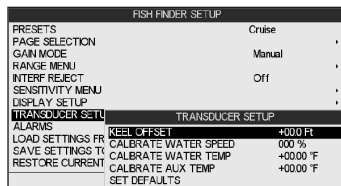


Figure 5.7 - Transducer Setup menu

5.7.0 Keel Offset

The keel offset can be set as to cause the Fish Finder to display an offset depth below the keel or the actual water depth from the surface. To setup to show the depth below the keel, enter a negative depth value or a positive depth to show offset from the transducers face to the water surface.

5.7.1 Calibrate Water Speed

Used to calibrate the Water Speed readings from the transducer. Adjustment can be made from -10% to +10%.

5.7.2 Calibrate Water Temp

Used to calibration on the Water Temperature sensor in the transducer.

5.7.3 Calibrate Aux Temp

Allows the calibration of the Aux Temperature sensor connected to the Optional Connection wires.

5.7.4 Set Defaults

Restores the factory settings.

5.8 ALARMS

The Alarms menu allows you to define alarm settings for Shallow Alarm, Depth Alarm and Temperature Upper/Lower/Rate.

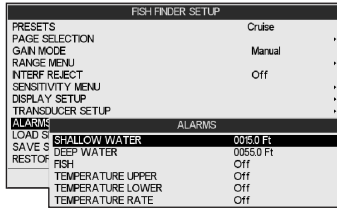


Figure 5.8 - Alarms menu

To set an Anchor Alarm, enter in a shallow water and depth value above and below your actual anchoring depth. The alarm will sound when the depth becomes shallower or deeper than the settings.

5.8.0 Shallow Water

Triggers an alarm when depth becomes shallower than the set depth.

5.8.1 Depth Water

Triggers an alarm when depth becomes deeper than the set depth.

5.8.2 Fish

The options for Fish Alarm set the size of the fishes that, if detected by the unit, switches an alarm to sound. The options are: Off, Small, Medium, Big and Huge. The alarm sounds if the set size (or bigger) is detected.

5.8.3 Temperature Upper

Triggers an alarm when the transducer reports a temperature above the set temperature.

5.8.4 Temperature Lower

Triggers an alarm when the transducer reports a temperature below the set temperature.

5.8.5 Temperature Rate

Triggers an alarm when the transducer reports a temperature variation rate above the set temperature.

5.9 SAVE SETTINGS TO USER C-CARD

This option saves the complete set of Fish Finder settings to the User C-CARD. This is useful to avoid the user having to retune up Fish Finder after a Clear RAM operation or a software update.

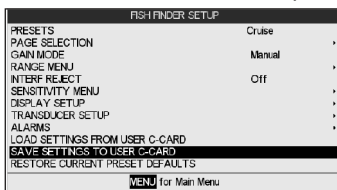


Figure 5.9 - C-Card - Save settings

5.10 LOAD SETTINGS FROM USER C-CARD

This option loads the complete set of Fish Finder settings from the User C-CARD (Memory Card that may be used to backup the User Points and Tracks too).

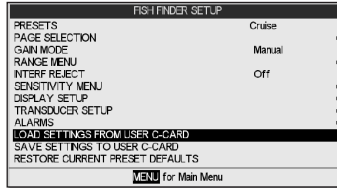


Figure 5.10 - C-Card - Load settings

5.11 RESTORE CURRENT PRESET DEFAULTS

This option restores the default values only for the current presets (see Par. 5.0, Preset) and does not affect the other presets.

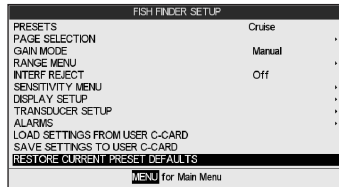


Figure 5.11 - C-Card - Restore settings

6. FF520 SPECIFICATIONS

Power supply	: 10 - 35 Volt dc
Max stand by current draw	: 1KW:142mA at 12 Volt dc : 500W:100mA at 12 Volt dc
Max current draw	: 1KW:1.42A at 12 Volt dc : 500W:1A at 12 Volt dc
Power Output	: 500/1000W (4000/8000W Peak to Peak)
Display Colors	: 16 colors
Display Vertical Resolution	: 400 pixels ON CPV350/CP300/CP300/CPV550/CP500 : 200 pixels ON CP180/CP180i
Frequency	: Dual 50 and 200kHz
Max Depth*	: 1KW:1200Ft (365m) at 200kHz; 4000Ft (1219m) at 50kHz : 500W:700Ft (213m) at 200kHz; 1500Ft (457m) at 50kHz
Min Depth	: 2.5Ft (0.8m) at 200kHz; 5Ft (1.6m) at 50kHz
Max Typical*	: 1KW:980Ft (299m) at 200kHz; 2700Ft (823m) at 50kHz : 500W:600 Ft (183m) at 200kHz; 1350Ft (411m) at 50kHz

NOTE*

This is not a guaranteed specification. The actual maximum depth capability of the system depends on the type of transducer fitted, the reflectivity of the bottom, water condition, etc.

NMEA output sentences	: Depth: DBT, DPT Temperature: MTW Speed (with DST526): VHW
------------------------------	---

Weight	: 2.20 LBS (1 kg)
Operating temperature range	: 32°F to 122°F (0°C to +50°C)
Storage temperature range	: -4°F to 158°F (-20°C to +70°C)

Dimensions - mm (inch) :

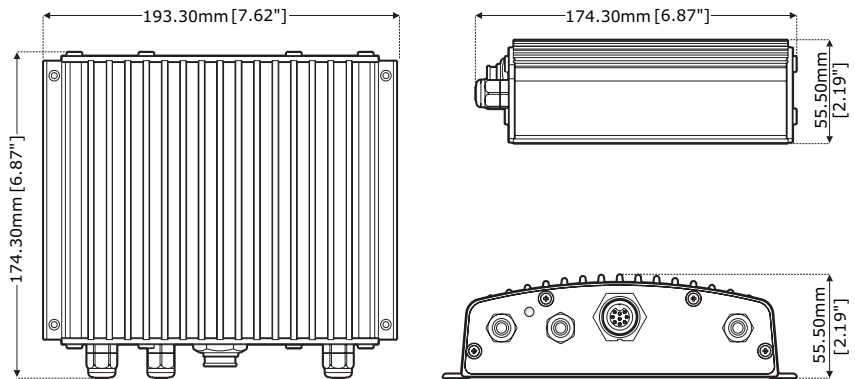


Figure 6 - FF520 Dimensions [mm/inch]

7. TIPS OF OPERATIONS FAQ

7.0 How can I disconnect the cables from the FF520 in case I need to do so for the installation?

- Open the FF520 box by unscrewing the four screws (see Figure on Par. 2.4).
- Once the screws are removed, pull out the panel and the Printed Circuit Board (PCB). Unscrew the cables from the PCB.
- Wire the cables as needed.
- Reconnect the cables to the PCB (see Figure 5.1 for reference).
- Push the panel towards the case (be sure to have well positioned the rubber gasket). Close the FF520 box by screwing the four screws.

7.1 How can I set optimal operating parameters?

Optimal operating parameters can be set accordingly with the intended use of the Fish Finder, to quickly get optimal operational parameters for fishing it is may be best to select the FISH preset from the Fish Finder Setup menu, while for cruising it is may be best to select the CRUISE preset.

7.2 What are preset modes?

Preset modes are pre-defined settings of the Fish Finder operating parameters. You can use them to quickly set the Fish Finder in the most commonly used operating modes.

These are:

- CRUISE: sets Fish Finder in full auto mode with the sensitivity settings (GAIN OFFSET, NOISE level and STC) optimized for displaying the bottom while underway.
- FISH : sets the Fish Finder in full auto mode with the sensitivity setting optimized for fish finding.

7.3 How can I restore the Fish Finder default operating parameters?

While the Fish Finder page is shown, press [MENU] and move the ShuttlePoint knob to Transducer Setup and press [ENT]. Move the ShuttlePoint knob to Set Defaults and press [ENT]. Press [CONFIRM] on the CP300/CP300i, CPV350, CP500 and CPV550, or on the CP180/CP180i press [ENT]. Note that this operation set all default settings, not only the working defaults.

7.4 Can I always leave the Fish Finder in Full Auto/(Auto Gain and Auto Range) mode?

Yes, but note that the full auto mode suits the 90% of the cases, however in extreme situations the auto modes may fail and thus it is necessary to switch to the Manual mode.

7.5 What are extreme situations in which auto modes may fail?

When the bottom is very deep, at high boat speed, when the bottom is very shallow (< 5Ft), when the water is full of materials in suspension, with bad sea conditions.

7.6 What should I do if the auto modes fail?

Failure of auto modes can happen for various reasons. Hereafter you can find a range of possibilities.

7.7 Auto-Range fails in very shallow waters displaying a digital depth readout deeper than the actual value. What should I do?

This usually happens if the STC is set to LONG or MID and the bottom is shallow or SHORT if the bottom is very shallow causing the Auto Range to hook to the second or third echo from the bottom (since in shallow waters the sound bounces more times back and forth the surface to the bottom). Try decreasing the STC value to SHORT in shallow waters or to switch it to VERY SHORT or OFF.

7.8 Auto Range fails, and the digital depth readout displays a very shallow reading. What should I do?

This usually happens if the STC is off or is set to a low value causing disturbance from Surface Clutter to be stronger than bottom echoes. Try increasing the STC value. As general rule STC has to be set as in shallow waters and LONG in depth waters.

7.9 Auto Range fails in very deep waters displaying a digital very shallow depth readout. What should I do?

The Fish Finder capability to detect the bottom decreases as the bottom depth increase. If the bottom composition is soft as mud, if the sea conditions are bad, if there are thermoclines or the water is full of materials in suspension it can further decrease thus causing the digital depth readout to fail. When this happens the Auto Range algorithm also fails. To recover from this situation it is necessary to switch to Manual Range mode and to set the Manual Depth mode. When Manual Depth mode is selected the algorithm that calculates the digital depth readout searches for the bottom within the range manually selected by the user. At this point it is necessary to increase manually the Range until the bottom becomes graphically visible. If the echoes from the bottom are strong enough, the Fish Finder shall look to the bottom giving a correct depth reading and shall be possible to return in Auto Range mode. Please note that if one or more of the conditions that reduce the echoes from the bottom listed above is true the bottom may be not visible at all, in this situation a strong thermocline or Surface Clutter may be interpreted by the Fish Finder as the bottom.

7.10 At a very shallow range upper half of the screen appears almost completely filled by the Surface Clutter. How can I eliminate it?

This is normal in shallow waters. To clean up the Surface Clutter without degrading the digital depth readout algorithm functionality there are two modes: 1) If Surface Declutter = OFF it is possible to set the STC value to custom setting the STC length to the same size of the Surface Clutter, and increasing the STC strength until the image on the screen cleans up. Please note that in very shallow waters it is usually better to switch to Manual Gain mode to reduce Gain fluctuation due to rapidly changing bottom conditions. 2) Using Surface Declutter, increase the Surface Declutter value until the Surface Declutter disappears completely.

7.11 Why do I never see fishes in the range between 0 to 2Ft?

The minimum range of the Fish Finder is 2Ft. In this interval the Fish Finder can detect neither the bottom nor any target.

7.12 How can I reduce the Surface Clutter?

You can act by: properly setting the STC as described at 7.10 and also by increasing the NOISE LEVEL and reducing the GAIN or the GAIN OFFSET (if you are in Auto Gain mode). However please note that a strong attenuation of Surface Clutter may also reduce the capability to detect targets.

7.13 The Fish Finder is in Auto Gain mode but the picture display too many small targets, what shall I do to reduce the screen clutter?

Try increasing the NOISE LEVEL or decreasing the GAIN OFFSET.

7.14 In very shallow waters when the Auto Gain mode is selected there are fluctuations in the bottom profile width and its color representation. What should I do?

In very shallow waters the environment situation (bottom/water condition) change very quickly thus causing the auto gain algorithm to create oscillations while trying to set optimal GAIN value for each situation. To avoid this it is advisable to switch to MANUAL GAIN mode and fine tune the GAIN to a fixed setting.

7.15 In very deep waters even setting the GAIN to its maximum value I cannot see the bottom what shall I do?

Try decreasing the NOISE LEVEL. If still the bottom is not visible there is nothing you can do, the bottom echo is simply too weak to be detected.

7.16 GPS Chart Plotter shows no data when viewing the Fish Finder page

This may be due to the FF520 having an issue. To confirm, listen to the depth transducer for the transmit pulse. If the pulse is not heard the FF520 is defective.

7.17 LED Status Indicator

The FF520 has a small LED that blinks. There are seven different LED behaviours, representing seven different diagnostic conditions described below.

- OFF : DC power is not being supplied to the FF520.
- ON CONTINUOUSLY : The transducer is not connected to the GPS Chart Plotter or problem with cable of the transducer cable.
- 1 LONG FLASH EVERY 2 SECONDS : The FF520 is not connected with the GPS Chart Plotter.
- 1 SHORT FLASH EVERY 2 SECONDS : The FF520 is connected to the GPS Chart Plotter and is operating correctly.
- 2 SHORT FLASHES EVERY 2 SECONDS : The FF520 is connected to the GPS Chart Plotter and is operating correctly.
- 3 SHORT FLASHES EVERY 2 SECONDS : A non-Standard Horizon transducer (without transducer ID) has been connected
- 4 SHORT FLASHES EVERY 2 SECONDS : No transducer connected.

INDEX

A	
A-Scope	7, 22, 33
Alarm Bar	22
Alarm Buzzer	15
Alarms	7
Alarms menu	34
Anchor Alarm	35
arcs	22
Auto	28
Auto Gain	39
Auto Mode	29
Auto Range	29, 30, 39
Aux Temp	34
B	
Bar	21, 22
Bottom Echo Profile	23
Bottom Lock	7, 29, 30
C	
C-Card - Load settings	36
C-Card - Restore settings	36
C-Card - Save settings	35
Calibrate Aux Temp	34
Calibrate Water Speed	34
Calibrate Water Temp	34
CAUTION	4
Chart page	29
Chart/Fish	29
Chart/Fish page	29
Clear RAM	35
Color Bar	21
Color Settings	33
connections	9, 11
CP180	4, 12, 24, 37, 39
CP180i	4, 12, 24, 37, 39
CP300	4, 12, 37, 39
CP300i	4, 12, 37, 39
CP500	4, 13, 37, 39
CPV350	4, 13, 37, 39
CPV550	4, 14, 37, 39
Cruise	7, 27, 39
current	37
Customizing the Soft Keys	24
D	
Dead Rise	18
Deep Alarm Bar	22
default settings	39
default values	36, 39
Depth	15, 21, 30, 33, 37
Depth Water	35
Digital Depth	21
Dimensions	37
Displacement	17
Display Colors	37
Display Setup menu	33
Display Vertical Resolution	37
Dual Frequency	7
Dual Power	7
E	
echo	21, 33
External buzzer	7
external devices	14
External Sensor Temperature	15
F	
factory settings	34
Fairing Block	18
FCC	4
features	7
FF520	19
FF520 Dimensions	37
FF520 Installing	9
FF520 Optional Connections	15
Fin Keel	17
Fish	7, 35, 39
Fish Alarm	35
Fish Finder Basics	19
Fish Finder display	21, 22
Fish Finder page	21
Fish Finder Setup menu	23, 27
Fish Finder window	21
Fish icon	33
Fish Symbol	7, 33
Fishes	22
Fishing	27
flashing label	21
Frequency	37
Full Display	28
Full Display pages	28
Full Keel	17
fuse	10
G	
Gain	31, 39
Gain Mode menu	29
GPS Chart Plotter	4, 7
H	
Horizontal line	22
I	
Icon	33
In-hull	18
In/Out Communication Setup	14
installation	9, 39
Interference Rejection	7, 30
Internal connections	11
K	
Keel Offset	34
L	
LED Status Indicator	41
Legend	23

M	
Main Menu	23
Manual Mode	29, 30
Manual Range	29
Max current draw	37
Max Depth	7, 37
Max stand by current draw	37
Max Typical	7, 37
Memory Card	36
menu selection	24
Min Depth	7, 37
N	
NMEA Output	15
NMEA output sentences	37
Noise Filter	7
O	
optimal operating parameters	39
Optional Connections	14, 15
Optional Transducer ID Sensors	18
P	
PACKING LIST	8
Page Selection	24, 27
PCB	39
Planing	17
Power Boats	17
POWER CONNECTIONS	10
Power Output	37
Power supply	37
Preset modes	7, 39
Preset values table	32
presets	27
R	
Range	39
Range Bar	22
Range menu	29
Range Mode	29
Replacement Part	8
Resolution	37
S	
Sailboats	17
Scrolling Speed	33
selection by Soft Keys	24
Sensitivity menu	31
Sensitivity Time Control	7, 31
sentences	15
Set Defaults	34
Shallow Alarm	22
Shallow Alarm Bar	22
Shallow Water	35
Shift	30
Soft Key	24
Sonar Echo	7
SPECIFICATIONS	37
Speed	15, 37
Speed Sensor	7
STC	7, 31, 40
STC Length	31
STC Strength	32
Structures	23
Surface Clutter	7, 23, 31, 40
Surface Noise Filter	7, 32
T	
TEE Cable	10
temperature	7, 21, 35, 37
Temperature Lower	35
Temperature Rate	35
Temperature Sensor	15
temperature sensor	21, 34
Temperature Upper	35
Thermoclines	23
Thru-Hull	18
transducer	7, 17, 18, 34, 41
Transducer ID	7
TRANSDUCER MOUNTING	17
Transducer Setup menu	34
Transducer Types	17
Transmit Frequency	22
Transom	18
Trip Log	7, 15
U	
User C-CARD	35
V	
Variable Depth Marker	22
VDM	22
Vertical graduated bar	22
W	
WARNING	4
Warning Message	21
Water Speed	34
Water Temp	34
Water Temperature	15, 21, 34
Weight	37
White Line	7, 23, 33
window	21
working principle	19
Z	
Zoom	7, 28
Zoom Full page	28

PLEASE NOTE

The following "Limited Warranty" is for customers that have purchased products in the United States. For Limited Warranty details outside the United States, contact the dealer in your country.

STANDARD HORIZON LIMITED WARRANTY

STANDARD HORIZON (a division of Vertex Standard USA) warrants, to the original purchaser only, each new Marine Product ("Product") manufactured and/or supplied by STANDARD HORIZON against defects in materials and workmanship under normal use and service for a period of 3 years from the date of purchase.

In the event of a defect, malfunction or failure of the Product during the warranty period, Standard Horizon's liability for any breach of contract or any breach of express or implied warranties in connection with the sale of Products shall be limited solely to repair or replacement, at its option, of the Product or part(s) therein which, upon examination by STANDARD HORIZON, appear to be defective or not up to factory specifications. STANDARD HORIZON may, at its option, repair or replace parts or subassemblies with or reconditioned parts and subassemblies.

To receive warranty service, the purchaser must deliver the Product, transportation and Insurance prepaid, to STANDARD HORIZON (Marine Division of Vertex Standard) - Attention Factory Service - 10900 Walker Street - Cypress, CA 90630, include proof of purchase indicating model, serial number and date of purchase.

STANDARD HORIZON will not warrant installation, maintenance or service of the Products. In all instances, STANDARD HORIZON's liability for damages shall not exceed the purchase price of the defective Product. This warranty only extends to Products sold within the 50 States of the United States of America and the District of Columbia.

STANDARD HORIZON will pay all labor and replacement parts charges incurred in providing the warranty repair service except where purchaser abuse or other qualifying exceptions exist. The purchaser must pay any transportation expenses incurred in returning the Product to STANDARD HORIZON for service.

This limited warranty does not extend to any Product which has been subjected to misuse, neglect, accident, incorrect wiring by anyone other than STANDARD HORIZON, improper installation, or subjected to use in violation of instructions furnished by STANDARD HORIZON, nor does this warranty extend to Products on which the serial number has been removed, defaced, or changed. STANDARD HORIZON cannot be responsible in any way for ancillary equipment not furnished by STANDARD HORIZON which is attached to or used in connection with Products, or for the operation of the Product with any ancillary equipment, and all such equipment is expressly excluded from this warranty. STANDARD HORIZON disclaims liability for range, coverage, or operation of the Product and ancillary equipment as a whole under this warranty.

STANDARD HORIZON reserves the right to make changes or improvements in Products, during subsequent production, without incurring the obligation to install such changes or improvements on previously manufactured Products. The implied warranties which the law imposes on the sale of this Product are expressly LIMITED, in duration, to the time period specified above. STANDARD HORIZON shall not be liable under any circumstances for consequential damages resulting from the use and operation of this Product, or from the breach of this LIMITED WARRANTY, any implied warranties, or any contract with STANDARD HORIZON. IN CONNECTION WITH THE SALE OF ITS PRODUCTS, STANDARD HORIZON MAKES NO WARRANTIES, EXPRESS OR IMPLIED AS TO THE MERCHANTABILITY OR FITNESS FOR A PARTICULAR PURPOSE OR OTHERWISE, EXCEPT AS EXPRESSLY SET FORTH HEREIN.

Some states do not allow the exclusion or limitation of incidental or consequential damages, or limitation on how an implied warranty lasts, so the above limitation or exclusions may not apply. This warranty gives specific legal right, and there may be other right which may vary from state to state.