

SonicWALL TZ 150 Wireless
Getting Started Guide

SonicWALL TZ 150 Wireless Getting Started Guide

The SonicWALL® TZ 150 Wireless is a total security platform for both your wired and wireless network, delivering true layered security by integrating gateway anti-virus, intrusion prevention and content filtering capabilities in an easy-to-use, low cost platform.

This Getting Started Guide provides instructions for basic installation and configuration of the SonicWALL TZ 150 Wireless. After you complete this guide, up to 10 computers on your wired and wireless network will have secure Internet access.

Note: For complete documentation, refer to the [SonicOS Standard 3.0 Administrator's Guide](#) available on the SonicWALL Resource CD included with your security appliance and on the Web at:
<<http://www.sonicwall.com/services/documentation.html>>.

Before You Begin

Check Package Contents

- One SonicWALL TZ 150 Wireless security appliance
- One SonicWALL TZ 150 Wireless Getting Started Guide
- One SonicOS Standard 3.0 Release Notes
- One SonicWALL Security Services Free Trial card
- One Ethernet cable
- One 12V, 1.66A power supply
- One SonicWALL Resource CD, which contains product documentation and software utilities.

Any Items Missing?

If any items are missing from your package, contact:

SonicWALL Support

Web: <<http://www.sonicwall.com/support/>>

E-mail: customer_service@sonicwall.com

SonicWALL TZ 150 Wireless Configuration

This Getting Started Guide covers the following procedures. Procedures 1 through 7 are required for initial configuration of your SonicWALL TZ 150 Wireless security appliance.

- | | | |
|----|--|---------|
| 1 | Collecting Required Information | page 3 |
| 2 | Applying Power to the SonicWALL TZ 150 Wireless | page 4 |
| 3 | Connecting the SonicWALL TZ 150 Wireless | page 5 |
| 4 | Accessing the Management Interface | page 6 |
| 5 | Using the SonicWALL Setup Wizard | page 8 |
| 6 | Testing Your Connection | page 17 |
| 7 | Registering Your SonicWALL TZ 150 Wireless | page 18 |
| 8 | Connecting Wireless Clients to the SonicWALL TZ 150 Wireless | page 23 |
| 9 | Connecting Computers to Your SonicWALL TZ 150 Wireless | page 27 |
| 10 | Mounting the SonicWALL TZ 150 Wireless | page 30 |

What You Need to Begin

- A computer to use as a management station for initial configuration of the SonicWALL TZ 150 Wireless
- An Internet connection
- A Web browser for accessing the security appliance's Web-based management interface. The Web browser must support Java and HTTP uploads. Internet Explorer 5.0 or higher or Netscape Navigator 4.7 or higher are recommended.

1

Collecting Required Information

Internet Service Provider (ISP) Information

Collect the following information about your Internet service:

| If you connect via | You probably use | Please record |
|---|------------------|---|
| <ul style="list-style-type: none"> • Cable modem • DSL with a router | DHCP | You do not need to provide any Internet connection information. |
| <ul style="list-style-type: none"> • Home DSL • DSL modem | PPPoE | User name: _____ Password: _____ Note: Your ISP may require your user name in the format: <i>name@ISP.com</i> |
| <ul style="list-style-type: none"> • T1 • Static broadband • Cable or DSL with a static IP | Static IP | IP address: _____ Subnet mask: _____ Default gateway (router address): _____ Primary DNS: _____ Secondary DNS (optional): _____ |
| <ul style="list-style-type: none"> • Dial in to a server | PPTP | Server address: _____ User name: _____ Password: _____ |

Other Information

SonicWALL Management Interface Administrator Account

User name: admin

Password: password

These are the default settings, which you can modify.



2

Applying Power to the SonicWALL TZ 150 Wireless

1. Plug the power supply into the back of the security appliance and into an appropriate power outlet.



Warning: Only use a SonicWALL-approved 12V, 1.66A power supply.

The Power LED  on the front panel lights up green when you plug in the SonicWALL TZ 150 Wireless. The Test LED  lights up and may blink while the appliance performs a series of diagnostic tests. When the Test LED is no longer lit, the security appliance is ready for configuration.



If the Test LED remains lit after the SonicWALL TZ 150 Wireless has booted, disconnect the power to the security appliance for a few seconds and plug it back in to restart the unit.

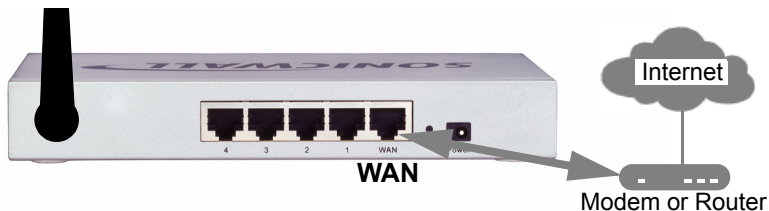
Note: For more trouble shooting information, refer to the [SonicOS Standard 3.0 Administrator's Guide](#).

3

Connecting the SonicWALL TZ 150 Wireless

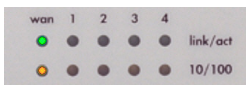
Connecting the Ethernet Cables

Connect the WAN Cable



1. Connect one end of an Ethernet cable to your Internet connection, such as a DSL modem or cable modem.
This cable may already be connected between your computer and your modem. If so, disconnect it from your computer, and leave it connected to the Internet.
2. Connect the other end of the cable to the **WAN** port on the back of your SonicWALL TZ 150 Wireless.

The **WAN** LEDs on the front panel light up indicating an active connection.



Connect the LAN Cable



1. Connect one end of another Ethernet cable to the computer you are going to use to manage the SonicWALL TZ 150 Wireless.
2. Connect the other end of the cable to port # 1 on the back of your SonicWALL TZ 150 Wireless.

The port # 1 LEDs on the front panel light up indicating an active connection.



4

Accessing the Management Interface

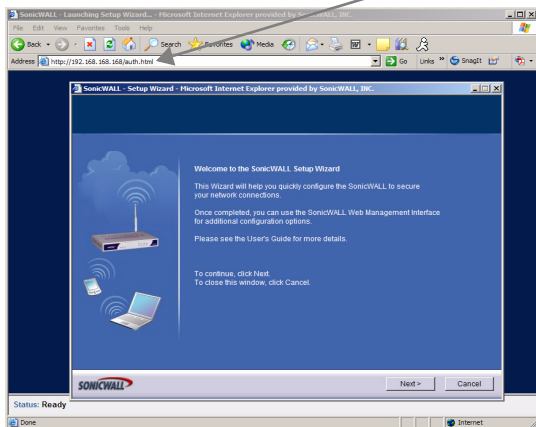
To access the Web-based management interface of the SonicWALL TZ 150 Wireless appliance, follow these three steps:

1. On the computer you have connected to port # 1, start your Web browser.

Alert: *Disable pop-up blocking software before accessing the SonicWALL management interface.*

Your Web browser must support Java and HTTP uploads. Current versions of Internet Explorer, Netscape Navigator, Mozilla, and Firefox are recommended.

2. Enter **192.168.168.168** in the **Location** or **Address** field.



3. The **SonicWALL Setup Wizard** launches and guides you through the configuration and setup of your security appliance.

If the SonicWALL Setup Wizard Does Not Appear

If you cannot connect to the SonicWALL TZ 150 Wireless appliance or the **Setup Wizard** does not display:

- Did you correctly enter the SonicWALL TZ 150 Wireless management IP address, **192.168.168.168**, in your Web browser?
- Is your computer running pop-up blocking software?
- Are the Local Area Connection settings on your computer set to obtain an IP address dynamically (DHCP)? If not, see *Procedure 9, "Connecting Computers to Your SonicWALL TZ 150 Wireless"* on page 27 for instructions on changing your Local Area Connection settings.
- Do you have the Ethernet cable connected to your computer and to port **1** on your SonicWALL TZ 150 Wireless?
- Some browsers may not launch the **Setup Wizard** automatically. In this case, log into the security appliance using "**admin**" as the user name and "**password**" as the password. After you log in, click the **Wizards** button on the **System > Status** page to launch the wizard.

Using the SonicWALL Setup Wizard

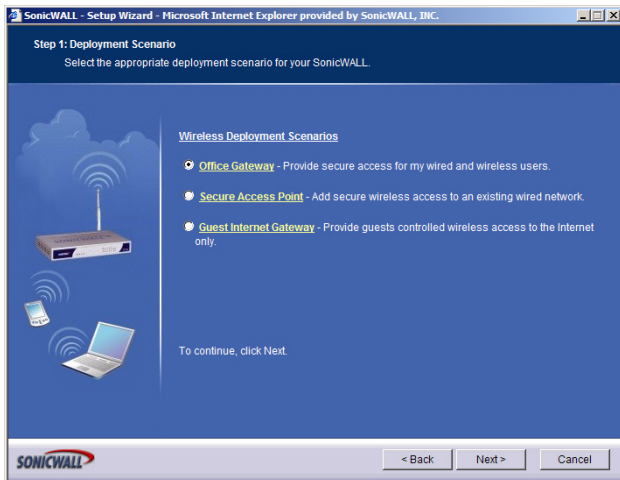
The SonicWALL **Setup Wizard** provides user-guided instructions for configuring your SonicWALL TZ 150 Wireless.

Note: It is important that you have collected any required ISP information before using the **Setup Wizard**. See the list in Procedure 1, “Collecting Required Information” on page 3.

Tip: If you do not know what type of Internet connection you have, contact your ISP. In addition, the SonicWALL **Setup Wizard** will attempt to detect your connection settings.

Welcome - Click **Next** to begin.

1. **Deployment Scenario** - Select the wireless deployment scenario that best matches your deployment requirements. Clicking on the deployment scenario link displays a diagram of the deployment to show how the scenario is best used.



This Getting Started Guide follows the procedure for setting up an Office Gateway deployment, which is a commonly used wireless deployment for LAN and WLAN to Internet connectivity. For instructions on setting up other deployments, refer to the [SonicOS Standard 3.0 Administrators Guide](#).

Select **Office Gateway** and click **Next**.

2. **Change Password** - Change the administrative password. This is the password for the **admin** account.

| | |
|---------------------|--|
| Old Password | Should be populated with the default password, <i>password</i> . |
| New Password | Enter your new password. |
| Confirm | Re-enter your new password. |

Note: *Keep your new password in a safe place. If you lose your password, you will have to reset the security appliance to factory settings and lose your configuration. For instructions on resetting your security appliance, refer to the [SonicOS Standard 3.0 Administrator's Guide](#).*

Click **Next**.

3. **Change Time Zone** - Set the **Time Zone** to your local time zone.

| | |
|--|---|
| Time Zone | Select the time zone for your location from the list. |
| Automatically adjust clock for daylight saving time | Check this setting if you live in an area that observes Daylight Saving Time. |

Note: *It is important that you set the time zone correctly before you register your SonicWALL TZ 150 Wireless.*

Click **Next**.

4. **WAN Network Mode** - The **Setup Wizard** automatically detects most networking modes. If it does not detect a networking mode, you may have a Static IP Address.

See *Procedure 1, "Collecting Required Information"* on page 3.

Confirm the selection or select the correct type of network connection for your network.

| | |
|------------------|--|
| Static IP | Select Static IP if you want to give the SonicWALL TZ 150 Wireless a specific, unchanging IP address. |
| DHCP | Select DHCP if your ISP assigns your computer a dynamic IP address. DHCP is commonly used with cable modems. |
| PPPoE | Select PPPoE if your ISP requires a username and password to establish a connection and assign a dynamic address. PPPoE is commonly used with DSL modems. |
| PPTP | Select PPTP if you dial into a specific server and log into a VPN to establish a connection. With PPTP, you can have either a static or dynamic IP Address. |

Click on the yellow link for a networking type to see a definition.

Click **Next**.

5. **WAN Network Mode** - The second WAN network mode screen configures your WAN settings for the selection you made in the previous screen.

Static IP

The **Setup Wizard** screen should display:

WAN Network Mode: NAT Enabled (Static IP)

| | |
|---|---|
| SonicWALL WAN IP Address | Enter a single, static IP address. This must be in the address range assigned to you by your ISP. |
| WAN Subnet Mask | Enter the subnet mask for your network, provided by your ISP. For example, 255.255.255.0. |
| Gateway (Router) Address | Enter the IP address of your Internet gateway, provided by your ISP. |
| DNS Server Address | Enter the IP address of the DNS server for your network, provided by your ISP. |
| DNS Server Address #2 (optional) | You can enter a secondary, back-up DNS server to use if the first one fails. |

Click **Next**.

DHCP

The **Setup Wizard** screen should display:

WAN Network Mode: NAT with DHCP Client

If you selected DHCP, you do not need to enter any WAN networking settings. The network settings are provisioned automatically from a DHCP server.

Click **Next**.

PPPoE

The **Setup Wizard** screen should display:

WAN Network Mode - NAT with PPPoE Client

| | |
|---|--|
| Obtain an IP Address Automatically | Select this if your ISP assigns you a dynamic IP address. |
| Use the following IP Address | Select this if your ISP has assigned you a static IP address, and enter the address. |
| PPPoE User Name | Enter the user name for your Internet account. Your ISP may require you to enter your username in e-mail address format, including “@” and the domain name, for example, <i>joe.user@sonicwall.com</i> |
| PPPoE Password | Enter the password for your Internet account. |
| Inactivity Disconnect (minutes) | Check this box if you want the SonicWALL TZ 150 Wireless to disconnect from the Internet if there is no traffic for the number of minutes you enter. |

Click **Next**.

PPTP

The **Setup Wizard** screen should display:

WAN Network Mode: NAT with PPTP Client

| | |
|-------------------------------|--|
| PPTP Server IP Address | Enter the address of the server you are connecting to. |
| PPTP User Name | Enter your network user name. |
| PPTP Password | Enter your network password. |

| | |
|---|--|
| Obtain an IP Address Automatically | Select this if the server assigns you a dynamic IP address. |
| Use the following IP Address | Check this if you have been given a static IP address, and fill in the following three fields. |
| SonicWALL WAN IP Address | Enter the static IP address for your connection. |
| WAN/DMZ Subnet Mask | Enter the subnet mask for your connection. |
| Gateway (Router) Address | Enter the address of your Internet Gateway. |

Click **Next**.

6. **LAN Settings** - The LAN Settings screen configures your LAN interface.

| | |
|--|---|
| SonicWALL LAN IP Address | Accept the default IP address or enter a new IP address of the LAN interface. Record the address: _____ |
| LAN Subnet Mask | Accept the default, or enter a subnet mask for your LAN. |
| Enable Windows Networking Support | Leave this option checked if you plan to have more than one Windows computer on your network. Windows Networking has no effect on computers with other operating systems. |

By default, your security appliance is configured with a LAN network IP address, **192.168.168.168**, and subnet mask, **255.255.255.0**, which works well for most installations. In most cases, leave the default LAN IP address and subnet mask unchanged.

Click **Next**.

7. **LAN DHCP Settings** - The LAN DHCP Settings screen allows you to select whether or not to use the DHCP Server in the SonicWALL TZ 150 Wireless to automatically distribute IP addressing information to computers and other network devices on your LAN.

| | |
|----------------------------------|--|
| Enable DHCP Server on LAN | Leave this checkbox checked to use the DHCP server in the SonicWALL TZ 150 Wireless appliance. Do not select this option if you already have a DHCP server on your network, or if you want to require your network clients to have static IP addresses. |
| LAN Address Range | If you enabled the DHCP Server, enter a range of IP addresses in the same subnet as the LAN IP address, or leave the default range unchanged. The default DHCP range will work for most installations |

Click **Next**.

8. **WLAN 802.11b/g Settings** - The WLAN 802.11b/g Settings screen allows you to configure your wireless network settings.

| | |
|---------------------|---|
| SSID | For security reasons, change this setting. Enter a unique name to identify the wireless connection. The SSID can contain up to 32 numbers and letters. |
| Radio Mode | Select the transmission standard to use. The default, Mixed , works for most office and home settings. |
| Country Code | Select the country where you are deploying this security appliance. This configures the channels used to comply with regulations in your country. |
| Channel | Select the broadcast channel you want the security appliance to use. The default, AutoChannel automatically detects the channel with the least interference. See “SonicWALL TZ 150 Wireless Security Appliance Regulatory Statement and Safety Instructions” on page 33 for information on authorized channels. |

Click **Next**.

9. **WiFiSec VPN Client User Authentication** - WiFiSec is a SonicWALL wireless security implementation that uses an IPSec VPN to secure wireless network connections. The WiFiSec screen allows you to create a VPN user for your wireless network.

| | |
|-------------------------|---------------------------------------|
| User Name | Enter a user name for the VPN user. |
| Password | Enter a unique password for the user. |
| Confirm Password | Re-enter the password. |

Note: You can add additional users in the security appliance's Management Interface. Refer to the [SonicOS Standard 3.0 Administrator's Guide](#) for instructions on adding users.

Click **Next**.

10. **Wireless Guest Services** - Allows guest users to connect to the Internet without any access to your private network.

| | |
|---------------------------------------|---|
| Enable Wireless Guest Services | Check to enable Wireless Guest Services on your network. |
| Account Name | Enter the account name your guest users must use to log into Wireless Guest Services. |
| Account Password | Enter a password for the guest account. |
| Confirm Password | Re-enter the password. |
| Account Lifetime | Specify the length of time this account may exist before you need to regenerate it. |
| Session Lifetime | Specify the length of time a guest user may be logged in. |
| Comment | A brief description of the guest account. |

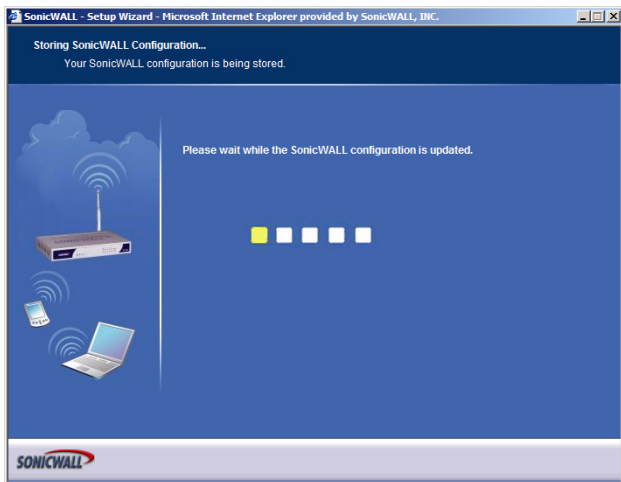
Note: You can add additional guest accounts in the security appliance's Management Interface. Refer to the [SonicOS Standard 3.0 Administrator's Guide](#).

Click **Next**.

11. **SonicWALL Configuration Summary** - Displays your network configuration information. Confirm that the settings displayed match the information you collected in *Procedure 1: "Collecting Required Information" on page 3*.

Click **Apply** to apply your settings to the security appliance. If you click **Cancel**, no settings will be applied to the security appliance.

The **Storing SonicWALL Configuration** screen displays during this process.



Setup Wizard Complete - Your SonicWALL TZ 150 Wireless is now successfully configured for LAN, Wireless, and Internet access.

Click **Restart** to complete the configuration process. The security appliance will reboot, which may take a minute. When the Test LED is no longer lit, the security appliance is ready for network traffic.

6

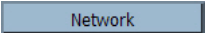

Testing Your Connection

1. After the SonicWALL TZ 150 Wireless reboots, and the login page reappears, open another Web browser, and navigate to: <http://www.sonicwall.com>.

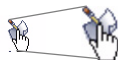
If you can view the SonicWALL home page, you have configured your SonicWALL TZ 150 Wireless correctly.

2. If you cannot view the SonicWALL home page, try a second URL.

If you still cannot view a Web page, try one of these solutions:

- Restart your management station—it may need to restart to accept new network settings from the DHCP server in the security appliance.
- If you selected DHCP for your WAN settings, you may need to specify a host name for your connection:
 - a. Check with your ISP to see if a host name is required.
 - b. Go to *Procedure 4, “Accessing the Management Interface” on page 6*, and use the LAN IP address you set in *Procedure 5, Step 6: “LAN Settings” on page 13*.
 - c. Log in as “admin” with your administrative password.
 - d. In the menu on the left, click .
 - e. In the Interfaces table, click the configure icon  in the **WAN** line.

WAN 10.0.202.84 255.255.0.0 100 Mbps, half duplex



- f. In the **WAN Properties** window, enter the host name and click **OK**.
- Use the **Setup Wizard** again to reconfigure your network settings:
 - a. Go to *Procedure 4, “Accessing the Management Interface” on page 6*, and use the LAN IP address you set in *Procedure 5, Step 6: “LAN Settings” on page 13*.
 - b. Log in as “admin” with your administrative password.
 - c. Click the **Wizards** button in the top, right corner of the management interface to restart the wizard.
 - d. Select **Setup** and click **Next** to start the **Setup Wizard**.



Registering Your SonicWALL TZ 150 Wireless

Once you've established your Internet connection, it is recommended you register your SonicWALL security appliance at mySonicWALL.com. Registering your SonicWALL security appliance provides the following benefits:

- Activate 30-day subscriptions to SonicWALL's Gateway Anti-Virus/Intrusion Prevention Service, Content Filtering Service, and Network Anti-Virus Service
- Activate SonicWALL security service licenses
- Access SonicOS firmware updates
- Get SonicWALL technical support

Before You Register

Make sure the time and DNS settings on your security appliance are correct when you register the device. You should have set these settings in *Procedure 5: "Using the SonicWALL Setup Wizard", Step 3: "Change Time Zone"* on page 9 and *Step 5: "WAN Network Mode"* on page 11.

You need a mySonicWALL.com account to register your security appliance. You can create a new mySonicWALL.com account directly from the SonicWALL management interface.

If you already have a mysonicWALL.com account, go to *"Registering Your SonicWALL TZ 150 Wireless"* on page 21 to register your security appliance.

Note: *mySonicWALL.com registration information is not sold or shared with any other company.*

Creating a mySonicWALL.com Account

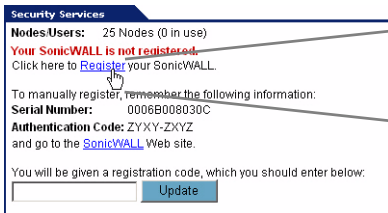
Creating a mySonicWALL.com account is fast, simple, and FREE. Simply complete an online registration form in the SonicWALL TZ 150 Wireless management interface.

If you already have a mysonicWALL.com account, go to “Registering Your SonicWALL TZ 150 Wireless” on page 21 to register your appliance.

1. If you are not logged into the SonicWALL TZ 150 Wireless management interface, log in with the username **admin** and the administrative password you set in the **Setup Wizard**.
2. If the **System > Status** page is not displayed in the management interface, click **System** in the left-navigation menu.

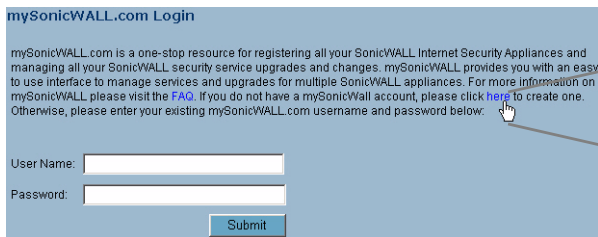


3. On the **System > Status** page, in the **Security Services** section, click the **Register** link.



ALL is in
[Register](#) y
rister

4. In the **mySonicWALL.com Login** page, click the **here** link in “**If you do not have a mySonicWALL account, please click here to create one.**” The mySonicWALL.com account form is displayed.



mySonicWALL.com Login

mySonicWALL.com is a one-stop resource for registering all your SonicWALL Internet Security Appliances and managing all your SonicWALL security service upgrades and changes. mySonicWALL provides you with an easy to use interface to manage services and upgrades for multiple SonicWALL appliances. For more information on mySonicWALL please visit the [FAQ](#). If you do not have a mySonicWall account, please click [here](#) to create one. Otherwise, please enter your existing mySonicWALL.com username and password below.

User Name:

Password:



5. In the **MySonicWall Account** page, enter in your information in the **Account Information, Personal Information** and **Preferences** fields. All fields marked with an asterisk (*) are required fields.
- Note:** Remember your username and password to access your mySonicWALL.com account.
6. Click **Submit** after completing the **MySonicWALL Account** form.
7. When the mySonicWALL.com server has finished processing your account, you will see a page saying that your account has been created. Click **Continue**.

Congratulations. Your mySonicWALL.com account is activated.

Registering Your SonicWALL TZ 150 Wireless

1. If you are not logged into the SonicWALL TZ 150 Wireless management interface, log in with the username **admin** and the administrative password you set in the **Setup Wizard**.
2. If the **System > Status** page is not displaying in the management interface, click **System** in the left-navigation menu.



3. On the **System > Status** page, in the **Security Services** section, click the **Register** link. The **mySonicWALL.com Login** page is displayed.

A screenshot of the "mySonicWALL.com Login" page. The page has a light blue background. At the top, the text "mySonicWALL.com Login" is displayed. Below this, a paragraph of text explains the service: "mySonicWALL.com is a one-stop resource for registering all your SonicWALL Internet Security Appliances and managing all your SonicWALL security service upgrades and changes. mySonicWALL provides you with an easy to use interface to manage services and upgrades for multiple SonicWALL appliances. For more information on mySonicWALL, please visit the FAQ. If you do not have a mySonicWall account, please click here to create one. Otherwise, please enter your existing mySonicWALL.com username and password below." Below the text are two input fields: "User Name:" with the text "myaccount" entered, and "Password:" with a series of dots. A "Submit" button is located below the password field.

4. Enter your mySonicWALL.com account username and password in the **User Name** and **Password** fields, then click **Submit**.
5. The next several pages inform you about SonicWALL's Security Services:
 - **Gateway Anti-virus** - Delivers real-time virus protection for your entire network
 - **Complete Anti-virus** - Delivers desktop and server anti-virus protection
 - **Premium Content Filtering Service** - Enhances productivity by limiting access to objectionable Web content
 - **Intrusion Prevention Service** - Protects your network against worms, Trojans and application layer attacks

Click **Continue** on each page.

6. At the top of the **Product Survey** page, enter a “friendly name” for your SonicWALL content security appliance in the **Friendly Name** field. The friendly name allows you to easily identify your SonicWALL content security appliance in your mySonicWALL.com account.
7. Please complete the Product Survey. SonicWALL uses this information to further tailor services to fit your needs.

Note: SonicWALL Product Survey information is not sold or shared with any other company.

8. Click **Submit**.
9. When the mySonicWALL.com server has finished processing your registration, you will see a page informing you that your SonicWALL TZ 150 Wireless appliance is registered. Click **Continue**, and the **System > Licenses** page is displayed showing the available security services. You can activate the services from this page now or at any time in the future.

Congratulations

Your SonicWALL TZ 150 Wireless is now fully operational.

You can continue with this Getting Started Guide to:

- Set up computers on your network for secure wired or wireless Internet access.
- Mount your security appliance on a wall or to any vertical surface.

8

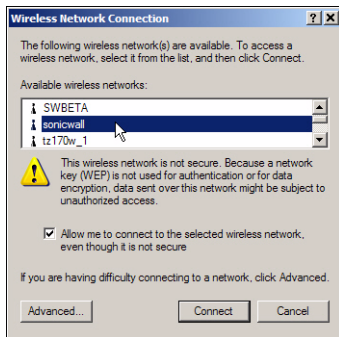
Connecting Wireless Clients to the SonicWALL TZ 150 Wireless

For wireless clients to connect to your SonicWALL TZ 150 Wireless appliance, they need:

- A wireless network card installed and configured for the security appliance's service set identifier (SSID), which you set up in *Procedure 5: "Using the SonicWALL Setup Wizard", Step 8: "WLAN 802.11b/g Settings" on page 14.*
- SonicWALL Global VPN Client (GVC) or SonicWALL Global Security Client (GSC) installed and configured for a secure wireless connection

Connecting to the Wireless Network

You connect to the wireless network according to the requirements of your client operating system. Your wireless client may automatically detect and display the security appliance's SSID in a list of available wireless networks or you may need to manually configure your wireless card with the security appliance's SSID.



Establishing Secure Wireless Connections

For a wireless client to securely connect to the SonicWALL TZ 150 Wireless using WiFiSec, the SonicWALL Global VPN Client (GVC) or SonicWALL Global Security Client (GSC) must be installed and configured. Installing and configuring SonicWALL GVC involves the following procedures:

- “Installing the SonicWALL GVC or SonicWALL GSC Using the Setup Wizard” on page 24
- “Creating an Office Gateway Connection Profile Using the New Connection Wizard” on page 25
- “Establishing a WiFiSec VPN Connection Using the WLAN GroupVPN Policy” on page 26

Installing the SonicWALL GVC or SonicWALL GSC Using the Setup Wizard

If you do not already have SonicWALL GVC or SonicWALL GSC installed:

1. Insert the SonicWALL Resource CD that came with your security appliance into your computer.
2. Open the **Software** folder on the SonicWALL Resource CD.
3. Open the **SonicWALL Global VPN Client** folder.
4. Open the **GVC Zip** file.
5. Launch **setup.exe**.
6. Follow the instructions in the **GVC Setup Wizard** to install SonicWALL GVC.

Note: SonicWALL GVC is free to use for WiFiSec secured wireless connections. For remote VPN access through a WAN port, you must have a GVC Client License. For complete product documentation on SonicWALL GVC or SonicWALL GSC, see your Resource CD or visit the SonicWALL Web site at:

<http://www.sonicwall.com/services/documentation.html>.

Tip: You can download the latest GVC installer at SonicWALL's product Web site at:

<http://help.mysonicwall.com/applications/vpnclient>.

Creating an Office Gateway Connection Profile Using the New Connection Wizard

1. In your Windows Start Menu, select **Start > Programs > SonicWALL Global VPN Client**. The first time you open SonicWALL GVC, the **New Connection Wizard** automatically launches.

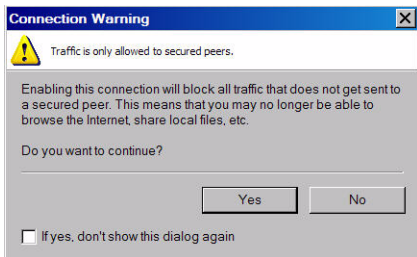


- If the **New Connection Wizard** does not display, click the **New Connection Wizard** icon on the far left side of the toolbar to launch it. Click **Next**.
2. In the **Choose Scenario** page, select **Office Gateway**. Click **Next**.
 3. In the **Completing the New Connection Wizard** page select any of the following options:
 - Select **Create a desktop shortcut to this connection**, if you want to create a shortcut icon on your desktop for this VPN connection.
 - Select **Enable this connection when the program is launched**, if you want to automatically establish this VPN connection when you launch the SonicWALL Global VPN Client.
 4. Click **Finish**. The new VPN connection policy appears in the **SonicWALL Global VPN Client** window. If you selected to enable the connection automatically, it will display the **Enter Username/Password** screen immediately.

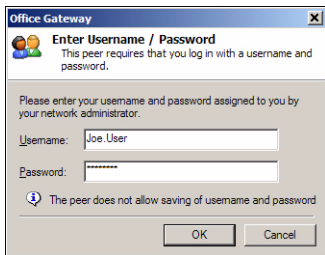
Establishing a WiFiSec VPN Connection Using the WLAN GroupVPN Policy

1. In the **SonicWALL Global VPN Client** window, double-click the **Office Gateway** profile.

Depending on your configuration, the **Connection Warning** dialog box may display.



2. Click **Yes** to continue.
3. In the **Enter Username/Password** dialog box, enter the authentication credentials for the user configured on the SonicWALL security appliance's local user database for access to the **WLAN GroupVPN**, such as WiFiSec user you created in the **Setup Wizard**.



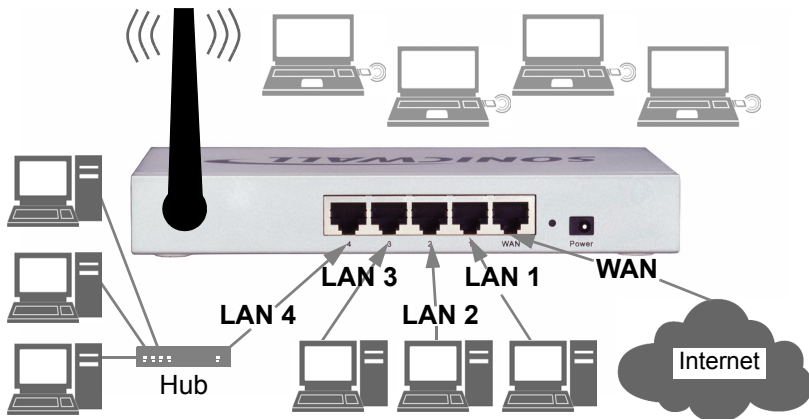
4. Click **OK**. You now have secure wireless access.

Note: *The status in the GVC window will display **Connected** when the connection is established. If it displays **Enabled**, you are not yet authenticated with the VPN.*

9

Connecting Computers to Your SonicWALL TZ 150 Wireless

You can attach up to ten computers in any combination of wired and wireless connections to your SonicWALL TZ 150 Wireless.



Configuring Computers for Your Network with DHCP

If you enabled the DHCP Server in the **Setup Wizard**, each computer on your network must be configured to obtain its IP address dynamically. The following steps provide instruction on changing the Local Area Connection settings for four popular versions of Microsoft Windows.

- Windows XP
- Windows 2000
- Windows NT
- Windows 98

Note: If you are not using DHCP, refer to the [SonicWALL SonicOS Standard 3.0 Administrator's Guide](#).

Windows XP

1. Open the **Local Area Connection Properties** window (**Start > Settings > Network Connections** on most versions of Windows XP).
2. Right click on the **Local Area Connection** icon, and select **Properties**.
3. In the list of connection items, select **Internet Protocol (TCP/IP)** and click **Properties**.
4. Select **Obtain an IP address automatically**.
5. Select **Obtain DNS Server automatically**.
6. Click **OK**, and then **OK** again to apply the settings.

Windows 2000

1. From your Windows **Start** menu, select **Settings**.
2. Open **Network and Dial-up Connections**.
3. Right click on the **Local Area Connection** icon, and select **Properties**.
4. Highlight **Internet Protocol (TCP/IP)** and click **Properties**.
5. Select **Obtain an IP address automatically**.
6. Select **Obtain DNS Server automatically**.
7. Click **OK**, and then **OK** again to apply the settings.

Windows NT

1. From the **Start** list, highlight **Settings** and then select **Control Panel**.
2. Open **Network**.
3. Double-click **TCP/IP** in the **TCP/IP Properties** window.
4. Select **Obtain an IP address automatically**.
5. Click **DNS** at the top of the window.
6. Select **Obtain DNS Server automatically**.
7. Click **OK**, and then click **OK** again.
8. Restart the computer to apply the settings.

Windows 98

1. In the **Start** menu, select **Settings** and then select **Control Panel**.
2. Open **Network**.
3. Double-click **TCP/IP** in the **TCP/IP Properties** window.
4. Select **Obtain IP Address automatically**.
5. Click **DNS Configuration**.
6. Select **Obtain DNS Server automatically**.
7. Click **OK**, and then click **OK** again.
8. Restart the computer to apply the settings.

Mounting the SonicWALL TZ 150 Wireless

You can mount your SonicWALL TZ 150 Wireless on a wall or any vertical surface. Use the template on the next page as a guide for placing the mounting screws.

1. Using the template on the next page, attach two screws to the surface where you want to mount the security appliance.

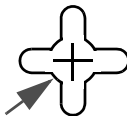
The mounting screws should have a head between 3/16" and 1/4" in diameter.

The mounting screws should stick approximately 1/8" out from the surface.

2. Slide the slots in the back of the SonicWALL TZ 150 Wireless over the heads of the mounting screws and then slide the security appliance down to secure it in place.

SonicWALL TZ 150 Wireless Mounting Template

Align front
corner here

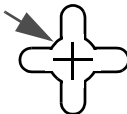


Attach mounting screw here

Considerations for Mounting the SonicWALL TZ 150 Wireless

- Mount in a location away from direct sunlight and sources of heat. A maximum ambient temperature of 104° F (40° C) is recommended.
- Route cables away from power lines, fluorescent lighting fixtures, and sources of noise such as radios, transmitters, and broadband amplifiers
- Ensure that no water or excessive moisture can enter the unit.
- Allow unrestricted airflow around the unit and through the vents on the side of the unit. A minimum of 1 inch (25.44mm) clearance is recommended.

Attach mounting screw here



SonicWALL TZ 150 Wireless Security Appliance Regulatory Statement and Safety Instructions

| Regulatory Model/Type | Product Name |
|-----------------------|-----------------|
| APL15-03A | TZ 150 Wireless |

Note: Detailed regulatory information can be found in the electronic file, “SonicWALL_TZ_150_Wireless_Regulatory_Statement.pdf,” located on the SonicWALL Resource CD provided with the unit.

Cable Connections

All Ethernet cables are designed for intra-building connection to other equipment. Do not connect these ports directly to communication wiring or other wiring that exits the building where the SonicWALL TZ 150 Wireless is located.

Power Supply Information Models APL15-03A

If you need to order a power supply for your SonicWALL TZ 150 Wireless, contact SonicWALL Technical Support at 408-752-7819 for a replacement. This product should only be used with a UL listed power supply marked “Class 2” or “LPS”, with an output rated 12 VDC, minimum 1.66 A.

Considerations for Mounting the APL15-03A

See the “SonicWALL TZ 150 Wireless Mounting Template” on page 31.

North American Authorized Channels

SonicWALL declares that the APL15-03A (FCC ID: QWU-03A) (IC: 4408A-03A) when sold in US or Canada is limited to CH1~CH11 by specified firmware controlled in the USA.

Glossary of Networking Terms

- **Default Gateway** - A device on an Internet network that forwards packets to another network.
- **DHCP** - Dynamic Host Configuration Protocol allocates IP addresses to computers on the network automatically without assigning a computer a static (fixed) IP address.
- **DNS** - A Domain Name System is a hierarchical naming system that resolves a domain name with its associated IP address. A DNS server looks up the name of a computer and finds the corresponding IP address. This allows users to access hosts using friendly text-based names instead of IP addresses. These names are called fully qualified domain names (FQDN).
- **IP Address** - An Internet Protocol Address is a thirty-two bit number that identifies a computer or other resource on the Internet or on any TCP/IP network. The number is usually expressed as four numbers from 0 to 255 separated by periods, for example, 172.16.31.254.
- **ISP** - An Internet Service Provider is the company that provides a connection to the Internet.
- **LAN** - A Local Area Network is typically a group of computers located at a single location, and is commonly based on the Ethernet architecture.
- **NAT** - Network Address Translation is an Internet standard that allows your local network to use private IP addresses, which are not recognized on the Internet. The IP address used for the router is the only routable IP address. The computers behind the NAT can access the Internet through the router, but Internet users cannot access the computers behind the router.
- **Packet** - A unit of information transmitted over the Internet or within any TCP/IP network. Packets have a header, which contains information about the source, destination, and protocol to be used for the data, and a body, which contains the data being transmitted.
- **PPPoE** - The Point to Point Protocol over Ethernet supports the transmission of network packets over an analog phone line.

- **Private IP Address** - An IP address for a resource in your network that is not known or published outside the zone (for example LAN) where it is located.
- **Public IP Address** - An IP address for a resource in your network that is published outside your network to the WAN.
- **Router** - A device that routes data between networks through IP address information in the header of the IP packet. A router forwards packets to other routers until the packets reach their destination. The Internet is the largest example of a routed network.
- **SSID** - A Service Set Identifier is a unique string of characters that identifies a wireless network
- **Subnet** - A portion of a network. Each subnet within a network shares a common network address and is uniquely identified by a subnetwork number.
- **Subnet Mask** - A 32-bit number used to separate the network and host sections of an IP address. A subnet mask subdivides an IP network into smaller pieces. An example of a subnet mask might be 255.255.255.248 for subnet with only eight IP addresses.
- **TCP/IP** - Transmission Control Protocol/Internet Protocol is the basic communication protocol of the Internet. It supports sending information in packets, and identifies each device with a unique numeric IP address.
- **VPN** - A Virtual Private Network is a virtual network that encrypts data and sends it privately over the Internet to protect sensitive information.
- **WAN** - A Wide Area Network is a geographically distributed network composed of multiple networks joined into a single large network. The Internet is a global WAN.
- **WLAN** - A Wireless Local Area Network is a LAN with wireless connections instead of physical connections.

Copyright Notice

© 2005 SonicWALL, Inc.

All rights reserved.

Under the copyright laws, this manual or the software described within, can not be copied, in whole or part, without the written consent of the manufacturer, except in the normal use of the software to make a backup copy. The same proprietary and copyright notices must be affixed to any permitted copies as were affixed to the original. This exception does not allow copies to be made for others, whether or not sold, but all of the material purchased (with all backup copies) can be sold, given, or loaned to another person. Under the law, copying includes translating into another language or format.

Specifications and descriptions subject to change without notice.

Trademarks

SonicWALL is a registered trademark of SonicWALL, Inc.

Microsoft Windows 98, Windows NT, Windows 2000, Windows XP, Windows Server 2003, Internet Explorer, and Active Directory are trademarks or registered trademarks of Microsoft Corporation.

Netscape is a registered trademark of Netscape Communications Corporation in the U.S. and other countries. Netscape Navigator and Netscape Communicator are also trademarks of Netscape Communications Corporation and may be registered outside the U.S.

Adobe, Acrobat, and Acrobat Reader are either registered trademarks or trademarks of Adobe Systems Incorporated in the U.S. and/or other countries.

Other product and company names mentioned herein may be trademarks and/or registered trademarks of their respective companies and are the sole property of their respective manufacturers.



SonicWALL, Inc.

1143 Borregas Avenue
Sunnyvale, CA 94089-1306

T: +1 408.745.9600
F: +1 408.745.9300

www.sonicwall.com

© 2004 SonicWALL, Inc. SonicWALL is a registered trademark of SonicWALL, Inc. Other product and company names mentioned herein may be trademarks and/or registered trademarks of their respective companies. Specifications and descriptions subject to change without notice.

P/N 232-000579-00
Rev A 01/05

