

# SINCLAIR

equipment company

## *Mambo Surface Prep Operating Manual*

*Read before use and keep safe*



(800) 624-2408 (530) 626-9386 Fax (530) 626-5144  
6686 Merchandise Way Diamond Springs, Ca 95619  
[www.sineqco.com](http://www.sineqco.com)

## **Table of Contents**

1.0	Technical Data	Page 3
2.0	Safety	Page 3
3.0	Safety Instructions	Page 3
4.0	Maintenance	Page 5
5.0	Use	Page 7
6.0	Vacuum Unit	Page 7
7.0	Trouble Shooting	Page 8
8.0	Spare Parts/Schematics	Page 9

## 1.0 Technical data/technical description

Power supply	110V 50 Hz
Power consumption	2300W
No-load speed	100 – 400 Strokes/min
Sound pressure level	56 dB(A)
Sound energy level	69 dB(A)
Hand/Arm-Vibration	< 4,5 m/s <sup>2</sup>
Weight	155 lbs

Comes with: Mambo Surface Prep, safety goggles and tool kit.

## 2.0 Safety

The Sinclair Mambo Surface Prep is state of the art designed and meets all standard safety requirements.

## 3.0 Safety Instructions

Disconnect the power supply before any maintenance is carried out. Use only recommended mounting discs and brushes. The mounting discs must have a plain surface. Use only genuine Sinclair discs and brushes. Other parts could affect the safety of the machine.

Always use the safety – and suction ring. Otherwise parts of the sub-floor may be cast out and endanger other persons.

Always lock the additional weight with the screw nuts. Use only the genuine Sinclair weight. **DO NOT USE ANY OTHER WEIGHTS!**

Maintenance should be undertaken only by qualified personnel. Use only genuine Sinclair parts.

Use only appropriate detergent liquids.

Check the power cord and the plug before starting. Both of them must be in perfect condition, the insulation must not be damaged. Have damaged insulation repaired at once, before starting the machine.

Otherwise this may result in considerable danger to the user.



## Speed Control

For your own safety start work always at low speed, and then increase the speed. This is especially important, if the sub-floor condition or the discs used are not well known.

**CAUTION!!! Always wear ear and eye protectors! CAUTION!!!**

Using this machine without ear and eye protectors may jeopardize or harm your health. It may harm especially your ears and increase the risk of an accident.

**The user and any person within range should always use ear protectors!**

**PLEASE READ DETAILED SAFETY INSTRUCTIONS ON COLORED SHEET BEFORE USING MACHINE!**

### **3.1 Introduction**

This operating manual should be used to receive the maximum benefit from your Mambo Surface Prep. Following these instructions will both extend the life of your machine and reduce repair costs.

Please ensure that any user of the machine is familiar with these instructions before work begins.

### **3.2 Danger while working with the machine**

The Mambo Surface Prep is designed to the highest technical standards. Incorrect use can be dangerous!

Use this machine only:

- **As instructed in this operating manual.**
- **With the machine in perfect working order.**

Disturbances that could impair safety have to be eliminated at once.

### **3.3 Restriction of use**

The Mambo Surface Prep is exclusively for wet-cleaning and polishing of resilient and textile floor coverings, and for grinding and milling pavement and leveling compounds in dry environments. It should not be used for any other purpose. Sinclair Equipment Company cannot be held responsible for any damage or loss caused by incorrect use.

### 3.4 Genuine Spare Parts

Spare parts and accessories are manufactured uniquely for the Mambo Surface Prep. It must be emphasized that parts obtained from unauthorized sources must not be used.

Sinclair Equipment Company cannot be held responsible for the performance of or any damage arising from the use of machines in which genuine spare parts have not been used.

This is particularly important with milling discs.

### 4.0 Maintenance

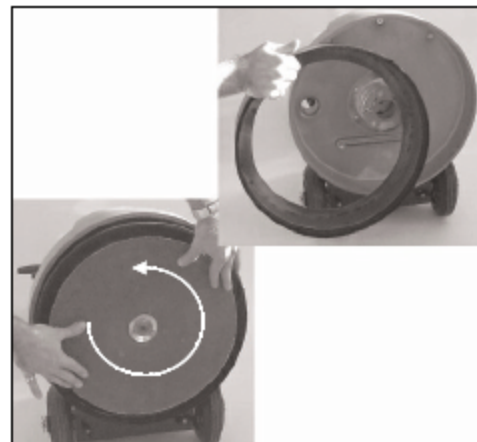
The Mambo Surface Prep is virtually maintenance free. The roller bearings and gear box need not be lubricated.

### 5.0 Use

#### Inserting the safety and suction ring

Lay the machine down on the handle. Thus the support of the discs is accessible.

- Insert safety ring
- Mount at once a disc to fix the suction ring



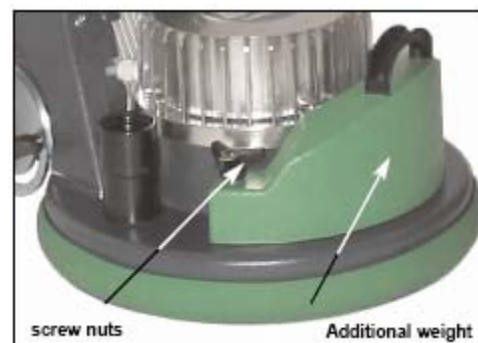
#### Assembly of mounting discs, pads and brushes

Lay the machine down on the handle. Thus the support of the discs is accessible. Put the mounting disc on the actuation and lock it by turning anti-clockwise.

#### Mounting the additional weight

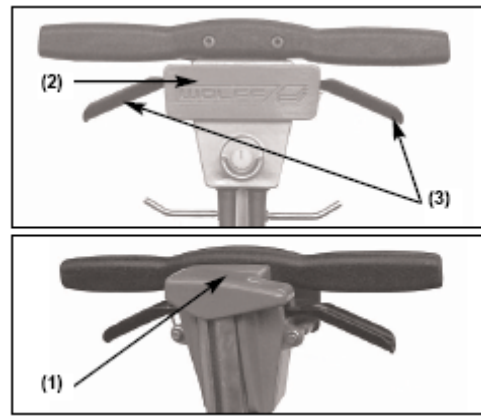
Always lock the additional weight with the screw nuts. Use only the genuine Sinclair weight.

**Do not use any other weights! This may overstress the machine.**



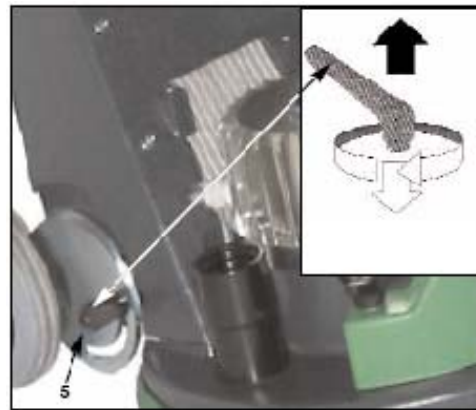
## Use:

- Mount discs or brushes as described above.
- Put the handle in working position with the big lever (1) at the back.
- We recommend to position the hand grip to the height of the users hip.
- Lift the handle slightly, to make sure the machine stands horizontally.
- Keep the safety switch (2) pressed.
- Switch on the machine with one of the levers (3) located beneath the grip.
- Release switch (2).



**Note:** lever can only be actuated, if the handle is not in vertical position. This is a safety feature! The user cannot control the machine with the vertical handle. After switching on the machine, the handle will move shortly to the right.

If the transportation wheels are in lifted position, the direction in which the machine moves, is controlled by lifting or lowering the grip. The more you lift or lower the grip, the faster the machine runs to the corresponding direction.



- Lifting the machine: machine runs to the right.
- Lowering the machine: machine runs to the left.

If you feel unsafe or cannot control the machine, just release lever (3). The machine will stop at once. If you have carried out some training, you will be able to operate the machine with one hand.

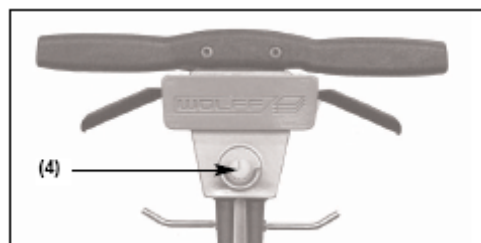
If the transportation wheels are lowered to the floor, the machine is stabilized and easier to control.

- Lifting and lowering of the handle is no more necessary.
- The machine has to be in a level position. The wheels have to be fixed accordingly.

By loosening the release handle (5), the wheels can be put in upper and lowered position.

## Speed control:

Adjust the speed of the discs with switch (4). Turning clock-wise increases the speed, turning anti-clockwise decreases the speed. The optimal speed is dependent on the disc used and the sub-floor.



The table below is meant as a guiding principle for the user. Always test the optimum speed in each case. Always start at low speed and then increase the speed.

Speed	Use	Recommended Disc
160-200	Grinding screed and leveling compounds	Sand paper
200-300	Grinding parquet, removing leveling compounds and adhesive residues	Carbide grinding disc and Milling disc
300-400	Removing leveling compounds	Milling disc

**Always remove discs after work.**

**Always disconnect the power cord after work or when leaving the machine.**

### Transportation

For transportation, fold the handle forwards.

For carrying the machine, use the grips at the front and at the back.

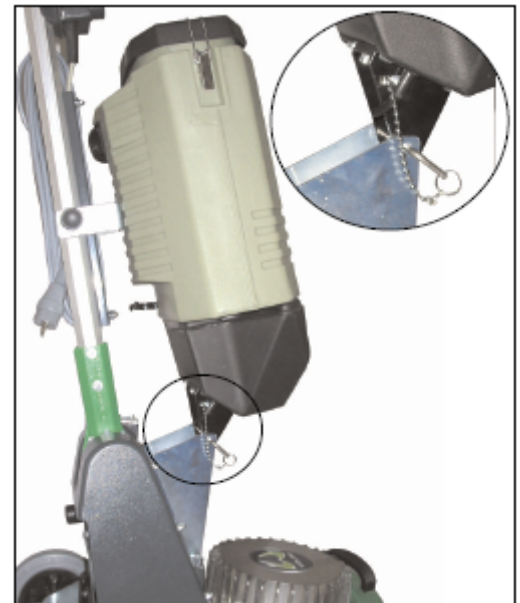


## 6.0 Vacuum Unit for the Mambo Surface Prep

### Mounting the Vacuum Micropac

Assemble the vacuum unit from the front of the Handle of the machine.

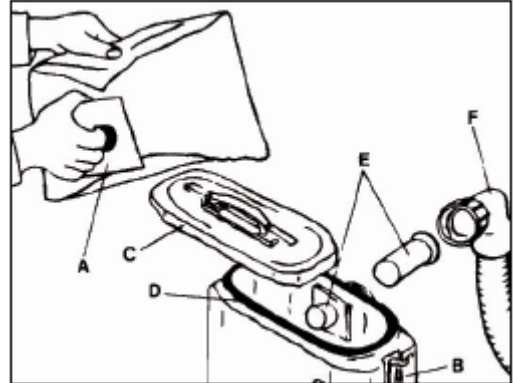
- Insert vacuum into the lower support
- Turn vacuum at the top against the handle. Engage fixing pin.
- Fasten hose to the vacuum by turning clockwise.
- Attach hose to the outlet spigot of the machine.



## Mounting or changing the paper bags of the Vacuum Micropac Unit

Paper bags are used for the vacuum unit Micropac.  
Replacement paper bags, 20 piece, Item # M13498.

- Release the 2 snap fasteners (B) and remove lid (C).
- Ensure inner cloth filter is clean.
- Ensure rubber molding (D) is firmly fitted around top rim of container.
- Gently open new dust bag and place in vacuum container. Slide flange (A) of the dust bag over inlet spigot (E) until secure.
- Replace and secure lid with 2 snap fasteners.



To facilitate the removal of a full dust bag, tube (E) may be withdrawn from the vacuum unit container having firstly removed elbow connector (F).

### 7.0 Troubleshooting

Trouble	Eventual Cause	Elimination
Machine does not start	Power supply disconnected Blown fuse Defective cable or plug	Have a machine repaired by a qualified electrician, resp. change parts
Switch-on lever cannot be actuated	Safety lever can only be actuated, if handle not vertical	Lower the handle of the machine
Machine stops	Lamp flashes fast Overload protection responds	Power plug disconnect Wait some minutes Switch the machine on again

### 8.0 Schematic/Parts List

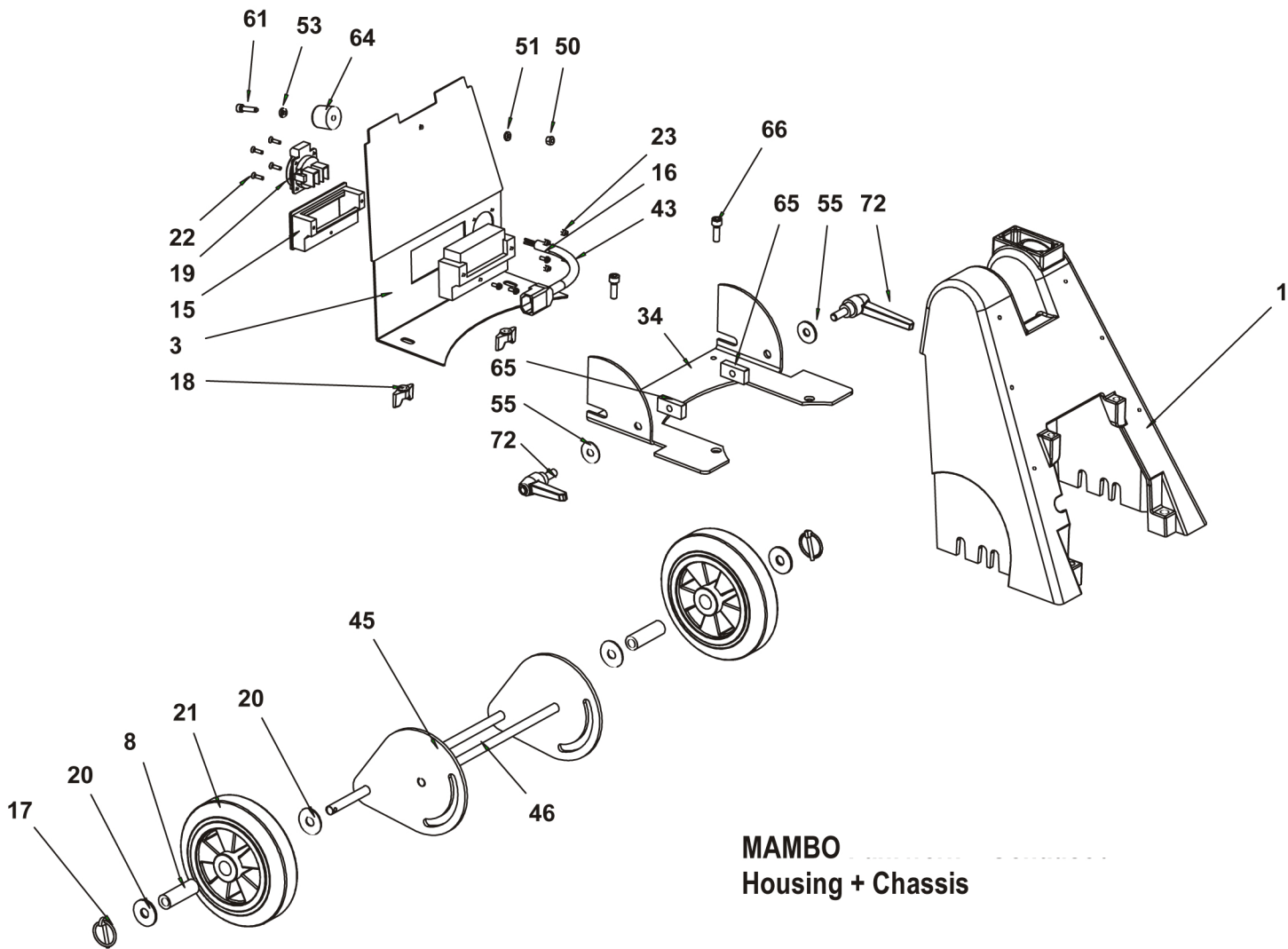
Schematic #	Pieces	Description	Part #
1	1	Housing	017830
2	1	Disc cover	037933



3	1	Back panel	037935
4	1	Support chain wheel	017872
5	1	Handle support	015404
6	1	Additional weight	038311
7	2	Cylindrical screw M10 x 70	018298
8	2	Wheel hub	017922
9	2	Square nut	017605
10	2	Counter Sink Screw M8 x 14	017698
11	1	Cylindrical screw M4 x 12	018284
12	1	Lever (handle adjustment)	014648
13	1	Handle mounting	017925
14	1	Chain wheel	016922
15	1	Recessed grip	017594
16	3	Oval head screw M4 x 10	014804
17	2	Split pin	014888
18	2	Thumb nut	016995
19	1	Power socket	014653
20	4	Washer	017637
21	2	Wheel	014645
22	4	Counter Sink Screw M4 x 16	017702
23	4	Hexagon nut	014831
24	1	Counter sunk screw M8 x 50	017631
25	2	Cylindrical screw M3 x 30	017744
26	2	Stop nut	017768
27	2	Washer	014829
28	2	Hexagon nut	014817
29	2	Dowel pin	018058
30	2	Washer M8	014860
31	2	Hexagon bolt	014775
32	1	Rubber washer	018624
33	1	Motor	037293
34	1	Chassis	037957
35	1	Electronics	038287
36	2	Handle	037940
37	3	Cylindrical screw M8x20	014734
43	1	Cable	037956
45	1	Axle	037967
46	1	Chassis	037958
49	9	Cylindrical screw M6 x 20	014730
50	6	Stop nut M6	014815
51	7	Washer	014827
52	4	Cap nut M6	017728
53	13	Washer M6	014859
54	4	Tallow-drop screw	017680
55	2	Washer	018236
56	2	Cylindrical screw M10 x 20	018301
57	2	Washer M10	014861
58	2	Locking screw M10 x 80	014789
59	1	Holding device electronics	037963 or 037962
61	1	Cylindrical screw M6 x 25	014731
64	1	Cache	016138
65	2	Nut M10	038290
66	2	Cylindrical screw M8 x 25	014735

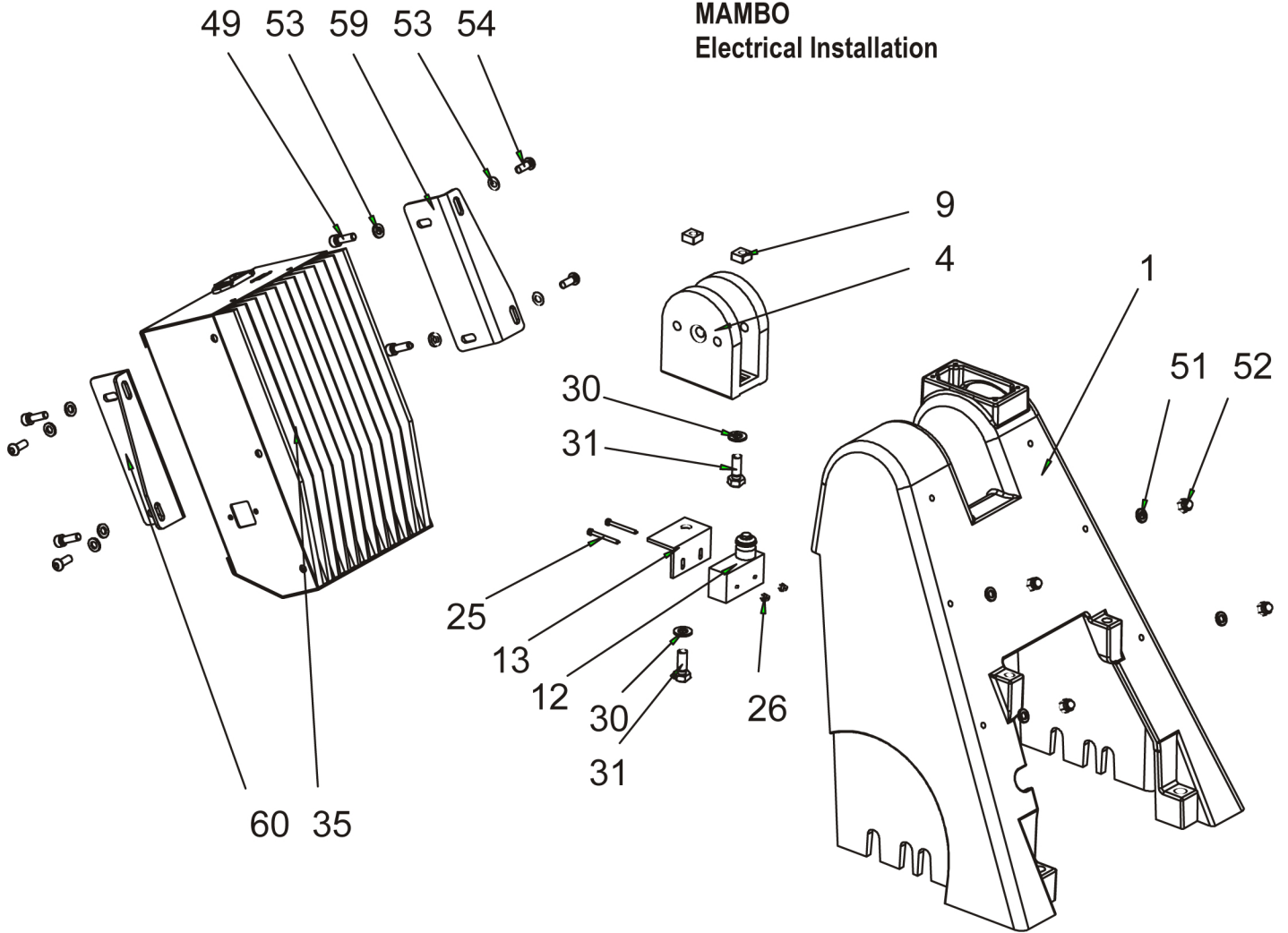
67	8	Screw 5/16"	037936
68	1	Plate	038502
69	4	Cylindrical screw M4 x 20	017725
70	2	Connection	038285
71	2	Handle	037954
72	2	Clamping lever	037952
73	1	Intermediate flange	037966
74	1	Upper flange	037965
75	1	Lower flange	037964
76	6	Cache	037951
77	1	Coupling flange	015401
78	3	Distance washer	015402
79	12	Counter sunk screw M8 x 12	038423
80	3	Counter sunk screw M8 x 18	014759
150	1	Knob	014647
152	1	Two-hand switch	015000
153	1	Lever	017894
154	1	Base support	017858
155	1	Switch housing	017875
156	1	Press plate	017901
157	1	Foam grip	015421
158	1	Counter sink screw	017632
160	6	Square nut	017605
161	1	Fixing pin	015406
162	2	Clamp socket	015431
165	2	Cable hanger	015427
167	1	Towing bar	017592
168	1	Spring (handle adjustment)	014898
169	2	Starlock head D8	014880
170	2	Cylindrical screw M8 x 40	014738
172	2	Counter sink screw M8 x 18	014759
173	1	Profile rod	017843
175	4	Washer	014828
176	1	Headless Pin M8 x 30	017523
178	1	Potentiometer	014650
179	1	Control wire	038032
181	2	Cylindrical screw M4 x 8	017473
185	2	Hexagon nut M8	014810
187	2	Washer	017663
188	2	Cap nut M8	014825
190	2	Headless Pin M8 x 35	014790
191	1	Cable pit	038289
193	1	Cylindrical screw M4 x 55	017639
194	4	Cable clamp	017680
195	4	Oval head screw M4 x 25	017680
196	1	Hexagon nut M10	017013
197	1	LED lamp	038281
198	1	Wiring	039006

## STANDARD WARRANTY

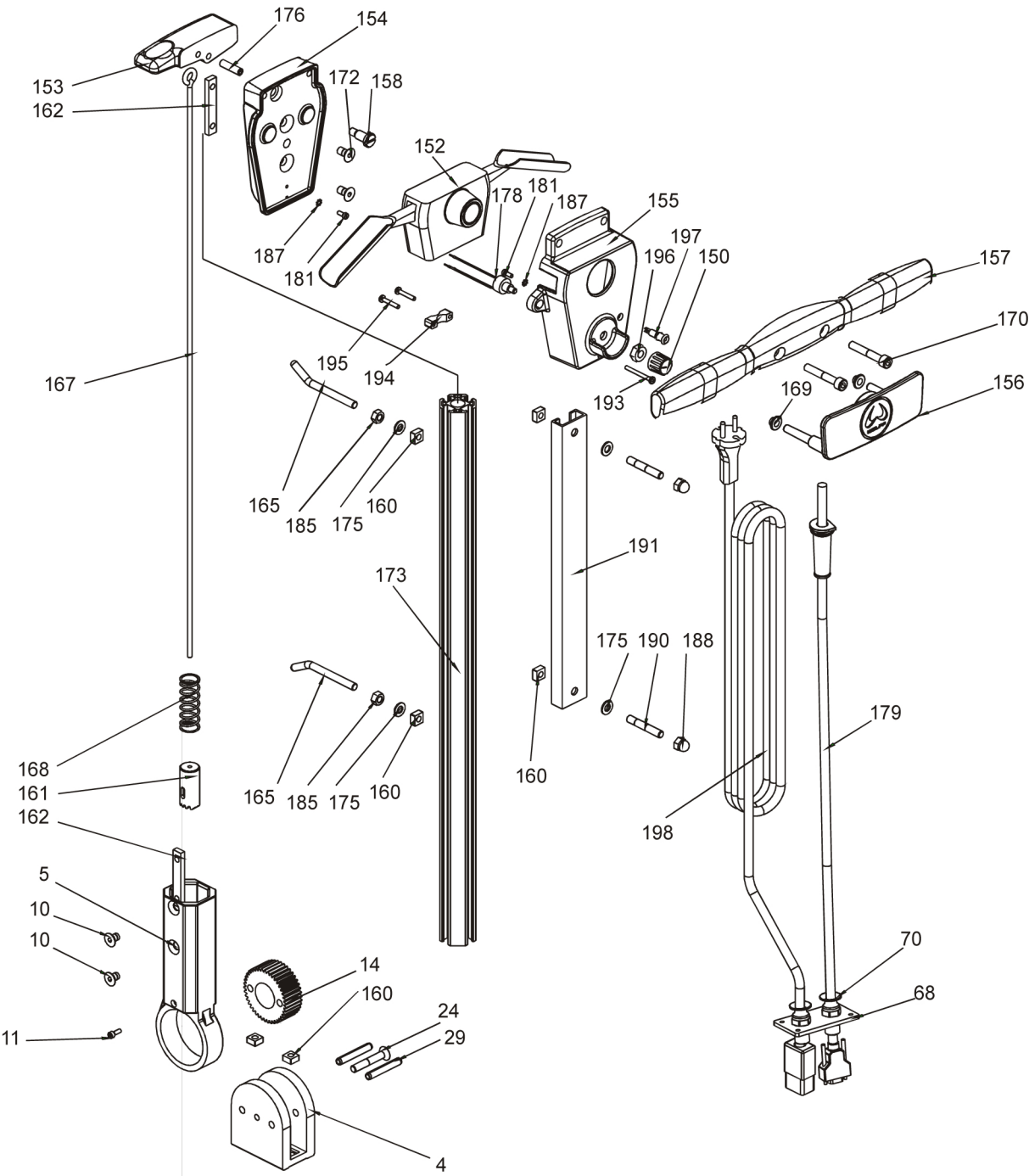


**MAMBO**  
Housing + Chassis

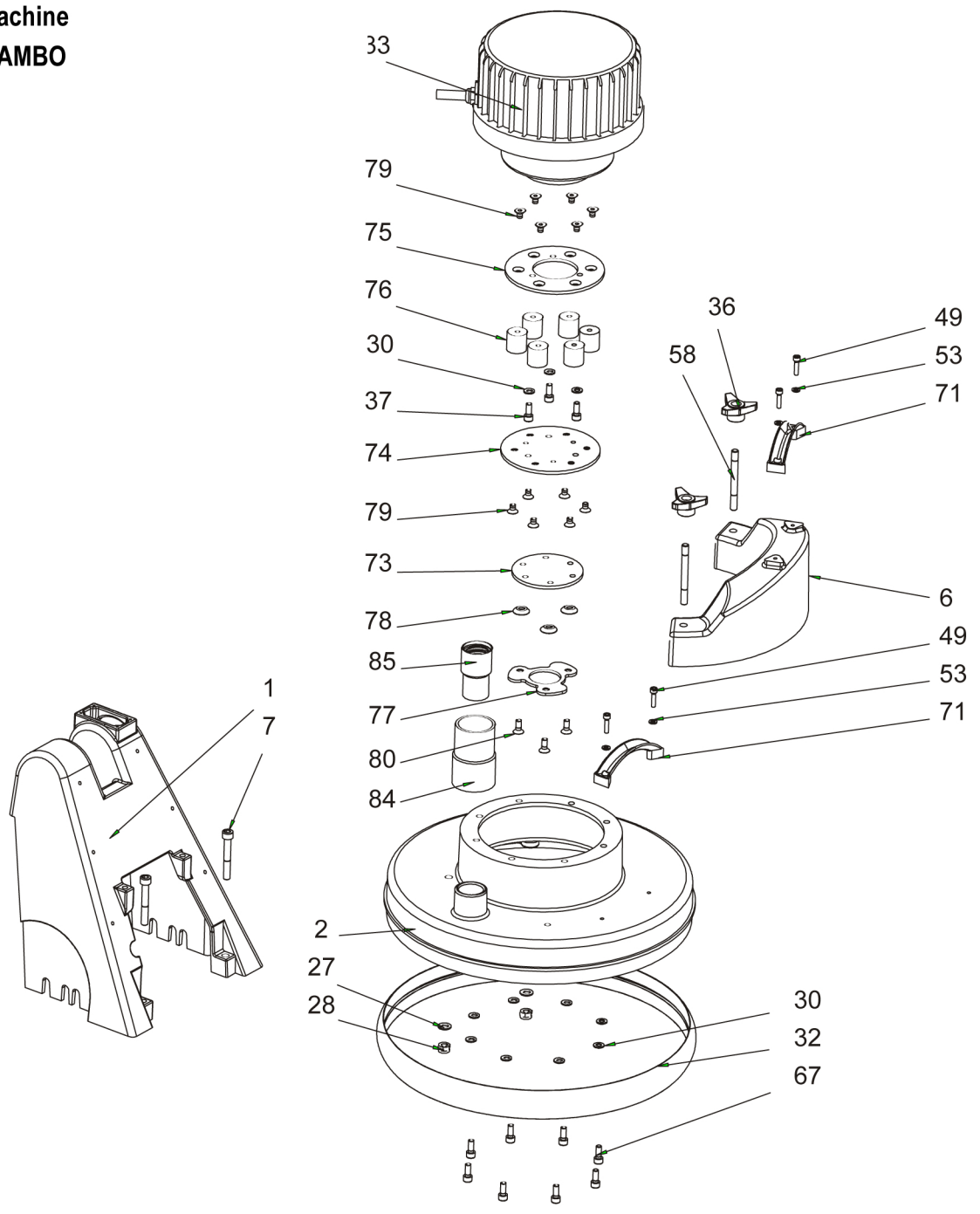
# MAMBO Electrical Installation



# MAMBO HANDLE

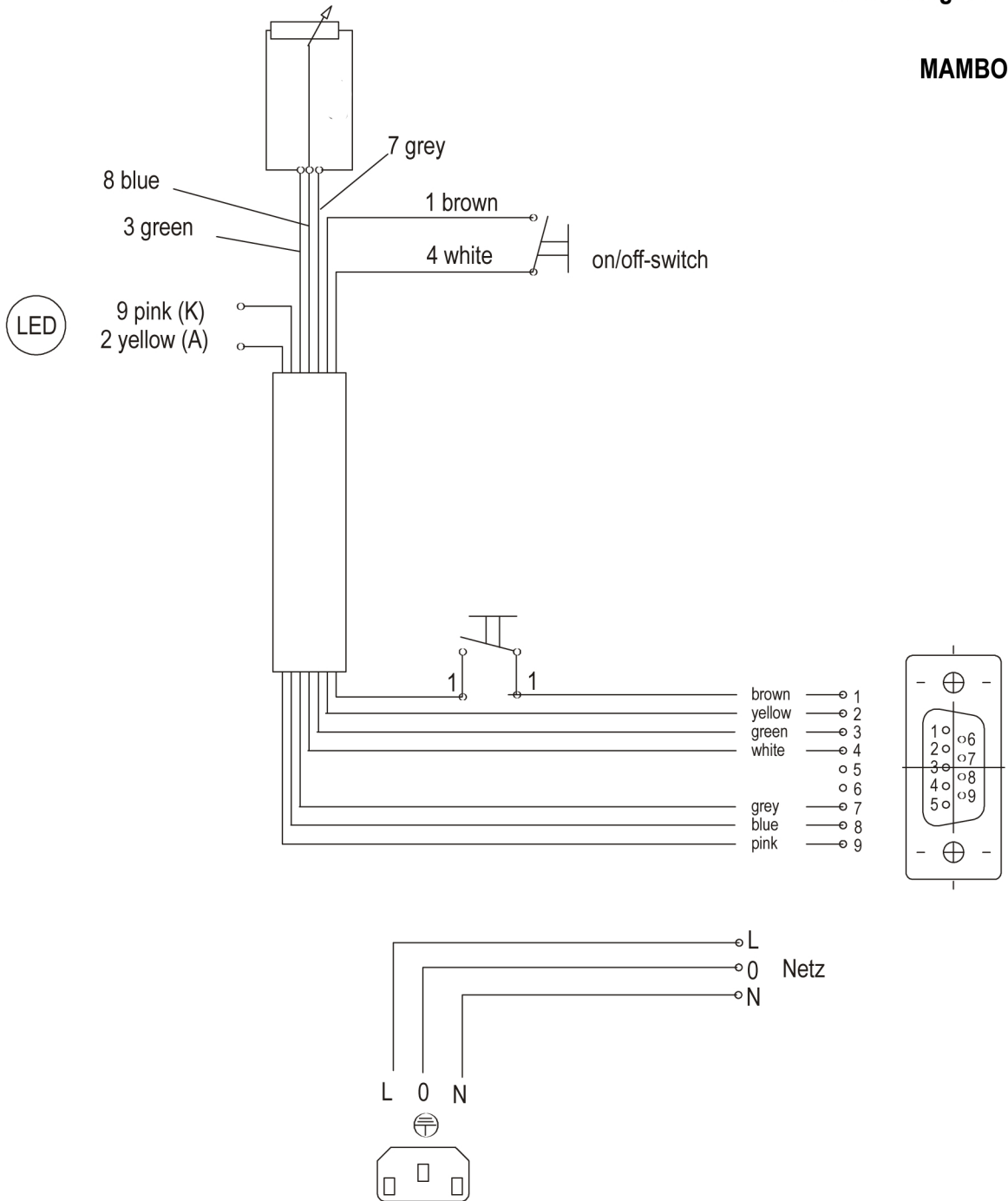


Machine  
MAMBO



# Circuit diagram

## MAMBO



Netzanschluss Motor

SINCLAIR EQUIPMENT COMPANY'S tools are warranted to be free of defects in workmanship and materials for a period of one year from the date of original purchase. Should any trouble develop during this one year period, return the complete tool, freight prepaid, to SINCLAIR'S authorized Service Center. If inspection shows the trouble is caused by defective workmanship or materials, SINCLAIR EQUIPMENT COMPANY will repair, or, at its option, replace without charge.

- This warranty does not apply to malfunctions caused by damage, unreasonable use, faulty repairs made by others, or failure to provide recommended maintenance.
- The warranty is void if the product is altered by the original consumer purchaser, or if it is used in a manner not recommended by the manufacturer.
- The warranties do not cover consequential damages or transportation charges incurred with the replacement or repair of SINCLAIR EQUIPMENT COMPANY products.
- Not responsible for lost job or down time.

In no event shall SINCLAIR be liable for any indirect, incidental, or consequential damages from the sale or use of the product. This disclaimer applies both during and after the term of this warranty.

SINCLAIR EQUIPMENT COMPANY disclaims liability for any implied warranties, including implied warranties of "merchantability" and "fitness for a specific purpose", after the one year term of this warranty.

This warranty gives you specific legal rights, and you may have other rights which vary from state to state. Should you have any questions, contact SINCLAIR EQUIPMENT COMPANY at (530) 626-9386.

To obtain warranty service, deliver or send the complete tool, prepaid, to SINCLAIR EQUIPMENT COMPANY. Be sure to include the following information:

- Nature of failure;
- Name and address of distributor where tool was purchased;
- Application of tool when rendered defective; and
- Proof of purchase.

To obtain individual repair parts, contact SINCLAIR EQUIPMENT COMPANY with the following information:

- Tool model number;
- Item part number; and
- Description of part.



