

YOUR GUIDE TO THE LANTUS[®] SOLOSTAR[®] INSULIN PEN

FOR TAKING ONCE-DAILY,
24-HOUR LANTUS[®]



Please [click here](http://products.sanofi-aventis.us/lantus/lantus.html) or visit:
<http://products.sanofi-aventis.us/lantus/lantus.html>
for Additional Important Information.

Ask your treating healthcare professional if Lantus[®] fits into your overall diabetes treatment plan, which includes diet, exercise, oral medications, and/or mealtime insulin.




LANTUS[®] SoloSTAR[®]
insulin glargine [rDNA origin] injection

Lantus® helps control
blood sugar for 24 hours

Prefilled with Lantus®,
the #1 prescribed insulin*

Take it just once a day



Uses Ultra-Fine™ needle†

Easy to use

Easy push-button
injection

LANTUS®
insulin glargine [rDNA origin] injection

SoloSTAR®

Lantus® is the only 24-hour insulin approved exclusively for use once a day. As part of an overall diabetes treatment plan including diet, exercise, other diabetes medications, and regular blood sugar testing, taking Lantus® just once at the same time each day helps control blood sugar all day long.

1-866-4LANTUS

There's a more convenient way to take Lantus® every day: the Lantus® SoloSTAR® insulin pen. If you're considering insulin for the first time, or if you want the power of once-daily insulin and the convenience of a pen, ask your treating healthcare professional today whether Lantus® SoloSTAR® is right for you.

www.lantus.com

Important Safety Information for Lantus®

Prescription Lantus® is for adults with type 2 diabetes or adults and children (6 years and older) with type 1 diabetes who require long-acting insulin for the control of high blood sugar.

Lantus® SoloSTAR® is a disposable prefilled insulin pen. **Needles and the Lantus® SoloSTAR® pen must not be shared.**

DO NOT DILUTE OR MIX LANTUS® WITH ANY OTHER INSULIN OR SOLUTION. It will not work as intended, and you may lose blood sugar control, which could be serious. Do not change your insulin without talking with your doctor.

The syringe must not contain any other medication or residue. You should not use Lantus® if you are allergic to insulin. Lantus® is a long-acting insulin you inject just once a day, at the same time each day. **You must test your blood sugar levels while using an insulin such as Lantus®.**

The most common side effect of insulin, including Lantus®, is hypoglycemia, which may be serious. Other possible side effects may include injection site reactions, including changes in fat tissue at the injection site, and allergic reactions, including itching and rash. In rare cases, some allergic reactions may be life threatening. Tell your doctor about other medicines and supplements you are taking because they can change the way insulin works.

*Based on TRx data from IMS Health, National Prescription Audit™ (Next Generation Prescription Methodology). Time period from May 2003 to January 2009.

Ultra-Fine is a trademark of Becton, Dickinson and Company.

†Needle not included with pen

Please [click here](http://products.sanofi-aventis.us/lantus/lantus.html) or visit: <http://products.sanofi-aventis.us/lantus/lantus.html> for Additional Important Information.

GETTING TO KNOW LANTUS® SOLOSTAR®

If your treating healthcare professional has prescribed the Lantus® SoloSTAR® pen as part of your diabetes treatment plan, the rest of this booklet will guide you.

Please refer to the instruction leaflet that comes with the pen for complete information. If you have questions, ask your treating healthcare professional.

Or go online to lantus.com, or call 1-800-633-1610 to talk to a Lantus® SoloSTAR® expert.

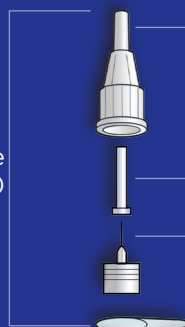


Please [click here](http://products.sanofi-aventis.us/lantus/lantus.html) or visit:
<http://products.sanofi-aventis.us/lantus/lantus.html>
 for Additional Important Information.

Pen cap



Pen needle (not included)



Outer needle cap

Inner needle cap

Needle

Protective seal

Pen body



Rubber seal

Insulin reservoir

Dose window

Dosage knob

Injection button


LANTUS® SoloSTAR®
 insulin glargine [rDNA origin] injection

HOW TO USE LANTUS® SOLOSTAR®

Follow these straightforward steps every time you use the Lantus® SoloStar® pen.

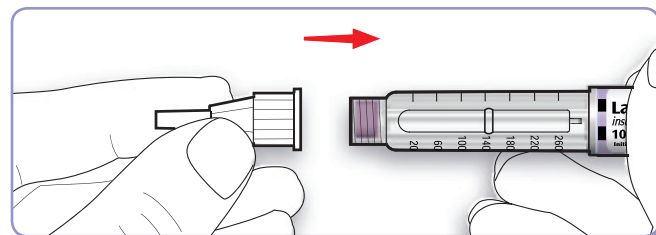
CHECK YOUR PEN.

1. Take off the pen cap.
2. Look at the insulin in the reservoir. Lantus® is clear, so don't use the Lantus® SoloStar® pen if the insulin is cloudy, colored, or has particles in it.

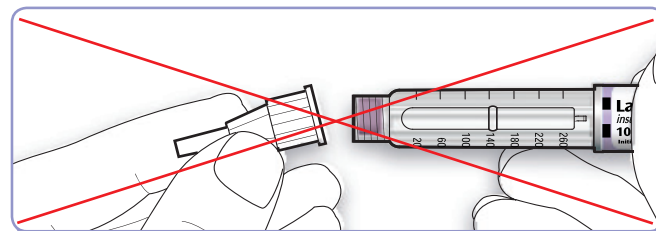


STEP 1 ATTACH THE NEEDLE

1. Wipe the rubber seal on the pen body with an alcohol swab.
2. Remove the protective seal from a new needle. The Lantus® SoloStar® pen works with Becton Dickinson (BD) Ultra-Fine™ needles. Use a sterile new needle for each injection to prevent contamination and blocked needles.
3. Line up the needle with the pen. Keep the needle straight as you screw it on. Make sure the needle is firmly attached.



4. Take extra care: If you don't keep the needle straight while you attach it, it can damage the rubber seal and cause leaks, or break the needle.



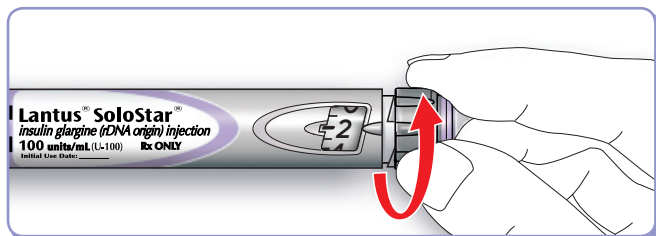
Please [click here](http://products.sanofi-aventis.us/lantus/lantus.html) or visit:
<http://products.sanofi-aventis.us/lantus/lantus.html>
for Additional Important Information.

STEP 2 DO A SAFETY TEST

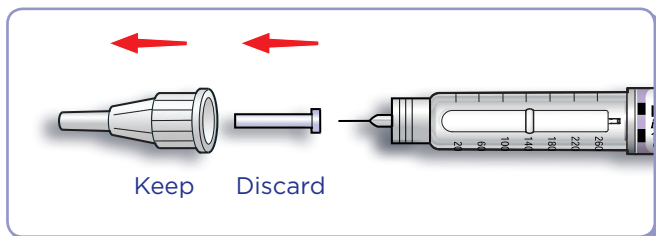


Always perform the safety test before every injection. This removes air bubbles and ensures the pen and needle are working properly.

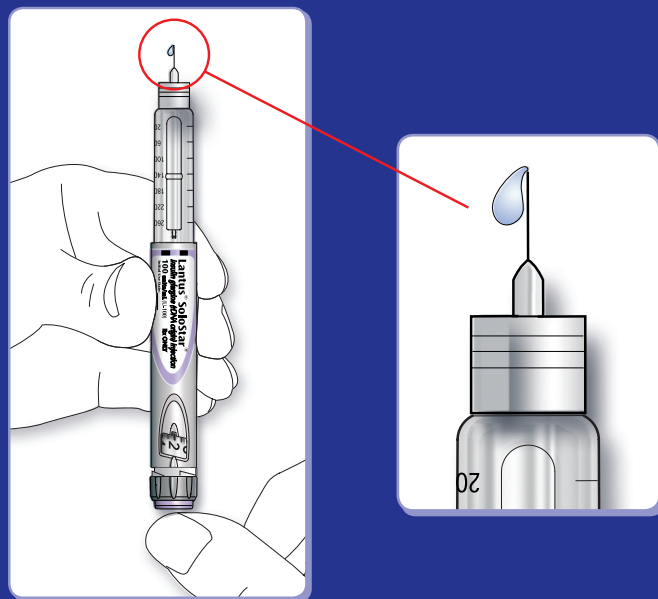
1. Select a dose of 2 units by turning the dosage knob.



2. Take off the outer needle cap. Keep this for removing the used needle after your injection.
3. Take off the inner needle cap and throw it away.



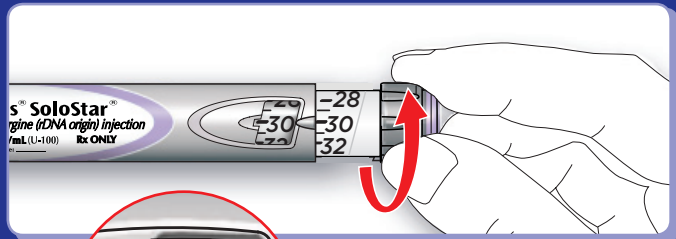
4. Hold the pen with the needle pointing upward.
5. Tap the insulin reservoir to make any air bubbles rise up toward the needle.
6. Press the injection button all the way in. Check to see if insulin comes out of the needle tip. If insulin does not come out, repeat the test until it does.



If no insulin comes out after doing the test three times, replace the needle with a new one and try again.

STEP 3 SELECT YOUR DOSE

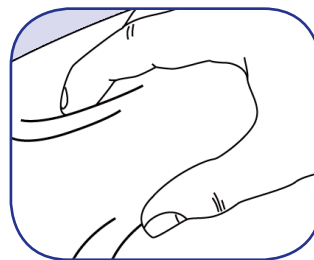
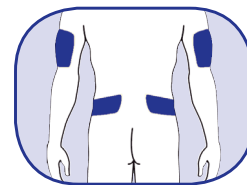
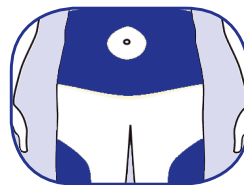
1. After your safety test, make sure the dose window reads "0".
2. Select your required dose. You can set doses from 1 to 80 units in steps of 1 unit. If you dial past your dose, you can dial back down. In this example, the selected dose is 30 units. Of course, your dose may be different.



Choose an injection area

Pick an area of your body to inject: either the abdomen, thigh, or upper arm.

Once you choose an area, clean the skin with rubbing alcohol.



If you can't dial to the dose you want, make sure you have enough insulin in the reservoir. The Lantus® SoloStar® pen prevents you from dialing past the number of units left in the pen. If there isn't enough insulin for your full dose, you can either complete your dose from a new pen, or use a new pen for your full dose.

Please [click here](http://products.sanofi-aventis.us/lantus/lantus.html) or visit:

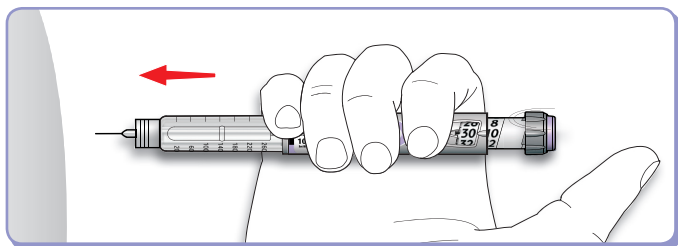
<http://products.sanofi-aventis.us/lantus/lantus.html>
for Additional Important Information.


insulin glargine [rDNA origin] injection

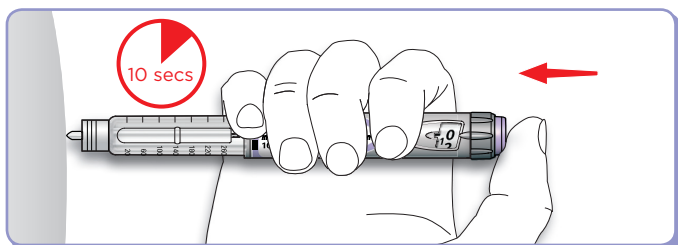
STEP 4 INJECT YOUR DOSE

Use the injection method you learned from your treating healthcare professional.

1. Lightly pinch a fold of skin and insert the needle straight into the pinched skin.



2. Deliver the dose by pressing the injection button all the way in. The number in the dose window will return to "0" as you inject.
3. Keep the injection button pressed in and slowly count to 10. Then withdraw the needle from the skin.



Insulin keeps coming out for a short while after you have pressed the injection button in, so keep it pressed for 10 seconds before you withdraw the needle from your skin to make sure you get your full dose.

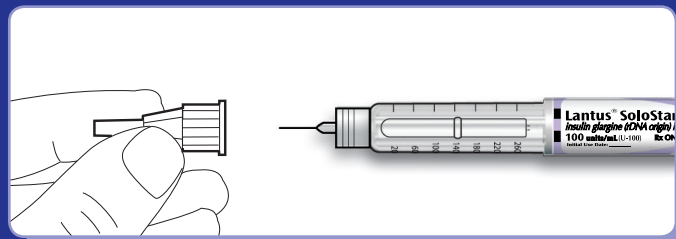
Please click here or visit:

11 <http://products.sanofi-aventis.us/lantus/lantus.html>
for Additional Important Information.

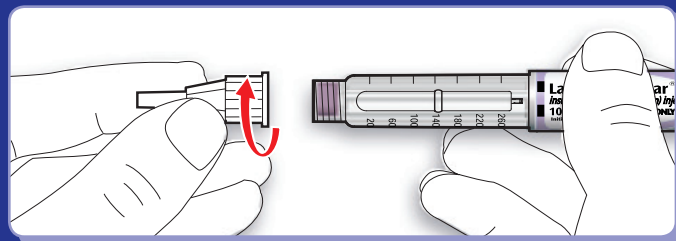
STEP 5 REMOVE THE NEEDLE

Remove the needle after each injection and store the Lantus® SoloStar® pen without a needle attached. This will help prevent contamination, infection, air in the insulin reservoir, and insulin leaks.

1. Replace the outer needle cap.



2. Unscrew the needle from the pen.



3. Dispose of the needle safely as instructed by your treating healthcare professional.
4. Put the pen cap back on and store the pen until your next injection.


LANTUS® SoloSTAR®
insulin glargine [rDNA origin] injection

CARE FOR YOUR LANTUS[®] SOLOSTAR[®]

Once you use a pen:

- Don't refrigerate it.
- You can continue to use it for up to 28 days.
- Store it safely at room temperature but not higher than 86°F.
- Don't leave it anywhere it might overheat, such as a windowsill or a car parked in sunlight. And keep the pen away from sunlight as much as possible.
- After 28 days, throw it away, even if it still has insulin in it.
- Don't use it after the expiration date printed on the label or carton.
- Occasionally wipe it with a damp cloth to keep it clean.
- Don't run it under water or use any soap or solvents.

Please [click here](http://products.sanofi-aventis.us/lantus/lantus.html) or visit:
<http://products.sanofi-aventis.us/lantus/lantus.html>
for Additional Important Information.

Before you use the pens:

- Keep them in the outer package and in the refrigerator.
- Don't let them freeze—this will damage the insulin. And don't put them next to the freezer or near a freezer pack.
- Take one out of the refrigerator and let it warm up to room temperature an hour or two before you use it. Cold insulin can be more painful to inject.



Always keep at least one spare Lantus[®] SoloStar[®] pen in case your current one is lost or damaged.

**LANTUS[®] SoloSTAR[®]**
insulin glargine [rDNA origin] injection