

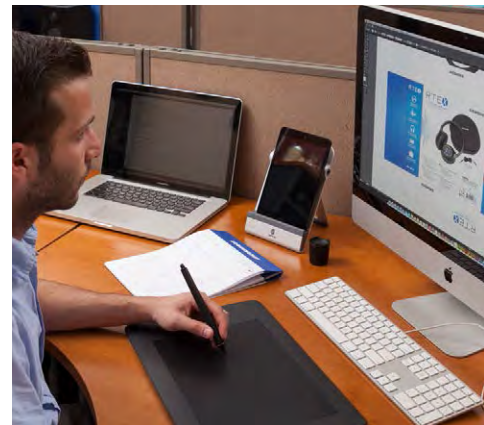


**SAMSON**<sup>®</sup>  
PROFESSIONAL AUDIO SOLUTIONS





**Samson Technologies** originated in 1980, quickly becoming a leading developer of wireless microphone and instrument systems. In 2005, Samson introduced the first professional USB microphones. Today, the company is an industry leader in both consumer and professional audio solutions whose products are known for their fidelity and reliability. Over three decades, Samson has grown from a small two-person operation to a worldwide enterprise dedicated to innovating products that are preferred by recording artists, performers, educators and audio professionals throughout the world. [samsontech.com](http://samsontech.com)





4



28



59



73



**SAMSON**

C01U PRO

C01U PRO  
PAGE 10



CONCERT 99 | PAGE 75

## TABLE OF CONTENTS

MICROPHONES.....	4
PORTABLE PA.....	28
PA CABINETS .....	36
MIXERS.....	44
SIGNAL PROCESSORS .....	48
POWER AMPLIFIERS.....	50
USB MIDI CONTROLLERS .....	53
STUDIO MONITORS.....	59
HEADPHONES.....	68
WIRELESS SYSTEMS .....	73
ACCESSORIES.....	87



# MICROPHONES

USB | Dynamic | Condenser | Drum | Headworn



# GO MIC

## Portable USB Condenser Microphone



Further expanding on the already diverse line of USB microphones, Samson has created the Go Mic as a versatile computer-based miking and recording solution.

Because of its custom compact design, the Go Mic can clip right onto your laptop or sit unobtrusively on your desk. Plug and play operation also means it's completely compatible with a Mac or PC, with no drivers required. Perfect for recording music, podcasts or field recording, the Go Mic's range of functionality extends beyond typical USB microphones. It's also ideal for voice recognition software, iChat, web casting and even Voice over Internet Protocol (VoIP).

Thanks to its switchable cardioid and omnidirectional pickup patterns, you can pick whichever pattern is more appropriate for your specific situation. Plus, with a frequency response of 20Hz–18kHz and a resolution of 16-bit, 44.1kHz, you can be sure you're getting professional audio specs in a compact, multi purpose design.

High-quality components and meticulous engineering ensure the Go Mic will offer clear, professional audio reproduction in any number of applications, especially on-the-go.

### FEATURES

- Portable USB condenser microphone
- Mac and PC compatible, no drivers required
- Custom, compact design that clips to a laptop or sits on a desk
- Perfect for recording music, podcasting and field recording, voice recognition software, iChat, VoIP and webcasting
- Switchable cardioid or omnidirectional pickup patterns
- 16-bit, 44.1kHz resolution
- Smooth, flat frequency response of 20Hz–18kHz
- Stereo 1/8" headphone output for no latency monitoring
- Includes USB cable, cable clip and carry case
- Samson Sound Deck Noise Cancellation Software (Mac OS X/Windows) available for purchase



Clips to a laptop or iPad



Carry case included

### GO MIC

UPC .....	809164009566
SKU .....	SAGOMIC
HEIGHT .....	6"
WIDTH .....	5.75"
DEPTH .....	2"
WEIGHT .....	0.7lb
MASTER CARTON QUANTITY: 20	
* DIMENSIONS AND WEIGHT BOXED	

# **SAMSON**

# GO MIC DIRECT

Portable USB Microphone with Noise Cancellation Technology



Samson's Go Mic Direct is the ideal portable audio solution for Skype, FaceTime, voice recognition software, as well as recording audio for YouTube videos, lectures, podcasts and webinars. The Go Mic Direct also features the Samson Sound Deck Noise Cancellation Software (Mac OS X/Windows), allowing you to capture pristine, accurate vocal communications and recordings in any environment. With Go Mic Direct, you'll never want to use your computer's internal microphone again.

The Go Mic Direct's custom, ultra-compact design features a built-in USB connector that allows the mic to be plugged directly into your Mac or PC without blocking surrounding ports. In addition, the connector is retractable for maximum portability and safe transport when not in use. Compatible with both Mac and PC, Go Mic Direct offers convenient plug-and-play operation with no driver installation required.

At the core of the Go Mic Direct is the included Samson Sound Deck Noise Cancellation Software. Sound Deck uses patented noise cancellation algorithms to minimize recurring background noise such as fans and hiss, ensuring only clean, high-integrity audio reaches your computer applications.

## FEATURES

- Portable USB condenser microphone
- Ideal for Skype, FaceTime and voice recognition software
- Great for mobile podcasting, audio for YouTube, recording music and more
- Mac OS X and Windows compatible, no driver installation required
- Ultra-compact design with retractable USB connector that won't block surrounding ports
- Compatible with most computer-based digital audio software
- Dual 10mm microphone capsules
- 16-bit, 44.1kHz resolution
- Smooth, flat frequency response of 20Hz–20kHz
- iPad and USB bus powered
- Protective carry case included
- Samson Sound Deck Noise Cancellation Software (Mac OS X/Windows) provides:
  - 1) Digital Noise Reduction minimizes background noise for clear communication in noisy environments
  - 2) Built-in digital audio recorder with simple file export functionality (Windows only)



Free Samson Sound Deck Noise Cancellation Software download available

## GO MIC DIRECT

UPC .....	809164015918
SKU .....	SAGOMICDIR
HEIGHT .....	4.5"
WIDTH .....	4.5"
DEPTH .....	1.25"
WEIGHT .....	0.19lb
MASTER CARTON QUANTITY: 40	
* DIMENSIONS AND WEIGHT BOXED	

# SAMSON®

# GO MIC CONNECT

Portable Stereo USB Microphone with Focused Pattern Technology



Samson's Go Mic Connect Portable Stereo USB Microphone is one of the most advanced audio solutions for computer recording, as well as VoIP and speech-to-text communication. Combining Focused Pattern Technology and Active Noise Cancellation, the Go Mic Connect creates a unique pickup pattern that focuses the microphone's sensitivity toward the desired sound source. This ensures only clean, high-integrity audio reaches your computer applications.

At the core of the Go Mic Connect is an advanced, unique version of the Samson Sound Deck software. The software's Focused Pattern Technology allows the focus array to be positioned, as well as toggled on and off. Once set, all sound that originates outside the focus area is significantly reduced, making the Go Mic Connect ideal for business communications and mobile recording. Sound Deck's Active Noise Cancellation improves intelligibility of the audio heard through VoIP communication, while the Echo Erase feature reduces echo or feedback caused by monitoring audio with speakers during recording.

Go Mic Connect features a custom, compact design that clips to the top of your laptop or computer monitor, as well as internally shock-mounted dual microphone capsules and a headphone output for zero-latency monitoring. Go Mic Connect combines studio-quality sound and "next-level" technology for exceptional audio via Skype™, FaceTime®, Google Hangouts™ and more.

## FEATURES

- Portable stereo USB microphone
- Ideal for Skype™, FaceTime®, Google Hangouts™, business communications and more
- Focused Pattern Technology\* aligns the microphone's peak sensitivity with a desired sound source
- Active Noise Cancellation\* minimizes background noise for clearer communications
- Echo Erase\* eliminates echo/feedback caused by your computer speakers
- Compatible with most VoIP, speech-to-text and DAW software
- Mac and Windows compatible, no driver installation required
- Compact design clips atop your laptop or computer monitor
- Headphone output for zero-latency monitoring
- Mute switch
- Smooth, flat frequency response of 20Hz–20kHz
- iPad® and USB bus powered
- USB cable and protective pouch included

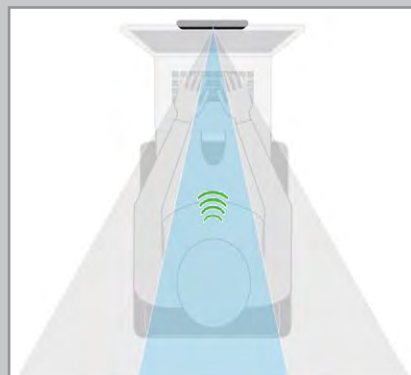
\*Focused Pattern Technology, Active Noise Cancellation, Echo Erase available only for Mac and Windows



Free Samson Sound Deck audio software with Focused Pattern Technology download available



Clips atop your laptop or computer monitor



Focused Pattern Technology

## GO MIC CONNECT

UPC .....	809164016977
SKU .....	SAGOMICARR
HEIGHT .....	7"
WIDTH .....	5.25"
DEPTH .....	1.75"
WEIGHT .....	TBD
MASTER CARTON QUANTITY: 40	

\* DIMENSIONS AND WEIGHT BOXED

# SAMSON

# METEOR MIC

## USB Studio Condenser Microphone



Samson's Meteor Mic is the universal solution for recording music on your computer. Perfect for your home studio, Meteor Mic is also ideal for Skype, iChat or voice recognition software. With Samson's Meteor Mic, you can make incredible recordings that are out of this world.

Meteor Mic produces rich audio recording for any application. Our largest condenser diaphragm (25mm) forms Meteor Mic's cardioid pickup capabilities. And with its smooth, flat frequency response and CD quality 16-bit, 44.1/48kHz resolution, you get professional audio features in a durable, yet compact ultra modern design.

Its all zinc, chrome-plated body includes a patent pending fold-back leg design, so it can sit on your desktop in the optimal position for any recording application from acoustic guitars and vocals to speech. It also features a built-in mic stand adapter for use with boom or desktop mic stands. Meteor Mic features a stereo 1/8" headphone jack for no latency monitoring and headphone volume control. In addition, a microphone mute switch grants you the luxury of immediate privacy while video conferencing.

Start recording with your Meteor Mic right out of the box. There is no need for drivers, as the mic can be directly connected to any computer and is compatible with most computer-based digital audio workstations. To complete the package, a USB cable and protective carry pouch are included.

### FEATURES

- Large, 25mm diaphragm USB studio condenser microphone
- Smooth, flat frequency response of 20Hz–20kHz
- Plugs directly into any computer with a USB input, no drivers required
- Stereo 1/8" headphone jack for zero-latency monitoring
- Compatible with most computer-based digital audio workstation software
- Headphone volume control with microphone mute switch
- Works with iPad using Apple's iPad Camera Connection Kit or Lightning USB Camera Adapter
- Fold-back leg design provides optimal mic positioning
- Cardioid pickup pattern
- Durable chrome-plated body
- 16-bit, 44.1/48kHz resolution
- Includes USB cable and carry pouch
- Samson Sound Deck Noise Cancellation Software (Mac OS X/Windows) available for purchase



Ideal for Skype, iChat or voice recognition software

### METEOR MIC

UPC .....	809164012733
SKU .....	SAMTR
HEIGHT .....	6.25"
WIDTH .....	5"
DEPTH .....	3"
WEIGHT .....	1.45lb
MASTER CARTON QUANTITY: 20	
<b>* DIMENSIONS AND WEIGHT BOXED</b>	

# SAMSON®



# METEORITE

## USB Condenser Microphone



Samson's Meteorite is the universal solution for capturing high-quality recordings on your computer. Meteorite is ideal for podcasting, creating audio for YouTube videos and recording music on your favorite software or apps. This sleek microphone will also vastly improve your ability to communicate with friends, family and business associates on programs like Skype, FaceTime and other VoIP software.

Meteorite presents an immediate improvement over your computer's internal microphone, bypassing the computers standard mic capsule and noisy soundcard, in favor of the Meteorite's studio-quality 14mm capsule and dedicated audio conversion path. Meteorite's larger, professional capsule provides a smooth, flat frequency response to capture the natural warmth and dynamics of your voice, while its 16-bit, 44.1/48kHz resolution ensures the audio transferred to your computer or tablet is as authentic as hearing it live.

Meteorite mounts to a magnetic base that lets you tilt and swivel the microphone to customize its positioning to your exact preferences. You can even take the microphone off its base and speak directly into it for recording or communicating in crowded noisy environments. Start recording with Meteorite right out of the box. There's no need to install drivers, as the mic can be directly connected to any computer via its integrated USB cable. Also, when combined with the iPad using Apple's Lightning USB Camera Adapter or Camera Connection Kit (30-pin), the Meteorite is a great tool for recording on the go.

### FEATURES

- 14mm diaphragm USB condenser microphone
- Perfect for high-quality recording in desktop and home studio environments
- Ultra-clear voice capture for Skype, FaceTime and voice recognition software applications
- Plugs directly into any computer with a USB input, no driver installation required
- Compatible with most computer-based digital audio software
- Cardioid pickup pattern
- 16-bit, 44.1/48kHz resolution
- Smooth, flat frequency response of 20Hz–20kHz
- Integrated USB cable
- iPad and USB bus powered
- Chrome-plated body
- Removable magnetic base for optimal desktop positioning
- Samson Sound Deck Noise Cancellation Software (Mac OS X/Windows) available for purchase



Mounts to magnetic base

Tilts and swivels for full range of movement



Connects to iPad via Apple's Lightning USB Camera Adapter or Camera Connection Kit (30-pin)



Perfect for Skype, FaceTime and voice recognition software

### METEORITE

UPC .....	809164015666
SKU .....	SAMETEORITE
HEIGHT .....	5.25"
WIDTH .....	3.75"
DEPTH .....	2.25"
WEIGHT .....	0.38lb

MASTER CARTON QUANTITY: 20

\* DIMENSIONS AND WEIGHT BOXED

# SAMSON®

# C01U PRO

## USB Studio Condenser Microphone



In 2005, Samson introduced the world's first USB studio condenser microphone, the C01U. Today, we're expanding on its revolutionary design with the new C01U Pro. Now with a headphone output for zero-latency monitoring and an improved signal-to-noise ratio, the C01U Pro ensures the natural warmth and detail of vocal and instrumental performances are captured in all your digital recordings.

The C01U Pro is the most convenient way to get high-quality audio on your computer. Its large, 19mm diaphragm captures all the subtle nuances of your voice in a variety of applications. Whether you're a musician or aspiring video or podcast producer, the C01U Pro will instantly increase the audio quality of your musical recordings, YouTube videos and podcasts. It also makes for superior singer-songwriter demos and accurate speech-to-text results. In addition, the mic element is shock-mounted within a solid die-cast metal construction to minimize unwanted handling noise/vibrations on your recordings.

The C01U Pro comes complete with a tripod stand and swivel mount. The microphone features plug-and-play operation (no driver installation required) so you can start recording immediately. The C01U Pro is also compatible with iPads and iPhones (4S and later) using Apple's Lightning USB Camera Adapter or Camera Connection Kit (30-pin).

### FEATURES

- USB studio condenser microphone
- Large, 19mm diaphragm ensures pristine studio-quality audio
- Headphone output for zero-latency monitoring
- Ideal for recording music, ADR work, Sound Foley, voiceovers, audio for YouTube videos
- Vastly improves Skype, FaceTime, VoIP applications and speech-to-text dictation software
- Supercardioid pickup pattern
- Smooth, flat frequency response of 20Hz–20kHz
- 16-bit, 44.1/48kHz resolution
- Solid die-cast metal construction
- Shock-mounted mic element
- Peak LED indicator
- Plug-and-play, no driver installation required
- Compatible with most recording software and apps
- USB bus powered via Mac, PC or iPad
- Includes tripod stand, swivel mount and USB cable
- Samson Sound Deck Noise Cancellation Software (Mac OS X/Windows) available for purchase



Headphone output for zero latency monitoring

### C01U PRO

UPC .....	809164016045
SKU .....	SAC01UPRO
HEIGHT .....	8.75"
WIDTH .....	5.5"
DEPTH .....	2.75"
WEIGHT .....	1.5lb
MASTER CARTON QUANTITY: 12	

\* DIMENSIONS AND WEIGHT BOXED

# **SAMSON®**

# C03U

## Multi-Pattern USB Studio Condenser Microphone



Following the success of the C01U, Samson presents the C03U Multi-Pattern USB Studio Condenser Microphone. Based on the extremely popular C03 mic, the C03U delivers pristine audio quality with enhanced capabilities, including a high quality A/D converter and USB output.

The C03U features dual, large 19mm internally shockmounted diaphragms with high SPL neodymium elements and three selectable pickup patterns – cardioid, omnidirectional and bidirectional. Each of these patterns provide a smooth, flat frequency response of 20Hz–18kHz supported by a switchable high-pass filter and -10 dB pad. Capturing audio at a 16-bit, 48kHz resolution, the C03U offers the accuracy you need to be sure that what you hear is what you get.

The C03U is USB compatible with any Mac or PC, as well as most DAW software programs, including GarageBand. The C03U comes with Cakewalk® Sonar LE music production software, so you can just plug the mic in and start recording... No additional drivers or special software is needed. In addition, desktop mic stand, mic clip, USB cable and carry pouch are included. All this, along with its solid die-cast construction, makes the C03U just as durable as it is portable.

### FEATURES

- Dual large, 19mm diaphragm studio condenser microphone
- Plug-and-play, no driver installation required
- Compatible with most computer-based digital audio workstation software
- Three selectable pickup patterns – cardioid, omnidirectional and bidirectional
- High quality A/D converter with 16-bit, 48kHz resolution
- Smooth, flat frequency response of 20Hz–18kHz
- Handles high SPLs of up to 136dB
- Switchable high-pass filter and -10dB pad
- Solid, die-cast construction with heavy gauge mesh grill
- Includes desktop mic stand, mic clip, USB cable and carry pouch
- Bundled with Cakewalk® Sonar LE music production software
- Samson Sound Deck Noise Cancellation Software (Mac OS X/Windows) available for purchase



### C03U

UPC .....	809164006718
SKU .....	SAC03UCW
HEIGHT .....	13"
WIDTH .....	10.5"
DEPTH .....	3.5"
WEIGHT .....	1lb

MASTER CARTON QUANTITY: 12

\* DIMENSIONS AND WEIGHT BOXED

# **SAMSON®**

# G-TRACK

## USB Condenser Mic with Audio Interface



Samson's G-Track is the world's first USB condenser microphone with a built-in audio interface and mixer, allowing simultaneous recording of vocals along with guitars, bass, or keyboard while also providing no latency monitoring through an on-board headphone output. And the G-Track allows you to switch the interface so that you record vocals only or instruments only or a mix of both.

Now singer/songwriters can directly record vocals and instruments quickly and easily with one device, making the G-Track a must have for any songwriter's home studio. And its ease of use and portability allows you to take it anywhere inspiration may strike you.

Ideal for the traveling musician or the project studio, the G-Track includes a heavy-duty mic stand, USB cable and specially developed audio cables to connect any musical instrument with a standard 1/4" output to the G-Track. The G-Track ships with Cakewalk® Sonar LE and works brilliantly with Apple's GarageBand.

### FEATURES

- Large, 19mm diaphragm studio condenser mic
- USB audio interface with 16-bit, 48kHz resolution
- Plugs directly into any computer with a USB input, no drivers required
- Compatible with most computer-based digital audio workstation software
- Supercardioid pickup pattern
- Smooth, flat frequency response of 20Hz–16kHz
- 1/8" stereo input for mono instruments (guitar, bass, etc.) and stereo line level devices (MP3 players, keyboards, etc.)
- 1/8" stereo headphone jack for no latency monitoring
- Input and Direct Monitor selector switches
- Volume, Instrument and Mic level controls
- Dual color Power/Clip LED
- Solid, die-cast construction with heavy gauge mesh grill
- Includes desktop mic stand, mic clip, and complete cable set (guitar cable, headphone extension, stereo line with RCA adapters and USB cable)
- Bundled with Cakewalk® Sonar LE music production software
- Optional shockmount (SP04) available

### G-TRACK

UPC .....	809164012542
SKU .....	SAGM1U
HEIGHT .....	7.5"
WIDTH .....	6.5"
DEPTH .....	4"
WEIGHT .....	6.6lb
MASTER CARTON QUANTITY: 6	
<b>* DIMENSIONS AND WEIGHT BOXED</b>	

# **SAMSON**

# Q1U

## Dynamic USB Microphone



Samson's Q1U delivers pristine audio quality and convenience with high-quality components, handheld design and USB interface. The Q1U is USB compatible with any Mac or PC, as well as most DAW software programs, including GarageBand. Its supreme ability to produce pristine audio recordings with ease and mobility, along with a desktop mic stand, mic clip, USB cable and carry pouch also included, makes the Q1U a most valuable addition to any studio, classroom, or office.

The Q1U features a smooth sounding neodymium element, capable of handling high SPL, cleverly interfaced to an on-board high quality microphone pre-amp, high-quality A/D converter and USB output. The supercardioid pickup pattern provides smooth, flat frequency and a fast transient response, insuring a precise reproduction with linear characteristics from bottom to top. Capturing audio at 16-bit resolution up to 48kHz sampling rate, the Q1U offers the accuracy you need to be sure that what you hear is what you get.

The Q1U is perfect for any computer recording application, but its handheld functionality offers additional solutions for anyone who records audio, particularly musicians, podcasters, academic groups, and business professionals.

### FEATURES

- Plug-and-play, no driver installation required
- Compatible with most computer-based digital audio workstation software
- High SPL neodymium element
- Supercardioid pickup pattern
- 16-bit, 44.1/48kHz resolution
- Smooth, flat frequency response of 50Hz–16kHz
- Includes desktop mic stand, mic clip, USB cable and carry pouch
- Samson Sound Deck Noise Cancellation Software (Mac OS X/Windows) available for purchase



### Q1U

UPC .....	809164006657
SKU .....	SAQ1U
HEIGHT .....	8.5"
WIDTH .....	5.5"
DEPTH .....	3.5"
WEIGHT .....	2.08lb
MASTER CARTON QUANTITY: 12	

\* **DIMENSIONS AND WEIGHT BOXED**

# **SAMSON**

# Q2U

## Recording Pak



The Q2U brings digital and analog together in one convenient microphone. Finally, a high-quality handheld mic to meet all your live sound and digital recording needs. Take the Q2U to your gig for an exceptional live performance then take it home to record any new ideas right to your computer. Whether your passion is recording or performing, this mic has you covered.

The Q2U is a dynamic handheld microphone that features both an XLR output and a USB I/O, so it can plug directly into any live sound console or any computer with a USB input. And the microphone's On/Off switch lets you control the audio to the XLR output, allowing you to perform in a live setting and record to a computer simultaneously.

This revolutionary mic also features a built-in 3.5mm stereo headphone jack output with volume control for no-latency monitoring during recording. Plus, a cardioid pickup pattern and a high-quality A/D converter with a 16-bit, 48kHz sampling rate ensure accurate, detailed sound reproduction. It's also compatible with most computer based digital audio workstations, so your recordings can be developed with enhanced control and functionality.

As a perfect complement to such a great recording microphone, the Q2U Pak also includes a pair of HP20 stereo headphones so you can mix, monitor and listen with comfort and accuracy. The HP20's closed ear design and 40mm full-range drivers offer professional performance in any listening application.

## FEATURES

### Q2U Microphone

- High-quality dynamic handheld microphone with XLR and USB I/O
- XLR output plugs directly into any console
- Plugs directly into any computer with a USB input
- 3.5mm stereo headphone jack output with volume control for no-latency monitoring
- On/Off switch controls audio to XLR output
- High-quality A/D converter with 16-bit, 48kHz sampling rate
- Cardioid pickup pattern
- Samson Sound Deck Noise Cancellation Software (Mac OS X/Windows) available for purchase

### HP20 Headphones

- Stereo headphones for general listening
- Closed ear design with 40mm full-range drivers
- Frequency response of 20Hz–20kHz
- 32-ohm impedance
- Comfortable, adjustable headband
- Cable (2.5m) includes volume control
- 1/8" to 1/4" adapter included



### Q2U

UPC .....	809164009665
SKU .....	SAQ2U
HEIGHT .....	11.25"
WIDTH .....	8"
DEPTH .....	4"
WEIGHT .....	2.5lb
MASTER CARTON QUANTITY: 20	
* DIMENSIONS AND WEIGHT BOXED	

# SAMSON®

# UB1

## USB Boundary Microphone



In light of the remarkable success of our USB microphones, Samson introduces the new UB1 USB boundary microphone. The UB1 is a surface-mount condenser microphone featuring an omnidirectional pickup pattern and USB connectivity for easy recording directly to your computer. Since the UB1 is a class compliant USB device, it is compatible with both Mac OS and Windows.

The UB1 can be placed on a conference table, podium, alter or can be mounted using the keyhole mounting points. Because of its low-profile design, the UB1 allows for inconspicuous placement in any setting and will offer professional-grade recordings on either a desktop or laptop computer. The solid zinc body and sturdy steel grill construction make the UB1 a dependable tool for conference rooms, houses of worship, courtrooms, classrooms or anywhere else high quality computer recording is needed.

### FEATURES

- Plug-and-play operation on Mac OS and Windows
- 16-bit, 44.1-48kHz sample rates
- Miniature, low-profile design
- Omnidirectional pickup pattern
- 10' USB cable included
- Ideal for recording meetings, conferences or creating podcasts
- Sleek black finish
- Samson Sound Deck Noise Cancellation Software (Mac OS X/Windows) available for purchase

### UB1

UPC .....	809164013891
SKU .....	SAUB1
HEIGHT .....	9"
WIDTH .....	5.75"
DEPTH .....	1.75"
WEIGHT .....	1lb
MASTER CARTON QUANTITY: 24	

\* DIMENSIONS AND WEIGHT BOXED

# **SAMSON®**

# STAGE X1U

Digital Wireless USB Microphone



Samson's X1U brings wireless freedom to your computer recordings. Perfect for capturing lectures, podcasts and audio for YouTube, Samson's Stage X1U is also the ideal wireless audio solution for Skype, FaceTime, Google Hangouts and voice recognition software.

With up to 100' of operating range between the HXD1 handheld dynamic microphone transmitter and the RXD1 USB receiver (connects directly to your computer), the X1U provides users with plenty of room to work wirelessly. The HXD1 handheld dynamic microphone transmitter features Samson's Q6 mic capsule for natural, detailed vocals. The capsule is internally shock-mounted to reduce ambient noise and vibrations caused by handling and movement. The HXD1 transmitter offers eight hours of battery using two AA batteries (not included), while the RXD1 receiver is powered by your computer or tablet. Using the included tripod stand and mic clip, the Stage X1U makes for a convenient desktop setup.

With the Stage X1U Digital Wireless USB Microphone, Samson invites you take your computer audio into the wireless future.

## FEATURES

- Record wirelessly via USB to your Mac or Windows computer
- Ideal for computer recording, podcasting, lectures and more
- Compatible with most computer-based digital audio software
- HXD1 handheld dynamic microphone transmitter with Samson Q6 mic capsule
- RX1 USB receiver connects directly via USB
- Transmitter offers eight hours of battery life using two AA batteries (not included)
- 1-touch Mute function, adjustable Volume controls
- 100' wireless range from transmitter to receiver
- Works with iPad via Apple iPad Camera Connection Kit (30-pin) or Lightning USB Camera Adapter
- Use with Samson Expedition Series Portable PAs that feature USB Wireless ports
- Includes tripod stand and mic clip



Includes HXD1 handheld dynamic microphone transmitter, RX1 USB receiver, tripod stand and mic clip



Lectures / presentations



Perfect for use with select Samson Expedition Series Portable PAs



Podcasts / video conferencing

## STAGE X1U

UPC.....8091644215547

SKU.....SWX1UQ6

HEIGHT.....11.5"

WIDTH.....6.25"

DEPTH.....3"

WEIGHT.....TBD

MASTER CARTON QUANTITY: TBD

**\* DIMENSIONS AND WEIGHT BOXED**

# **SAMSON**



# SAMSON SOUND DECK

## Noise Cancellation Software



Q1U Q2U C03U C01U C01U PRO



METEOR MIC METEORITE GO MIC UB1

The Samson Sound Deck Noise Cancellation Software is the perfect software accessory for Samson's critically acclaimed line of portable and desktop USB microphones, including Go Mic, Meteor Mic, Meteorite, C01U, C01U Pro, C03U, Q1U, Q2U and UB1. Powered by state-of-the-art digital audio algorithms, Samson Sound Deck greatly enhances computer communications and vocal recordings when using Skype™, FaceTime®, Google Voice™ and other VoIP services in noisy real-world home, office and outdoor environments.

Available for purchase/download from Samson's website in both Mac and Windows versions, Samson Sound Deck saves countless hours in post editing by eliminating repetitive noises, including power supply hum, computer fan whine and other types of background chatter, from your initial recordings. This increases the signal-to-noise ratio so only clear and detailed audio is sent to your preferred communication or recording software. Samson Sound Deck is compatible with most major DAWs and recording software, allowing for adjustments to be made to your audio with no additional latency.

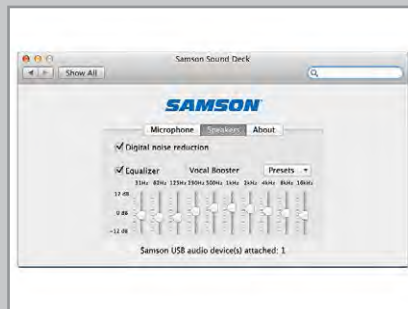
The Windows version of Samson Sound Deck provides Samson USB microphones that have headphone outputs (Go Mic, Meteor, C01U Pro, Q2U) with echo cancellation to enhance the listening experience from speakers or headphones, as well as a 10-band graphic EQ for mastering your output. A built-in audio recorder with simple file export functionality is also provided.

\* Samson Sound Deck is available for free with the purchase of Go Mic Direct and Go Mic Connect

\*\* Samson Sound Deck is not compatible with G-Track USB Condenser Mic with Audio Interface



Samson Sound Deck Noise Cancellation Software (Windows) available for purchase



Samson Sound Deck Noise Cancellation Software (Mac OS X) available for purchase

# **SAMSON**

# Q7 / Q8

## Dynamic Microphones



Samson's Q7 and Q8 Professional Dynamic Vocal Microphones bring a high level of accuracy and audio performance to live and instrument applications. Using state-of-the-art microphone technology, these mics are engineered to the finest detail to provide the ultimate in sound reproduction and professionalism.

The heart of the Q7 and Q8 stems from the wide dynamic range produced by their neodymium dynamic mic elements. These mics both feature a supercardioid pickup pattern with excellent off-axis rejection. This enables the Q7 and Q8 to pick up all the nuances of any performance with maximum volume and clarity, while reducing feedback and unwanted signals not originating in front of them.

With a rugged die-cast body and hardened steel grill, along with a multi-axis, shock-mounted capsule for minimizing handling noise, Samson's Q7 and Q8 Professional Dynamic Vocal Microphones provide reliable performance in even the most demanding environments.

### FEATURES

#### Q7

- Outstanding microphone for professional live and studio applications
- Neodymium dynamic mic element for wide dynamic range
- High output, low impedance design
- Supercardioid pickup pattern with excellent off-axis rejection
- Smooth frequency response of 80Hz-12kHz
- Handles high SPLs of up to 147dB for close miking situations
- Multi-axis, shock-mounted capsule minimizes handling noise
- Rugged die cast body, hardened steel grill
- Includes mic clip and carry case

#### Q8

- Premium microphone for professional live and studio applications
- Neodymium dynamic mic element for wide dynamic range
- High output, low impedance design
- Supercardioid pickup pattern with excellent off-axis rejection
- Smooth frequency response of 50Hz-16kHz
- Handles high SPLs of up to 150dB for close miking situations
- Multi-axis, shock-mounted capsule minimizes handling noise
- Rugged die cast body, hardened steel grill
- Includes mic clip and carry case

#### Q7

UPC .....	809164003168
SKU .....	SAQ7
HEIGHT .....	12"
WIDTH .....	4.75"
DEPTH .....	3.25"
WEIGHT .....	1.75lb
MASTER CARTON QUANTITY: 12	

#### Q8

UPC .....	809164005803
SKU .....	SAQ8
HEIGHT .....	12"
WIDTH .....	4.75"
DEPTH .....	3.25"
WEIGHT .....	1.75lb
MASTER CARTON QUANTITY: 12	

\* DIMENSIONS AND WEIGHTS BOXED

# **SAMSON®**

# Q4 / Q6

## Dynamic Microphones



Samson's Q4 and Q6 Dynamic Microphones bring accuracy and audio performance to a variety of applications, including miking vocals, guitar cabinets, drums and more. Designed for accuracy, as well as durability, these mics are a solid performer no matter the environment.

Extremely versatile, the Q4 and Q6 are equipped to handle high SPLs, allowing live vocals to sound huge and crystal clear. They're also great for close miking instruments such as snare drums, guitar amps and more.

With a rugged die-cast body and hardened steel grill, along with a multi-axis, shock-mounted capsule for minimizing handling noise, Samson's Q4 and Q6 Dynamic Microphones provide reliable performance. In addition, both mics feature an On/Off switch for increased on-stage control.

### FEATURES

#### Q4

- Ideal microphone for live vocals, presentations and instrument miking
- Neodymium dynamic mic element for wide dynamic range
- High output, low impedance design
- Supercardioid pickup pattern with excellent off-axis rejection
- Smooth frequency response of 80Hz-12kHz
- Handles high SPLs for close miking situations
- Multi-axis, shock-mounted capsule minimizes handling noise
- On/Off switch for on-stage control
- Gold-plated XLR connector
- Rugged die cast body, hardened steel grill
- Includes XLR cable, mic clip and carry case

#### Q6

- High-level microphone for professional live and studio applications
- Neodymium dynamic mic element for wide dynamic range
- High output, low impedance design
- Supercardioid pickup pattern with excellent off-axis rejection
- Smooth frequency response of 50Hz-15kHz
- Handles high SPLs of up to 134dB for close miking situations
- Multi-axis, shock-mounted capsule minimizes handling noise
- On/Off switch for on-stage control
- Gold-plated XLR connector
- Rugged die cast body, hardened steel grill
- Includes XLR cable, mic clip and carry case

#### Q4

UPC .....	809164005780
SKU .....	SAQ4CL
HEIGHT .....	13"
WIDTH .....	10.5"
DEPTH .....	3.5"
WEIGHT .....	2.05lb
MASTER CARTON QUANTITY: 12	

#### Q6

UPC .....	809164008330
SKU .....	SCQ6
HEIGHT .....	11"
WIDTH .....	5.25"
DEPTH .....	2.75"
WEIGHT .....	1.75lb
MASTER CARTON QUANTITY: 24	

**\* DIMENSIONS AND WEIGHTS BOXED**

# **SAMSON®**

# VP10 / VP10X

## Microphone Packs



Samson's VP10 and VP10X Microphone Packs offer all the microphone essentials for vocalists and presenters alike in two convenient packages.

Both the VP10 and VP10X feature Samson's R21S, a handheld dynamic microphone that excels in both vocal and presentation applications. Equipped with a linear frequency response for superior reproduction, the R21S is designed to withstand high SPLs. Extremely sensitive, it employs a tight cardioid pickup pattern to reduce feedback. A special shock-mounted element minimizes handling noise and provides additional protection.

Each package also includes an MK10 Lightweight Boom Stand, which combines the crucial elements of lightweight durability with an attractive and functional design. Featuring a sleek black finish, this solid steel-constructed tripod boom stand folds up for easy transport anywhere you need it.

An 18' microphone cable with 1/4" to XLR connectors completes the VP10 package, while the VP10X provides an 18' microphone cable with XLR to XLR connectors. They're the perfect starter packages for vocalists, presenters and others.

### FEATURES

#### R21S Dynamic Microphone

- Outstanding audio quality for vocals and presentations
- Cardioid pickup pattern
- Convenient On/Off switch
- Gold-plated XLR connector
- Mic clip included

#### MK10 Lightweight Boom Stand

- Lightweight, collapsible tripod design
- Roadworthy, steel construction
- Sleek black finish

#### Microphone Cable

- **VP10:** 1/4" to XLR connectors
- **VP10X:** XLR to XLR connectors
- 18' low noise design



**VP10:** Sold with 1/4" to XLR connectors



**VP10X:** Sold with XLR to XLR connectors

### VP10

UPC .....	809164017400
SKU .....	SAVP10
HEIGHT .....	25.25"
WIDTH .....	4.5"
DEPTH .....	3.75"
WEIGHT .....	5lb

### VP10X

UPC .....	809164017417
SKU .....	SAVP10X
HEIGHT .....	25.25"
WIDTH .....	4.5"
DEPTH .....	3.75"
WEIGHT .....	5lb

\* **DIMENSIONS AND WEIGHTS BOXED**

\*\* **MASTER CARTON QUANTITY (ALL): 6**

# **SAMSON**

# MTR SERIES

## Condenser Microphones



Samson's all-new MTR Series Condenser Microphones offer pro-level options for a variety of live and studio situations. With a sharp new look and superior sound reproduction, this line solidifies Samson's commitment to bringing you the very best microphones.

### MTR101 CONDENSER MICROPHONE FEATURES

- Large, 1" diaphragm studio condenser microphone
- Cardioid pickup pattern for increased isolation
- Smooth, extended frequency response of 20Hz–20kHz
- Low self-noise, wide dynamic range perfect for modern digital recording
- Handles high SPLs of up to 137dB
- Internally shock-mounted capsule minimizes touch noise
- Rugged die cast construction
- Available with (MTR101A) or without (MTR101) accessory package, including pop filter and shockmount

### MTR201 CONDENSER MICROPHONE FEATURES

- Large, 1" gold-sputtered diaphragm studio condenser microphone
- Cardioid pickup pattern for increased isolation
- Smooth, extended frequency response of 20Hz–20kHz
- Low self-noise, wide dynamic range perfect for modern digital recording
- Handles high SPLs of up to 132dB
- 10db attenuation switch handles ultra-high SPLs
- Internally shock-mounted capsule minimizes touch noise
- Rugged die cast construction
- Includes pop filter, shockmount and carry case

### MTR231 MULTI-PATTERN CONDENSER MICROPHONE FEATURES

- Dual large, 1" gold-sputtered diaphragm studio condenser microphone
- Three selectable pickup patterns – cardioid, omnidirectional and bidirectional (figure-8)
- Smooth, extended frequency response of 20Hz–20kHz
- Low self-noise, wide dynamic range perfect for modern digital recording
- Handles high SPLs of up to 134dB
- 10db attenuation switch handles ultra-high SPLs
- Internally shock-mounted capsule minimizes touch noise
- Rugged die cast construction
- Includes pop filter, shockmount and carry case



### MTR101

UPC .....	809164014348
SKU .....	SAMTR101
HEIGHT .....	9.5"
WIDTH .....	6.75"
DEPTH .....	2.75"
WEIGHT .....	1.55lb
MASTER CARTON QUANTITY:	12

### MTR101A

UPC .....	809164014348
SKU .....	SAMTR101A
HEIGHT .....	11.25"
WIDTH .....	10"
DEPTH .....	3.25"
WEIGHT .....	2.4lb
MASTER CARTON QUANTITY:	6

### MTR201

UPC .....	809164014423
SKU .....	SAMTR201
HEIGHT .....	11"
WIDTH .....	11.75"
DEPTH .....	4.25"
WEIGHT .....	4.4lb
MASTER CARTON QUANTITY:	6

### MTR231

UPC .....	809164014430
SKU .....	SAMTR231
HEIGHT .....	11"
WIDTH .....	11.75"
DEPTH .....	4.25"
WEIGHT .....	4.5lb
MASTER CARTON QUANTITY:	6

\* DIMENSIONS AND WEIGHTS BOXED

# SAMSON®

# VR88

## Velocity Ribbon Microphone



Samson's VR88 Velocity Ribbon Microphone combines traditional ribbon technology with the precision and versatility of advanced active electronics. It's perfect for capturing warm, natural audio in a variety of live and studio applications, such as miking vocals, acoustic instruments, electric guitars and even overhead miking drums.

The VR88 features a low mass, 2.5-micron aluminum ribbon suspended within an intense neodymium field, producing a warm and natural response that is silky smooth from top to bottom. The microphone is equipped with a bidirectional (figure-8) pickup pattern with excellent off-axis rejection. The VR88's FET amplifier and transformer provide the high output and stabilized source impedance necessary for compatibility with any mic pre amplifier. In addition, The VR88 produces a smooth, extended frequency response and is capable of handling high SPLs of up to 137dB, making it an excellent choice for miking vocals, acoustic instruments and even electric guitars.

The quality of the VR88 compares to the most highly regarded classic ribbon microphones found in top recording studios. For this reason, its rugged die cast constructed body, as well as a shock mount, comes in a protective carry case.

### FEATURES

- Low mass, 2.5-micron aluminum ribbon microphone
- Ideal for miking soft, delicate sounds or warming up digital recordings
- Strong neodymium magnets, precision electronics provide increased sensitivity, low self-noise
- Bidirectional (figure-8) pickup pattern with excellent off-axis rejection
- Smooth frequency response of 30Hz–16kHz
- Handles high SPLs of up to 137dB
- FET amplifier and transformer provide increased output, stabilized source impedance for compatibility with any mic preamp
- Rugged die-cast construction
- Includes shock mount and carry case



### VR88

UPC .....	809164014447
SKU .....	SAVR88A
HEIGHT .....	11.5"
WIDTH .....	11.5"
DEPTH .....	6.5"
WEIGHT .....	6.75lb

MASTER CARTON QUANTITY: 2

\* DIMENSIONS AND WEIGHT BOXED

# **SAMSON**

# C01/SR850

## Condenser Mic/Studio Reference Headphones



### C01 Condenser Microphone

Great for recording vocals, acoustic instruments and for use as overhead drum mics, the Samson C01 large diaphragm condenser microphone is accurate, detailed, and smooth with warm bass and extended top end.

This sturdy microphone has a large 19mm diaphragm that produces a smooth flat frequency response. It features a heavy gauge mesh grill screen, a gold plated XLR connector and an LED indicating 48V phantom power. The unit includes a swivel stand mount and an optional SPO1 shockmount is also available.

### SR850 Studio Reference Headphones

Samson's SR850 Professional Studio Reference Headphones offer an outstanding listening solution for musicians, sound engineers and general music enthusiasts alike. With solid bass response, ultra-clear highs and on open ear design, the SR850s ensure complete comfort and accurate headphone monitoring.

These headphones offer open ear design for enhanced ambient listening environment, allowing appropriate bleed for better stereo imaging and a wider sound stage. The 50mm drivers also offer exceptional sound reproduction and wide dynamic range to instill confidence in your final mix or simply provide outstanding sound quality for your general listening pleasure.

With a self-adjusting headband for a secure, natural fit, the SR850s provide total comfort for extended studio sessions. In addition, an 1/8" to 1/4" gold plated adapter is included for convenience and flexibility.

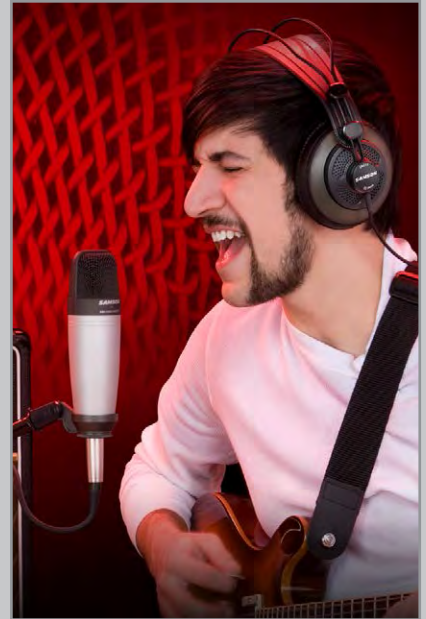
## FEATURES

### C01

- Large 19mm diaphragm
- Cardioid pickup pattern
- Heavy gauge mesh grill
- Gold-plated XLR connector
- LED indicates 48V Phantom Power
- Smooth, flat frequency response
- Swivel stand mount

### SR850 Professional Studio Reference Headphones

- Open-ear design for maximum isolation
- 50mm drivers for exceptional reproduction and wide dynamic range
- 10Hz–30kHz frequency response
- 32Ω impedance
- Self-adjusting headband for secure, comfortable fit
- 1/8" to 1/4" gold-plated adapter included



### C01/SR850

UPC .....	809164009740
SKU .....	SAC01850
HEIGHT .....	8.5"
WIDTH .....	8.5"
DEPTH .....	4.5"
WEIGHT .....	2.25lb
MASTER CARTON QUANTITY: 12	

\* DIMENSIONS AND WEIGHT BOXED

# SAMSON®

# 7KIT

## 7-Piece Drum Mic Set



Samson's 7Kit 7-Piece Drum Mic Set offers everything you need to mic a full drum kit. As each drum kit is unique, the 7Kit has been designed to provide drummers with a complete solution for capturing the sound they crave.

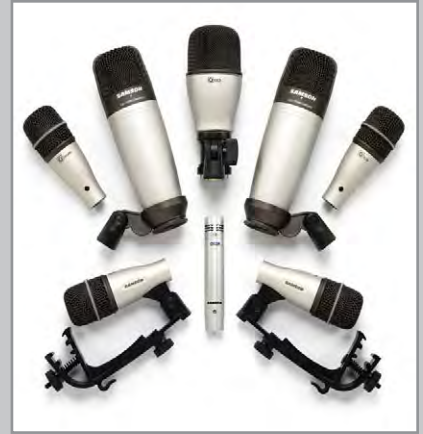
The 7Kit includes a QKick mic for the bass drum, a QSnare mic for the snare and three QTom mics for the tom-toms. Each mic element is constructed with neodymium and precise capsule porting, producing a carefully contoured frequency response for the specific drum. Thunderous low end from the bass drum, crisp and punchy attack from the snare and thick, defined tom-tom sounds are easily captured with this powerful collection of percussion mics. Also, a matched pair of C02 pencil condenser mics has been included to capture the brilliance of your cymbals and the overall ambient sound of your drum set.

In addition to great sound, the Q mics offer integral mounting systems for optimal mic placement. The QKick comes with a swivel mount that can be attached to any standard mic stand, while the QSnare and QToms feature mounting clips that easily install on any standard drum rim. These multi-adjustable clips allow you to carefully position the mics without using external mic stands.

Thanks to its incredible sound capabilities and versatile mounting solutions, the 7Kit 7-Piece Drum Mic Set is what drummers use to elevate their performance live and in the studio.

### FEATURES

- 7-piece drum mic set
- One QKick mic with mic stand swivel mount
- One QSnare mic with rim clip
- Three QTom mics with rim clips
- Two C02 pencil condenser mics with shockmount clips
- Gold-plated XLR connectors
- Road case included



### 8KIT 8-Piece Drum Mic Set

UPC ..... 809164005124

SKU ..... SADK8



### 5KIT 5-Piece Drum Mic Set

UPC ..... 809164003441

SKU ..... SADK5

### 7KIT 7-Piece Drum Mic Set

UPC ..... 809164003458

SKU ..... SADK7

HEIGHT ..... 11.75"

WIDTH ..... 14.5"

DEPTH ..... 3.5"

WEIGHT ..... 5.9lb

MASTER CARTON QUANTITY: 4

\* DIMENSIONS AND WEIGHT BOXED

# **SAMSON**



# LM10

## Omnidirectional Lavalier Microphone



Lightweight clip design for placement on ties, lapels, etc.

Samson's LM10 Omnidirectional Lavalier Microphone is a low profile, micro-miniature condenser microphone with a 3mm capsule that provides outstanding audio reproduction and a lightweight clip design for inconspicuous/unobtrusive placement, making it perfect for presentation, fitness and other vocal applications. And with four included adapters, the LM10 can be used with most popular wireless transmitters.

Thanks to its omnidirectional pickup pattern, the LM10's off-axis frequency response is linear, resulting in a clear and articulate reproduction regardless of the position of the capsule relative to the sound source. Plus, its lightweight clip design offers low profile, nearly invisible placement on ties, lapels and more.

Though the LM10 is particularly well suited for use with Samson wireless systems, the four included adapters enable the microphone to be used with most other brand's wireless transmitters as well. The microphone is also bundled with four windscreens for reducing occurrences of popping and wind noise, a clothing cable clip for inconspicuous/unobtrusive placement of the cable and a protective carry case for the entire system.

Manufactured with extreme care and the highest quality components, the Samson LM10 delivers exceptionally clear, articulate sound with reliable performance in an extremely low profile design.

### FEATURES

- Low profile, micro-miniature condenser lavalier microphone
- Outstanding audio quality for broadcast, presentation, house of worship, theater and other vocal applications
- 3mm mic capsule
- Omnidirectional pickup pattern
- Lightweight clip design for placement on ties, lapels, etc.
- Includes cable adapters (3.5mm, Hirose 4-Pin, Switchcraft TA3F, Switchcraft TA4F) for compatibility with most popular wireless transmitters
- Windscreens, clothing cable clip and carry case also included

### LM10

UPC .....	809164015567
SKU .....	SALM10B
HEIGHT .....	2.25"
WIDTH .....	9.25"
DEPTH .....	5.5"
WEIGHT .....	1.05lb
MASTER CARTON QUANTITY: 20	

\* DIMENSIONS AND WEIGHT BOXED

# **SAMSON**

# SE10 / SE50

## Earset Microphones



Adapters and carry case included



SE50: Micro-miniature (2.5mm capsule)

Samson's SE10 (miniature 3mm capsule) and SE50 (micro-miniature 2.5mm capsule) Earset Microphones are low profile condenser microphones that provide outstanding audio reproduction and a moisture resistant design, making them perfect for presentation, fitness and other vocal applications. Each packaged with four included adapters, the SE10 and SE50 can be used with most popular wireless transmitters.

Both the SE10 and SE50 can be easily shaped to fit the left or right ear and their unique retaining bands hold them in place even when used in fitness applications. Plus, their omnidirectional pickup patterns result in clear and articulate reproduction, regardless of the position of the capsules relative to the sound sources. Their water resistant coating also provides protection from sweat and other moisture during high-energy performances.

Though the SE10 and SE50 are particularly well suited for use with Samson wireless systems, both included four adapters that enable them to be used with most other brand's wireless transmitters. In addition, each microphone is bundled with four windscreens for reducing occurrences of popping and wind noise, a clothing cable clip for inconspicuous/unobtrusive placement of the cable and a protective carry case for the entire system.

### FEATURES

- **SE10:** Miniature (3mm capsule) condenser microphone for nearly invisible use
- **SE50:** Micro-miniature (2.5mm capsule) condenser microphone for nearly invisible use
- Outstanding audio quality for presentation, fitness and other vocal applications
- 3mm mic capsule
- Omnidirectional pickup pattern
- Easily adjusts to fit left or right ear, retaining band holds mic in place
- Moisture resistant coating
- Detachable cable
- Includes cable adapters for compatibility with most popular wireless transmitters
- Windscreens, clothing cable clip and protective carry case also included

### SE10

UPC .....	809164010470
SKU .....	SASE10
HEIGHT .....	2.25"
WIDTH .....	9.25"
DEPTH .....	5.5"
WEIGHT .....	1.1lb

### SE50

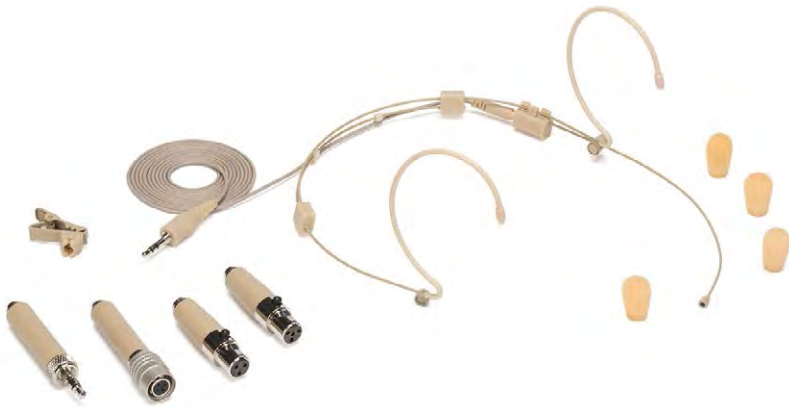
UPC .....	809164009351
SKU .....	SASE50T
HEIGHT .....	2.25"
WIDTH .....	9.25"
DEPTH .....	5.5"
WEIGHT .....	1.05lb

\* **DIMENSIONS AND WEIGHTS BOXED**  
\*\* **MASTER CARTON QUANTITY (ALL): 20**

# **SAMSON**

# DE10 / DE50

## Headset Microphones



Samson's DE10 (miniature 3mm capsule) and DE50 (micro-miniature 2.5mm capsule) Headset Microphones are low profile condenser microphones that provide outstanding audio reproduction and a double ear, moisture resistant design, making them perfect for presentation, fitness and other vocal applications. Each packaged with four included adapters, the DE10 and DE50 can be used with most popular wireless transmitters.

The DE10 and DE50's omnidirectional pickup patterns result in clear and articulate sound reproduction, regardless of the position of the capsules relative to the sound sources. Their water resistant coating also provides protection from sweat and other moisture during high-energy performances. The unique double ear headset design of both the DE10 and DE50 allows for the mics to be held in place even when used in fitness applications. In addition, these headsets fold up to allow for easy placement in their system's included protective carry case.

Though the DE10 and DE50 are particularly well suited for use with Samson wireless systems, both included four adapters that enable them to be used with most other brand's wireless transmitters. In addition, each microphone is bundled with four windscreens for reducing occurrences of popping and wind noise, as well as a clothing cable clip for inconspicuous/unobtrusive placement of the cable.

### FEATURES

- **DE10:** Miniature (3mm capsule) condenser microphone for nearly invisible use
- **DE50:** Micro-miniature (2.5mm capsule) condenser microphone for nearly invisible use
- Double ear design holds microphone securely in place, folds up for maximum portability
- Outstanding audio quality for presentation, fitness and other vocal applications
- Omnidirectional pickup pattern
- Moisture resistant coating
- Detachable cable
- Includes four different adapters for compatibility with most popular wireless transmitters
- Windscreens, clothing cable clip and protective carry case also included



Double ear design



Adapters and carry case included



DE50: Micro-miniature (2.5mm capsule)

### DE10

UPC .....	809164016960
SKU .....	SADE10
HEIGHT .....	8.75"
WIDTH .....	7"
DEPTH .....	1"
WEIGHT .....	0.25lb

### DE50

UPC .....	809164017240
SKU .....	SADE50
HEIGHT .....	8.75"
WIDTH .....	7"
DEPTH .....	1"
WEIGHT .....	0.25lb

\* DIMENSIONS AND WEIGHTS BOXED

\*\* MASTER CARTON QUANTITY (ALL): 20

# SAMSON®



# PORTABLE PA

Expedition Series



# EXPEDITION ESCAPE

Rechargeable Portable PA with *Bluetooth*®



Samson's Expedition Escape Rechargeable Portable PA provides incredible sound in any environment. Weighing only 8.5 pounds, this ultra-portable device combines pristine audio performance with convenient *Bluetooth* connectivity for wireless audio streaming. It's the ideal sound system for BBQs, parties, outdoor sporting events, tailgates, presentations, fitness classes and anywhere else loud, full-range sound is desired.

Packed with high-quality components to ensure an optimal music listening experience, the Expedition Express offers a 2-way speaker design with a 6" subwoofer for deep pounding bass, while its 1" high frequency driver transmits the finer details of your favorite tracks. The system is also *Bluetooth*-compatible, allowing you to wirelessly stream music from your smartphone, tablet or laptop up to 50' away from the Expedition Escape. The unit's 2-channel mixer features a 1/4" input with its own dedicated volume control for a variety of live performance applications, including use with dynamic microphones. In addition, the Expedition Escape has an 1/8" input for directly connecting MP3 players, keyboards and more.

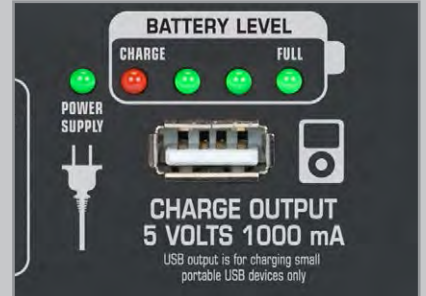
The Expedition Escape's internal rechargeable battery powers the system for up to 20 hours of continuous use on a full charge. You can also use its built-in USB port to charge phones and tablets while simultaneously enjoying music. Finally, an integrated carry handle makes the Expedition Escape perfect for activities like trips to the beach, camping, boating, picnics and anywhere else music can enhance the moment.

## FEATURES

- All-in-one, lightweight PA system that weighs 8.5lb
- Internal rechargeable battery for 20 hours of continuous use
- *Bluetooth* connectivity to wirelessly stream music
- 2-way speaker enclosure with 6" woofer
- 1" high frequency driver
- 2-channel mixer
- 1/4" input for microphones and other line level devices
- 1/8" stereo Aux input for stereo line level devices (MP3 players, keyboards, etc.)
- Built-in USB port to charge phones and tablets
- Integrated carry handle
- 1 3/8" speaker stand mount



Rear panel



Built-in USB port to charge phones and tablets



*Bluetooth* connectivity to wirelessly stream music



Optional LS40 Speaker Stand

## EXPEDITION ESCAPE

UPC .....	809164016731
SKU .....	SAXPESC
HEIGHT .....	10.5"
WIDTH .....	10.5"
DEPTH .....	15.75"
WEIGHT .....	12lb

MASTER CARTON QUANTITY: 1

\* **DIMENSIONS AND WEIGHT BOXED**

# SAMSON®

# EXPEDITION EXPRESS

Rechargeable Portable PA with *Bluetooth*<sup>®</sup>



Samson's Expedition Express Rechargeable Portable PA is packed with incredible features, including Bluetooth connectivity and a built-in 3-channel mixer. It also comes complete with a wired handheld dynamic microphone for delivering impromptu performances and professional presentations in any environment. Such versatility, combined with clean, crisp audio, makes the Expedition Express an all-in-one solution for classrooms, conferences, tour groups, parties, as well as a variety of outdoor applications.

Ensuring pristine, full-range sound, the Expedition Express employs a 2-way speaker design with a 6" woofer and a 1" high frequency driver. The unit's 3-channel mixer features multiple input options with separate level controls, including an XLR-1/4" combo channel (included dynamic handheld mic and other mic/line level devices), a 1/4" channel (guitars and other line level devices) and a Bluetooth channel to wirelessly stream music from your smartphone, tablet or laptop. The Bluetooth channel even offers an 1/8" input for directly connecting MP3 players. The Expedition Express also has a Line Out to cascade multiple systems together and expand your sound. In addition, a 2-band EQ (Bass and Treble control) on the master output allows you to tweak your sound to appropriately match your specific setting and audience.

The Expedition Express is extremely lightweight and even offers a convenient integrated top carry handle. These features, along with its internal rechargeable battery that offers up to 20 hours of continuous use, let you bring the Expedition Express anywhere.

## FEATURES

- All-in-one, lightweight PA system that weighs 10lb
- *Bluetooth* connectivity to wirelessly stream music
- Includes wired handheld dynamic microphone
- Internal rechargeable battery for up to 20 hours of continuous use
- 2-way speaker enclosure with 6" woofer
- 1" high frequency driver
- 3-channel mixer
- XLR-1/4" combo input for microphones and other line level devices
- 1/4" input for guitars and other line level devices
- 1/8" stereo Aux input for stereo line level devices (MP3 players, keyboards, etc.)
- Line output to cascade multiple systems together
- Bass and Treble controls
- Battery level LED indicator
- Integrated carry handle
- 1 3/8" speaker stand mount



Rear panel



*Bluetooth* connectivity to wirelessly stream music



Optional LS40 Speaker Stand

## EXPEDITION EXPRESS

UPC .....	809164014263
SKU .....	SAXP360B
HEIGHT .....	10.5"
WIDTH .....	10.5"
DEPTH .....	15.75"
WEIGHT .....	12.76lb
MASTER CARTON QUANTITY: 1	
* DIMENSIONS AND WEIGHT BOXED	

# SAMSON<sup>®</sup>

# EXPEDITION XP106 / XP106W

Rechargeable Portable PAs



Samson's Expedition XP106 and XP106w Rechargeable Portable PAs are packed with incredible features, including *Bluetooth* connectivity and built-in 4-channel mixers. Such versatility, combined with clean, crisp audio, make the XP106 and XP106w all-in-one solutions for classrooms, conferences, tour groups, parties, as well as a variety of outdoor applications.

Ensuring pristine, full range sound, the XP106 and XP106w each feature a 6" woofer and a 1" high frequency driver. A lightweight, 100-watt Class D amplifier, perfectly matched to the drivers for high efficiency and low current draw, powers each system. Their respective internal rechargeable batteries make them extremely portable, allowing for up to 20 hours of continuous use wherever great sound is needed.

The XP106 comes complete with a wired handheld dynamic microphone for delivering impromptu performances and professional presentations in any environment. Meanwhile, the XP106w includes Samson's Stage XPD1 USB Digital Wireless System, which features a wireless receiver built into a USB stick and a handheld dynamic microphone transmitter with Samson's Q6 mic capsule. With a 100' operating range (environment dependent), the Stage XPD1 frees presenters and performers from the constraints of cables when using the XP106w.

Both the XP106 and XP106w feature a 4-channel mixer with multiple input options and separate level controls, including an XLR-1/4" combo channel (microphones and other Mic/Line level devices), a 1/4" channel (guitars and other line level devices), an 1/8" channel (MP3 players, keyboards, etc.), a USB Wireless channel for use with the Stage XPD1 system and a *Bluetooth* channel to wirelessly stream music from your smartphone, tablet or laptop. They also each have a Line Out to cascade multiple systems together and expand your sound, as well as a Music/Speech switch for optimizing output EQ for speech or music playback.

## FEATURES

- All-in-one, lightweight portable PA systems
- Internal rechargeable battery for up to 20 hours of continuous use
- *Bluetooth* connectivity to connect wireless music sources
- **XP106:** Includes wired handheld dynamic microphone
- **XP106w:** Includes Stage XPD1 USB Digital Wireless System with handheld dynamic microphone (100' operating range)
- 2-way speaker enclosure with 6" woofer
- 1" high frequency driver
- Class D amplifier produces 100 watts of power
- 4-channel mixer
- XLR-1/4" combo input for microphones and other line level devices
- 1/4" input for guitars and other line level devices
- 1/8" stereo Aux input for stereo line level devices (MP3 players, keyboards, etc.)
- Line output to cascade multiple systems together
- Music/Speech switch for optimizing output EQ for speech or music playback
- USB Wireless port
- Battery level LED indicator
- Integrated carry handle
- 1 3/8" speaker stand mount



**XP106:** Includes wired handheld dynamic microphone



**XP106w:** Includes Stage XPD1 USB Digital Wireless System with handheld dynamic microphone

## EXPEDITION XP106

UPC .....	809164015963
SKU .....	SAXP106
HEIGHT .....	20"
WIDTH .....	13.5"
DEPTH .....	13.5"
WEIGHT .....	21lb

## EXPEDITION XP106W

UPC .....	809164015970
SKU .....	SAXP106W
HEIGHT .....	20"
WIDTH .....	13.5"
DEPTH .....	13.5"
WEIGHT .....	21lb

**\* DIMENSIONS AND WEIGHTS BOXED**  
**\*\* MASTER CARTON QUANTITY (ALL): 1**

# SAMSON®

# EXPEDITION XP150

150-Watt Portable PA



The Expedition XP150 offers a PA solution that combines powerful stereo sound with portability and simplicity. With its clever design, the XP150 packs up into a single unit that weighs only 24 pounds. Perfect for schools, conferences and presentations, as well as musicians and singer-songwriters, the XP150 is the ultimate in portable sound.

A removable 5-channel mixer powers the XP150 with a 150-watt (2 x 75) Class D amplifier. The mixer features three Mic/Line channels with XLR and 1/4" inputs, allowing you to connect microphones or line signals. It also includes one stereo 1/4" and 3.5mm input channel for connecting external devices like MP3 players, keyboards and more. There's also a built-in DSP to add Digital Reverb to your voice or instrument. Each channel features 2-band (bass and treble) controls.

The XP150's 2-way vented speakers give you a clean, powerful stereo sound. They produce deep bass tones, as well as pure dispersion and loud, lucid audio, through 6" low frequency drivers and custom 1" tweeters with 60° x 90° coverage. For display flexibility, these ABS, high impact plastic enclosures feature integrated 1 3/8" speaker stand mounts, as well as a kickback design for use as floor monitors.

The Expedition XP150 stands out as a complete portable PA system that is perfect for small- to medium-sized musical, educational, business and recreational applications.

## FEATURES

- Packs up into a single portable unit that weighs 24lb
- Dual 2-way speaker enclosures with 6" woofers
- 1" high frequency drivers
- Lightweight, Class D amplifier produces 150 watts (2 x 75) of stereo power
- Removable 5-channel mixer
- Three Mic/Line inputs (XLR and 1/4" jacks) for microphone, guitar and line level devices
- 1/4" and 1/8" stereo input for stereo line level devices (MP3 players, keyboards, etc.)
- Phantom power
- Bass and treble controls
- Internal digital effects processor
- Durable ABS high impact plastic construction
- Integrated 1 3/8" speaker stand mount
- Enclosures tilt back for use as floor monitors
- Speaker cables included



Presentations



Singer-songwriters



Optional SMS150 Mixer Stand Holder

## EXPEDITION XP150

UPC .....	809164012870
SKU .....	SAXP150
HEIGHT .....	18"
WIDTH .....	19"
DEPTH .....	12.5"
WEIGHT .....	27.75lb
MASTER CARTON QUANTITY: 1	
<b>* DIMENSIONS AND WEIGHT BOXED</b>	

# SAMSON®



# EXPEDITION XP308i

300-Watt Portable PA



The Expedition XP308i offers a PA solution that combines powerful stereo sound with portability and simplicity. With its clever design, the XP308i packs up into a single unit that weighs just under 40 pounds. Perfect for schools, conferences and presentations, as well as musicians and singer-songwriters, the XP308i is the ultimate in portable sound.

A removable 8-channel mixer powers the XP308i with a 300-watt (2 x 150) Class D amplifier. The mixer features four Mic/Line channels with XLR and 1/4" inputs, allowing you to connect microphones or line signals. It also includes two stereo input channels for connecting external devices like MP3 players, keyboards and more. You can even engage the phantom power switch if you are using condenser microphones. There's also built-in DSP to add Digital Reverb to your voice or instrument. Each channel features 2-band (bass and treble) controls. The XP308i's 2-way vented speakers give you a clean, powerful stereo sound. They produce deep bass tones, as well as pure dispersion and loud, lucid audio, through 8" low frequency drivers and custom 1" tweeters with 60° x 90° coverage. For display flexibility, these ABS, high impact plastic enclosures feature integrated 1 3/8" speaker stand mounts, as well as a kickback design for use as floor monitors.

For enhanced convenience and versatility, the XP308i features an onboard iPod dock that easily connects to most iPod models for seamless music playback. You can also use the iPod dock in combination with the Samson's BT30 30-Pin *Bluetooth*® Receiver (sold separately) to transform the XP308i into a *Bluetooth*-enabled system capable of streaming music wirelessly from smartphones, tablets and laptops.

## FEATURES

- Packs up onto a single portable unit that weighs just over 40lb
- Built-in iPod dock
- Dual 2-way speaker enclosures with 8" woofers
- 1" high frequency drivers
- Lightweight, Class D amplifier produces 300 watts (2 x 150) of stereo power
- Removable 8-channel mixer
- Four Mic/Line inputs (XLR and 1/4" jacks) for microphone, guitar and line level devices
- Two 1/4" and 1/8" stereo inputs for stereo line level devices (MP3 players, keyboards, etc.)
- Phantom power
- Bass and treble controls
- Two 1/4" Monitor outputs allows connection to external powered monitors
- RCA outputs for external recorders
- Internal digital effects processor
- Music/Speech switch for setting overall system EQ
- 6-segment level meter with limit indicator
- Integrated 1 3/8" speaker stand mount
- Enclosures tilt back for use as floor monitors
- Speaker cables included
- Optional BT30 30-Pin *Bluetooth* Receiver for streaming music wirelessly from smartphones, tablets and laptops



Optional BT30 30-Pin *Bluetooth* Receiver



Optional SMS308 Mixer Stand Holder

## EXPEDITION XP308I

UPC .....	809164009528
SKU .....	SAXP308I
HEIGHT .....	24.5"
WIDTH .....	26.5"
DEPTH .....	17"
WEIGHT .....	48lb
MASTER CARTON QUANTITY: 1	

\* DIMENSIONS AND WEIGHT BOXED

# SAMSON®

# EXPEDITION XP1000

1,000-Watt Portable PA



Samson's Expedition XP1000 Portable PA system is an all-in-one sound system with incredible features and tons of power that packs into a single compact design. It's perfect for live music performances, DJ sets, parties, group exercise classes, office presentations, academic lectures and anywhere else you want great sound.

The XP1000 is Bluetooth-enabled, allowing you to wirelessly stream music from your smartphone, tablet or laptop. A removable 10-channel mixer with an impressive 1,000 watt (2 x 500), lightweight Class D amplifier powers the XP1000. The mixer features four Mic/Line input channels, each with XLR and 1/4" inputs for connecting microphones or active line level instruments. It also includes three stereo input channels for connecting external devices like MP3 players, keyboards and more. Each channel features Bass and Treble controls, and the first two Mic/Line channels have a selectable compressor to even out levels while preventing overload and distortion. The XP1000 even has a USB Wireless port for use with Samson's Stage XPD1 USB Digital Wireless System (sold separately). For precise control over your sound, the XP1000 provides 16 presets of high quality DSP effects, perfectly suited for vocals. For larger applications, the XP1000 provides stereo monitor outputs with level control to use the system with additional powered speakers. In addition, the mixer has a Phantom Power switch to enable the integration of condenser microphones into your PA setup.

The XP1000's 2-way vented speakers give you a clean, powerful stereo sound. Their 10" low frequency drivers produce excellent low end punch, while the 1" high frequency drivers receive wide dispersion from 60° x 90° horns. For performance versatility, these ABS, high impact enclosures feature integrated 1 3/8" speaker stand mounts, as well as a 30° kickback design for use as floor monitors.

## FEATURES

- Packs up into a single portable unit that weighs just over 50lb
- Lightweight, Class D amplifier produces 1,000 watts (2 x 500) of stereo power
- Bluetooth connectivity to wirelessly stream music
- Dual 2-way speaker enclosures with 10" woofers
- 1" high frequency drivers
- Removable 10-channel mixer with 16 presets of 24-bit digital effects
- Bass and Treble controls on each channel
- Four Mic/Line inputs (XLR and 1/4" jacks) for microphone, guitars and other line level devices
- Three stereo channels with multiple input options (1/4", 1/8", RCA) for connecting external devices (MP3 players, keyboards, etc.)
- USB Wireless port for use with Samson's Stage XPD1 USB Digital Wireless System (sold separately)
- Phantom power for condenser microphones
- Two 1/4" Monitor outputs allow connections to external powered speakers
- Additional RCA output for external recorders
- Selectable compressor on two Mic/Line channels
- Music/Speech switch for optimizing output EQ for speech or music playback
- 6-segment level meter with limiter indicator
- Integrated 1 3/8" speaker stand mount
- 30° kickback design for using enclosures as floor monitors
- Two 25' speaker cables included



Optional SMS1000 Mixer Stand Holder

## EXPEDITION XP1000

UPC .....	809164015710
SKU .....	SAXP1000
HEIGHT .....	26"
WIDTH .....	27"
DEPTH .....	17"
WEIGHT .....	57lb

MASTER CARTON QUANTITY: 1

\* DIMENSIONS AND WEIGHT BOXED

# SAMSON®

# EXPEDITION XP112A / XP115A

## 500W 2-Way Active PA Speakers



XP112A

XP115A

Samson's Expedition XP112A and XP115A 2-Way Active PA Speakers present great options for those seeking premium sound with great value. Combining exceptional portability and power, these are ideal PA speakers for live sound setups. Perfect for bands, DJs, vocal presentations and much more, the Expedition XP112A and XP115A are versatile PA solutions for serious performers.

With 500 watts of power, the lightweight XP112A (30lb/13.5kg) and XP115A (33lb/15kg) produce a deep bass response with high-end clarity via their respective 12" and 15" extended range low frequency woofers and 1" high frequency drivers. The back panels of both these speakers offer an XLR-1/4" combo input for microphones and line level devices, as well as a contour equalization switch for customizing your sound. Each speaker also provides an XLR Link output connector for daisy chaining additional speakers to expand your PA setup.

Both speaker enclosures are constructed of solid polypropylene, ensuring roadworthy durability. The cabinet design also provides a tilt-back monitor positioning option and a 1 3/8" speaker stand mount for flexible setup. For additional convenience and portability, the XP112A and XP115A offer both top and side carry handles.

### FEATURES

- Lightweight 2-way active PA speakers, weighing only 30lb/13.5kg (XP112A) and 33lb/15kg (XP115A)
- **XP112A:** 12" extended range low frequency woofer
- **XP115A:** 15" extended range low frequency woofer
- 1" high frequency driver
- 500 watts of output power
- XLR-1/4" combo input for microphones and line level devices
- Contour equalization switch
- XLR Link output connector to daisy chain multiple speakers
- Tilt-back design for floor monitor positioning
- 1 3/8" speaker stand mount
- Integrated top/side carry handle
- Rugged polypropylene cabinet construction



Expedition XP112A back panel



DJs / Live Events



Bands

### EXPEDITION XP112A

UPC .....	809164016533
SKU .....	SAXP112A
HEIGHT .....	26.5"
WIDTH .....	17.75"
DEPTH .....	15.5"
WEIGHT .....	35lb

### EXPEDITION XP115A

UPC .....	809164017257
SKU .....	SAXP115A
HEIGHT .....	27"
WIDTH .....	18"
DEPTH .....	17"
WEIGHT .....	38lb

\* DIMENSIONS AND WEIGHTS BOXED  
 \*\* MASTER CARTON QUANTITY (ALL): 1

# SAMSON®



# PA CABINETS

Auro | RSX



# AURO X12D / X15D

## 1000W 2-Way Active Loudspeakers



X15D



X12D

Samson's Auro X Series 2-Way Active Loudspeakers match ultra-efficient power with extensive Digital Signal Processing (DSP) and rugged portability to create a new value standard in loudspeaker performance. Encompassing two compact designs (X12D and X15D), the Auro X Series provides versatile speaker solutions for musicians, DJs and live sound professionals.

Both the Auro X12D and X15D feature a lightweight 1,000-watt Class D amplifier and Samson's proprietary R.A.M.P. (Reactive Alignment, Maximum Protection) DSP technology. The DSP provides Reactive Alignment filters to enhance transducer performance. It also offers Maximum Protection to the speakers' components via thermal and over current sensors.

Thanks to their respective 12" and 15" extended low frequency drivers and accompanying 1.34" compression drivers, the Auro X12D and X15D generate a well balanced and incredibly articulate audio experience. Both models offer two input channels, along with 3-position EQ and high pass filter presets to optimize the speakers' performance for different setups and applications. For additional convenience, these speakers each offer two ergonomic carry handles. Lastly, their solid polypropylene construction, impact resistant design and full metal grills ensure roadworthy durability.

### FEATURES

- Compact, lightweight Class D 2-way active loudspeakers
- 1,000 watts of output power
- X12D: 12" extended range low frequency driver
- X15D: 15" extended range low frequency driver
- 1.34" (34mm) titanium compression driver
- Samson's R.A.M.P. DSP technology
- Master Volume control with peak indicator
- Two XLR-1/4" combo input channels with independent volume controls
- 3-position EQ and HPF presets
- XLR Link output allows expanded sound to additional speakers
- Solid polypropylene enclosure with impact resistant design
- Full metal grill protects all speaker components
- Two large ergonomic carry handles
- Integrated 1 3/8" speaker stand mount
- Dual-angle floor monitor positioning options



Auro X12D back panel



Dual-angle floor monitor positioning options



60° Positioning



30° Positioning

### AURO X12D

UPC .....	809164014454
SKU .....	SAROX12DA
HEIGHT .....	25"
WIDTH .....	16.5"
DEPTH .....	13"
WEIGHT .....	33.65lb

### AURO X15D

UPC .....	809164014461
SKU .....	SAROX15DA
HEIGHT .....	31.5"
WIDTH .....	20.5"
DEPTH .....	16.25"
WEIGHT .....	48lb

\* DIMENSIONS AND WEIGHTS BOXED  
 \*\* MASTER CARTON QUANTITY (ALL): 1

# SAMSON®

# AURO D208 / D210

## 2-Way Active Loudspeakers



D208

D210

Designed to produce the key elements of power, portability and exceptional sound, AURO D208 and D210 2-Way Active Loudspeakers are compact enclosures that combine superior components and meticulous engineering. Ideal for installation purposes, gigging musicians and general live sound reinforcement applications, AURO provides versatile speaker solutions that integrate easily into PA setups.

AURO D208 and D210 feature a conveniently lightweight Class D design, producing 200 watts of onboard power via their respective 8" and 10" extended low frequency drivers and accompanying 1" (25mm) compression driver. Compact yet resilient, these loudspeakers support immersive, articulate bass and sweet, lucid highs for well-balanced and expressive audio suitable for any situation where pro-quality sound is a must.

For additional versatility, these speakers feature a Mic/Line input with Volume control and Clip LED. Also, a Line output allows for the linking of multiple speakers. Each AURO features a 1 3/8" (35mm) pole mount receptacle and floor monitor positioning options for flexible setup.

Bridging the gap between portable and fixed installation applications, AURO D208 and D210 are perfect for sound professionals and performers seeking serious power and true sonic purity.

### FEATURES

- Compact, lightweight Class D 2-way active loudspeakers
- **D208:** 8" extended range low frequency driver
- **D210:** 10" extended range low frequency driver
- 1" compression driver with 1" exit
- 200 watts of output power
- Mic/Line input with Volume control and Clip LED
- Additional Line output allows linking of multiple speakers
- 1 3/8" pole mount receptacle
- Floor monitor positioning options



D208 Rear Panel



### AURO D208

UPC .....	809164013259
SKU .....	SAROD208A
HEIGHT .....	17"
WIDTH .....	12.25"
DEPTH .....	10.25"
WEIGHT .....	17.21b

### AURO D210

UPC .....	809164013266
SKU .....	SAROD210A
HEIGHT .....	20.5"
WIDTH .....	14.5"
DEPTH .....	12"
WEIGHT .....	20.91b

\* DIMENSIONS AND WEIGHTS BOXED

\*\* MASTER CARTON QUANTITY (ALL): 1

# SAMSON®

# AURO D1200 / D1500

Active Subwoofers



Auro D1200



Auro D1500

Samson's Auro Series Active Subwoofers provide powerful lows that let audiences not only hear, but "feel" the bass. Featuring two distinct models (D1200, D1500), the Auro subs pack heart-thumping power in compact, lightweight enclosures that are ideal for a variety of fixed installation, DJ and sound reinforcement applications. Auro Series Subwoofers go where low-end is a must.

## FEATURES

- Lightweight, compact Class D active subwoofers, weighing just over 40lb (D1200) and 50lb (D1500)
- **Auro D1200:** 12" long excursion LF driver, 700 watts
- **Auro D1500:** 15" long excursion LF driver, 1,000 watts
- Balanced XLR-1/4" combo inputs
- Parallel XLR outputs
- Signal, Limiter and Protect LED indicators
- Variable low pass filter control
- 3-position (Normal, Deep, Boost) DSP contour control
- Polarity switch
- Solid 5/8" plywood enclosure with textured paint finish
- Integrated 1 3/8" pole mount receptacle
- Two large ergonomic carry handles
- Auro D1500 also features unbalanced stereo RCA inputs, stereo XLR high pass filter outputs



Optional Accessory: **TS20** Satellite Mounting Poles (Pair)

## AURO D1200

UPC .....809164014478  
SKU .....SAROD1200A  
HEIGHT .....22"  
WIDTH .....20"  
DEPTH .....18"  
WEIGHT .....53.68lb  
MASTER CARTON QUANTITY: 1

## AURO D1500

UPC .....809164016939  
SKU .....SAROD1500A  
HEIGHT .....24.5"  
WIDTH .....22.75"  
DEPTH .....20.5"  
WEIGHT .....64.15lb  
MASTER CARTON QUANTITY: 1

## TS20

UPC .....809164005209  
SKU .....SATS20  
HEIGHT .....2.5"  
WIDTH .....6.25"  
DEPTH .....37"  
WEIGHT .....7.68lb  
MASTER CARTON QUANTITY: 6

\* **DIMENSIONS AND WEIGHTS BOXED**

# **SAMSON**

# RSX112A / RSX115A

1600W 2-Way Active Loudspeakers



RSX112A



RSX115A

Samson's RSX 2-Way Active Loudspeakers deliver 1,600 watts of output power and impeccable sound quality in two models. The RSX112A and RSX115A combine 9-layer plywood cabinet construction with ultra-efficient Class D power and advanced Digital Signal Processing technology to provide unrivaled performance to live sound professionals.

Featuring Samson's proprietary R.A.M.P. (Reactive Alignment, Maximum Protection) DSP technology, the RSX112A and RSX115A employ Reactive Alignment filters to enhance transducer performance. The DSP also offers Maximum Protection to the speakers' components via thermal and over current sensors. With their respective 12" and 15" low frequency drivers, both speakers feature a single 1.75" PETP Celestion® compression driver mounted within a dispersion efficient waveguide, adding a wide and balanced sound field to the RSX design.

In addition to their ultra-durable cabinet construction, the RSX112A and RSX115A each feature a perforated steel grill, 1 3/8" pole mount receptacle and two rubberized carry handles. Connectivity includes two XLR-1/4" combo input channels with a selectable Mic/Line switch on Channel 1. Additionally, an XLR Link output is available for stereo operation. Each speaker performs equally as well as a floor monitor or main system speaker. For situations that require permanent speaker installation, the RSX112A and RSX115A are each furnished with twelve M10 (10mm) fly points.

## FEATURES

- Lightweight, Class D 2-way active loudspeakers
- 1,600 watts of output power
- Peak SPL of 133dB
- 9-layer plywood cabinet construction
- Samson's R.A.M.P. DSP technology
- **RSX112A:** 12" low frequency driver
- **RSX115A:** 15" low frequency driver
- 1.75" PETP Celestion® compression driver
- Two XLR-1/4" combo input channels
- Floor monitor positioning option
- 1 3/8" pole mount receptacle
- Twelve M10 (10mm) fly points
- Rubberized carry handles
- Perforated steel grill
- Durable black, textured paint finish



RSX112A back panel

## RSX112A

UPC .....	809164017530
SKU .....	SARSX112A
HEIGHT .....	27.5"
WIDTH .....	17.75"
DEPTH .....	16.5"
WEIGHT .....	TBD

## RSX115A

UPC .....	809164017547
SKU .....	SARSX115A
HEIGHT .....	32"
WIDTH .....	20.25"
DEPTH .....	18.5"
WEIGHT .....	TBD

\* DIMENSIONS AND WEIGHTS BOXED

\*\* MASTER CARTON QUANTITY (ALL): 1

# SAMSON®



# RSXM10A / RSXM12A

## 800W 2-Way Active Stage Monitors



RSXM12A

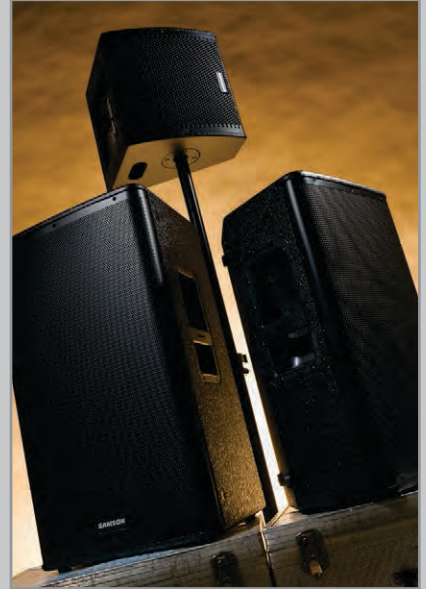
Samson's RSX 2-Way Active Stage Monitors bring exceptional monitoring versatility, ultra-efficient Class D power and the durability of all-wood cabinet construction to touring musicians/DJs, front-of-house engineers and live sound professionals.

RSXM10A and RSXM12A both produce 800 watts of Class D power via their respective 10" and 12" low frequency drivers and premium 1" horn-loaded tweeters. A compact, coaxial design gives the monitors amazing portability with impeccable sound. In addition, each monitor has an integrated 1 3/8" pole mount receptacle and a Monitor/FOH optimization switch for added flexibility.

Designed to bring professional performance to a variety of monitoring applications, including keyboards and electronic drums, the RSXM10A and RSXM12A are also convenient for DJs needing a dedicated monitor while working in a compact booth. A single XLR-1/4" combo input is provided, along with an XLR Link output for system expansion. In addition, both monitors include a powder coated steel grill and two integrated side carry handles, making them durable, yet highly portable for use on the road.

### FEATURES

- Lightweight Class D 2-way active stage monitors
- 800 watts of output power
- All-wood cabinet construction
- Compact, coaxial design
- **RSXM10A:** 10" low frequency driver
- **RSXM12A:** 12" low frequency driver
- 1" tweeter
- XLR-1/4" combo input
- XLR Link output
- Dedicated Volume knob
- FOH/Monitor selector switch to optimize sound
- 1 3/8" pole mount receptacle
- Integrated side carry handles
- Perforated steel grill protects all monitor components
- Durable black, textured paint finish



RSXM10A back panel

### RSXM10A

UPC .....	809164017806
SKU .....	SARSXM10A
HEIGHT .....	17"
WIDTH .....	17"
DEPTH .....	16"
WEIGHT .....	TBD

### RSXM12A

UPC .....	809164017813
SKU .....	SARSXM12A
HEIGHT .....	18.25"
WIDTH .....	18.5"
DEPTH .....	17.25"
WEIGHT .....	TBD

\* DIMENSIONS AND WEIGHTS BOXED

\*\* MASTER CARTON QUANTITY (ALL): 1

# SAMSON®

# RSX18A

2000W Active Subwoofer



1 3/8" pole mount receptacle

Samson's RSX18A Active Subwoofer provides the pulsating lows that allow you to feel the bass. With an efficient Class D amplifier, this subwoofer packs the heart-thumping power you need for fixed installations, musicians, DJs and general live sound reinforcement applications.

RSX18A is an active subwoofer features an 18" low frequency woofer with a robust 3" voice coil driven by 2,000 watts of Class D power. It features balanced XLR stereo inputs, as well as both balanced XLR stereo full range and balanced XLR stereo high-pass outputs to run your satellite speakers or daisy chain with additional subwoofers. The high pass output option allows you to focus the subwoofers power exclusively on the low frequencies.

To ensure roadworthy durability, the RSX18A is constructed of solid plywood and features a perforated steel grill. The enclosure also features two metal side carry handles, as well as a 1 3/8" (35mm) pole mount receptacle.

## FEATURES

- 2,000 watts of output power
- 18" low frequency driver
- 3" voice coil
- Class D amplifier
- Balanced XLR stereo inputs
- Balanced XLR stereo full range outputs
- Balanced XLR stereo high pass outputs
- Subwoofer Volume control
- Phase switch
- Power, Signal and Peak LED indicators
- Solid plywood cabinet construction
- Perforated steel grill
- Metal side carry handles
- 1 3/8" pole mount receptacle

## RSX18A

UPC .....	809164018162
SKU .....	SARSX18A
HEIGHT .....	31"
WIDTH .....	29.25"
DEPTH .....	24.25"
WEIGHT .....	TBD
MASTER CARTON QUANTITY: 1	

\* DIMENSIONS AND WEIGHT BOXED

# **SAMSON®**

# RSX

## Passive Loudspeakers



Samson's RSX Passive Loudspeakers are ideal for sound professionals and performers looking for serious output and high quality audio from their PA setups. This full-range line features four loudspeakers (RSX110, RSX112, RSX115, RSX215) and a subwoofer (RSX118S), all of which offer exceptional sound in a versatile cabinet design that is ideal for both road and installation applications. Perfect for gigging musicians, houses of worship and performance venues of varying sizes, Samson's RSX Series is a passive powerhouse.

### RSX110

- 2-way passive loudspeaker
- Celestion 10" low-frequency driver with 2" voice coil
- Celestion 1" PETP compression driver
- 300 watts AES, 1,200 watts Peak power handling at 8 ohms
- 60Hz–19kHz frequency response
- Dual Speakon® and 1/4" phone parallel speaker inputs
- Twelve M10 (10mm) fly points

### RSX115

- 2-way passive loudspeaker
- 15" low-frequency driver with 3" voice coil
- Celestion 1.75" PETP compression driver
- 600 watts AES, 2,400 watts Peak power handling at 8 ohms
- 50Hz–20kHz frequency response
- Dual Speakon® and 1/4" phone parallel speaker inputs
- Twelve M10 (10mm) fly points

### RSX118S

- Passive subwoofer
- 18" low-frequency driver with 3" voice coil
- 500 watts AES, 2,000 watts Peak power handling at 8 ohms
- 35Hz–150kHz frequency response
- Maximum SPL of 126dB
- Two parallel Speakon® inputs
- 1 3/8" pole mount receptacle

### RSX112

- 2-way passive loudspeaker
- Celestion 12" low-frequency driver with 2.5" voice coil
- Celestion 1.75" PETP compression driver
- 400 watts AES, 1,600 watts Peak power handling at 8 ohms
- 50Hz–19kHz frequency response
- Dual Speakon® and 1/4" phone parallel speaker inputs
- Twelve M10 (10mm) fly points

### RSX215

- 2-way passive loudspeaker
- Dual 15" low-frequency drivers with 3" voice coils
- Celestion 1.75" PETP compression driver
- 1,200 watts AES, 4,800 watts Peak power handling at 8 ohms
- 40Hz–20kHz frequency response
- Dual Speakon® and 1/4" phone parallel speaker inputs
- Twelve M10 (10mm) fly points

### RSX110

UPC .....	809164015680
SKU .....	SARSX110
HEIGHT .....	23.75"
WIDTH .....	16"
DEPTH .....	15.5"
WEIGHT .....	40lb

### RSX112

UPC .....	809164015697
SKU .....	SARSX112
HEIGHT .....	27.5"
WIDTH .....	17.75"
DEPTH .....	16.5"
WEIGHT .....	62lb

### RSX115

UPC .....	809164015390
SKU .....	SARSX115
HEIGHT .....	32"
WIDTH .....	20.25"
DEPTH .....	18.5"
WEIGHT .....	65lb

### RSX215

UPC .....	809164015383
SKU .....	SARSX215
HEIGHT .....	47.75"
WIDTH .....	20.25"
DEPTH .....	18.5"
WEIGHT .....	96lb

### RSX118S

UPC .....	809164015703
SKU .....	SARSX118S
HEIGHT .....	28.5"
WIDTH .....	27.25"
DEPTH .....	25.25"
WEIGHT .....	81lb

\* DIMENSIONS AND WEIGHTS BOXED

\*\* MASTER CARTON QUANTITY (ALL): 1

# SAMSON®



# MIXERS

MixPad® MXP Series | S4000



# MIXPAD® MXP124FX / MXP124

## Analog Stereo Mixers



MXP124FX



MXP124



Optional SMS124M Mixer Stand Holder

The all-new MixPad® MXP124FX Compact, 12-Channel Analog Stereo Mixer with Effects and USB demonstrates Samson's commitment to quality, affordability and professional specs. This lightweight mixer offers all of the sonic clarity, ease of use and premium performance that serious musicians demand. *MixPad® MXP124 Compact, 12-Channel Analog Stereo Mixer model is also available.*

The MXP124FX features premium circuitry specifically designed to work with Samson's MDR (Maximum Dynamic Range) mic preamps to provide wide frequency range, definitive channel separation and natural response. This ensures that all of your mixes originate from pure, authentic audio signals, making the MXP124FX perfect for education, broadcast, band rehearsals and other live sound applications.

With 100 24-bit, low-noise digital effects, the MXP124FX offers a studio-inspired effects processor to give your mixes a professional touch. The mixer also features a high-integrity, bidirectional USB connection for recording a mix to your favorite DAW or integrating digital music files from your computer into a project.

The MXP124FX has selectable 48-volt phantom power so you're free to mix in the warm, natural response of your favorite condenser microphones. Further catered to live performance, the MXP124FX includes brightly colored knobs, as well as 4-segment LED level metering for safe and efficient operation in dark environments.

### FEATURES

#### MXP124FX

- Ultra-low noise, high headroom analog mixer
- Four Class A, MDR (Maximum Dynamic Range) mic preamps with 3-band EQ
- Four Stacked-Stereo channels
- High-quality, precision faders
- Two single-knob, studio-quality compressors
- High-integrity, bidirectional USB interface
- 100 24-bit, low-noise digital effects
- One pre-fader Aux Send per channel for monitor mix
- All mic channels equipped with input Gain and high pass filters
- 48V Phantom Power for condenser microphones
- Multiple outputs: Main Mix, Mix 2, Phones and Tape
- USB/Tape inputs assignable to Main Mix or Mix 2/Phones outputs

#### MXP124

- Ultra-low noise, high headroom analog mixer
- Four Class A, MDR (Maximum Dynamic Range) mic preamps with 3-band EQ
- Four Stacked-Stereo channels
- High-quality, precision faders
- Two single-knob, studio-quality compressors
- One pre-fader Aux Send per channel for monitor mix
- All mic channels equipped with input Gain and high pass filters
- 48-volt Phantom Power for condenser microphones
- Multiple outputs: Main Mix, Mix 2, Phones and Tape
- Tape inputs assignable to Main Mix or Mix 2/Phones outputs

#### MXP124FX

UPC .....	809164016090
SKU .....	SAMXP124FX
HEIGHT .....	18.25"
WIDTH .....	13"
DEPTH .....	5.75"
WEIGHT .....	7.5lb

#### MXP124

UPC .....	809164016052
SKU .....	SAMXP124
HEIGHT .....	18.25"
WIDTH .....	13"
DEPTH .....	5.75"
WEIGHT .....	7.5lb

**\* DIMENSIONS AND WEIGHTS BOXED**  
**\*\* MASTER CARTON QUANTITY (ALL): 4**

# SAMSON®

# MIXPAD® MXP144FX / MXP144

## Analog Stereo Mixers



MXP144FX



MXP144



Recording

The all-new MixPad® MXP144FX 14-Channel Analog Stereo Mixer with Effects and USB demonstrates Samson's commitment to quality, affordability and professional specs. This lightweight mixer offers all of the sonic clarity, ease of use and premium performance that serious musicians demand. A MixPad® MXP144 14-Channel Analog Stereo Mixer model is also available.

The MXP144FX features premium circuitry specifically designed to work with Samson's MDR (Maximum Dynamic Range) mic preamps to provide wide frequency range, definitive channel separation and natural response. This ensures that all of your mixes originate from pure, authentic audio signals, making the MXP144FX perfect for education, broadcast, band rehearsals and other live sound applications.

With 100 24-bit, low-noise digital effects, the MXP144FX offers a studio-inspired effects processor to give your mixes a professional touch. The mixer also features a high-integrity, bidirectional USB connection for recording a mix to your favorite DAW or integrating digital music files from your computer into a project.

The MXP144FX has selectable 48-volt phantom power so you're free to mix in the warm, natural response of your favorite condenser microphones. Further catered to live performance, the MXP144FX includes brightly colored knobs, as well as 8-segment LED level metering for safe and efficient operation in dark environments.

## FEATURES

### MXP144FX

- Ultra-low noise, high headroom analog mixer
- Six Class A, MDR (Maximum Dynamic Range) mic preamps
- Four stereo channels with multiple input options (1/4" and RCA)
- High-integrity, bidirectional USB interface
- 100 24-bit, low-noise digital effects
- Four TRS inserts for external signal processing
- 3-band active EQ
- High-quality, precision 60mm faders
- Four single-knob, studio-quality compressors
- Pre-fader Aux Send for monitor mix
- Post-fader Aux Send for external effects
- All mic channels equipped with input Gain and high pass filters
- 48V Phantom Power for condenser microphones
- Multiple outputs: Main Mix, Mix 2, Phones and Tape
- XLR and 1/4" Main Mix outputs
- USB/Tape inputs assignable to Main Mix or Mix 2/Phones outputs

### MXP144

- Ultra-low-noise, high headroom analog mixer
- Six Class A, MDR (Maximum Dynamic Range) mic preamps
- Four stereo channels with multiple input options (1/4" and RCA)
- Four TRS inserts for external signal processing
- 3-band active EQ
- High-quality, precision 60mm faders
- Four single-knob studio-quality compressors
- Pre-fader Aux send for monitor mix
- Post-fader Aux Send for external effects
- All mic channels equipped with input Gain and high pass filters
- 48-volt Phantom Power for condenser microphones
- Multiple outputs: Main Mix, Mix 2, Phones and Tape
- XLR and 1/4" Main Mix outputs
- Tape inputs assignable to Main Mix or Mix 2/Phones outputs

## MXP144FX

UPC .....	809164016175
SKU .....	SAMXP144FX
HEIGHT .....	18.25"
WIDTH .....	18"
DEPTH .....	6.25"
WEIGHT .....	10.5lb

## MXP144

UPC .....	809164016137
SKU .....	SAMXP144
HEIGHT .....	18.25"
WIDTH .....	18"
DEPTH .....	6.25"
WEIGHT .....	10.5lb

\* DIMENSIONS AND WEIGHTS BOXED  
 \*\* MASTER CARTON QUANTITY (ALL): 4

# SAMSON®

# S4000

## Powered Mixer



Samson's S4000 Powered Mixer delivers the key pillars of premium sound, exceptional power, precise control and reliability that are essential to today's professional front of house engineers and live sound producers. Designed to Samson's strict performance standards, the S4000 is the ideal board for any venue that demands high-quality audio.

The S4000 offers 1,000 watts of power (500 watts per side) at 4 ohms with a total of 20 input channels, including 12 mono channels with high-quality mic preamps and line inputs, as well as four stereo channels. It also features a dual 24-bit effects processor with 100 preset parameters and FX level controls, as well as a built-in MP3 player/recorder for streaming your music files through your sound system or recording your mix via a USB flash drive.

Precise sound control on the S4000 is enabled through each mono channel's low and high frequency EQ knobs, and advanced mid-frequency sweep and Cut/Boost with variable knobs. Further customization of your overall output is provided with a 9-band graphic EQ available on both the monitor and master output sections. Additional S4000 features include four Aux sends (1 Pre, 1 Post, 2 Effects) on each channel, onboard phantom power for integrating condenser microphones and Mute and Low Pass Filter buttons on all mono channels. The mixer also provides advanced monitoring in the form of 12-segment stereo LED level meters, 1/4" headphone and Speakon® outputs, as well as a Mono Sub output with variable low-pass filter. Lastly, the S4000 comes with a protective cover with locking latches for maximum durability.

With robust power, extensive features and meticulous engineering loaded into a solid, roadworthy design, Samson's S4000 Powered Mixer is a most viable solution for all your live sound needs.

### FEATURES

- 20-channel (12 mono, 4 stereo) powered mixer
- 1,000 watts of power (500 watts of power per side) at 4 ohms
- 2,000 watts of power (1,000 watts of power per side) at 2 ohms
- Built-in MP3 player/recorder for streaming music or recording to a USB flash drive
- 12 high-quality, low noise mic preamps
- Four Aux sends (1 Pre, 1 Post, 2 Effects)
- Dual 24-bit effects processor with 100 preset parameters and FX level controls
- Dual 9-band graphic EQ
- 12-segment LED level meters
- Mono Sub output with variable low pass filter
- 1/4" headphone and Speakon® outputs
- Low and high frequency EQ knobs
- Advanced mid-frequency sweep and Cut/Boost with variable knobs
- Mute and Low Pass Filter buttons, Gain knobs, PFL control switch on all mono channels
- Includes protective cover with locking latches



Heavy duty mixer cover with locking latches (included)



SMX100 Mixer Stand (sold separately)

### S4000

UPC.....	809164016779
SKU.....	SAS4000
HEIGHT.....	11.5"
WIDTH.....	29.75"
DEPTH.....	25.25"
WEIGHT.....	TBD
MASTER CARTON QUANTITY:	TBD

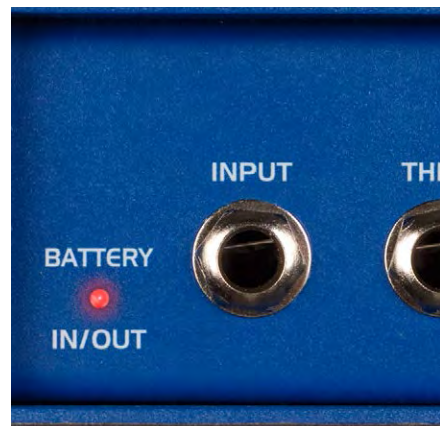
\* DIMENSIONS AND WEIGHT BOXED

# SAMSON®



# SIGNAL PROCESSORS

MD1 | MD1 PRO | MDA1 | MD2 PRO | MCD2





# S-MAX

## Direct Boxes



**MD1 Mono Passive Direct Box**

Samson's S-Max Direct Boxes combines premium sound circuitry with all-metal, impact resistant construction to provide high-quality signal connection solutions for live and studio applications. The S-Max line is comprised of five distinct models designed to satisfy a variety of professional audio needs.

The MD1 Mono Passive Direct Box features Samson's STL transformer, which allows you to send your instrument and amp signals to the main mixing board with confidence. The MD1 provides a parallel Thru and Balanced Output to simultaneously route your signal to an onstage amplifier and mixer. The STL transformer gives the MD1 a flat frequency response that will maintain the natural sound of your instrument and provide excellent isolation from electrical and RF interference.

The mono MD1 Pro and stereo MD2 Pro Passive Direct Boxes utilize Samson's Mu-Metal shielded STLX transformer, which is specifically designed to handle high signal levels and prevent interference. The high-quality STLX efficiently transfers the natural sound of your instruments. The MD1 Pro and MD2 Pro also include attenuation settings to toggle between line and speaker level signals.

The MDA1 Mono Active Direct Box is ideal for running longer signals to your mixer in high interference environments. An input attenuator lets you adapt the MDA1 to a wide variety of signals, while a Ground Lift switch enables you to further remove hum and buzz. The MDA1 can run on 48V Phantom or 9V Battery power.

The MCD2 Pro Stereo PC Direct Box is the pro solution for connecting computers, laptops, tablets and smartphones to a PA system, particularly for DJ applications. It includes dual 1/4" and RCA inputs, stereo 1/8" inputs, and dual balanced XLR outputs. The MCD2 Pro houses two of Samson's STLX Mu-Metal shielded transformers, which work with a Ground Lift switch to eliminate hum and buzz. In addition, the MCD2 Pro features -10dB and -20dB attenuation settings and a mono sum switch.

### FEATURES

#### MD1

- Samson STL transformer
- Ground Lift switch
- 1/4" Input and Thru
- Balanced XLR output

#### MD1 PRO

- Samson STLX Mu-Metal shielded transformer
- -15dB and -30dB attenuation settings
- Ground Lift switch
- 1/4" Input and Thru
- Balanced XLR output

#### MD2 PRO

- Dual Samson STLX Mu-Metal shielded transformers
- -10dB and -20dB attenuation settings (stereo)
- Ground Lift switches
- Dual 1/4" Inputs and Thrus
- Dual balanced XLR outputs

#### MDA1

- -15dB attenuation setting
- Ground Lift switch
- 1/4" Input and Thru
- Balanced XLR output
- 48V Phantom and 9V Battery power options

#### MCD2 PRO

- Dual Samson STLX Mu-Metal shielded transformers
- Mono sum switch
- -10dB and -20dB attenuation settings
- Ground Lift switch
- Dual 1/4" and RCA inputs
- Stereo 1/8" input
- Dual balanced XLR outputs



**MD1 Pro Professional Mono Passive Direct Box**



**MD2 Pro Professional Stereo Passive Direct Box**



**MDA1 Mono Active Direct Box**



**MCD2 Pro Professional Stereo Computer/DJ Direct Box**

#### MD1

UPC ..... 809164018070  
 SKU ..... SAMD1

#### MD1 PRO

UPC ..... 809164018087  
 SKU ..... SAMD1PRO

#### MD2 PRO

UPC ..... 809164018094  
 SKU ..... SAMD2PRO

#### MDA1

UPC ..... 809164018063  
 SKU ..... SAMDA1

#### MCD2 PRO

UPC ..... 809164018100  
 SKU ..... SAMCD2PRO

# SAMSON®



# POWER AMPLIFIERS

MXS | SXD



# MXS

## Professional Power Amplifiers



MXS2800

Samson's MXS Professional Power Amplifiers are designed to deliver premium power to any sound reinforcement application that requires exceptional sound and high wattage support. Highly efficient, the MXS power amps combine easy operation, comprehensive protection and impressive output levels into a small, lightweight design perfect for any live performance or installation setup.

The MXS line offers three models: the pioneering single rack space/Class D MXS2800 (850 watts per side at 4 ohms, 3,400 watts bridged mono at 4 ohms), as well as the dual rack space/Class H MXS3000 (1,550 watts per side at 4 ohms, 4,600 watts bridged mono at 4 ohms) and MXS3500 (1,900 watts per side at 4 ohms, 5,400 watts bridged mono at 4 ohms). The MXS3000 and MXS3500 employ an intelligent switch mode power supply design that provides optimal power distribution and maximum efficiency by continuously monitoring the signal level. This smart distribution eliminates excess heat or wasted energy. All MXS models feature low noise fans to ensure each high-grade power transformer has continuous access to cool air.

The MXS power amps sport a sleek, user-friendly front-end design with detented level controls for each channel, as well as Signal, 10dB and Peak level LEDs for optimal use on dark stages. The MXS3000 and MXS3500 offer additional LEDs to indicate your current operating mode and filter settings. The back panel of the MXS2800 features both balanced XLR and unbalanced RCA inputs, while its outputs utilize Speakon® connectors. Both the MXS3000 and MXS3500 models offer XLR and 1/4" inputs, as well as Binding Post and Speakon® outputs. In addition, the MXS2800's 2-position Mode selector switch allows for easy toggling between Stereo and Bridged Mono modes. The MXS3000 and MXS3500 have the same toggling capability, but with 3-position Mode (Mono, Stereo, Bridged Mono) selector switches. The two larger models provide an additional 3-position (120Hz, Full, 28Hz) filter switch for optimized application performance.

### FEATURES

#### MXS2800

- Single rack space, ultra-lightweight Class D power amplifier
- 850 watts per side at 4 ohms, 3,400 watts bridged mono at 4 ohms
- 450 watts per side at 8 ohms, 1,700 watts bridged mono at 8 ohms
- Built-in limiter provides peak power delivery while minimizing distortion
- Extensive 4-point protection circuitry (Short Circuit, DC Output, Over Current, Thermal)
- Front Panel LED indicators (Signal, 10dB, Peak)
- 2-position Mode (Stereo, Bridged Mono) selector switch
- XLR and RCA inputs
- Speakon® outputs
- Onboard cooling fans

#### MXS3000

- Premium performance, high headroom power amplifier
- Class H amplifier technology with switch mode power supply for optimal power distribution
- 1,550 watts per side at 4 ohms, 4,600 watts bridged mono at 4 ohms
- 950 watts per side at 8 ohms, 3,100 watts bridged mono at 8 ohms
- Built-in limiter provides peak power delivery while minimizing distortion

- Extensive 4-point protection circuitry (Short Circuit, DC Output, Over Current, Thermal)
- Front Panel LED indicators (Signal, 10dB, Peak)
- 3-position Mode (Mono, Stereo, Bridged Mono) and Filter (28Hz, Full, 120Hz) selector switches
- XLR and 1/4" inputs
- Binding Post and Speakon® outputs
- Onboard cooling fans

#### MXS3500

- Premium performance, high headroom power amplifier
- Class H amplifier technology with switch mode power supply for optimal power distribution
- 1,900 watts per side at 4 ohms, 5,400 watts bridged mono at 4 ohms
- 1,100 watts per side at 8 ohms, 3,700 watts bridged mono at 8 ohms
- Built-in limiter provides peak power delivery while minimizing distortion
- Extensive 4-point protection circuitry (Short Circuit, DC Output, Over Current, Thermal)
- Front Panel LED indicators (Signal, 10dB, Peak)
- 3-position Mode (Mono, Stereo, Bridged Mono) and Filter (28Hz, Full, 120Hz) selector switches
- XLR and 1/4" inputs
- Binding Post and Speakon® outputs
- Onboard cooling fans



MXS3000



MXS3500

#### MXS2800

UPC .....	809164016571
SKU .....	SAMXS2800
HEIGHT .....	4.5"
WIDTH .....	21"
DEPTH .....	14.25"
WEIGHT .....	11.46lb

#### MXS3000

UPC .....	809164016618
SKU .....	SAMXS3000
HEIGHT .....	6.25"
WIDTH .....	20.25"
DEPTH .....	17.25"
WEIGHT .....	27.77lb

#### MXS3500

UPC .....	809164016656
SKU .....	SAMXS3500
HEIGHT .....	6.25"
WIDTH .....	20.25"
DEPTH .....	17.25"
WEIGHT .....	27.77lb

\* DIMENSIONS AND WEIGHTS BOXED  
 \*\* MASTER CARTON QUANTITY (ALL): 1

# SAMSON®

# SXD

## Power Amplifiers with DSP



SXD3000



SXD5000



SXD7000



Samson's all-new line of SXD Power Amplifiers combine impressive power with advanced DSP technology, pushing the boundaries of value, performance and reliability. With a full-featured interface for precise control over DSP parameters, the SXD power amps are the ideal choice for front of house engineers, installers and anyone else looking for a reliable power distribution setup.

The SXD Series features three distinct models, each with a convenient dual rack space design and exceptional power ratings: SXD3000 (450 watts per side at 4 ohms), SXD5000 (750 watts per side at 4 ohms) and SXD7000 (1,000 watts per side at 4 ohms). Each model is meticulously engineered to provide robust, clean output with low distortion and a wide dynamic range over a full frequency spectrum of 20Hz–20kHz.

The SXD line's advanced DSP is controlled via backlit LCDs specifically designed for use in low-lit environments, including dark stages. The power amps provide extensive control over high and low pass filters, a 3-band EQ, output limiter and delay time for speaker alignment. For fast setup, the SXDs feature four presets designed to provide optimal settings for various standard speaker configurations. Also, each SXD power amp offers a digital pass code security lock setting for uninterrupted performance.

Across the entire line, all amp channels offer multi-segment LED metering and level controls with detents, while your exact setting of gain and sensitivity can be monitored on the front panel LCD. Input connections for the SXD amps are made via balanced combination XLR and 1/4" connectors, while each amp provides both Binding Post and Speakon® output connectors.

Like all Samson power amps, the SXD line honors the essential factors of reliability and efficiency. With multi-stage protection for power-up, over-heating, over-current, short circuit, low output impedance and DC voltage, the SXD amps assure high reliability under the most demanding situations night after night. In addition, their all-steel chassis design and convenient carry handles make them perfect for the road.

Samson SXD Power Amplifiers with DSP: Setting a new standard in power amp performance, value and reliability.

### FEATURES

- Professional stereo power amplifiers with advanced DSP control
- Ample power for most performance and installation speaker configurations
- SXD3000: 450 watts per side at 4 ohms
- SXD5000: 750 watts per side at 4 ohms
- SXD7000: 1,000 watts per side at 4 ohms
- Crystal clear audio guaranteed (0.01% THD, 102dB SNR, 20Hz–20kHz frequency response)
- Editable presets for DJ, live sound and commercial installations
- Front panel LCD for navigating DSP settings, including Crossover, Filter, EQ, Limiter, Delay and more
- Individual channel level controls with detents for accurate setting of gain and sensitivity
- Multi-segment LED metering on each channel
- XLR and 1/4" inputs
- Binding Post and Speakon® outputs
- Dual rack space design

### SXD3000

UPC .....	SASXD3000
SKU .....	809164014355
HEIGHT .....	7.5"
WIDTH .....	22"
DEPTH .....	16.5"
WEIGHT .....	30lb

### SXD5000

UPC .....	SASXD5000
SKU .....	809164014362
HEIGHT .....	7.5"
WIDTH .....	22"
DEPTH .....	16.5"
WEIGHT .....	32lb

### SXD7000

UPC .....	SASXD7000
SKU .....	809164014379
HEIGHT .....	7.5"
WIDTH .....	22"
DEPTH .....	16.5"
WEIGHT .....	34lb

\* DIMENSIONS AND WEIGHTS BOXED  
 \*\* MASTER CARTON QUANTITY (ALL): 1

# SAMSON®



# USB / MIDI CONTROLLERS

Conspiracy™ | Graphite Mini's | Graphite | Carbon



# CONSPIRACY™

MIDI Control Surface



Samson's Conspiracy™ MIDI Control Surface lets you command your software with authority. Featuring an ultra-portable design and impressive array of customizable, tactile controls, the Conspiracy™ is the answer for producers/DJs, performers and mobile musicians looking to expand their creativity in live and studio production settings.

The core of the Conspiracy™ is made up of 25 velocity-sensitive trigger pads with aftertouch for sequencing melodies and rhythms, as well as launching clips, loops and samples for live performance. The pads also feature 3-color backlighting, which enables more comprehensive visual feedback and less reliance on a computer screen. Additional control is provided by the Conspiracy's 14 endless encoders, 10 backlit function buttons and 6 precision faders. All of these controls can be custom assigned via a backlit LCD navigated by a master encoder and four directional buttons. From here, you can program the type (Note/CC#), mode (Momentary/Toggle) and MIDI channel number of the pads, knobs, faders and buttons. Finally, the Conspiracy's X/Y touch pad is especially adept at manipulating effects or transitions within applicable software instruments.

The Conspiracy™ is an ultra-versatile controller that works equally as well in the studio and on stage. In addition to its other controls, the Conspiracy™ features a 2-channel DJ mixer section with a cross-fader and dedicated transport buttons. Its trigger pads and knobs are great for live remixing in applications such as Virtual DJ® and Traktor®, or dialing in effects and synth settings in Reason®, Ableton Live® and any of your favorite VST plug-ins. Also, 20 user presets allow you to quickly Save and Recall controller setups for different songs or recording/performance applications.

With Samson's Conspiracy™, feel the freedom of controlling your iPad or any computer-based audio application to its full potential.

## FEATURES

- Ultra-portable MIDI control surface
- 25 velocity-sensitive, 3-color backlit trigger pads with aftertouch
- 14 endless encoders, 10 backlit function buttons, 6 precision faders
- 2-channel DJ section with crossfader
- Assignable X/Y touch pad for next-level control over software effects
- Backlit LCD controlled by master encoder and four direction buttons
- Dedicated transport controls
- Save and Recall more than 15 presets
- Plug-and-play operation, no driver installation required
- Works with iPad using Apple's Lightning USB Camera Adapter or Camera Connection Kit (30-pin)
- Mini USB port
- USB bus powered
- Includes mini USB to USB cable



Plug-and-play operation, no driver installation required

## CONSPIRACY™

UPC.....	809164017219
SKU.....	SACONSPIR
HEIGHT.....	3.5"
WIDTH.....	14.25"
DEPTH.....	11.25"
WEIGHT.....	3.11lb
MASTER CARTON QUANTITY: 10	

\* DIMENSIONS AND WEIGHT BOXED

# SAMSON®

# GRAPHITE M25 / M32

## USB MIDI Controllers



GRAPHITE M25



GRAPHITE M32

Whether you're a producer, performer or DJ, Samson's Graphite M25 and M32 USB MIDI Controllers gives you all the music production control you need for home studio and mobile applications in two unique, ultra-portable designs.

The Graphite M25 USB MIDI Controller features a 25-key velocity-sensitive mini keyboard, trigger pads with aftertouch, a full-featured control surface and additional programmable functions for advanced playability and customization. And with iPad/USB bus power and plug-and-play operation, the Graphite M25 makes it easy to express your most dynamic musical ideas, no matter where creativity strikes.

The Graphite M32 USB MIDI Controller features a 32-key velocity-sensitive mini keyboard with a variety of programmable controls for optimal playability and customization in an ultra-portable design. Also with iPad/USB bus power and plug-and-play operation, the Graphite M32 makes home studio and on-the-go music production accessible to everyone.

For both models, a Graphite Editor Software can be downloaded for free from Samson's website. The software can be used to customize MIDI work flow by creating presets on the editor and saving them to a controller for quick recall.

With options for every level of performance and production, Samson's Graphite M25 and M32 USB MIDI Controllers are constructed to withstand the demands of the "mobile musician" and offer a variety of presets and programmable features that allow for dynamic, easy-to-use integration into your music software.

## FEATURES

### Graphite M25

- 25-key velocity-sensitive mini keyboard
- Ultra-portable design, perfect for home studios and on-the-go applications
- Programmable master encoder, eight MIDI assignable knobs and transport controls for hands-on control over your DAW and virtual instruments
- Four velocity-sensitive trigger pads (two banks each) with aftertouch for drum sounds and samples
- Dedicated Octave and Sustain buttons, Pitch Bend and Modulation strips
- CC mode sets trigger pads to send control change messages
- Program mode sends program change information
- Four customizable Preset options
- Mini USB port
- iPad and USB bus powered
- Includes mini USB to USB cable
- Free Graphite Editor Software download available

### Graphite M32

- 32-key velocity-sensitive mini keyboard
- Ultra-portable design, perfect for home studios and on-the-go applications
- Programmable Data slider and Volume knob
- Dedicated Octave and Sustain buttons, Pitch Bend and Modulation strips
- CC mode to send control change messages
- Program mode sends program change information
- Mini USB port
- iPad and USB bus powered
- Includes mini USB to USB cable
- Free Graphite Editor Software download available



### GRAPHITE M25

UPC .....	809164014164
SKU .....	SAKGRM25
HEIGHT .....	17.5"
WIDTH .....	7.5"
DEPTH .....	2"
WEIGHT .....	2lb

### GRAPHITE M32

UPC .....	809164015413
SKU .....	SAKGRM32
HEIGHT .....	21"
WIDTH .....	6.25"
DEPTH .....	2"
WEIGHT .....	2.05lb

\* DIMENSIONS AND WEIGHTS BOXED

\*\* MASTER CARTON QUANTITY (ALL): 10

# SAMSON®

# GRAPHITE MF8 / MD13

## USB MIDI Controllers



GRAPHITE MF8



GRAPHITE MD13



Whether you're a producer, performer or DJ, Samson's Graphite MF8 and MD13 USB MIDI Controllers give you all the music production control you need for home studio and mobile applications in two unique, ultra-portable designs.

The Graphite MF8 USB MIDI Controller features eight channel strips, each with a fader, parameter knob, Record and Solo/Mute buttons. It also offers a full transport control section, master encoder, crossfader and five assignable function buttons. And with iPad/USB bus power and plug-and-play operation, the Graphite MF8 makes it easy to get the most out of your music production software in the studio and beyond.

The Graphite MD13 USB MIDI Controller offers 13 velocity-sensitive trigger pads with aftertouch that are backlit and chromatically-arranged. In addition, the Graphite MD13 features a master encoder, six parameter knobs and a DJ-style crossfader, making it ideal for playing drums, keyboard parts, triggering samples and more. And with iPad/USB bus power and plug-and-play operation, the Graphite MD13 is highly portable and an excellent complement to any live, studio or on-the-go setup.

For both models, a Graphite Editor Software can be downloaded for free from Samson's website. The software can be used to customize MIDI work flow by creating presets on the editor and saving them to a controller for quick recall.

With options for every level of performance and production, Samson's Graphite MF8 and MD13 USB MIDI Controllers are constructed to withstand the demands of the "mobile musician" or producer and offer a variety of presets and programmable features that allow for dynamic, easy-to-use integration into your music software.

### FEATURES

#### Graphite MF8

- Eight channels with faders, parameter knobs, Record and Mute/Solo buttons
- Programmable master encoder, five function buttons and crossfader
- Dedicated transport controls
- Five customizable Preset options
- Left and right arrow buttons to control more tracks
- Mini USB port
- iPad and USB bus powered
- Includes mini USB to USB cable
- Free Graphite Editor Software download available

#### Graphite MD13

- 13 backlit velocity-sensitive, chromatically-arranged trigger pads (two banks each) with aftertouch
- Programmable master encoder, six parameter knobs and crossfader
- Octave buttons to extend the range
- CC mode to send control change messages
- Mini USB port
- iPad and USB bus powered
- Includes mini USB to USB cable
- Free Graphite Editor Software download available

### GRAPHITE MF8

UPC .....	809164015536
SKU .....	SAKGRMF8
HEIGHT .....	17.5"
WIDTH .....	7.5"
DEPTH .....	2"
WEIGHT .....	1lb

### GRAPHITE MD13

UPC .....	809164015543
SKU .....	SAKGRMD13
HEIGHT .....	21"
WIDTH .....	6.25"
DEPTH .....	2"
WEIGHT .....	1lb

\* DIMENSIONS AND WEIGHTS BOXED  
 \*\* MASTER CARTON QUANTITY (ALL): 10

# SAMSON®



# GRAPHITE 25 / 49

USB MIDI Controllers



Graphite 25



Graphite 49

Samson's Graphite 25 and 49 USB MIDI Controllers give you all the performance and production control you need to get the most out of your music software. Combining intuitive 25 and 49-key semi-weighted keyboards with feature sets that are both useful and accessible, the Graphite 25 and 49 are sleek, powerful tools that allow you to express your most dynamic musical ideas.

## FEATURES

### Graphite 25

- 25-key semi-weighted keyboard with aftertouch
- Programmable master fader, 8 encoders and 4 buttons for hands-on control over your DAW and virtual instruments
- 4 velocity-sensitive trigger pads with aftertouch (two banks) for drum sounds and samples
- Large LCD display provides real-time feedback
- Includes MIDI Out, USB and sustain pedal connections
- Compact design, perfect for live performance and studio applications
- Dedicated Transpose and Octave buttons, Pitch Bend and Modulation wheels
- 3 zones for creating splits and layering sounds
- Adjustable velocity curve for both keys and pads
- USB bus powered
- Bundled with Native Instrument's Complete Elements software

### Graphite 49

- 49-key semi-weighted keyboard with aftertouch
- 9 programmable faders, 8 encoders and 16 buttons for hands-on control over your DAW and virtual instruments
- 4 velocity-sensitive trigger pads with aftertouch (two banks) for drum sounds and samples
- Large LCD provides real-time feedback
- Includes MIDI Out, USB and sustain pedal connections
- Compact design, perfect for live performance and studio applications
- Dedicated Transpose and Octave buttons, Pitch and Mod wheels
- 4 zones for creating splits and layering sounds
- Adjustable velocity curve for both keys and pads
- iPad and USB bus powered
- Bundled with Native Instrument's Complete Elements software



Native Instrument's Complete Elements contains over 3GB of material with over 1000 sounds, all carefully compiled to provide a strong toolkit for the widest possible range of production tasks.



### GRAPHITE 25

UPC .....	809164014164
SKU .....	SAKGR25
HEIGHT .....	11.41"
WIDTH .....	19.88"
DEPTH .....	4.01"
WEIGHT .....	6lb
MASTER CARTON QUANTITY: 5	

### GRAPHITE 49

UPC .....	809164013662
SKU .....	SAKGR49
HEIGHT .....	12.5"
WIDTH .....	33.5"
DEPTH .....	5"
WEIGHT .....	8.8
MASTER CARTON QUANTITY: 2	

\* DIMENSIONS AND WEIGHTS BOXED

**SAMSON**

# CARBON 49 / 61

USB MIDI Controllers



CARBON 49



CARBON 61

Samson's Carbon 49 and 61 USB MIDI Controllers make musical performance and production accessible to everyone. For seasoned musicians and young creators alike, the Carbon 49 and 61 offer versatile, yet easy-to-use features in two compact, lightweight controllers that are well-suited for the stage and studio.

## FEATURES

### Carbon 49

- 49-key velocity-sensitive, semi-weighted keyboard
- Assignable Data encoder and Volume slider
- Edit key for adjusting up to 14 control parameters
- 3-digit, 7-segment LED display provides real-time feedback
- Includes traditional MIDI Out, Sustain pedal input and USB connections
- Compact design, perfect for live performance and studio applications
- Dedicated Transpose and Octave buttons, Pitch Bend and Modulation wheels
- Integrated iPad slot
- iPad and USB bus powered
- Bundled with Native Instrument's Complete Elements software

### Carbon 61

- 61-key velocity-sensitive, semi-weighted keyboard
- Assignable Data encoder and Volume slider
- Edit key for adjusting up to 14 control parameters
- 3-digit, 7-segment LED display provides real-time feedback
- Includes traditional MIDI Out, Sustain pedal input and USB connections
- Compact design, perfect for live performance and studio applications
- Dedicated Transpose and Octave buttons, Pitch Bend and Modulation wheels
- Integrated iPad slot
- iPad and USB bus powered
- Bundled with Native Instrument's Complete Elements software

Carbon 49/61 are bundled with:  
**KOMLETE ELEMENTS**



**NATIVE INSTRUMENTS**

Native Instrument's Complete Elements contains over 3GB of material with over 1000 sounds, all carefully compiled to provide a strong toolkit for the widest possible range of production tasks.



Compatible with Apple's iPad

### CARBON 49

UPC .....	809164013679
SKU .....	SAKC49
HEIGHT .....	11"
WIDTH .....	33.25"
DEPTH .....	5"
WEIGHT .....	8.1lb

### CARBON 61

UPC .....	809164014171
SKU .....	SAKC61
HEIGHT .....	11"
WIDTH .....	39.25"
DEPTH .....	5"
WEIGHT .....	10lb

\* DIMENSIONS AND WEIGHTS BOXED

\*\* MASTER CARTON QUANTITY (ALL): 2

**SAMSON®**

# STUDIO MONITORS

Resolv | MediaOne BT | Studio GT | Meteor M2



# RESOLV RXA

2-Way Active Studio Monitors with Air Displacement Ribbon Tweeters



RXA5

RXA6

Samson Resolv RXA 2-Way Active Studio Monitors deliver the detailed sonic elements that are essential for any studio setup. Uniting the latest advances in speaker technology and active electronics, the RXAs are true reference, professional studio monitors with a flat frequency response with no hype, just precise audio imaging for recording, mixing, mastering and other multimedia applications.

At the core of the RXA5 (70 watts) and RXA6 (100 watts) is Samson's newly-developed Air Displacement Ribbon Tweeter. The tweeter's corrugated ribbon design is able to move four times the air of a standard dome tweeter. The result is a linear response with extended high frequency, accurate phase response and extremely low distortion, allowing you to hear the subtle details of a mix such as mic placement and room ambience. In addition, the speakers' 5" and 6" copolymer woofers with butyl coating force a fast recovery and quick transient response for tight, low-end performance.

The RXA monitors employ a bi-amplified design (separate amps for both the woofer and tweeter) that optimizes the power efficiency of the Class A/B design. This ensures serious dynamic headroom, while reducing intermodulation distortion. The monitors also feature a multi-pole crossover design that's perfectly adjusted to the tuning of the monitors components, providing optimal performance and maximum SPL.

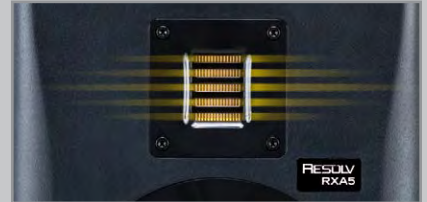
Combining a sleek design, high-end components and meticulous engineering, Samson's Resolv RXA studio monitors offer a true reference sound with no unnecessary color and distracting hype, just precise audio imaging for authentic and critical sound reproduction.

## FEATURES

- 2-way active studio monitors (sold individually)
- 2.5-inch aluminum Air Displacement Ribbon Tweeter
- **RXA5:** 5" copolymer woofer with butyl coating, 70 watts, 50Hz–27kHz
- **RXA6:** 6" inch copolymer woofer with butyl coating, 100 watts, 45Hz–27kHz
- Balanced 1/4" and XLR inputs, unbalanced RCA inputs
- Active crossover with multi-pole design for linear response
- Dedicated high and low frequency EQ knobs for precise control
- AV shielded for use with sensitive electronics
- Solid MDF construction



RXA5 rear panel



Air Displacement Ribbon Tweeters



## RESOLV RXA5

UPC .....	809164015857
SKU .....	SARXA5
HEIGHT .....	16.5"
WIDTH .....	12.25"
DEPTH .....	11.5"
WEIGHT .....	18lb

## RESOLV RXA6

UPC .....	809164015864
SKU .....	SARXA6
HEIGHT .....	17.25"
WIDTH .....	13.25"
DEPTH .....	12.25"
WEIGHT .....	23lb

\* DIMENSIONS AND WEIGHTS BOXED

\*\* MASTER CARTON QUANTITY (ALL): 1

# SAMSON

# RESOLV SE

## 2-Way Active Studio Reference Monitors



JAY RUSTON | Grammy® Nominated Producer / Mixer

Samson's Resolv SE 2-Way Active Studio Reference Monitors offer a redesign from the classic Resolv A-Series monitors, with more accurate sound reproduction and a stylish new look, in three distinct models. The Resolv SE5, SE6 and SE8 all utilize the latest innovations in speaker engineering, which can be used with multiple monitors to provide superb stereo imaging for recording, post-production and other multimedia applications.

The Resolv SE5 (70 watts, 50Hz–27 kHz), SE6 (100 watts, 45Hz–27 kHz) and SE8 (100 watts, 40Hz–27 kHz) include dedicated power amps and electronic crossovers that provide accurate tonal balance and are specifically designed for each model. Their new woven carbon fiber woofers (5, 6 and 8 inches) provide tight and controlled low frequency response, while their 1.25" soft dome tweeters give the high frequencies a true, natural sound without unwanted resonance. Resolv SEs each include a 4-position high frequency lift control that allow you to optimize your setup for different mixing environments, and are AV shielded for operation near computers.

Constructed of solid MDF (Medium Density Fiberboard), the new-look enclosures feature an elegant finish on the front panels. Inset into each panel is a sleek, time-aligned waveguide for a wide listening area, allowing minimum diffraction. In addition, their slotted front ports with rounded inner edges help reduce port noise at high SPLs.

With their stylish elegance and precise engineering, Resolv SE active studio reference monitors will produce audio playback with sparkling clarity and definition to complement any recording space.

### FEATURES

- 2-way active studio reference monitors with ported tuned enclosures (sold individually)
- **SE5:** 70 watts, 50Hz–27 kHz, 5" woven carbon fiber woofer
- **SE6:** 100 watts, 45Hz–27 kHz, 6" woven carbon fiber woofer
- **SE8:** 100 watts, 40Hz–27 kHz, 8" woven carbon fiber woofer
- 1.25 soft dome tweeter with neodymium magnet
- Active crossover with multi-pole design for linear response
- 4-position high frequency lift control
- Balanced 1/4" inputs, unbalanced RCA inputs
- AV shielded for use with computers
- Solid MDF (Medium Density Fiberboard) construction supports maximum SPL

### RESOLV SE5

UPC .....	809164013938
SKU .....	SARESSE5
HEIGHT .....	16.41"
WIDTH .....	11.14"
DEPTH .....	10.62"
WEIGHT .....	15.4lb

### RESOLV SE6

UPC .....	809164013945
SKU .....	SARESSE6
HEIGHT .....	17.71"
WIDTH .....	12.40"
DEPTH .....	11.85"
WEIGHT .....	20.94lb

### RESOLV SE8

UPC .....	809164013952
SKU .....	SARESSE8
HEIGHT .....	21.14"
WIDTH .....	14.92"
DEPTH .....	14.17"
WEIGHT .....	27.5lb

\* DIMENSIONS AND WEIGHTS BOXED  
 \*\* MASTER CARTON QUANTITY (ALL): 1

# SAMSON®

# RESOLV RXA10S

Active Studio Subwoofer with Remote Control



RXA10S rear panel

Samson's Resolv RXA10S Active Studio Subwoofer brings extended low frequency response to your studio setup. The RXA10S provides 250 watts of power, a 10" woofer with butyl surround, as well as ultra-fast recovery and quick transient response for exceptionally tight bass. In addition, premium studio integration features, including filtered outputs, variable Low Pass Filter control and a wireless remote control, make the RXA10S essential to any studio.

The included RXA10S remote provides complete wireless control over your monitor setup. Independent subwoofer and full system level controls allow precise adjustments, while 1-touch Dim and Mute functions are also available. For increased flexibility, the RXA10S has both XLR and RCA inputs and satellite outputs for your near field monitors. It also includes a Sub Bypass footswitch input and phase switch.

With convenient wireless level control, customizable functionality and flexibility for integration with your studio space and existing equipment, Samson's Resolv RXA10S subwoofer offers superior bass with no unnecessary color or hype, just precise low-end imaging for authentic and critical sound reproduction.

## FEATURES

- 10" woofer with butyl surround
- Wireless remote controls System Level/System Mute, Sub Level/Sub Mute, System Dim
- 250 watts of output power
- Front-firing tuned bass reflex port
- Variable Low Pass Filter control (80Hz–160Hz)
- System Volume and Sub Volume controls
- Balanced XLR inputs, outputs
- RCA inputs, outputs
- Sub Bypass footswitch input
- Phase switch
- Elegant mesh grill

## RESOLV RXA10S

UPC.....	809164017783
SKU.....	SARXA10S
HEIGHT.....	21"
WIDTH.....	17.75"
DEPTH.....	16.5"
WEIGHT.....	TBD
MASTER CARTON QUANTITY: 1	
* DIMENSIONS AND WEIGHT BOXED	

# SAMSON®

# MEDIAONE BT

Active Studio Monitors with Bluetooth®



MEDIAONE BT3

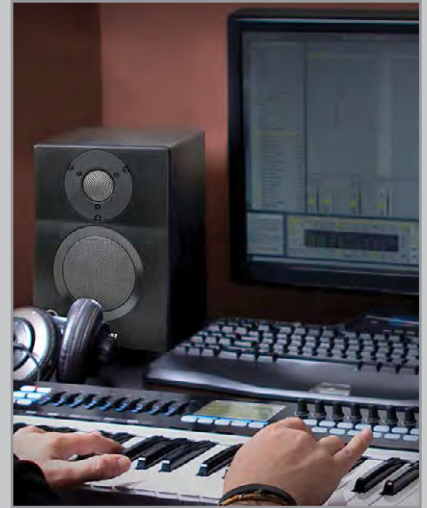
Samson's MediaOne Active Studio Monitors are the ideal speakers for all your multimedia needs and feature the ability to connect to your smart phone, laptop or tablet via *Bluetooth*. Whether you're listening to music, producing tracks, watching videos or gaming, these monitors provide dynamic and reliable audio in three distinct models. MediaOne BT3, BT4 and BT5 monitors feature the highest quality components, a stylish new look and are each packaged as a stereo pair.

MediaOne BT3 (15 watts per channel RMS, 30 watts per channel Peak), BT4 (20 watts per channel RMS, 40 watts per channel Peak) and BT5 (20 watts per channel RMS, 40 watts per channel Peak) monitors produce powerful, full-range audio. Their 3, 4 and 5" copolymer woofers deliver a controlled low frequency response, while their 1" silk dome tweeters give the high frequencies a natural sound without unwanted noise. Each rear-vented, precision-tuned port enclosure is finished in an all-black satin vinyl covering with matching metal grills for the woofers and tweeters, assuring these monitors look as good as they sound.

Using *Bluetooth*, you can easily pair these systems with your smartphone, laptop or tablet, and listen to your music, videos and other media applications through MediaOne monitors without wires. The *Bluetooth* pairing button can be found on the active speaker's rear control panel, along with the system's RCA inputs, passive monitor terminals and an AC power connector. In addition, the front panel houses an LED indicator, level control, as well as both a headphone output and stereo input. The 3.5mm stereo input can be used to connect secondary signal sources such as MP3 players, keyboards and more.

## FEATURES

- 2-way active studio monitors with rear-vented, precision-tuned port enclosures
- *Bluetooth* connectivity to connect wireless music sources
- **BT3:** 3" copolymer woofers, 15 watts per channel RMS, 30 watts per channel Peak
- **BT4:** 4" copolymer woofers, 20 watts per channel RMS, 40 watts per channel Peak
- **BT5:** 5" copolymer woofers, 20 watts per channel RMS, 40 watts per channel Peak
- 1" silk dome tweeters
- Front panel LED indicator, level control, headphone output and stereo input
- Back panel *Bluetooth* pairing button, RCA inputs, passive monitor terminals and AC power connector
- AV shielded for multimedia applications
- Passive crossover design for linear response from bottom to top
- Sleek all-black satin vinyl finish
- Metal grills protect woofer and tweeter components
- Speaker cable included



Music Production

## MEDIAONE BT3

UPC .....	809164014317
SKU .....	SAMBT3
HEIGHT .....	10.5"
WIDTH .....	17.5"
DEPTH .....	7.75"
WEIGHT .....	11.44lb

## MEDIAONE BT4

UPC .....	809164014324
SKU .....	SAMBT4
HEIGHT .....	12"
WIDTH .....	20.5"
DEPTH .....	9"
WEIGHT .....	18.6lb

## MEDIAONE BT5

UPC .....	809164014331
SKU .....	SAMBT5
HEIGHT .....	14"
WIDTH .....	23"
DEPTH .....	10.75"
WEIGHT .....	25.3lb

\* DIMENSIONS AND WEIGHTS BOXED  
 \*\* MASTER CARTON QUANTITY (ALL): 1

# SAMSON®

# MEDIAONE 10S

Active Studio Subwoofer



MediaOne 10S rear panel



Home Theater

Samson's MediaOne 10S Active Studio Subwoofer is the ideal subwoofer for all your multimedia needs. Whether you're listening to music, producing tracks, watching videos or gaming, the MediaOne 10S offers premium performance with incredible low-end clarity. It's the perfect addition to any home studio and entertainment center, as well as Samson MediaOne Series active studio monitor setups.

The MediaOne 10S has been designed from the ground up to provide accurate monitoring of low frequencies and produce engaging, clear bass. With a powerful 10" copolymer woofer and tuned bass reflex port, the MediaOne 10S will enhance any monitoring setup with an extended low frequency response. In addition, its all-wood cabinet construction and elegant protective mesh grill assure the subwoofer looks as good in your home studio, living room or den as it sounds.

The back panel of the MediaOne 10S features RCA inputs for directly connecting your music source, as well as RCA outputs to hook up your main monitors. It also features Speaker Level input and output terminals for connecting A/V receivers and/or additional speakers to expand home theater setups. In addition, the MediaOne 10S offers a Variable Low Pass frequency control so you can personalize your low-end preferences.

## FEATURES

- 100 watts of power
- 10" copolymer woofer with butyl surround
- Down-firing tuned bass reflex port
- Variable Low Pass frequency control
- RCA inputs and outputs
- Speaker Level inputs and outputs for stereo system connections
- Phase switch
- Subwoofer Volume control
- Selectable Auto Sleep mode
- Protective mesh grill

## MEDIAONE 10S

UPC .....	809164017752
SKU .....	SAM10S
HEIGHT .....	19"
WIDTH .....	19"
DEPTH .....	18.75"
WEIGHT .....	TBD
MASTER CARTON QUANTITY: 1	

\* DIMENSIONS AND WEIGHT BOXED

# SAMSON®



# STUDIO GT

Active Studio Monitors with USB Audio Interface



Moving beyond the boundaries of a typical studio monitor, Studio GT combines exceptional monitoring performance with a USB audio interface, providing you with a complete desktop solution for recording audio to your computer.

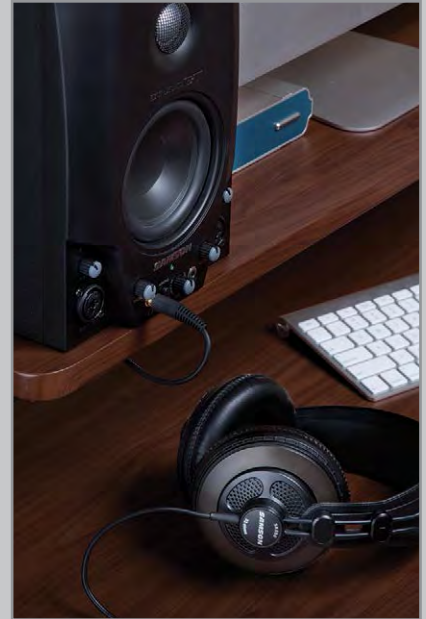
Samson's Studio GT offers professional, accurate monitoring thanks to its 4.25" magnetically shielded, inverted cone, copolymer woofer and its 1" silk dome high frequency driver. Equipped with 2 x 20 watts of internal power, Studio GT provides the same precise reproduction of highs and lows that you would expect from Samson monitors, but with the added convenience of a USB audio interface.

Studio GT houses two mic and instrument/line inputs for simultaneous recording of vocals and instruments along with gain control and clip LED, so you can customize your levels for the best possible sound. The unit also provides two 1/8" stereo headphone outputs with independent level controls. This enables two users to plug in, record and even monitor simultaneously. Plus, a 2-position switch for no-latency direct mono and stereo monitoring lets you set the audio of the headphone outs to meet your own specific preferences.

Designed to make home recording easy and professional, Studio GT includes Cakewalk® Sonar LE music production software for enhanced control over the development of your creations. Thanks to the versatile recording and monitoring solutions provided by Studio GT, it has never been easier to create professional, studio-quality tracks on any Mac or PC.

## FEATURES

- Active studio monitors with USB audio interface
- 4.25" magnetically shielded, inverted cone, copolymer woofer
- 1" silk dome high frequency driver
- 2 x 20 watts of internal stereo power
- Two combination mic and instrument/line inputs
- Two 1/8" stereo headphone outputs with level controls
- Mic and instrument/line gain control with clip LED
- 16-bit 44.1kHz/48kHz
- Stereo RCA and 1/8" aux inputs
- 2-position switch for no-latency direct stereo and mono monitoring
- Mix control to balance computer and audio sources
- Includes Cakewalk® Sonar LE music production software
- USB and speaker cable included



Record, mix and master



USB audio interface

## STUDIO GT

UPC .....	809164009672
SKU .....	SASGT4
HEIGHT .....	9.5"
WIDTH .....	22"
DEPTH .....	12.5"
WEIGHT .....	16.95lb
MASTER CARTON QUANTITY: 1	

\* DIMENSIONS AND WEIGHT BOXED

# SAMSON®

# STUDIO GT PRO

Active Studio Monitors with C01 Condenser Mic



With Samson's Studio GT Pro, you get everything you need to turn your computer in to a complete music production solution. This package features a pair of Studio GT Active Studio Monitors with USB Audio Interface, a C01 Condenser Microphone and Cakewalk® Sonar LE Production Software. Bundled accessories include an desktop stand, USB cable, XLR microphone cable, windscreen and more. It's never been easier to create professional, studio-quality recordings on your computer.

Moving beyond the boundaries of typical studio monitors, Studio GT combines exceptional monitoring performance with a USB audio interface. These active studio monitors provide professional, accurate monitoring thanks to their 4.25" magnetically-shielded copolymer woofers and 1" silk dome high frequency tweeters. Equipped with 2 x 20 watts of power, Studio GT provides the same precise reproduction of highs and lows that you would expect from all Samson studio monitors, but with the added convenience of a USB audio interface.

Great for recording vocals, acoustic instruments and drums, Samson's C01 Condenser Microphone is accurate and detailed with warm bass and extended top end. The microphone's large, 19mm diaphragm produces a smooth, flat frequency response. It also features a LED for indicating 48V phantom power, gold-plated XLR connector, heavy gauge mesh grill and swivel stand mount.

Designed to make home recording easy and professional, Studio GT Pro includes Cakewalk® Sonar LE Production Software for enhanced control over your creations. Thanks to the versatile recording and monitoring solutions provided by Studio GT Pro, it has never been easier to create professional, studio-quality tracks on any Mac or PC.

## FEATURES

### Studio GT Active Studio Monitors

- 2 x 20 watts of internal stereo power
- 4.25" copolymer woofers with 1" silk dome tweeters
- Two combination mic and instrument/line inputs
- Records at 16-bit, 44.1kHz/48kHz resolution
- Two 1/8" stereo headphone outputs with level controls
- No-latency monitoring
- USB and speaker cables included

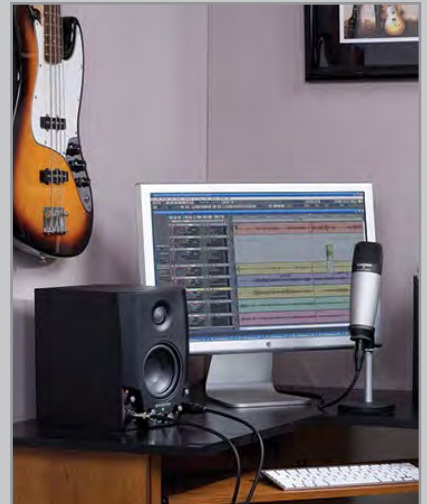
- LED indicates 48V phantom power
- Gold-plated XLR connector
- Heavy gauge mesh grill
- Swivel stand mount, desktop stand, windscreen and XLR microphone cable included

### Cakewalk® Sonar LE Production Software

- 64 audio tracks, 256 MIDI tracks
- 24 simultaneous effects
- 8 simultaneous virtual instruments
- 8 simultaneous inputs and outputs
- 24-bit, 192kHz resolution

### C01 Condenser Microphone

- Large, 19mm diaphragm
- Cardioid pickup pattern
- Smooth, flat frequency response



Record, mix and master



C01 Condenser Microphone



Desktop stand



Cakewalk® Sonar LE  
Production Software



Windscreen



6.5' USB cable



10' XLR microphone cable

## STUDIO GT PRO

UPC .....	809164012719
SKU .....	SASGT4PRO
HEIGHT .....	9.5"
WIDTH .....	22"
DEPTH .....	14"
WEIGHT .....	20.2lb
MASTER CARTON QUANTITY: 1	

\* DIMENSIONS AND WEIGHT BOXED

# SAMSON®

# METEOR M2

## Multimedia Speaker System



The ideal sound solution for desktops, laptops and tablets



Active speaker side panel

Samson's Meteor M2 Multimedia Speaker System is the ideal sound solution for desktops, laptops and tablets. Through the use of premium components, innovative sound design and custom digital signal processing, the full metal Meteor M2 breathes new sonic life into your favorite music, movies and games.

Aided by a solid, zinc die cast construction, the Meteor M2 delivers powerful full-range sound that goes way beyond its compact size. The stereo pair speaker system combines two 2.5" drivers and rear-ported passive radiators to produce exceptional low-end depth and punch normally confined to larger speakers and 3-piece systems with dedicated subwoofers.

Samson's Meteor M2 produces a detailed, true stereo sound field with serious output power. Custom digital signal processing delivers an optimal balance between the low, mid and high frequencies. This makes the Meteor M2s perfect for extended fatigue-free music playback sessions and watching movies. Ready to use right out of the box, the Meteor M2 comes with a speaker cable to connect the stereo pair, as well as an 1/8" Aux cable to instantly connect the speakers to your computer, tablet, smartphone or MP3 player. In addition, the Meteor M2's zinc die cast construction provides solid durability, while their sleek, elegant finish looks great on any desk.

### FEATURES

- Compact multimedia speaker system
- Sold as a stereo pair (one active speaker, one passive speaker)
- 2.5" drivers
- Additional rear-ported passive radiators produce full-range audio
- Crystal clear high-end performance
- Exceptional bass response
- Side panel Power (I/O) button and Volume control
- Includes speaker (integrated on passive speaker) and 1/8" Aux cables
- Rugged zinc die cast construction
- Sleek, elegant finish

### METEOR M2

UPC .....	809164016694
SKU .....	SAMTRSP
HEIGHT .....	9.25"
WIDTH .....	8.75"
DEPTH .....	6"
WEIGHT .....	5.5lb
MASTER CARTON QUANTITY: 4	

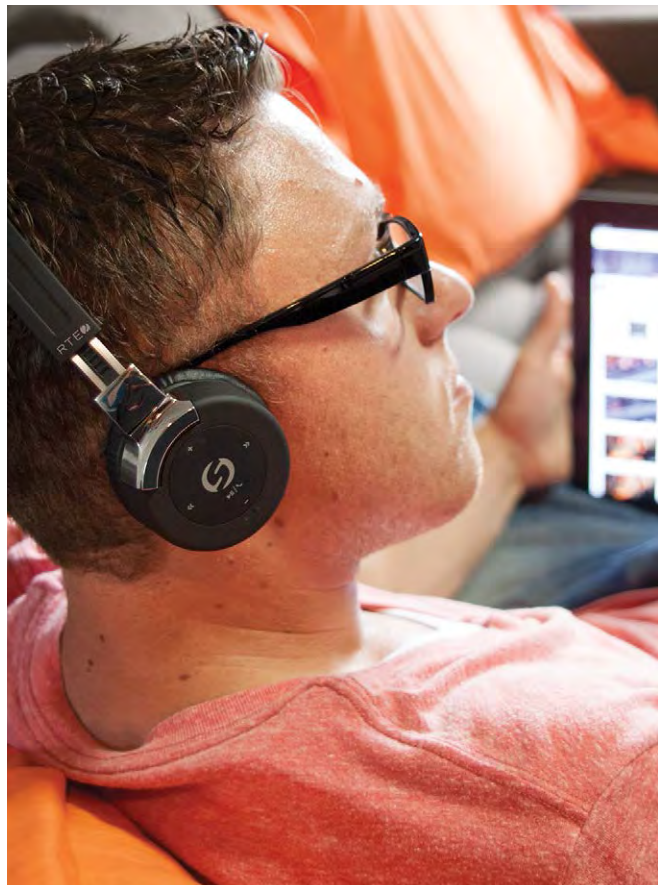
\* DIMENSIONS AND WEIGHT BOXED

# SAMSON®



# HEADPHONES

RTE Series | SR Series



# RTE 2

## Bluetooth® Headphones



Samson's RTE 2 Bluetooth Headphones deliver immersive, studio-quality audio in a comfortable, low-profile design. Featuring Samson's signature digital voicing, the RTE 2s provide enhanced sonic detail with the freedom and reliability that defines Samson wireless performance.

The RTE 2 headphones pair seamlessly with Bluetooth-compatible devices such as laptops, tablets and smartphones to wirelessly stream music up to 30' away from the audio source. They're perfect for formal (business, office), casual (music, movies, games) and active (travel, fitness) lifestyles. The RTE 2s feature a variety of controls on the right ear cup that allow you to move both forward and backward through your playlists, handle volume adjustments, as well as pause your music when the outside world requires your attention. Ideal for use with smartphones, the RTE 2s have an integrated microphone, as well as a Receive/End call button on the right ear cup, so you can take calls without ever having to touch your phone.

With a built-in rechargeable lithium ion battery, the RTE 2s can operate for over 10 hours at a full listening level and 200 hours in standby mode. The headphones can be charged from your computer via the included USB cable. For those who still enjoy wired headphones, the RTE 2s have an 1/8" (3.5mm) input for connecting directly to your audio source (1/8" connector cable also included). Featuring premium 40mm drivers, the on-ear design of the RTE 2s minimizes noise from the outside world. In addition, the headphones' low-profile, cushioned ear cups and adjustable headband provide an incredibly comfortable, secure fit no matter where you take them.

Re-route your world with unparalleled sound, comfort and freedom: Samson's RTE 2 Bluetooth Headphones.

### FEATURES

- Bluetooth connectivity to wirelessly stream audio
- Over 30' Bluetooth operating range from music source
- Samson's signature digital voicing
- Immersive, full-range sound
- Premium 40mm drivers
- Low-profile, on-ear headphones with cushioned ear cups and headband
- Portable design with 90° pivoting ear cups that sit flat within included protective zippered carry case
- Ear cup Play/Pause, Next, Back, Volume +, Volume – playlist commands
- Ear cup Receive/End call control
- Onboard microphone for hands-free phone calls
- 1/8" (3.5mm) input for wired operation
- Built-in rechargeable lithium ion battery
- Over 10 hours of full-level listening, 200 hours on standby
- APT-X technology for streaming uncompressed file formats
- NFC for quick touch pairing with compatible mobile devices
- Includes USB charging cable and 1/8" connector cable



Bluetooth connectivity to wirelessly stream audio



Music, movies and games



Business and office calls

### RTE 2

UPC .....	809164017448
SKU .....	SARTE2
HEIGHT .....	7.75"
WIDTH .....	7"
DEPTH .....	2.25"
WEIGHT .....	11b

MASTER CARTON QUANTITY: 10

\* DIMENSIONS AND WEIGHT BOXED

# SAMSON®

# RTE X

## Active Noise Cancelling Headphones



Samson unites its experience in professional acoustic design with the latest ambient noise filtration technology to introduce the new RTE X Active Noise Cancelling Headphones. Featuring a lightweight, over-ear design with ultra-soft cushioning, the RTE X headphones are ideal for enjoying powerful, studio-quality audio with superior sonic clarity in loud environments and extended travel settings.

The RTE Xs feature premium 40mm drivers with rare earth neodymium magnets. Upon activation, the Active Noise Cancellation (ANC) technology enables the headphone drivers to create 20dB (90%) of external noise reduction. As a result, you'll hear all the nuances of your music as sound engineers and producers originally intended.

When necessary interruptions arise, the RTE X headphones are equipped with a specialized 1-touch Monitor feature. This temporarily disables the ANC for when your attention is needed. The ANC can be used for over 20 hours via a single AAA battery. For increased portability, both ear cups pivot 90° to allow the RTE Xs to sit flat within the included protective zippered carry case.

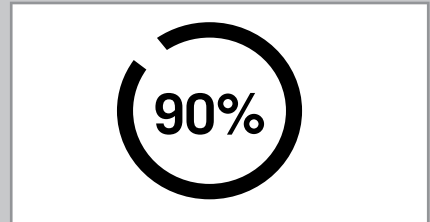
Re-route your world with unparalleled sound, comfort and technology: Samson's RTE X Active Noise Cancelling Headphones.

### FEATURES

- Active Noise Cancellation (ANC) technology
- Samson's signature studio reference voicing
- Studio-quality frequency response
- Premium 40mm neodymium drivers
- Lightweight, over-ear headphones with cushioned ear cups and headband
- Portable design with 90° pivoting ear cups that sit flat within included protective zippered carry case
- 1-touch Monitor mode
- 20 hours of battery life (for ANC only) via single AAA battery
- Unlimited Passive mode operation
- Includes detachable audio cable



Includes detachable cable and carry case



Reduces 90% of external noise

### RTE X

UPC .....	809164017868
SKU .....	SARTEX
HEIGHT .....	8"
WIDTH .....	8.25"
DEPTH .....	2.5"
WEIGHT .....	TBD

MASTER CARTON QUANTITY: 10

\* DIMENSIONS AND WEIGHT BOXED

# **SAMSON**

# SR450 / SR550

## Studio Headphones



SR450 - On-Ear Design



SR550 - Over-ear design

Samson's latest Studio Reference Series headphones offer exceptional sonic clarity and comfort in two durable, lightweight designs that are perfect for studio and mobile applications.

The SR450 on-ear and SR550 over-ear headphones both offer a closed-ear design for maximum sound isolation. These models also feature premium 40mm drivers with rare earth magnets that generate powerful audio with a wide frequency response. Designed for extended listening sessions, the SR450 and SR550 headphones each feature memory foam cushioned ear cups and headband for an incredibly comfortable, secure fit.

With a rugged design and natural frequency response, Samson's new SR450 and SR550 headphones deliver excellent sound in the studio, on the streets and everywhere in between.

### FEATURES

- **SR450:** On-ear studio headphones
- **SR550:** Over-ear studio headphones
- Dynamic, detailed audio
- Closed-back design for enhanced sound isolation
- Premium 40mm drivers with rare earth magnets
- Wide frequency range
- Cushioned ear cups
- Adjustable padded headband
- 1/8" to 1/4" adapter included

### SR450

UPC .....	809164017660
SKU .....	SASR450
HEIGHT .....	7.25"
WIDTH .....	6.25"
DEPTH .....	2.75"
WEIGHT .....	0.5lb

### SR550

UPC .....	809164017677
SKU .....	SASR550
HEIGHT .....	7.75"
WIDTH .....	6.5"
DEPTH .....	3.25"
WEIGHT .....	0.5lb

\* DIMENSIONS AND WEIGHTS BOXED

\*\* MASTER CARTON QUANTITY (ALL): 10

# SAMSON®

# SR850 / SR950

Professional Studio Reference Headphones

SR850 - Open-Ear Design



SR950 - Closed-ear design

Samson's SR850 (open ear) and SR950 (closed-ear) Professional Studio Reference Headphones offer an outstanding listening solution for musicians, sound engineers and general music enthusiasts alike. With solid bass response and ultra-clear highs, these headphones ensure complete comfort and accurate headphone monitoring.

The SR850s offer an open ear design for enhanced ambient listening environment, allowing appropriate bleed for better stereo imaging and a wider sound stage. Meanwhile, the SR950s offer a closed ear design for maximum sound isolation and noise reduction, allowing the most accurate stereo imaging possible. In the case of both models, 50mm drivers offer exceptional sound reproduction and wide dynamic range to instill confidence in your final mix or simply provide outstanding sound quality for playback.

Both with a self-adjusting headband for a secure, natural fit, the SR850 and SR950s provide total comfort for extended studio sessions. An 1/8" to 1/4" gold-plated adapter is included with each pair of headphones.

## FEATURES

- Professional studio reference headphones
- **SR850:** Open ear design for maximum isolation, 10Hz–30kHz frequency response
- **SR950:** Closed ear design for maximum isolation, 10Hz–25kHz frequency response
- 50mm drivers for exceptional reproduction and wide dynamic range
- 32Ω impedance
- Self-adjusting headband for a secure, comfortable fit
- 1/8" to 1/4" gold-plated adapter included

## SR850

UPC .....	809164009788
SKU .....	SASR850C
HEIGHT .....	8"
WIDTH .....	8"
DEPTH .....	4.75"
WEIGHT .....	1.1lb

## SR950

UPC .....	809164014188
SKU .....	SASR950
HEIGHT .....	8.75"
WIDTH .....	9.25"
DEPTH .....	4.5"
WEIGHT .....	1.4lb

\* DIMENSIONS AND WEIGHTS BOXED

\*\* MASTER CARTON QUANTITY (ALL): 12

# SAMSON®





# WIRELESS SYSTEMS

Synth 7 | Concert | Stage | AirLine



# SYNTH 7

## Professional UHF Wireless Systems



Samson's new Synth 7 raises the standard for premium UHF wireless performance. Available in five unique configurations (Handheld, Guitar, Headset, Earset, Presentation), the Synth 7 system features rugged all-metal construction, as well as dynamic LCD setup and monitoring options. Together with advanced system features and flawless operation, Synth 7 is the future of professional wireless.

Synth 7 features the all-metal, rack-mountable UR7 Wireless Receiver with a stage-inspired, multifunctional full-color display. The vibrant LCD hosts the system's auto frequency spectrum analyzer that identifies the best channel for a given performance location. Via the LCD, you can also manually select from over 100 channels, monitor the battery life of your transmitter and set Squelch preferences. Synth 7 provides a best-in-class 300' wireless range and can support the simultaneous operation of up to 20 systems (region dependent).

The Synth 7 Handheld features the all-metal UH7 Handheld Transmitter with a Samson Q8 microphone capsule for incredible sound quality, minimal handling noise and superior feedback rejection. Meanwhile, the all-metal UB7 Beltpack Transmitter comes with the Synth 7 Guitar (with Samson GC32 cable), Headset (with Samson QV headset mic), Earset (with Samson SE10 earset mic) and Presentation (with Samson LM10 lavalier mic) configurations. Both transmitters feature a backlit LCD for monitoring battery life (up to 15 hours on two AA batteries) and 1-touch clean Mute control. Lastly, convenient IR set technology wirelessly matches the operating channel of the transmitter to the receiver.

## FEATURES

### SYNTH 7 WIRELESS SYSTEMS

- Premium UHF wireless systems
- Rugged all-metal construction on receiver and transmitter
- 1/4" audio cable, AC adapter and rackmount kit included
- Available in handheld, guitar, headset, earset and presentation configurations

### UH7 HANDHELD TRANSMITTER

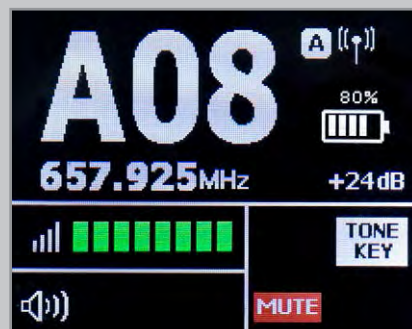
- Q8 Professional Dynamic Microphone capsule
- LCD indicates battery level and operating channel
- Offers up to 15 hours of battery life using two AA batteries
- 300' operating range

### UB7 BELTPACK TRANSMITTER

- LCD indicates battery level and operating channel
- Offers up to 15 hours of battery life using two AA batteries
- 300' operating range

### UR7 WIRELESS RECEIVER

- Multifunctional full-color LCD
- 100 available channels across a 25MHz band
- Up to 20 systems can be operated simultaneously (region dependent)
- Auto frequency spectrum analyzer
- IR set automatically links with transmitter
- Lock setting for uninterrupted performance
- Selectable Squelch control (Low, Mid, High)



### SYNTH 7 HANDHELD

UPC.....809164213239, 809164214359  
 SKU.....SWS7SHQ8-C, SWS7SHQ8-I  
 HEIGHT ..... 12"  
 WIDTH ..... 15.75"  
 DEPTH ..... 3.5"  
 WEIGHT ..... 5.5lb

### SYNTH 7 GUITAR

UPC.....809164213246, 809164214328  
 SKU.....SWS7SBGT-C, SWS7SBGT-I  
 HEIGHT ..... 12"  
 WIDTH ..... 15.75"  
 DEPTH ..... 3.5"  
 WEIGHT ..... 5.5lb

### SYNTH 7 HEADSET

UPC.....809164213781, 809164214106  
 SKU.....SWS7SBQV-C, SWS7SBQV-I  
 HEIGHT ..... 12"  
 WIDTH ..... 15.75"  
 DEPTH ..... 3.5"  
 WEIGHT ..... 5.5lb

### SYNTH 7 EARSET

UPC.....809164213260, 809164214021  
 SKU.....SWS7SBSE10-C, SWS7SBSE10-I  
 HEIGHT ..... 12"  
 WIDTH ..... 15.75"  
 DEPTH ..... 3.5"  
 WEIGHT ..... 5.5lb

### SYNTH 7 PRESENTATION

UPC.....809164213253, 809164213949  
 SKU.....SWS7SBLM10-C, SWS7SBLM10-I  
 HEIGHT ..... 12"  
 WIDTH ..... 15.75"  
 DEPTH ..... 3.5"  
 WEIGHT ..... 5.5lb

\* DIMENSIONS AND WEIGHTS BOXED

\*\* MASTER CARTON QUANTITY (ALL): 8

# SAMSON

# CONCERT 99

## Frequency-Agile UHF Wireless Systems



Samson takes the worry out of wireless with the frequency-agile Concert 99 UHF Wireless System. Available in five unique configurations (Handheld, Headset, Guitar, Earset, Presentation), Concert 99 offers easy setup with a dynamic user interface, exceptional durability and premium sound quality. The result is unprecedented value for performers and presenters in search of reliable wireless freedom.

Enabling a best-in-class 300' wireless range, the Concert 99 system features the all-metal, rack-mountable CR99 Wireless Receiver. The CR99 has a backlit LCD that provides convenient monitoring of transmitter battery life, operating channel (96 total channels available) and audio levels, particularly in dark environments. Capable of supporting up to 16 systems simultaneously (region dependent), the receiver also provides 1-touch Auto Scan for ultra-fast setup. Lastly, the CR99 also features IR set technology to wirelessly match the operating channel of the transmitter to the receiver.

The CH99 Handheld Transmitter features a Samson Q8 microphone capsule for natural vocals and superior feedback rejection. The CB99 Beltpack Transmitter features a metal clip and convenient 1-touch Mute control. Beltpack transmitter configurations include Headset (Samson QV headset mic), Guitar (Samson GC32 cable), Earset (Samson SE10 earset mic) and Presentation (Samson LM10 lavalier mic). Concert 99 transmitters provide over eight hours of operation on two AA batteries.

### FEATURES

#### CONCERT 99 WIRELESS SYSTEMS

- High-performance UHF wireless systems
- 1/4" audio cable and rackmount kit included
- Available in handheld, headset, guitar, earset and presentation configurations

#### CH99 HANDHELD TRANSMITTER

- Q8 Professional Dynamic Microphone capsule
- Offers up to eight hours of battery life using two AA batteries
- 300' operating range

#### CB99 BELTPACK TRANSMITTER

- 1-touch Mute control
- Offers up to eight hours of battery life using two AA batteries
- 300' operating range

#### CR99 Wireless Receiver

- Rugged all-metal construction
- Multifunctional backlit LCD
- True diversity antenna design (removable antennas)
- 96 operating channels across 25MHz bandwidth
- Up to 16 systems can be operated simultaneously (region dependent)
- Tone Key technology prevents interference
- 1-touch Auto Scan
- IR set automatically links with transmitter
- Balanced XLR and 1/4" outputs

#### CONCERT 99 HANDHELD

UPC.....809164211228, 809164211235  
 SKU.....SWC99HQ8-D, SWC99HQ8-P

#### CONCERT 99 GUITAR

UPC.....809164211167, 809164211174  
 SKU.....SWC99BGT-D, SWC99BGT-P

#### CONCERT 99 HEADSET

UPC.....TBD  
 SKU.....TBD

#### CONCERT 99 EARSET

UPC.....809164211204, 809164211211  
 SKU.....SWC99BSE10-D, SWC99BSE10-P

#### CONCERT 99 PRESENTATION

UPC.....809164211181, 809164211198  
 SKU.....SWC99BLM10-D, SWC99BLM10-P

# SAMSON®

# CONCERT 288

## Dual-Channel Wireless Systems



Handheld System



Pro Combo System



Presentation System



All-In-One System

Samson takes the worry out of wireless with the Concert 288 Wireless System. Available in four unique configurations (Handheld, Pro Combo, All-In-One, Presentation) with easy setup, flawless operation and premium sound, it's the ideal high-performance UHF wireless solution for vocal performances, presentations, Q&A sessions, house of worship, educational applications and more where two users are needed.

## FEATURES

### CONCERT 288 SYSTEMS

- Dual-channel, high-performance UHF wireless systems
- 1/4" audio cable, AC adapter and rackmount kit included
- Available in Handheld, Pro Combo, All-In-One and Presentation configurations
- Transmitters offer up to eight hours of battery life using two AA batteries
- 300' operating range

### CR288 WIRELESS RECEIVER

- Multiple frequency options for interference-free performance in any environment
- Up to 24 systems can be operated simultaneously (region dependent)
- Separate Volume controls for each wireless signal
- Dual balanced XLR outputs for routing signals to two separate mixer channels
- 1/4" unbalanced mix output to combine signals to one output channel

### CONCERT 288 HANDHELD WIRELESS SYSTEM

- Two CH288 Handheld Transmitters with Q6 Dynamic Microphone capsules
- One CR288 Wireless Receiver

### CONCERT 288 PRO COMBO WIRELESS SYSTEM

- One CH288 Handheld Transmitter with Q6 Dynamic Microphone capsule
- One CB288 Beltpack Transmitter
- One SE10 Earset Microphone with Miniature Condenser Capsule, moisture-resistant design and locking connector
- One CR288 Wireless Receiver

### CONCERT 288 ALL-IN-ONE WIRELESS SYSTEM

- One CH288 Handheld Transmitter with Q6 Dynamic Microphone capsule
- One CB288 Beltpack Transmitter
- One LM5 Lavalier Microphone with locking connector
- One HS5 Headset Microphone with locking connector
- One CR288 Wireless Receiver

### CONCERT 288 PRESENTATION WIRELESS SYSTEM

- Two CB288 Beltpack Transmitters
- Two LM5 Lavalier Microphones with locking connector
- Two HS5 Headset Microphones with locking connector
- One CR288 Wireless Receiver

### CONCERT 288 HANDHELD

UPC.....809164213178, 809164213185  
 SKU.....SWC288HQ6-H, SWC288HQ6-I  
 HEIGHT.....13"  
 WIDTH.....14"  
 DEPTH.....3.5"  
 WEIGHT.....4lb

### CONCERT 288 PRO COMBO

UPC.....809164214366, 809164214373  
 SKU.....SWC288PROC-H, SWC288PROC-I  
 HEIGHT.....13"  
 WIDTH.....14"  
 DEPTH.....3.5"  
 WEIGHT.....4lb

### CONCERT 288 ALL-IN-ONE

UPC.....809164214427, 809164214434  
 SKU.....SWC288ALL-H, SWC288ALL-I  
 HEIGHT.....13"  
 WIDTH.....14"  
 DEPTH.....3.5"  
 WEIGHT.....4lb

### CONCERT 288 PRESENTATION

UPC.....809164214397, 809164214403  
 SKU.....SWC288PRES-H, SWC288PRES-I  
 HEIGHT.....13"  
 WIDTH.....14"  
 DEPTH.....3.5"  
 WEIGHT.....4lb

\* DIMENSIONS AND WEIGHTS BOXED  
 \*\* MASTER CARTON QUANTITY (ALL): 16

# SAMSON

# CONCERT 88

## 16-Channel True Diversity UHF Wireless Systems



Samson's Concert 88 Wireless Systems offer high performance UHF wireless solutions for a variety of applications where the freedom of mobility is a must. Available in five unique configurations (Handheld, Guitar, Headset, Earset, Presentation), Concert 88 systems are perfect for musicians, business professionals, educators and others looking for stunning sound and versatility without cables.

With a 300' wireless range, the frequency-agile Concert 88 system allows for up to 16 systems to operate simultaneously (region dependent). At the core of the system is the CR88 Wireless Receiver. Featuring a true diversity design, the CR88 minimizes signal dropouts during performance. If a dropout does occur, the CR88's tone key and auto mute functions eliminate any background noise until the signal is restored. The receiver also includes a 7-segment Channel LED for optimal monitoring. Lastly, the CR88 features IR set technology to wirelessly match the operating channel of the transmitter to the receiver.

The CH88 Handheld Transmitter features a Samson Q6 Dynamic Microphone capsule for a high level of accuracy and audio performance in a variety of applications. The CB88 Beltpack Transmitter configurations include Guitar (Samson GC32 cable), Headset (Samson HS5 headset mic), Earset (Samson SE10 earset mic) and Presentation (Samson LM5 lavalier mic). Concert 88 transmitters provide over eight hours of operation on two AA batteries.

### FEATURES

#### CONCERT 88 WIRELESS SYSTEMS

- High-performance UHF wireless systems
- Rackmount kit included
- Available in handheld, guitar, headset, earset and presentation configurations

#### CR88 WIRELESS RECEIVER

- True diversity design minimizes dropouts
- Up to 16 systems can be operated simultaneously (region dependent)
- Tone key and auto mute functions eliminate background noise during dropouts
- Infrared set links the receiver and transmitter channels
- Balanced XLR and 1/4" outputs

#### CH88 HANDHELD TRANSMITTER

- Q6 Dynamic Microphone capsule
- Offers up to eight hours of battery life using two AA batteries
- 300' operating range

#### CB88 BELTPACK TRANSMITTER

- Offers up to eight hours of battery life using two AA batteries
- 300' operating range



#### CONCERT 88 HANDHELD

UPC.....809164211143, 809164211150  
 SKU.....SWC88HCL6-C, SWC88HCL6-D  
 HEIGHT.....9.75"  
 WIDTH.....12"  
 DEPTH.....3.5"  
 WEIGHT.....2.85lb

#### CONCERT 88 GUITAR

UPC.....809164211082, 809164211099  
 SKU.....SWC88BGT-C, SWC88BGT-D  
 HEIGHT.....9.75"  
 WIDTH.....12"  
 DEPTH.....3.5"  
 WEIGHT.....2.5lb

#### CONCERT 88 HEADSET

UPC.....809164211105, 809164211112  
 SKU.....SWC88BHS5-C, SWC88BHS5-D  
 HEIGHT.....9.75"  
 WIDTH.....12"  
 DEPTH.....3.5"  
 WEIGHT.....2.5lb

#### CONCERT 88 EARSET

UPC.....809164212959, 809164212966  
 SKU.....SWC88BCS-C, SWC88BCS-D  
 HEIGHT.....9.75"  
 WIDTH.....12"  
 DEPTH.....3.5"  
 WEIGHT.....2.5lb

#### CONCERT 88 PRESENTATION

UPC.....809164211129, 809164211136  
 SKU.....SWC88BLM5-C, SWC88BLM5-D  
 HEIGHT.....9.75"  
 WIDTH.....12"  
 DEPTH.....3.5"  
 WEIGHT.....2.5lb

\* DIMENSIONS AND WEIGHTS BOXED

\*\* MASTER CARTON QUANTITY (ALL): 16

# SAMSON®

# CONCERT 88 CAMERA

Frequency-Agile UHF Wireless System



Samson's Concert 88 Camera Wireless System delivers high-quality audio to videographers and filmmakers. The frequency-agile, ultra-portable Concert 88 Camera system offers 16 selectable channels for interference-free operation, a best-in-class 300' wireless range and rechargeable lithium ion battery for reliability and freedom that defines Samson Wireless performance.

At the core of the Concert 88 Camera system is the CR88V Micro Wireless Receiver, which includes a removable shoe mount adapter and metal clip for strap or belt mounting. The CR88V provides 12 hours of operation from a removable lithium ion battery. The receiver also features an 1/8" output with level control in addition to an 1/8" headphone monitor output. Audio reaches the receiver via the CB88 Beltpack Transmitter and Samson's LM10 Omnidirectional Lavalier Microphone (micro-miniature condenser capsule). The CB88 Beltpack features popless 1-touch Mute control and metal belt clip.

Convenient IR set technology wirelessly matches the operating channel of the transmitter to the receiver. In addition, aggressive interference prevention is provided by Tone Key technology, a 3-position Squelch function and a true diversity antenna design.

## FEATURES

### CONCERT 88 CAMERA SYSTEM

- High-performance professional UHF wireless system
- Frequency-agile design with 16 selectable channels

### CB88 BELTPACK TRANSMITTER

- LM10 Omnidirectional Lavalier Microphone with micro-miniature condenser capsule
- Offers up to eight hours of battery life using two AA batteries
- 300' operating range
- Metal clip for strap mounting

### CR88V MICRO WIRELESS RECEIVER

- True diversity design minimizes dropouts
- Up to 16 systems can be operated simultaneously (region dependent)
- Tone key and auto mute functions eliminate background noise during dropouts
- Infrared set wirelessly links the receiver and transmitter
- 1/8" output with level control
- 1/8" headphone monitor output with level control
- Offers 12 hours of battery life from removable lithium ion battery
- Battery level indicator
- Digital camera-style external battery charger
- Removable hot shoe adapter mounts receiver to camera



Ideal for use with DSLR cameras



CR88V Micro Wireless Receiver front panel



CR88V Micro Wireless Receiver side panel

**SAMSON**

# STAGE XPD1

## USB Digital Wireless Systems



Handheld System



HS5 Headset System



LM5 Lavalier System



Wireless receiver built into a USB stick

Samson's Stage XPD1 USB Digital Wireless System brings the convenience of wireless to your computer recordings and beyond. Available in three unique configurations (Handheld, Headset, Lavalier) that feature a wireless receiver built into a USB stick and a high-quality handheld dynamic microphone transmitter, the Stage XPD1 allows you to wirelessly capture stunning audio straight to your Mac/PC and favorite digital audio software. It's the ideal wireless system for podcasting, YouTube performances, karaoke video games, voice over projects and much more.

The RXD1 Wireless Receiver is USB powered and features plug-and-play operation with no driver installation required. Simply connect the RXD1 directly to your computer via USB and start working with your favorite DAWs, VoIP communication software and applications for speech-to-text dictation. It's also compatible with iPads and iPhones (4S and later) using Apple's Lightning USB Camera Adapter or Camera Connection Kit (30-pin).

The Stage XPD1 Handheld system includes the HXD1 Handheld Transmitter, featuring a high-quality dynamic mic capsule designed to provide exceptional sound reproduction for spoken word presentations, as well as singing applications and more. The Stage XPD1 Headset and Lavalier systems both feature the PXD1 Beltpack Transmitter. The Headset system comes with a Samson HS5 headset mic that is perfect for active performances, while the Lavalier system includes a Samson LM5 lavalier mic that is ideal for discreet spoken word presentations. These transmitters offer over 100' of wireless range (environment dependent), operating in the license-free 2.4GHz frequency band, which is free from interference caused by television stations and other white space broadcast devices.

### FEATURES

- 2.4GHz digital wireless systems
- Wireless receiver built into a USB stick
- **Handheld:** Handheld dynamic microphone transmitter
- **Headset:** Beltpack transmitter with Samson HS5 headset microphone
- **Lavalier:** Beltpack transmitter with Samson LM5 lavalier microphone
- Easy pairing for fast set up
- 100' operating range (environment dependent)
- Ideal for podcasting, karaoke, voice over projects and more
- Record wirelessly to your favorite DAW or voice recognition software on your Mac/PC
- Transmitters operates on two AA batteries (not included)
- Compatible with select Samson Expedition Series Portable PAs



Wirelessly record stunning audio straight to your Mac/PC with your favorite digital audio software



Compatible with select Samson Expedition Series Portable PA Systems

### STAGE XPD1 HANDHELD

UPC.....	809164213215
SKU.....	SWXPD1HQ6
HEIGHT.....	12"
WIDTH.....	4.75"
DEPTH.....	2.75"
WEIGHT.....	0.95lb
MASTER CARTON QUANTITY:	20

### STAGE XPD1 HEADSET

UPC.....	809164215820
SKU.....	SWXPD1BHS5
HEIGHT.....	6.5"
WIDTH.....	8.5"
DEPTH.....	3.4"
WEIGHT.....	TBD
MASTER CARTON QUANTITY:	15

### STAGE XPD1 PRESENTATION

UPC.....	809164215813
SKU.....	SWXPD1BLM5
HEIGHT.....	6.5"
WIDTH.....	8.5"
DEPTH.....	3.4"
WEIGHT.....	TBD
MASTER CARTON QUANTITY:	15

\* DIMENSIONS AND WEIGHT BOXED

# SAMSON®

# STAGE v466

## Quad Handheld Wireless System



Designed for four times the versatility, Samson's Stage v466 Quad Handheld Wireless System let's you use four microphones simultaneously with a single receiver. It's the ideal wireless solution for vocalists, karaoke performers, DJs or any application where multiple mics are needed.

At the core of the Stage v466 system is a full-rack quad VHF wireless receiver. The receiver's front panel features an RF channel indicator and a large rotary volume knob for each channel. The receiver also offers two tuned antennas, XLR mix output, as well as four 1/4" outputs that give you the option for each transmitter pair mixed or each transmitter individually. The Stage v466 system comes with two 1/4" to 1/4" cables.

The Stage v466 system includes four HT6 dynamic handheld microphone transmitters, each with a Samson H6 dynamic microphone element for capturing clear, accurate vocals. Each transmitter operates for up to ten hours on a single 9-volt battery (four included) and offers a handy audio on/off switch.

With the meticulous engineering, state of the art technology and impressive audio capabilities that are built into every Samson wireless system, the Stage v466 system ensures crystal clear operation and the most dependable quad-channel performance available.

### FEATURES

- SR466 full-rack quad VHF wireless receiver
- Four HT6 dynamic handheld microphone transmitters, each with H6 dynamic microphone element
- Each transmitter operates for ten hours on a single 9-volt battery
- Great RF reception for interference-free performance
- One XLR and four 1/4" outputs (transmitter pair mix and individual channel output options)
- Includes two 1/4" to 1/4" cables, AC adapter and four 9-volt batteries
- Available in two groups



LIVE SOUND 1/4" to 1/4" cable



LIVE SOUND XLR to XLR cable (not included)



HOME STEREO 1/4" to RCA cable (not included)

### STAGE v466 - CHANNELS A1, A2, A3 & A4

UPC ..... 809164210726

SKU ..... SWV466SHT6A

### STAGE v466 - CHANNELS B1, B2, B3 & B4

UPC ..... 809164210733

SKU ..... SWV466SHT6B

HEIGHT ..... 11.5"

WIDTH ..... 19.25"

DEPTH ..... 3.25"

WEIGHT ..... 4.8lb

MASTER CARTON QUANTITY: 8

\* DIMENSIONS AND WEIGHT BOXED

# SAMSON®



# STAGE v266 / v166

## Handheld Wireless Systems



Samson's Stage v166 and v266 Handheld Wireless Systems are designed to offer exceptional wireless performance in a variety of applications. Respectively, they're the ideal wireless solutions for one or two vocalists, karaoke performers, DJs or any application where reliable handheld wireless capability is needed.

At the core of the Stage v166 system is the SR166 VHF wireless receiver. The receiver's front panel features an RF channel indicator and a large rotary volume knob. The receiver also offers a tuned antenna and a 1/4" channel output. The Stage v166 system comes with a 1/4" to 1/4" cable. The Stage v166 system includes a HT6 dynamic handheld microphone transmitter, which features a Samson H6 dynamic microphone element for capturing clear, accurate vocals. The transmitter operates for up to ten hours on a single 9-volt battery (included) and offers a handy audio On/Off switch.

At the core of the Stage v266 system is the SR266 half-rack dual VHF wireless receiver. The receiver's front panel features an RF channel indicator and a large rotary volume knob for each channel. Its rear panel offers two tuned antennas, as well as two 1/4" outputs that allow for both mix and individual channel output options. The Stage v266 system comes with a 1/4" to 1/4" and a 1/4" to RCA cable. The Stage v266 system includes two HT6 handheld microphone transmitters, each with an H6 dynamic microphone element to capture clear, accurate vocals. Each transmitter operates for up to ten hours on a single 9-volt battery (two included) and offers a handy audio On/Off switch.

### FEATURES

#### STAGE v266

- SRv266 half-rack dual VHF wireless receiver
- Two HT6 dynamic handheld microphone transmitters, each with H6 dynamic microphone element
- Each transmitter operates for ten hours on a single 9-volt battery
- Great RF reception for interference-free performance
- Two 1/4" outputs feature mix and individual channel output options
- Includes 1/4" to 1/4" cable, 1/4" to RCA cable, AC adapter and two 9-volt batteries

#### STAGE v166

- SR166 VHF wireless receiver
- HT6 dynamic handheld microphone transmitter with H6 dynamic microphone element
- Transmitter operates for ten hours on a single 9-volt battery
- Great RF reception for interference-free performance
- 1/4" channel output
- Includes 1/4" to 1/4" cable, AC adapter and 9-volt battery



Stage v166



#### STAGE V166

UPC.....809164211259, 809164211242,  
809164211273, 809164211266  
SKU.....SWV166SHT6U-09, SWV166SHT6U-11,  
SWV166SHT6U-20, SWV166SHT6U-29  
HEIGHT .....8.75"  
WIDTH .....10.5"  
DEPTH .....3"  
WEIGHT .....1.95lb  
MASTER CARTON QUANTITY: 8

#### STAGE V266

UPC.....809164210429, 809164210436  
SKU.....SW266SHT6U-321, SW266SHT6U-611  
HEIGHT .....11"  
WIDTH .....14"  
DEPTH .....3"  
WEIGHT .....4lb  
MASTER CARTON QUANTITY: 16

**\* DIMENSIONS AND WEIGHTS BOXED**

# SAMSON®

# AIRLINE MICRO EARSET

## Wireless System



The AirLine Micro Wireless Earset System utilizes the latest in lithium ion battery technology and small, high-quality audio and RF components, representing a breakthrough that brings freedom and convenience to a new level of performance. The result is not only our smallest wireless system, but also our most comfortable, reliable and versatile system ever.

To eliminate continually changing batteries, Samson has designed this UHF wireless system to be fully rechargeable, supplying lithium ion rechargeable batteries and USB DC power inputs for both the AH2 transmitter and AR2 receiver. A handy docking station for the receiver also provides a USB DC input and a 3.5mm unbalanced audio output. Because of these convenient recharging capabilities, the days of constantly changing the batteries in your wireless system are over.

Leaving belt packs by the wayside, this system employs the AH2, a single earset transmitter for complete freedom and uninhibited movement. The transmitter features an omnidirectional microphone (available in beige or stainless steel) to ensure your voice is picked up and amplified even during periods of fast, heavy movement. This makes the AirLine Micro system ideal for fitness instructors as well as high-energy performers and presenters. Plus, its water resistant design protects the mic and transmitter from moisture and perspiration that can accumulate during intensely active performances.

Despite its modest size and inconspicuous appearance, the AR2 receiver boasts meticulous engineering that will provide professional sound reproduction and exceptional reliability. Like the AH2 transmitter, the AR2 also houses a rechargeable battery that will offer about seven hours of operation. A 3.5mm balanced mic/line level output and USB DC power input round out the features on this pioneering receiver.

When mobility is a factor in your performance, Samson's AirLine Micro Wireless Earset System offers the most discreet, comfortable and convenient wireless solution available.

### FEATURES

#### AirLine Micro Earset Wireless System

- Wireless UHF 600MHz system with micro-size AH2 transmitter and AR2 receiver
- Tone squelch and auto mute for clear operation
- Includes a convenient system carry case Includes AC adapter and charging cables

#### AH2 Transmitter

- Earset transmitter and omnidirectional microphone (available in beige or stainless steel) with no belt pack
- Lithium-ion rechargeable battery (5-6 hours of operation)
- USB DC input for recharging
- Single button operation for power, mute and volume
- Water resistant

#### AR2 Receiver

- Low-profile wireless receiver (2.36" x 1.67" x .51")
- Lithium-ion rechargeable battery (7-8 hours of operation)
- USB DC input for power and recharging
- 3.5mm unbalanced Mic/Line level output
- Multi-color LED displaying RF, low battery and power

#### AR2 Dock

- Provides secure base for AR2 receiver during operation and/or recharging
- USB DC input for power and recharging (cables included)
- 3.5mm balanced audio output (cables included)



Carry case included

### AIRLINE MICRO EARSET

UPC...Multiple Channels, See Sales Rep  
 SKU .....SWAM2SES  
 HEIGHT .....5.25"  
 WIDTH .....8.75"  
 DEPTH .....2.75"  
 WEIGHT .....1.35lb  
 MASTER CARTON QUANTITY: 24  
**\* DIMENSIONS AND WEIGHT BOXED**

# **SAMSON**

# AIRLINE MICRO CAMERA

## Wireless System



The AirLine Micro Camera Wireless System utilizes the latest in lithium-ion battery technology and small, high-quality audio and RF components, representing a breakthrough that is ideal for all video camera applications requiring outstanding audio, including DSLR video. The result is not only our smallest wireless camera system, but also our most reliable and versatile system ever.

To eliminate continually changing batteries, Samson has designed this wireless system to be fully rechargeable with lithium-ion batteries for both the AL2 transmitter and AR2 receiver. A handy double-docking station (AR2DT) provides USB DC power to both units, as well as a 3.5mm unbalanced audio output for the receiver. Because of these convenient recharging capabilities, the days of replacing the batteries in your wireless camera system are over.

This system employs the AL2 belt-pack micro transmitter for complete freedom and uninhibited mobility. The transmitter features an excellent sounding LM10 omnidirectional lavalier microphone. In addition, the unit features single button operation for power, mute and volume, all of which can be easily monitored via a multi-color LED display.

The AR2 receiver boasts meticulous engineering that will provide professional sound reproduction for your videos. Like the AL2 transmitter, the AR2 houses a rechargeable battery that will offer about seven hours of operation. Because it is micro-sized, the unit is perfectly compatible with many of today's smaller camcorders and ideal for DSLR cameras. As such, the AR2 can also be inserted into the included hot shoe mount and attached to your camera for exceptional convenience and versatility.

When pro-level audio is a must in your camera application, Samson's AirLine Micro Camera Wireless System offers the most discreet and convenient wireless camera solution available.

### FEATURES

#### AirLine Micro Camera Wireless System

- Wireless system with micro-sized AL2 transmitter, AR2 receiver and double dock
- Tone squelch and auto mute for clear operation
- Includes a system carry case, hot shoe mount, 3.5mm and XLR camera connectors, AC adapter and charging cables

#### AL2 Transmitter

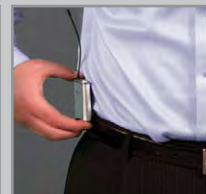
- Belt-pack transmitter and LM10 omnidirectional lavalier microphone
- Lithium-ion rechargeable battery (7-8 hours of operation)
- USB DC input for recharging
- Single button operation for power, mute and volume
- Multi-color LED displaying RF, low battery and power

#### AR2 Receiver

- Low-profile wireless receiver (2.36" x 1.67" x .51")
- Lithium-ion rechargeable battery (7-8 hours of operation)
- USB DC input for power and recharging
- 3.5mm unbalanced mic/line level output
- Multi-color LED displaying RF, low battery and power

#### AR2DT Double Dock

- Provides secure base for AL2 transmitter during recharging and AR2 receiver during operation and/or recharging
- USB DC input for power and recharging (cables included)
- 3.5mm unbalanced audio output



### AIRLINE MICRO CAMERA

UPC...Mutiple Channels, See Sales Rep

SKU .....	SWAM2SLM10
HEIGHT .....	5.25"
WIDTH .....	8.75"
DEPTH .....	2.75"
WEIGHT .....	1.35lb

MASTER CARTON QUANTITY: 24

\* DIMENSIONS AND WEIGHT BOXED

# SAMSON®

# AIRLINE 77

## UHF Wireless Systems



**AirLine 77 Headset System**

Samson sets a new standard in wireless performance with the Airline 77 UHF Wireless Systems. Featuring small format wireless transmitters, Airline 77 provides a true wireless experience free of belt packs and connector cables. With unique configurations available for handheld, guitar, headset (fitness) and wind instrument applications, Airline 77 takes the worry out of wireless.

The Airline 77 Headset is the line's flagship system, ideal for fitness instructors that teach yoga, indoor cycling and other high-energy exercise activities. It's also perfect for active presenters and singers who dance. Samson's lightweight Qe Headset Transmitter rests unobtrusively, yet securely, on the back of a double-ear headset, providing full-range movement with no risk of tangled cables or disconnected components. The Qe condenser microphone element features a sweat resistant design and a bidirectional pickup pattern that prevents disturbing feedback and other unwanted background noise.

The entire Airline 77 Series utilizes Samson's true diversity CR77 half-rack receiver. The CR77 features both audio level and RF signal LED metering, as well as a Squelch and Volume controls. The receiver's 300' operating range solidifies the Airline 77's high-quality performance.

### FEATURES

#### AIRLINE 77 WIRELESS SYSTEMS

- True diversity UHF wireless systems
- 1/4" audio cable and AC adapter included
- Available in handheld, guitar (Fender® and Gibson® style), headset and wind instrument configurations

#### CR77 WIRELESS RECEIVER

- Half-rack receiver design
- Dual tuned, molded antennas
- Multi-segment audio level and RF level LED meters
- Squelch and Volume controls
- Balanced XLR output
- Unbalanced 1/4" output with Mic/Line audio level switch

#### AX1 HANDHELD TRANSMITTER

- Plugs directly into any standard dynamic microphone (Samson Q7 mic included)
- Features power switch, power/battery LED and input level control
- Offers up to 14 hours of battery life using a single AAA battery
- 300' operating range

#### AF1 / AG1 GUITAR TRANSMITTERS

- Plug directly into guitar or bass output jacks
- **AF1:** 45° plug for most angled Fender®-style output jacks
- **AG1:** 90° plug for most straight Gibson®-style output jacks

- Features power switch and -15dB attenuation setting
- Offer up to 14 hours of battery life using a single AAA battery
- 300' operating range

#### QE HEADSET TRANSMITTER

- Built directly into the headband of a double-ear headset
- Qe condenser mic element with sweat resistant design and bidirectional pickup pattern
- Features power switch, power/battery LED and mute control
- Offer up to 14 hours of battery life using a single AAA battery
- 300' operating range

#### HM40 WIND INSTRUMENT TRANSMITTER

- Instrument clamp design allows for secure attachment of transmitter
- HM40 condenser horn mic element with cardioid pickup pattern
- Features power switch, power/battery LED and mute control
- Offer up to 14 hours of battery life using a single AAA battery
- 300' operating range



**AF1** Fender®-style input



**AG1** Gibson®-style input

#### AIRLINE 77 HANDHELD

UPC.....Multiple Channels, See Sales Rep
SKU ..... SW7AVSHX
HEIGHT ..... 10.5"
WIDTH ..... 11.25"
DEPTH ..... 3.75"
WEIGHT ..... 2.5lb

#### AIRLINE 77 GUITAR (FENDER®, GIBSON®)

UPC.....Multiple Channels, See Sales Rep
SKU.....SW7AVSGF, SW7AVSGG
HEIGHT ..... 10.5"
WIDTH ..... 11.25"
DEPTH ..... 3.75"
WEIGHT ..... 2.5lb

#### AIRLINE 77 HEADSET

UPC.....Multiple Channels, See Sales Rep
SKU ..... SW7AVSCG
HEIGHT ..... 10.5"
WIDTH ..... 11.25"
DEPTH ..... 3.75"
WEIGHT ..... 2.5lb

#### AIRLINE 77 WIND INSTRUMENT

UPC.....Multiple Channels, See Sales Rep
SKU ..... SW7AVSW4
HEIGHT ..... 10.5"
WIDTH ..... 11.25"
DEPTH ..... 3.75"
WEIGHT ..... 2.5lb

\* DIMENSIONS AND WEIGHTS BOXED

\*\* MASTER CARTON QUANTITY (ALL): 4

# SAMSON®

# AIRLINE 88 HEADSET

## UHF Wireless System



Samson's AirLine 88 Headset is the ultimate wireless solution for fitness instructors, active performers and energetic presenters. Featuring the water resistant AH8 Headset Transmitter, the AirLine 88 system offers complete wireless freedom with no need for beltpacks and attachment cables. AirLine 88 Headset takes the worry out of wireless.

The lightweight AH8 Headset Transmitter's active design fits comfortably and securely to provide a full range of movement, even in Yoga, Pilates and Zumba applications. The AH8 features a moisture resistant coating and a marine-grade stainless steel microphone boom to protect its components from perspiration. The stainless steel boom enables custom placement of the headset's custom AE50X micro-miniature microphone capsule, which features a unidirectional cardioid pickup pattern to prevent feedback and other unwanted noise. In addition, the AH8's rechargeable lithium ion battery provides up to eight hours of operation.

The frequency-agile AirLine 88 Headset provides a best-in-class 300' wireless range. The system's rack-mountable CR288 Wireless Receiver provides 16 channel options for interference-free performance. For fast setup, IR set technology wirelessly matches the operating channel of the transmitter to the receiver. The AirLine 88 Headset supports the simultaneous use of up to 16 systems (region dependent) to support larger facilities and multi-presenter situations.

## FEATURES

### AIRLINE 88 HEADSET SYSTEM

- High-performance professional UHF wireless system
- Rackmount kit included

### CR88 WIRELESS RECEIVER

- True diversity design minimizes dropouts
- Up to 16 systems can be operated simultaneously (region dependent)
- Tone key and auto mute functions eliminate background noise during dropouts
- Infrared set links the receiver and transmitter channels
- Balanced XLR and 1/4" outputs

### AH8 HEADSET TRANSMITTER

- Double ear headset transmitter (no beltpack or cable required)
- Moisture resistant coating design is perfect for high-energy classes
- Stainless steel microphone boom
- AE50X micro-miniature microphone element with unidirectional cardioid pickup pattern
- Onboard Level and Mute controls
- Rechargeable lithium ion battery offers up to eight hours of operation
- 300' operating range



Concert 88 Wireless Receiver



Transmitter built into headset



Stainless steel microphone boom

# SAMSON®

# AIRLINE 88 GUITAR

## UHF Wireless System



Samson's AirLine 88 Guitar is the ultimate wireless solution for guitarists, bassists and other stringed instrumentalists. Featuring the plug-in AG8 Guitar Transmitter, the AirLine 88 system offers complete wireless freedom with no need for belt packs and attachment cables. Airline 88 Guitar takes the worry out of wireless.

The AG8 Micro Guitar Transmitter plugs directly into your electric guitar, eliminating the need for a belt pack and cable. Its custom, multi-position connector design allows the AG8 to fit both Fender® and Gibson®-style guitar output jacks securely. In addition, the AG8 offers up to 12 hours of battery life using a single AA battery.

The frequency-agile AirLine 88 Guitar provides a best-in-class 300' wireless range. The system's rack-mountable CR88 Wireless Receiver provides 16 channel options for interference-free performance. For fast setup, IR set technology wirelessly matches the operating channel of the transmitter to the receiver. The Airline 88 Guitar supports the simultaneous use of up to 16 systems (region dependent) to support larger facilities and multiple guitarists.

## FEATURES

### AIRLINE 88 GUITAR SYSTEM

- High-performance professional UHF wireless system
- Rackmount kit included

### CR88 WIRELESS RECEIVER

- True diversity design minimizes dropouts
- Up to 16 systems can be operated simultaneously (region dependent)
- Tone key and auto mute functions eliminate background noise during dropouts
- Infrared set links the receiver and transmitter channels
- Balanced XLR and 1/4" outputs

### AG8 GUITAR TRANSMITTER

- Plugs directly into guitar output jack (no belt pack or cable required)
- Multi-position connector fits both Fender® and Gibson®-style guitar output jacks
- Onboard Gain and Mute controls
- Offers up to 12 hours of battery life using single AA battery
- 300' operating range



Concert 88 Wireless Receiver



AG8 Guitar Transmitter plugs directly into guitar output jack

# SAMSON®



# SAMSON ACCESSORIES



# BT30

## 30-Pin *Bluetooth*® Receiver



Samson's BT30 30-Pin *Bluetooth* Receiver transforms Apple 30-pin dock audio players, including select Samson Expedition Series Portable PAs, into *Bluetooth*-enabled receivers capable of streaming music wirelessly from smartphones, tablets and laptops. Ultra-convenient and easy-to-use, the BT30 lets you enjoy the latest in audio playback technology without sacrificing the useful accessories you've grown accustomed to for playing music, such as older iHomes, PA systems and more.

Utilizing *Bluetooth* 3.0 technology, the BT30 receiver provides your 30-pin audio device with a 30' range for wirelessly streaming music. You can now control your music from afar with minimal effort, whether it's to skip to your favorite track or pause the music when the outside world comes calling. The BT30 also grants you the freedom to choose your music source. No longer bound to a certain device size or manufacturer, the ubiquity of *Bluetooth* protocol enables you to stream music to a 30-pin audio dock from virtually any smartphone, tablet and laptop.

The BT30 offers easy setup in just three simple steps: Dock, Pair and Play. Dock; Plug the BT30 receiver into your 30-pin dock audio device. Pair; Activate the *Bluetooth* feature on your music source and tap the *Bluetooth* Pair button on your BT30. Play; Select the music you wish to hear on your music source and enjoy. The receiver will even save these settings to your music source for even quicker and easier pairing the next time around. In addition, the BT30 conveniently receives its power from your audio device dock with no extra adapters or charging needed.

Samson's BT30 30-Pin *Bluetooth* Receiver will breathe new, *Bluetooth*-capable life into your Apple 30-pin dock audio players.

### FEATURES

- Transforms Apple 30-pin dock audio players into *Bluetooth*-compatible receivers
- Perfect for use with select Samson Expedition Series Portable PAs (XP40i, XP40iw, XP308i, XP510i)
- Utilizes *Bluetooth* 3.0 technology
- Provides 30' range for wirelessly streaming music
- Easy setup via *Bluetooth* Pair button
- Saves settings to your music source for easy pairing
- Powered by audio device dock, no additional adapters or charging needed



Perfect for use with select Samson Expedition Series Portable PAs



### BT30

UPC .....	809164015895
SKU .....	SABT30
HEIGHT .....	4.25"
WIDTH .....	3"
DEPTH .....	0.75"
WEIGHT .....	0.06lb
MASTER CARTON QUANTITY: 80	

\* DIMENSIONS AND WEIGHT BOXED

# SAMSON®



# CT SERIES

## Clip-On Tuners



CT16



CT20



CT260H



CT260V

Samson's CT Series Clip-On Tuners combine precision tuning capabilities in four unique hands-free designs (CT16, CT20, CT260H, CT260V) that make accurately tuning guitars, basses, stringed, woodwind or brass instruments easier than ever.

### FEATURES

#### CT16

- Horizontal LCD display
- Integrated clip with 360° movement for easy viewing
- Chromatic, guitar, bass, violin, ukulele C and ukulele D tuning scales
- Piezo sensor calibrates via vibration
- Flat tuning/transposition
- Real-time response for tuning accuracy
- Pitch calibration ranges from A 410 to 450Hz
- Powered by a single CR2032 battery (included)

#### CT260H

- Horizontal LCD display
- Integrated clip with 360° movement for easy viewing
- Auto On/Off features
- Chromatic turning mode for guitars, basses and more
- Real-time response for tuning accuracy
- Powered by a single CR2032 battery (included)

#### CT20

- Large, horizontal full color LCD display
- Integrated clip with 360° movement for easy viewing
- Chromatic, guitar and bass tuning scales
- Built-in mic or clip-on setting for precise tuning
- Flat tuning/transposition
- Real-time response for tuning accuracy
- Pitch calibration ranges from A 410–490Hz
- Powered by a single CR2032 battery (included)
- Auto power-off and energy-saving functions for maximum battery life

#### CT260V

- Vertical LCD display
- Integrated clip with 360° movement for easy viewing
- Auto On/Off features
- Chromatic turning mode for guitars, basses and more
- Real-time response for tuning accuracy
- Powered by a single CR2032 battery (included)



#### CT16

UPC.....	809164015444
SKU.....	SACT16
HEIGHT.....	2.5"
WIDTH.....	1.75"
DEPTH.....	1.5"
WEIGHT.....	0.1lb
MASTER CARTON QUANTITY:	100

#### CT20

UPC.....	809164012757
SKU.....	SACT20
HEIGHT.....	5"
WIDTH.....	3.75"
DEPTH.....	2.75"
WEIGHT.....	0.5lb
MASTER CARTON QUANTITY:	40

#### CT260H

UPC.....	809164017905
SKU.....	SACT260H
HEIGHT.....	1.75"
WIDTH.....	2.25"
DEPTH.....	1.25"
WEIGHT.....	0.06lb
MASTER CARTON QUANTITY:	100

#### CT260V

UPC.....	809164017899
SKU.....	SACT260V
HEIGHT.....	1.75"
WIDTH.....	2.25"
DEPTH.....	1.25"
WEIGHT.....	0.06lb
MASTER CARTON QUANTITY:	100

\* DIMENSIONS AND WEIGHT BOXED

# SAMSON®

# CM40

## Chromatic Tuner / Metronome



Samson brings precision tuning and metronome capabilities together in our CM40 Chromatic Tuner/Metronome. Its compact, easy-to-use design makes tuning any stringed, woodwind or brass instrument, as well as metronome training, a breeze.

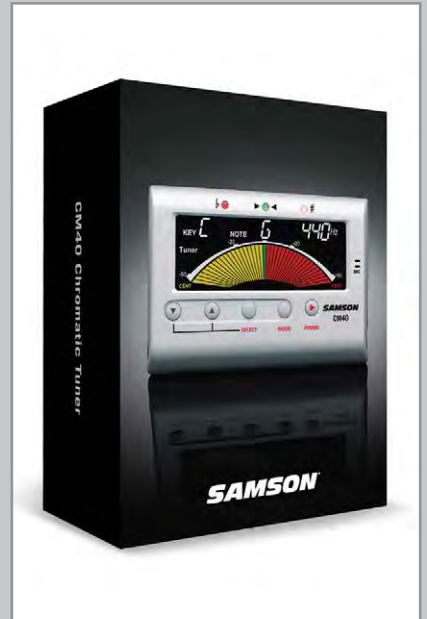
As a chromatic tuner, the CM40 offers a variety of impressive features, including two modes of tuning: Tone (manual) and Meter (automatic). When using Tone mode, the tuner automatically recognizes the note you're playing, while Meter mode allows you to select a reference pitch. Use its on-board microphone to adjust acoustic instruments and its 1/4" input connector for electronic instruments. Also, the CM40 puts a flat tuning/transposition setting at your fingertips. Ultimately, the CM40 always generates a smooth, real-time response with precise tuning accuracy that can be calibrated between A 430 and 450Hz.

The CM40 also functions as a metronome. Practice along with tempos ranging from 30 to 250 bpm using the tuner's built-in speaker with volume control, 1/4" output and 1/8" headphone jack. In Beat mode, you can choose from ten different time signatures. And by using the Rhythm function, each time signature contains nine rhythm variations for practicing a wide range of styles. You will master your timing, no matter the time signature or style of music your playing.

Designed with a large, full color LCD display, as well as LED pitch/beat indicators, the CM40 can be easily used in any environment, including a dark stage. It also features an integrated kickstand for better viewing. In addition, if not used for five minutes, a convenient auto power-off function conserves the CM40's two included AAA batteries that power the CM40 if it is not in use for 10 minutes.

### FEATURES

- Large, full color LCD display and LED indicators
- Tone (manual) and Meter (automatic) tuning modes
- Built-in mic
- Flat tuning/transposition
- Smooth, real-time response
- Precise tuning accuracy
- Pitch calibration (A 430–450Hz)
- Metronome ranges from 30–250 bpm
- 10 Beat settings, each with 9 Rhythm sub-settings
- Dynamic speaker with volume control and headphone output
- AAA batteries included



### CM40

UPC .....	809164012764
SKU .....	SACM40
HEIGHT .....	5"
WIDTH .....	3.75"
DEPTH .....	2.5"
WEIGHT .....	0.55lb
MASTER CARTON QUANTITY: 40	

\* DIMENSIONS AND WEIGHT BOXED

# **SAMSON**

# TOURtek

HIGH PERFORMANCE CABLES FOR MUSICIANS

Tourtek Cables are premium audio cables designed for musicians and sound engineers who require superior sound quality and demand flawless reliability. All Tourtek Cables feature genuine Neutrik® connectors and are backed by a lifetime warranty.



## MICROPHONE CABLES

Tourtek Microphone Cables feature two 25-gauge multi-strand inner conductors wrapped in a braided copper shield with 96% coverage, protected by a 7mm PVC outer jacket.

TM3 (3')	809164006954, SATM3
TM6 (6')	809164006961, SATM6
TM10 (10')	809164006978, SATM10
TM15 (15')	809164006985, SATM15
TM20 (20')	809164006947, SATM20
TM25 (25')	809164006992, SATM25
TM30 (30')	809164007005, SATM30
TM50 (50')	809164007012, SATM50
TM100 (100')	809164007029, SATM100



## INSTRUMENT CABLES

Tourtek Instrument Cable's inner-stranded copper conductor is covered by a PVC insulator, which is shielded with a second carbon insulator, then wrapped in a braided copper with 96% coverage, protected by a 6mm PVC outer jacket.

TI1 (1')	809164007036, SATI1
TI3 (3')	809164007050, SATI3
TI6 (6')	809164007074, SATI6
TI10 (10')	809164007081, SATI10
TI15 (15')	809164007098, SATI15
TI20 (20')	809164007104, SATI20
TI25 (25')	809164007111, SATI25
TI50 (50')	809164007128, SATI50
TIL3 (3' with one right angle connector)	809164007135, SATIL3
TIL10 (10' with one right angle connector)	809164007142, SATIL10
TIL20 (20' with one right angle connector)	809164007159, SATIL20
TIL25 (25' with one right angle connector)	809164007166, SATIL25



## SPEAKER CABLES

For serious power delivery, Tourtek Speaker Cables use genuine Neutrik® Speakon® and ¼" connectors, heavy-duty 14-gauge copper wire and solid build construction.

TSQ3 (3' with ¼" connectors)	809164007173, SATSQ3
TSQ10 (10' with ¼" connectors)	809164007180, SATSQ10
TSQ30 (30' with ¼" connectors)	809164007197, SATSQ30
TSS30 (30' with Speakon® connectors)	809164007203, SATSS30



## SAMSON MC18 3-PACK

18' Low Noise Microphone Cables

UPC ..... 809164003298

SKU ..... SAMC18



## SAMSON IC20 2-PACK

20' Instrument/Patch Cables

UPC ..... 809164004455

SKU ..... SAIC20

# SAMSON

# MICROPHONE ACCESSORIES



PS04

### PS04 Mic Pop Filter

- Dual layer 4.75" nylon mesh screen reduces vocal popping ("P-Pops") and sibilance
- Flexible 8" gooseneck for easily adjusting filter position
- Universal mic stand adapter

### PS01 Mic Pop Filter

- Dual layer 4.75" nylon mesh screen reduces vocal popping ("P-Pops") and sibilance
- Flexible 12" gooseneck for easily adjusting filter position
- Universal mic stand adapter



SP01

### SP01 Spider Shockmount

- Spider-style shockmount
- Provides enhanced isolation for most Samson condenser microphones
- Fits all standard microphone stands

### SP04 Spider Shockmount

- Provides enhanced isolation for Samson's G-Track USB Condenser Microphone
- Fits all standard microphone stands



MC1

### MC1 Mic Clip 3-Pack

- Three mic clips
- Heavy-duty, durable design
- Sturdy brass mounting threads

### DMC100 Drum Mic Clip 3-Pack

- Three drum mic clips
- Allow for easy clip-on mounting of microphones to most drum rims and percussion instruments
- Adjustable height and swivel



WS1

### WS1 Mic Windscreens 5-Pack

- Five foam windscreens
- Greatly reduce occurrences of popping and wind noise
- Fit most handheld microphones

### WS5E Mic Windscreens 5-Pack

- Five foam windscreens
- Greatly reduce occurrences of popping and wind noise
- Fit Samson's Qe and Qv headset microphones



### PS04

UPC ..... 809164015437

SKU ..... SAPS04

MASTER CARTON QUANTITY: 12

### PS01

UPC ..... 809164003328

SKU ..... SAPS01

MASTER CARTON QUANTITY: 12

### SP01

UPC ..... 809164002925

SKU ..... SASP01

MASTER CARTON QUANTITY: 10

### SP04

UPC ..... 809164008163

SKU ..... SASP04

MASTER CARTON QUANTITY: 10

### MC1

UPC ..... 809164004110

SKU ..... SAMC1

MASTER CARTON QUANTITY: 10

### DMC100

UPC ..... 809164003304

SKU ..... SADM100

MASTER CARTON QUANTITY: 12

### WS1

UPC ..... 809164003311

SKU ..... SAWS1

MASTER CARTON QUANTITY: 20

### WS5E

UPC ..... 809164006343

SKU ..... SAWS5E

MASTER CARTON QUANTITY: 24

**SAMSON®**

# MICROPHONE STANDS



## MK10 Professional Microphone Stand

- Lightweight boom stand with tripod base
- Ideal for live and studio settings
- Roadworthy steel construction
- Collapsible to 25" in height
- Mic clip included

## MK5 Boom Stand Kit

- Heavy-duty, collapsible tripod boom stand
- Includes 18' XLR mic cable, mic clip and windscreen

## MD5 Desktop Mic Stand

- 5" desktop mic stand
- Perfect for podcasts, voiceovers, recording music and any other desktop application
- Weighted metal base for total stability



## BL3 Ultra-Lightweight Boom Stand

- Collapsible tripod boom stand
- Die-cast and steel construction

## BL3VP Boom Stand & Cable 3-Pack

- Three BL3 Lightweight Boom Stands
- Three 18', gold-plated XLR mic cables
- Nylon carry case

## BT4 Telescoping Boom Stand

- Collapsible tripod boom stand
- Telescoping design
- Die-cast and steel construction

## MB1 Mini Boom Stand

- Miniature-sized collapsible boom stand
- Perfect for miking kick drums and speaker cabinets
- Die-cast and steel construction
- Includes mic clip

## SB100 Studio Boom Stand

- Professional-grade studio boom stand
- Counter-weighted telescopic design with over 6' horizontal, 12' vertical extension
- Heavy-duty steel construction



## MK10

UPC ..... 809164010166

SKU ..... SAMK10

MASTER CARTON QUANTITY: 6

## MK5

UPC ..... 809164003199

SKU ..... SAMK5

MASTER CARTON QUANTITY: 4

## MD5

UPC ..... 809164006664

SKU ..... SAMD5

MASTER CARTON QUANTITY: 12

## BL3

UPC ..... 809164003472

SKU ..... SABL3

MASTER CARTON QUANTITY: 4

## BL3VP

UPC ..... 809164004615

SKU ..... SABL3VP

MASTER CARTON QUANTITY: 2

## BT4

UPC ..... 809164003465

SKU ..... SABT4

MASTER CARTON QUANTITY: 4

## MB1

UPC ..... 809164003335

SKU ..... SAMB1

MASTER CARTON QUANTITY: 4

## SB100

UPC ..... 809164004141

SKU ..... SASB100

MASTER CARTON QUANTITY: 2

# SAMSON®

# SMS

## Mixer Stand Holders



SMS1000



SMS124M



All SMS holders mount to standard mic stands for custom placement of mixers (mic stand sold separately)

The SMS Series Mixer Stand Holders are ideal accessories for Samson's Expedition Series Portable PAs (SMS150, SMS308, SMS1000) and MixPad® MXP124 and MXP124FX mixers (SMS124M). These mixer stand holders provide exceptional convenience to performers and sound engineers everywhere, allowing for audio level adjustments to be made without interrupting ongoing performances.

The SMS150, SMS308 and SMS1000 Mixer Stand Holders are custom-designed to the corresponding mixers of Samson's Expedition XP150, XP308i and XP1000 (and XP510i) PA systems. Each model mounts to any standard microphone stand, allowing for custom placement of the mixer section of your PA. With a solid metal design, these holders are built to handle heavy and constant use.

The SMS124M Mixer Stand Holder is perfect for use with Samson's compact MixPad® MXP mixers, but can be used with a variety of mixing consoles. The adapter attaches to your mixer and mounts to almost any standard microphone stand. It's capable of both vertical adjustments and 360° rotation, enabling ideal placement for your mixer during performances and rehearsals. Also featuring solid metal construction, the SMS124M is built to withstand use night after night.

### FEATURES

#### SMS150 / SMS308 / SMS1000

- Custom-designed for Samson Expedition Portable PAs (XP150, XP308i, XP1000)
- Available in three models (SMS150, SMS308, SMS1000)
- Mount to standard microphone stands for custom placement of mixers
- Solid metal construction

#### SMS124M

- Ideal for use with Samson MixPad® MXP124 and MXP124FX mixers
- Mounts to standard microphone stands for custom placement of mixers
- Allows for vertical adjustments and 360° rotation
- Solid metal construction

#### SMS150

UPC .....	809164016748
SKU .....	SASMS150
HEIGHT .....	5.25"
WIDTH .....	8.25"
DEPTH .....	6"
WEIGHT .....	1.75lb

#### SMS308

UPC .....	809164016755
SKU .....	SASMS308
HEIGHT .....	5"
WIDTH .....	11"
DEPTH .....	6.75"
WEIGHT .....	2.65lb

#### SMS1000

UPC .....	809164016762
SKU .....	SASMS1000
HEIGHT .....	5.5"
WIDTH .....	12.75"
DEPTH .....	7.5"
WEIGHT .....	3.25lb

#### SMS124M

UPC .....	809164017233
SKU .....	SASMS124M
HEIGHT .....	3.75"
WIDTH .....	5"
DEPTH .....	2"
WEIGHT .....	0.65

\* DIMENSIONS AND WEIGHTS BOXED  
 \*\* MASTER CARRON QUANTITY (ALL): 6

# SAMSON®

# SMX100

## Mixer Stand



Compatible with Samson S4000 Powered Mixer

Samson's SMX100 Mixer Stand is the ideal accessory for Samson's S4000 Powered Mixer. Nevertheless, the SMX100 offers adjustable angle and width settings to accommodate a variety of mixing consoles. The stand can handle mixers that weigh up to 65lb and features a fold-up design with a quick release locking system for easy storage. And with solid steel construction, the SMX100 is built to withstand heavy and constant use. Samson's SMX100 Mixer Stand provides exceptional convenience to performers and sound engineers everywhere, allowing for audio level adjustments to be made without interrupting ongoing performances.

### FEATURES

- Ideal for use with Samson S4000 Powered Mixer
- Roadworthy steel construction
- Sleek black finish
- Adjustable angle and width settings for a variety of mixer sizes
- 65lb of handling capacity
- Fold-up design, quick release locking system for easy storage

### SMX100

UPC .....	809164016809
SKU .....	SASMX100
HEIGHT .....	36.75"
WIDTH .....	19"
DEPTH .....	4.25"
WEIGHT .....	14lb
MASTER CARTON QUANTITY: 4	

\* DIMENSIONS AND WEIGHT BOXED

# **SAMSON**

# LS / SP SERIES

## Speaker Stands



Locking latches for increased support

Samson's LS and SP Series Speaker Stands raise your music to where audiences can enjoy it to the fullest. Available as single stands (LS40, SP100) and pairs (LS50P, SP50P), these lightweight, telescoping tripod speaker stands feature roadworthy, steel (LS) and aluminum (SP)-constructed designs with sleek black finishes. With their standard 1 3/8" pole adapters, these stands fit virtually all PA speakers.

### FEATURES

#### LS40 Speaker Stand

- Lightweight, telescoping speaker stand with tripod base
- Ideal for use with Samson Expedition Rechargeable Portable PAs (Escape, Express, XP106, XP106w)
- Roadworthy, steel construction
- Sleek black finish
- Adjustable up to 4.75' in height
- Standard 1 3/8" pole adapter fits virtually any PA speaker
- 44lb (20kg) of handling capacity

#### SP50P Speaker Stand Set

- Two heavy duty, telescoping speaker stands, each with tripod base
- Lightweight, aluminum construction
- Sleek black finish
- Adjustable up to 5.25' in height
- Standard 1 3/8" pole adapters fit virtually all PA speakers
- 110lb (50kg) of handling capacity per stand
- Locking latches for increased support
- Includes canvas carry bag

#### LS50P Speaker Stand Set

- Two lightweight, telescoping speaker stands, each with tripod base
- Ideal for use with Samson Expedition Portable PAs (XP150, XP308i, XP1000)
- Roadworthy steel construction
- Sleek black finish
- Standard 1 3/8" pole adapters fit virtually all PA speakers
- Adjustable up to 5' in height
- 44 pounds (20kg) of handling capacity per stand

#### SP100 Speaker Stand

- Heavy duty, telescoping speaker stand with tripod base
- Lightweight, aluminum construction
- Sleek black finish
- Adjustable up to 6' in height
- Standard 1 3/8" pole adapter fits virtually any PA speaker
- 110lb (50kg) of handling capacity
- Locking latch for increased support

#### LS40

UPC .....	809164016397
SKU .....	SALS40
HEIGHT .....	31.5"
WIDTH .....	4"
DEPTH .....	3.75"
WEIGHT .....	6lb
MASTER CARTON QUANTITY: 6	

#### LS50P

UPC .....	809164016410
SKU .....	SALS50P
HEIGHT .....	36.25"
WIDTH .....	9.75"
DEPTH .....	5.75"
WEIGHT .....	14
MASTER CARTON QUANTITY: 4	

#### SP50P

UPC .....	809164016700
SKU .....	SASP50P
HEIGHT .....	36.75"
WIDTH .....	5.25"
DEPTH .....	5"
WEIGHT .....	12lb
MASTER CARTON QUANTITY: 2	

#### SP100

UPC .....	809164016717
SKU .....	SASP100
HEIGHT .....	41.25"
WIDTH .....	5.25"
DEPTH .....	5.25"
WEIGHT .....	4lb
MASTER CARTON QUANTITY: 4	

\* DIMENSIONS AND WEIGHTS BOXED

# SAMSON®



# MS100 / MS200

## Studio Monitor Stands



MS100 (sold as a pair)

Samson's MS Series Studio Monitor Stands raise your studio performance to a new level. Offering two professional-grade models (MS100 and MS200) both sold in pairs, Samson's studio monitor stands feature a steel-constructed design with a sleek black finish. Adjustable to 4' in height, the MS100 stands also feature adjustable brackets that extend their monitor surfaces width up to 10.25" to accommodate various monitor sizes with a maximum weight of 45 pounds each. Meanwhile, the MS200 stands feature heavy-duty metal bases with non-slip corner pads to reduce vibrations. Adjustable up to 4.8' in height with a locking pin for increased support, each MS200 stand can handle enclosures weighing up to 75 pounds.

### FEATURES

#### MS100

- Professional-grade studio monitor stands (sold as a pair)
- Steel construction with sleek black finish
- Adjustable brackets extend monitor surfaces width up to 10.25", accommodating various monitor sizes
- Adjustable up to 4' in height
- Triangular metal bases with carpet spikes
- 45lb of handling capacity per stand
- Rubber pads reduce vibrations

#### MS200

- Professional-grade studio monitor stands (sold as a pair)
- Steel construction with sleek black finish
- Adjustable up to 4.8' in height with locking pins
- Heavy-duty triangular metal bases (6" x 6.5") with carpet spikes
- 75lb of handling capacity per stand
- Non-slip corner pads reduce vibrations

### MS100

UPC .....	809164004127
SKU .....	SAMS100
HEIGHT .....	2.5"
WIDTH .....	15.5"
DEPTH .....	27.25"
WEIGHT .....	19.75lb
MASTER CARTON QUANTITY: 2	

### MS200

UPC .....	809164005827
SKU .....	SAMS200
HEIGHT .....	7.5"
WIDTH .....	8.5"
DEPTH .....	32.5"
WEIGHT .....	17.6lb
MASTER CARTON QUANTITY: 4	

\* DIMENSIONS AND WEIGHTS BOXED

# SAMSON®

# LTS50

## Laptop Stand



Samson's LTS50 Laptop Stand offers convenient, comfortable placement of your laptop computer in live and studio environments. The lightweight LTS50 offers a roadworthy, steel-constructed design with a sleek black finish, as well as a removable top and fold-up design for increased portability. The top part of the stand features a silicon surface to hold your laptop securely in place with tilt control for optimal positioning in any application. Adjustable up to 4.5' in height with locking latches and a pin lock for increased support, you can count on the LTS50 to keep your laptop right at your fingertips and ready to perform.

### FEATURES

- Heavy duty laptop stand with tripod base
- Silicon surface holds laptop securely in place
- Tilt control on laptop surface for optimal viewing
- Roadworthy steel construction
- Sleek black finish
- Adjustable up to 4.5' in height
- Locking latches, pin lock for increased support
- Removable top, fold-up design for increased portability

### LTS50

UPC .....	809164016724
SKU .....	SALTS50
HEIGHT .....	5"
WIDTH .....	24"
DEPTH .....	11 .75"
WEIGHT .....	10.25lb
MASTER CARTON QUANTITY: 2	

\* DIMENSIONS AND WEIGHT BOXED

# **SAMSON®**

# SRK SERIES

## Equipment Racks



Samson's rugged equipment racks are solid steel and feature fully enclosed steel side panels. They are available in four sizes: 8-space (SRK8), 12-space (SRK12), 16-space (SRK16) and 21-space (SRK21). The racks are set upon four heavy-duty, 3" (75 mm) casters with locking fronts. Each Samson equipment rack includes a single-space, flanged blank panel. The truly innovative thing is that the unique steel support bar construction allows the racks to be assembled to accept either the European or US thread sizes.

### FEATURES

- Heavy-duty equipment racks in several sizes
- Works for both US and EU rack screws
- 19" equipment racks
- Heavy-duty steel construction with fully enclosed sides
- 3" (75mm) locking casters
- Single-space blank panel included
- US and European rack screws included
- 8, 12, 16 and 21 rackspace models



### SRK8

UPC .....	809164004752
SKU .....	SASRK8
HEIGHT .....	6.25"
WIDTH .....	20.25"
DEPTH .....	18.75"
WEIGHT .....	32.4lb

### SRK12

UPC .....	809164004776
SKU .....	SASRK12
HEIGHT .....	6.25"
WIDTH .....	24.5"
DEPTH .....	20.5"
WEIGHT .....	36.4lb

### SRK16

UPC .....	809164004769
SKU .....	SASRK16
HEIGHT .....	6"
WIDTH .....	31.5"
DEPTH .....	20.75"
WEIGHT .....	46.3lb

### SRK21

UPC .....	809164004745
SKU .....	SASRK21
HEIGHT .....	6"
WIDTH .....	40"
DEPTH .....	20.5"
WEIGHT .....	54.2lb

\* DIMENSIONS AND WEIGHTS BOXED

\*\* MASTER CARRON QUANTITY (ALL): 1

# **SAMSON®**

**SAMSON**

SOUND DRIVEN.



**SAMSONTECH.COM**

SAMSON TECHNOLOGIES • 45 GILPIN AVE • HAUPPAUGE, NY 11788

©2015 Samson Technologies Corp. All Rights Reserved. Apple and iPad are registered trademarks of Apple Inc., registered in the U.S. and other countries. The Bluetooth® word mark and logos are registered trademarks owned by Bluetooth SIG, Inc. and any use of such marks by Samson Technologies is under license. The aptX® mark and the aptX logo are trademarks of CSR plc or one of its group companies and may be registered in one or more jurisdictions. The N Mark is a trademark or registered trademark of NFC Forum, Inc. in the United States and in other countries. Other trademarks and trade names are those of their respective owners.