

Kandy LIII Inegrated Amplifier

Inputs
Line Level (x5), Moving Magnet (x1), Tape (x1)

Input Impedance
47 k Ω

Input Sensitivity (115W)
Line 470mV

Outputs
Speaker L & R (x1), Preamplifier (x2), Tape (x1), Headphone (x1)

Output Power
>120 Watts, into 8 Ω both channels driven
>185 Watts, into 4 Ω both channels driven

Power Supply
500VA Ultra Low Noise Toroidal Transformer
4 Regulated Supply Rails

Damping Factor
>110 (8 Ω)

Frequency response
(-3dB), <3Hz - >100kHz

Gain
38dB Overall (Pre & Power)
7dB Preamplifier
31dB Power Amplifier

Harmonic Distortion
<0.006% 1kHz - 8 Ω

Signal to Noise Ratio
Line 100dBa (ref 470mV)

Power Source
100V - 120V 50Hz / 60Hz
220V - 240V 50Hz / 60Hz

Power Consumption
Standby <25W, Full Power 2-CH 8 Ω < 330 W, 4 Ω <550W

Dimension
432 x 380 x 90 (W x D x H) mm
432 x 380 x 105 (including feet)

Weight
14 Kg

Kandy LIII Stereo Amplifier

Inputs
Straight (x2)
Trimmed (x2)

Input Impedance
10 k Ω

Input Sensitivity (115W)
900mV

Outputs
Speaker L & R (x1)

Output Power
>120 Watts, into 8 Ω both channels driven
>185 Watts, into 4W both channels driven

Power Supply
500VA Ultra Low Noise Toroidal Transformer

Damping Factor
>110 (8 Ω)

Frequency response
(-3dB), <3Hz - >100kHz

Gain
Straight or trimmed input
31.6 dB Straight or untrimmed
-50 dB (Full Mute) Fully trimmed

Harmonic Distortion
<0.005% 1kHz - 8 Ω

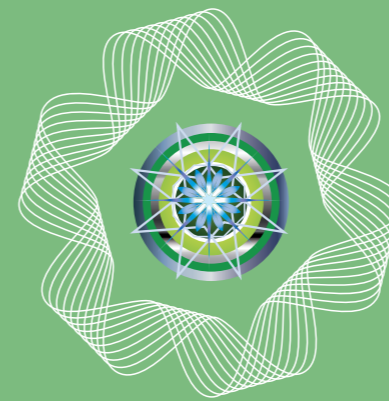
Signal to Noise Ratio
100dBa (ref. 900mV)

Power Source
100V - 120V 50Hz / 60Hz
220V - 240V 50Hz / 60Hz

Power Consumption
Standby <25W, Full Power <800W

Dimension
432 x 380 x 90 (W x D x H) mm
432 x 380 x 105 (including feet)

Weight
14 Kg



ROKSAN
discover the magic

KANDY
For everyone

Kandy LIII CD Player

Operating System
CD digital audio system (CD, CD-R, CD-RW)

Frequency Response
20Hz - 20kHz \pm 0.2dB

Harmonic Distortion
< 0.0025% @ 0dB, 1kHz
< 0.008% @ -30dB, 1kHz
< 0.015% @ 0dB, 20kHz
< 0.0015% @ 0dB

Intermodulation Distortion
S/N Ratio (IHF-A Wtd.)
Wow & Flutter
Channel Separation

Output Voltage
1.9Vrms

Digital Outputs
75 Ω Coaxial, RCA

D/A Conversion
Resolution/Sampling
Oscillation
Crystal
Jitter
Idle Pattern
Stop band Rejection
Power Supply

Power Source
110 Ω Balanced AES/EBU, XLR
Optical, Toslink
PCM1730E Advance Segment, Audio-Stereo DAC
24 bits / 192 kHz
3rd Overtone Oscillation
Super precision, custom made
<250 psec
<-110 dB
<-75 dB
High performance low noise toroidal transformer
7 fully regulated power rails

Power Consumption
100V - 120V 50Hz / 60Hz
220V - 240V 50Hz / 60Hz

Dimension
432 x 380 x 90 (W x D x H) mm
432 x 380 x 105 (including feet)

Weight
9Kg

Kandy LIII Tuner

Number of presets
99

Audio Output
(@ 75kHz Dev. Mono 1kHz)
Aerial Input

S/N Ratio (CCIR - ARM)

THD+N @ 1kHz 775mV
(400Hz HPF, 30kHz LPF)

Sensitivity (IHF)
Tuning Range

Frequency Response (FM)
Power Source

Power Consumption
Dimension

Weight

1.3 V
FM 75W Coaxial
AM Quick Connect Terminals
FM: Mono >75dB
Stereo >69dB
AM: >50dB

Mono, 75kHz Deviation <0.4%
Stereo, 75kHz Deviation <0.5%
11dB μ

FM: 87.5 - 108 MHz
AM: 522 - 1611 kHz
20Hz - 15kHz (-1dB)
220V - 240V 50Hz / 60Hz
100V - 120V 50Hz / 60Hz
<17 W
432 x 380 x 90 (W x D x H) mm
432 x 380 x 105 (including feet)
7Kg



KANDY
For everyone

www.roksan.co.uk
www.roksanaudio.de

Roksan's award winning system is a pleasure to own. This solidly built audiophile combination boasts charming aesthetics as well as simplicity of set up.

By taking advantage of the technology used in the Caspian and the Platinum series Kandy LIII system has surpassed the constraints generally faced by systems at this price point.

Desirably designed in elegant black and natural aluminium, the Kandy system is fully remote controlled with each component providing all the features required to make listening to music an entirely fuss-free experience.

Kandy LIII INTEGRATED Amplifier

The award winning Kandy LIII Integrated Amplifier is designed to set the benchmark for punch and clarity for amplifiers at this level. Kandy's solid construction encompasses a stylish looking aluminium fascia and steel casework. Features include five line inputs, one tape loop, a moving magnet phono stage, two pre outs, headphone socket and a pair of speaker terminals.

Internally, the Kandy's two identical mono power amp sections provide a powerhouse of 120w/channel of clean output that confidently defines the lower frequencies and captures the deep bass notes with vigour. This amplifier is particularly transparent ensuring delivery of subtle detail within a spacious three dimensional soundstage.

These exemplary features ensure a truly high-end performance of music reproduction.

> Features

- New Main amplifier, volume and display PCBs
- Symmetrical amplifier layout
- Optimised power supply layout, distribution and decoupling
- Better decoupling and power regulation to all stages
- Improved power supply for Preamplifier and phono section
- New Op-amps, optimized audio and power supply layout
- Directly powered power section from the main power supply
- Improved phono section Op-amp, layout and grounding
- Optimised routing and shorter speaker output cables
- Improved tape output section
- New improved protection circuit
- Improved wideband noise rejection
- Optimised internal cabling for improved performance
- Reduced residual hum and noise
- Redesigned chassis and cover with improved ventilation

Kandy LIII STEREO Amplifier

The Kandy LIII Stereo Amplifier sounds delicate yet powerful, dynamic yet musical and easy to listen to. The sound stage and musicians have the realistic 'sound' and 'air' about them that can be achieved only by the highest class of amplifier. Kandy stereo amplifier is based on the award winning LIII Integrated amp and sets the standard for affordable hi-end power amplifiers in its class.

> Features

- New Main amplifier PCB
- Symmetrical amplifier layout
- Optimised power supply layout, distribution and decoupling
- Better decoupling and power regulation to all stages
- Improved Straight Input section
- Improved Trimmed Input section
- Switch-able straight & trimmed inputs with full volume trim
- Directly powered power amp section from the main power supply
- Improved grounding
- Optimised routing and shorter speaker output cables
- Improved routing of signal cables
- New improved protection circuit
- Improved wideband noise rejection
- Elimination of several internal cables and connections for improved performance
- Reduced residual hum and noise
- Redesigned chassis and cover with improved ventilation



KANDY
For everyone

LIII Integrated Amplifier



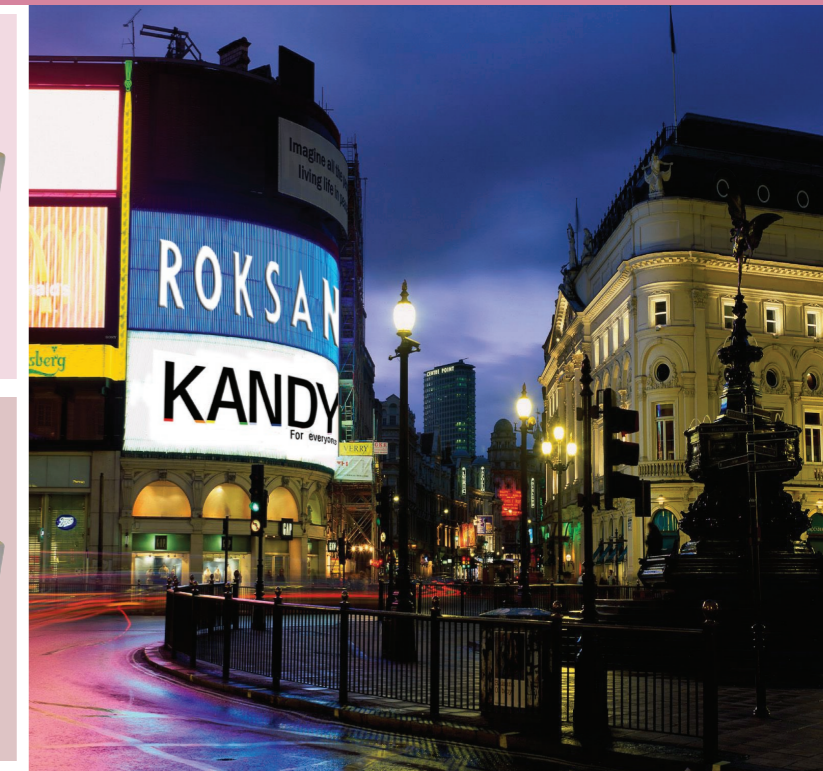
LIII Stereo Amplifier



LIII CD Player



LIII Tuner



Kandy LIII CD Player

Kandy LIII CD Player is an ideal source component that gives a gusty and impressive performance with excellent rhythmic control. The sheer weight of the dynamics provides plenty of attack, whilst the excellent ability to extract detail from the disc ensures each individual performer is easily distinguished. Vocal refinement combined with a realistic soundstage, uniquely create that centre seat experience.

> Features

- Front CD loading
- De-coupled mechanism
- Full functional remote commander
- Programme facility
- Repeat function
- Full functioning display, time elapsed, time remaining on track and time remaining on disc
- Gold plated RCA digital output
- Gold plated RCA analogue L & R output
- Super single bit enhanced digital to analogue conversion system
- 6 fully regulated power supply rails
- High frequency power supply capacitors throughout
- Super precision, ultra stable custom-made master clock crystal

Kandy LIII Tuner

Kandy LIII AM/FM Tuner is a concise and excellently built AM/FM TUNER that provides easy access to 99 preset channels for programming favourite radio stations. Manual tuning via the remote handset combined with the scan tuning facility ensure excellent reception of almost any radio station. The controlled and cohesive sound of this tuner complements the full Kandy system.

> Features

- 99 programmable presets
- Auto scan and manual tuning
- Optimised FM / AM tuning circuit
- Direct numeric station frequency input
- Mute function
- Stereo / Mono function

