

# REMINGTON®

## MICROSCREEN™ 100



### *Use and Care Guide*

MS2-150

## IMPORTANT SAFETY INSTRUCTIONS

When using an electrical appliance, basic precautions should always be observed, including the following. Read all instructions before using this appliance.

### DANGER

To reduce the risk of electric shock:

- Do not reach for an appliance that has fallen into water. Unplug it immediately.
- Do not place or store this appliance where it can fall or be pulled into a tub or sink while it is plugged in.
- Except when charging, always unplug this appliance from the electrical outlet immediately after using.
- Unplug this appliance before cleaning it.
- Do not use an extension cord or a voltage converter with this appliance.
- Do not use while bathing or in a shower.

### WARNING

To reduce the risk of burns, fire, electric shock or injury to persons:

- This appliance is for household use only.
- An appliance should never be left unattended when it's plugged in, except when charging a rechargeable appliance.
- Close supervision is necessary when this appliance is used by, on, or near children or invalids.
- Use this appliance only for its intended use as is described in this manual. Do not use attachments not recommended by manufacturer.
- Keep the cord away from heated surfaces.
- Never operate this appliance if it has a damaged cord or plug, if it is not working properly, if it has been dropped or damaged, or if it has been dropped into water. If any of these things happen, return the appliance to an authorized service center for examination and repair.

- Never drop or insert any object into any of the appliance's openings.
- Do not use outdoors or operate where aerosol (spray) products are being used, or where oxygen is being administered.
- Always store this appliance and cord in a moisture-free area. Do not store it in temperatures exceeding 140°F (60°C).
- Do not plug or unplug this appliance when your hands are wet.
- Do not wrap the cord around the appliance.
- Always attach the plug to the appliance, then to the outlet. To disconnect, turn all controls to OFF, then remove plug from outlet. Detach removable power cords from appliances for storage.
- Do not use this appliance with a damaged or broken screen or cutters, as injury may occur.

## SAVE THESE INSTRUCTIONS

### Contents

English .....	1
Spanish .....	13
French .....	25

## Product Features

### MICROSCREEN™ 100

Congratulations on your purchase of a premium Remington® shaver. The MicroScreen™ 100 has Revolutionary Shaving Technology.



### Which model is yours?

	Power system	Run time	Quick charge	Washable under water	Indicator lights		Worldwide voltage	Titanium coated trimmer blade
					Charging	Low-charge		
MS2-150	Rechargeable	60 min			1		x	

### Power System

■ **Rechargeable** shavers can only be used without the cord.

### Indicator Lights

#### Charging

The charging indicator is a green light that glows when the shaver is charging or fully charged.

### Worldwide Voltage

Your shaver can be used almost anywhere in the world, because it has automatic dual voltage conversion, providing AC current between 105-130 Vac, 60 Hz and 105-240 Vac, 50 Hz. Just plug it in to the local outlet (you may need an adapter plug) and use it as usual.

## How to Use

### Charging

Before using your shaver for the first time, put it on charge for 24 hours.

NOTE: It may take up to 3 cycles for the battery to reach full capacity.

#### To charge your shaver:

- Slide the power button downward to the OFF position.
- Connect the supplied AC power cord to the shaver's recharge port and then to an electrical outlet.
- Your shaver cannot be overcharged, so you can leave it plugged in and charging between shaves.
- To preserve the life of the batteries, allow them to fully discharge every six months, then recharge them for 24 hours.

### Removing the Headguard

Before operating your shaver, remove the headguard, which protects the screen and cutter assembly. It is important to remove the headguard correctly to avoid damaging the clips that hold it to the shaver.



1. Press lightly on the top of the headguard.
2. Lift the lower rear edge.
3. Pull the headguard away from the shaver.

! Always keep the protective head guard on the shaver head and keep the trimmer in the OFF position when the shaver is not in use.

### Operating the Trimmer

Your shaver is equipped with a 3-position trimmer.

1. Completely retracted (down), the trimmer is out of the way and off, for when you want to use the screens alone. Press the trimmer button down with your thumb to get it into this position.



2. In the middle position, the trimmer works with the screens, so the screens can get in extra close, cutting the longer, hard-to-shave hairs. Push the LEFT side of trimmer button for this position.



### How it works

Trimmer blades work in concert with the shaver's dual-screen system, cutting the longer, difficult-to-shave hairs. The trimmer blades take the brunt of the shaver wear and tear, so you get a close comfortable shave, time after time.

### Adjusting to your new shaver

As with every shaver, your shave will improve over time. So allow about three weeks to develop an effective shaving style and for your beard to adjust to the new shaver. The adaptation period may take a little longer if your skin is sensitive, or if you alternate between shaving methods.

To help smooth the transition to your new shaver, Remington has applied a special lubricant to the shaver's screens and cutters. The lubricant looks like fine, white or gray powder, and disappears with use.

### Before you begin:

- Wait at least 15 minutes after getting up before shaving, to ensure the face is free of puffiness that may be present from sleeping.
- Make sure your face is clean and dry before starting.



- Always use a clean, dry shaver.



### To shave

Push the ON/OFF button. Hold the shaver so both foils touch your face at the same time. This allows the shaver to work the way it was designed for the closest shave and minimum wear.

Avoid holding the shaver at an angle so only one screen touches the skin at a time. This will distort the screen and could cause skin irritation.

Shave with short, circular strokes. Use your free hand to stretch your skin. This encourages your whiskers to stand out, making it easier for them to enter the cutting chamber.

Never press hard. Pressing only flattens your whiskers, making it harder for them to enter the cutting chamber. It will also wear out the cutting surface more quickly.

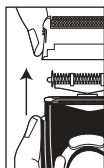


## Cleaning & Maintenance

### Cleaning Your Shaver

Remington® recommends cleaning your shaver after every use for optimal performance.

1. Turn shaver OFF.
2. Press side release button to flip open head assembly.
3. **Screens**-Do not use the brush to clean the screens. Instead, blow the shavings out or rinse the screens under cold or warm water.
4. **Cutters and trimmer**-Use the cleaning brush to sweep any loose hairs from the cutters and trimmers.
5. After cleaning, return the foils and head assembly to their original position on the shaver.
6. To clean the external surfaces of the shaver, use a damp cloth. Do NOT use strong detergents or other chemicals.
7. To dry, wipe the surface of the overall shaver with a dry towel. Do NOT use a hairdryer or heater to dry the shaver.



### Screens and Cutters

To assure smooth, efficient performance, it is important to clean your shaver.

#### Daily

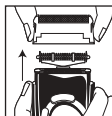
Blow out the stubble after each shave.

1. Turn the shaver off.
2. Remove the head assembly by squeezing on both release buttons and pulling up from the body of the shaver.
3. Thoroughly blow out the stubble from the screen and cutters.
4. Replace head assembly.

#### Weekly

Brush out the cutters and trimmer at least once a week.

1. Turn the shaver off.
2. Remove the head assembly by squeezing on both release buttons and pulling up from the body of the shaver.
3. Use the cleaning brush to sweep out the cutters and trimmer. **DO NOT USE THE CLEANING BRUSH ON THE SCREENS.** Damage may occur to the holes in the screens.
4. Replace head assembly. Remington® Shaver Saver® Lubricant (SP-4) lubricates and cleans your shaver's cutters and head assembly. The lubricant helps remove hair clippings while reducing wear. A quick spray after each shave keeps your shaver operating at peak performance.



#### Cleaning Cautions

- The construction of this shaver is for dry operation only. It is not waterproof. Never put the shaver in part or completely into water.
- Do not use an aggressive cleansing agent as this may destroy the shaver coatings.
- Do not remove or replace the head assembly while shaver is running as it may cause damage to the unit's screens or cutters.
- Replace worn or damaged parts with Remington® replacement parts only.

### Trimmer Care

#### Cleaning

1. Turn the shaver off.
2. Extend the trimmer to its maximum height by pressing the right trimmer button.
3. Use the cleaning brush to sweep off any clippings that may have accumulated around the trimmer assembly. Using the supplied brush will enable you to get into the area between the trimmer and the shaver.

### Lubricating

1. Every six months apply a drop of light machine oil one-third and two-thirds of the way along the blade.
2. Using your fingertip, spread the oil along the teeth.
3. Run the trimmer for a few seconds to distribute oil.

### Replacing Cutters and Screens

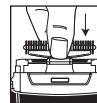
To prevent inadvertent damage to the cutters and screens, do not attempt to remove them from the head assembly unless you are replacing them. Removal instructions are included with the cutter and screen replacement packages.

#### To replace a cutter assembly that is removed unintentionally:

1. Hold the assembly in the middle of the "T".
2. Gently slide the plastic portion of the cutter assembly over the top of the oscillator tip.
3. Do not push downward on the ends of the cutters, as you may bend the cutter, reducing its ability to operate smoothly.
4. Do not remove cutters from the plastic pieces they are attached to, as you may damage the assembly.

#### When is it time to replace your screens and cutters?

Because they are subject to daily use, the cutters and screens of your shaver will wear and eventually require replacement to maintain a close, comfortable shave. It is very important to replace your screens and cutters when necessary to ensure a close, comfortable shave without irritation.



Depending on your shaving technique and habits, the screens will usually last 6 months; the cutters, 12 months. If you are replacing the cutters, it's a good idea to replace the screens at the same time.

Here are some signs that your foils and cutters need replacing:

**Irritation:** As screens get worn, you may notice that your skin feels more sensitive after a shave, particularly when you apply aftershave.

**Pulling:** As cutters wear, your shave may not feel as close and you may feel your shaver is pulling at your whiskers.

**Wear-through:** You may notice that the cutters have worn through the screens.

The replacement for this shaver is model SP-67 (screens) and SP-69 (screens and cutters).

U.S. residents:

To order shaver accessories call 800-736-4648, visit [www.remington-products.com](http://www.remington-products.com), or visit your local retailer.  
Canadian residents:

To order shaver accessories, please call 800-268-0425, visit [www.remington-products.com](http://www.remington-products.com) or visit your local retailer.

## Disposal

### Battery Removal

When your rechargeable shaver reaches the end of its useful life, the batteries must be removed from the shaver and be recycled or disposed of properly in accordance with your state and local requirements. If this is not required by law, you may elect to dispose of the shaver without removing the batteries.

**CAUTION: DO NOT PUT IN FIRE OR MUTILATE YOUR BATTERIES WHEN DISPOSING AS THEY MAY BURST OR RELEASE TOXIC MATERIALS. DO NOT SHORT CIRCUIT AS IT MAY CAUSE BURNS. DISPOSE PROPERLY IN ACCORDANCE WITH YOUR LOCAL AND STATE REQUIREMENTS.**

! To avoid a possible electric shock hazard, unplug cord (if used) from electric outlet and shaver.

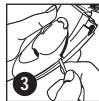
1. Remove head assembly by first pressing the two side buttons.



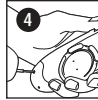
2. Un-clip the top metal bracket by prying the lower back edge over the snap. Lift the lip of the rubber boot off the housing.



3. Pry off the front panel.



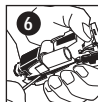
4. Remove the two screws securing the cord opening.



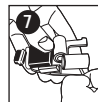
5. Squeeze the front housing and pull the back off to expose the PC board and batteries.



6. Pry the PC board assembly out of the shaver housing.



7. Cut or break the wire straps on both ends of the batteries, pry the batteries from the foam adhesive tape on the PCB.



Only follow these instructions when you are ready to dispose your shaver, as your shaver will no longer be operable.

## Performance Guarantee

### Full Two-Year Warranty

Spectrum Brands, Inc. warrants this product against any defects that are due to faulty material or workmanship for a two-year period from the original date of consumer purchase. This warranty does not include damage to the product resulting from accident or misuse.

If the product should become defective within the warranty period, we will repair it or elect to replace it free of charge. Return your product and sales receipt with your name, address and day time phone number to: Spectrum Brands, Inc., Attention: Consumer Services, 601 Rayovac Drive, Madison, WI 53711. For more information call 800-736-4648 in the US or 800-268-0425 in Canada.

Warranty excludes:

- Screens and cutters

#### KEEP ORIGINAL SALES RECEIPT AS PROOF OF PURCHASE FOR WARRANTY PURPOSES.

This warranty does not cover products damaged by the following:

- Accident, misuse, abuse or alteration of the product
- Servicing by unauthorized persons
- Use with unauthorized accessories
- Connecting it to incorrect current and voltage
- Wrapping cord around appliance causing premature wear & breakage
- Any other conditions beyond our control

**SPECTRUM BRANDS, INC. SHALL NOT BE RESPONSIBLE FOR ANY INCIDENTAL, SPECIAL OR CONSEQUENTIAL DAMAGES RESULTING FROM THE USE OF THIS PRODUCT. ALL IMPLIED WARRANTIES, INCLUDING BUT NOT LIMITED TO IMPLIED WARRANTIES OF FITNESS AND MERCHANTABILITY, ARE**

#### LIMITED IN DURATION TO TWO YEARS FROM DATE OF ORIGINAL PURCHASE.

This warranty gives you specific legal rights and you may also have other rights which vary from state to state or province to province. Some states do not allow the exclusion or limitation of incidental, special or consequential damages.

### Spectrum Brands, Inc. Money-back Offer

If within 30 days after you have purchased your Remington™ branded product, you are not satisfied and would like a refund, return it with the sales slip indicating purchase price and date of purchase to the retailer from whom it was purchased. Spectrum Brands, Inc. will reimburse all retailers who accept the product within 30 days from the date of purchase. If you have any questions concerning the money-back guarantee, please call 800-736-4648 in the US or 800-268-0425 in Canada.

105-130 Vac, 60 Hz  
105-240 Vac, 50 Hz.

#### Questions or comments:

Call 800-736-4648 in the US or 800-268-0425 in Canada. or visit [www.remington-products.com](http://www.remington-products.com)

Dist. by: Spectrum Brands, Inc.,  
Madison, WI 53711  
Dist. by: Rayovac Canada Inc.,  
Mississauga, ON L4W 2T7

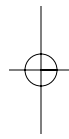
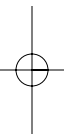
REMINGTON, MICROSCREEN and SHAVER SAVER are trademarks of ROVICAL, INC.

©2005 ROVICAL, INC.  
07/05 Job# CS27714

T22-17350

MADE IN CHINA





**REMINGTON®**

