



Operating Manual

DocuPen RC810/850



PLANON SYSTEM SOLUTIONS INC.

Legal and Other Notices

All contents of this publication are subject to change without notice.

No part of this publication may be reproduced or transmitted in any form Or by any means, electronic or mechanical, for any purpose, without the express prior written permission of Planon Systems Solutions Inc.

Planon Systems Solutions Inc. makes no representations or warranties regarding any damages, or benefit expected by using this unit lawfully, or any request from a third person, which are caused by the inappropriate use of this unit.

IN NO EVENT SHALL SELLER BE LIABLE FOR ANY DIRECT, INCIDENTAL OR CONSEQUENTIAL DAMAGES OF ANY NATURE, OR LOSSES OR EXPENSES RESULTING FROM ANY DEFECTIVE PRODUCT OR THE USE OF THIS PRODUCT.

Trademarks

Docuport DocuPen™ is a registered trademark of Docuport Incorporated.
 PaperPort Copy rights OCR technology by Nuance® Inc. All rights reserved.
 Copyright Outside In® Viewer Technology © Inso Corporation All rights reserved
 Copyright © 2004 Planon System Solutions Inc. All rights reserved.
 Abbyy™ is a registered Trademark of Abbyy

All other product or company names are trademarks or registered trademarks of their respective holders.

Regulatory Information

This device complies with Part 15 of the FCC Rules. Operation is subject to the following two conditions: (1) this device may not cause harmful interference, and (2) this device must accept any interference received, including interference that may cause undesired operation.

Canada ICES 003, Issue 3
 This Class B digital apparatus complies with Canadian ICES-003.

Planon System Solutions Inc.
 5155 Spectrum Way, Unit 15
 Mississauga, Ontario. L4W 5A1
 Phone: (905) 507-3926 Fax (905) 624-6629
 Email: planon@planon.com website: www.planon.com
 Help Line: 1-877-DOCUPEN (362-8736)

Contents

INTRODUCTION..... 1

Check the Contents..... 1

DocuPen RC850/810 Features 2

Power On/Rez Button..... 2

Color Mode Button..... 2

Driver and Software Installation..... 3

Software Installation..... 3

Installing the PenTwain driver..... 4

Installing the Docupen Application driver..... 5

Installing the USB driver..... 6

Installing PaperPort..... 12

Downloading the scanned images to Paperport..... 14

Installing Abbyy Finereader Sprint Software..... 17

Erasing DocuPen’s Memory..... 19

Scan Settings..... 20

LED Indicators..... 21

Scan Mode - Profile Configurator 22

CALIBRATION..... 24

Color calibration..... 25

Roller calibration..... 26

Points to Remember Before You Scan..... 28

On-board memory and External memory card..... 29

Warranty..... 30

APPENDIX..... 31

A. DocuPen RC850/810 Specifications..... 31

B. Proper Handling and Safe Use..... 32

C. Technical Support..... 32

Introduction

Thank you for purchasing our DocuPen RC 810 or 850* portable scanner.

The DocuPen functions as a quick and simple tool that can be taken anywhere to swipe over a smooth flat surface to capture black&white as well as color images.

We recommend that you fully charge your DocuPen before the first use. You can charge the DocuPen by simply plugging it into any USB port. It takes about 50 minutes to fully charge the DocuPen.

This manual provides instructions for scanning documents with the DocuPen and downloading the scanned images to your PC.

Please read these instructions carefully to obtain optimum performance and longer service life from the unit. Retain this manual for future reference.

In case you have any questions, need further information or experience any kind of difficulties during installation or operation don't hesitate to contact our Customer Support at:

support@planon.com
1-877-DOCUPEN or 1-905-507-3926
For International callers: 1 888 507 3926

Check the Contents:

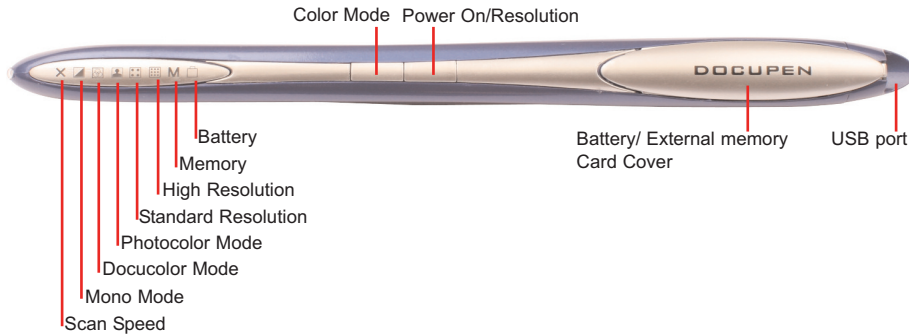
The following components are included in your DocuPen product package:

1. The DocuPen unit
2. USB cable for communication with PC (Mac) & recharging the DocuPen.
3. Installation CD containing DocuPen PenTwain and USB driver, DocuPen stand-alone application, PaperPort Software
4. Abbyy Sprint FineReader (Included exclusively with the DocuPen RC850)
4. Quick Start Guide
5. Leather Case (Executive Leather Case**)

* Please note that the DocuPen 810 and DocuPen 850 have identical hardware properties, hence further on we will refer to both models as the DocuPen.

**Executive Leather Case only included with RC850

DocuPen Features



The DocuPen Scanner has **two control** buttons on top. On the left-hand side of the DocuPen you can see eight LEDs indicating the scan settings and on the right you see the **Battery and External memory card cover** and the **USB port**. By pressing the control buttons you will be able to select the desired color mode and scan resolution. The LEDs on the left-hand side of the scanner will indicate the mode that you have selected.

Power On/Rez (Resolution) Button

Press the **Power On/Rez** button once to turn the DocuPen on. The DocuPen will turn itself on in default or last used configuration. The corresponding LEDs will be on. For details on the various configurations please go to section **Scan Settings - LEDs Indicators**.

Press the **Power ON/Rez** button again to select between Standard Resolution and Hi Resolution (Hi Rez) setting. There are two Standard Rez and two Hi Rez settings which can be set via the **Pen Configurator Dialog** explained in Section **Scan Settings**. The Resolution LEDs will turn on/off accordingly.

After the scan is completed the DocuPen will save the data into memory and turn itself off automatically. You can also turn the DocuPen off manually by pressing and holding the **Power ON/Rez** button for 5 seconds.

Color Mode Button

Press the **Color Mode** button to select desired Color mode. There are 3 color modes available: Monocolor, Docucolor* and Photocolor. The Color Mode LEDs will turn on/off accordingly. When the desired **Color mode** and **Rez setting** are selected, you can start gliding the DocuPen over your document.

Note: YOU MUST INSTALL THE DRIVERS BEFORE STARTING TO WORK WITH THE DOCUPEN!

*Docucolor is the term referring to standard color

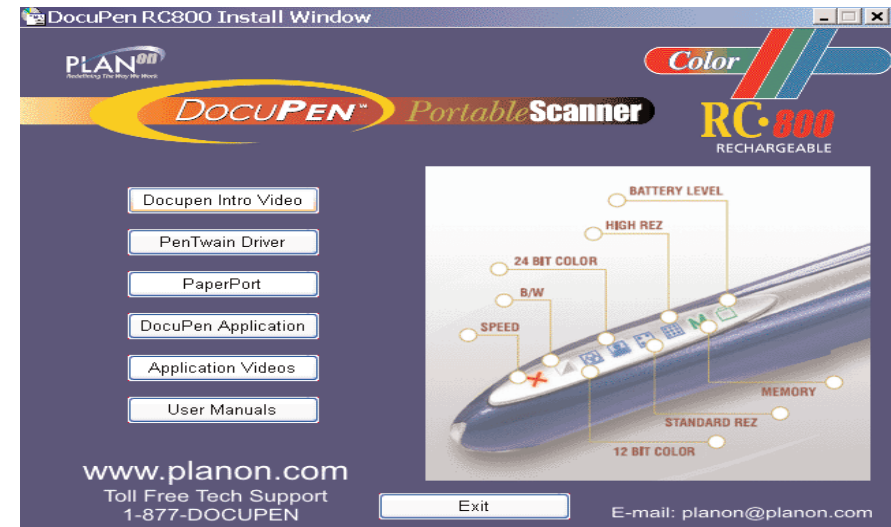
Driver and Software Installation

DocuPen Driver Platform Requirements: Before you install the DocuPen PenTwain driver, make sure that your computer meets the following minimum system requirements:

Microsoft Windows 2000/NT/ME/XP/Vista
CD-ROM for driver installation

Before connecting the DocuPen you **must** install the necessary drivers. Insert the DocuPen Installation CD in your CD-drive and follow the on-screen instructions.

After installation, the DocuPen driver is made available to all Windows Twain-compatible applications, such as PaperPort, Windows Imaging, etc.



Upon insertion of the CD the **DocuPen Installer control window** will appear. (See above)

By clicking on the corresponding button you will install the **PenTwain driver**, the **USB driver**, the **DocuPen Application** (recommended) and the **PaperPort** software. The **DocuPen Application** will allow you to download and view the images from your DocuPen without using any additional graphics software.

ScanSoft's PaperPort is one of the leading Document Management Software packages and works seamlessly with our DocuPen. Although you can use any Twain compatible graphics software we recommend PaperPort due to its document editing capabilities

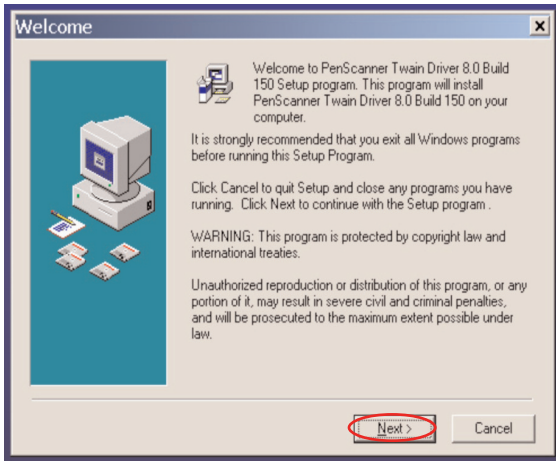
Software Installation (Continued)

Note: You must be logged on your PC as **Administrator**

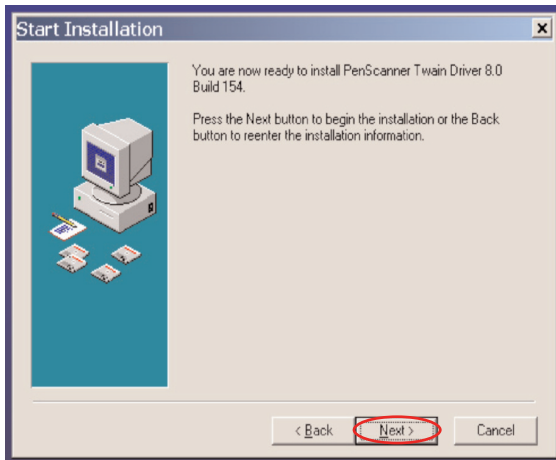
Note: The DocuPen USB cable **must be DISCONNECTED** during installation of the Pentwain driver

We recommend that you close all Windows programs and disable all virus protection software temporarily during the Pentwain driver & PaperPort installation

1. Insert the DocuPen CD-ROM into your CD drive
2. DocuPen Install window will appear in a few moments
3. In the **DocuPen Install window** please click on the button **PenTwain Driver**



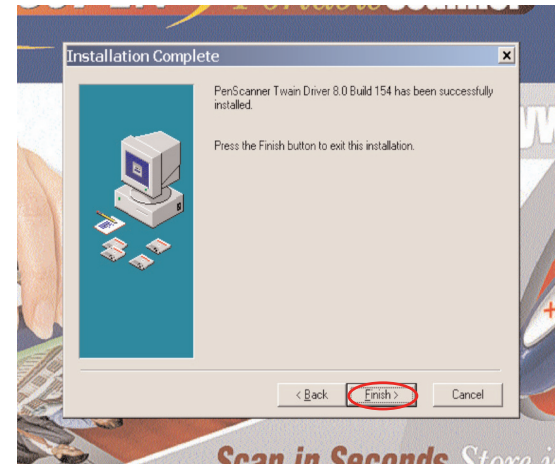
4. In the Welcome window, click the **Next** button



5. In the Start Installation window, click the **Next** button to begin installation

Software Installation (Continued)

6. The PenTWAIN driver will start installing. You will be prompted to click the **Finish** button to complete the Pen Twain installation.

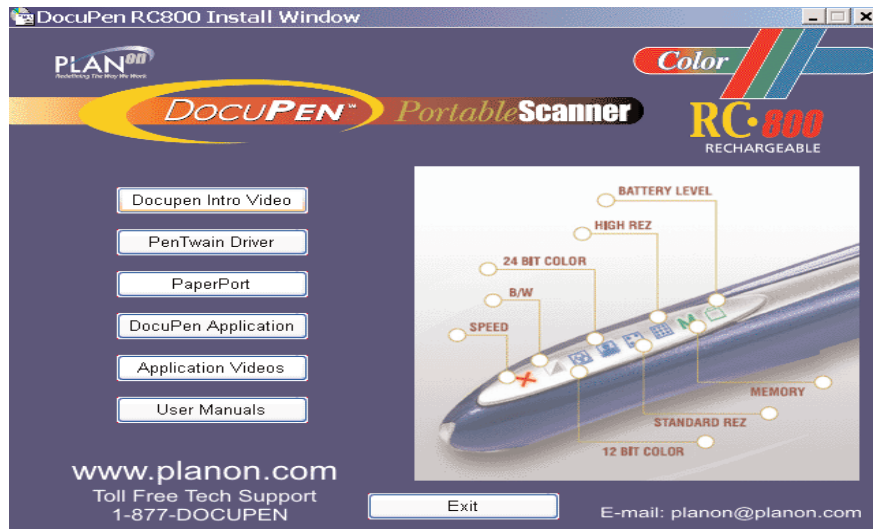


The installation of the Docupen Application (Start by selecting **DocuPen Application** button in the **DocuPen Install window** and follow the on-screen instructions) is identical, hence not explained here.

Now you have installed the **PenTwain driver** and the **DocuPen application**. You are almost done! As a next step we recommend installing the ScanSoft's PaperPort software package.

Installing the USB driver

In the DocuPen Install window please click on the button **USB Driver**

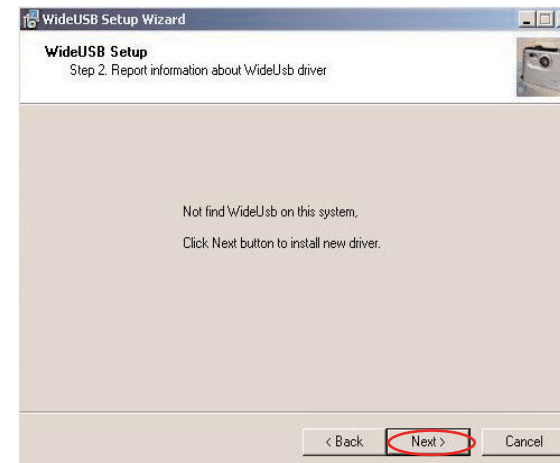


1. In the Welcome window, click the **Next** button

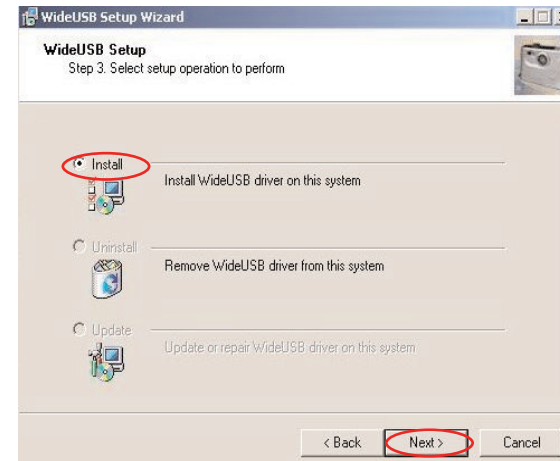


Installing the USB driver (Continued)

2. In the Start Installation window, click the **Next** button to begin installation

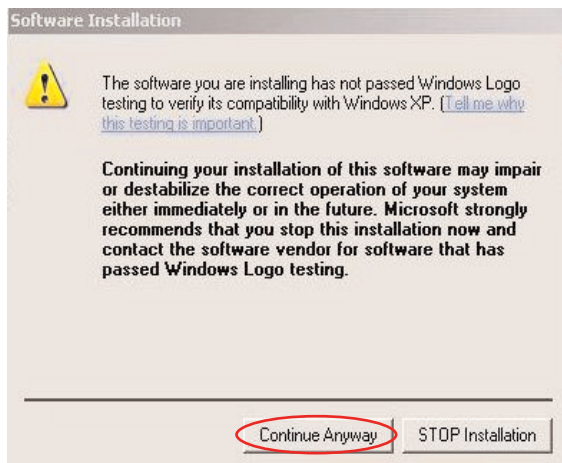


3. In the Set Up window, select **Install** and click the **Next** button to begin installation

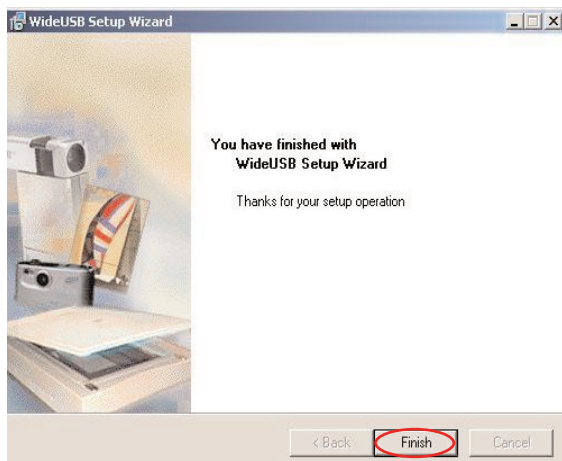


Installing the USB driver (Continued)

4. In some Windows OS you might see the window below. Please click on the **Continue Anyway** button



5. Click **Finish** button to complete the installation process.

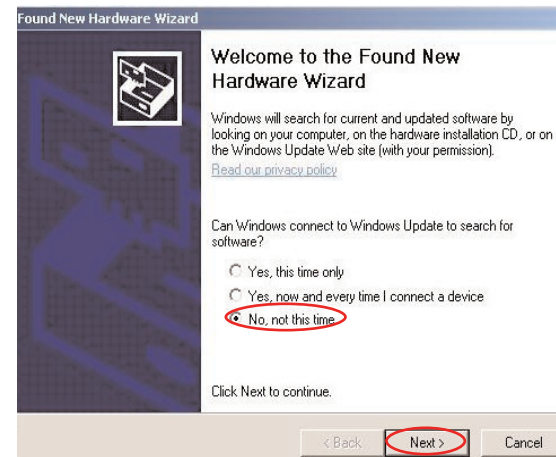


Connect the DocuPen to your computer and press the **Power ON/Rez** button to turn it on. You might briefly see a pop-up message from the **Windows Found New Hardware Wizard**.

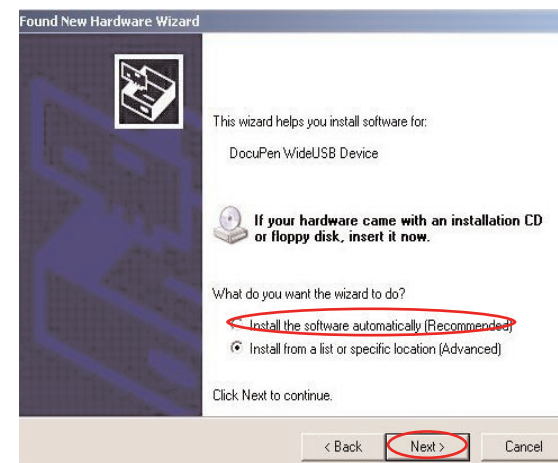


Installing the USB driver (Continued)

Windows should **self install** the USB driver from the Installation CD. Please follow the on-screen instructions of the **Found New Hardware Wizard**



In the initial **Found New Hardware Wizard** window select **No, not this time** and click the **Next** button

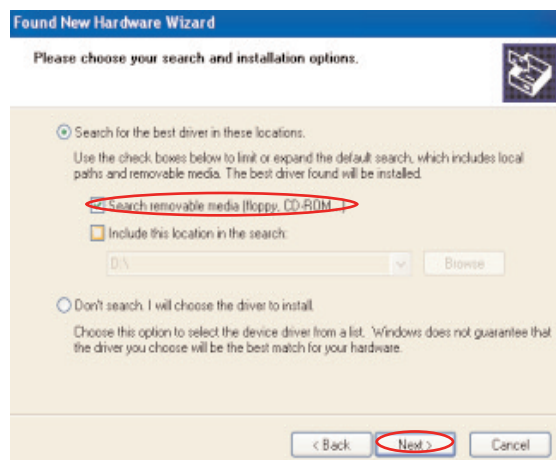


In the following **Found New Hardware Wizard** window select **Install the software automatically** and click the **Next** button. The USB driver installation will be finalized.

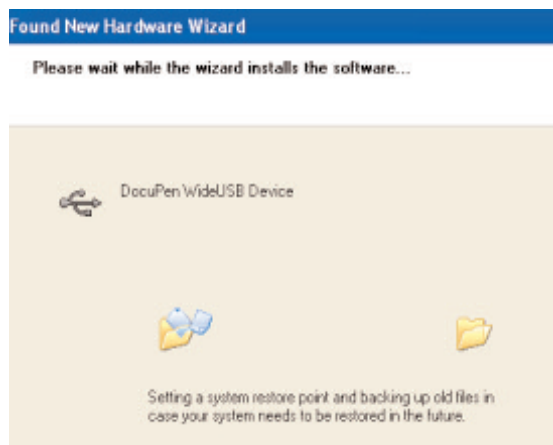
If you need further assistance don't hesitate to contact our Customer care: support@planon.com
TOLL FREE 1-877-DOCUPEN or 1888 507 3926

Installing the USB driver (continued)

2. In the next window Select **Search removable media** and click **Next**. Please make sure the Installation CD is in your CD ROM drive

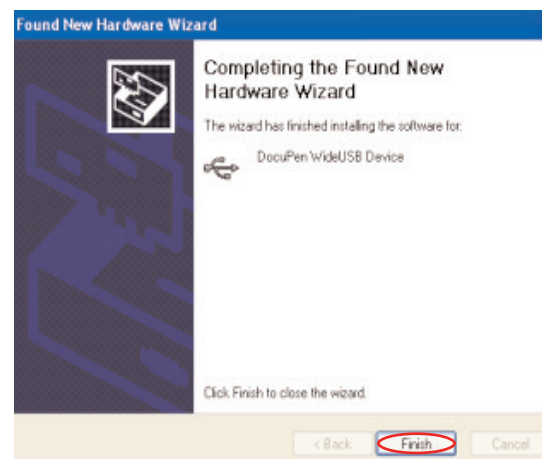


3. Wait a few seconds while driver is being installed



Installing the USB driver (continued)

4. Complete the USB installation by clicking on the **Finish** button



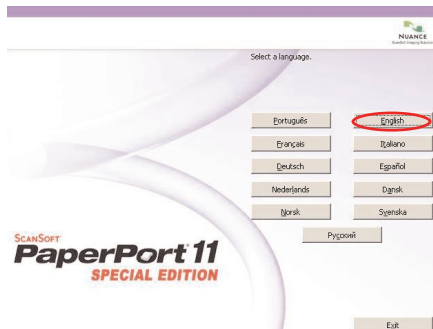
Note: Depending on your Operation System a **Restart** might be required. We recommend that you restart your computer after installation is completed

Note: The DocuPen is **completely independent** from the computer i.e. it should not (We recommend that it is not) connected to the USB cable while scanning. You need to connect to download, calibrate or simply to charge the battery

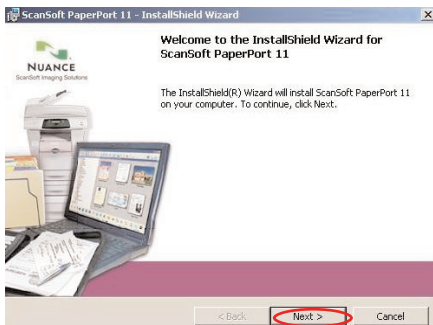
Make sure the USB port utilized for installation is the same used when working with the DocuPen

Installing the PaperPort Software

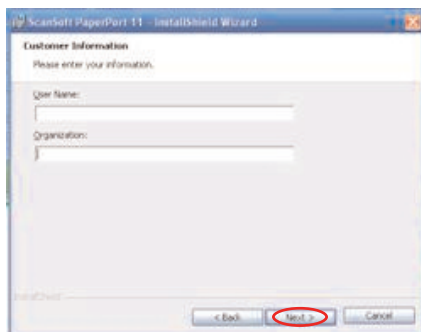
1. From the **DocuPen Install** window select **PaperPort** and simply follow the on-screen instructions.



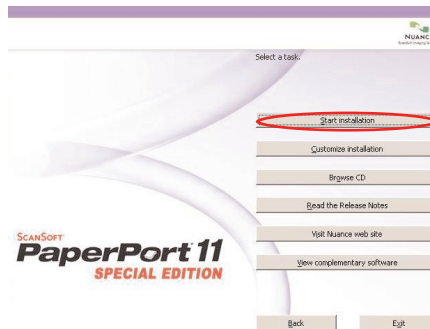
2. In the welcome window select your language and click this button.



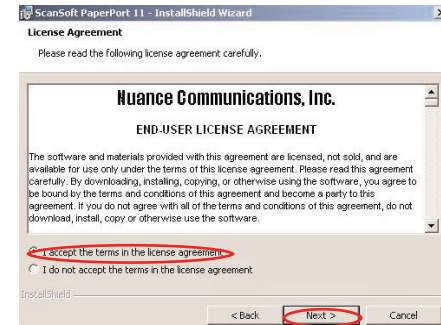
4. In the next window, click **Next**



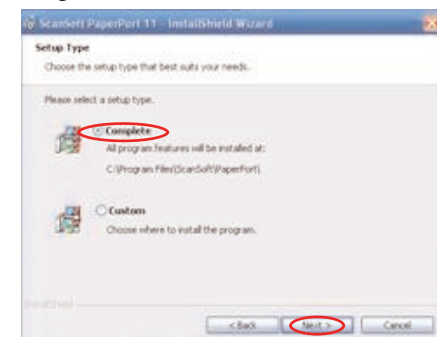
6. In the next window, fill in your information, click **Next**



3. In the next window please Click on the **Start Installation** button

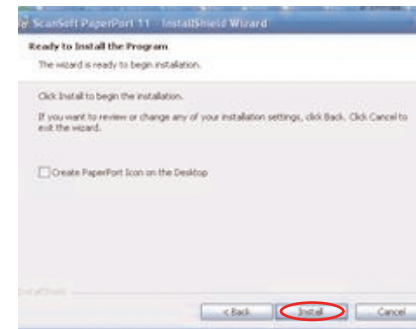


5. In the next window, accept the License agreement and click **Next**.

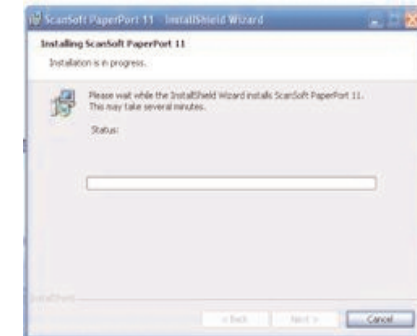


7. In the next window, select **Complete** Set up, click **Next**

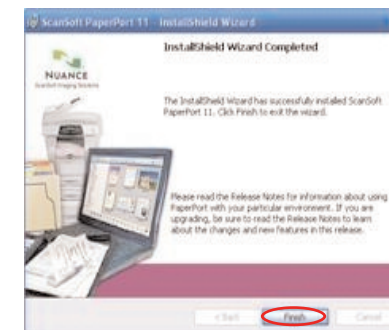
Installing the PaperPort Software (continued)



8. In the next window, click **Install**



9. In the next window, you will see the **Installation progress**



11. Installation complete, click **Finish**



10. Registration window - optional

Congratulations! The Driver and Software installation is now complete!

Now you are ready to use your DocuPen!

Note: Depending on your Operation System a **Restart** might be required

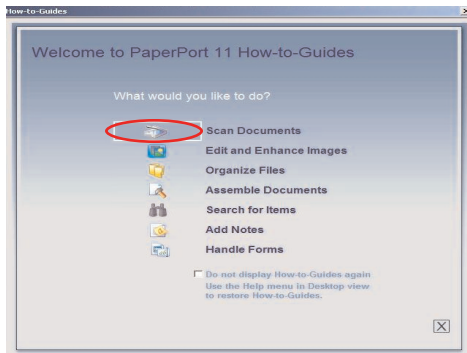
Download the scanned Images to PaperPort

As mentioned above you can use the DocuPen with any TWAIN compatible software package. As, however, we provide one of the best Document Management Software packages, i.e. Nuance's PaperPort we will explain how you download the images from the DocuPen to your computer using the PaperPort software. You can read the detailed instructions of how to use PaperPort in the Getting started guide which you can find in the Paperport folder under Program files on your computer.

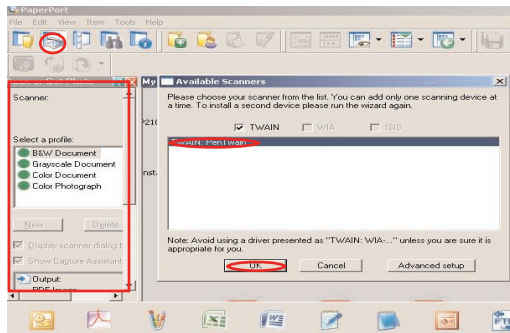
You can also use the stand-alone **DocuPen Application** which will allow to view the thumbnails and save the images without using the PaperPort software. Simply double-click on the thumbnails in the **DocuPen Scanner Control window** and it will open up with your default graphics software on your desktop.

Note: Make sure that your DocuPen is **CONNECTED** to your PC

1. Start the PaperPort Software
2. On you very first start you will see the How to Guide prompt window. Feel free to explore the detailed How to instructions within this guide.



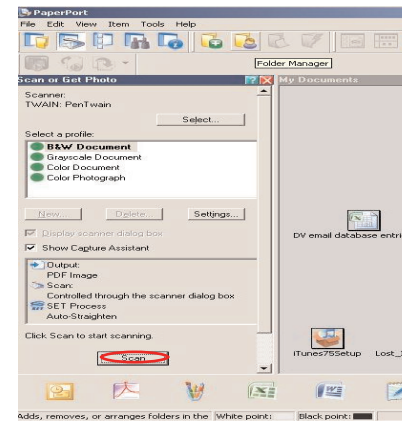
3. In the Command bar within PaperPort click on the **Select or Get Photo** button. The Scan pane will open on the left side of the PaperPort window.



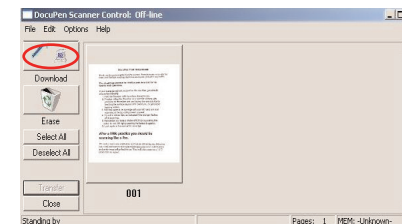
Simultaneously the **Available scanners** prompt window will open. Select **PenTwain** and click Ok.

You may have **more than one scanner**, so **PenTwain must** be selected when using the DocuPen.

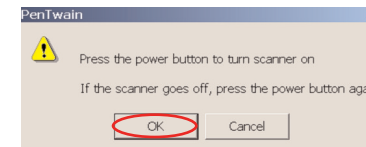
Download the scanned Images to PaperPort



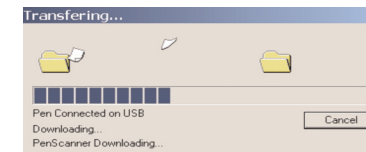
After you have selected PenTwain, you can click on the **Scan** button within the Scan pane of PaperPort.



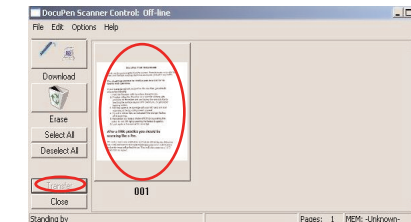
This will open the **DocuPen Scanner Control window**. The window indicates **Off-line**. This message changes to **On-line** only during download. Click on the **download** button and a dialog window will appear prompting you to turn the DocuPen ON.



In the dialog Click **OK** and press the **Power On** button on your DocuPen



The **"Transferring..."** dialog will pop-up, displaying the status of the download process

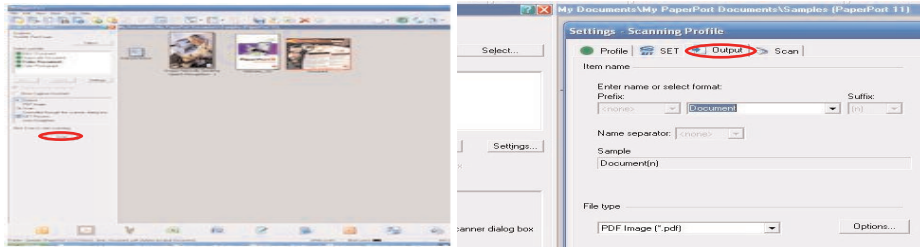


When the download is complete you will see thumbnails of the images in the **DocuPen Scanner Control** window. You can select the images you want to download by clicking on them or you can select all images by clicking on the **Select All** button

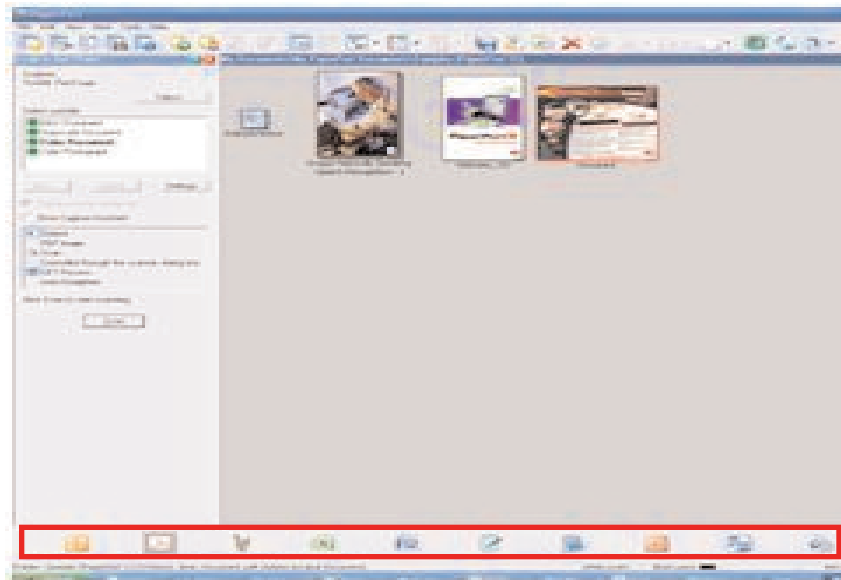
By clicking on the **Transfer** button you will transfer the selected thumbnails to the PaperPort desktop area

Download the scanned Images to PaperPort (cont.)

You can download the images in PaperPort's default file format - "**max**", which allows the most editing options. By selecting the **Settings..** link, however, you can select other file formats as well e.g. **jpg, tiff, bmp**, etc.



In the PaperPort desktop area you can select an image and it can be run under all the applications that the PaperPort software has detected such as Word, or Excel, etc. All relevant windows applications are automatically listed at the bottom status bar of the PaperPort window. At this moment you can run the OCR function by simply selecting the image and clicking on the Word icon (in the bottom Status Bar)



For further details on using Paperport Software please look at the getting started guide which may be found in the Paperport folder under Program Files in your computer.

Installing the Abbyy FineReader Sprint Software

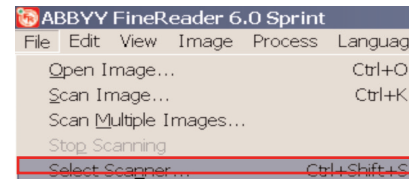
Note: The Abbyy Sprint Software is available exclusively with the DocuPen RC850.

Please insert the Abbyy Sprint CD into your computer CD drive. The CD should automatically start and a window with the Abbyy software for PC and MAC will open. Double click to open the Abbyy PC folder and double click the SetUP.exe to install. Please follow the onscreen instructions to complete installation.

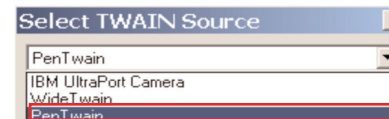
Note: The Abbyy Sprint Software is compatible with all Mac OS up to 10.3.9 - non Intel based

Convert scanned images to text using Abbyy Sprint

Note: Make sure you **connect** the DocuPen with your PC and start the Abbyy FineReader





In the File menu choose **Select Scanner...**



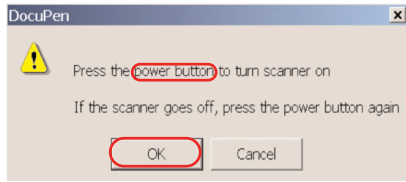
In the dialog that appears select **PenTWAIN**

Note: Step 1 & 2 only apply **the first time** you use the DocuPen

 To start the **download & recognition** after scanning, click on the **Scan&Read** button within the Abbyy window

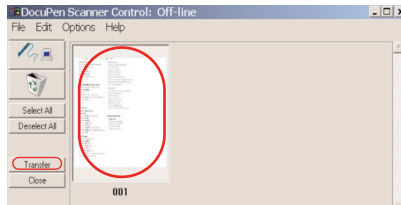
 In the DocuPen Scanner Control window that appears, click on the **download** button to transfer your scans from the DocuPen's memory bank to your PC

Convert scanned images to text using Abbyy Sprint (Continued)



A prompt window will ask you to press the DocuPen scanner **power** button.

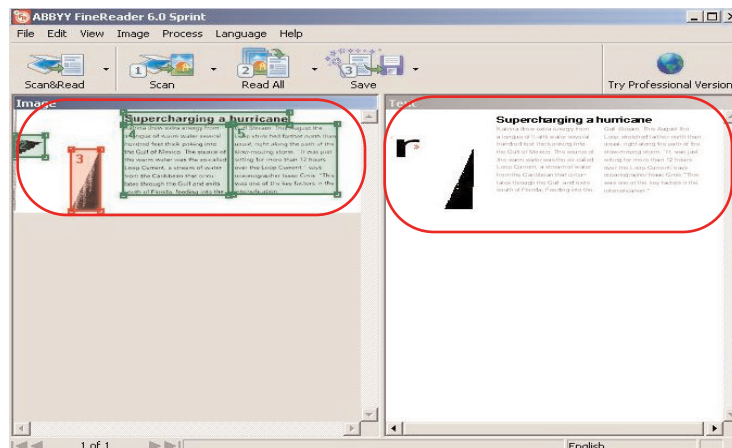
Press the DocuPen **power** button and click the **OK** button in the prompt window



After the download is complete, **thumbnail images** of your scanned pages will display in the DocuPen Scanner Control window.

To download the image into Abbyy FineReader, simply select the image thumbnail in the DocuPen Scanner Control window and click the **Transfer** button

Abbyy will convert the image into editable text. The Image window will display the scanned page as an image and the Text window will display the **editable text**

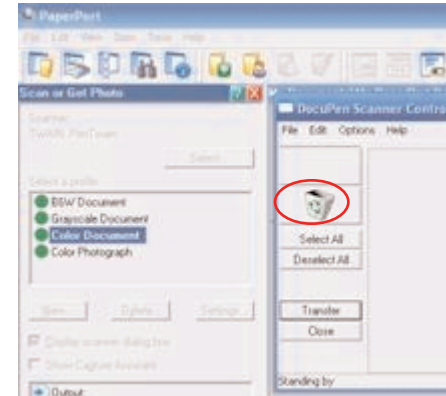


Erasing the DocuPen Memory

After you have saved the desired image files on your hard disk, it is recommended that you empty the DocuPen's memory bank. By doing so, you ensure maximum storage capacity and optimum download speed.

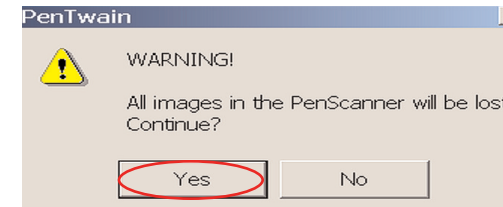
Note: Make sure that your DocuPen is **CONNECTED** to your PC

1. While in PaperPort (or Abbyy) simply click on the **Scan** button

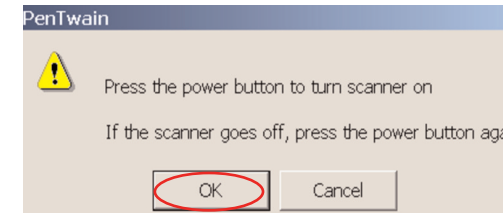


2. The **DocuPen Scanner Control** Window will open

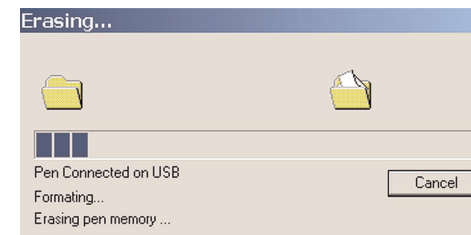
3. In the **DocuPen Scanner Control** Window select the **Recycle Bin** button



A dialog window will prompt you that you are about to erasing DocuPen's memory bank. Click on the **Yes** button.

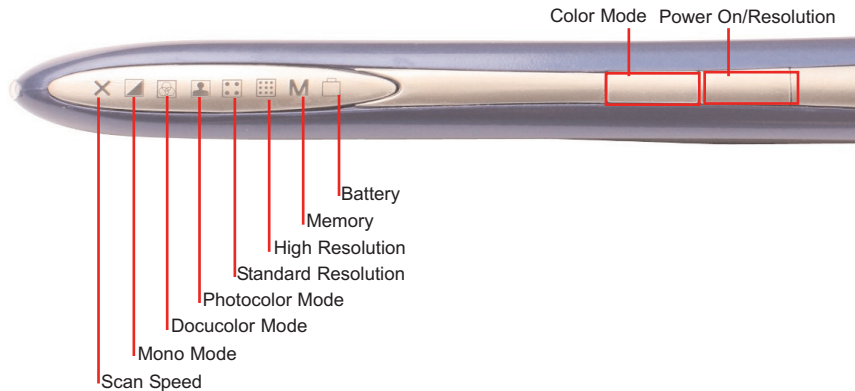


A pop-up dialog prompts you to turn your DocuPen **ON**. Press the **Power ON** button on the DocuPen and click on the **OK** button in the dialog window.



The DocuPen memory bank will be erased.

Scan Settings



The DocuPen RC800 has two control buttons and eight LEDs indicating the selected scan settings.

By pushing the **Power ON/OFF Resolution (Rez)** button you can:

1. Turn scanner **ON**. The corresponding LEDs will light on, indicating the current scan settings
2. Change between **High Resolution** and **Standard Resolution** setting
3. Turn scanner **OFF** - The DocuPen is designed to turn itself OFF automatically. You can also turn it OFF manually by pushing and holding the button for 5 seconds

By pushing the **Color Mode** button you can switch between Mono, Docucolor (Standard Color) and Photocolor setting

You have to start the scanning operation within a few seconds after turning the DocuPen ON. If there is no manipulation, i.e. no movement or no setting-up of the Scan mode, the scanner will turn itself OFF. You will need to turn it ON again.

Following on the next page you can see a detailed explanation of the different Scan modes and the corresponding LED configurations.

Note: For optimal scan quality and memory usage we recommend scanning in **Monomode in 200 dpi or 400 dpi** and in **Docu- and Photocolor Modes in 100 or 200 dpi**.

LED	Explanation
Speed	Scan speed indicator - if this LED blinks during scan operation, then slow down.
Mono Color	This LED indicates that the scan will be performed in Monochrome or Grayscale mode.
Standard Color	This LED indicates that the scan will be performed in Docucolor (Standard) mode [12bit color]
Photo Color	This LED indicates that the scan will be performed in Hi Quality Photocolor mode [24bit color]
Standard Rez	This LED indicates that the scan will be performed in standard resolution [100,200 dpi]
High Rez	This LED indicates that the scan will be performed in high resolution. [200,400 dpi]
Memory	This LED shows the available memory capacity. When it flashes in Green 75-100%, Yellow/Orange 26-50%, Red <25% Free
Battery	This LED shows the available battery capacity on the pen When it flashes in Green 75-100%, Yellow/Orange 26-50%, Red <25% Free

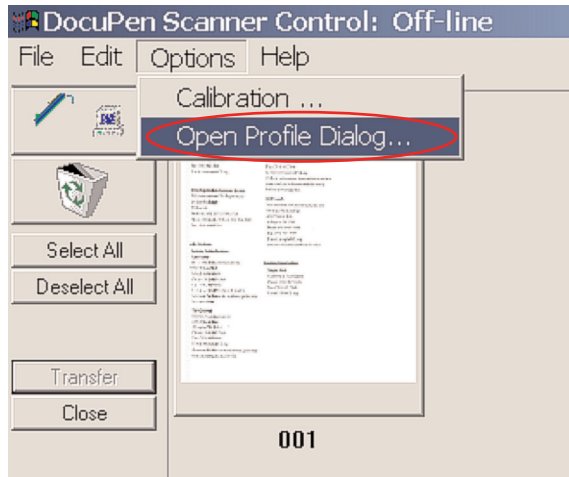
LED Indicators

The 8 LED indicators at the top of the DocuPen from left to right indicate the following:

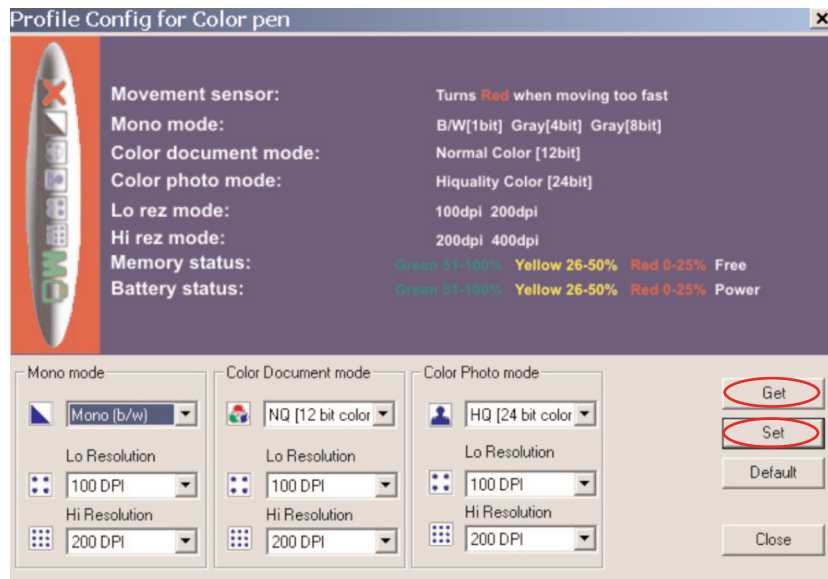
LED Combination	Scan Mode Explained
	Monocolor Standard-rez Mode - Takes the least amount of memory. Best suited for black & white documents, graphics or handwriting.
	Monocolor Hi-rez Mode - Best suited for fine print documents, lower quality faxes or when the result needs to be printed out.
	Docucolor Standard-rez Mode - Best suited for web-view of color images (magazines, newspapers)
	Docucolor Hi-rez Mode - Same as above but image is in higher resolution and best suited for print.
	Photocolor Standard-rez Mode - Best suited for web-viewing and printing of high quality images
	Photocolor Hi-rez Mode - Best suited for printing of high quality images. (NOTE: The images scanned in this mode are very large in size!)

DocuPen Scan modes - Profile Configurator

You can setup the exact values of the color and resolution modes, using the interactive **Profile Configurator** dialog box. The **Profile Configurator** dialog is part of the **DocuPen Scanner Control** window and can be started by selecting the **Open Profile Dialog..** from the pull-down menu in the **DocuPen Scanner Control** window.



In the **Profile Configurator** dialog you can choose from: (See table on following page)



Scan mode - Profile Configurator (continued)

	Mono Mode	Standard Color Document Mode	Hi-Color Photo Mode
Color Depth	Mono [b/w 1Bpp] Grayscale [4Bpp] Grayscale [8Bpp]	Docu Color [12bit]	Photo Color [24bit]
Standard Resolution	100 or 200 dpi	100 or 200 dpi	100 or 200 dpi
Hi Resolution	200 or 400 dpi	200 or 400 dpi	200 or 400 dpi

You can select the desired values from the corresponding pull-down menus in the **Profile Configurator** dialog. When desired selection is completed, you can press the **Set** button. You will be prompted to turn the DocuPen ON and then the values will be transferred to the DocuPen.

Note: Your DocuPen must be **CONNECTED** to your PC

You can also check the current values in your DocuPen by selecting the **Get** button. You will be then prompted to turn the DocuPen on and then the value will be displayed in the corresponding cell.

By clicking the **Default** button the values will be automatically set to:

	Mono Mode	Standard Color Document Mode	Hi-Color Photo Mode
Color Depth	Mono [b/w]	Docu Color [12bit]	Photo Color [24bit]
Standard Resolution	200 dpi	100 dpi	100 dpi
Hi Resolution	400 dpi	200 dpi	200 dpi

Note: You must click on the **Set** button after every manipulation of the data. Only then will the data be transferred and saved into the DocuPen!

When desired color and resolution values are set and uploaded to DocuPen you can close the **Profile Configurator** dialog. Click the **Close** button within the **Profile Configurator** dialog box and resume your scanning operation.

DocuPen Color Calibration procedure

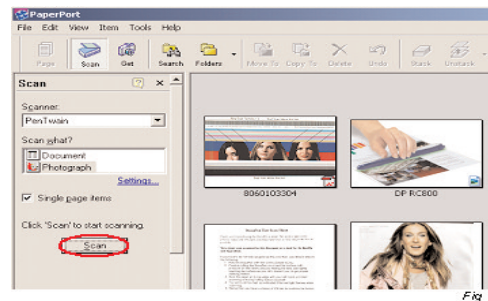
Note: In order to perform Color Calibration you need to print out the Color Calibration sheet. You can download the file from the installation CD or from the link: <http://www.planon.com/drivers.php>. Please print the color calibration sheet on photo paper in landscape mode.

Before starting the calibration procedure please make sure that you have downloaded our latest DocuPen PenTwain drivers. You can download the drivers from the installation CD or from the following link: <http://www.planon.com/drivers.php>

Note: Your DocuPen must be **CONNECTED** to your PC before starting the Calibration procedure

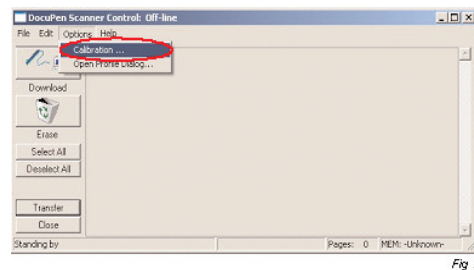
The DocuPen is factory calibrated and there should be no need to re-calibrate. We advise you to recalibrate only if you experience poor scan quality, e.g. scanned image appear in white or black.

1. Connect the DocuPen to your computer using the USB cable.



2. Start the Paperport software.

3. Press and hold the left Shift and Ctrl keys on your keyboard and then click the Scan button within the Paperport window.



The DocuPen Scanner Control window will appear with the Calibration function enabled.

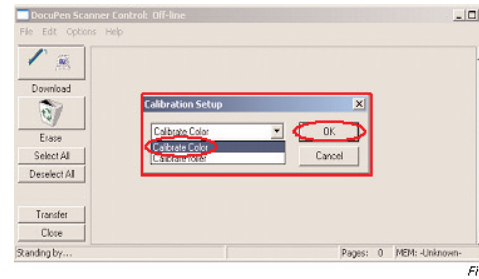
4. In the DocuPen Scanner Control Window, click on Options and select the Calibration function. If you don't see the Calibration function please repeat step 3.



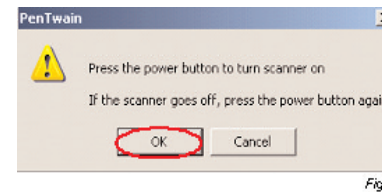
5. In the **Calibration Setup** window that appears please **Calibrate Color** and click **OK**.

4. You will be prompted to turn the DocuPen ON. Press the **Power On** button on your DocuPen and Click **OK** in the Dialog window.

DocuPen Color Calibration procedure (continued)

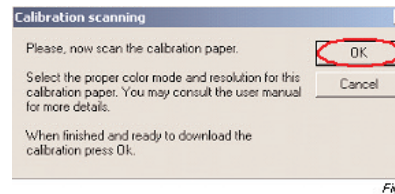


5. In the Calibration Setup dialog window - Select Calibrate Color and confirm by clicking the OK button

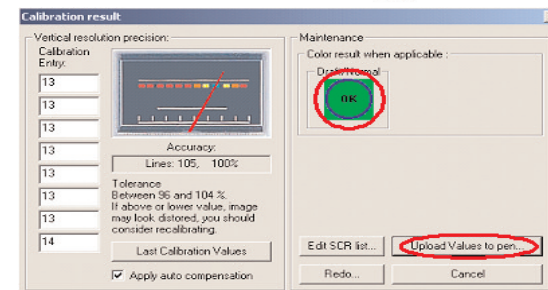


6. You will be prompted to turn the DocuPen ON. Press the Power On button on your DocuPen and Click OK in the PenTwain Dialog window

7. After the memory has been formatted the Calibration scanning dialog window will appear. Please disconnect the DocuPen from the USB cable and position it on top of the Color Calibration sheet. Please scan the sheet in photo mode and high resolution.



8. The DocuPen will now save the Calibration image into memory. After the image is saved, please re-attach the DocuPen to the USB cable. Now press the Power ON button on the DocuPen and click the OK button within the Calibration scanning dialog window



9. The Calibration result dialog window will appear. You should see the calibration values to the left and a Green OK sign to the right

10. Finally, click Upload Values to pen button in the Calibration result dialog window to send the calibration result to the DocuPen. You will be prompted to turn the DocuPen ON. Press the Power ON button on the DocuPen and click OK in the dialog window - this will store the new values.

You have successfully recalibrated your DocuPen!

DocuPen Roller Calibration Procedure

Note: In order to perform Color Calibration you need to print out the Color Calibration sheet. You can download the file from the installation CD or from the link: <http://www.planon.com/drivers.php>. Please print the color calibration sheet on photo paper in landscape mode.

The DocuPen is factory calibrated and there should be no need to re-calibrate. We advise you to recalibrate only if you experience poor scan quality, e.g. if your scanned image looks disproportionally stretched (or shrunk) then you need to calibrate the rollers.

As a rule, color calibration must be performed before roller calibration

Note: Before starting the calibration procedure please make sure that you have downloaded our latest DocuPen PenTwain drivers. You can download the drivers from the CD or the following link: <http://www.planon.com/drivers.php>

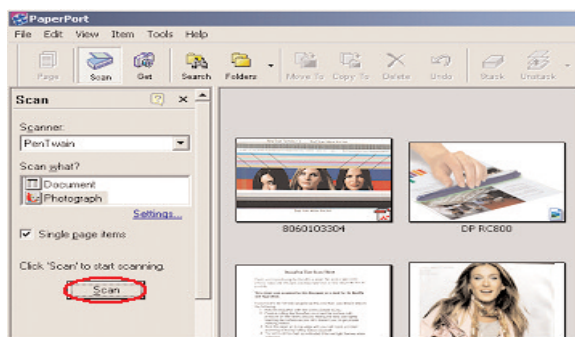


Fig 1

1. Connect the DocuPen to your computer using the USB cable.
2. Start the Paperport software.

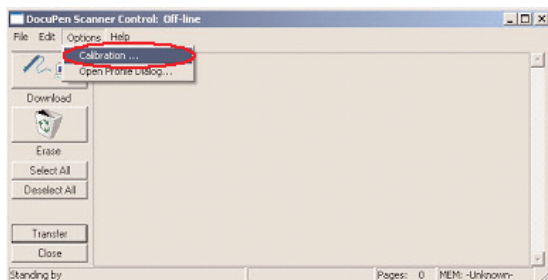
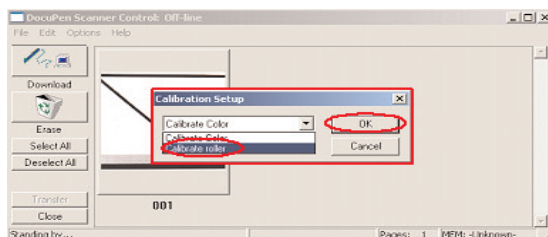


Fig 2

3. Press and hold the left Shift and Ctrl keys on your keyboard and then click the Scan button within the Paperport window. The DocuPen Scanner Control window will appear with the Calibration function enabled.



4. In the DocuPen Scanner Control Window, click on Options and select the Calibration function. If you don't see the Calibration function please redo step 3.
5. In the Calibration Setup dialog window - Select Calibrate Roller and confirm by clicking the OK button

DocuPen Roller Calibration Procedure (continued)

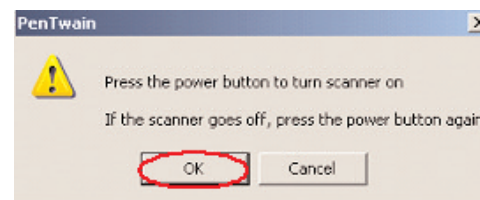


Fig 4

6. You will be prompted to turn the DocuPen ON. Press the Power On button on your DocuPen and Click OK in the PenTwain Dialog window

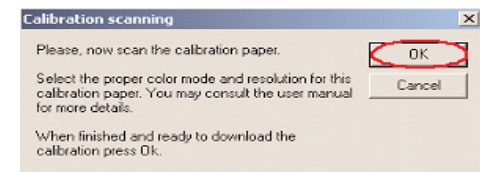


Fig 5

7. After the memory has been formatted the Calibration scanning dialog window will appear. Please disconnect the DocuPen from the USB cable and position it on top of the Roller Calibration sheet.

Please scan the sheet in B&W mode and high resolution.

8. The DocuPen will now save the Calibration image into memory. After the image is saved, please attach the DocuPen to the USB cable. Now press the Power ON button on the DocuPen and click the OK button within the Calibration scanning dialog window.

9. The Calibration result dialog window will appear. You should see the roller calibration values to the left. If the accuracy is within 96-104%, you have successfully calibrated the rollers!

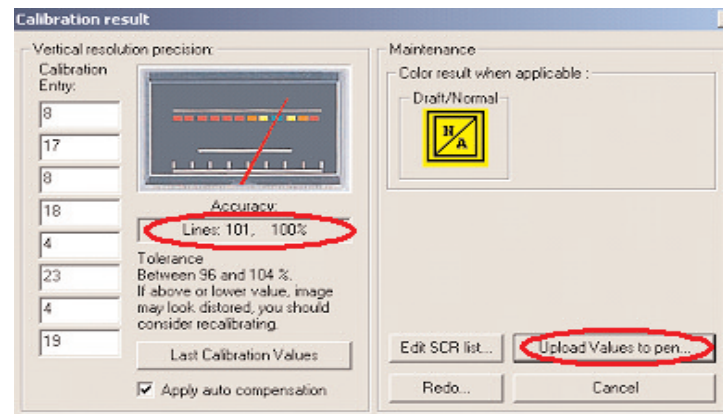


Fig 6

10. Finally, click Upload Values to pen button in the Calibration result dialog window to send the calibration result to the DocuPen. You will be prompted to turn the DocuPen ON.

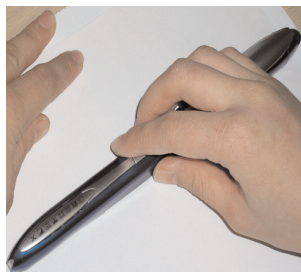
Press the Power ON button on the DocuPen and click OK in the dialog window - this will store the new values.

You have successfully recalibrated your DocuPen!

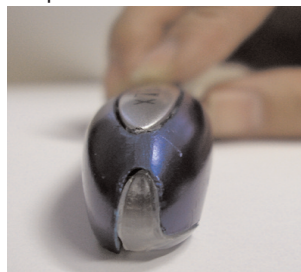
Points to Remember Before You Scan

What you scan is what you get. The DocuPen is sensitive to changes in direction and scan speed and records every movement you make. The more uniform your scan swipe, the better your scanned image results. This may take a little practice at first. Scanning too quickly or abruptly changing acceleration causes the **RED X** LED to flash, reminding you to reduce your scanning speed. To obtain the best scan results, note the following:

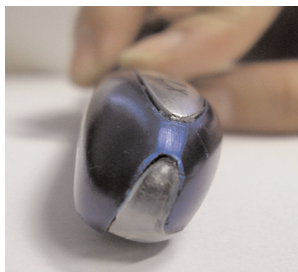
Hold document



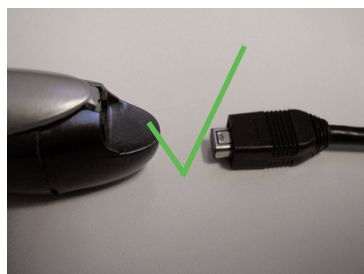
Keep DocuPen flat



Do Not tilt



The document you scan must be well supported on a smooth flat surface. It is recommended that you hold the top of the document with one hand while you scan with the other. Place the DocuPen just above the area you want to scan, with the LEDs on the left side of the document to be scanned.



Detach the USB cable while scanning. It could hinder your gliding motion by pulling on one side of the DocuPen.



Remove staples or clips as they will impede the gliding movement and the resulted scan will be distorted.

Apply even pressure, in the center of the scanner to allow the rollers to rotate smoothly.

Press the **Power ON** button, select the desired color and resolution settings and slowly glide the DocuPen down across the area you want to scan. The unit begins scanning as soon as you start moving the pen. When you stop moving, the scan light (at the bottom of the pen) shuts off and the DocuPen saves the data. You must wait momentarily till the data is stored in memory. The DocuPen will then automatically shut off.

On-board memory and External memory card

DocuPen RC800 is equipped with 8MB on-board Flash-memory and a slot for external MicroSD memory card which gives you almost unlimited capacity.

The MicroSD memory card slot is located on the right-hand side of the DocuPen under the removable cover.

To remove the cover you have to place your index finger on the right side of the cover (just above the USB port) and gently lift up.

Closed cover



The cover detaches and you see the MicroSD memory slot covered by the cradle.

Open Cover/ External memory slot



You will see the compartment for the memory card.



Place the MicroSD card in the slot, sliding it to the right. Close the DocuPen cover.

Note: Newly inserted external memory must be **formatted** before it is recognized by the DocuPen

The formatting of the memory is accomplished by choosing the recycle symbol in the **DocuPen scanner control window** to erase the DocuPen memory which also formats this new memory. (See Erasing the DocuPen Memory in this manual for more details)

WARRANTY

If you find physical defects in the materials or the workmanship used in making the product described in this document, Planon will repair, or at its option, replace, the product at no charge to you, provided you return it (postage prepaid, with proof of your purchase from the original reseller) during the 3-month period after the date of your original purchase of the product. Upon registration of the product with Planon at www.planon.com, the warranty is automatically extended for an additional 9 months for a total of 12 months.

1. **Term** - The Standard Warranty is effective for 12 months from the original date of purchase.
2. **Service Agreement** - Customer must call Planon Customer support for a Return Merchandise Authorization (RMA) number. Upon prepaid return of any malfunctioning unit, Planon will repair or replace, at its option, such unit and return it, postpaid, to the owner.
3. **Equipment Changes** - Service coverage applies only to unmodified equipment or products modified by authorized personnel.
4. **Exclusions** - 12 month warranty covers printer and accessories only. Separate warranties cover the battery and Planon Paper (90 days from original purchase). Warranty service does not include damaged, modified, or misused equipment. Such equipment is subject to standard repair charges.
5. **Identification** - Planon shall be allowed to place identification marks on equipment covered under this agreement.
6. **Planon Responsibility Limits** - Planon shall not be liable for incidental, special, direct, indirect, or consequential damages. Its total liability is limited to actual damages up to the cost of the product.
7. **Ownership** - The customer represents that they are the owner of the equipment or they have authority from the owner to order warranty service.
8. **Controlling Laws** - This agreement will be governed by the laws of the Province of Ontario, Canada.
9. **Force Majeure** - Planon is not responsible for any failure to render service due to strikes, fire, flood, other acts of God, or causes beyond its control.
10. **Assignment** - Planon may assign this agreement and its rights to any parent, subsidiary, or affiliate.

Appendix

A. DocuPen RC 800 Specifications

Size - 8.9"x0.5"x0.5" (227X13x13 mm)

Weight - 2 oz, 57 grams

Resolution - 100-400 dpi

Scan mode - B/W[1bit], Grayscale [4bit/8bit], Standard color [12 bit], Hi color [24 bit]

Scan width - 8" (205mm)

Scan Speed - 4-10 seconds Letter-size page (depending on resolution and color mode)

Memory - 8 MB flash; or external MicroSD (sold separately). MicroSD memory card slot - 128 MB, 256 MB, 512MB. The number of pages varies depending on text, graphics, and scanning resolution

Battery - Lithium Ion Rechargeable

Battery Charge - Full Battery Charge 50 min

Software interface - PenTwain driver & DocuPen application, OCR Software

Scanning method - Contact image sensor

Included Accessories - USB Cable, Leather Case, CD - Installation and Manuals, Quickstart Guides

SOFTWARE SUPPORT

Windows 2000/ME/XP/Vista TWAIN driver interface

Windows Imaging or other scan software such as PaperPort OCR CD-ROM installation disk

B. Proper Handling and Safe Use

Avoid bending or dropping the DocuPen unit.

Do not scan over sharp objects such as staples, or paper clips

Do not store the unit in high, or very low temperatures, or humid or dusty places.

Do not place or drag the scanner lens down on a hard abrasive surface.

If you drop the unit in water or get water inside it, contact your Planon Systems Solutions Inc. representative.

To help keep the scanning area clean, store the unit in the leather pouch when not in use.

After storing for extended periods of time it is recommended to plug the unit in to a USB source to recharge the battery for optimum performance.

If the unit becomes dirty, it can be wiped with a soft damp cloth or alcohol swab.

If unit is left in extreme cold or hot conditions, allow to adjust to normal room temperatures before proceeding to scan.

Avoid any abrasive or harsh chemicals.

Do not leave this device within the reach of children.

C. Technical Support

Planon Systems Solutions Inc.

1-877-DOCUPEN (1-877-362-8736)

support@planon.com

For international customer support: 1 888 507 3926