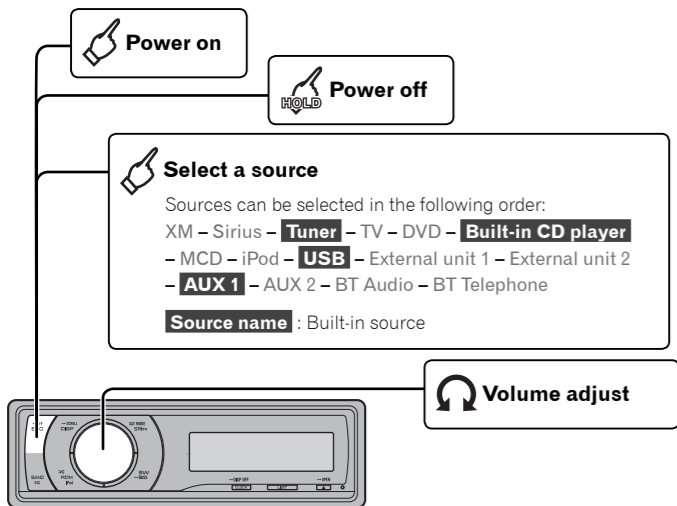


This guide is intended to guide you through the basic functions of this unit.
For details, please refer to the Operation manual stored on the CD-ROM.
Furthermore, manuals are available on the website.

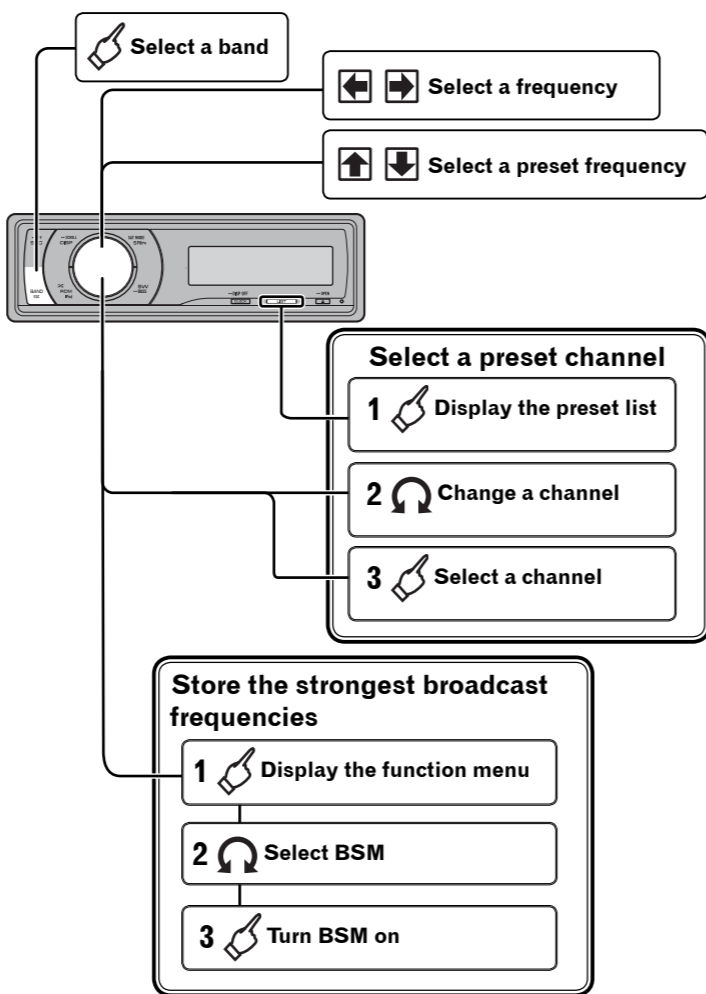
<http://www.pioneerelectronics.com>



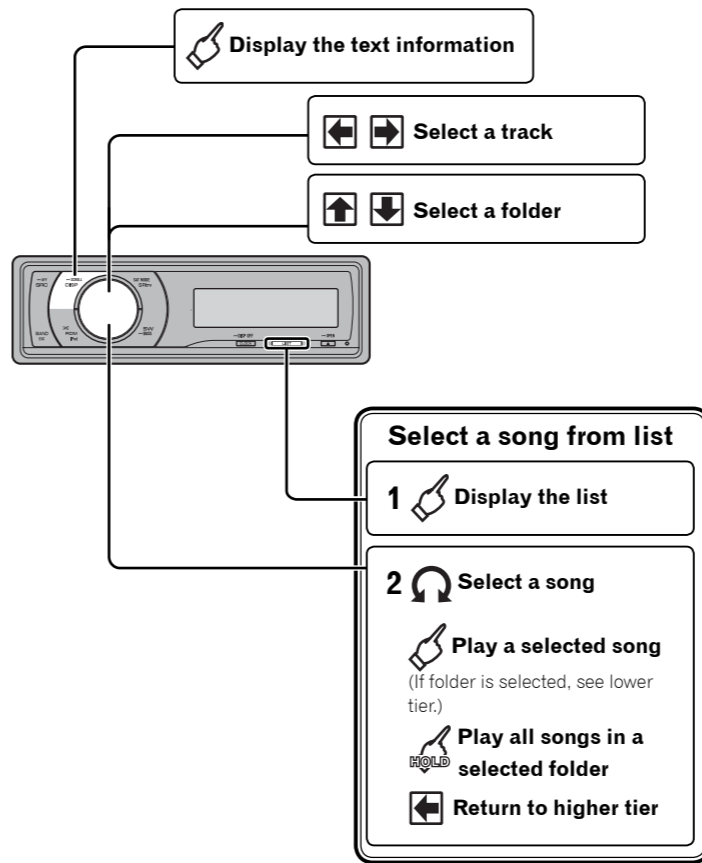
Basic operation



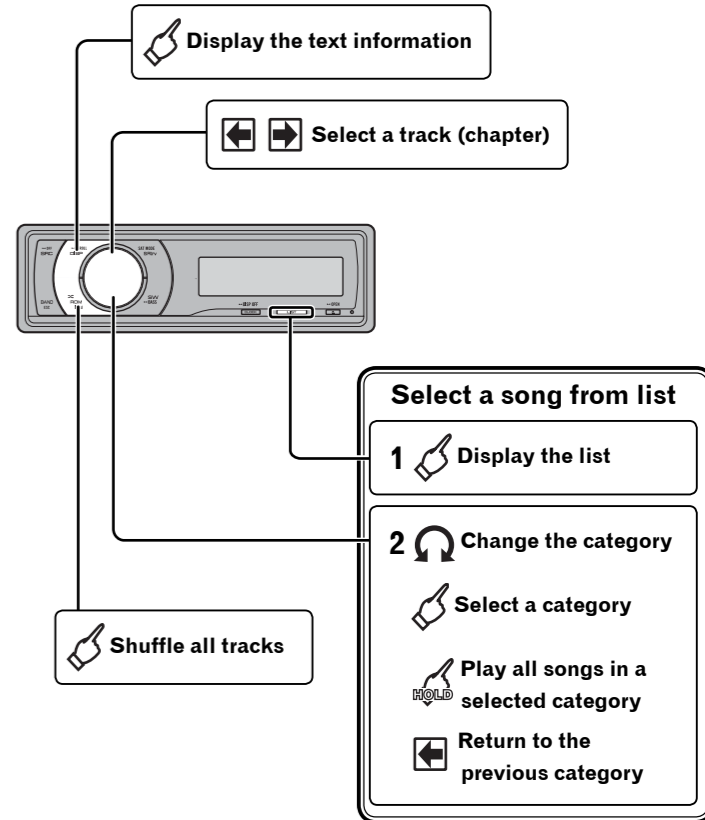
Tuner operation



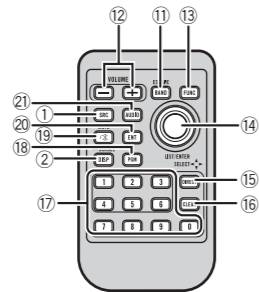
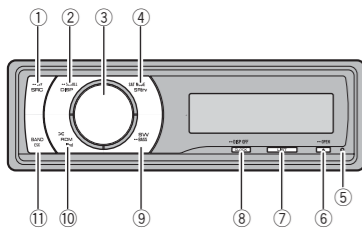
Built-in CD and USB operation



iPod® operation



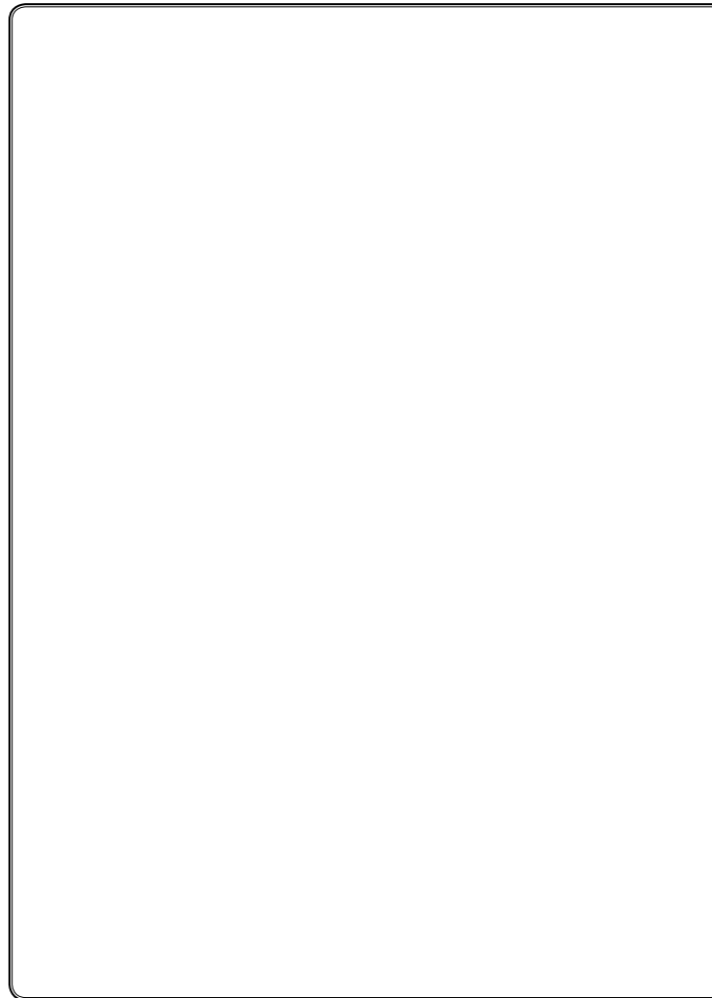
What's what



- 1 SRC/OFF button**
This unit is turned on by selecting a source. Press to cycle through all the available sources.
- 2 DISP/SCROLL button**
Press to select different displays. Press and hold to scroll the text information.
- 3 MULTI-CONTROL**
Move to perform various operations. Turn to increase or decrease the volume.
- 4 S.Rtrv/SAT MODE button**
Press to turn Sound Retriever function on or off. When XM tuner or SIRIUS tuner is selected as the source, press to change the channel select mode.
- 5 RESET button**
Press to reset the microprocessor.
- 6 ▲/OPEN button**
Press to eject a CD from your built-in CD player. Press and hold to open or close the front panel.
- 7 LIST button**
Press to display the disc title list, track title list, folder title list, file list or preset channel list depending on the source.
- 8 CLOCK/DISP OFF button**
Press to change to the clock display. Press and hold to turn the display indication and button illumination off or on.
- 9 SW/BASS button**
Press to switch to subwoofer setting menu. When operating subwoofer menu, press to switch setting. Press and hold to switch to bass boost menu.
- 10 RDM/∞/iPod button**
Press to turn random function on or off while using CD or USB. While using iPod, press this button to shuffle all tracks. Press and hold to change the control mode of iPod while using an iPod connected USB connector of this unit.
- 11 BAND/ESC button**
Press to select radio band. Press to return to the ordinary display when operating menu.

- 12 +/- (VOLUME) button**
Press to increase or decrease volume.
- 13 FUNC button**
Press to select functions.
- 14 Thumb pad**
Move to perform manual seek tuning, fast forward, reverse and track search controls. Also used for controlling functions. Functions are the same as **MULTI-CONTROL** except for volume control.
- 15 DIRECT button**
Press to directly select the desired track.
- 16 CLEAR button**
Press to cancel the input number when **0** to **9** are used.
- 17 0 to 9 buttons**
Press to directly select the desired track, preset tuning or disc.
- 18 PGM button**
Press to operate the preprogrammed functions for each source.
- 19 MUTE button**
Press to turn off the sound. To turn on the sound, press again.
- 20 ENT button**
Press to change to the entertainment display.
- 21 AUDIO button**
Press to select various sound quality controls.

Notepad



Notepad

