



2014 **PRODUCT** GUIDE

SPEAKERS FOR YOUR **LIFE**™

CONTENTS



OUR STORY

The history of Phase Technology goes back to 1955, when an inventor named Bill Hecht turned his love of audio into a speaker manufacturing business.



PREMIER COLLECTION

The Premier Collection represents the highest expression of all Phase Technology speakers. Each speaker combines handcrafted quality with proprietary technology in a sleek, modern package that looks as good as it sounds.



PHASE VELOCITY

One look at Phase Velocity and it's clear: Phase Technology has redefined the standards for speaker engineering with redesigned drivers you have to hear to believe, and attractive cabinet designs that complement great sound.



CINEMICRO®

The CineMicro is a first-class home theater system that offers big sound from a small, attractive, and easy to use design. The 5.1 system includes four satellite speakers that function as mains and surrounds, a dual woofer center channel, and one 8" long throw powered subwoofer.



SUBWOOFERS

Phase Technology's dedication to innovation and product development has resulted in subwoofers that deliver visceral low-frequency audio, yet are still capable of handling tremendous power for high-output situations.



**SOLARIS®
OUTDOOR**

Each Solaris speaker faithfully reproduces every aural detail and emotional nuance of your entire music library, and their beautiful exteriors are tough enough to powerfully perform through the worst of weather conditions.



PENDANT

A unique combination of aesthetics and sound, HS Series speakers bring advanced circuitry and superb coverage to a pendant design that is ideal for open or high ceilings.



**TEATRO®
SOUNDBAR**

Phase Technology has engineered the perfect audio solution for today's flat screen televisions. One easy to install Soundbar accurately produces left, center and right channel sound with an incredibly wide soundstage.



FLUSH-MOUNT

Phase Technology features a variety of in-wall and in-ceiling speakers for any application. Advanced circuitry and superior materials envelop listeners in high-fidelity sound, while protecting the speakers from being over driven.



dARTS

What do you get when you combine advanced technology with digital crossovers, amplification and the most advanced room-correction software available? You get the perfect home theater system, where every seat is the "sweet spot".

SPEAKERS FOR YOUR LIFE™

MORE THAN A HALF CENTURY OF GREAT SOUND

Phase Technology® began as United Speaker Systems in 1955 and has stayed on the leading edge of speaker design and engineering since that time. Our founder, Bill Hecht, began his career developing Cinemascope stereo technology for motion picture projection in the early 1950s. Bill worked for the General Projection Company in New York and was involved in installing projectors and sound systems in many of America's great theaters, including Radio City Music Hall.

In 1959, Bill Hecht's United Speaker Systems (USS) built the legendary XP-1 for Fisher Radio, establishing Fisher as a major brand in the fledgling home audio market. In the years that followed, USS grew into a vertically-integrated speaker designer and manufacturer, producing components and finished products for clients ranging from small high-end manufacturers to the biggest names in the business. Hecht's focus on innovation bore fruit again in 1967, when he patented the soft-dome tweeter (U.S. Patent #3328537). The soft dome became the most commonly used tweeter of the last 50 years.

In 1983 the Hecht family founded Phase Technology, to put their creative engineering into a speaker line of their own. Since that time, PhaseTech has developed, patented, and employed Vapor Deposited Titanium woofers, self-damping voice coils, uniframe woofer construction, improved mounting systems, solid piston drivers, and dozens more improvements in speaker design.

Today, Phase Technology is known for producing speakers that match the performance and reliability of any high-end manufacturer at a value that's second to

none. Bill's son Ken Hecht, who now serves as MSE Audio's Vice President of R&D, is an engineer fully involved in the development of all Phase Technology home-entertainment speakers. He, along with the rest of the design team at MSE Audio, ensures that our products consistently earn critical acclaim from home theater and audiophile enthusiasts worldwide.

Once a new product's concept has been determined, Phase Technology's engineers use sophisticated computer modeling programs to assist in designing speaker drivers, crossover circuits, and a cabinet. Extensive testing is then done in the lab and in an anechoic (no echo) chamber. Once engineers are satisfied with the basic design, a prototype undergoes many hours of listening with a wide variety of music. Next, the new design is evaluated under the demanding rigors of movie soundtracks in various digital formats played at very high sound pressure levels. Only after a speaker is finely tuned, both with test equipment and, most importantly, by ear, is it ready for production.

That dedication to quality is important because today's high-definition video deserves high-definition audio. No matter how good the picture is, it won't be a theater experience if helicopters sound like toys, gunshots sound like firecrackers, and dialogue is muddy. To truly immerse yourself in film, audiophile-quality sound is as important as high-definition video, if not more.

One of the keys to Phase Technology's amazing sound is in the Absolute Phase® crossover networks built into most speakers. These crossovers ensure that

the speaker drivers are acoustically and electronically "in phase" and thus moving in unison. This is especially apparent when a sound effect moves from left-to-center-to-right or vice versa. The transition is heard as a smooth flow from one speaker to the next, creating a large, well defined soundstage with precise imaging and increased depth of field. However, our commitment to the highest standards doesn't end with crossovers.

Being a vertically integrated speaker manufacturer, we've designed and patented several unique drivers capable of producing sound with unmatched clarity. The industry-standard soft-dome tweeter was invented and patented in 1967. We have also developed several new low-frequency drivers, using materials from glass fiber to polypropylene to Kevlar. Our Vapor Deposited Titanium (VDT®) process builds lightweight yet extremely rigid drivers for our Phase Velocity series. Another one of our patents is the solid piston woofer, which utilizes a tri-laminate of Kevlar, RPF and glass fiber to achieve a flat woofer that inhibits the "break-up modes" that deteriorate clarity and smoothness. We've also patented mounting features and construction methods that eliminate the vibrations and standing waves that can ruin a good listening experience.

The digital revolution has led speaker manufacturers in new directions, and once again, Phase Technology is on the leading edge. Digital signal processing, 21st century materials, self-amplified loudspeakers, wireless technology: the future holds amazing things for loudspeaker design, and you can count on Phase Technology continuing to lead the way.



- 1** - THE INNOVATIVE AND STYLISH PREMIER COLLECTION SERIES REPRESENTS THE HIGHEST EXPRESSION OF ALL PHASE TECHNOLOGY HAS LEARNED IN ITS MORE THAN 55 YEARS OF EXPERIENCE IN SPEAKER DESIGN AND MANUFACTURING.
- 2** - PHASE TECHNOLOGY'S PATENTED SOFT DOME TWEETER, FIRST PRODUCED IN 1962, REPRODUCES HIGH FREQUENCIES WITH CRYSTAL CLEAR ACCURACY.
- 3** - THE PC-9.5 IS A HANDSOME, FLOOR STANDING, FOUR-WAY MODEL THAT REPRESENTS THE FINEST SPEAKER IN THE SIGNATURE PREMIER COLLECTION.



PREMIER COLLECTION

HIGH PERFORMANCE AUDIOPHILE SERIES

Combining a sleek exterior with innovative technology, Premier Collection (PC) speakers express the natural character, timbre and ambiance of recorded sound, whether you're listening to a classic cello performance or an action-packed Hollywood blockbuster. PC speakers deliver unmatched realism and clarity so convincing, you'll feel like a part of the action.

While Premier Collection speakers can outfit a top of the line home theater system, they were originally developed for our first love, two-channel stereo music. PC series speakers reproduce music so accurately you will feel like you're front row center at the greatest concert hall in the world.

The recording dictates which signal is sent to each speaker, where our Absolute Phase® crossovers route sound to a particular driver. Absolute Phase ensures that each driver will produce only the frequencies for which it was designed, while also keeping the drivers electrically and acoustically in phase with one another.

Engineering our flagship line didn't end with crossovers, however. To create a speaker capable of producing top of the line audiophile-quality sound in any environment, the Premier Collection needed unparalleled drivers capable of accelerating quickly to high acoustic levels while producing crystal-clear sound at any volume. PC speakers incorporate patented

RPF flat-piston woofers, developed in house by PhaseTech engineers. These innovative woofers utilize a tri-laminate of Kevlar, RPF, and glass fiber that match the speed and accuracy of our soft dome tweeters.

Our commitment to innovation and quality results in speakers you'll enjoy for years to come. Try the Premier Collection and you'll understand what we mean by "The Value of Handcrafted Quality."



2



3



	PC0.5	PC1.5	PC33.5
DESCRIPTION	2-way bookshelf speaker	2-way bookshelf speaker	3-way LCR speaker
TWEETER / MIDRANGE	1" Patented woven synthetic soft dome	1" Patented woven synthetic soft dome	1" Patented woven synthetic soft dome
WOOFER	5.25" Kevlar/glass fiber/RPF™ composite solid piston with NBR surround	6.5" Kevlar/glass fiber/RPF™ composite solid piston with NBR surround	5.25" woofer and midbass Kevlar/glass fiber/RPF™ composite solid piston with NBR surround
FREQUENCY RESPONSE (+/- 3 DB)	58 Hz - 22 kHz	40 Hz - 22 kHz	56 Hz - 22 kHz
SENSITIVITY	88 dB	90 dB	90 dB
IMPEDANCE	4 Ω	4 Ω	4 Ω
RECOMMENDED AMPLIFIER POWER	20 - 120 W	20 - 150 W	20 - 200 W
DIMENSIONS	Height: 11.5" Width: 6.9" Depth: 9.6"	Height: 13.6" Width: 7.9" Depth: 12.3"	Height: 6.9" Width: 18" Depth: 9.6"



	PC3.5	PC9.5	PC-Surround-II	PC60 CA*
DESCRIPTION	3-way LCR speaker	4-way tower speaker	2-way Switchable bipole/dipole surround speaker	2-way bookshelf speaker
TWEETER / MIDRANGE	1" Patented woven synthetic soft dome, 1.5" soft dome	1" Patented woven synthetic soft dome / 1.5" Patented woven synthetic soft dome	2 x 1" Patented woven synthetic soft dome / 2 x 4" polypropylene	1" Patented woven synthetic soft dome
WOOFER	2 x 6.5" Glass fiber/RPF™ composite solid piston with NBR surround	3 x 6.5" Glass fiber/RPF™ composite solid piston with NBR surround	6.5" Kevlar/glass/fiber/RPF™ composite solid piston with NBR surround	6.5" Kevlar/glass/fiber/RPF™ composite solid piston with NBR surround
FREQUENCY RESPONSE (+/- 3 DB)	36 Hz - 22 kHz	32 Hz - 22 kHz	60 Hz - 22 kHz	60 Hz - 20 kHz
SENSITIVITY	91 dB	91 dB	89 dB	88 dB
IMPEDANCE	4 Ω	4 Ω	4 Ω	4 Ω
RECOMMENDED AMPLIFIER POWER	20 - 250 W	20 - 450 W	20 - 150 W	25 - 100 W
DIMENSIONS	Height: 22" Width: 7.9" Depth: 12.3"	Height: 45.5" Width: 9" Depth: 14.7"	Height: 15.25" Width: 14.5" Depth: 5.25"	Height: 13.25" Width: 8.625" Depth: 8.25"

*Specifications are subject to change

Gloss Black

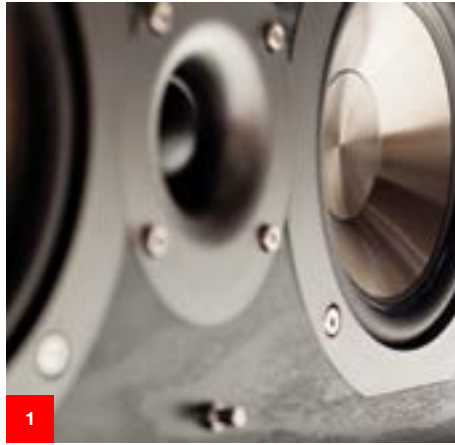
Gloss Black Satin White

Oak Black Oak

Standard color option for PC0.5, PC1.5, PC3.5, PC33.5, PC9.5

Standard color options for PC-Surround-II

Standard color options for PC60 CA

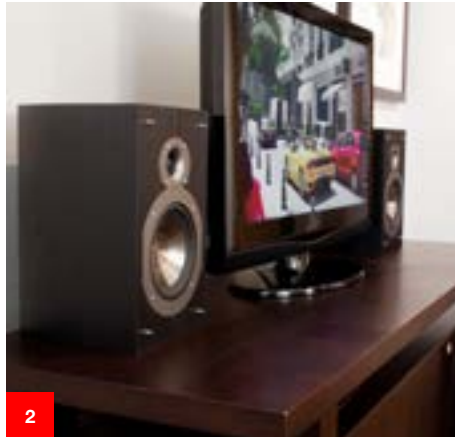


1 - PHASE VELOCITY'S VDT® VAPOR DEPOSITED TITANIUM WOOFERS COMBINE THE INTERNAL DAMPING OF INJECTION MOLDED POLY WITH THE STRENGTH OF TITANIUM.

2 - THE BEAUTY OF PHASE VELOCITY IS THAT ANY OF THE SYSTEM'S SPEAKERS CAN BE COMBINED TO CREATE A VIRTUALLY ENDLESS NUMBER OF SYSTEMS, EACH SOUNDING LIKE IT WAS TAILORED FOR YOUR SPECIFIC USE.

3 - THE V-626 DELIVERS THE DEEPEST AND FULLEST SOUND OF ANY SPEAKER IN THE VELOCITY SERIES WITH A DESIGN THAT MAKES A STRIKING AURAL AND VISUAL STATEMENT.

4 - VELOCITY'S MODERN DESIGN AND GREAT SOUND BEAUTIFULLY COMPLEMENT TODAY'S HOME ENTERTAINMENT ROOMS.



PHASE VELOCITY

SLEEK, STYLISH AUDIOPHILE SPEAKERS

Named for its stylish and streamlined exterior, the Phase Velocity series delivers incredibly accurate audio reproduction. Bookshelf, tower, and on-wall speaker models provide a speaker for every need in any room. The cabinets come in black ash woodgrain laminate, giving them an elegant look that will enhance your home décor.

An alluring speaker means nothing, though, without sound quality to match. The patented soft dome tweeter allows them to reproduce silky-smooth and defined high frequencies and is the perfect complement to the VDT™ Vapor Deposited Titanium woofer. With its low weight and rigid construction, this woofer delivers extraordinary bass and mids to go with its modern look. All

these components work with PhaseTech's signature Absolute Phase® Crossovers to ensure that no matter where you sit, all movie soundtracks and musical selections maintain total clarity, accuracy, and tonal balance.

Whether you are putting together the ultimate home theater that makes a sonic and declarative statement, or a solid, high fidelity music package that seamlessly integrates with today's interior designs, Phase Velocity offers the perfect combination.



4



	V52	V62	V626	V5520	V-Surround-II
DESCRIPTION	2-way bookshelf speaker	2-way bookshelf speaker	3-way tower speaker	2-way LCR speaker	2-way, Switchable bipole/dipole surround speaker
TWEETER / MIDRANGE	1" Patented woven synthetic soft dome	1" Patented woven synthetic soft dome	1" Patented woven synthetic soft dome	1" Patented woven synthetic soft dome	2 x 1" Patented woven synthetic soft dome
WOOFER	5.25" VDT™ with NBR surround	6.5" VDT™ with NBR surround	2 x 6.5" VDT™ with NBR surround	5.25" VDT™ woofer with NBR surround, 5.25" VDT bass radiator	5.25" VDT™ with NBR surround
FREQUENCY RESPONSE (+/- 3 DB)	58 Hz - 20 kHz	45 Hz - 20 kHz	32 Hz - 20 kHz	58 Hz - 20 kHz	70 Hz - 20 kHz
SENSITIVITY	88 dB	88 dB	89 dB	88 dB	88 dB
IMPEDANCE	8 Ω	8 Ω	8 Ω	8 Ω	8 Ω
RECOMMENDED AMPLIFIER POWER	15 - 100 W	15 - 100 W	15 - 150 W	15 - 100 W	15 - 100 W
DIMENSIONS	Height: 10.75" Width: 7.4" Depth: 8.53"	Height: 13.25" Width: 8.25" Depth: 9.53"	Height: 40.5" Width: 8.25" Depth: 9.53"	Height: 7.4" Width: 18" Depth: 8.53"	Height: 9" Width: 11.94" Depth: 4.5"

Black Ash

Standard color options for V52, V62, V626, V552

Black Ash

Satin White

Standard color options for V-Surround-II



CINEMICRO®

A 5.1 HOME THEATER REFERENCE SYSTEM

Selecting all of the speakers needed for a great-sounding home theater system is easy with Phase Technology's CineMicro One—it's a 5.1 home theater speaker system in a single box. This system includes four satellite speakers that function as mains and surrounds, a dual woofer center channel, and one 8" long throw subwoofer.

Each unit comes in a sleek, all wood, black cabinet, with the speakers polished to a glossy sheen, and the subwoofer available in black ash. The CineMicro One's chic look and feel combined with their compact size goes well in any home and will enhance your overall décor. By adding satellites and/or subwoofers, you can easily upgrade your system to a 5.2 or 7.2 configuration.

When designing the CineMicro One, Phase Technology's engineers made audiophile sound quality their top priority. Long throw polypropylene cone woofers with oversized motor structures, large magnets, and 0.75" dome tweeters work together with PhaseTech's signature Absolute Phase® Crossovers to ensure that no matter where you sit— and no matter where your speakers are— you'll feel like you're riding shotgun during that high speed chase, or sitting front and center in that concert hall.



- 1** - THE CINEMICRO SATELLITE INCORPORATES A 3" CONE WOOFER AND .75" DOME TWEETER. A STANDARD SYSTEM COMES WITH FOUR SATELLITES THAT FUNCTION AS MAINS AND SURROUNDS.
- 2** - THE CINEMICRO CENTER CHANNEL FEATURES DUAL WOOFERS FOR IMPROVED DIALOGUE IMPACT. THE SPEAKER CAN FUNCTION AS BOTH A CENTER CHANNEL AND AS AN LCR SPEAKER.
- 3** - THE CINEMICRO ONE SYSTEM INCLUDES ONE 8" LONG-THROW SUBWOOFER FOR ACCURATE, ROOM-FILLING BASS. THE SUB INCLUDES A 200-WATT PEAK SERVO-CONTROLLED AMPLIFIER THAT MONITORS AND ADJUSTS OUTPUT FOR DYNAMIC, UNDISTORTED BASS.
- 4** - CINEMICRO SATELLITES CAN REST ON SHELVES OR TABLETOPS, OR THEY CAN BE MOUNTED ON WALLS USING KEYHOLE-STYLE INSERTS.
- 5** - THE CINEMICRO ONE IS A 5.1 SURROUND SOUND SYSTEM, BUT IS EASILY UPGRADEABLE BY ADDING ADDITIONAL SATELLITES AND/OR SUBWOOFERS.

5



	System*	Center	Satellite
DESCRIPTION	5.1 Home Theater System	2-way LCR speaker	2-way bookshelf speaker
TWEETER / MIDRANGE	.75" dome	.75" dome	.75" dome
WOOFER	3" and 8" polypropylene	2 x 3" polypropylene	3" polypropylene
FREQUENCY RESPONSE (+/- 3 DB)	36 Hz - 20 kHz	110 Hz - 20 kHz	110 Hz - 20 kHz
SENSITIVITY	86 dB	86 dB	86 dB
IMPEDANCE	8 Ω	8 Ω	8 Ω
RECOMMENDED AMPLIFIER POWER	10 - 100 W	10 - 60 W	10 - 60 W
DIMENSIONS		Height: 4.25" Width: 10.25" Depth: 4.75"	Height: 6.75" Width: 4.25" Depth: 4.75"

	HV81
DESCRIPTION	High velocity subwoofer with rear slot loaded port
WOOFER	8" Mineral filled poly cone with NBR surround
PASSIVE RADIATOR	N/A
AMPLIFIER POWER	100 W continuous, 200 W peak
FREQUENCY RESPONSE (+/- 3 DB)	36 Hz - 200 Hz
DIMENSIONS	Height: 14.125" Width: 10.75" Depth: 15.75"

*5.1 system includes 4 satellites, 1 center, and 1 HV81 subwoofer



Standard color option for Center & Satellite



Standard color option for HV81



1 - PC-SUB WL WIRELESS SUBWOOFERS FEATURE DOWNWARD FIRING 10- OR 12-INCH DRIVERS WITH MATCHING FRONT-FIRING PASSIVE RADIATORS.

2 - THE COMBINATION OF AN AUDIOPHILE SUB WITH WIRELESS, UNCOMPRESSED, STREAMING AUDIO INPUTS MAKES THE PC-SUB WL SERIES THE MOST VERSATILE SUBS ON THE MARKET.



SUBWOOFER

SERIOUS BASS RESPONSE

To build a great sound system, you have to start with a solid foundation. Without bass, music just doesn't have the groove. Without bass, movie explosions will sound like firecrackers and car chases will sound like children's toys circling a plastic racetrack. Bass puts the punch in audio. Building a solid subwoofer to produce that punch, however, is easier said than done.

Phase Technology's dedication to innovation and product development has resulted in subs that deliver low-frequency audio with visceral accuracy, while still capable of

handling tremendous power for high-output situations.

Phase Technology subwoofers incorporate rigid, mineral-filled polypropylene drivers and oversized butyl rubber surrounds (the Power FL and PC-Sub WL surrounds are almost twice the size of regular surrounds) to maximize excursion—and thus output—without breaking up or distorting the sound.

Like the conductor of an orchestra, the servo controlled amplifiers lead the output signal of the subs in an undistorted reproduction

of the input signal. This ensures that every sound, every note and every explosion is heard as it was intended by the producer.

Our PC-SUB WL series offers the serious performance of a PhaseTech subwoofer with wireless convenience. Simply attach the system transmitter to the subwoofer out on your receiver and activate the receiver switch on the sub. All you need is a power outlet!

HV SUBWOOFERS

POWER-FL



	HV81	HV101	HV121	POWER-FL8	POWER-FL10	POWER-FL12-II
DESCRIPTION	High velocity subwoofer with rear slot loaded port	High velocity subwoofer with rear slot loaded port	High velocity subwoofer with rear slot loaded port	High performance subwoofer with passive radiator	High performance subwoofer with passive radiator	High performance subwoofer with passive radiator
WOOFER	8" Mineral filled poly cone with NBR surround	10" Mineral filled poly cone with NBR surround	12" Mineral filled poly cone with NBR surround	8" Ultra long-throw mica graphite poly cone with NBR surround	10" Ultra long-throw mica graphite poly cone with NBR surround	12" Ultra long-throw mica graphite poly cone with NBR surround
PASSIVE RADIATOR	N/A	N/A	N/A	8" Ultra long-throw mica graphite poly cone with NBR surround	10" Ultra long-throw mica graphite poly cone with NBR surround	12" Ultra long-throw mica graphite poly cone with NBR surround
AMPLIFIER POWER	100 W continuous, 200 W peak	100 W continuous, 200 W peak	100 W continuous, 200 W peak	250 W continuous, 600 W peak	250 W continuous, 600 W peak	250 W continuous, 600 W peak
FREQUENCY RESPONSE (+/- 3 DB)	36 Hz - 200 Hz	29 Hz - 200 Hz	25 Hz - 200Hz	32 Hz - 150 Hz	26 Hz - 150 Hz	25 Hz - 150 Hz
DIMENSIONS	Height: 14.125" Width: 10.75" Depth: 15.75"	Height: 16.125" Width: 13.75" Depth: 16.75"	Height: 17.25" Width: 15.75" Depth: 18.25"	Height: 14.625" Width: 11.125" Depth: 15.25"	Height: 16.25" Width: 12.5" Depth: 18.5"	Height: 18" Width: 15" Depth: 20.75"

PC-SUB WL



	PC SUB WL-10	PC SUB WL-12
DESCRIPTION	High performance wireless subwoofer with passive radiator	High performance wireless subwoofer with passive radiator
WOOFER	10" Ultra long-throw mica graphite poly cone with NBR surround	12" Ultra long-throw mica graphite poly cone with NBR Surround
PASSIVE RADIATOR	10" Ultra long-throw mica graphite poly cone with NBR Surround	12" Ultra long-throw mica graphite poly cone with NBR Surround
AMPLIFIER POWER	300 W continuous, 900 W peak	300 W continuous, 900 W peak
WIRELESS	2.4 GHz uncompressed audio streaming	2.4 GHz uncompressed audio streaming
FREQUENCY RESPONSE (+/- 3 DB)	24 Hz - 120Hz	22 Hz - 120Hz
DIMENSIONS	Height: 13" Width: 13.375" Depth: 14.5"	Height: 15.5" Width: 16.25" Depth: 16.325"

Gloss Black

Standard color option for PC-Sub WL

Black Ash

Standard color option for HV & Power-FL



SOLARIS® OUTDOOR

EXTREME DURABILITY, AWESOME SOUND

Whether on the front porch or on the pool deck, life happens everywhere, and music makes it even more memorable. To meet the challenges of delivering high-quality music to an open-air setting, Phase Technology has developed the Solaris series of outdoor speakers.

The Solaris® series includes a speaker for every outdoor application. The SPF-55 and SPF-85 easily blend in among flower beds and bushes, while deck and patio areas are serviced by the smaller, mountable models. The SPF-15 includes a proprietary attachment with an indexed swivel-joint for complete hemispherical aiming. The SPF-25 and SPF-35 come with a set of C-clamps that mount to a flat surface; the C-clamps

attach to both ends of the speaker with adjustable knobs allowing the speaker to swivel to an optimal listening angle.

Solaris speakers are built with a high-density resin enclosure that is both paintable (except the SPF-55 and SPF-85) and UV-resistant. Each speaker incorporates water-tight fittings, mineral-filled polypropylene cones with butyl surrounds, and powder-coated aluminum grilles. All hardware uses weather-resistant brass and stainless steel materials. Solaris products will stand up to the elements for years to come.



4



5

- 1** - THE SPF-55 AND SPF-85 COME WITH THEFT RESISTANCE BRACKETS THAT MOUNT DEEP IN THE GROUND FOR EXTRA PROTECTION.
- 2** - DURABILITY IS A HALLMARK OF PHASE TECHNOLOGY OUTDOOR SPEAKERS. OUR SPF-55 AND -85 WITHSTAND WEED WHACKERS AND OTHER OUTDOOR EQUIPMENT. (WE RECOMMEND PARKING THE CAR SOMEWHERE ELSE, THOUGH.)
- 3** - WITH ADJUSTABLE C-CLAMP MOUNTING HARDWARE AND STANDARD OMNI-MOUNT BRACKETS, THE SPF-25 AND SPF-35 CAN BE INSTALLED INDOORS AND OUT.
- 4** - SOLARIS SPEAKERS ARE BUILT OUT OF WEATHER-RESISTANT ALUMINUM, BRASS AND STAINLESS STEEL MATERIALS, ALLOWING THEM TO STAND UP TO YEARS OF WEAR AND TEAR.
- 5** - WITH OMNIDIRECTIONAL SOUND COVERAGE, OUR IN-GROUND SPEAKERS ARE SUITABLE FOR ALMOST ANY OUTDOOR APPLICATION.



	SPF-15	SPF-25	SPF-35	SPF-55	SPF-85
DESCRIPTION	Full range surface-mount speaker	2-way surface-mount speaker	2-way surface-mount speaker	2-way coaxial outdoor speaker	2-way coaxial outdoor speaker
TWEETER	N/A	1" Titanium dome	1" Titanium dome	1" Patented woven synthetic soft dome	1" Patented woven synthetic soft dome
WOOFER	3" Polypropylene with NBR surround	5.25" Polypropylene with NBR surround	6.5" Polypropylene with NBR surround	5.25" Polypropylene with NBR surround	8" Polypropylene with NBR surround
FREQUENCY RESPONSE (+/- 3 DB)	120 Hz - 22 kHz	64 Hz - 20 kHz	48 Hz - 20 kHz	62 Hz - 22 kHz	38 Hz - 22 kHz
SENSITIVITY	85 dB	89 dB	88 dB	85 dB	90 dB
IMPEDANCE	8 Ω	8 Ω	8 Ω	4 Ω	4 Ω
RECOMMENDED AMPLIFIER POWER	10 - 60 W	10 - 100 W	10 - 120 W	15 - 60 W	15 - 100 W
DIMENSIONS	Diameter: 4.35" Depth: 3.81" (including mounting bracket)	Height: 11" Width: 6.75" Depth: 6.25"	Height: 12" Width: 8.75" Depth: 7.75"	Height: 15.1" Diameter: 14.1"	Height: 16.42" Diameter: 14.17"

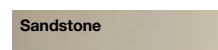
•This product is also sold by SoundTube™ as the SM31-EZ

•This product is also sold by SoundTube™ as the XT550

•This product is also sold by SoundTube™ as the XT850



Standard color options for SPF-15, SPF-25, and SPF-35



Standard color options for SPF-55 and SPF-85

- 1** - OUR UNIQUE PENDANT DESIGN ALLOWS YOU TO PLACE HS SERIES SPEAKERS IN SPACES WHERE TRADITIONAL SPEAKERS WOULDN'T WORK, SUCH AS IN ROOMS WITH WOODEN BEAM CEILINGS.
- 2** - THE HS15 BRINGS A WIDE SOUNDSTAGE TO A TINY 3" DESIGN THAT COMPLEMENTS PENDANT LIGHTS AND OTHER DÉCOR IN BAR AREAS OR THE KITCHEN. AVAILABLE IN BLACK FROM OUR SISTER COMPANY SOUNDTUBE ENTERTAINMENT



PENDANT SPEAKERS

STYLISH OPTIONS FOR OPEN CEILINGS

Have an open or high ceiling? Phase Technology has the answer with our Pendant Series. HS Speakers are available in 3", 4", 6.5" and 8" configurations which suspend the speaker over your listening area. A stylish enclosure finishes the speaker and maximizes the audio quality. HS speakers are ideal for kitchens, bars, workout rooms and patio areas.

Our HS15 is designed to be used in finished ceilings. This 3" speaker incorporates an adjustable 10' length of speaker/signal hanging cable; simply set the cable to the desired length and the rest coils up in the cover plate. The all-in-one ceiling mount system will fit in most junction boxes.

The HS24, HS26 and HS28 (4", 6.5" and 8") are designed for use in open ceilings and are installed via a provided steel cable or by direct conduit mount via the locking cover plate. These units feature our exclusive BroadBeam Ring™ technology which ensures consistent sound quality even well off-axis. Also provided is an easy-access six position rotary switch for 25-, 70.7- and 100-volt applications with a transformer bypass position.

The HS28-LT has the same great features as the HS24, HS26 and HS28 but is designed with our BroadBeamHP™ compression driver for long throw and smooth directivity.



	HS15	HS24	HS26	HS28	HS28-LT
DESCRIPTION	3" Full-range, pendant mount speaker	4" Coax, open-ceiling, ported speaker (20 W transformer for 25/70.7/100 Volt or voice coil direct)	6.5" Coax, open-ceiling, ported speaker (32 W transformer for 25/70.7/100 Volt or voice coil direct)	8" Coax, open ceiling, ported speaker (64 W transformer for 25/70.7/100 Volt or vice coil direct)	8" Coax, open-ceiling, high SPL, ported speaker (64 W transformer for 25/70.7/100 Volt or voice coil direct)
TWEETER	N/A	.75" Silk dome with BroadBeam Ring™	1.0" Silk dome with BroadBeam Ring™	1.0" Silk dome with BroadBeam Ring™	1.4" Compression horn driver
WOOFER	3" Polypropylene with NBR surround	4" Polypropylene with NBR surround	6.5" Polypropylene with NBR surround	8" Polypropylene with NBR surround	8" Treated paper cone with cloth surround
FREQUENCY RESPONSE (+/- 3 DB)	170 Hz - 14 kHz	140 Hz - 22 kHz	100 Hz - 22kHz	100 Hz - 22kHz	110 Hz - 22 kHz
SENSITIVITY	85 dB	87 dB	89 dB	93 dB	93 dB
IMPEDANCE	8 Ω	16 Ω	16 Ω	16 Ω	16 Ω
RECOMMENDED AMPLIFIER POWER	10 - 40 W	10 - 40 W	10 - 64 W	10 - 128 W	10 - 128 W
DIMENSIONS	Height: 3.35" Diameter: 4.35" Height (with stabilizing arm): 5.5"	Height: 7.86" Diameter: 7.46"	Height: 10.4" Diameter: 10.08"	Height: 12.9" Diameter: 12.8"	Height: 12.9" Diameter: 12.83"
	•This product is also sold by SoundTube™ as the RS31-EZ	•This product is also sold by SoundTube™ as the RS42-EZ	•This product is also sold by SoundTube™ as the RS62-EZ	•This product is also sold by SoundTube™ as the RS82-EZ	•This product is also sold by SoundTube™ as the HP82-EZ

White (paintable)

Black

Standard color options for HS15, HS24, HS26, HS28, HS28-LT
Black HS15 available from SoundTube Entertainment



TEATRO[®] SOUNDBAR

HIGH PERFORMANCE AUDIOPHILE SERIES

High-definition flat screen televisions provide amazing video quality, and Phase Technology can match that video with amazing audio. Our soundbars have been designed with precision drivers, Enhanced Voice Technology™ (EVT) circuitry and Spatial Field Expanders™ (SFE). With these technologies, PhaseTech soundbars fill the room with rich sound, add clarity to dialogue, and create a wide soundstage. Left, center and right channels are managed with independent woofers, midranges (PC3.0 only) and tweeters. All models have a passive design for use with your favorite audio entertainment system.

There's no need to enter a menu and manipulate your finely tuned equalization settings – you can quickly and easily

augment only the frequencies associated with human speech intelligibility without worrying about changing the rest of the sound image. The soundbars' EVT circuitry may be turned on and off with the simple flip of a front-panel switch.

SFE technology, on all three soundbar models, utilizes proprietary circuitry and side-mounted drivers to create the effect of speakers that are spaced several feet apart at the front of the room - creating the effect of a huge, wide and rich soundstage right in your living room.

Three models are available to match your desires, aesthetics and budget.

Our newest soundbar, the ultra-thin TSB3.0, presents a sleek profile to match

your TV, measuring only 1.5" deep at the top edge with a total depth of just 2.5". Available with tabletop and wall mount capability, the Teatro TSB3.0 combines ultra-long-throw 3" poly woofers with our signature soft dome tweeters (3/4 inch) in an extruded aluminum, ported, mono-frame cabinet with a powder-coated steel grille. The Teatro PC3.0 (wall mount only) uses 5.25" Kevlar/ glass fiber/ RPF™ composite solid piston drivers, 1.5" dome midranges and 1" synthetic soft dome tweeters, and the Teatro V3.0 (wall mount only) combines 5.25" Vapor Deposited Titanium (VDT™) woofers with 1" soft dome tweeters. The PC3.0 and V3.0 soundbars may be fitted with a custom grille to match the width of your TV.



- 1** - IN ADDITION TO EACH SOUNDBAR'S STANDARD DRIVERS, PHASE TECHNOLOGY'S SPATIAL FIELD EXPANDERS CREATE AN INCREDIBLY WIDE SOUNDSTAGE, CRUCIAL TO A REALISTIC SURROUND SOUND EXPERIENCE.
- 2** - OUR PROPRIETARY EVT (ENHANCED VOICE TECHNOLOGY) SWITCH ENGAGES SPECIFICALLY ENGINEERED CIRCUITRY THAT BOOSTS FREQUENCIES ASSOCIATED WITH HUMAN SPEECH, MAKING QUIET DIALOGUE EASY TO HEAR.
- 3** - THE TEATRO TSB3.0 SOUNDBAR PRODUCES THREE-WAY LEFT, CENTER, AND RIGHT CHANNEL AUDIO FROM A SINGLE CABINET MOUNTED DIRECTLY BELOW THE SCREEN.
- 4** - THE TEATRO V3.0 AND PC3.0 SOUNDBARS CAN BE FITTED WITH CUSTOM GRILLES TO MATCH THE WIDTH OF FLAT PANEL VIDEO SCREENS. CONTACT OUR SALES DEPARTMENT FOR DETAILS.



	TEATRO PC3.0	TEATRO V3.0	TSB3.0
DESCRIPTION	3-way LCR soundbar speaker with EVT™ intelligibility control	2-way LCR soundbar speaker with EVT™ intelligibility control	Ultra Thin LCR Soundbar Speaker with EVT™ Intelligibility control and SFE Spatial Field Expanders
TWEETER / MIDRANGE	3 x 1" Patented woven synthetic soft dome, 3 x 1.5" dome	3 x 1" Patented woven synthetic soft dome	3 x .75" Soft dome
WOOFER	3 x 5.25" Kevlar/glass fiber/RPF™ composite solid piston with NBR surround	3 x 5.25" VDT™ with NBR surround	3 x 3" Polypropylene woofers with rubber surround
ADDITIONAL DRIVERS	Spatial Field Expanders™, 2 x 1.5" patented woven synthetic soft dome	Spatial Field Expanders™, 2 x 1" patented woven synthetic soft dome	Spatial Field Expanders™, 2 x 1" aluminum wide range
FREQUENCY RESPONSE (+/- 3 DB)	52 Hz - 22 kHz	55 Hz - 22 kHz	75 Hz - 20 kHz
SENSITIVITY	89 dB	91 dB	90 dB
IMPEDANCE	4 Ω	4 Ω	8 Ω
RECOMMENDED AMPLIFIER POWER	15 - 150 W	15 - 120 W	15 - 100 W
DIMENSIONS	Height: 7" Width: 40" Depth: 4.5"	Height: 7" Width: 40" Depth: 4.5"	Height: 6.75" Width: 43" Depth: 1.5" (where it meets the television)



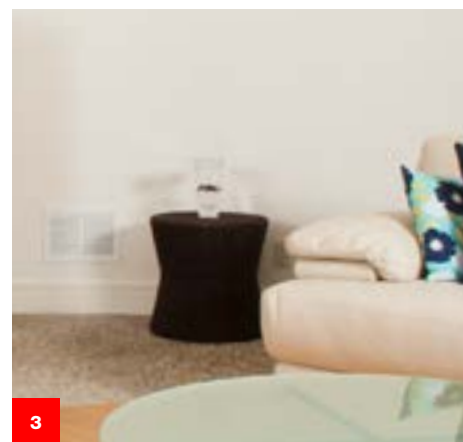
Standard color options for PC3.0.



Standard color option for V3.0



Standard color option for TSB3.0



FLUSH-MOUNT IN-CEILING AND IN-WALL SPEAKERS

With today's active lifestyles, your home serves many purposes. This often means limited choices for placing cabinet speakers. An efficient, practical, and common solution is in-ceiling or in-wall installation.

Phase Technology's Custom Installation series includes a variety of models for any application. In-ceiling, in-wall, two-way, three-way, glass fiber woofers, polypropylene, RPF flat-piston: the choice depends on your tastes, your listening room, and your budget.

Our optional microflange only exposes .25" of the speaker's flange, allowing your speaker to blend seamlessly with your ceiling. There are even dual-voice coil, dual-tweeter models that can perform as mono, stereo, bipole, or dipole speakers, giving

you plenty of options in designing your home theater.

Phase Technology's Professional Series offers exceptional performance and power handling at a lower cost for discreet in-ceiling or in-wall applications. Each model features high sensitivity to assure satisfying volume, even with low-powered distribution systems.

The Professional Series comprises two-way models including 5.25", 6.5", or 8" polypropylene cones with butyl-rubber surrounds for lasting performance, indoors or out. Each speaker is engineered to handle the dynamic range of both stereo and multichannel audio sources, delivering high-end tonal balance with a crisp, clear articulation.

For listeners who want more output or extended bass response, but still want inconspicuous flush-mount speakers, Phase Technology makes in-wall subwoofers with integrated enclosures and companion amplifier/crossover components to deliver a fuller, more dramatic sound.



4



5



6

- 1** - PHASE TECHNOLOGY'S CS-MICRO SPEAKERS COME STANDARD WITH MICROFLANGE GRILLES THAT GIVE YOUR INSTALLATION A SMOOTH FINISH.
- 2** - SPACIA'S CI-MM3-II WORKS ANYWHERE TO FILL SPACES WITH SOUND, PROVIDING A SMOOTH AUDIO TRANSITION FROM ROOM TO ROOM.
- 3** - IS IT AN AIR RETURN OR A SPEAKER? SUBWOOFERS CAN HIDE IN THE WALL OR FLOOR, WITH DISGUISED GRILLES.
- 4** - BRING YOUR FAVORITE MUSIC TO ANY ROOM IN THE HOME WITH EFFICIENT IN-CEILING INSTALLATION.
- 5** - PLACE YOUR AUDIO EXACTLY WHERE YOU NEED IT, WHETHER IT BE AN ENTERTAINMENT CENTER OR PLAY ROOM.
- 6** - IN-WALL SPEAKERS ALLOW YOU TO SET UP SPEAKERS AT THE PERFECT LISTENING HEIGHT WITHOUT TAKING UP FLOOR SPACE.



1

1 - KITCHEN WORKSPACES DON'T HAVE TO BE LEFT OUT OF YOUR SOUND SYSTEM. SPACIA SPEAKERS FIT RIGHT IN NO MATTER WHERE YOU NEED AN EXTRA AUDIO BOOST.

2 - ALL CI IN-CEILING SPEAKERS ARE MANUFACTURED WITH THE NEW CI-FGR QM QUICK MOUNT SAFETY-LOC™ SYSTEM, MAKING INSTALLATION THE EASIEST YOU'VE EVER DONE.



2

SPACIA SERIES



CI-MM3-II	
DESCRIPTION	In-wall full range speaker
WOOFER	3" polypropylene with NBR surround
FREQUENCY RESPONSE (+/- 3 DB)	110 Hz - 20 kHz
SENSITIVITY	88 dB
IMPEDANCE	8 Ω
RECOMMENDED AMPLIFIER POWER	10 - 60 W
DIMENSIONS	Height: 4.1" Width: 4.1" Depth: 1.9" Fits standard outlet double gang box or mud ring

•This product is also sold by SoundTube™ as the RF31-EZ

CS-MICRO SERIES



	CS-6R/Micro	CS-6DVT/Micro	CS-8R/Micro
DESCRIPTION	2-way in ceiling speaker with Microflange grille	2-way in-ceiling switchable bipole/dipole, dual voice coil speaker with Microflange grille	2-way in-ceiling speaker with Microflange grille
TWEETER	.75" pivoting dome	2 x .75" dome tweeter	.75" pivoting dome
WOOFER	6.5" Coaxial polypropylene with NBR surround	6.5" Dual voice coil coaxial polypropylene with NBR surround	8" Coaxial polypropylene with NBR surround
FREQUENCY RESPONSE (+/- 3 DB)	55 Hz - 20 kHz	55 Hz - 20 kHz	48 Hz - 20 kHz
SENSITIVITY	90 dB	90 dB	90 dB
IMPEDANCE	8 Ω	8 Ω	8 Ω
RECOMMENDED AMPLIFIER POWER	5 - 100 W	5 - 100 W	10 - 120 W
DIMENSIONS	Diameter: 9.5" Depth: 3.4" Cutout Diameter: 8.125" Mounting Depth: 2.875"	Diameter: 9.5" Depth: 3.625" Cutout Diameter: 8.125" Mounting Depth: 3"	Diameter: 10.75" Depth: 3.875" Cutout Diameter: 9.5" Mounting Depth: 3.375"

White Almond

Standard grille colors for CI-MM3-II

White (Paintable)

Standard grille color for all Micros

IN-CEILING CUSTOM INSTALLATION



	CI6.0 IX QM	CI6.1 VIII QM	CI6.2s VIII QM	CI7.3 VIII QM
DESCRIPTION	2-way coaxial in-ceiling speaker	2-way in-ceiling speaker	2-way switchable mono/stereo/bipole/dipole in-ceiling speaker and surround	3-way in-ceiling speaker
TWEETER / MIDRANGE	1" Pivoting patented woven synthetic soft dome	1" Pivoting patented woven synthetic soft dome	2 x .75" dome	1" Pivoting patented woven synthetic soft dome / 1.5" soft dome
WOOFER	6.5" Polypropylene with NBR surround	6.5" Woven glass fiber with NBR surround	6.5" Woven glass fiber with NBR surround	7" Woven glass fiber with NBR surround
FREQUENCY RESPONSE	55 Hz - 20 kHz (+/- 3 dB)	40 Hz - 22 kHz (+/- 3 dB)	45 Hz - 20 kHz (+/- 3 dB)	38 Hz - 22 kHz (+/- 3 dB)
IMPEDANCE	8 Ω	8 Ω	8 Ω	8 Ω
RECOMMENDED AMPLIFIER POWER	10 - 120 W	10 - 150 W	10 - 100 W	15 - 200 W
DIMENSIONS	Diameter: 9.63" Depth: 4.6" Cutout Diameter: 8.375" Mounting Depth: 4"	Diameter: 9.63" Depth: 4" Cutout Diameter: 8.375" Mounting Depth: 4"	Diameter: 9.63" Depth: 4" Cutout Diameter: 8.375" Mounting Depth: 4"	Diameter: 9.63" Depth: 4" Cutout Diameter: 8.375" Mounting Depth: 4"
WEIGHT	2.75 lbs.	4.75 lbs.	3.75 lbs.	4.75 lbs.



	CI1.5*	CI520*	CI620*	CI820*
DESCRIPTION	In-ceiling full range speaker with integrated metal backcan and bypassable 25/70/100 V transformer	2-way in-ceiling speaker with integrated metal backcan and bypassable 25/70.7/100-V transformer	2-way in-ceiling speaker with integrated metal backcan and bypassable 25/70.7/100-V transformer	2-way in-ceiling speaker with integrated metal backcan and bypassable 25/70.7/100-V transformer
TWEETER / MIDRANGE	N/A	.75" Patented woven synthetic soft dome with BroadBeam Ring™	1" Patented woven synthetic soft dome with BroadBeam Ring™	1" Patented woven synthetic soft dome with BroadBeam Ring™
WOOFER	3" Polypropylene with NBR surround	5.25" polypropylene with NBR surround	6.5" polypropylene with NBR surround	8" polypropylene with NBR surround
FREQUENCY RESPONSE	135 Hz - 22 kHz (+/- 5 dB)	65 Hz - 22 kHz (+/- 5 dB)	60 Hz - 20 kHz (+/- 5 dB)	55 Hz - 20 kHz (+/- 5 dB)
IMPEDANCE	8 Ω	16 Ω	16 Ω	16 Ω
RECOMMENDED AMPLIFIER POWER	10 - 60 W	10 - 80 W	10 - 80 W	10-100 W
DIMENSIONS	Diameter: 6.3" Depth: 4.25" Cutout Diameter: 5.5" Mounting Depth: 3.5"	Diameter: 11.75" Depth: 5.75" Cutout Diameter: 10.5" Mounting Depth: 6.09"	Diameter: 11.75" Depth: 5.75" Cutout Diameter: 10.5" Mounting Depth: 6.09"	Diameter: 11.75" Depth: 8" Cutout Diameter: 10.5" Mounting Depth: 8.34"
WEIGHT	3.1 lbs. •This product is also sold by SoundTube™ as the IW31-EZ	8 lbs. •This product is also sold by SoundTube™ as the CM52-BGM	8 lbs. •This product is also sold by SoundTube™ as the CM62-BGM	9 lbs. •This product is also sold by SoundTube™ as the CM82-BGM

*UL1480 listed

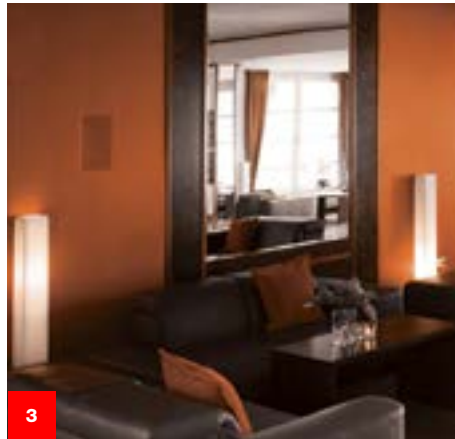


1

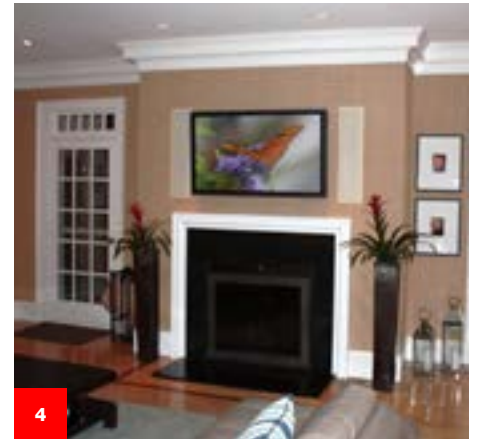


2

- 1 - CREATE A STUNNING ATMOSPHERE OF HIGHLY DEFINED MUSIC FROM VERY COMPACT SPEAKERS THAT CLOSELY RESEMBLE HOUSEHOLD ELECTRICAL WALL PLATES AND HEATING SYSTEM FLOOR REGISTERS.
- 2 - DUAL TWEETERS AND A FLEXIBLE BIPOLE/ DIPOLE DESIGN MAKE CI SURROUNDS A NATURAL FIT IN ANY AUDIO SYSTEM.
- 3 - PAINTABLE GRILLES ALLOW CI IN-WALLS TO BLEND IN TO ANY INSTALLATION.
- 4 - THE CI-150 COMBINES ALL YOUR LEFT, CENTER AND RIGHT FRONT CHANNELS INTO TWO IN-WALL CABINETS.



3



4

IN-WALL CUSTOM INSTALLATION

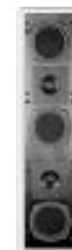


	CI15*	CI20 VIII	CI60 VII
DESCRIPTION	In-wall full range speaker with integrated metal backcan and bypassable 25/70/100 V transformer	2-way in-wall speaker	2-way in-wall speaker
TWEETER / MIDRANGE	N/A	1" Pivoting patented woven synthetic soft dome	1" Pivoting patented woven synthetic soft dome
WOOFER	3" Polypropylene with NBR surround	6.5" Polypropylene with NBR surround	6.5" RPF™ flat-piston with NBR surround
FREQUENCY RESPONSE	135 Hz - 22 kHz (+/- 5 dB)	48 Hz - 20 kHz (+/- 3 dB)	40 Hz - 22 kHz (+/- 3 dB)
IMPEDANCE	8 Ω	8 Ω	8 Ω
RECOMMENDED AMPLIFIER POWER	10 - 60 W	10 - 120 W	10 - 150 W
DIMENSIONS	Height: 5" Width: 5" Depth: 4.125" Cutout Height: 4.35" Cutout Width: 4.35" Mounting Depth: 3.5"	Height: 11.81" Width: 8.63" Depth: 3.65" Cutout Height: 10.75" Cutout Width: 7.5" Mounting Depth: 3.25"	Height: 11.81" Width: 8.63" Depth: 3.9" Cutout Height: 10.75" Cutout Width: 7.5" Mounting Depth: 3.5"
WEIGHT	3.1 lbs.	3.75 lbs.	4.75 lbs.

*UL1480 listed

•This product is also sold by SoundTube™ as the CM31-EZ

IN-WALL CUSTOM INSTALLATION



	CI70 VIII	CI72 VIII	CI-SURR	CI110 II	CI150
DESCRIPTION	3-way in-wall speaker	2-way in-wall speaker	2-way, Switchable bipole/dipole stereo/mono in-wall and surround speaker	2.5-way in-wall speaker with patented positive clamping mounting system	2-way in-wall produces 3 front channels from 2 speakers with patented positive clamping mounting system. Comes with integrated metal backbox
TWEETER / MIDRANGE	1" Pivoting patented woven synthetic soft dome / 1.5" soft dome	1" Pivoting patented woven synthetic soft dome	2 x 1" Patented woven synthetic soft dome	1" Pivoting patented woven synthetic soft dome	2 x 1" Pivoting patented woven synthetic soft dome
WOOFER	7" Woven glass fiber with NBR surround	7" Woven glass fiber with NBR Surround	6.5" Woven glass fiber with NBR surround	2 x 6.5" RPF™ flat-piston and Kevlar composite with NBR surround	2 x 5.25" RPF flat piston Kevlar composite, 1 x 5.25" RPF flat piston passive radiator, all with NBR surround
FREQUENCY RESPONSE	35 Hz - 22 kHz (+/- 3 dB)	35 Hz - 20 kHz (+/- 3 dB)	45 Hz - 20 kHz (+/- 3 dB)	32 Hz - 22 kHz (+/- 3 dB)	70 Hz - 22 kHz (+/- 3 dB)
IMPEDANCE	8 Ω	8 Ω	8 Ω	8 Ω	4 Ω
RECOMMENDED AMPLIFIER POWER	15 - 200 W	10 - 150 W	10 - 150 W	20 - 250 W	15 - 200 W
DIMENSIONS	Height: 11.81" Width: 8.63" Depth: 3.9" Cutout Height: 10.75" Cutout Width: 7.5" Mounting Depth: 3.5"	Height: 11.81" Width: 8.63" Depth: 3.9" Cutout Height: 10.75" Cutout Width: 7.5" Mounting Depth: 3.5"	Height: 11.81" Width: 8.63" Depth: 3.9" Cutout Height: 10.75" Cutout Width: 7.5" Mounting Depth: 3.5"	Height: 21.5" Width: 10" Depth: 4.25" Cutout Height: 20.375" Cutout Width: 8.875" Mounting Depth: 4"	Height: 31.375" Width: 8.125" Depth: 4.25" Cutout Height: 30.375" Cutout Width: 7" Mounting Depth: 3.875"
WEIGHT	4.75 lbs.	3.75 lbs.	3.75 lbs.	21 lbs.	18.5 lbs.

SUBWOOFER



	IW200* **
DESCRIPTION	In-wall subwoofer with sealed enclosure
WOOFER	2 x 8" mica-graphite polypropylene with NBR surround
AMPLIFIER POWER	350 W peak
FREQUENCY RESPONSE (+/- 3 DB)	25 Hz - 160 Hz
MOUNTING	Enclosure mounts between 16" on-center 2" x 4" studded wall

* Requires P350 subwoofer amp
** Requires enclosure box IW EB 200

White (Paintable)

Standard grille color for IW-200

AMPLIFIER



	P350
DESCRIPTION	P350 Class-G high current subwoofer/ full range mono block amplifier
AMPLIFIER POWER	350 W RMS @ 4 Ohms, 700 W peak 225 W RMS @ 8 Ohms, 400 W peak
CROSSOVER FREQUENCY	Low Pass 40 - 120 Hz adjustable @ 24 dB/octave
LFE FREQUENCY RESPONSE	20 - 500 Hz
FULL RANGE RESPONSE	10 Hz - 20 kHz +0/-25 dB, 5-60 kHz +0/-3 dB
LOW FREQUENCY EQ	-3 dB to +6 dB @ 30 Hz
MAX CURRENT CONSUMPTION 120V	3A @ 8 ohms, 5.5A @ 4 ohms continuous
DIMENSIONS	Height: 2" Width: 17.25" Depth: 13.25"

dARTS

UNIFORM SOUND FOR EVERY SEAT

For centuries humanity has known that a room's acoustic character has a dramatic effect on how sound will be perceived. The acoustic problems this can cause are magnified in the world of sound reproduction. Reflections from hard surfaces and resonant modes will color every speaker's performance, no matter how expensive it is.

Phase Technology's engineers knew that modern technology could theoretically eliminate the effects of room acoustics on a speaker's performance, but they also knew making theory a reality would be a daunting task.

To meet the challenge, they started from the ground up, developing new components and technologies to create the speaker system of the future. After more than fifteen years of experimentation and development, the revolutionary Digital Audio Reference Theater System (dARTS) was introduced. This system delivers multi-channel audio speakers built to the tightest tolerances in the industry, with signal processing capable of making any room sound as good as the greatest theater.

Knowing we needed to perfectly match a complete multi-channel home theater

system's speakers, we engineered all new drivers, utilizing manufacturing tolerance much tighter than any previously employed. Our efforts resulted in three-layer composite glass fiber/ nomex honeycomb/ glass fiber drivers—the best we've ever built.

To control all the various performance attributes of the speakers, we developed the DP-2000 and now the DP-4000, a completely new digital programmable amplifier. The amp manages the entire system with 16 channels of digital signal processing (DSP) and amplification. Each channel controls the crossover, time alignment, and equalization while delivering up to 250 watts of amplification to each individual driver (woofer, midrange, or tweeter). By using digital control in an active bi- and tri-amplified configuration we are able to achieve previously unreachable levels of accuracy and performance.

Each dARTS system is custom-programmed and leaves our factory software-tuned with each speaker matching a target response curve within an inaudible +/- 0.5 dB.

In order to have predictable results in any room we partnered with Audyssey Laboratories®, the inventors of a computerized system called MultEQ XT.

MultEQ XT analyzes a room's acoustics from multiple locations and based on the measurements, calculates an equalization solution that corrects for both time and frequency response problems throughout the listening area.

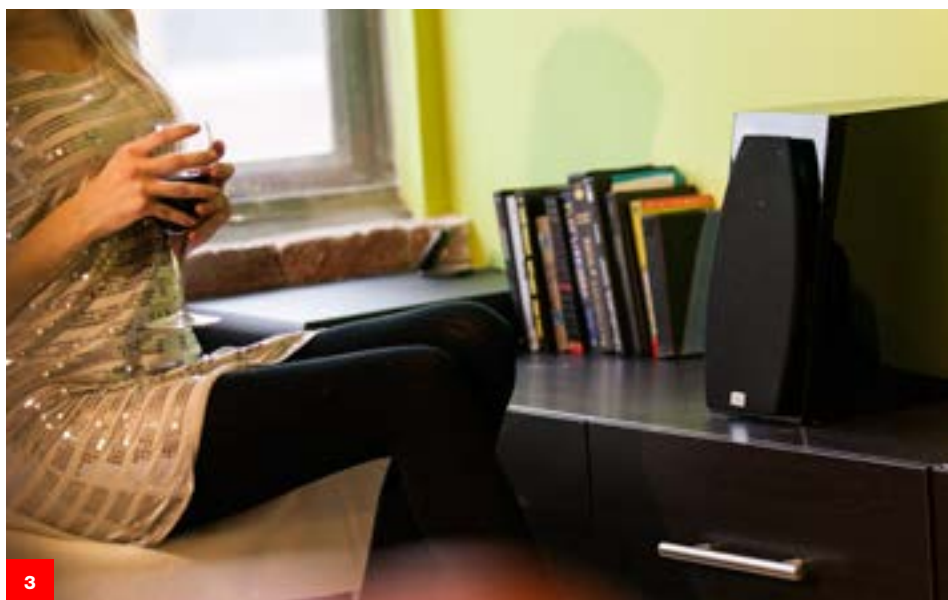
When your trained dARTS installer sets up the dARTS system in your room, he uses proprietary MultEQ XT PRO software with a calibrated microphone and digital interface to measure the acoustic properties of your room throughout the listening area. The acoustic properties of your room are then used to create a set of custom correction filters that are stored in the DP-4000. The result is a sound reproduction system that's perfectly matched and is restored to its target response curve, just as it was when it left our factory. This performance can be achieved in virtually any type of room – large or small, bright or absorbent, open or enclosed – so you are assured of realistic, dynamic sound throughout your listening area. Your "sweet spot" now becomes the whole seating area!



1



2



3



4

1 - CUSTOM BUILT dARTS SPEAKERS CAN BE INCREASED IN SIZE AND DRIVER CONFIGURATIONS TO PRODUCE THEATRICAL REFERENCE LEVELS IN ANY SIZE SPACE.

2 - BY USING DIGITAL CONTROL IN A BI- AND TRI-AMPLIFIED CONFIGURATION, dARTS SPEAKERS ARE ABLE TO ACHIEVE PREVIOUSLY UNREACHABLE LEVELS OF ACCURACY AND PERFORMANCE.

3 - FREESTANDING dARTS SPEAKERS FEATURE SOFT CURVES AND SLOPING SURFACES IN A HIGH GLOSS BLACK PIANO FINISH.

4 - AVAILABLE IN EITHER IN-WALL OR ON-WALL MODELS, dARTS SURROUND SPEAKERS TRULY IMMERSE YOU IN A MUSICAL SCORE OR MOVIE SOUNDTRACK. ON-WALL MODELS CAN BE CUSTOM BUILT TO FIT ANY CABINET.

5 - EACH SPEAKER IS BROUGHT INTO OUR LAB WHERE CUSTOM SOFTWARE IS WRITTEN FOR EACH DRIVER. DSP BASED CALIBRATION IS EMPLOYED AFTER INSTALLATION TO ENSURE A PERFECT MATCH TO ANY ROOM'S SONIC SIGNATURE.



5

525 SERIES CUSTOM BOX DP1051CB

Custom-Built dARTS speakers are built in painted black enclosures suitable for placement in cabinets or behind perforated projection screens. The cabinets can be custom-built for uniquely shaped mounting locations.



DCB-525-LR



DCB-525-C



DCB-525-LR



DCB-525-SURR



DCB-525-SURR



DCB-112-SUB

650 SERIES CUSTOM BOX DP2051CB

Custom-Built dARTS speakers can be increased in size and driver configurations to produce theatrical reference levels in any size space. Speakers can be customized in size and shape to fit within oddly shaped spaces.



DCB-1.0-LR



DCB-5.0-C



DCB-1.0-LR



DCB-SURR



DCB-SURR



DCB-210-SUB

525 SERIES IN-WALL DP1051IW

In-wall dARTS incorporate the same driver configuration as the CB models, but mount flush with the wall for a seamless look. IW 525 Series speakers will produce a minimum SPL of 105 dB (THX™ reference level) in an 8,000 cubic foot room.



DIW-525-LCR



DIW-525-LCR



DIW-525-LCR



DIW-525-SURR



DIW-525-SURR



DCB-115-SUB

650 SERIES IN-WALL DP2051IW

An IW Series dARTS system includes in-wall LCR speakers and on-wall surrounds. IW Series speakers are completely hidden behind the included grilles. IW 650 Series speakers will produce a minimum of 105 dB in an 18,000 cubic foot room.



DIW-1.0-LCR



DIW-1.0-LCR



DIW-1.0-LCR



DIW-SURR



DIW-SURR



DCB-210-SUB

525 SERIES FREESTANDING DP1051FS

Freestanding dARTS speakers are built into beautifully curved, high gloss cabinets in our own wood shop. 525 Series speakers come in high glass black which will undoubtedly make a bold statement in your room.



DFS-525-LR



DFS-525-C



DFS-525-LR



DCB-525-SURR



DCB-525-SURR



DFS-112-SUB

	DP4000
DESCRIPTION	Class D 16 channel Digital Amplifier/ Controller
NUMBER OF CHANNELS	16
CROSSOVER	DSP based, adaptive
FREQUENCY RESPONSE	20 Hz - 20 kHz; +/- 0.5 dB
HARMONIC DISTORTION	0.05% (@ 1 kHz, 1 W)
VOLTAGE GAIN (DB) S/N	Variable
POWER OUTPUT (CONTINUOUS) 2.5 OHMS \ 4 OHMS \ 8 OHMS	125 w/ch @ 8 Ohms; 250 w/ch @ 4 Ohms
INPUTS	8 balanced (XLR), 16 unbalanced (RCA)
OUTPUT BINDING POSTS	Gold plated binding posts
POWER REQUIREMENTS	120/240v; 50/60 Hz
PROGRAMMING PORT	USB

dARTS AMPLIFIER



DP4000

	DP1051CB	DP1051IW	DP1051FS	DP2051CB	DP2051IW
SYSTEM CONFIGURATION	5.1*	5.1*	5.1*	5.1*	5.1*
SYSTEM FREQUENCY RESPONSE	20 Hz - 30 kHz	20 Hz - 30 kHz	20 Hz - 30 kHz	20 Hz - 30 kHz	20 Hz - 30 kHz
SPECIFIED SUBWOOFER POWER	1500 Watt peak	1500 Watt peak	1500 Watt peak	1500 Watt peak	1500 Watt peak
DIMENSIONS OF MAIN SPEAKER	Height: 12" Width: 12" Depth: 7.5"	Height: 19.25" Width: 14.25" Depth: 3.9"	Height: 11.5" Width: 6.6" Depth: 9.6"	Height: 14" Width: 14" Depth: 9"	Height: 23.5" Width: 14" Depth: 3.5"
DIMENSIONS OF CENTER CHANNEL	Height: 7" Width: 18" Depth: 9.25"	Height: 14.25" Width: 19.25" Depth: 3.9"	Height: 6.6" Width: 18" Depth: 9.6"	Height: 8.25" Width: 18.75" Depth: 12"	Height: 14" Width: 23.5" Depth: 12"
DIMENSIONS OF SURROUND	Height: 15.25" Width: 10.5" Depth: 5"	Height: 19.25" Width: 14.25" Depth: 3.9"	Height: 15.25" Width: 10.5" Depth: 5"	Height: 19.25" Width: 10.5" Depth: 5"	Height: 19.25" Width: 14" Depth: 3.5"
DIMENSIONS OF SUBWOOFER OPTION 1-DCB 112	Height: 15.5" Width: 14.5" Depth: 15"	Height: 15.5" Width: 14.5" Depth: 15"	Height: 15.5" Width: 14.5" Depth: 15"	Height: 15.5" Width: 14.5" Depth: 15"	Height: 15.5" Width: 14.5" Depth: 15"
DIMENSIONS OF SUBWOOFER OPTION 2-DCB 210	Height: 28" Width: 14" Depth: 17"	Height: 28" Width: 14" Depth: 17"	Height: 28" Width: 14" Depth: 17"	Height: 28" Width: 14" Depth: 17"	Height: 28" Width: 14" Depth: 17"
DIMENSIONS OF SUBWOOFER OPTION 3-DCB 115	N/A	N/A	N/A	Height: 19.5" Width: 15.25" Depth: 22.4"	Height: 19.5" Width: 15.25" Depth: 22.4"

* All dARTS systems are expandable to 5.2, 7.1, 7.2 or custom configurations.

Gloss Black

Standard color options for freestanding dARTS speakers

MSE AUDIO

To find a dealer near you:

855.663.5600 | 913.663.5600 | sales@mseaudio.com



AUDIO PERFECTION REALIZED™

Induction Dynamics speakers are engineered to achieve precise sound in any home theater environment and are hand-tuned to exact specifications. This meticulous attention to detail and craftsmanship results in design qualities and system-wide performance unlike any other.



SOUND WITHOUT SPEAKERS™

SolidDrive is the solution for invisible sound, providing a hidden sound source for in-wall, surface mount, and glass applications. Unique technology transforms surfaces into sound-producing planes that blanket whole rooms with music and soundtracks.



ULTRA-FIDELITY OUTDOOR SPEAKERS™

Rockustics offers an extensive line of high-fidelity, all-weather outdoor speakers for both home and commercial applications. Each model is designed to enhance the environment by providing the highest quality sound with unparalleled lifelike aesthetics.



ADVANCING THE SCIENCE OF SOUND™

SoundTube Entertainment designs and manufactures in-wall, in-ceiling, surface-mount, open-ceiling, focused-audio and outdoor speakers for commercial installations worldwide. SoundTube products include several patented technologies for speaker acoustics, design and mounting systems.

REVIEWS

PHASE VELOCITY



“The new version of Phase Technology’s Velocity line is on of the best sets of affordable speakers I’ve ever heard.”

– Home Theater

TEATRO SOUNDBARS



“With movie sound or multichannel music, the Phase Technology Teatro V3.0 system produced a wide soundstage, and an enveloping soundfield with excellent dialogue clarity, bass depth, and dynamic range, blowing away my assumptions.”

– About.com

FLUSH-MOUNT



“Voices—thanks, probably, to that midrange driver—are even clearer than those coming through many conventional speakers. The bass plays deep, much lower than can most small bookshelf speakers. At the same time, the CI-7.3 defines low notes precisely, never rendering them boomy or sloppy.”

– Home Entertainment Magazine

dARTS



“What PhaseTech’s engineers and Audessey’s scientists have achieved is startling. In terms of tonal neutrality - the evenness, balance and natural sound of bass, midrange, and treble - the dARTS system may be the best I have heard.”

– Home Entertainment Magazine

SPEAKERS FOR YOUR LIFE™



P#218-2097SP

MSE AUDIO® [**INDUCTION DYNAMICS**® **PHASE TECHNOLOGY** *Rockustics* Solid Drive **SOUNDTUBE** ENTERTAINMENT]
www.mseaudio.com | 8005 W. 110th Street | Suite 208 | Overland Park, KS 66210 | p:913.663.5600 | f:913.663.3200

888-PHASETK | www.phasetech.com

Copyright © 2014 MS Electronics, LLC.

All rights reserved. MSE Audio®, Phase Technology, dARTS, Rockustics and

“Speakers for your Life” are registered trademarks or trademarks of MS Electronics, LLC.

Phase Technology is part of MSE Audio®, Overland Park, Kansas USA. www.phasetech.com