

EH2100/EH2100P  
Ceiling  
Enclosures

Installation/  
Operation Manual

C407M Rev B (9/97)

---

---

# CONTENTS

---

---

<u>Section</u>	<u>Page</u>
1.0 GENERAL .....	1
1.1 IMPORTANT SAFEGUARDS AND WARNINGS .....	1
1.1 UNPACKING INSTRUCTIONS .....	2
2.0 DESCRIPTION .....	3
2.1 MODELS .....	3
2.2 OPTIONS .....	3
3.0 INSTALLATION .....	4
3.1 INSTALLATION, FIXED CEILING .....	4
4.0 MAINTENANCE .....	5
5.0 EXPLODED ASSEMBLY DIAGRAM .....	6
6.0 SPECIFICATIONS .....	8
7.0 WARRANTY AND RETURN INFORMATION .....	10

## LIST OF ILLUSTRATIONS

<u>Figure</u>	<u>Page</u>
1     Exploded Assembly Diagram .....	6
2     Dimension Drawing .....	9

## LIST OF TABLES

<u>Table</u>	<u>Page</u>
A     Exploded Assembly Parts List .....	7

### 1.1 IMPORTANT SAFEGUARDS AND WARNINGS

Prior to installation and use of this product, the following WARNINGS should be observed.

1. Installation and servicing should only be done by Qualified Service Personnel and conform to all Local codes.
2. Unless the unit is specifically marked as a NEMA Type 3, 3R, 3S, 4, 4X, 6 or 6P enclosure, it is designed for Indoor use only and it must not be installed where exposed to rain and moisture.
3. Use only installation methods and materials capable of supporting four times the combined weight of the enclosure/pan and tilt/camera/lens.
4. Only use replacement parts recommended by Pelco.
5. The camera and lens combination shall not exceed 10 lbs.
6. After replacement/repair of this unit's electrical components, conduct a resistance measurement between line and exposed parts to verify the exposed parts have not been connected to line circuitry.

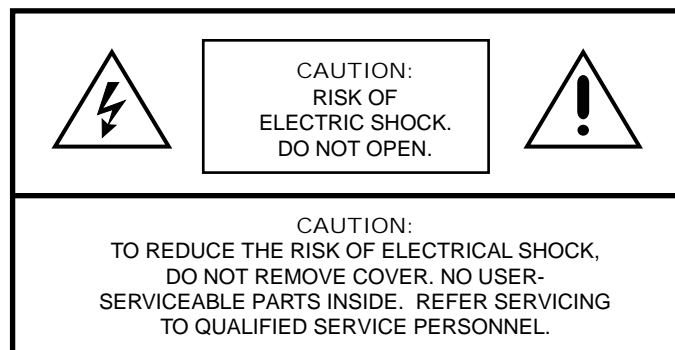
The product and/or manual may bear the following marks:



This symbol indicates that dangerous voltage constituting a risk of electric shock is present within this unit.



This symbol indicates that there are important operating and maintenance instructions in the literature accompanying this unit.



Please thoroughly familiarize yourself with the information in this manual prior to installation and operation.

## 1.1 UNPACKING INSTRUCTIONS

Unpack and inspect all parts carefully.

Be sure to save the shipping carton and any inserts. They are the safest material in which to make future shipments.

If an items appears to have been damaged in shipment, replace it properly in its carton and contact the factory at 1-800-289-9100 or 1-209-292-1981 for a replacement. (International customers fax 1-209-348-1120 for authorization and instructions.)

If an item needs to be returned to the factory for repair, consult the WARRANTY AND RETURN section of this manual for instructions.

---

---

## 2.0 DESCRIPTION

---

---

The EH2100 and EH2100P are low-profile ceiling enclosures designed for mounting in fixed or dropped ceilings. The unobtrusive, compact design complements any business or office decor and provides maximum surveillance for fixed applications when using the new solid-state CCD cameras on the market today. The upper section mounted above the ceiling is constructed of aluminum and has been found suitable for use in return air handling plenums by Underwriters Laboratories, Inc.

The EH2100/EH2100P are engineered for ease of installation and service. Because of its light-weight design, the upper section can be mounted directly on a ceiling tile without the use of added mounting plates. A clear window provides for a discreet installation.

The lower section is hinged to provide convenient access for adjusting the camera and lens. The adjustable camera mounting sled allows the camera to be positioned vertically or horizontally, depending on the camera size.

### 2.1 MODELS

EH2100	Low profile ceiling enclosure for solid-state CCD cameras designed for mounting in fixed or dropped ceiling. Riveted back box.
EH2100P	Low profile ceiling enclosure for solid-state CCD cameras designed for mounting in fixed or dropped ceiling. Fully welded and sealed back box.

### 2.2 OPTIONS

E2100	360° rotating mounting plate with locking capability. Mounts in 2' x 2' (0.61 m x 0.61 m) or 2' x 4' (0.61 m x 1.22 m) ceiling tiles.
-------	---

---

---

## 3.0 INSTALLATION

---

---

### 3.1 INSTALLATION, FIXED CEILING

To mount the EH2100/EH2100P directly into a fixed ceiling, perform the following steps:

1. Determine the location and direction of the enclosure to be mounted. Ideally, the enclosure cutout should be parallel and adjacent, or perpendicular, to any ceiling structure. Avoid cutting into any ceiling structural members.
2. Open the cover of the enclosure to expose the mounting holes in the flange.
3. Remove any appropriate knockouts.
4. Insert the enclosure into the opening and secure with the appropriate fasteners.
5. Mount the camera/lens onto the adjustable mounting bracket. Adjust the position of the camera/lens to clear the enclosure cover when closed. Tighten the mounting bracket fasteners.
6. Route the appropriate cables into the enclosure. Make all necessary electrical connections.
7. Close and lock the cover.

NOTE: *The EH2100P must have feedthrough holes drilled in locations needed and appropriate hardware attached for plenum standards.*

NOTE: *Back-up flanges have been supplied to support the enclosure if adequate mounting support is not available or if enclosure is mounted in "drop ceiling" tiles.*

---

---

## 4.0 MAINTENANCE

---

---

Regularly scheduled maintenance will prolong the operational life and appearance of the equipment.

Clean the outer surface of the enclosure and the inner surface of the viewing window with a nonabrasive cleaning cloth and antistatic cleaner that is safe for use on acrylic plastic. Do not use kerosene or similar substances that can scratch the surface.

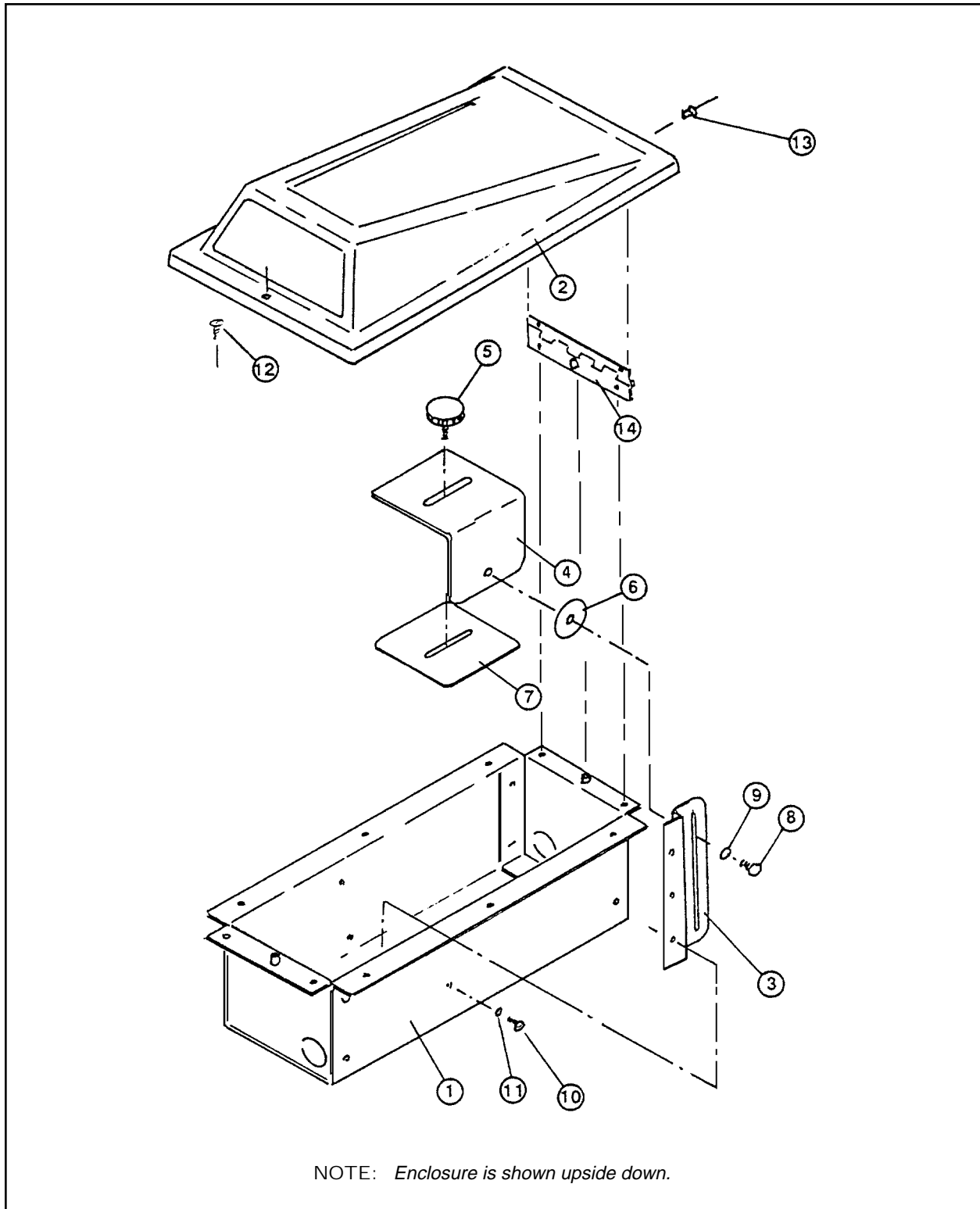
---

---

## 5.0 EXPLODED ASSEMBLY DIAGRAM

---

---



**Figure 1.** Exploded Assembly Diagram



**Table A.** Exploded Assembly Parts List

Item	Qty	Description	Part Number
1	1	Back box assembly* Model EH2100 Model EH2100P	EH20101000ASSY EH20201000ASSY
2	1	Cover, ceiling enclosure	EH201011000
3	1	Bracket, mounting, cradle	EH20104101COMP
4	1	Camera cradle	EH20104102COMP
5	1	Screw, camera mount, 1/4-20X.500, knob	P10000
6	1	Clutch	PS710000
7	1	Camera pad	EH200010004
8	1	Screw 1/4-20 x 1/2" hex cad	ZH1/4-20X.500CH
9	1	Washer, internal star 1/4", stainless steel	ZH1/4LWSIS
10	4	Screw 6-32 x 1/4" pan phil, stainless steel	ZH6-32X,250SPP
11	4	Washer, internal star #6, stainless steel	ZH6LWSIS
12	1	Screw, 8-32X.375, button head cad	ZH8-32X.375CRS
13	2	Rivet, pop head aluminum	ZHRIVIT1/8X1/4P
14	1	Hinge	EH20104103COMP
15	2	Hex nut, 6-32 SS (not shown)	ZH6-32NUTSH
16	2	Flange, extender (not shown)	EH20004005COMP
*Includes hinge, item #14			

---

---

## 6.0 SPECIFICATIONS

---

---

### MECHANICAL

Camera Mounting: Adjustable camera sled (vertical or horizontal)

Maximum  
Camera/Lens

Size: Accepts camera/lens combinations up to:  
3" H x 10" L x 4" W (7.62 cm x 25.4 cm x 10.16 cm)

Ceiling Mounting: Upper section flange-mounted to fixed ceiling or ceiling tile

Viewing Window: Clear acrylic window

Cable Entry: Conduit knockouts (EH2100 only)

Lock: Philips head screw

### GENERAL

Construction

Upper section: 5052-H32 aluminum

Lower section: Vacuum-formed ABS plastic (U.L. listed material)

Color

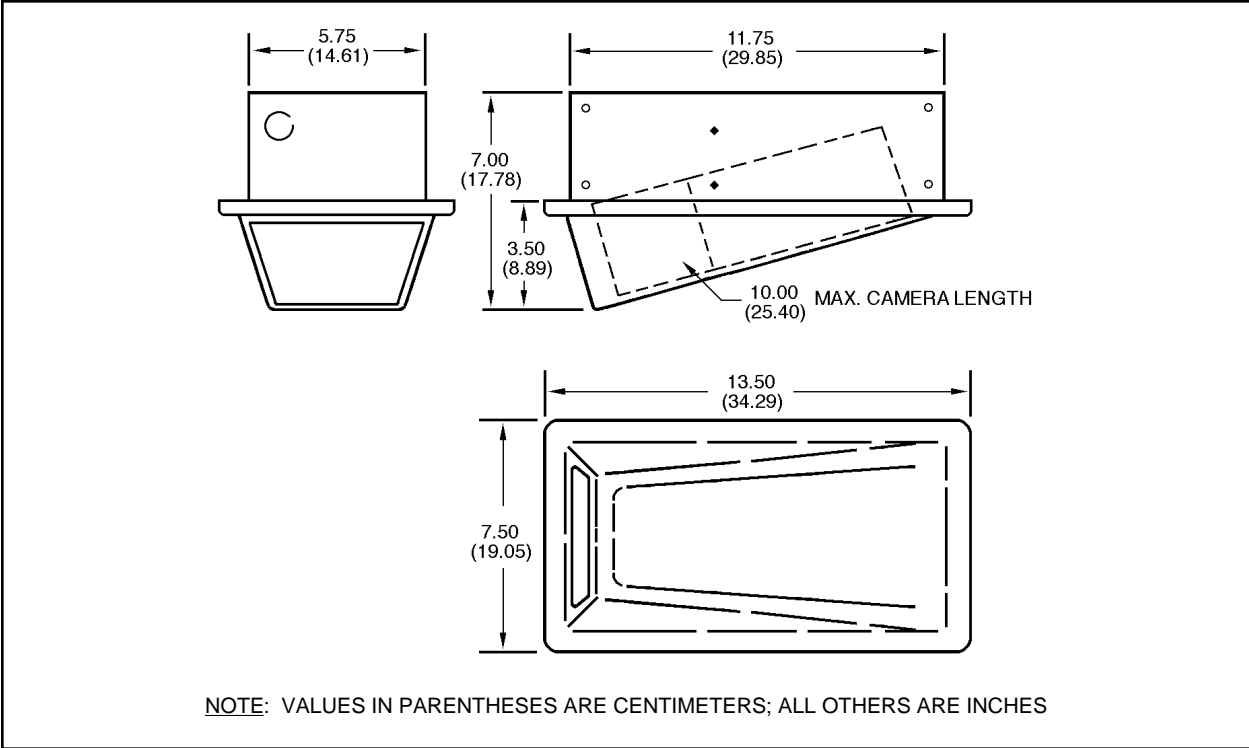
Upper section: Alodine

Lower section: Eggshell white ABS plastic

Dimensions: See Figure 2

Weight: 2 lbs 12 oz. (.79 kg)

*(Design and product specifications subject to change without notice.)*



**Figure 2.** Dimension Drawing

---

---

## 7.0 WARRANTY AND RETURN INFORMATION

---

---

### WARRANTY

Pelco will repair or replace, without charge, any merchandise proved defective in material or workmanship for a period of one (1) year after the date of shipment. Exceptions to this warranty are as noted below:

- Two (2) years on all standard motorized and fixed focal length lenses.
- Two (2) years on Legacy®, Intercept®, CM6700/CM8500/CM9500/CM9750/CM9760 Matrix, Spectra™, DF5 Series and DF8 Fixed Dome products.
- Two (2) years on WW5700 series window wiper (excluding wiper blades).
- Two (2) years on cameras.
- Six (6) months on all pan and tilts, scanners or preset lenses used in continuous motion applications (e.g., preset scan, tour and auto scan modes).

Pelco will warranty all replacement parts and repairs for 90 days from the date of Pelco shipment. All goods requiring warranty repair shall be sent freight prepaid to Pelco, Clovis, California. Repairs made necessary by reason of misuse, alteration, normal wear, or accident are not covered under this warranty.

Pelco assumes no risk and shall be subject to no liability for damages or loss resulting from the specific use or application made of the Products. Pelco's liability for any claim, whether based on breach of contract, negligence, infringement of any rights of any party or product liability, relating to the Products shall not exceed the price paid by the Dealer to Pelco for such Products. In no event will Pelco be liable for any special, incidental or consequential damages (including loss of use, loss of profit and claims of third parties) however caused, whether by the negligence of Pelco or otherwise.

The above warranty provides the Dealer with specific legal rights. The Dealer may also have additional rights, which are subject to variation from state to state.

If a warranty repair is required, the Dealer must contact Pelco at (800) 289-9100 or (209) 292-1981 to obtain a Repair Authorization number (RA), and provide the following information:

1. Model and serial number
2. Date of shipment, P.O. number, Sales Order number, or Pelco invoice number
3. Details of the defect or problem

If there is a dispute regarding the warranty of a product which does not fall under the warranty conditions stated above, please include a written explanation with the product when returned.

Ship freight prepaid to: Pelco  
300 West Pontiac Way  
Clovis, CA 93612-5699

Method of return shipment shall be the same or equal to the method by which the item was received by Pelco.

### RETURNS

In order to expedite parts returned to the factory for repair or credit, please call the factory at (800) 289-9100 or (209) 292-1981 to obtain an authorization number (CA number if returned for credit, and RA number if returned for repair). Goods returned for repair or credit should be clearly identified with the assigned CA/RA number and freight should be prepaid. All merchandise returned for credit may be subject to a 20% restocking and refurbishing charge.

Ship freight prepaid to: Pelco  
300 West Pontiac Way  
Clovis, CA 93612-5699

®Pelco and the Pelco logo are registered trademarks of Pelco.  
©Copyright 1997, Pelco. All rights reserved.