

INSTALLATION/OPERATION



Integrated Positioning System Remote Monitor Kit



IPS-RMK

C2453M-C (7/05)

Contents

Welcome	5
Getting Started	6
Test the Handheld to Ensure It Is Ready for Use	6
Install the Monitor Batteries	7
How to Assemble the Remote Monitor Kit	8
How to Adjust the Monitor	11
How to Control the Positioning System Using the Handheld	12
PTZ Control Menu	13
How to Upload Software	14
How to Download Software to the Handheld	15
Troubleshooting	16
Specifications	17

List of Illustrations

1	IPS-RMK Remote Monitor Kit	5
2	Battery Compartment	7
3	Battery Selection Switch Location and Settings	7
4	Assembly Steps ❶ Through ❷	8
5	Assembly Steps ❸ Through ❹	9
6	Remote Monitor Kit Connected to a Spectra III Dome	10
7	Remote Monitor Kit Connected to an IPS-RDPE-2	10
8	Monitor Controls	11
9	Handheld Main Menu	12
10	Spectra III Menu	12
11	PTZ Control Menu	13
12	Handheld Main Menu	14
13	Enter Software Title	15

Welcome

Thank you for purchasing Pelco's IPS-RMK, the remote monitor kit designed to assist in the installation and servicing of Spectra III™ SE/Spectra III™, Esprit®, or ExSite™ systems. Use the remote monitor kit to observe video, verify operation of the PTZ controls, check the address and baud settings, and program the positioning system. Software upgrades can also be performed with Spectra III SE/Spectra III and ExSite systems.

The IPS-RMK is supplied with the following equipment:

- 1 Carrying case (refer to Figure 1)
 - 1 5.9-inch TFT-LCD monitor
 - 1 Handheld loaded with the control/upload utility
 - 1 Serial cable for the handheld
 - 1 IPS-CABLE interface cable for the RJ-45 port of the dome system
 - 2 Straps
- 1 Remote Monitor Kit Resource CD
- 1 Handheld box
 - 1 Cradle
 - 1 Handheld software CD
 - 1 Handheld operation manual



Figure 1. IPS-RMK Remote Monitor Kit

Getting Started

Before using the remote monitor kit, do the following:

1. Test the handheld to make sure it is ready for use.
2. Install the batteries for the monitor.

TEST THE HANDHELD TO ENSURE IT IS READY FOR USE

Batteries and software for the handheld were installed at the factory before the IPS-RMK was shipped. Before using the remote monitor kit check the battery gauge of the handheld to ensure that the batteries are still functioning.

To check the batteries refer to the operation manual supplied with the handheld.

NOTE: The Spectra III, Esprit, and ExSite application programs are installed on the handheld at the factory. If the batteries of the handheld are functioning, the handheld should be ready for immediate use.

INSTALL THE MONITOR BATTERIES

The battery pack located on the back of the monitor holds 8 AA or 10 NiCad rechargeable batteries (batteries not included). To install the batteries, do the following:

1. Remove the monitor from the monitor compartment of the IPS-RMK (refer to Figure 1).
2. Press the tab located on the bottom of the battery pack of the monitor (refer to Figure 2).
3. Gently lift the battery back.
4. Install batteries.
5. Set the battery selection switch (refer to Figure 3).
6. Reinstall the battery pack onto the monitor.

⚠ WARNING: Never use a DC power supply when batteries are installed.



Figure 2. Battery Compartment

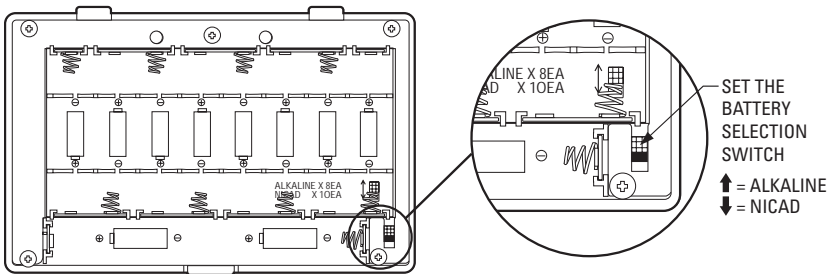


Figure 3. Battery Selection Switch Location and Settings

How to Assemble the Remote Monitor Kit

Refer to Figure 4 for the following steps.

- 1 Lift the handheld compartment.
- 2 Open the bottom flap of the cable pouch. Pull the serial cable for the handheld out through the bottom of the pouch and connect to the bottom of the handheld. Secure excess cable and place back into pouch.
- 3 Open the top flap of the cable pouch. Pull the BNC connector out through the top of the pouch. Connect to the VIDEO IN connector located on the top of the monitor.
- 4 Pull the interface cable (IPS-CABLE) out of the pouch, and plug the RJ-45 connector into the RJ-45 port of the Spectra III SE/Spectra III or IPS-RDPE-2 remote data port.

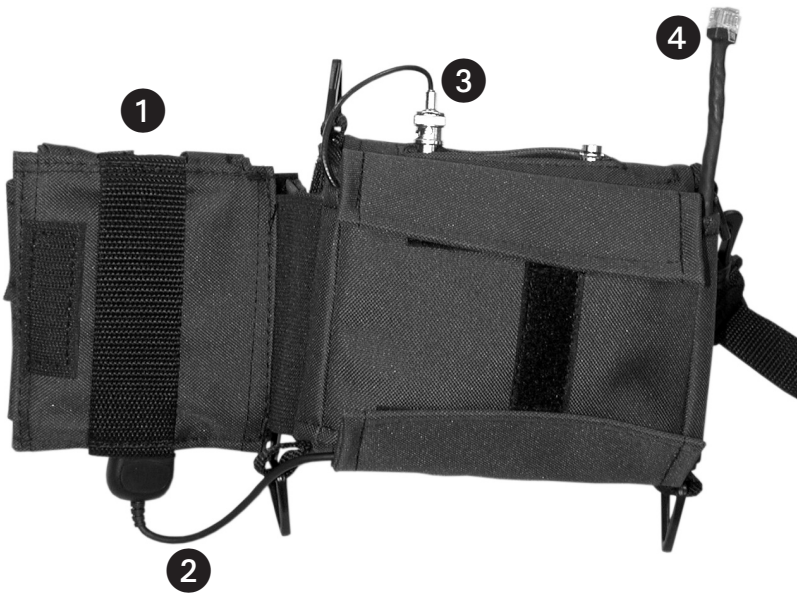


Figure 4. Assembly Steps 1 Through 4

Refer to Figure 5 for the following steps.

- 5 Open the monitor compartment. Connect the top flap to the side flap. This will reduce the glare of the sun on the monitor when using the kit outdoors. This step is not required if there is no glare on the monitor.
- 6 Fold the loose part of the bottom flap under and attach to the Velcro®.
- 7 Open the handheld compartment. Attach the two side Velcro strips to the Velcro strips on the monitor compartment. This will support the handheld during use.
- 8 Attach the side flaps of the handheld compartment to the top and bottom flaps. Refer to Figure 6 and Figure 7 for final views of the kit assembly.



Figure 5. Assembly Steps 5 Through 8

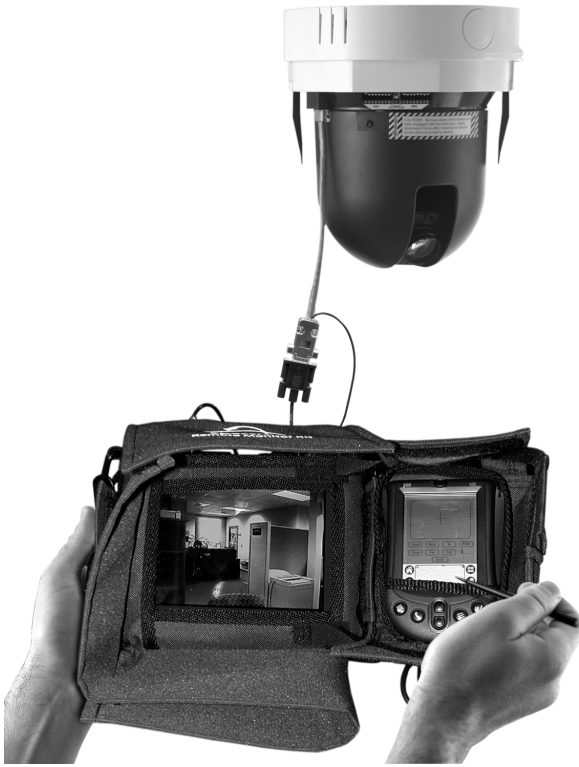


Figure 6. Remote Monitor Kit Connected to a Spectra III Dome



Figure 7. Remote Monitor Kit Connected to an IPS-RDPE-2

How to Adjust the Monitor

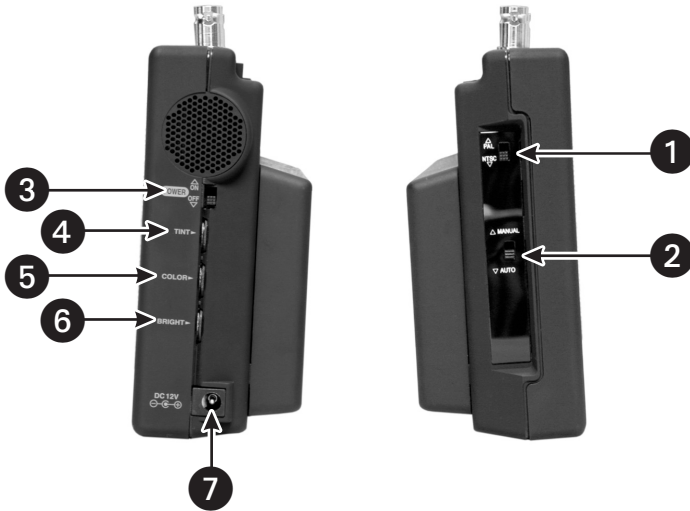


Figure 8. Monitor Controls

- 1 NTSC/PAL switch - Set the NTSC/PAL switch to the correct setting for your location.
- 2 Manual/Auto switch - Select Auto to use the preset standard color adjustment. Set to Manual to set the color, tint, and brightness manually. Color, tint, and brightness controls cannot be adjusted manually if the switch is set to Auto.
- 3 ON/OFF switch - Do not leave the monitor ON when it is not being used. Battery life is 2.5 to 3 hours.
- 4 Tint - Turn the button up to increase greenish tones in the picture and down to increase the reddish tones in the picture.
- 5 Color - Turn the button up to increase the color saturation level and down to decrease the color saturation level.
- 6 Bright - Turn the button up to increase brightness and down to decrease brightness.
- 7 DC 12 VDC jack - Power jack for optional 12 VDC power supply not included.

How to Control the Positioning System Using the Handheld

The Spectra III, Esprit, and ExSite utilities are installed on the handheld contained in this kit. The handheld is ready for immediate use.

Before using the handheld to control a system, know how to operate the handheld. For instructions on how to operate the handheld, refer to the manual shipped in the handheld box.

1. Turn the handheld ON.
2. Tap the application icon.

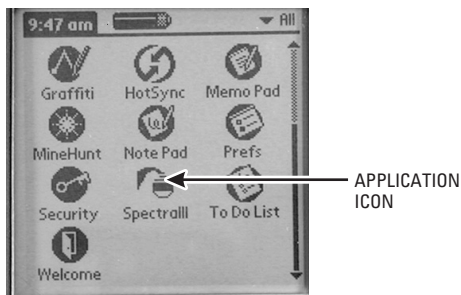


Figure 9. Handheld Main Menu

3. Select the protocol for the system and then enter the system address.

IMPORTANT: The handheld will not operate systems using P protocol address 1. To control the system with the handheld, change the P address to 2 or higher.



Figure 10. Spectra III Menu

NOTE: If you normally use Coaxitron®, you may need to assign a D protocol address to use the interface cable (IPS-CABLE).

4. Tap the PTZ button.

PTZ CONTROL MENU

OPEN (Iris Open) - Tap the OPEN button to make a selection.

CLOSE (Iris Close) - Tap the CLOSE button to cancel a selection.

NEAR (Focus Near) - Tap the NEAR button to focus near.

FAR (Focus Far) - Tap the FAR button to focus far.

IN (Zoom In) - Tap the IN button to zoom near.

OUT (Zoom Out) - Tap the OUT button to zoom far.

PGM (Preset 95) - Tap the PGM button to access the programming menu for the dome system. Refer to the operation and programming manual supplied with Spectra III SE/Spectra III dome or ExSite System.

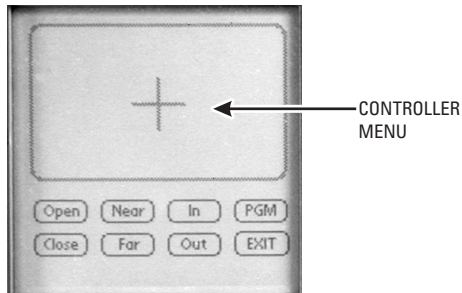


Figure 11. PTZ Control Menu

How to Upload Software

Operating software and language files can be uploaded to a Spectra III Series or ExSite system. The latest version of the control/upload utility is installed on the handheld. To upload future revisions, refer to *How to Download Software to the Handheld*

Software and language files cannot be uploaded to an Esprit system.

WARNING: To upload software using the IPS-RDPE-2 remote data port the following software must be installed:

- Spectra III dome drive must have operating software version 1.2 or higher installed.
- ExSite Explosionproof system must have operation software version 1.13 or higher installed.

Software cannot be uploaded to an Esprit system.

Only perform system upgrades when necessary. Software upgrades do not need to be performed if the system is operating properly.

WARNING: To prevent damage to the system, never cycle power or attempt control of the unit during the upload process. The upload process is not complete until the system reboots and the 'Configure Done' message appears on the monitor.

1. Assemble the remote monitor kit. Refer to *How to Assemble the Remote Monitor Kit*.
2. Tap the application icon.

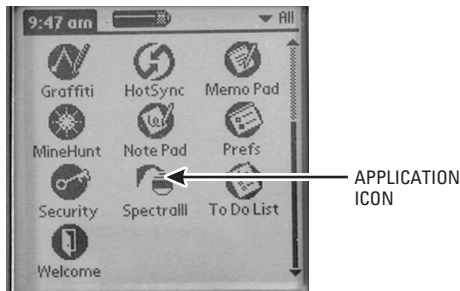


Figure 12. Handheld Main Menu

3. Enter the name of the software title where the blinking cursor appears on the screen.

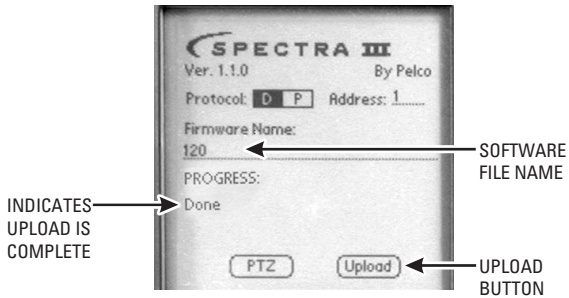


Figure 13. Enter Software Title

4. Tap the Upload button. The software upload starts.
5. Wait until "Done" appears on the screen before unplugging the RJ-45 cable.



WARNING: Do not cycle power to the system during the upload process. The "Done" message on the handheld indicates only that the first part of the upload is done. The upload process is not complete until the system reboots and the "Configure Done" message appears on the monitor.

HOW TO DOWNLOAD SOFTWARE TO THE HANDHELD

1. Download the latest application software from the Remote Monitor Kit Resource CD or Pelco's website (www.pelco.com) onto a desktop computer.
2. Use the HotSync® function to install the software file onto the handheld. Refer to the manual supplied with the handheld for instructions on how to perform a HotSync operation.

Troubleshooting

Error Message	Explanation
Please Choose a File To Upload	No file was specified before clicking Upload.
File Not Found	The file specified is not on the handheld device. Go to the handheld information screen to verify the file exists. Use the HotSync function to install the software file to the handheld and try again.
Error Opening Port	The program cannot open the COM 1 port. Another application may be using the port. Close the other application, or perform a soft reset to reset the port.
Error Opening Serial Library	The serial library cannot be found. Verify that it is installed by going to handheld information screen. Palm OS version 3.5 compatible software should be installed on the device.
Timeout	The system is not responding to the download. Check all physical connections and try again.
Erase Failure	The positioning system fails to erase the flash memory before loading the new software. This is an error received from the positioning system and is not from the loader software. Cycle power to the positioning system . Upload the software to the positioning system one more time. If the message appears again, there may be a problem with the positioning system. Contact Pelco's Product Support Department.
Program Failure	The positioning system failed to program the flash memory with the new software. This is an error received from the positioning system and is not from the loader software. Cycle power to the positioning system. Upload the software to the positioning system one more time. If the message appears again, there may be a problem with the positioning system. Contact Pelco's Product Support Department.
Memory Allocation Failure	The positioning system failed to allocate memory correctly during the download process. This is an error received from the positioning system and is not from the loader software. Cycle power to the positioning system. Upload the software to the positioning system one more time. If the message appears again, there may be a problem with the positioning system. Contact Pelco's Product Support Department.
Termination Received	The positioning system received a command instructing it to stop downloading. This is an error received from the positioning system itself and is not from the loader software. Cycle power to the positioning system. Upload the software to the positioning system one more time. If the message appears again, there may be a problem with the positioning system. Contact Pelco's Product Support Department.
An Unknown Error Occurred	An unknown error occurred. This is an error received from the positioning system and is not from the loader software. Cycle power to the positioning system. Upload the software to the positioning system one more time. If the message appears again, there may be a problem with the positioning system. Contact Pelco's Product Support Department.

Specifications

IPS-RMK

Handheld

Size	4.7" H x 3.1" W x .7" D (11.9 x 7.9 x 1.8 cm)
Weight	4.4 oz (.20 kg)
Memory	8 MB
Battery	2 AAA batteries
Display	Advanced LCD with backlight
Expansion	Serial port
Operating System	Palm OS compatible, version 3.5 or higher
HotSync®	Serial cradle
Software	Spectra III Programming, PTZ control, and HotSync technology for local and remote synchronization with your PC

Monitor

Display	5.6" diagonal, TFT-LCD, active matrix
Backlight	Built-in (CCFT)
Input Signal	NTSC/PAL (selectable)
Dot Format	960 (H) x 234 (V) dots
Dot Pitch	0.120 mm (H) x 0.360 mm (V)
Brightness Rating	200 cd/m2 (Nit)
Number of Pixels	224,640 dots
Contrast Ratio	100:1
Viewing Angle L/R/T/B	40°/40°/10°/30°
Pixel Configuration	Stripe
Power Requirements	12-15 VDC, 1 A
Power Consumption	6.5 W
Battery Pack	Holds 8 AA or 10 NiCad, rechargeable batteries (batteries not included)
Battery Life	Approximately 2.5 hours
Input Signal Level	1.0 Vp-p (positive) 75 ohms
Operating Temperature	23° to 104°F (-5° to 40°C)
Storage Temperature	-13° to 108°F (-25° to 60°C)
Connectors	
Video In/Out	BNC, female
DC Input Power	2.1 mm jack
Unit Weight	2.9 lb (1.3 kg)
Shipping Weight	6 lb (2.7 kg)

IPS-CABLE

Connectors

Receiver	One RJ-45 serial interface connector
Video	One BNC, male connector
Control	One serial DB-9 female connector (mating cable required for Palm OS-compatible handheld and iPaq PC applications)
Length	48" (122 cm)

PRODUCT WARRANTY AND RETURN INFORMATION

WARRANTY

Pelco will repair or replace, without charge, any merchandise proved defective in material or workmanship **for a period of one year** after the date of shipment.

Exceptions to this warranty are as noted below:

- Five years on FT/FR8000 Series fiber optic products.
- Three years on Genex® Series products (multiplexers, server, and keyboard).
- Three years on Camclosure® and fixed camera models, except the CC3701H-2, CC3701H-2X, CC3751H-2, CC3651H-2X, MC3651H-2, and CC3651H-2X camera models, which have a five-year warranty.
- Two years on standard motorized or fixed focal length lenses.
- Two years on Legacy®, CM6700/CM6800/CM9700 Series matrix, and DF5/DF8 Series fixed dome products.
- Two years on Spectra®, Esprit®, ExSite™, and PS20 Scanners, including when used in continuous motion applications.
- Two years on Esprit® and WWW5700 Series window wiper (excluding wiper blades).
- Eighteen months on DX Series digital video recorders, NVR300 Series network video recorders, and Endura™ Series distributed network-based video products.
- One year (except video heads) on video cassette recorders (VCRs). Video heads will be covered for a period of six months.
- Six months on all pan and tilts, scanners or preset lenses used in continuous motion applications (that is, preset scan, tour and auto scan modes).

Pelco will warrant all replacement parts and repairs for 90 days from the date of Pelco shipment. All goods requiring warranty repair shall be sent freight prepaid to Pelco, Clovis, California. Repairs made necessary by reason of misuse, alteration, normal wear, or accident are not covered under this warranty.

Pelco assumes no risk and shall be subject to no liability for damages or loss resulting from the specific use or application made of the Products. Pelco's liability for any claim, whether based on breach of contract, negligence, infringement of any rights of any party or product liability, relating to the Products shall not exceed the price paid by the Dealer to Pelco for such Products. In no event will Pelco be liable for any special, incidental or consequential damages (including loss of use, loss of profit and claims of third parties) however caused, whether by the negligence of Pelco or otherwise.

The above warranty provides the Dealer with specific legal rights. The Dealer may also have additional rights, which are subject to variation from state to state.

If a warranty repair is required, the Dealer must contact Pelco at (800) 289-9100 or (559) 292-1981 to obtain a Repair Authorization number (RA), and provide the following information:

1. Model and serial number
2. Date of shipment, P.O. number, Sales Order number, or Pelco invoice number
3. Details of the defect or problem

If there is a dispute regarding the warranty of a product which does not fall under the warranty conditions stated above, please include a written explanation with the product when returned.

Method of return shipment shall be the same or equal to the method by which the item was received by Pelco.

RETURNS

In order to expedite parts returned to the factory for repair or credit, please call the factory at (800) 289-9100 or (559) 292-1981 to obtain an authorization number (CA number if returned for credit, and RA number if returned for repair).

All merchandise returned for credit may be subject to a 20% restocking and refurbishing charge.

Goods returned for repair or credit should be clearly identified with the assigned CA or RA number and freight should be prepaid. Ship to the appropriate address below.

If you are located within the continental U.S., Alaska, Hawaii or Puerto Rico, send goods to:

Service Department
Pelco
3500 Pelco Way
Clovis, CA 93612-5699

If you are located outside the continental U.S., Alaska, Hawaii or Puerto Rico and are instructed to return goods to the USA, you may do one of the following:

If the goods are to be sent by a COURIER SERVICE, send the goods to:

Pelco
3500 Pelco Way
Clovis, CA 93612-5699 USA

If the goods are to be sent by a FREIGHT FORWARDER, send the goods to:

Pelco c/o Expeditors
473 Eccles Avenue
South San Francisco, CA 94080 USA
Phone: 650-737-1700
Fax: 650-737-0933



This equipment contains electrical or electronic components that must be recycled properly to comply with Directive 2002/96/EC of the European Union regarding the disposal of waste electrical and electronic equipment (WEEE). Contact your local dealer for procedures for recycling this equipment.

REVISION HISTORY

Manual #	Date	Comments
C2453M	7/02	Original version.
C2453M-A	4/03	Added Esprit and IPS-RDPE-2 information.
C2453M-B	1/04	Revised per ECO# 03-9497 for software revision.
C2453M-C	7/05	Added ExSite system information.

Pelco, the Pelco logo, Spectra, Genex, Coaxitron, Esprit, Camclosure, and Legacy are registered trademarks of Pelco.

Velcro is a registered trademark of Velcro Industries.

HotSync and Palm OS are registered trademarks of Palm, Inc.

ExSite, Spectra III, and Spectra III SE are trademarks of Pelco.

Palm is a trademark of Palm, Inc.

© Copyright 2005, Pelco. All rights reserved.



Worldwide Headquarters
3500 Pelco Way
Clovis, California 93612 USA

USA & Canada
Tel: 800/289-9100
Fax: 800/289-9150
International
Tel: 1-559/292-1981
Fax: 1-559/348-1120

www.pelco.com

ISO9001