

# Nuvo®

Designed by Audiophiles.  
Installed by Professionals.



 **legrand**

# A HISTORY OF EXCELLENCE.

1924

Nuvo begins as the Davitt & Hanser Music Company. Later renamed Hanser Holdings International (HHI), Nuvo has become one of the most trusted names in music manufacturing and distribution.



1989

HHI acquires the world-renowned music amplification and engineering company Kustom.

1991

Kustom introduces the first integrated whole home audio system under the name Kustom Home Sound.



2002

HHI launches Nuvo, the new brand name of Kustom Home Sound.

2012

Legrand, North America acquires Nuvo. Today, Nuvo continues to deliver unparalleled innovations in sound.



## DESIGNED BY AUDIOPHILES.

Nuvo, the award-winning product line of Legrand, specializes in advanced whole home audio systems and solutions that deliver a truly unparalleled listening experience. With a deep-seated passion for music and an audio lineage reaching back to 1924, Nuvo was born of the Kustom Home Sound brand, the same company that delivered stage amplification for professional musicians ranging from Johnny Cash to Quiet Riot. Today, Nuvo continues to deliver innovative, highperforming products for professional home audio installations.

# LISTEN TO YOUR DIGITAL MUSIC IN EVERY ROOM, FROM ANY SOURCE.

NUVO is an intelligent system, made up of audio HI-FI components, connected via Wi-Fi or with wires to the home LAN network. It is specially designed to faithfully play digital music in several rooms.

Using a specific free App for Smartphone and Tablet it is possible to access to music playlists in local network and the best online music streaming services.



Internet



Home LAN network



Eliot is the Legrand program dedicated to connected objects (Internet of things) which identifies all those products or systems which, because they can connect to the internet, give added value in terms of functionality, information, interactions with the environment and use.

## NuVo system has excellent features such as:

- Simplicity
- Access all music
- Quality
- Installation flexibility

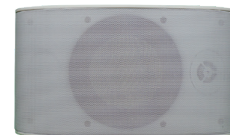


Multi-zone professional player with Rack mounting



Control keypad

Outdoor speaker



Single-zone wired/wireless player



Tabletop speakers



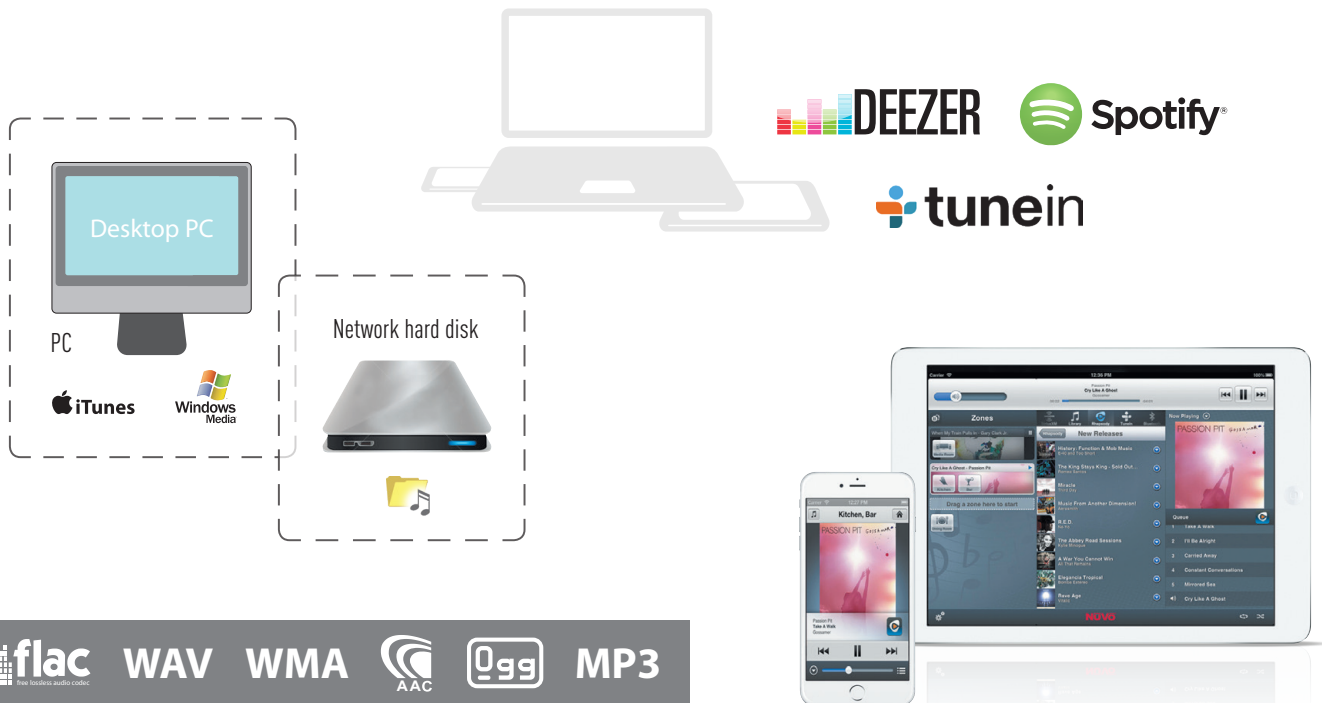
Soundbar with Subwoofer

## ACCESS ALL MUSIC.

Nuvo offers great listening freedom with integrated access to endless music options:

- audio contents in network and iTunes playlists;
- access to the wide range of radio and streaming services in the Internet.

Whether it is an old musical success or one of the most recent releases, with Nuvo you always enjoy excellent music.



# COMPLETE CONTROL.

## Player Nuvo App

Nuvo makes it easy to get right to the music you love with the intuitive Player app. By automatically displaying your favorite music services and artists, it allows fast, simple browsing with a world of music available right at your fingertips. Play different songs in every room, or stay in perfect sync when broadcasting a single song throughout the home.



## PLAYER NUVO APP

Manage music library, quantity, and playlists, as well as Play, Pause, Volume, Mute, Skip Track, and more.

Choose music from an unlimited variety of sources

Easy browsing by song, album, genre, and artist

Control music in every zone or in simultaneous zones to play one song throughout the home

Download App for free from iTunes and Google Play

## Flush-mounted keypad and Touch Screen

These devices are used with the App for Smartphone adding new player control modes. The flush-mounted Keypad and the wall-mounted Touch Screen in fact guarantee instant access to your music wherever you are in the home. Installation of the two devices is extremely simple and only requires the PoE electrical connection.



### TOUCH SCREEN ITEM NV-P30-BK

An alternative solution to the Smartphone to access the Nuvo Player app for complete management of all the audio zones, sources and functions.

Sleek, high contrast 7", Android 1024 x 600 IPS capacitive Touch Screen

Connects easily with a single RJ45 802.11 PoE cable

Universal mounting bracket for quick installation



### KEYPAD ITEM NV-P20-ARMG AND NV-P20-ARWH

Flush-mounted device to control Play, Pause, Volume, Mute, and audio track Navigation functions

A single button allows quick access to 5 preset favourites

Backlit capacitive touch display

Connects easily with a single RJ45 802.11 PoE cable

Available in LivingLight version

# FLEXIBLE SOLUTIONS.

## Wired/wireless single-zone players

Thanks to the wireless connection these players give an excellent sound even in spaces which are difficult to wire. Single-zone players support both wired Ethernet or Wireless 802.11a/b/g/n configuration options for optimal flexibility.



### PLAYER ITEM NV-P100-EU

Give any room instant access to endless music options or stay perfectly in sync when all zones are playing the same song

Provides a total 40 watts of power at 8 ohms to a single zone

#### Specifications

Power	20 W per channel @ 8 ohms
Network	Ethernet or Wireless 802.11a/b/g/n
No. of Zones	1
No. of Channels	2
Inputs	3.5 mm, USB
Output	3.5 mm

### PLAYER ITEM NV-P200-EU

Instant access to endless music options or stay perfectly in sync when all zones are playing the same song

Connect to any Bluetooth-enabled device to listen instantly

Provides a total 120 watts of power at 8 ohms to a single zone



#### Specifications

Power	60 W per channel @ 8 ohms stable
Network	Ethernet or Wireless 802.11a/b/g/n
No. of Zones	1
No. of Channels	2
Inputs	3.5 mm, Bluetooth, USB
Output	3.5 mm





## PREAMPLIFIER PLAYER ITEM NV-P300-EU

Specially made to use an audio or audio/video power amplifier of other brands for the sound system of a zone.

### Specifications

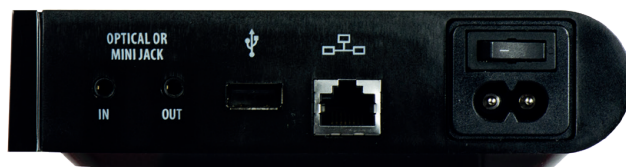
Power	-
Network	Ethernet or Wireless 802.11a/b/g/n
No. of Zones	1
Inputs	3.5 mm analog or optical (Toslink for adapters 3.5 mm included), USB
Output	3.5 mm analog or optical (Toslink for adapters 3.5 mm included)



NV-P100-EU



NV-P200-EU



NV-P300-EU

# EXCEPTIONAL EXPERIENCES.

NEW

## Tabletop speaker

Stream music to any room with this all-in-one stereo speaker and amplifier, or easily expand an existing Player Portfolio system with an additional zone of audio. With a powerful 2.1 system, the tabletop speaker fills any room with rich, full-bodied sound, or stays perfectly in sync with other zones playing the same song. Blending premium performance with installation flexibility, the tabletop speaker makes it easier than ever to listen to the music you love - whenever or wherever you might want to listen.



## TABLETOP SPEAKER ITEM NV-P400-EU

All-in-one single-zone amplifier and stereo speaker easily expands the Nuvo system

Powerful 2.1 system with 5 1/4" subwoofer, two midrange drivers, and two tweeters

Conveniently controlled with the Nuvo Player app and optional in-wall keypads

Capacitive touch controls on the device provide Play, Pause, Volume, Mute, and Track Navigation

Wired or wireless connection allows a flexible installation

## Specifications

Power	n.d.
Network	Ethernet or Wireless 802.11a/b/g/n
No. of Zones	1
Input	3.5 mm analog
Dimensions	368 L x 217 H x 149 D (mm)

### SoundBar and Subwoofer

Merging the exceptional audio quality of Nuvo range with dynamic home theater technology, the device delivers a cinematic experience that true audiophiles will love. With a powerful 2.1 system, complete with an 8" wireless subwoofer, the Soundbar boosts listening experiences, playing movie, TV, or game audio in brilliant clarity. The Soundbar can also be used as a player for a zone, granting access to networked music collections and endless streaming services.

With convenient control options and simple setup, the Soundbar delivers an immersive audio experience to complete any Home Theater.

### SOUNDBAR WITH SUBWOOFER ITEM NV-P500-EU

"All in one" single-zone player and Home Theater Soundbar

Powerful 2.1 system complete with 8" wireless subwoofer

Can be controlled with integrated IR remote control, Nuvo Player App, wall-mounted Keypad or NUVO Touch screen.

Customized listening modes for music, movie, voice, and night

Mounting bracket included

### Specifications

Power	n.d.
Network	Ethernet or Wireless 802.11a/b/g/n
No. of Zones	1
Inputs	RCA, Toslink, USB
Soundbar Dimensions	877 L x 115 H x 108 D (mm)
Subwoofer Dimensions	231 L x 261 H x 303 D (mm)



# PROFESSIONAL FINISH. PROFESSIONAL POWER.

## Multi-zone professional player with Rack mounting

These players are intended for systems with high sound power and are installed centralised in professional A/V racks. Each Player can play sound in up to three listening zones with maximum efficiency.



## PLAYER ITEM NV-P3100-EU

3 zones, with 40 W per zone at 8 ohms

High-performance amplifier operates perfectly and saves energy while minimizing distortion

Rack mount ears included

### Specifications

Power	20 W per channel @ 8 ohm
Network	Wired
No. of Zones	3
No. of Channels	2 per zone
Input	3.5 mm x 3, USB x 3
Preamplifier Output	3.5 mm x 3



NV-P3100-EU

NEW

## PLAYER ITEM NV-P4300-EU

Highest quality rack mount player with DSP for enhanced performance

3 zones, with 110 W per zone at 4, 6 or 8 ohms (load is selectable within the app)

Backlit touch screen supports easy setup with visible system status, zone names, and more

Side mounted heat sinks and no fans for rack mounting

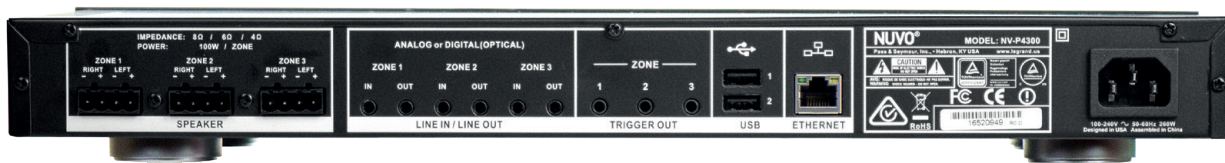
3.5 mm combination analog/TOSLINK jacks for line inputs and outputs

Rack mount ears included



### Specifications

Power	55 W per channel @ 4.6, or 8 ohm
Network	Wired
No. of Zones	3
No. of Channels	2 per zone
Input	Automatic detection 3.5 mm analog or optical x 3 (Toslink for adapters 3.5 mm included), USB x 3
Output Preamplifier	Auto-sensing 3.5mm analog or optical x 3 (Toslink to 3.5 mm adapters included)



NV-P4300-EU

## Single-Zone Player



Model

NV-P100-EU

NV-P200-EU

NV-P300-EU

Dimensions  
H x W x D

42 x 187 x 115 (mm)

42 x 229 x 127 (mm)

38 x 145.5 x 90.5 (mm)

Power  
(watt)

40  
(8 ohm, 20 W x 2)

120  
(4 ohm, 60 W x 2)

preamplifier

Generation D Energy-Efficient  
Amplifier



-

Domotz Ready



Control Apps for Apple / Android



Wi-Fi



Ethernet connection



Analog Line In



Analog Line Out



Optical In

-

-



Optical Out

-

-



USB port



Bluetooth

-



-

DSP

-

-

-

## All-In-One Speaker/Player



NV-P400-EU



NV-P500-EU

216 x 375 x 152 (mm)

Soundbar 108 x 877 x 115 (mm)  
Subwoofer 235 x 231 x 303 (mm)

closed system

closed system



## Multi-Zone Player



NV-P3100-EU



NV-P4300-EU

44 x 430 x 250 (mm)

54 x 430 x 258 (mm)

3 zones x 40  
(8 ohm, 20 W x 2 per zone)

3 zones x 110 W @ 4, 6, or 8 ohm



# SPEAKERS.

The Nuvo speakers are high-performing products specially created to guarantee sound quality for real connoisseurs, with full and deep basses and impeccable performance.

Available in three different series, Series 2, Series 4 and Series 6 and for installation:

- ceiling-mounted,
- wall-mounted,
- outdoor

The speakers are made with quality components and materials but differ from each other for the different design criteria adopted and the sizing of the internal components. The ceiling and wall-mounted speakers are supplied with 4 mm thick finish grids.





## SERIES 2

---

Ideal for rooms where a balanced sound with moderate volume levels is needed. The silk dome tweeters and the polypropylene woofers give a soft, natural sound with deep basses and crystal clear trebles.



## SERIES 4

---

These speakers provide better sound quality characterised by top notch clarity and dynamics thanks to the aluminium tweeters and glass fibre woofers.



## SERIES 6

---

In addition to the players with the maximum power, these speakers provide great performance for sound system in large spaces of the house. The titanium speakers produce crystal clear and realistic sound while the carbon fibre woofer gives deep and definite basses.



# SERIES 2

## Impedance

8 Ohms

## Sensitivity

86 dB

## Power

50 W RMS / 100 W Peak

## Woofer Material

Polypropylene

## Tweeter Material

Silk



NV-2IC6



NV-2IC6-ANG



NV-2IC6-DVC

Overall Dimensions	9.06" / 230 mm	9.06" / 230 mm	9.06" / 230 mm
Cutout Dimensions	8.07" / 205 mm	8.07" / 205 mm	8.07" / 205 mm
Woofer Size	6,5"	6,5"	6,5"
Tweeter Size	0,5"	0,5"	0,5"
Mounting Depth	3.9" / 99 mm	4.57" / 116 mm	3.9" / 99 mm
Frequency Response	60 Hz - 20 KHz	60 Hz - 20 KHz	55 Hz - 20 KHz

# SERIES 4

## Impedance

8 Ohms

## Sensitivity

88 dB

## Power

75 W RMS / 150 W Peak

## Woofer Material

Glass fibre

## Tweeter Material

Aluminium



NV-4IC6



NV-4IC6-ANG



NV-4IC6-DVC

Overall Dimensions	9.06" / 230 mm	9.06" / 230 mm	9.06" / 230 mm
Cutout Dimensions	8.07" / 205 mm	8.07" / 205 mm	8.07" / 205 mm
Woofer Size	6,5"	6,5"	6,5"
Tweeter Size	0,75"	0,75"	0,75"
Mounting Depth	3.94" / 100 mm	4.76" / 121 mm	3.94" / 100 mm
Frequency Response	55 Hz - 20 KHz	55 Hz - 20 KHz	50 Hz - 20 KHz

# SERIES 6

## Impedance

8 Ohms

## Sensitivity

89 dB

## Power

100 W RMS / 200 W Peak

## Woofer Material

Kevlar® / Carbon Fibre Weave

## Tweeter Material

Titanium



NV-6IC6



NV-6IC6-ANG

Overall Dimensions	9.06" / 230 mm	9.06" / 230 mm
Cutout Dimensions	8.07" / 205 mm	8.07" / 205 mm
Woofer Size	6,5"	6,5"
Tweeter Size	1"	1"
Mounting Depth	3.94" / 100 mm	4.76" / 121 mm
Frequency Response	60 Hz - 20 KHz	60 Hz - 20 KHz



NV-2IC8

10.63" / 270 mm

9.68" / 246 mm

8"

0,5"

4.37" / 111 mm

45 Hz - 20 KHz



NV-2IC8-ANG

11.22" / 285 mm

10.15" / 258 mm

8"

0,5"

5.31" / 135 mm

45 Hz - 20 KHz



NV-2IW6

8.66" x 11.81" / 220 mm x 300 mm

7.6" x 10.79" / 194 mm x 274 mm

6,5"

0,5"

3.27" / 83 mm

60 Hz - 20 KHz



NV-4IC8

10.63" / 270 mm

9.68" / 246 mm

8"

0,75"

4.41" / 112 mm

40 Hz - 20 KHz



NV-4IC8-ANG

11.22" / 285 mm

10.15" / 258 mm

8"

0,75"

5.55" / 141 mm

40 Hz - 20 KHz



NV-4IW6

8.66" x 11.81" / 220 mm x 300 mm

7.6" x 10.79" / 194 mm x 274 mm

6,5"

0,75"

3.27" / 83 mm

55 Hz - 20 KHz



NV-6IC8

10.63" / 270 mm

9.68" / 246 mm

8"

1"

4.41" / 112 mm

35 Hz - 20 KHz



NV-6IC8-ANG

11.22" / 285 mm

10.15" / 258 mm

8"

1"

5.55" / 141 mm

35 Hz - 20K Hz



NV-6IW6

8.66" x 11.81" / 220 mm x 300 mm

7.6" x 10.79" / 194 mm x 274 mm

6,5"

1"

3.27" / 83 mm

50 Hz - 20 KHz

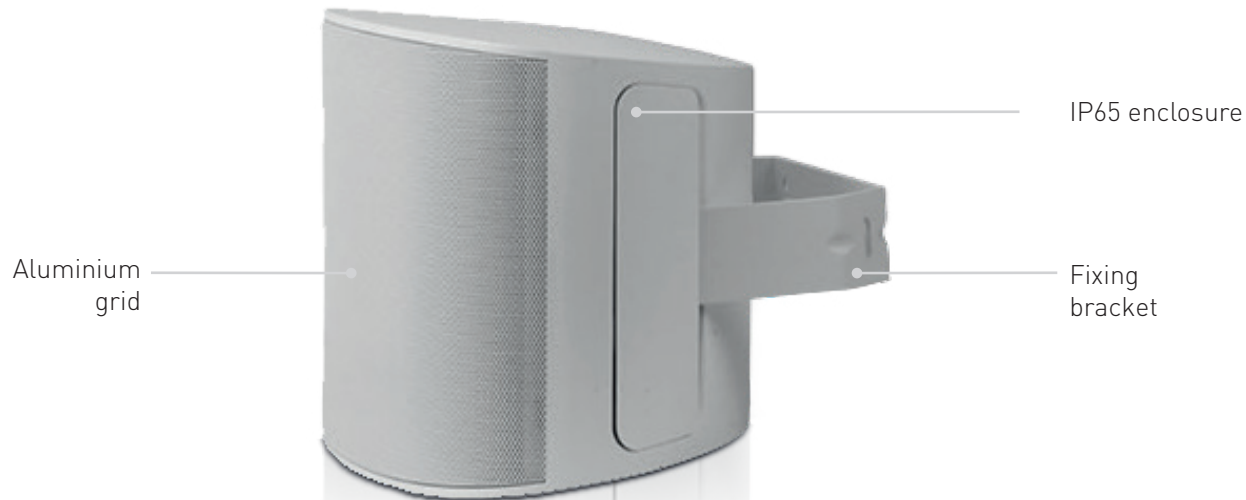
# SPEAKERS.

## SERIES 2 AND SERIES 6 NEW OUTDOOR SPEAKERS

The new outdoor speakers feature powerful and crystalline sound thanks to the use of a 6.5" diameter woofer combined with 2 tweeters. The elegant design combines small size and a modern appearance which fits perfectly in any room.

### Features

- Impedance: 8 Ohm;
- Grey painted in aluminium powder;
- Designed for safe and easy installation;
- Aluminium fixing bracket;
- IP65 protection;
- high protection against UV rays, saline air and extreme temperatures.



**Note:** availability expected in the first six months of 2018.

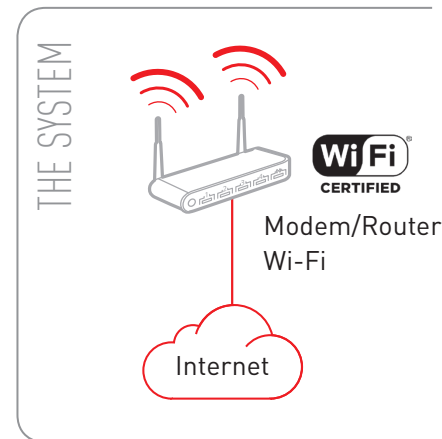
# SYSTEM INSTALLATION.

**Just a few operations are needed to install Nuvo:**

1. install the Player and the speakers in every room;
2. install the Touch screen and/or control Keypad if necessary;
3. connect the devices to the home data network;
4. download the APP from Internet and listen to the music checking the functions with Smartphone Tablet, Touch Screen and/or Keypad.

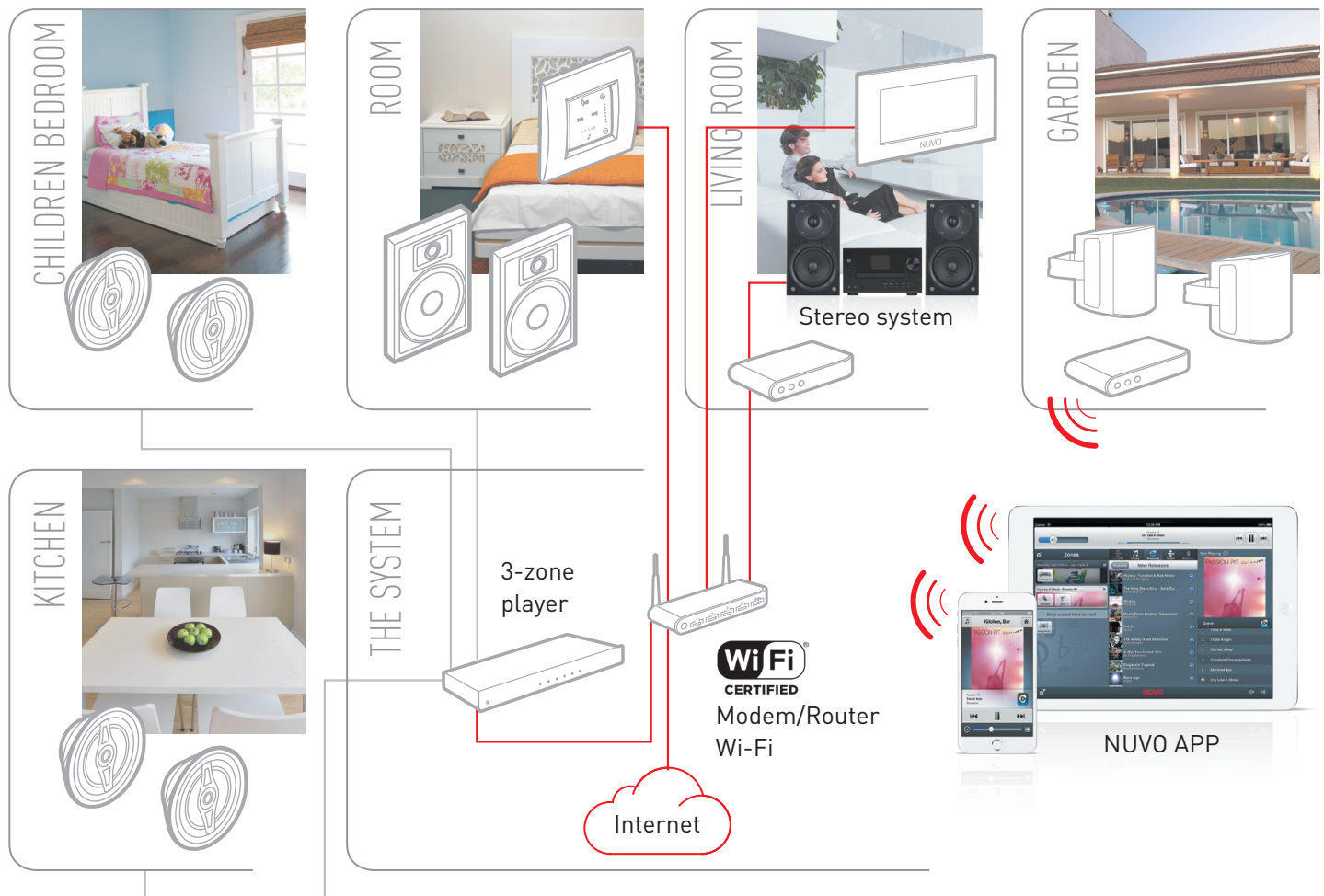
## WIRELESS SYSTEM

The ideal solution for easily expandable systems with wireless freedom.



## WIRED SYSTEM WITH WIRELESS EXPANSION

Professional solution for sound system in rooms fitted with wired LAN network.  
The 3-zone players can be centralised in rack. The system can be expanded via wireless.








## FOLLOW US ALSO ON

@ Web site: [www.legrand.com](http://www.legrand.com)

 [www.youtube.com/legrand](http://www.youtube.com/legrand)

 [www.twitter.com/legrand](http://www.twitter.com/legrand)



**World Headquarters**  
and International Department  
87045 Limoges Cedex - France  
Tel. : + 33 (0) 5 55 06 87 87  
Fax : + 33 (0) 5 55 06 74 55