



**nextar** ™

MA797 MP3/MP4 Digital Audio/Video Player  
Instruction Manual

# TABLE OF CONTENT

|      |  |    |
|------|--|----|
| 1    | Key Features .....                             | 3  |
| 2    | System Requirements .....                      | 4  |
| 3    | Package Content .....                          | 5  |
| 4    | Before Using .....                             | 5  |
| 4.1  | Connect to a PC and download audio files ..... | 5  |
| 4.2  | Removing the player from the PC safely .....   | 5  |
| 4.3  | Charge the battery.....                        | 6  |
| 5    | Keys Description .....                         | 7  |
| 6    | Power On/Off .....                             | 8  |
| 7    | Basic operation .....                          | 8  |
| 8    | Playing music.....                             | 9  |
| 8.1  | Enter the music mode .....                     | 9  |
| 8.2  | Folder navigation.....                         | 9  |
| 9    | Playing Videos .....                           | 10 |
| 10   | Viewing photos.....                            | 11 |
| 11   | Reading E-book .....                           | 11 |
| 11.1 | Reading .....                                  | 11 |
| 11.2 | Using bookmark .....                           | 12 |
| 12   | Browsing all files .....                       | 13 |
| 13   | Voice Recording.....                           | 13 |
| 14   | Deleting files .....                           | 14 |
| 15   | FM Radio .....                                 | 14 |
| 16.  | Customizing Settings .....                     | 16 |
| 17.  | Troubleshooting .....                          | 19 |
| 18.  | Converting Video To AVI format.....            | 22 |
| 19.  | Technical Specifications .....                 | 28 |
| 20.  | Notice .....                                   | 29 |
| 21.  | Listening Cautions .....                       | 29 |
| 22.  | Precautions.....                               | 30 |
|      | FCC Caution.....                               | 32 |
|      | FCC Compliance.....                            | 32 |

## Cautions

- Do not subject the device to severe impact or drop it from high position.
- Do not use the player in extreme hot or cold, dusty or damp field. Do not expose it to direct sunshine.
- Excessive sound pressure from earphones and headphones can cause hearing loss.
- At full power, the prolonged listening of the device can damage the ear of the use.
- Avoid using the player in strong magnetic field.
- Keep the device away from water or other liquids. In the event that water or other liquids enter the device, power off the product immediately, and clean the device.
- Do not use chemical solution to clean the device in order to avoid corrosion. Clean it with a dry cloth.
- We are not responsible for the damages or lost data caused by malfunction, misusing, repairing the device or battery replacement.
- Do not attempt to disassemble, repair or modify the product. This will invalidate the guarantee.
- The design of the player or actual display may be different from what is shown in this manual. It should be subject to the actual display or design.

## 1 Key Features

- MP3 & WMA Player
- AVI Video player
- JPEG image viewer
- Folder Navigation
- Voice Recorder
- Stereo FM radio
- FM Recording
- Removable Storage Device
- Built-in rechargeable lithium-ion battery
- Customized settings

## 2 System Requirements

- Hardware: IBM PC & Compatible PC, Notebook with USB interface
- Operating System:
  - Microsoft Windows SE or later version  
Intel Pentium II 200 MHz or above  
128 MB RAM
  - Mac OSX V 10.0 or later version  
Power PC G5 800MHz or above  
512 MB RAM
  - Linux OS Kernel V2.4.0 or later version  
Intel Pentium II 200MHz or above  
128 MB RAM
- DRM9 support requires Windows XP or higher and Windows Media Player 10 or higher
- USB Support ,50 MB Free Hard Drive Space  
Installed Mouse ,Audio Card ,CD-ROM Drive


### 3 Package Content

- Main Unit
- Stereo earphones
- USB cable
- User Manual
- Application CD

### 4 Before Using


#### 4.1 Connect to a PC and download audio files

This player is plug & play for WIN2000/XP/ME/Vista OS. But for Windows98/SE, you are required to install a driver before connection. To connect it with PC for transferring files,

- (1) Plug the larger end of the USB cable to the USB port of the PC, and plug the smaller end to the USB port of the player.
- (2) When the  icon appear at the right bottom of the PC screen, double click “My Computer” on the desktop, you see a removable disk which indicates the player. Just use the removable disk as a regular local disk, copying files from or to it.

#### 4.2 Removing the player from the PC safely

For Windows2000/XP/Vista:

- (1) Left click the  icon at the right hand corner of the taskbar.

- (2) Click the pop-up mini-window with message of “Stop the USB Mass Storage Device – Drive (X)”.
- (3) When you are prompted to remove the device, pull out the player.

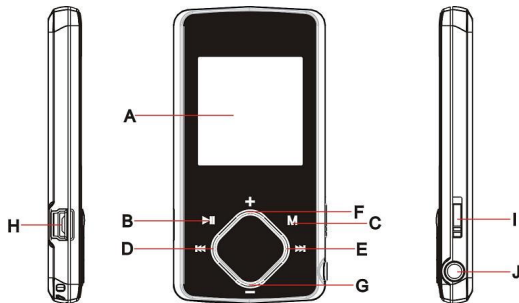
For Win98, please make sure the data transfer is completed before unplugging the MP3 player.

#### 4.3 Charge the battery

The device has a built-in lithium-ion rechargeable battery. It is charged via USB connection. You are required to charge it when you use it for the first time. It takes about 3 hours to fully charge the battery. Connect the larger end of the USB cable to the USB interface of PC, and connect the other smaller end of the USB cable to the USB interface of this player. The device is connected to PC and being charged.

**NOTICE:** *For maximum performance, lithium-ion batteries need to be used often. If you don't use the device often, be sure to recharge the battery at least once per month.*

## 5 Keys Description



- A. LCD Display**
- B. Play/Pause:** Turn on or turn off the device. Also play or pause audios.
- C. MENU:** Hold for a while to enter the main menu. Briefly press to confirm the selection or enter the folder navigation mode.
- D. Previous:** Play the previous track.
- E. Next:** Play the next track.
- F. VOL+:** Turn up the volume.
- G. VOL-:** Turn down the volume.
- H. USB port**
- I. Power Switch:** Turn on or turn off the power
- J. Earphone Jack**



## 6 Power On/Off

To power on,

- (1) Slide the **Power Switch** to the right to turn on the power.
- (2) Press and hold the **PLAY/PAUSE** button until you see prompt on the display.

To power off,

- (1) Press and hold the **PLAY/PAUSE** button until you see prompt on the display.
- (2) Slide the **Power Switch** to the left to turn off the power. (Be sure to complete this step for saving battery charge.)

***Note:** This player has a power-saving feature which enables the device to power off automatically if it is idle for about 3 minutes.*

## 7 Basic operation

| Function       | Operation   |
|----------------|---|
| Play/Pause     | Press the <b>PLAY/PAUSE</b> button to play or pause.                      |
| Adjust Volume  | Shortly press the <b>VOL+/VOL-</b> button to decrease or increase volume. |
| Previous Track | Shortly press the <b>PREVIOUS</b> button.                                 |
| Next Track     | Shortly press the <b>NEXT</b> button.                                     |

|                     |   |
|---------------------|---|
| Fast Forward        | Press and hold the <b>NEXT</b> button.  |
| Rewind              | Press and hold the <b>PREVIOUS</b> button.  |
| A-B Repeat          | To repeat a specified section of a track,<br>(1) During playing, press and hold the <b>VOL+</b> button to select the start point of the repeat.<br>(2) Press and hold the <b>VOL+</b> button again to select the stop point. The music section between the start point and the stop point is repeated.<br>(3) To stop A-B repeat, press the <b>VOL+</b> button. |
| Lock/Unlock buttons | To protect the buttons against being pressed accidentally or to unlock buttons, hold down the MENU button and the VOL- button together.   |

## 8 Playing music

### 8.1 Enter the music mode

Press and hold the **MENU** button to display the main menu. Use the PREVIOUS/NEXT button to select “Music” menu, and press the MENU button to confirm selection. Now you are in the MUSIC mode, refer music playing to the basic operations.

### 8.2 Folder navigation

To navigate through folders:

- (1) In the MUSIC mode, shortly press the **MENU** button to enter folder navigation mode.

- (2) Press the **PREVIOUS/NEXT** button to select a folder or track, and press the **MENU** button to confirm selection, or press the **PLAY/PAUSE** button to return.

## 9 Playing Videos

- (1) Press and hold the **MENU** button to display the main menu.
- (2) Use the **PREVIOUS/NEXT** button to select the “Video” menu, and press the **MENU** button to enter the video player mode.
- (3) Press the **PREVIOUS/NEXT** button to search a video file that you want to play, and press the **MENU** button to play. For detail information about playing, see the “Basic Operation” section. (Note: During playing, you can shortly press the **MENU** button to enter folder navigation mode.)

**Note:** *This player can only play AVI videos. For other formats, you need to use the converting tool included on the driver CD to convert them. For detail information about the converter, please refer to Page 21 - Converting Video to AVI format.*

## 10 Viewing photos

To view photos,

- (1) Press and hold the **MENU** button to display the main menu.
- (2) Select “Photo” and press the **MENU** button to confirm.
- (3) Press the **PREVIOUS/NEXT** button to select a folder or image, and press the **MENU** to confirm.
- (4) Select the photo that you want to display and press the **MENU** button to confirm.
- (5) In the full screen mode, you can press the **PREVIOUS/NEXT** button to display the previous or the next photo. Press the **PLAY/PAUSE** to start or stop an auto slide show. Press the **MENU** button to enter folder navigation mode.

***Note:** Some images may not be displayed. Try to use an image editor (Microsoft-Paint for example) to convert them or save them as JPEG format.*

## 11 Reading E-book

### 11.1 Reading

- (1) Press and hold the **MENU** button to display the main menu.
- (2) Select “E-book” and press the **MENU** button to confirm.
- (3) Press the **PREVIOUS/NEXT** button to select a .txt file, and press the **MENU** button to open

the selected file.

- (4) Press the PREVIOUS/NEXT button to page up or page down manually, or press the PLAY/PAUSE button to page up or down automatically (by setting the time interval between 1 and 5 in Settings/Auto Slide show/Text).
- (5) During reading, you can use the bookmark to mark the page for resuming reading later. For information about bookmark, see “Using bookmark” section.

## 11.2 Using bookmark

- (1) Go to the page that you want to mark.
- (2) Briefly press the **VOL+** button to show up a “Save Bookmark” window for saving bookmark.
- (3) Press the PREVIOUS/NEXT button to select a bookmark number and press the MENU button to confirm. The bookmark is saved. It starts from the first line of current page.
- (4) To read the page that you have marked, shortly press the **VOL-** button to show up the “Load Bookmark” window. Press the PREVIOUS/NEXT button to select a bookmark and press the **MENU** button to confirm. You will be guided to that page.

**Note:** *Some TXT files may not be read. This may be because its format is not supported. Skip it or reload another file.*

## 12 Browsing all files

To browse all files stored in the player,

- (1) Press and hold the **MENU** button to display the main menu.
- (2) Select “Explorer”, and press the **MENU** button to enter the browser mode.
- (3) Press **PREVIOUS/NEXT** button to select a file that you want to view, and press the **MENU** button to play or display it.

## 13 Voice Recording

- **Record**

- (1) Press and hold the **MENU** button to display the main menu.
- (2) Select “Record”, and press the **MENU** button to enter the recorder mode.
- (3) Shortly press the **PLAY/PAUSE** button to start recording. During recording, you can press the **PLAY/PAUSE** button to pause or resume recording.
- (4) Shortly press the **MENU** button to stop and save recording. Press and hold the **MENU** button to return to the main menu.

- **Play recordings**

To play the recording,

- (1) Select “Explorer” on the main menu to enter the folder navigate mode.
- (2) Open the “VOICE” folder, and select the recorded file that you want to play.

## 14 Deleting files

To delete a file,

- (1) Select “Explorer” on the main menu to enter the folder navigate mode.
- (2) Briefly press the VOL- button to display a dialogue box.
- (3) Use the PREVIOUS/NEXT button to select “YES” and press the MENU button to confirm.

## 15 FM Radio

On the main menu, select “FM Tuner” and press the **MENU** button to turn on the FM radio.

- **Search Stations**

- (1) Shortly press the **MENU** button to show the submenu.
- (2) Press the PREVIOUS/NEXT button to select “Auto” or “Manual”, and press the **MENU** button to enter the auto-search or manual-search mode. In the Manual mode, press the PREVIOUS/NEXT button to tune in stations.

**Note:** Please plug in the earphones to the player before scanning radio stations.

- **Save stations**

To save the found stations,

- (1) Shortly press the **MENU** button to activate the submenus.
- (2) Press the PREVIOUS/NEXT button to select “mem” and press the **MENU** button to confirm.
- (3) Press the PREVIOUS/NEXT button to select an empty location for the station, and press the **PLAY/PAUSE** button to continue.
- (4) Press the PREVIOUS/NEXT button to select “YES” or “NO”, and press the **PLAY/PAUSE** button to confirm.

- **Listen to Stations**

To listen to saved stations,

- (1) Shortly press the **MENU** button to activate submenus.
- (2) Press the PREVIOUS/NEXT button to select “Preset” menu and press the **MENU** button to enter the PRESET mode.
- (3) In the PRESET mode, press the PREVIOUS/NEXT button to select a saved station for listening.



- **Delete stations**

- (1) Shortly press the **MENU** button to activate submenus.
- (2) Press the **PREVIOUS/NEXT** button to select “Del” menu and press the **MENU** button to continue.
- (3) Press the **PREVIOUS/NEXT** button to select the station that you want to delete, and press the **PLAY/PAUSE** button to continue.
- (4) Press the **PREVIOUS/NEXT** button to select “YES” or “NO”, and press the **PLAY/PAUSE** to confirm.

- **Record FM programs**

When you are listening to a station, you can press and hold the VOL+ button to record your favourite programs. For detail information about recording, see “Record” section.

## 16. Customizing Settings

To customize the player settings:

- (1) On the main menu, select the “Settings” item and press the **MENU** button to enter the system settings mode.
- (2) Press the **PREVIOUS/NEXT** button to select setting item and press the **MENU** button to confirm or press the **PLAY/PAUSE** button to cancel/return.

|       |   |   |
|-------|---|---|
| Music | Repeat mode                                     | Once (Play current track once and then stop)  |
|       |   | Repeat One (Repeat current track)   |
|       |   | Folder (Play all audio files in the current folder and stop after playing)  |
|       |   | Folder Rep. (Repeat all audio files in the current folder)  |
|       |   | Normal (Play all audio files stored in the player and stop after playing all)   |
|       |   | Repeat All (Repeat all audio files stored in the player)  |
|       |   | Intro (Play the first 10 seconds of every audio file)   |
|       | Play mode                                       | Order (Play audio files in order)   |
|       |   | Shuffle (Play audio files randomly)   |
|       | Preset EQ                                       | Normal, 3D, Rock, Pop, Classical, Bass, Jazz, User EQ   |
|       | User EQ set<br>(User-defined equalizer setting) | <ol style="list-style-type: none"> <li>(1) Press the PREVIOUS/NEXT button to switch EQ column.</li> <li>(2) Press the VOL+/VOL- button to adjust the value of the selected column.</li> <li>(3) Repeat pressing the NEXT button until the cursor is on the YES button, and then press the MENU button to confirm.</li> <li>(4) Go to the "Preset EQ" menu, and select "User EQ" to enable the equalizer setting.</li> </ol> |

|                 |   |   |
|-----------------|---|---|
| FM Radio        | Stereo SW<br>(Enable or<br>disable stereo<br>effect)  | On, Off   |
|                 | FM region   | China, Europe, Japan, America   |
| Record          | REC Quality   | High Quality, General Quality   |
|                 | REC Volume  | +1、+2、+3、+4、+5  |
| Auto Slide Show | Text Browse (Set interval between the previous and the next page when the device is in auto page up/down mode.) |   |
|                 | Photo Browse (Set interval between the previous and the next slide in auto slide show mode.)                    |   |
| Display         | Backlight   | 5 seconds, 10 seconds, 15 seconds, 20 seconds, 30 seconds,<br>Always On.                      |
|                 | Brightness (Set the brightness of the screen)   |   |
|                 | Backlight mode  | Normal<br>Power Save (Turn off the screen when there is no activity within a<br>certain time) |
| System          | About - Information about the product   |   |
|                 | Upgrade - Upgrade the firmware  |   |
|                 | Load Default - Restore the player to default setting  |   |

|   |   |
|---|---|
| Sleep Timer<br>(Set the continuous playing time before the player is turned off automatically.) | Off, 10 minutes, 15minutes, 30 minutes, 60 minutes, 120 minutes   |
| Language<br>( Select language in which the on-screen text is displayed)                         | Simplified Chinese, Traditional Chinese, English, Korean, Japanese, Spanish, French, German, Italian, Portuguese, Russian, etc. |

## 17. Troubleshooting

| <b>Problem</b>                                       | <b>Possible Cause</b>  | <b>Solution</b>     |
|--|------------------------|---------------------|
| The LCD displays nothing when the device is started. | Battery is too low.    | Charge the battery. |
| No sound when playing an                             | The volume is too low. | Adjust the volume.  |

|   |  |  |
|---|--|--|
| audio file.   | Bad audio file.  | Delete or skip the file.   |
| The player cannot be connected to the PC.   | The USB interface is not supported by PC's motherboard.  | Update or replace the PC's motherboard.  |
| The displayed time is changing constantly.  | The bit rate of the MP3 file is changing during playback.  | Try to use fixed bit rate to compress the MP3 file.  |
| The PC has error when you plug and unplug the player.                             | The player is disconnected from the PC abruptly while transferring files.                          | Do not disconnect the player from the PC when transferring files.  |
| Total memory displayed on the player is not in accordance with the marked amount. | Part of memory is used to store programs and display characters.                                   |  |
| Some of the MP3 files cannot be played properly.                                  | The MP3 files are compressed by a standard, such as MPEG I Layer 1 or Layer 2 that the player does | <ol style="list-style-type: none"> <li>1. Delete the unsupported MP3 files.</li> <li>2. Use MPEG I Layer 3 standard to compress the</li> </ol> |

|                               |  |   |
|-------------------------------|--|---|
|                               | not support.   | unsupported MP3 files.  |
| The video cannot be played.   | The file format is not supported.                        | Make sure the video is in AVI format. If not, use the provided converting tool to convert it.                               |
|                               | The video data is corrupted.                             | Skip it or reload another file  |
| The photo cannot be displayed | The file format is not supported.                        | Try to use an image editor to convert it or save it as another file.  |
|                               | The image resolution is beyond limitation of the device. | The device supports a maximum resolution of 2048 X 2048. Make sure resolution of the image does not exceed this limitation. |
| The TXT file cannot be read   | The file format is not supported.                        | Skip it or reload another file.   |

## 18. Converting Video To AVI format

**Note:** Before installing the AVI converter, make sure that the Windows OS is installed with DirectX9.0 or above.

Before you download videos to the device, make sure they are AVI files and can be played by the device. If not, convert them using the included converting tool on the driver CD. The following steps show how to convert:

### 1) Install the AVI Converter

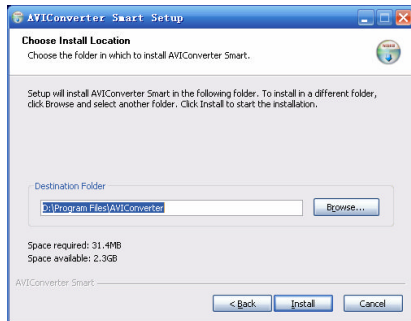
- (1) Place the included CD on the CD-ROM tray of a computer.
- (2) Double click the “AVI converter” folder.
- (3) Run “AVI Converter CHN - EN setup.exe” to show up the following window.



(4) Select an installation interface language.

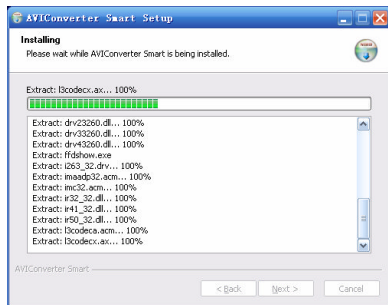


(5) Click "Next" to continue. Browse to a destination for the installation.

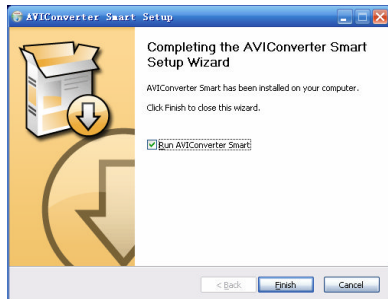




(6) Click “Install” to start installation.

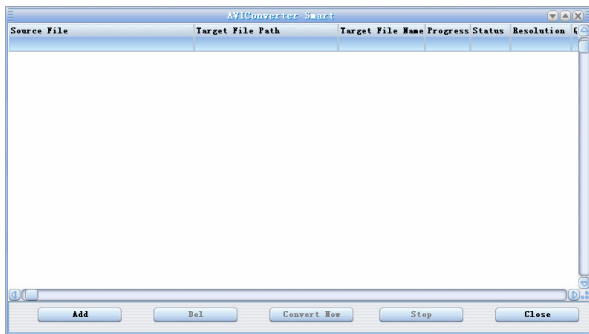



(7) Wait for the installation to be completed before you see the following window. Click “Finish” to finish installation.





## 2) Use the AVI converter

(1) Select “Program files” → “AVI Converter” on the Start menu to see the following window.

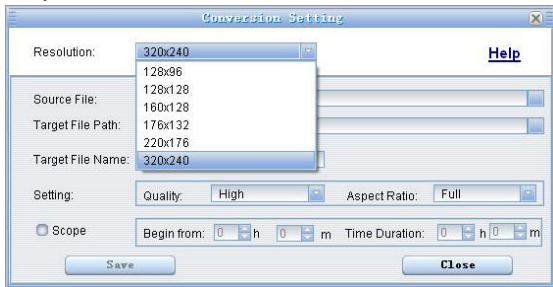


(2) Click  button to display “Conversion Setting” window.

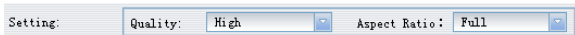
(3) For the “Source File” field, specify the file that you want to convert by clicking the button on the right. For the “Target File Path” field, specify the destination where the converted file is saved.

|                   |                      |   |
|-------------------|----------------------|---|
| Source File:      | <input type="text"/> |  |
| Target File Path: | <input type="text"/> |  |

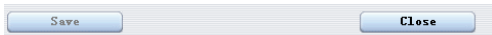
- (4) Be sure to select the correct resolution - 128x128 to match your player's screen, otherwise the conversion may fail.



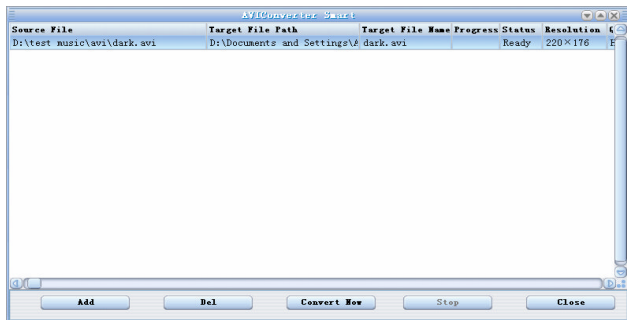
- (5) Set the conversion quality in the Quality field and display mode in the Aspect Ratio field.



- (6) Click "Save" to save your setting. To convert another file, repeat the steps above.
- (7) Click "close" button to close the setting window.



(8) Click “Convert Now” to start converting.



(9) Click “Finish” after the converting is finished.

## 19. Technical Specifications

| Item                            | Specification                   |
|---------------------------------|---------------------------------|
| Capacity                        | 128MB or above                  |
| Battery Type                    | Rechargeable Lithium Battery    |
| Battery Life                    | 8 – 10 hours                    |
| LCD Display                     | 1.5-inch CSTN screen            |
| Earphone Power                  | 5mW+5Mw                         |
| Video Format                    | AVI (XviD)                      |
| Audio Format                    | MP3, WMA                        |
| Photo Format                    | JPEG                            |
| Image Resolution                | 2048 X 2048 (Max.)              |
| Bit Rate                        | MP3: 8-320kbps; WMA: 64-384kbps |
| SNR                             | > 90dB                          |
| USB Port                        | USB2.0                          |
| Operational Temperature         | 0°C ~ +55°C                     |
| Storage Temperature             | -20°C ~ +55°C                   |
| Operational Relative Humidity * | 20% ~ 90% (40°C)                |
| Storage Relative Humidity *     | 20% ~ 93% (40°C)                |

## 20. Notice

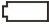
- Make sure all keys are enabled before operation. If they are locked, hold down the MENU and VOL- button to unlock them.
- Please charge the battery immediately when the display indicates low battery, or the device will be powered off automatically.
- Please disconnect the player from PC properly to avoid data loss.
- The transfer rate displayed on the PC may be different depending on the operating system. Exact transfer rate should be subject to the player's indication.

## 21. Listening Cautions

- Do not play your earphones or headphones at a high volume. Hearing experts advise against continuous extended play.
- If you experience a ringing in your ears, reduce volume or discontinue use.
- Do not use while operating a motorized vehicle. It may create a traffic hazard and is illegal in many areas.
- You should use extreme caution or temporarily discontinue use in potentially hazardous situations.
- Even if your headphones or earphones are the open-air type designed to let you hear outside sounds, don't turn up the volume so high that you can't hear what's around you.

- Sound can be deceiving. Over time your hearing “comfort level” adapts to higher volumes of sound. So what sounds “normal” can actually be loud and harmful to your hearing. Guard against this by setting your equipment at a safe level BEFORE your hearing adapts.  
To establish a safe level:
  - a. Start your volume control at a low setting.
  - b. Slowly increase the sound until you can hear it comfortably and clearly, and without distortion. Once you have established a comfortable sound level, leave it there.

## 22. Precautions

- 1). When not using the player for an extended period of time, please charge the battery at least once per month to extend the battery life.
- 2). Do not use the player in extremely hot, cold, dusty or damp environments.
- 3). Make sure the keys are unlocked before using the player (otherwise controls will not function).
- 4). Avoid dropping or striking the unit .This may cause external and internal physical damage to the player.
- 5). Charge the battery if:
  - a) The battery level icon displays  (An empty battery)
  - b) The player powers off automatically and off again when restarted.
  - c) No response when pressing keys with keys unlocked and battery installed
- 6).To prevent damage from static shock, never use the player in very dry conditions.

- 7). When player is being formatted or transferring a file, do not interrupt the connection. Otherwise, data may be corrupt or lost.
- 8). When the player is used as a portable HD, please use only per instructions. Otherwise, permanent data loss could occur.



**FCC Caution:** this equipment has been tested and found to comply with the limits for Class B digital device, pursuant to part 15 of the FCC Rules. These limits are designed to provide reasonable protection against harmful interference in a residential installation. This equipment generates, uses and can radiate radio frequency energy and, if not installed and used in accordance with the instructions, may cause harmful interference to radio communications. However, there is no guarantee that interference will not occur in a particular installation. If this equipment does cause harmful interference to radio or television reception, which can be determined by turning the equipment off and on, the user is encouraged to try to correct the interference by one or more of the following measures:

- Reorient or relocate the receiving antenna.
- Increase the separation between the equipment and receiver.
- Connect the equipment into an outlet on a circuit different from that to Which the receiver is connected.
- Consult the dealer or an experienced radio/TV technician for help.

**FCC Compliance:**

- To assure continued compliance, follow the attached installation instructions.
- Use only the provided shield interface cables when connecting to computer.

Any unauthorized changes or modifications to this equipment would void the user's authority to operate this device.

This device complies with part 15 subpart B of the FCC Rules. Operation is subjected to the following conditions:(1)This device may not cause harmful interference, and(2)This device must accept any interference received, including interference that may cause undesired operation.

This product may receive radio interference caused by mobile telephones or other products during operation. If such interference is apparent, please increase separation between the product and the mobile telephone or other product.

**Industry Canada Requirement:**

This Class B apparatus complies with Canadian ICES-003.

Cet appareil numérique de la classe B est conforme á la norme NMB-003 du Canada.

Other names of systems and products mentioned in these instructions are usually the registered trademarks or trademarks of the manufacturers who developed the system or product concerned. The ™ and ® marks are not used to identify registered trademarks and trademarks in these instructions.

This manual was correct and complete at the time of printing. However, specifications and updates can occur at any time without prior notice. No part of this manual may be copied, republished, reproduced, transmitted, or distributed in any way without prior written consent of Nextar, Inc. Any unauthorized distribution of this manual is expressly forbidden.

© 2008 Nextar (Hong Kong) Limited. Nextar is a trademark and service mark of Nextar (Hong Kong) Limited. All other brand names, trademarks and service marks are property of their owners.

Nextar may find it necessary to modify, amend or otherwise change or update this manual. We reserve the right to do this at any time, without any prior notice. All specifications and features are subject to change without notice. All screen shots shown are simulated and may not represent the actual screen on production units sold to consumers.

For instruction manuals, updated drivers or other information, be sure to visit our website at:

[www.Nextar.com](http://www.Nextar.com)

Or write to us at:

Nextar

1661 Fairplex Dr.

La Verne, CA 91750

USA

Copyright © 2008