

Industio CI-134 Series User's Manual

Industrial 4 Port RS-422/RS-485 Serial Board

Mar. 1999 (1st Edition)

The content of this manual is also available at Moxa Web Site.



Moxa Technologies Co., Ltd.

Tel: +866-2-8665-6373

Fax: +886-2-8665-6372

www.moxa.com

support@moxa.com.tw

Industio CI-134 Series User's Manual

The product described in this manual is furnished under a license agreement and may be used only in accordance with the terms of the agreements.

Copyright Notice

Copyright © 1999 Moxa Technologies Co., Ltd.

All rights reserved.

Reproduction in any form without permission is prohibited.

Trademarks

MOXA is a registered trademark of Moxa Technologies Co., Ltd.

All other trademarks or registered marks in this manual belong to their respective manufacturers.

Disclaimer

Information in this document is subject to change without notice and does not represent a commitment on the part of Moxa.

Moxa provides this document “as is”, without warranty of any kind, either expressed or implied, including, but not limited to, the particular purpose. Moxa may make improvements and/or changes in this manual or in the product(s) and/or the program(s) described in this manual at any time.

Information provided in this manual is intended to be accurate and reliable. However, Moxa Technologies assumes no responsibility for its use, or for any infringements of rights of the fourth parties which may result from its use.

This product could include technical or typographical errors. Changes are periodically made to the information herein; these changes may be incorporated in new editions of the publication.

MOXA Internet Services

Customer's satisfaction is always our number one concern. To ensure that customers get the full benefit of our services, Moxa Internet Services have been built for technical support, product inquiry, new driver update, user's manual update, etc.

The followings are the services we provide.

E-mail for technical support

address: *support@moxa.com.tw*

FTP site for free driver update

address: *ftp.moxa.com*

or

ftp.moxa.com.tw

user ID: *ftp*

password: *your_email_address*

World Wide Web (WWW) Site for product info

address: *www.moxa.com*

or

www.moxa.com.tw

About this Manual

This manual is composed of six chapters and one appendix. This manual is written for installers, system administrators and software programmers.

If you are a first-time installer and system administrator, we recommend you to go through the whole manual except chapter 4.

If you are a software programmer, you may refer to chapter 4, “Serial Programming Tools”.

If you need cable wiring information, please see the “Connection Cable and Cable Wiring” chapter.

If you encounter any problem during the installation, please refer to the “Troubleshooting” chapter.

Chapter 1 Introduction

Overview and features of the Industio CI-134 Series boards, list of items and overall installation guide.

Chapter 2 Hardware Installation

Hardware installation for the Industio CI-134 Series boards and connection cable. Hardware configuration utility, Io-irq.exe, is detailed.

Chapter 3 Software Installation

Software installation, configuration, driver loading/unloading, driver update and removal for various operating systems: Windows NT, Windows 95/98, DOS and Windows 3.x.

Chapter 4 Serial Programming Tools

Short description of the programming tools, *PComm*, under Windows NT and Windows 95/98 and API-232 under DOS and Windows 3.x. Also RS-485 programming issue is covered.

Chapter 5 Connection Cable and Cable Wiring

Description of the RS-422 and RS-485 cable wiring for the connection cable.

Chapter 6 Troubleshooting

Common problems and possible answers for the Industio CI-134 Series boards.

Appendix

Specification details, UART and I/O port address map.

Table of Contents

Introduction	1-1
Overview	1-1
Features	1-4
Check List.....	1-5
Installation Guide.....	1-6
Hardware Installation	2-1
First Thing to Do: Interface Settings.....	2-1
Quick Hardware Installation	2-2
<i>How to Do Quick Hardware Installation.....</i>	<i>2-3</i>
Hardware Installation with IO-IRQ Utility	2-4
<i>IO-IRQ Utility and Hardware Configuration.....</i>	<i>2-5</i>
Software Installation	3-1
Windows NT	3-1
<i>Installing Driver</i>	<i>3-2</i>
<i>Configuring Board and Port</i>	<i>3-7</i>
<i>Updating Driver</i>	<i>3-9</i>
<i>Removing Driver.....</i>	<i>3-9</i>
Windows 95/98	3-10
<i>Installing Driver</i>	<i>3-10</i>
<i>Configuring Board and Port</i>	<i>3-14</i>
<i>Updating Driver</i>	<i>3-15</i>
<i>Removing Driver.....</i>	<i>3-16</i>
DOS	3-17
<i>Installing Driver.....</i>	<i>3-17</i>
<i>Driver Setup</i>	<i>3-18</i>
<i>Loading Driver</i>	<i>3-23</i>
<i>Unloading Driver.....</i>	<i>3-23</i>
Windows 3.x	3-24
<i>Installing Driver.....</i>	<i>3-24</i>
<i>Configuring Driver.....</i>	<i>3-26</i>
<i>Removing Driver.....</i>	<i>3-27</i>
<i>Baud Rate Settings.....</i>	<i>3-27</i>
Serial Programming Tools	4-1

Windows NT and Windows 95/98	4-1
<i>PComm Installation</i>	4-1
<i>PComm Programming Library</i>	4-2
<i>Utilities</i>	4-2
DOS	4-5
<i>Installing API-232</i>	4-5
<i>DOS API-232 Library</i>	4-5
<i>Utilities</i>	4-5
Windows 3.x	4-8
<i>Windows COMM API Library (Win16)</i>	4-8
<i>Utility</i>	4-8
<i>Existing Applications</i>	4-9
RS-485 Programming.....	4-10
<i>Automatic Data Direction Control Mode (Recommended)</i>	4-10
<i>By RTS Mode (For back-compatibility)</i>	4-10
Connection Cable and Cable Wiring.....	5-1
RS-422 Cable Wiring.....	5-1
RS-485 Cable Wiring.....	5-3
Impedance Matching and Termination Resistors.....	5-4
DB-37 Connector Pin Outs.....	5-5
Troubleshooting.....	6-1
General Troubleshooting.....	6-1
Windows NT	6-4
Windows 95/98.....	6-5
DOS	6-6
Technical Reference	A-1
Specifications	A-1
UART TI550C	A-2
PC I/O Port Address Map.....	A-3

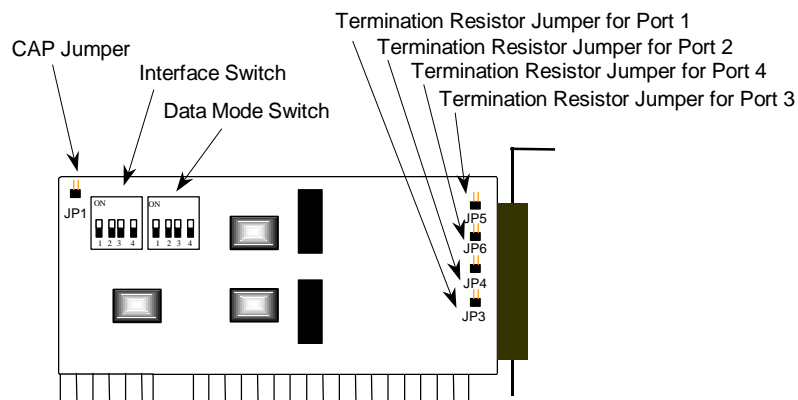
Introduction

Overview

Industio - The Industrial Multiport Async Solution

The term **Industio** stands for smart multiport serial I/O solution for industrial applications. The **Industio CI-134 Series boards, including CI-134, CI-134I and CI-134IS**, are designed for 16-bit ISA/EISA bus. They offer 4 independent RS-422/RS-485 serial ports. It offers reliable communication link over a longer distance (4000ft). It is best suitable for industrial environment.

Connections with **point-to-point full-duplex** or **multidrop half-duplex** are available to meet your needs. Each port can connect up to 64 devices, such as data acquisition equipment and many other serial devices, to the PC and its compatible systems in a multidrop environment.



Industio CI-134 Series Board

Automatic Data Direction Control for RS-485

To ease the 2-wire RS-485 half-duplex control, Automatic Data Direction Control intelligence is built on each Industio CI-134 board. Eliminating the need of software interference. Hence, the applications can manage the RS-485 port without extra code to control the half-duplex protocol.

Termination Resistors Ready for RS-422/RS-485

Termination Resistors are already installed on the Industio CI-134 boards and no more headaches for finding proper resistors and connecting them for impedance matching problem. More details are in chapter, “Connection Cable and Cable Wiring”.

Surge/Isolation Protection

To meet the demand of high reliability in industrial environment and to prevent the boards from damage caused by lightning or high potential voltage, an optical isolation option (2KV) and surge block option (2KV) are available. This is critical to harsh environment such as factory.

ASIC Design, Compact Size

The Industio CI-134 Series is equipped with MOXA customer-designed ASIC chip, which replaces lots of conventional IC and hence reduces the board to half-size, increase the operation performance, and lower the failure rate of the board. Full range of I/O addresses and IRQ numbers are available. In addition, with **on-board EEPROM** for storing the configuration data, the family is designed without jumper or switch. These features make each port on the board truly independent to any other port and thus compatible with most existing non-intelligent boards. Because the family is so flexible in hardware configuration, it is compatible virtually with all kinds of other manufacturer's non-intelligent multiport boards using 16550 UART.

CAP Address

Instead of using traditional jumper or switch for IRQ and I/O address settings, hardware configuration of each port is easily set by DOS utility, **Io-irq.exe**, which read and write the on-board EEPROM for configuration information through the **CAP (Configuration Access Port) address**. The CAP address is the only channel via

which the configuration utility Io-irq.exe can access the board, which is identical to **the first port's base I/O address**.

The CAP jumper, **JP1**, is designed in case of that users forget the CAP address. Normally JP1 is left open. When JP1 is short, the CAP address is forced to a fixed I/O address, **0xA700**. While doing quick hardware installation, JP1 is required to be shorted, detailed in chapter, "Hardware Installation".

Quick Installation

To ease the hardware configuration, users who install **only one Industio CI-134 Series board under Windows NT and 95/98** are recommended to adopt **quick installation** described in chapter 2, "Hardware Installation".

Operating System Support

The family is operational under most popular operating systems such as Windows NT, Windows 95/98, DOS, SCO UNIX/XENIX/OpenServer, Linux, QNX, FreeBSD, etc. However, **MOXA device drivers** for Windows NT, Windows 95/98, DOS and Windows 3.x are provided for better installation, configuration and performance. In this manual, chapters for MOXA **Windows NT, Windows 95/98, DOS and Windows 3.x** device drivers are described. For those compatible systems not mentioned, please refer to system's manual for how to install and configure the standard driver.

MOXA Serial Comm Tools

For application development, MOXA provides an easy-to-use serial communication library under Windows NT, Windows 95/98 (**PComm**), DOS and Windows 3.x (**API-232**). Users can use this library to develop your own applications using Microsoft C, Turbo C, Assembly, QuickBASIC, Turbo Pascal, Clipper, Visual Basic, Visual C++, Borland Delphi, etc. Utilities, such as Data Scope, Monitor, Terminal Emulator, Diagnostics, etc., are included for debugging or monitoring the communication status or terminal emulation or even file transferring.

Broad Applications

The board is suitable for many industrial applications. Here are a few:

- } Multi-point data acquisition
- } Industrial Automation
- } Factory Automation
- } Remote serial device control

Features

The Industio CI-134 Series consists of members as follows,

CI-134 4 RS-422/RS-485 ports, TI550C UART

CI-134I 4 RS-422/RS-485 ports, isolation protection, TI550C UART

CI-134IS 4 RS-422/RS-485 ports, surge and isolation protection, TI550C UART

The following are the outstanding features of Industio CI-134 Series

- % Support 4 independent RS-422 or RS-485 serial ports
- % Standard COM port compatible
- % High circuit integration with state-of-the-art ASIC design, compact half-size
- % No I/O switch, no IRQ jumper, easily configured by software
- % Independent I/O address, IRQ setting for each of 4 serial ports
- % Switch for RS-422/RS-485 selection
- % 2-wire RS-485 operation
- % Switch for RS-485 data direction control» Automatic Data Direction Control Mode or By RTS Mode
- % Jumpers for Termination Resistor selection, no more headache for impedance matching
- % Reliability» High speed TI550C Communication Controllers with on-chip hardware flow control guarantees no data loss
- % Support isolation or surge protection
- % Powerful Serial Comm tools» *BComm* and API-232
- % Support major OS» Windows NT, Windows 95/98, DOS, Windows 3.x
- % Compatible with many other OS » SCO UNIX/XENIX, QNX, Linux, FreeBSD, OS/2

CI-134 Series

Windows NT	D
Windows 95/98	D
DOS	D
Windows 3.x	D
Linux	R
SCO UNIX/OpenServer	C
SCO XENIX	C
QNX	C
FreeBSD	C
OS/2	C

D: Driver supported by Moxa and shipped with product

R: Driver shipped by request

C: Driver supported by OS

Note: Download the newest drivers from the MOXA FTP service

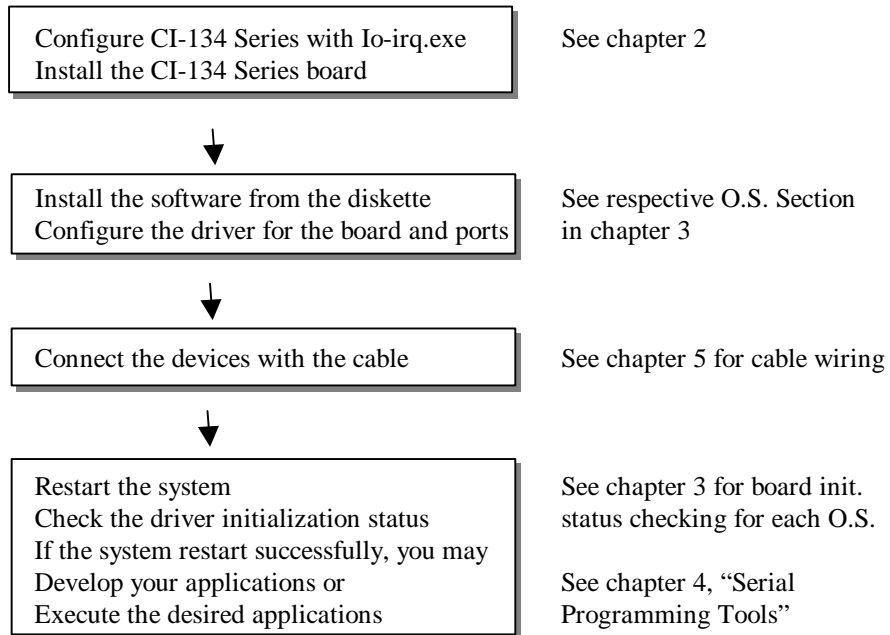
Check List

Upon unpacking the Industio CI-134 Series package, you can find the following items:

- %o Industio CI-134 Series 4 port serial board
- %o Device driver diskettes:
 - } Windows NT and Windows 95/98» ☺
 - } ***PComm Lite***» ☺
 - } DOS/Windows 3.x driver» ☺
- %o Industio CI-134 Series User's Manual (This manual)
- %o Fan out cable DB-37 to DB-9» ☺

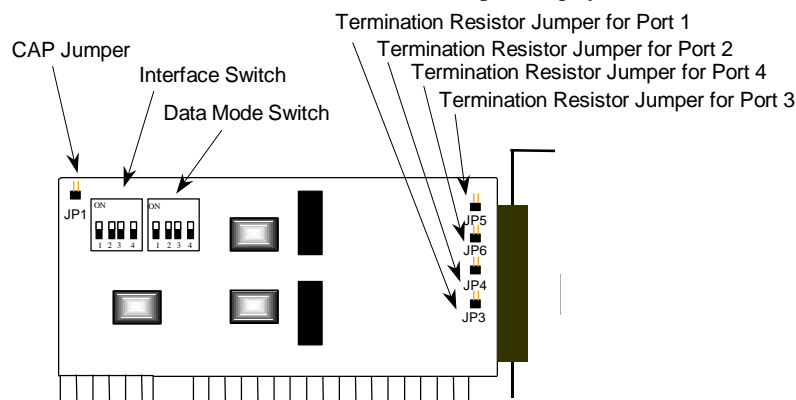
Installation Guide

This section gives a brief summary of how to install the Industio CI-134 Series under each supported operating system. The installation is simple and involves the following stages:



Hardware Installation

The installation of the Industio CI-134 Series consists of hardware and software installation. The hardware installation is detailed in this chapter. The next chapter deals with the software installation for various operating systems.



Industio CI-134 Series Board

First Thing to Do: Interface Settings

1. Before installing the board into the slot, you should set all the jumpers and switches to what you want. **The default (factory) settings are set to RS-485, Auto Data Direction Control mode, indicated as *.**

} CAP Jumper JP1:

Open * Not forcing the CAP address to 0xA700.

Short Force the CAP address to 0xA700. **Set to this if you want to do quick hardware installation.** Or forget the CAP address when you want to re-configure the board with IO-IRQ.

-
- } Interface Selection Switch SW2 for Port 1/2/3/4:
 - ON** * Set the port interface to RS-485.
 - OFF** Set the port interface to RS-422.
 - } Data Mode Selection Switch SW1 for Port 1/2/3/4: **(Valid if SW2 is ON)**
 - ON** * Set the RS-485 port to Automatic Data Direction Control Mode.
 - OFF** Set the RS-485 port to By RTS Mode.
 - } Termination Resistor Port 1/2/3/4 Jumper JP3/4/5/6: **(Valid if SW2 is ON)**
 - Open** * Not using Termination Resistor
 - Short** Using Termination Resistor

In addition, it has the following default settings for I/O addresses and Interrupt number:

I/O address: **0x180** (Port 1), **0x188** (Port 2), **0x190** (Port 3), **0x198** (Port 4)
IRQ: **10**
INT Vector: **0x1C0**

Note! If the default settings above are what you desired and good for the system without conflicts, you may simply install the board in the system and go directly to the next chapter, “Software Installation”. Otherwise, follow the instructions below.

2. After you set all the jumpers and switches, you should do either **the normal hardware installation** (detailed in the later section, “Hardware Installation with IO-IRQ Utility”) or **the quick hardware installation** (detailed right in the next section, “Quick Hardware Installation”). The latter is provided to facilitate the hardware installation, only under the circumstances that:
 - } **Only one Industio CI-134 Series board** is allowed to install in a system.
 - } **Windows NT and 95/98** are the only operating systems supported.
 - } **CAP Jumper JP1 is short** and I/O address **0xA700** must be free.

Quick Hardware Installation

To fully utilize the superior feature of flexible hardware configuration design of the Industio CI-134 Series, a quick and easy method of installation is designed, which absolutely saves you from hardware configuration effort, i.e., **installation WITHOUT running configuration program: Io-irq.exe. Simply always short the**

CAP jumper JP1. The software and hardware configuration will be completed at the same time while doing the software configuration, detailed in the next chapter. Of course, the method is valid only under the previously described circumstances.

Besides, the speed range will be set to **from 50 to 921.6K bps by default**, which is called **High Speed Spectrum** and detailed in section "Hardware Installation with IO-IRQ Utility".

How to Do Quick Hardware Installation

1. **Short the jumper JP1** on the upper-left corner of the board.
2. Plug the board in PC with the desired system installed (Windows NT or 95/98), which is powered off in advance.
3. Do software (driver) installation, detailed in the next chapter.

This is to specify the desired I/O address, IRQ and INT Vector in the software configuration panel, no matter what hardware settings are on the board. The software configuration program will automatically update the hardware settings.

After this, users already complete the whole installation.

4. Shutdown the system (Windows NT or 95/98).
5. Do power off and then on (or Reset) the PC. (**Please cold start.**)
6. Restart System (Windows NT or 95/98).

It is very important to keep the JP1 always short in this case. Without running the hardware configuration program, Io-irq.exe under DOS prompt, the software configuration program will automatically update the hardware settings of the board while updating the software settings. This saves the trouble doing hardware configuration. However, remember to **cold start the system every time the configuration changed.**

Hardware Installation with IO-IRQ Utility

This section is for those who can not use quick hardware installation:

- } Install two or more Industio CI-134 Series boards in a system.
- } Fail to install, due to the I/O address 0xA700 is not available or has conflict in the system.
- } Use operating systems other than Windows NT and 95/98.

Before proceeding to the **software (driver) installation**, detailed in the next chapter, “Software Installation”, do **hardware configuration** to setup the I/O and IRQ with “**Io-irq.exe**”, detailed in the next section.

Remember to keep the hardware settings in mind for the software installation.

Because the ASIC-designed Industio CI-134 Series has no switch and no jumper for manually configuring the I/O address, IRQ, INT Vector, etc. of the boards, you **must** run the software utility, **Io-irq.exe**, in the driver diskette under **DOS** system to change the hardware configuration.

1. Choose a PC that has **DOS** system inside.
2. Power off the PC.
3. Make sure no hardware conflict and plug the board in a free 16-bit slot of the PC, **one board at a time with JP1 open**.

< If you are installing multiple boards, insert one board at a time and configure it using the Io-irq program before inserting the next board. This is to prevent conflict between two boards with same default hardware settings.

The Industio CI-134 Series has the following default (factory) settings,
I/O address: **0x180** (1st port), **0x188** (2nd port), **0x190** (Port 3), **0x198**
(Port 4)
IRQ: **10**
INT Vector: **0x1C0**
Configuration Access Port (CAP): **0x180**

4. Power on the PC and enter into **DOS** system.
5. Run the utility “**Io-irq.exe**” contained in the driver diskette to set up I/O address, IRQ and INT vector of the board. Please refer to the next section, “IO-IRQ Utility and Hardware Configuration” for more details. Or follow the on-line help to configure the Industio CI-134 Series board.

After completing the hardware configuration, the board is ready for use under operating systems, such as Windows NT, 95/98, 3.x, DOS, etc.

IO-IRQ Utility and Hardware Configuration

Note that the CAP address, e.g. 0x180, is identical to **the first port's I/O address** except in one case that the JP1 jumper is installed before powering on the PC. In this case, the CAP address will be forced to **0xA700**. The CAP address must be typed correctly. With the correct CAP address, the utility can find the configuration stored in the **on-board EEPROM** and display it on the configuration panel. The CAP address is the only channel via which the configuration utility Io-irq.exe can access the board.

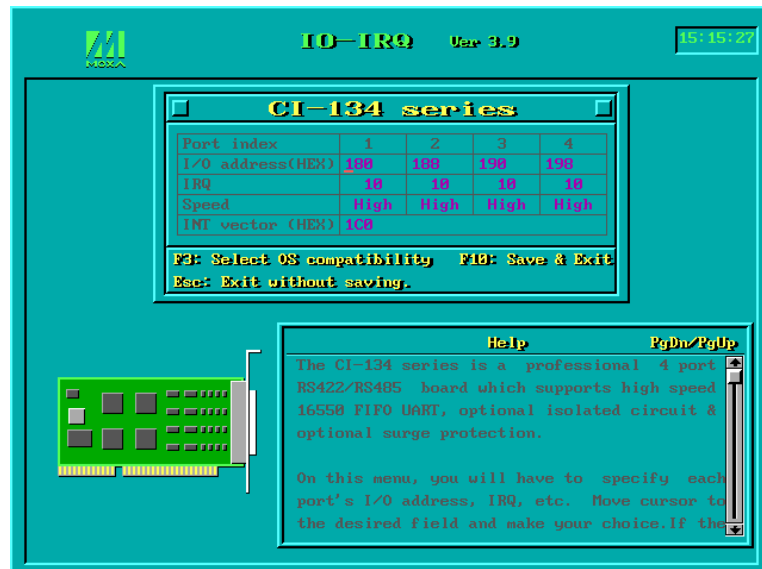
1. Run the utility “**Io-irq.exe**” contained in the driver diskette to set up I/O address, IRQ and INT vector of the board. Select “**Smartio/Industio ISA Family**” and press **ENTER** in the following dialog box.



2. Enter the **CAP address** of the Industio CI-134 Series board to be configured in the following dialog box and press **Enter**.

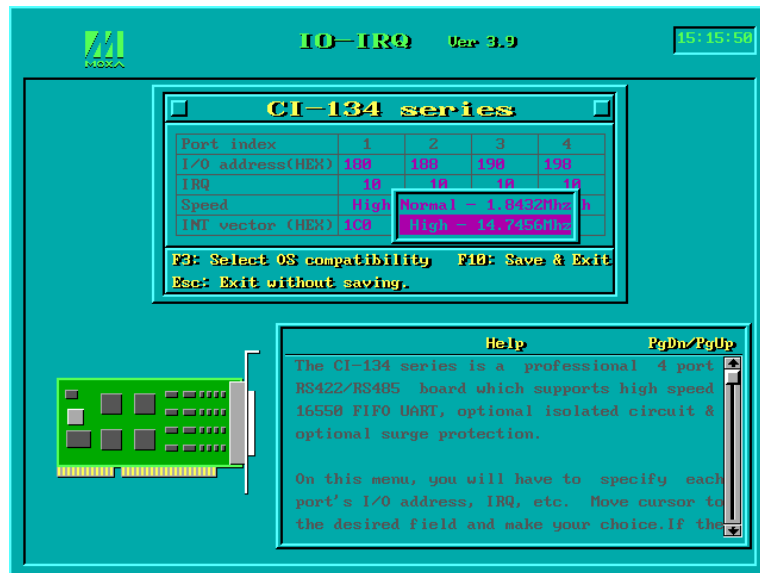


3. In the configuration dialog box, configure the following parameters as necessary.



The followings are fields for configuration.

- Port Index** Indicate the port index for each port.
- I/O address** Enter the base I/O address for each port, either sequentially or not. Avoid to conflicting with any other devices.
- IRQ** Enter the IRQ, 2, 3, 4, 5, 7, 10, 11, 12 or 15, for each port, independently or not.
- Speed** This field specifies the use of **normal or high speed** capability. Normal speed ranges from 50 bps to 115.2 Kbps. High speed ranges from 50 bps to 921.6 Kbps. Industio CI-134 Series supported both normal and high speed spectra.



Note that, currently, port that uses **MOXA Windows NT and 95/98 driver** will run at the displayed speed. To be clear, when Industio CI-134 Series board is configured as **High Speed Spectrum**, any port driven by the **Moxa-provided Windows NT and 95/98 driver** will display the exact working speed. For example, the displayed speed 38.4 Kbps is equal to the working speed 38.4 Kbps.

However, if the port is driven by **NON Moxa-provided driver**, such as **standard serial driver**, or Moxa drivers other than Windows NT and 95/98, such as **DOS** and **Windows 3.x**, the real working speed is equal to **8 times** of the displayed speed. For example, a port, if set to Normal Speed Spectrum with 38.4 Kbps, will work at 38.4 Kbps for sure; while a port, if set to High Speed Spectrum with displayed speed 38.4 Kbps, will actually work at 307.2 Kbps (38.4 Kbps» 8).

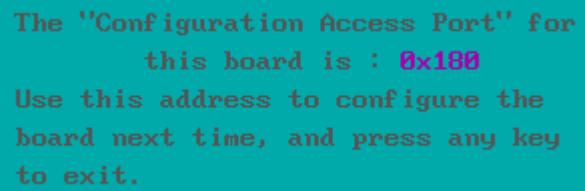
The following is the **8 times speed mapping list** for quick reference purpose, **particularly for DOS and Windows 3.x driver**.

Normal Speed Spectrum	High Speed Spectrum
50 (bps)	400 (bps)
75	600
110	880
134.5	1076
150	1200
300	2400
600	4800
1200	9600
1800	14.4K
2400	19.2K
4800	38.4K
7200	57.6K
9600	76.8K
19.2K	153.6K
38.4K	307.2K
57.6K	460.8K
115.2K	921.6K

INT Vector Enter the interrupt vector I/O address for all ports. I/O address for interrupt vector is from 00000H to 0FFFFH. Interrupt vector is one byte of I/O address, in which each bit is used to indicate the occurrence of interrupt for corresponding port.

There are two modes for the Industio CI-134 Series driver. One is using interrupt vector, the other is not. To use interrupt vector, type in the hardware interrupt vector I/O address. If not using interrupt vector, type 0 or leave blank as the interrupt vector. Driver employing interrupt vector scheme is supposed to have better performance than employing polling scheme.

4. Press **F10** to save the configuration and exit the utility.



The "Configuration Access Port" for
this board is : **0x180**
Use this address to configure the
board next time, and press any key
to exit.

3

Software Installation

In this chapter, the software driver installation, configuration and driver update/removal procedures are described for various operating systems, including Windows NT, Windows 95/98, DOS and Windows 3.x. Before proceeding with the software installation, complete the hardware installation, detailed in previous chapter, “Hardware Installation”.

If it is necessary for you to develop your own applications, please also refer to the next chapter, “Serial Programming Tools”, for programming issues.

Windows NT

Windows NT supports up to **256** serial ports, from **COM1** to **COM256**. To fully integrate the advanced features of Windows NT, multi-process and multi-thread, pure 32-bit Windows NT device drivers are developed for the Industio CI-134 Series multiport boards. The driver conforms to Win32 COMM API standard.

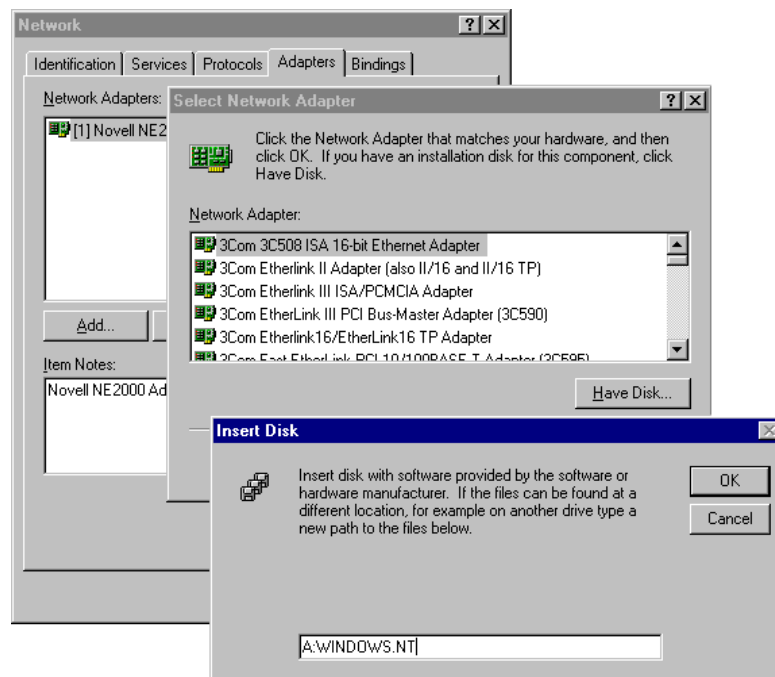
- } To install the driver for the first time, please go directly to the next section, “Installing Driver”.
- } If you already have installed the driver and want to re-configure the board and port, add more boards or delete boards, please refer to the section “Configuring Board and Port”.
- } To update or remove the driver, please go to the section, “Updating Driver” or “Removing Driver”.

Installing Driver

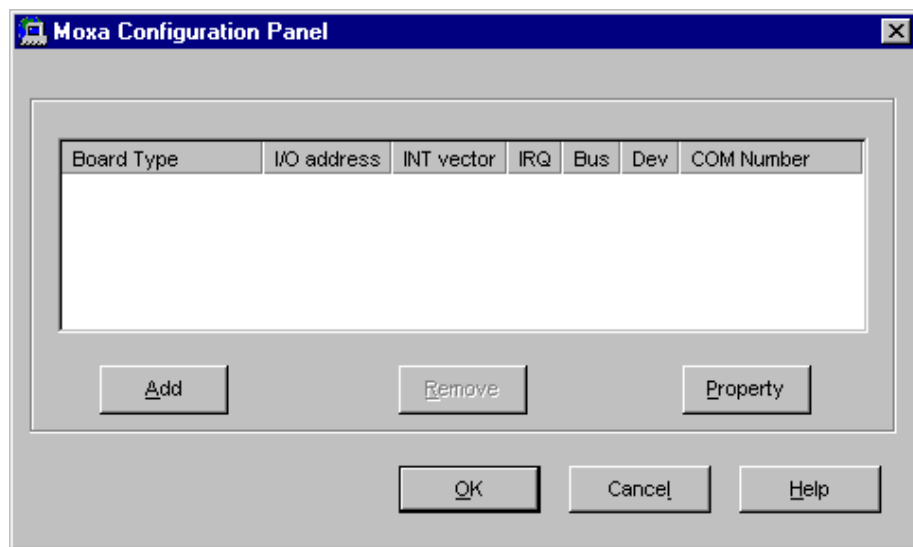
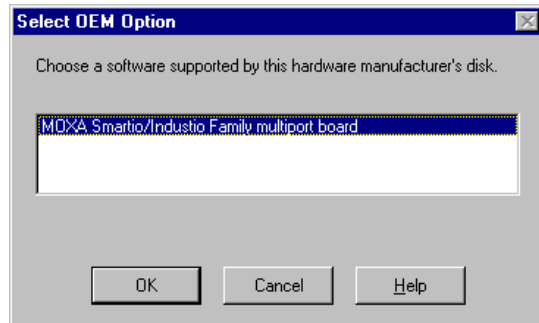
Following is the procedure for installing the Industio CI-134 Series driver **for the first time** under Windows NT 4.0.

Note! *Make sure the board has already been plugged in the system slot if you are doing **quick** installation.*

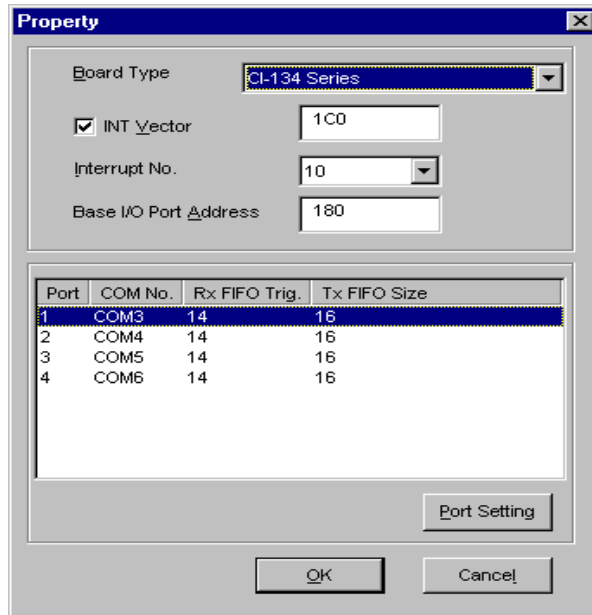
1. Please log in NT as **Administrator**.
2. Open the [Control Panel], click on the [Network] icon and select the [Adapters] tab.
3. Click on the [Add] button, then the [Have Disk...] button in “Select Network Adapter”.
4. Specify the exact path of the driver diskette, **A:\WINDOWS.NT**. Then click [OK].



5. Select **“MOXA Smartio/Industio Family multiport board”** in the **“Select OEM Option”** dialog box, and then click **[OK]** to enter the **“MOXA Configuration Panel”** dialog box to start the installation.

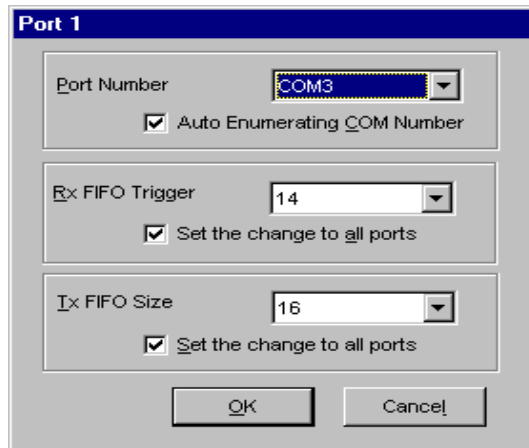


6. In the **“MOXA Configuration Panel”** dialog box, click **[Add]** to enter **“Property”** dialog box to add the Industio CI-134 Series board. Select the **“CI-134 Series”** in the **“Board Type”** field. If necessary, type the desired interrupt vector address, in the **“INT Vector”** field. Select the desired interrupt number in the **“Interrupt No.”** field. Type the desired base I/O address, in the **“Base I/O Port Address”** field. All the settings should match settings that are physically set on the board and conflict with no other devices.



Note! You may go directly to the **step 8** if you need not change any setting.

7. In the “**Property**” dialog box, select the desired port in the port list and click [**Port Setting**] to enter the individual “**Port #**” setting dialog box to change the port number mappings or FIFO settings.



} **Port Number**

You have to set up all the ports of the board with the desired “**COM number**”, which should not conflict with other COM number in use. In this “Individual Port Setting” dialog box, you may have two ways to map the physical ports to COM numbers depending on the check box “**Auto Enumerating COM Number**”.

If “Auto Enumerating COM Number” is checked and specify the COM number of the first port, subsequent ports are mapped to continuous COM numbers. For instance, if first port is mapped to COM3, then second port is mapped to COM4 sequentially.

If “Auto Enumerating COM Number” is not checked, specify the COM number for individual port. For instance, the second port can be out of sequence, say COM10, while the first port is mapped to COM3.

} **Rx FIFO Trigger**

Rx FIFO trigger levels, at 1, 4, 8 or 14 bytes, are available, and the default value is 14 bytes.

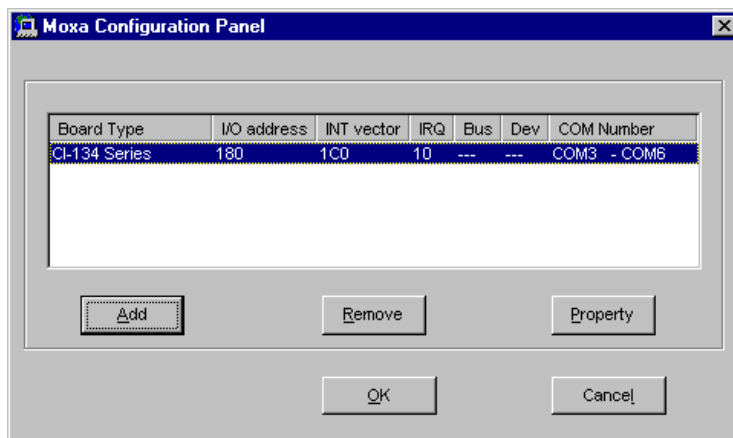
} **Tx FIFO Size**

Tx FIFO sizes from 1 to 16 bytes are available, and the default value is 16 bytes.

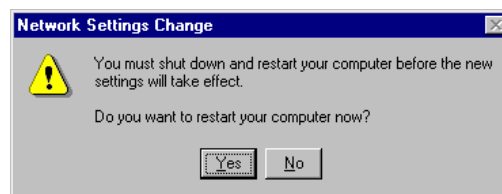
8. Click **[OK]** in the “Port #” and the “Property” dialog boxes to go back to the “MOXA Configuration Panel” dialog box.

<p>Note! If you need to install more than one board, click [Add] and repeat steps 6 to 8 to configure another board. Up to four Industio CI-134 Series boards can be installed in a system.</p>

Click **[OK]** to finish the configuration.



9. When configuration is done, click on [**C**lose] button in the “Network Settings” dialog box.
10. Restart Windows NT system. The latest configuration will not take effect unless the system restarts.



Note! The latest configuration will not take effect unless the system restarts.

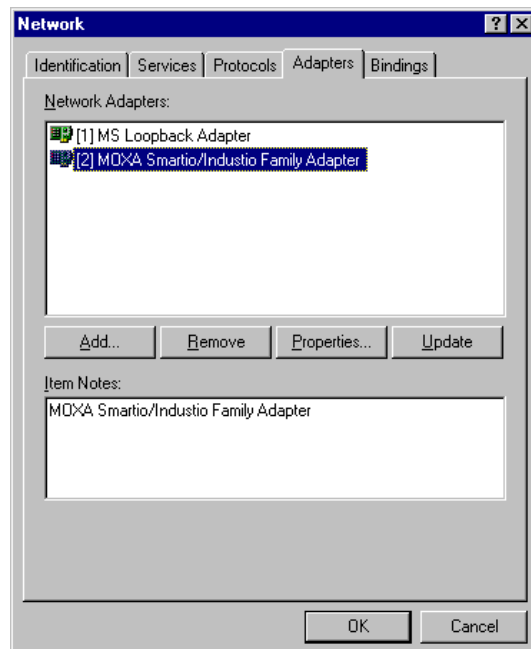
11. Once the system restarts, you may check the event log issued by the MOXA driver to see if the ports of the board are initialized successfully.
 - } Enter the [**A**dministrative] group, click on the [**E**vent Viewer] icon and select [**S**ystem Event Log] to check a message similar to “**MOXA CI-134, with first serial port COM3, has been enabled**” for each configured board.
 - } If an error message similar to “**Cannot find any configured MOXA CI-134 board!**” appears, refer to the “Troubleshooting” chapter for solutions.

Note! Once the board and the driver are installed and the driver restarts successfully, you can start to develop applications with the *PComm* library (See “Serial Programming Tools” chapter) or the Microsoft Win32 API. You can also execute any ready-made applications, such as *PComm* utility Terminal emulator (See “Serial Programming Tools” chapter) or HyperTerminal to transmit/receive data, as well as Remote Access Service to provide dial-up networking capabilities.

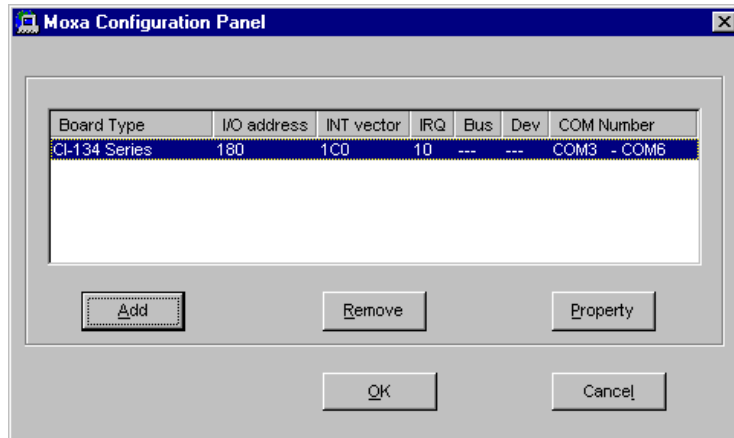
Configuring Board and Port

If you already have installed the driver and want to re-configure the ports, please follow this procedure.

1. In the [Control Panel], click on the [Network] icon and select the [Adapters] tab.
2. Select “MOXA Smartio/Industio Family Adapter” in “Network Adapters”.



-
3. Click on the [**Property**] button to open the “**MOXA Configuration Panel**” dialog box. Please see steps 6-10 in the previous section, “Installing Driver”, for more details.



In this configuration panel, you may:

- } Click [**Property**] to enter “Property” dialog box to configure the selected board with the correct “COM Number”, “INT Vector”, “Interrupt No” and “Base I/O Port Address”. Please see **steps 6 to 8** in the previous section, “Installing Driver”, for more details, except that the “Board Type” field is not supposed to be changed.
- } Click [**Add**] to add one more board that is not yet configured in the system. Please see **steps 6 to 8** in the previous section, “Installing Driver”, for more details.
- } Click [**Remove**] to remove the board currently selected from the configured board list.
- } Click [**OK**] to confirm the configuration changes you made.
- } Click [**Cancel**] to leave the dialog with the configuration unchanged.

Updating Driver

To update the driver for the Industio CI-134 Series board, simply remove the driver, as described in the next section, and reinstall it as detailed in section, “**Installing Driver**”.

Removing Driver

To remove the driver for the Industio CI-134 Series board,

1. Open the [**Control Panel**], click on the [**Network**] icon, and select the [**Adapters**] tab.
2. Select “**MOXA Smartio/Industio Family Adapter**” in the adapter list, then click on the [**Remove**] button and the [**OK**] button to remove the driver.
3. Restart the system to activate the new configuration.

Windows 95/98

Windows 95/98 supports up to **128** serial ports, from **COM1** to **COM128**. To fully integrate the advanced features of Windows 95/98, multi-process and multi-thread, pure 32-bit Windows 95/98 virtual device port drivers (VxD) compliant with communication drivers (VCOMM) are developed for the Industio CI-134 Series and other MOXA multiport boards. The drivers conform to the Win32 COMM API standard.

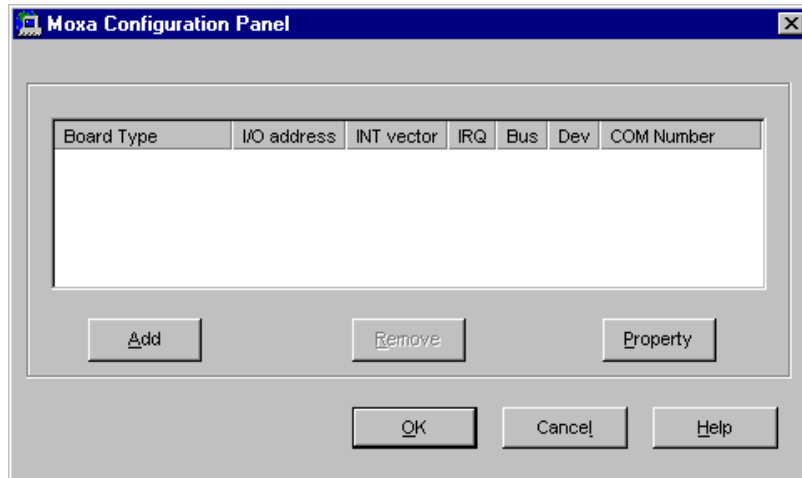
- } To install the driver for the first time driver, please go directly to the section “Installing Driver”.
- } If you already have installed the driver and want to re-configure the board and port, add more boards or delete boards, please refer to the section “Configuring Board and Port”.
- } To upgrade or remove driver, please go to the sections, “Updating Driver” and “Removing Driver”.

Installing Driver

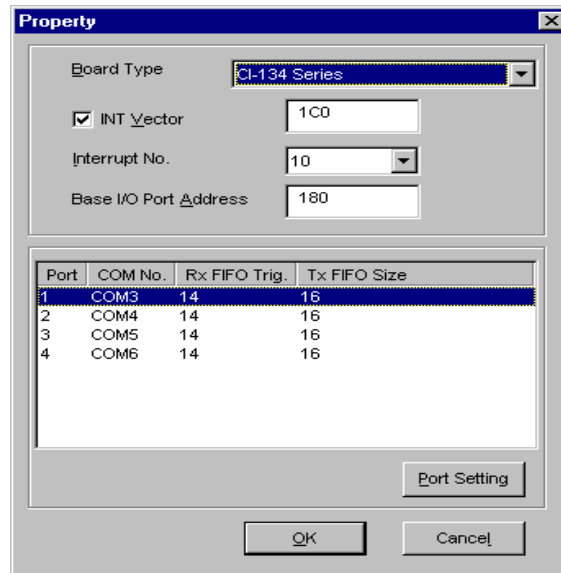
Up to 4 Industio CI-134 Series boards can be installed together as long as the I/O addresses and IRQ number resources are sufficient and available in a system.

The following is the procedure for installing Industio CI-134 Series **for the first time** under Windows 95/98:

1. Run **Setup95.exe** in the driver diskette.
2. Click on [**Next>**] button in the “Welcome ...” message dialog box. And then click on [**Next>**] button in the “Ready ...” message dialog.
3. Click on [**Finish**] button in the “Complete ...” message dialog to enter the configuration panel.
4. The “**MOXA Configuration Panel**” dialog will pop up for you to configure the board and ports.

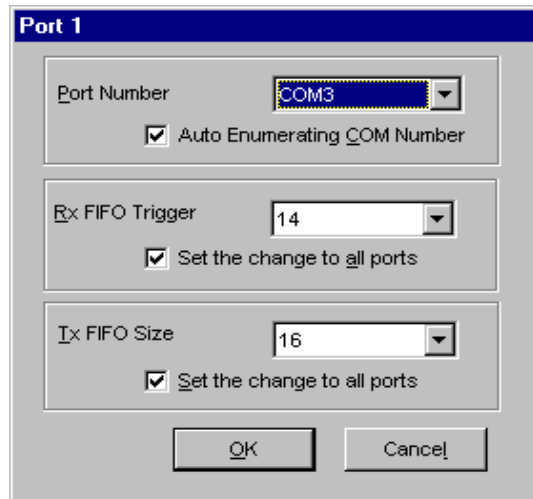


5. In the “MOXA Configuration Panel” dialog box, click [Add] to enter “Property” dialog box to add the Industio CI-134 Series board. Select the “CI-134 Series” in the “Board Type” field. If necessary, type the desired interrupt vector address, in the “INT Vector” field. Select the desired interrupt number in the “Interrupt No.” field. Type the desired base I/O address, in the “Base I/O Port Address” field. All the settings should match settings that are physically set on the board and conflict with no other devices.



Note Go directly to the **step 7** if you need not change any setting.

- In the “**Property**” dialog box, select the desired port in the port list and click [**Port Setting**] to enter the individual “**Port #**” setting dialog box to change the port number mappings or FIFO settings.



} **Port Number**

You have to set up all the ports of the board with the desired “**COM number**”, which should not conflict with other COM number in use. In this “Individual Port Setting” dialog box, you may have two ways to map the physical ports to COM numbers depending on the check box “**Auto Enumerating COM Number**”.

If “Auto Enumerating COM Number” is checked and specify the COM number of the first port, subsequent ports are mapped to continuous COM numbers. For instance, if first port is mapped to COM3, then second port is mapped to COM4 sequentially.

If “Auto Enumerating COM Number” is not checked, specify the COM number for individual port. For instance, the second port can be out of sequence, say COM10, while the first port is mapped to COM3.

} **Rx FIFO Trigger**

Rx FIFO trigger levels, at 1, 4, 8 or 14 bytes, are available, and the default value is 14 bytes.

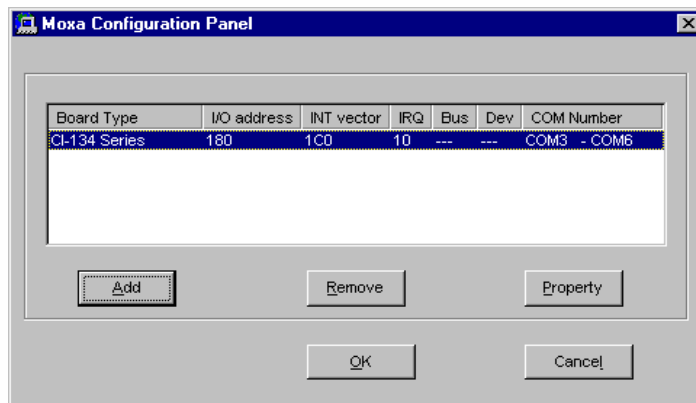
} **Tx FIFO Size**

Tx FIFO sizes from 1 to 16 bytes are available, and the default value is 16 bytes.

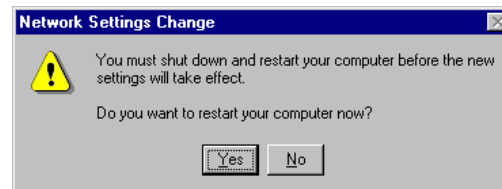
7. Click **[OK]** in the “Port #” and the “Property” dialog boxes to go back to the “MOXA Configuration Panel” dialog box.

Note! If you need to install more than one board, click **[Add]** and repeat steps 5 to 7 to configure another board. Up to four Industio CI-134 Series boards can be installed in a system.

Click **[OK]** to finish the configuration.



8. Restart Windows 95/98 system.



Note! The latest configuration will not take effect unless the system restarts.

9. When system restarts, all the error conditions of the board will be popped up onto the screen if any. Otherwise, everything should be fine.

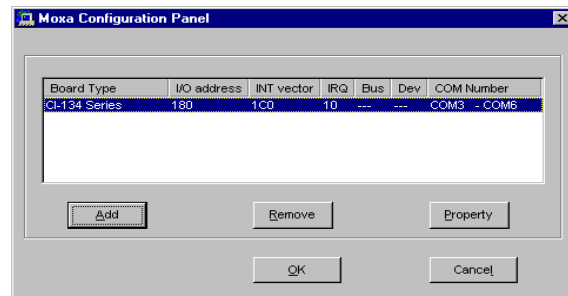
If error message like “**CI-134 Series (CAP=0x0180, port 1=COM3): Board is not found**” appears, refer to chapter, “Troubleshooting”, for solutions.

Note! Once the board and the driver are installed and the driver restarts successfully, you can start to develop applications with the *PComm* library (See “Serial Programming Tools” chapter) or the Microsoft Win32 API. You can also execute any ready-made applications, such as *PComm* utility Terminal emulator (See “Serial Programming Tools” chapter) or HyperTerminal to transmit/receive data, as well as Remote Access Service to provide dial-up networking capabilities.

Configuring Board and Port

If you already have installed the driver and want to re-configure the Industio CI-134 Series board and ports, add more boards or delete boards under Windows 95/98, the following is the procedure for you.

1. Click on the Taskbar [Start] button, then select [Programs] menu, then [MOXA Utilities] menu and then [MOXA Configuration Panel] icon.
2. The configuration panel will be popped up. Please see steps 4-7 in the previous Section “Installing Driver” for more details.

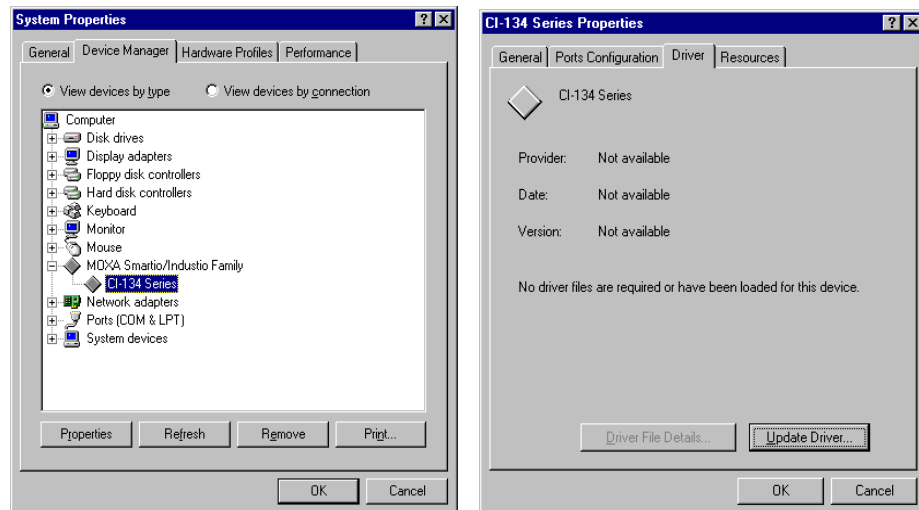


In this configuration panel, you may:

- } Click [**Property**] to enter “Property” dialog box to configure the selected board with the correct “COM Number”, “INT Vector”, “Interrupt No” and “Base I/O Port Address”. Please see **steps 5 to 7** in the previous section, “Installing Driver”, for more details, except that the “Board Type” field is not supposed to be changed.
- } Click [**Add**] to add one more board that is not yet configured in the system. Please see **steps 5 to 7** in the previous section, “Installing Driver”, for more details.
- } Click [**Remove**] to remove the board currently selected from the configured board list.
- } Click [**OK**] to confirm the configuration changes you made.
- } Click [**Cancel**] to leave the dialog with the configuration unchanged.

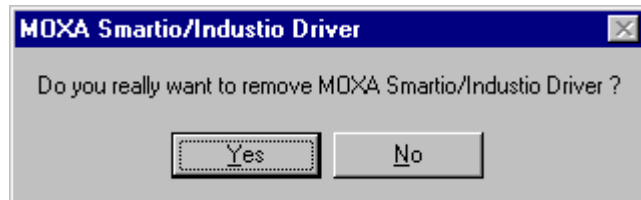
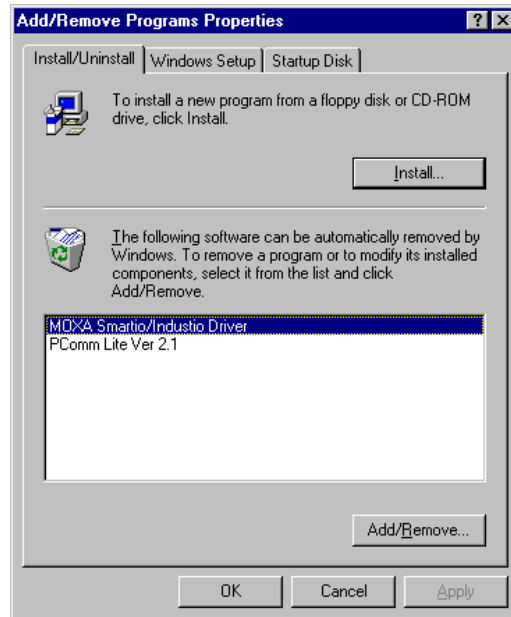
Updating Driver

Open [**Control Panel**] icon, and then [**System**] icon, and then select [**Device Manager**] tab. Then select and open the “**MOXA Smartio/Industio Family**” option and then select the “**CI-134 Series**”. Click on [**Properties**] button and then select [**Device Driver**] tab and then click on [**Update Driver**] button.



Removing Driver

Open [Control Panel] icon, and then [Add/Remove Programs] icon, and then select [Install/Uninstall] tab. Then select and open the “MOXA Smartio/Industio Driver” option and then enter [OK] to remove the driver.



DOS

MOXA DOS API-232 is a software package that assists users to develop and/or debug programs for serial communications. This section will show you how to install the package, how to setup up the driver, and how to load or unload driver.

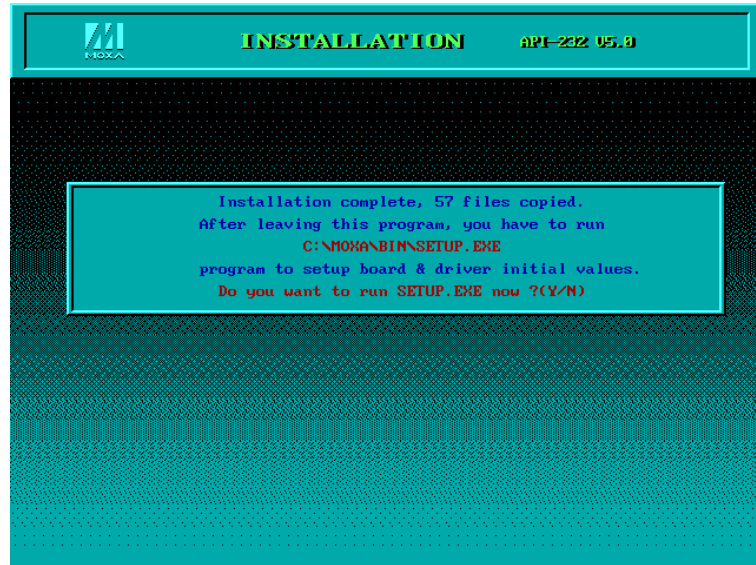
For details of the serial programming (API-232 Library) and utilities, please refer to the next chapter, “Serial Programming Tools”.

Installing Driver

Run the installation program, **DOSINST.EXE**, in the DOS/Windows. 3.x driver diskette. Specify the target API-232 directory (e.g. **C:\MOXA**) where software driver will be copied. Press **F2** to start the installation.



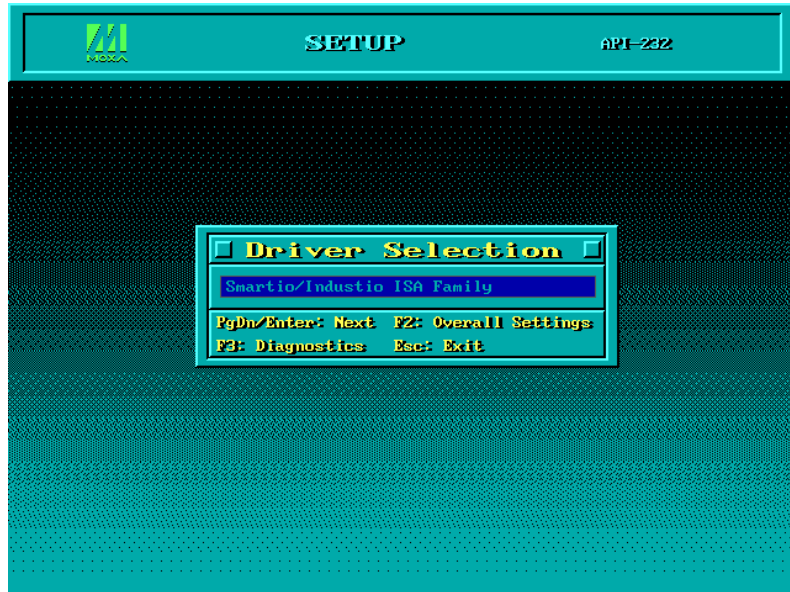
After installation is complete, you will be prompted to proceed running setup program. It is strongly recommended to do so.



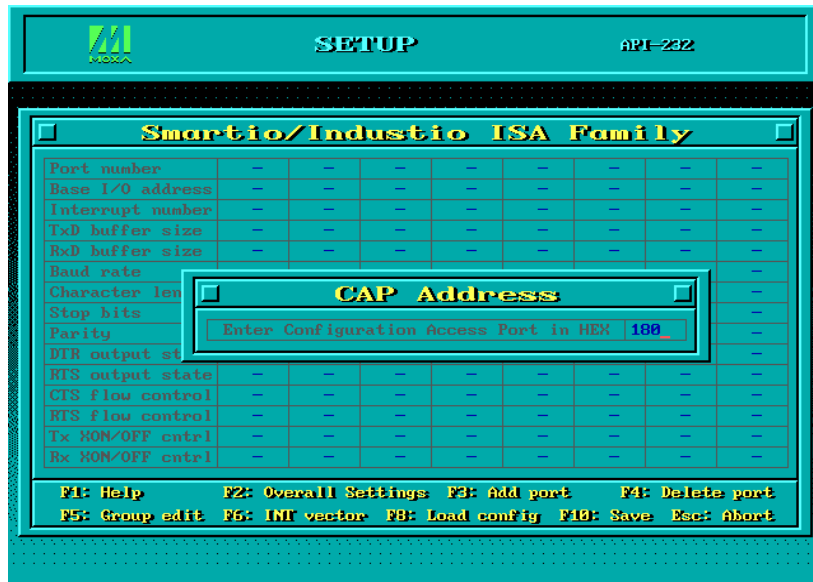
Driver Setup

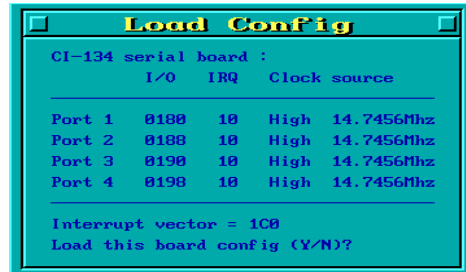
The following are steps for setting up the Industio CI-134 Series driver. Note that it is not intended to illustrate all the convenient functions of the setup programs when configuring the boards. Please refer to the F1 on-line help instructions as running setup program.

1. Run the setup program, **BIN\SETUP.EXE**, in the API-232 directory. Select **“Smartio/Industio ISA Family”** in the “Driver Selection” dialog box.



2. Press **Enter** to pop up the SETUP dialog box. In the SETUP dialog box, Press **F8** to specify the **CAP Address** and press **ENTER** and then type **Y (YES)** to load the configuration of the board to be setup.





- Now the configuration of the desired Industio CI-134 Series board will be shown along with other default settings, such as port number, buffer size, etc.

Note! Up to now you have completed the setup for Industio CI-134 Series board. You may skip this step and go directly to the next **step 5** if you need not change any setting or configure any board.



Software Installation

You may now enter/modify each port's configuration. These displayed values are the port initial values as driver is loaded.

Legend: Some noticeable fields and functions are explained below.

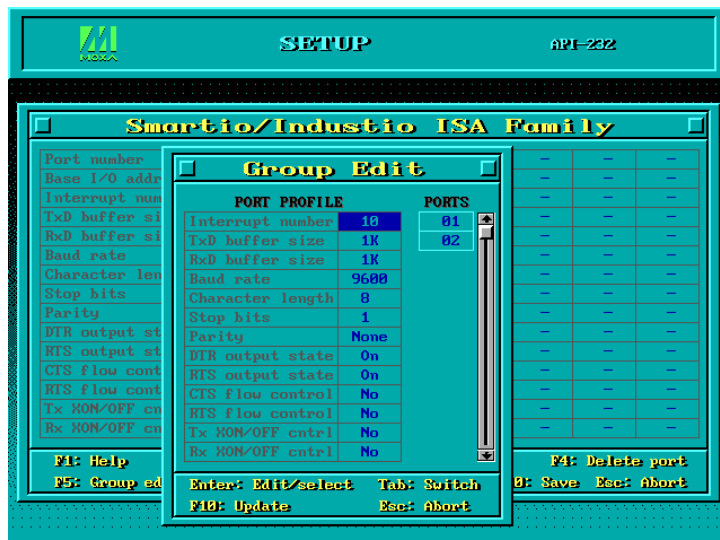
Port number: This is actually the port ID of each port. The application software will refer to the port by its port number (ID). Duplicated port number is not allowed. That is, each MOXA serial port is referred to as port number in terms of serial programming.

You may map the port number range to the one you prefer between 0 and 255 as long as no port number overlapping condition or port number undefined condition occurs. Generally, you should take the convenience of programming into consideration when specifying the port numbers for the board.

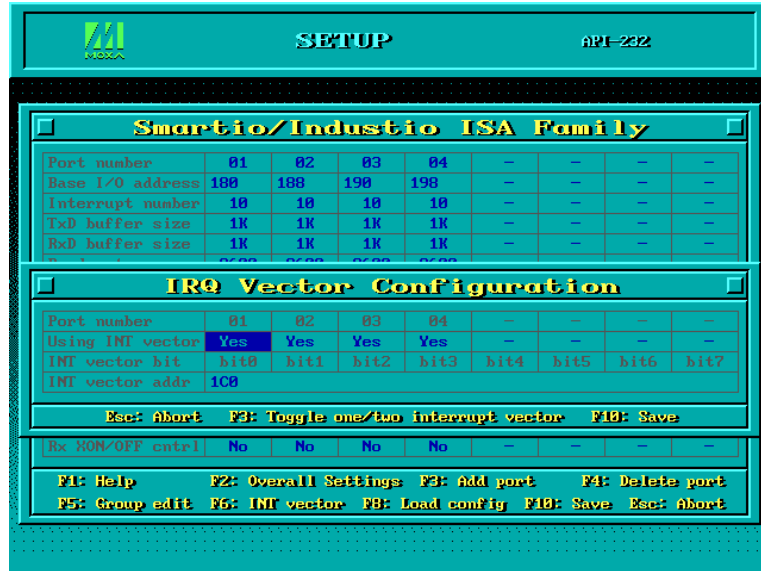
TxD buf size: The transmit (output) buffer allocated in the system for each port.

RxD buf size: The receive (input) buffer allocated in the system for each port.

F5: Group edit: This is a convenient function that helps you edit the configuration of several ports at one time as a group.



F6: INT vector: This is to set interrupt vector for each port. You can set this feature to “Yes” (default) and gain best performance for the board.



4. To setup more boards, please follow the same instructions 2 to 3 described above.
5. Press **F10** to save the latest configuration and exit the SETUP program.

Loading Driver

Having completed the setup, you can load the driver, "**BIN\SER-DRV.EXE**", at the DOS prompt. The driver will detect the Industio CI-134 Series board automatically. If the board(s) is(are) detected, a message similar to below will show:

```
API-232 Version 3.5
Universal 2/4/8 serial ports Communication Driver
Setup driver ...
Device driver setup O.K.
```

It means the Industio CI-134 Series driver is installed properly. At this point, you are ready to execute application that supports API-232 functions, or start developing applications using API-232 library.

If something went wrong, for instance, the board does not match the configuration or the board is missing, the screen will show a message like:

```
API-232 Version 3.5
Universal 2/4/8 serial ports Communication Driver
Setup driver ...
None serial port found!!
```

It means the Industio CI-134 Series driver is not installed properly. Please refer to chapter, "Troubleshooting", for possible reasons and solutions.

Unloading Driver

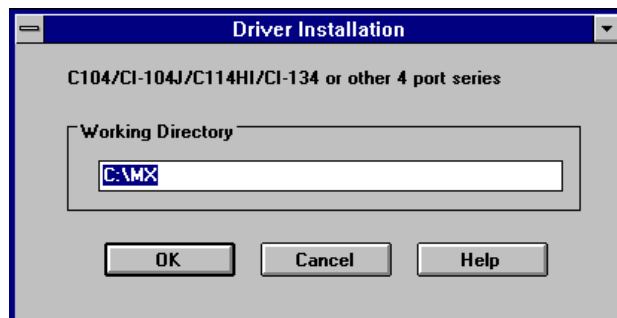
To unload (release) the Industio CI-134 Series driver from memory, type "**SER-DRV/Q**" at the DOS prompt.

Windows 3.x

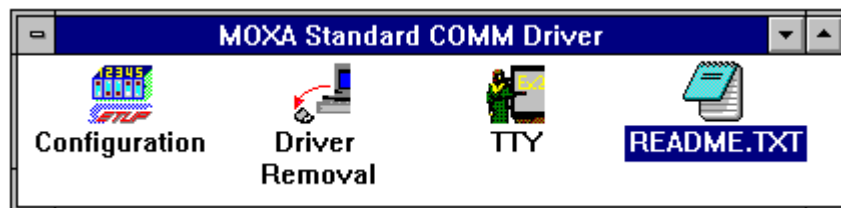
In this chapter, driver installation, configuration and removing procedure is described. Utility, **TTY**, is explained in chapter, “Serial Programming Tools”, which is good for terminal emulation. Related issues such as driver removal, baud rate settings, programming and existing applications are also stated.

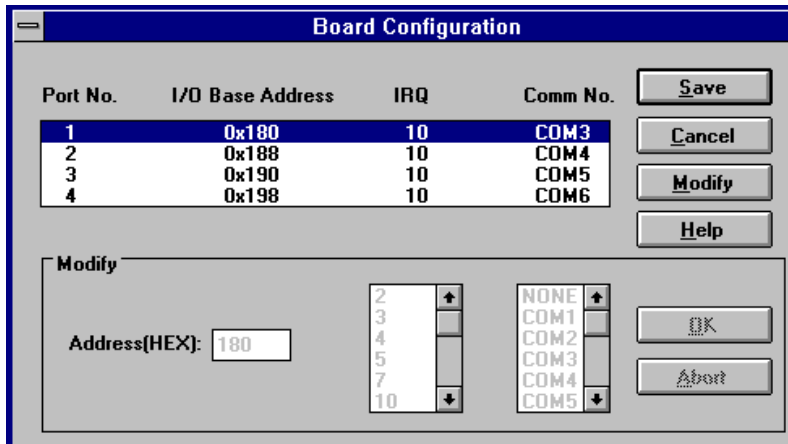
Installing Driver

1. Run **WININST.EXE** in the DOS/Windows 3.x driver diskette, click [**OK**] in the “Driver Installation” dialog box to install the driver.

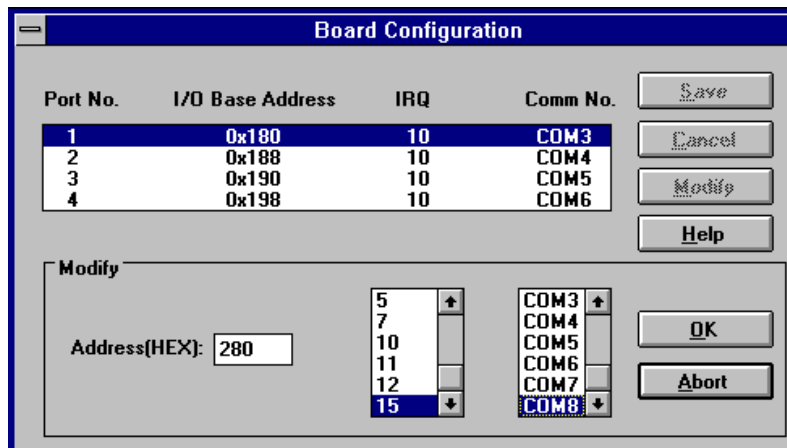


2. When installation completed the program group “MOXA Standard COMM Driver” and “Board Configuration” dialog boxes appear. If the default settings are what you desired, click [**Save**] to save the configuration and exit.





If you need to modify the settings, click [**Modify**] and type in the desired I/O address in the “Address” field, select the desired IRQ and COM number. Then click [**OK**] and [**Save**] to save the new configuration and exit.

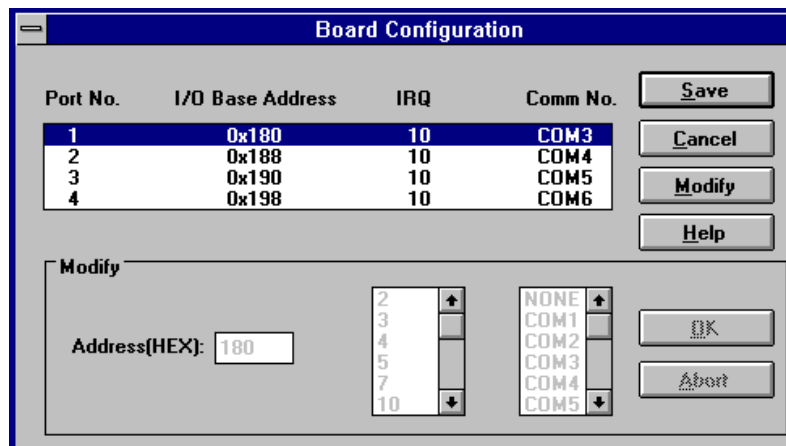


3. When configuration completed, you have to quit and restart Windows so that the changes you made will take effect.



Configuring Driver

The configuration program, **Configuration** in the "MOXA Standard COMM Driver" program group, has the easiest way to configure the 4 ports of Industio CI-134. Either from COM1 to COM4, from COM2 to COM5, from COM3 to COM6, from COM4 to COM7, from COM5 to COM8 or from COM6 to COM9, depending on user's need. Normally COM1 is used by mouse and to fully use the 4 MOXA ports, thus COM3 to COM6 is recommended. In this case, the original COM1 and COM2 on PC will be still available.



For example, if 4 ports are configured and starting from COM3, then the mapping of serial port numbers will be as depicted.

Due to the limitations of Windows 3.x operating system itself, **only up to 9 COM ports** are supported, i.e., COM1 to COM9. Hence, Industio CI-134 with 4 ports or other 4 port non-intelligent boards, maximum 6 ports is supported if the existing standard COM ports (COM1 and COM2) are included.

Removing Driver

The program, **Driver Removal**, in the “MOXA Standard COMM Driver” program group is provided to remove the installed driver from the Windows.



Baud Rate Settings

For those **Industio CI-134** boards configured as **High Speed Spectrum**, the real working speed is equal to **8 times** of the displayed speed. For example, a port, if set to Normal Speed Spectrum with 38.4 Kbps, will work at 38.4 Kbps for sure; while a port, if set to High Speed Spectrum with shown speed 38.4 Kbps, will actually work at 307.2 Kbps (38.4 Kbps × 8). This is applicable to Moxa-provided utility, such as CONFIG and TTY, existing applications and programming, which are described in later chapter.

4

Serial Programming Tools

Moxa supports easy but powerful serial programming library and communication troubleshooting utilities under Windows NT, Windows 95/98, DOS and Windows 3.x. You will save a lot of developing time with the MOXA Serial Programming Tools.

The following sections will details the installation, the library and the utilities for various platforms.

Windows NT and Windows 95/98

PComm, the professional serial comm tool for PC, is a software package under **Windows NT and Windows 95/98**, which consists of powerful serial communication library for easy programming in most popular languages, useful utilities such as diagnostic, monitor and terminal emulator, illustrative example programs and comprehensive on-line documents.

The serial communication library is useful for developing a system for data communication, remote access, data acquisition or industrial control in the Windows NT and Windows 95/98 environment, which offers an easier solution compared with the more complex Windows Win32 COMM API.

PComm Installation

To install *PComm*, run **\Setup.exe** from the diskette. Note that the *PComm* diagnostic and monitor utilities are for MOXA boards only. MOXA Windows NT or Windows 95/98 device drivers, as well as MOXA boards are required. The drivers are installed separately and detailed in the “Software Installation” chapter.

PComm Programming Library

The serial communication library helps you to develop programs for serial communications **for any COM port** complying with Microsoft Win32 API. It facilitates the implementation of multi-process and multi-thread serial communication programs and hence greatly reduces developing time.

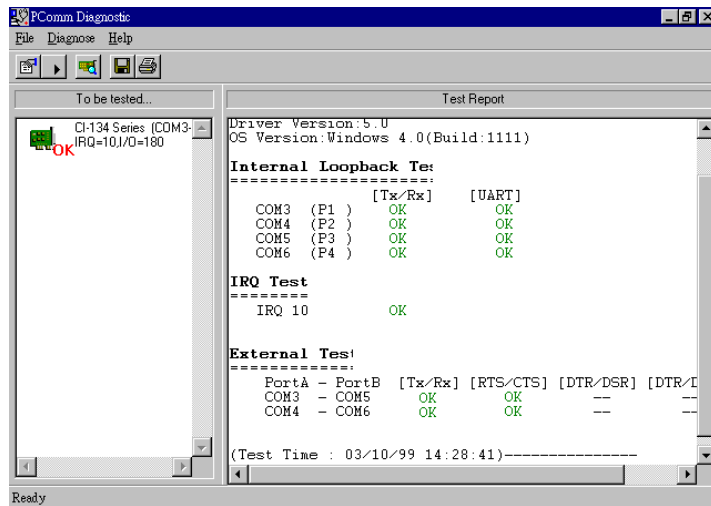
For a complete library function description and sample programs for Visual C++, Visual Basic and Delphi, please check the help file and the sample programs in the *PComm* directory.

Utilities

Following are short descriptions of each utility. For details, please see the on-line help on the diskette.

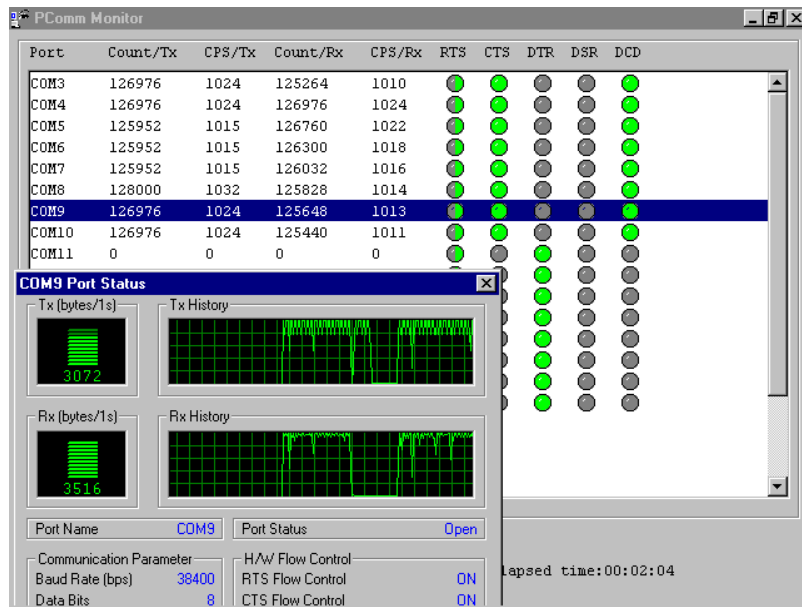
Diagnostic (for MOXA boards only)

A convenient diagnostic program that provides internal and external testing, such as IRQ, TxD/RxD, UART, CTS/RTS, DTR/DSR, DTR/DCD testing, etc., for the MOXA boards and ports to verify correct operations of both the software and hardware.



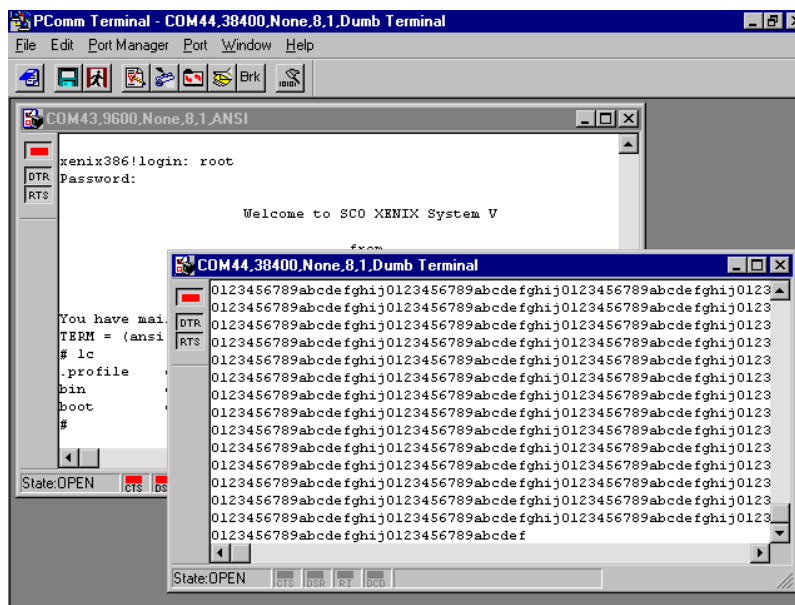
Monitor (for MOXA boards under Windows NT Only)

A useful port status monitoring program that allows you to watch the selected MOXA COM ports' data transmitting/receiving throughput and communication line status which are updated and displayed on the screen at time intervals. You can also click on one of the specific displayed port in order to visualize the current communication parameters and status of that port.



Terminal Emulator

The Terminal Emulator features multi-windows and supports terminal types of VT100 and ANSI. You can transfer data interactively, send pattern periodically or transfer file using ASCII, XMODEM, YMODEM, ZMODEM and KERMIT protocols.



DOS

Installing API-232

API-232 Library is the professional serial programming tool for DOS. It is installed automatically along with the MOXA DOS drivers. The installation is detailed in Chapter "Software Installation".

DOS API-232 Library

DOS API-232 library supports languages like Microsoft C, Turbo C, Macro Assembly, QuickBasic, Turbo Pascal, Clipper, etc. Sample programs for each supported language are included, and placed in the sub-directory, `..\EXAMPLE\language`, of the API-232 directory.

In addition, for DOS C language only, there are also Modem Control and File Transfer library available, supporting Hayes compatible modem control as well as ASCII, KERMIT, XMODEM, YMODEM and ZMODEM file transfer protocol functions.

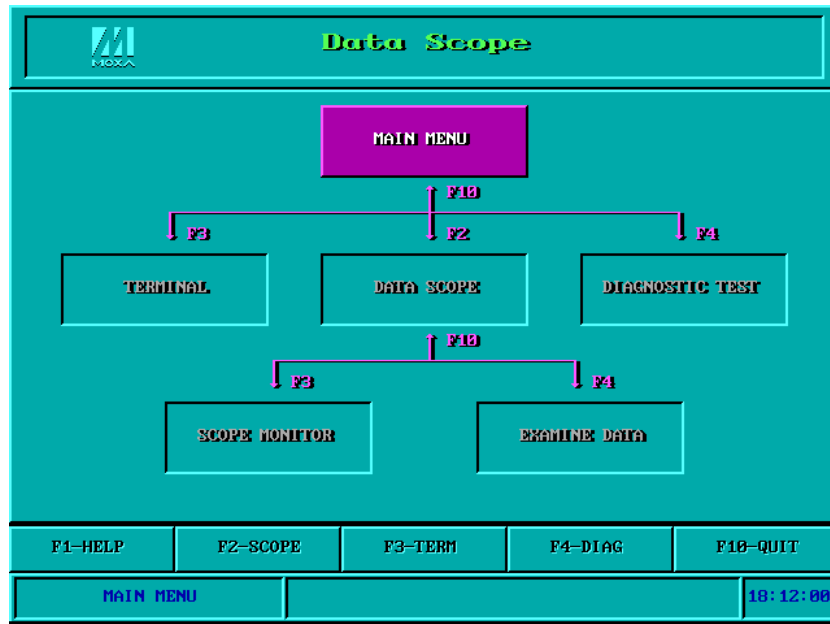
For complete API-232 function description, please see file **API-232.TXT** in the API-232 directory for more details.

Utilities

There are two utilities available for DOS: Data Scope and Diagnose, which are detailed below.

Data Scope

The Data Scope, **BIN\SCOPE.EXE**, is a suite of utility programs that can help users with system troubleshooting and serial communication debugging.



There are three major functions in Data Scope utility:

1. The **Data Scope utility** offers transparent monitoring of serial communication lines and allows data to be streamed to disk storage for later analysis.
2. The **TTY terminal emulation utility** allows user to view the signal status and transfer data interactively or files using ASCII, XMODEM, YMODEM, ZMODEM and KERMIT protocols.
3. The **Diagnostic test utility** provides port connection test with two MOXA ports connected via a properly wired cable.

Please see **on-line help** as running BIN\SCOPE.EXE for more usage and capability information.

Diagnose

The Diagnose, **BIN\DIAGNOSE.EXE**, is a utility that can help users to diagnose the hardware condition of each port of the selected board. See on-line help for more details.



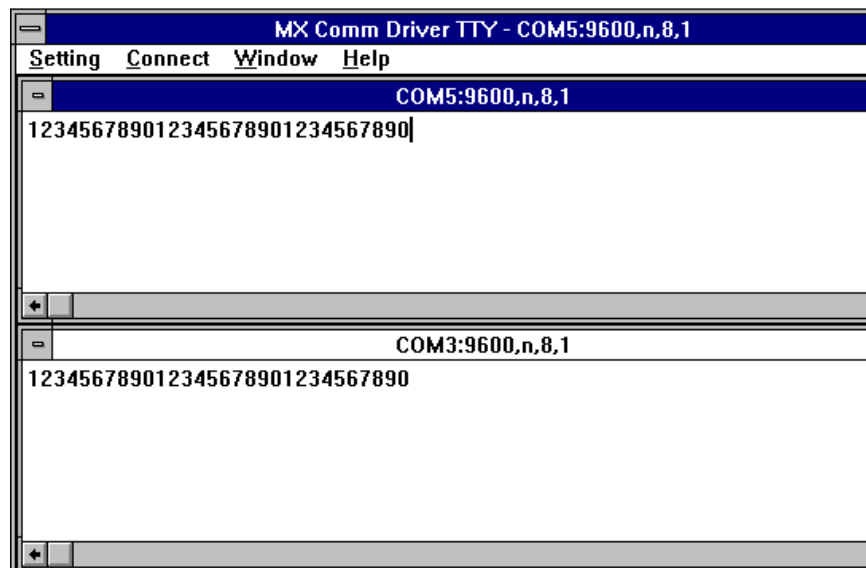
Windows 3.x

Windows COMM API Library (Win16)

MOXA Windows-compatible COMM Driver supports **Microsoft Windows COMM API** such as `OpenComm()`, `ReadComm()`, `WriteComm()`, etc. It supports any language conforming to the Windows COMM API like Microsoft C, Borland C, Visual C, Visual Basic, Delphi, etc. Sample programs for only Microsoft C, Borland C and Visual Basic are supported. For other languages' sample programs, please refer to the language-provided communication example programs.

Utility

The utility, **TTY**, in the “MOXA Standard COMM Driver” program group is intended to help users monitor and debug serial communications status under Windows 3.x, which can manipulate ports from COM1 to COM9. It is an example program that can send and receive data after each port opened with selected communication parameters. Multiple windows for ports simultaneously are available for a demonstration of multitasking feature of Windows 3.x. The Windows-provided application, **Terminal**, can only make use of COM1 to COM4 which is obviously a restriction.



Existing Applications

Many Windows software packages, such as pcANYWHERE, LabView, FIX, WinFax Pro, Fax Server, PROCOMM PLUS, LapLink, etc. can access Industio CI-134 COM ports directly since these applications follow the Microsoft Windows COMM API.

RS-485 Programming

If you intend to do RS-485 communication with Industio CI-134 Series, please follow the RS-485 programming guide below and also refer to the chapter, “**Connection Cable and Cable Wiring**”, for more RS-485 operation details.

The Industio CI-134 Series supports **only 2-wire half-duplex RS-485 communication**. **Data+/-** pins are served for both data transmitting and receiving, depending on the mode selected: either Automatic Data Direction Control or By RTS mode.

Automatic Data Direction Control Mode (Recommended)

Automatic Data Direction Control scheme is the best solutions for RS-485 applications. The mode switch for the port should be set to **ON** position, to be able to use Automatic Data Direction Control Mode.

Under this mode, no extra code is required to control the data transferring (data transmitting and receiving), which is automatically managed with the intelligent hardware mechanism. That is, **RS-485 programming in this mode is just as simple as RS-232/RS-422 programming**.

By RTS Mode (For back-compatibility)

If the mode switch for the port is set to **OFF** position, By RTS Mode is used. The port is ready for transmitting data if **RTS signal is asserted** and ready for receiving data if **RTS signal is not asserted**.

RTS scheme is a traditional way and suitable for most system, including Windows NT, Windows 95/98 and DOS, or even UNIX, that permits RTS control from application programs. This mode should be compatible with most of the already-made RS-485 applications.

How to transmit and receive data for Windows NT, 95/98 & DOS

We recommend you to configure Industio CI-134 Series ports as follows in order to acquire precise timing control in RS-485 2-wire transmission.

There are 2 solutions to control RS-485 2-wire transmission.

Solution 1

The following model is common in RS-485 2-wire transmission.

```
sio_SetWriteTimeouts(port, 0); /* Set sio_write() into block mode if for
Windows NT and Windows 95/98 */
sio_RTS(port, 1); /* Turn on RTS signal. The RS-485
port is ready for transmitting data. */
sio_write(port, buff, 10); /* Write 10 byte characters in "buff".
The function blocks until last
character transmitted */
sio_RTS(port, 0); /* Turn off RTS signal. The RS-485
port is ready for receiving data. */
sio_read(port, buff, 10); /* Read 10 bytes */
```

Solution 2

There is a dedicated RS-485 function in *PComm* or API-232 library. It integrates the above functions of solution 1 regarding sending data as one.

```
sio_putb_x(port, buff, tick ); /*
```

1. Turn on RTS and ready for transmitting data.
2. Send data.
3. Wait for tick time.
4. Turn off RTS and ready for receiving data. */

For more information on these functions, please refer to *PComm* library on-line Help file for Windows NT and Windows 95/98 or API-232.txt file for DOS, respectively.



Connection Cable and Cable Wiring

In serial data communications, the term **DTE** is for Data Terminal Equipment, like PC COM1/2, serial printers and terminals. The term **DCE** is for Data Communication Equipment, like modems.

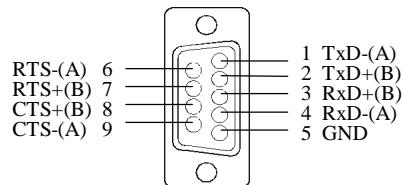
RS-422 Cable Wiring

The RS-422 standard uses a balanced voltage digital interface to allow communications of 10M bps on cable length of 4000 feet. Ten receivers can be connected to any one driver for broadcasting systems.

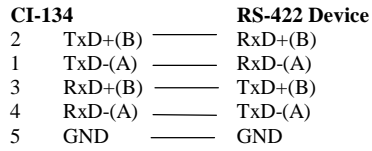
RS-422 pin outs for Industio CI-134 Series:

CI-134

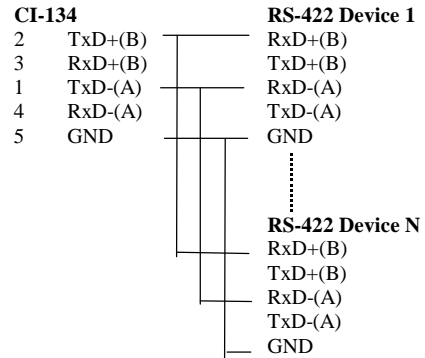
1	TxD-(A)
2	TxD+(B)
3	RxD+(B)
4	RxD-(A)
5	GND
6	RTS-(A)
7	RTS+(B)
8	CTS+(B)
9	CTS-(A)



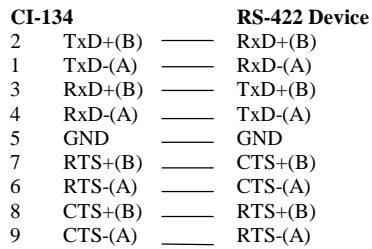
RS-422 Point-to-point



RS-422 Broadcasting



RS-422 with Handshaking



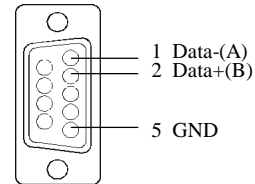
RS-485 Cable Wiring

The RS-485 standard is an enhanced version of the RS-422 balanced line standard. It allows multiple drivers and receivers in a multidrop systems. As many as 32 drivers and 32 receivers can be put on any multidrop system.

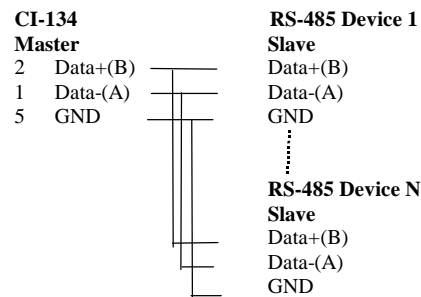
The CI-134 Series supports **only 2-wire half-duplex RS-485 communication**. **Data+/-** pins are served for both data transmitting and receiving, depending on the RTS signal.

RS-485 pin outs for CI-134:

CI-134	
1	Data-(A)
2	Data+(B)
5	GND



Multidrop RS-485 Half-duplex

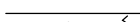









See the section “**RS-485 Programming**” of the chapter “**Serial Programming Tools**” for more RS-485 programming details.

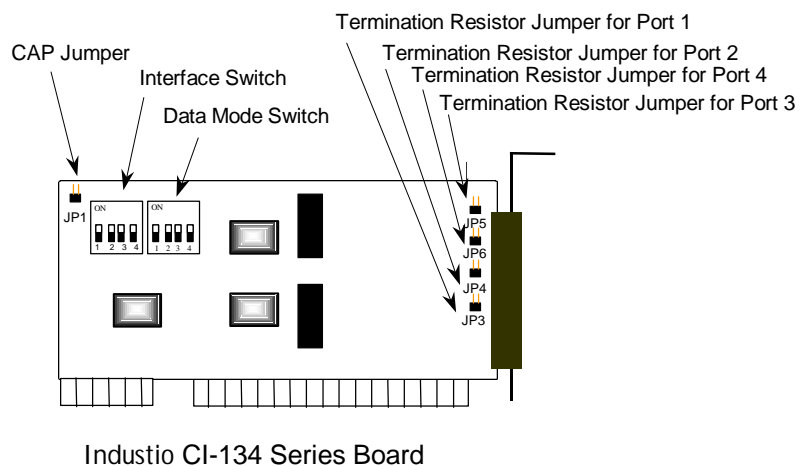
Impedance Matching and Termination Resistors

For RS-422/485 serial communications, when an electrical signal travels through two different resistance junctions in a transmission line, the impedance mismatch will sometimes cause signal reflection. Signal reflection causes signal distortion, which in turn will contribute communication errors. The solution to this problem is to establish the same impedance at the line ends as in the line itself by terminating them with resistors.

Industio CI-134 already installs the resistors on board for your convenience, indicated as follows. The value of the termination resistor should equal the characteristic impedance of the transmission line. Resistors should be added near the receiving side.

CI-134			RS-422/485 Device
2	TxD+(B)		RxD+(B)
1	TxD-(A)		RxD-(A)
3	RxD+(B)		TxD+(B)
4	RxD-(A)		TxD-(A)
7	RTS+(B)		CTS+(B)
6	RTS-(A)		CTS-(A)
8	CTS+(B)		RTS+(B)
9	CTS-(A)		RTS-(A)

Note: ⚡ Stands for termination resistor near the receiving side



DB-37 Connector Pin Outs

The following lists pin assignment of the Industio CI-134 Series **DB37** connector on the bracket.

For RS-422 Mode

Pin no.	Signal	Pin no.	Signal
1		20	CTS2-(A)
2	TxD2-(A)	21	RxD2-(A)
3	GND/VEE2	22	RTS2-(A)
4	CTS2+(B)	23	RTS2+(B)
5	TxD2+(B)	24	RxD2+(B)
6	CTS3-(A)	25	TxD3-(A)
7	RxD3-(A)	26	GND/VEE3
8	RTS3-(A)	27	CTS3+(B)
9	RTS3+(B)	28	TxD3+(B)
10	RxD3+(B)	29	CTS1-(A)
11	TxD1-(A)	30	RxD1-(A)
12	GND/VEE1	31	RTS1-(A)
13	CTS1+(B)	32	RTS1+(B)
14	TxD1+(B)	33	RxD1+(B)
15	CTS0-(A)	34	TxD0-(A)
16	RxD0-(A)	35	GND/VEE0
17	RTS0-(A)	36	CTS0+(B)
18	RTS0+(B)	37	TxD0+(B)
19	RxD0+(B)		

Note: Make shield grounded to connector.

For RS-485 Mode

Pin no.	Signal	Pin no.	Signal
2	Data2-(A)	25	Data3-(A)
3	GND/VEE2	26	GND/VEE3
5	Data2+(B)	28	Data3+(B)
11	Data1-(A)	34	Data0-(A)
12	GND/VEE1	35	GND/VEE0
14	Data1+(B)	37	Data0+(B)

Note: Make shield grounded to connector.

6

Troubleshooting

Common Industio CI-134 Series problems and possible solutions are listed below. If you still have problems, contact your dealer or Moxa for help. Or use the “**Problem Report Form**” at the end of this manual to report problems to your dealer at once for faster technical support.

General Troubleshooting

1. **The MOXA driver, while installing the driver, cannot detect the MOXA board.**

Hardware causes and solutions:

- a. The board is not installed or missing (absent). Please install it.
- b. The board is not properly plugged in the system. If that is the case, re-install the board and make sure that it fits well in a 32-bit slot this time. Sometimes the slot for plugging the board is bad. In this case, try other slots until you find a good one.

2. **The MOXA board and driver are activated but cannot transfer (transmit/receive) data.**

Hardware Causes and Solutions:

- a. Check for wrong cable wiring. Refer to the “Connection Cable and Cable Wiring” chapter for precise pin outs of the connector type you are using.
- b. The cable or the board is defective. You may use other ports, cables or boards to verify. In addition, the *PComm* “Diagnostic” utility for Windows NT and Windows 95/98 is good for testing MOXA boards and port conditions. If Diagnostic reports error, replace the faulty components.

Software Causes and Solutions:

- a. For RS-422 mode, Industio CI-134 Series checks the line status (CTS) before it sends data out if the RTS/CTS flow control feature is set to "Enable" in the configuration or application program. Please refer to the "Connection Cable and Cable Wiring" chapter for proper wiring.
- b. Perhaps the application controlling the board is not correctly written according to the corresponding API of the operating system. To verify, please run an existing and known good application or the provided utilities by Moxa. For example, under Windows NT and Windows 95/98, *Pcomm* "Terminal emulator" or "HyperTerminal" utilities are good for testing the COM ports.

3. Why the DOS utility IQ-IRQ can not access Industio CI-134 to configure?

There are several reasons that may lead to this trouble:

- a. The user forgets or does not know the Configuration Access Port (CAP) of the board. See next problem 4 for how to solve this problem.
- b. The CAP of the board conflicts with other add-on boards' I/O address. Please change other add-on boards' I/O address to avoid the conflict.
- c. The Industio CI-134 board is not plugged in a right or good slot. Please plug the board in a good 16-bit ISA slot.
- d. The Industio CI-134 board may malfunction. Please return for repair.

If any existing board has the same I/O address as 0x180, the **default** CAP address, or the 1st port's I/O address, you must try to avoid the conflict by doing either one the following.

- a. Install a jumper (short) at position JP1 on the upper-left corner of the board. This will force the CAP address to 0xA700.
- b. Change or disable the existing board's I/O address.

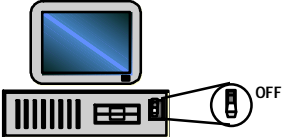
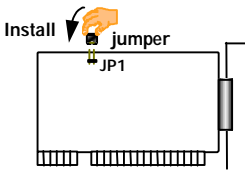
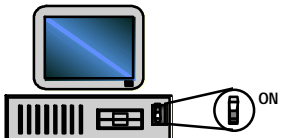
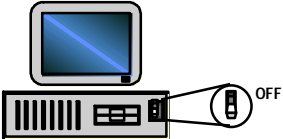
4. What to do if user forgets or does not know the Configuration Access Port (CAP) address of Industio CI-134?

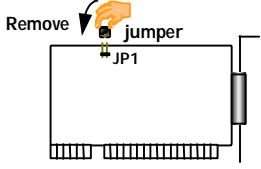
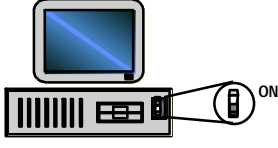
The Industio CI-134 multiport boards are designed without jumper or switch, so the configuration is completed only by DOS utility *Io-irq.exe*.

To configure the board, you need to know the board's Configuration Access Port (CAP) address. Because the CAP address is the only channel, via which the *Io-irq.exe* can access to the board.

Troubleshooting

The following procedure instructs user to recover once the CAP is unknown.

Step 1.	Power off the PC.	
Step 2.	Install jumper onto the JP1 of the board.	
Step 3.	Power on the PC. Now the CAP address of the board will be 0xA700.	
Step 4.	Execute Io-irq under DOS environment. A:> Io-irq	
Step 5.	Enter CAP address 0xA700 to access the board. <i>Enter the "Configuration Access Port" in HEX: A700</i>	
Step 6.	The previous hardware configuration will be shown. <i>Modify them if necessary. Remember the CAP address this time.</i>	
Step 7.	Exit the IO-IRQ.	
Step 8.	Power off the PC.	

Step 9.	Remove the jumper on position JP1.	
Step 10.	Power on the PC.	

Windows NT

This section is specific for troubleshooting under Windows NT. For general problems and solutions, please see the previous section, “General Troubleshooting”.

1. **After the system reboots, the error message “Another driver in the system, which did not report its resources, has already claimed the interrupt used by xxx.” appears in the Event Log.**

This indicates that the MOXA board is found, but the IRQ is conflicting with another adapter. Please make sure there is no conflict with other adapter’s IRQ. Check the BIOS IRQ settings first. Make sure that an IRQ is available.

2. **After the system reboots, the error message “Cannot find any configured MOXA Smartio/Industio Series board!” appears in the Event Log.**
 - a. Some partial decoded network board may interfere with our board. Please avoid from using 0x300 as I/O address for those network boards.
 - b. Check hardware configuration of Industio CI-134 Series board by IO-IRQ.EXE. Then make sure the hardware configuration, including I/O addresses for each port, Interrupt Vector, IRQ, is identical to that of the driver.
 - c. The I/O addresses may conflict with other devices, please change another set of I/O address such as I/O:0x280, Interrupt Vector:0x2C0.

- d. The board(s) is not plugged properly. Please make sure the board is seated firmly in the expansion slot.
- e. The slot for plugging the board is defective.
In this case, please try other slots until you find a good one.
- f. The board might be defective.

3. The COM number of the Industio CI-134 Series conflicts with others.

The COM numbers of different boards happen to be the same. Try to change the COM number mappings.

4. Windows NT system panic (blue screen).

The possible reason is an IRQ or memory conflict with other ISA Bus adapters, like LAN and SCSI boards, or the system BIOS. Please refer to the corresponding problem in the previous section, "General Troubleshooting", for solutions.

Windows 95/98

This section is specific for troubleshooting under Windows 95/98. For general problems and solutions, please see the previous section, "General Troubleshooting".

1. The system fails to find the Industio CI-134 Series board! After system reboot, error message "CI-134 Series (CAP=0x0180, port 1=COM3): Board is not found" appears.

- a. Some partial decoded network board may interfere with our board. Please avoid from using 0x300 as I/O address for those network boards.
- b. Check hardware configuration of CI-134 Series board by IO-IRQ.EXE. Then make sure the hardware configuration, including I/O addresses for each port, Interrupt Vector, IRQ, is identical to that of the driver.
- c. The I/O addresses may conflict with other devices, please change another set of I/O address such as I/O:0x280, Interrupt Vector:0x2C0.
- d. The board(s) is not plugged properly. Please make sure the board is seated firmly in the expansion slot.
- e. The slot for plugging the board is defective.
In this case, please try other slots until you find a good one.
- f. The board might be defective.

DOS

This section is specific for troubleshooting under DOS. For general problems and solutions, please see previous Section "General Troubleshooting".

1. After executing SER-DRV.EXE, error message "None serial port found!" appears.

- a. Make sure you're using the right driver.
- b. Check if the board is properly plugged into ISA/EISA bus slot.
- c. Check if the I/O address and IRQ settings in SETUP program are same as the settings on board.

Appendix

Technical Reference

Specifications

% Bus interface:	16-bit ISA (EISA compatible)
% Number of ports:	4
% Max. boards:	4
% I/O addr.:	0x0000 ~ 0xFFFF
% IRQ:	2, 3, 4, 5, 7, 10, 11, 12, 15
% Comm. controller:	TI550C
% Speed (bps):	50 ~ 921.6K
% Data bits:	5, 6, 7, 8
% Stop bits:	1, 1.5, 2
% Parity:	none, even, odd, space, mark
% Data signals:	RS-422» T xD+/-, RxD+/-, RTS+/-, CTS+/-, GND RS-485» D ata+/-, GND
% Connectors:	DB9 (male)» E
% Surge protection:	max. 2000V (CI-134IS)
% Opto-isolation:	max. 2000V (CI-134I and CI-134IS)
% Termination resistor:	120 Ω
% Operating temp.:	0 ~ 55 $\frac{1}{4}$ [
% Power requirement:	CI-134» 5 0mA max. (+5V) CI-134I» 1 0mA max. (+5V) CI-134IS» 2 3mA max. (+5V)
% Dimensions:	CI-134» 6 0mm» 5 mm CI-134I» 8 0mm» 1 0mm CI-134IS» 8 0mm» 1 0mm
% Operating Systems:	See the driver support list below.

CI-134 Series

Windows NT	D
Windows 95/98	D
DOS	D
Windows 3.x	D
Linux	R
SCO UNIX/OpenServer	C
SCO XENIX	C
QNX	C
FreeBSD	C
OS/2	C

D: Driver supported by Moxa and shipped with product

R: Driver shipped by request

C: Driver supported by OS

UART TI550C

The UART chip, **TI550C**, is an intelligent asynchronous controller capable of supporting one full duplex channel that simultaneously transfers data at **921.6 Kbps**. To increase the overall data throughput, special features such as on-chip FIFO and on-chip hardware flow control are used to reduce the number of interrupts to the host CPU and to prevent any loss of valuable data.

PC I/O Port Address Map

The following is the list of the I/O port addresses commonly used, which is good for preventing I/O address conflict when configuring Industio CI-134 Series.

IO/ Address	Device
000-01F	DMA controller 1
020-03F	interrupt controller
040-05F	Timer
060-06F	Keyboard
070-07F	Real-time clock
080-09F	DMA page register
0A0-0BF	Interrupt controller 2
0C0-0DF	DMA controller
0F0-0FF	Math coprocessor
100-1EF	not usable
1F0-1F8	Fixed disk
200-207	Game I/O
278-27F	Parallel printer port 2 (LP2:)
2F8-2FF	Serial Port 2 (COM2:)
300-31F	Prototype card
360-36F	Reserved
378-37F	Parallel printer port 1 (LP1:)
3B0-3BF	Monochrome display
3C0-3CF	Reserved
3D0-3DF	Color graphics display
3F0-3F7	Diskette controller
3F8-3FF	Serial port 1 (COM 1:)

Problem Report Form

Industio CI-134 Series

Customer name: _____	
Company: _____	
Tel: _____	Fax: _____
Email: _____	Date: _____

1. **Moxa Product:** CI-134 Series **Model :** , CI-134 , CI-134I , CI-134IS **Serial Number:** _____
2. **Moxa Driver Version:** _____
3. **Moxa hardware settings:**

3.1 Please check the hardware configuration for I/O, IRQ, and speed, via running IO-IRQ.EXE from DOS or Windows 95/98 DOS Prompt. And also check the switch settings for interface and data mode for each port.

PORT	1	2	3	4	5	6	7	8
I/O								
IRQ								
Speed (High/Normal)								
Interface (RS-422/RS-485)								
RS-485 Data Mode (AUTO/RTS)								

Interrupt Vector: _____

3.2 CAP Jumper JP1 on the board: , open , short

4. **Operating System:** , Windows 95 , Windows 98
, Windows NT 3.51 , Windows NT 4.0
, DOS , Windows 3.x , Others

5. **PC Host:** Make _____ Model _____

6. **CPU:** Speed _____MHz Make _____ Model _____

7. **BIOS:** Make _____ Version _____

8. **Problem Description:** Please describes the problem as clearly as possible, including the error message you see.
We may have to follow your description to reproduce the problem.

- , Board not found. , Board found, but can't transfer data.
- , Can transfer data, but lose data. , Can transfer data, but with garbled data.
- , Others. Detailed error message description is recommended:

Return Procedure

For product repair, exchange or refund, you must:

- % Provide evidence of original purchase.
- % Fill out the Problem Report Form (PRF) as detailed as possible for shorter product repair time.
- % Obtain a Return Merchandise Authorization (RMA) number from the sales representative or dealer.
- % Carefully pack the product in an anti-static package, and send it, pre-paid, to the dealer. The RMA number should be visible on the outside of the package, and include a description of the problem along with the return address and telephone number of a technical contact.