

7664-1179--11



# PageScope Light

## Fiery Z4/X3e for CF9001

# Operator's Manual

## **Welcome**

PageScope Light Fiery Z4/X3e for CF9001 is a device control utility program provided by the HTTP server built into the Fiery Z4/X3e (printer controller for CF9001). With a standard Web browser, this utility can be used as an interface for remote control of the CF9001.

## **Trademark Acknowledgements**

Minolta is a registered trademark of MINOLTA CO., LTD.

Apple and Macintosh are registered trademarks of Apple Computer, Inc.

Ethernet is a registered trademark of Xerox Corporation.

Fiery and the Fiery logo are registered trademarks of Electronics for Imaging, Inc. Fiery WebTools is a trademark of Electronics for Imaging, Inc.

Linux is a registered trademark of Linus Torvalds.

Microsoft, Windows, and Windows NT are registered trademarks of Microsoft Corporation.

Netscape Communications, the Netscape Communications logo, Netscape Navigator, Netscape Communicator, and Netscape are trademarks of Netscape Communications Corporation.

PostScript is a registered trademark of Adobe Systems, Inc.

Solaris is a trademark of Sun Microsystems, Inc.

All other product names are trademarks or registered trademarks of their respective holders.

Copyright 2000 MINOLTA CO., LTD.

**The information contained in this manual is subject to change without notice to incorporate improvements made on the product or products the manual covers.**

## CONTENTS

<b>1</b>	<b><i>System Requirements</i></b> .....	<b>1</b>
<b>2</b>	<b><i>Access</i></b> .....	<b>2</b>
	<b>2.1</b> <b><i>Operation</i></b> .....	<b>2</b>
<b>3</b>	<b><i>Screen Configuration</i></b> .....	<b>3</b>
<b>4</b>	<b><i>System Tab</i></b> .....	<b>5</b>
	<b>4.1</b> <b><i>Summary</i></b> .....	<b>5</b>
	<b>4.2</b> <b><i>Details</i></b> .....	<b>6</b>
	<b>4.2.1</b> <b><i>Input Tray</i></b> .....	<b>6</b>
	<b>4.2.2</b> <b><i>Output Tray</i></b> .....	<b>7</b>
	<b>4.2.3</b> <b><i>Hard Disk Status</i></b> .....	<b>8</b>
	<b>4.2.4</b> <b><i>ROM Version</i></b> .....	<b>9</b>
	<b>4.2.5</b> <b><i>Interface Information</i></b> .....	<b>10</b>
	<b>4.2.6</b> <b><i>Consumable Status</i></b> .....	<b>11</b>
	<b>4.3</b> <b><i>Preference</i></b> .....	<b>12</b>
	<b>4.4</b> <b><i>Online Assistance</i></b> .....	<b>13</b>

<b>5 Printer Tab .....</b>	<b>15</b>
<b>5.1 Printer Front Panel .....</b>	<b>15</b>
<b>5.2 Test Print .....</b>	<b>16</b>
<b>5.3 PostScript Font .....</b>	<b>17</b>
<b>Appendix Status List .....</b>	<b>18</b>

---

---

# 1 System Requirements

The following items are required to use this utility.

## **Computer**

- Software

<b>Operating System</b>	<b>Web Browser</b>
Windows 95/98/NT 4.0/2000	Internet Explorer 3.02 or higher Netscape Navigator 3 or higher
Macintosh System 7 or higher	Internet Explorer 4.5 or higher Netscape Navigator 4 or higher
Solaris 2.5.1/2.6/7 (2.7)	Netscape Navigator 4 or higher
Linux	Netscape Navigator 4 or higher

- NIC (Network Interface Card)
- Ethernet or Token Ring
- TCP/IP Protocol

## **CF9001**

### **Printer Controller**

- Fiery Z4 for CF9001 (external) or Fiery X3e for CF9001 (built-in)

## 2 Access

PageScope Light Fiery Z4/X3e for CF9001 can be accessed directly from a Web browser.

1. Start the Web browser.
2. In the URL field, enter the IP address of the printer controller as shown below.

`http://<IP address of printer controller>/`

(Example) When the IP address of the printer controller is 192.9.200.200:

`http://192.9.200.200/`

3. This causes the PageScope Light Fiery Z4/X3e for CF9001 screen to appear.

### 2.1 Operation

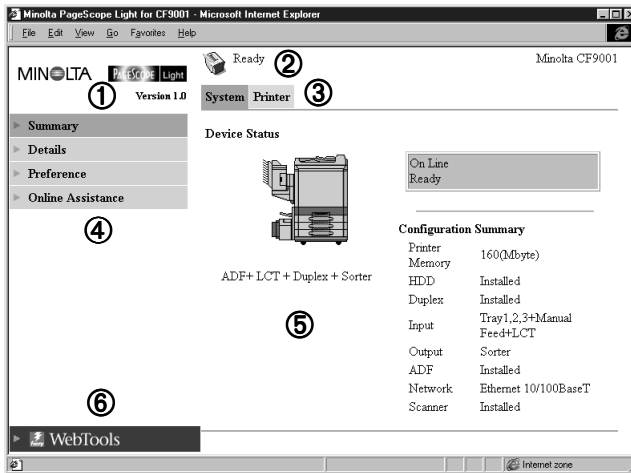
PageScope Light Fiery Z4/X3e for CF9001 operation is identical to that for Internet Web pages. Clicking a hot link jumps to the link destination, and the **Back** and **Forward** buttons scroll through pages backwards and forward.

# 3 Screen Configuration

The configuration of the PageScope Light Fiery Z4/X3e for CF9001 screen is shown below.

### Note

- Screen images shown in this manual may differ slightly from actual ones. In addition, specifications are subject to change without prior notice.



#### ① Minolta PageScope Light Logo

Clicking the logo jumps to the Website shown below.

[www.minolta.com](http://www.minolta.com)

#### ② Status Display

The current status of the CF9001 is indicated by both icons and text. The message **Ready** appears in the top line of text when the CF9001 is operating normally. For full details about screen contents, see *Appendix – Status List*.



### 3 Screen Configuration

---

③ **Tabs**

Use the tabs to select the category of items you want to display. For full details about tab contents, see *4 – System Tab* and *5 – Printer Tab*.

④ **Menus**

Use the menus to select information or setting items. The menus that appear depend on the currently selected tab. For full details about menu contents, see *4 – System Tab* and *5 – Printer Tab*.

⑤ **Information and Settings Display**

This display shows information or settings in accordance with the selected menu item.

⑥ **Fiery WebTools Logo**

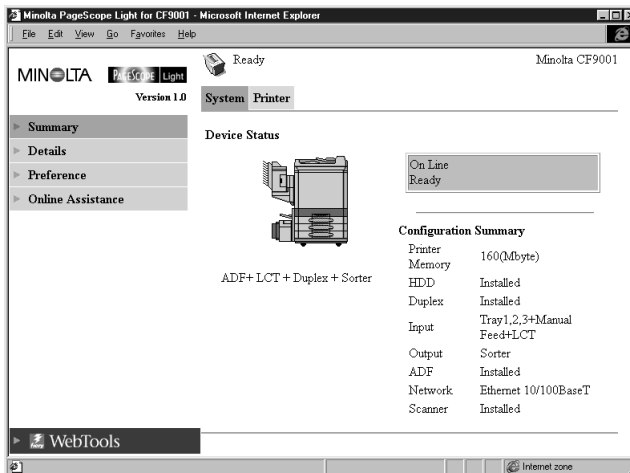
Clicking this logo displays the settings page for Fiery WebTools, which is built in to the printer controller. For details about Fiery WebTools, see the *Fiery Z4/X3e Operator's Guide*.

## 4 System Tab

The **System** tab shows information about and settings for the CF9001 system configuration.

### 4.1 Summary

This screen is the initial screen when you access `http://<IP address of printer controller>` with your Web browser. You can also display the Summary screen by clicking the **Summary** menu on the **System** tab. The Summary screen shows the current CF9001 system configuration.



**Device Status** This area uses graphics and text to show the configuration of options installed on the CF9001.

#### Operational Panel Display

This area shows the printer controller message display. Messages are the same as the Status Display messages that appear in the upper part of the window.

## 4 System Tab

### Configuration Summary

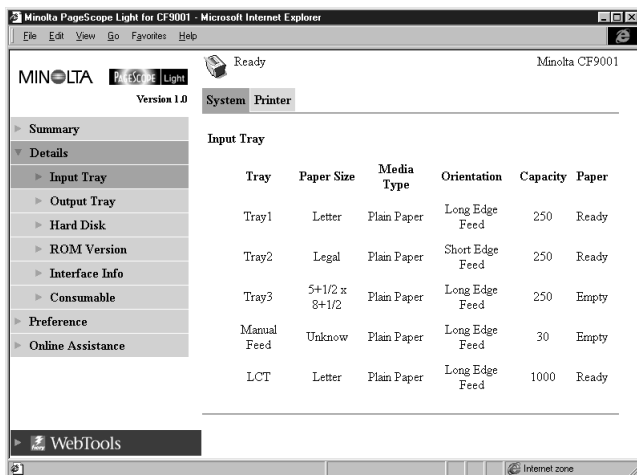
This area shows an overview of the current CF9001 system configuration.

## 4.2 Details

This screen appears when you click the **Details** menu on the **System** tab. It shows details about each of the CF9001's units. Clicking a sub-menu under the **Details** menu displays information about the applicable unit.

### 4.2.1 Input Tray

This screen appears when you click the **Input Tray** sub-menu under the **Details** menu. It shows the configuration of all the Input Trays installed on the CF9001.



The screenshot shows a web browser window titled "Minitool Pagescope Light for CF9001 - Microsoft Internet Explorer". The page displays the "Input Tray" configuration for the Minitool CF9001. The interface includes a navigation menu on the left with options like Summary, Details, Input Tray, Output Tray, Hard Disk, ROM Version, Interface Info, Consumable, Preference, and Online Assistance. The main content area shows a table of input trays with columns for Tray, Paper Size, Media Type, Orientation, Capacity, and Paper.

Tray	Paper Size	Media Type	Orientation	Capacity	Paper
Tray1	Letter	Plain Paper	Long Edge Feed	250	Ready
Tray2	Legal	Plain Paper	Short Edge Feed	250	Ready
Tray3	5+1/2 x 8+1/2	Plain Paper	Long Edge Feed	250	Empty
Manual Feed	Unknow	Plain Paper	Long Edge Feed	30	Empty
LCT	Letter	Plain Paper	Long Edge Feed	1000	Ready

**Tray** Tray name

**Paper Size** Size of paper loaded in the tray

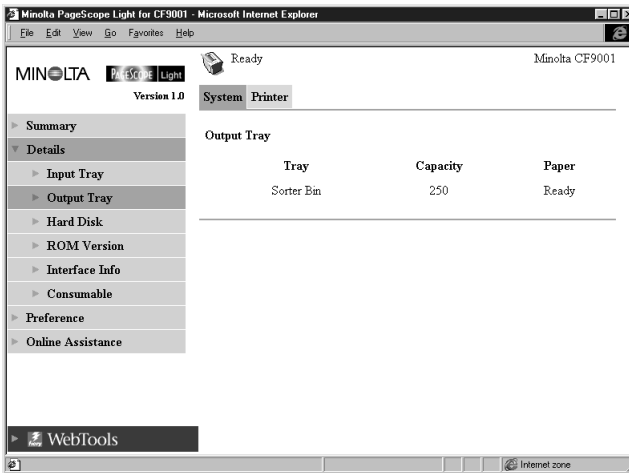
**Media Type** Type of media loaded in the tray

**Orientation** Orientation of paper loaded in the tray

- Capacity**      Maximum number of sheets that can be loaded in the tray
- Paper**        Remaining paper status (Shows **Ready** when paper is present, and **Empty** when there is no paper left.)

### 4.2.2 Output Tray

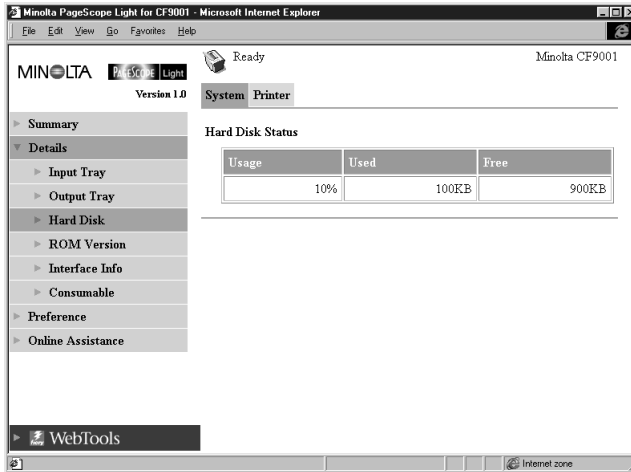
This screen appears when you click the **Output Tray** sub-menu under the **Details** menu. It shows the configuration of all the Output Trays installed on the CF9001.



- Tray**            Tray name
- Capacity**      Maximum number of sheets the tray can hold
- Paper**        Tray status (Shows **Full** when the tray is unable to receive any more paper, and **Ready** when it is.)

### 4.2.3 Hard Disk Status

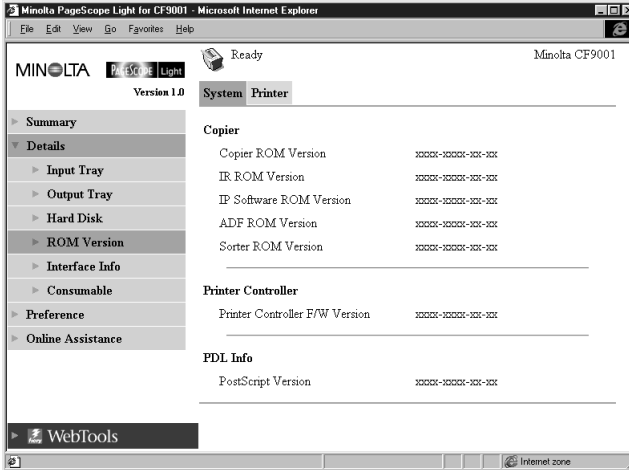
This screen appears when you click the **Hard Disk** sub-menu under the **Details** menu. It shows the status of the hard disk installed on the printer controller.



<b>Usage</b>	Percent of hard disk space used (%)
<b>Used</b>	Amount of hard disk space used (KB)
<b>Free</b>	Amount of hard disk space free (KB)

## 4.2.4 ROM Version

This screen appears when you click the **ROM Version** sub-menu under the **Details** menu. It shows information about the on-board memory of the CF9001 and the printer controller.



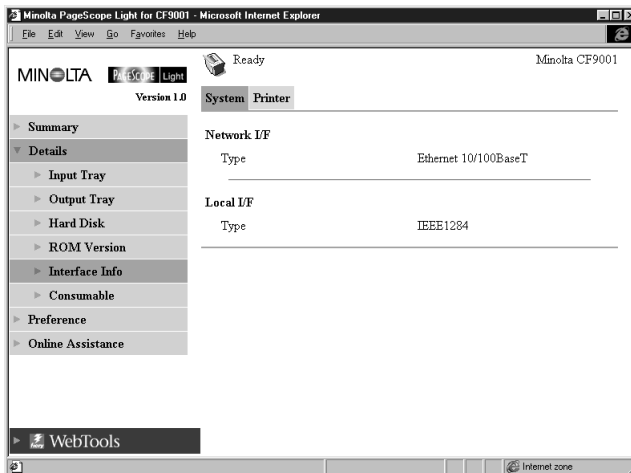
**Copier** Version of ROM installed on the CF9001

**Printer Controller** Version of firmware installed on the printer controller

**PDL Info** Version of printer control codes (PostScript) used by the printer controller

### 4.2.5 Interface Information

This screen appears when you click the **Interface Info** sub-menu under the **Details** menu. It shows information about the printer controller interface.



**Network I/F** Network interface type (Ethernet 10/100BaseT or Token Ring)

**Local I/F** Local port type

## 4.2.6 Consumable Status

This screen appears when you click the **Consumable** sub-menu under the **Details** menu. It shows the current status of CF9001 consumables. For information about consumables, see the *CF9001 Operator's Manual*.

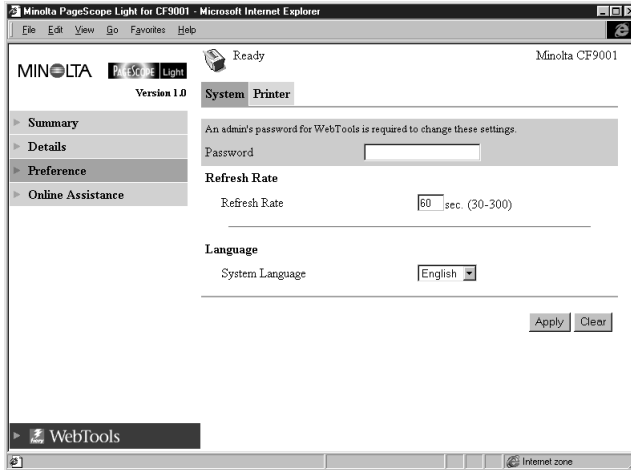


<b>Black Toner</b>	Remaining black toner
<b>Yellow Toner</b>	Remaining yellow toner
<b>Magenta Toner</b>	Remaining magenta toner
<b>Cyan Toner</b>	Remaining cyan toner
<b>Waste Toner</b>	Remaining waste toner bottle capacity
<b>Staple</b>	Remaining staples
<b>Fuser Oil</b>	Remaining oil in fuser web unit



### 4.3 Preference

This screen appears when you click the **Preference** menu on the **System** tab. It lets you make changes to the PageScope Light environment.



**Password** Type in the password here when a password is defined. Note that the password is case-sensitive, so be sure to type in upper-case and lower-case characters correctly. (The password you should type in here is the same as the administrator password you created for Fiery WebTools.)

**Refresh Rate** Type in a value to specify the number of seconds between screen refreshes. You can input a value from 30 to 300 seconds. The default setting is 60 seconds.

**Language** Select the screen language you want to use for PageScope Light.

- English
- German
- French
- Italian
- Spanish

**Apply Button** Click this button to apply any settings you have input or selected up to this point.

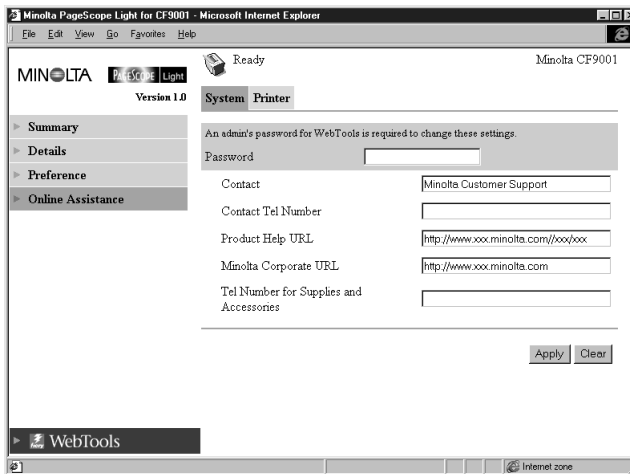
**Clear Button** Click this button to cancel any settings you have input or selected up to this point.

### Note

- The message **Invalid Password** appears on the screen if you input the wrong password. If this happens, click your Web browser's **Back** button to return to the previous page and configure your preferences again.

## 4.4 Online Assistance

This screen appears when you click the **Online Assistance** menu on the **System** tab. It shows information and lets you make settings related to product support.



**Password** Type in the password here when a password is defined. Note that the password is case-sensitive, so be sure to type in upper-case and lower-case characters correctly. (The password you should type in here is the same as the administrator password you created with Fiery WebTools.)

## 4 System Tab

---

**Contact** Type in the name of your product support counter.

**Contact Tel Number**

Type in the phone number of your product support counter.

**Product Help URL**

Type in the URL of your product information Website. Clicking the **Product Help URL** jumps to the Website you specify here.

**Minolta Corporate URL**

Type in the URL to the Minolta home page. Clicking the **Minolta Corporate URL** jumps to the Website you specify here.

**Tel Number for Supplies and Accessories**

Type in the telephone number of the support counter you need to contact to order consumables and accessories.

**Apply Button** Click this button to apply any settings you have input up to this point.

**Clear Button** Click this button to cancel any settings you have input up to this point.

### Note

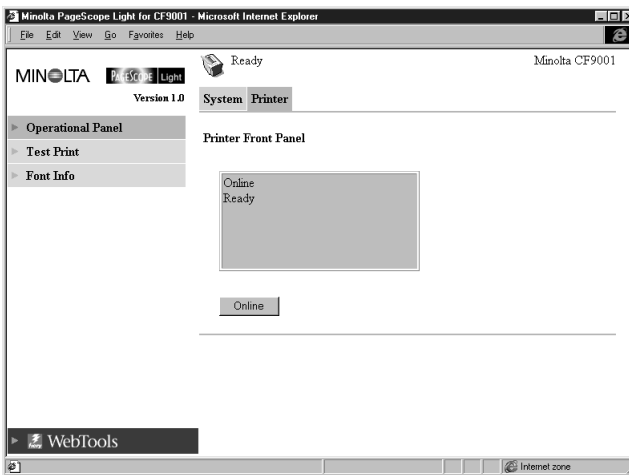
- The message **Invalid Password** appears on the screen if you input the wrong password. If this happens, click your Web browser's **Back** button to return to the previous page and configure your online assistance settings again.

## 5 Printer Tab

The **Printer** tab shows information and settings for printing on the CF9001.

### 5.1 Printer Front Panel

This screen appears when you click the **Operational Panel** menu on the **Printer** tab. It provides on-screen emulation of the printer controller's operational panel.

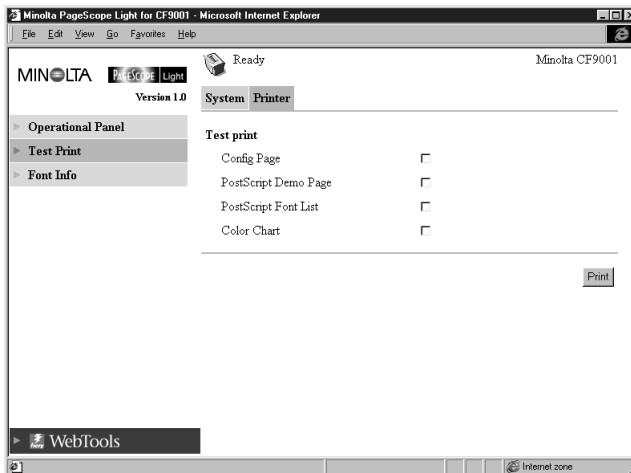


**Display** This area shows the printer controller message display. Messages are the same as the Status Display messages that appear in the upper part of the window.

**Online Button** Toggles the printer controller network connection on line and off line

### 5.2 Test Print

This screen appears when you click the **Test Print** menu on the **Printer** tab. It lets you select a test print page and execute a test print operation.



**Config Page** Insert a check mark into the box to print the printer controller setup page.

**PostScript Demo Page** Insert a check mark into the box to print the PostScript demo page.

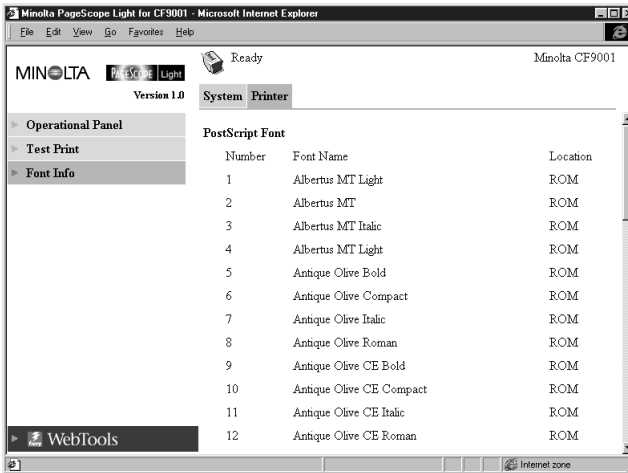
**PostScript Font List** Insert a check mark into the box to print the PostScript font list.

**Color Chart** Insert a check mark into the box to print the color chart.

**Print Button** Click this button to execute a test print operation.

## 5.3 PostScript Font

This screen appears when you click the **Font Info** menu on the **Printer** tab. It shows a list of PostScript fonts built into the printer controller. The names of fonts downloaded to the printer controller from the computer are added to the bottom of the list.






**Font Name**      Font name

**Location**      Storage location of the font (ROM, RAM, HDD)


## Appendix Status List

The current CF9001 status is indicated by an icon in the upper part of the window, and by text next to the icon in the upper text area. More detailed messages appear in the lower text area. The contents of the list are arranged in order of importance (most critical first).

Icon	Status (Upper Text)	Details (Lower Text)	Description
	Fatal	Controller Malfunction	
	Error	Cover Open	
		Parts Missing	Consumable is not installed correctly.
		Paper Jam	
		Remainder Paper	Paper was left in electronic document handler or scanner after completion of job.
		Paper Empty	Paper tray is empty.
		Life of Parts	Consumable is depleted.
		Paper Capacity Over	Capacity of output tray was exceeded.
		(Blank)	Unidentified error.
	Attention	Off Line	Connection to printer controller network is offline.
		Scanner Busy	
		Option Parts Malfunction	
		Life of Parts	Consumable is depleted.
		Near Life of Parts	Consumable is nearing depletion.

## *Appendix Status List*

---

<b>Icon</b>	<b>Status (Upper Text)</b>	<b>Details (Lower Text)</b>	<b>Description</b>
	Ready	Warming Up	
		Power Save	The machine is in power save mode.
		Processing	
		(Blank)	The machine is ready.



---

---



MINOLTA

*Copyright*  
**2000 MINOLTA CO., LTD.**

The information contained in this manual is subject to change without notice to incorporate improvements made on the product or products the manual covers.

MINOLTA CO., LTD.  
Image Information Products Marketing Headquarters  
3-13, 2-chome, Azuchi-machi, Chuo-ku, Osaka. 541-8556, Japan