

EtherFast LAN

10/100M Unmanaged Switch

[SP605K / SP608K](#)
[SP608EB / SP608P](#)
[SP616B / SP616EB](#)
[SP624EA / SP616R](#)
[SP624R / SP659C](#)

Gigabit Switch

[SP6105 / SP6108](#)
[SP6108WS / SP676C](#)
[SP684C / SP6148WS](#)

10/100M Web Smart Switch

[SP607FA / SP607FB](#)
[SP6008WS / SP624](#)
[SP659B / SP6052WS](#)

10/100M Managed Switch

[SP1658B / SP1678A](#)
[SP1659P](#)

Mini GBIC Fiber Module

[M363A / M363B-10](#)

Gigabit Managed Switch

[SP1684A / SP6524A](#)
[SP6524F](#)

Modular Switch

[SP617 / SP1626F](#)

Power over Ethernet

PoE Switch

[SP608P / SP6008PWS](#)
[SP1659P](#)

PoE Midspan/Kit

[SP3908 / SP3924](#)
[SP390BI / SP390BS](#)
[SP390-5,9,12 / SP391](#)

Fiber Optics

Media Converter

[SP373F / SP373G](#)
[SP373G-20,40,60](#)
[SP342C-20 / SP343C-20](#)
[SP362C / SP363C-10,20](#)

Converter Chassis

[SP382A / SP1386 / SP1387](#)

VDSL

VDSL/VDSL2 Modem and Switch

[SP3501AM,AS / SP3508A](#)
[SP3524A / SP3501BM,BS](#)
[SP3508B / SP3524B](#)

Wireless LAN

WLAN Adapter

[SP906GK / SP906GL](#)
[SP906GN / SP906N](#)
[SP907GK / SP907GH](#)
[SP907GN / SP907N](#)
[SP908GK / SP908GL](#)

WLAN Router

[SP916GK / SP916GN / SP916N](#)

WLAN Access Point

[SP918GK / SP9121](#)
[SP9125 / SP912 / SP912GH](#)

WLAN Outdoor AP/Bridge

[SP9012 / SP915-1000 / SP915G](#)

WLAN Antenna

[SP920K-7 / SP920MA-8](#)
[SP920MA-12 / SP920FB](#)
[SP920MA-10E / SP920PA2-24](#)
[SP920LA-7 / SP920LA-12](#)
[SP920LA-12E / SP920LA-18E](#)

WLAN Accessories

[C920B-1,C920B-3 / C920-5,C920C-10](#)
[C920D-5,C920D-10 / C920G / C925](#)

Wireless Projector Server

[SP926](#)

Bluetooth

[SP935C / SP396C](#)

Hotspot & Network Access Controller

Hotspot & Network Access Controller

[SP913 / SP1910 / SP1900](#)

Broadband Internet

56K Modem

[SP3008UB / SP3018S](#)
[SP150KD / SP3008EB](#)

ADSL

[SP3302A / SP3361 / SP3362A](#)
[SP3364F / SP3366 / SP3367A](#)
[SP3368 / SP3367N](#)

Broadband Router

[SP880B / SP881B](#)
[SP883B / SP891](#)
[SP888D / SP888BP](#)

ISDN

[SP3200A / SP3200AL](#)

IP Telephony

Analog Gateway, FXO

[SP5052A / SP5054A /](#)
[SP5052A,S / SP5054A,S](#)
[SP5058](#)

Analog Gateway, FXS

[SP5001C,S / SP5001D,S](#)
[SP5002A,S / SP5002,S](#)
[SP5004,S](#)

Analog Gateway, FXS/FXO

[SP5014 / SP5014,S / SP5018](#)

IP Phone

[SP5100 / SP5100,S / SP5101 / SP5102](#)

IP PBX

[SP5211 / SP5315](#)

Digital Gateway

[SP5060 / SP5064](#)

SIP Proxy Server

[SP5210 / SP5210-200 / SP5210-500](#)
[SP5210K](#)

Digital Signage

Digital Signage Network Player

[SP966](#)

KVM

Desktop KVM Switch

[SP212D / SP214D / SP212E / SP212EL](#)
[SP214E / SP214EL](#)

Rack Mount KVM Switch

[SP218D / SP226D](#)
[SP201-180 / SP1200A](#)

IP Surveillance

Indoor IP Camera

[SP5511 / SP5511W / SP5521](#)
[SP5521W / SP5531 / SP5531W](#)

Outdoor IP Camera

[SP5552-30 / SP5552-26](#)

Print Server

Print Server

[SP755D / SP756 / SP756W / SP766](#)
[SP766W / SP781 / SP781W](#)

Structured Cabling

Copper Cable

[SP1101E / SP1101S / SP1103E](#)
[SP1103E / SP1103S / SP1102E](#)
[SP1102S](#)

Fiber-Optic Cable

[SP1105A-3 / SP1105A-5](#)
[SP1107A-3 / SP1107A-5 / SP1106A-3](#)
[SP1106A-5 / SP1106B-3 / SP1106B-5](#)
[SP1105B-3 / SP1107B-3 / SP1107B-5](#)

Patch Panel & Wall Socket

[SP1161 / SP1165 / SP1161S](#)
[SP1165S / SP1162A-1 / SP1162A](#)
[SP1162S-1 / SP1162S-2](#)

NIC & Powerline Bridge

Network Adapter

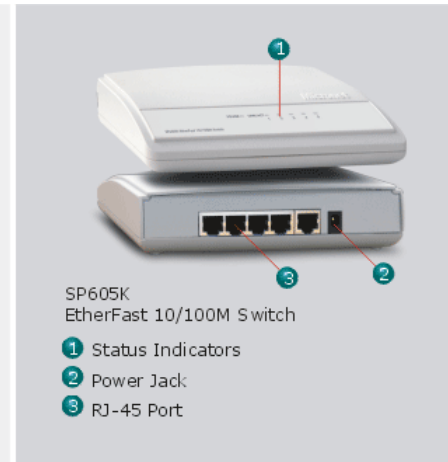
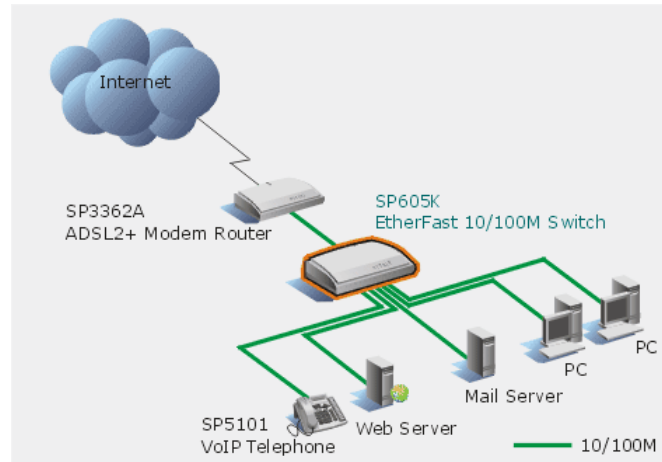
[SP2500RS / SP2500RSW / SP160TA](#)
[SP2612R / SP2612E](#)

Powerline Bridge

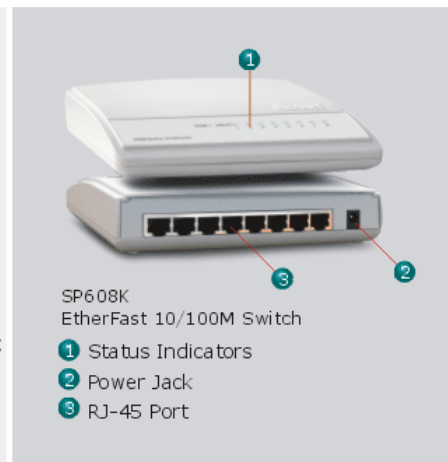
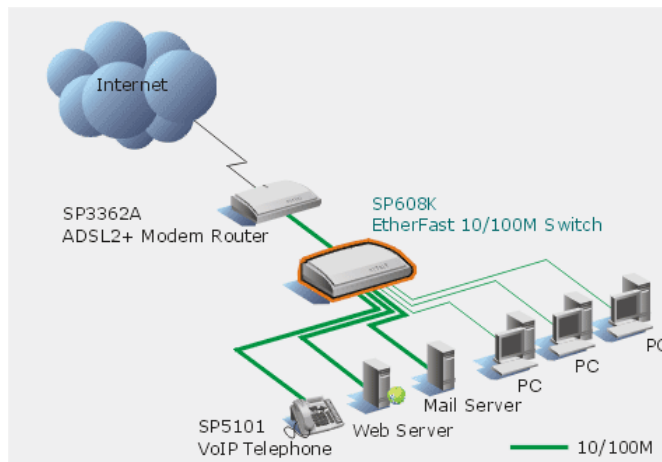
[SP951A / SP951B](#)

10/100M Unmanaged Switch

SP605K

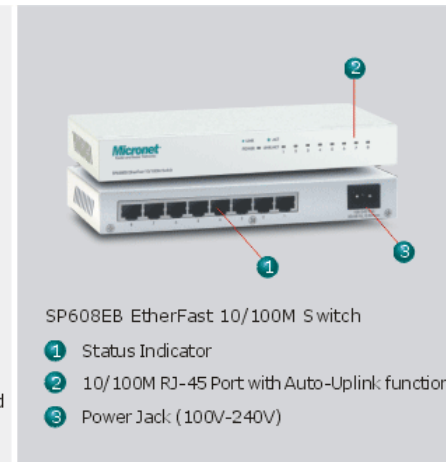
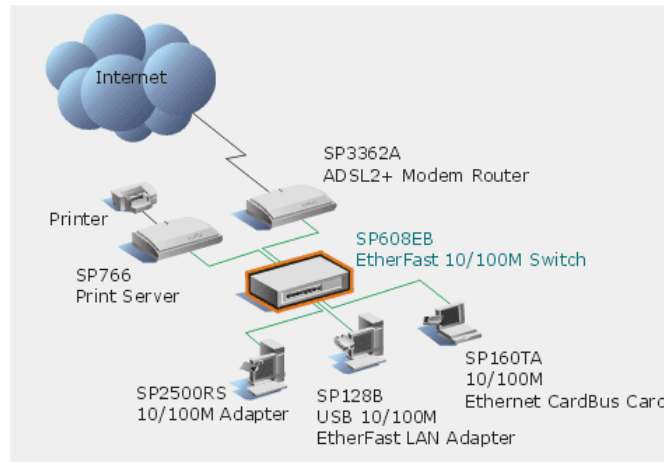


SP608K



10/100M Unmanaged Switch

SP608EB

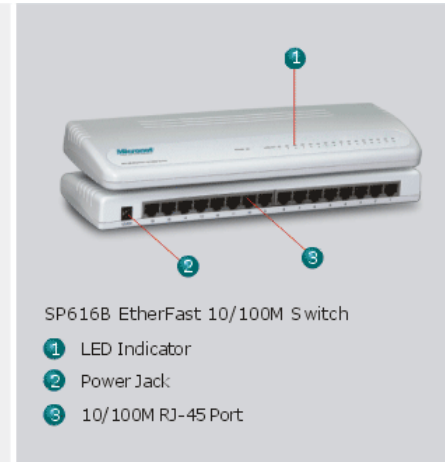
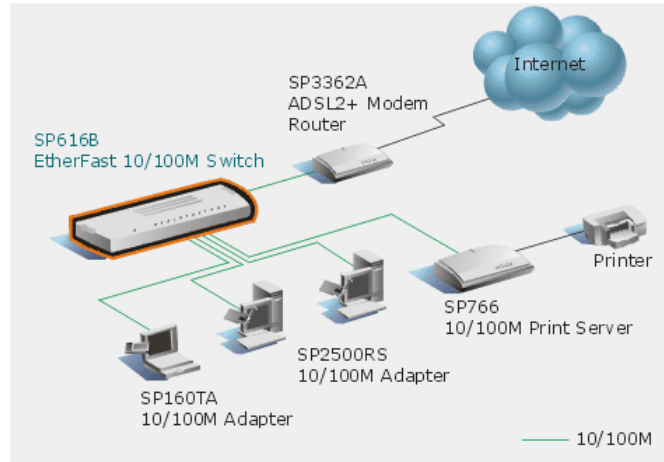


SP608P

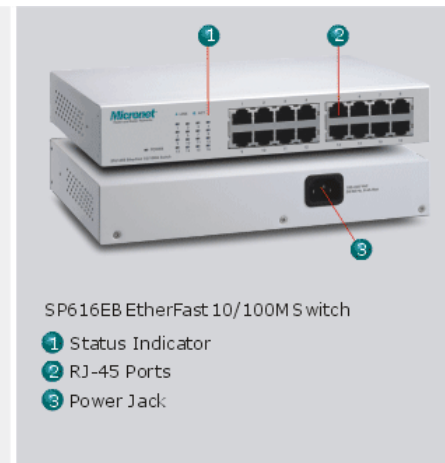
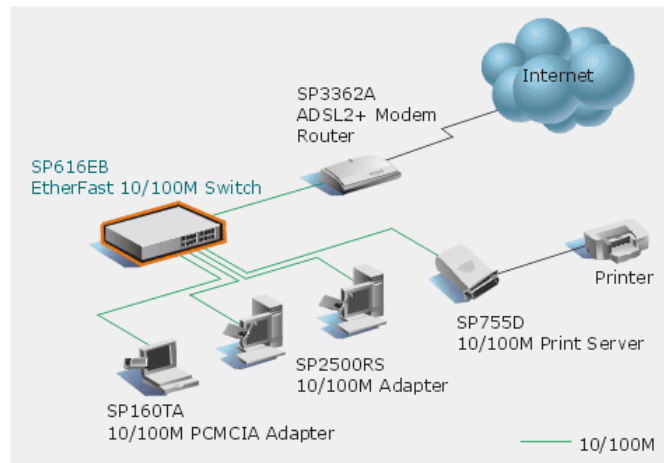


10/100M Unmanaged Switch

SP616B

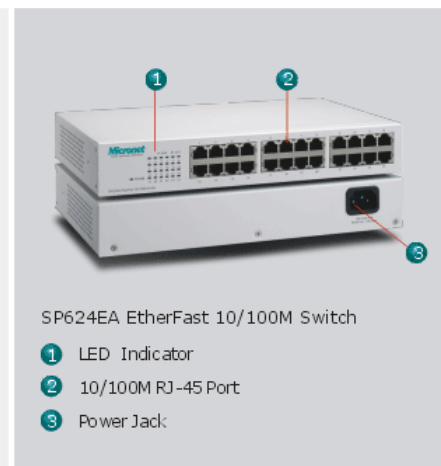
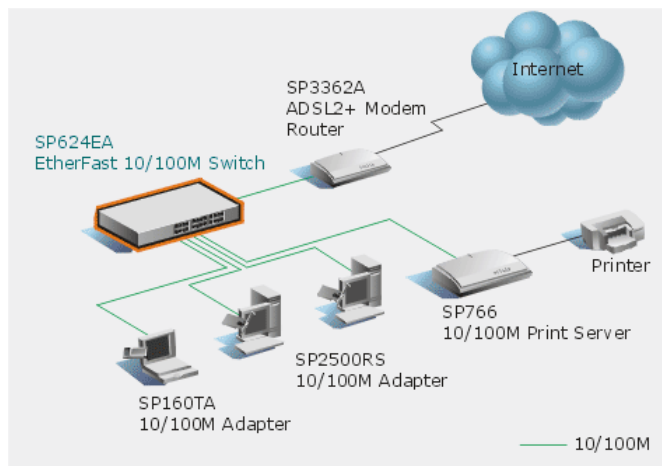


SP616EB

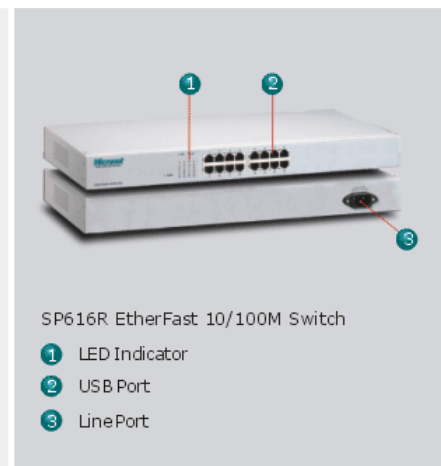
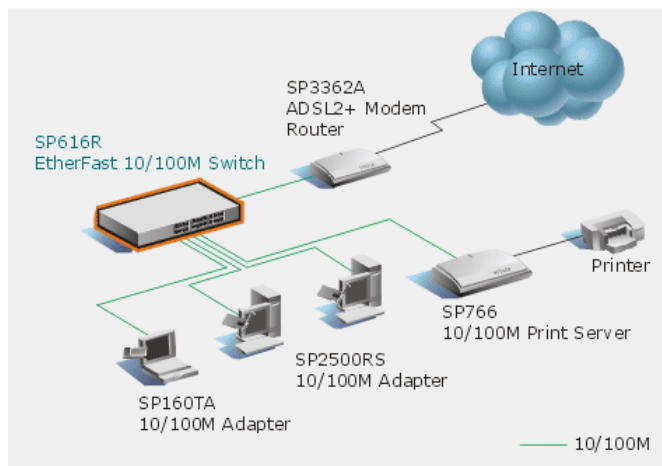


10/100M Unmanaged Switch

SP624EA

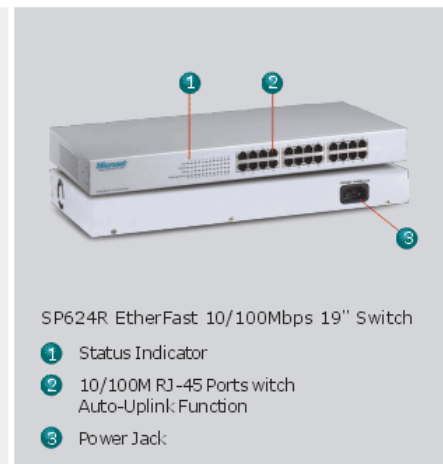
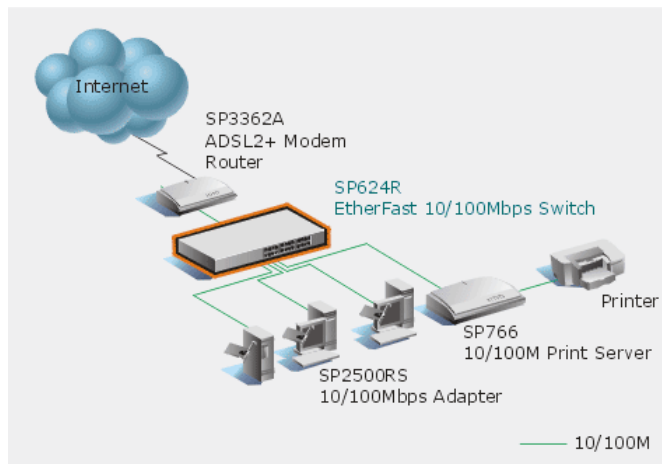


SP616R

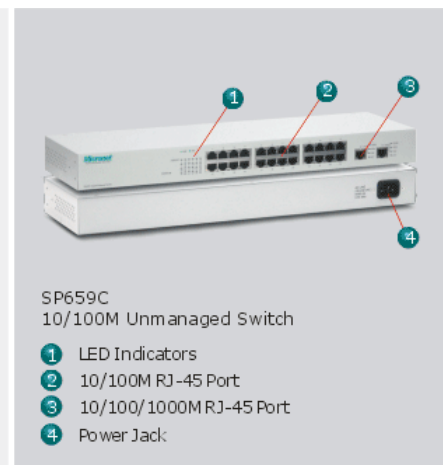
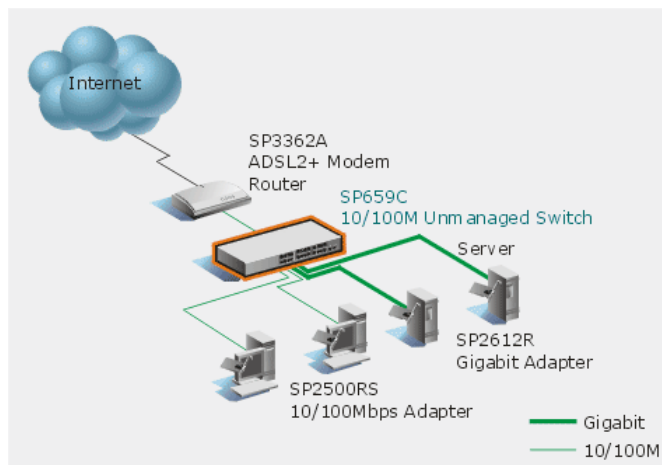


10/100M Unmanaged Switch

SP624R

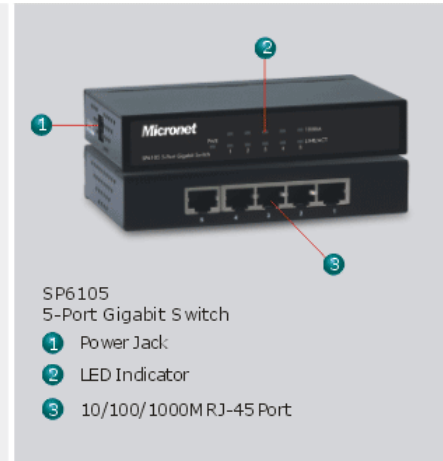
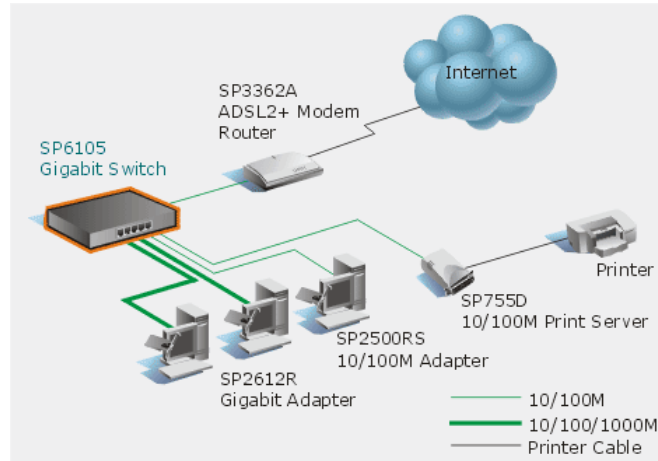


SP659C

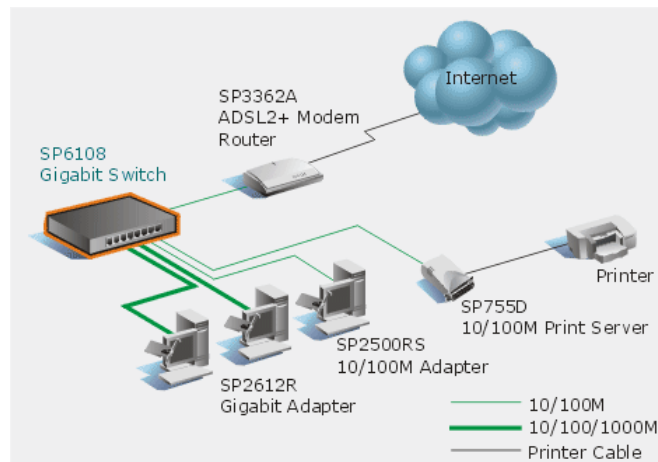


Gigabit Switch

SP6105

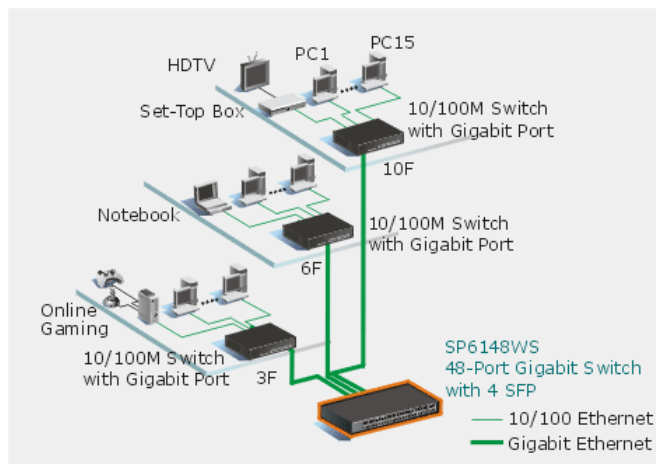


SP6108

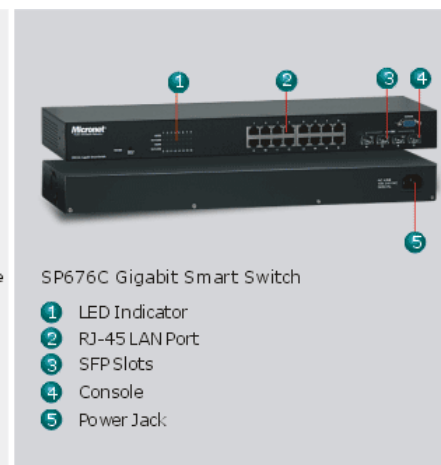
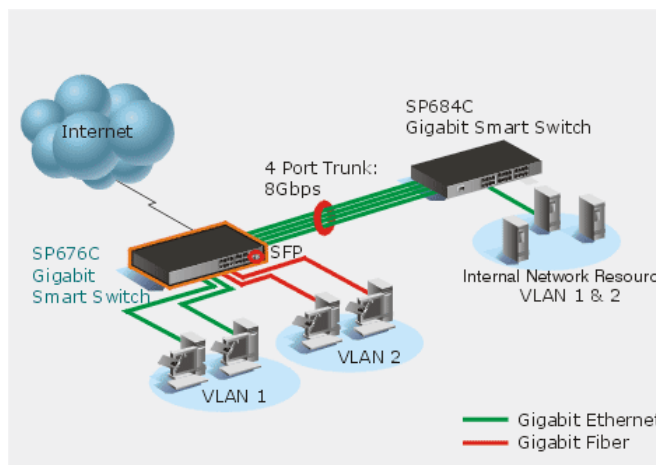


Gigabit Switch

SP6108WS

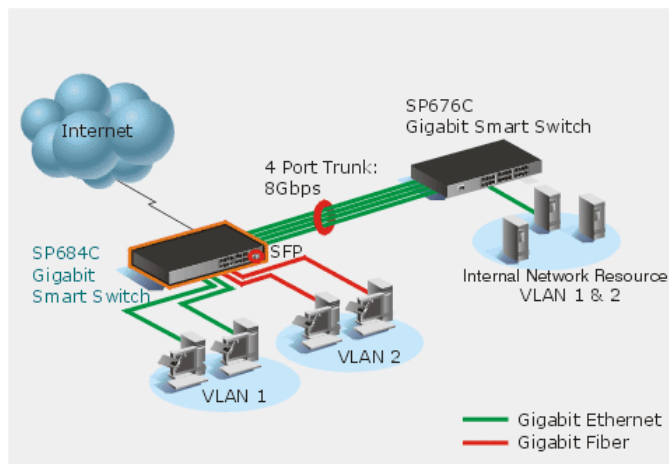


SP676C

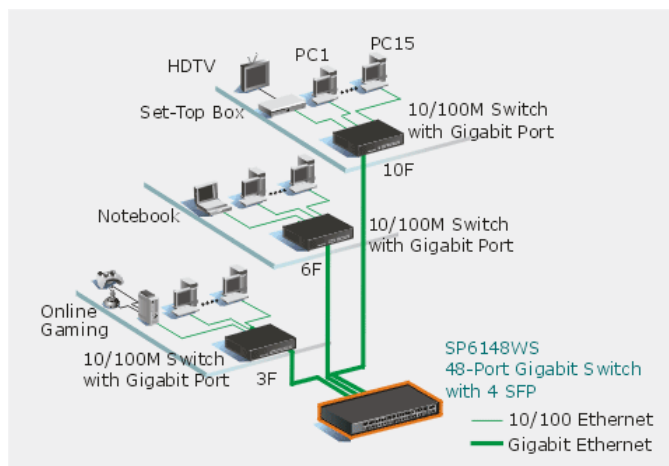


Gigabit Switch

SP684C

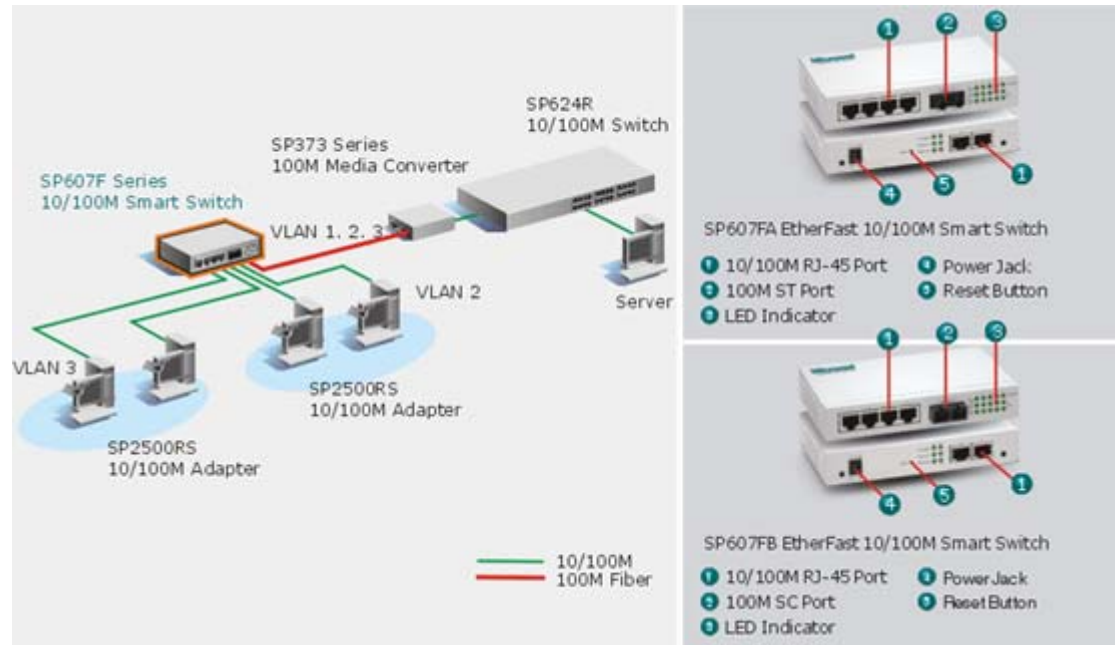


SP6148WS



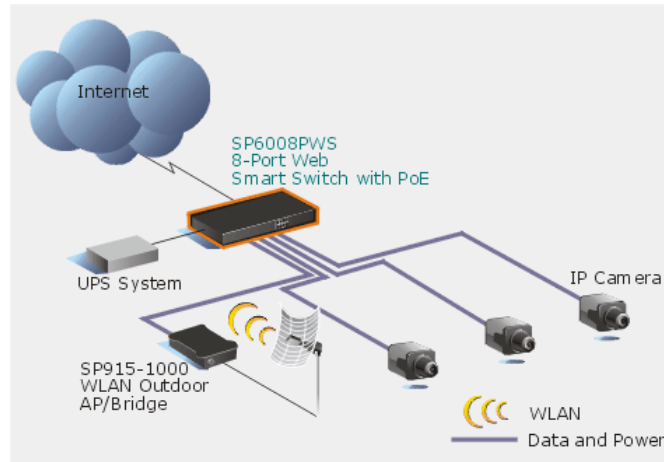
10/100M Web Smart Switch

SP607FA
SP607FB

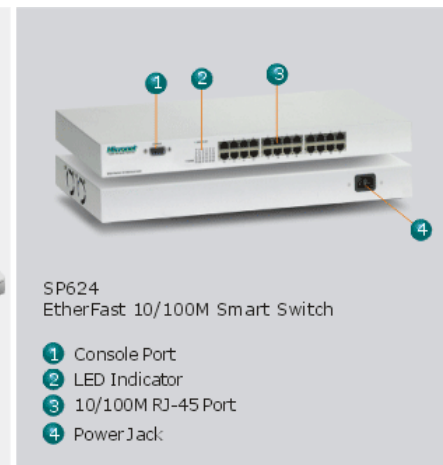
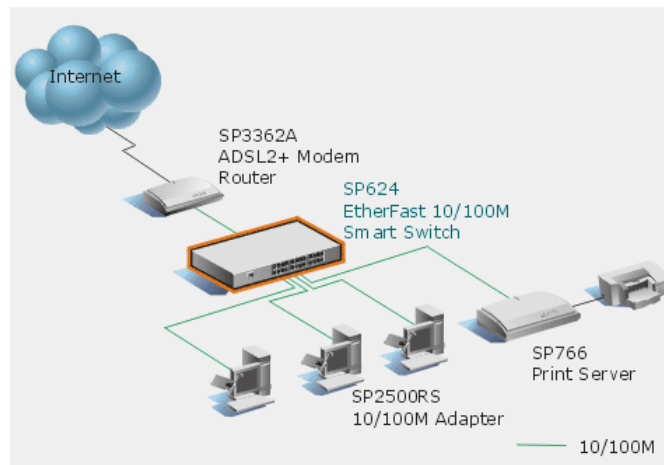


10/100M Web Smart Switch

SP6008PWS

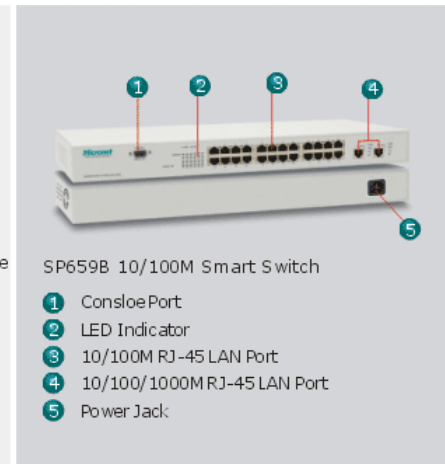
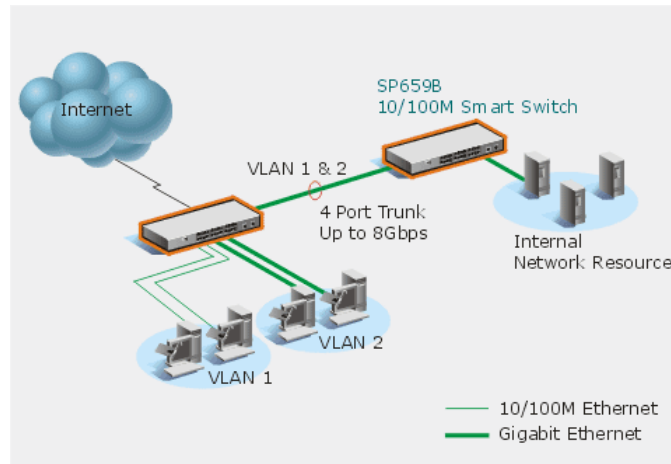


SP624

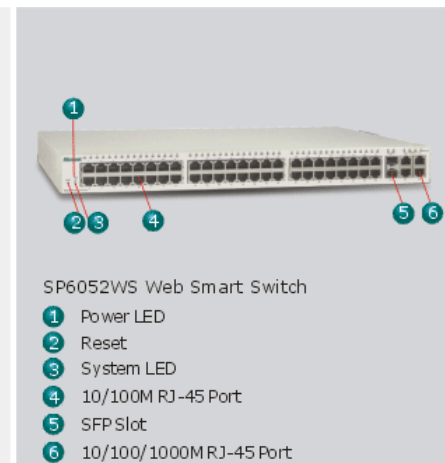
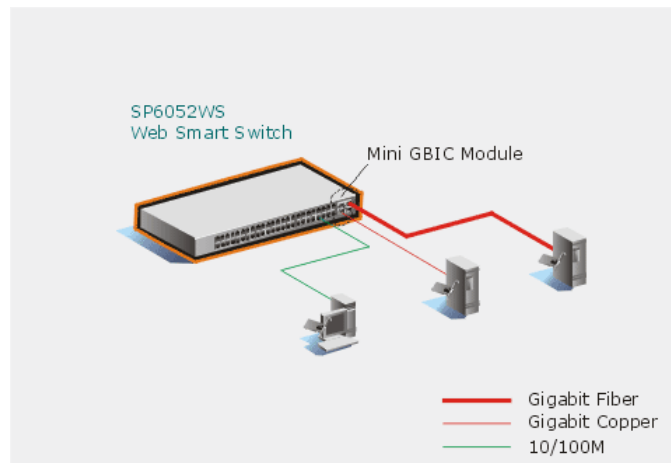


10/100M Web Smart Switch

SP659B

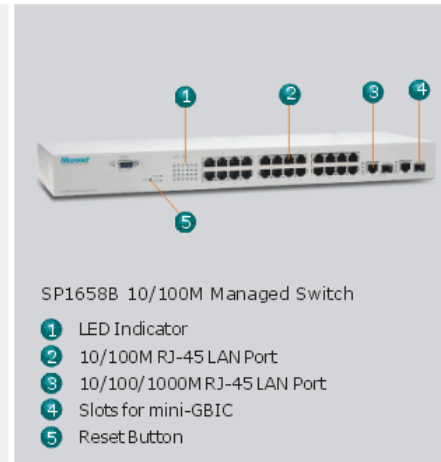
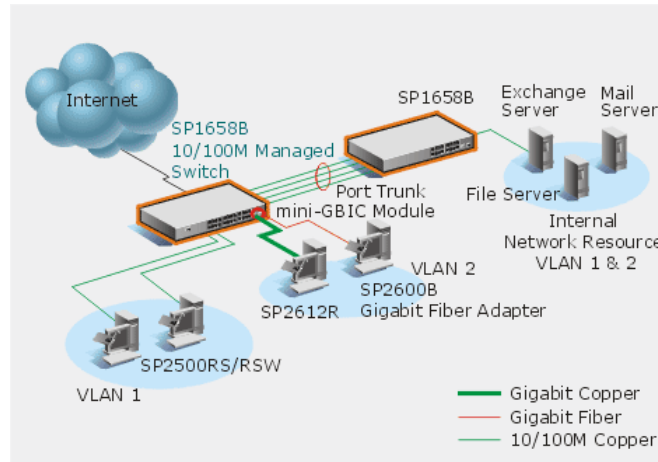


SP6052WS

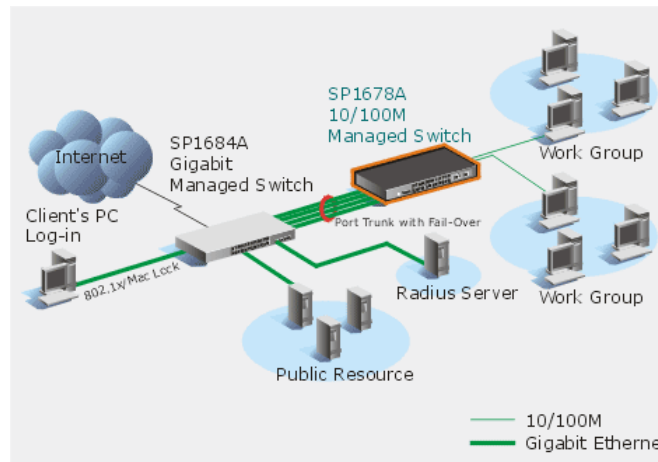


10/100M Managed Switch

SP1658B

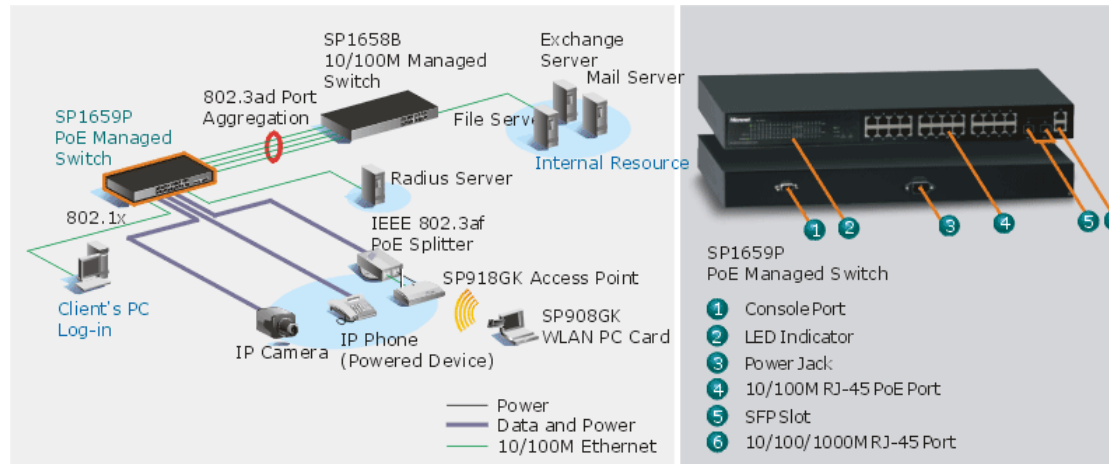


SP1678A



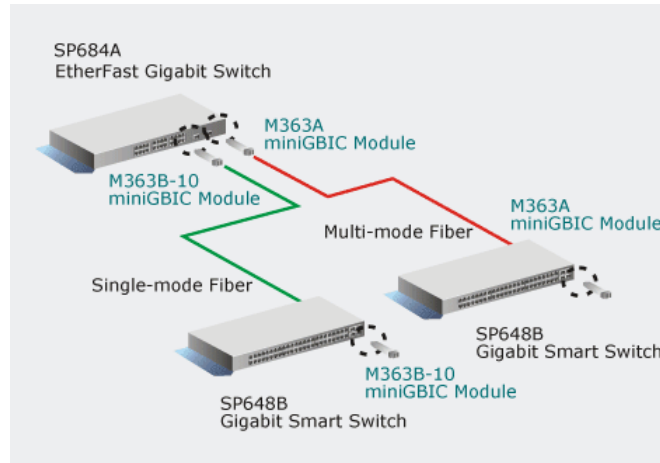
10/100M Managed Switch

SP1659P

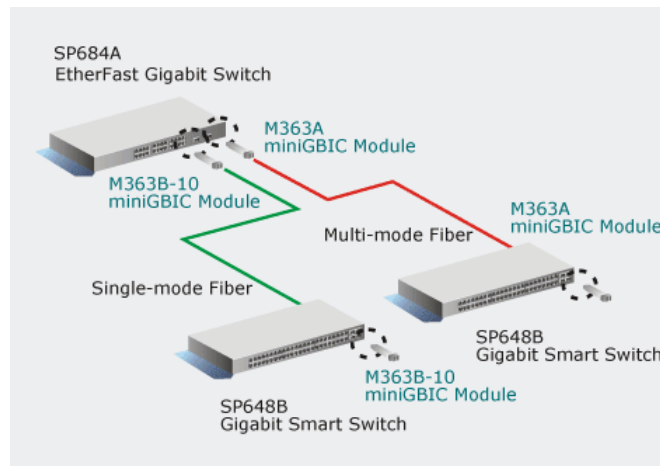


Mini GBIC Fiber Module

M363A

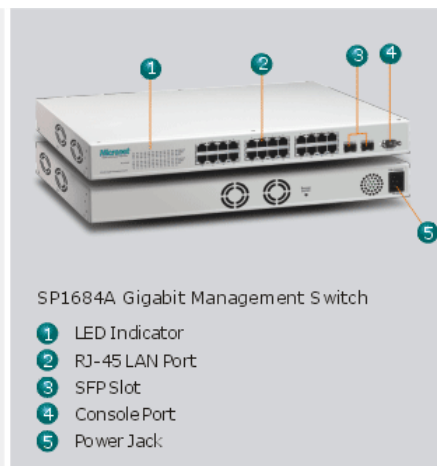
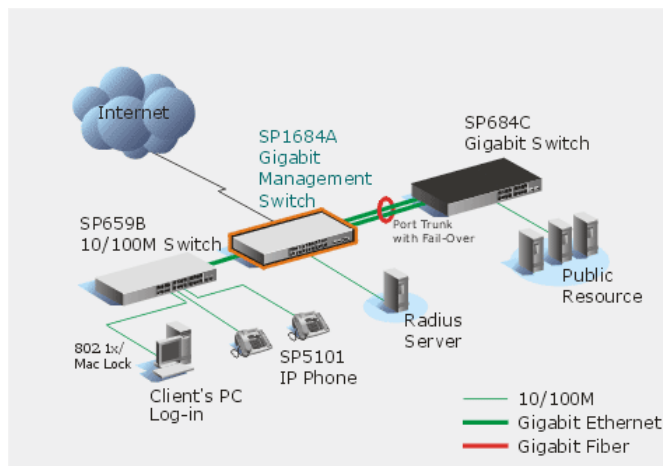


M363B

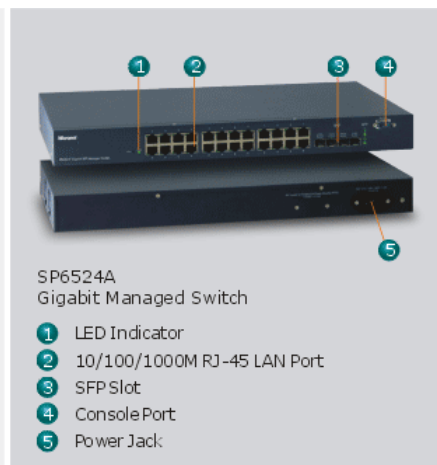
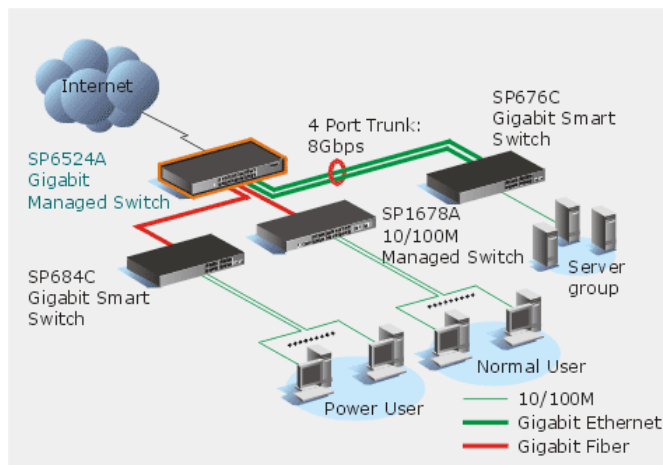


Managed Switch

SP1684A

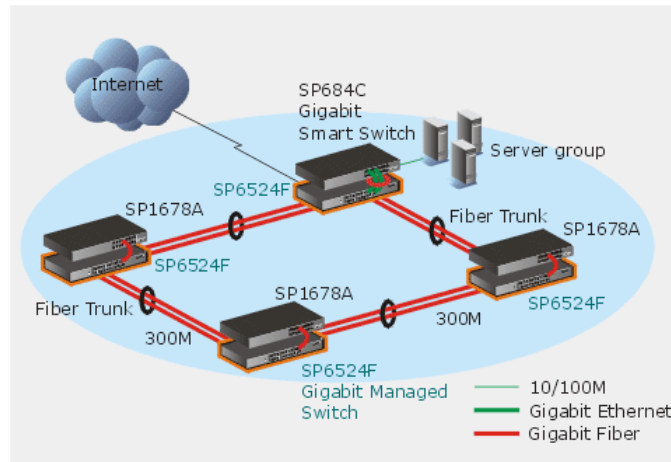


SP6524A



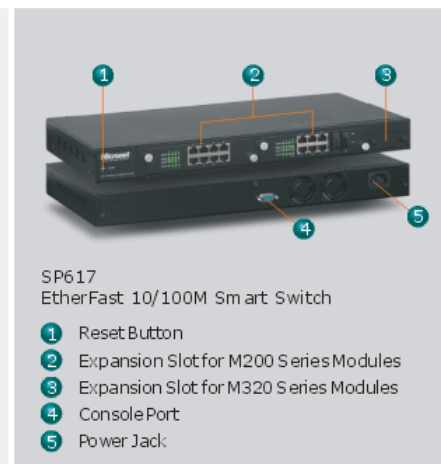
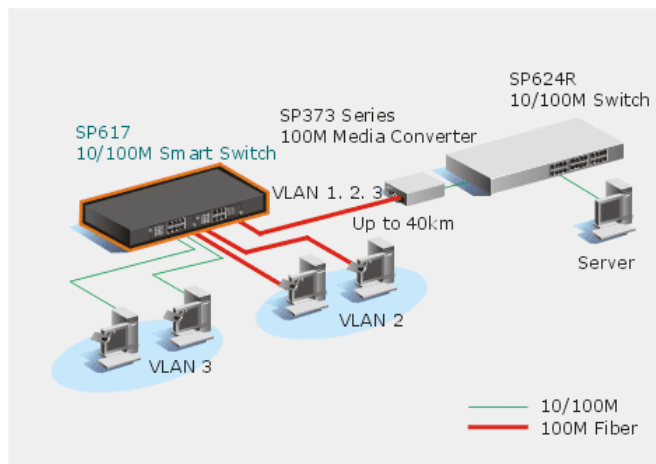
Managed Switch

SP6524F

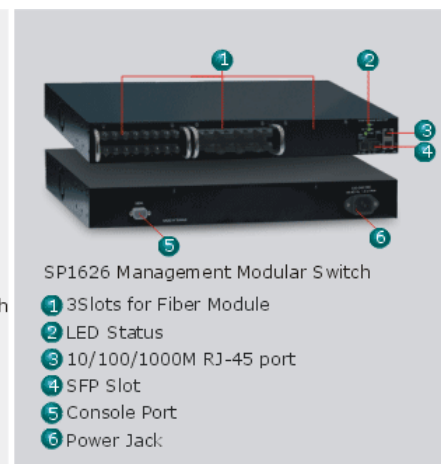
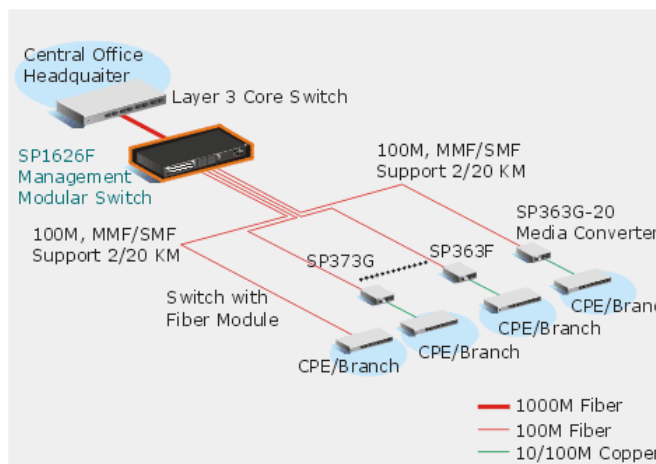


Modular Switch

SP617

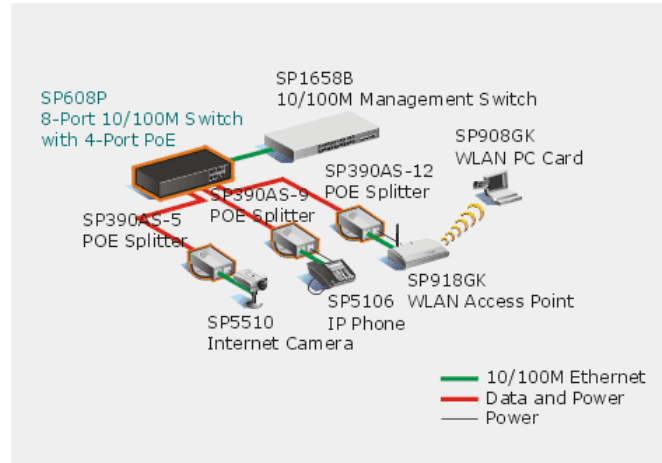


SP1626F

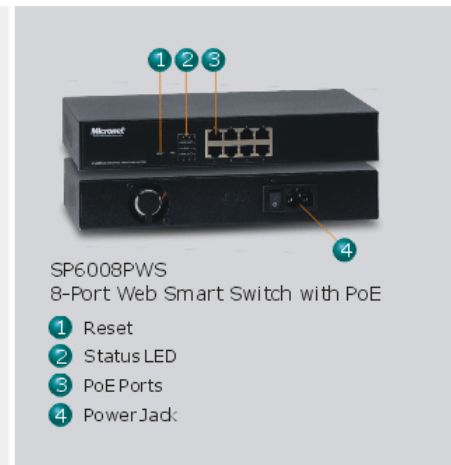
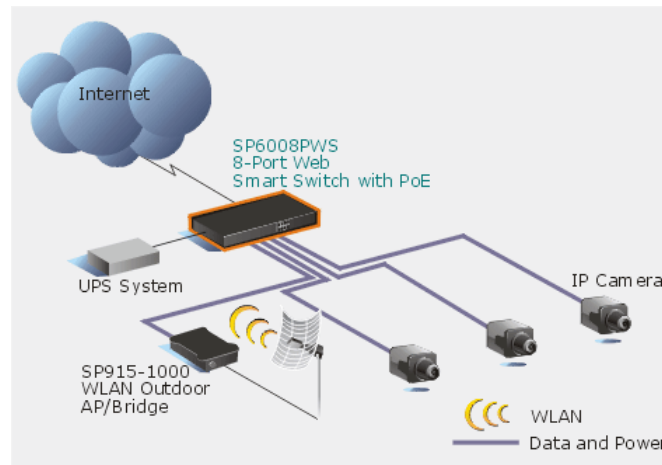


PoE Switch

SP608P

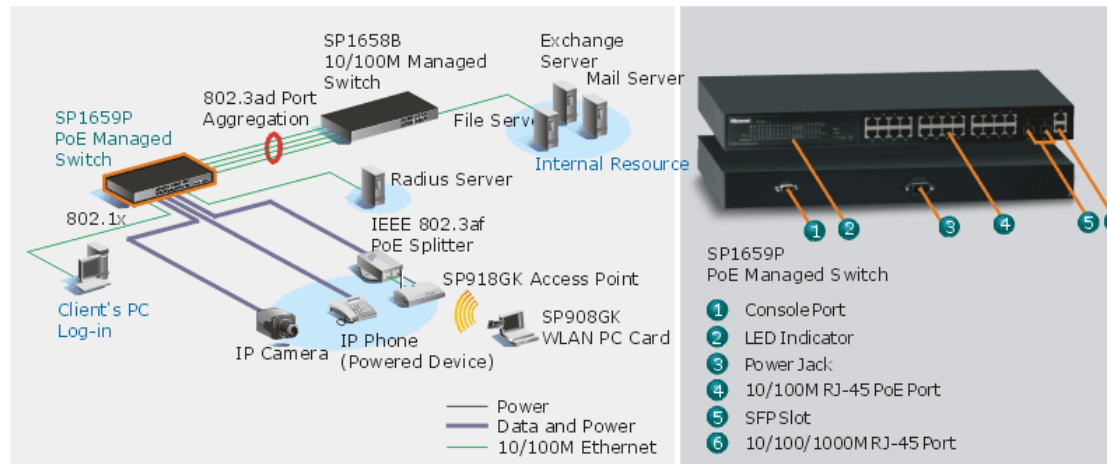


SP6008PWS



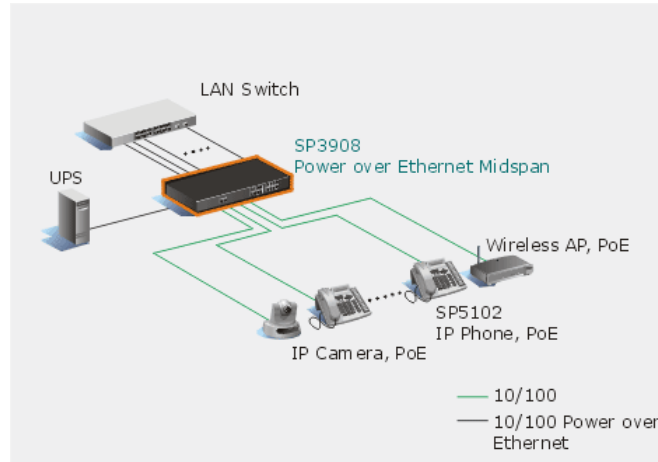
PoE Switch

SP1659P

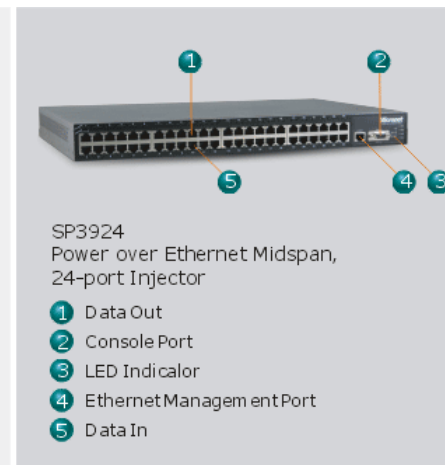
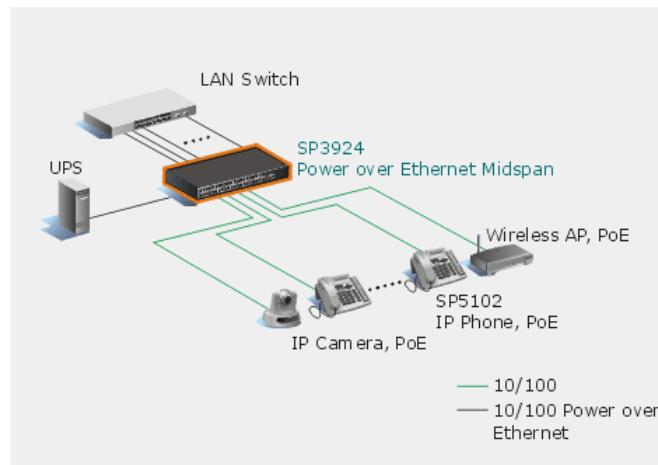


PoE Midspan/Kit

SP3908

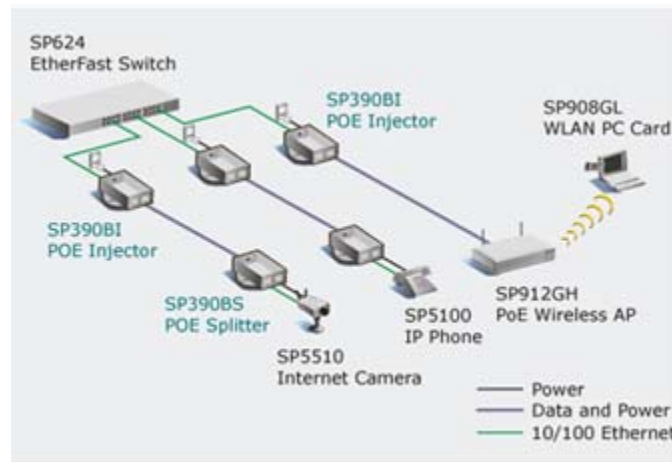


SP3924

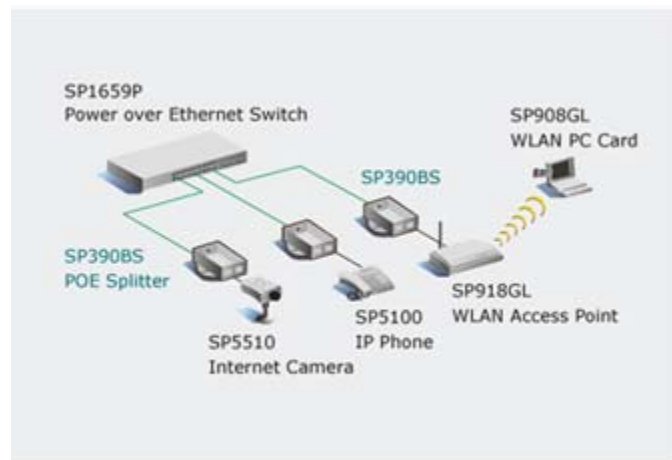


PoE Midspan/Kit

SP390BI

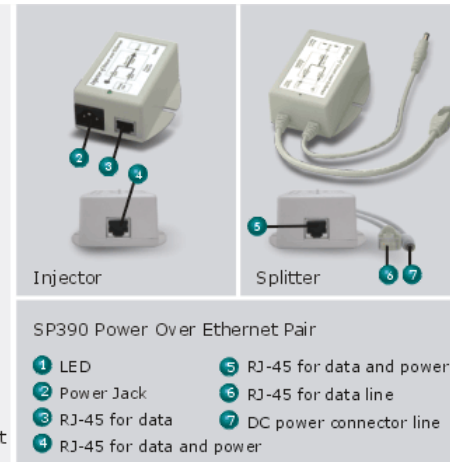
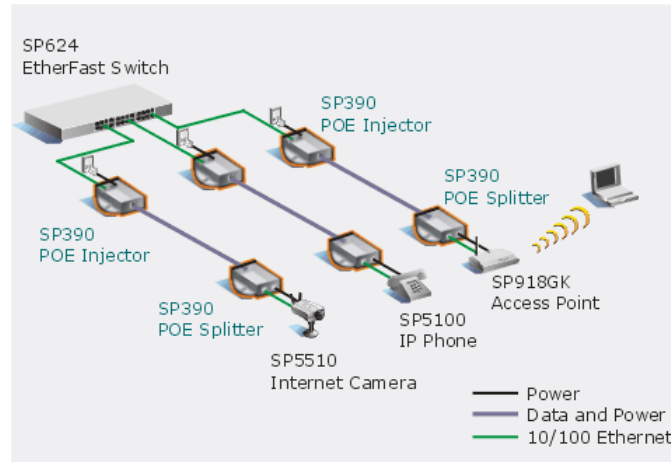


SP390BS

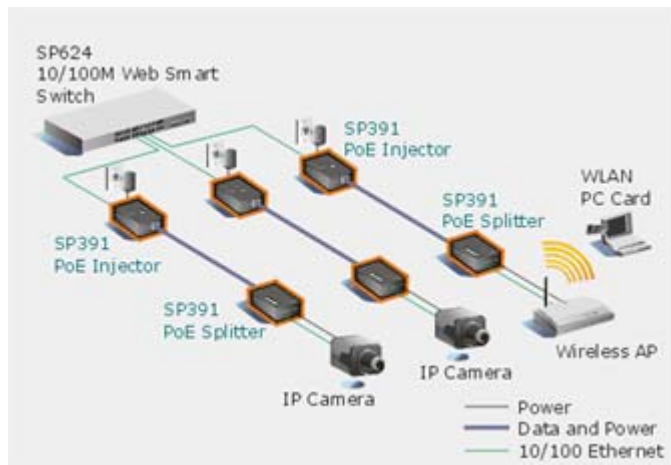


PoE Midspan/Kit

SP390-5/9/12

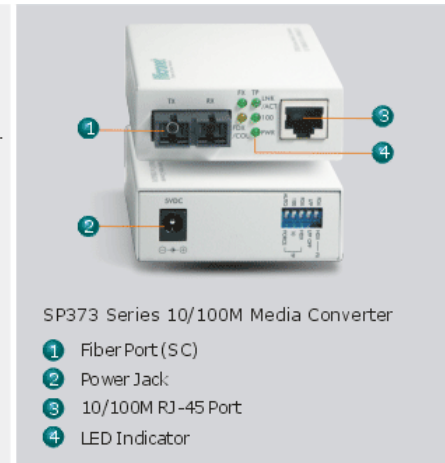
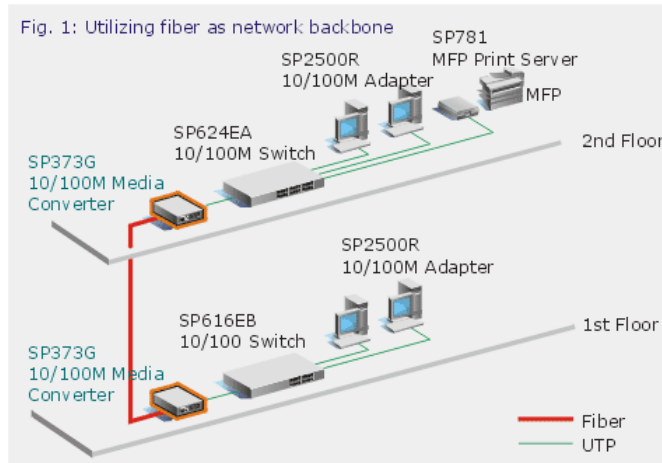


SP391

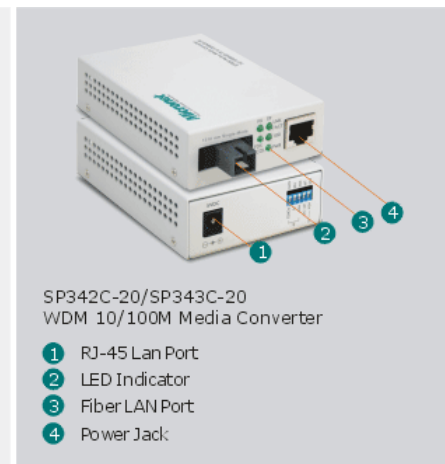
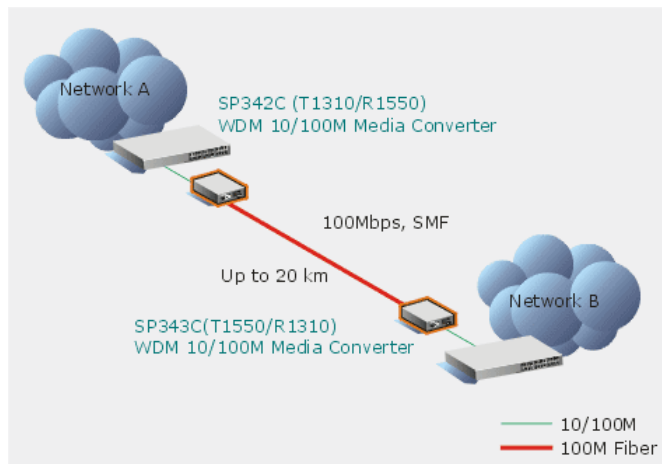


Media Converter

SP373F/SP373G/
SP373G-20/40/60



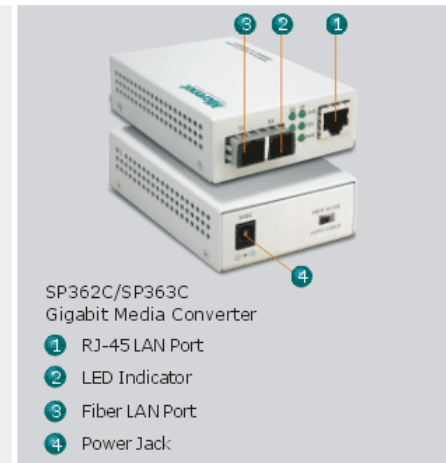
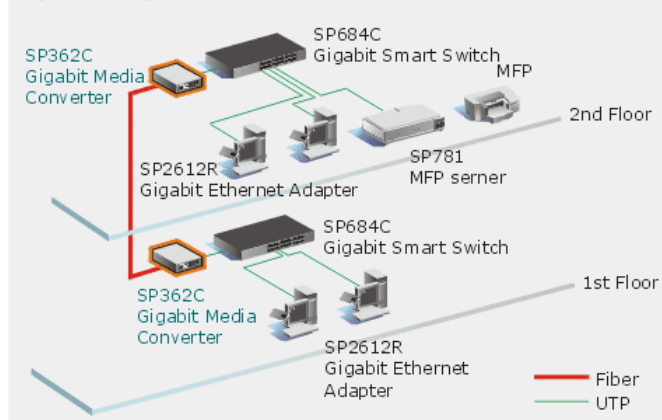
SP342C-20/SP343C-20



Media Converter

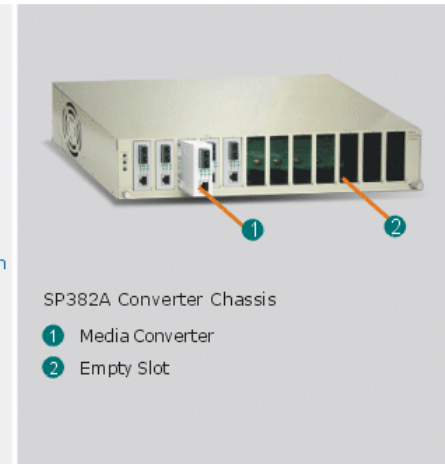
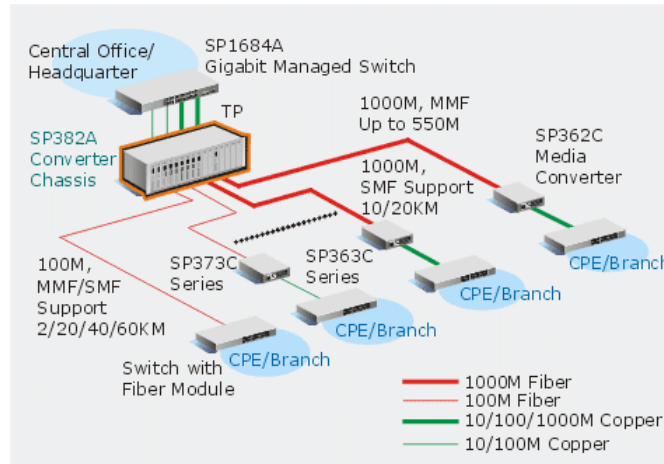
SP362C/SP363C-10/20

Fig. 1: Utilizing fiber as network backbone

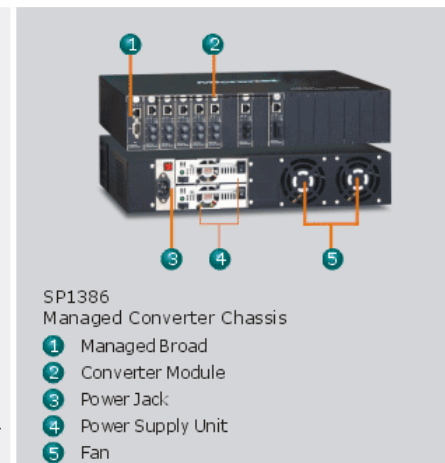
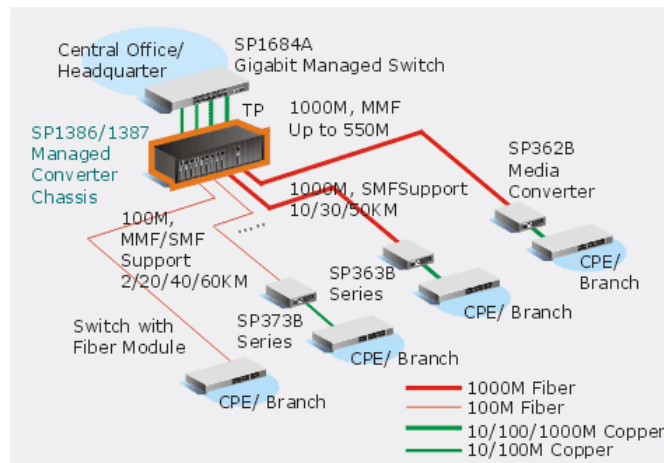


Converter Chassis

SP382A

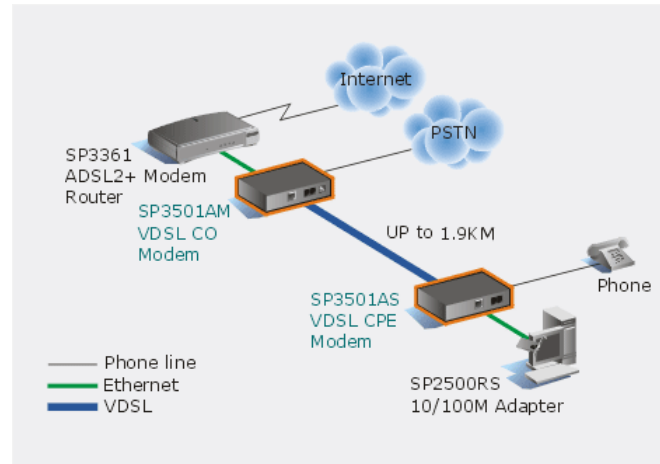


SP1386/ SP1387

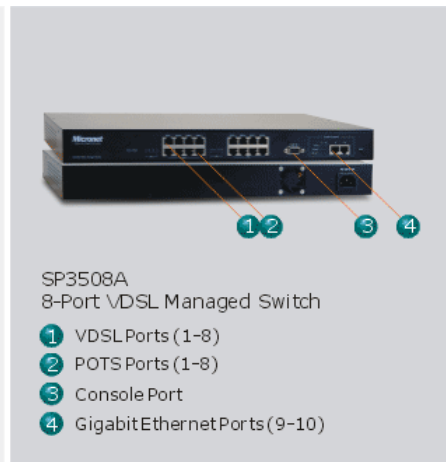
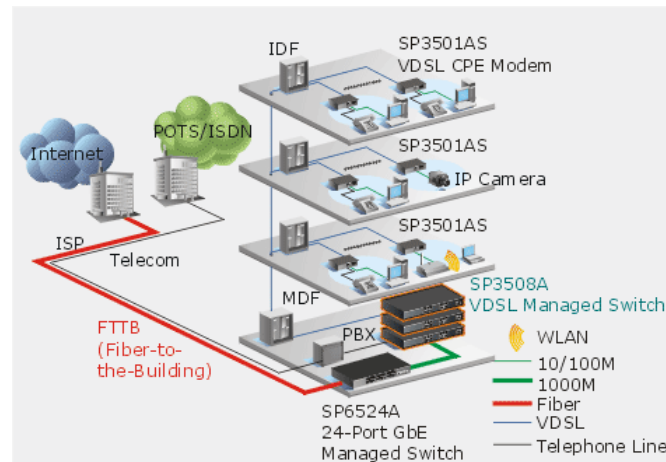


VDSL/VDSL2 Modem and Switch

SP3501AM/AS

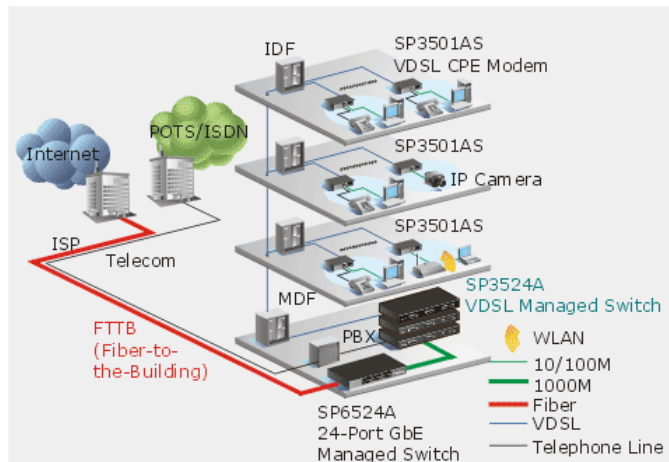


SP3508A

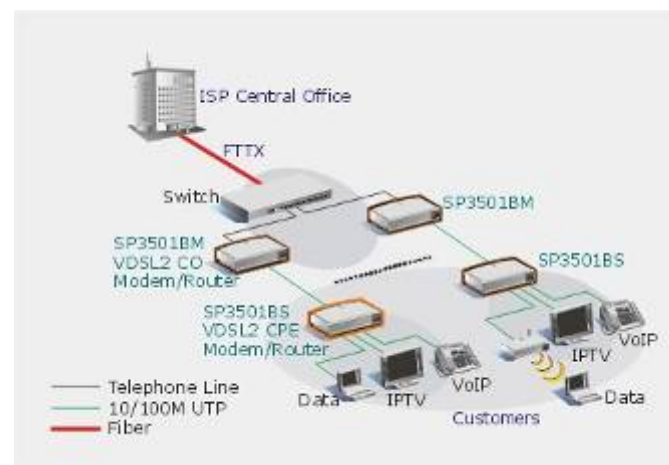


VDSL/VDSL2 Modem and Switch

SP3524A

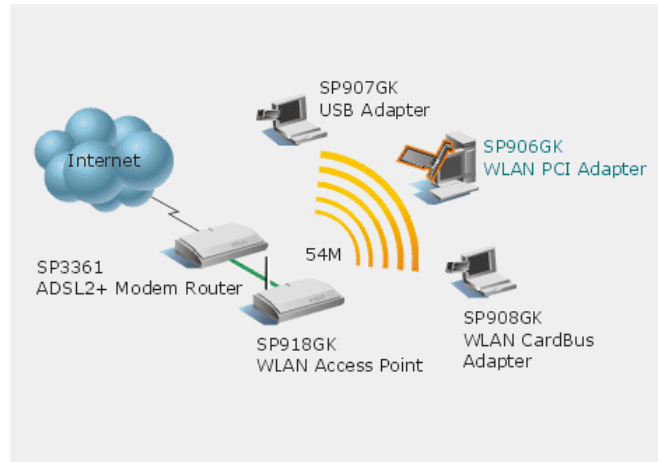


SP3501BM/BS

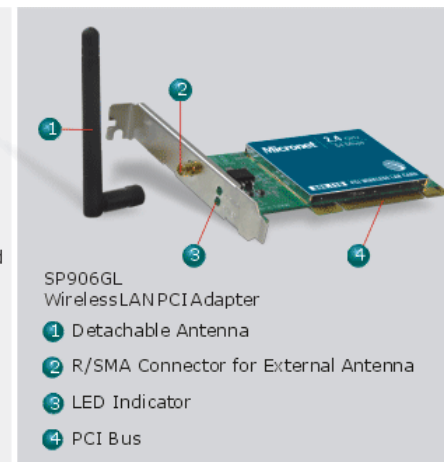
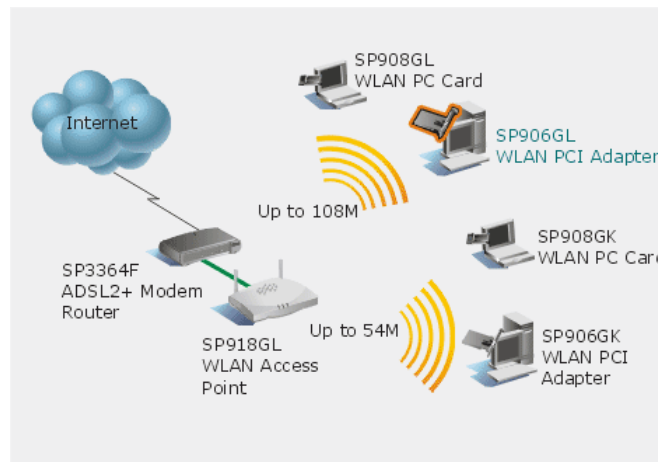


WLAN Adapter

SP906GK

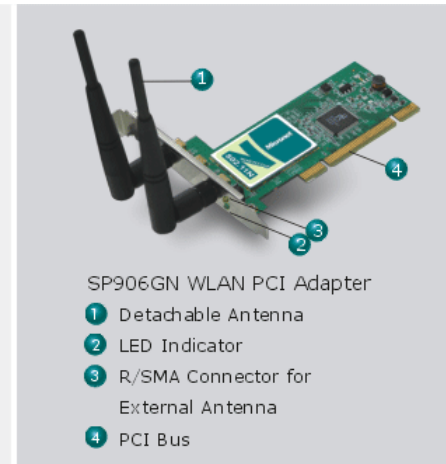
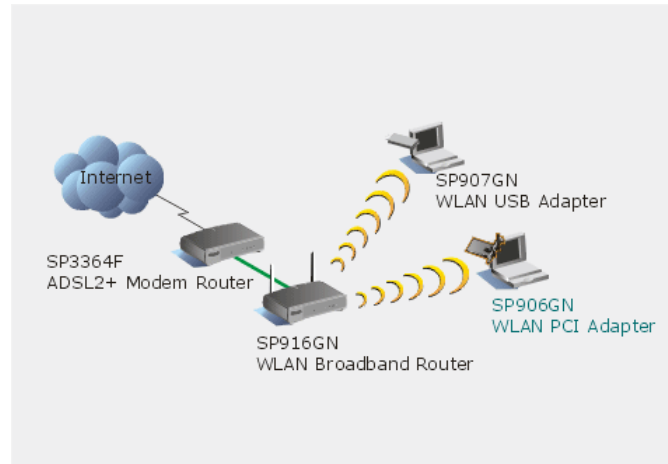


SP906GL

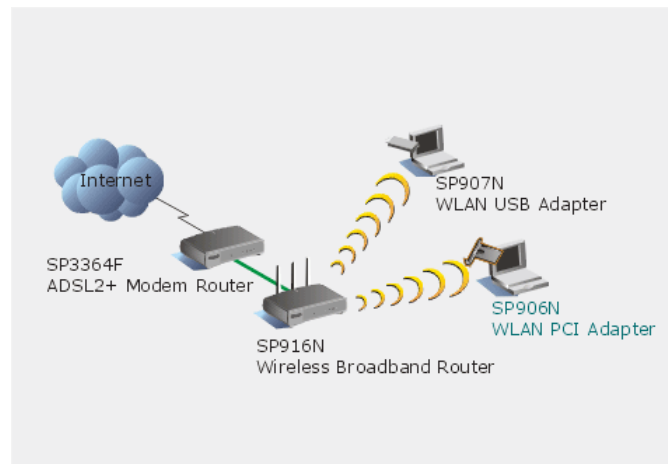


WLAN Adapter

SP906GN

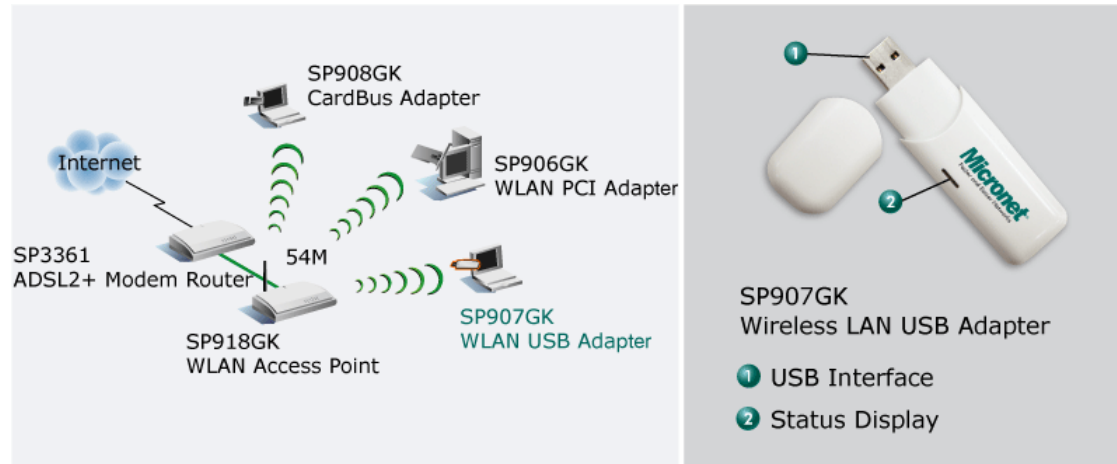


SP906N



WLAN Adapter

SP907GK



The diagram illustrates a network setup for the SP907GK. It shows an Internet cloud connected to an SP3361 ADSL2+ Modem Router. The router is connected to an SP918GK WLAN Access Point. A laptop is connected to the router via an SP908GK CardBus Adapter. Another laptop is connected to the access point via an SP906GK WLAN PCI Adapter. A third laptop is connected to the access point via an SP907GK WLAN USB Adapter. The connection between the router and the access point is labeled '54M'. The product image shows the SP907GK Wireless LAN USB Adapter, a white device with a USB interface (1) and a status display (2).

Internet

SP3361 ADSL2+ Modem Router

SP908GK CardBus Adapter

54M

SP906GK WLAN PCI Adapter

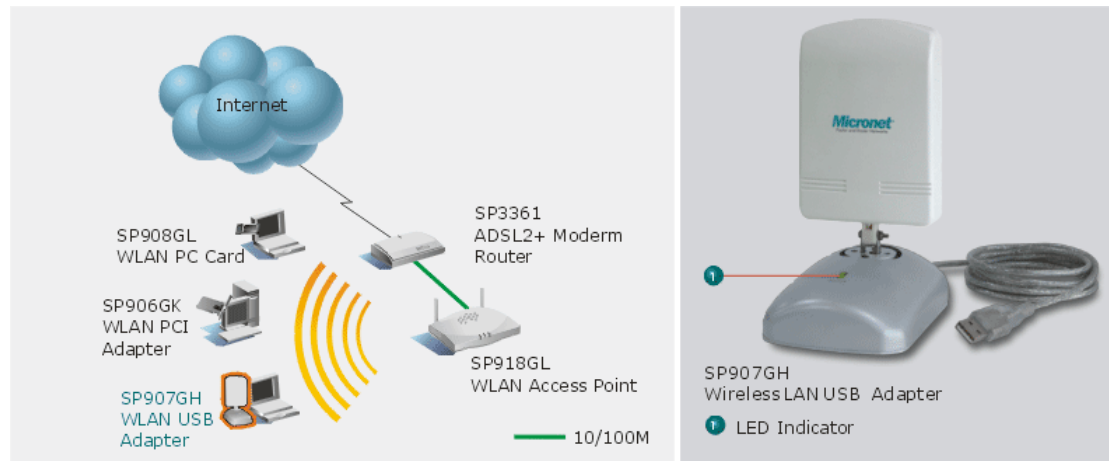
SP918GK WLAN Access Point

SP907GK WLAN USB Adapter

SP907GK Wireless LAN USB Adapter

- 1 USB Interface
- 2 Status Display

SP907GH



The diagram illustrates a network setup for the SP907GH. It shows an Internet cloud connected to an SP3361 ADSL2+ Modem Router. The router is connected to an SP918GL WLAN Access Point. A laptop is connected to the router via an SP908GL WLAN PC Card. Another laptop is connected to the router via an SP906GK WLAN PCI Adapter. A third laptop is connected to the access point via an SP907GH WLAN USB Adapter. The connection between the router and the access point is labeled '10/100M'. The product image shows the SP907GH Wireless LAN USB Adapter, a white device with an LED indicator (1) and a USB cable.

Internet

SP3361 ADSL2+ Modem Router

SP908GL WLAN PC Card

SP906GK WLAN PCI Adapter

SP907GH WLAN USB Adapter

SP918GL WLAN Access Point

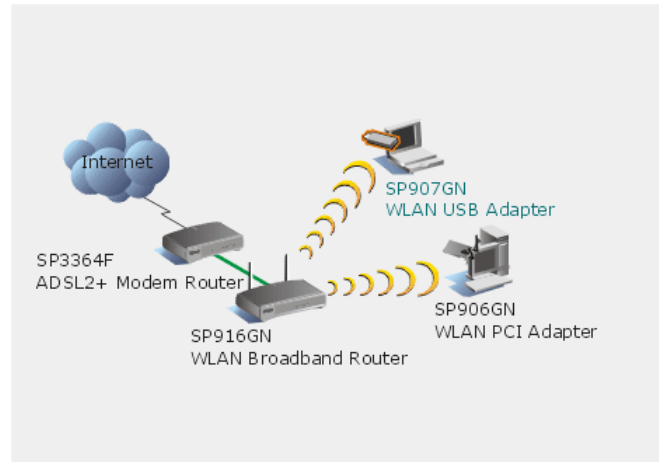
10/100M

SP907GH Wireless LAN USB Adapter

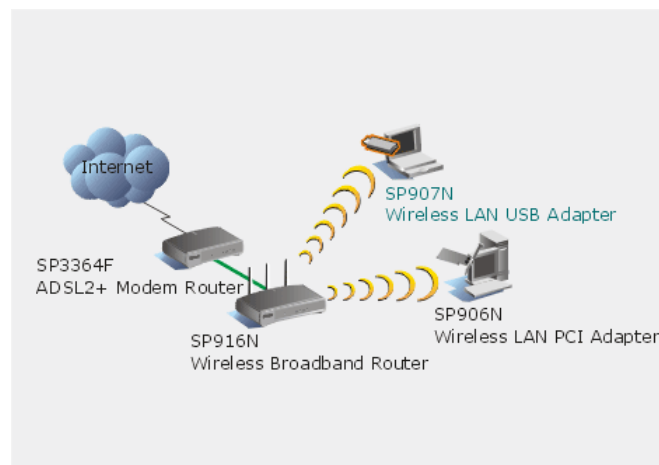
- 1 LED Indicator

WLAN Adapter

SP907GN

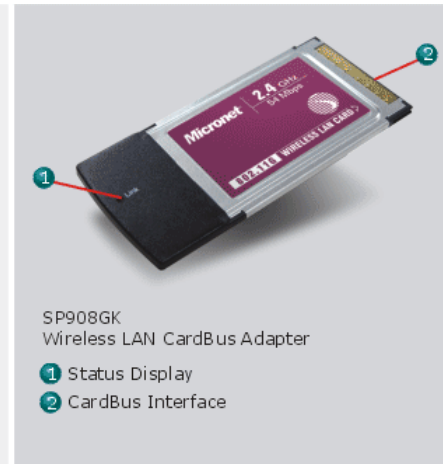
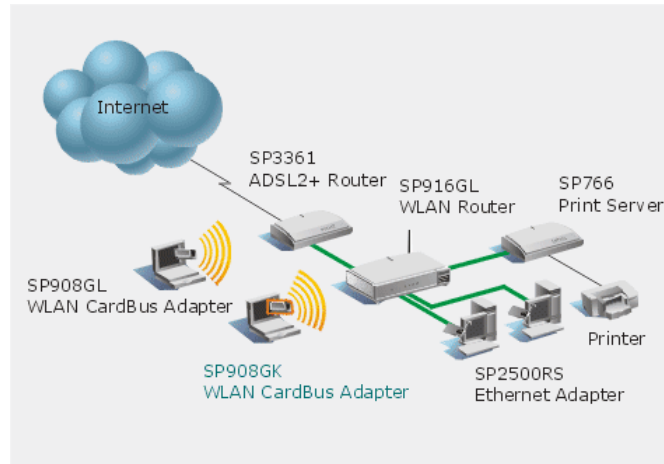


SP907N

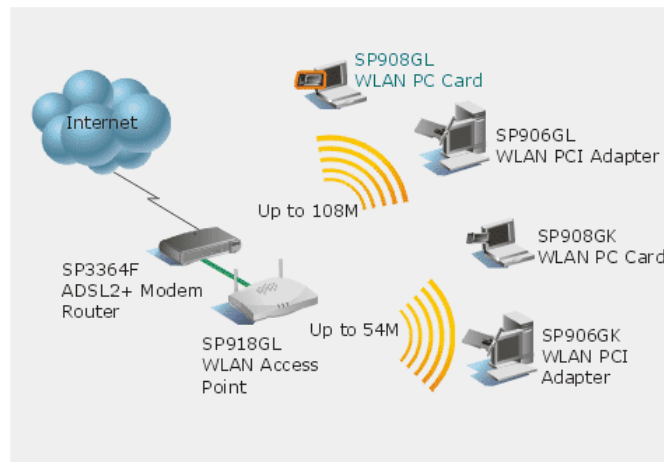


WLAN Adapter

SP908GK

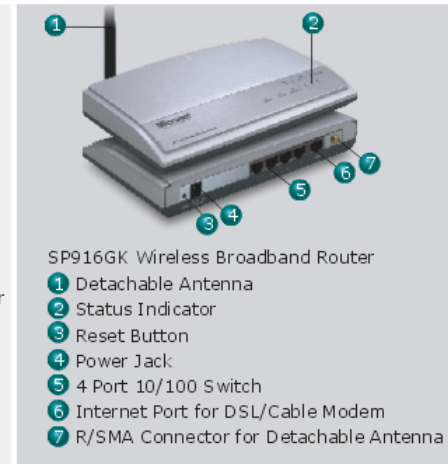
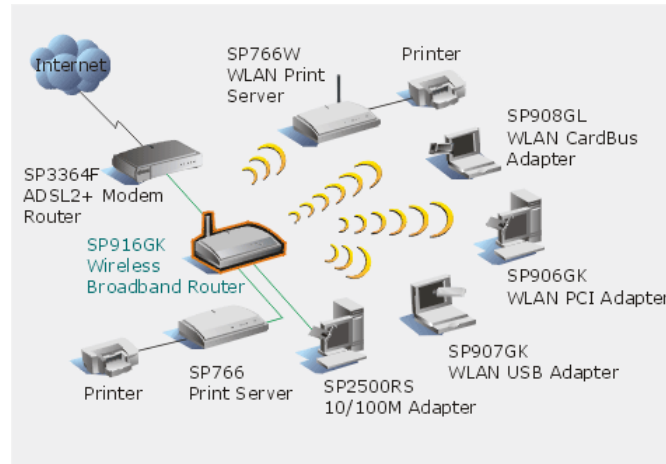


SP908GL

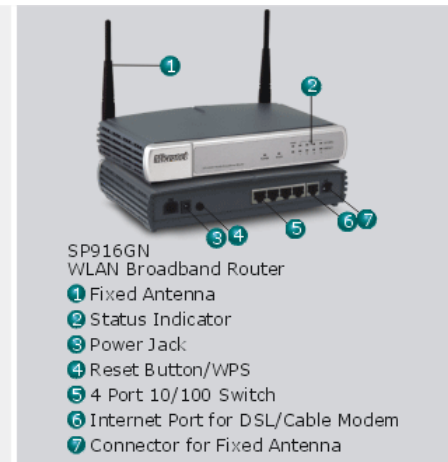
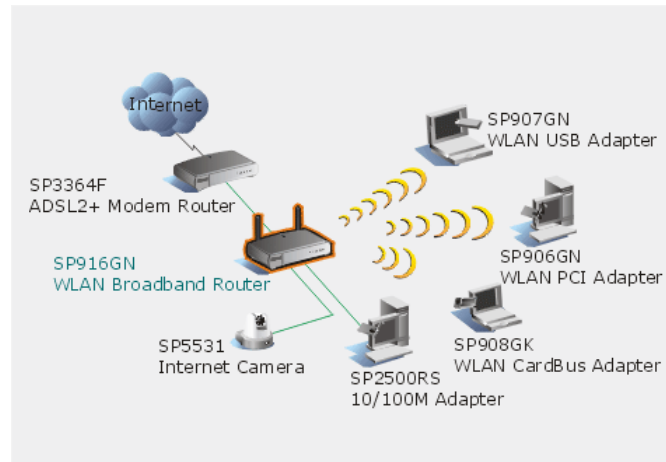


WLAN Router

SP916GK

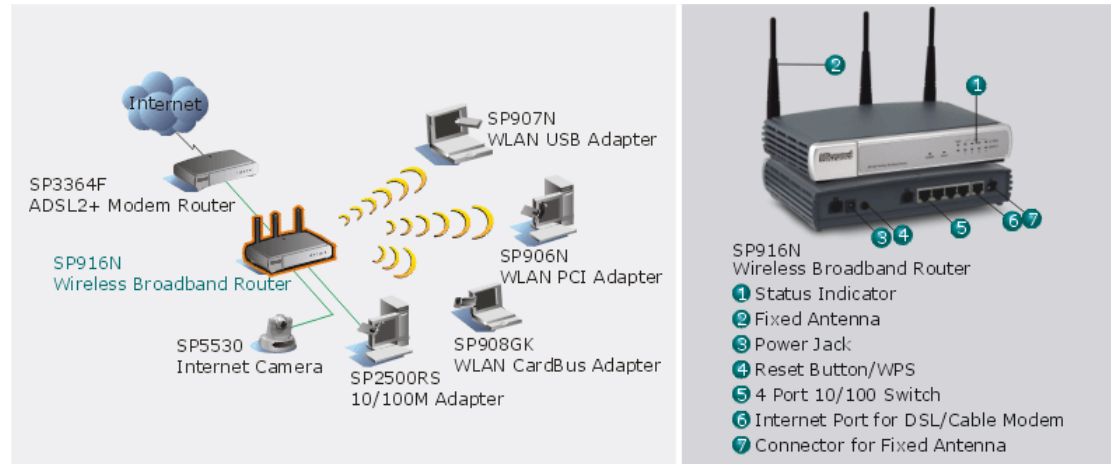


SP916GN



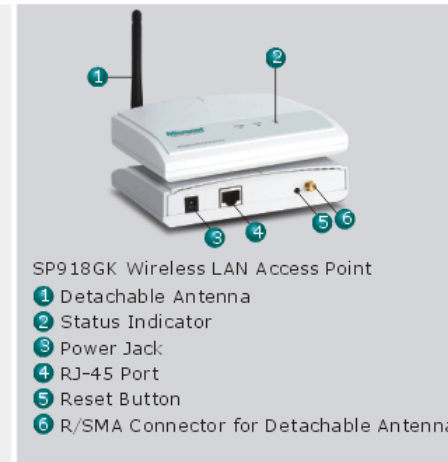
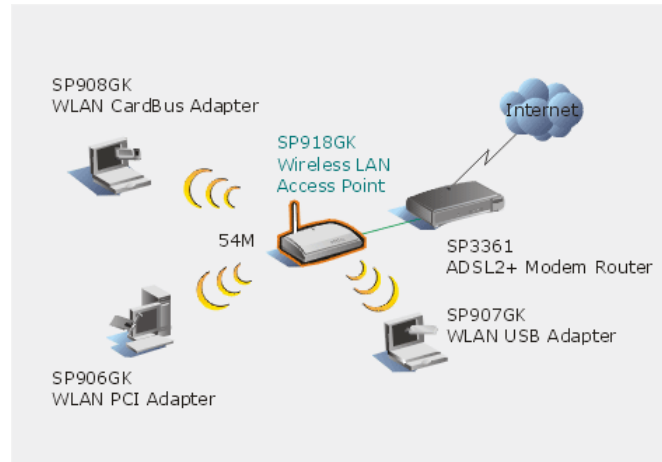
WLAN Router

SP916N

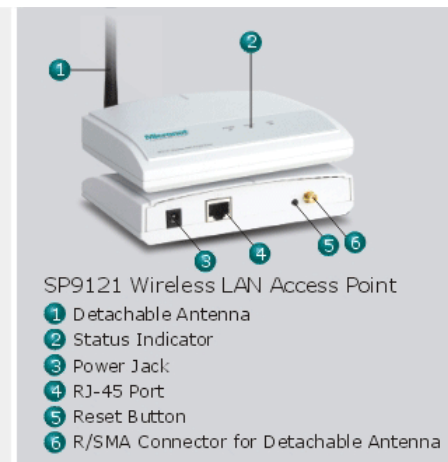
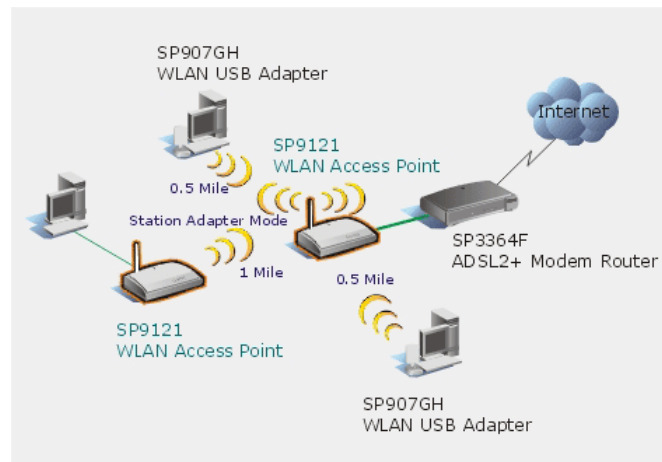


WLAN Access Point

SP918GK

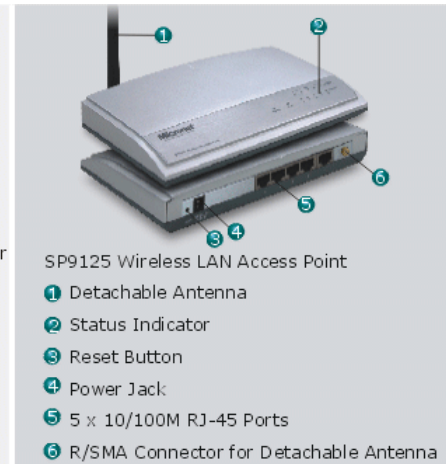
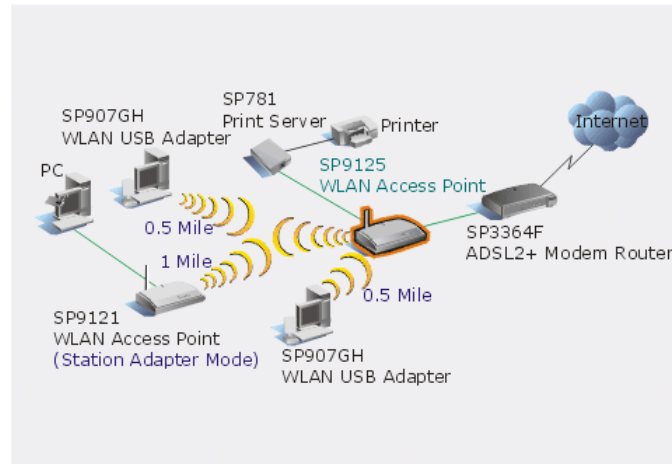


SP9121

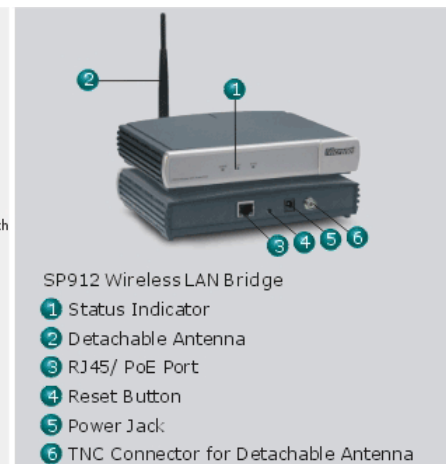
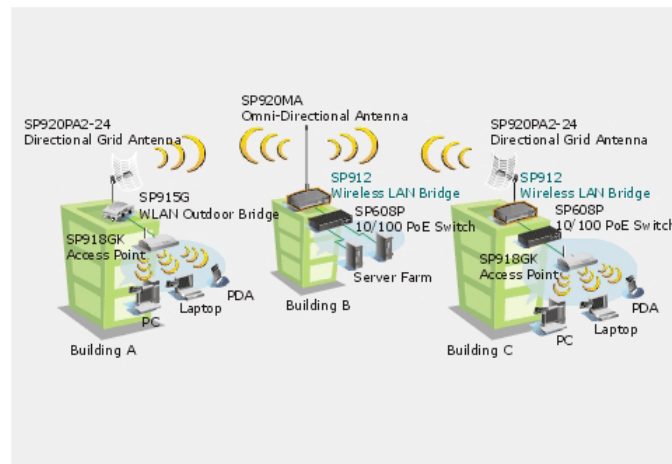


WLAN Access Point

SP9125

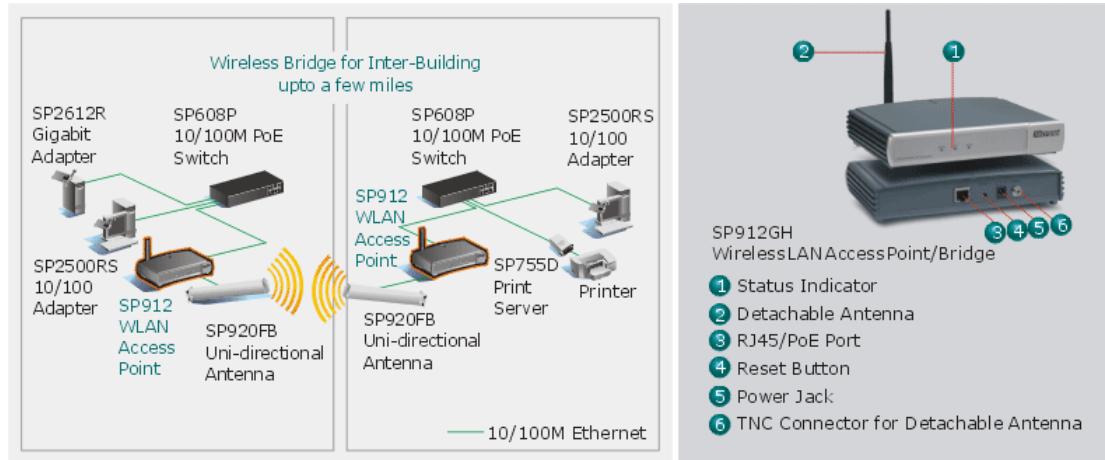


SP912



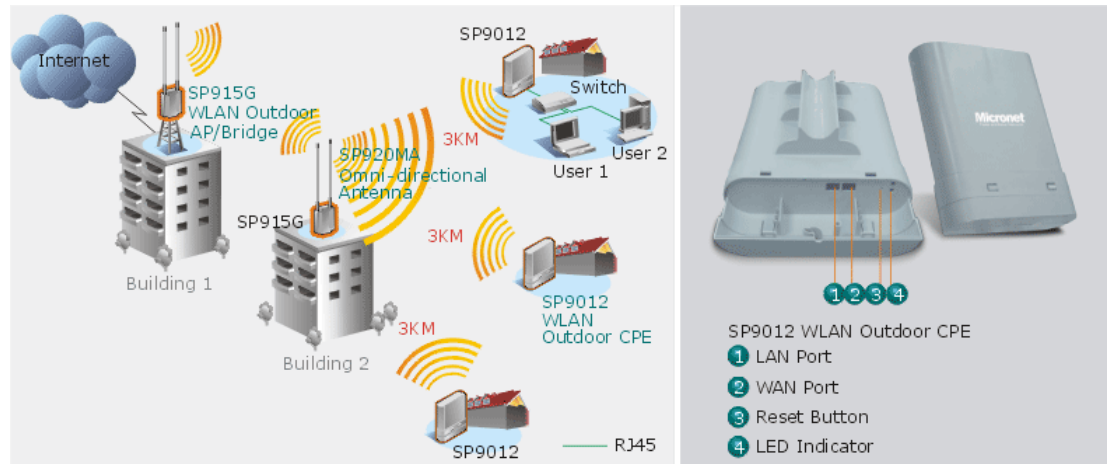
WLAN Access Point

SP912GH

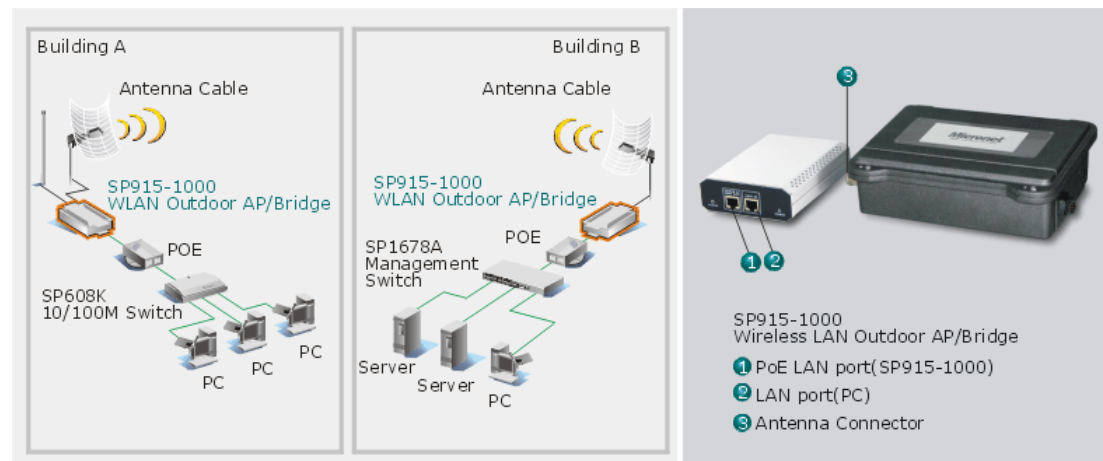


WLAN Outdoor AP/Bridge

SP9012

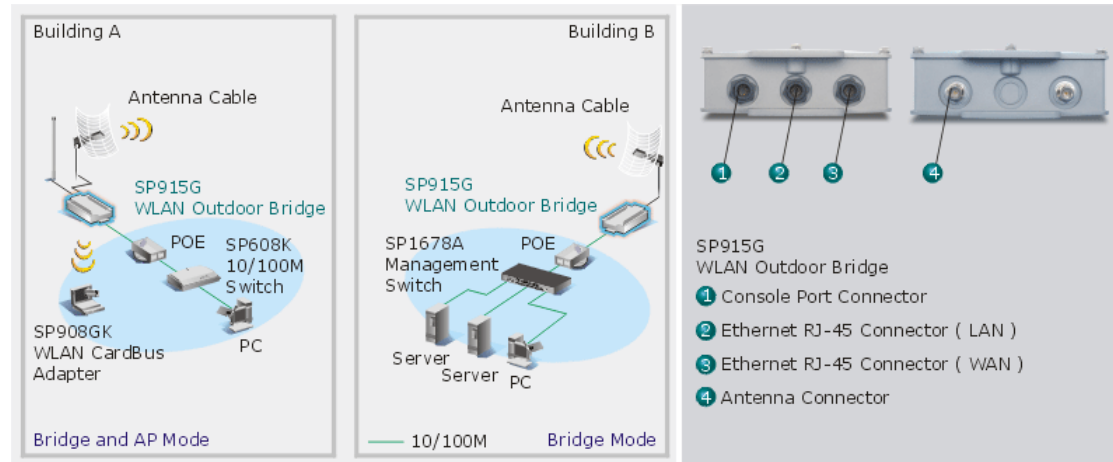


SP915-1000



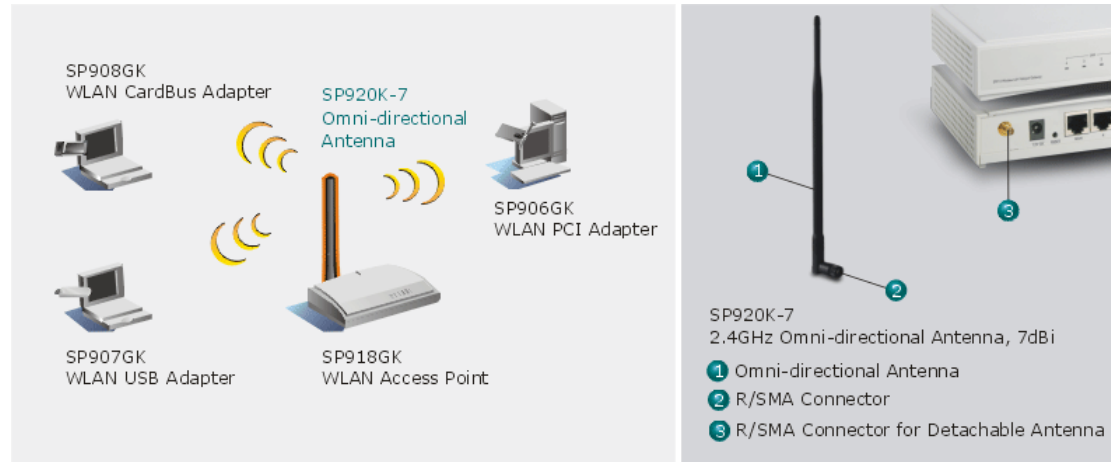
WLAN Outdoor AP/Bridge

SP915G

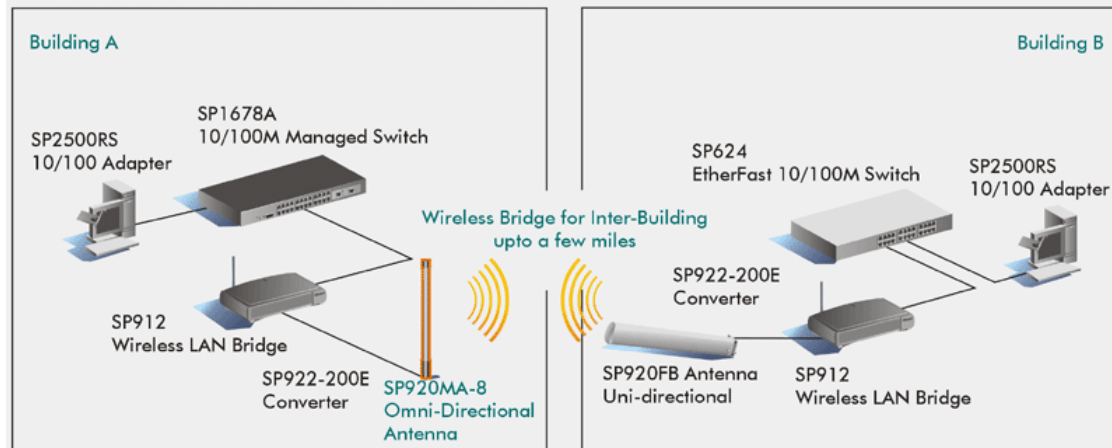


WLAN Antenna

SP920K-7

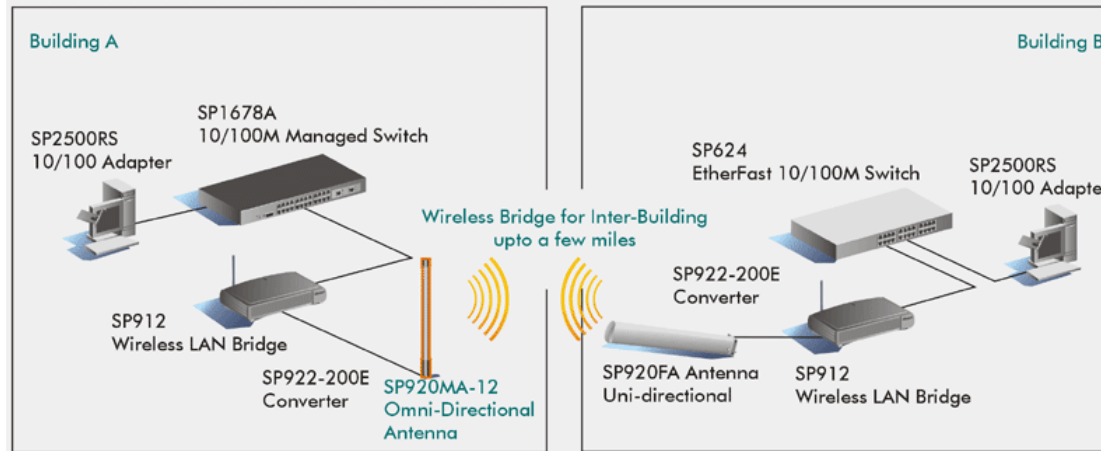


SP920MA-8

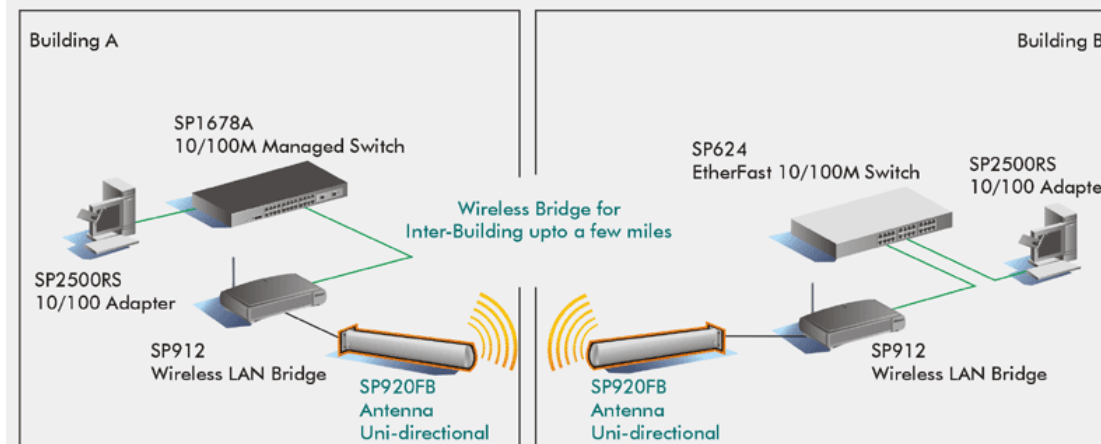


WLAN Antenna

SP920MA-12

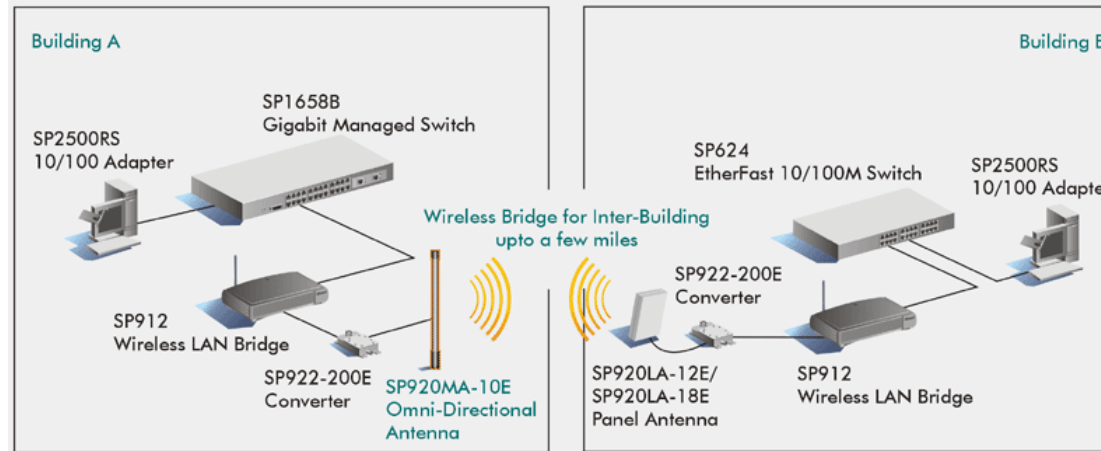


SP920FB

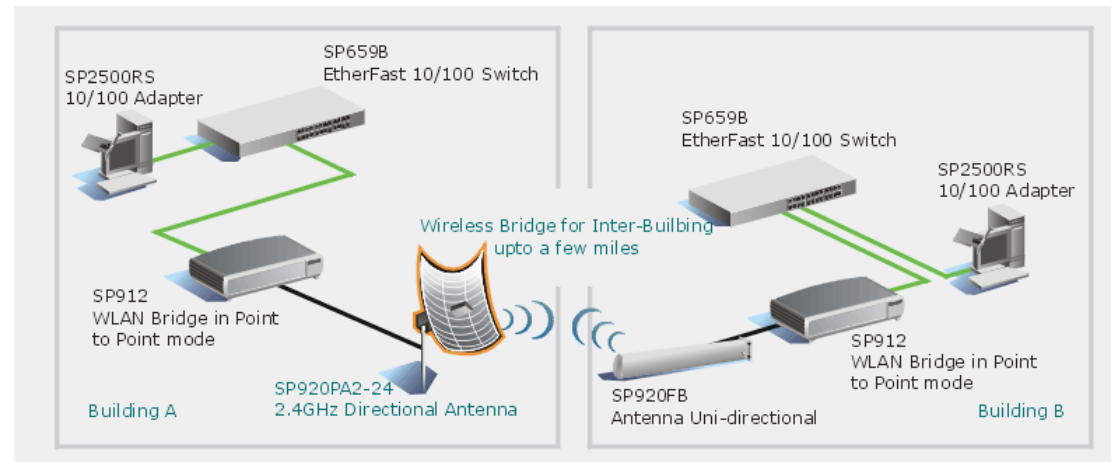


WLAN Antenna

SP920MA-10E

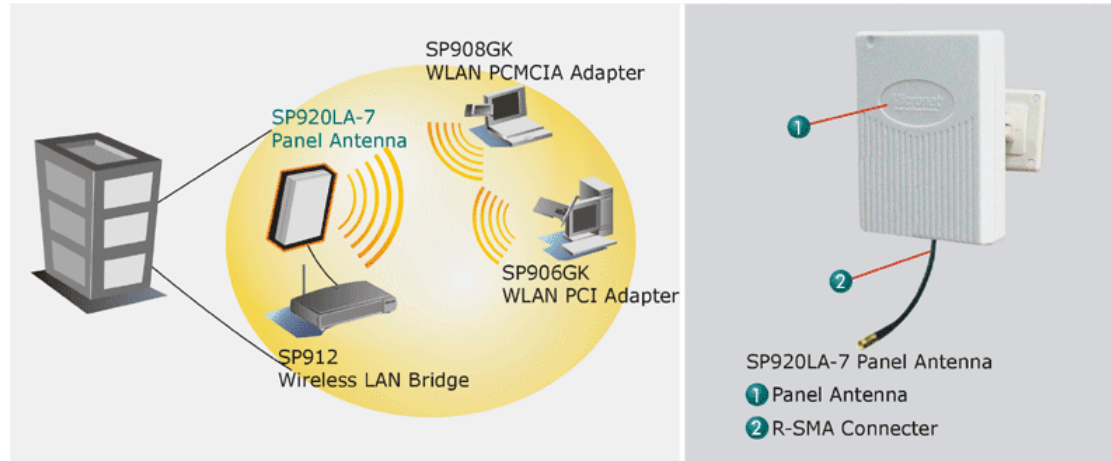


SP920PA2-24

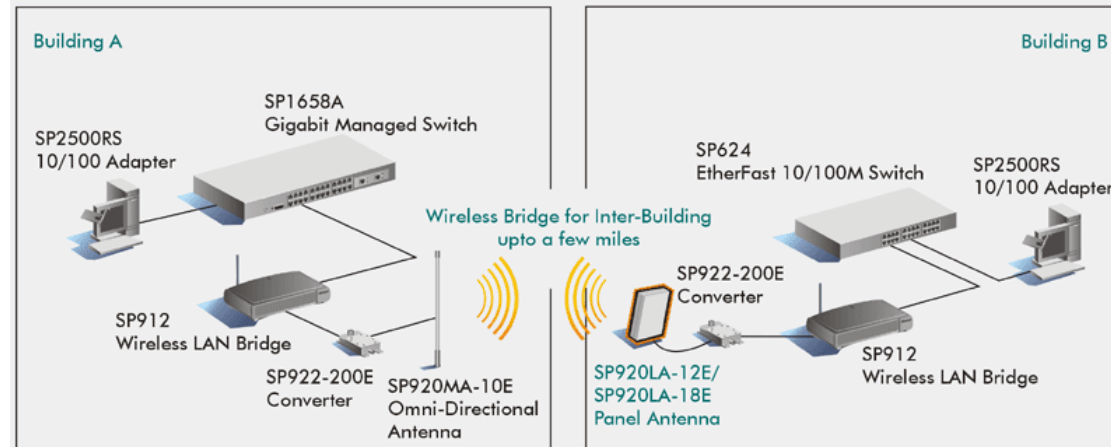


WLAN Antenna

SP920LA-7
SP920LA-12

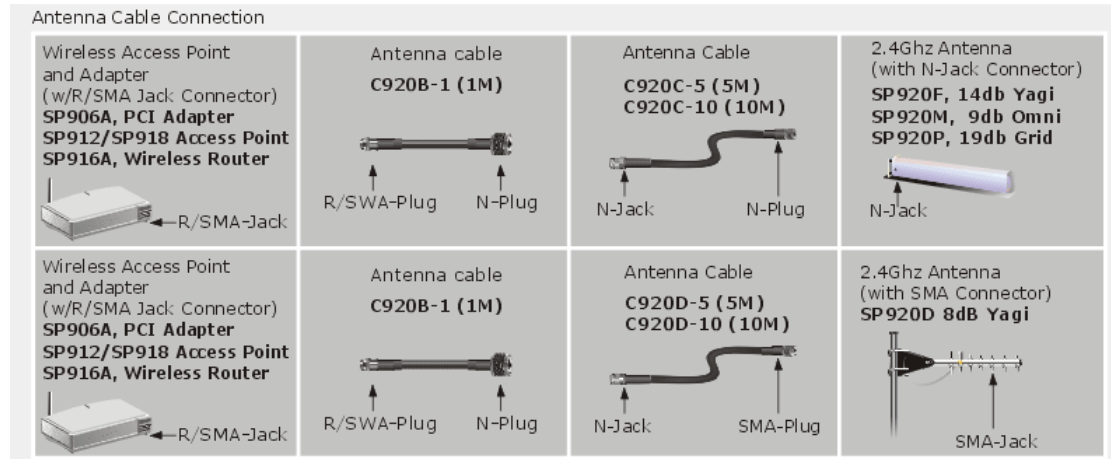


SP920LA-12E
SP920LA-18E

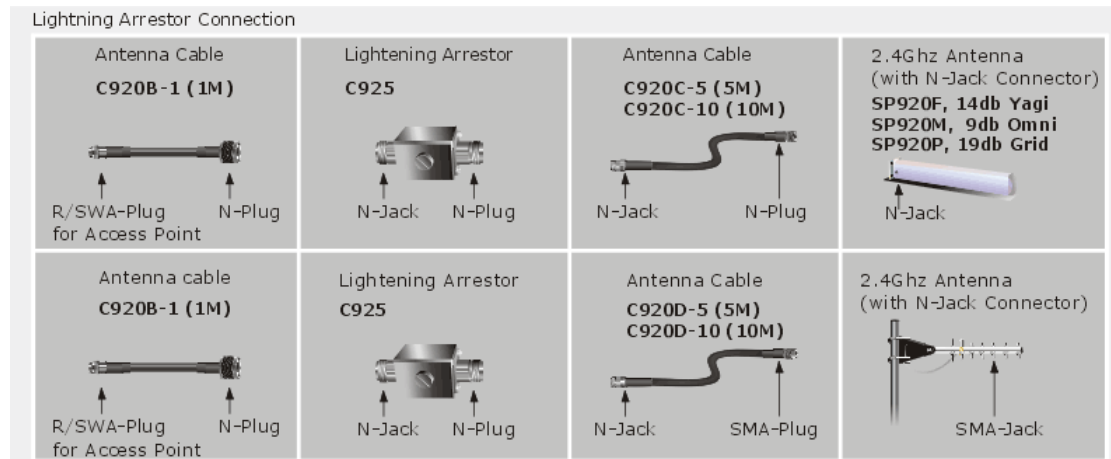


WLAN Accessories

- C920B-1
- C920B-3
- C920-5
- C920C-10
- C920D-5
- C920D-10
- C920G

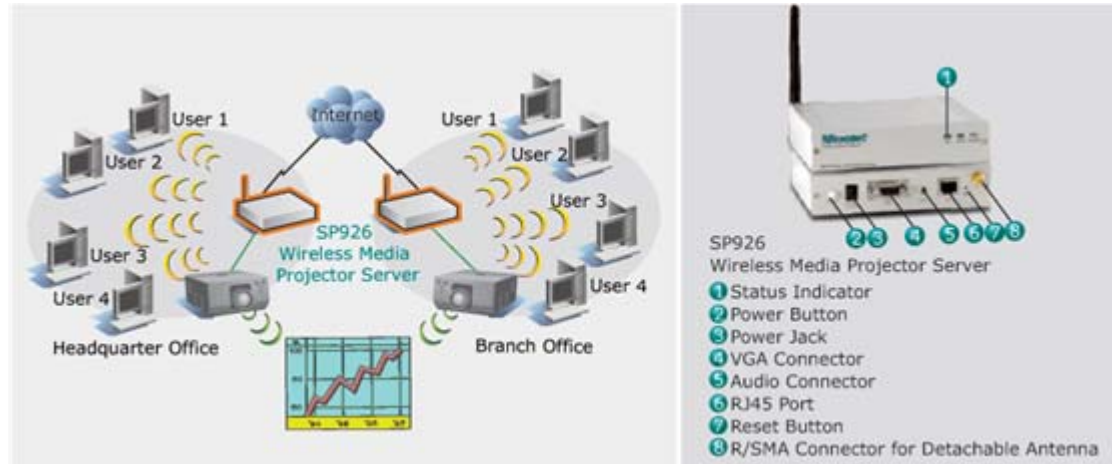


- C925



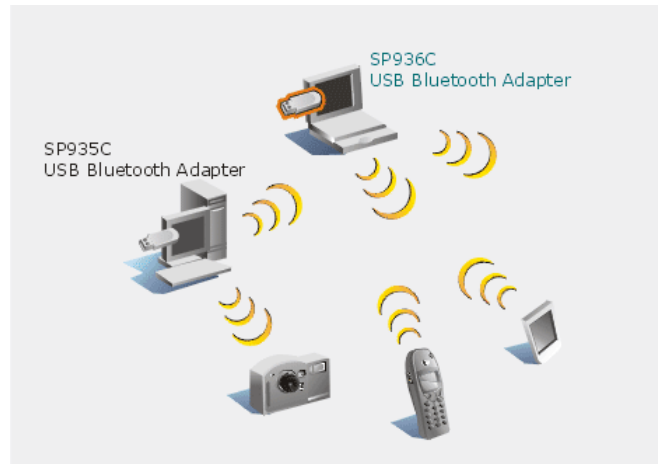
Wireless Projector Server

SP926

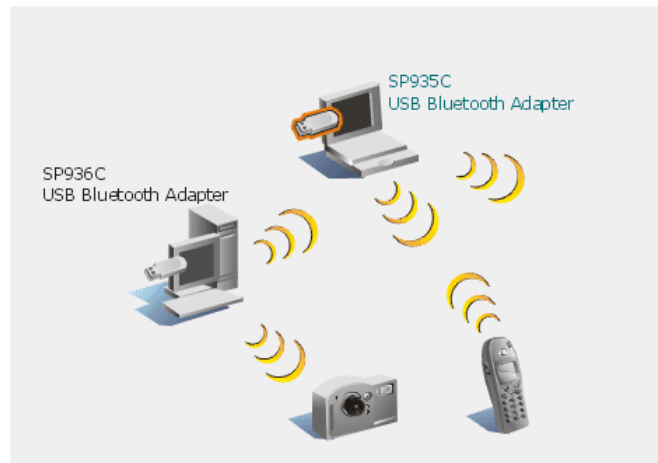


Bluetooth

SP935C

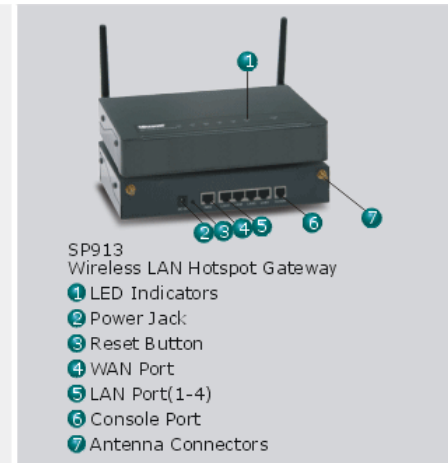
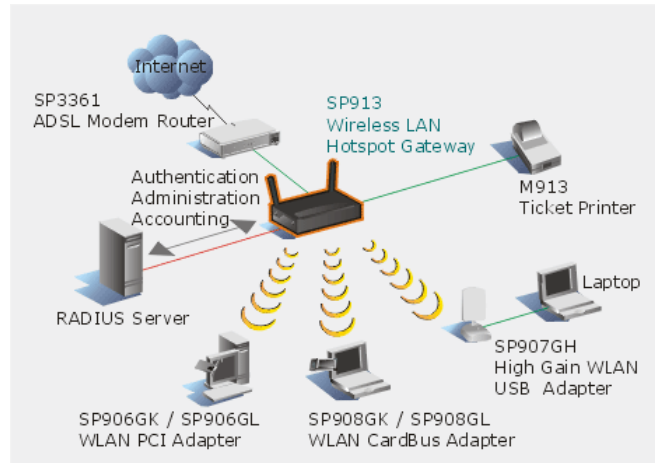


SP936C

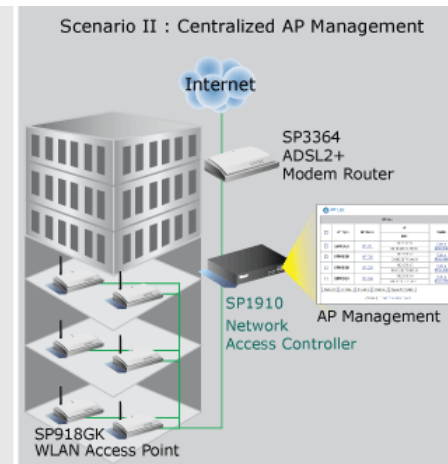
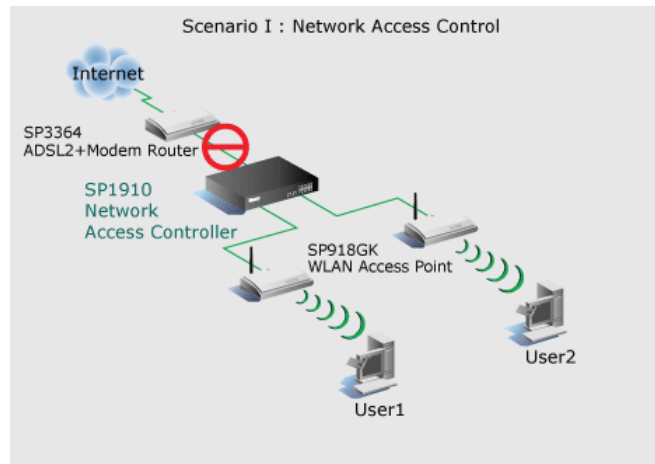


Hotspot & Network Access Controller

SP913

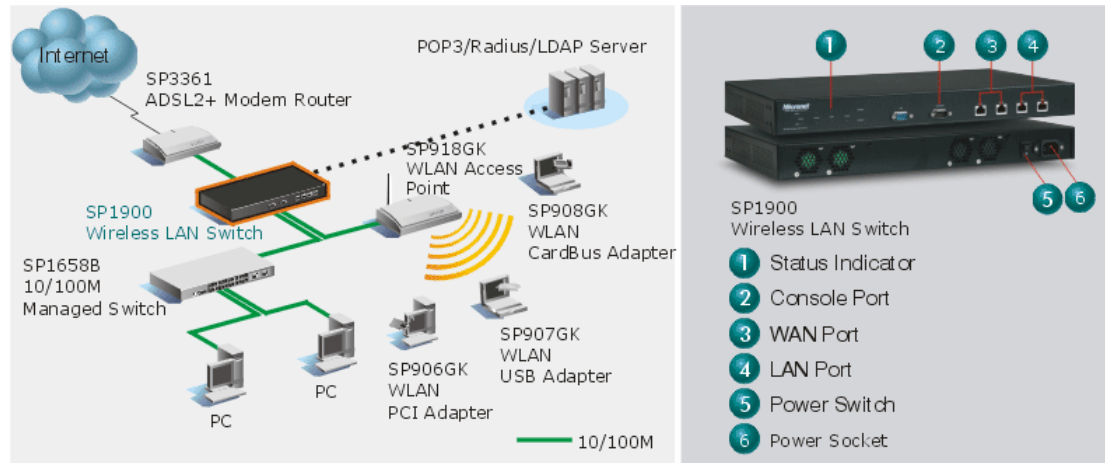


SP1910



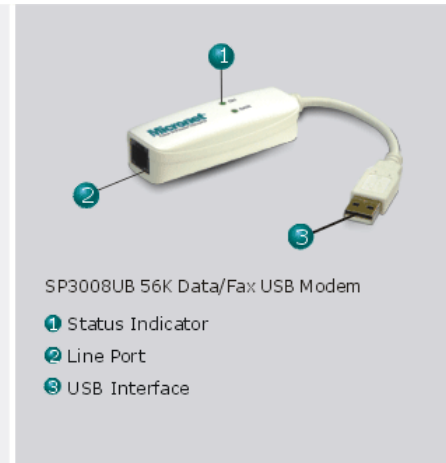
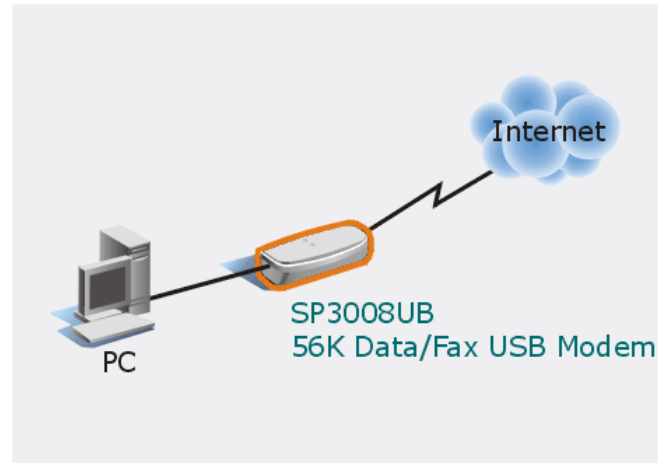
Hotspot & Network Access Controller

SP1900

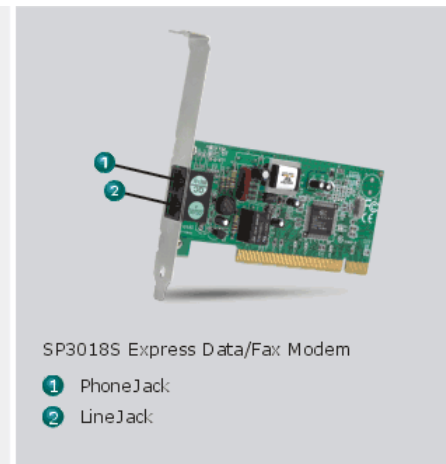
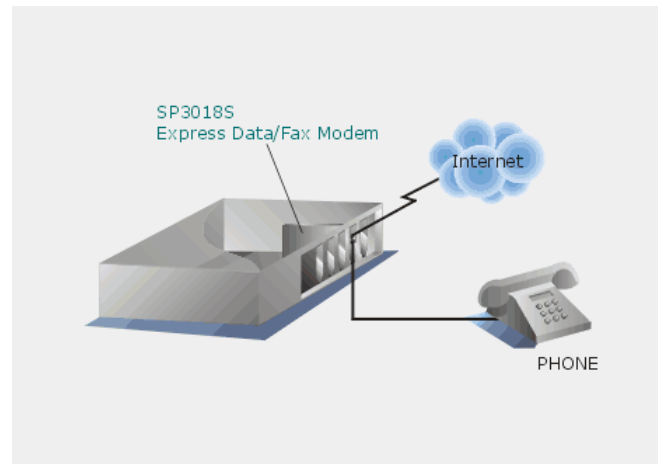


56K Modem

SP3008UB

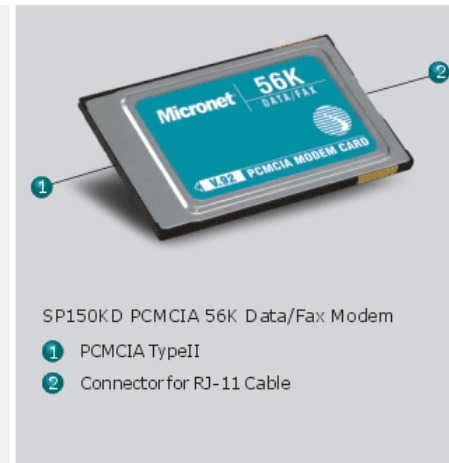
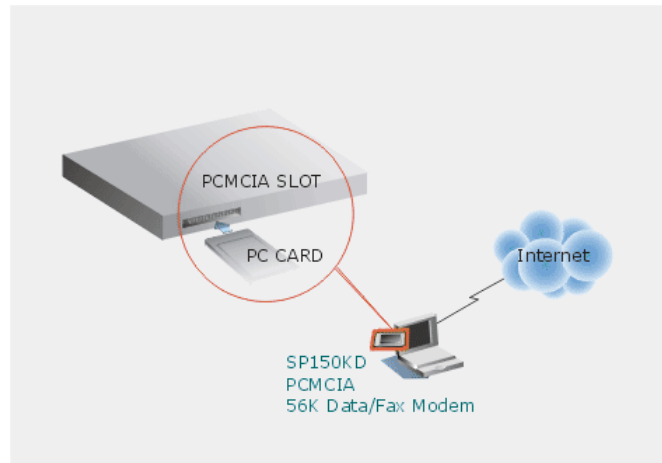


SP3018S

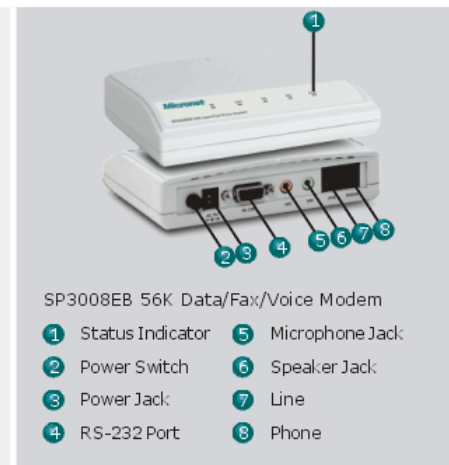
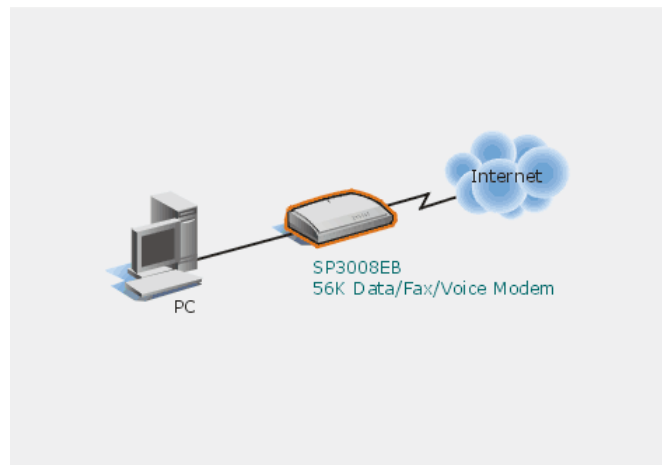


56K Modem

SP150KD

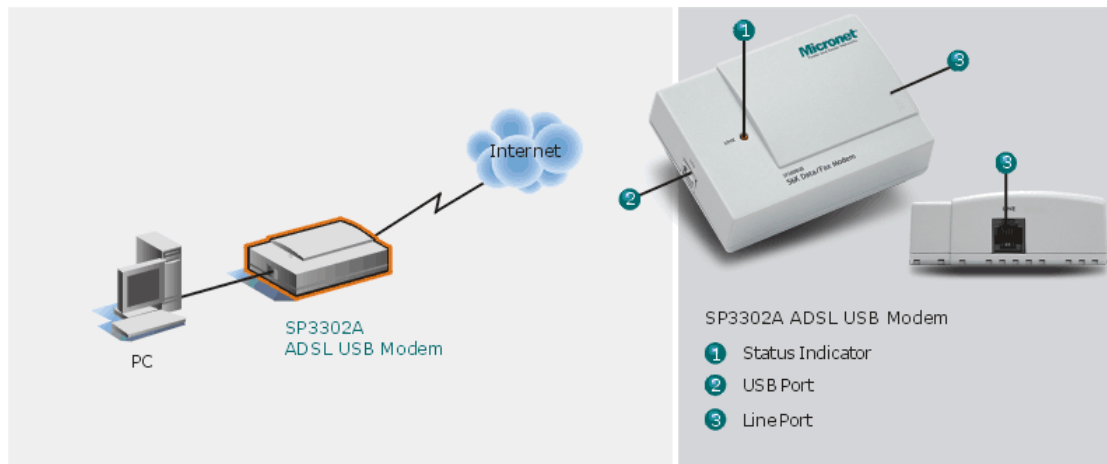


SP3008EB

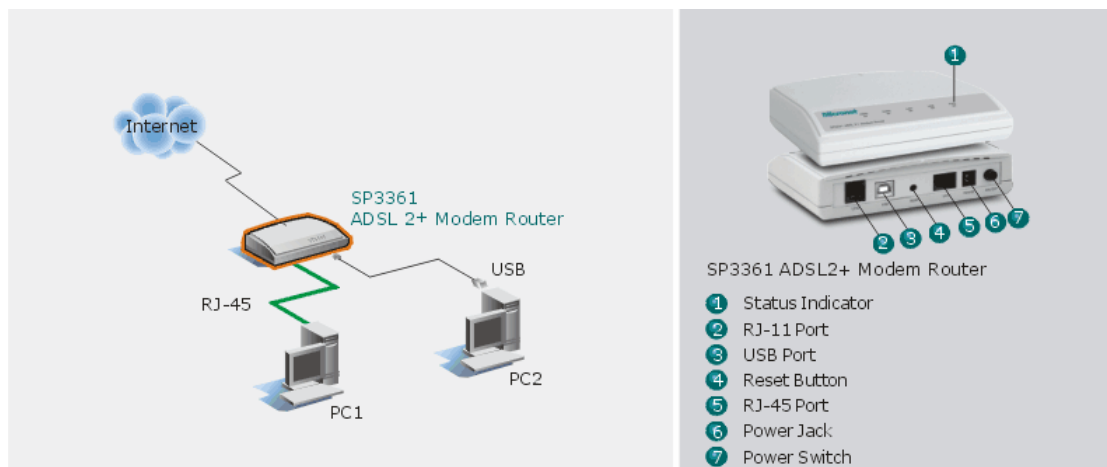


ADSL

SP3302A

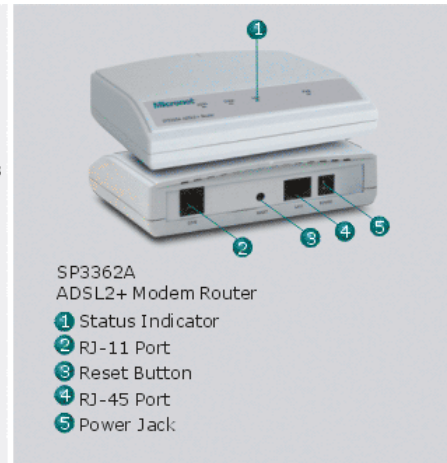
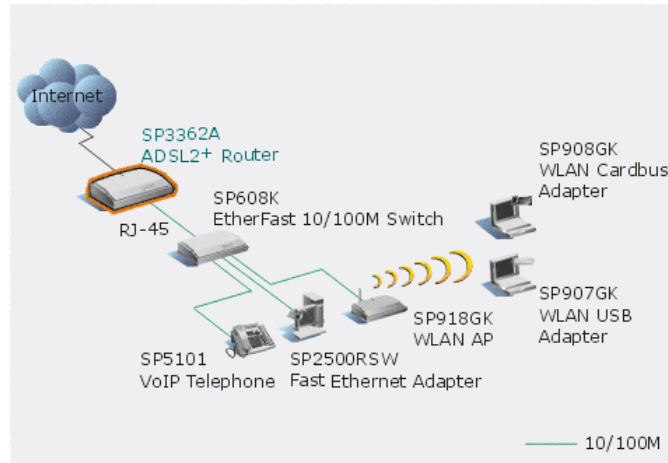


SP3361

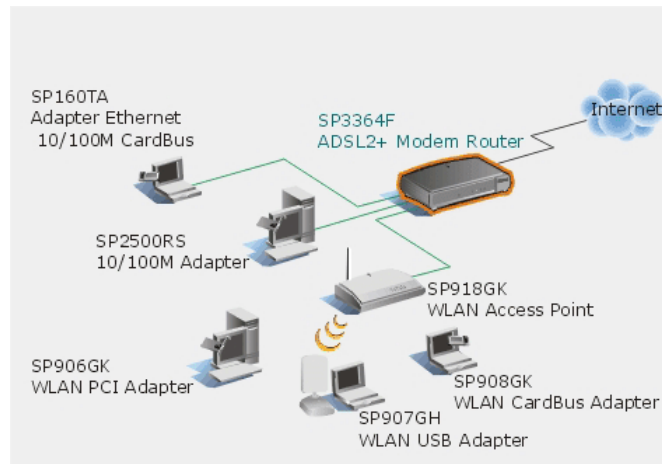


ADSL

SP3362A

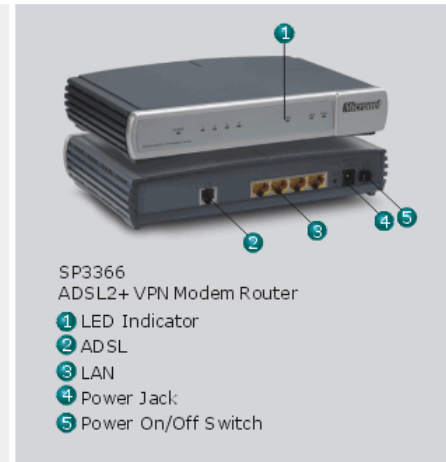
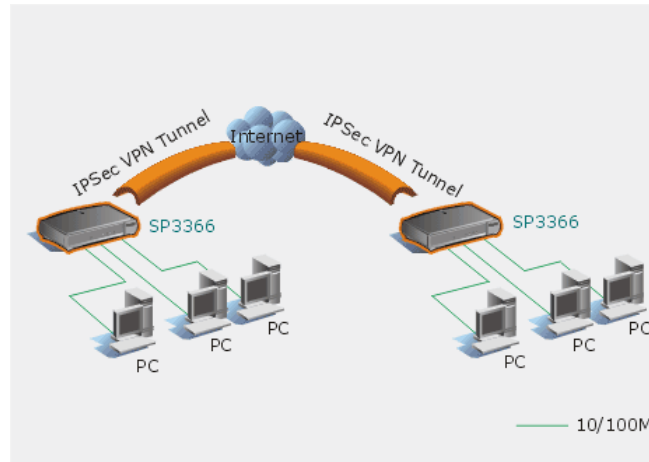


SP3364F

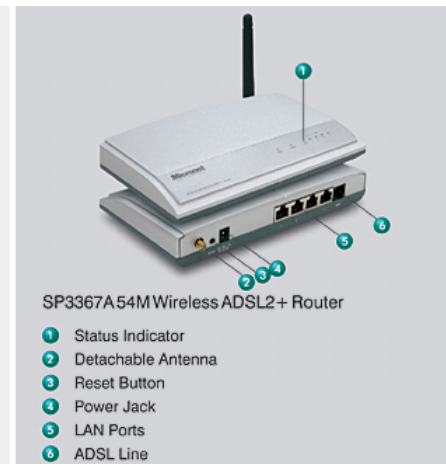
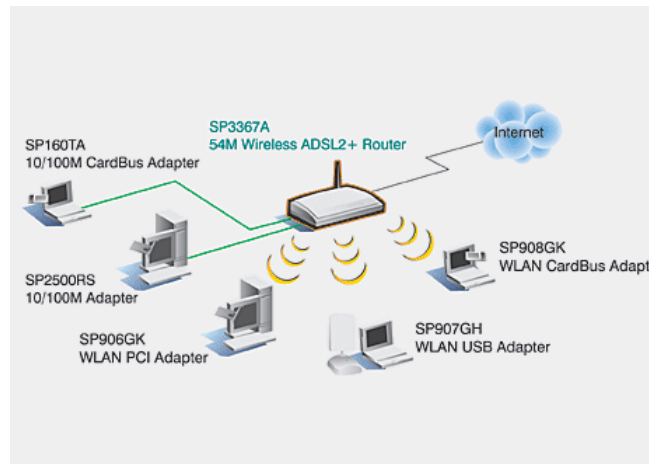


ADSL

SP3366

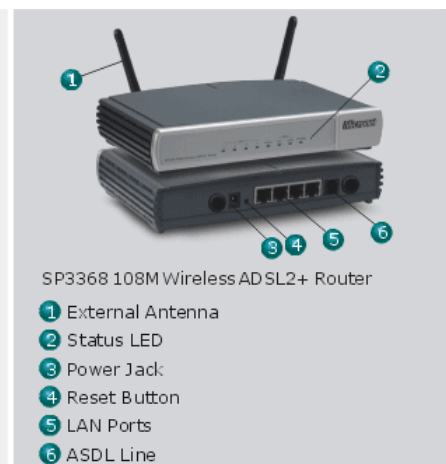
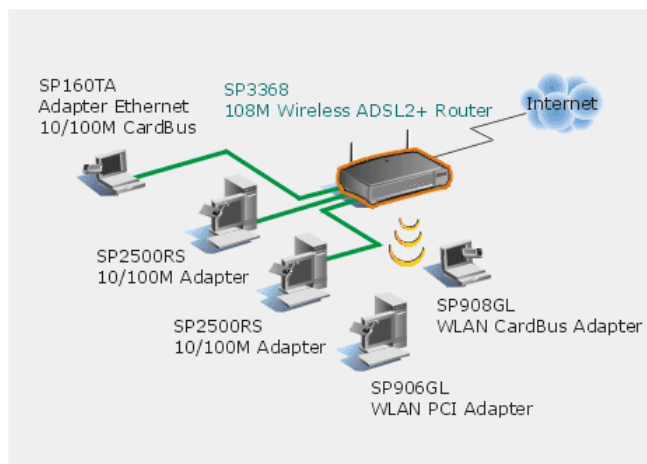


SP3367A

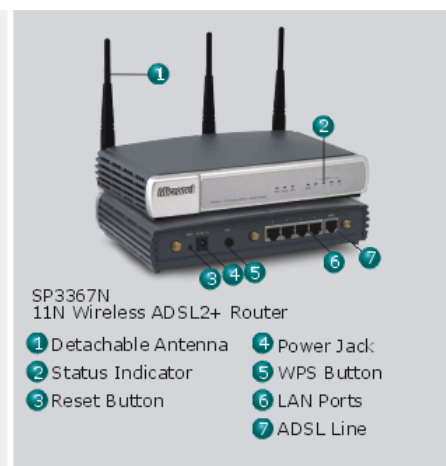
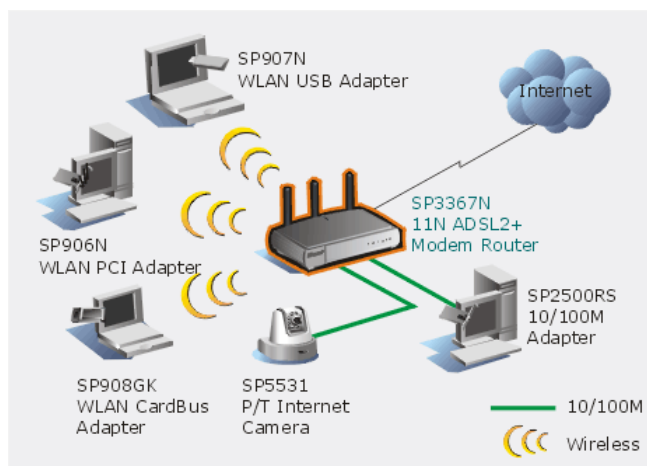


ADSL

SP3368

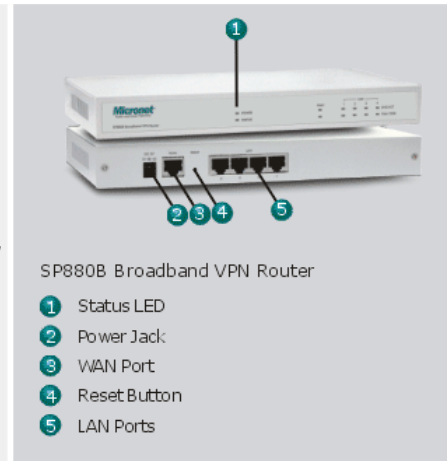
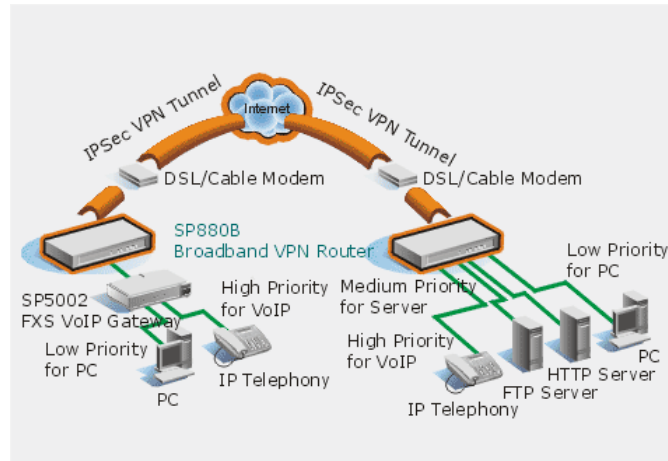


SP3367N

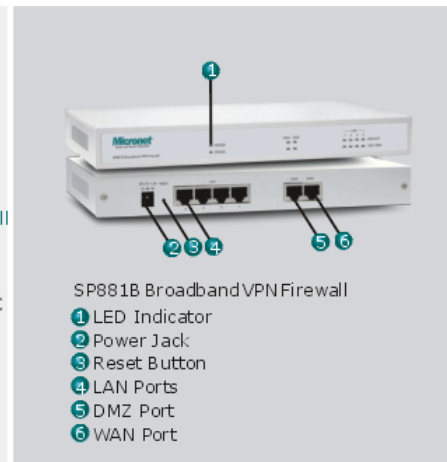
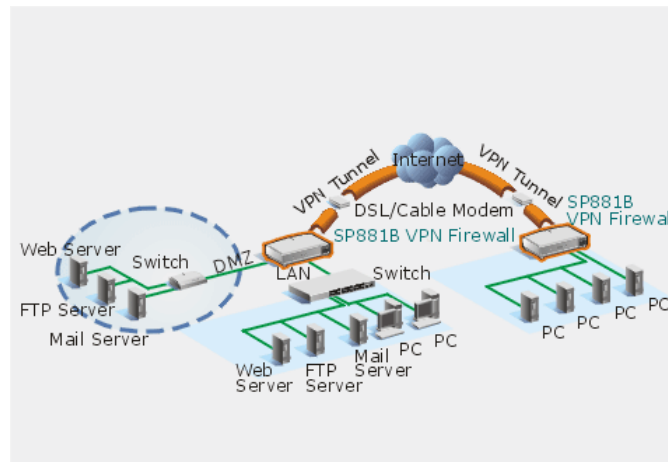


Broadband Router

SP880B

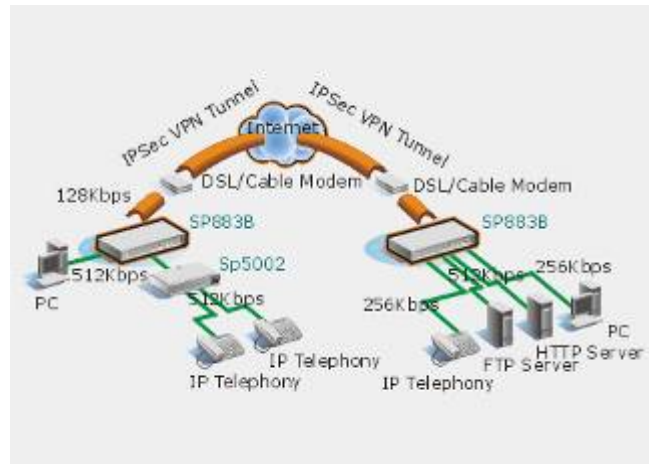


SP881B

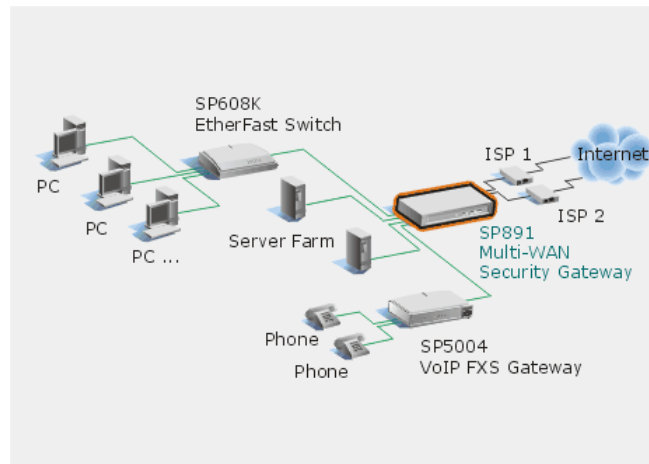


Broadband Router

SP883B

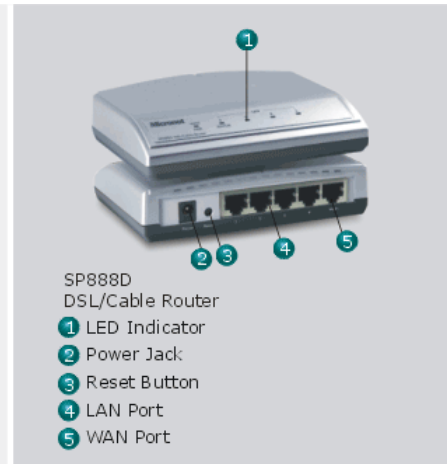
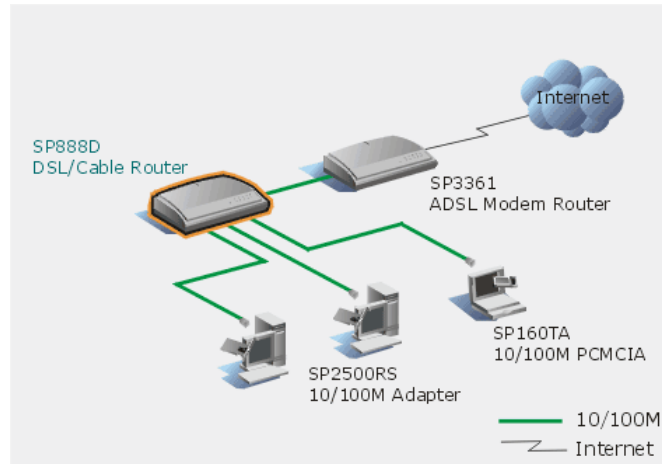


SP891

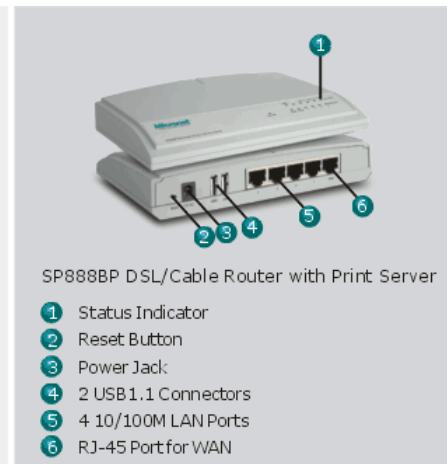
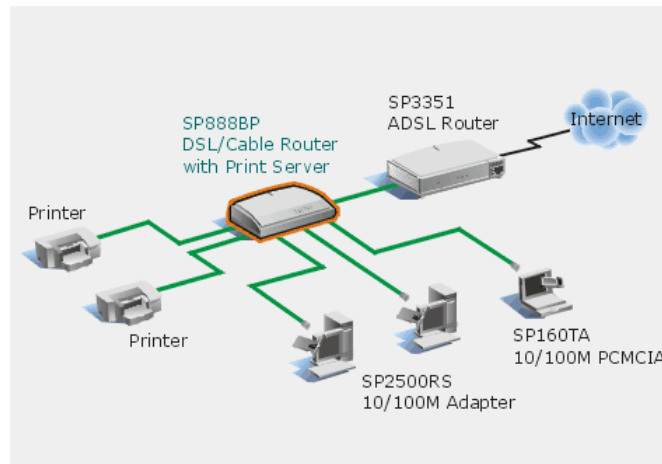


Broadband Router

SP888D

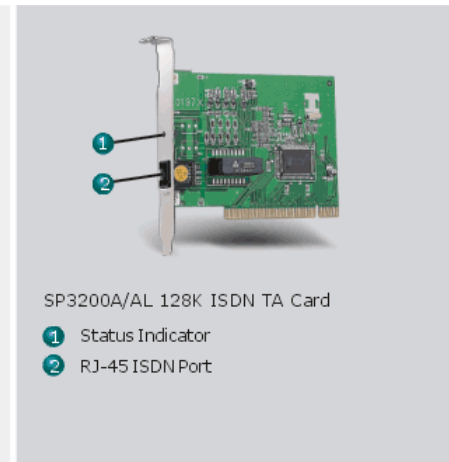
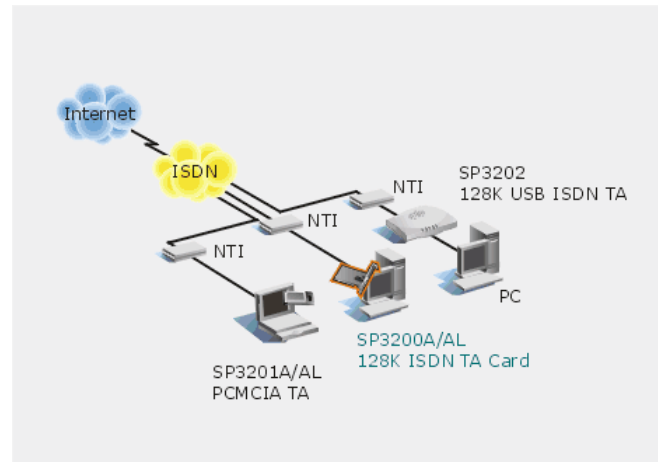


SP888BP



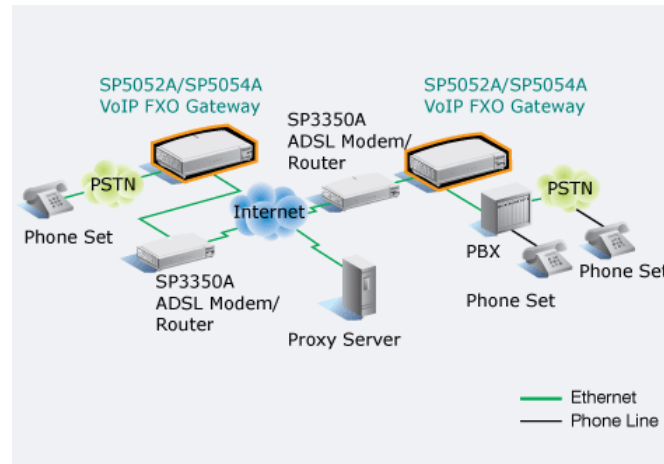
ISDN

SP3200A
SP3200AL

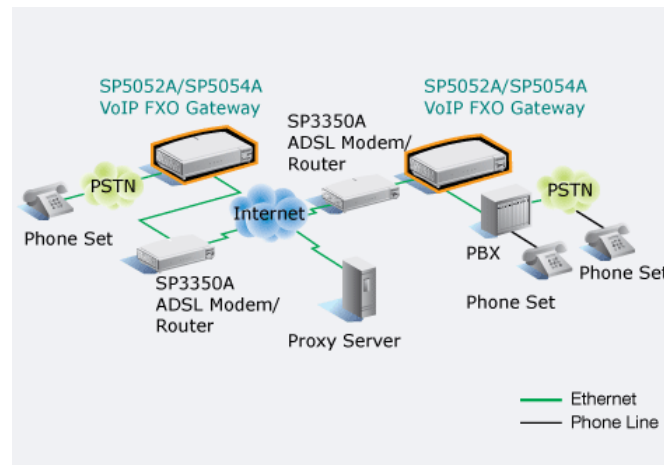


Analog Gateway, FXO

SP5052A/S

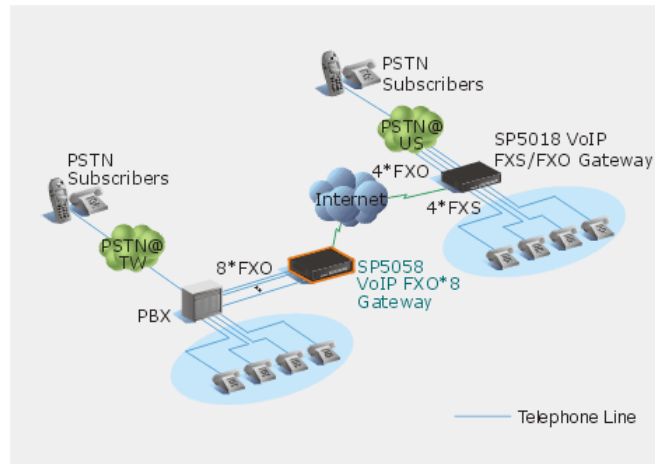


SP5054A/S



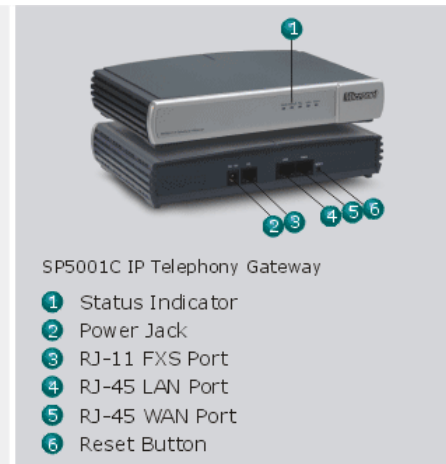
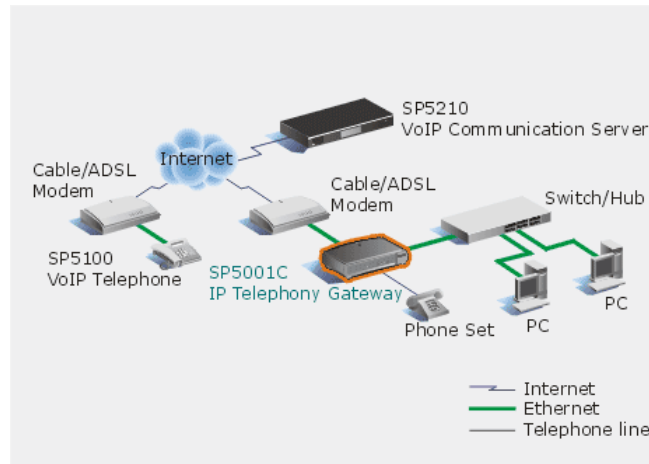
Analog Gateway, FXO

SP5058

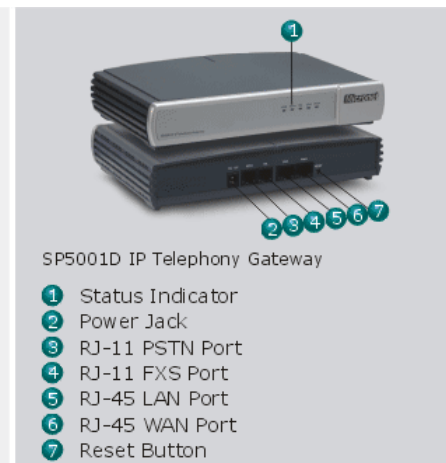
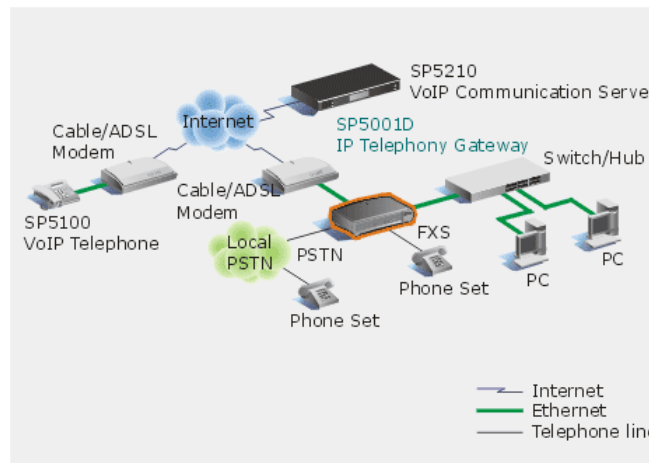


Analog Gateway, FXS

SP5001C/S

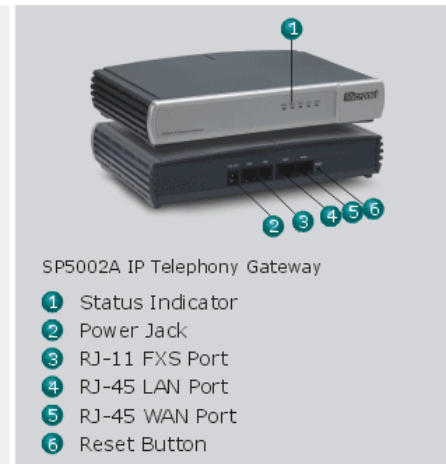
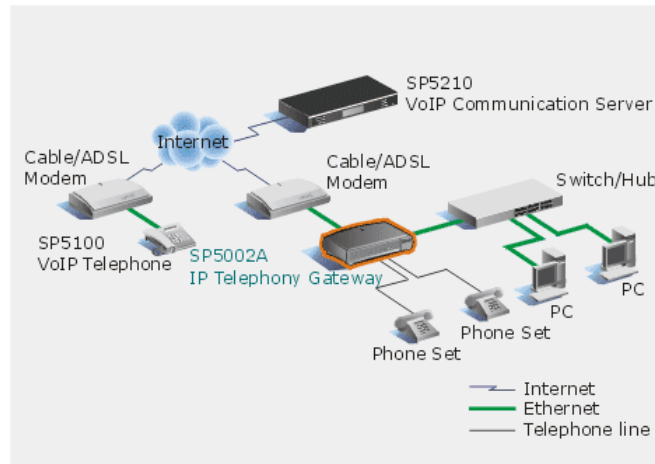


SP5001D/S

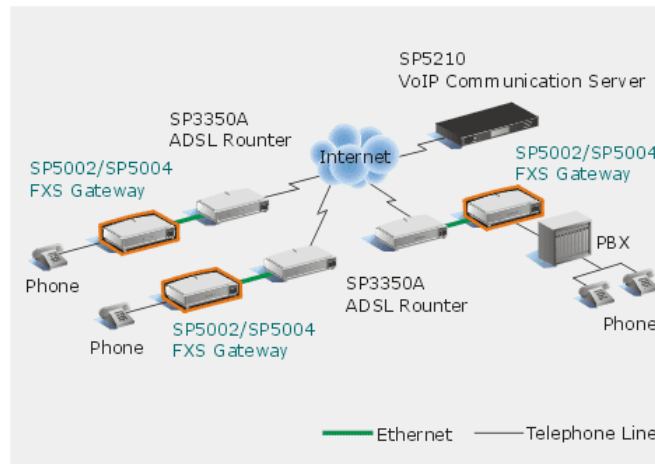


Analog Gateway, FXS

SP5002A/S

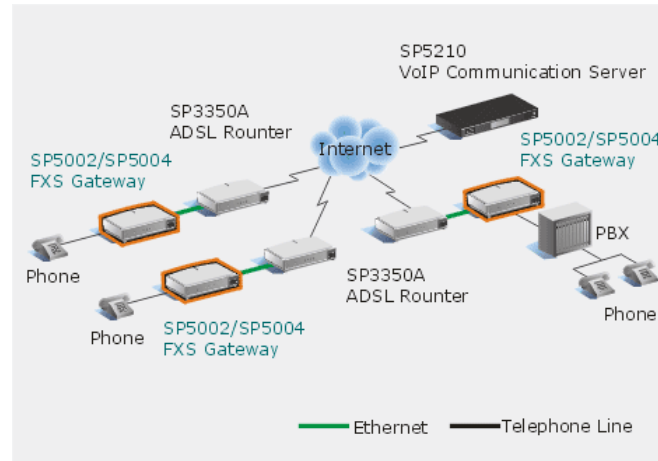


SP5002/S



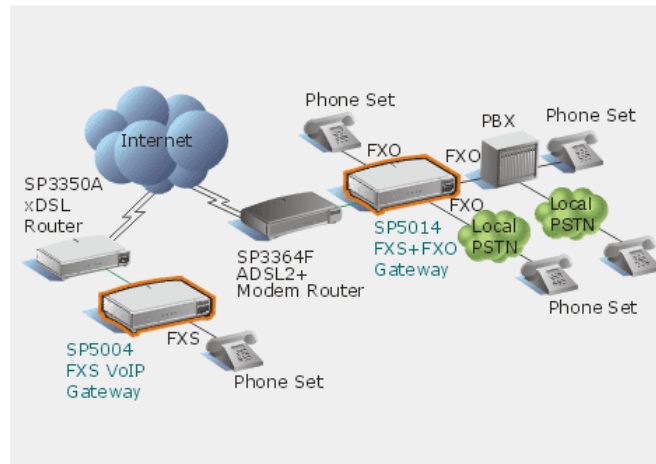
Analog Gateway, FXS

SP5004/S

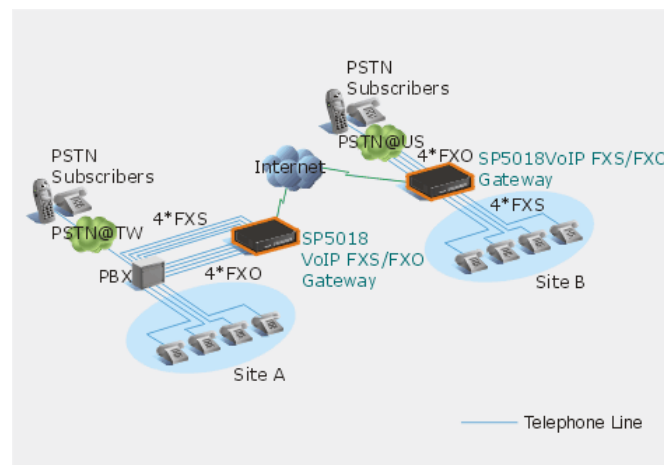


Analog Gateway, FXS / FXO

SP5014
SP5014S

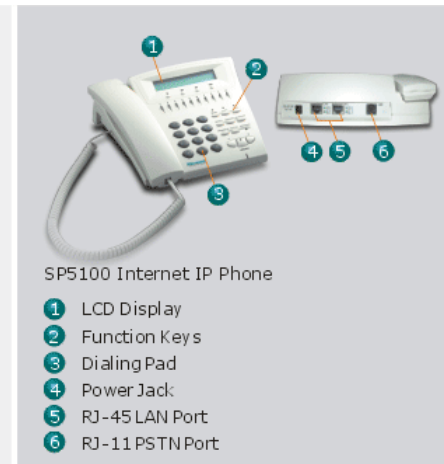
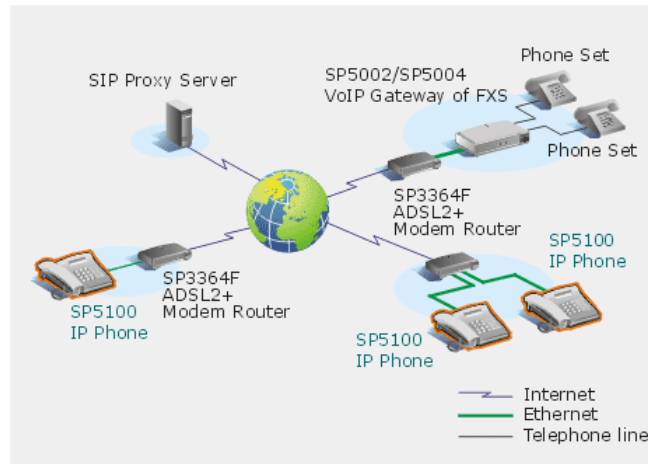


SP5018

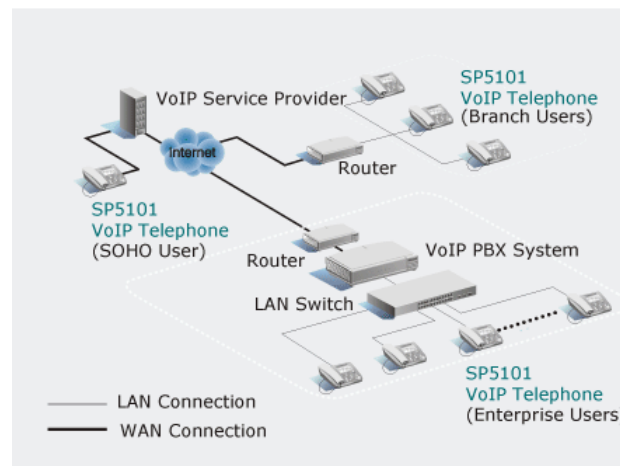


IP Phone

SP5100 SP5100S

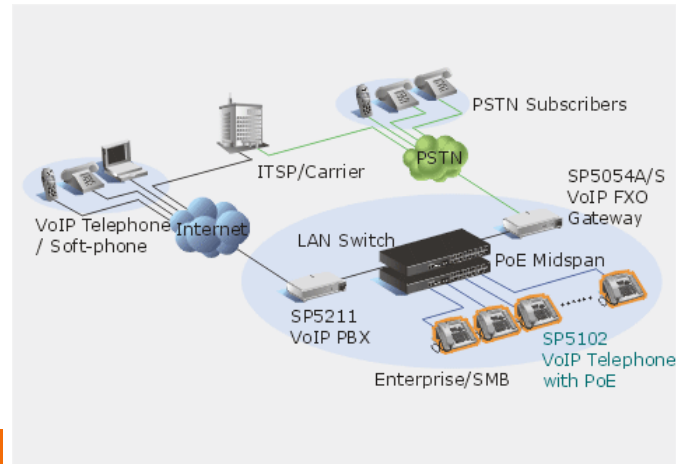


SP5101



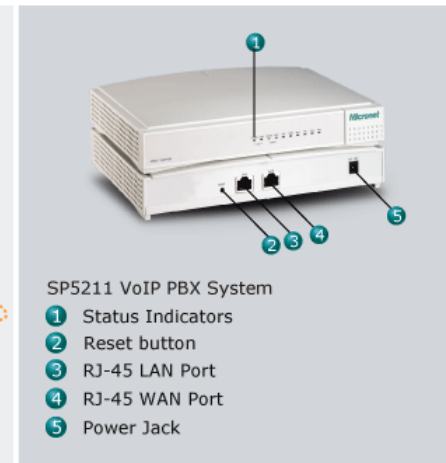
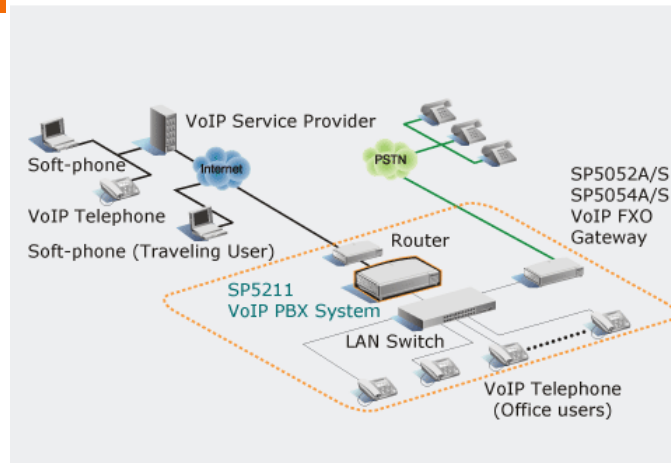
IP Phone

SP5102



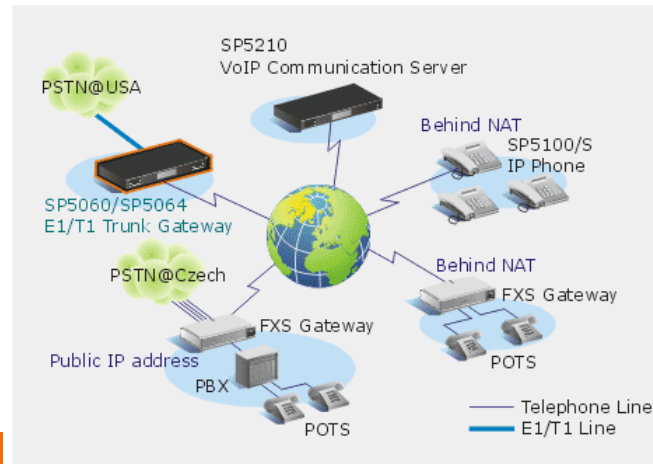
IP PBX

SP5211



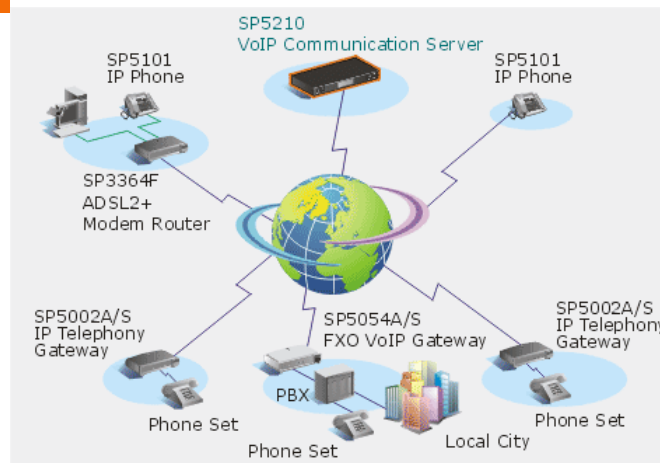
Digital Gateway

SP5060
SP5064



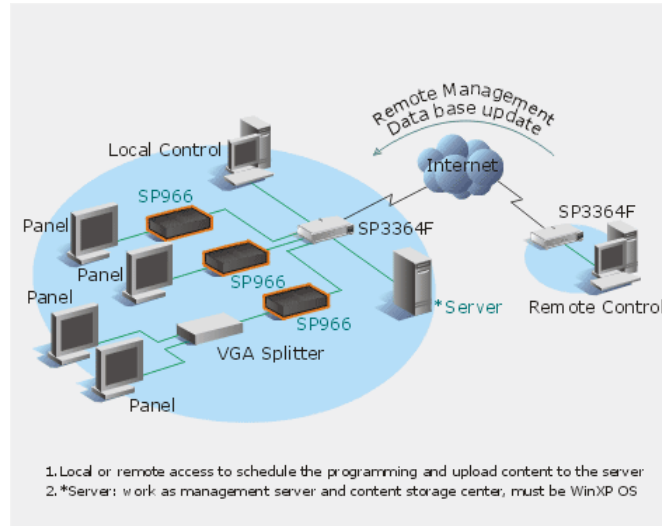
SIP Proxy Server

SP5210
SP5210-200
SP5210-500
SP5210K



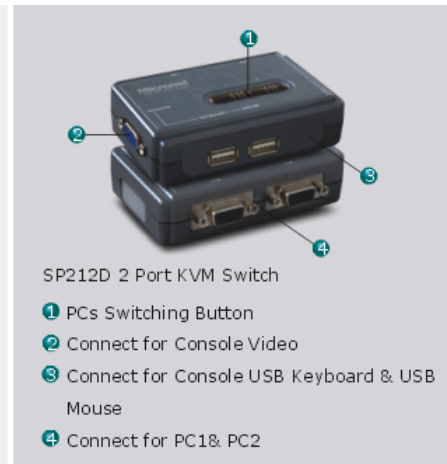
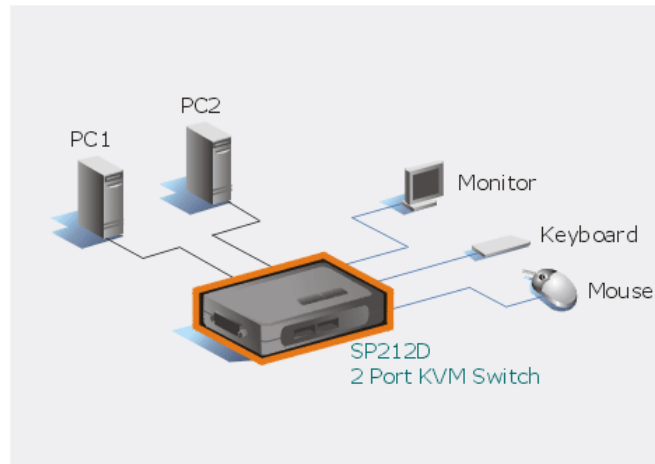
Digital Signage Network Player

SP966

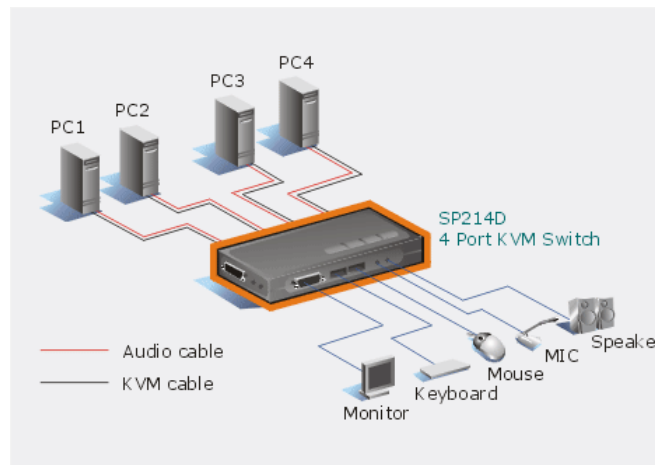


Desktop KVM Switch

SP212D

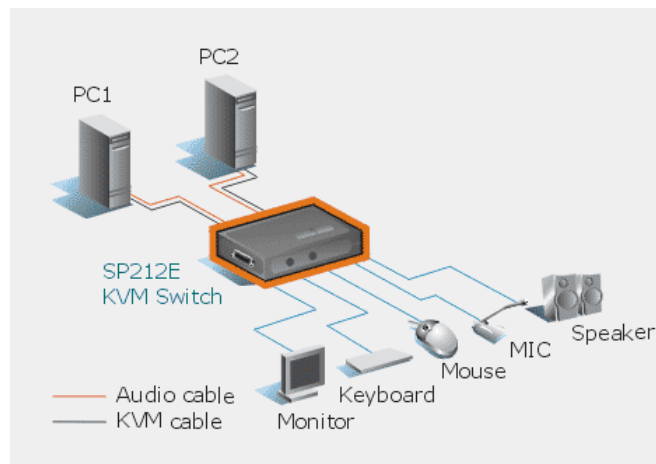


SP214D

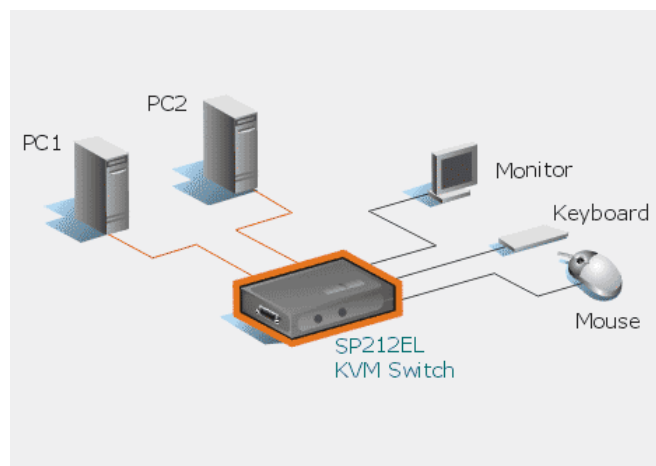


Desktop KVM Switch

SP212E

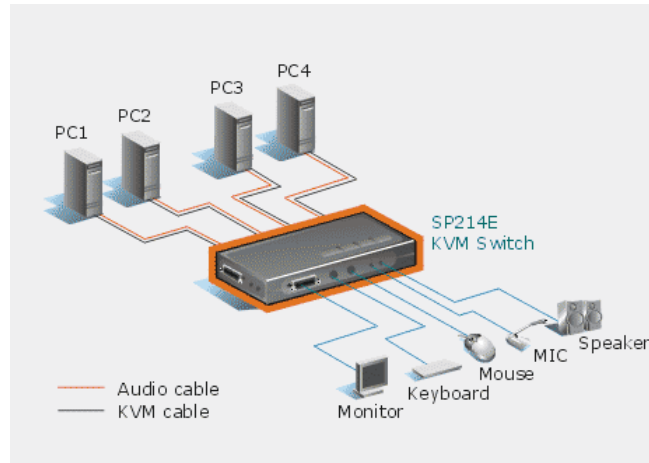


SP212EL

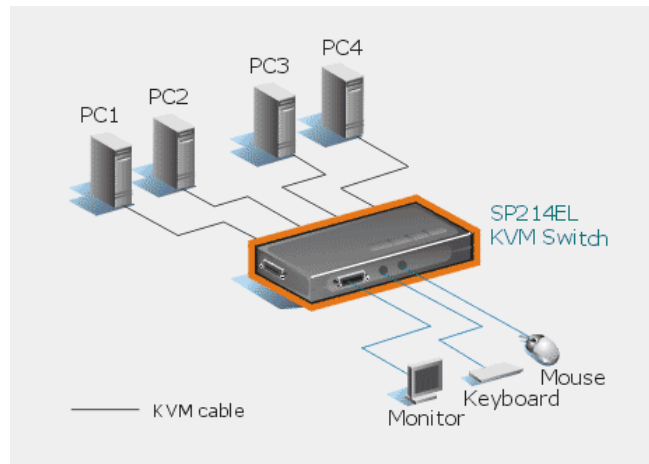


Desktop KVM Switch

SP214E

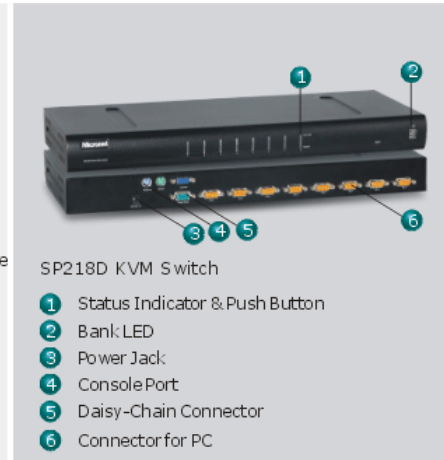
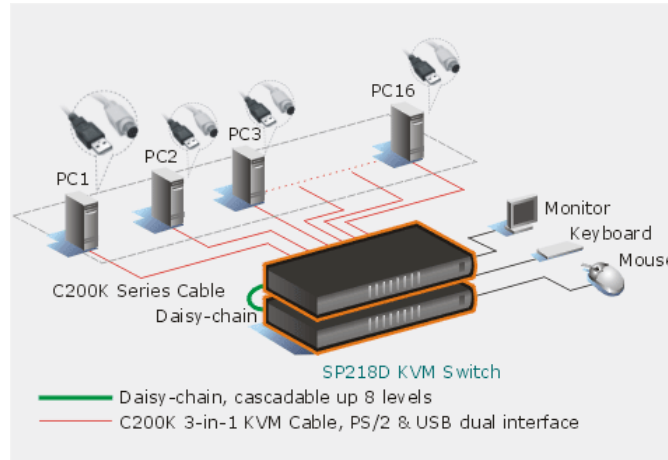


SP214EL

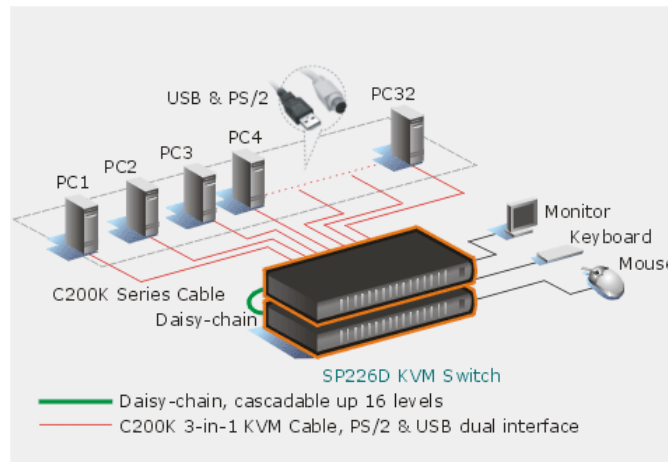


Rack Mount KVM Switch

SP218D

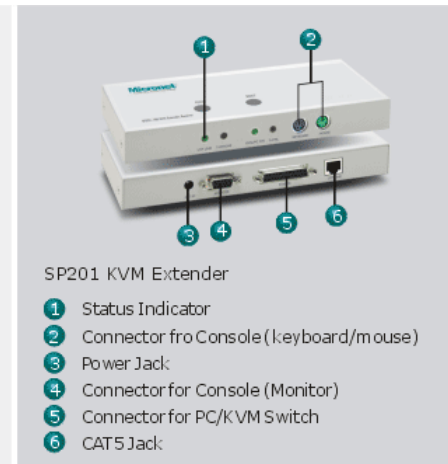
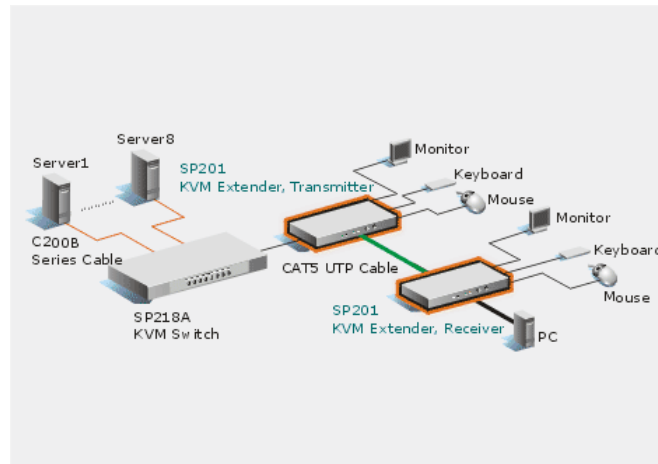


SP226D

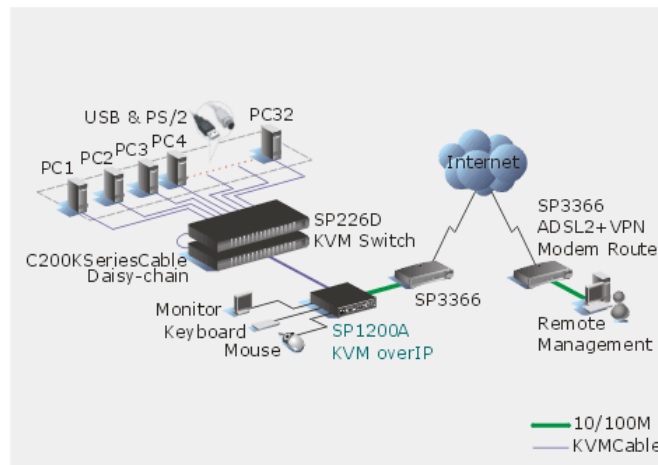


Rack Mount KVM Switch

SP201-180

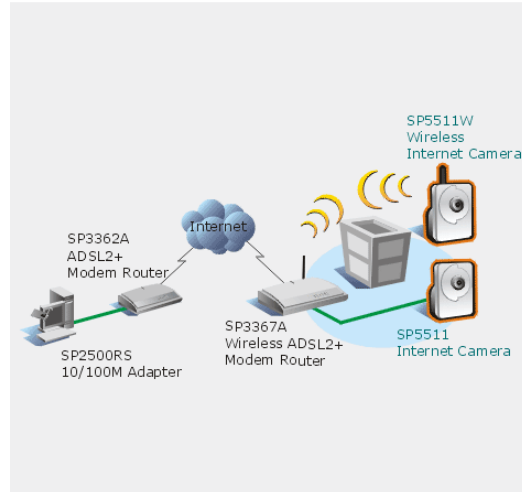


SP1200A



Indoor IP Camera

SP5511
SP5511W



SP5511
Internet Camera

- 1 Status Indicator
- 2 Lens
- 3 Power Jack
- 4 Reset Button
- 5 LAN Port

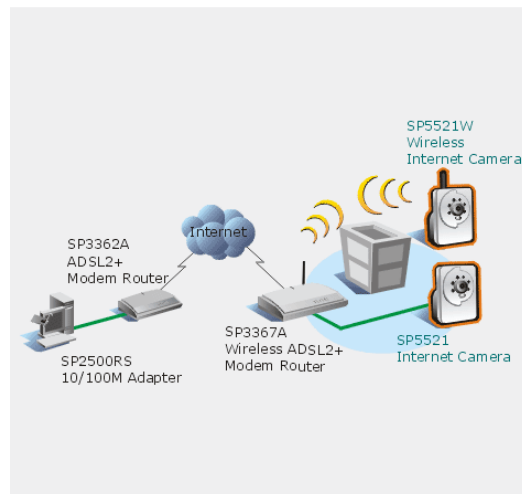


SP5511W
Wireless Internet Camera

- 1 Status Indicator
- 2 Lens
- 3 Detachable Antenna
- 4 Power Jack
- 5 Reset Button
- 6 LAN Port

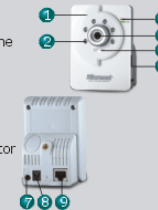


SP5521
SP5521W



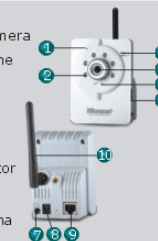
SP5521
Internet Camera

- 1 Internal Microphone
- 2 Infrared LEDs
- 3 Status Indicator
- 4 Lens
- 5 Light Sensor
- 6 USB Port
- 7 Audio-out Connector
- 8 Power Jack
- 9 RJ-45 port



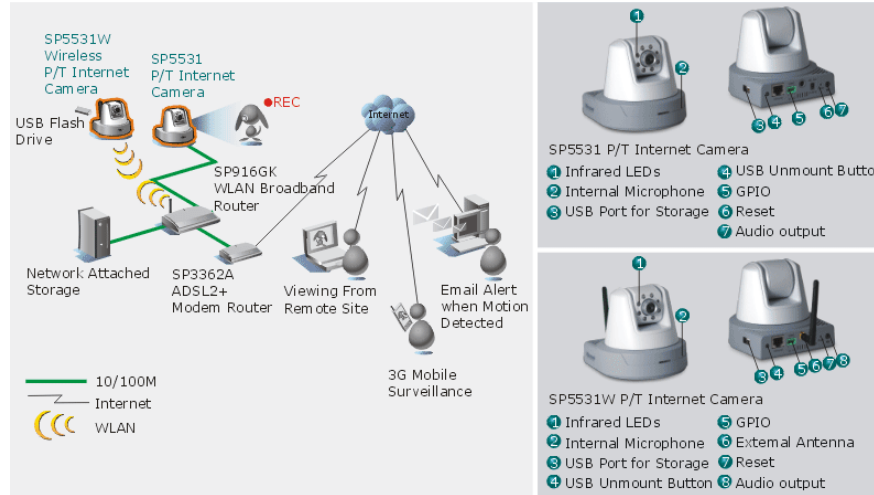
SP5521W
Wireless Internet Camera

- 1 Internal Microphone
- 2 Infrared LEDs
- 3 Status Indicator
- 4 Lens
- 5 Light Sensor
- 6 USB Port
- 7 Audio-out Connector
- 8 Power Jack
- 9 RJ-45 Port
- 10 Detachable Antenna



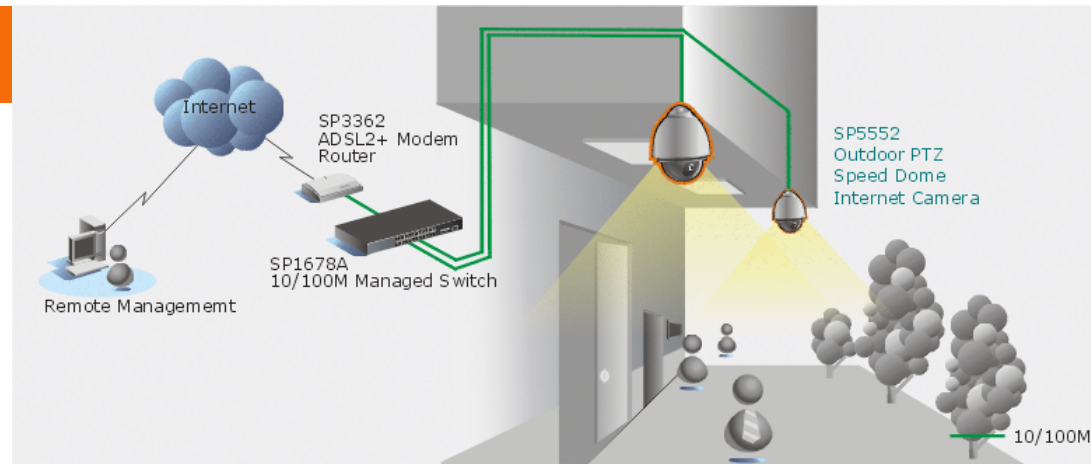
Indoor IP Camera

SP5531
SP5531W



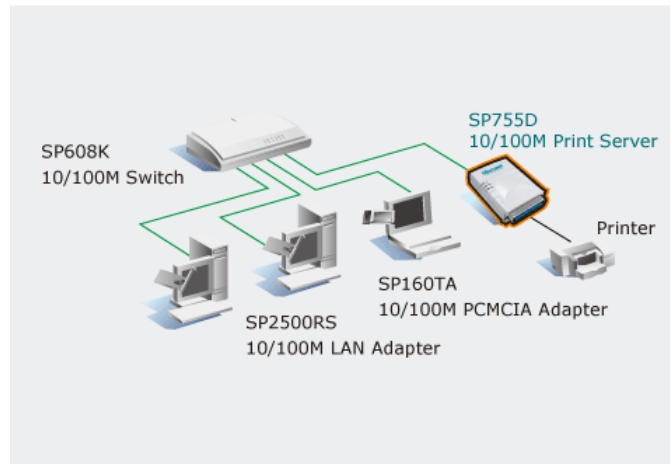
Indoor IP Camera

SP5552-30
SP5552-26

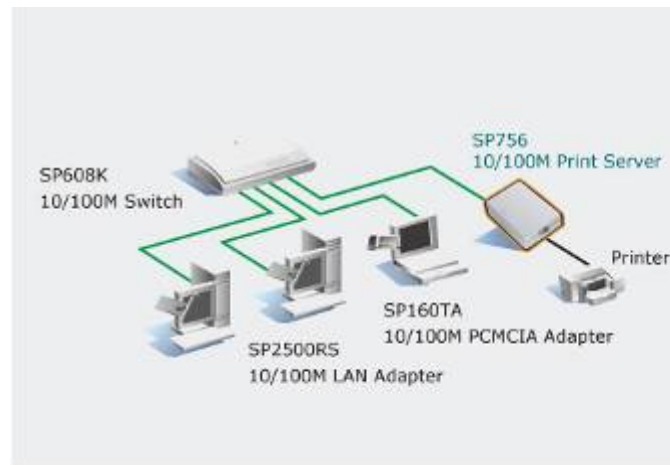


Print Server

SP755D

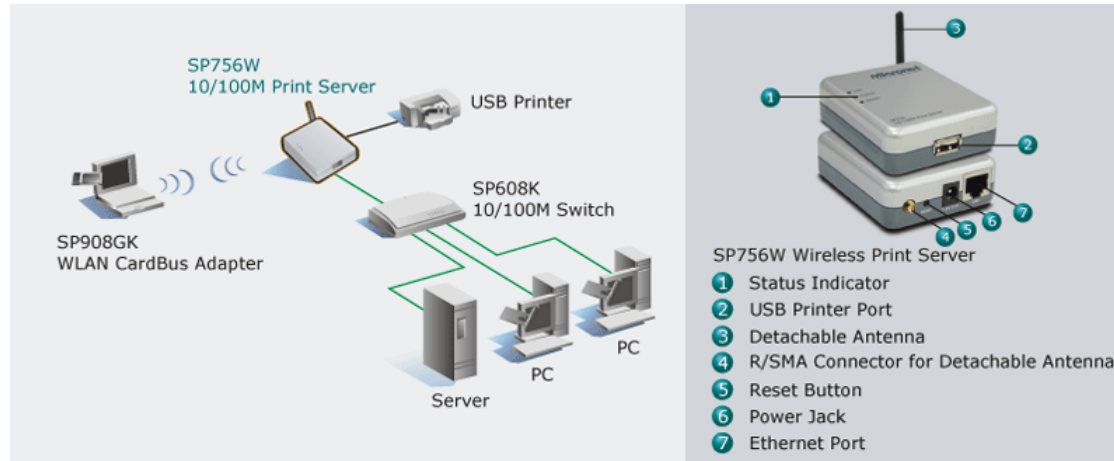


SP756

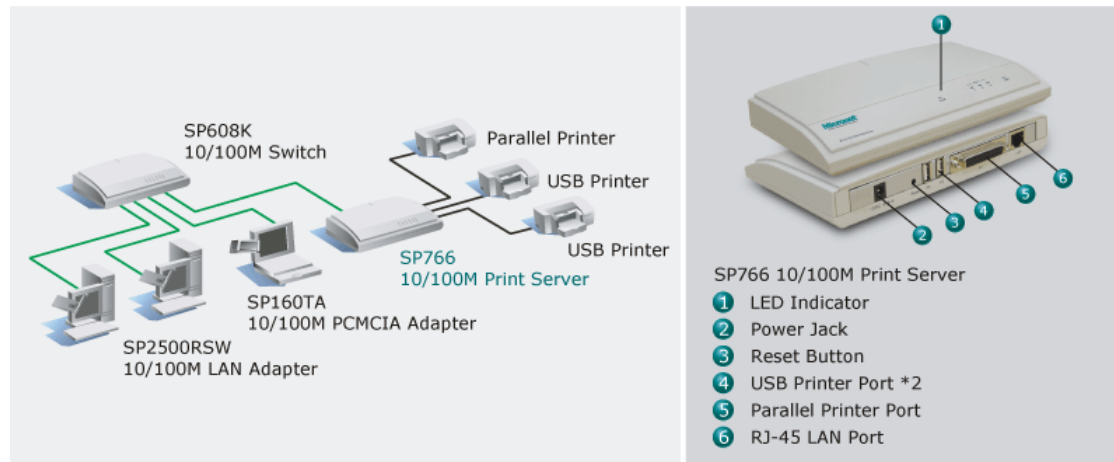


Print Server

SP756W

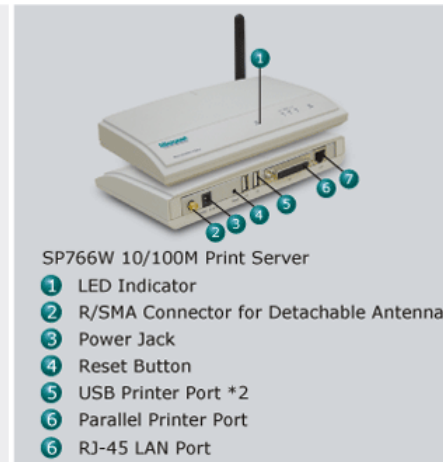
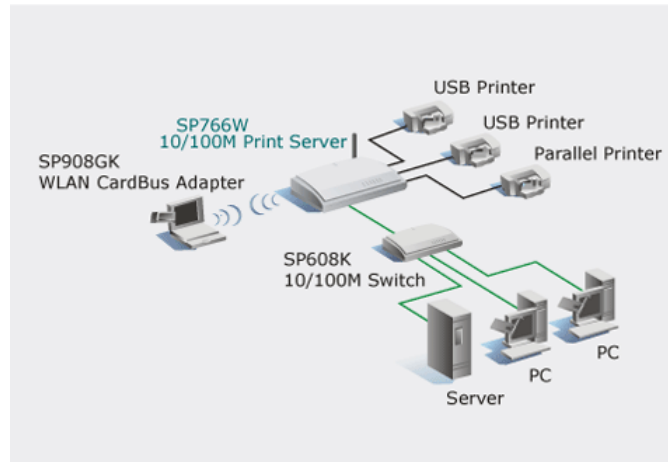


SP766

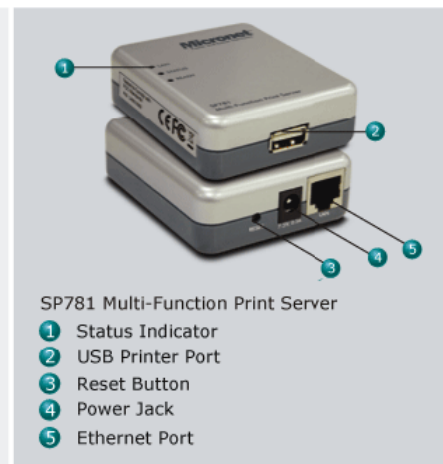
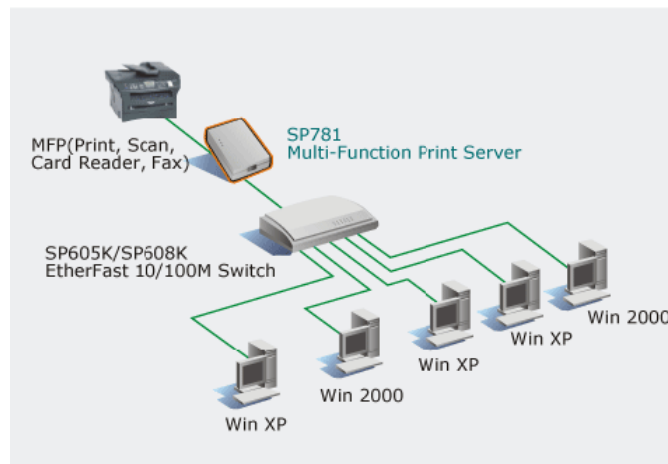


Print Server

SP766W

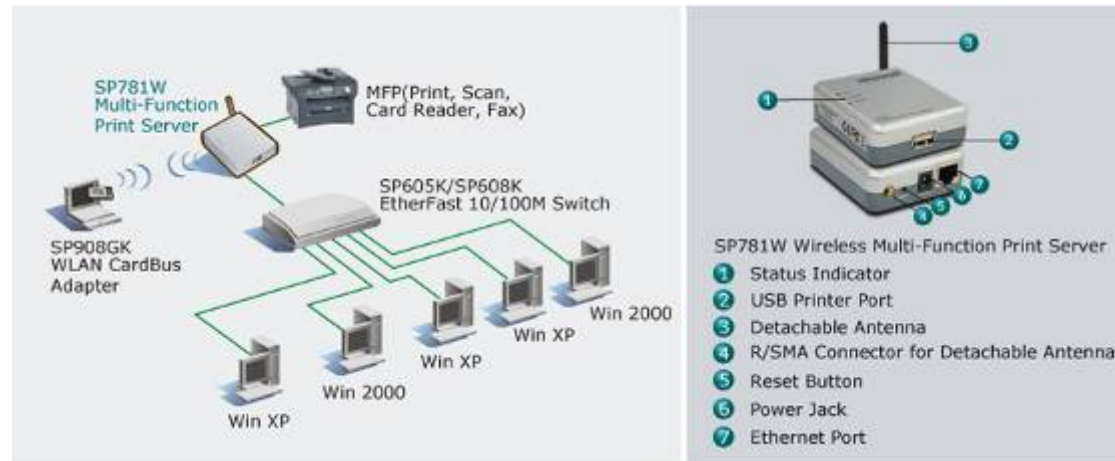


SP781



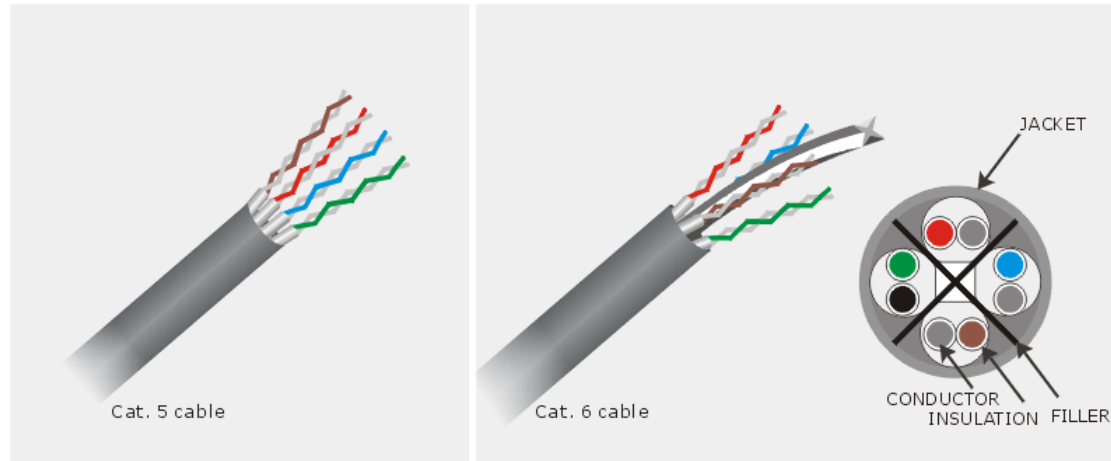
Print Server

SP781W

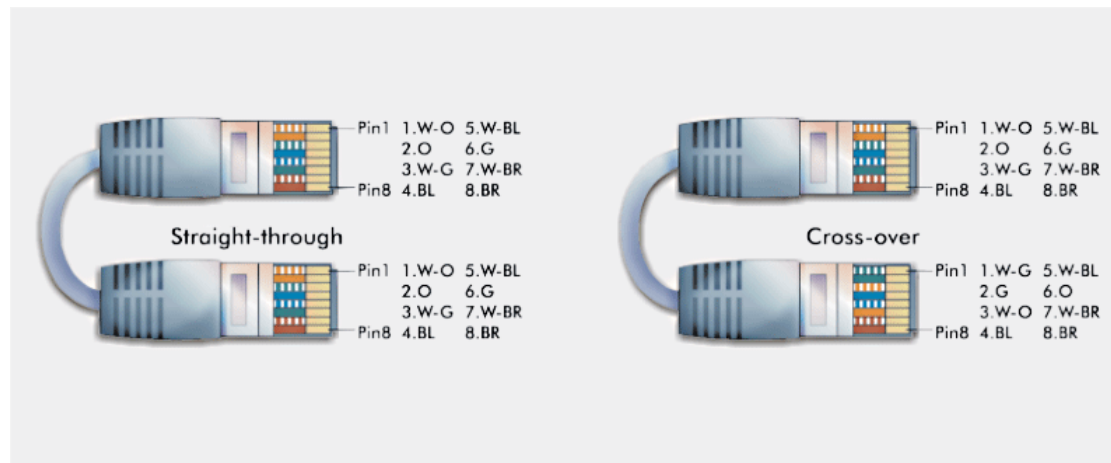


Copper Cable

SP1101E
SP1101S
SP1103E
SP1103S

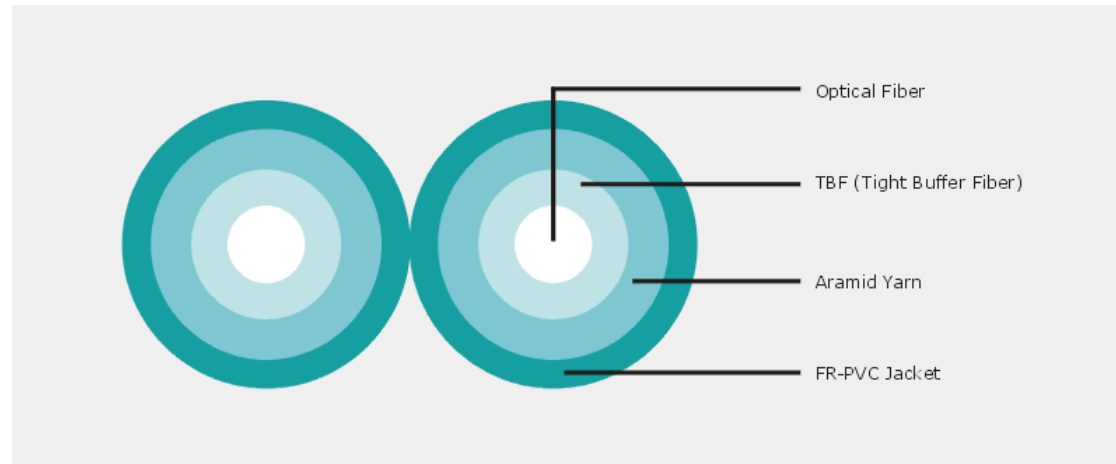


SP1102E
SP1102S



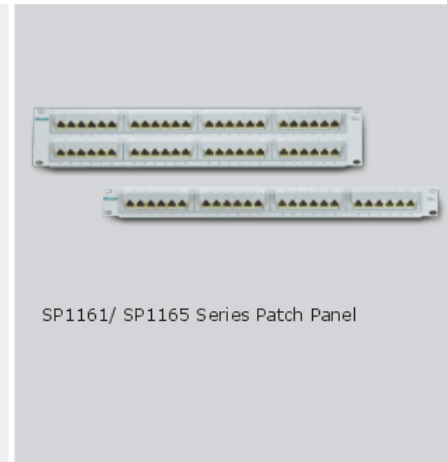
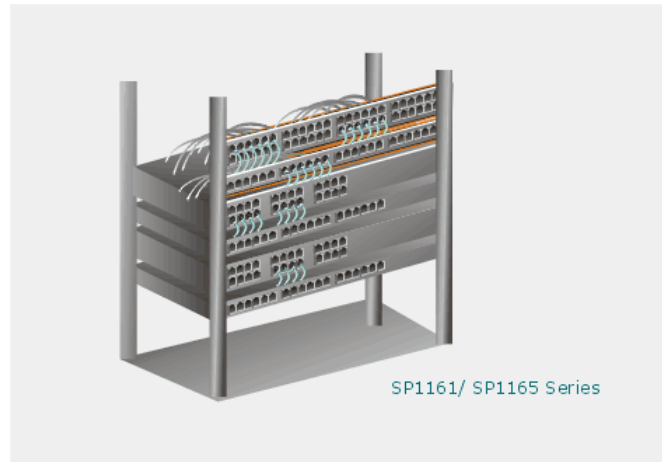
Fiber-Optic Cable

SP1105A-3
SP1105A-5
SP1105B-3
SP1105B-5
SP1106A-3
SP1106A-5
SP1106B-3
SP1106B-5
SP1107A-3
SP1107A-5
SP1108B-3
SP1107B-5

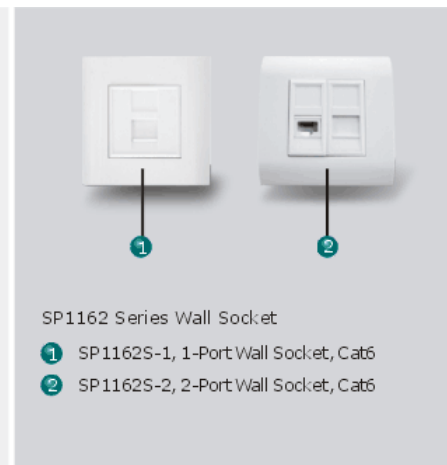
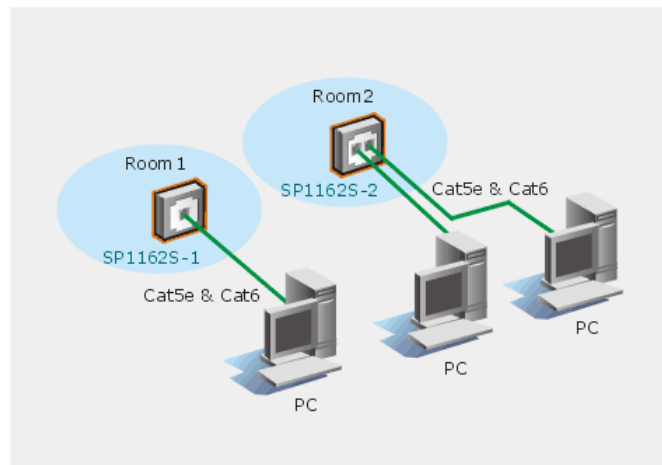


Patch Panel & Wall Socket

SP1161
SP1165
SP1161S
SP1165S

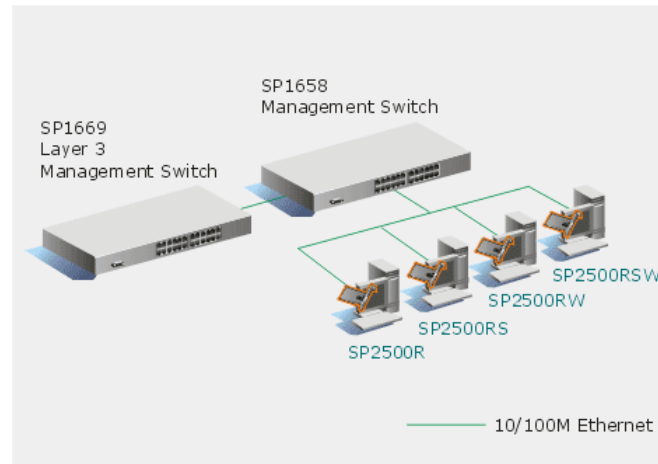


SP1162A-1
SP1162A
SP1162S-1
SP1162S-2

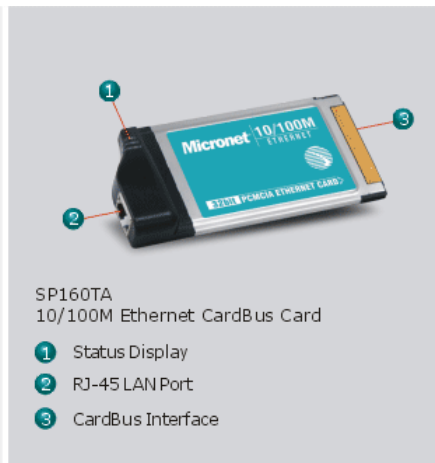
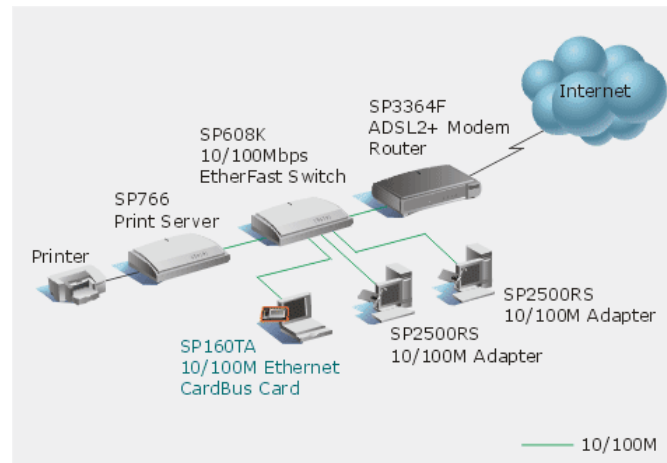


Network Adapter

SP2500RS
SP2500RSW

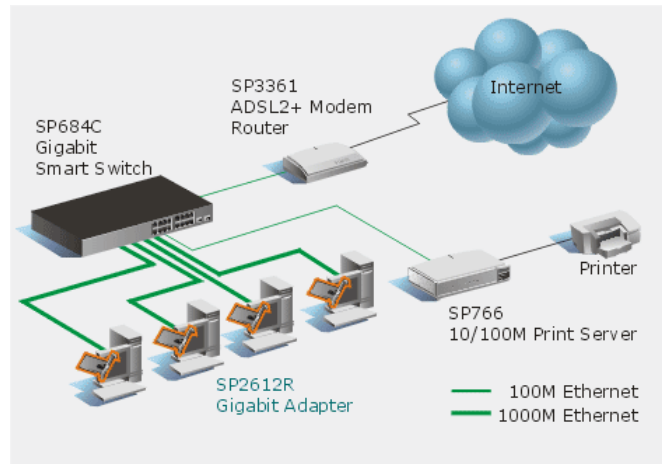


SP160TA

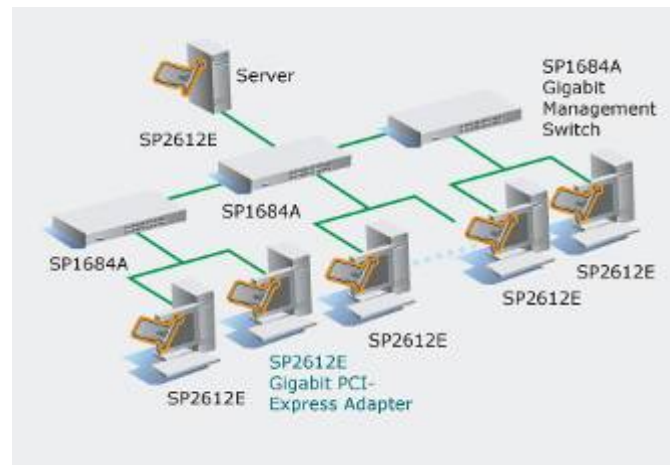


Network Adapter

SP2612R

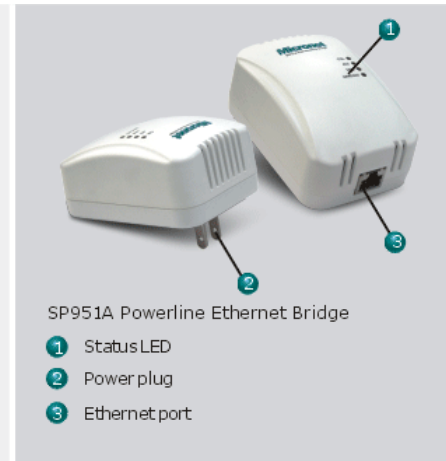
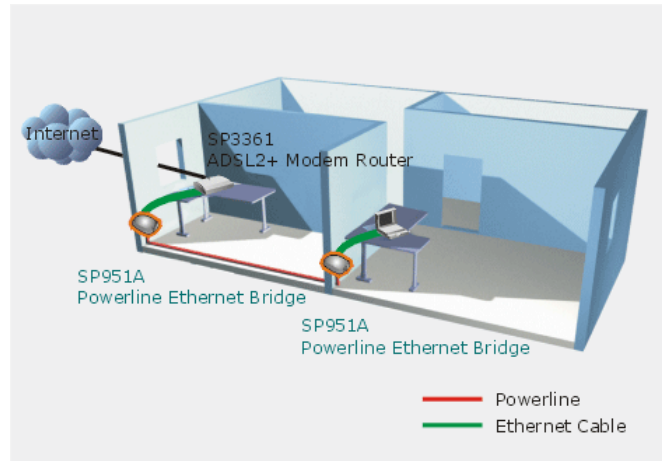


SP2612E



Powerline Bridge

SP951A



SP951B

