



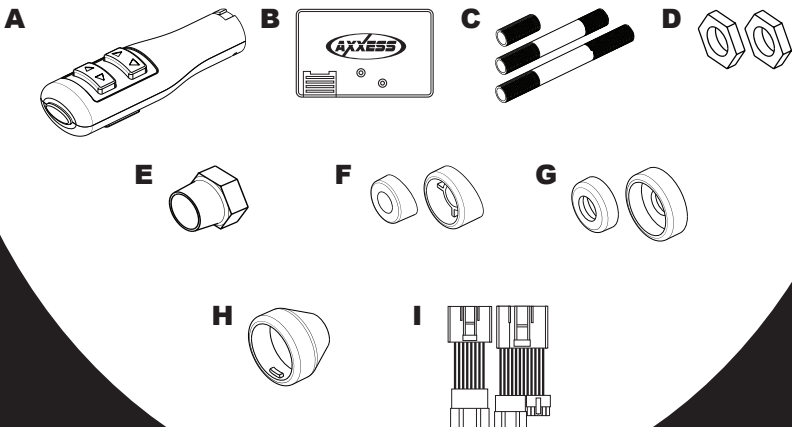
## INSTALLATION INSTRUCTIONS FOR PART OESWC-6502-STK

# OESWC-6502-STK

The OESWC-6502-STK is designed to allow you to add steering wheel control options to 2005 and up Chrysler vehicles with a factory radio that has a 20 pin connector. The column mounted OESWC-6502-STK will allow the customer to adjust their radio without taking their eyes off the road. The OESWC-6502-STK will come pre-programmed with your most popular features, volume up, volume down, seek up, seek down, and source. But with the option of remapping the buttons to fit every customer needs, this makes this a must have interface that the Axxess line offers.

## INTERFACE COMPONENTS

- A) ASWCSTALK • B) OESWC INTERFACE • C) (3) ROD ASSORTMENTS
- D) (2) 3/8 HEX NUTS • E) DECORATIVE NUT • F) (2) ANGLE MOUNT
- G) (2) FLAT MOUNT
- H) TWIST ON COVER • I) VEHICLE T-HARNESS



1-800-221-0932



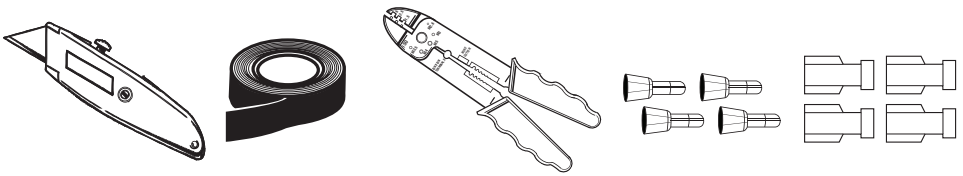
[axxessinterface.com](http://axxessinterface.com)

© COPYRIGHT 2004-2011 METRA ELECTRONICS CORPORATION



## TOOLS REQUIRED FOR INSTALLATION

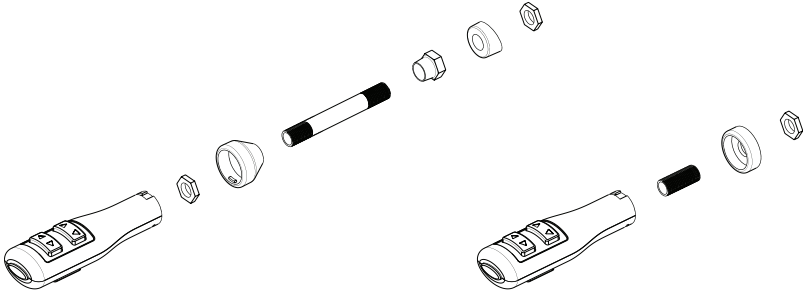
- Cutting Tool •Tape •Crimping Tool
- Connectors (I.E. butt-connectors, bell caps, ECT...) • Female Spade Connectors



**\*Important: Please check steering shroud before drilling to make sure you have enough depth.**



## ASWCSTALK ASSEMBLY



1. Remove and drill a 3/8 hole in the steering wheel shroud.
2. Select desired length rod and thread a 3/8 hex nut on to the shorter threaded section.
3. Run the four wires from the ASWCSTALK through the rod of choice and screw it into the ASWCSTALK
4. Take the twist on cover, run the wires through, and twist the cap on to the ASWCSTALK making sure to align the notches on the cover.
5. Screw the DECORATIVE NUT to the end of the rod with the smaller end facing the ASWCSTALK
6. Select the desired angle mount and put it on to the rod with the angle facing away from the ASWCSTALK.
7. Run wires through the steering wheel shroud and insert rod through the shroud.
8. Secure the ASWCSTALK with the supplied 3/8 nut. (Do not over tighten)
9. Run wires to where the ASWCSTALK interface will be.



## **Wiring Of ASWCSTALK And Interface**

1. Connect the BLACK wires of the ASWCSTALK and the BLACK wire of the interface to ground. You may use the same ground point that is used for the radio.
2. Connect the GREEN/ORANGE and BLACK/GREEN wires of the ASWCSTALK to the corresponding wires on the interface.
3. Connect the RED wire to 12 volt accessory
4. Tap off all other unused wires on the interface.

## **Programming the ASWCSTALK**

\* If this is the first time the ASWCSTALK is being installed:

1. Turn the ignition on; the led will start flashing rapidly which means the interface is looking for the ASWCSTALK and the radio. Go to step 3.

OR

\* If the ASWCSTALK was installed before:

1. Turn the ignition on, the led will flash slowly
2. Hold down the reset button for more then 2 seconds but less then 10 seconds, the led will start flashing rapidly
3. The ASWCSTALK INTERFACE will automatically find the ASWCSTALK and radio.
4. After a couple of seconds the led should stop flashing and not light up for 2 seconds. At this point do not push any buttons.
5. After the 2 seconds there will be a series of 7 flashes, some short and some long.
6. The led will pause for another 2 seconds then flash up to 10 times.
7. This is the end of the auto detection stage. If the ASWCSTALK interface detected the vehicle and the radio successfully the led will light up solid red.



8. Make sure the steering wheel control buttons function correctly in the vehicle and enjoy your radio.

If the ASWCSTALK is mounted on the right side of the steering column follow the instructions below. (Auto-detect must be done first)

1. Turn the ignition on
2. Press the MODE on the ASWCSTALK for 10 seconds
3. Then press volume up for 2 seconds
4. The ASWCSTALK is now configured for the right side.

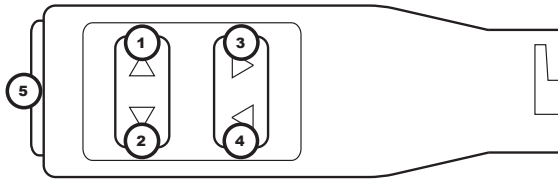
## **Troubleshooting the Auto Detect Mode**

So you tried the auto detect feature and at the end the led did not stay on solid red, it started flashing, or the steering wheel controls did not function properly. That means the interface did not detect the ASWCSTALK or the proper radio. Follow these steps to determine what happened:

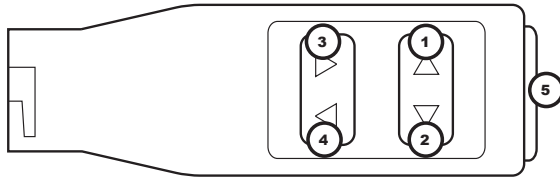
First some basic tips:

1. Verify that you have 12 volt accessory and a good ground to the ASWCSTALK and interface.
2. Verify that the 3.5mm connector is connected to your radio securely and in the correct location.
3. If using the female 3.5mm connector on an Eclipse or Kenwood radio, verify that the radio's SWC wire is connected to the correct wire on the interface.

Once all the information above has been verified and correct, you will need to put the interface back into auto-detect mode. Follow the instructions from "If the ASWCSTALK was installed before" section above, however this time take notice of the led flashes in steps 5 and 6.



1. Volume up
2. Volume down
3. Seek up
4. Seek down
5. Mode (source)



1. Volume up
2. Volume down
3. Seek up
4. Seek down
5. Mode (source)





## INSTALLATION INSTRUCTIONS FOR PART DESWC-6502-STK



### KNOWLEDGE IS POWER

Enhance your installation and fabrication skills by enrolling in the most recognized and respected mobile electronics school in our industry. Log onto [www.installerinstitute.com](http://www.installerinstitute.com) or call 800-354-6782 for more information and take steps toward a better tomorrow.



**Metra recommends MECP certified technicians**

REV. 2/4/11



**1-800-221-0932**



**[axxessinterface.com](http://axxessinterface.com)**

© COPYRIGHT 2004-2011 METRA ELECTRONICS CORPORATION