



SuddenComfort™

by innobella



Folding Furniture 2007



5-Piece Deluxe Folding Furniture Set

Model E47

- 34" x 34" Square Folding Table
- Four - 1½" Padded Seat & Back Chairs
- Folds Flat for Convenient Storage
- Easy-to-Clean Vinyl Upholstery On Table
- Powder Paint Finish
- Non-Marring Leg Caps
- 10 Year Limited Warranty



5-Piece Folding Furniture Set

Model E48

- 34" x 34" Square Folding Table
- Four - ½" Padded Seat Chairs
- Folds Flat for Convenient Storage
- Easy-to-Clean Vinyl Upholstery On Table
- Powder Paint Finish
- Non-Marring Leg Caps
- 10 Year Limited Warranty



Promotional Folding Furniture Set

Model E46

- 34" x 34" Square Folding Table
- Four Padded Seat & Back Chairs
- Folds Flat for Convenient Storage
- Easy-to-Clean Vinyl Upholstery On Table
- Powder Paint Finish
- Non-Marring Leg Caps



(Not Sold Under the Samsonite Brand)



All Steel Folding Chair *Model 33*

- Contoured 16" x 16" Solid Steel Seat
- Quality "Y" Frame Design with Full Hard Temper Tubular Steel Frame
- Triple Welded Leg Brace
- Fully Contoured Backrest & Seat
- Powder Paint Finish
- Non-Marring Leg Caps
- 10 Year Limited Warranty

Padded Folding Chair *Model 38*

- Extra-Wide 16" x 16" Solid Steel Seat
- Quality "Y" Frame Design with Full Hard Temper Tubular Steel Frame
- Triple Welded Leg Brace
- Fully Contoured Backrest
- ½" Hi-Density Foam Seat Cushion
- Powder Paint Finish
- Available in Fabric or Vinyl Upholstery
- Non-Marring Leg Caps
- LIFETIME Limited Warranty



Padded Folding Chair *Model 32*

- Extra-Wide 16" x 16" Solid Steel Seat
- Quality "Y" Frame Design with Full Hard Temper Tubular Steel Frame
- Triple Welded Leg Brace
- Fully Contoured Padded Backrest
- ½" Hi-Density Foam Seat Cushion
- Powder Paint Finish
- Available in Fabric or Vinyl Upholstery
- Non-Marring Leg Caps
- LIFETIME Limited Warranty





Deluxe Padded Folding Chair ~ *Model 37*

- Extra-Wide 16" x 16" Solid Steel Seat
- Quality "Y" Frame Design with Full Hard Temper Tubular Steel Frame
- Triple Welded Leg Brace
- Fully Contoured Padded Backrest
- 1½" Hi-Density Foam Seat Cushion
- Powder Paint Finish
- Available in Fabric or Vinyl Upholstery
- Non-Marring Leg Caps
- LIFETIME Limited Warranty

Padded High Back Folding Chair ~ *Model 45*

- Extra-Wide 16" x 16" Solid Steel Seat
- Quality "Y" Frame Design with Full Hard Temper Tubular Steel Frame
- Triple Welded Leg Brace
- Fully Contoured Polypropylene Backrest
- 1½" Hi-Density Foam Seat Cushion
- Powder Paint Finish
- Available in Fabric or Vinyl Upholstery
- Non-Marring Leg Caps
- LIFETIME Limited Warranty



Deluxe Dining Height Folding Chair ~ *Model 100*

- Extra-Wide 16" x 16" Solid Steel Seat
- Quality "Y" Frame Design with Full Hard Temper Tubular Steel Frame
- Triple Welded Leg Brace
- Fully Contoured Perforated Backrest
- 1½" Hi-Density Foam Seat Cushion
- Powder Paint Finish
- Available in Fabric or Vinyl Upholstery
- Non-Marring Leg Caps
- LIFETIME Limited Warranty





SuddenComfort™
by Innobella

Residential Folding Furniture

Deluxe 3-Slat Back Dining Height Folding Chair

- Extra-Wide 16" x 16" Solid Steel Seat
- Quality "Y" Frame Design with Full Hard Temper Tubular Steel Frame
- Triple Welded Leg Brace
- Fully Contoured Steel Backrest
- 1½" Hi-Density Foam Seat Cushion
- Powder Paint Finish
- Available in Fabric or Vinyl Upholstery
- Non-Marring Leg Caps
- LIFETIME Limited Warranty



Model 110 - with square seat

Model 115 - with waterfall seat



Model 120 - with square seat

Model 125 - with waterfall

Deluxe Fan Back Dining Height Folding Chair

- Extra-Wide 16" x 16" Solid Steel Seat
- Quality "Y" Frame Design with Full Hard Temper Tubular Steel Frame
- Triple Welded Leg Brace
- Fully Contoured Steel Backrest
- 1½" Hi-Density Foam Seat Cushion
- Powder Paint Finish
- Available in Fabric or Vinyl Upholstery
- Non-Marring Leg Caps
- LIFETIME Limited Warranty

Deluxe Game Day Dining Height Folding Chair

- Extra-Wide 16" x 16" Solid Steel Seat
- Quality "Y" Frame Design with Full Hard Temper Tubular Steel Frame
- Triple Welded Leg Brace
- Fully Contoured Steel Backrest
- 1½" Hi-Density Foam Seat Cushion
- Powder Paint Finish
- Available in Fabric or Vinyl Upholstery
- Non-Marring Leg Caps
- LIFETIME Limited Warranty



Model 130 - with square seat



Square Folding Table ~ *Model 84*

- 34" x 34" Square Folding Table
- Folds Flat for Convenient Storage
- Easy-to-Clean Vinyl Upholstery
- Powder Paint Finish
- Non-Marring Leg Caps
- E-Z Action Slide Leg Locks
- 10 Year Limited Warranty

Folding Handy Table ~ *Model N70*

- 20" x 48" Folding Handy Table
- Folds Flat for Convenient Storage
- Easy-to-Clean Vinyl Upholstery
- Powder Paint Finish
- Non-Marring Leg Caps
- E-Z Action Slide Leg Locks
- 10 Year Limited Warranty





Frame Shield Protects
Against Snags and
Pinching



Stacking Chair *SC01 ~ Painted* *SC05 ~ Chrome Plated*

- Strong One-Piece Polypropylene Shell with Contoured Ergonomic Design
- Triple Cross Braced Leg Frame Supports the Polypropylene Seat
- Powder Paint Finish
- 17 Gauge 7/8" Square Steel Tubing
- Non-Marring Floor Glides

<i>GENERAL SPECIFICATION</i>	
<i>Seat height</i>	<i>18"</i>
<i>Overall height</i>	<i>30-1/2"</i>
<i>Overall width</i>	<i>19-1/4"</i>
<i>Overall depth</i>	<i>19-7/8"</i>
<i>Net weight</i>	<i>12 lbs.</i>

Stacking Chair *SC03 ~ Painted* *SC04 ~ Chrome Plated*

- Strong Tubular Frame Eliminates the Need for Crossbraces
- Extra Wide Polypropylene Seat and Back for All Body Types
- Powder Paint Finish
- Injection Molded Seats
- Non-Marring Floor Glides

<i>GENERAL SPECIFICATION</i>	
<i>Seat height</i>	<i>17-3/4"</i>
<i>Overall height</i>	<i>31"</i>
<i>Overall width</i>	<i>21"</i>
<i>Overall depth</i>	<i>21-1/2"</i>
<i>Net weight</i>	<i>14 lbs.</i>



Commercial Furniture
will only be sold under
the Mecco Brand.



Stacking Chair *SC02 ~ Painted*

- Strong, Durable Blow Mold Seat and Back
- Square Steel Tubing
- Powder Paint Finish
- Non-Marring Floor Glides
- Stacks For Convenient Storage



GENERAL SPECIFICATION	
<i>Seat height</i>	<i>18"</i>
<i>Overall height</i>	<i>32 3/4"</i>
<i>Overall width</i>	<i>18"</i>
<i>Overall depth</i>	<i>22"</i>
<i>Net weight</i>	<i>13 lbs.</i>

Commercial Furniture
will only be sold under
the Meco Brand.



Folding Chair Model RC01

- Steel Rivets Attach Seat and Back to Frame
- Overlapping Back Protects the Frame
- Slide Track Has Rolled Edges To Eliminate Sharp Edges
- Double-Riveted Rear Cross Brace 3/8" From Floor for Easy Set Up
- Powder Paint Finish
- Polypropylene Seat and Back
- Non-Marring Leg Caps

GENERAL SPECIFICATION	
<i>Seat height</i>	17-5/8"
<i>Overall height</i>	31-1/2"
<i>Overall width</i>	17-1/2"
<i>Overall depth</i>	17"
<i>Net weight</i>	6-3/4 lbs.

Folding Chair Model RC02

- Steel Rivets Attach Seat and Back to Frame
- Overlapping Back Protects the Frame
- Slide Track Has Rolled Edges to Eliminate Sharp Edges
- Double-Riveted Rear Cross Brace 3/8" From Floor For Easy Set Up
- Powder Paint Finish
- Polypropylene Seat and Back
- Non-Marring Leg Caps

GENERAL SPECIFICATION	
<i>Seat height</i>	17-3/4"
<i>Overall height</i>	34-1/2"
<i>Overall width</i>	17-1/2"
<i>Overall depth</i>	17-1/2"
<i>Net weight</i>	6.63 lbs.



Blow Mold Folding Chair ~ Model UC01

- Contoured Blow Mold Back For Comfort
- Heavy Duty Polyethylene Seat and Back
- 7/8" Round Main Frame Tubing
- Cross Brace on Front and Back For Added Support
- Powder Paint Finish
- Weather Resistant
- Non-Marring Leg Caps



Blow Mold Folding Chair ~ Model UC03

- Contoured SWIVEL Blow Mold Back For Maximum Comfort
- Heavy Duty Polyethylene Seat and Back
- 7/8" Round Main Frame Tubing
- Cross Brace On Front and Back For Added Support
- Powder Paint Finish
- Weather Resistant
- Non-Marring Leg Caps



Blow Mold 30" x 72" Utility Table

Model UT05

- Blow Molded Smooth Surface Table Top Made Of Strong, Durable Polyethylene
- Superior Strength & Durability
- Powder Paint Finish
- Indoor / Outdoor Use
- Stain Resistant & Easy-to-Clean
- Folds for Easy Storage
- Minimum Order Applies

Blow Mold 24" x 48" Utility Table ~

Model UT01

- Blow Molded Smooth Surface Table Top Made Of Strong, Durable Polyethylene
- Superior Strength & Durability
- Indoor / Outdoor Use
- Powder Paint Finish
- Stain Resistant & Easy-to-Clean
- Folds For Easy Storage
- Minimum Order Applies

Blow Mold Utility Chair ~ Model UC04

- Heavy Duty Polyethylene Seat & Back
- Ergonomically Designed With a Flared Back For An Attractive Style
- Three Cross Braces For Superior Strength
- Indoor / Outdoor Use
- Powder Paint Finish
- Stain Resistant & Easy-To-Clean
- Folds For Easy Storage
- Minimum Order Applies





30" x 60" Blow Mold Utility Table *Model UT04*

- Blow Molded Smooth Surface Table Top Made Of Strong, Durable Polyethylene
- Two Adjustable Heights-24.5" & 29.3"
- Superior Strength & Durability
- Indoor / Outdoor Use
- Powder Paint Finish
- Stain Resistant & Easy-to-Clean
- Folds for Easy Storage
- Minimum Order Applies

30" x 72" Blow Mold Utility Table *Model UT09*

- Blow Molded Smooth Surface Table Top Made Of Strong, Durable Polyethylene
- 30" x 72" Fold-In-Half Utility Table
- Superior Strength & Durability
- Indoor / Outdoor Use
- Powder Paint Finish
- Stain Resistant & Easy-to-Clean
- Folds for Easy Storage
- Minimum Order Applies





Blow Mold Folding Chair ~ *Model UC05*

- Deep Contoured Back And Seat For Added Comfort
- Heavy Duty Polyethylene Seat And Back Are Extremely Durable
- Integrated Hand Hold For Easy Handling
- Arched Cross Brace On Front And Back For Superior Strength
- 1-1/8" Round 16 Gauge Main Frame Tubing
- Powder Paint Finish
- Non-Marring Leg Caps

GENERAL SPECIFICATION	
<i>Seat height</i>	<i>18-1/2"</i>
<i>Overall height</i>	<i>33-1/8"</i>
<i>Overall width</i>	<i>18-1/2"</i>
<i>Overall depth</i>	<i>21-7/8"</i>
<i>Net weight</i>	<i>11-1/2 lbs.</i>

Blow Mold Folding Chair ~ *Model UC06*

- Deep Contoured Back And EXTRA THICK Seat For Added Comfort
- Heavy Duty Polyethylene Seat And Back Are Extremely Durable
- Integrated Hand Hold For Easy Handling
- Arched Cross Brace On Front And Back For Superior Strength
- 1-1/8" Round 16 Gauge Main Frame Tubing
- Powder Paint Finish
- Non-Marring Leg Caps

GENERAL SPECIFICATION	
<i>Seat height</i>	<i>18-1/2"</i>
<i>Overall height</i>	<i>33-1/8"</i>
<i>Overall width</i>	<i>18-1/2"</i>
<i>Overall depth</i>	<i>21-7/8"</i>
<i>Net weight</i>	<i>12 lbs.</i>



Blow Mold 24" x 48" Folding Table ~ Model UT02



- Blow Molded Smooth Surface Table Top Made Of Strong, Durable Polyethylene
- 16-Gauge 1-1/8" Steel Frame For Greater Strength
- Powder Paint Finish
- Indoor/Outdoor Use
- Gravity Leg Locks
- Non-Marring Leg Caps

GENERAL SPECIFICATION	
<i>Overall height</i>	29"
<i>Overall width</i>	48"
<i>Overall depth</i>	24"

Blow Mold 30" x 60" Folding Table ~ Model UT03

- Blow Molded Smooth Surface Table Top Made Of Strong, Durable Polyethylene
- 16-Gauge 1-1/8" Steel Frame For Greater Strength
- Powder Paint Finish
- Indoor/Outdoor Use
- Gravity Leg Locks
- Non-Marring Leg Caps

GENERAL SPECIFICATION	
<i>Overall height</i>	29"
<i>Overall width</i>	60"
<i>Overall depth</i>	30"



**Blow Mold 30" x 72" Folding Table ~
Model UT07**



- Blow Molded Smooth Surface Table Top Made Of Strong, Durable Polyethylene
- 16-Gauge 1-1/8" Steel Frame For Greater Strength
- Powder Paint Finish
- Indoor/Outdoor Use
- Gravity Leg Locks
- Non-Marring Leg Caps

GENERAL SPECIFICATION	
<i>Overall height</i>	29"
<i>Overall width</i>	72"
<i>Overall depth</i>	30"

**Blow Mold 30" x 72" Fold-In-Half Table ~
Model UT10**

- Blow Molded Smooth Surface Table Top Made Of Strong, Durable Polyethylene
- 16-Gauge 1-1/8" Steel Frame For Greater Strength
- Powder Paint Finish
- Indoor/Outdoor Use
- Gravity Leg Locks
- Non-Marring Leg Caps



GENERAL SPECIFICATION	
<i>Overall height</i>	29"
<i>Overall width</i>	72"
<i>Overall depth</i>	30"

Blow Mold 30" x 96" Folding Table ~

Model UT12

- Blow Molded Smooth Surface Table Top
Made Of Strong, Durable Polyethylene
- 16-Gauge 1-1/8" Steel Frame
For Greater Strength
- Powder Paint Finish
- Indoor/Outdoor Use
- Gravity Leg Locks
- Non-Marring Leg Caps



GENERAL SPECIFICATION	
Overall height	29"
Overall width	96"
Overall depth	30"

Blow Mold 60" Round Folding Table ~

Model UT13



- Blow Molded Smooth Surface Table Top
Made Of Strong, Durable Polyethylene
- 16-Gauge 1-1/8" Steel Frame
For Greater Strength
- Powder Paint Finish
- Indoor/Outdoor Use
- Gravity Leg Locks
- Non-Marring Leg Caps

GENERAL SPECIFICATION	
Overall height	29"
Overall width	60"
Overall depth	60"

Blow Mold 48" Round Folding Table ~

Model UT11 (not shown)



Personal Table ~ *Model UT14*

- 19-1/2" x 30" Top
- Blow Molded Smooth Surface Table Top Made Of Strong, Durable Polyethylene
- Adjustable Heights
- Superior Strength & Durability
- Indoor / Outdoor Use
- Powder Paint Finish
- Stain Resistant & Easy-to-Clean
- Folds for Easy Storage

Tray Tables ~ *Model TV01-Steel Top*

- 14.5" x 19" Folding TV Table
- Folds Flat for Convenient Storage
- Smooth Top Surface
- Powder Paint Finish
- Non-Marring Leg Caps





**Model EF04 ~
4' Blow Mold
Picnic Table**

- High Impact Polyethylene
- Stain Resistant And Easy-To-Clean
- UV Inhibitors Protect Against Fading & Cracking
- Folds Flat For Convenient Storage
- Great For All Weather Use!

**Model EF05 ~
6' Blow Mold
Picnic Table**

- High Impact Polyethylene
- Stain Resistant And Easy-To-Clean
- UV Inhibitors Protect Against Fading & Cracking
- Folds Flat For Convenient Storage
- Great For All Weather Use!



Storable Picnic Tables



Model EF01 ~ 2 Person Blow Mold Swing

- High Impact Polyethylene
- Stain Resistant And Easy-To-Clean
- Canvas Covering For Protection From The Elements
- UV Inhibitors Protect Against Fading & Cracking

Model EF02 ~ 2 Person Blow Mold Glider

- High Impact Polyethylene
- Stain Resistant And Easy-To-Clean
- Designed For Smooth Gliding
- UV Inhibitors Protect Against Fading & Cracking



Model EF03 ~ 2 Person Blow Mold Bench

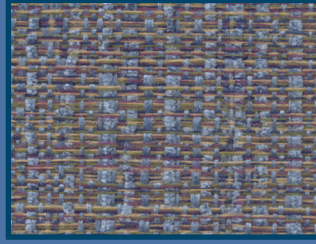
- High Impact Polyethylene
- Stain Resistant And Easy-To-Clean
- Contoured For Comfort
- UV Inhibitors Protect Against Fading & Cracking

Outdoor Seating

Fabric Swatches



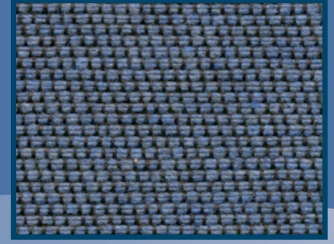
#3J Network



#3R Cliffside



#3S Motif



#3T Wrangler



#3V Haylea



#3W Bronze Suede



#3X Mist



#3Y Fritz



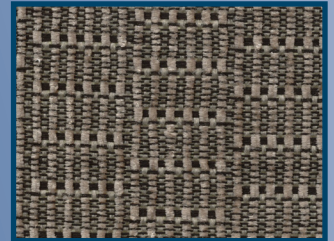
#3Z Sand



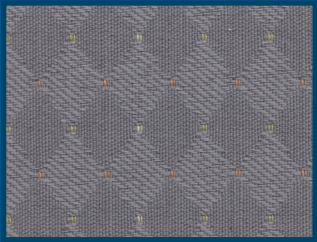
#4A Mocha



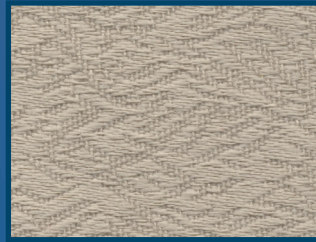
#4B Ebony



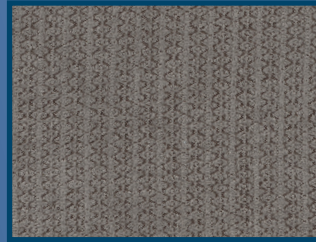
#4C Courtyard



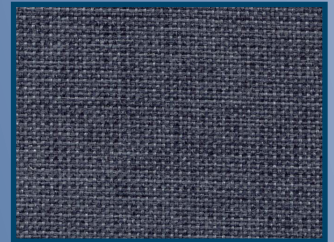
#4D Kaylee



#4E Sandscape



*#4G Haze**



#4K Dusk



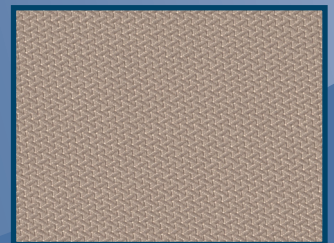
#4L Pebble



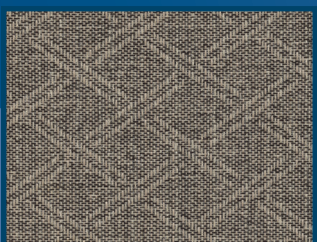
#4M Robin



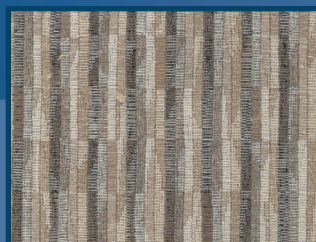
#4N Dunes



#4P Harvest



#66 Zuni



*#84 Cabin***

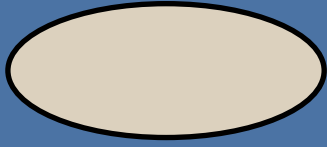
*For E46 Set Only

**Exclusive - must get approval before using

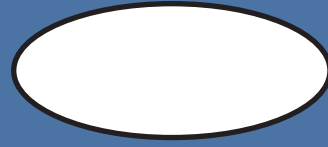
Paint Frame Swatches



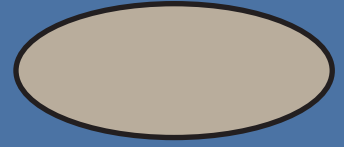
#01 Black



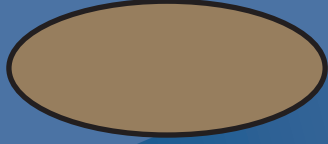
#03 Fawn



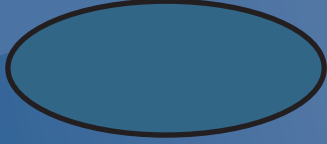
#04 White



#09 Buff



#21 Taupe*



#22 Cadet Blue Lace



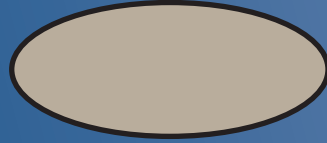
#25 Chicory Lace



#29 Grey Dream



#33 Sterling



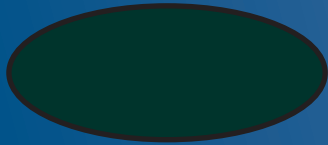
#34 Buff Lace



#48 Chestnut Lace



#49 Black Lace



#92 Packers Green

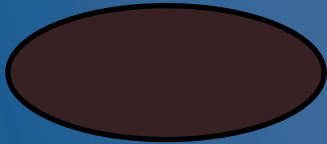


#93 Charcoal*

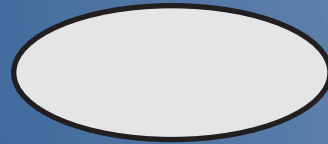
Vinyl Swatches



#09 Fawn Vinyl



#1H Chestnut Vinyl



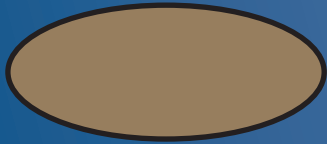
#34 Grey Dream Vinyl



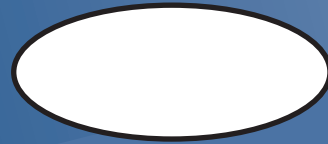
#44 Chicory Vinyl



#4F Gold Vinyl



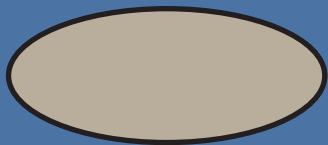
#4J Taupe Vinyl*



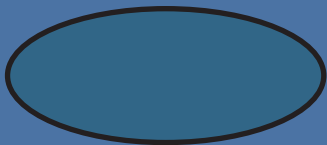
#50 White Vinyl



#80 Black Vinyl



#83 Buff Vinyl



#85 Cadet Blue Vinyl

*For E46 Set Only **Exclusive - must get approval before using

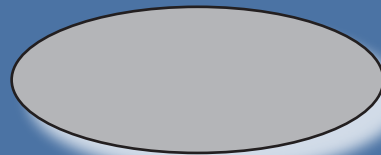
Blow Mold Paint Frame Colors



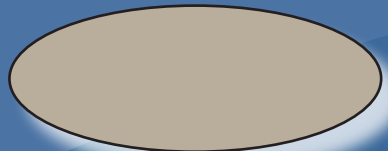
#03 Fawn



#25 Chicory



#33 Sterling



#34 Buff Lace



#53 Antique Grey



#54 Mocha



#82 Gunmetal



#94 Granite

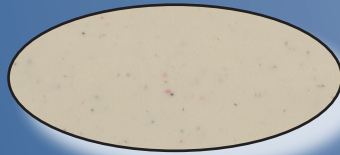
Blow Mold Plastic Colors



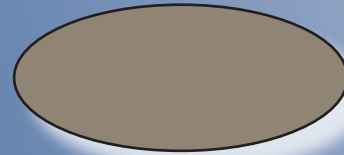
#2W Grey



#2X Black



#2Y Fawn



#2Z Chicory



#3H Sand



#3U Cream



#4R Ash



Meco Corporation has been setting the standard in the furniture industry since 1971 offering only quality products and using only the finest components available.

The Sudden Comfort collection combines our experience and the latest styles and trends to give you the most dynamic assortment of folding furniture in the industry.

Meco Corporation
1500 Industrial Road • Greeneville, TN 37745
Phone - 1-800-251-7558 • Fax - 1-423-639-1055