



**Cordless Screwdrivers / Cordless Angle Screwdrivers**  
BFT041R/ BFT082R/ BFT124R / BFL201R/ BFL301R/ BFL402R

Rigid Aluminum alloy Head



Built-in Bluetooth Transmitter



**A** Indication Lamp

and Beeper to inform low battery power and OK/ NOK judgment of each fastening



Compact and Lightweight Brushless DC motor



Non-Slip Grip with dimpled surface



**B** Reverse Switch

Push-button conveniently located

**C** On/Off Switch with:

/// Delayed restarter for preventing overtightening; for one second after a screw has been tightened, the motor does not restart even if the trigger is unintentionally pulled.

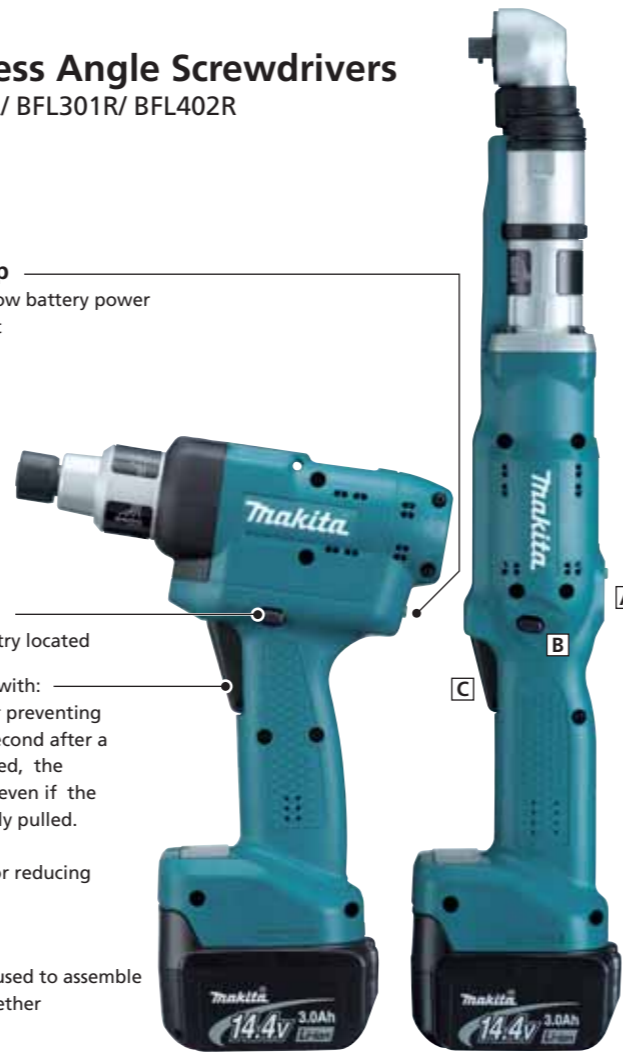
/// Soft start function for reducing starting shock

/// Machine screws are used to assemble housing (L) and (R) together for high reparability.

14.4V Li-ion Battery (Sold separately)



Built-in LED Job Light for more illuminated operation



**Cordless Screwdrivers**  
BFT041R/ BFT082R/ BFT124R  
**Cordless Angle Screwdrivers**  
BFL201R/ BFL301R/ BFL402R

Satisfy Professional's Needs



# Torque Tracer

Wireless Data Communication by Bluetooth



Accessories

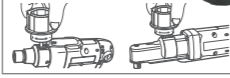
Receiver RCV02  
Part No. 194480-1



CD-ROM (software)  
Part No. 889919-4



Torque adjust tool (Adjust Grip)  
Part No. 765027-4



Protector



BFT041R series Red  
BFL201R Yellow  
BFL301R / BFL402R Type A Red  
BFL301R / BFL402R Type C Blue

Part No. A-47977 (with CD-ROM set)

CD-ROM (instruction manual)  
Part No. 889920-9

RS-232C cable  
Part No. 638386-8  
USB serial adapter set  
Part No. 194089-9



Grip Part No. 273443-1  
Grip base set Part No. 193874-7



12.7mm(1/2") Square drive  
For Model BFL301R, BFL402R  
Part No. 154450-2



For Model	BFT041R series	BFL201R	BFL301R / BFL402R	
Color			Type A	Type C
Red	418425-8	418065-2	418744-2	418750-7
Blue	418424-0	418064-4	418743-4	418749-2
Yellow	418423-2	418032-7	418691-7	418693-3
Clear	450331-1	418066-0	418745-0	418751-5

Cordless Screwdriver



Cordless Angle Screwdriver



- Soft Start
- Reversing
- Electric Brake
- Built-in Job Light

	BFT041R	BFT082R	BFT124R	BFL201R	BFL301R	BFL402R
Capacity	Hex. 6.35mm (1/4")	Hex. 6.35mm (1/4")	Hex. 6.35mm (1/4")	Square drive 9.5mm (3/8")	Square drive 9.5mm (3/8")	Square drive 9.5mm (3/8")
No load speed	800rpm	860rpm	600rpm	360rpm	260rpm	200rpm
Recommended torque	Hard / Soft 1-4 / 1-4N.m	4-8 / 4-8N.m	6-12 / 6-12N.m	10-20 / 10-20N.m	16-30 / 16-30N.m	25-40 / 25-40N.m
Dimensions (L x W x H)	191 x 72 x 266mm (7-1/2" x 2-13/16" x 10-1/2")	191 x 72 x 266mm (7-1/2" x 2-13/16" x 10-1/2")	191 x 72 x 266mm (7-1/2" x 2-13/16" x 10-1/2")	429 x 72 x 98mm (16-7/8" x 2-13/16" x 3-7/8")	477 x 72 x 98mm (18-3/4" x 2-13/16" x 3-7/8")	477 x 72 x 98mm (18-3/4" x 2-13/16" x 3-7/8")
Net weight	1.5kg (3.3lbs)	1.5kg (3.3lbs)	1.5kg (3.3lbs)	1.7kg (3.8lbs)	2.0kg (4.4lbs)	2.0kg (4.4lbs)
Voltage	14.4V	14.4V	14.4V	14.4V	14.4V	14.4V

Standard Equipment None (Battery and charger are sold separately)

Items of standard equipment and specifications may differ by country or area.

**Makita Corporation**

3-11-8 Sumiyoshi-cho, Anjo, Aichi, 446-8502 Japan

PRINTED IN JAPAN Z15212-2 2007-06



Lithium-ion eXtreme Technology



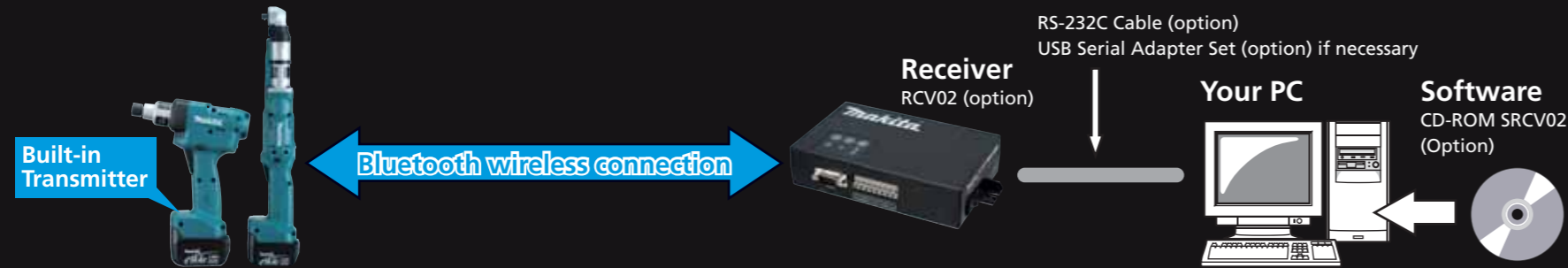
# Torque Tracer

Makita Wireless Fastening Data Capture System



## Tool + Receiver + Your PC (Fastening Data Saving)

This system enables to transmit various fastening data from the tool and to save them in your PC via Receiver RCV02



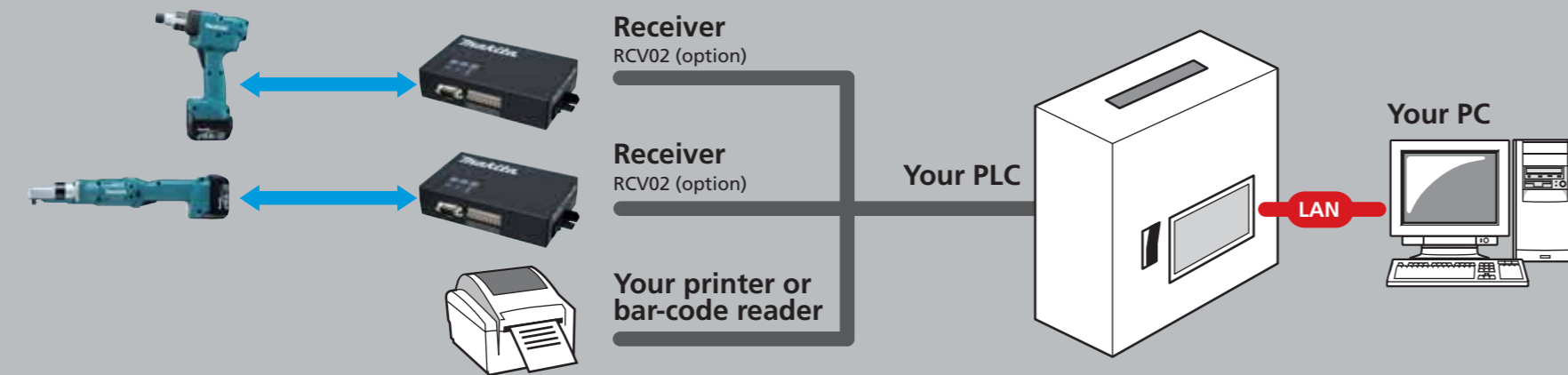
Fastening data can be temporarily saved in the tool when transmission is shut up ; up to nine data can be temporarily saved.

The followings are main data that can be transmitted:  
**Batch count**  
 (Counting of the number of OK fastening processes)  
**Torque value\***  
**Turning angle\***  
**Tool ID**  
**Error code**  
 \*Model BFT041R cannot transmit these data

The system uses one-to-one connection between the tool and Receiver  
 Equipped with :  
 \*Output terminal for OK/NOK judgment of each fastening and Batch count (Counting of the number of OK fastening processes)  
 \*Input terminal for resetting fastening process

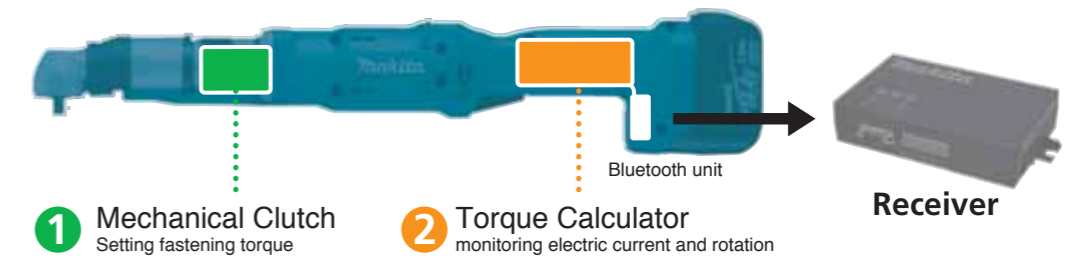
By installing the software in CD-ROM SRCV02 on your PC, interface can be established between users and the tool, enabling to program and monitor the tool from the PC.  
 \*The software is available in English and Italian  
 \*Programmed settings can be protected by setting a password

## Can be extended to your peripheral devices by your PLC (Programmable logic controller)



## Self Torque Check System by two independent devices

(exc. BFT041R)



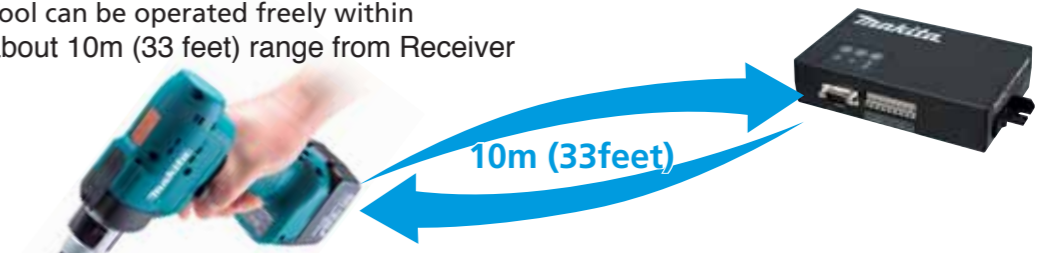
## High Torque Accuracy

$\pm 10\%$ ,  $\pm 3\sigma$ ,  $C_m \geq 1.67$



## Easy to operate thanks to wireless

Tool can be operated freely within about 10m (33 feet) range from Receiver



Comparison of function by combination of Tool and other Devices

	Preventing human error	Saving torque data	Outputting signal from receiver to light
Tool + Receiver + Your PC	✓	✓ (exc. BFT041R)	✓
Tool + Receiver + Your beacon light	✓	✗	✓
Tool only	✓	✗	✗

Comparison of function by combination of Tool and other Devices

	Cordless	Saving Torque Data
<b>Torque Tracer</b> BFT/BFL series	✓	✓ (exc. BFT041R)
Competitor "A"	✗	✓
Competitor "B"	✓	✗



Highly Reliable Communication System by Bluetooth  
 interactive communication and a strong resistance against radio interference

