

Personal Gas Detector

Continuously monitoring the atmosphere for dangerous levels of Oxygen, Methane, Hydrogen Sulphide and Carbon Monoxide, this gas detector features both audible and visual alarms.



EQUIPMENT CARE

Never push the equipment beyond its design limits. If it is unsuitable for the task you are performing DO NOT USE OR RELY ON IT. Contact your local HSS Hire for advice.

Handle the equipment with care. Avoid dropping, knocking or otherwise exposing it to damage. If the unit is exposed to potential contaminants such as silicone, leaded petrol, halogens, antimony or oxygen levels above 21%, return it to your local branch of HSS Hire for re-calibration.

Keep the equipment clean. You will find this less of a chore if you clean up regularly, rather than wait until the end of the hire period. Only use a cloth dampened with water to clean the instrument.

When not in use, store the equipment in its carrycase, somewhere clean, dry and safe from thieves.

FINISHING OFF

To turn the instrument off, press and hold the (red) button for three seconds, until it switches off. Make sure all components are present. Give the unit a thorough clean before replacing it with the charger and line in its carry-case, ready for return to your local branch of HSS Hire.

... have you been trained

The law requires that personnel entering Confined Spaces using gas detectors must be competent and qualified to do so. Gas Detector and Confined Space training available at HSS Training Solutions. **0845 766 7799**

...any comments?

If you have any suggestions to enable us to improve the information within this guide please e-mail your comments or write to the Safety Guide Manager at the address below **e-mail: safety@hss.com**



©HSS Hire Service Group Ltd 2007 No. SS041/01 Group Office: 25 Willow Lane, Mitcham, Surrey CR4 4TS

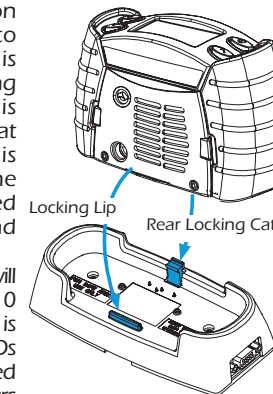
Web Site: <http://www.hss.com>

TECHNICAL SPECIFICATIONS

Sensors:	Range	Repeatability	Response time T ₉₀
Methane	0 to 100% LEL	± 3% LEL	<15s
Oxygen	0 to 25%v/v	± 0.3%v/v	15s
Carbon monoxide	0 to 500 ppm	± 12.5 ppm	25s
Hydrogen sulphide	0 to 50 ppm	± 2.5 ppm	25s
Visual alarm	4 Hi-intensity red LEDs, 2 Hi-intensity green LEDs for confidence signal.		
Audible alarm	85dBA at 1m (90dBA at 1ft)		
Display	Large backlit graphical liquid crystal display		
IP Rating	Instrument IP67 (NEMA 4X), cartridge IP54 (NEMA 4)		
Operating Temperature	-20°C to 55°C		
EMC approvals	EN50270		
Battery	NiMH rechargeable, operating life > 10 hours Charge Time = 7 Hours Dry cell disposable, operating life > 17 hours		

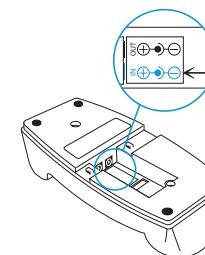
MAINTAINING POWER SOURCES

Portable Four Gas Detector is supplied with rechargeable battery. To charge the battery, ensure that the basestation is connected to a suitable power source. Place the instrument in the basestation. The basestation employs a locking system to ensure that the gas detector is retained under most operating conditions. To ensure this operates correctly, ensure that the gas detector is orientated such that the instrument lip will be inserted under the locking lip and rear locking catch.



Whilst charging, the instrument will flash two red LEDs every 10 seconds. When charging is complete it will light the green LEDs constantly. A fully discharged battery will typically require 7 hours to recharge. To remove the Gas Detector press down on the rear locking catch.

Ensure the DC power supply adaptor is connected to the 'IN' socket on the underside of the basestation.



WARNING
Do not charge the battery pack in a hazardous area

Warning Codes

Number	Message	Action or Reason
8	Replace batteries	Battery unchargeable. Replace the battery pack..
9	Cartridge expired	Contact HSS Hire.
10	Cartridge expires in nn days	Contact HSS Hire.
11	Calibration due	Calibration is due soon. Recalibrate or fit new cartridge.
14	Battery low	Recharge the battery or fit new battery pack.
19	Passed install by date	Cartridge has exceeded its storage life. Fitting cartridge will reduce lifetime of cartridge.
20	See manual	Cartridge not being activated. Contact HSS Hire.
24	Please recharge or replace batteries	Insufficient battery voltage to operate the Enforcer. Recharge battery or replace the battery pack.
25	Calibration required	Recalibrate or fit new cartridge.
26	See manual	Operating temperature specification exceeded. Operate instrument within its specification.
31	Event log nearly full. Clear log to reset	20% or less remaining. When full the instrument will start overwriting the old data. Contact HSS Hire if the downloaded log is required.
32	Gas log nearly full. Clear log to reset	20% or less remaining. When full the instrument will start overwriting the old data.

Fault Codes

Number	Message	Action or Reason
12	Check batteries	Mixed battery types, i.e. one dry cell, one rechargeable. Fit two of the same type.
13	Battery empty. Check batteries	Battery too low to operate instrument. Recharge battery or fit new battery.
23	Switch on/off to reset	Caused by an unexpected switch off, e.g. poor or intermittent battery contacts. Switch off instrument and switch on again.
51	Calibration required	Cell is producing an excessive negative reading. Recalibrate
53	Calibration required	Flammable sensor has been exposed to more than 100ppm H ₂ S. Recalibrate
54	Low O ₂ - flam inaccurate	Insufficient for Flammable sensor to operate accurately. Recalibrate or fit new cartridge.
104	Switch on/off to reset	Oxygen cell fault. Recalibrate or fit new cartridge.
105	Switch on/off to reset	Flammable cell fault. Possible Flammable fuse broken. Recalibrate or fit new cartridge.
106	Switch on/off to reset	Toxic 1 cell fault.. Recalibrate or fit new cartridge.
107	Switch on/off to reset	Toxic 1 cell fault.. Recalibrate or fit new cartridge.

Any alarm will cause the backlight to be switched on automatically.

Latching Alarms (default)

In the latched condition, once an alarm occurs, both audible and visual alarms continue to operate even after atmospheric hazard has cleared. Pressing any of the instrument buttons will clear an alarm. Any subsequent alarm will reactivate the audible and visual alarms.

Non-latching Alarms

In this mode, should a gas alarm occur, the instrument would enter an alarm condition. When the reading returns to normal levels, the audible and visual alarms will stop.

Vibrating Alarm

Any alarm condition that activates the audible and visual alarms will also activate the built-in vibrating alarm.

Resetting an Alarm

If an alarm condition occurs, it is possible to cancel the alarm by pressing any of the buttons, once the gas measurements have returned to a safe level. Otherwise, the instrument will remain in the alarm condition, but the audible alarm will be muted. Any subsequent alarms that occur 1 second after the previous alarm has been reset will reactivate the audible alarm.

Fault & Warning Conditions

In addition to the gas alarms, the gas detector includes a number of auxiliary alarms to safeguard proper use of the instrument. At switch on, the gas detector performs an electronic self-test that assures the user of proper performance. When the gas detector detects that an electric fault or failure condition has occurred, the audible and visual alarms are activated and an explanatory message will be displayed.

CAUTION

As the gas detector is designed to protect from potentially life-threatening atmospheric conditions, any alarm conditions must be taken seriously.

WARNING

Code - 0
See manual

The instrument displays a warning message for situations where a fault or error has occurred but may be resolved by the user.

See the **Warning Codes** in the table

