

HiTi Photo Printer
Mug Heat Press Kit
User Manual

ACKNOWLEDGEMENTS

Microsoft, MS, MS-DOS and Windows are registered trademarks of Microsoft Corporations.

Pentium is a U.S. registered trademark of Intel Corporation.

TrueType is a U.S. trademark of Apple Computer, Inc.

Adobe and Acrobat a registered trademarks of Adobe Systems Incorporated.

Brands and product names are trademarks or registered trademarks of their respective companies.

COPYRIGHT

The information contained in this document is subject to change without notice.

Hi-Touch Imaging Technologies makes no warranty of any kind with regard to this material, including, but not limited to, the implied warranties of merchantability and fitness for a particular purpose.

Hi-Touch Imaging Technologies shall not be liable for any errors or for incidental or consequential damages in connection with the furnishing, performance, or use of this material.

Reproduction, adaptation, or translation of this manual is prohibited without prior written permission of Hi-Touch Imaging Technologies, except as allowed under the copyright laws.

Hi-Touch Imaging Technologies, HiTi, HiTi company logo, PhotoDesiree, "Digital mini-lab just for you", HiTi name (written in Simplified Chinese or Traditional Chinese), are trademarks or registered trademarks in Taiwan, China and other countries of Hi-Touch Imaging Technologies.

SAFETY INSTRUCTIONS

1. Read these instructions carefully. Save these instructions for future reference. Follow all warnings and instructions marked on the product.
2. Unplug this product from the wall outlet before cleaning. Do not use liquid cleaners or aerosol cleaners. Use a damp cloth for cleaning.
3. Do not use this product near water.
4. Do not place this product on an unstable cart, stand, or table. The product may fall, causing serious damage to the product.
5. Openings in the cabinet and the bottom are provided for ventilation; to ensure reliable operation of the product and to protect it from overheating, these openings must not be blocked or covered. Placing the product on a bed, sofa, rug, or other similar surface should never block the openings. Their products should never be placed near or over a radiator or heat register, or in a built-in installation unless proper ventilation is provided.
6. This product should be operated from the type of power indicated on the marking label. If you are not sure of the type of power available, consult your dealer or local power company.
7. If an extension cord is used with this product, make sure that the total ampere rating of the equipment plugged into the extension cord does not exceed the extension cord ampere rating. Also, make sure that the total rating of all products plugged into the wall outlet does not exceed the fuse rating.
8. Do not attempt to service this product yourself, as opening or removing covers may expose you to dangerous voltage points or other risks. Refer all servicing to qualified service personnel.

FCC INFORMATION

The Federal communication Commission Radio Frequency Interference Statement includes the following paragraph:

This equipment has been tested and found to comply with the limits for a Class B Digital Device, pursuant to Part 15 of the FCC Rules. These limits are designed to provide reasonable protection against harmful interference in a residential installation. This equipment generates, use and can radiate radio frequency energy and, if not installed and used in accordance with the instruction, may cause harmful interference to radio communication. However, there is no guarantee that interference will not occur in a particular

installation. If these equipment doses cause harmful interference to radio or television reception, which can be determined by interference by on or more of the following measures:

1. Reorient or relocate the receiving antenna.
2. Increase the separation between the equipment and receiver.
3. Never push objects of any kind into these products through cabinet openings as they may touch dangerous voltage points or short out parts that could result in a fire or electric shock. Never spill liquid of any kind on the product.
4. Connect the equipment into an outlet on a circuit different from that to which the receiver is connected.
5. The users should not modify or change this equipment without written approval from this company. Modification could void authority to use this equipment.



FEDERAL COMMUNICATIONS COMMISSION

Declaration of Conformity (DoC)

The following equipment:

Product Name : MUG HEAT PRESS

Trade Name : HITI

Model Number : 116N

is herewith confirmed to comply with the requirements of FCC Part 15 Rules.

The operation is subject to the following two conditions:

- (1) This device may not cause harmful interference, and
- (2) This device must accept any interference received, including interference that may cause undesire operation.

The result of electromagnetic emission has been evaluated by ETC EMI

Laboratory (NVLAP LAB CODE:200133-0) and showed in the test

report: ET92R-03-017-01

It is understood that each unit marketed is identical to the device as tested, and any changes to the device which could adversely affect the emission characteristics will require retest.

The following importer/manufacture is responsible for this declaration:

Company Name : Hi-Touch Imaging Technologies (America), Inc

Company Address : 945 S. Greenwood Ave. STE J Montebello, CA 90640, USA

Telephone : +1-323-728-9900 Facsimile : +1-323-728-9980

Person in responsible for marking this declaration:

PAI-YI CHIEN General Manager

Name (Full Name) Position/Title

Pai Yi Chien JUN 03 2003

Legal Signature) Date

自我符合宣告書請依上述文件製作

宣告者須在美國當地，故所填之公司地址、電話、傳真必須是在美國當地。

FCC Doc Label 樣本參考

一般產品或系統標示如下

CPU Board 或 Power Supply 標示如下

Trade Name	Model Number
	Tested To Comply With FCC Standards
FOR HOME OR OFFICE USE	

Trade Name	Model Number
	Assembled From Tested Components (Complete System Not Tested)
FOR HOME OR OFFICE USE	

CE Declaration of Conformity

For the following equipment:

Mug Heat Press 116N (Brand: HiTi)

is herewith confirmed to comply with the requirements set out in the Council Directive on the Approximation of the Laws of the Member States relating to Electromagnetic Compatibility (89/336/EEC). For the evaluation regarding the electromagnetic compatibility, the following standards were applied:

EN 55022:1998(Class B)	IEC 61000-4-3:1996/A1:1998/A2:2000
EN 61000-3-2:1995/A1/A2:1998/A14:2000	IEC 61000-4-4:1995/A2:2000
EN 61000-3-3:1995/A1:1998	IEC 61000-4-5:1995/A2:2000
EN 55024:1998	IEC 61000-4-6:1996/A2:2000
IEC 61000-4-2:1995/A1:1998/A2:2000	IEC 61000-4-8:1993/A1:2000
	IEC 61000-4-11:1994/A2:2000

The following importer/manufacture is responsible for this declaration:

Hi-Touch Imaging Technologies
Netherlands BV

(Company Name, Importer)

Goudenhevel, 13, 5234 GA,
's-Hertogenbosch, The Netherlands

(Company Address, Importer)

Person responsible for this declaration:

Mike Yang

(Name, Surname, Importer)

General Manager

(Position/Title)

(Legal Signature)

The Netherlands MAY. 01, 2003

(Place)

(Date)

Hi-Touch Imaging Technologies
(Suzhou) Co., Ltd.

(Company Name, Manufacturer)

No. 18 QunXing Rd. One Suzhou Industrial
Park, Suzhou 215006 P.R. China

(Company Address, Manufacturer)

Person responsible for this declaration:

Alan Yao

(Name, Surname, Manufacturer)

Associate Vice President

(Position/Title)

(Legal Signature)

China MAY. 01, 2003

(Place)

(Date)

Chapter 1. Welcome

1-1 Our Invitation to HiTi Photo Printer Family

It is our pleasure to have you onboard as the member of HiTi Photo Printer family. We thank you for your patronage and hope this is just the beginning of our long-term association. Through our printer, picture will be transformed into masterpieces. HiTi Photo Printer offers tremendous creativity; digital age will become full of wonderful memories and treasures.

- LCI
sec

cover design,

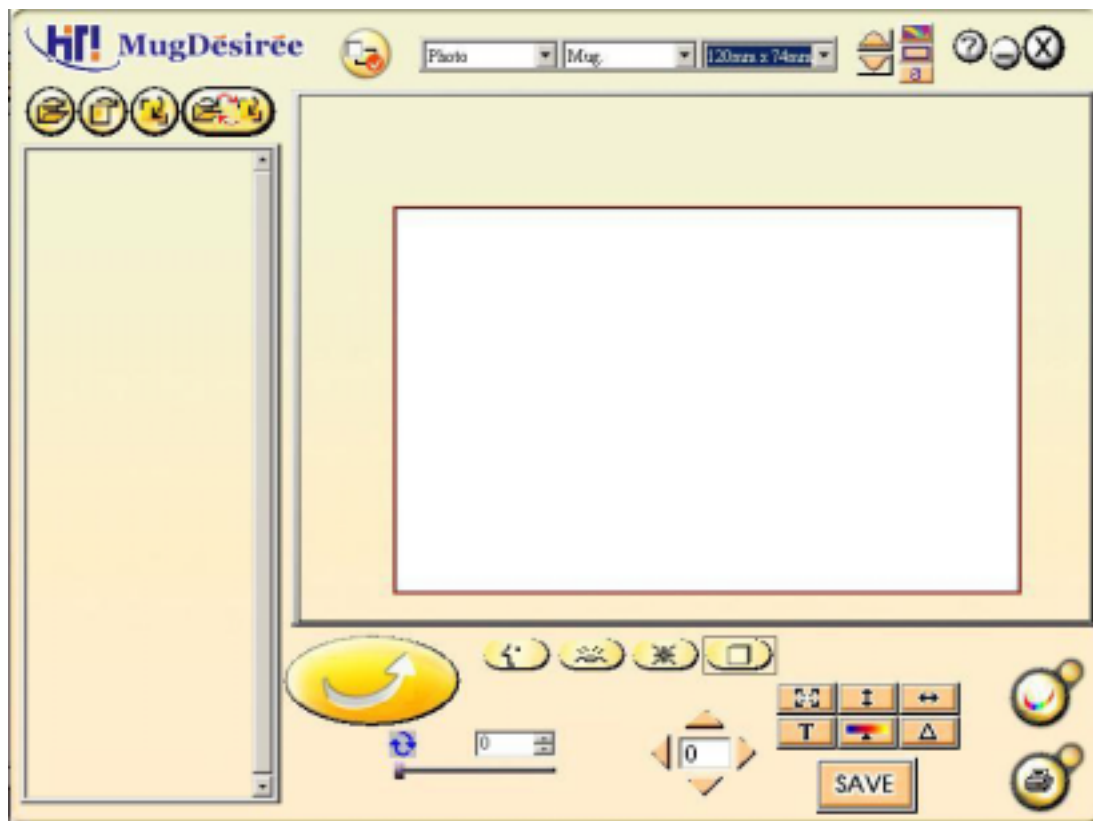


- Patented design Bubble Eliminator to eliminate all potential air pockets while heating



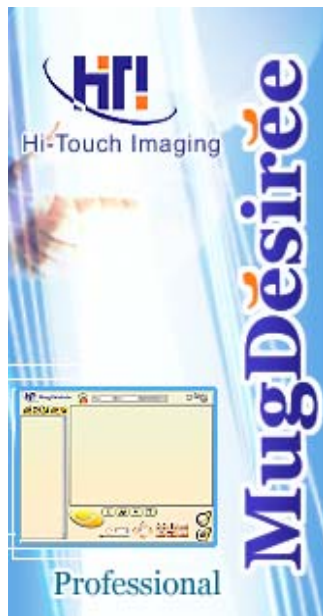
2-2 Other Features

- Professional Locating coil design ,accurate for locating.Dual temperature sensor and plastic cover design, secure and accurate for useAutomatic power-off design while abnormal activities appearBundled software , MugDesiree ,to provide solution for Mug personalization



Chapter 2 MugDesiree Introduction

2-1. Mug Desiree Installation:



To Install:







1. Insert MugDesiree CD into CD-ROM
2. If CD-ROM does not auto start, please click Start/Run and type D:\SETUP.EXE (where "D" is your CD-ROM drive.)
3. Click OK. Follow the instructions on the screen.

To start :

1. Click Start/Programs. Go to the HiTi folder, select the MugDesiree folder and click MugDesiree

2-2. Operation Procedure



1. Select Start\Programes\HiTi\HiTi\HitiMug\ MugDesiree or double-click  to run MugDesiree
2. Press  button and import the images from computer
3. Press  button and import images from HiTi printer
4. Press  button and import templates from computer. You can edit the template format such as rotate, color setting as the step 10-14.
5. Press  button and switch the file browser mode and templates browser mode
6. MugDesiree will automatically adjust any poor quality images if you set a mark in .
7. You can select HiTi default setting , HiTi provides three kind of layout as in illustration (a),(b),(c)

(a) 99mm x 74mm



(b) 120mm x 74mm

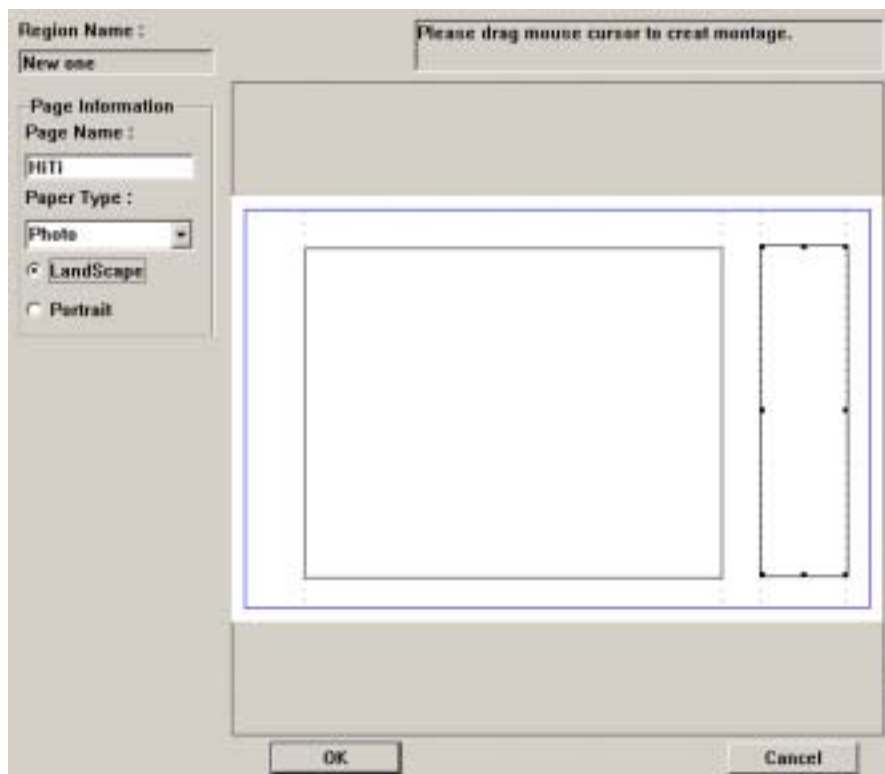



(c) 51.5mm x 74mm




Or you can edit your own layout format as in illustration (d)


(d)



8. After picking desire print layout, press  button to import the image/templates into designated picturing area.




9. The edit area is composed of three different layers, image , template and text layer, which could be edited separately. You could switch to different layers by use .

—Image layer



—Template layer


—Text layer

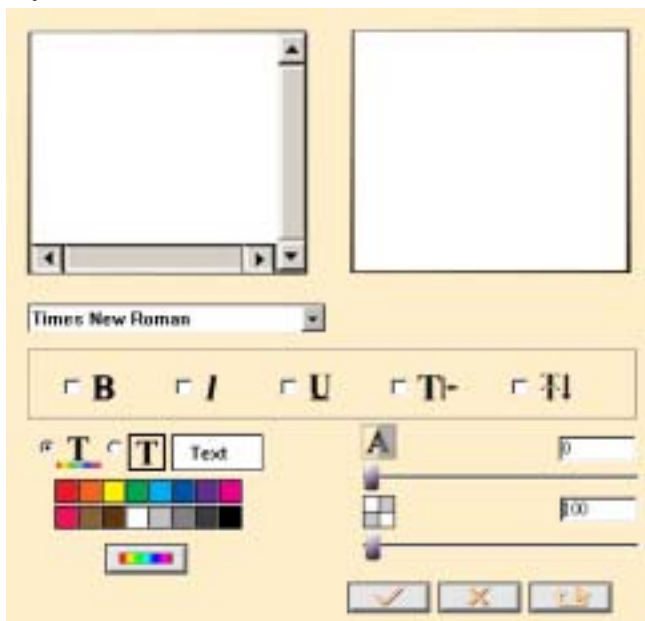
10. Use , , and  buttons to adjust the size of the image /template within picturing area.


	Fits the image /template vertically to the height.
	Fits the image /template horizontally to the width.
	Prompts an image/template size window for user to custom defines width, length, and pixel.

11. Use  and  buttons to adjust the color effect

	Change the color by increasing or decreasing the color balance or brightness of the entire photo.
	Increase or decrease the sharpness of the entire photo.

12. Use  button for text editing screen which allows you to input and adjust text



13. Use  to adjust the location of the image.

14. Use   button for image rotation.

15. MugDesiree also provides the four different effects that can be display when the image is imprinted onto the ceramic mug. The four effects are: Normal, Landscape, Portrait, and Artistic.



---Portrait, this will enhance the imprinted people image on the mug.



---Landscape, this will increase the color saturation imprinted on the mug.




---Artistic, this will double the color saturation imprinted on the mug.
"Artisitc' effect is good if image is text or logo.



---Normal, the imprinted image on the mug is the same as the original image.

// The effect wasn't directly apply on the screen, you could see the effect after the

Mug was finished //

16. Use , you can save the result of this editing.

17. Page color setting and Print

	Increase or decrease the gamma of the image to achieve the optimal color balance when image is transferred onto the ceramic mug.
	Print out the image.

Chapter 3 Mug Heat Press

Standard Operation Procedure

1. You should have the following tools in hand: Mug Heat Press, Bubble Eliminator, White Ceramic Mug, Mug Locating Tape, Dye Sublimation Photograph, Mug Locating Coil, Clean Towel (recommend polyester fabric), a pair of gloves and a bottle of methane,



2. Pour an equivalent of 1 teaspoon of methane into the polyester fabric. Carefully wipe the surface and remove any dirt or dust from the white ceramic mug.



Useful Tips:

- (1). Use only the photograph that is just been printed out for mug imprint!
- (2). Gently remove any dust from photograph and ceramic mug.
- (3). Use methane to clean the surface to avoid any dust been left out.
- (4). Avoid direct finger contact with mug and photograph surface.

3. Place the white ceramic mug into the mug locating coil. Align the mug holder with the mug locating coil as illustrated below,



The zero of locating coil

Useful Tips:

- (1). Carefully cutting off excessive margin on top of photography
- (2). Place mug inside locating coil. The bottom of the mug should be in parallel with locating coil
- (3). Left and right side of photograph should be in parallel with the edge of locating coil
- (4). Avoid any gap between mug and photography

4. Wrap the Dye Sublimation Photography on the mug with the image facing the mug and the bottom of photography is just above the mug locating coil



5. Use mug locating tape to secure the photo onto the mug's surface.



Useful Tips:

- (1). Remain the opposite position between photo and Mug surface, before sticking the tape
- (2). Remove locating coil after photograph is firmly taped on mug

6. Place the mug up side down on the Bubble Eliminator with the mug holder facing outward



7. Push the adjuster to tighten the mug against the plastic roller. With hand holding the mug holder, rotating the mug counter-clockwise to squeeze any air between the mug and the photo.



Useful Tips:

- (1). Ensure no gap between photography and mug while using bubble eliminator to squeeze out air pocket
- (2). Tape the mug when bubble eliminator
- (3). Use finger to press the wrinkle while wrinkle appears during air pocket removing.

8. Use mug locating tape to secure another side of the photo onto the mug's surface.



9. Hold on the mug holder and release the adjustor. Remove the mug from the Bubble Eliminator.



10. Place the mug in Mug Heat Press wrapper. Hold on the mug holder and tighten the space between mug and the wrapper.

<WARNING! Avoid the contact between plastic cover and mug handle)

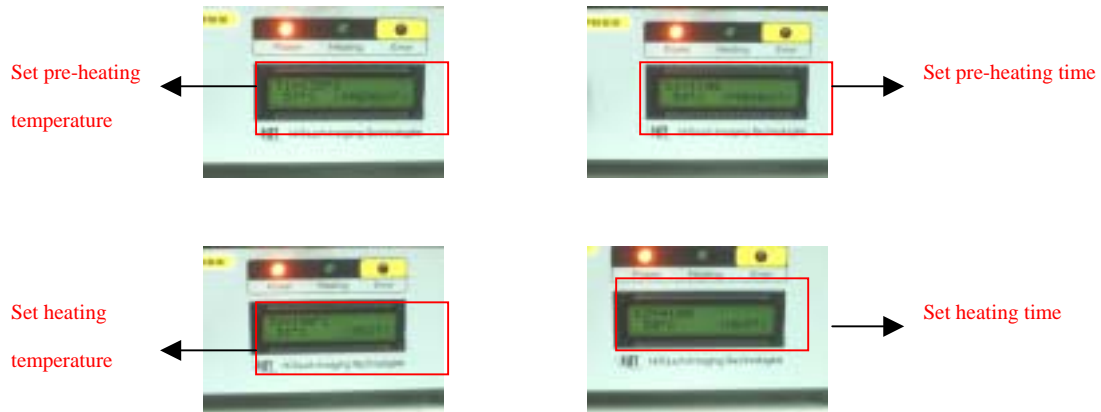


ATTENTION ! Do not place the mug upside down

11. Flip down the plastic cover



12. Select <RUN> and press OK, an the default setting would be applied for the heating process (the default pre-heating time/temperature is 1 min/ 130°C and the default heating time/temperature is 4 min/ 150°C) You can also select <Setting> , to adjust pre-heating time/ pre-heating temperature/ heating time/ heating temperature. Then press “Start” to begin



13. When pre-heating process is completed, machine automatically stops. Press “OK” button to stop the alert tones, release the holder, and proceed to Bubble Eliminator process.



OK



Useful Tips:

- (1). If smokes comes out from Mug Heat Press machine during the pre-heating phase, this is caused by the water in the silicon is evaporating.
- (2). A “Da, Da” will sound on machine if temperate reaches pre-heating temperature of 130°C,

14. Push the adjustor to tight on the mug against the plastic roller. With hand holding the mug holder, rotate the mug counter-clockwise and clockwise to squeeze any air between the mug and the photo.



Useful Tips:

- (1). Start to bubble elimination process immediately after pre-heating process in order to have the best result
- (2). Start from the center of the photography to eliminate the bubble. Rotate clockwise and counter-clockwise 5 times
- (3). Please wear a pair of glove to avoid burning

15. Hold on the mug holder and release the adjustor. Remove the mug from the Bubble Eliminator.

16. Place the mug in Mug Heat Press wrapper. Hold on the mug holder and tighten the space between mug and the wrapper. Press “OK” button to continue the heating process again



Useful Tips:

- (1). Due to silicon is been heating and it will increase the pressure to hold down the lever. Please lose the lever knot to release the pressure.
 - (2). Press and hold down the lever to ensure the imprint quality
17. When heating process is completed, machine automatically stops. Press “OK” button to stop the alert tones, hold on the mug holder, and take out the mug from wrapper with extreme care.
- <CAUTION! DO NOT TOUCH THE SURFACE OF MUG. IT IS EXTREMELY HOT>



18. Wait until the temperature of mug cools down, then remove the mug locating tape.



Useful Tips:

- (1). Peel the photo off immediately while heating completed, can get ultimate output.
- (2). Avoid burning from touching, please wear glove.
- (3). Avoid double-image, don't stick the photo on the mug again.
- (4). A photo only can transfer one Mug

19. The whole heating process is completed. You can stop or start from the beginning and repeat the whole procedure to create a new personalized mug.



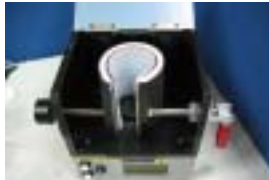
Note:

Smokes may come out from the Mug Heat Press during the heating process. The phenomenon is normal due to the water is been evaporating during the heating process.

Chapter 4 Consumable Replacement

4-1 Heater Plate Replacement

1 Turn off the power and wait for 20 minutes for machine to cool down



2 Take out the white tefton and black rubber

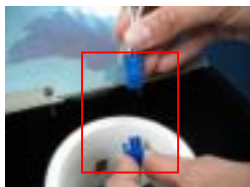


3. Pull the heater plate from machine, you will see a semi- sphere hole where a wire is connecting with heater plate.



Semi-sphere hole

4. Disconnect the heater plate from the wire.

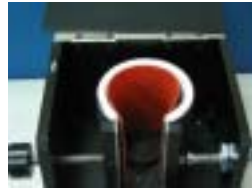


5. Make sure the wire and the new heater plate is properly reconnected.



6. Put the connector through the semi-sphere hole and put the heater plate into the original location. Then put the black rubber and white Teflon onto the machine.

Make sure the heater plate , black rubber and white silicon are wrapped by white Teflon. Then push the white Teflon into the original location.



7. Completion of heater plate replacement

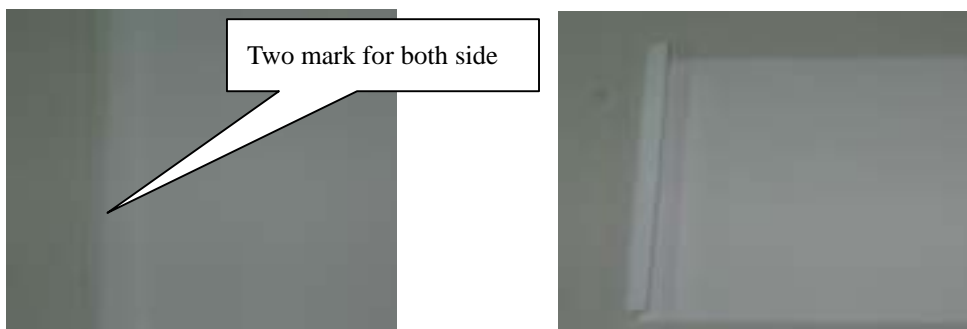


110V and 120V : Blue line
220V and 220V : White line

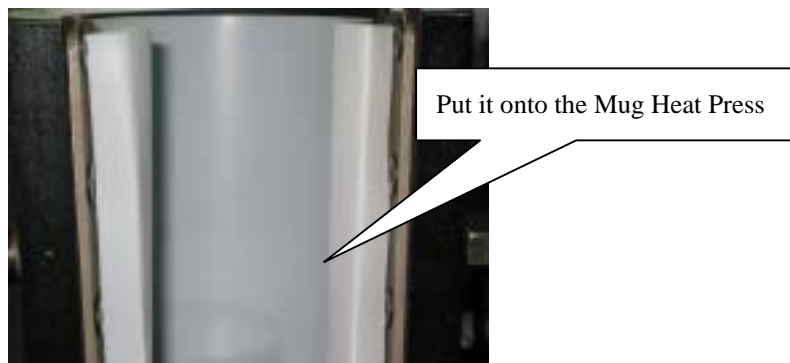
4-2. Teflon Replacement

// The white Teflon on the surface of the heater plate is used for improving the image transferring effect onto the mug. If you find any cracks on the surface of the Teflon, please contact your local distributor and replace the Teflon according to the following procedure. //

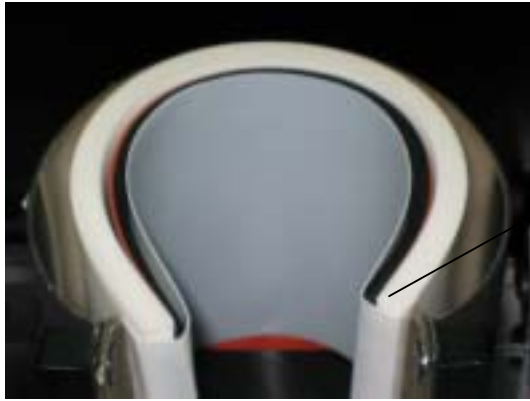
1. Take out the cracked Teflon.
2. Use new Teflon, and fold the two sides along the folding lines. (The folding lines should be vertical to each other as the following illustration.)



3. Put the Teflon inside the mug heat press as illustrated below.

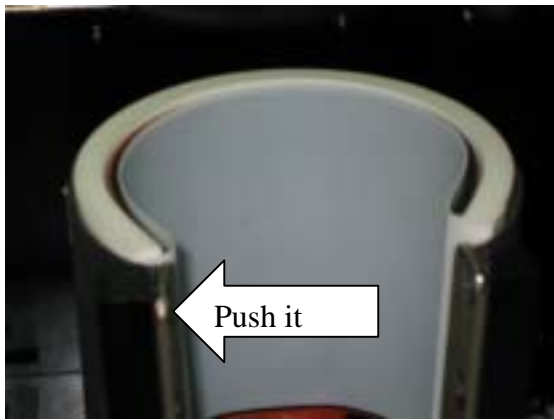


4. Wrap up the U part on both sides of the white Teflon to cover the white silicon, the orange heater plate, and the black rubber as illustrated below.



Cover the white, orange and black components.

5. Insert the Teflon into the embracer as the following illustration.



6. The new Teflon replacement is completed.



Chapter 5 Useful tips for Mug Heat Machine Maintenance

Erros Message displays on LCD	Action Taken
COVER OPEN	Flip down the plastic cover and press OK
OVER HEAT	Press OK and turn off the power first and then turn it back on
ADC FAILS	<ol style="list-style-type: none"> 1. Turn off the power first and then turn it back on 2. Check if the connection is loose between heating pad and wire 3. Replace the heating pad if above steps fail to solve the problem.
TC0 FAILS	Turn off the power first and then turn it back on
TC1 FAILS	Turn off the power first and then turn it back on
TCx FAILS	Turn off the power first and then turn it back on
NO MUG	Place the mug in the proper position and press OK
TIME UP	Press OK and turn off the power first and then turn it back on

If you are still unable to make the machine function properly, please contact local distributor or regional HiTi offices,

Region	E-mail	Tel
Taiwan	csd@hi-ti.com	886-2-8258-3060
Mainland China	csd@hi-ti.com	86-512-6760-1688
USA	service@hitouchimaging.com	1-323-728-9900
Europe	sales@hi-ti.nl	31073-6450897
Others	csd@hi-ti.com	886-2-8258-3060