



WARNING!

Do not switch on
for the first time
without first
filling with oil.

40L & 50L VERTICAL DIRECT DRIVE AIR COMPRESSORS

EVAC40 & EVAC50
INSTRUCTION MANUAL



GMC®

GLOBAL MACHINERY COMPANY

Black	Magenta	Code: EVAC40/50 IM		
Cyan	Yellow	Date: 070912	Edition: 6	Op: DCR

用本处所有显示的颜色打印包装资料。Print artwork using ALL inks shown here.

Contents

Warranty	2
Warning labels explained	3
Introduction	4
Environmental protection	4
Description of symbols	4
Specifications	4
General safety instructions	5
Additional safety rules for air compressors	6
Contents of carton	7
Know your product	8
Unpacking	9
Assembly	9
Pre-start routine	10
To start & stop the compressor	10
Operation	11
Troubleshooting	12
Maintenance	14
General inspection	15
Cleaning	15
Power cord maintenance	15

Warranty Power Tools

Whilst every effort is made to ensure your complete satisfaction with this tool, occasionally, due to the mass manufacturing techniques, a tool may not live up to our required level of performance and you may need the assistance of our service department.

This product is warranted for a 2-year period for home domestic use from the date of the original purchase. If found to be defective in materials or workmanship, the tool or the offending faulty component will be repaired or replaced free of charge with another of the same item. A small freight charge may apply. Proof of purchase is essential. We reserve the right to reject any claim where the purchase cannot be verified.

This warranty does not include damage or defects to the tool caused by or resulting from abuse, accidents, alterations or commercial or business use. It also does not cover any bonus items or included accessories. Only the power tool is covered under this warranty.

With continuing product development, changes may have occurred which render the product received slightly different to that shown in this instruction manual.

Please ensure that you store your receipt in a safe place. Conditions apply to the above warranty. For full details of the warranty terms and conditions please refer to our website – www.gmcompany.com

For prompt service we suggest you log your service request online - www.gmcservice.com.au, should you not have access to the internet, please contact our service department on 1300 880 001 (Australia) or 0800 445 721 (New Zealand).

Warning labels explained

On the tank of your air compressor you will notice various warnings about the operation of the compressor. These warnings and the procedures associated with them are explained fully in this manual on the following pages.

Please take note of these. They are important for your safety and that of others in the vicinity.

 <p>WARNING!</p> <ul style="list-style-type: none">• Do not switch on without first checking the oil level and, if required, filling with oil.• Always turn the compressor off at the On/Off switch on the compressor before turning off at the power supply.	 <p>WARNING!</p> <p>Unit starts automatically.</p> <p>Switch off power supply, remove plug & relieve air pressure prior to commencing service tasks.</p>	 <p>OIL LEVEL</p> <p>Check the oil level before starting the compressor every time.</p> <p>Make sure the compressor is on a level surface prior to checking the oil level.</p> <p>The oil level is required to be at the red dot on the oil level sight glass prior to use.</p> <p>Use only oil grade specified in the instruction manual.</p>	 <p>TANK DRAIN</p> <p>To prevent build-up of condensation, open drain cock daily.</p> 	
 <p>AIR INLET FILTER</p> <p>When filter becomes dirty or oily, clean or replace filter. Refer to instruction manual.</p>	 <p>OPERATING</p> <p>Read instruction manual prior to starting unit.</p> <p>This equipment operates from AC mains only.</p>	 <p>DANGER!</p> <p>High voltage used on this equipment. Prior to servicing or removing the cover, switch off the power supply & remove plug from mains. Ensure mains outlet is adequately rated for this unit.</p>	 <p>WARNING!</p> <p>Air discharged from this unit is not suitable for human consumption.</p>	 <p>WARNING!</p> <p>Test the safety relief valve daily.</p> <p>Refer the instruction manual.</p>

Introduction

Your new GMC power tool will more than satisfy your expectations. It has been manufactured under stringent GMC Quality Standards to meet superior performance criteria.

You will find your new tool easy and safe to operate, and, with proper care, it will give you many years of dependable service.

CAUTION. Carefully read through this entire Instruction Manual before using your new GMC Power Tool. Take special care to heed the Cautions and Warnings.

Your GMC power tool has many features that will make your job faster and easier. Safety, performance, and dependability have been given top priority in the development of this tool, making it easy to maintain and operate.

Environmental protection



Recycle unwanted materials instead of disposing of them as waste. All tools, hoses and packaging should be sorted, taken to the local recycling centre and disposed of in an environmentally safe way.

Description of symbols

The rating plate on your tool may show symbols. These represent important information about the product or instructions on its use.



Wear hearing protection.

Wear eye protection.

Wear breathing protection.



N380

Conforms to relevant standards for electromagnetic compatibility.

Specifications

	EVAC40	EVAC50
Power:	2.4HP/1800W	
Voltage:	230–240V ~ 50Hz	
No load speed:	2850 min ⁻¹	2850 min ⁻¹
Discharge pressure:	0.8 MPa(115 psi)	0.8 MPa(115 psi)
Tank capacity:	40 litres	50 litres
Air outlet size:	6.35 mm (1/4")	6.35 mm (1/4")
Net weight:	37.5 kgs	40 kgs
Cut-in pressure (factory set):	0.6MPa (85psi)	
Cut-out pressure (factory set):	0.8MPa (115psi)	
Maximum output pressure:	0.8MPa (115psi)	
Free air delivery:	155 l/min (5.5 CFM)	161 l/min (5.7 CFM)
Pump displacement:	232 l/min (8.2 CFM)	273 l/min (9.6 CFM)

General safety instructions

To use this tool properly, you must observe the safety regulations, the assembly instructions and the operating instructions to be found in this Manual. All persons who use and service the machine have to be acquainted with this Manual and must be informed about its potential hazards. Children and infirm people must not use this tool. Children should be supervised at all times if they are in the area in which the tool is being used. It is also imperative that you observe the accident prevention regulations in force in your area. The same applies for general rules of occupational health and safety.

WARNING. When using power tools, basic safety precautions should always be taken to reduce the risk of fire, electric shock and personal injury. Also, please read and heed the advice given in the additional important safety instructions.

- 1. Keep the work area clean and tidy.** Cluttered work areas and benches invite accidents and injury.
- 2. Consider the environment in which you are working.** Do not use power tools in damp or wet locations. Keep the work area well lit. Do not expose power tools to rain. Do not use power tools in the presence of flammable liquids or gases.
- 3. Keep visitors away from the work area.** All visitors and onlookers, especially children and infirm persons, should be kept well away from where you are working. Do not let others in the vicinity make contact with the tool or extension cord.
- 4. Store tools safely.** When not in use, tools should be locked up out of reach.
- 5. Do not force the tool.** The tool will do the job better and safer working at the rate for which it was designed.
- 6. Use the correct tool for the job.** Do not force small tools or attachments to do the job best handled by a heavier duty tool. Never use a tool for a purpose for which it was not intended.
- 7. Dress correctly.** Do not wear loose clothing or jewellery. They can be caught in moving parts. Rubber gloves and non-slip footwear are recommended when working outdoors. If you have long hair, wear a protective hair covering.
- 8. Use safety accessories.** Safety glasses and earmuffs should always be worn. A face or dust mask is also required if the sanding operation creates dust.
- 9. Do not abuse the power cord.** Never pull the cord to disconnect the tool from the power point. Keep the cord away from heat, oil and sharp edges.
- 10. Secure the work piece.** Use clamps or a vice to hold the work piece. It is safer than using your hand and frees both hands to operate the tool.
- 11. Do not overreach.** Keep your footing secure and balanced at all times.
- 12. Look after your tools.** Keep tools sharp and clean for better and safer performance. Follow the instructions regarding lubrication and accessory changes. Inspect tool cords periodically and, if damaged, have them repaired by an authorised service facility. Inspect extension cords periodically and replace them if damaged. Keep tool handles dry, clean and free from oil and grease.
- 13. Disconnect idle tools.** Switch off the power and disconnect the plug from the power point before servicing, when changing accessories and when the tool is not in use.
- 14. Remove adjusting keys and wrenches.** Check to see that keys and adjusting wrenches are removed from the tool before switching on.
- 15. Avoid unintentional starting.** Always check that the switch is in the OFF position before plugging in the tool to the power supply. Do not carry a plugged in tool with your finger on the switch.
- 16. Stay alert. Watch what you are doing.** Use common sense. Do not operate a power tool when you are tired.
- 17. Check for damaged parts.** Before using a tool, check that there are no damaged parts. If a part is slightly damaged, carefully determine if it will operate properly and perform its intended function. Check for alignment of moving parts, binding of moving parts, breakage of parts, proper mounting and any other conditions that may

affect the operation of the tool. A part that is damaged should be properly repaired or replaced by an authorised service facility, unless otherwise indicated in this Instruction Manual. Defective switches must be replaced by an authorised service facility. Do not use a tool if the switch does not turn the tool on and off correctly.

18. Guard against electric shock. Prevent body contact with grounded objects such as water pipes, radiators, cookers and refrigerator enclosures.

19. Use only approved parts. When servicing, use only identical replacement parts. Use an authorised service facility to fit replacement parts.

Additional safety rules for air compressors

WARNING. Before connecting a tool to a power source (mains switch power point receptacle, outlet, etc.) be sure that the voltage supply is the same as that specified on the nameplate of the tool. A power source with a voltage greater than that specified for the tool can result in serious injury to the user, as well as damage to the tool. If in doubt, do not plug in the tool. Using a power source with a voltage less than the nameplate rating is harmful to the motor.

Always remove the plug from the mains socket before making any adjustments or maintenance, including renewing the lubricating oil.

- To reduce the risk of fire or explosion, never spray flammable liquids in a confined area. It is normal for the compressor motor and pressure switch to produce sparks during use. If sparks come into contact with petrol vapours or solvents, they may ignite the vapours and cause a fire or explosion.
- Always operate the compressor in a well ventilated area. Do not smoke while spraying. Do not spray where sparks or flames are present. Keep the compressor as far away from the spray area as possible.
- The solvents trichloroethane and methylene chloride can chemically react with the aluminium used in some paint spray guns and form an explosion. If these solvents are used, ensure that only stainless steel spray equipment is connected. The compressor is not affected by the use of these solvents.

- Never directly inhale the compressed air produced by a compressor and do not use it for charging breathing tanks.
- Do not use welding equipment in close proximity to the compressor. Do not weld anything to the air tank of the compressor: this could dangerously weaken the tank and will void the warranty.
- Do not use the compressor outdoors when it is raining or on a wet surface; either situation could cause an electric shock.
- Always shut off the compressor after use and before servicing. Set the on/off switch to the off position, wait for the pressurised air to bleed from the tank via drain cock located on the tank. Then remove the electrical plug from the power supply.
- Check the maximum pressure rating of any tools or accessories that you intend using with the compressor. The output pressure of the air from the compressor must be regulated so that it never exceeds the rated pressure of the tool or accessory.
- To avoid the risk of burns and injury from moving parts, do not operate the compressor with the safety cover removed. Allow hot parts to cool before handling or servicing.
- Be certain to read all the labels on the containers of paint or other materials to be sprayed. Closely follow all safety instructions. Use a respirator mask if there is a chance that you might otherwise inhale the spray material. Carefully check the effectiveness of any respirator mask you intend using.
- Always wear safety goggles or glasses when using the air compressor. Never point the nozzle of an accessory towards any part of your body or towards another person.
- Do not attempt to adjust the pressure switch or the release valve.
- Drain the moisture from the tank daily. It will help prevent corrosion.
- Pull the ring on the safety valve daily to ensure that it operating properly and to clear any possible instructions.
- Keep the compressor at least 300mm from the nearest wall to ensure adequate ventilation for cooling purposes.

- Prior to transporting the compressor make sure that the pressurised air is bled from the tank and that the compressor is firmly secured.

Note. Never transport pressurised tanks. Prior to transporting the air compressor make sure the tank has been completely drained of air.

- Protect the air hose and cordset from damage. Inspect for weak or worn spots regularly and replace if necessary.
- Do not use an extension cord with this product. Use additional air hose instead of an extension cord to prevent power loss and possible damage to the motor. Use of an extension cord voids the warranty.
- After long working periods external metal parts could be hot.
- Always shut off the compressor at the on/off switch by lifting the lever to the off position prior to switching off the power or removing the power plug.
- Check the oil level before starting the compressor every time.
- Make sure the compressor is on a level surface prior to checking the oil level.
- The oil level is required to line up with the red dot on the oil level sight glass prior to use.
- Use only oil grade specified in this instruction manual.

Note. The compressor is supplied empty of oil. It must be filled with oil before first use.

- After using the compressor, switch off the on/off switch, disconnect the power supply and open the outlet valve to release the pressure.
- Do not attempt to remove any part of the machine whilst it is under pressure.
- Ensure that the lubricating oil is clean and that the oil level is maintained at the correct level. Replace the oil as indicated in the Maintenance section of this Manual.
- Use safety equipment including safety goggles or shield, ear protection, breathing or respirator mask and protective clothing.

Wear goggles

Wear earmuffs

Wear a breathing mask

Never apply the outlet air of this compressor directly on to any part of a person's body. Do not attempt to block the air outlet with your finger or any part of your body.

The tool must be used only for its prescribed purpose. Any use other than those mentioned in this Manual will be considered a case of misuse. The user and not the manufacturer shall be liable for any damage or injury resulting from such cases of misuse.

The manufacturer shall not be liable for any changes made to the tool nor for any damage resulting from such changes.

Even when the tool is used as prescribed it is not possible to eliminate all residual risk factors. The following hazards may arise in connection with the tool's construction and design:

- Damage to the lungs if an effective breathing mask is not worn.
- Damage to hearing if effective earmuffs are not worn.
- Damage to the eyes if effective safety goggles or shield are not worn.

WARNING. In the event that an air line is cut or broken, the air supply must be turned off at the compressor. A broken air line which is not supported is extremely dangerous and can whip around very quickly, both with the capability of striking people, and blowing foreign particles into the air.

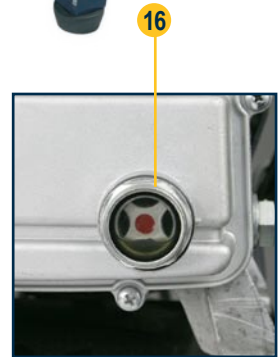
Do not attempt to catch the air line but immediately keep bystanders well clear and turn off the air supply to the hose, turn off the compressor at the On / Off switch, and then remove the hose from the compressor.

Contents of carton

- 400ml of oil in a sealed container
- Air filter
- Instruction manual
- Handle
- Wheel assemblies (x 2) (2 each of wheels, wheel bolts, nuts and washers)
- Rubber buffer (pre-assembled to tank)
- 1 X Allen key (required for assembly only)

Know your product

1. Handle
2. Pressure switch cover
3. On/off switch
4. Tank pressure gauge
5. Regulating knob
6. Regulated air outlet
7. Regulated outlet pressure gauge
8. Safety valve
9. Non-return valve
10. Drain cock
11. Air tank
12. Wheel (x 2)
13. Safety cover
14. Oil filling plug
15. Air filter assembly
16. Oil level glass
17. Air tap
18. Oil drain plug
19. Allen key for handle assembly



Unpacking

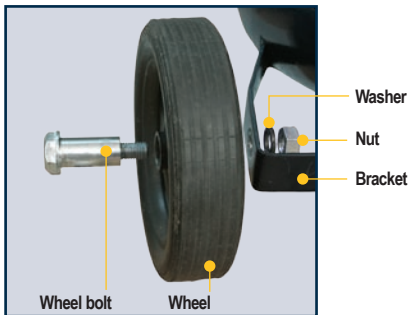
Due to modern mass production techniques, it is unlikely that your GMC Power Tool is faulty or that a part is missing. If you find anything wrong, do not operate the tool until the parts have been replaced or the fault has been rectified. Failure to do so could result in serious personal injury.

Assembly

Wheels

Fitting the wheels

Note. In order to fit the wheels the following supplied accessories are required:



1. To fit the wheels (12) first insert the wheel bolt through the wheel.
2. Fit the wheel assembly through the hole in the bracket under the tank.
3. Select one of the provided washers and nuts. Slide the washer onto the wheel bolt then proceed to screw on the nut.
4. Completely tighten the nut from the underside of the wheel with spanner while holding the outer side nut with another spanner.
5. Repeat for the second wheel.

Handle

The handle of the compressor must be fitted in the following manner:

Note. In order to fit the handle the following supplied accessories are required:



1. Insert the handle into the inside walls on the brackets which have been welded onto the tank.
2. Align the holes of the handle and the bracket.
3. Select one of the hex head bolts and one washers depicted above.

Slide the washer under the head of the hex head bolt and insert the assembly into one of the fixing holes.



Note. Make sure that the bolt slots through both the handle and the welded bracket holes.

4. Using your hands fit the nut to the threaded end of the bolt. Screw together until it is hand tight.
5. Repeat the above process for the remaining three holes.
6. Once all four bolts have been hand tighten select the provided Allen key and a spanner or socket and go over the four bolts, ensuring that they are tightly secured.



Oil

WARNING. The air compressor must be filled with oil before first use.

To prevent possible spillage of oil during transport, the compressor oil is supplied in a separate container. It must be added to the compressor before turning the compressor on. Failure to add the oil will cause non-repairable damage to the compressor and will void the warranty.

1. Remove the plastic oil filling plug (14) located on the top of the crank case of the compressor housing.



2. Use the oil supplied to fill the crank case until the oil level as seen in the oil level glass (16) is up to the mid point of the red circle.
3. Replace the oil filling plug (14). Ensure the plug is fully fitted and firmly in position.

Air filter

WARNING. The air filter must be added before use.

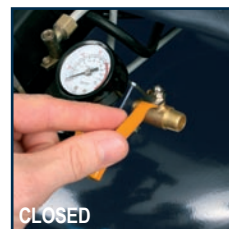
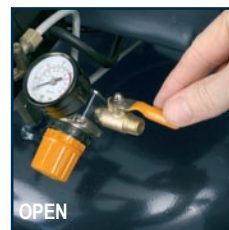
Failure to fit the air filter will damage the compressor and will void the warranty.

1. To fit the air filter (15) you need to locate the inlet hole on the right side of the compressor housing then carefully hand tighten the thread of the air filter in a clockwise direction until tight.



Pre-start routine

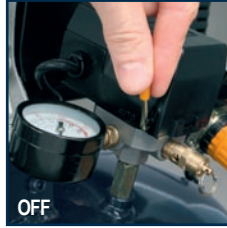
1. Ensure that the location for the compressor is clean, dry and well ventilated.
2. Ensure the crank case has been filled with oil and is at the correct level, and the air filter has been fitted.
3. Open the regulated output valve (6). Open the valve by rotating the air tap (17) so it is in line with the air outlet (refer to the OPEN picture). To close the valve, rotate the air tap so it is facing to the right or the left side of the air valve (refer to the CLOSED picture).
4. Start the compressor by following the procedure in the section "To start and stop the compressor". For the first time of operation, run the compressor for 10 minutes with no load and with the outlet valve open to ensure all parts are well lubricated.



WARNING. Be aware that pressurised air will be discharged from the outlet and care should be taken that this discharge is not directed towards you the operator, or other persons within the area.

To start & stop the compressor

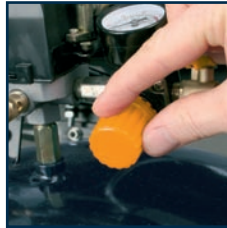
1. Check the rating label on the compressor indicates 230V–240V.
2. Plug in the mains cable of the compressor to a standard 240V household power point and turn on.
3. To start the compressor, push the On/Off lever (3) downward so that the lever is in the horizontal position.



4. To stop the compressor, lift the On/Off lever (3) to the vertical position.

Operation

1. The pressure in the tank is controlled by the action of the pressure switch located under the pressure switch cover (2). When the set maximum pressure is reached the pressure switch activates and the motor is switched off. The pressure then decreases as the air is used by the connected tool until the set minimum pressure is reached after which the pressure switch causes the motor to switch on again. The operator of the compressor should be well aware that during use of the compressor the motor will start and stop under the influence of the rising or falling pressure in the tank. The motor will start without any warning.
2. The maximum and minimum pressures are factory set and the operator should not try to change them.
3. All accessories are connected to the regulated air outlet (6).
4. The pressure of the regulated outlet, as shown on the regulated outlet pressure gauge (7), can be changed by turning the regulating knob (5).



Note. To obtain the correct output reading on the regulated output gauge, the air must be flowing through the outlet.

The regulating valve should be adjusted and the gauge read with the outlet valve open and the air being discharged from the regulated outlet through the accessory being used.

To increase the air pressure, rotate the regulating valve clockwise. To decrease the pressure, rotate the regulating valve anti-clockwise.

Note. If you do not allow the air to discharge while you are setting the regulator, the pressure as indicated on the regulated outlet gauge will be incorrect. This gauge ONLY indicates the correct pressure while air is being discharged from the outlet.

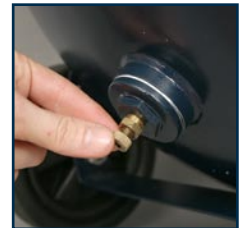
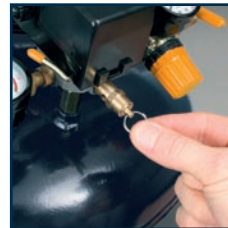
5. On completion of the task, i.e. when you have finished using the compressor, or when you are leaving the compressor unattended, turn off the compressor in the following way:

- Set the on/off lever (3) to the off position.
- Wait for the pressurised air to bleed from the release valve under the pressure switch cover (2).



Note. You may hear a short air discharge for approximately 1/2 a second. This discharge only occurs if the compressor is actually running at the time, and not in idle.

- Switch off the electrical power supply and remove the electrical plug.
- Pull the ring on the safety valve (8) to ensure all the pressurised air is released from the tank, or open the drain cock (10) to release the pressure from the tank. To open the drain cock (10) rotate the valve anti-clockwise and to close the valve rotate it clockwise.



WARNINGS.

1. Never attempt to remove any part of the compressor whilst the tank is under pressure.
2. Never attempt to remove any electrical component whilst the compressor is connected to the power supply. Switch off the power and remove the electrical plug.
3. Do not adjust the safety valve.
4. Do not use an electrical extension cable.
5. If the release valve under the pressure switch cover (2) fails to operate when the On/Off lever (3) is set in the off position, switch the power supply off and determine the nature of the fault.
6. Ensure that the lubricating oil is clean and that the oil level is maintained at the mid point of the red circle in the oil level glass (16).
7. Take care when discharging air from the tank, i.e. from the safety valve (8), the drain cock (10) or the air outlet (6). Compressed air can be extremely dangerous. Take care; make sure that the discharge air does not cause dust, stones or any other foreign particles to be blown through the air and that the air is discharged in a safe manner.

Troubleshooting		
Problem	Possible Cause	Suggested Remedy
Motor will not run, running too slow or becoming excessively hot	Power fault or supply voltage too low	Check the power supply. Do not use an extension cord with an air compressor. Make sure that the compressor is plugged directly into a 240V household power point and not an extension cord or power board.
	Faulty pressure switch	Use authorised service centre to repair or replace the switch
	Faulty motor	Use authorised service centre to repair or replace the motor
	Main compressor sticking/tight	Use authorised service centre to repair or replace faulty parts
Main compressor sticking/tight	Moving parts damaged by heat due to insufficient lubrication	Use authorised service centre to check crankshaft, bearings, con rod, piston rings, etc and replace where necessary
	Moving parts damaged or blocked by foreign particle	
Vibration or abnormal noise	Loose part	Use authorised service centre to check and repair if necessary
	Foreign body in main compressor	Use authorised service centre to check and clean if necessary
	Piston connecting with the valve seat	Use authorised service centre to increase size of gasket
	Moving parts excessively worn	Use authorised service centre to repair or replace

Troubleshooting continued

Problem	Possible Cause	Suggested Remedy
Insufficient pressure or decreased outlet capacity	Motor running too slow	Use authorised service centre to check and repair if necessary
	Dirty air filter cartridge	Clean or replace the filter cartridge
	Leaking safety valve	Use authorised service centre to repair or replace the switch
	Leaking pipe	Use authorised service centre to check and repair if necessary
	Damaged gasket	Use authorised service centre to check and repair if necessary
	Damaged or carbon coated valve seat	Use authorised service centre to check and repair if necessary
	Damaged piston ring or cylinder	Use authorised service centre to check and repair if necessary
	Open drain cock	Check the drain cock, make sure it is closed. If not immediately switch off the unit as per the shut down instructions and close the drain cock.
Air fittings leaking	Check all air fittings. Make sure that they are tight and not leaking at the joins. If a quick release fitting is leaking, disconnect it and reconnect it. If it continues to leak replace the defective fitting(s). If a male or female fitting is leaking around the thread tighten using a spanner. If the fitting is already tight and can't be tightened, unscrew the connection and remove the Teflon tape. Examine the condition of the fitting(s). If the a fitting(s) is damaged replace and reassemble using Teflon tape on threaded fittings. If the fittings are OK reapply Teflon tape and reassemble.	

Troubleshooting continued		
Problem	Possible Cause	Suggested Remedy
Insufficient pressure or decreased outlet capacity	Air line hose leaking	Examine the air hose for any holes and tears. If the hose is found to be defective replace it.
	Safety valve leaking	Examine the condition of the safety valve. If the valve is leaking immediately shut off the compressor and cease using it. Have the unit serviced/checked by an authorised service centre and repaired. Don't continue to use the unit with a leaking safety valve.
Excessive oil consumption	Oil level too high	Maintain the oil at the correct level
	Hole in oil filling plug (14) blocked	Check and clean
	Piston ring and/or cylinder worn or damaged	Use authorised service centre to check and repair if necessary

Maintenance

1. After the first 10 hours of working, empty the crank case of oil and refill with clean oil by removing the crank case oil plug (left hand side of the crank case at the bottom)

Note. Use good quality compressor lubricating oil.

- SAE30 or L-DAB 100 over 10°C
 - SAE10 or L-DAB 68 under 10°C
2. After each subsequent 500 hours of operation, again drain the oil and refill the crank case with clean oil.
 3. After each day of operation unscrew the drain cock (10) under the tank to drain out any condensation that is in the tank. This will protect the tanks from rusting and prolong the product life. Once the draining has been completed screw the drain cock (10) closed.

4. Regularly check the air filter insert cartridge inside the air filter assembly (15) and clean or replace the insert when necessary.
5. Check daily the operation of the safety valve. This check should be performed when the tank contains close to max pressure in the tank.

To check the valve, pressurise the tank, and pull the ring OUTWARDS on the safety valve.

Air should discharge from the valve.

Release the ring of the safety valve. When the ring is released the air discharge must stop.

WARNINGS.

Safety glasses must be worn when performing this test.

Do not have your face close to the safety valve when performing this test as air will discharge from the valve at a high force.

If the safety valve does not operate correctly in any way as described above, turn off the compressor immediately and have the compressor and safety valve checked and tested at an authorised service centre.

DO NOT CONTINUE TO USE THE COMPRESSOR IN ANY WAY IF THE SAFETY VALVE DOES NOT WORK AS ABOVE.

Maintaining the air filter

1. To clean the air filter insert you need to take the air filter (15) apart first. This can be achieved by lifting the air filter housing cover over the protruding tabs on the air filter casing followed by pulling the air filter housing cover towards you.



2. Pull out the air filter and tap it a few times against a surface that is dry and clean to loosen up and remove any dust and build up. Now soak it in warm soapy water, rinse and wring dry.

3. Replace the air filter insert cartridge, then re-install the filter cover back on by firstly lining up the lugs and pushing the cover firmly over the lugs to securely lock the air filter housing into position.



General inspection

1. Regularly check that all the fixing screws are tight.
2. The supply cord of the tool should be checked frequently for damage. If damaged, have the cordset replaced by an authorised service facility to avoid a hazard.

Cleaning

1. Keep the tool's air vents unclogged and clean at all times.
2. Remove dust and dirt regularly. Cleaning is best done with a soft brush or a rag.
3. Re-lubricate all moving parts at regular intervals.
4. If the body of the compressor needs cleaning, wipe it with a soft damp cloth. A mild detergent can be used but nothing like alcohol, petrol or other cleaning agent.
5. Never use caustic agents to clean plastic parts.

CAUTION. Water must never come into contact with the tool.

Power cord maintenance

Only an authorised service centre should replace the cordset or carry out other repairs. If the cordset is damaged or worn, have it repaired or replaced by an authorised service centre.

GMC customer assist

Attach Your
Receipt Here

If your product needs repairing, replacing, technical service or you simply need help or advice, please contact us on our Customer Assist Line 1300 880 001 (Australia) or 0800 445 721 (New Zealand).

For prompt service we suggest you log your service request online at www.gmcservice.com.au. Should you not have access to the Internet, please contact our service department on **1300 880 001 (Australia) or 0800 445 721 (New Zealand)**. 7am – 7pm, 7 days a week (AEST).

Please note that if repair or replacement is required, you must provide a valid original purchase receipt.

You will need the following details at hand to log your service request;

Personal details: First & Last name, address, pick up address, contact phone numbers, email address

Product details: Product number, date of purchase, retailer bought from, State & postcode, receipt number, reason for the request, copy of official purchase receipt

Attach your purchase receipt and save with this Manual for future reference.

Please refer to our website www.gmcompany.com for full GMC warranty Terms and Conditions.

GMC[®]
GLOBAL MACHINERY COMPANY