



**KYE Systems Corporation**

# *User's Guide*

*ColorPage-HR6A Scanner*



All trademarks and brand names mentioned in this publication are property of their respective owners.

*©2001..KYE Systems Corp. All rights reserved. No portion of this document may be reproduced without permission.*

# Table of Contents

<b>INTRODUCTION .....</b>	<b>1</b>
HOW TO USE THIS GUIDE .....	2
CONVENTIONS OF THIS GUIDE .....	2
A NOTE ABOUT ICONS .....	3
SYSTEM REQUIREMENTS .....	4
PACKAGE CONTENTS .....	5
<b>CHAPTER I. INSTALLING GENIUS COLORPAGE-HR6A SCANNER .....</b>	<b>6</b>
SOFTWARE REQUIREMENTS .....	7
HARDWARE REQUIREMENTS .....	7
INSTALLING AND SETTING UP THE SCANNER.....	7
SOFTWARE INSTALLATION .....	10
INSTALLING ADDITIONAL SOFTWARE .....	11
UNINSTALLING THE SCANNER.....	11
<b>CHAPTER II. USAGE AND MAINTENANCE .....</b>	<b>12</b>
SCANNER UTILITY PROGRAM .....	13
<i>Connection Status</i> .....	14
<i>Aligning the Scanner</i> .....	14
<i>Lamp Control</i> .....	15
USING THE ADF (AUTO DOCUMENT FEEDER).....	16
SCANNING .....	18
<i>Autocrop Scan Pad</i> .....	18
<i>Scan and Image Editing</i> .....	18
<b>CHAPTER III. HOW TO USE QUICK FUNCTION BUTTONS.....</b>	<b>20</b>
FUNCTION BUTTONS SETTING.....	21
<i>"Scan" Button</i> .....	21
<i>"Email/Web" Button</i> .....	21
<i>"Text/OCR" Button</i> .....	23
<i>"Print/Copy" Button</i> .....	23
<i>"File/Fax" Button</i> .....	24
MAINTENANCE .....	26
<b>APPENDIX A: SPECIFICATIONS.....</b>	<b>27</b>
<b>APPENDIX B: CUSTOMER SERVICE AND WARRANTY.....</b>	<b>28</b>
STATEMENT OF LIMITED WARRANTY .....	29
FCC RADIO FREQUENCY STATEMENT .....	30
<b>CONTACTING GENIUS.....</b>	<b>31</b>

# Introduction

Welcome to the world of Genius ColorPage–HR6A scanners, the ultimate in imaging. Your new scanner will improve the professionalism of your day-to-day computing tasks by allowing you to input images and electronic text into your computer system.

Like all of our products, your new scanner is thoroughly tested and backed by our reputation for unsurpassed dependability and customer satisfaction.

Please remember to register your scanner via Genius' Web Site. As long as you complete the registration, you are one of our Genius Club members and will receive on-going Genius new product and updated driver information from time to time.

The last page of this user's manual provides more information for contacting Genius Service Center. Please feel free to contact us or visit GeniusLife Homepage (<http://www.geniusnet.com.tw>) for getting better service.

Thank you for choosing Genius Product. We hope you will continue to turn to us for additional quality products as your computing needs and interests grow.

# ***How to Use This Guide***

---

This User's Guide provides instructions and illustrations on how to install and operate your scanner. This guide assumes the user is familiar with the Microsoft Windows 98/Me/2000. If this is not the case, we suggest you learn more about Microsoft Windows by referring to your Microsoft Windows manual before using your scanner.

The Introduction section of this manual describes the box contents and minimum computer requirements to use this scanner. Before you start installing your Genius ColorPage–HR6A, please check the box contents to make sure all parts are included. If any items are missing, please contact the vendor where you purchased your scanner or the Genius Service Center directly at one of the locations listed on the last page of this manual.

**Chapter I**, Setting Up Your New Genius ColorPage-HR6A Scanner, describes how to install scanner's programs and connect the scanner to your computer.

**Note: The ColorPage-HR6A scanner connect to your computer through the Universal Serial Bus (USB). If your computer does not support USB technology, you will need to purchase a USB interface card to add USB capabilities to your computer.**

**Chapter II** describes how to test, maintain and clean your scanner. It also describes how to use the Scanner Utility Program which helps you troubleshoot and fix connection problems which may have occurred during the scanner installation.

**Chapter III** contains some basic descriptions on how to use your scanner. More detailed descriptions can be found by using the Help function in the relevant scanner programs. Appendix A contains Genius's limited warranty agreement and FCC statement concerning the product.

## ***Conventions of this Guide***

---

**Bold** — Important note or first use of an important term in a chapter.

**ALL CAPS** — Represents commands or contents on your computer screen.

# ***A Note about Icons***

---

This guide uses the following icons to point out information that deserves special attention.



**Danger**

**Danger:** A procedure that must be followed carefully to prevent injury, or accidents.



**Caution**

**Caution:** Information that, if not followed, may result in data loss or damage to the product.



**Attention**

**Pay Special Attention:** Instructions that are important to remember and may prevent mistakes.

# ***System Requirements***

---

- Windows/Intel Compatible Personal Computer
- Pentium CPU or above
- CD-ROM Drive
- 64 MB RAM (128 MB Recommended)
- 160 Free Hard Disk Space (260 MB Recommended)
- USB Port
- Microsoft™ Windows Me/98/2000
- **NOTE:** Windows NT 4.0 does not support Universal Serial Bus (USB) connectivity.
- Video card that supports 16-bit color or greater

# Package Contents

---

1. Scanner with ADF (Automatic Document Feeder)
2. Power Adapter (24V 550mA)
3. USB Cable
4. Quick Installation Guide
5. CD-ROM in 1 pc  
Setup / Application CD-ROM includes the following application programs:
  - Scanner Setup Program
  - Genius TWAIN Program
  - NewSoft PageManager Program
  - NewSoft ImageFolio (Imaging Editing Software)
  - ABBYY FineReader Sprint 4.0 (Text Recognition Software)
  - NewSoft Mr. Photo (Photo Management Software)
  - BridgeWell Page abc (Web Editing Software)
  - This User's Guide (Electronic Version)
6. Autocrop Scan Pad



# **Chapter I. Installing Genius ColorPage-HR6A Scanner**



Before installing your scanner, please verify that you have all of the proper components. A list of the package contents is provided page 5 of this guide.

## ***Software Requirements***

---

Genius ColorPage-HR6A comes with scanner body, scanner's install driver, Genius TWAIN program, NewSoft PageManager program, NewSoft ImageFolio image-editing software, NewSoft Mr. Photo photo management software, ABBYY FineReader Sprint 4.0 OCR software, BridgeWell Page abc web editing software. All of these programs use approximately 160 megabytes of hard disk space after installing into your computer. To ensure ample room for the installation, as well as for scanning and saving images, a minimum of 260 megabytes of hard disk space is recommended.

## ***Hardware Requirements***

---

Genius ColorPage-HR6A scanner connects to your computer through the Universal Serial Bus (USB) which supports *hot Plug and Play*. To determine whether your computer is USB-capable, you must check the rear of your PC. Upon examination, you should find one or two rectangular USB ports.

If you don't find such USB ports on your computer, then you need to purchase a certified USB interface card to add USB capabilities to your computer.

## ***Installing and Setting up the Scanner***

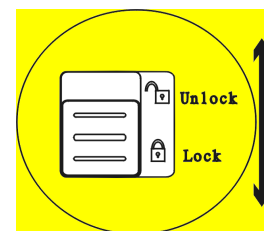
---

Please follow the step-by-step procedures described below to install the Genius ColorPage-HR6A scanner.

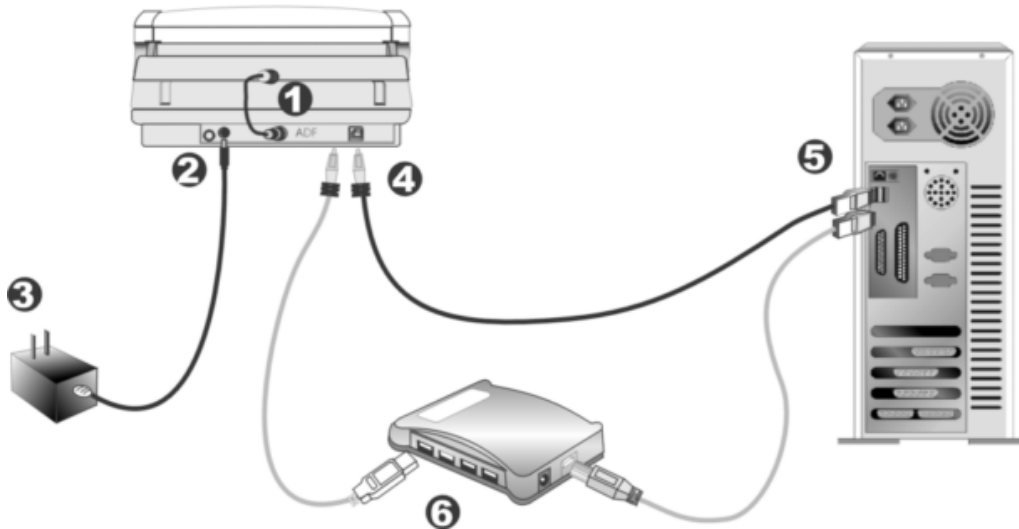
### **VERY IMPORTANT**

#### ***Unlock Your Scanner First***

**To unlock the scanner, move restraint located on the rear of the scanner toward the unlock position. If you need to transport the scanner, please lock it to prevent any scanner damage. For best image quality, be sure the cover is closed before scanning.**

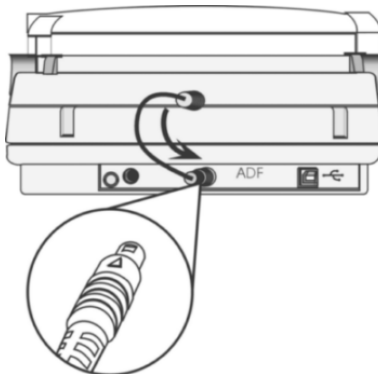


1. Please take a moment to study Figure 4.

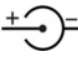



**Figure 4. Installing the ColorPage-HR6A Scanner**

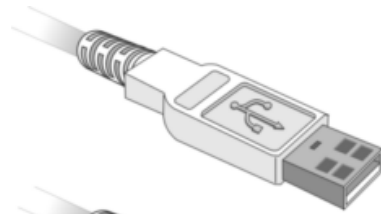
2. Attach the ADF connector cable. At the back of the scanner, you will find a short cable dangling from the ADF unit. Please attach the loose end of this cable to the port marked as ADF (see Figure 4, Step 1). The cable connector has a small triangle etched on it. Make sure this triangle is facing up when making this connection.



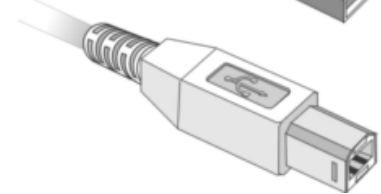
**Figure 5. Attaching the ADF Connector Cable**

3. Plug the power adapter into the scanner's power receptor which can be identified by the symbol  on its top (see Figure 4, Step 2).
4. Plug the other end of the power adapter into a standard AC power outlet (see Figure 4, Step 3).
5. Plug the square end (Type B connector) of the included USB cable into the USB port at the rear of the scanner (see Figure 4, Step 4). You can find a USB sign  beside the USB connector at the rear of the scanner.
6. Plug the rectangular end (Type A connector) of the USB cable to the USB port on the back of your computer (see Figure 4, Step 5).

**Note:** If there is another USB device connected to the computer, connect the scanner to an available USB port.



Type A Connector



Type B Connector

7. If you plan to connect your scanner to a USB hub<sup>1</sup>, make sure that the hub is connected to the USB port in your computer. Next, connect the scanner to the USB hub (see Figure 4, Step 6).

**Note:** If you do not have a USB port available, you might need to buy a USB port.



**Attention**

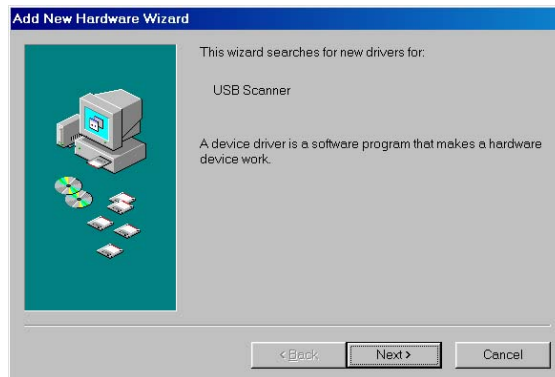
**When possible, we recommend using the 4 foot (1.2 meters) USB cable provided with your scanner. If you wish to use a different USB cable, make sure that it is a fully rated twisted-pair USB cable and has a Type A connector at one end and a Type B plug on the other.**

---

<sup>1</sup> The USB hub is not included with the scanner.

# Software Installation

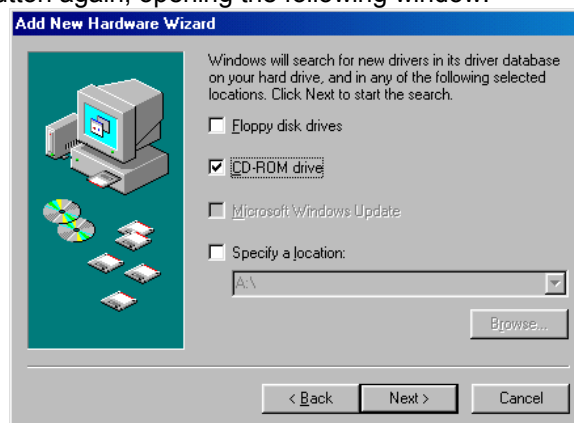
1. If the USB components on your computer are functioning correctly, they will automatically sense a new device connected to the USB port causing the following window to appear on your screen. **Note:** If your computer was off when you connected the scanner, the message below will be displayed when you turn the computer on and when Windows starts.



2. Please click on the NEXT button to continue. The following window will appear:



3. Choose SEARCH FOR THE BEST DRIVER FOR YOUR DEVICE [RECOMMENDED] and click on the NEXT button again, opening the following window:



- Next, please insert the Setup/Application CD-ROM, included with your scanner, into your CD-ROM drive. Click the CD-ROM DRIVE box once, causing a check to appear in it as shown above and then click on the NEXT button again. The following window will appear:



- Click on the NEXT button to continue. Follow the on-screen instructions to install all software that your new USB scanner requires.
- After the software is installed, close all open applications and click on the FINISH button to restart your computer now.

Please consult the following chapter for information on how to test, configure and use your new scanner.

## ***Installing Additional Software***

---

Your scanner is TWAIN compliant and functions with virtually all available TWAIN compatible program. If you purchase additional program to be used with your scanner, please make sure that it conforms to the TWAIN standard.

## ***Uninstalling the Scanner***

---

Windows 98/Me/2000 provides an Uninstall Wizard for uninstalling your scanner software driver and application programs:

### **Uninstall from the “Start Menu” (Uninstall Wizard)**

- From the Windows Start menu, select Programs, followed by the name of your scanner.
- From the drop-down menu, select Uninstall.
- A window will pop up, asking you to confirm the deletion of the selected application and all of its components. Click OK and the UninstallShield program will run automatically and delete the scanner software driver.
- Once completed, restart Windows.

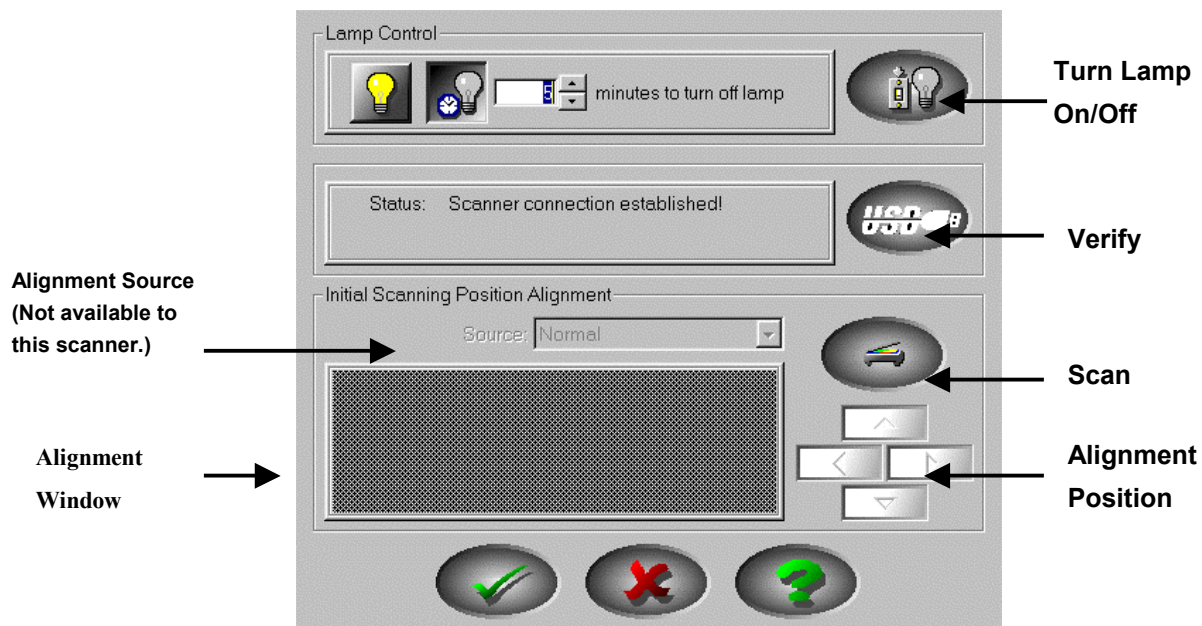
## **Chapter II. Usage and Maintenance**

# Scanner Utility Program

The Scanner Utility Program can help you get your new scanner up and running. In addition, it contains a number of other features to help you tailor and control the scanner.

Most significantly, the Scanner Utility Program checks to make sure that the scanner software is properly installed and the scanner and computer are communicating with each other.

Two other features of the Scanner Utility program are **the scanning lamp controls** and **the scanning position alignment utility**. The Scanner Utility allows you to turn the scanning lamp on and off, and define an idle time for the scanning lamp to automatically turn itself off. Also, it allows you to define the exact position on the scanning glass where scanning will begin. The scanner lock was designed to hold the scanning lamp in place during shipping, but some refinement of the initial scanning position may still be necessary.



**Figure 6. Scanner Utility**



## Attention

The Scanner Utility program does NOT affect the quality of scanned images. It is only used to establish a connection with the scanner. Settings that affect the scanned image (i.e., color, size, readability, clarity, etc.) can be found in the scanner software programs and especially the TWAIN interface.

## Connection Status

The first step to take when troubleshooting connection problems with your scanner is to check all physical connections. Make sure your scanner is plugged in and the USB cable is fit snugly into the rear of your scanner and computer.

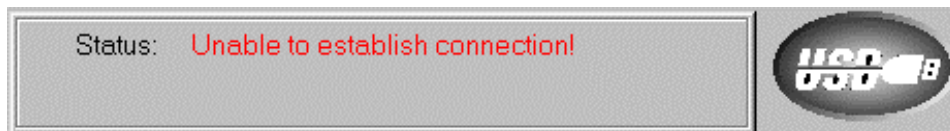
Secondly, determine the status of your USB hardware and software configuration. To do this, please run the Scanner Utility program as described below:

1. Click on the START button, then choose PROGRAMS, ColorPage-HR6A and then SCANNER UTILITY.
2. Once the Scanner Utility window is open, locate and click on the USB button shown below:



This will check the status of your USB hardware and software configuration.

3. If there is a problem with the installation, the following message will appear:



4. If the connection is OK, the following window will be displayed:



## Aligning the Scanner

In most cases, the scanner doesn't need to be aligned but there are instances when the alignment might be required. You need to align the scanner only if parts of the scanned document are missing from any of its edges. For example, the heading of a document might be missing from the top edge after the document has been scanned.

To align the scanner, follow the steps below:

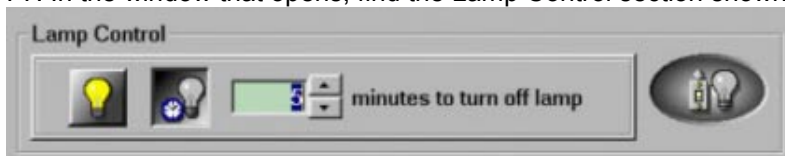
1. Place a photograph on the top right side of the scanner glass (near the back of the scanner). Please note that only part of the photograph will be scanned.
2. Click on the SCAN button. *Part* of the photograph will be displayed in the ALIGNMENT window.
3. Click on the ALIGN POSITION buttons until the top left corner of the scanned photograph aligns with the top left corner of the preview window.
4. Click on the check mark button when the alignment has been completed.



## Lamp Control

The scanner's lamp may be turned ON and OFF manually in the Scanner Utility program. While there, you can also set a timer to turn the lamp off after the scanner has been idle for a designated amount of time.

To do this, click on the Windows START button and choose PROGRAMS, ColorPage-HR6A, SCANNER UTILITY. In the window that opens, find the Lamp Control section shown below:



Click on the On/Off switch at the far right of the section to immediately turn the scanning lamp on or off.

You may also set the default time for the lamp to automatically turn off after a scan by clicking the up or down arrows next to the area that reads "minutes to turn off lamp."

# Using the ADF (Auto Document Feeder)

The Auto Document Feeder (ADF) is a special unit which comes preinstalled on the scanner lid and can hold up to 15 pieces of paper which will be automatically fed into the scanner.

With this ADF, you can scan up to 15 pages of documents or images at one time, making large scanning tasks easier.



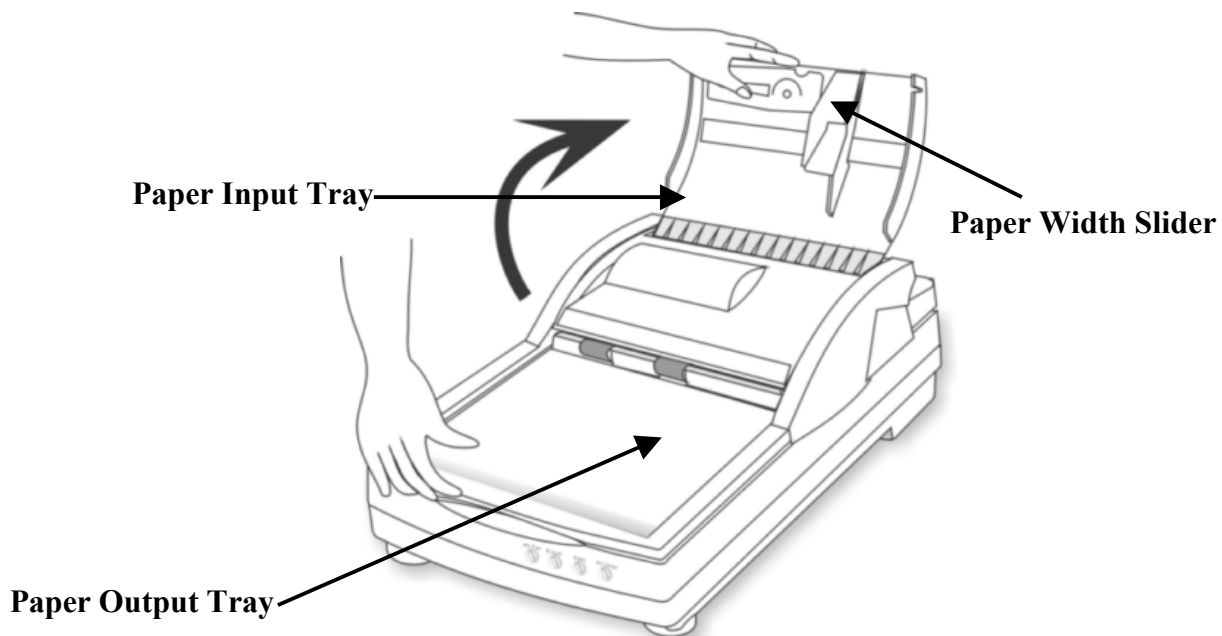
## Attention

- Since the ADF was largely designed for scanning text documents, it is limited to B/W or Gray scans. Likewise, the scanning resolution setting for ADF scanning is limited to 200 to 600 dpi.
- Please remove any documents from the ADF tray if you are attempting to use the flatbed portion of this scanner. Leaving a document on the ADF tray will cause the scanner to scan that document instead of your intended flatbed source.

## To Use the ADF:

1. Snap the paper tray on the top of the scanner open and lift it all the way to the top.

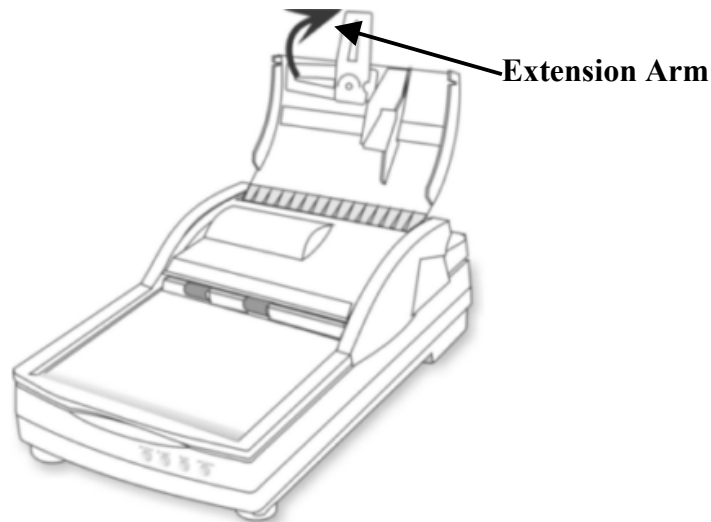
Lift up the paper tray.



**Figure 7. Automatic Document Cover**

2. If you are loading long sheets of paper into the ADF, slide the extension arm to its upright

position to provide further support for the paper.



**Figure 8. Sliding the Extension Arm**

3. Make sure the paper being loaded is completely flat with no creased corners, etc. Also remove any staples if present, before loading the page into the ADF.
4. Load the documents face-down into the ADF. The left side of the paper should touch the left side of the ADF. The documents should be all the way into the ADF, touching the bottom.



**Attention**

**Only use normal paper in the ADF. The ADF does not support transparencies. Please refer to Appendix B: Specifications at the back of this manual for more detailed information about the different types of paper that can be loaded into the ADF.**

5. Adjust the paper width slider for the paper size you are using. The paper width slider should be gently touching the right side of the documents.

The loaded documents should now be bordered on 3 sides; the bottom should be all the way in the ADF touching the bottom, the left side should be touching the left wall of the ADF and the right side should be touching the paper-width slider.



**Attention**

- **Although the documents should be loaded firmly in place ensuring optimum scanning accuracy, they should never be wedged in so tightly that the process of feeding them through the scanner is strained.**
- **The ADF cover should be kept closed when not in use. Make sure to return the extension arm to its down position before closing the cover**

# Scanning

---

Genius ColorPage-HR6A scanner is able to scan from small size document (such as business cards) to A4-sized magazines. However, some programs have limitations as to the information they can handle. The capacity of the computer's memory, or free hard disk space, can also limit the physical size of the document that you scan.

## Autocrop Scan Pad

This pad is specially designed for flatbed scanner doing automatically autocrop and scan by using quick function buttons. To make function buttons performing "one-touch scan to function", please place a picture face down onto the scanner glass and cover the "Autocrop Scan Pad" on the picture before you pressing anyone of quick function buttons.



## Scan and Image Editing

ColorPage-HR6A scanner provides two different ways for scanning:

### From "SCAN" Hotkey --

1. Open the paper cover and place a picture face down onto the scanner glass and close the paper cover.
2. Pressing the "Scan" hot key button on the front site of scanner body.
3. The **Presto! PageManager** software will be launched, then **Genius TWAIN** window will appear and starts to automatically scan. (refer to Figure 9. Genius TWAIN)
4. You may select the appropriate scan mode and resolution. To Scan, click the **SCAN** button from **Genius TWAIN** window.
5. The scanned image will be saved into **PageManager** software while completing scan.

6. You may click the **CLOSE** button to close the **Genius TWAIN** window and review the scanned image under the folder of **INBOX** in **PageManager** software.

### From image-editing software --

1. Open the paper cover and place a picture face down onto the scanner glass and close the paper cover.
2. Open NewSoft **ImageFolio LE** or other within image-editing software.
3. Open the **Genius TWAIN** window.

Choose "**Select Source**" in the File menu → the Select Source dialog appears → Select the name of the scanner "**Genius ColorPage-HR6A**" → The dialog box closes → Choose **Acquire** in the File menu, and the **Genius TWAIN** window opens.

4. Select the appropriate scan mode and resolution. To Scan, click the **SCAN** button. To preview image, click the **PRESCAN** button.
5. When scanning completely, click the **CLOSE** button to close the **Genius TWAIN** window, process and view the image.

If an image appears on your screen, your scanner is working properly. If the image doesn't appear to your liking, don't worry. You only need to adjust some settings in the **Genius TWAIN** window. To learn how to adjust scanner settings, please refer to the **Genius Help** by clicking on the **Help** button in the **Genius TWAIN** window.



Figure 9. Genius TWAIN Interface

## **Chapter III. How to Use Quick Function Buttons**

# Function Buttons Setting

---

Before setting scanner buttons, please make sure to install the required application software from the installation selection window firstly.

## "Scan" Button

### ■ Note:

1. The automatically scan and file saving function is only to work under "**NewSoft Presto! PageManager**".
2. Make sure to install "**NewSoft Presto! PageManager**" software before you using the Scan hotkey.

### ■ To set up NewSoft Presto! PageManager as the default Application Program

1. Open the "**Scan Manager Setting**" window by double-clicking the ICON of "**KYE Scan**" from system tray. Or click on mouse RIGHT button and enter "**Setting**".
2. Click on the "**Scan**" ICON in the "**Scan Manager Setting**" window.
3. Choose "**NewSoft PageManager**" as the application Program in drag-down menu.
4. To select automatically scan after preview for flatbed scanning, if necessary.
5. For ADF scanning, to select automatically scan, if necessary.
6. Click on "**Close**" to complete setting.

### ■ To use Scan Button

1. Place a document or picture face down on the scanning glass.
2. To use ADF scanning, please make sure to remove documents from the scanning glass before doing ADF documents scan.
3. Press the "**Scan**" Button
4. "**PageManager**" Window displayed
5. "**Genius TWAIN**" displayed
6. Automatically scanning
7. Automatically saving file under the folder of "**INBOX**" in "**PageManager**" software.

## "Email/Web" Button

### ■ Note

1. Before using this function, please make sure you already installed "**Email program**" (**supporting MAPI protocol**) or "**BRIDGEWELL Page abc**" software in your computer.
2. To use "**Email button**", please make your "**Email program**" as the default application before you using the Email button.
3. To use "**Web button**", please make "**BRIDGEWELL Page abc**" as the default application before you using the Web button.

■ **To set a default Simple MAPI client (i.e. Outlook Express)**

1. In the **Start Menu** choose **Program**
2. Enter "**Internet Explorer**"
3. Find "**Outlook Express**"
4. In the drag-down menu of Tools, select options → Select "**Make Outlook Express as my default email program**" and "**Make Outlook Express as my default Simple MAPI client**".

■ **To set up "Email/Web" Button as "Scan to Email" function**

1. Open "**Scan Manager Setting**" window by double-clicking the ICON of "**KYE Scan**" from system tray. Or click on mouse RIGHT button and enter "**Setting**".
2. Click on the "**Email/Web**" ICON in the "**Scan Manager Setting**" window.
3. Choose "**Email**" as the default application in drag-down application menu.
4. To adjust or select proper scanning attributes for scanning Reflection Object, if necessary.
5. To adjust or select proper scanning attributes for ADF scanning, if necessary.
6. Click on "**Close**" to complete setting.

■ **To use "Email/Web" Button for "Scan to Email" function**

1. Place a document or picture face down on the scanning glass.
2. To use ADF scanning, please make sure to remove documents from the scanning glass before doing ADF documents scan.
3. Press the "**Email/Web**" Button
4. Automatically scanning
5. Automatically saving image file and transfer image file as an attachment of new mail in Email software.

■ **To set up Email/Web Button as "Scan to Web" function**

1. Open "**Scan Manager Setting**" window by double-clicking the ICON of "**KYE Scan**" from system tray. Or click on mouse RIGHT button and enter "**Setting**".
2. Click on the "**Email/Web**" ICON in the "**Scan Manager Setting**" window.
3. Choose "**Page abc**" software in drag-down application menu.
4. To adjust or select proper scanning attributes for scanning Reflection Object, if necessary.
5. To adjust or select proper scanning attributes for ADF scanning, if necessary.
6. Click on "**Close**" to complete setting.

■ **To use Email/Web Button for "Scan to Web" function**

1. Place a document or picture face down on the scanning glass.
2. To use ADF scanning, please make sure to remove documents from the scanning glass before doing ADF documents scan.
3. Press the "**Email/Web**" Button
4. Automatically scanning
5. Automatically saving image file and transfer image file into "**Page abc**" Web Editing software.



## "Text/OCR" Button

Please install and set up *ABBYY FineReader Sprint 4.0* OCR software before you using this function.

### ■ To set up Editor

1. Open "**Scan Manager Setting**" window by double-clicking the ICON of "**KYE Scan**" from system tray. Or click on mouse RIGHT button and enter "**Setting**".
2. Click on the "**Text/OCR**" ICON in the "**Scan Manager Setting**" window.
3. Choose your word processor by drag-down Editor menu.
4. To adjust or select proper scanning attributes for scanning Reflection Object, if necessary.
5. To adjust or select proper scanning attributes for ADF scanning, if necessary.
6. Click on "**Close**" to complete setting.

### ■ To use "Text/OCR" Button

1. Place a typewritten text document face down on the scanning glass.
2. To use ADF scanning, please make sure to remove documents from the scanning glass before doing ADF documents scan.
3. Press the "**Text/OCR**" Button
4. Scanner starting to automatically scanning
5. Choose "**Yes**" or "**No**" for Next Page to do OCR.
6. Word processing software will be launched and recognized Text will be transfer to default word processing software.

## "Print/Copy" Button

Please install and set up printer driver before using this function.

### ■ To set up Printer

1. Open "**Scan Manager Setting**" window by double-clicking the ICON of "**KYE Scan**" from system tray. Or click on mouse RIGHT button and enter "**Setting**".
2. Click on the ICON of "**Print/Copy**".
3. Select the proper printer from the drag-down menu.
4. To adjust or select proper scanning attributes for scanning Reflection Object
5. To adjust or select proper scanning attributes for ADF scanning, if necessary.
6. Click "**Close**" to exit Scan Manager Setting

### ■ To use "Print/Copy" Button

1. Place a document or picture face down on the scanning glass.
2. To use ADF scanning, please make sure to remove documents from the scanning glass before doing ADF documents scan.
3. Press the Print/Copy Button
4. Scanner starting to automatically scan
5. Choose "**Yes**" or "**No**" for Next Page to Copier
6. Copying

## "File/Fax" Button

To use Fax button function, please install **PC Fax** software before setting Fax button.

To use File button function, please install "**NewSoft PageManager**" before setting File button.

### ■ To set up PC Fax software

1. Open "**Scan Manager Setting**" window by double-clicking the ICON of "**KYE Scan**" from system tray. Or click mouse RIGHT button and enter "**Setting**"
2. Click on the ICON of "**File/Fax**"
3. Choose PC Fax software in drag-down application menu.
4. To adjust or select proper scanning attributes for scanning Reflection Object.
5. To adjust or select proper scanning attributes for ADF scanning, if necessary.
6. Click "**Close**" to complete setting.

### ■ To use "File/Fax" Button as "Scan to File" function

1. Place a document or picture face down on the scanning glass.
2. To use ADF scanning, please make sure to remove documents from the scanning glass before doing ADF documents scan.
3. Press the "**File/Fax**" Button
4. Scanner starting to automatically scan
5. Choose "**Yes**" or "**No**" for Next Page to Fax
6. Copying
7. Fax Application Window Open
8. Following the screen instruction to proceed fax transmission.

### ■ To set up File software

1. Open "**Scan Manager Setting**" window by double-clicking the ICON of "**KYE Scan**" from system tray. Or click mouse RIGHT button and enter "**Setting**".
2. Click on the ICON of "**File/Fax**"
3. Choose File Software ("Scan Manager") in drag-down application menu.
4. Select the proper folder from the drag-down filing folder menu.
5. To adjust or select proper scanning attributes for scanning Reflection Object.
6. To adjust or select proper scanning attributes for ADF scanning, if necessary.
7. Click "**Close**" to complete setting.

### ■ To use "File/Fax" Button as "Scan to File" function

1. Place a document or picture face down on the scanning glass.
2. To use ADF scanning, please make sure to remove documents from the scanning glass before doing ADF documents scan.
3. Press the "**File/Fax**" Button
4. Scanner starting to automatically scan

5. Choose **“Yes”** or **“No”** for Next Page to scan.
6. **“PageManager”** Window Open.
7. Scanned Image will be filed into the default folder of **“PageManager”**.

# Maintenance

---



## Caution

To keep your scanner working smoothly, take a moment to review the following maintenance tips.

- Avoid using the scanner in a dusty environment. When it is not in use, keep the scanner covered. Dust particles and other foreign objects may damage the unit.
- Do not attempt to disassemble the scanner. There is danger of an electrical shock and opening your scanner will void your warranty.
- Do not subject the scanner to excessive vibration. It may damage the internal components.
- Be sure not to bump or knock the scanner glass as it is fragile and could break.
- Clean the scanner glass by lightly spraying a non-abrasive glass cleaner onto a lint-free cloth. Then, wipe the glass thoroughly with the cloth. **DO NOT SPRAY CLEANER DIRECTLY ONTO THE SCANNER GLASS.** Excess liquid residue may fog or damage the scanner.
- Your scanner operates best in temperatures between 10° C to 40° C (50° F to 104° F).

## Appendix A: Specifications

<b>General</b>	
Physical dimensions:	500 x 270 x 153 mm
Weight:	2.1 kgs (4.62 lbs)
Operating Temperature:	10° C to 40° C (50° F to 104° F)
Scan Area:	Flatbed: 8.5" x 11.61" (210 mm x 295 mm) Auto Document Feeder: Max. 8.5" x 14" (216 mm x 356 mm) Min. 6.5" x 4.33" (165 mm x 110 mm)
Scan Method:	Single-Pass
Scan Mode:	36-Bit Color / 42-Bit Color / 48-Bit Color for program enhancement 14-Bit Grayscale 1-Bit Line-art (Black & White)
Resolution:	Flatbed: Optical 600 x 1200 dots per inch (19200 dpi software interpolated) Automatic Document Feeder: only in B&W or Grayscale mode, from 50 dpi to 600 dpi.
ADF (Auto Document Feeder)	Max. Paper Loading: 15 pages Paper Thickness / Weight for ADF: 0.065mm to 0.145mm / 70-90g/m <sup>2</sup> Speed: 3 PPM for Text scanning
TWAIN	Full TWAIN Compliance
Connection:	USB Port
Warranty:	1 Year Warranty (from date of purchase)
Lamp type:	Cold Cathode Lamp
Power adapter:	Power Output DC 24V, 550mA
Power Consumption:	Operation – 13.2 watts maximum Idle – 6 watts
EMI:	FCC Class B

## Appendix B: Customer Service and Warranty

If you encounter problems with your scanner, please review the installation instructions and troubleshooting suggestions contained in this guide.

For further assistance call our customer support phone number listed on the last page of this guide. To avoid any delay, please have the following information available before calling:

- **Scanner name and model number**
- **Scanner serial number (located at rear of scanner near port connectors)**
- **A detailed description of the problem**
- **Your computer manufacturer and its model number**
- **The speed of your CPU (Pentium 133, etc.)**
- **Your current operating system and BIOS (optional)**
- **Name of program package(s), version or release number and manufacturer of the program**
- **Other USB devices installed**



### **Attention**

We are continuously enhancing the performance of our product drivers. To check for the updated device driver you may visit our Web Site. (Please refer to the section of “Contacting Genius” on the last page of this manual.)

# ***Statement of Limited Warranty***

---

This Statement of Limited Warranty applies only to the options you originally purchase for your use, and not for resale, from an authorized reseller.

The manufacturer warranty period for this product is one year from the date of Original Purchase as shown on your receipt, and includes all parts and labor. You should keep the receipt as it establishes Proof of Original purchase. You will need it to obtain warranty service.

If you transfer this product to another user, warranty service is available to that user for the remainder of the warranty period. You should give your proof of purchase to that user.

We warrant that this machine will be in good working order and will conform to its functional descriptions in the documentation provided. Upon provision of proof of purchase, replacement parts assume the remaining warranty of the parts they replace.

Before presenting this product for warranty service, you must remove all programs, data and removable storage media. Products returned without program will be replaced without program. This Limited Warranty service does not provide for carry-in exchange when the problem results from accident, disaster, vandalism, misuse, abuse, unsuitable environment, program modification, Electro Static Discharge (ESD) damage, another machine or non-vendor modification for this product.

If this product is an optional feature, this Limited Warranty applies only when the feature is used in a machine for which it was designed.

If you have any questions about your Limited Warranty, contact Genius.

THIS LIMITED WARRANTY REPLACES ALL OTHER WARRANTIES, EXPRESS OR IMPLIED, INCLUDING, BUT NOT LIMITED TO, THE IMPLIED WARRANTIES OF MERCHANTABILITY AND FITNESS FOR A PARTICULAR PURPOSE. HOWEVER, SOME LAWS DO NOT ALLOW THE EXCLUSION OF IMPLIED WARRANTIES. IF THESE LAWS APPLY, THEN ALL EXPRESS AND IMPLIED WARRANTIES ARE LIMITED IN DURATION TO THE WARRANTY PERIOD. NO OTHER WARRANTIES APPLY AFTER THAT PERIOD.

Some jurisdictions do not allow limitations on how long an implied warranty lasts, so the above limitation may not apply.

Under no circumstances are we liable for any of the following:

1. Third party claims against you for losses or damages.
2. Loss of, or damage to, your records or data; or
3. Economic consequential damages (including lost profits or savings) or incidental damages, even if we are informed of their possibility.

Some jurisdictions do not allow the exclusion or limitations of incidental or consequential damages, so the above limitation or exclusion may not apply to you.

This Limited Warranty gives you specific legal rights, and you may also have other rights that vary from jurisdiction to jurisdiction.

# ***FCC Radio Frequency Statement***

---

This equipment has been tested and found to comply with the limits for a Class B digital device, pursuant to part 15 of the FCC rules. These limits are designed to provide reasonable protection against harmful interference in a residential installation.

This equipment generates, uses and can radiate radio frequency energy and, if not installed and used in accordance with the instructions, may cause harmful interference to radio communications. However, there is no guarantee that interference will not occur in a particular television reception (which can be determined by turning the equipment off and on), the user is encouraged to try to correct the interference by one or more of the following measures:

- √ Reorient or relocate the receiving antenna.
- √ Increase the separation between the equipment and receiver.
- √ Connect the equipment to an outlet on a circuit different from that which the receiver is connected.
- √ Shielded interconnect cables and shielded power cord which are supplied with this equipment must be employed with this equipment to ensure compliance with the pertinent RF emission limits governing this device.
- √ Consult the dealer or an experienced radio/TV technician for help if the conditions persist.
- √ Changes or modifications not expressly approved by the manufacturer or authorized service center could void the users authority to operate this equipment.



# Contacting Genius

## **USA & CANADA**

### **KYE International Corp.**

2605 E. Cedar St.  
Ontario, CA 91761-8511 U. S. A.  
Tel: (1) 909 923 3510  
Fax: (1) 909 923 5494  
Sales: (1) 800 456 7593

Web Site: <http://www.genius-kye.com>

## **EUROPE**

### **KYE Systems Europe GmbH**

Karl Benz Str. 9  
D-40764 Langenfeld, Germany  
Tel: (49) 21 73 9743-0  
Fax: (49) 21 73-9743-17  
HotLine: (49) 21 73-9743-21  
Web Site: <http://www.genius.kye.de>

## **ASIA PACIFIC**

### **KYE Systems Corp.**

No.492Chung Hsin Rd., Sec.5, San Chung, Taipei  
Hsien 241, Taiwan, R.O.C.  
Tel: (886) 2 2995-6645  
Fax: (886) 2 2995-6649  
Web site: <http://www.geniusnet.com.tw>

## **ASIA PACIFIC**

### **KYE Systems (M) SDN BHD**

NO. 2, Jalan BK 1/12, Kinrara Industrial Park  
Bandar Kinrara 6 1/2 Miles, Punchong Road  
58200 Kuala Lumpur  
Malaysia  
Tel: (603) 575 1355  
Fax: (603) 575 6362  
URL: <http://www.kye-systems.com.my>

## **EUROPE**

GenFra S.A.  
57 chemin du Vieux Chéne  
38240 Meylan  
France  
Tel: (33) 0 476181030  
Fax: (33) 0 476182717

## **EUROPE**

### **KYE Systems UK Ltd.**

Unit 4, 131 Beddington Lane,  
Croydon, Surrey. CR0 4TD. UK  
Tel: (44) 208 664 2727 (sales)  
(44) 208 664 2710 (Tech. Support)  
Fax: (44) 208 664 2721(sales)  
(44) 208 664 2711(Tech. Support)  
Web Site: <http://www.kye.co.uk>

## **ASIA PACIFIC**

### **KYE Systems H.K. Corp. Ltd.**

Unit 1701, 17th Floor, Aitken Vanson Centre,  
No. 61 Hoi Yuen Road,  
Kwun Tong, Kowloon, Hong Kong  
Tel: (852)2342 3813  
Fax: (852)2341 9517  
Web Site: <http://www.geniusnet.com.hk>

## **ASIA PACIFIC**

### **Genius IT Incorporation (Thailand) Ltd.**

7 The IT Mall Plaza Bldg.  
Room no. 3E 43-44 (3<sup>rd</sup> fl.)  
Room no. 4C 01-04 (4<sup>th</sup> fl.)  
Ratchadapisek Rd., Dindaeng,  
Bangkok 10320  
Thailand  
Tel: (662) 642 0610  
Fax: (662) 642 620