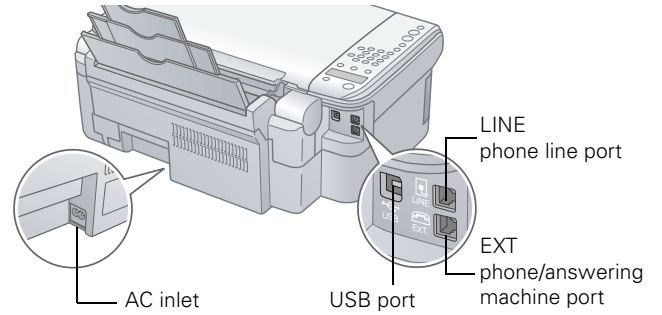
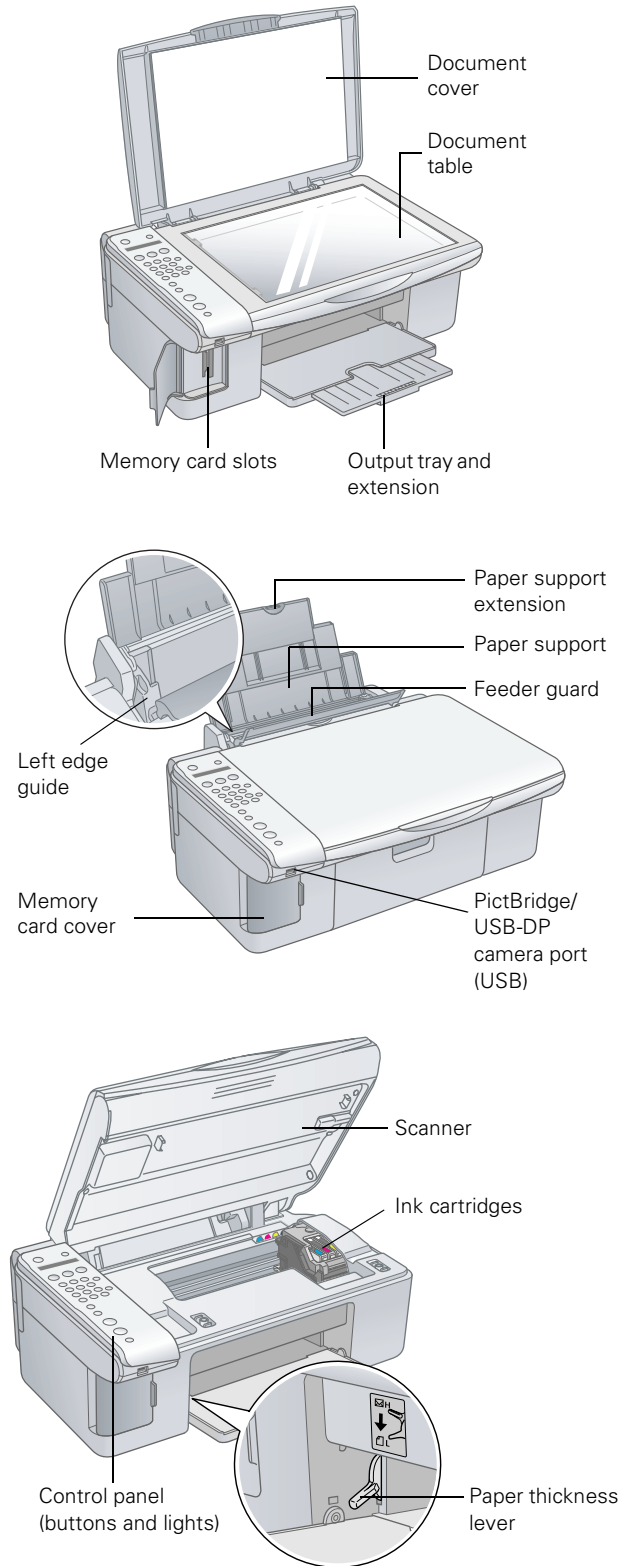


Epson Stylus CX5800F Parts



Accessories

Ink Cartridges

Color	Part number
Black	T060120
Cyan	T060220
Magenta	T060320
Yellow	T060420

Media

Paper name	Size	Part number
Epson® Ultra Premium Glossy Photo Paper	Borderless 4 × 6 inches	S041934
	Letter (8.5 × 11 inches)	S041935
Epson Premium Bright White Paper	Letter (8.5 × 11 inches)	S041586
Epson Premium Glossy Photo Paper	Borderless 4 × 6 inches	S041808/ S041727
	Borderless 5 × 7 inches	S041464
	Borderless 8 × 10 inches	S041465
	Letter (8.5 × 11 inches)	S041286/ S041667
Epson Premium Semigloss Photo Paper	Letter (8.5 × 11 inches)	S041331
Epson Glossy Photo Paper	Borderless 4 × 6 inches	S041809
	Letter (8.5 × 11 inches)	S041141/ S041649/ S041272/ S041271
Epson Matte Paper Heavyweight	Borderless 8 × 10 inches	S041467
	Letter (8.5 × 11 inches)	S041257
Epson Double-Sided Matte Paper*	Letter (8.5 × 11 inches)	S041568
Epson Photo Quality Ink Jet Paper	Letter (8.5 × 11 inches)	S041062
	Legal (8.5 × 14 inches)	S041067
	A4 (8.3 × 11.7 inches)	S041061

* Windows only

Specifications

Printing

Printing method	On-demand ink jet
Nozzle configuration	Black: 90 nozzles Color: 270 nozzles (90 each cartridge: cyan, magenta, yellow)
Print direction	Bidirectional with logic seeking

Ink Cartridges

Color	Cyan, magenta, yellow, black
Cartridge life	6 months at 77 °F (25 °C) after opening the package
Temperature	Storage: -4 to 104 °F (-20 to 40 °C) 1 month at 104 °F (40 °C) Freezing*: 3.2 °F (-16 °C)

* Ink thaws and is usable after approximately 3 hours at 77 °F (25 °C).

Caution:

To ensure good results, use genuine Epson ink cartridges and do not refill them. Other products may cause damage to your printer not covered by Epson's warranty. Do not use an ink cartridge if the date on the package has expired.

Paper

Note:

Since the quality of any particular brand or type of paper may be changed by the manufacturer at any time, Epson cannot guarantee the quality of any non-Epson brand or type of paper. Always test a sample of paper stock before purchasing large quantities or printing large jobs.

Single sheets

Size	A4 (8.3 × 11.7 inches) A5 (5.8 × 8.3 inches) A6 (4.1 × 5.8 inches) Letter (8.5 × 11 inches) Legal (8.5 × 14 inches) Half-letter (5.5 × 8.5 inches) 4 × 6 inches 5 × 7 inches 3.5 × 5 inches 8 × 10 inches User Defined up to 8.5 × 44 inches
Paper type	Plain bond paper or special paper distributed by Epson
Thickness	0.003 to 0.005 inch (0.08 to 0.13 mm)
Weight	17 lb (64 g/m ²) to 24 lb (90 g/m ²) (for plain bond paper)

Envelopes

Size	No. 10 (4.1 × 9.5 inches)
Paper type	Plain bond paper
Thickness	0.016 to 0.02 inch (0.40 to 0.52 mm)
Weight	20 lb (75 g/m ²) to 24 lb (90 g/m ²)

Note:

Poor quality paper may reduce the print quality and cause paper jams or other problems. If you have print quality problems, switch to a higher grade paper.

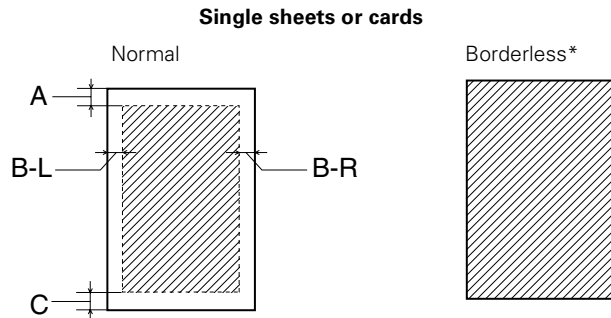
Do not load curled or folded paper.

Use paper only under these conditions:

Temperature: 59 to 77 °F (15 to 25 °C)

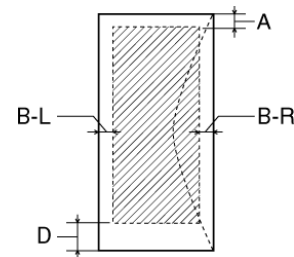
Humidity: 40 to 60% RH

Printable Area



* When printing with the borderless feature, print quality may decline in the expanded area. Before printing large jobs using the borderless setting, print a single sheet to confirm printout quality.

Envelopes



- A: The minimum top margin is 0.12" (3.0 mm).
- B-L: The minimum left margin is 0.12" (3.0 mm).
- B-R: The minimum right margin is 0.12" (3.0 mm).
- C: The minimum bottom margin is 0.12" (3.0 mm).
- D: The minimum bottom margin is 0.78" (20 mm).

Note:

Always load paper into the sheet feeder with the short edge first. Load envelopes flap edge left with the flap side down.

Scanning

Scanner type	Flatbed color
Photoelectric device	CIS
Effective pixels	10,200 × 14,040 pixels at 1200 dpi
Document size	8.5 × 11.7 inches (216 × 297 mm) A4 or US letter size
Scanning resolution	1200 dpi (main scan) 2400 dpi with Micro Step (sub scan)
Output resolution	50 to 4800, 7200, and 9600 dpi (50 to 4800 dpi in 1 dpi increments)
Scanning speed	Approximately 15 msec per line at 600 dpi (full color)
Image data	16 bits per pixel per color internal 8 bits per pixel per color external (maximum)
Interface	One USB 2.0 Hi-Speed or USB 1.1 port
Light source	RGB three color LED

Mechanical

Paper path	Sheet feeder, top entry
Sheet feeder capacity	About 100 sheets at 17 lb (64 g/m ²)
Dimensions	Width: 18.2 inches (463 mm) Depth: 13.5 inches (344 mm) Height: 7 inches (178 mm) (with the output tray and paper support closed)
Weight	15 lb (6.8 kg) without ink cartridges

Electrical

Input voltage	90 to 132 V
Rated frequency	50 to 60 Hz
Rated current	1.2 A max
Power consumption	Approx. 20 W (operating) Approx. 9 W (idle mode) Approx. 1 W (power-off mode)

Environmental

Temperature	Operation: 50 to 95 °F (10 to 35 °C) Storage: -4 to 104 °F (-20 to 40 °C) 120 hours at 140 °F (60 °C) [packed] 1 month at 104 °F (40 °C) [unpacked]
Humidity	Operation: 20 to 80% RH Storage: 5 to 85% RH (without condensation)

USB Interface

Standard	Based on Universal Serial Bus Specifications Revision 2.0, Universal Serial Bus Device Class Definition for Printing Devices Version 1.1, Universal Serial Bus Mass Storage class Bulk-Only Transport Revision 1.0
Bit rate	480 Mbps (High speed device)
Data encoding	NRZI
Adaptable connector	USB Series B
Cable length	Under 6.6 feet (2 meters)

Safety Approvals

Safety	UL 60950 (U.S.) CSA No. 60950 (Canada)
EMC	FCC Part 15 Subpart B class B (U.S.) ICES003 CSA C108.8 Class B (Canada)
Telecom regulations	FCC Part 68 (U.S.) IC CS03 (Canada)

Supported Memory Cards

Compatible memory cards	CompactFlash™ SmartMedia™ (maximum 128MB) Memory Stick™ (maximum 128MB) Memory Stick PRO™ ² Memory Stick Duo™ ¹ Memory Stick PRO Duo™ ¹ MagicGate® Memory Stick (maximum 128MB) MagicGate Memory Stick Duo ¹ Microdrive™ SD™ (Secure Digital) Card MultiMediaCard miniSD™ card ¹ xD-Picture Card™
Voltage requirements	3.3 V Maximum current is 500 mA

¹ Adapter required

² Copy protection function not supported

Memory Card Slot Compatibility

CF Type II card slot	Compatible with CF+ and CompactFlash Specification 1.4 cards
SmartMedia card slot	Compatible with SmartMedia Standard 2000 cards

Epson Stylus CX5800F

Memory Stick/ MemoryStick PRO card slot	Compatible with Memory Stick Standard version 1.3 or Memory Stick Standard Memory Stick PRO Format Specifications version 1.0 cards
SD/MMC card slot	Compatible with SD Memory Card Specifications / PART1. Physical Layer Specification Version 1.0 cards and MultiMediaCard Standard cards
xD-Picture card Slot	Compatible with xD-Picture card Card Specification Version 1.00 cards

Memory Card Image File Requirements

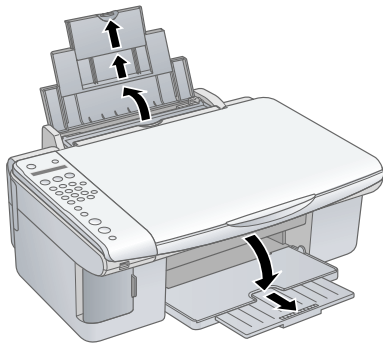
Media format	DCF version 1.0 or 2.0 compliant*
File format	JPEG, DOS FAT (FAT 12 or 16, one partition) taken with a DCF version 1.0 or 2.0 compliant digital camera Supports Exif version 2.21
Image size	80 × 80 pixels to 9200 × 9200 pixels
Number of files	Up to 999

* DCF is the "Design rule for Camera File system" standard

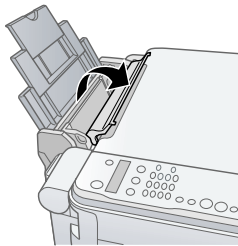
Loading Paper

Single Sheets

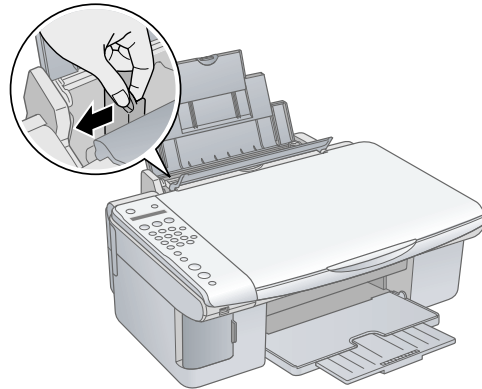
1. Open the paper support and output tray, then slide out the extensions.



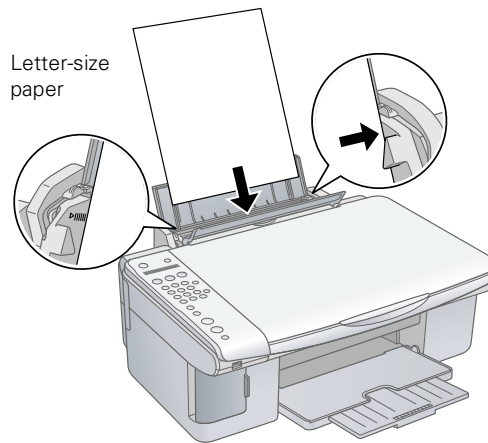
2. Flip the feeder guard forward.



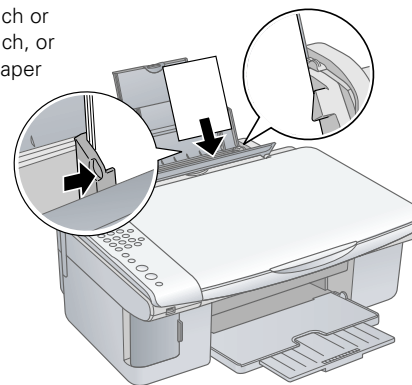
3. Slide the left edge guide to the left.



4. Insert the paper, printable side up, against the right edge guide. Always load it short edge first, even for landscape printing. Make sure the paper lies beneath the tabs and the arrow mark on the left edge guide.



4 x 6-inch or
5 x 7-inch, or
other paper
sizes

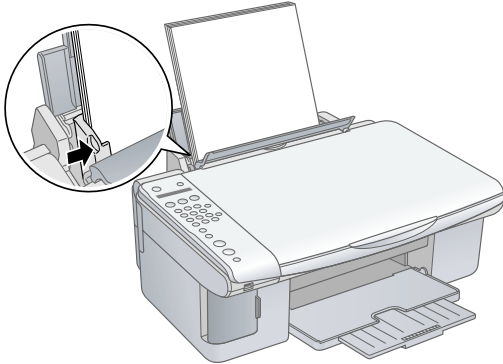


You can load up to 100 sheets of 17 lb plain paper and up to 20 sheets of photo paper. (See page 6 for capacity guidelines on other paper types.)

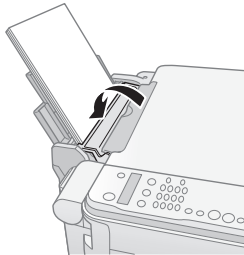
Note:

The type of paper you choose affects the way your printout looks, so be sure to select the correct paper for your job. If you are just making a copy or printing a rough draft of an image, plain paper is fine. However, for the best results, you'll want to use one of Epson's special ink jet papers designed for your printer. For example, your photos will look great printed on Premium Glossy Photo Paper. See "Media" on page 1 for more information.

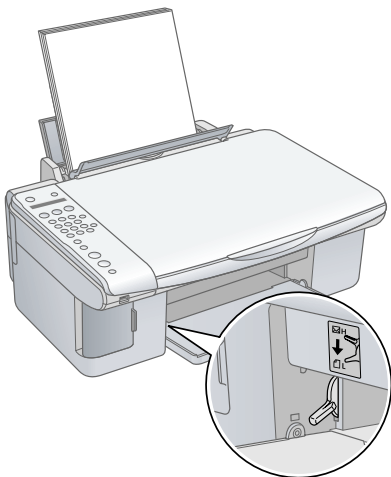
- Slide the left edge guide against the left edge of the paper (but not too tightly).



- Flip the feeder guard back.



- Make sure the paper thickness lever is set down to the L position.

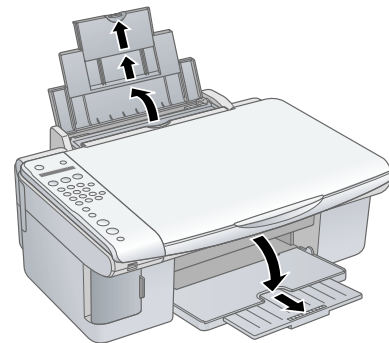


Follow these guidelines when loading paper:

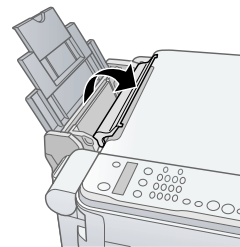
- Don't load paper above the arrow on the left edge guide. Make sure the paper is under the tabs on the left and right edge guides.
- Load the printable side face-up. It's often brighter or whiter than the other side.
- Always load the short edge first, even when printing in landscape mode.
- Load letterhead or preprinted paper into the printer top edge first.
- If you experience paper feeding problems, try loading fewer sheets.
- If you're using special paper, check the package for special loading instructions.

Envelopes

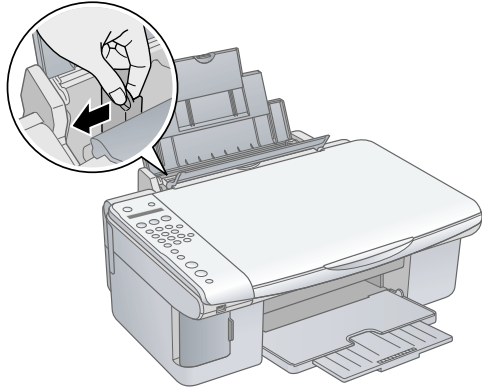
- Open the paper support and output tray, then slide out the extensions.



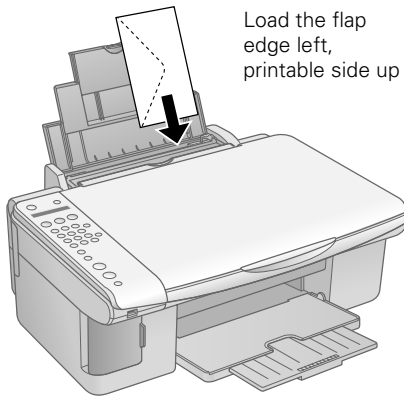
- Flip the feeder guard forward.



- Slide the left edge guide to the left.



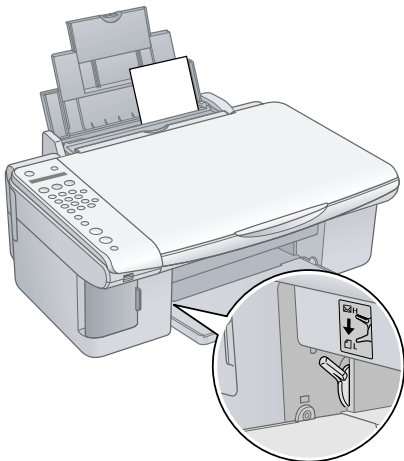
- Load up to 10 envelopes at a time, flap edge left, printable side up, against the right edge guide.



Note:

For best results, press each envelope flat before loading, or load one envelope at a time.

- Slide the left edge guide against the envelopes (but not too tightly).
- Flip the feeder guard back.
- Set the paper thickness lever to the H position.



Select the following settings when printing on envelopes:

- Envelope as the paper Type or Media Type setting
- The correct envelope size as the Size or Paper Size setting
- Landscape as the Orientation setting

Paper Loading Capacity

When loading Epson ink jet papers, follow these capacity guidelines:

Paper type	Loading capacity
Premium Bright White Paper	80 sheets
Premium Glossy Photo Paper Ultra Premium Glossy Photo Paper Premium Semigloss Photo Paper Glossy Photo Paper Matte Paper Heavyweight Double-Sided Matte Paper*	20 sheets
Photo Quality Ink Jet Paper	100 sheets

* Windows only

Selecting the Correct Media Type

The table below lists the settings you should choose for your paper in the printer software:

Paper	Type or Media Type setting
Plain paper Epson Premium Bright White Paper	Plain Paper / Bright White Paper
Epson Matte Paper Heavyweight Epson Double-Sided Matte Paper* Epson Photo Quality Ink Jet Paper	Matte Paper - Heavyweight
Epson Ultra Premium Glossy Photo Paper	Ultra Premium Glossy Photo Paper
Epson Premium Glossy Photo Paper	Premium Glossy Photo Paper
Epson Premium Semigloss Photo Paper	Premium Semigloss Photo Paper
Epson Glossy Photo Paper	Glossy Photo Paper
Envelopes	Envelope

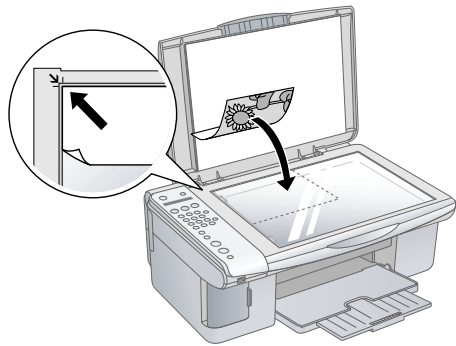
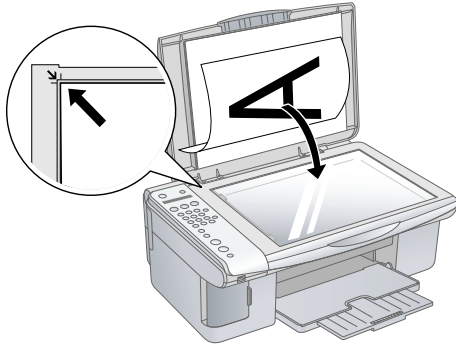
* Windows only

Placing Originals for Copying, Scanning, or Fxing

Caution:

Do not place heavy objects on the document table glass and do not press the glass with too much force.

1. Open the document cover and place your original face-down on the glass, in the upper left corner. Move your original about 0.04 inch (1 mm) away from the top and left edges so all of it will be scanned.



2. Close the document cover gently so that your original does not move.

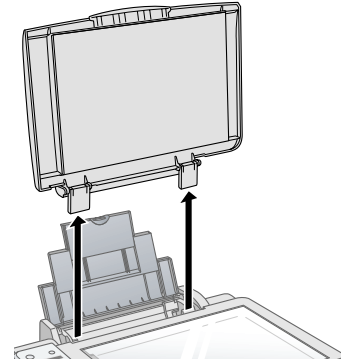
Caution:

Never open the document cover beyond where it stops.

If you need to clean the document table glass, wipe it gently with a soft cloth. Do not spray glass cleaner on the glass.

Placing Large or Thick Documents

When you scan a large or thick document, you can remove the document cover. Just open it and pull it straight up.



If you need to press the document flat while you copy or scan it, do not press too hard and be careful not to move it.

Caution:

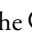
Do not use excessive force on the document cover, and do not twist it diagonally. You may damage the document cover.

When you are done, replace the document cover by inserting the tabs back into the slots.

Copying

Using the Epson Stylus CX5800F buttons, you can make copies using either letter-size (8.5 × 11-inch) plain paper, or letter-size, 4 × 6-inch, or 5 × 7-inch photo paper.

Copying a Document


1. Press the  On button to turn on the Epson Stylus CX5800F. You see a screen like this:



12:00 PM	Y
----------	---
2. Place the document on the glass as described in the left column. Be sure to close the document cover.
3. Load up to 100 sheets of letter-size plain paper. See page 4 for details.
4. Press the Copy button. You see this display:

Copies:1	100%
----------	------
5. If you want your copies automatically reduced or enlarged to fit the loaded paper size (Fit to Page mode), press the Copy button again. The display changes to this:

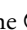
Copies:1	FitPage
----------	---------
6. To make multiple copies (up to 99), press the number keys on the numeric keypad. The display shows the number you select.

Note:

If you need to cancel the number of copies selected, press the  Cancel/Back button. To exit Copy mode, press the  Cancel/Back button again.

7. Press the paper type button to select **Plain Paper**. The light indicates which type is selected.
8. Press the paper size button to select **Letter**.
9. To make a color copy, press the  Start Color button.
To make a black and white copy, press the  Start B&W button.



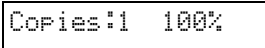
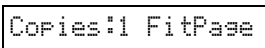
Printing appears on the display and the Epson Stylus CX5800F starts copying.

If you need to stop copying, press the  Cancel/Back button. Do not pull out paper that is being printed; it will be ejected automatically to the output tray.


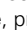
Note:

The copies may not be exactly the same size as the original.

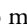
Copying a Photo


1. Press the  On button to turn on the Epson Stylus CX5800F. You see a screen like this: 
2. Place the photo on the glass as described on page 7. Be sure to close the document cover.
3. Load up to 20 sheets of letter-size, 4 × 6-inch, or 5 × 7-inch photo paper. See page 4 for details.
4. Press the Copy button. You see this display: 
5. If you want borderless photos (printed without a white border), press the Copy button again to select **Fit to Page** mode. (If you select 100%, photos are printed with a 0.12-inch [3 mm] border.) The display changes to this: 
6. To make multiple copies (up to 99), press the number keys on the numeric keypad. The display shows the number you select.

Note:

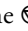
If you need to cancel the number of copies selected, press the  Cancel/Back button. To exit Copy mode, press the  Cancel/Back button again.

7. Press the paper type button to select **Photo Paper**.
8. Press the paper size button to select **Letter, 4" x 6"**, or **5" x 7"**.

9. To make a color copy, press the  Start Color button.

To make a black and white copy, press the  Start B&W button.

Printing appears on the display and the Epson Stylus CX5800F starts copying.

If you need to stop copying, just press the  Cancel/Back button. Do not pull out paper that is being printed; it will be ejected automatically to the output tray.

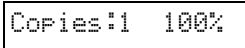


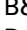
Note:

The copies may not be exactly the same size as the original.

When making a lot of copies, it is a good idea to remove the printed copies from the output tray after every 10 sheets or so.

Speeding Up Copying

If you want to make a copy quickly and do not need high quality, you can print a “draft” copy. The print quality is reduced, but the copy is printed faster.

1. Load plain, letter-size paper.
2. Press the Copy button. You see this display: 
3. Press the paper type button to select **Plain Paper**.
4. Press the paper size button to select **Letter**.
5. Hold down the  Cancel/Back button, then press the  Start Color button (to copy in color) or the  Start B&W button (to copy in black and white). When **Color Draft Mode** or **B/W Draft Mode** appears on the display, release both buttons.

Printing From a Memory Card

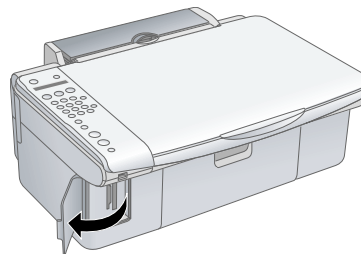
Inserting the Card

1. Make sure the Epson Stylus CX5800F is turned on.

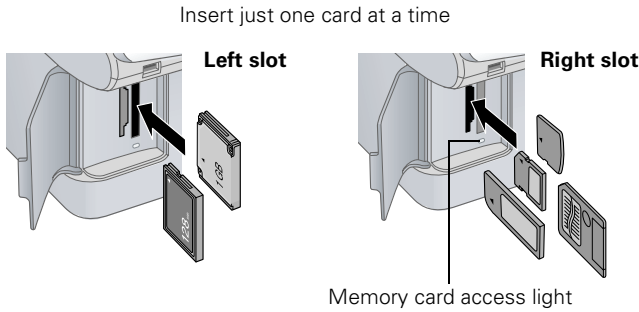
Note:

When you print directly from a memory card, it is best if the Epson Stylus CX5800F is not connected to your computer (or your computer is turned off).

2. Open the memory card door.



3. Make sure the memory card access light is off and that no cards are in any of the slots. Then insert your card into the correct slot. The memory card access light flashes and then stays on.



Slot	Type of card
Left slot	SmartMedia Memory Stick MagicGate Memory Stick MagicGate Memory Stick Duo ¹ MultiMediaCard Memory Stick Duo ¹ Memory Stick PRO ² Memory Stick PRO Duo ¹ SD Card miniSD Card ¹ xD-Picture Card
Right slot	CompactFlash Microdrive

¹ Adapter required
² Copy protection function not supported

4. Close the memory card door. Now you can:
 - Print an index sheet so you can select which photos to print (see the next section)
 - Print all the photos on the card (see page 10)
 - Print photos pre-selected on your camera using DPOF (see page 10)

When you want to remove the card, make sure the memory card access light is not flashing, then pull the card straight out of its slot.

Note:

You can print only in color when printing directly from a memory card; you cannot print in black and white.

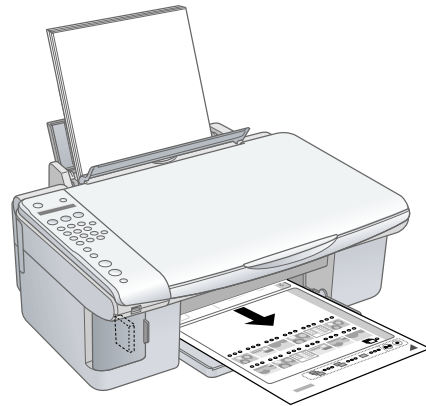
Caution:

Do not remove the card or turn off the Epson Stylus CX5800F while the memory card access light is flashing; you may lose data on the card.

Printing an Index Sheet

1. Make sure your Epson Stylus CX5800F is not connected to your computer (or your computer is turned off).
2. Load several sheets of letter-size plain paper. (Use only letter-size paper to print the index sheet.) Up to 30 images are printed on each page, so if there are more than 30 photos on the memory card, you'll need enough sheets for all the index pages to be printed.
3. Insert the memory card if it is not already in the slot (see the left column).
4. If the light in the **Memory Card** button is not lit, press the **Memory Card** button. The Epson Stylus CX5800F counts the images on your card and you see this display, indicating it is ready to print the index sheet:

1.Im9:92 Prt Idx
5. Make sure **Plain Paper** and **Letter** are selected.
6. Press the **OK** button. The Epson Stylus CX5800F starts printing the index sheet(s). This may take a few minutes.

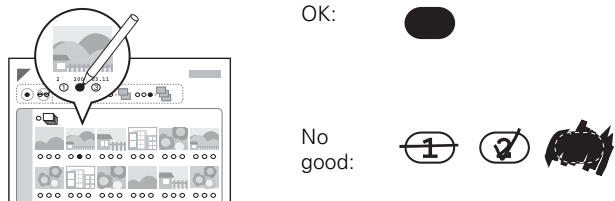


For multiple index sheets, the pages containing the most recent images are printed first. If you want to cancel printing more sheets, press the **Cancel/Back** button.

Now follow the instructions in the next section to select photos and print.

Selecting Photos on the Index Sheet

- Once you have printed the index sheet, use a dark pen or pencil to fill in one of the ovals beneath each photo you want to print to indicate how many copies you want (1, 2, or 3).

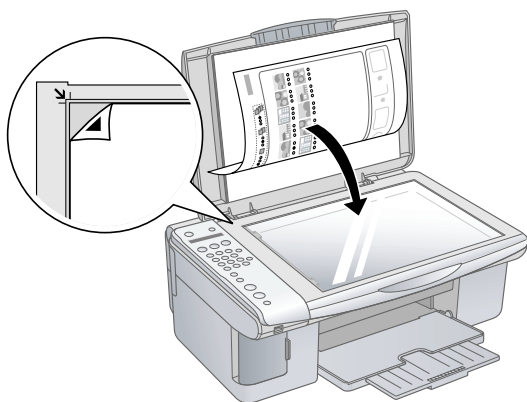


Make sure just one oval is filled in for each selected photo and mark the sheet carefully; once it has been scanned you will not be able to change your selections.

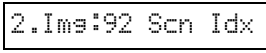
Note:

If you want one copy of all the photos on the index sheet, fill in the ALL oval at the top of the page.

- Place the index sheet face-down on the glass, in the upper left corner, so that the top of the sheet is aligned against the left edge of the glass.



- Close the document cover.
- Load up to 100 sheets of plain paper or up to 20 sheets of photo paper at a time (see page 4 for details). You can load more paper later as necessary to print all your selected photos.
- The display should now look like this, indicating that the Epson Stylus CX5800F is ready to scan the index sheet:



If this setting is not displayed, press the Memory Card button until it is displayed.

- Select Plain Paper or Photo Paper (whichever you loaded).

If you select Plain Paper, the photo(s) print with a white border. If you select Photo Paper, the photos print borderless, to the edge of the paper.

- Select Letter, 4" x 6", or 5" x 7" for the paper size.
- Press the OK button to start printing.

Note:

If you need to stop printing, press the Cancel/Back button.

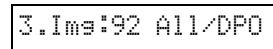
- When you are done printing, remove the memory card by pulling it straight out of its slot.

Printing All Photos or DPOF Photos

Follow the steps below to print one copy of each photo on the card or to print only those photos that were pre-selected with your camera's DPOF feature.

- Insert the memory card (see page 8).
- Load up to 100 sheets of plain paper or up to 20 sheets of photo paper at a time (see page 4 for details). You can load more paper later as necessary to print all your photos.

- Press the Memory Card button repeatedly, until the display looks something like this:



Note:

If the memory card does not contain DPOF information, one copy of all the photos on the card will be printed.

- Select Plain Paper or Photo Paper (whichever you loaded).

If you select Plain Paper, the photo(s) print with a white border. If you select Photo Paper, the photos print borderless, to the edge of the paper.

- Select Letter, 4" x 6", or 5" x 7" for the paper size.
- Press the OK button to start printing.

Note:

If you need to stop printing, press the Cancel/Back button.

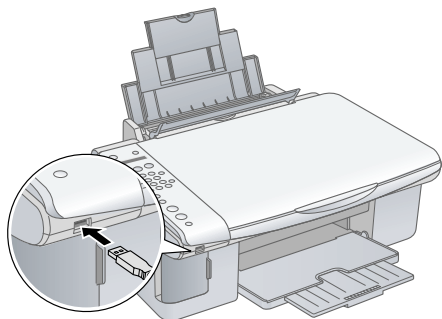
- When you are done printing, remove the memory card by pulling it straight out of its slot.

Printing From a Digital Camera

If your camera is PictBridge- or USB DIRECT-PRINT™-compatible, you can print your JPEG photos by connecting your digital camera directly to your Epson Stylus CX5800F. Your photos must be sized from 80 x 80 pixels to 9200 x 9200 pixels.

- Make sure your Epson Stylus CX5800F is not printing from a computer.
- Remove any memory cards from the slots.

3. Load the type of paper you want to use (see page 4). Load enough sheets for the number of photos you'll be printing.
4. Select **Plain Paper** or **Photo Paper** (whichever you loaded). If you select **Photo Paper**, the photos print borderless, to the edge of the paper.
5. Select **Letter, 4" x 6"**, or **5" x 7"** for the paper size.
6. Connect the USB cable that came with your camera to the USB connector on the front of your Epson Stylus CX5800F.



7. Turn on your camera and select the photos you want to print. Then adjust any necessary settings and print your photos as explained in your camera manual.
8. When you're finished, disconnect your camera and cable from the USB connector. (You cannot use the Epson Stylus CX5800F for any other purpose while your camera is connected.)

Note:

Epson cannot guarantee the compatibility of any camera.

Depending on the Epson Stylus CX5800F settings and your digital camera settings, some combinations of paper type, size, and layout may not be supported. In addition, some of your digital camera settings may not be reflected in the printed output.

Scanning

You can use your Epson Stylus CX5800F to scan a photo or document and save it on your computer or other device, or to fax or e-mail it to someone else.

You can even automatically restore faded color photographs as you scan. See page 12 for details.

You can scan from any TWAIN-compliant application—such as ArcSoft PhotoImpression™—using EPSON Scan (see “Scanning From a Program” on page 12). Or you can start EPSON Scan directly from your computer and save your image to a file (see the next section).

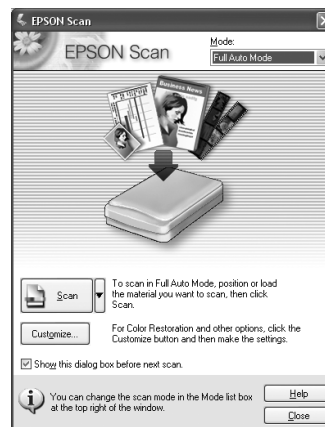
The EPSON Scan software provides three scanning modes for progressive levels of control over your scanned image:

- Full Auto Mode** scans quickly and easily using automatic settings.
- Home Mode** previews your image and provides automatic image adjustments, cropping tools, and preset options for various types of scans.
- Professional Mode** previews your image and lets you manually configure your scan settings with a full array of tools.

Scanning Directly From EPSON Scan

1. Place your original on the document table as described on page 7.
2. Do one of the following to start EPSON Scan:
 - Windows®**: Double-click the EPSON Scan icon on your desktop.
 - Macintosh®**: Double-click EPSON Scan in the Applications folder.

You see the EPSON Scan standby window:



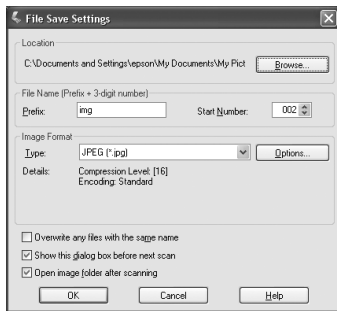
3. If the Mode setting in the upper right corner is set to **Full Auto Mode**, click the **Scan** button.

Note:

If you want to automatically restore a color photo as you scan, click the **Customize** button. See page 12 for instructions.

If you are in Home or Professional Mode, you see a different EPSON Scan settings window. You can change the mode using the Mode selector in the upper right corner. (For details on using Home or Professional Mode, see the on-screen *User's Guide*.)

4. You see the File Save Settings window:



Choose the location where you want to save your scanned file and type a name for it in the Prefix box. Select a file format in the Image Format box.

5. Click OK. The image is scanned and you see its icon in an open folder.

Scanning From a Program

1. Place your original on the scanner as described on page 7.
2. Start your scanning program.

Double-click the program icon from your desktop, if it is available, or do one of the following:

- Windows:** Select **Start > All Programs** or **Programs > program folder > program icon**.
- Mac OS® X:** Open the **Applications** folder, select the **program folder**, and click the **program icon**.

3. Select your program's scanning option. (See your scanning program help for instructions.)

For example, in ArcSoft PhotoImpression, open the File menu and select **Get Photo**. Then click the **Camera/Scanner** icon.

Note:

In some programs, you must select the Epson Stylus CX5800F as the "source" first. If you see a **Select Source** option, choose it and select your Epson Stylus CX5800F there first.

4. Select your Epson Stylus CX5800F. EPSON Scan starts automatically.

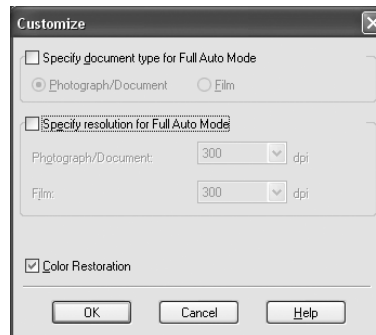
Note:

With Windows XP, do not choose a **WIA** option for your Epson Stylus CX5800F; it will not work correctly.

Restoring Color While Scanning Photos

Using the Color Restoration feature in EPSON Scan, you can automatically transform an old, faded, or badly exposed photo into one with true-to-life color and sharpness as you scan.

1. Place your original photo on the document table as described on page 7.
2. Start EPSON Scan. See page 11 for instructions.
3. When the EPSON Scan window appears, do one of the following, depending on the currently selected scan mode:
 - Home or Professional Mode:** go to step 4.
 - Full Auto Mode:** click the **Customize** button, click the **Color Restoration** checkbox, and click OK. Continue with step 9.



4. Select the basic settings for the type of original(s) you are scanning, then select the destination setting for the way you will use your image(s). See the on-screen *User's Guide* for instructions.
5. Click the **Preview** button to preview your image(s), then select your scan area.
6. Do one of the following to select the Color Restoration option:
 - Home Mode:** Click the **Color Restoration** checkbox.
 - Professional Mode:** Scroll down to the **Adjustments** area and click the **Color Restoration** checkbox.
7. Make any other necessary image adjustments.
8. Size your image as necessary.
9. Click the **Scan** button to scan and restore the color in your image(s).

What happens next depends on how you started EPSON Scan. See the on-screen *User's Guide* for details.

Connecting the Epson Stylus CX5800F to a Phone Line

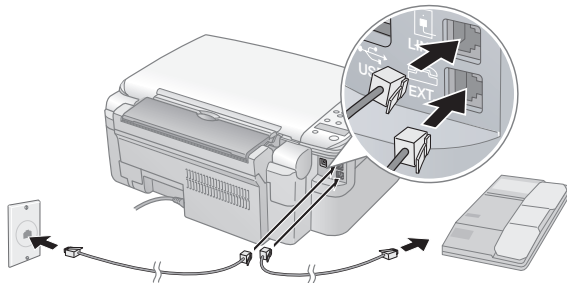
If you are connecting a phone line to the Epson Stylus CX5800F for faxing, connect the phone cable leading from the wall jack to the LINE port, as shown below.

Note:

If you connected the Epson Stylus CX5800F to a DSL phone line, you must install a DSL filter to the line or you won't be able to fax. Contact your DSL provider for the necessary filter.

If you're also connecting the Epson Stylus CX5800F to a telephone or answering machine so you can use them to pick up voice calls on the same phone line, follow these steps:

1. Connect one end of another phone cable to the telephone or answering machine.



2. Connect the other end of the cable to the EXT port on the back of the Epson Stylus CX5800F.
3. To receive voice calls on the phone line, you need to set up your Epson Stylus CX5800F to receive faxes manually. See page 17 for details.

Setting Up Your Fax Features

Before sending or receiving faxes, you may want to create a fax header, select your fax preferences, and set up a speed dial list of frequently used fax numbers.

Creating Header Information

1. Press the Fax button once to enter Fax mode. The Fax button lights up and you see this display:
2. Press the Setup button. You see this display:
3. Press the ▲ or ▼ button, or press the 6 key on the numeric keypad, to display this option:

Enter Fax Number

1.Select Speed D

6.Header & Time

4. Press the OK button. You see this display:
5. Press the OK button again. The display goes blank except for the cursor ().
6. Press the keys on the numeric keypad to enter up to 40 digits of header information. Use the number keys to enter the letters A to Z (in uppercase or lowercase), the numbers 0 to 9, and various symbols.

1.Fax Header Set

Press a key repeatedly to display first the numbers and symbols (if available), then the uppercase and lowercase letters, as indicated on the key. Wait a few seconds or press the ► button to move to the next character space. When you're finished, wait a few seconds or press the ► button to move to a blank space.

Note:

If you need to change a character to the left, press the ◀ button to delete the character and re-enter it. Press the ► button if you need to move the cursor to the right.

7. Press the OK button. You return to the 1.Fax Header Setup display.
8. Press the ▲ or ▼ button, or press the 2 key on the numeric keypad, to display this option:
9. Press the OK button. You see this display (to indicate the two-digit month, day, and year):
10. Press the keys on the numeric keypad to enter the date. You can enter the numbers 0 to 9.
11. Press the OK button. You see this display (to indicate the hour and minute):
12. Press the keys on the numeric keypad to enter the time in a 12-hour format. You can enter the numbers 0 to 9.
13. Press the OK button. You see this display:
14. Press the 1 key or the 2 key on the numeric keypad to select AM (1) or PM (2).
15. Press the OK button. You return to the 2.Date/Time display.
16. If you want to print your fax number in the fax header, press the ▲ or ▼ button, or press the 3 key on the numeric keypad, to display this option:
17. Press the OK button. The display goes blank except for the cursor ().


2.Date/Time

MM'DD:YY

HH:MM AM

1: AM 2: PM

3.Your Phone Num

18. Press the keys on the numeric keypad to enter your fax number. You can enter the numbers 0 to 9, and the characters * and #; up to 64 digits total.
19. Press the OK button.
20. Press the  Cancel/Back button until you return to the first screen.

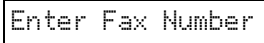
Selecting the Paper Size

Before you receive a fax, be sure to load plain paper and set the Paper Size setting to the size of paper you've loaded. Also make sure the Automatic Reduction setting is set to receive faxes in the desired size. See the next section for details.

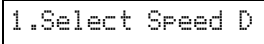
Selecting Send/Receive Settings

If you want to set up a speed dial list, speed dial a fax number, create a fax header, or customize your fax preferences, you can change the fax settings.

1. Press the Fax button once to enter Fax mode. The Fax button lights up and you see this display:



2. Press the Setup button. You see this display:



3. Press the OK button, the ▲ or ▼ button, or a number key on the numeric keypad to display the options shown in the table below.

Setting	Options and descriptions
1.Select Speed Dial	For instructions on speed dialing a fax number, see page 16.
2.Print Report	To print fax information reports, select one of these options, then press the OK button to print the report. 1.Speed Dial List Prints a list of the speed dial entries you created. See page 15 for instructions on creating a speed dial list. 2.Fax Log Prints information about the last 30 fax transmissions. 3.Last Transmission Prints information about the last fax transmission. 4.Reprint Faxes in Memory Reprints all the faxes currently in memory.
3.Speed Dial Setup	See page 15 for instructions on creating a speed dial list.

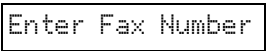
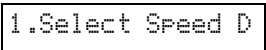
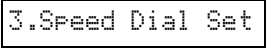
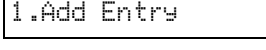
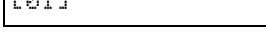

Setting	Options and descriptions
4.Scan&Print Setup	To change various settings, press the OK button, then select one of these options. Press the OK button to select the option, then press the ▲ or ▼ button to change the setting. 1.Resolution Adjusts the fax quality for the original you're faxing. (You can also select the fax resolution by pressing the Fax button twice.) Standard (default) Fine Photo 2.Contrast Adjusts the contrast for the original you're faxing. (You can also select the fax contrast by pressing the Fax button three times.) Normal (default) Light Dark 3.Paper Size Indicates the size of the paper loaded in the Epson Stylus CX5800F for printing received faxes. Letter (8.5 × 11; default) Legal (8.5 × 14) A4 (8.3 × 11.7) 4.Automatic Reduction Indicates whether large received faxes are reduced in size to fit on the selected Paper Size or printed at their original size on multiple sheets. On (default) Off 5.Last Transmission Report Indicates whether or when the Epson Stylus CX5800F prints a report for outgoing faxes. Off (turns off report printing) On Error (prints reports only when an error occurs; default) On Send (prints reports for every fax you send)
5.Communication	To change various phone settings, press the OK button, then select one of these options. Press the OK button to select the option, then press the ▲ or ▼ button to change the setting. 1.Dial Mode Indicates the type of phone system to which you've connected the Epson Stylus CX5800F. Tone (default) Pulse 2.DRD Indicates the type of answer ring pattern you want to use to receive faxes. (You must have set up your phone system to use different ring patterns to select an option other than All.) All (default) Single Double Triple Double & Triple (continued)

Setting	Options and descriptions
5.Communication (continued)	<p>3.ECM: On/Off Indicates whether you use Error Correction Mode to automatically request retransmission of fax data that is received with detected errors. On (default) Off</p> <p>4.V.34: On/Off Indicates the speed at which you transmit faxes. On is 33.6 Kbps and Off is 14.4 Kbps. On (default) Off</p> <p>5.Rings to Answer Indicates the number of rings that must occur before the Epson Stylus CX5800F automatically receives a fax. 4 (default) 1, 2, 3, 5, 6, 7, 8, or 9</p>
6.Header & Time	For instructions on creating fax header information, and setting the date and time, see page 13.
7.Setup	For instructions on using the maintenance utilities, see page 17 through page 20.

- When you're finished, press the **⊗ Cancel/Back** button to return to the first screen.

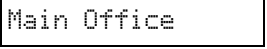
Setting Up Your Speed Dial List

You can create a speed dial list of up to 60 fax numbers so you can quickly select them for faxing. You can also add names to identify the recipients and print the speed dial list.


- Press the **Fax** button once to enter Fax mode. The **Fax** button lights up and you see this display: 
- Press the **Setup** button. You see this display: 
- Press the **▲** or **▼** button, or press the **3** key on the numeric keypad, to display this option: 
- Press the **OK** button. You see this display: 
- Press the **OK** button again. You see this display: 
- Press the **OK** button again. The screen displays **Telephone Number** briefly, then goes blank except for a cursor (**_**).
Press the keys on the numeric keypad to enter the fax number of the first speed dial entry. You can enter the numbers 0 to 9, and the characters * and #; up to 64 digits total. 

Note:


If you need to change a character to the left, press the **◀** button to delete the character and re-enter it. Press the **▶** button if you need to move the cursor to the right.

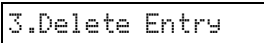
- Press the **OK** button again. The screen displays **Name** briefly, then goes blank except for a cursor (**_**).

- Press the keys on the numeric keypad to enter a name for the speed dial entry (up to 30 characters). Use the number keys to enter the letters A to Z (in uppercase or lowercase), the numbers 0 to 9, and various symbols.

Press a key repeatedly to display first the numbers and symbols (if available), then the uppercase and lowercase letters, as indicated on the key. Wait a few seconds or press the **▶** button to move to the next character space. When you're finished, wait a few seconds or press the **▶** button to move to a blank space.

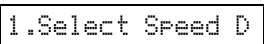
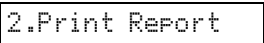

- Press the **OK** button. You see this display, indicating the next available speed dial entry number: 
- If you want to add another speed dial entry, repeat steps 6 through 10.
When you're finished, press the **⊗ Cancel/Back** button to return to the **3.Speed Dial Setup** menu.

Editing or Deleting a Speed Dial Entry

- To edit a speed dial entry, press the **OK** button. Then press the **▲** or **▼** button, or the **2** key on the numeric keypad, to display this option: 
- Press the **OK** button. You see the first speed dial entry number and name displayed.
- Press the **OK** button to edit this entry, or press the **▲** or **▼** button to select a different entry and press the **OK** button.
- The phone number for the selected entry is displayed. Press the **▶** button to move to the digits you want to edit. Press the number keys to enter new numbers or press the **◀** button to delete digits to the left. When you're finished, press the **OK** button.
- The name for the selected entry is displayed. Edit the name the same way as in step 4. When you're finished, press the **OK** button to return to the **2.Edit Entry** display.
- Press the **⊗ Cancel/Back** button to return to the **3.Speed Dial Setup** menu.

- To delete a speed dial entry, press the OK button. Then press the ▲ or ▼ button, or the 3 key on the numeric keypad, to display this option: 
- Press the OK button. You see the first speed dial entry number (such as [1]) and name displayed.
- Press the OK button to delete this entry, or press the ▲ or ▼ button to select a different entry and press the OK button to delete it.

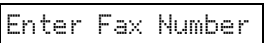

Printing Your Speed Dial List

- Press the Ⓞ Cancel/Back button to return to the first fax screen.
- Press the Setup button. You see this display: 
- Press the ▲ or ▼ button, or press the 2 key on the numeric keypad, to display this option: 
- Press the OK button. You see this display: 
- Press OK to print the speed dial list.

Sending a Fax

Before you fax, place your original document or photo on the document table glass as described on page 7. Then send your fax by manually entering a fax number, redialing the previous fax number, or selecting an entry from your speed dial list.

Manually Entering or Redialing a Fax Number

- Press the Fax button once to enter Fax mode. The Fax button lights up and you see this display: 
- Press the keys on the numeric keypad to enter the fax number. You can enter the numbers 0 to 9 and the characters * and #; up to 64 digits total. 

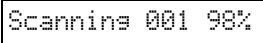
Note:

If you need to change a character to the left, press the ◀ button to delete the character and re-enter it. Press the ▶ button if you need to move the cursor to the right.

If you want to redial the last fax number you used, press the Redial/Pause button instead of entering a fax number. The last fax number appears on the screen.


- To send a black-and-white fax, press the ◊ Start B&W button.

To send a color fax, press the ◊ Start Color button. (If the receiving fax machine cannot print in color, the fax prints in black-and-white.)

You see this display during faxing: 

Note:

If you need to cancel faxing at any time, press the Ⓞ Cancel/Back button.

- After your original is scanned, you see this screen: 

If you do not need to fax another page, press the 2 key (for No). The Epson Stylus CX5800F dials the fax number and faxes your document.

Note:

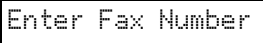
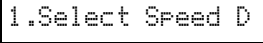
If the fax number is busy or there is some other connection problem, you see an error message and the Epson Stylus CX5800F returns to the first fax mode screen. The Epson Stylus CX5800F redials the number after one minute. Wait for the redial, or check your connection and settings and try faxing again.

If you need to fax another page, press the 1 key (for Yes). Open the document cover, remove your first original, place your next original, and close the document cover. Then press the OK button to fax the next page. Repeat this step to fax all the necessary pages. The fax connection stays open until you're finished.

Note:

If you're sending a color fax, or a large document that fills up the memory area, the Epson Stylus CX5800F scans and faxes one page at a time. It then asks if you want to send another page.

Speed Dialing a Fax Number

- Press the Fax button once to enter Fax mode. The Fax button lights up and you see this display: 
- Press the Setup button. You see this display: 
- Press the OK button. You see the first speed dial entry name or number from your list displayed.
- To fax to the first speed dial entry, press the OK button. Then go to step 5.

To select a different speed dial entry, press the ▲ or ▼ button to display the entry, or press the number key that corresponds to the speed dial entry number. Press the OK button, then go to step 5.

- To send a black-and-white fax, press the ◊ Start B&W button.

To send a color fax, press the **Start Color** button. (If the receiving fax machine cannot print in color, the fax prints in black-and-white.)

You see this display during faxing:

Note:

If you need to cancel faxing at any time, press the **Cancel/Back** button.

6. After your original is scanned, you see this screen:

If you do not need to fax another page, press the **2** key (for No). The Epson Stylus CX5800F dials the fax number and faxes your document.

Note:

If the fax number is busy or there is some other connection problem, you see an error message and the Epson Stylus CX5800F returns to the first fax mode screen. The Epson Stylus CX5800F redials the number after one minute. Wait for the redial, or check your connection and settings and try faxing again.

If you need to fax another page, press the **1** key (for Yes). Open the document cover, remove your first original, place your next original, and close the document cover. Then press the **OK** button to fax the next page. Repeat this step to fax all the necessary pages.

Note:

If you're sending a color fax, or a large document that fills up the memory area, the Epson Stylus CX5800F scans and faxes one page at a time. It then asks if you want to send another page.

Receiving Faxes

The Epson Stylus CX5800F automatically receives and prints faxes in Auto Answer mode. However, you may want to receive faxes manually if you connected the Epson Stylus CX5800F and a phone or answering machine to a phone line that also receives voice calls. Then you can check for a fax tone from the sending fax machine and press a button on the Epson Stylus CX5800F to receive the fax, or allow your answering machine to determine if the call is an incoming fax.

Note:

Make sure you selected the **Paper Size** setting that matches the size of paper you've loaded. If the incoming fax pages are larger than the paper size you loaded, the fax size is reduced to fit or printed on multiple pages, depending on the **Automatic Reduction** setting you select. See page 14 for details.

Selecting the Answer Mode

The Epson Stylus CX5800F tells you whether Auto Answer is turned on or not on the first screen:

Y: Auto Answer is turned on

To change the answer mode, press the **Answer Mode** button. The Y or N changes on the first screen. Press **Answer Mode** again to change it back.

N: Auto Answer is turned off

Note:

You can select the number of rings that must occur before the Epson Stylus CX5800F receives a fax using the **Rings to Answer** setting. See page 14 for details.

Receiving a Fax

When the Epson Stylus CX5800F receives a fax with Auto Answer mode turned on, the message **Receiving** appears on the display.

When the Epson Stylus CX5800F receives a fax in manual answer mode, the connected phone begins ringing. Once you answer the phone to confirm that the call is a fax, press the **Start B&W** or **Start Color** button to receive the fax. The message **Receiving** appears on the display.

After the Epson Stylus CX5800F receives all the pages, it begins printing the fax. When it's finished, you see the message **Complete**.

Note:

If you run out of paper during printing, you see the error message **Paper out**. Load more paper and press the **OK** button so printing can continue. If you see any other error messages, see page 22.

Checking the Print Head Nozzles

If your printouts are faint or have gaps in them, some of the nozzles in the print head may be clogged. Follow the steps below to check the print head nozzles using the control panel.

1. Load letter-size paper in the sheet feeder.
2. Press the **On** button to turn on the Epson Stylus CX5800F, or press the **Cancel/Back** button until you see a screen like this:
3. Press the **Setup** button. You see this display:
4. Press the **▲** or **▼** button, or press the **3** key on the numeric keypad, to display this option:

- Press the **OK** button. The Epson Stylus CX5800F prints a test pattern like this:

Print head does not need to be cleaned:



Print head needs to be cleaned:



- Press the **Cancel/Back** button to return to the first screen.

If the pattern does not look good, try cleaning the print head as described below.

Cleaning the Print Head

If your printouts are unexpectedly light or faint, or you notice light or dark bands across your printout, you may need to clean the print head. This unclogs the nozzles so they can deliver ink properly. Run a nozzle check (as described above) to see if the print head needs cleaning.

Note:

Print head cleaning uses ink, so clean it only if quality declines and the nozzle check indicates that the print head needs to be cleaned.

If you see an ink error message on the display, you cannot clean the print head. In this case, press the **OK** button and replace the appropriate ink cartridge first. See the next section for details.

- Press the **On** button to turn on the Epson Stylus CX5800F, or press the **Cancel/Back** button until you see a screen like this:

12:00 PM Y
- Press the **Setup** button. You see this display:

1.Load/Eject
- Press the **▲** or **▼** button, or press the **4** key on the numeric keypad, to display this option:

4.Head Cleaning
- Press the **OK** button. The Epson Stylus CX5800F runs a head cleaning cycle and the message **Cleaning . . .** appears on the display.

Caution:

Never turn off the Epson Stylus CX5800F while head cleaning is in progress. You may damage it.

- When the display returns to **4.Head Cleaning**, run a nozzle check to verify that the print head is clean. See the left column for details.
- If there are still gaps or lines, or the test patterns are faint, run another cleaning cycle and check the nozzles again.

Note:

If you don't see any improvement after cleaning the print head four or five times, turn off the Epson Stylus CX5800F and wait overnight. This lets any dried ink soften. Then try cleaning the print head again. If quality still does not improve, one of the ink cartridges may be old or damaged and needs to be replaced. See page 19 for details.

Caution:

If you do not use your Epson Stylus CX5800F often, it is a good idea to print a few pages at least once a month to maintain good print quality.

Checking the Ink Levels

You can check the approximate level of ink in your cartridges using the control panel.

- Press the **On** button to turn on the Epson Stylus CX5800F, or press the **Cancel/Back** button until you see a screen like this:

12:00 PM Y
- Press the **Setup** button. You see this display:

1.Load/Eject
- Press the **▲** or **▼** button, or press the **2** key on the numeric keypad, to display this option:

2.Ink Levels
- Press the **OK** button. You see a display like this:

C:50% M:50% Y:50

If one or more cartridges are low on ink, you see a display like this:

C:Ink low M:50%
- Press the **OK** or **Cancel/Back** button to return to the first screen.

If you need to replace an ink cartridge, see the next section.

Note:

You can also check the ink levels using software when the Epson Stylus CX5800F is connected to your computer. See the on-screen *User's Guide* for instructions.

Replacing Ink Cartridges

If you see a message like this on the display, one or more cartridges are low on ink:

Cyan ink low->Pr

When you see a message like this on the display, you need to replace one or more cartridges:

Cyan ink out->Pr

You cannot print when a cartridge is empty.

Note:

You'll also see a low ink or ink out message on your computer screen when you print from your computer.

You can purchase genuine Epson ink and paper from an authorized Epson reseller. To find the nearest reseller, please call 800-GO-EPSON (800-463-7766). To purchase online, visit www.epsonstore.com (U.S. sales only). In Canada, please call 800-463-7766 for reseller referral.

Use these part numbers when you order or purchase new ink cartridges:

Color	Part number
Black	T060120
Cyan	T060220
Magenta	T060320
Yellow	T060420

Caution:

Leave the empty cartridge installed until you have obtained a replacement, or the ink remaining in the print head nozzles may dry out.

We recommend that you use genuine Epson cartridges. The use of other products may affect your print quality and could result in printer damage. Yields vary considerably based on images printed, print settings, paper type, frequency of use, and temperature. The printer ships with full cartridges and part of the ink from the first cartridges is used for priming the printer.

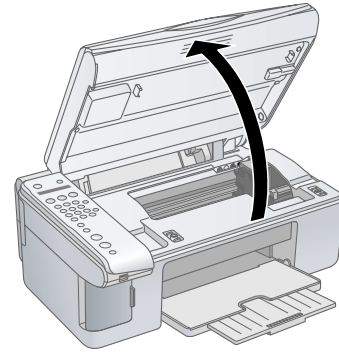
1. Press the **On** button to turn on the Epson Stylus CX5800F, or press the **Cancel/Back** button until you see a screen like this:
2. Press the **Setup** button. You see this display:
3. Press the **▲** or **▼** button, or press the **5** key on the numeric keypad, to display this option:
4. Press the **OK** button.

12:00 PM Y

1.Load/Eject

5.Replace Cartri

5. Make sure that the document cover is closed, then open the scanner.

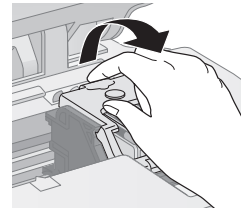


Caution:

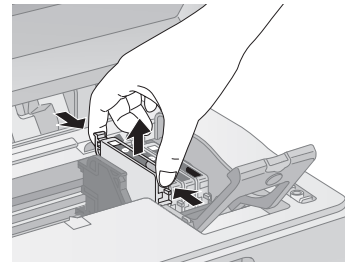
Do not open the scanner when the document cover is open.

Do not move the print head by hand; this may damage the Epson Stylus CX5800F. Always select **5.Replace Cartridge** from the display to move it.

6. Open the cartridge cover.



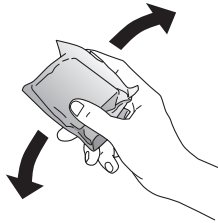
7. Squeeze the tab at the back of the cartridge and lift it straight out. Dispose of it carefully. Do not take the used cartridge apart or try to refill it.



Warning:

If ink gets on your hands, wash them thoroughly with soap and water. If ink gets into your eyes, flush them immediately with water.

8. Before you open the new ink cartridge package, shake it four or five times. Then remove it from the package.

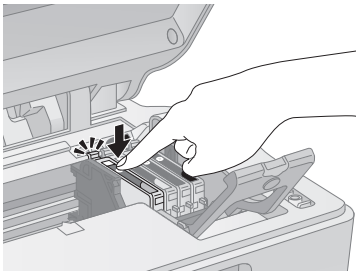


Caution:

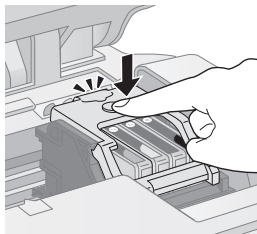
Do not touch the green chip on the front of the cartridge. This can damage the ink cartridge.



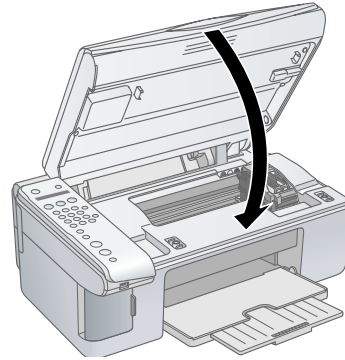
9. Place the new ink cartridge into the cartridge holder and push it down until it clicks into place.



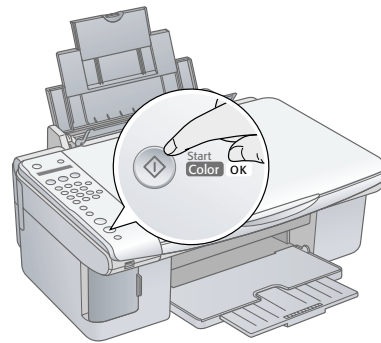
10. Replace any other cartridges that need to be replaced.
11. Close the ink cartridge cover and press it until it clicks into place.



12. Close the scanner.



13. Press the OK button. The Epson Stylus CX5800F begins charging ink and **Charging** appears on the display.



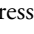
Charging takes about one minute. When it's finished, **5.Replace Cartridge** appears on the display.

Caution:

Never turn off the Epson Stylus CX5800F while **Charging** appears on the display or you'll waste ink.

Note:

If you see an ink cartridge error message on the display, the ink cartridge may not be installed correctly. Press the OK button and reinstall the ink cartridge until it clicks into place.

14. Press the  **Cancel/Back** button until you return to the first screen.


Aligning the Print Head

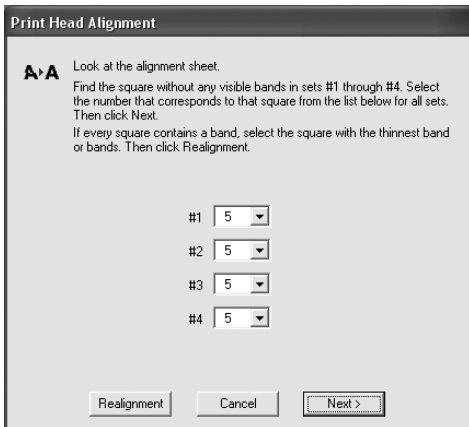
If your printouts look grainy or blurry, or you see light or dark horizontal banding, you may need to align the print head.

Note:

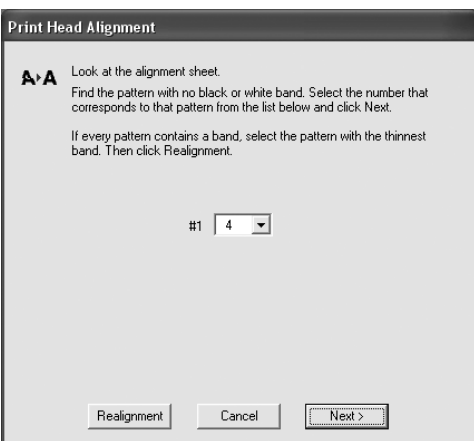
Banding may also occur if your cartridges are low on ink or you need to clean the print head.

You can also align the print head using the control panel buttons. Press the **Setup** button, select **6.Head Alignment**, and follow the instructions on the display.

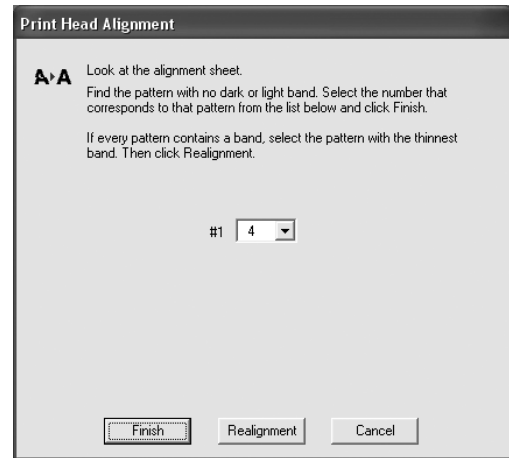
1. Turn on the Epson Stylus CX5800F.
2. Load several sheets of paper.
3. **Windows:** Right-click the  printer icon on your taskbar (in the lower right corner of your screen). Select **Print Head Alignment**.
Macintosh OS X: Open the Applications folder and select EPSON Print Utility. Select Stylus CX5800F in the printer list, click OK, and select Print Head Alignment.
4. Follow the instructions on the screen to print a vertical alignment sheet. You see a window like this one:



5. Look at the four sets of patterns in your printout. For each set, if you see a pattern with no visible vertical lines, enter its number in the corresponding box on the screen and click **Next**.
If you can't find an aligned pattern, choose the one that's closest to being aligned. Click **Realignment** and then **Print** to print another alignment sheet and repeat this step.
6. Click **Print** to print a black horizontal alignment sheet. After it's printed, you see a window like this one:



7. Look at the printout and select the pattern with no gap or line between the rectangles. Enter the number for that pattern in the box on the screen and click **Next**.
If you can't find an aligned pattern, choose the one that looks the best. Then click **Realignment** to print another alignment sheet and repeat this step.
8. Click **Print** to print a color horizontal alignment sheet. After it's printed, you see a window like this one:



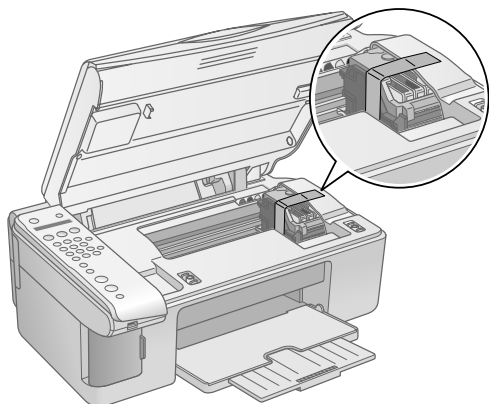
9. Look at the printout and find the pattern with no gap or line between the rectangles and enter its number in the box on the screen.
If you can't find an aligned pattern, choose the one that looks the best. Then click **Realignment** to print another alignment sheet and repeat this step.
10. Click **Finish** to close the Print Head Alignment Utility.

Transporting the Epson Stylus CX5800F

If you need to ship your Epson Stylus CX5800F all-in-one, you must prepare it for transportation by packing it in its original box or one of a similar size.

1. Turn off the Epson Stylus CX5800F.
2. Remove any paper from the sheet feeder and close the paper support.
3. Unplug the power cord from the electrical outlet. Then disconnect the USB cable from the Epson Stylus CX5800F.
4. Open the scanner section and make sure the ink cartridge holder is in the home position on the right.

- Secure the ink cartridge holder (print head) to the case with tape.



Caution:

Be sure to remove the tape after installing the printer in its new location.

- Close the scanner section, push in the output tray extension, and close the output tray.
- Repack the Epson Stylus CX5800F in the original box using the protective materials that came with it.

Keep the Epson Stylus CX5800F level as you transport it.

After transporting the Epson Stylus CX5800F, remove the tape securing the print head, plug in the Epson Stylus CX5800F, and turn it on. If you notice a decline in print quality, clean the print head (see page 18); if output is misaligned, align the print head (see page 20).

Error Messages

Display message	Cause and solution
Paper out -> Load paper into the sheet feeder, then press the OK button.	Load or reload paper in the sheet feeder and press the OK button to continue. See page 4 for details.
Paper jam -> Press the OK button. Remove any remaining jammed paper by hand.	See the <i>User's Guide</i> for instructions on clearing the paper jam.
[Cyan, Magenta, Yellow, Black] ink low -> Press the OK button to begin ink cartridge replacement.	Ink is low in one or more of the indicated cartridges. See page 19 for replacement instructions.
[Cyan, Magenta, Yellow, Black] ink out -> Press the OK button to begin ink cartridge replacement.	Ink is out in one or more of the indicated cartridges. See page 19 for replacement instructions.
No [Cyan, Magenta, Yellow, Black] ink cartridge -> Press the OK button to install a new ink cartridge.	An ink cartridge is not installed or is installed incorrectly. See page 19 for replacement instructions.

Display message	Cause and solution
[Cyan, Magenta, Yellow, Black] Ink cartridge error -> Cartridge replacement is necessary. Press the OK button to begin.	An ink cartridge that is not supported by the Epson Stylus CX5800F is installed. See page 19 for replacement instructions.
No memory card	A memory card is inserted that is not supported by the Epson Stylus CX5800F. Remove the incompatible memory card. See page 3 for details.
No photos on memory card	The inserted memory card does not contain any valid images. See page 4 for a list of compatible card and image types.
No index sheet detected or sheet placed incorrectly. Correct the sheet placement and try again.	An index sheet was not recognized because it is not positioned correctly. Align the top of the sheet with the left edge of the glass. See page 10 for details.
No photos selected or photos marked incorrectly. Select photos correctly and try again.	No marks are detected on the index sheet or the sheet includes more than one mark for an image. Remove the index sheet, mark it correctly, and try again. See page 10 for details.
Memory card data does not match index sheet. Replace the card or index sheet and try again.	The index sheet does not match the photos on the memory card. Remove the card and insert the one used to print the index sheet (see page 8), or place the correct index sheet on the glass (see page 10).
Paper thickness lever is set for envelope printing.	The paper thickness lever is set to the <input checked="" type="checkbox"/> H position. If you are printing on envelopes, press Start Color or Start B&W to continue. Otherwise, set the lever to the <input type="checkbox"/> L position.
Paper thickness lever is set for printing sheets of paper.	The paper thickness lever is set to the <input type="checkbox"/> L position. If you are printing on paper sheets, press Start Color or Start B&W to continue. If you're printing on envelopes, set the lever to the <input checked="" type="checkbox"/> H position.
Service required. See your documentation for details.	An Epson Stylus CX5800F part needs to be replaced. Contact your local authorized servicer or contact Epson for a referral.
Printer error -> or Scanner error -> See your documentation and call service if necessary.	There is a problem with the Epson Stylus CX5800F. Turn it off and then back on. If the error does not clear, contact your local authorized servicer or contact Epson for a referral.

Related Documentation

CPD-20212	Epson Stylus CX5800F <i>Start Here</i> sheet
CPD-20213	Epson Stylus CX5800F <i>Basics Guide</i>
CPD-20214	Epson Stylus CX5800F CD-ROM (includes on-screen <i>User's Guide</i>)