



You can rely on Defy

Autodry 600

Premium



www.defy.co.za

OWNER'S MANUAL

PAGE INDEX

- 2 Introduction
- 2 Installation
 - Unpacking
 - Damage
 - Location
 - Levelling
 - Venting exhaust air
- 3 Advice column
 - Precautions
 - Unsuitable materials
 - Loading
 - Recommended programmes
 - Fabric care
- 4 Control panel
- 4 Using the dryer
 - Start
 - Cancelling a programme
 - Adding more laundry
 - Changing a programme
 - Programme end
 - Cleaning
- 5 Features
 - Programmes
 - Anti-crease
 - Buzzer
 - Control panel lock
 - Programme progress indicators
 - The door
 - Fluff filter
 - Cleaning the humidity sensors
- 6 Trouble shooting
- 7 Technical specifications
- 7 Service centres
- 8 Warranty

1 Introduction

You are now the proud owner of one of the finest and most modern tumble dryers that today's technology can produce.

Please read all the instructions carefully as they contain information on how to operate and care for your dryer so that you may gain the maximum benefit from it.

Store this book in a safe place for future reference.

2 Installation

Unpacking.

Remove all packaging material, accessories and documentation from the dryer.

Dispose of the packaging in a responsible manner. Plastic bags should be cut up to prevent children playing with them and accidentally suffocating.

Damage.

Do not use the dryer if it has been damaged in transit. Report the damage to your dealer, who will take the necessary corrective action.

Location.

The dryer should be located in a well ventilated room, away from heat sources such as gas, oil or coal fired appliances.

Position the dryer on a flat, even, uncarpeted floor.

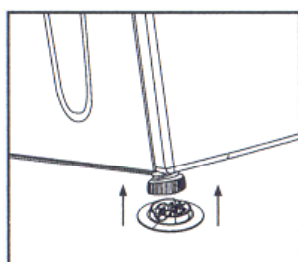
The dryer vents to the outside and utilises a dedicated air outlet hose for this purpose. For this reason it is best to position the dryer near an outside facing wall or window.

Ensure that an electrical supply point is within easy reach of the power cord.

Levelling.

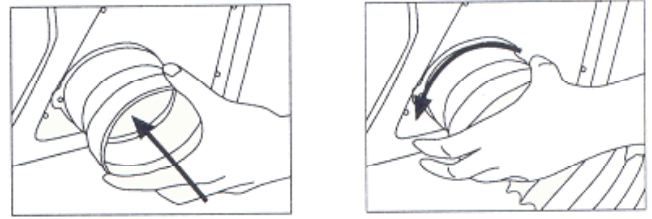
Level the dryer by turning the adjustable feet either in or out.

Two rubber friction pads are supplied and may be fitted under the adjustable feet to prevent any movement on slippery surfaces.

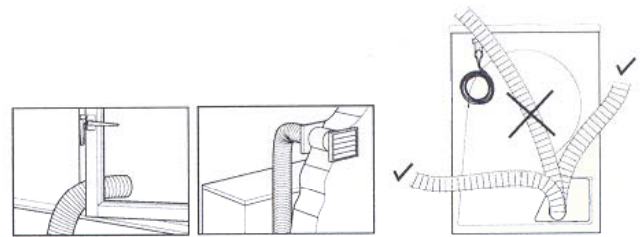


Venting exhaust air to the outside.

The dryer must be vented to the outside, either by means of the flexible exhaust tube supplied or via a permanent installation.



Insert the adaptor piece into the exhaust outlet at the rear of the dryer, and screw one end of the flexible exhaust tube into the adaptor.



The other end of the exhaust tube may be directed through an open window or connected to a wall mounted vent.

The sketch above shows the preferred direction the tube should follow.

The exhaust air may not be directed into chimneys, flues or fireplaces.

If required, a permanent exhaust pipe may be installed and should be routed with as few bends as possible so as not to restrict the airflow.

The maximum length of such a pipe is given below.

MAX. LENGTH OF PIPE	5.0m
1 elbow at 45°	4.7m
1 elbow at 90°	4.4m
1 elbow at 90° short turn	2.3m
1 wall mount vent with automatic louvres.	3.0m

Electrical connection.

The dryer must be plugged into a dedicated 230V. 15A. earthed wall socket.

Do not use a double adaptor.

The manufacturer and seller do not accept responsibility for any damage due to incorrect electrical connection.

If the power cord needs replacing, use only a genuine type 'X' cord available from the nearest Defy Service Centre.

3 Advice column

Precautions

- Do not allow children or the infirm to operate the dryer without supervision.
- Pets and children have been known to climb into tumble dryers. Please check the drum before use.

The following items must NOT be placed in the Dryer as they pose a fire risk:

- Chemically impregnated fabrics such as mops or cleaning cloths saturated with wax or inflammable solvents.
- Rubber backed articles, rubber boots, and tennis shoes.
- Clothes fitted with foam rubber pads.
- Garments treated with dry-cleaning fluid or a combustible solution.
- Durable pleated items other than permanent press.
- Fibre-glass or leather items.
- Cushions, quilts and similar stuffed items as these accumulate heat.
- Gas lighters that have accidentally been left in pockets.

Loading

- Do not overload the machine. We recommend loading the drum to the halfway mark.
- Do not place dripping wet articles in the dryer. As much water as possible should be extracted before placing them in the drum.
- Clothes should not be loaded in a tangled condition as this will prolong the drying time. Shake out each article and place it in the drum.
- Mix small and large articles for faster more even drying.
- It is recommended that synthetic whites and coloured articles are not mixed until their colourfastness has been established.
- Add a few hand towels to act as buffers when drying a very small load.
- Blankets and other large items tend to retain a certain position in the drum. To ensure thorough drying it may be necessary to remove these articles midway during the drying cycle and reposition them before continuing.
- Bulky duvets and eiderdowns may not be suitable even if the dry weight of the item is within the prescribed limits. Their size may prevent them from tumbling.

Programme recommendations

Textile type	Programme	Load
White and coloured Cotton and Linen, Towels, Shirts, Sheets, Table cloths, Napkins.	Ready to wear Ready to iron	3-6kg.
Easy care, Synthetics, Mixed fabrics.	Ready to wear	1.5-3kg

If the dryness level is not satisfactory set the programme selector to one of the timed programmes. 60 minutes....40 minutes.....10 minutes

Blankets.

Extract most of the water before drying. Remove the blanket while it is still slightly damp. Reshape and hang out to dry. When dry, brush to raise the nap and press the binding with a warm iron.

Cotton T-shirts and Knit underwear.

Dry only to a slightly damp stage. If these articles are allowed to tumble too long, the knitted cotton may shrink. This may be corrected by re-dampening or by wearing the article.

Curtains and slip covers.

Remove from the dryer while slightly damp. Iron and hang immediately.

Chenille and candlewick bedspreads.

Dry only one bedspread at a time. Remove as much moisture as possible before placing the bedspread in the dryer. Dry completely.

Lingerie.

Use the Delicate programme. Remove soon after drying to minimize creasing. To avoid tangling, it is recommended that nylon stockings are enclosed in a nylon mesh bag during drying.

Knitted synthetics.

Use a dry towel as a buffer. as rubbing surfaces may cause small beads to form, it is advisable to turn these articles inside out.

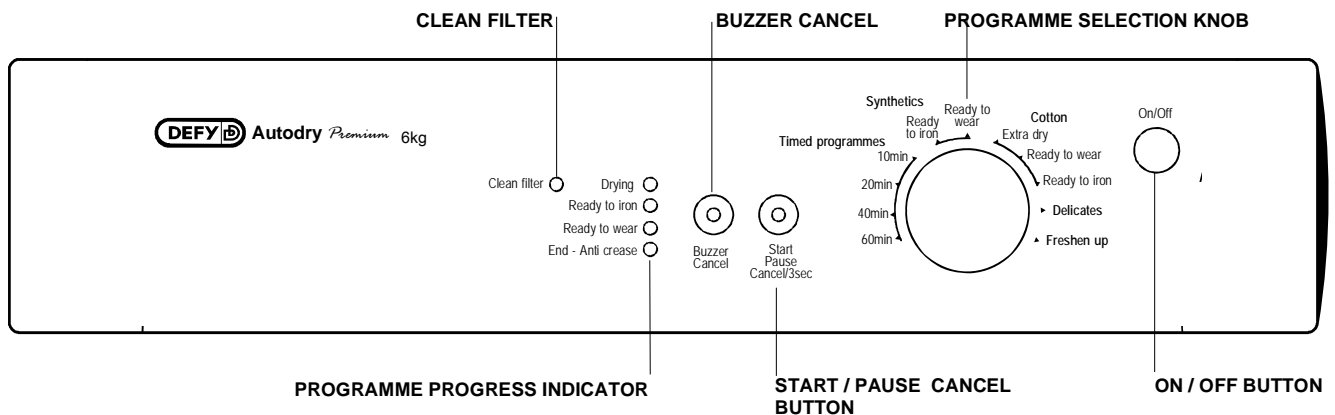
Corduroy.

Turn inside out. Remove while still damp and re-shape.

Silks, Dacrons and nylons.

Place in the dryer separately. Do not over-dry.

4 Control panel



5 Using the dryer

Start

- Sort the laundry according to fabric type.
- Place the laundry in the drum.
- Close the door.
- Switch on by pressing the *On / Off* button.
- Turn the *Programme Selection Knob* to the required setting.
- Press the *Start / Pause / Cancel* button
- The dryer will commence with the selected drying cycle and the relevant indicators will light up.

Cancelling a programme during a drying cycle

- Do not switch the dryer off. Heat soak could damage the electronics.
- Stop the programme by pressing the *Start / Pause / Cancel* button.
- Press the *Start / Pause / Cancel* button once more and hold it in for 3 seconds until the *End Anti crease* indicator lights up.
- Set the time selection knob to *Freshen up*
- Press the *Start / Pause / Cancel* button
- Wait for the programme to end.

Adding more laundry

- This only makes sense if the additional laundry is added near the beginning of a programme. Otherwise the load would comprise semi-dry and damp laundry.
- Press the *Start / Pause / Cancel* button.
- Open the door and place the additional laundry in the drum.
- Press the *Start / Pause / Cancel* button.

Changing a programme during a drying cycle

- Stop the programme by pressing the *Start / Pause / Cancel* button for 3 seconds.
- Select the new programme and press the *Start / Pause / Cancel* button once more.

Programme end

- The drying cycle is completed when the programme progress indicators show *End-Anti creasing* and *Clean filter*.
- Throughout the anti creasing stage the *End-anti creasing* indicator will flash. The programme may then be ended at any time although if left alone it will end automatically.
- Press the *On / Off* button
- Open the door and remove the laundry.

NOTE

Whenever the door is opened during a programme, the programme will be paused automatically and the *Start / Pause / Cancel* indicator will flash. Close the door and press the *Start / Pause / Cancel* button for the programme to continue.

Cleaning

- Clean the lint filter after every drying cycle. (see Lint filter on page 5)
- When required, clean the cabinet and control panel using a damp soapy cloth.
- Rinse and dry.
- Do not use abrasive scouring powders or aggressive cleaning solutions as these may damage the plastic parts of the dryer.

6 Features

Programmes

- There are:
 - Timed programmes of 60, 40, 20 and 10 minutes)
 - Two synthetic programmes (Ready to iron and Ready to wear)
 - Three cotton programmes (Extra dry, Ready to wear and Ready to iron)
 - A Delicates programme
 - A Freshen up programme.
- The programme selector knob may be turned in either direction to select the required programme.
- Always choose a programme which is suitable for the fabric type and observe the symbols on garment care labels.
- With a little practice you will soon determine which programme suits your requirements.

Anti Crease

- The laundry may be removed after a drying cycle has been completed.
- Alternatively, the laundry may be left in the drum, in which case the machine will automatically perform an *Anti Creasing* phase.
- Throughout this phase the laundry is separated, smoothed and cooled. The Anti creasing indicator will flash and the drum will rotate briefly every 60 seconds for about 2 hours.

Buzzer

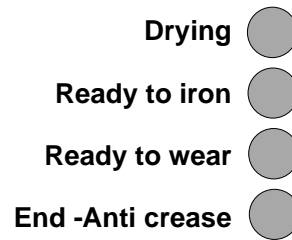
- At the end of a drying programme and throughout the Anti creasing phase, a buzzer (Chime on certain models) will sound.
- If this is annoying, the buzzer may be muted by pressing the *Buzzer Cancel* button.

Control panel lock

- To prevent accidental operation of the dryer, the controls may be locked.
- Press the *Buzzer Cancel* and the *Start/Pause/Cancel* buttons simultaneously and hold down for 3 seconds. (To unlock, repeat the procedure).
- One of the progress indicators will flash.
- When the dryer is in locked mode, only the *ON/OFF* button will function.
- The lock may be activated during operation or in standby mode.

Programme progress indicators

This vertical row of indicators show which phase of the drying cycle is operational.



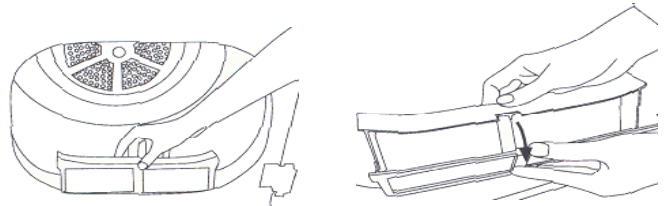
The door

- Open the door by pulling on the handle
- Opening the door will automatically stop the dryer operation.
- To close the door, push until a click is heard.
- If required, the door hinging may be reversed so that the door opens from right to left.
- Note. Activating the control panel lock, does not lock the door.

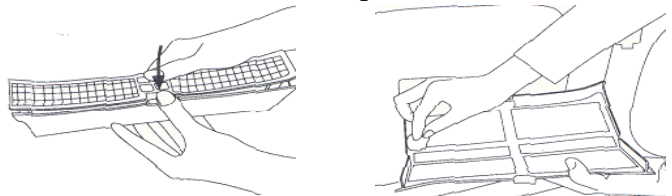
Lint filter

It is essential that the lint filter be cleaned after every drying cycle

At the end of a programme the indicator will glow as a reminder to clean the filter.



Pull the lint filter out and open it



Unfold the filter and carefully remove the accumulated lint using a soft cloth.

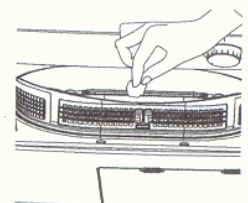
Fold, close and return the filter to its housing.

Drum ribs

Humidity sensors are located on the inside of the drum ribs.

These determine when the laundry is dry. The ribs should be cleaned every three months.

Wait till the dryer has cooled down and wipe the ribs with a soft cloth dipped in vinegar, then wipe dry.



7 Trouble shooting

Since the following are not factory faults, they are the owner's responsibility.

- Damage to exterior finish.
- Breakage of components
- Damage through improper use or installation of the dryer.
- Damage caused by moving the dryer.

Problem –Check

The dryer or a programme will not start.

Has the ON/Off button been pressed?

Has a programme been selected?

Has the Start/Pause /Cancel button been pressed?

Has the power cable been plugged in?

Has a house circuit breaker tripped?

The 'End-Anti crease' indicator flashes for up to two hours.

This is normal. The anti crease stage can last up to two hours. If you wish to reduce the time, switch the dryer off and remove the laundry.

The buttons on the control panel do not respond to pressing.

Check that 'Control panel lock' has not been activated. If the fault persists, unplug the dryer, wait a few minutes and try again.

The 'Drying' indicator flashes.

Press the ON/Off button to switch the dryer off and call service for assistance.

The programme stops for no apparent reason.

Is the door open?

Has the power supply been interrupted?

Press the 'Start/Pause/Cancel' button.

The laundry is too moist or the drying time is too long or the Clean filter indicator flashes.

Has the drum been overloaded?

Check that the ventilation slots are free of obstructions.

Check for blockages in the vent tube.

Clean the 'Fluff filter.'

Confirm that the correct programme was used.

Textiles have shrunk or have been damaged

Only dry textiles labelled safe for tumble drying.

Choose a suitable programme for the fabric type.

If you experience a problem with the machine, please check the following before calling a Service technician.

It may seem obviousbut you may be charged for a service call, even during the warranty period, if no fault is found.

1. Check that the cord is plugged in and that the wall socket switch is on.
2. Check that there is power to the wall socket by testing the socket with a small electric appliance such as a kettle or hair dryer.
3. Check if a house circuit breaker has tripped out.
4. Check that the laundry is evenly distributed inside the drum.
5. Check that the machine is not over loaded.
6. Check that the dryer door is firmly closed.
7. Check that the ON / OFF button is pushed in.
8. Check that the fluff filter has been cleaned.

8 Technical specifications

Drying method	Vented, electronic sensor controlled
Height	850mm
Width	595mm
Depth	540mm
Height adjustment of feet	5mm
Weight, unpacked	29kg approx.

9 Service Centres

If you have followed the instructions and still have a problem, contact the nearest Defy Service Centre. They will be able to advise you on any

BLOEMFONTEIN

160 Long Street, Hilton,
Bloemfontein 9301.
Tel. 051 400 3900
Bloemfontein.Service@defy.co.za

CAPE TOWN

5A Marconi Rd.
Montague Gardens, 7441.
Tel. 021 551 8314
CapeTown.Service@defy.co.za

DURBAN

35 Intersite Avenue,
Umgeni Business Park, Durban 4051.
Tel. 031 268 3300
Durban.Service@defy.co.za

EAST LONDON

16 Bowls Rd. Arcadia, East London 5201.
Tel. 043 743 7100
EastLondon.Service@defy.co.za

JOHANNESBURG

Cnr. Mimetes & Kruger Sts. Denver ext.12
Johannesburg. 2094.
Tel. 011 621 0200 or 011 621 0300
Gauteng.Service@defy.co.za

POLOKWANE

87 Nelson Mandela Drive. Superbia 0699.
Tel. 0152 92 1166 / 7 / 8 / 9.
Polokwane.Service@defy.co.za

PORT ELIZABETH

112 Patterson Road,
North End, Port Elizabeth 6001.
Tel. 041 401 6400
PortElizabeth.Service@defy.co.za

PRETORIA.

Block A1 Old Mutual Industrial Park.
Cnr. D.F.Malan Drive & Moot Str.
Hermanstad. 0082.
Tel. 012 377 8300
Pretoria.Service@defy.co.za

**OTHER AREAS ARE SERVICED BY OVER 200 AUTHORISED SERVICE AGENTS.
PLEASE CONSULT THE NEAREST REGIONAL DEFY SERVICE CENTRE FOR DETAILS**

10 Warranty

This certificate is issued by DEFY APPLIANCES LIMITED manufacturers of Defy and Ocean products, hereinafter the Company, to the original purchaser only, of the appliance described on the certificate and shall constitute the only warranty given in respect of this appliance.

The Company warrants to the original purchaser that for a period of TWO YEARS from date of purchase the appliance is free from defect under normal domestic use, both in workmanship and material, subject to the following conditions.

1. Repair or replacement of any part of this appliance, found by the Company to be defective, shall be at the election of the Company. The Company reserves the right to effect such service through any of its Service Divisions or Authorised Service Dealers. The cost of such service shall be borne by the Company in full, provided that the appliance is located no further than 50km from a Company Service Centre or an Authorised Service Dealer. Where the appliance is located beyond the 50km radius, the purchaser shall be liable for the standard travelling charges, as determined by the Company.

CARRY IN SERVICE Microwave ovens, Compact cookers and small appliances are repaired in our service centres and are not collected from the customers home. Faulty units should be delivered to the purchasing dealer or to the nearest Company Service Centre for warranty repairs.

2. Vitreous enamelware, fuses and lamps are specifically excluded from these warranties. It is an express condition of these warranties that the purchaser takes due care and attention in the use and maintenance of the appliance. Abuse, misuse in conflict with operating instructions, connection to incorrect voltages and subjection to commercial use shall release the Company from its obligations.

3. This warranty shall become void and cease to operate if the appliance is dismantled by, or any repairs to the appliance are effected by any persons not duly authorised by the Company, or if substitute parts not approved by the Company are used in the appliance, or if the serial number of the appliance is removed.

4. The Company shall not be responsible for damages resulting from fire, flood, civil disturbances or any Act of God. The Company shall not, in terms of these warranties be responsible nor held liable for any consequential loss or damage of any kind caused by or due to the failure or malfunction of the appliance.

5. The Company shall not be responsible for transportation or other costs other than those incurred within the provisions of Point 1 of this Certificate.

6. These warranties shall not apply to the appliance if it is purchased or used beyond the borders of the Republic of South Africa, Namibia, Botswana, Swaziland and Lesotho.

7. Where service is requested under warranty and no fault or defect can be found by the Company, all costs incurred will be for the purchaser's account.

8. This Certificate as well as your invoice will serve as proof of purchase. For the purpose of warranty, it will be essential to produce this Certificate and invoice. Failure to do so, will render the purchaser liable for service costs.



KEEP THIS CERTIFICATE AND SALES INVOICE AS PROOF OF PURCHASE FOR WARRANTY PURPOSES.