

# Combi

DK-5 4050 Series

## Select

## Instruction Manual

Be sure to carefully read this instruction manual **before** using the product to ensure proper use of the stroller and keep it for future reference. Record the following information for quick reference.

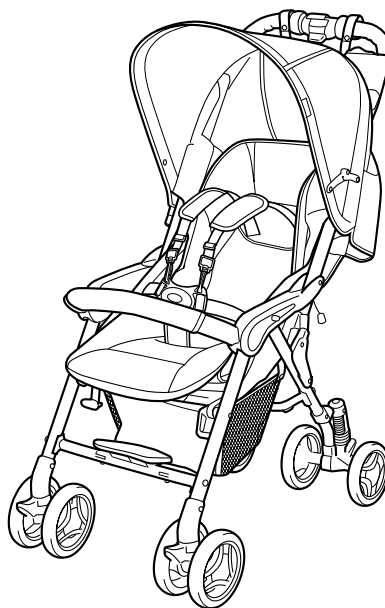
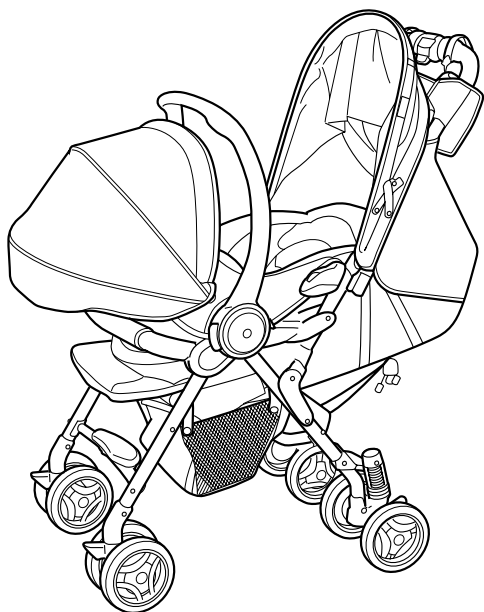
Date Purchased: \_\_\_\_\_

Model Number: 4050-\_\_\_\_\_ Located on the rear right leg.

Color: \_\_\_\_\_

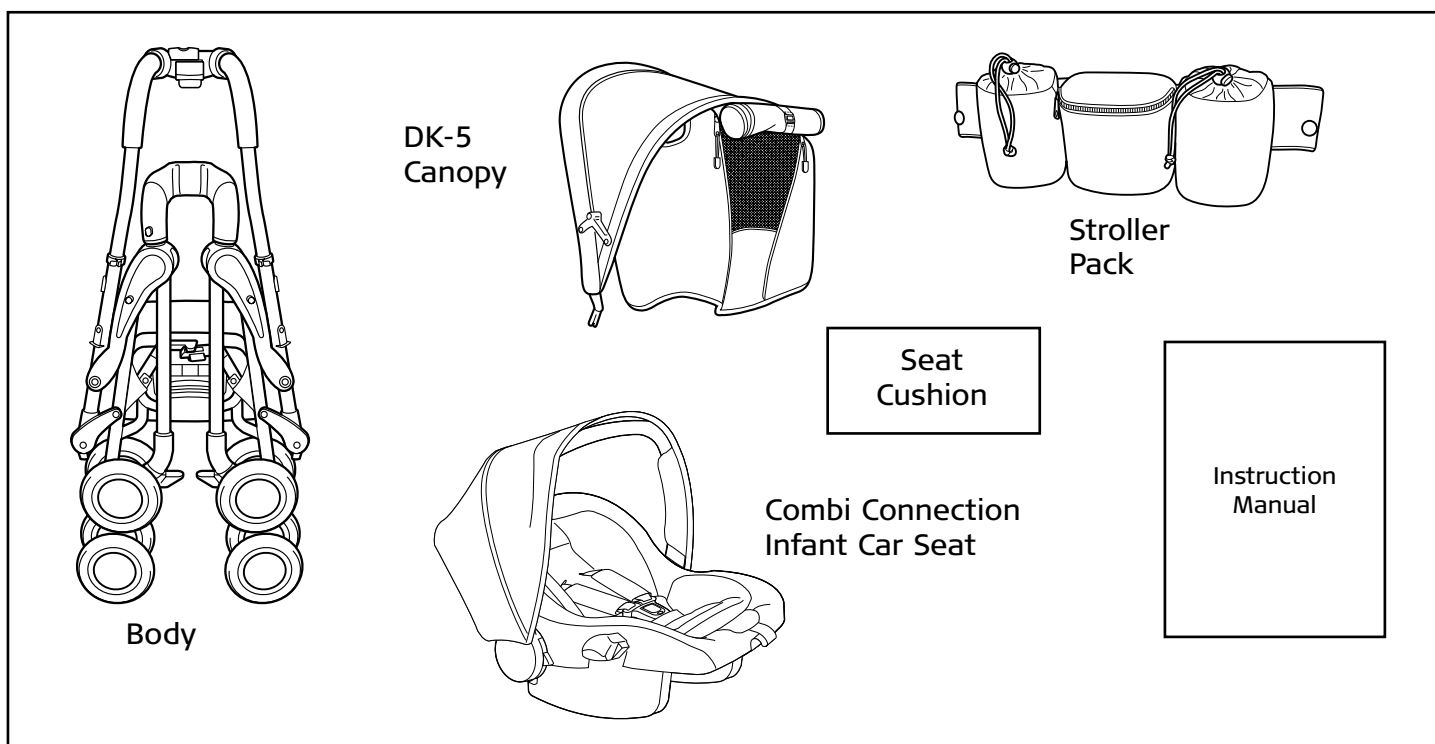
Fabric Pattern: \_\_\_\_\_

Note: Illustrations are only representative and not actual.  
Attach copy of sales receipt.

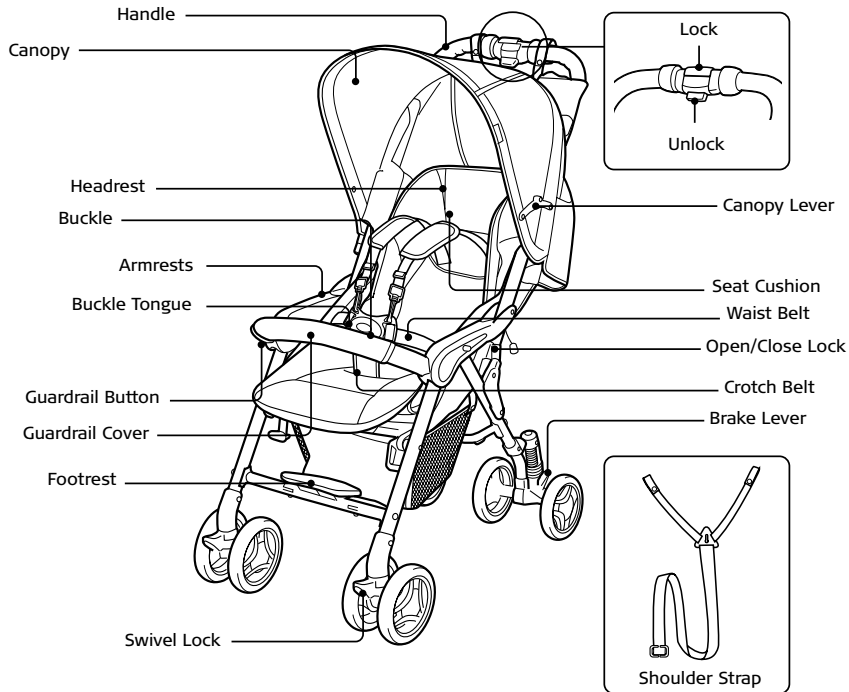


### Parts List

Make sure you have all the parts listed below before using your stroller. If any parts are missing, call Consumer Affairs at 1-800-99-COMBI.



## Name of Parts - Stroller with Seat Cushion

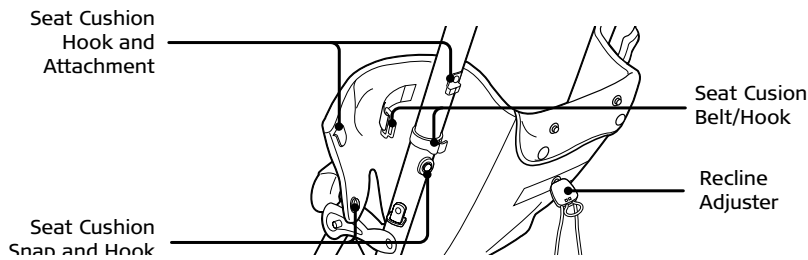


Questions, concerns  
check our website  
[www.combi-intl.com](http://www.combi-intl.com)

1-800-992-6624

Front

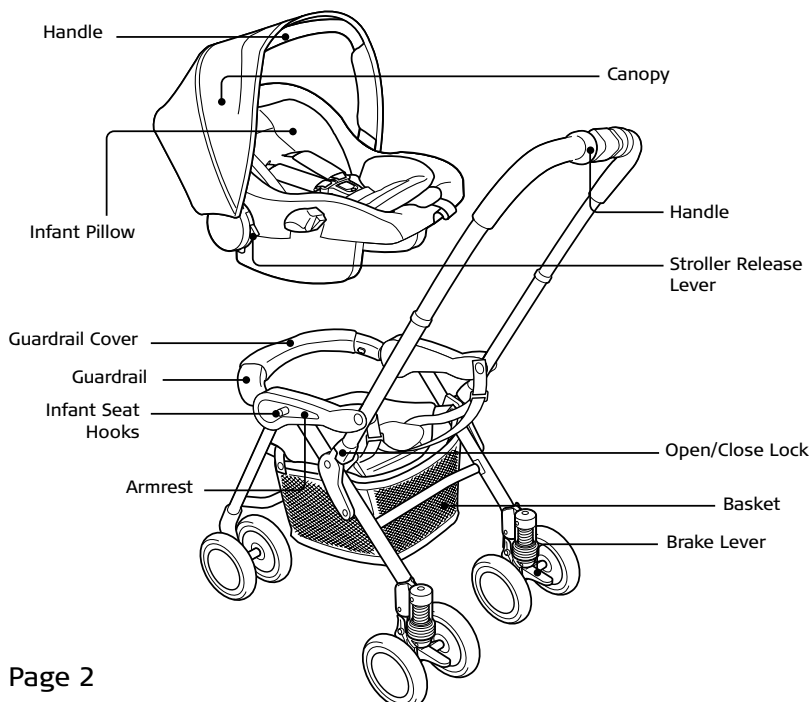
---



Back

---

## Name of Parts - Stroller with Infant Restraint



Combi Connection  
Infant Restraint

---

DK-5 Stroller

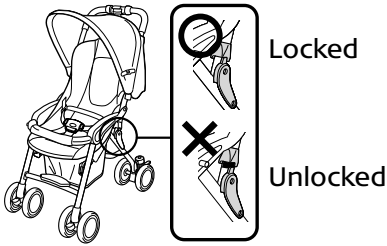
---

# ⚠️ WARNINGS For your child's safety:

If your stroller is not used in compliance with these instructions, serious injury may result.

## ⚠️ WARNING

Before use, make sure stroller locking mechanism is in the locked position.



## ⚠️ WARNING

Avoid serious injury from falling or sliding out. Always use attachment strap when attaching infant restraint and waist belt when using stroller alone.



## ⚠️ WARNING

Do not use the stroller on steep slopes, stairs, escalators, beaches, rough roads, mud, etc.



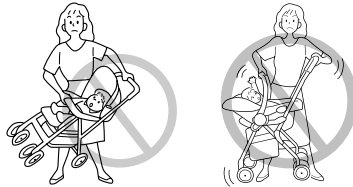
## ⚠️ WARNING

Do not allow your child to stand in or on the stroller.



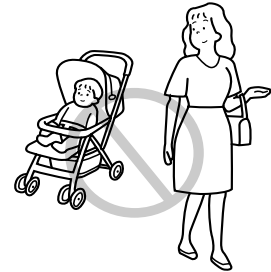
## ⚠️ WARNING

Do not lift or carry the stroller while occupied. The stroller may fold.



## ⚠️ WARNING

Never leave child unattended.



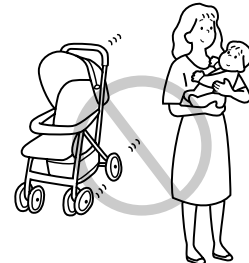
## ⚠️ WARNING

Do not hang items on the handle or place items on canopy. This could cause the stroller to become unbalanced or tip over.



## ⚠️ WARNING

Always engage both brakes when parking the stroller.



## ⚠️ WARNING

Never carry more than one child in the stroller. Do not allow a child to ride or sit on areas of stroller other than the seat.



## ⚠️ WARNING

CHILD MAY SLIP INTO LEG OPENINGS AND STRANGLE. NEVER USE IN RECLINED CARRIAGE POSITION UNLESS THE PERMANENTLY ATTACHED SAFETY COVER IS USED.

## ⚠️ WARNING

Do not allow weight to be applied to the back of infant restraint. Restraint could become detached from stroller



**MAXIMUM WEIGHT = 35 LBS.**

### CAUTIONS:

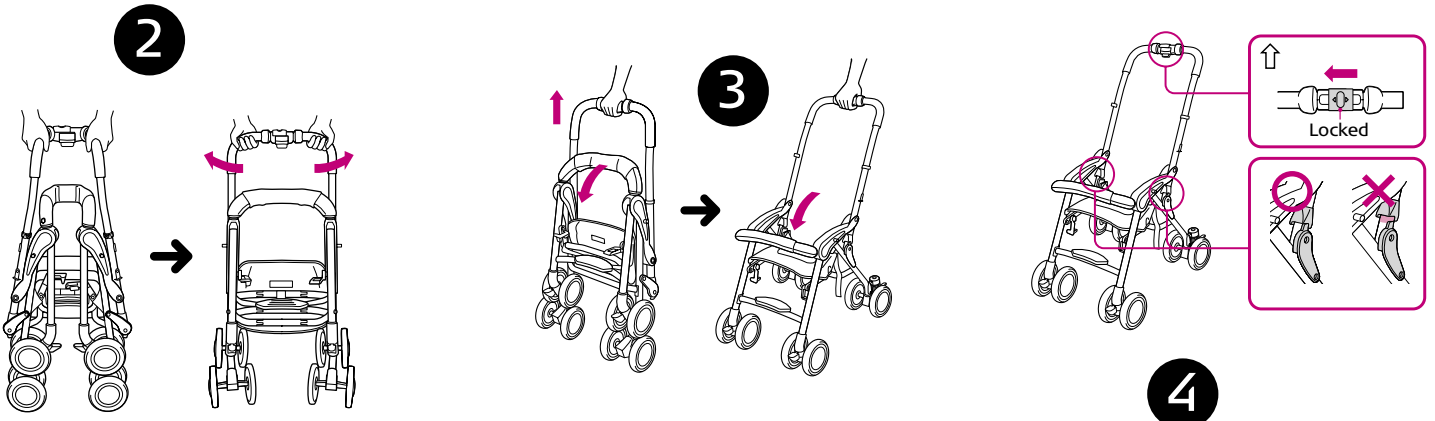
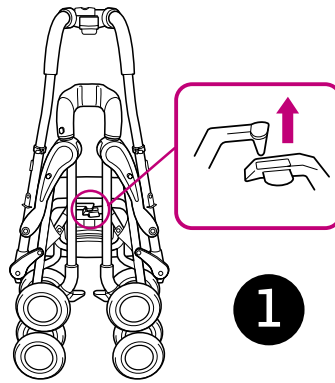
1. Completely remove all plastic bags and packing materials before using this product to prevent a possible choking hazard.
2. Push the stroller at a normal walking speed only.

**In the event of damage or problems, discontinue use and contact Combi Consumer Affairs for instructions: 1-800-992-6624.**

**Note: Illustrations are for reference only and may not represent the actual product.**

## Opening the Stroller

1. Lift up on stroller lock lever to unlock.
2. Grasp handle on left and right sides. Pull handle outward.
3. While holding release lever, pull handle up to open stroller.
4. Before use, ensure both stroller locking mechanisms are in the locked position.

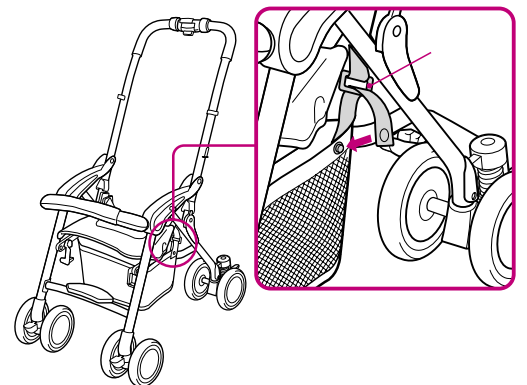


## Using the Basket

**⚠ Do not place more than 11 lbs. in the basket.  
Remove all items from basket before folding stroller.**

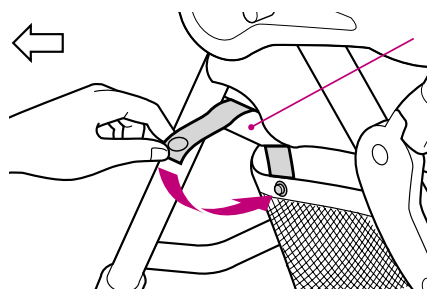
### Attaching

1. Route belts from left and right sides of basket, through belt hooks.
2. Snap belt to basket to secure.

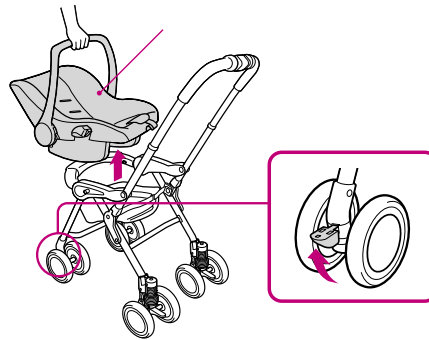


### Removing

Reverse the procedure for attaching.



## Folding the Stroller

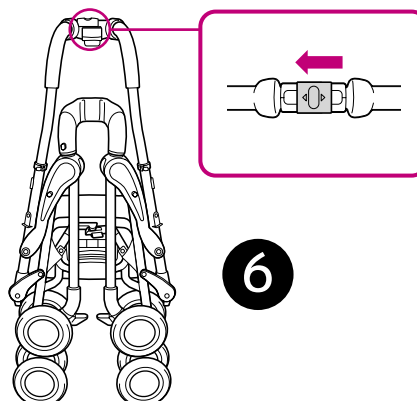
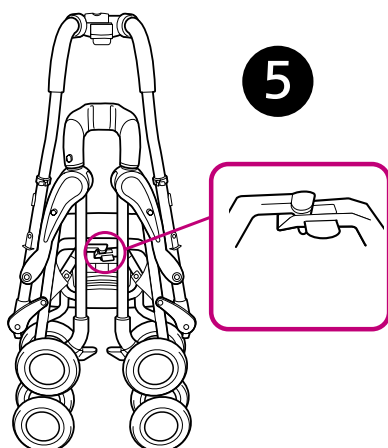
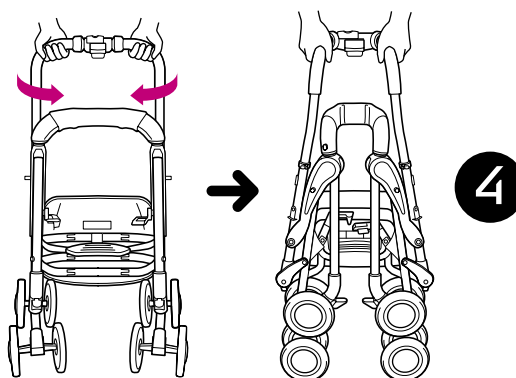
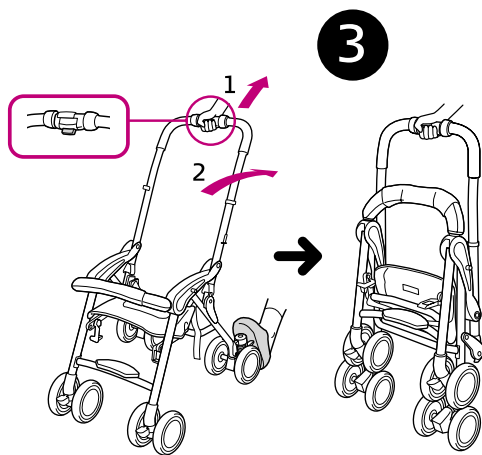
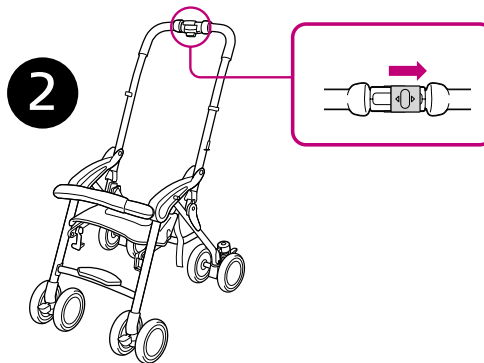
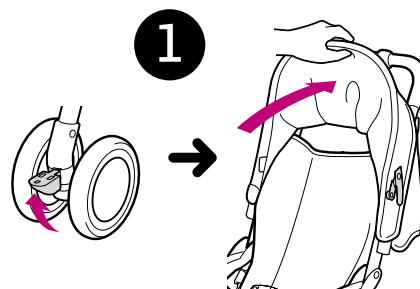


### When Using With Infant Seat

- 1 Remove infant seat and lock both swivel wheels.

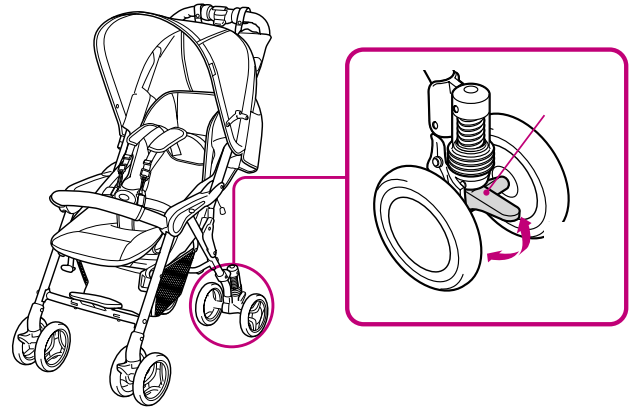
### When Using Without Infant Seat or After Infant Seat is Removed

1. Lock both swivel wheels and fold the canopy towards the handle.
2. Slide indicator to right to unlock the stroller.
3. Press and hold release button while lifting handle up and pushing rear stroller wheel forward.
4. Grasp left and right side of stroller and fold handle inward.
5. Ensure auto lock is locked.
6. Slide indicator left to lock.



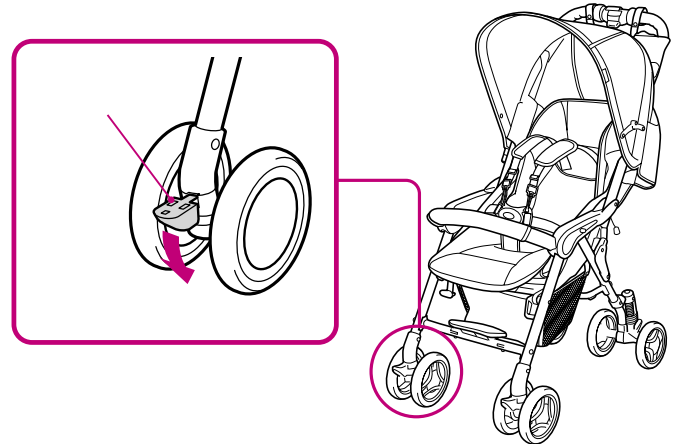
## Using the Brakes

- To lock brakes, push both brake levers down.
- To unlock brakes, lift both brake levers up.



## Using the Swivel Wheels

- To lock swivels, lift both swivel lock levers up.
- To unlock swivels, push both swivel levers down.



## Using the Stroller with Infant Seat

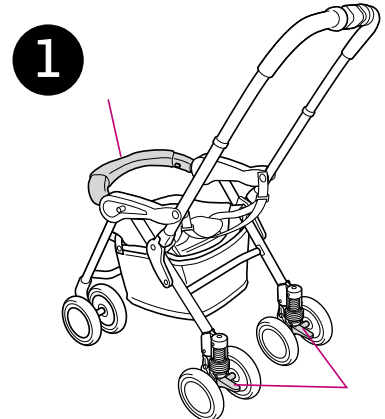
### Attaching Infant Seat

#### CAUTION

Infant seat must be attached to stroller in rear facing position only.

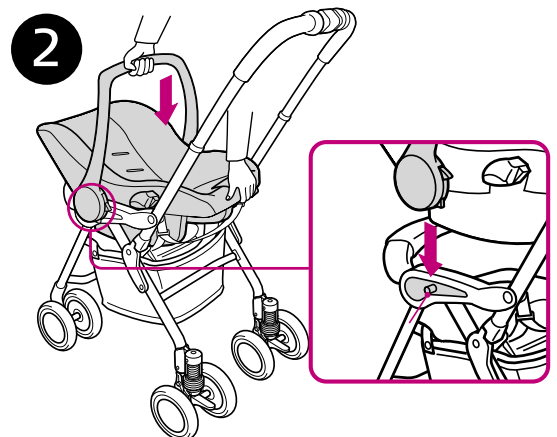
ALWAYS check stroller lock lever on the child seat to ensure it is in the locked position before use.

Never force the infant seats stroller release lever from unlock to locked position. This may damage the infant seat.



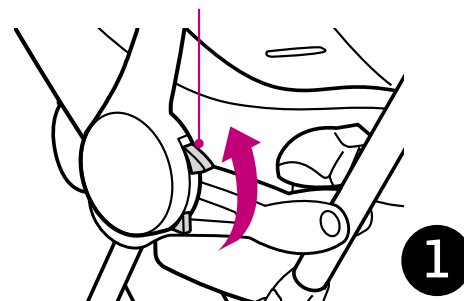
**NOTE:** The infant seat can be attached to DK-5 with or without the stroller's seat cushion. When attaching infant seat to the stroller with stroller seat cushion, the stroller seat will need to be in the reclined position.

1. Ensure guardrail is secure and brake levers are locked.
2. With infant seat in rear facing position, press seat into stroller until seat locks onto both sides of stroller. Lift infant seat to ensure seat is secure.



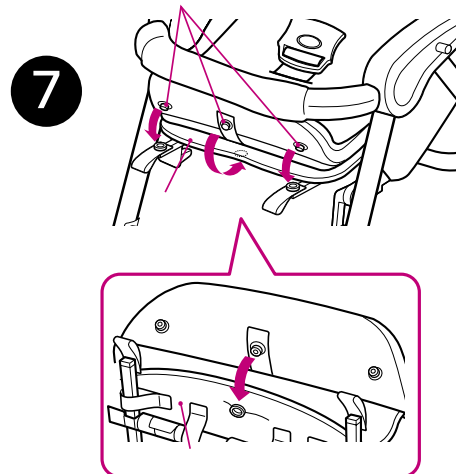
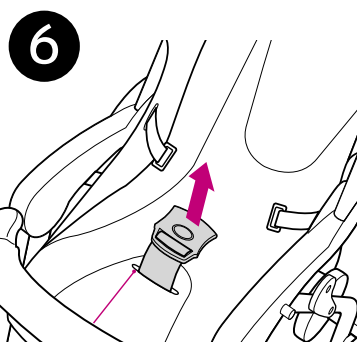
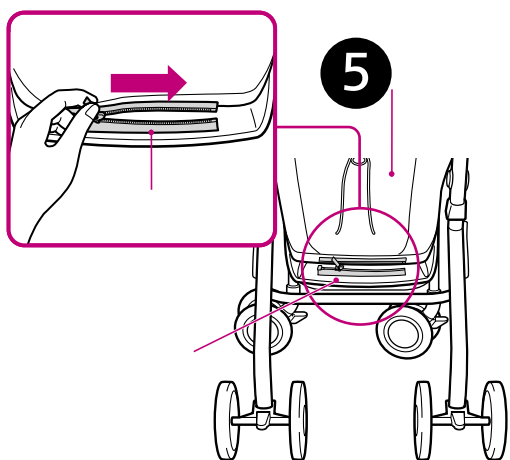
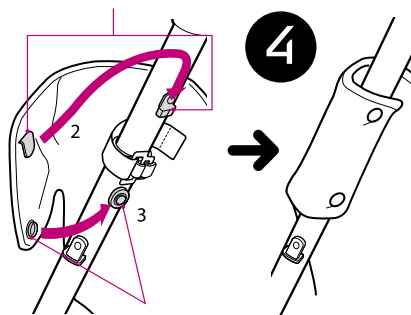
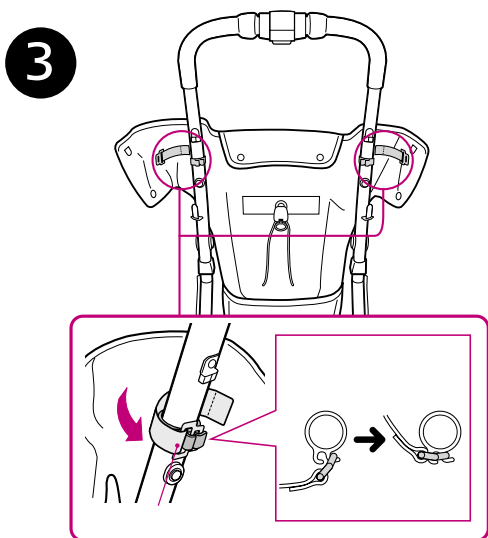
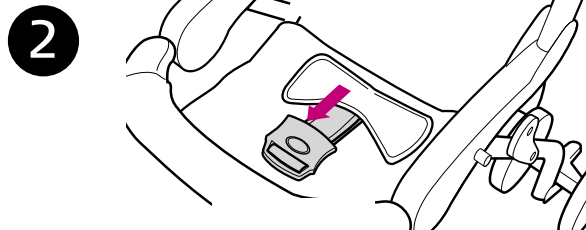
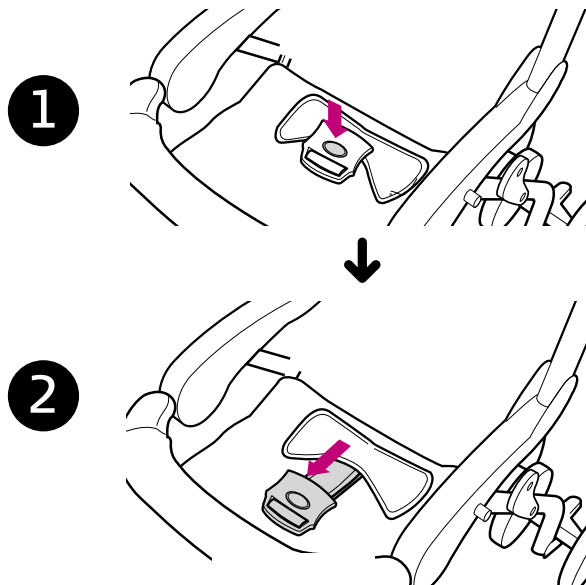
### Removing Infant Seat

1. Lift stroller release lever up to release infant seat from stroller.
2. Lift infant seat up using handle to remove from stroller.



## Stroller with Seat Cushion

1. Locate the stroller buckle.
2. Pull the stroller buckle from the storage position.
3. Attach belt from seat cushion to hook on stroller frame. Attachment will be confirmed with an audible "click".
4. Attach hook and snap from seat cushion to attachments on stroller frame.
5. Route the buckle through lower center slot in the seat cushion.
6. Route waist belt from #3, through the twin waist belt loops. Reattach buckle tongues to both sides of waist belt and insert into buckle.
7. Attach snaps from seat cushion to snaps on edge of seat base.



## Adjusting Seat Positions

### CAUTION

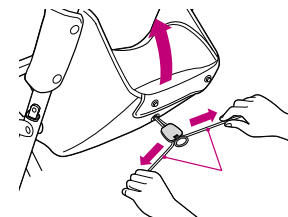
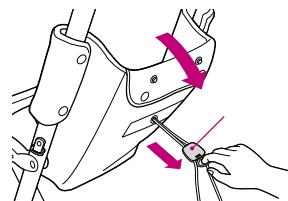
Be careful when reclining the backrest while your baby is in the stroller to prevent abrupt changes in seating position.



Child may slip into leg openings and strangle. Never use seat in reclined position unless the permanently attached safety cover is used.

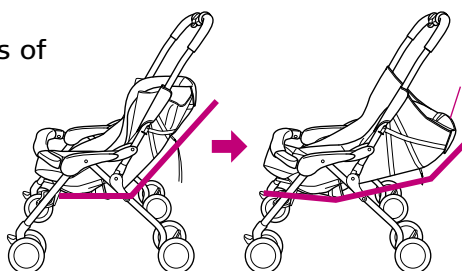
### To Recline

Pull center ring of recline adjuster.  
Head rest will automatically raise when seat is reclined.



### To Move Upright

Pull left and right sides of recline adjuster.



## Using the Safety Cover

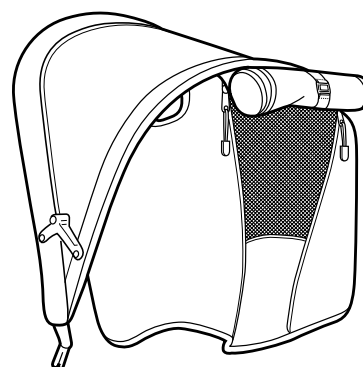
### CAUTION

Before folding the stroller, unfasten and store the safety cover under the seat. The stroller will not fold with it attached.



Child may slip into leg openings and strangle. Never use seat in reclined position unless the permanently attached safety cover is used.

1. Lift the bottom of the seat cushion and pull the safety cover out.
2. Wrap the Velcro straps around the guardrail.
3. Fasten the Velcro straps to secure.



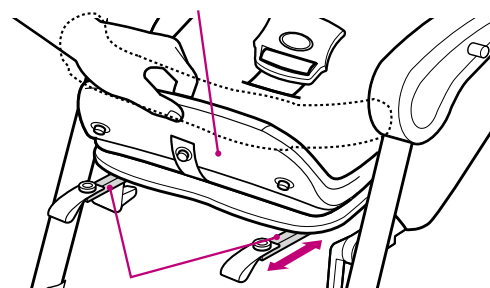
## Using the Air-Through System

Open and close the air-through window by using both left and right side zippers. Roll window up and secure with canopy buckle.

## Using the Seat Extension

1. Lift the seat cushion and locate the seat extension.
2. Pull out the seat extension on both sides.

When not in use, push the seat extension back the original position.

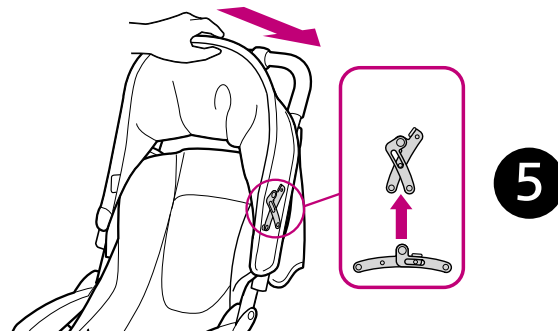
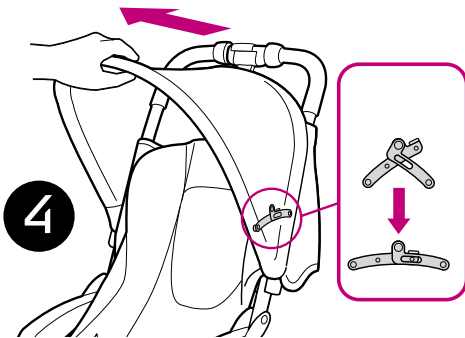
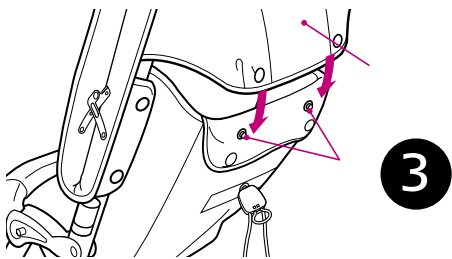
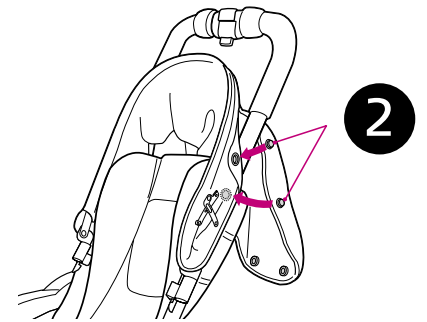
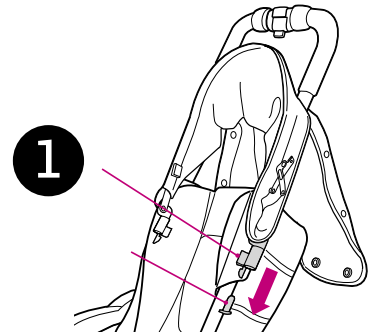




## Using the Canopy

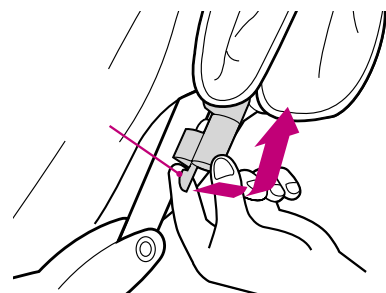
### Attaching Canopy

1. Fully insert the canopy attachment (male) to the canopy holder (female). Connection will be confirmed with an audible "click".
2. Attach snaps on backside of canopy to snaps on front side of canopy.
3. Attach snaps on lower portion of canopy to snap on the back of the seat cushion.
4. Press down canopy lock to fully extend canopy.
5. Push lock up to fold canopy.



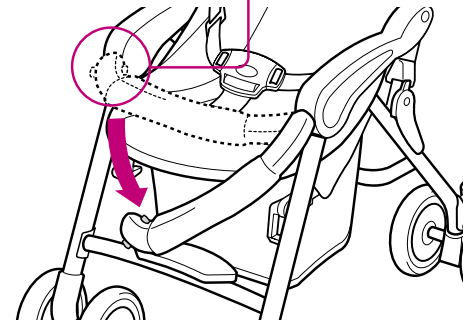
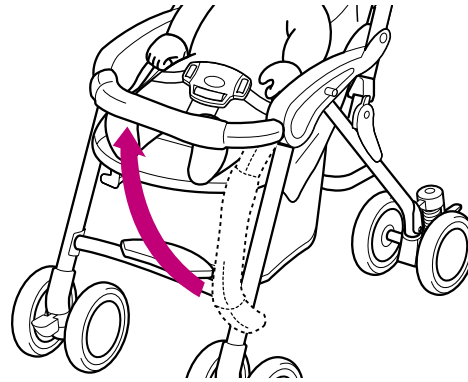
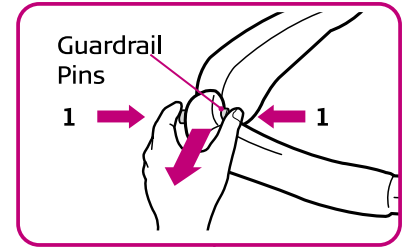
### Removing Canopy

Pull the (male) canopy attachment and press upward to remove canopy.



## Using the Guardrail

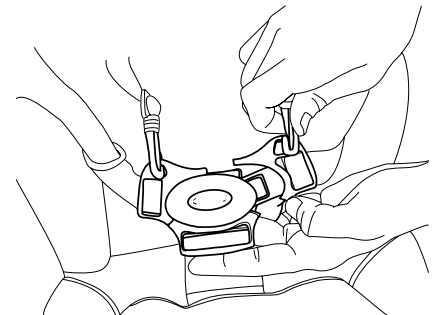
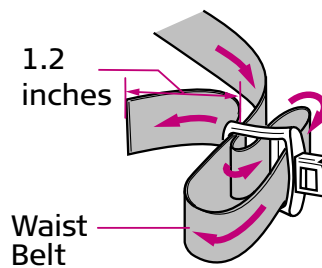
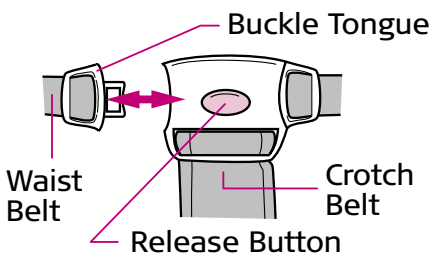
1. Press guardrail pins and pull guardrail away from stroller to open.
- \* Guardrail opens and closes only on the left side (while facing the stroller).
2. Place child in seat and reattach guardrail. Gently pull guardrail to ensure it is secure.



## Using the Harness



**Avoid serious injury from falling or sliding out. Always use the 5-point harness.**



## Unbuckling the Harness

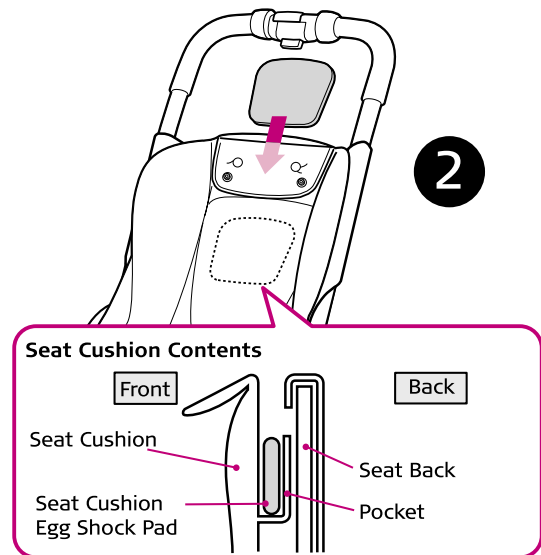
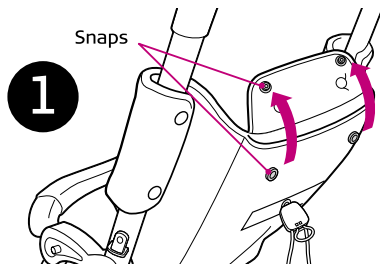
1. Press levers down on right and left harness hooks to detach from buckle tongues.
2. Press buckle button down (with Combi logo) and detach buckle tongues from buckle.

## Buckling the Harness

1. Place the crotch belt between the baby's legs.
2. Insert buckle tongues into buckle.
3. Lift buckle with tongues inserted and attach right and left hook to holes in buckle tongue.
4. To adjust the harness or waist belt, loosen the slack on both sides of each buckle tongue.

## Using the Egg Shock Pad

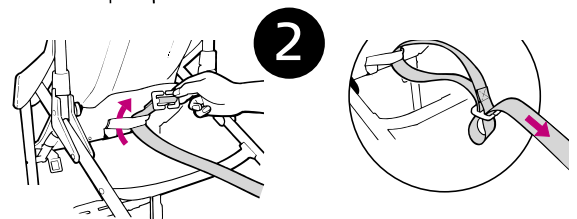
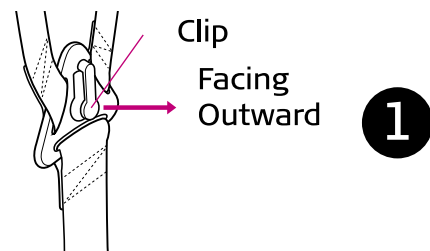
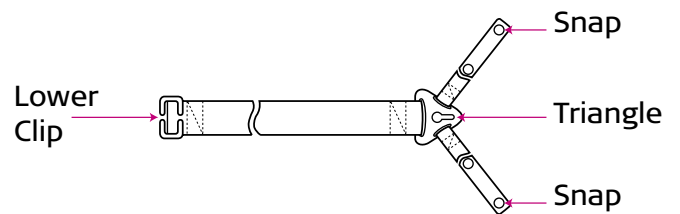
1. Release snaps from the top of seat cushion.
2. Insert the Egg Shock pad inside the seat cushion.



## Using the Shoulder Strap

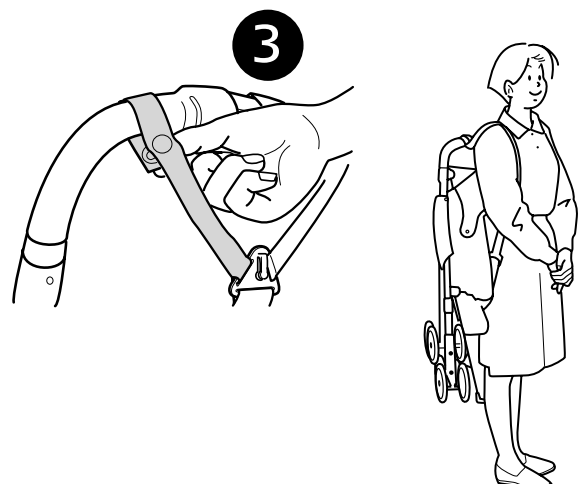
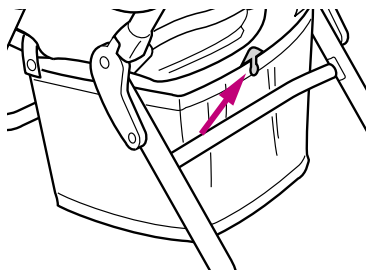
### Attaching Shoulder Strap

1. Ensure clip on triangle is facing outward.
2. Route the lower clip through the belt hook at the rear of the seat base.
3. To prevent the shoulder strap from twisting, route the two upper belts around the stroller handle grips and snap to secure.
4. Fold the Stroller and adjust the shoulder strap to a length suitable for you.



### Removing Shoulder Strap

When the strap is not in use, remove it from the handle and store in the basket. Attach the triangle clip to the upper edge of the basket to secure.



## Routine Maintenance

**STORE IN A COOL AND DRY AREA**, especially in the summer. Do not store the stroller in the trunk of a vehicle.

### SEAT CUSHION

The seat cushion is machine washable. Set to gentle cycle using cold water and a mild detergent. Do not use bleach. Lay seat cushion flat to dry in shaded area. Do not machine dry. To prevent color fading, do not leave soaking for a long period. Do not dry in the sun. If the seat cushion is frayed or unraveling, discontinue use and call Consumer Affairs for further instruction.

### EGG SHOCK PAD

The Egg Shock pad is not washable. Should pad become damp, lay flat in a shaded area to dry.

### CANOPY, WAIST BELT, FIXED SEAT BASE AND BASKET

Hand wash with brush. Wipe out excess water with a dry cloth and dry in a shaded area. For stubborn dirt, dilute a mild detergent and apply directly to the dirty area. Wipe out the detergent.

### MAIN BODY

Briskly wipe off any mud and dirt. To clean the body, wipe with a damp cloth then wipe out any traces of moisture on the body with a dry cloth. The main body might become moldy and musty if not wiped dry.

**Excessive exposure to the sun could cause premature color fading of stroller plastic and fabric.**

### WHEEL ASSEMBLIES

After prolonged normal use, the wheels of your stroller may not swivel or turn as easily as when the stroller was new. This is usually due to a buildup of dirt in the swivel mechanism. Before adding lubrication, wipe off mud and dirt. **Do not use soap and water to wash wheels.** Periodically check that all screws, bolts and nuts are tight.

Avoid lubricating the swivel wheels whenever possible. Excessive lubrication or adding lubricant to swivel wheels when new may cause them to develop a shimmy or wobble that may quicken their deterioration. Add silicone\* to **the wheel assemblies** in small amounts.

**Do not use lubricants because oil attracts dust and would hinder the movement rather than improve it.**

\*Silicone spray is available in varying size cans at most hardware stores.

## Trouble Shooting

### STROLLER WILL NOT FOLD

- Check to see that the waist belt is not caught in the side.
- Make sure front swivels are locked.
- Make sure the backrest is in the folded position.
- Remove all items from the basket.

### DIFFICULT TO STEER/STROLLER PULLS TO ONE SIDE

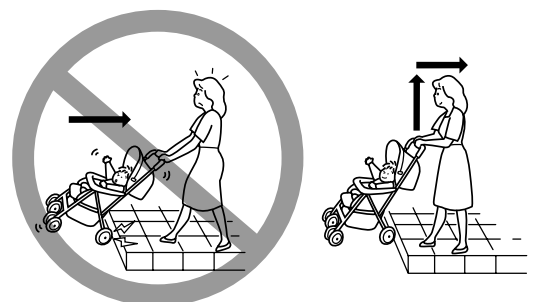
- Remove any items hanging from the handle.
- Make sure weight in basket is distributed evenly.
- Check that the brakes are not in the locked position.
- Clean and add silicone to wheels, if necessary.

### DIFFICULT TO GET UP CURBS

- Pulling stroller backward makes going up a curb difficult, and could pose a safety hazard. Pull the handle up to lift the rear wheels onto the curb, then pull the stroller backward until the front wheels clear.

### DIFFICULT GOING DOWN CURBS

- Turn stroller around, bringing rear wheels toward the edge of the curb. Gently lower rear wheels onto the surface below. Once the rear wheels have landed, guide the front portion of the stroller, using the armrest as support.



## LIMITED WARRANTY

1. Combi Juvenile Products, when purchased from an authorized retailer; are warranted to the original purchaser to be free of defect in materials and workmanship for a period of one (1) year from date of purchase. Warranty is valid for products purchased and used in the U.S. only, and used in compliance with the warrantor's use and maintenance instructions. Save your carton and receipt in case of return for warranty service is necessary.
2. During the warranty period your Combi product will either be repaired or replaced, at the warrantor's discretion, without charge if it is purchased from an authorized Combi dealer and is found to be defective in workmanship or materials. For service call 1-803-548-6633. The warrantor shall not be responsible for any costs incurred by the consumer in returning a defective product for repair.

This limited warranty shall not apply to normal wear to the product, or if the product has been:

- a. Damaged due to accidents, misuse, abuse or neglect as determined by Combi.
- b. Tampered with or repaired by other than an authorized Combi repair center or with parts other than Combi approved parts.
- c. Leased or rented for commercial use.

THE WARRANTY PROVIDED HEREIN IS EXCLUSIVE AND IS IN LIEU OF ALL OTHER EXPRESS WARRANTIES. ANY IMPLIED WARRANTIES, INCLUDING ANY IMPLIED WARRANTY OF MERCHANTABILITY OR FITNESS FOR A PARTICULAR PURPOSE ARE EXPRESSLY EXCLUDED. WARRANTOR'S OBLIGATIONS AND THE CONSUMER'S OR OTHER BUYER'S REMEDIES UNDER THE LIMITED WARRANTY ABOVE ARE EXCLUSIVE AND ARE STRICTLY LIMITED TO REPAIR OR REPLACEMENT AS STATED. ANY INCIDENTAL OR CONSEQUENTIAL DAMAGES ON THE PART OF THE WARRANTOR AND ANY SUPPLIER OR DEALER ARE HEREBY ALSO EXPRESSLY EXCLUDED.

Some states limit or do not allow exclusions or limitations on how long an implied warranty lasts so the above limitation may not apply to you. Some states do not allow the exclusion or limitation of incidental or consequential damages, so the above limitation or exclusion may not apply to you. This warranty gives you specific legal rights, and you may also have other rights which vary from state to state.



DK-5 4050 Series

# Select

## Instruction Manual

If you would like to place an order for the following parts, please fill out the form below and return to the following address:

**Combi USA, Inc.**  
Attn: Consumer Affairs Department  
1962 Highway 160 W, Suite 100  
Fort Mill, SC 29708-8027

or Fax this completed form to  
**803-548-3663**

**IMPORTANT: We must have this information to process your order:**

Model Number: 4050 - _____ Color & Pattern of Fabric: _____ <small>Located on the rear right leg.</small>
--

### Parts List for the DK-5 (4050 Series) only.

	Price	Quantity	Total
1. Seat Cushion	40.00		
2. Basket	25.00		
3. Canopy	45.00		
4. Stroller Pack	25.00		
5. Egg Shock Pad	40.00		
6. Shoulder Pad/Set	15.00		
7. Shoulder Strap	20.00		
8.			
9.			
10.			
11.			

If you need to order other parts for your stroller, please call us toll-free at 1-800-992-6624.

**Shipping and Handling Fees:** Add \$8.00 for orders \$34.99 and under. Add \$13.00 for orders \$35.00 and over. Note: Additional shipping charges will apply outside of the Continental U.S. Combi USA reserves the right to change pricing at any time.

Amount of Order		
ADD Shipping & Handling		
Sales Tax (6%) (SC residents only)		
Total		

### Ship To:

Customer Name \_\_\_\_\_

Street Address \_\_\_\_\_

Street Address \_\_\_\_\_

City, State, Zip \_\_\_\_\_

Telephone Number \_\_\_\_\_

### Charge to my credit card:

VISA                                       MASTERCARD

AMERICAN EXPRESS                       DISCOVER

Card Number \_\_\_\_\_

Expiration Date \_\_\_\_\_ - \_\_\_\_\_ - \_\_\_\_\_

Cardholder's Signature \_\_\_\_\_

Check enclosed

120304