



Avocent®

DSR® Switch

Installer/User Guide

For models: DSR1021 DSR1022





INSTRUCTIONS

This symbol is intended to alert the user to the presence of important operating and maintenance (servicing) instructions in the literature accompanying the appliance.



DANGEROUS VOLTAGE

This symbol is intended to alert the user to the presence of uninsulated dangerous voltage within the product's enclosure that may be of sufficient magnitude to constitute a risk of electric shock to persons.



POWER ON

This symbol indicates the principle on/off switch is in the on position.



POWER OFF

This symbol indicates the principle on/off switch is in the off position.



PROTECTIVE GROUNDING TERMINAL

This symbol indicates a terminal which must be connected to earth ground prior to making any other connections to the equipment.



DSR[®] 1021/1022 Switch

Installer/User Guide

Avocent, the Avocent logo, The Power of Being There, DSR, DSView and OSCAR are registered trademarks of Avocent Corporation or its affiliates. All other marks are the property of their respective owners.

© 2005 Avocent Corporation. All rights reserved.

USA Notification

Warning: Changes or modifications to this unit not expressly approved by the party responsible for compliance could void the user's authority to operate the equipment.

Note: This equipment has been tested and found to comply with the limits for a Class A digital device, pursuant to Part 15 of the FCC Rules. These limits are designed to provide reasonable protection against harmful interference when the equipment is operated in a commercial environment. This equipment generates, uses and can radiate radio frequency energy and, if not installed and used in accordance with the instruction manual, may cause harmful interference to radio communications. Operation of this equipment in a residential area is likely to cause harmful interference, in which case the user will be required to correct the interference at his/her own expense.

Japanese Approvals

この装置は、情報処理装置等電波障害自主規制協議会（VCCI）の基準に基づくクラスA情報技術装置です。この装置を家庭環境で使用すると電波妨害を引き起こすことがあります。この場合には使用者が適切な対策を講ずるよう要求されることがあります。

Safety and EMC Standards

UL, FCC, cUL, ICES-003, CE, GS, VCCI, MIC, C-Tick, GOST

TABLE OF CONTENTS

List of Figures	vii
List of Tables	ix
Chapter 1: Product Overview	1
<i>Features and Benefits</i>	<i>1</i>
<i>Reduce cable bulk</i>	<i>1</i>
<i>Access the DSR1021/1022 switch via network connection</i>	<i>2</i>
<i>Two modes of access to the DSR1021/1022 switch</i>	<i>2</i>
<i>Simple access to any target device</i>	<i>2</i>
<i>Safety Precautions</i>	<i>4</i>
<i>Rack Mount Safety Considerations</i>	<i>4</i>
Chapter 2: Installation	5
<i>DSR 1021/1022 Switch Connectivity</i>	<i>5</i>
<i>Installation Overview</i>	<i>6</i>
<i>Setting up your network</i>	<i>6</i>
<i>Installing the DSR1021/1022 switch</i>	<i>6</i>
<i>Getting Started</i>	<i>8</i>
<i>Items supplied with the DSR1021/1022 switch</i>	<i>8</i>
<i>Additional items needed</i>	<i>8</i>
<i>Connecting the DSR1021/1022 Switch Hardware</i>	<i>8</i>
<i>Verifying the Connections</i>	<i>10</i>
<i>DSR1021/1022 switch</i>	<i>10</i>
<i>DSRIQ modules</i>	<i>11</i>
<i>Configuring the Web Server and DSView 3 Software</i>	<i>11</i>
<i>Setting up the built-in web server</i>	<i>11</i>
<i>Setting Up the DSView Software</i>	<i>11</i>
<i>Adjusting Mouse Settings on Target Devices</i>	<i>11</i>
<i>Microsoft Windows</i>	<i>12</i>
<i>LINUX</i>	<i>14</i>
<i>UNIX</i>	<i>17</i>
<i>Novell NetWare</i>	<i>19</i>
<i>Apple Mac OS</i>	<i>20</i>

Chapter 3: Local Port Operation	21
<i>Controlling Your System at the Local Port</i>	21
<i>Viewing and Selecting Ports and Servers</i>	21
<i>Viewing the status of your DSR1021/1022 switching system</i>	22
<i>Selecting target devices</i>	22
<i>Soft switching</i>	23
<i>Navigating the OSCAR Interface</i>	24
<i>Configuring OSCAR Interface Menus</i>	25
<i>Assigning target device names</i>	26
<i>Assigning device types</i>	28
<i>Changing the display behavior</i>	29
<i>Controlling the status flag</i>	31
<i>Broadcasting to target devices</i>	33
<i>Using Scan mode</i>	34
<i>Setting local port Screen Saver options</i>	37
<i>Setting the keyboard country code</i>	39
<i>Managing Server Tasks Using the OSCAR Interface</i>	41
<i>Viewing and disconnecting user connections</i>	42
<i>Resetting your PS/2 keyboard and mouse</i>	43
<i>Displaying version information</i>	44
Chapter 4: Web Server Operations	47
<i>Overview of the DSR1021/1022 Web Server</i>	47
<i>Viewing and Selecting Ports and Servers</i>	47
<i>About the DSR Explorer Window</i>	48
<i>Using the side navigation bar</i>	49
<i>Using the top option bar</i>	49
<i>Launching a KVM session</i>	50
<i>Managing a DSR web server device</i>	51
<i>Managing Local Accounts</i>	52
<i>Managing Device Properties</i>	53
<i>Power Controlling Target Devices</i>	54
Chapter 5: The Video Viewer	55
<i>About the Video Viewer Window</i>	55
<i>Video Viewer minimum requirements</i>	55

<i>Launching a KVM Session</i>	56
<i>Video Viewer Window Features</i>	57
<i>Changing the toolbar</i>	59
<i>Setting the Window Size</i>	59
<i>Adjusting the View</i>	60
<i>Adjusting color depth</i>	61
<i>Additional Video Adjustment</i>	62
<i>Adjusting Mouse Options</i>	64
<i>Using Keyboard Pass-through</i>	67
<i>Using Macros</i>	68
<i>Saving the View</i>	68
<i>Closing a Video Viewer Window Session</i>	69
Chapter 6: Terminal Operations	71
<i>The Console Menu</i>	71
<i>Network Configuration</i>	71
<i>Other Console Main Menu Options</i>	74
<i>Security Configuration</i>	74
<i>Local User Accounts</i>	74
<i>Console Password</i>	75
<i>Reset Certificates</i>	75
<i>Secure Mode</i>	76
<i>Firmware Management</i>	76
<i>Enable Debug Messages</i>	76
<i>Restore Factory Defaults</i>	76
<i>Reset Appliance</i>	76
<i>Exit</i>	76
Appendices	77
<i>Appendix A: FLASH Upgrades</i>	77
<i>Appendix B: Using DSView Software Over a Modem Connection</i>	79
<i>Appendix C: Using DSRIQ-SRL Modules</i>	80
<i>Appendix D: UTP Cabling</i>	84
<i>Appendix E: Technical Specifications</i>	86
<i>Appendix F: Sun Advanced Key Emulation</i>	88
<i>Appendix G: Technical Support</i>	90

Index..... 91

LIST OF FIGURES

<i>Figure 1.1: Example DSR1021/1022 Switch Configuration</i>	3
<i>Figure 1.2: The DSR1021 Switch</i>	3
<i>Figure 1.3: The DSR1022 Switch</i>	4
<i>Figure 2.1: Basic DSR1021 Switch Configuration</i>	7
<i>Figure 3.1: Main Dialog Box</i>	21
<i>Figure 3.2: Setup Dialog Box</i>	26
<i>Figure 3.3: Names Dialog Box</i>	27
<i>Figure 3.4: Name Modify Dialog Box</i>	27
<i>Figure 3.5: Devices Dialog Box</i>	28
<i>Figure 3.6: Device Modify Dialog Box</i>	29
<i>Figure 3.7: Menu Dialog Box</i>	30
<i>Figure 3.8: Flag Dialog Box</i>	32
<i>Figure 3.9: Position Flag</i>	32
<i>Figure 3.10: Broadcast Dialog Box</i>	33
<i>Figure 3.11: Scan Dialog Box</i>	35
<i>Figure 3.12: Commands Dialog Box</i>	36
<i>Figure 3.13: Screen Saver Dialog Box</i>	38
<i>Figure 3.14: Keyboard Dialog Box</i>	40
<i>Figure 3.15: Commands Dialog Box</i>	41
<i>Figure 3.16: User Status Dialog Box</i>	42
<i>Figure 3.17: Disconnect Dialog Box</i>	43
<i>Figure 3.18: Version Dialog Box</i>	44
<i>Figure 3.19: DSRIQ Selection Dialog Box</i>	45
<i>Figure 3.20: DSRIQ Version Dialog Box</i>	45
<i>Figure 4.1: Avocent DSR Explorer Window</i>	48
<i>Figure 4.2: Side Navigation Bar</i>	49
<i>Figure 5.1: Video Viewer Window (Normal Window Mode)</i>	57
<i>Figure 5.2: Manual Video Adjust Dialog Box</i>	62
<i>Figure 5.3: Video Viewer Window with Local and Remote Cursors Displayed</i>	65
<i>Figure 6.1: Console Main Menu</i>	72
<i>Figure 6.2: Network Configuration Menu</i>	73

LIST OF TABLES

<i>Table 3.1: OSCAR Interface Status Symbols</i>	22
<i>Table 3.2: OSCAR Interface Navigation Basics</i>	24
<i>Table 3.3: Setup Features to Configure the OSCAR Interface</i>	25
<i>Table 3.4: OSCAR Interface Status Flags</i>	31
<i>Table 3.5: Commands to Manage Routine Tasks for Target Devices</i>	41
<i>Table 4.1: DSR Explorer Window Area Descriptions</i>	48
<i>Table 4.2: Viewing Appliance Information</i>	53
<i>Table 5.1: Video Viewer Window Descriptions</i>	58
<i>Table 5.2: Manual Video Adjust Dialog Box Descriptions</i>	63
<i>Table C.1: DSRIQ-SRL Module Pinouts</i>	83
<i>Table D.1: UTP Wiring Standards</i>	84
<i>Table E.1: DSR1021/1022 Switch Product Specifications</i>	86
<i>Table F.1: Sun Key Emulation</i>	88
<i>Table F.2: PS/2-to-USB Keyboard Mappings</i>	89

Product Overview

Features and Benefits

Avocent DSR® switches combine analog and digital technology to provide flexible, centralized control of data center servers and facilitate the OA&M (operations, activation and maintenance) of remote branch offices where trained operators may be unavailable. They provide enterprise customers with a significant reduction of cable volume, secure remote access and flexible server management from anywhere at anytime.

Each DSR1021/1022 switch model consists of a rack mountable keyboard, video and mouse (KVM) switch, configurable for analog (local) or digital (remote) connectivity. Video resolutions are supported up to 1280 x 1024 for remote users. Enhanced video quality of up to 1600 x 1200 is available to local users via the video port.

The DSR1021/1022 switch has user peripheral ports for PS/2 keyboards and mice and an SPC port that may be used to connect to an SPC power control device. An SPC device is an 8- or 16-outlet device that you can use to control the power state of any attached target devices through the embedded web server or the DSView 3 software.

Users can access target devices across a 100BaseT LAN port that is used to establish an Ethernet connection, or directly through a local port. Each DSR1021/1022 switch model includes a MODEM port that supports V.34, V.90 or V.92-compatible modems that may be used to access the switch when an Ethernet connection is not available.

The only significant difference between the two models described in this manual is that the DSR1021 supports control of up to eight target devices, while the DSR1022 supports control of up to four target devices. The IP-based DSR1021/1022 switches give you flexible target device management control from anywhere in the world.

Reduce cable bulk

With server densities continually increasing, cable bulk remains a major concern for network administrators. The DSR1021/1022 switches significantly reduce KVM cable volume in the rack by utilizing the innovative DSRIQ module and single, industry-standard Unshielded Twisted Pair (UTP) CAT 5 cabling. This allows a higher server density while providing greater airflow and cooling capacity.

The DSRIQ module is powered directly from the target device and provides Keep Alive functionality when the DSR1021/1022 switch is not powered.

The DSRIQ-SRL (serial) module is a DCE device that provides the primary interface between a serial device and a DSR1021/1022 switch. It provides VT100 terminal emulation, break suppression and port history in a compact, convenient module.

Access the DSR1021/1022 switch via network connection

No special software or drivers are required on the attached, or client, computers.

NOTE: The client connects to the server housing the DSView® management software using an Internet browser. For modem access, you must install DSR Remote Operations software included on the DSView 3 software D-ROM (see the *DSView Installer/User Guide* for more information).

Users access the DSR1021/1022 switch and all attached systems via Ethernet or using a V.34, V.90 or V.92 modem from a client computer, such as a PC. Clients can be located anywhere a valid network connection exists.

Two modes of access to the DSR1021/1022 switch

You can access the DSR1021/1022 switch in one of the following ways:

- through a built-in web server that manages basic switching tasks
- or-
- as your needs grow, by upgrading to the DSView 3 software to manage every KVM switch in your installation from one simple-to-use web interface

Simple access to any target device

When a user accesses the DSR1021/1022 switch, a listing displays all target devices to which the user has permission to view and manage. When a user selects a target device from the list, the video of the selected target device displays in a Video Viewer window. For more information about the Video Viewer, see Chapter 5.

Figure 1.1 on page 3 illustrates an example of a typical DSR1021/1022 switch configuration.

Figure 1.2 on page 3 illustrates and describes the DSR1021 switch.

Figure 1.3 on page 4 illustrates and describes the DSR1022 switch.

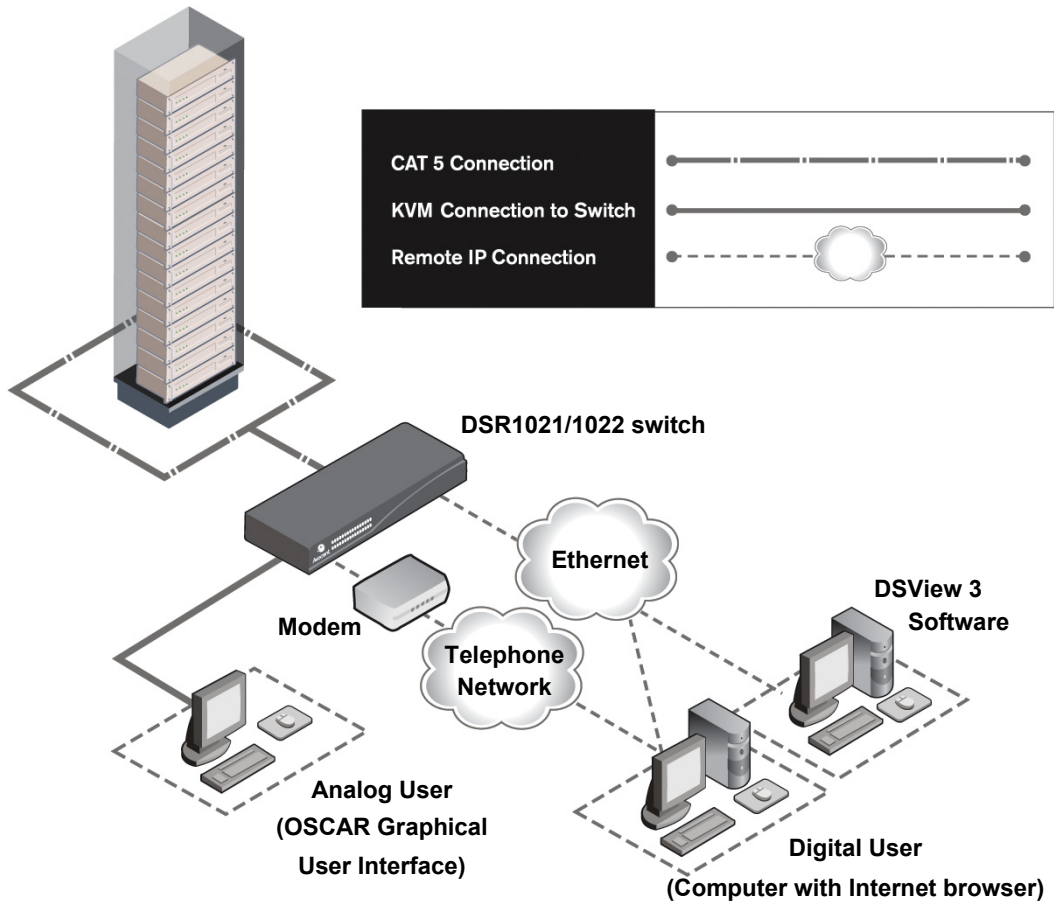


Figure 1.1: Example DSR1021/1022 Switch Configuration

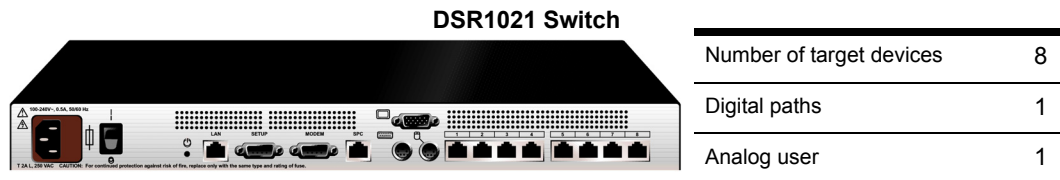


Figure 1.2: The DSR1021 Switch

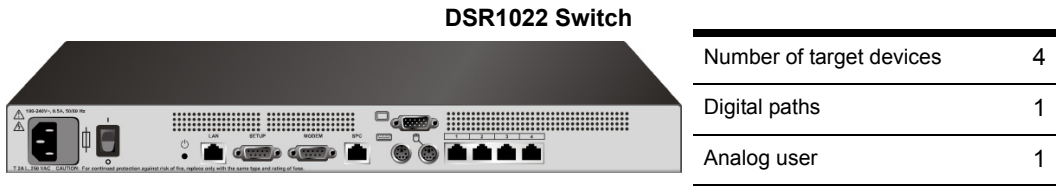


Figure 1.3: The DSR1022 Switch

Safety Precautions

To avoid potential video and keyboard problems when using Avocent products:

- If the building has 3-phase AC power, ensure that the computer and monitor are on the same phase. For best results, they should be on the same circuit.

To avoid potentially fatal shock hazard and possible damage to equipment, please observe the following precautions:

- Do not use a 2-wire power cord in any Avocent product configuration.
- Test AC outlets at the target device and monitor for proper polarity and grounding.
- Use only with grounded outlets at both the target device and monitor. When using a backup Uninterruptible Power Supply (UPS), power the target device, the monitor and the DSR1021/1022 switch from the UPS.

NOTE: The AC inlet is the main power disconnect.

Rack Mount Safety Considerations

- **Elevated Ambient Temperature:** If installed in a closed rack assembly, the operating temperature of the rack environment may be greater than room ambient. Use care not to exceed the rated maximum ambient temperature of the switch.
- **Reduced Air Flow:** Installation of the equipment in a rack should be such that the amount of airflow required for safe operation of the equipment is not compromised.
- **Mechanical Loading:** Mounting of the equipment in the rack should be such that a hazardous condition is not achieved due to uneven mechanical loading.
- **Circuit Overloading:** Consideration should be given to the connection of the equipment to the supply circuit and the effect that overloading of circuits might have on overcurrent protection and supply wiring. Consider equipment nameplate ratings for maximum current.
- **Reliable Earthing:** Reliable earthing of rack mounted equipment should be maintained. Pay particular attention to supply connections other than direct connections to the branch circuit (for example, use of power strips).

DSR 1021/1022 Switch Connectivity

The DSR1021/1022 switching system can connect to a server running the DSView 3 software. DSView 3 software allows a user to view and control target devices (one at a time) attached to the DSR1021/1022 switching system. For more information on the DSView 3 software, see the *DSView Installer/User Guide*.

The DSR1021/1022 switching system transmits keyboard, video and mouse (KVM) information between operators and target devices attached to the DSR1021/1022 switch over a network using either an Ethernet connection or a modem connection.

The DSR1021/1022 switch uses TCP/IP for communication over Ethernet. Although 10BaseT Ethernet may be used, Avocent recommends a dedicated, switched 100BaseT network.

The DSR1021/1022 switch also uses Point-to-Point Protocol (PPP) for communication over a V.34, V.90 or V.92 modem.

You can perform KVM switching tasks by using one of the following:

- the web server built into the switch
- -or-
- DSView 3 software

The installation instructions in this chapter pertain to the hardware installation and configurations of the DSR1021/1022 switch and the built-in web server. If you plan to use the DSView 3 software for access, please refer to the *DSView 3 Quick Install Guide* that is included with the DSView 3 software package.

Installation Overview

The general procedure for setting up and installing the DSR1021/1022 switch is as follows:

Setting up your network

The DSR1021/1022 switching system uses IP addresses to uniquely identify the switch and the target devices. The DSR1021/1022 switch supports both Dynamic Host Configuration Protocol (DHCP) and static IP addressing. Avocent recommends that IP addresses be reserved for each switch and that they remain static while the DSR1021/1022 switches are connected to the network.

For additional information on setting up the DSR1021/1022 switch using the DSView 3 software, and for information on how the DSR1021/1022 switch uses TCP/IP, see the *DSView Installer/User Guide* or DSView 3 Online Help.

Installing the DSR1021/1022 switch

1. Unpack the DSR1021/1022 switch and verify that all components are present and in good condition. See the *Getting Started* section on page 8 for specific information.
2. Make all hardware connections between the power source, DSR1021/1022 switch, target devices, optional SPC device, the Ethernet and the optional modem connection. See the *Connecting the DSR1021/1022 Switch Hardware* section on page 8 for detailed instructions.
3. Turn on the power and verify that all connections are working. See the *Verifying the Connections* section on page 10 for more information.
4. If you are accessing the DSR1021/1022 switch through the web server and configuring the switch using the console menu interface, do that at this point. See Chapter 6 for detailed instructions.

-or-

Otherwise, use the DSView 3 software to configure the DSR1021/1022 switch. See the *DSView Installer/User Guide* or DSView 3 Online Help for detailed instructions.

5. Make the appropriate adjustments to your mouse settings. See the *Adjusting Mouse Settings on Target Devices* section on page 11 for instructions.

Figure 2.1 on page 7 illustrates one possible configuration for your DSR1021/1022 switch.

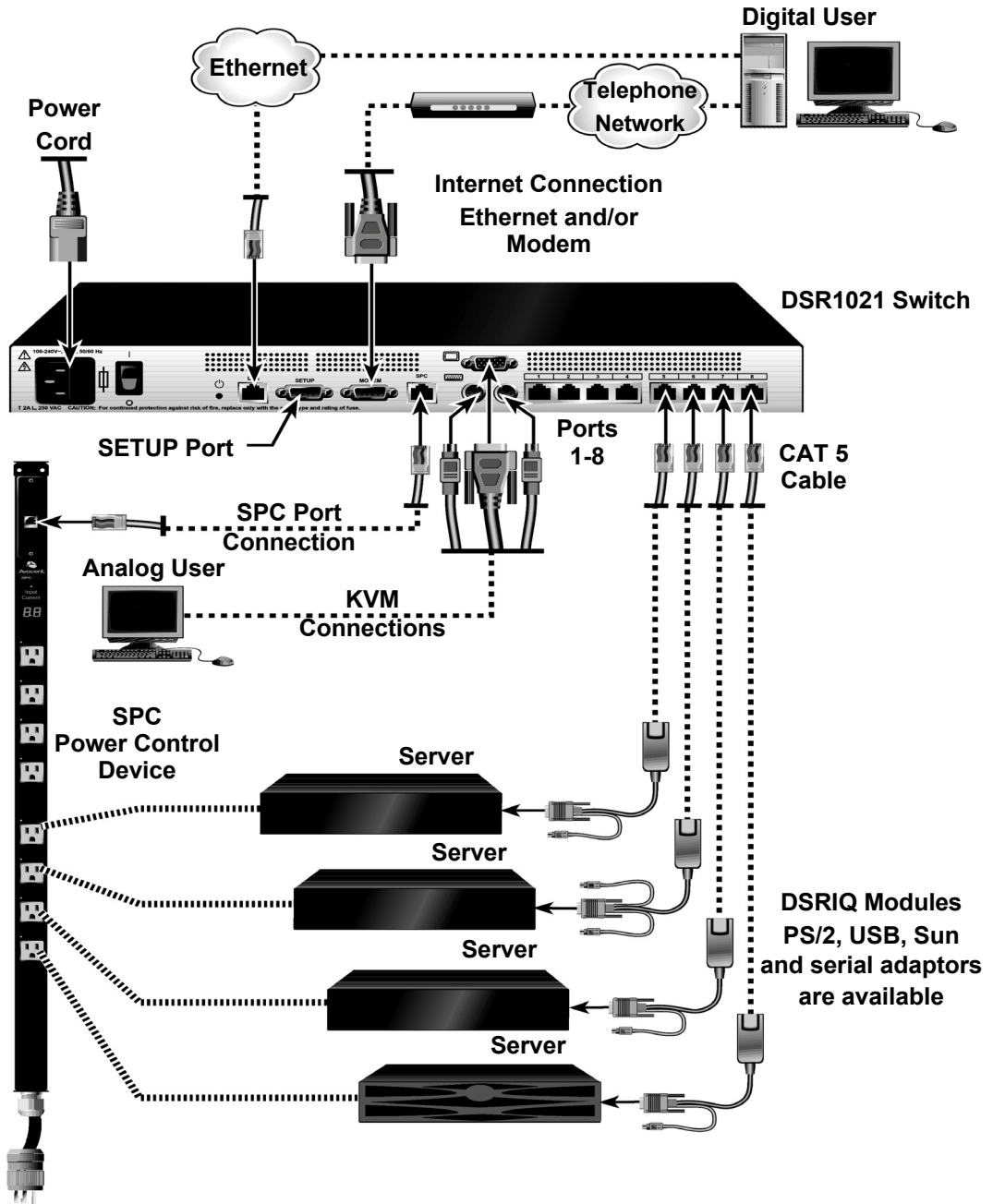


Figure 2.1: Basic DSR1021 Switch Configuration

Getting Started

Before installing your DSR1021/1022 switch, refer to the following lists to ensure you have all items that shipped with the DSR1021/1022 switch as well as other items necessary for proper installation.

Items supplied with the DSR1021/1022 switch

The following items are shipped with the DSR1021/1022 switch:

- local country power cord
- rack mounting brackets
- null modem cable
- *DSR1021/1022 Installer/User Guide* (this manual)
- *DSR1021/1022 Quick Installation Guide*

Additional items needed

Additional items needed for installation of the DSR1021/1022 switch include the following:

- one DSRIQ module per target server or DSRIQ-SRL module per serial device
- one CAT 5 patch cable per DSRIQ module (4-pair UTP, up to 10 meters)
- one CAT 5 patch cable for network connectivity (4-pair UTP, up to 10 meters)
- (Optional) DSView 3 software
- (Optional) V.34, V.90 or V.92-compatible modem and cables
- (Optional) SPC power control device

Connecting the DSR1021/1022 Switch Hardware

NOTE: The DSR1021/1022 switch may be rack mounted in a 1U configuration. The DSR1021/1022 switch does not support a 0U configuration.

To connect and power on your DSR1021/1022 switch:

1. Power off the target devices that will be part of your DSR1021/1022 switching system. Locate the power cord that came with the DSR1021/1022 switch. Plug one end into the power socket on the back panel of the DSR1021/1022 switch. Plug the other end into a grounded AC wall outlet.



WARNING: To reduce the risk of electric shock or damage to your equipment:

- Do not disable the power cord grounding plug. The grounding plug is an important safety feature.
 - Plug the power cord into a grounded (earthed) outlet that is easily accessible at all times.
 - Disconnect the power from the switch by unplugging the power cord from either the electrical outlet or the appliance.
-

2. Plug the VGA monitor and PS/2 keyboard and mouse cables into the corresponding DSR1021/1022 switch ports. You must install both a keyboard and mouse on the local port, or the keyboard will not initialize properly.
3. Choose an available numbered port on the back panel of the DSR1021/1022 switch. Plug one end of a CAT 5 patch cable (4-pair, up to 10 meters) into the selected port and plug the other end into the RJ-45 connector of a DSRIQ module.
4. Plug the DSRIQ module into the corresponding ports on the back panel of the target server. Repeat this procedure for all servers that are to be connected to the DSR1021/1022 switch. See the *To connect a DSRIQ module to a server* procedure on page 9 and the *To connect a DSRIQ module to a serial device* procedure on page 10 for more information.
5. Plug a CAT 5 patch cable from your Ethernet network into the LAN port on the back of the DSR1021/1022 switch. Network users will access the DSR1021/1022 switch through this port.
6. (Optional) The DSR1021/1022 switch can also be accessed using a ITU V.92, V.90 or V.34-compatible modem. Plug the 9-pin serial cable into the MODEM port on the back of the DSR1021/1022 switch. Plug the other end into the connector on the modem.

NOTE: Using a modem connection instead of a LAN connection will limit the performance capability of your DSR1021/1022 switch.

7. (Optional) Plug one end of the cable supplied with the SPC power control device into the SPC port on the DSR1021/1022 switch and plug the other end into an SPC device. Plug the power cords from the target servers into the SPC device power outlets. Plug the SPC device into an appropriate AC wall outlet.
8. If you are configuring the DSR1021/1022 switch using the console menu interface, use the supplied null modem cable to connect a terminal or PC running terminal emulation software (such as HyperTerminal®) to the SETUP port on the back panel of the DSR1021/1022 switch. Set the terminal to 9600 bits per second (bps), 8 bits, 1 stop bit, no parity and no flow control.
9. Power up each target device and then power up the DSR1021/1022 switch. After approximately one minute, the switch completes initialization and displays the OSCAR® graphical user interface *Free* tag on the local port monitor.
10. If you did not use the console menu interface to configure the DSR1021/1022 switch, use the DSView 3 software to configure the switch. See the *DSView Installer/User Guide* or the DSView 3 Online Help for detailed instructions.

To connect a DSRIQ module to a server:

1. Attach the color-coded connectors of a DSRIQ module to the corresponding keyboard, monitor and mouse ports on the server you will be connecting to the DSR1021/1022 switch.

2. Attach one end of the CAT 5 patch cable to the RJ-45 connector on the DSRIQ module. Connect the other end of the CAT 5 patch cable to the desired port on the back panel of the DSR1021/1022 switch.
3. Repeat this procedure for all servers you wish to attach.

NOTE: When connecting a Sun DSRIQ module, you must use a multi-sync monitor in the local port to accommodate Sun computers that support both VGA and sync-on-green or composite sync.

To connect a DSRIQ module to a serial device:

1. Attach the DSRIQ-SRL module 9-pin serial connector to the serial port of the device you will be connecting to the DSR1021/1022 switch.
2. Attach one end of the CAT 5 patch cable to the RJ-45 connector on the DSRIQ-SRL module. Connect the other end of the CAT 5 patch cable to the desired port on the back panel of the DSR1021/1022 switch.

NOTE: The DSRIQ-SRL module is a DCE device and supports only VT100 terminal emulation.

3. Connect the power supply to the power connector on your DSRIQ-SRL module. The cable expander can be used to power up to four DSRIQ-SRL modules from a single power supply.
4. Connect the DSRIQ-SRL module power supply to an appropriate AC wall outlet. Power up your serial device. See *Appendix C* on page 80 for more information on DSRIQ-SRL modules.

Verifying the Connections

Verify the connections between the DSR1021/1022 switch, DSRIQ modules and serial devices by reading the status of the LEDs on the DSR1021/1022 switch and the DSRIQ module.

DSR1021/1022 switch

The front panel of the DSR1021/1022 switch features two LEDs indicating the Ethernet connection.

- The top green LED, labeled *Link*, illuminates when a valid connection to the network is established and blinks when there is activity on the port.
- The lower amber LED, labeled *100M*, indicates that you are communicating at the 100 Mbps rate when using an Ethernet connection.

Additionally, the two LEDs above each port number on the front panel of the DSR1021/1022 switch indicate the target device status.

- The green LED illuminates when the attached target device is powered on.
- The amber LED illuminates when that port is selected.

DSRIQ modules

NOTE: PS/2, Sun and USB DSRIQ modules are available for attaching computers to your DSR1021/1022 switch.

Use the DSRIQ-SRL serial module to connect serial devices to the DSR1021/1022 switch. The DSRIQ-SRL features two green LEDs: a *POWER* LED and a *STATUS* LED.

- The *POWER* LED indicates that the attached DSRIQ-SRL is powered on.
- The *STATUS* LED indicates that a valid selection has been made to a DSR1021/1022 switch.

The DSRIQ-SRL module prevents a serial break from the attached device if the module loses power. However, a user can generate a serial break with the attached device by pressing **Alt-B** after accessing the Terminal Applications menu.

Configuring the Web Server and DSView 3 Software

Setting up the built-in web server

You can access the DSR1021/1022 switch via an embedded web server that handles most day-to-day switching tasks. Before using the web server to access the switch, first specify an IP address through the SETUP port on the back panel of the switch. See Chapter 5 for detailed instructions on how to use the SETUP port and web server to configure the switch.

Setting Up the DSView Software

See the *DSView Installer/User Guide* that ships with your software, or refer to the DSView 3 Online Help.

Adjusting Mouse Settings on Target Devices

Before a computer connected to the DSR1021/1022 switch can be used for remote user control, you must set the target mouse speed and turn off acceleration. For machines running Microsoft® Windows® (Windows NT®, 2000, XP, Server 2003), use the default PS/2 mouse driver.

To ensure that the local mouse movement and remote cursor display remain in sync, mouse acceleration needs to be set to “none” for all user accounts accessing a remote system using a KVM switch. Mouse acceleration should also be set to “none” on every remote system. Special cursors should not be used and cursor visibility options, such as pointer trails, **Ctrl** key cursor location animations, cursor shadowing and cursor hiding should also be turned off.

This section explains the steps for setting mouse movement and cursor features for use with Avocent hardware products and DSView® management software with the following operating systems:

- Microsoft® Windows®
 - NT 4.0
 - 2000
 - XP
 - Server 2003
 - IntelliPoint® drivers
- LINUX®
 - Red Hat® (pre-8.0, 8.0 and later, and Enterprise)
 - SUSE®
- UNIX® Sun Solaris® (versions 9 and 10)
- Novell® NetWare®
- Apple® MAC® OS X

NOTE: If you are not able to turn off mouse acceleration from within your operating system (OS), or if you do not desire to adjust the settings of all your servers, newer versions of the DSView software include the *Tools - Single Cursor Mode* command available in the Video Viewer window. This command places the Video Viewer window into an "invisible mouse" mode which allows you to manually toggle control between the mouse pointer on the target system being viewed and the mouse pointer on the client running DSView software. See Chapter 5 for more information about the Video Viewer.

Microsoft Windows

NOTE: Avocent highly recommends that all Microsoft® Windows systems attached to the DS1800 digital switch, DSR1021/1022 switches, CCM console management appliances and SwitchView IP remote access devices use the default Windows PS/2 mouse driver.

To adjust the mouse speed and cursor settings for NT 4.0 (using default drivers):

1. From the Desktop, select *Start - Settings - Control Panel* to open the Control Panel window.
2. From the Control Panel, double-click the *Mouse* icon to open the Mouse Properties dialog box.
3. Click the *Motion* tab.
4. Set the Pointer speed slider to *Slow* (the leftmost tick mark).
5. Make sure the Snap to default checkbox is unchecked.
6. Click *OK* to close the Mouse Properties dialog box and to save your settings.

7. Resynchronize the mouse in the software remote session window for the Avocent management software you are using:
 - If you are using DSView software version 2.x or earlier, click *Mouse Align*.
 - If you are using DSView software version 3.0 or later, click *Align Local Cursor*.
 - If you are using the AVWorks® cross-platform management application, click *Screen Refresh*.

The mouse resynchronizes and should work properly.

To adjust the mouse speed and cursor settings for Windows 2000 (using default drivers):

1. From the Desktop, select *Start - Settings - Control Panel* to open the Control Panel window.
2. From the Control Panel, double-click the *Mouse* icon to open the Mouse Properties dialog box.
3. Click the *Motion* tab.
4. Set the Speed slider to the default of 50% (the sixth tick mark from the left).
5. Set the Acceleration option to *None*.
6. Make sure the Snap to default checkbox is unchecked.
7. Click *OK* to close the Mouse Properties dialog box and to save your settings.
8. Resynchronize the mouse in the software remote session window for the Avocent management software you are using:
 - If you are using DSView software version 2.x or earlier, click *Mouse Align*.
 - If you are using DSView software version 3.0 or later, click *Align Local Cursor*.
 - If you are using the AVWorks software, click *Screen Refresh*.

The mouse resynchronizes and should work properly.

To adjust the mouse speed and cursor settings for Windows XP or Windows Server 2003 (using default drivers):

1. From the Desktop, select *Start - Control Panel* to open the Control Panel window.
2. From the Control Panel, double-click the *Mouse* icon to open the Mouse Properties dialog box.
3. Click the *Pointer Options* tab.
4. Set the Select a pointer speed slider to the default of midpoint (the fifth tick mark from the left).
5. Uncheck the Enhance pointer precision checkbox.
6. Make sure the Snap To and the Visibility checkboxes are unchecked.
7. Click *OK* to close the Mouse Properties dialog box and to save your settings.

8. Resynchronize the mouse in the software remote session window for the Avocent management software you are using:
 - If you are using DSView software version 2.x or earlier, click *Mouse Align*.
 - If you are using DSView software version 3.0 or later, click *Align Local Cursor*.
 - If you are using the AVWorks software, click *Screen Refresh*.

The mouse resynchronizes and should work properly.

To adjust the mouse speed and cursor settings for IntelliPoint drivers:

1. From the Desktop, select *Start - Control Panel* to open the Control Panel window.
2. From the Control Panel, double-click the *Mouse* icon to open the Mouse Properties dialog box.
3. Click the *Pointer Options* tab.
4. Set the Select a pointer speed slider to the default of midpoint (the fifth tick mark from the left).
5. Uncheck the Enhance pointer precision checkbox.
6. Make sure the Snap To and the Visibility checkboxes are unchecked.
7. Click the *Wheel* tab.
8. Uncheck the Enable accelerated scrolling ... checkbox.
9. Click *OK* to close the Mouse Properties dialog box and to save your settings.
10. Resynchronize the mouse in the software remote session window for the Avocent management software you are using:
 - If you are using DSView software version 2.x or earlier, click *Mouse Align*.
 - If you are using DSView software version 3.0 or later, click *Align Local Cursor*.
 - If you are using the AVWorks software, click *Screen Refresh*.

The mouse resynchronizes and should work properly.

LINUX

NOTE: Red Hat and SUSE support several standard graphical user interfaces. For this document, the Red Hat-modified version of the GNOME graphical interface is shown, and the SUSE-modified version of the KDE interface is shown. If your Red Hat installation uses the KDE graphical user interface, see the SUSE section or refer to the KDE documentation online. If your SUSE installation uses the GNOME interface, refer to the Red Hat section or refer to the GNOME documentation online.

To adjust the mouse speed and cursor settings for Red Hat LINUX pre-8.0 drivers (modified GNOME GUI):

1. From the Workspace Menu, click the *Desktop Manager* icon and select *Application Manager - Desktop_Controls* to open the Control Center dialog box.

2. From the tree view, select *Peripherals - Mouse* to list the mouse settings.
3. Set the Acceleration slider to the center position.
4. (Optional) Select the desired Mouse buttons option and set the Threshold slider to the desired position.
5. Click *OK* to close the Control Center dialog box and to save your settings.
6. Resynchronize the mouse in the software remote session window for the Avocent management software you are using.
 - If you are using DSView software version 2.x or earlier, click *Mouse Align*.
 - If you are using DSView software version 3.0 or later, click *Align Local Cursor*.
 - If you are using the AVWorks software, click *Screen Refresh*.The mouse resynchronizes and should work properly.

To adjust the mouse speed and cursor settings for Red Hat LINUX 8.0 and later drivers:

1. Click the Red Hat icon.
2. Select *Preferences - Mouse* to open the Mouse Preferences dialog box.
3. Click the *Motion* tab.
4. Set the Acceleration slider slightly left of the center position.

NOTE: The sliders in Red Hat LINUX versions 8 and above do not contain numbers or tick marks. Proper alignment may be achieved only by trial and error.

5. (Optional) Set the Sensitivity and Threshold sliders to the desired positions.
6. Click *Close* to close the Mouse Preferences dialog box and to save your settings.
7. Resynchronize the mouse in the software remote session window for the Avocent management software you are using.
 - If you are using DSView software version 2.x or earlier, click *Mouse Align*.
 - If you are using DSView software version 3.0 or later, click *Align Local Cursor*.
 - If you are using the AVWorks software, click *Screen Refresh*.
8. Test the mouse motion in the Video Viewer window.
9. If necessary, repeat steps 4 to 8 until the mouse is properly aligned.

To adjust the mouse speed and cursor settings for Red Hat Enterprise LINUX drivers:

There are two ways to open the Mouse dialog box:

- To open the Mouse dialog box using a menu, go to step 1.
 - To open the Mouse dialog box using icons, go to step 4.
1. Click the *Main Menu* icon.
 2. Select *Programs - Settings - Peripherals - Mouse* to open the Mouse dialog box.
 3. Go to step 8.
 4. Click the *Start Here* icon to open the Start Here dialog box.
 5. Click the *Preferences* icon to open the Control Center dialog box.
 6. Click the *Peripherals* icon to open the Peripherals dialog box.
 7. Click the *Mouse* icon to open the Mouse dialog box.
 8. Set the Acceleration slider to the middle position.
 9. (Optional) Select the desired Mouse buttons option and set the Threshold slider to the desired position.
 10. Click *OK* to close the Mouse dialog box and to save your settings.
 11. Resynchronize the mouse in the software remote session window for the Avocent management software you are using.
 - If you are using DSView software version 2.x or earlier, click *Mouse Align*.
 - If you are using DSView software version 3.0 or later, click *Align Local Cursor*.
 - If you are using the AVWorks software, click *Screen Refresh*.
- The mouse resynchronizes and should work properly.

To adjust the mouse speed and cursor settings for SUSE LINUX drivers:

1. Click the SUSE icon and select *Control Center*. (By default, SUSE uses a modified version of the KDE graphical user interface.)
2. Click anywhere in the screen area to open the Behavior (first time use default) - Control Center window where you clicked.
3. If the Index side navigation bar is shown in tree view, click the plus symbol (+) next to *Peripherals* to display the submenu items. Otherwise, select *Peripherals*.
4. Select the *Mouse* option to display the Mouse - Control Center dialog box.
5. Click the *Advanced* tab.
6. Set the Pointer acceleration slider to the leftmost position (1.0x).

7. (Optional) Set the Pointer threshold, Double click interval, Drag start time, Drag start distance and Mouse wheel scrolls by sliders to the desired positions.
8. If necessary, click *Defaults* to restore the default settings.
9. Click *Apply* to save your settings.
10. Click the *X* button in the upper-right corner to close the Mouse - Control Center dialog box.
11. Resynchronize the mouse in the software remote session window for the Avocent management software you are using:
 - If you are using DSView 2.x or earlier software, click *Mouse Align*.
 - If you are using DSView 3.0 or later software, click *Align Local Cursor*.
 - If you are using the AVWorks software, click *Screen Refresh*.

The mouse resynchronizes and should work properly.

UNIX

To adjust the mouse speed and cursor settings for Sun Solaris v9 drivers:

NOTE: To use a Sun Solaris driver with the DSView software and DSR1021/1022 switch, you must have the following versions of DSView software on your host system and DSR1021/1022 switch firmware:

- DSView software version 2.x and earlier - DS Management Software suite version 1.0.9.202 or later
 - DSR1021/1022 switch with DSView software version 2.x and earlier - Firmware version 1.0.0.106 to 2.x
 - DSR1021/1022 switch with DSView software 3.0 and later - Firmware version 3.0 or later
-

1. From the Workspace Menu, select *Desktop Manager* and go to step 3.
- or -
Click on the tab above the Text Note control and select *Applications* to open the Application Manager window.
2. Click the *Desktop_Controls* icon to open the Application Manager - Desktop_Controls window.
3. Double-click the *Mouse Style Manager* icon to open the Style Manager toolbar and Style Manager - Mouse dialog box.
4. In the Style Manager - Mouse dialog box, set the Acceleration slider to 1.0.
5. (Optional) Select the desired Handedness and Button 2 options and set the Double-Click and the Threshold sliders to the desired positions. Test the double-click speed by double-clicking on the mouse icon.
6. Click *OK* to close the dialog box and to save your settings.
7. If you are using DSView or AVWorks software, select *Video - Scaling - Auto Scale* in any active remote session window.

8. Set the mouse scaling to normal by performing the following actions:
 - a. From the Video Viewer menu, select *Tools - Session Options* to open the Session Options dialog box.
 - b. Click the *Mouse* tab.
 - c. In the Mouse Scaling area, select the *Default* radio button.
 - d. Click *OK* to close the Session Options dialog box and to save your settings.
9. Resynchronize the mouse in the software remote session window for the Avocent management software you are using:
 - If you are using DSView software version 2.x or earlier, click *Mouse Align*.
 - If you are using DSView software version 3.0 or later, click *Align Local Cursor*.
 - If you are using the AVWorks software, click *Screen Refresh*.

The mouse resynchronizes and should work properly.

To adjust the mouse speed and cursor settings for Sun Solaris v10 drivers:

NOTE:To use a Sun Solaris driver with the DSView software and DSR1021/1022 switch, you must have the following versions of DSView software on your host system and DSR1021/1022 switch firmware:

- DSView software version 2.x and earlier - DS Management Software suite version 1.0.9.202 or later
 - DSR1021/1022 switch with DSView software version 2.x and earlier - Firmware version 1.0.0.106 to 2.x
 - DSR1021/1022 switch with DSView software 3.0 and later - Firmware version 3.0 or later
-

1. In the Front Panel dashboard, click the *Style Manager* icon to open the Style Manager toolbar.
2. Double-click the *Mouse* icon to open the Style Manager - Mouse dialog box.
3. In the Style Manager - Mouse dialog box, set the Acceleration slider to 1.0.
4. (Optional) Select the desired Handedness and Button 2 options and set the Double-Click and the Threshold sliders to the desired positions. Test the double-click speed by double-clicking on the mouse icon.
5. Click *OK* to close the dialog box and to save your settings.
6. If you are using DSView or AVWorks software, select *Video - Scaling - Auto Scale* in any active remote session window.
7. Set the mouse scaling to normal by performing the following actions:
 - a. From the Video Viewer menu, select *Tools - Session Options* to open the Session Options dialog box.
 - b. Click the *Mouse* tab.
 - c. In the Mouse Scaling area, select the *Default* setting.
 - d. Click *OK* to close the Sessions Options dialog box and to save your settings.

8. Resynchronize the mouse in the software remote session window for the Avocent management software you are using.
 - If you are using DSView software version 2.x or earlier, click *Mouse Align*.
 - If you are using DSView software version 3.0 or later, click *Align Local Cursor*.
 - If you are using the AVWorks software, click *Screen Refresh*.The mouse resynchronizes and should work properly.

Novell NetWare

To adjust the mouse speed and cursor settings for NetWare Versions 5 and 6 drivers:

Novell NetWare versions 5 and 6 are not delivered with a method for changing the mouse acceleration. An NLM (NetWare Loadable Module) jointly developed by Avocent and Novell is available from the Avocent web site which may be used to properly align the mouse.

1. In a web browser, enter <http://www.avocent.com> to visit the Avocent web site home page.
2. On the Avocent web site home page, click the *Support* link to go to the Technical Support web page.
3. On the Technical Support web page, click the *Knowledge Base* link to go to a page containing Avocent hardware and software products.
4. Select the *DSView* link to list DSView software subcategories to the right of the Avocent hardware and software products.
5. Select the *Configuration and Installation* link to go to a web page containing DSView software configuration and installation information appears.
6. Select the *DSView Software Mouse Alignment with Novell GUI Netware 5 and 6* link. The Technical & Support Notes web page appears.
7. Follow the instructions on the web page.

Apple Mac OS

To adjust the mouse speed and cursor settings for Version X (using default drivers):

1. Click the *Apple* icon.
2. Select *System Prefs* to open the System Prefs window.
3. Select *View - Mouse* to open the Mouse dialog box.
4. Set the Tracking Speed slider to the default of the fifth tick mark from the left.
5. (Optional) Set the Double-Click Speed slider to the desired position. Test the double-click speed by double-clicking a word in the text field below the slider.
6. Close the Mouse dialog box to save your settings.
7. Resynchronize the mouse in the software remote session window for the Avocent management software you are using.
 - If you are using DSView software version 2.x or earlier, click *Mouse Align*.
 - If you are using DSView software version 3.0 or later, click *Align Local Cursor*.
 - If you are using the AVWorks software, click *Screen Refresh*.

The mouse resynchronizes and should work properly.

Local Port Operation

Controlling Your System at the Local Port

The DSR1021/1022 switch includes a local port on the back panel. You can use this port to connect a keyboard, monitor and mouse to the switch for direct access. The DSR1021/1022 switch uses the OSCAR[®] graphical user interface, which has intuitive menus to configure your system and selected target devices. Targets can be identified by customizable names.

Viewing and Selecting Ports and Servers

Use the Main dialog box to view, configure and control target devices in the DSR1021/1022 switching system. You can view the target devices by name, by port or by the unique Electronic ID (EID) embedded in each DSRIQ module. When you first open the OSCAR interface, it generates a port list by default. The Port column indicates the port to which a target device is connected.

To access the OSCAR interface Main dialog box:

Press **Print Screen** on the keyboard to launch the OSCAR interface. The Main dialog box appears. Figure 3.1 shows the Main dialog box populated with sample data.

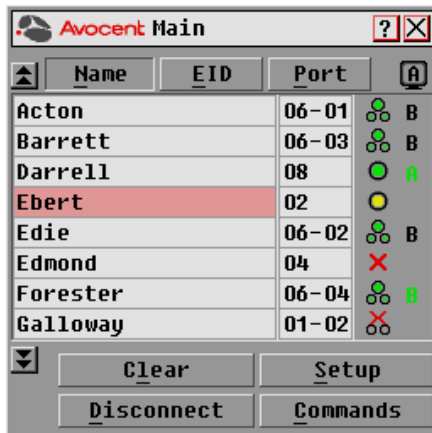









Figure 3.1: Main Dialog Box

Viewing the status of your DSR1021/1022 switching system

The status of target devices in your system is indicated in the far right columns of the Main dialog box. Table 3.1 describes the OSCAR interface status symbols.

Table 3.1: OSCAR Interface Status Symbols

Symbol	Description
	(green circle) Server is connected and powered on, and the DSRIQ module is online.
	Connected target device is powered off or is not operating properly and the DSRIQ module is offline.
	Connected switch is online.
	Connected switch is offline or not operating properly.
	(yellow circle) The designated DSRIQ module is being upgraded. When this symbol displays, do not cycle power to the DSR1021/1022 switch or connected target devices and do not disconnect DSRIQ modules. Doing so may render the module permanently inoperable and require the DSRIQ module to be returned to the factory for repair.
	(green letter) DSRIQ module is being accessed by the indicated user channel.
	(black letter) DSRIQ module is blocked by the indicated user channel. For instance, in Figure 3.1 on page 21, user B is viewing Forester but is blocking access to Acton, Barrett and Edie which are connected to the same DSRIQ module.

Selecting target devices

Use the Main dialog box to select target devices. When you select a target device, the DSR1021/1022 switch reconfigures the keyboard and mouse to the settings for the selected target device.

To select target devices:

Double-click the target device name, EID or port number.

-or-

If the display order of your list is by port (*Port* button is depressed), type the port number and press **Enter**.

-or-

If the display order of your list is by name or EID (*Name* or *EID* button is depressed), type the first few letters of the name of the target device or type the EID number to establish it as unique and press **Enter**.

To select the previous target device:

Press **Print Screen** and then **Backspace** on the keyboard. This key combination toggles you between the previous and current connections.

To disconnect from a target device:

Press **Print Screen** and then **Alt+0** (zero) on the keyboard. This leaves the user in a free state with no target device selected. The status flag on your desktop displays *Free*.

Soft switching

Soft switching is the ability to switch target devices using a hotkey sequence. You can soft switch to a target device by pressing **Print Screen** on the keyboard and then typing the first few characters of its name or number. If you have set a Screen Delay Time and you press the key sequences before that time has elapsed, the OSCAR interface will not display.

To configure the OSCAR interface screen delay:

1. Press **Print Screen** to start the OSCAR interface. The Main dialog box appears.
2. Click *Setup - Menu* to open the Menu dialog box.
3. For Screen Delay Time, type the number of seconds of delay desired before the Main dialog box is displayed after pressing **Print Screen**.
4. Click *OK*.

To soft switch to a target device:

1. Press **Print Screen**. If the display order of the Main dialog is by port (*Port* button is depressed), type the port number and press **Enter**.

-or-

If the display order of the Main dialog is by name (*Name* button is depressed), type the first few letters of the name of the target device to establish it as unique and press **Enter**.

2. To switch back to the previous target device, press **Print Screen** then **Backspace**.

Navigating the OSCAR Interface

This table describes how to navigate the OSCAR interface using the keyboard and mouse.

Table 3.2: OSCAR Interface Navigation Basics

Keystroke	Action Performed
Print Screen	Opens the OSCAR interface. Press Print Screen twice to send the Print Screen keystroke to the currently selected DSRIQ module.
F1	Opens the Help screen for the current dialog box.
Escape	Closes the current dialog box without saving changes and returns to the previous one. If the Main dialog box is displayed, pressing Escape closes the OSCAR interface and displays a status flag if status flags are enabled. See the <i>Controlling the status flag</i> section on page 31 in this chapter for more information. In a message box, pressing Escape closes the pop-up box and returns to the current dialog box.
Alt	Opens dialog boxes, selects or checks options, and executes actions when used with underlined or other designated letters.
Alt+X	Closes current dialog box and returns to previous one.
Alt+O	Selects the <i>OK</i> button, then returns to the previous dialog box.
Enter	Completes a switch operation in the Main dialog box and exits the OSCAR interface.
Single-click, Enter	In a text box, single-clicking an entry and pressing Enter selects the text for editing and enables the Left and Right Arrow keys to move the cursor. Press Enter again to quit the edit mode.
Print Screen, Backspace	Toggles back to the previous selection.
Print Screen, Alt+0 (zero)	Immediately disengages the user from a target device; no target device is selected. Status flag displays <i>Free</i> . (This only applies to the 0 (zero) on the keyboard and not the numeric keypad.)
Print Screen, Pause	Immediately turns on Screen Saver mode and prevents access to that specific console if it is password protected.
Up/Down Arrows	Moves the cursor from line to line in lists.
Right/Left Arrows	Moves the cursor between columns. When editing a text box, these keys move the cursor within the column.
Page Up/Page Down	Pages up and down through Name and Port lists and Help pages.
Home/End	Moves the cursor to the top or bottom of a list.
Backspace	Erases characters in a text box.

Table 3.2: OSCAR Interface Navigation Basics (Continued)

Keystroke	Action Performed
Delete	Deletes the current selection in the Scan list or characters in a text box.
Shift-Del	Deletes from the current selection to the end of the list when editing a Scan list.
Numbers	Type from the keyboard or keypad.
Caps Lock	Disabled. Use the Shift key to change case.
Backspace	Erases characters in a text box.

Configuring OSCAR Interface Menus

You can configure your DSR1021/1022 switching system from the Setup dialog box within the OSCAR interface. Select the *Names* button when initially setting up your DSR1021/1022 switching system to identify target devices by unique names. Select the other setup features to manage routine tasks for your target devices from the OSCAR interface menu.

Table 3.3: Setup Features to Configure the OSCAR Interface

Feature	Purpose
Menu	Change the Main dialog box list sorting option by toggling between numerically by port or EID number and alphabetically by name.
	Change the Screen Delay Time before the OSCAR interface displays after pressing Print Screen .
Flag	Change display, timing, color or location of the status flag.
Broadcast	Simultaneously send mouse movements and keystrokes to multiple target devices.
Scan	Set up a custom Scan pattern for up to eight (1021) or four (1022) target devices.
Screen Saver	Set passwords to protect or restrict access.
	Enable the screen saver.
Keyboard	Set the keyboard country code to send to Sun servers.
Devices	Identify the appropriate number of ports on an attached cascade switch.
Names	Identify target devices by unique names.

To access the OSCAR interface Setup dialog box:

1. Press **Print Screen** to open the OSCAR interface. The Main dialog box appears. See Figure 3.1 on page 21 for an illustration of the Main dialog box populated with sample data.
2. Click *Setup* to open the Setup dialog box as shown in Figure 3.2.



Figure 3.2: Setup Dialog Box

Assigning target device names

Use the Names dialog box to identify target devices by name rather than by port number. The Names list is always sorted by port order. You can toggle between displaying the name or the EID number of each DSRIQ module, so even if you move the target device to another port, the name and configuration will be recognized by the switch.

NOTE: If a target device is turned off, its respective DSRIQ module will not appear in the Names list.

To access the OSCAR interface Names dialog box:

1. If the OSCAR interface is not open, press **Print Screen**. The Main dialog box appears. See Figure 3.1 on page 21 for an illustration of the Main dialog box populated with sample data..

- Click *Setup - Names* to open the Names dialog box. Figure 3.3 shows the Names dialog box populated with sample data.

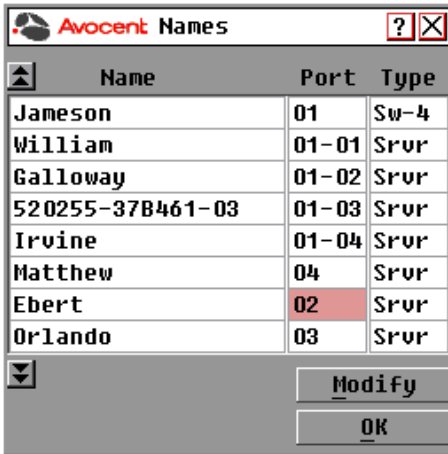


Figure 3.3: Names Dialog Box

NOTE: If new DSRIQ modules are discovered by the DSR1021/1022 switch, the on-screen list will be automatically updated. The mouse cursor will change into an hourglass during the update. No mouse or keyboard input will be accepted until the list update is complete.

To assign names to target devices:

- In the Names dialog box, select a target device name or port number and click *Modify*. The Name Modify dialog box appears. Figure 3.4 shows the Name Modify dialog box populated with sample data.



Figure 3.4: Name Modify Dialog Box

2. Type a name in the New Name text field. Names of target devices may be up to 15 characters long. Legal characters include A-Z, a-z, 0-9, space and hyphen.
 3. Click *OK* to transfer the new name to the Names dialog box. Your selection is not saved until you click *OK* in the Names dialog box.
 4. Repeat steps 1-3 for each target device in the system.
 5. Click *OK* in the Names dialog box to save your changes.
- or-
- Click *X* or press **Escape** to exit the dialog box without saving changes.

NOTE: If a DSRIQ module has not been assigned a name, the EID is used as the default name.

To list target devices alphabetically by name:

Press **Alt+N** or click *Name* in the Main dialog box.

Assigning device types

While the DSR1021/1022 switch automatically discovers attached cascade switches, you need to specify the number of ports on the cascade switch through the Devices dialog box. The Devices dialog box lists Sw-4, Sw-6, Sw-8, Sw-16 or Sw-24 in the Type category for the cascade switch.

To access the OSCAR interface Devices dialog box:

1. If the OSCAR interface is not open, press **Print Screen** to open the Main dialog box.
2. Click *Setup - Devices* to open the Devices dialog box. See Figure 3.5 for an example.
3. Select the desired cascade switch from the Type list. The Modify button appears.
4. Click *Modify* to assign the appropriate number of ports to the switch.

NOTE: The Modify button is available only if a configurable switch is selected.

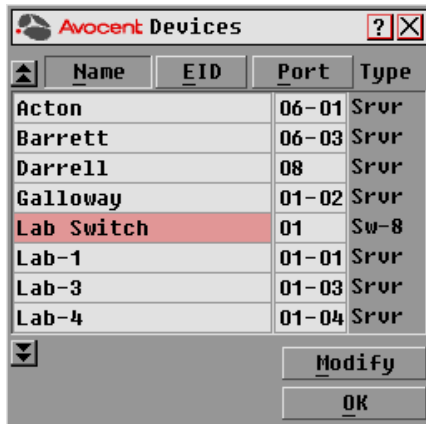


Figure 3.5: Devices Dialog Box

When the DSR1021/1022 switch discovers a cascade switch, the numbering format changes from a DSR port only to [DSR port]-[switch port] to accommodate each target device under that switch. For example, if a switch is connected to DSR port 6, each target device connected to it would be numbered sequentially. The target device using DSR port 6, switch port 1 would be 06-01. The target device using DSR port 6, switch port 2 would be 06-02 and so on.

To assign a device type:

1. In the Devices dialog box, select the desired port number.
2. Click *Modify* to open the Device Modify dialog box as shown in Figure 3.6.

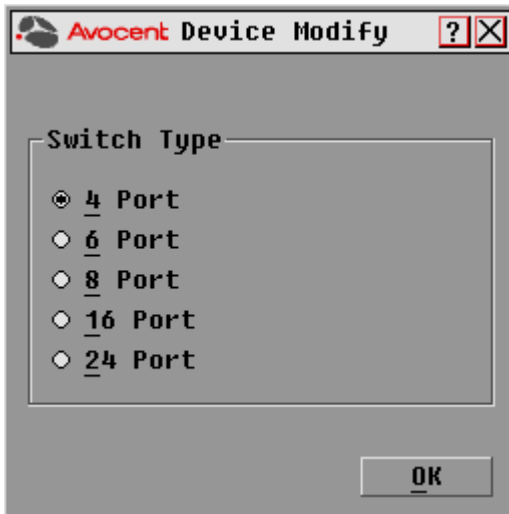


Figure 3.6: Device Modify Dialog Box

3. Choose the number of ports supported by your switch and click *OK*.
4. Repeat steps 1-3 for each port requiring a device type to be assigned.
5. Click *OK* in the Devices dialog box to save settings.

NOTE: Changes made in the Device Modify dialog box are not saved until you click *OK* in the Devices dialog box.

Changing the display behavior

Use the Menu dialog box to change the display order of target devices and to set a Screen Delay Time for the OSCAR interface. The display order setting alters how target devices display in several dialog boxes, including Main, Devices and Broadcast.

To access the OSCAR interface Menu dialog box:

1. Press **Print Screen** to launch the OSCAR interface. The Main dialog box appears. See Figure 3.1 on page 21 for an illustration of the Main dialog box populated with sample data.
2. Click *Setup - Menu* in the Main dialog box to open the Menu dialog box as shown in Figure 3.7.

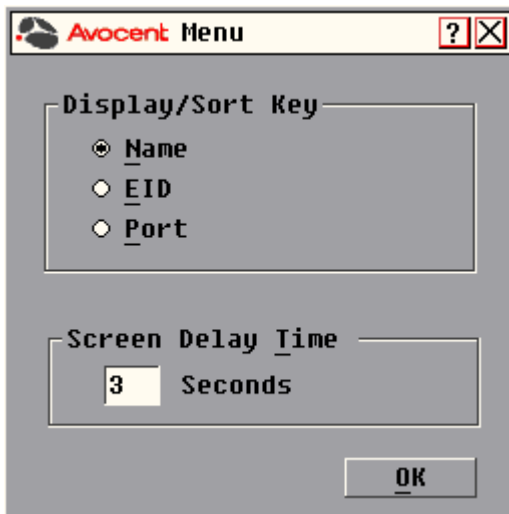


Figure 3.7: Menu Dialog Box

To choose the display order of target devices:

1. Select *Name* to display target devices alphabetically by name.
-or-
Select *EID* to display target devices numerically by EID number.
-or-
Select *Port* to display target devices numerically by port number.
2. Click *OK* to save setting.

Depending on the display method selected, the corresponding button will be depressed in the Main dialog box.

To set a Screen Delay Time for the OSCAR interface:


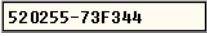


1. Type in the number of seconds (0-9) to delay the OSCAR display after you press **Print Screen**. Entering **0** will instantly open the OSCAR interface with no delay.
2. Click *OK* to save setting.

Setting a Screen Delay Time allows you to complete a soft switch without the OSCAR interface displaying. To perform a soft switch, see the *Soft switching* section on page 23.

Controlling the status flag

The status flag displays on the desktop and shows the name or EID number of the selected target device or the status of the selected port. Use the Flag dialog box to configure the flag to display by target device name or EID number, or to change the flag color, opacity, display time and location on the desktop. Table 3.4 describes each flag status and gives an example for each one.

Table 3.4: OSCAR Interface Status Flags

Flag	Description
	Flag type by name
	Flag type by EID number
	Flag indicating that the user has been disconnected from all systems
	Flag indicating that Broadcast mode is enabled

To access the OSCAR interface Flag dialog box:

1. If the OSCAR interface is not open, press **Print Screen**. The Main dialog box will appear. See Figure 3.1 on page 21 for an illustration of the Main dialog box populated with sample data.
2. Click *Setup - Flag* to open the Flag dialog box as shown in Figure 3.8 on page 32.



Figure 3.8: Flag Dialog Box

To determine how the status flag is displayed:

1. In the Flag Type section of the Flag dialog box, select *Name* or *EID* to determine what information to display.
2. Select *Displayed* to show the flag all the time.
-or-
Select *Timed* to display the flag for only five seconds after switching.
3. In the Display Color section, select one of the following flag colors:
 - *Flag 1* - Grey flag with black text
 - *Flag 2* - White flag with red text
 - *Flag 3* - White flag with blue text
 - *Flag 4* - White flag with violet text
4. In the Display Mode section, select *Opaque* for a solid color flag or select *Transparent* to see the desktop through the flag.
5. To position the status flag on the desktop:
 - a. In the Flag dialog box, click *Set Position* to gain access to the Position Flag window, as shown in Figure 3.9.



Figure 3.9: Position Flag

- b. Left-click on the title bar and drag to the desired location.
- c. Right-click to return to the Flag dialog box.

NOTE: Changes made to the flag position are not saved until you click *OK* in the Flag dialog box.

6. Click *OK* to save settings.
-or-
Click *X* to exit without saving changes.

Broadcasting to target devices

The local user can simultaneously control multiple target devices in a system to ensure that all selected target devices receive identical input. You can choose to broadcast keystrokes and mouse movements independently.

NOTE: You can broadcast to as many as eight target devices at a time, one target device per port.

To access the OSCAR interface Broadcast dialog box:

1. If the OSCAR interface is not open, press **Print Screen** to open the Main dialog box. See Figure 3.1 on page 21 for an illustration of the Main dialog box populated with sample data.
2. Click *Setup - Broadcast* to open the Broadcast dialog box. Figure 3.10 shows the Broadcast dialog box populated with sample data.

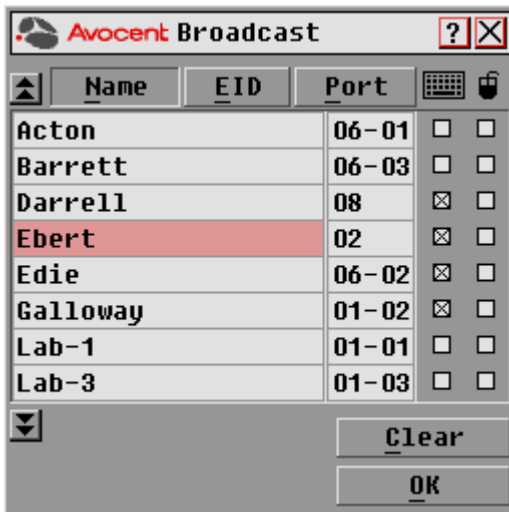


Figure 3.10: Broadcast Dialog Box

NOTE: Broadcasting Keystrokes - The keyboard state must be identical for all target devices receiving a broadcast to interpret keystrokes identically. Specifically, the **Caps Lock** and **Num Lock** modes must be the same on all keyboards. While the switch attempts to send keystrokes to the selected target devices simultaneously, some target devices may inhibit and thereby delay the transmission.

Broadcasting Mouse Movements - For the mouse to work accurately, all systems must have identical mouse drivers, desktops (such as identically placed icons) and video resolutions. In addition, the mouse must be in exactly the same place on all screens. Because these conditions are extremely difficult to achieve, broadcasting mouse movements to multiple systems may have unpredictable results.

To broadcast to selected target devices:

1. From the Broadcast dialog box, select the mouse and/or keyboard checkboxes for the target devices that are to receive the Broadcast commands.

-or-

Press the **Up** or **Down Arrow** keys to move the cursor to the target device. Then press **Alt+K** to select the keyboard checkbox or **Alt+M** to select the mouse checkbox. Repeat for additional target devices.

2. Click *OK* to save the settings and return to the Setup dialog box. Click *X* or press **Escape** to return to the Main dialog box.
3. Click *Commands* to open the Commands dialog box.
4. Click the *Broadcast Enable* checkbox to activate Broadcasting.
5. From the user station, type the information and perform the mouse movements you wish to broadcast.

To turn off Broadcasting:

From the Commands dialog box, clear the *Broadcast Enable* checkbox.

Using Scan mode

In Scan mode, the DSR1021/1022 switch automatically scans from port to port (target device to target device). You can scan up to eight target devices, specifying which ones to scan and the number of seconds that each will display. The scanning order is determined by placement of the target device in the list. The list always displays in scanning order. You can, however, choose to display the target device's name or EID number by pressing the appropriate button.

NOTE: Scanning is only available to the local user.

To add target devices to the Scan list:

1. If the OSCAR interface is not open, press **Print Screen** to open the Main dialog box will appear. See Figure 3.1 on page 21 for an illustration of the Main dialog box populated with sample data.
2. Click *Setup - Scan* to open the Scan dialog box. Figure 3.11 shows the Scan dialog box populated with sample data.

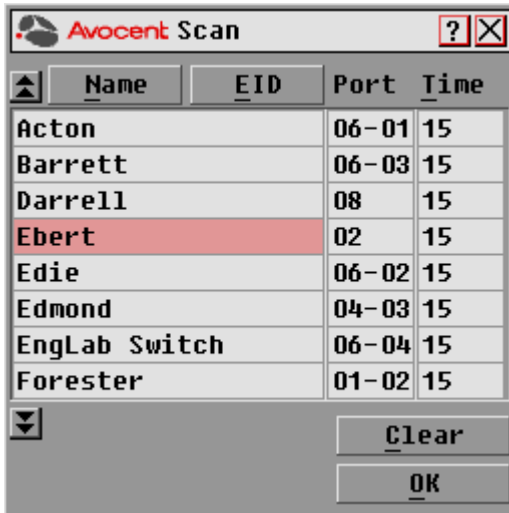


Figure 3.11: Scan Dialog Box

3. Determine the order within the list to add the target device. If there are no target devices in the Scan list, the cursor will appear in a blank line at the top of the list.
 - or-
 - To add a target device to the end of the list, place the cursor in the last target device entry and press the **Down Arrow** key.
 - or-
 - To add a target device within an existing list, place the cursor in the line below where you want to insert a new target device and press **Insert**.
4. Type the first few characters of a target device name or port number to scan. The first matching target device will appear in the line.
 - or-
 - Press the following keyboard commands in the Name, Port or Time column to move through the list of target devices available to scan.

- a. Press **Alt+Down Arrow** to move the cursor down through the list of target devices.
 - b. Press **Alt+Up Arrow** to move the cursor up through the list of target devices.
 - c. Press **Alt+Home** to move the cursor to the first target device in the list.
 - d. Press **Alt+End** to move the cursor to the last target device in the list.
5. In the Time column, type the number of seconds (from 3-255) of desired time before the scan moves to the next target device in the sequence.
 6. Move the cursor to the next line or press **Down Arrow** and repeat steps 2-5 for each of the remaining target devices to be included in the scan pattern.
 7. Click *OK* to save settings.

To remove a target device from the Scan list:

1. In the Scan dialog box, click the target device to be removed.
2. Press **Delete**.
-or-
Press **Shift+Delete** to remove the selected target device and all entries below it.
3. Click *OK* to save settings.

To start the Scan mode:

1. If the OSCAR interface is not open, press **Print Screen** to open the Main dialog box. See Figure 3.1 on page 21 for an illustration of the Main dialog box populated with sample data.
2. Click *Commands* to open the Commands dialog box as shown in Figure 3.12.

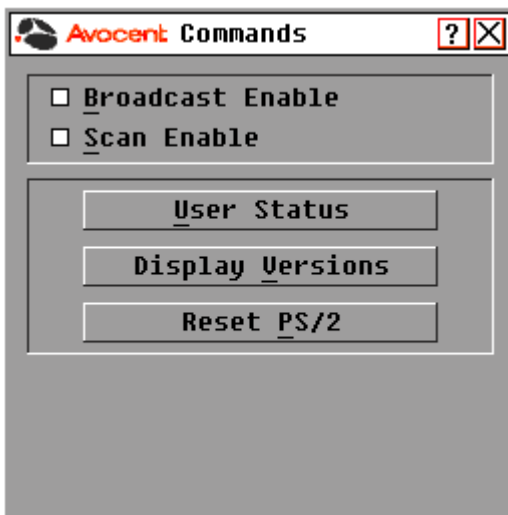


Figure 3.12: Commands Dialog Box

3. Select *Scan Enable* in the Commands dialog box.
4. Click *X* to close the Commands dialog box.

NOTE: Scanning will begin as soon as the Scan Enable button is selected.

To cancel Scan mode:

If the OSCAR interface is open, select a target device.

-or-

If the OSCAR interface is not open, move the mouse or press any key on the keyboard. Scanning will stop at the currently selected target device.

-or-

If the OSCAR interface is not open, press **Print Screen** to open the Main dialog box. (See Figure 3.1 on page 21 for an illustration of the Main dialog box populated with sample data.) Then perform the following actions:

- a. Click *Commands* to open the Commands dialog box. See Figure 3.12 on page 36 to see the Commands dialog box.
- b. Clear the *Scan Enable* checkbox.

Setting local port Screen Saver options

Use the Screen Saver dialog box to manage the screen saver inactivity time and to test the Screen Saver mode on the local port. If security has been enabled in the DSView 3 software, after the specified Inactivity Time elapses, the local port locks and remains locked until you press any key or move the mouse. You will then need to log in to continue.

To access the OSCAR interface Screen Saver dialog box:

1. If the OSCAR interface is not open, press **Print Screen** to open the Main dialog box. See Figure 3.1 on page 21 for an illustration of the Main dialog box populated with sample data.
2. Click *Setup - Screen Saver* to open the Screen Saver dialog box as shown in Figure 3.13 on page 38.



Figure 3.13: Screen Saver Dialog Box

To set the Screen Saver options:

NOTE: The Screen Saver password is set within the DSView 3 software. For more information, see the *DSView Installer/User Guide*.

1. Type the number of minutes for Inactivity Time (1-99) to delay activation of the password protection and screen saver features.
2. For Mode, select *Energy* if your monitor is ENERGY STAR® compliant; otherwise, select *Screen*.



CAUTION: Monitor damage can result from the use of Energy mode with monitors not compliant with ENERGY STAR®.

3. (Optional) Click *Test* to activate the screen saver test which lasts 10 seconds and then returns to the Security dialog box.
4. Click *OK* to save settings.

To exit Screen Saver mode and log in to the local port:

1. Press any key or move the mouse.
2. If Screen Saver security was turned on in the DSView 3 software, a login screen appears. Enter your username and password and then click *OK*. If you do not know your username and password, see the DSView 3 software administrator.
3. The Main dialog box appears and any previous target device connection is restored.

To immediately turn on the screen saver:

Press **Print Screen**, then press **Pause**. This command works only when the user is connected to a target device.

Setting the keyboard country code

NOTE: Using a keyboard code that supports a language different from that of your DSR1021/1022 switch firmware will cause incorrect keyboard mapping.

Sun servers can use keyboard mappings for non-US keyboards. By default, the DSR1021/1022 switch sends the US keyboard country code to Sun and USB modules attached to target devices, and the code is applied to the target devices when they are powered on or rebooted. Codes are then stored in the DSRIQ module.

Issues may arise when you use the US keyboard country code with a keyboard of another country. For example, the **Z** key on a US keyboard is in the same location as the **Y** key on a German keyboard. Sun servers will interpret pressing the **Y** key on a German keyboard as pressing the **Z** key when the US keyboard country code is used.

The Keyboard dialog box enables you to send a different keyboard country code than the default US setting. The specified country code is sent to all target devices attached to the DSR1021/1022 switches when they are powered on or rebooted and the new code is stored in the DSRIQ module.

NOTE: If you move a DSRIQ module to a different target device, you must reset the keyboard country code.

See *Appendix F* on page 88 for information on emulating certain Sun keys using a PS/2 keyboard and special considerations for Japanese and Korean Sun USB keyboards.

NOTE: Only local users can view or change keyboard country code settings.

To set the keyboard country code for Sun servers:

1. If the OSCAR interface is not open, press **Print Screen** to open the Main dialog box. See Figure 3.1 on page 21 for an illustration of the Main dialog box populated with sample data.
2. Click *Setup - Keyboard*. The Keyboard dialog box appears.



Figure 3.14: Keyboard Dialog Box

3. Select a country code and click *OK*.
4. Reboot the Sun servers. After rebooting, each Sun server will request the country code setting stored in the DSRIQ module.

NOTE: If you wish to reboot the target devices by power-cycling them, you must wait 90 seconds before rebooting. However, you can perform a soft reboot without waiting 90 seconds.

Managing Server Tasks Using the OSCAR Interface

From the OSCAR interface Commands dialog box, you can manage your DSR1021/1022 switching system and user connections, enable the Scan and Broadcast modes and update your firmware. Table 3.5 lists commands you can use to manage routine tasks for your target devices..

Table 3.5: Commands to Manage Routine Tasks for Target Devices

Feature	Purpose
Broadcast Enable	Begin broadcasting to target devices. Configure a target device list for broadcasting under the Setup dialog box.
Scan Enable	Begin scanning target devices. Set up a target device list for scanning in the Setup dialog box.
User Status	View and disconnect users.
Display Versions	View version information for the DSR1021/1022 switch. Also view and upgrade firmware for individual DSRIQ modules.
Reset PS/2	Re-establish operation of PS/2 keyboard and mouse.

To access the OSCAR interface Commands dialog box:

1. Press **Print Screen** to launch the OSCAR interface. The Main dialog box appears. See Figure 3.1 on page 21 for an illustration of the Main dialog box populated with sample data.
2. Click *Commands* to open the Commands dialog box as shown in Figure 3.15.



Figure 3.15: Commands Dialog Box

Viewing and disconnecting user connections

You can view and disconnect users through the User Status dialog box. The username (U) is always displayed; however, you can display either the target device name or EID number to which a user is connected. If no user is currently connected to a channel, the user field is blank and the Server Name field displays *Free*.

To view current user connections:

1. If the OSCAR interface is not open, press **Print Screen**. The Main dialog box will appear. See Figure 3.1 on page 21 for an illustration of the Main dialog box populated with sample data.
2. Click *Commands - User Status* to open the User Status dialog box. Figure 3.16 illustrates the User Status dialog box populated with sample data.

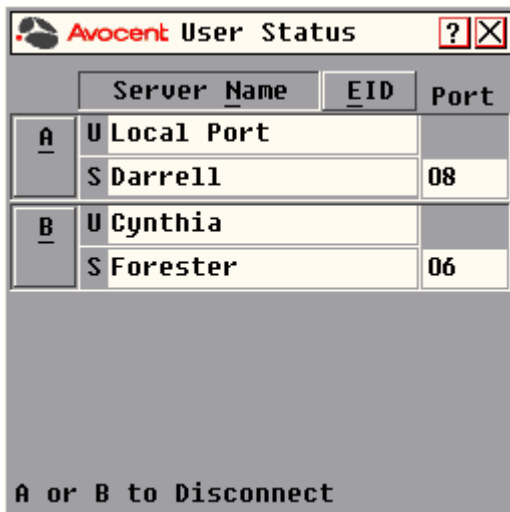


Figure 3.16: User Status Dialog Box

To disconnect a user:

1. If the OSCAR interface is not open, press **Print Screen**. The Main dialog box appears. See Figure 3.1 on page 21 for an illustration of the Main dialog box populated with sample data.
2. Click *Commands - User Status* to open the User Status dialog box as shown in Figure 3.16.
3. Click the letter corresponding to the user to disconnect. The Disconnect dialog box appears as shown in Figure 3.17 on page 43.



Figure 3.17: Disconnect Dialog Box

4. Click *OK* to disconnect the user and return to the User Status dialog box.
-or-
Click *X* or press **Escape** to exit the dialog box without disconnecting a user.

NOTE: If the User Status list has changed since it was last displayed, the mouse cursor will turn into an hourglass as the list is automatically updated. No mouse or keyboard input will be accepted until the list update is complete.

Resetting your PS/2 keyboard and mouse

NOTE: This function is for Microsoft Windows-based computers only. Resetting the PS/2 on a target device running any other operating system may require that you reboot that target device.

If the PS/2 keyboard or mouse locks up, you may be able to re-establish operation of these peripherals by issuing a Reset command. The Reset command sends a hot-plug sequence to the target device which causes the mouse and keyboard settings to be sent to the DSR1021/1022 switch. With communication re-established between the target device and the DSR1021/1022 switch, functionality is restored to the user.

To reset the PS/2 mouse and keyboard values:

1. If the OSCAR interface is not open, press **Print Screen**. The Main dialog box appears. See Figure 3.1 on page 21 for an illustration of the Main dialog box populated with sample data.
2. Click *Commands - Reset PS/2* to display a message box requesting that you confirm the reset.
3. Click *OK*.

- a. A message appears indicating that the mouse and keyboard have been reset.
- b. Click *X* to close the message box.
-or-
Click *X* or press **Escape** to exit without sending a Reset command to the PS/2 mouse and keyboard.

Displaying version information

The OSCAR interface enables you to display the version number of the switch firmware and any auxiliary devices connected to the switch. This information facilitates system troubleshooting and support. For optimum performance, keep your firmware current.

To display version information:

1. If the OSCAR interface is not open, press **Print Screen**. The Main dialog box will appear.
2. Click *Commands - Display Versions*. The Version dialog box appears. The top half of the box lists the subsystem versions in the DSR1021/1022 switch.

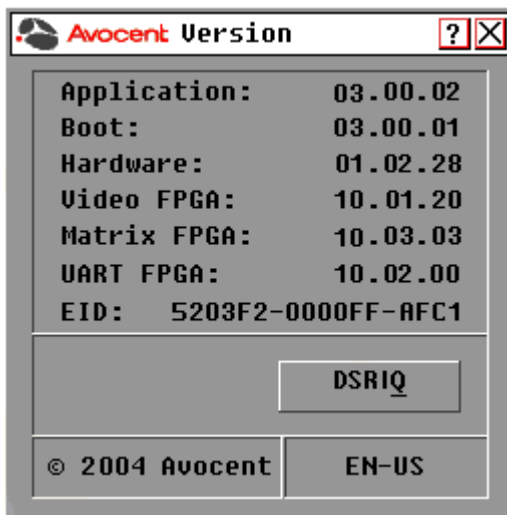


Figure 3.18: Version Dialog Box

3. Click *DSRIQ* to view individual DSRIQ module version information. The DSRIQ Selection dialog box appears.

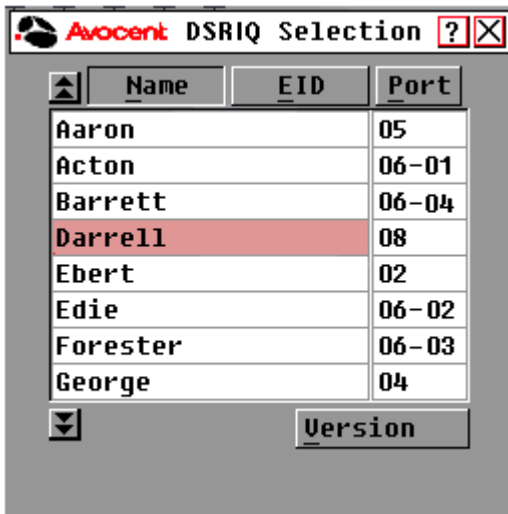


Figure 3.19: DSRIQ Selection Dialog Box

4. Select a DSRIQ module to view and click the *Version* button. The DSRIQ Version dialog box appears. For more information on loading firmware, see *Appendix A* on page 77.



Figure 3.20: DSRIQ Version Dialog Box

5. Click *X* to close the DSRIQ Version dialog box.

Web Server Operations

Overview of the DSR1021/1022 Web Server

In addition to the OSCAR on-screen interface, the DSR1021/1022 switch provides a built in web server to handle all basic KVM switching needs. For enhanced functionality and control of multiple devices, users can upgrade to the DSView 3 software package. The DSR web server provides secure “point-and-click” web browser-based access to control any device attached to your DSR1021/1022 switch.

The DSR web server supports the following browsers:

- Microsoft® Internet Explorer version 6.0 SP1 and later
- Mozilla version 1.7.3 and later
- Firefox version 1.0 and later
- Netscape version 7.2 and later

Avocent recommends that the browser be kept up to date with the latest version.

A Video Viewer window allows you to control the keyboard, monitor and mouse functions of individual target devices connected to the DSR1021/1022 switch in real time. You may also use predefined global macros to perform actions within the Video Viewer window. For instructions on how to use the Video Viewer, see Chapter 5. Once the switch has been installed and configured as described in Chapter 2 and you have set the IP address, you are ready to begin daily operation.

Viewing and Selecting Ports and Servers

Before you can begin a KVM session, you must first login to the DSR web server.

To log in to the DSR web server:

1. Launch a web browser.
2. In the address field of the browser, enter the IP address that you assigned to your DSR1021/1022 switch. Use `https://xxx.xx.xx.xx` as the format.
3. When the browser makes contact with the switch, enter your username and password, then click *Login*. The DSR Explorer Window will appear.

NOTE: The default username is Admin with no password.

About the DSR Explorer Window

When a user has been logged in and authenticated, the Avocent DSR Explorer window appears. From the DSR Explorer window, users may view, access and manage their DSR1021/1022 switch. The window may also be used to specify system settings and change profile settings.

Figure 4.1 shows the DSView Explorer window areas for the DSR1021/1022 switches.

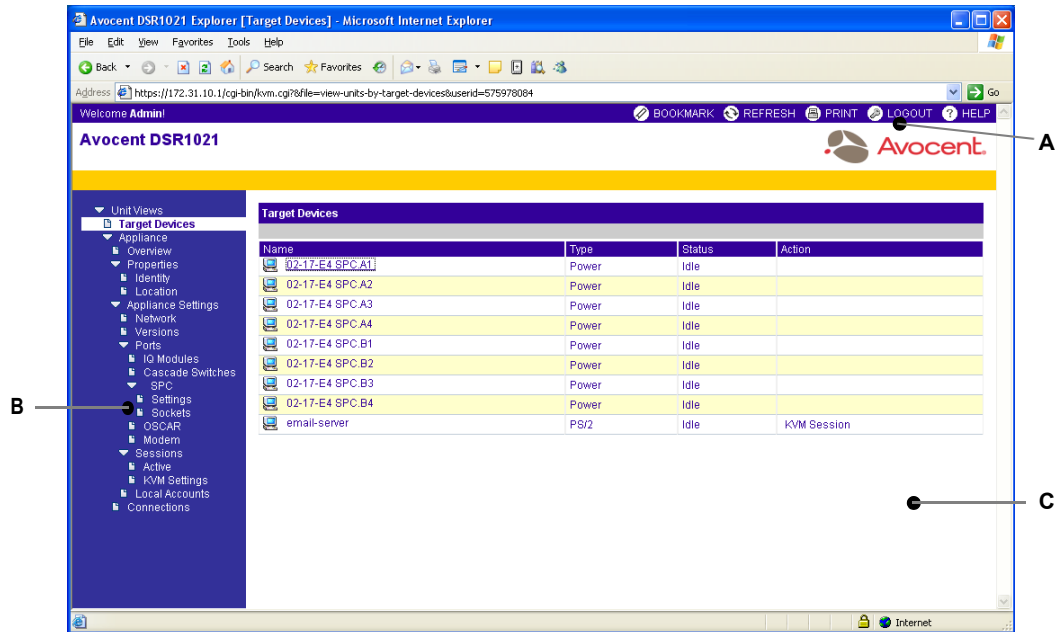


Figure 4.1: Avocent DSR Explorer Window

Table 4.1 describes some of the DSR Explorer window areas.

Table 4.1: DSR Explorer Window Area Descriptions

Letter	Description
A	Top option bar - Use the top option bar to bookmark a DSR web server window, refresh the display of a DSR web server window, print a web page, log out of a software session or access the Avocent Technical Support help page. The name of the logged in user appears on the left side of the top option bar.
B	Side navigation bar - Use the side navigation bar to display the system information you wish to display or edit, which displays in the content area. The side navigation bar also contains icons in the top left corner which, when clicked, expand or collapse all nodes.
C	Content area - Use the content area to display or make changes to the DSR web server system.

Using the side navigation bar

You can use the side navigation bar to display windows in which you can specify settings or perform operations. Figure 4.2 shows the side navigation bar of the DSR1021 Explorer window.

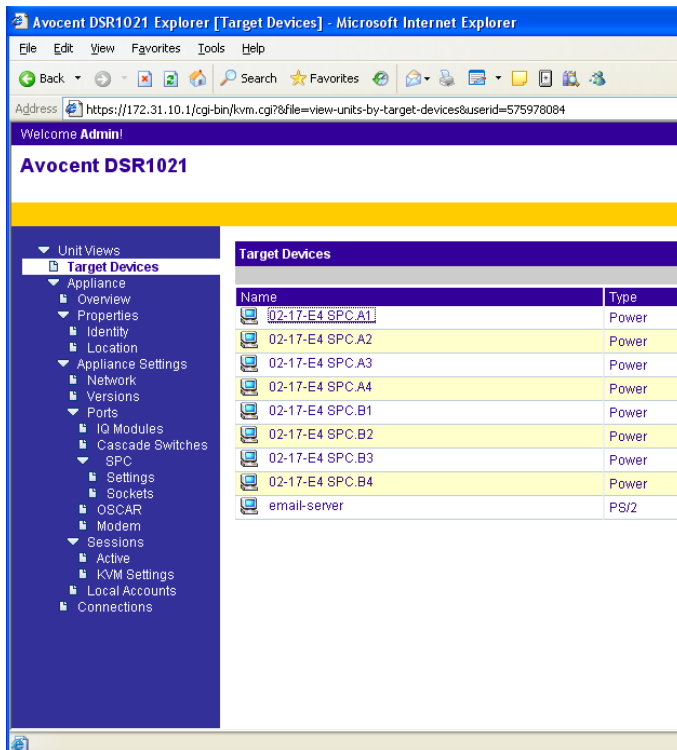


Figure 4.2: Side Navigation Bar

Clicking on a link that does not contain an arrow will display its corresponding window.

Using the top option bar

Bookmarking a window (Internet Explorer only)

The DSR Explorer window contains a bookmark icon and text in the top option bar. Bookmarking a window will add a link to the window in the Favorites drop-down menu. You may select the link at any time to quickly access the bookmarked window.

If you bookmark a window and information related to the window changes, this new information will appear in the window when you next display the bookmarked window.

If you click *BOOKMARK* or the bookmark icon after the DSR web server session has timed out, the User Login window will open and you must log in again.

To bookmark a window:

1. In the top option bar, click *BOOKMARK* or the bookmark icon. The Add Favorite dialog box will appear.
2. If you wish, type a name for the window. You may also click the *Create in* button to create or specify a folder in which to place the window.
3. Click *OK* to close the Add Favorite dialog box.

Printing a window

All DSR web server windows contain a print icon in the top option bar.

To print a DSR web server window:

1. In the top option bar, click *PRINT* or the print icon. The Print dialog box will appear.
2. Specify the options you wish to use for printing the DSR web server window.
3. Click *Print* to print the DSR web server window and close the Print dialog box.

Refreshing a window

A DSR Explorer window may be refreshed at any time by clicking *REFRESH* or the refresh icon in the top option bar.

Logging Out

A user may log out at any time by clicking the logout icon in the top option bar.

Launching a KVM session**To launch a KVM session from the DSR Explorer:**

1. From the DSR Explorer, select *Target Devices* in the side navigation bar. A list of available devices will appear.
2. Click the *KVM session* link to the right of the target device that you wish to access. The Video Viewer will launch. For more information on the Video Viewer, see Chapter 5.

If the target device is currently in use, users attempting access will be given an opportunity to force a connection to the device if their preemption level is equal to or higher than the current user's.

Users may also launch KVM sessions from the Unit Overview window.

To delete offline IQ modules:

1. If you wish to only list servers that are available and powered, click *Appliance - Appliance Settings - Ports - IQ modules* to activate the Appliance IQ modules window.
2. Click the *Delete Offline* button.

To disconnect an active KVM session (Administrator only):

1. Click *Appliance - Appliance Settings - Sessions - Active* to display a list of active KVM sessions.
2. Select the checkbox to the left of the session you wish to disconnect and click the *Disconnect* button.

Managing a DSR web server device

While not as powerful as the DSView 3 software, the DSR web server provides several configuration options to tailor the DSR1021/1022 switch to your specific application.

Upgrading DSRIQ modules

The DSRIQ Flash upgrade feature allows you to update DSRIQ modules with the latest firmware available. This update can be performed using the DSR web server, DSView 3 software or the OSCAR interface.

After the Flash memory is reprogrammed with the upgrade, the DSR1021/1022 switch performs a soft reset, which terminates all DSRIQ module sessions. A target device experiencing a DSRIQ module firmware update may not display, or may display as disconnected. The target device will appear normally when the Flash update is completed.

NOTE: Check www.avocent.com for firmware upgrade files.

NOTE: DSRIQ modules are automatically updated when the DSR1021/1022 switch is updated. To update your DSR1021/1022 switch firmware, see Appendix A on page 77 or the DSView 3 Online Help.

DSRIQ modules may also be force upgraded should the need arise.

To force upgrade the DSRIQ module firmware using the DSR web server:

1. From the side navigation bar, select *Appliance - Appliance Settings - Ports - IQ modules*.
2. Select the IQ modules that you wish to upgrade and click the *Upgrade* button.

NOTE: During a firmware upgrade, the DSRIQ module status indicator in the OSCAR® interface Main dialog box will be yellow.



CAUTION: Disconnecting a DSRIQ module during a firmware update or cycling power to the target device will render the module inoperable and require the DSRIQ module to be returned to the factory for repair.

Rebooting the appliance

Periodically, such as after an upgrade, you may need to reboot the DSR1021/1022 switch.

To reboot the DSR1021/1022 switch remotely:

1. From the side navigation bar, select *Appliance - Overview*.
2. When the appliance overview window appears, click *Reboot Appliance*.

Managing Local Accounts

The DSR web server provides local and login security through Administrator-defined user accounts. By selecting *Local Accounts* on the side menu bar, Administrators may add and delete users, define user preemption and access levels and change passwords.

User access levels

Accounts have two access levels: user and Administrator. Most switch management tasks can only be performed by persons with Administrator level access.

Preemption levels

The preemption level of users determine whether they may disconnect another user's serial or video (KVM) session with a target device.

DSR web server Administrators may specify the preemption level for user accounts when an account is created. The preemption level may be changed later.

Preemption levels range from 1-4, with 4 being the highest level. For example, a user with a preemption level of 4 may preempt other level 4 users, as well as those with a level 1, 2 or 3 setting.

To change the default preemption level: (Administrator only)

1. Click *Appliance - Appliance Settings - Ports - OSCAR*.
2. Use the drop-down menu to select the new level and click the *Save* button.

To add a new user account (Administrator only):

1. On the side menu bar, select *Local Accounts*. The current user list will be displayed.
2. Click the *Add* button.
3. Enter the name and password of the new user in the blanks provided.
4. Select the preemption and access levels for the new user.
5. Click the *Save* button to complete the process.

To delete a user account (Administrator only):

1. On the side menu bar, select *Local Accounts*. The current user list will be displayed.
2. Click the box to the left of each account that you wish to delete, then click the delete button.

To edit a user account (Administrator or active user only):

1. On the side menu bar, select local accounts. The current user list will be displayed.
2. Click the name of the user you wish to edit. A user profile will appear.
3. Edit the user account as needed, then click *Save*.

To disable local security (Administrator only):

1. Click *Appliance - Appliance Settings - Ports - OSCAR*.
2. Click the *Disable OSCAR authentication* checkbox and click *Save*.

Managing Device Properties

Viewing and changing appliance configuration information

The DSR1021/1022 switch reports most device properties directly through the DSR web browser.

NOTE: Users can view all appliance information, but only Administrators can change settings.

Table 4.2: Viewing Appliance Information

To do this:	Select this:
Display the unit's name or type	<i>Appliance - Overview</i>
Display a list of available target devices, their type and status	<i>Target Devices</i>
Enter, change or display the unit's network address, gateway address, subnet mask, MAC address, LAN speed, DHCP enable status or ICMP ping reply status	<i>Appliance - Appliance Settings - Network</i>
Display the unit's current firmware revision for application, boot, OSCAR interface FPGA and Video FPGA	<i>Appliance - Appliance Settings - Versions</i>
Display a list of attached IQ modules and their status	<i>Appliance - Appliance Settings - Ports - IQ modules</i>
Display a list of attached cascade switches	<i>Appliance - Appliance Settings - Ports - Cascade Switches</i>
Display a list of active KVM sessions and their duration	<i>Appliance - Appliance Settings - Sessions - Active</i>
Display a list of devices attached to the DSR1021/1022 switch	<i>Appliance - Appliance Settings - Sessions - Active</i>
Display a list of devices attached to the DSR1021/1022 switch	<i>Appliance - Connections</i>
View the unit's part number, serial number and EID number	<i>Appliance - Properties - Identity</i>
Enter or display the unit's Site, Department and Location	<i>Appliance - Properties - Location</i>
Enable the inactivity timeout	<i>Appliance - Appliance Settings - Sessions - KVM settings. Then, click the Enable Inactivity timeout box</i>
Change the unit encryption level	<i>Appliance - Appliance Settings - Sessions - KVM settings - Then select the level of encryption desired for keyboard/ mouse signals and then video signals</i>
Change the modem time-out settings	<i>Appliance - Appliance Settings - Ports - Modem</i>

Power Controlling Target Devices

NOTE: You must have Administrator privileges to change SPC power control device settings.

If a target device is connected to an SPC power control device outlet, you may power up, power down or cycle (power target device down and then up) the target device using the DSR web server.

To power up a target device:

1. Select *Appliance - Appliance Settings - Ports - SPC - Sockets* from the DSR Explorer. The SPC sockets window will appear.
2. Select the checkbox to the left of the device that you wish to power.
3. Click the *On* button.

To power down a target device:

1. Select *Appliance - Appliance Settings - Ports - SPC - Sockets* from the DSR Explorer. The SPC sockets window will appear.
2. Select the checkbox to the left of the device that you wish to power down.
3. Click the *Off* button.

To power cycle a target device:

1. Select *Appliance - Appliance Settings - Ports - SPC - Sockets* from the DSR Explorer. The SPC sockets window will appear.
2. Select the checkbox to the left of the device that you wish to cycle.
3. Click the *Cycle* button.

To change the minimum on time, off time or wake up state:

1. Select *Appliance - Appliance Settings - Ports - SPC - Sockets* from the DSR Explorer.
2. Click the socket name that you wish to modify.
3. Use the drop down windows to alter the desired settings.
4. Click the *Save* button to exit.

To view device details regarding the connected SPC device:

Select *Appliance - Appliance Settings - Ports - SPC - Settings* from the DSR Explorer.

The Video Viewer

About the Video Viewer Window

The Video Viewer is used to conduct a KVM session with the target devices attached to the DSR switch. When you connect to a device using the Video Viewer, the target device desktop appears in a separate window containing both the local and the target device cursor. The Video Viewer window supports either a 3- or 5-button mouse.

The DSR web server software uses a Java-based program to display the Video Viewer window.

NOTE: The DSR web server uses system memory to store and display images within Video Viewer windows. Each opened Video Viewer window requires additional system memory:

- An 8-bit color setting on the client PC requires 1.4 MB of memory per Video Viewer window.
- A 16-bit color setting requires 2.4 MB and a 32-bit color setting requires 6.8 MB.

Opening more than four simultaneous Video Viewer windows may affect system performance and is not recommended. If you attempt to open more Video Viewer windows than your system memory allows, you will receive an out-of-memory error and the requested Video Viewer window will not open.

If the device you are attempting to access is currently being viewed by another user, you will be prompted to preempt the other user if the preemption level is equal to or greater than theirs. An appliance administrator can disconnect the other user via the Active Session page. For more information, see the *To disconnect an active KVM session (Administrator only)* procedure on page 51 in Chapter 4.

Video Viewer minimum requirements

The Video Viewer requires one of the following operating systems:

- Windows 2000 Workstation or Server with Service Pack 2
- Windows Server 2003 Standard, Enterprise or Web Edition
- Window NT 4.0 Workstation or Server with Service Pack 6a
- Windows XP Home Edition or Professional
- Red Hat Enterprise Linux

The Video Viewer client requires Java version 1.4.2_04 or later when opened from Internet Explorer, Mozilla, Netscape or Firefox browsers. The DSR web server automatically downloads and installs the Video Viewer the first time it is opened.

NOTE: The DSR web server does not install the Java Resource Engine (JRE). The JRE is available from <http://www.sun.com> as a free download.

Launching a KVM Session

NOTE: When using a non-proxied connection, video performance over a slower network connection may be less than optimal. Since certain color settings (such as Grayscale) use less network bandwidth than others (such as Best Color), changing the color settings can increase video performance. For optimal video performance over a slower network connection, Avocent recommends a color setting such as Grayscale/Best Compression or Low Color/High Compression. See the *Adjusting color depth* section on page 61 for more information.

To launch a KVM session from the DSR Explorer:

1. Click on a device listed on the Target Devices screen to open the unit overview window.
2. Click the *KVM Session* link to open the Video Viewer in a new window.

Session time-out

A remote session can time-out no activity has occurred in a Session window for a specified time. The session time-out value can be configured by using the Appliance KVM Session Settings window. If you specify a new time-out value, it will be used the next time the DSR web server is accessed.

To enable, disable or configure the session time-out:

1. In the side menu, select *Unit Views - Appliance - Appliance Settings - Sessions - KVM Settings*.
2. Select the desired setting for the *Enable Activity Timeout* box.
3. If necessary, select the time limit for the inactivity timeout.

Video Viewer Window Features

Figure 5.1 shows the Video Viewer window areas, and descriptions follow in Table 5.1 on page 58.

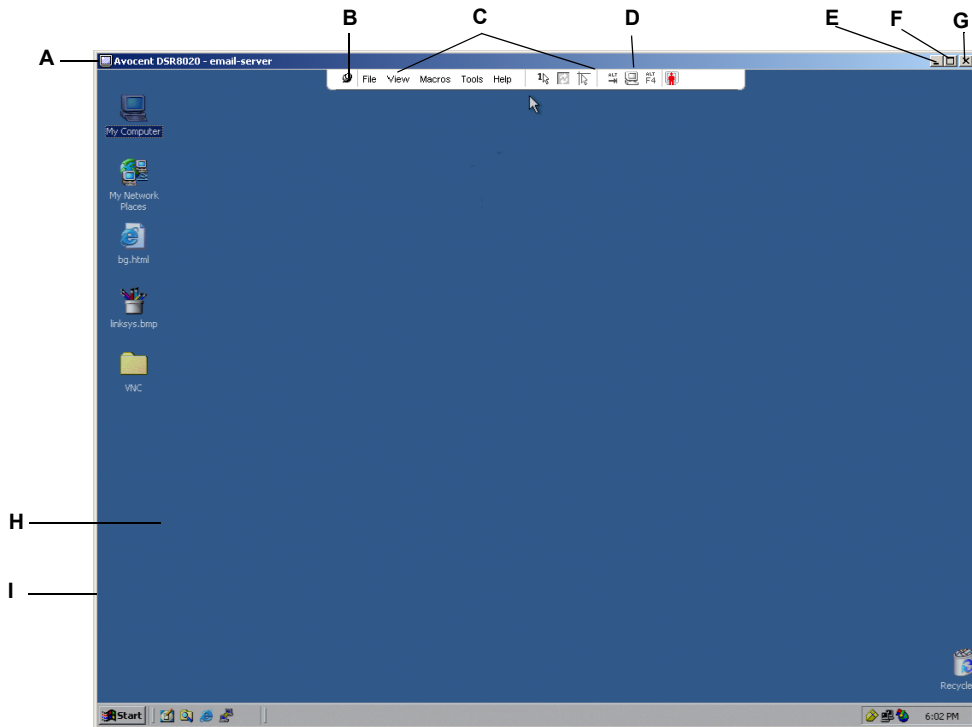


Figure 5.1: Video Viewer Window (Normal Window Mode)

Table 5.1: Video Viewer Window Descriptions

Letter	Description
A	Title Bar: Displays the name of the server being viewed. When in Full Screen mode, the title bar disappears and the server name appears between the menu and toolbar.
B	Thumbtack: Locks the display of the menu and toolbar so that it is visible at all times.
C	Menu and toolbar: Enables you to access many of the features in the Video Viewer window. The menu and toolbar is in a show/hide state if the thumbtack has not been used. Place your cursor over the toolbar to display the menu and toolbar. Up to ten commands and/or macro group buttons can be displayed on the toolbar. By default, the Single Cursor Mode, Refresh, Automatic Video Adjust and Align Local Cursor buttons appear on the toolbar. For more information, see the <i>Changing the toolbar</i> section on page 59 and the <i>Using Macros</i> section on page 68.
D	Macro buttons: Commonly used keyboard sequences that can be sent to the target device.
E	Minimize button: Minimizes the display of the Video Viewer window into the task bar at the bottom of the local computer.
F	Maximize button: Changes the window to Full Screen mode, which expands the accessed device desktop to fill the entire screen. Expanding the window causes the following to occur: <ul style="list-style-type: none"> • The title bar disappears. • The server name appears between the menu and toolbar. • The Maximize button changes to a Normal Window Mode button and appears on the toolbar. Clicking the button toggles the Video Viewer window to Normal Window mode. • The Close button appears on the toolbar.
G	Close button: Closes the Video Viewer window. ^a
H	Accessed device desktop: Interacts with your device through this window.
I	Frame: Resizes the Video Viewer window by clicking and holding on the frame.

^a The Close button may not be present for all operating systems.

Changing the toolbar

You can choose the amount of elapsed time before the toolbar hides in the Video Viewer window when it is in show/hide state (that is, not locked in place by the thumbtack).

To specify a toolbar hide time:

1. Select *Tools - Session Options* from the Video Viewer window menu
-or-
Click the *Session Options* button.

The Session Options dialog box appears.

2. Click the *Toolbar* tab.
3. Use the arrow keys to specify the number of elapsed seconds prior to hiding the toolbar.
4. Click *OK* to save your changes and close the dialog box.

Setting the Window Size

NOTE: The *View - Scaling* command is not available if the Video Viewer window is in Full Screen mode or to non-primary users of a shared session.

When the DSR web server is used for the first time, any open Video Viewer windows display at a resolution of 1024 x 768 until the user changes the value. Each Video Viewer window can be set to a different resolution.

The DSR web server automatically adjusts the display if the window size changes during a session as long as autoscaling is enabled. If the target device resolution changes any time during a session, the display adjusts automatically.

To change the Video Viewer window resolution:

1. Select the *View - Scaling* command.
2. Click on the desired resolution.

Adjusting the View

Using menus or Task buttons in the Video Viewer window, you can do the following:

- Align the mouse cursors.
- Refresh the screen.
- Enable or disable Full Screen mode. When Full Screen mode is enabled, the image adjusts to fit the desktop up to a size of 1024 x 768. If the desktop has a higher resolution, the following occurs:
 - The full-screen image is centered in the desktop, and the areas surrounding the Video Viewer window are black.
 - The menu and toolbar are locked so that they are visible at all times.
- Enable automatic, full or manual scaling of the session image:
 - With full scaling, the desktop window remains fixed and the device image scales to fit the window.
 - With automatic scaling, the desktop window is sized to match the resolution of the server being viewed.
 - With manual scaling, a drop-down menu of supported image scaling resolutions is displayed.
- Change the color depth of the session image.

To align the mouse cursors:

Click the *Align Local Cursor* button in the Video Viewer window toolbar. The local cursor should align with the cursor on the remote device.

NOTE: If cursors drift out of alignment, turn off mouse acceleration in the attached device.

To refresh the screen:

Click the *Refresh Image* button in the Video Viewer window.

-or-

Select *View - Refresh* from the Video Viewer window menu.

The digitized video image is completely regenerated.

To enable or disable full screen mode:

1. To enable **Full Screen mode**, click the *Maximize* button.

-or-

Select *View - Full Screen* from the Video Viewer window menu.

The desktop window disappears and only the accessed device desktop is visible. The screen resizes up to a maximum of 1024 x 768. If the desktop has a higher resolution, then a black background surrounds the full screen image. The floating toolbar appears.

-or-

2. To disable **Full Screen mode**, click the *Full Screen Mode* button on the floating toolbar to return to the desktop window.

To enable automatic, full or manual scaling:

1. To enable **automatic scaling**, select *View - Scaling* from the Video Viewer window menu. The device image scales automatically.

-or-

2. To enable **full scaling**, select *View - Scaling* from the Video Viewer window menu. The device image scales automatically to the resolution of the server being viewed.

-or-

3. To enable **manual scaling**:

- a. Select *View - Scaling* from the Video Viewer window menu.

- b. Choose the dimension to scale the window. Available manual scaling sizes are as follows:

1024 x 768	768 x 576
960 x 720	704 x 528
896 x 672	640 x 480
832 x 624	

Adjusting color depth

The DSR switch Dambrackas Video Compression™ (DVC) algorithm enables users to adjust the number of viewable colors in a remote session window. You can choose to display more colors for the best fidelity or fewer colors to reduce the volume of data transferred on the network.

Video Viewer windows can be viewed using the Best Color Available (slower updates), Best Compression (fastest updates), a combination of Best Color and Best Compression or in Grayscale.

You can specify the color depths of individual ports and channels by selecting the *View - Color* command in a remote session window. These settings are saved individually per channel.

Additional Video Adjustment

Generally, the Video Viewer window automatic adjustment features optimizes the video for the best possible view. However, users can fine-tune the video with the help of Avocent Technical Support by selecting the *Tools - Manual Video Adjust* command in the Video Viewer window menu or clicking the *Manual Video Adjust* button. This displays the Manual Video Adjust dialog box. Video adjustment is a per target setting.

Users can also verify the level of packets per second required to support a static screen by observing the packet rate located in the lower left-hand corner of the dialog box.

To manually adjust the video quality of the window:

NOTE: The following video adjustments should be made only on the advice and with the help of Avocent Technical Support.

1. Select *Tools - Manual Video Adjust* from the Video Viewer window menu.
-or-
Click the *Manual Video Adjust* button.

The Manual Video Adjust dialog box appears. Figure 5.2 shows the dialog box. Table 5.2 on page 63 describes each element of the dialog box..

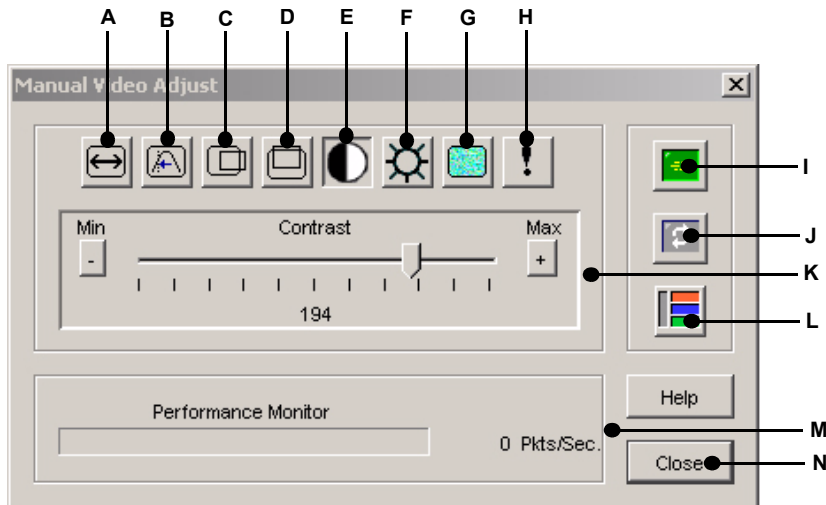


Figure 5.2: Manual Video Adjust Dialog Box

Table 5.2: Manual Video Adjust Dialog Box Descriptions

Letter	Description	Letter	Description
A	Image Capture Width	H	Pixel Noise Threshold
B	Pixel Sampling/Fine Adjust	I	Automatic Video Adjustment
C	Image Capture Horizontal Position	J	Refresh Image
D	Image Capture Vertical Position	K	Adjustment bar
E	Contrast	L	Video Test Pattern
F	Brightness	M	Performance Monitor
G	Block Noise Threshold	N	Close button

- Click the icon corresponding to the feature you wish to adjust.
- Move the Contrast slider bar and then fine-tune the setting by clicking the *Min* (-) or *Max* (+) buttons to adjust the parameter for each icon pressed. The adjustments display immediately in the Video Viewer window.
- When finished, click *Close* to exit the Manual Video Adjust dialog box.

Image capture width, pixel sampling/fine adjust, image capture horizontal position and image capture vertical position

The Image Capture Width, Pixel Sampling/Fine Adjust, Image Capture Horizontal Position and Image Capture Vertical Position adjustments affect how the target video is captured and digitized and are seldom changed.

The image capture parameters are automatically changed by the Automatic Adjustment function. A special image is required on the target in order to make accurate adjustments independently.

Contrast and brightness

If the image in the Video Viewer window is too dark or too light, select *Tools - Automatic Video Adjust* or click the *Automatic Video Adjust* button. This command is also available in the Video Adjustments dialog box. In most cases, this corrects video problems.

In cases where clicking on Auto Adjust several times does not set the contrast and brightness as desired, adjusting the contrast and brightness manually can help. Increase the brightness. Do not go more than 10 increments before moving the contrast. Generally, the contrast should be moved very little.

Detection thresholds

In some cases, noise in the video transmission keeps the packets/sec count up, which is indicated by little dots changing in the area of the cursor when it is moved. Varying the threshold values may result in “quieter” screens and can improve cursor tracking.

You can modify Noise Threshold and Priority Threshold values if you are using standard video compression. You can also modify Block Noise Threshold and Pixel Noise Threshold values. You can restore default threshold values by clicking *Auto Adjust Video*.

Block noise threshold and pixel noise threshold

The Block Noise Threshold and Pixel Noise Threshold values set the minimum color levels in terms of changed video blocks and pixels per thousand that are allowed.

- The **Block Noise Threshold** sets the minimum color change that occurs in a single video block. Increasing the value reduces the network bandwidth. Decreasing the value makes the size of these artifacts smaller.
- The **Pixel Noise Threshold** sets the minimum color change in a single pixel. Decreasing the value reduces the number of low-contrast artifacts, but increases network bandwidth.

See the *Adjusting the View* section on page 60 for information about changing the color depth.

Automatic video adjustment

NOTE: You can also select *Tools - Automatic Video Adjust* from the Video Viewer window menu or click the *Automatic Video Adjust* toolbar icon to automatically adjust the video.

In most cases, you do not need to alter the Video Settings from the default. The system automatically adjusts and uses the optimal video parameters. The DSR web server performs best when the video parameters are set such that no (0) video packets are transmitted for a static screen.

You can easily adjust your video parameters to ideal settings by clicking on the *Auto Adjust Video* button in the Manual Video Adjust dialog box.

NOTE: A green screen with yellow lettering may appear during auto-adjustment.

Refresh image

NOTE: You can also select *View - Refresh* from the Video Viewer window menu to refresh the image.

Clicking the *Refresh Image* button in the Manual Video Adjust dialog box completely regenerates the digitized video image.

Video test pattern

Clicking the *Video Test Pattern* button in the Manual Video Adjust dialog box toggles a display of a video test pattern. Click the *Video Test Pattern* button again to toggle back to a normal video image.

Adjusting Mouse Options

The Video Viewer window mouse options affect cursor type, cursor mode, scaling, alignment and resetting. Mouse settings are device-specific; that is, they may be set differently for each device.

NOTE: If the device does not support the ability to disconnect and reconnect the mouse (almost all newer PCs do), then the mouse will become disabled and the device will have to be rebooted.

Cursor Type

The Video Viewer window offers five appearance choices for the local mouse cursor. You can also choose no cursor or the default cursor.

Single cursor mode

In Single Cursor mode, the display of the local (second) cursor in the Video Viewer window turns off and only the target device mouse pointer is visible. The only mouse movements that appear are those of the target device remote cursor. Use Single Cursor mode when there is no need for a local cursor. Figure 5.3 shows both the Remote Cursor and the Local Cursor displayed in the Video Viewer window.

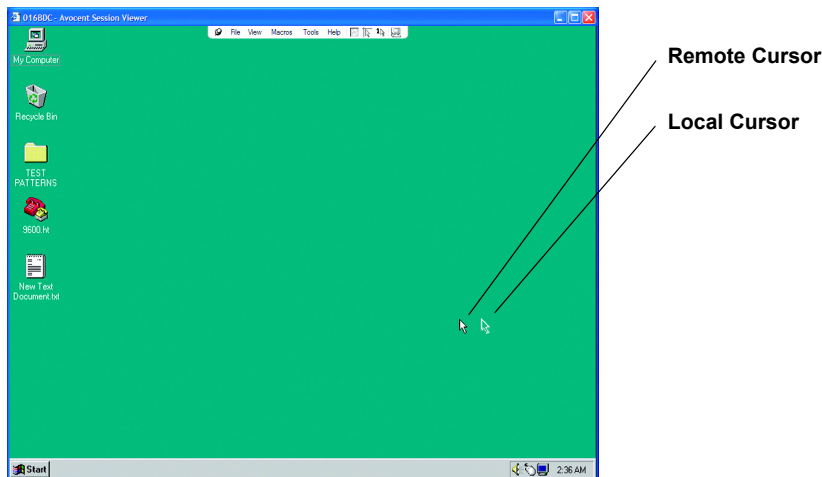


Figure 5.3: Video Viewer Window with Local and Remote Cursors Displayed

The cursor mode status of the Video Viewer window displays in the title bar, including the keystroke that will exit Single Cursor mode. You can define the keystroke that will exit Single Cursor mode in the Session Options dialog box.

NOTE: When using a device that captures keystrokes before they reach the client, you should avoid using those keys to restore the mouse pointer.

To enter single cursor mode:

Select *Tools - Single Cursor Mode* from the Video Viewer window menu.

-or-

Click the *Single Cursor Mode* button.

The local cursor does not appear and all movements are relative to the target device.

To select a key for exiting single cursor mode:

1. Select *Tools - Session Options* from the Video Viewer window menu.
-or-
Click the *Session Options* button.
The Session Options dialog box appears.
2. Click the *Mouse* tab.
3. Select a terminating keystroke from the drop-down menu in the Single Cursor mode area.
4. Click *OK* to save settings.

When you enable Single Cursor mode, you can press the specified key to return to Regular Desktop mode.

To exit single cursor mode:

Press the key on the keyboard that is identified in the title bar.

To change the mouse cursor setting:

1. Select *Tools - Session Options* from the Video Viewer window menu.
-or-
Click the *Session Options* button.
The Session Options dialog box appears.
2. Click the *Mouse* tab.
3. Select a mouse cursor type in the Local Cursor panel.
4. Click *OK* to save settings.

Mouse Scaling

You can choose among three preconfigured mouse scaling options or set your own custom scaling. The preconfigured settings are Default (1:1), High (2:1) or Low (1:2):

- In a 1:1 scaling ratio, every mouse movement on the desktop window sends an equivalent mouse movement to the server.
- In a 2:1 scaling ratio, the same mouse movement sends a 2X mouse movement.
- In a 1:2 scaling ratio, the value is 1/2X.

To set mouse scaling:

1. Select *Tools - Session Options* from the Video Viewer window menu.
-or-

Click the *Session Options* button.

The Session Options dialog box appears.

2. Click the *Mouse* tab.
3. To use one of the preconfigured settings, check the appropriate radio button.

-or-

4. To set custom scaling:
 - a. Click the *Custom* radio button to enable the X and Y fields.
 - b. Type a mouse scaling value in the X and Y fields. For every mouse input, the mouse movements are multiplied by the respective X and Y scaling factors. Valid input range is 0.25-3.00.

Mouse Alignment and Synchronization

Because the DSR web server cannot get constant feedback from the mouse, there are times when the mouse on the DSR switch may lose sync with the mouse on the host system. If your mouse or keyboard no longer responds properly, you can align the mouse to re-establish proper tracking.

Alignment causes the local cursor to align with the cursor on the remote server. Resetting causes the appliance to simulate a mouse and keyboard reconnect at the device as if you had disconnected and then reconnected them.

To realign the mouse:

Click the *Align Local Cursor* button in the Video Viewer window toolbar.

Using Keyboard Pass-through

Keystrokes that a user enters when using a Video Viewer window may be interpreted in two ways, depending on the screen mode of the Video Viewer window.

- If a Video Viewer window is in Full Screen mode, all keystrokes and keyboard combinations except **Ctrl-Alt-Del** are sent to the remote server being viewed.
- If a Video Viewer window is in Regular Desktop mode, Keyboard Pass-through mode can be used to control whether the remote server or local computer recognizes certain keystrokes or keystroke combinations.

Keyboard pass-through must be specified using the Session Options dialog box. When enabled, keyboard pass-through sends all keystrokes and keystroke combinations except **Ctrl-Alt-Del** to the remote server being viewed when the Video Viewer window is active. When the local desktop is active, keystrokes and keystroke combinations entered by the user affect the local computer.

NOTE: The **Ctrl-Alt-Delete** keyboard combination can be sent only to a remote server by using a macro.

NOTE: The Japanese keyboard **ALT-Han/Zen** keystroke combination is always sent to a remote server regardless of the screen mode or keyboard pass-through setting.

To specify keyboard pass-through:

1. Select *Tools - Session Options* from the Video Viewer window menu.
-or-
Click the *Session Options* button.
The Session Options dialog box appears.
2. Click the *General* tab.
3. Select *Pass-through all keystrokes in regular window mode*.
4. Click *OK* to save setting.

Using Macros

The DSR web server comes pre-configured with macros for both the Windows and Sun platforms.

To send a macro:

Select *Macros - <desired macro>* from the Video Viewer window menu.

-or-

Select the desired macro from the buttons available on the Video Viewer menu.

Saving the View

You can save the display of a Video Viewer either to a file or to the clipboard for pasting into a word processor or other program.

To capture the Video Viewer window to a file:

1. Select *File - Capture to File* from the Video Viewer window menu.
-or-
Click the *Capture to File* button.
The Save As dialog box appears.
2. Enter a filename and choose a location to save the file.
3. Click *Save* to save the display to a file.

To capture the Video Viewer window to your clipboard:

Select *File - Capture to Clipboard* from the Video Viewer window menu.

-or-

Click the *Capture to Clipboard* button.

The image data is saved to the clipboard.

Closing a Video Viewer Window Session

To close a Video Viewer window session:

Select *File - Exit* from the Video Viewer window.

Terminal Operations

The Console Menu

Each DSR1021/1022 switch can be configured at the appliance level through the Console menu interface accessed through the SETUP port on the back panel of the switch. You can access all terminal commands through a terminal or PC running terminal emulation software.

NOTE: Avocent does not recommend this method for setting options for the DSR1021/1022 switch. The preferred method is to make all configuration settings except those for the web server in the DSView 3 software. The web server can be configured only through the Console menu interface.

See the *DSView Installer/User Guide* or DSView 3 Online Help for more information on configuring the DSR1021/1022 switch.

Network Configuration

To configure network settings using the Console menu:

1. When you power on your DSR1021/1022 switch, the switch initializes for approximately one minute. After it completes initialization, press any key on the terminal or on the PC running the terminal emulation software to access the Console menu interface as shown in Figure 6.1 on page 72.

NOTE: The terminal can be connected at any time, even when the switch is already powered on.

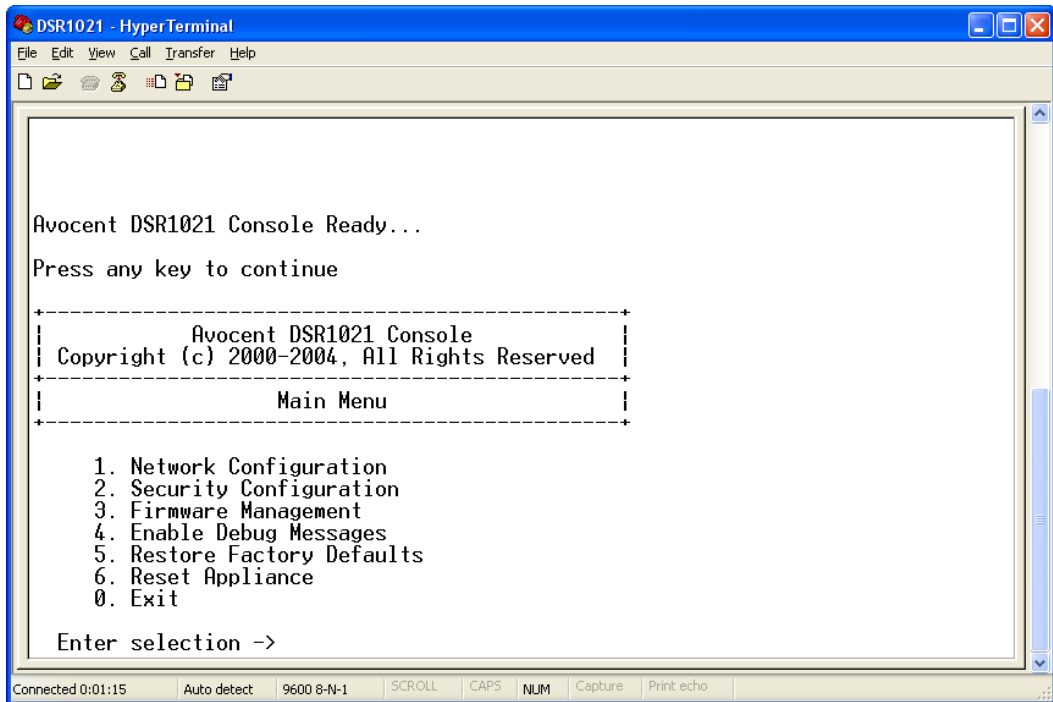


Figure 6.1: Console Main Menu

2. The Console Main menu displays as shown in Figure 6.1.
3. Type **1** and press **Enter** for the Network Configuration option to display the Network Configuration menu shown in Figure 6.2 on page 73.

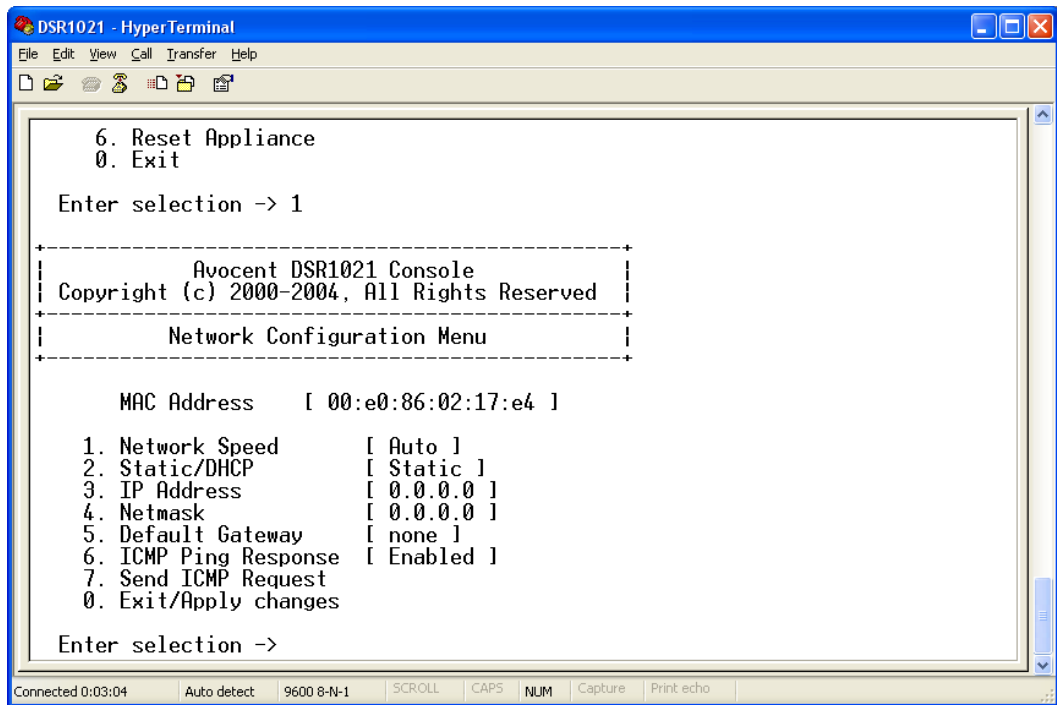


Figure 6.2: Network Configuration Menu

4. Type **1** and press **Enter** to set your network speed and return to the Network Configuration menu. When possible, set your connection manually without relying on the auto negotiate feature.
5. Type **2** and press **Enter** to specify whether you are using a static or Dynamic Host Configuration Protocol (DHCP) address.
 - A static IP address can be used to provide a user-defined IP address, netmask and default gateway for the DSR1021/1022 switch. Avocent recommends using a static IP address for ease of configuration.
 - DHCP is a protocol that automates the configuration of TCP/IP-enabled computers. When DHCP is selected, the IP Address, Netmask and Default Gateway settings are automatically assigned to the DSR1021/1022 switch and cannot be modified by a DS user. If you are using the DHCP option, please configure your DHCP server to provide an IP address to the DSR1021/1022 switch and then skip step 6.
6. Select the remaining options from the Network Configuration menu, in turn, to finish configuring your DSR1021/1022 switch for IP address, netmask, default gateway and ping response.
7. Type **0** (zero) and press **Enter** to return to the Console Main menu.

Other Console Main Menu Options

Besides the Network Configuration option, the Console Main menu of the DSR1021/1022 switch features the following menu items:

- Security Configuration
- Firmware Management
- Enable Debug Messages
- Restore Factory Defaults
- Reset Appliance and Exit

Security Configuration

The DSR1021/1022 switch contains an internal database that can be used by the DSR Remote Operations software, the local port, or the CONSOLE port if the DSView 3 software is unavailable.

The Security Configuration menu contains the following options:

- Local User Accounts: Add, edit or delete users to/from the DSR1021/1022 switch database.
- Console Password: Enable or disable using security for the console (access requires an Admin account).
- Reset Certificates: Reset the certificate used by the DSView 3 software system.
- Secure Mode: Enable or disable the DSView 3 software Secure mode.

Local User Accounts

NOTE: When you use the options to add, edit or delete a user, a list of existing users appear. Enter **N** to display the next page of users in the database or enter **P** to go back to the previous page of users.

To add a user to the DSR1021/1022 switch database:

1. Type **2** and press **Enter** to access the Security Configuration menu option.
2. Type **1** and press **Enter** to access the Local User Accounts menu option. A list of users already within the database appears.
3. Type **A**.
4. At the user name prompt, type a username and press **Enter**.
5. At the password prompt, type a password and press **Enter**.
6. At the next prompt, type the password again and press **Enter**.
7. Enter **0** (zero) to exit.

To rename a user in the DSR1021/1022 switch database:

1. From the Console Main menu, type **2** and press **Enter** to access the Security Configuration menu option.
2. Type **1** and press **Enter** to access the Local User Accounts menu option. A list of users already within the database appears.
3. Type **E**.
4. At the prompt, enter the number of the user you wish to rename and then press **Enter**.
5. Type a new username and press **Enter**.
6. Enter the password for the user.
7. Re-enter the password to confirm it.
8. Enter **0** (zero) to exit.

To remove a user from the DSR1021/1022 switch database:

1. From the Console Main menu, type **2** and press **Enter** to access the Security Configuration menu option.
2. Type **1** and press **Enter** to access the Local User Accounts menu option. A list of users already within the database appears.
3. Type **D**.
4. At the prompt, enter the number of the user you wish to delete and then press **Enter**.
5. At the prompt, type **Y** to confirm deletion of the user from the DSR1021/1022 switch database.
6. Press **Enter** to remove the user.
7. Enter **0** (zero) to exit.

Console Password

If this is enabled, the user must log in to access to the switch's Console Main menu.

Reset Certificates

This menu option enables you to clear the certificate sent by the DSView 3 software to the DSR1021/1022 switch.

When a DSR1021/1022 switch is added to a server running DSView 3 software, a certificate automatically downloads from that server to the DSR1021/1022 switch. That certificate is replicated across all servers running DSView 3 software operating in a predefined system. Thereafter, any of the servers in that system will be able to communicate with the DSR1021/1022 switch.

If the server running DSView 3 software cannot contact the DSR1021/1022 switch to add the certificate, an error message displays and the DSR1021/1022 switch is not added to the database.

Secure Mode

The DSR1021/1022 switch operates in one of two modes: Security disabled or Security enabled.

- In Security disabled mode, the DSR1021/1022 switch allows any server running DSView 3 software to communicate with it.
- In Security enabled mode, an initial server running DSView 3 software can download a certificate to the switch. If that server is part of a system that replicates certificates, it passes the certificate to the other servers in that certificate replication system. Thereafter, all servers in that system will be allowed to access the DSR1021/1022 switch. All servers that are not part of that system will be locked out.

When the DSR1021/1022 switch is removed from the DSView 3 software database, the certificate is removed from the DSR1021/1022 switch. This enables you to move the DSR1021/1022 switch from one certificate replication system to another. You can also remove the certificate by using the Console menu accessed via the SETUP port on the DSR1021/1022 switch. See the *Reset Certificates* section on page 75 for instructions.

See the *DSView Installer/User Guide* for more information on software security.

Firmware Management

This menu contains the FLASH Download selection. For more information, see *Appendix A* on page 77.

Enable Debug Messages

This menu option turns on console status messages. Because this can significantly reduce performance, you should enable debug messages only when instructed to do so by Avocent Technical Support. When you are finished viewing the messages, press any key to exit this mode.

Restore Factory Defaults

This menu option restores all switch options to the default settings.

Reset Appliance

You can execute a soft reset of the DSR1021/1022 switch with this menu option.

Exit

This menu selection returns you to the ready prompt. If the Console menu interface password is enabled, you must exit the Console Main menu so that the next user will be prompted with the Username and Password login screen.

APPENDICES

Appendix A: FLASH Upgrades

You can use the DSR1021/1022 switch FLASH upgrade feature to update your appliance with the latest firmware available. You can perform this update by using the DSView 3 software or by using a Trivial File Transfer Protocol (TFTP) server.

After the FLASH memory is reprogrammed with the upgrade, the DSR1021/1022 switch performs a soft reset, which terminates all DSRIQ module sessions. A target device experiencing a DSRIQ module firmware update may not display, or may display as disconnected. The target device will appear normally when the FLASH update is completed.

NOTE: During an upgrade, the DSRIQ module status indicator in the OSCAR Main dialog box will be yellow.



CAUTION: Disconnecting a DSRIQ module during a firmware update or cycling power to the target device will render the module inoperable and require the DSRIQ module to be returned to the factory for repair.

To upgrade the DSR1021/1022 switch firmware using the DSView 3 software:

The preferred method for updating the firmware is to use the DSView 3 software. See the *DSView Installer/User Guide* for detailed instructions.

To upgrade the DSR1021/1022 switch firmware using the Console menu interface:

NOTE: If you do not have a TFTP server, you can find several shareware and freeware programs on the Internet that you can download and install.

1. Visit <http://www.avocent.com/support> and download the latest FLASH firmware from Avocent. Save the FLASH upgrade file to the appropriate directory on the TFTP server.
2. Connect a terminal or PC running terminal emulation software (such as HyperTerminal) to the SETUP port on the back panel of the DSR1021/1022 switch using the supplied null modem cable. Set the terminal to 9600 bps, 8 bits, 1 stop bit, no parity and no flow control.
3. If the DSR1021/1022 switch is not on, turn it on now. After approximately one minute, press any key to access the Console Main menu.
4. The Console Main menu displays. Select the *Firmware Management* option.

NOTE: The current version of your firmware displays on the Firmware Management menu.

5. Type **1** and press **Enter** to access FLASH Download.
6. Type the IP address of your TFTP server and press **Enter**.
7. Enter the name of the file that you downloaded from the Avocent web site.
8. Confirm the TFTP download by typing **y** or **yes** and pressing **Enter**. The DSR1021/1022 switch will verify that the file you downloaded is valid.
9. At the prompt, confirm the upgrade by typing **y** or **yes** and press **Enter** to confirm.

10. The DSR1021/1022 switch begins the FLASH upgrade process. On-screen indicators display the upgrade progress. When the upload is complete, the DSR1021/1022 switch resets and upgrades the internal subsystems.
11. Once the upgrade is complete, a verification message appears on-screen.

Appendix B: Using DSView Software Over a Modem Connection

An external modem can be attached to the DSR1021/1022 switch. You can use this modem to access the switch when an Ethernet connection is not available.

A modem/PPP dial-up connection must be established before the remote operation is enabled. Be sure to set the dial-up connection options to 115,200 bps, 8 bits, 1 stop bit, no parity and enabled hardware flow control.

Before you begin

Perform the following actions before using the DSR Remote Operations software:

- Ensure that the DSR1021/1022 switch is configured. See Chapter 2 for more information.
- Ensure that DSR1021/1022 switch users have been added to the DSR1021/1022 switch internal database. If the DSView 3 software is not available, the switch database is used for authentication. If neither are available, authentication cannot be performed for the DSR1021/1022 switch. See Chapter 4 for more information.
- Ensure that an external modem is attached to the DSR1021/1022 switch MODEM port. The modem should have auto-answer turned off (typically a modem's default setting).
- Ensure that your client PC contains dial-up software and that the software is configured properly. See your operating system documentation for more information.

Establishing a DSR Remote Operations software connection

See the *DSView Installer/User Guide* for detailed instructions on how to establish a DSR Remote Operations software connection.

Appendix C: Using DSRIQ-SRL Modules

The DSRIQ-SRL module is a serial-to-VGA converter that permits VT100-capable devices to be viewed from the DSR1021/1022 switch local port or by using the DSView 3 software. The actual serial data is not accessed but is merely displayed. All serial data coming from the target device is displayed in a VT100 window, placed into a video buffer and sent to the DSR1021/1022 switch as though it came from a VGA target. Likewise, keystrokes entered on a keyboard are sent to the attached device as though they were typed upon a VT100 terminal.

DSRIQ-SRL module modes

You can access the following modes from the DSRIQ-SRL module:

- **On-Line:** This mode enables you to send and receive serial data.
- **Configuration:** This mode enables you to specify DSR1021/1022 switch communication parameters, the appearance of the Terminal Applications menu and key combinations for specific actions and macros.
- **History:** This mode enables you to review serial data.

Configuring the DSRIQ-SRL module

NOTE: The DSRIQ-SRL module is a DCE device and supports only VT100 terminal emulation.

Pressing **Ctrl-F8** activates the Configuration screen of the DSRIQ module's Terminal Applications menu, which enables you to configure your DSRIQ-SRL module.

NOTE: When any Terminal Applications menu is active, pressing **Enter** saves changes and returns you to the previous screen. Pressing **Escape** returns you to the previous screen without saving changes.

Within the Terminal Applications menu's Configuration screen, you can modify the following options:

- **Baud Rate:** Use this option to specify the serial port communications speed. Available options are 300, 1200, 2400, 9600, 19,200, 34,800, 57,600 or 115,200 bps. The default value is 9600.
- **Parity:** Use this option to specify the serial port's communications parity. Available options are EVEN, ODD or NONE. The default value is NONE.
- **Flow Control:** Use this option to specify the type of serial flow control. Available options are NONE, XOn/XOff (software) and RTS/CTS (hardware). The default value is NONE. If you select a bps rate of 115,200, the only available flow control is RTS/CTS (hardware).
- **DSR/CD Mode:** Use this option to control how the DSR1021/1022 switch and CD lines operate. Available options are Always on and Toggle. When in Toggle mode, DSR and CD lines are turned off for one-half second and then turned on each time a module is selected or deselected. The default value is Always on.

- **Enter Sends:** Use this option to specify the keys that are transmitted when **Enter** is pressed. Available options are <CR> (Enter), which moves the cursor to the left side of the screen, or <CR><LF> (Enter-Linefeed), which moves the cursor to the left side of the screen and down one line.
- **Received:** This option enables you to specify how the module translates a received **Enter** character. Available options are <CR> (Enter) or <CR><LF> (Enter-Linefeed).
- **Background:** This option changes the screen's background color. The currently-selected color displays in the option line as it is changed. Available colors are Black, Light Grey, Yellow, Green, Teal, Cyan, Blue, Dark Blue, Purple, Pink, Orange, Red, Maroon and Brown. The default color is Black. This value cannot be identical to the Normal Text or Bold Text value.
- **Normal Text:** This option changes the screen's normal text color. The currently-selected color displays in the option line as it is changed. Available colors are Grey, Light Grey, Yellow, Green, Teal, Cyan, Blue, Dark Blue, Purple, Pink, Orange, Red, Maroon and Brown. The default color is Grey. This value cannot be identical to the Bold Text or Background value.
- **Bold Text:** This option changes the screen's bold text color. The currently-selected color displays in the option line as it is changed. Available colors are White, Yellow, Green, Teal, Cyan, Blue, Dark Blue, Purple, Pink, Orange, Red, Maroon, Brown and Light Grey. The default color is White. This value cannot be identical to the Normal Text or Background value.
- **Screen Size:** This option allows you to specify the screen's text width size. Available values are widths of 80 columns or 132 columns. The length for both widths is 26 lines.

Use the following Terminal Application menu's Configuration screen options to define the function keys that will perform a selected action. To specify a new function key, press and hold the **Ctrl** key, then press the function key that you want to associate with the action. For example, if you want to change the Configuration (Config) Key Sequences option from <CTRL-F8> to <CTRL-F7>, press and hold the **Ctrl** key and then press **F7**.

- **Config Key Sequences:** Use this option to define the key combination that causes the Terminal Application menu's Configuration screen to appear. The default key sequence is **Ctrl-F8**.
- **On-Line Key Sequence:** Use this option to define the key sequence that displays the On-Line mode. The default key sequence is **Ctrl-F10**.
- **Help Key Sequence:** Use this option to define the key combination that displays the Help System screen. The default key sequence is **Ctrl-F1**.
- **History Key Sequence:** Use this option to define the key combination that enables History mode. The default key sequence is **Ctrl-F9**.
- **Clear History Key Sequence:** Use this option to define the key combination that clears the history buffer while in History mode. The default key sequence is **Ctrl-F11**.
- **Break Key Sequence:** Use this option to configure the key combination that generates a break condition. The default key sequence is **Alt-B**.

To configure a DSRIQ-SRL module:

1. Press **Ctrl-F8** to open the Configuration Screen.
2. Select a parameter to change. You can navigate the Configuration Screen using the **Up Arrow** and **Down Arrow** keys.
3. Modify the selected value using the **Left Arrow** and **Right Arrow** keys.
4. Repeat steps 2 and 3 to modify additional values.
5. Press **Enter** to save your changes and exit the Configuration Screen.
-or-
Press **Escape** to exit the Configuration Screen without saving the changes.

Creating a DSRIQ-SRL module macro

You can access the Macro Configuration screen by pressing the **Page Down** key while the Terminal Applications menu's Configuration screen is open. You can configure the DSRIQ-SRL module with up to 10 macros. Each macro can be up to 128 characters in length.

To create a macro:

1. Select the DSRIQ-SRL module you wish to configure and press **Ctrl-F8** to activate the Terminal Applications menu's Configuration screen.
2. When the Terminal Applications menu appears, press **Page Down** to view the Macro Configuration screen. The Macro Configuration screen shows the 10 available macros and the associated key sequences, if any, for each.
3. Using the **Up Arrow** and **Down Arrow** keys, scroll to an available macro number and highlight the listed keystroke sequence. Type the new macro keystroke sequence over the default. Any combination of **Ctrl** or **Alt** and a single key may be used. When you have finished entering the keystroke sequence that will activate the new macro, press the **Down Arrow** key.
4. On the line below the macro keystroke sequence you just entered, type the keystroke sequence that you wish the macro to perform.
5. Repeat steps 3 and 4 to configure additional macros.
6. When finished, press **Enter** to return to the previous screen.

Using History mode

You can use History mode to examine the contents of the history buffer, which contains the events that have occurred. The DSRIQ-SRL module maintains a buffer containing 240 lines minimum, or 10 screens, of output. When the history buffer is full, it will add new lines at the bottom of the buffer and delete the oldest lines at the top of the buffer.

NOTE: The Config Key Sequence, On-Line Key Sequence and Clear History Key Sequence used in the following procedure are the default values. You can change these key combinations by using the Terminal Applications menu.

To use History mode:

1. Press **Ctrl-F9** to enter into History mode.
2. Press one of the following key combinations to perform the indicated action:
 - **Home**: Move to the top of the buffer.
 - **End**: Move to the bottom of the buffer.
 - **Page Up**: Move up one buffer page.
 - **Page Down**: Move down one buffer page.
 - **Up Arrow**: Move up one buffer line.
 - **Down Arrow**: Move down one buffer line.
 - **Ctrl-F8**: Enter Configuration mode by opening the Configuration screen.
 - **Ctrl-F9**: While in Configuration mode, return to the previous screen with History mode enabled.
 - **Ctrl-F10**: While in Configuration mode, return to the previous screen with On-Line mode enabled.
 - **Ctrl-F11**: Clear the history buffer. If you choose this option, a warning screen will appear. Press **Enter** to delete the history buffer, or **Escape** to cancel the action. The previous screen will reappear.
3. When finished, press **Ctrl-F10** to exit History mode and return to On-Line mode.

DSRIQ-SRL module pinouts

Table C.1: DSRIQ-SRL Module Pinouts

DB9-F Pin	Host Signal Name/Description	Signal Flow	SRL Signal Name/Description
1	DCD - Data Carrier Detect	Out of SRL	DTR - Data Terminal Ready
2	RXD - Receive Data	Out of SRL	TXD - Transmit Data
3	TXD - Transmit Data	In to SRL	RXD - Receive Data
4	DTR - Data Terminal Ready	In to SRL	DSR - Data Set Ready
5	GND - Signal Ground	N/A	GND - Signal Ground
6	DSR - Data Set Ready	Out of SRL	DTR - Data Terminal Ready
7	RTS - Request to Send	In to SRL	CTS - Clear to Send
8	CTS - Clear to Send	Out of SRL	RTS - Request to Send
9	N/C - Not Connected	N/A	N/C - Not Connected

Appendix D: UTP Cabling

The following information is intended to brief you on various aspects of connection media. The performance of a DSR1021/1022 switching system depends on high quality connections. Poor quality or poorly installed or maintained cabling can diminish DSR system performance.

NOTE: This appendix is for information purposes only. Please consult with your local code officials and cabling consultants prior to any installation.

DSR1021/1022 switching systems use UTP cabling.

UTP copper cabling

The three types of UTP cabling that the DSR switch supports are as follows:

- CAT 5 UTP (4-pair) high performance cable consists of twisted pair conductors used primarily for data transmission. The twisting of the pairs gives this cable some immunity from the infiltration of unwanted interference. CAT 5 cable is generally used for networks running at 10 or 100 Mbps.
- CAT 5E (enhanced) cable has the same characteristics as CAT 5, but is manufactured to somewhat more stringent standards.
- CAT 6 cable is manufactured to tighter requirements than CAT 5E cable. CAT 6 has higher measured frequency ranges and significantly better performance requirements than CAT 5E cable at the same frequencies.

Wiring standards

The 8-conductor (4-pair) RJ-45 terminated UTP cable: EIA/TIA 568A and B has two supported wiring standards. These standards apply to installations using CAT 5, 5E and 6 cable specifications. The DSR1021/1022 switching system supports either of these wiring standards. Table D.1 details these wiring standards.

Table D.1: UTP Wiring Standards

Pin	EIA/TIA 568A	EIA/TIA 568B
1	white/green	white/orange
2	green	orange
3	white/orange	white/green
4	blue	blue
5	white/blue	white/blue
6	orange	green

Table D.1: UTP Wiring Standards (Continued)

Pin	EIA/TIA 568A	EIA/TIA 568B
7	white/brown	white/brown
8	brown	brown

Cabling installation, maintenance and safety tips

Prior to installing or maintaining your cables, review the following list of important safety considerations:

- Keep all CAT 5 runs to a maximum of 10 meters each.
- Maintain the twists of the pairs all the way to the point of termination, or no more than one-half inch untwisted. Do not skin off more than one inch of jacket while terminating.
- If bending the cable is necessary, make it gradual with no bend sharper than a one inch radius. Allowing the cable to be sharply bent or kinked can permanently damage the cable's interior.
- Dress the cables neatly with cable ties, using low to moderate pressure. Do not over tighten ties.
- Cross-connect cables where necessary, using rated punch blocks, patch panels and components. Do not splice or bridge cables at any point.
- Keep CAT 5 cable as far away as possible from potential sources of EMI, such as electrical cables, transformers and light fixtures. Do not tie cables to electrical conduits or lay cables on electrical fixtures.
- Always test every installed segment with a cable tester. "Toning" alone is not an acceptable test.
- Always install jacks so as to prevent dust and other contaminants from settling on the contacts. The contacts of the jack should face up on the flush mounted plates, or left/right/down on surface mount boxes.
- Always leave extra slack on the cables, neatly coiled in the ceiling or nearest concealed location. Leave at least five feet at the work outlet side and 10 feet at the patch panel side.
- Choose either 568A or 568B wiring standard before beginning. Wire all jacks and patch panels for the same wiring scheme. Do not mix 568A and 568B wiring in the same installation.
- Always obey all local and national fire and building codes. Be sure to firestop all cables that penetrate a firewall. Use plenum rated cable where it is required.

Appendix E: Technical Specifications

Table E.1 lists the technical specifications for the DSR1021/1022 switch.

Table E.1: DSR1021/1022 Switch Product Specifications

Server Ports	
Number	8 (DSR1021 switch) 4 (DSR1022 switch)
Types	DSRIQ-PS/2, DSRIQ-USB, DSRIQ-VSN (Sun VGA), DSRIQ-WSN (Sun 13W3) and DSRIQ-SRL modules
Connectors	RJ-45
Sync Types	Separate horizontal and vertical
Plug and Play	DDC2B
Video Resolution	640 x 480 @ 60 Hz (Local Port and Remote Port Minimum) 800 x 600 @ 75 Hz 960 x 700 @ 75 Hz 1024 x 768 @ 75 Hz 1280 x 1024 @ 75 Hz (Remote Port Maximum using a DSRIQ module)
Supported Cabling	4-pair UTP CAT 5 or CAT 6, 10 meters maximum length
SETUP Port	
Number	1
Type	Serial RS-232 Null Modem Cable
Connector	DB9 Male
Network Connection	
Number	1
Type	Ethernet: IEEE 802.3 2002 Edition - 10BaseT, 100BaseT
Connector	RJ-45
Local Port	
Number	1
Type	PS/2 and VGA
Connectors	PS/2 MiniDIN and 15-pin D-Sub
MODEM Port	
Number	1

Table E.1: DSR1021/1022 Switch Product Specifications (Continued)

Type	Serial RS-232
Connectors	DB9 Male
SPC Device Port	
Number	1
Type	RJ-45
Dimensions	
Height x Width x Depth	1.72 x 17.00 x 8.08 in; 1U form factor (4.37 x 43.18 x 20.51 cm)
Weight	5.3 lbs (2.40 kg) without cables
Heat Dissipation	92 BTU/hr
Airflow	8 cfm
Power Supply	
AC-input Power	25 W maximum
AC-input Range	100 - 240 VAC
AC-input Current Rating	600 mA RMS Max
AC-input Cable	18 AWG three-wire cable, with a three-lead IEC-320 receptacle on the power supply end and a country-dependent plug on the power resource end
AC Frequency	50 - 60 Hz autosensing
Ambient Atmospheric Condition Ratings	
Temperature	32 to 104 degrees Fahrenheit (0 to 40 degrees Celsius) operating; -4 to 158 degrees Fahrenheit (-20 to 70 degrees Celsius) nonoperating
Humidity	10 - 95% noncondensing
Safety and EMC Standards	UL, FCC, cUL, ICES-003, CE, GS, VCCI, MIC, C-Tick, GOST

Appendix F: Sun Advanced Key Emulation

Certain keys on a standard Type 5 (US) Sun keyboard can be emulated by key press sequences on a PS/2 keyboard. To enable Sun Advanced Key Emulation mode and use these keys, press and hold **Ctrl+Shift+Alt** and then press the **Scroll Lock** key. The *Scroll Lock* LED blinks. Use the indicated keys in Table F.1 as you would use the advanced keys on a Sun keyboard.

Table F.1: Sun Key Emulation

Sun Key (US)	PS/2 Key to Enable Sun Key Emulation
Compose	Application ⁽¹⁾
Compose	keypad
Power	F11
Open	F7
Help	Num Lock
Props	F3
Front	F5
Stop	F1
Again	F2
Undo	F4
Cut	F10
Copy	F6
Paste	F8
Find	F9
Mute	keypad /
Vol.+	keypad +
Vol.-	keypad -
Command (left) ⁽²⁾	F12
Command (left) ⁽²⁾	Win (GUI) left ⁽¹⁾
Command (right) ⁽²⁾	Win (GUI) right ⁽¹⁾

(1) Windows 95 104-key keyboard

(2) The Command key is the Sun Meta (diamond) key

For example: For **Stop + A**, press and hold **Ctrl+Shift+Alt** and press **Scroll Lock**, then **F1 + A**.

These key combinations will work with the DSRIQ-USB module (if your Sun system comes with a USB port) as well as the Sun DSRIQ-VSN and DSRIQ-WSN modules. With the exception of **F12**, these key combinations are not recognized by Microsoft Windows. Using **F12** performs a Windows key press.

When finished, press and hold **Ctrl+Shift+Alt** and then press the **Scroll Lock** key to toggle Sun Advanced Key Emulation mode off.

Special considerations for Japanese Sun USB and Korean Sun USB keyboards (DSRIQ-USB modules only)

Japanese Sun USB and Korean Sun USB keyboards assign usage IDs for certain keys that differ from standard USB usage IDs. If DSRIQ-USB modules are attached to your Sun servers, the Han/Zen and Katakana/Hiragana keys on Japanese Sun USB keyboards and Hangul and Hanja keys on Korean Sun USB keyboards must be accessed using alternate keystrokes.

Due to these keyboard-specific differences, keyboard mapping inconsistencies may be encountered when switching between target devices using Sun DSRIQ-VSN and DSRIQ-WSN modules and target devices using DSRIQ-USB modules. These keys function normally if your Sun servers are attached to the DSR1021/1022 switch using a DSRIQ-VSN or DSRIQ-WSN module.

Table F.2 lists the keyboard mappings that take place when a DSRIQ-USB module is used in this setting.

Table F.2: PS/2-to-USB Keyboard Mappings

PS/2 Keyboard	USB Usage ID	Sun USB Keyboard	Korean Sun USB Keyboard	Japanese Sun USB Keyboard
Right-Alt	0xE6	AltGraph	Hangul	Katakana/Hiragana
Windows Application	0x65	Compose	Hanja	Compose
Hangul	0x90	N/A	N/A	N/A
Hanja	0x91	N/A	N/A	N/A
Katakana/Hiragana	0x88	N/A	N/A	Han/Zen
Han/Zen	0x35	` ~	` ~	N/A

Appendix G: Technical Support

Our Technical Support staff is ready to assist you with any installation or operating issues you encounter with your Avocent product. If an issue should develop, follow the steps below for the fastest possible service:

1. Check the pertinent section of the manual to see if the issue can be resolved by following the procedures outlined.
2. Check our web site at www.avocent.com/support to search the knowledge base or use the on-line service request.
3. Call Avocent Technical Support for assistance at (888) 793-8763. Visit the Avocent web site at <http://www.avocent.com/support> and click on *Support Phone Numbers* for current phone support hours.

Index

Numerics

100BaseT Ethernet **1, 5, 86**

10BaseT Ethernet **5, 86**

A

access

direct **21**

DSRIQ module **22**

DSRIQ Terminal Applications menu **11**

OSCAR interface

Broadcast dialog box **33**

Commands dialog box **41**

Devices dialog box **28**

Flag dialog box **31**

Main dialog box **21**

Menu dialog box **30**

Names dialog box **26**

Screen Saver dialog box **37**

Setup dialog box **26**

restrict **25**

Screen Saver mode **24**

secure, remote **1**

target device **2**

target devices **1**

via a network connection **2**

via modem **1, 2, 9**

via network connection **9**

add a user to the DSR switch database **74**

assign a device type **29**

B

Basic DSR Configuration **7**

Benefits **1**

Broadcast

dialog box **33**

Enable **41**

OSCAR interface **25**

C

cascade switch **25, 28, 29**

CAT 5 patch cable **1, 8, 9, 10, 84, 85, 86**

Changing the Display Behavior **29**

Commands

Broadcast **34**

Broadcast Enable **34, 41**

dialog box **36, 41**

Display Versions **41, 44**

Manage Routine Tasks for Your Server **41**

Reset PS/2 **41, 43**

Scan Enable **37, 41**

Scan mode **36**

User Status **41, 42**

connect a DSRIQ module to a server **9**

connect and power up your DSR switch **8**

Console menu **71, 76, 77**

add a user **74**

Controlling the Status Flag **31**

D

Device Modify Dialog Box **29**

Device Types

Assigning **28**

Devices

dialog box **28**

OSCAR interface **25**

Setup Features **25**

disconnect

dialog box **42, 43**

DSRIQ modules **22**

flag **31**

target device **23**

user **42**

user connections **42**

users **41, 42, 43**

Display Versions **41**

DSR switch **1**

comes with **8**

Features **1**

Installation **5**

Model Comparison **4**

Network Configuration **3**

port **29**

Product Specifications **86**

DSR switch database

add user **74**

remove user **75**

rename user **75**

DSRIQ

module **7, 8, 9, 10, 11, 51, 77, 80, 86**

connecting **9**

Selection dialog box **44, 45**

Version dialog box **44, 45**

DSRIQ port **7**

DSRIQ-SRL module **2, 8, 10, 11, 80, 86**

configuring **80, 82**

creating macros **82**

History mode **82**

modes **80**

pinouts **83**

DSView Explorer

printing a window **50**

refreshing a window **50**

window areas **48**

DSView software **2, 5, 6, 8, 9, 11, 37, 38, 71, 74, 75, 76, 77, 79, 80**

configuring **11**

database **76**

illustrated **3**

Screen Saver password **38**

Secure mode **74**

security **76**

system **74**

E

Enable Debug Messages **76**

Escape **24, 28, 34, 43, 44**

Example DSR Switch Configuration **3**

F

Features **1**

Firmware Management **76**

Flag

- Color **32**
- dialog box **32**
 - access **31**
- Opaque **32**
- OSCAR interface **25**
- Transparent **32**

FLASH

- Download **76**
- Upgrades **77**

H**History**

- mode **81, 82, 83**

I

- Installation **5**
- Installation Overview **6**

J

- Japanese Approvals **ii**
- Japanese Sun USB Keyboards **89**

K**keyboard**

- dialog box **40**
- OSCAR interface **25**

- Korean Sun USB Keyboards **89**

KVM 5

- cable volume **1**
- illustrated **7**
- switch **1**

KVM session. See *Video Viewer*

L

- Local country power cord **8**

Local Port Operation 21**M****Macros (Video Viewer)**

- about **68**
- sending **68**

Main Dialog Box 21**Menu**

- OSCAR interface **25**
- modem **1, 2, 5, 6, 8, 9, 79**
 - illustrated **3**
 - port **1, 79**

Mouse settings

- aligning in the Video Viewer **67**

N**Name Modify Dialog Box 27****Names**

- dialog box **25, 27**
- network speed **73**
- null modem cable **8, 9, 77, 86**

O**OSCAR interface**

- Alt **24**
- Broadcast dialog box **33**
- change the display order **29**
- Commands dialog box **36, 41**
- Commands menu **41**
- Device Modify dialog box **29**
- Devices dialog box **28**
- Disconnect dialog box **43**
- DSRIQ Selection dialog box **45**
- DSRIQ Version dialog box **45**
- Enter **24**

- Escape **24**
- Flag dialog box **32**
- Keyboard dialog box **40**
- Main dialog box **21**
- menus **25**
- Name Modify dialog box **27**
- Names dialog box **26, 27**
- Navigating **24**
- Print Screen **24**
- Scan dialog box **35**
- screen delay **23**
- Screen Saver dialog box **37**
- set a Screen Delay Time **29, 31**
- Single-click, Enter **24**
- Status Flags **31**
- Status symbols **22**
- User Status dialog box **42**
- Version dialog box **44**

P

- Point-to-Point Protocol **5**
- Position Flag **32**
- POWER LED **11**
- PPP **5**
- Print Screen **24**
 - OSCAR interface **25**
- procedure
 - To access the OSCAR interface Broadcast dialog box **33**
 - To access the OSCAR interface Commands dialog box **41**
 - To access the OSCAR interface Devices dialog box **28**
 - To access the OSCAR interface Flag dialog box **31**
 - To access the OSCAR interface Menu dialog box **30**
 - To access the OSCAR interface Names dialog box **26**
 - To access the OSCAR interface Screen Saver dialog box **37**
 - To access the OSCAR interface Setup dialog box **26**
 - To add a user to the DSR switch database **74**
 - To add target devices to the scan list **35**
 - To assign a device type **29**
 - To assign names to target devices **27**
 - To broadcast to selected target devices **34**
 - To cancel scan mode **37**
 - To choose the display order of target devices **30**
 - To configure a DSRIQ-SRL module **82**
 - To configure network settings using the Console menu **71**
 - To configure the OSCAR interface screen delay **23**
 - To connect a DSRIQ module to a serial device **10**
 - To connect a DSRIQ module to a server **9**
 - To connect and power up your DSR switch **8**
 - To create a DSRIQ-SRL module macro **82**
 - To determine how the Status flag is displayed **32**
 - To disconnect a user **42**
 - To disconnect from a target device **23**
 - To display version information **44**
 - To exit screen saver mode and log in to the local port **38**
 - To immediately turn on the screen saver **39**
 - To list target devices alphabetically by name **28**
 - To remove a target device from the scan list **36**
 - To remove a user from the DSR switch database **75**

- To rename a user in the DSR switch database **75**
- To reset the PS/2 mouse and keyboard values **43**
- To select target devices **22**
- To select the previous target device **23**
- To set a Screen Delay Time for the OSCAR interface **31**
- To set the keyboard country code for Sun servers **39**
- To set the Screen Saver options **38**
- To soft switch to a target device **23**
- To start the scan mode **36**
- To turn broadcasting off **34**
- To upgrade the DSR switch firmware using the Console menu **77**
- To upgrade the DSR switch firmware using the DSView software **77**
- To use History mode **83**
- To view current user connections **42**

R

- Rack mounting brackets **8**
- Reduce cable bulk **1**
- remove a user from the DSR switch database **75**
- rename a user in the DSR switch database **75**
- Requirements
 - Video Viewer **55**
- Reset Appliance **76**
- Reset Certificates **75**
- Reset PS/2 **41**
- Restore Factory Defaults **76**

S

- Safety Precautions **4**

- Scan
 - dialog box **35, 36**
 - Enable **37, 41**
 - mode **34, 36**
 - OSCAR interface **25**
- Screen Saver **25**
- Secure Mode **76**
- Sessions
 - Video Viewer session time-out **56**
- Setting up your network **6**
- Setup Dialog Box **26**
- Simple point and click access to any server **2**
- SPC devices
 - power controlling from the Video Viewer **54**
- SPC port **1, 9, 87**
- SPC power control device **1, 6, 8, 9, 87**
 - illustrated **7**
- STATUS LED **11**

T

- target devices
 - selecting **22**
- Technical Support **90**
- Terminal Applications menu **11, 80, 81, 82**
- Terminal Operations **55, 71**
- The DSR1021 Switch **3, 4**

U

- upgrade the DSR switch firmware **77**
- User Connections
 - Viewing and Disconnecting **42**
- User Status **41**
- User Status Dialog Box **42**
- Using Scan Mode **34**

V

Verifying the Connections **10**

Version Dialog Box **44**

Video Viewer

- about **55**

- adjusting color depth **61**

- adjusting mouse options **64**

- adjusting the view **60, 62**

- aligning the mouse **67**

- capturing a window **68**

- changing the window resolution **59**

- closing a session **69**

- enabling scaling types **61**

- enabling/disabling full screen mode **61**

- launching a KVM session **56**

- macros **68**

- minimum requirements **55**

- refreshing the screen **60**

- selecting the cursor type **65**

- session time-out **56**

- specifying a toolbar hide time **59**

- specifying scaling **66**

- using keyboard pass-through **67**

- window features **57**

Viewing User Connections **42**



Avocent®

The Power of Being There®

For Technical Support:

www.avocent.com/support

Avocent Corporation
4991 Corporate Drive
Huntsville, Alabama 35805-6201 USA
Tel: +1 256 430 4000
Fax: +1 256 430 4031

Avocent Asia Pacific
Singapore Branch Office
100 Tras Street, #15-01
Amara Corporate Tower
Singapore 079027
Tel: +656 227 3773
Fax: +656 223 9155

Avocent Canada
50 Mural Street, Unit 5
Richmond Hill, Ontario
L4B 1E4 Canada
Tel: +1 877 992 9239
Fax: +1 877 524 2985

Avocent International Ltd.
Avocent House, Shannon Free Zone
Shannon, County Clare, Ireland
Tel: +353 61 715 292
Fax: +353 61 471 871

Avocent Germany
Gottlieb-Daimler-Straße 2-4
D-33803 Steinhagen
Germany
Tel: +49 5204 9134 0
Fax: +49 5204 9134 99

