

ARTDio *Intelligent Communication*

SS-200

TRUE USB VoIP

(Voice Over Internet Protocol) SPEAKER

With Built-in Microphone & USB Hub

USER'S GUIDE



Please read and understand all safety instructions before use.

INDEX

Index	1	Uninstalling The Software	11
Product Features	2	Trouble Shooting	14
Product Overview	3	Frequently Asked	
Controls	4	Questions	18
Connection	4	Product Specifications	20
Installing The Software	6	Safety Instructions	22

PRODUCT FEATURES

The ARTDIO SS-200 VoIP Speaker is a full duplex mono speaker with built-in microphone, which designed for you to listen to music and enjoy conversations through the Internet with a hands free experience. DSP (Digital Sound Processing) with echo cancellation and noise suppression technology assures best voice clarity and quality for making calls through the Internet. The SS-200 speaker is truly USB powered, no additional adapters required. Just plug into the USB port on the computer, install the driver included, and start enjoying the special features.

Designed to support VoIP soft phones such as Skype™, and support the following functions: (installation CD-ROM includes the supporting features)

- Easy access Call Button on the speaker (make/ answer/ disconnect Skype call)
- Auto Music Pause and Resume function when music plays with Windows Media Player™ and Winamp™ for incoming/outgoing Skype calls.

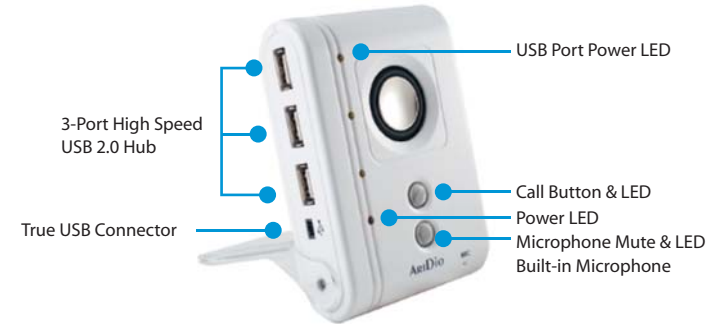
Designed to enhance Sound Effect provided by ArtDio USB 3D Sound software. (installation CD-ROM includes the supporting features)

The 3-ports High Speed USB 2.0 hub provides plug and play feature connectivity that allows additional connection of up to three USB peripherals or devices, such as USB flash drive, MP3 players, web cameras, card reader, USB mouse, or external hard drive with additional power supply.

* All trademarks are registered trademarks of their respective companies in the United States and/ or other countries.

PRODUCT OVERVIEW

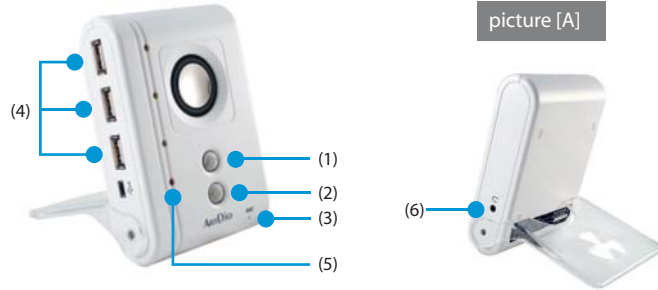
FRONT VIEW



BACK VIEW



CONTROLS (please refer to picture [A])



(1) Call Button & LED (support Skype only)

Make a Call: Press to make an outgoing call.
 Answer a Call: Press to answer an incoming call.
 Disconnect a Call: Press to disconnect a call.
 Green LED will flash when a call is ringing, it will light when the call is connected.

(2) Microphone Mute & LED

Press to mute the microphone, the blue LED will light.

(3) Built-in Microphone

Talk directly with the built-in microphone on the speaker to enjoy your conversation hands free.

(4) 3-Port High Speed 2.0 Hub & LED

Provides connectivity of up to 3 USB peripherals and devices simultaneously. The total power input for the USB Hub is 5V DC, maximum 600mA. Orange LED will flash when a USB device is connecting to the USB port, it will light when the USB device is powered and ready to use.

NOTE: When the SS-200 speaker is connected to the computer, do not connect additional USB audio devices such as ArtDio's SS-168 or SS-100, and any other USB audio devices to the computer.

(5) Power LED

Red LED will light to indicate the speaker is connected properly to the computer, powered and ready for use.

(6) 2.5mm Headphone Jack

Connect to headphone with 2.5mm connector for private conversation.

Note: A mono headphone with built-in microphone is included.

CONNECTION

1. Connect the mini USB connector to the mini USB jack located on the bottom left panel of the speaker.
2. Plug in the USB cable from the speaker to the USB-port on your computer.
3. The red LED will light to indicate the power for SS-200 speaker is on.
4. Flip the speaker stand all the way to the back of the speaker, and place it on a flat sturdy surface to stand.



INSTALLING THE SOFTWARE

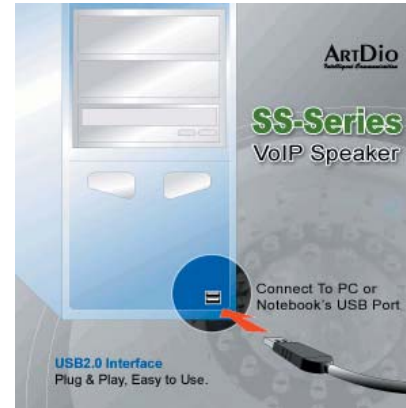
Note: You must connect the SS-200 speaker to your computer before installing the software.

1. Place the installation CD-ROM into the CD-ROM drive on your computer.
2. The setup program will start automatically; if the auto run does not start, please install manually by double-click on the setup (.exe) file on the CD-ROM drive.
3. Please follow the instructions in the setup program to complete the installation.

INSTALLATION SCREENSHOTS



- 1) Please wait while the setup extracts the files needed to be installed, SSCtrl Driver.



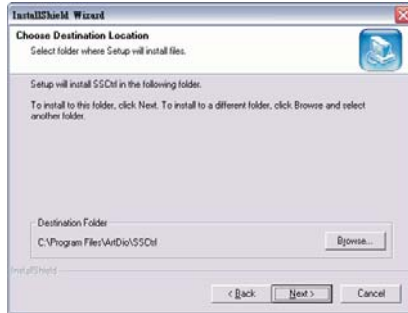
- 2) Note: Please connect the SS-200 speaker to your computer before continue the setup.



- 3) Please wait while the setup prepares the installation for SSCtrl driver, which will guide you through the rest of the setup process.

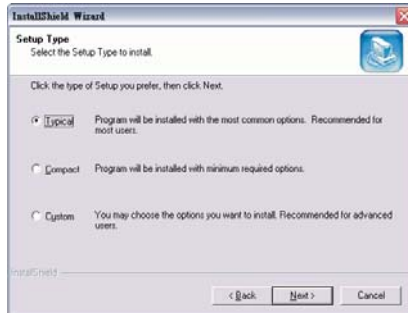


- 4) Click "Next" to continue the setup.



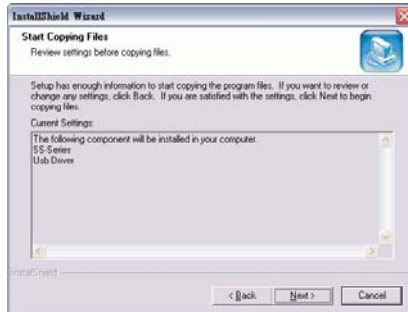
5) Select or create a folder to install the SSCtrl driver, or the setup will install in the following folder C:/Program Files/ ArtDio/ SSCtrl

Click "Next" to continue the setup.

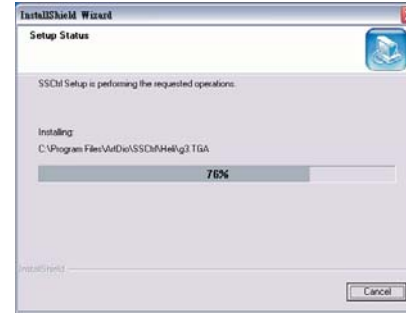


6) Select the installation method as shown in the screenshot. Choose "Typical" as recommended for the installation.

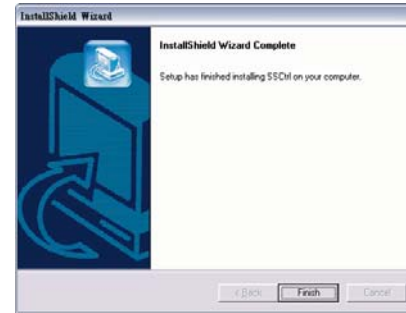
Click "Next" to continue the setup.



7) Click "Next" to begin installation, or "Back" to change any settings.



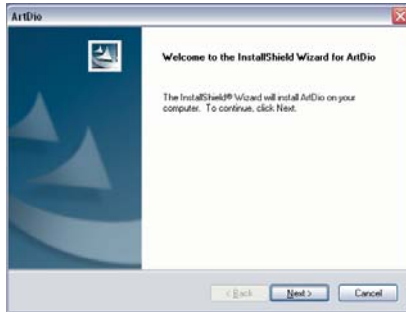
8) The installation for SSCtrl driver begins.



9) The installation for SSCtrl driver is completed.

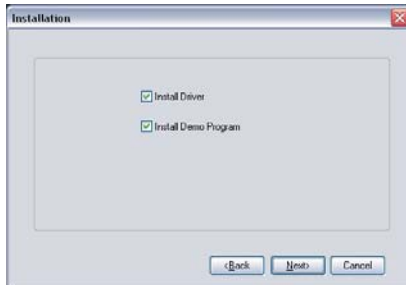


10) Please wait while the setup prepares the installation for ArtDio USB Driver, which will guide you through the rest of the setup.



11) Then, continue with the installation for ArtDio USB driver.

Click "Next" to continue the setup.



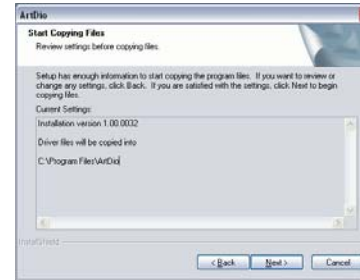
12) Select the items to be installed in your computer, including
 Install ArtDio Driver
 Install Demo Program

Click "Next" to continue the setup.



13) Select or create a folder to install ArtDio USB Driver, or the setup will install in the following folder C:\Program Files\ArtDio

Click "Next" to continue the setup.



14) Click "Next" to continue the setup, or "Back" to change any settings.



15) The installation for ArtDio USB driver begins.



16) The installation for ArtDio USB driver is completed.

Please "Restart" you computer when the installation is completed.



17) After restarting the computer, click on Skype to execute the program. A window will pop-up to ask for permission for the installed SSctrl driver to access Skype.

Click on "Allow this program to use Skype," to allow the SS-Ctrl driver and the SS-200 VoIP speaker to operate with Skype.

Please always visit our website at www.artdio.net to check out and download the latest software and user's guide.

UNINSTALLING THE SOFTWARE

Note: Please exit all programs before uninstalling the software.

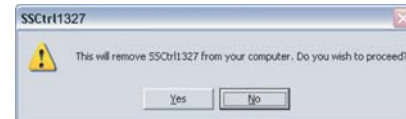
UNINSTALLING SS-CTRL DRIVER

Please follow the on-screen instructions to uninstall the software.

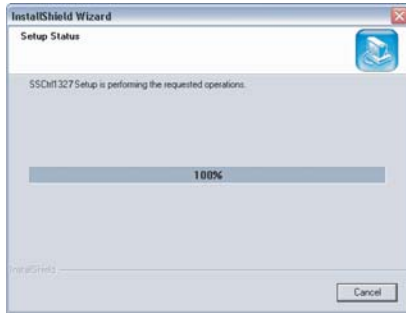
UNINSTALLATION SCREENSHOTS



1) Go to Windows Start> All Programs>ArtDio, click on "uninst" to uninstall the SSctrl driver.



2) Click "Yes" to continue uninstallation, click "No" to cancel.



3) The uninstallation for SSCtrl driver begins.



4) The SSCtrl driver has been successfully uninstalled.

Please "Restart" your computer after the software is uninstalled.

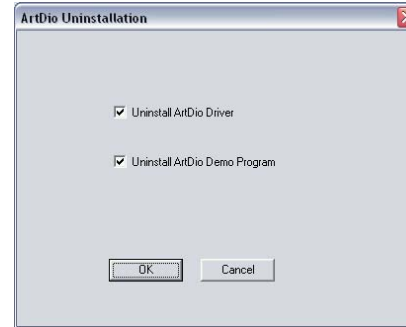
UNINSTALLING ARTDIO USB DRIVER

Please follow the on-screen instructions to uninstall the software.

UNINSTALLATION SCREENSHOTS



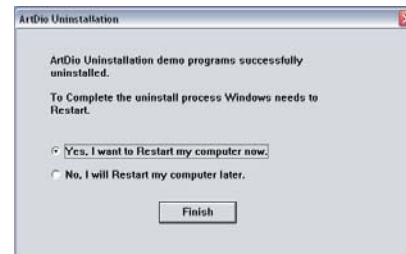
1) Go to Windows Start>All Programs> ArtDio> USB Driver, click on "Uninstall ArtDio" to uninstall the ArtDio USB driver.



2) Click "OK" to continue the uninstallation.



3) The uninstallation for ArtDio USB driver begins.

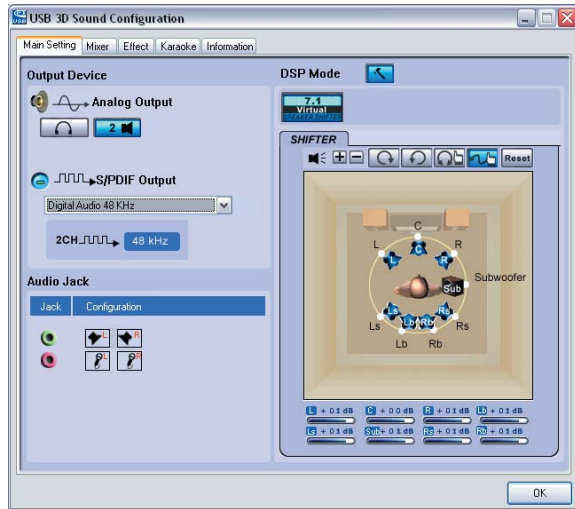


4) The ArtDio USB driver has been successfully uninstalled.

Please "Restart" your computer after the software is uninstalled.

ARTDIO USB 3D SOUND CONFIGURATION SETTINGS

[1] MAIN SETTING



Output Device

Analog Output : Select the appropriate audio output device, such as Headphone "■" and Speaker "⌂".

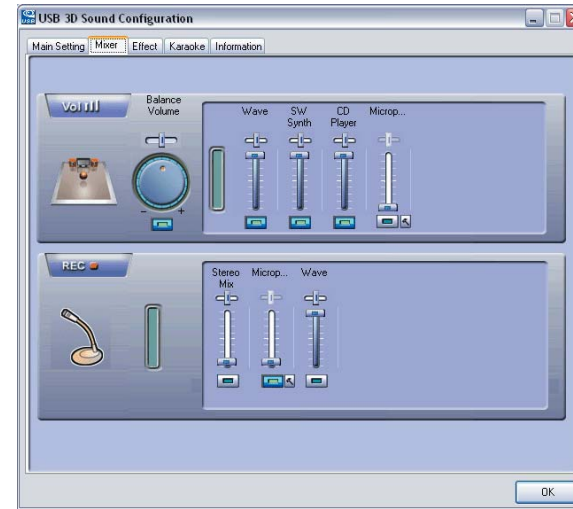
S/PDIF Output : Select S/PDIF for digital audio output settings.

Audio Jack : Audio output jack "●" (green) for speaker, and audio input jack "●" (red) for microphone.

DSP (Digital Sound Processing) Mode : Use the settings below to change the DSP mode.

- 1) Click on 7.1 Virtual Speaker Shifter button
- 2) Select to change the 7.1 virtual speaker system settings.
- 3) Use the Volume Control to adjust the volume.
- 4) Click on "▶" to test the 7.1 virtual speaker settings, or "■" to stop.

[2] MIXER

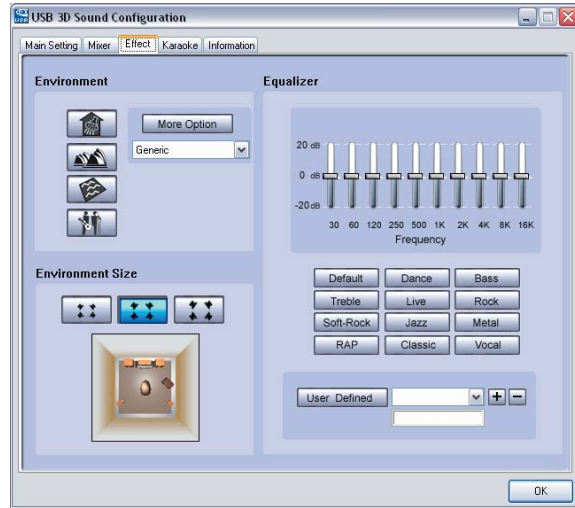


Audio Settings

Vol "▮": Use the Volume Control to increase or decrease the volume, drag the Balance slider to change the balance between left and right speakers.

Rec "●": Use the Volume Control to adjust the recording volume.

[3] EFFECT

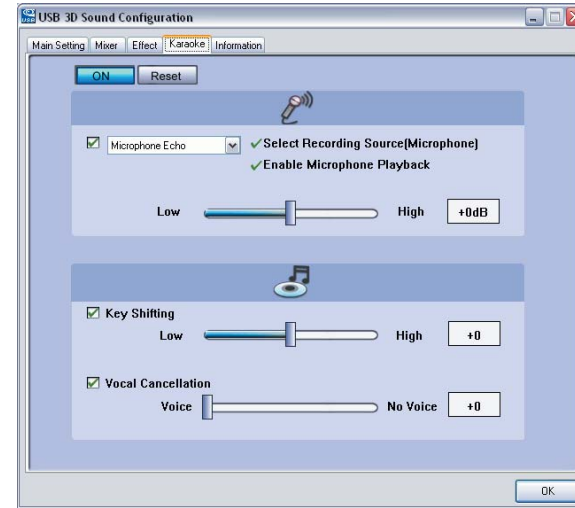


Environment : Choose from the icon on the left menu or more options from the drop-down menu to select the appropriate environment setting for best audio performance.

Environment Size : Select the appropriate environment size for best audio performance.

Equalizer : Use the Equalizer to tune for audio sound effects according to your own preferences.

[4] KARAOKE

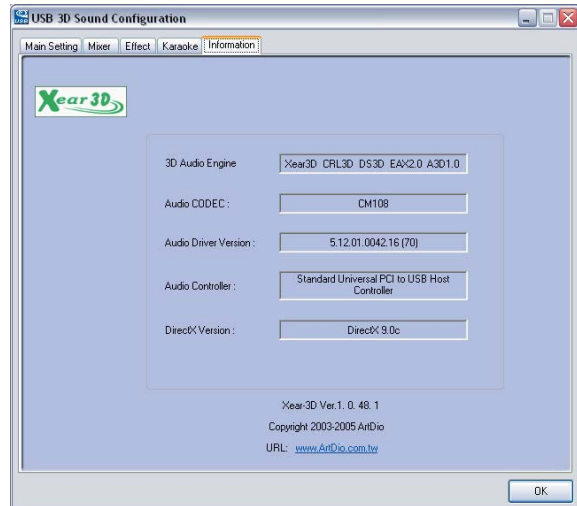


Microphone Echo : Use the Microphone Echo slider to increase or decrease microphone echo.

Key Shifting : Use the Key Shifting slider to increase or decrease key shifting settings.

Vocal Cancellation : Use the Vocal Cancellation slider to adjust vocal cancellation settings.

[5]INFORMATION



Display the information for ArtDio USB 3D Sound software.

TROUBLE SHOOTING

No.	Symptom	Possible Problem	Solutions
1	No LED (Red) is lit.	The USB cable isn't connected or it is loosened.	Reconnect the USB cable to the speaker and plug it into the USB port on the computer.

TROUBLE SHOOTING

No.	Symptom	Possible Problem	Solutions
		The USB driver is not functioning.	Download the USB driver from your computer manufacturer's website, or install the software CD-ROM included.
2	No sound is coming from speakers.	The power isn't turned on.	Repeat the step 1 - No power LED is lit.
		The computer doesn't detect C-Media USB Sound Device as Sound and Audio Device.	Go to control panel, double click on Sound and Audio Devices, under the Volume Output/ Input control, choose C-Media USB Sound Device.
		The operating system's volume is set too low.	Check the operating system volume level and increase it if necessary.
3	There is echo sound coming from speakers when the music is playing or while making phone calls.	The software CD- ROM is not installed.	Follow the steps for installing the software.
		The Karaoke function in the settings for USB 3D Sound Configuration, is turned on.	Double click on USB 3D Sound Configuration icon on the system task bar, go to Karaoke tab, turn off the Karaoke function and make sure the On button is not highlighted.

TROUBLE SHOOTING (con't)

No.	Symptom	Possible Problem	Solutions	No.	Symptom	Possible Problem	Solutions		
4	The Call Button on the speaker does not function.	The operating system's volume is set too high.	Check the operating system volume level and decrease it if necessary.	7	When 2 parties are talking over the internet phone call, the Call Button on the speaker doesn't answer the 3rd party incoming call. (with Skype™)	The Call Button on the speaker does not support to answer 3rd party incoming call.	Please use the mouse and click directly on the Answer Call button on the program to answer 3rd party incoming call. (with Skype™)		
		The software CD-ROM is not installed.	Follow the steps for installing the software.	8				Windows stop responding when connecting the speaker to the computer while the music is playing or while making internet phone calls.	The speaker is connected while the music is playing or while making internet phone calls.
5	Voice is breaking up while talking through the Internet.	The VoIP soft phone program used is not Skype™.	The Call Button only supports Skype™ currently.	9	Once you connected the speaker and run Windows Media Player™, it doesn't play the music.	Windows Media Player™ is executed under "skin mode" view.	Please exit and restart Windows Media Player™ again.		
		Internet is busy or poor bandwidth quality.	Please consult with your Internet Service Provider.					10	The speaker cannot control Spiderphone™ applications.
6	Music doesn't stop automatically for incoming and/or outgoing calls.	Too far from the speaker.	Be in the range of 2-5 feet from the speaker for best performance.	10	The speaker cannot control Spiderphone™ applications.	The speaker driver is not select to control Spiderphone.	Right click on SSCtrl icon on the system task bar, and click on "Default Spider" to choose to control Spiderphone applications.		
		The software CD- ROM is not installed.	Follow the steps for installing the software.					The media players used is not Windows Media Player™ or Winamp™.	The Auto Music Pause and Resume feature only support Windows Media Player™ or Winamp™ currently.
		The USB cable is loosened.	Reconnect the USB cable to the speaker and plug it into the USB port on the computer.						

FREQUENTLY ASKED QUESTIONS

1. Does the SS-200 VoIP speaker support instant messengers such as MSN Messenger, Yahoo Messenger, QQ and more, other than Skype™?

- ▶ Yes, the SS-200 VoIP speaker works just like any multimedia speaker to support instant messengers as stated above and more, for you to talk to friends and family through the Internet and listen to music.

2. Why there is no power on/ off button on SS-200 VoIP speaker?

- ▶ The SS-200 VoIP speaker is powered by USB. When the USB cable is fully connected to the USB port as the computer is turned on, the power for the SS-200 VoIP speaker is turned on and the red LED will light.

The SS-200 speaker is powered off at the below stages:

- Before the computer start-up is ready.
- Before the computer enters the operating system and be ready to use.
- When the computer is standing by, hibernated or turned off.
- When the SS-200 VoIP Speaker is unplugged from the computer.

3. There is a 2.5mm mono headphone jack on the SS-200 speaker, can I connect with any multimedia headphones?

- ▶ The mono headphone jack on SS-200 VoIP speaker is able to connect with any headphones with a 2.5mm connector, which is mostly compatible with cell

phones. Included with the package, is a specially designed 2.5mm mono headphone with built-in microphone, for you to use it to listen to music and enjoy your conversation through the Internet.

4. Does the feature of auto music pause and resume for incoming/ outgoing calls support Mac or Linux operating system?

- ▶ No, the software included only supports with Windows operating systems currently , and does not support Mac or Linux operating systems.

5. Why after uninstalling the software, the SS-200 VoIP speaker still support the function of Auto Music Pause and Resume for incoming/ outgoing call?

- ▶ Possible Problem:
 - a) The users did not exit SS-series program before uninstalling the software, therefore, the uninstalling program only remove the related documents in the system but did not remove the function.
 - Please close and exit the SS-series program before uninstalling the software
 - b) The users did not restart the computer after the software is uninstalled.
 - Please restart the computer after the software is uninstalled.

SPEAKER SPECIFICATIONS

Built-in Speaker	Total Power Output	2Watts
	Frequency Response	120HZ-18KHZ
	Driver	1 1/4 inches 4Ω NdFEB Magnet
Built-in Microphone	Coverage	5 M (±60 degree)
	Sensitivity	-40dB
	Frequency Response	50HZ-10KHz
Digital Sound Processing	Echo Cancellation	Support
	Noise Suppression	13dB
	Microphone Auto Volume Control	Support
	Full Duplex Satellite	Support
Audio Output	Max Output Power	100mW
Function Keys/ LED Indicator	Call Button	Make/ Answer/ Disconnect a Call
	Microphone Mute	Support
	Power LED	Red LED will light to indicate the power is on
	Call LED	Green LED will flash for

			incoming/outgoing call, green LED will light when the call is connected
		USB Hub Power LED	Orange LED will light when the USB storage device is connected to the USB port
	Other	Headphone Input Connection	2.5mm Mono Headphone Input Jack
	Connection Type	USB - Audio Support	USB 2.0
	Physical Outlook	Dimensions	W1.33" (11cm) x H3.11" (7.9cm) x D1.26" (3.2cm)
		Weight	0.30 lbs (0.135kg)
	Compatible Operating Systems	Windows 2000/ XP & Windows Server 2003	
	Accessories Included	Installation Software CD-ROM Mono Headset with Microphone Quick installation Guide USB cable	

SOFTWARE SPECIFICATIONS

•SS-series Driver and Utility •Control Utility •C-Media™ USB Sound

USB HUB SPECIFICATIONS

USB Host Interface	USB 2.0 (backward compatibility with USB 1.1 and 1.0)
USB Ports	3 USB ports *Do not connect ArtDio's SS-168, SS-100 or any other USB audio device to the USB port when the SS-200 is connected to the computer.
Data Transfer Rate	Up to 480 Mbps
Input Voltage	5V DC (1 port supports 5V DC,500mA; 3 ports support up to maximum 600mA)
USB Port Status LED	Orange LED will light when the USB peripherals or devices is connected and powered.

IMPORTANT SAFETY INSTRUCTIONS

Please read and understand all safety instructions before use.

1. Read Instructions – All the safety and operating instructions should be read before the appliance is operated.
2. Retain Instructions – The operating instructions should be retained for future reference.
3. Heed Warning – All warnings on the appliance and in the operating instructions should be adhered to.
4. Follow Instructions – All operating and use instructions should be followed.
5. Water and Moisture – The appliance should not be used near water – for example, near a bathtub, washbowl, kitchen sink, laundry tub, in a wet basement, or near a swimming pool, etc.
6. Outdoor Use – Warning: To reduce the risk of fire or electric shock, do not expose this appliance to rain or moisture.

7. Location – The appliance should be installed in a stable location.
8. Heat – The appliance should be situated away from heat sources such as radiators, heat registers, stoves, or other appliances (including amplifiers) that produce heat.
9. Cleaning – The appliance should be cleaned only with a polishing cloth or a soft dry cloth. Never clean with furniture wax, benzene, insecticides or other volatile liquids since they may corrode the cabinet.
10. Object and Liquid Entry – Care should be taken so that objects do not fall and liquids are not spilled into the enclosure through openings.
11. Accessories – Only use attachment accessories specified by ArtDio Co, Inc.
12. Damage Requiring Service – The appliance should be serviced by qualified service personnel when:
 - Objects have fallen, or liquid has been spilled into the appliance.
 - The appliance has been exposed to rain.
 - The appliance does not appear to operate normally or exhibits a marked change in performance.
 - The appliance has been dropped or the enclosure damaged.
13. Servicing – The user should not attempt to service the appliance. Servicing should be referred to qualified service personnel or returned to the dealer or call the ArtDio service line for assistance.



WARNING TO REDUCE THE RISK OF FIRE OR ELECTRIC SHOCK, DO NOT EXPOSE THIS APPLIANCE TO RAIN OR MOISTURE.

CAUTION PILOT LAMP SOLDERED IN PLACE. TO REDUCE THE RISK OF ELECTRIC SHOCK, REFER TO QUALIFIED SERVICE PERSONNEL.



The exclamation point within an equilateral triangle is intended to alert the user to the presence of important operating and maintenance (servicing) instructions in the literature accompanying the appliance.



The lightning flash with arrowhead symbol with an equilateral triangle is intended to alert the user to the presence of uninsulated dangerous voltage within the product's enclosure that may be of sufficient magnitude to constitute a risk of electric shock to persons.