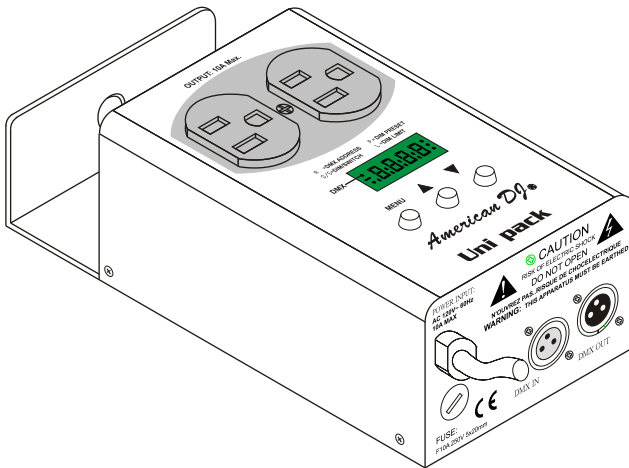


American DJ®

Uni pack

USER'S MANUAL



Please read before use

English

Contents

Features 1

General Instructions 2

1. Overview 3

1.1 Front Panel 3

1.2 Rear Panel 4

2. Operation Guide 5

2.1 DMX Address Mode 5

2.2 Switch Pack Mode 6

2.3 Dimmer Pack Mode 7

Technical Specifications 10

American DJ®

Uni pack

Improvement and changes to this manual, specifications and design, may be made at any time without prior notice.

ALL RIGHTS RESERVED.

American DJ®

Los Angeles, CA 90058 USA

Features

Thank you for purchasing this American DJ product.

This Unit Pack features include:

- 3-pin standard DMX IN/OUT ports providing dimmer information
- Serves as a Switch Pack or Dimmer Pack, depending upon the current operating mode.
- Allows DMX Addressing, Dimmer Preset and Dimmer Limit.
- Power failure memory.
- 4 digits Segment Display shows current activity and function state.

Every effort has been made to design dependability, reliability and comfort into each unit. New products are being designed constantly to meet the needs of both entertainment and the lighting industry. We welcome your comments about our product and services.

It is both a privilege and a pleasure serving you.

General Instructions

Please read through this operating instructions before installing or using your new product. After you have finished reading the instructions, put them away in a safe place for future reference.

Safe and Efficient Use

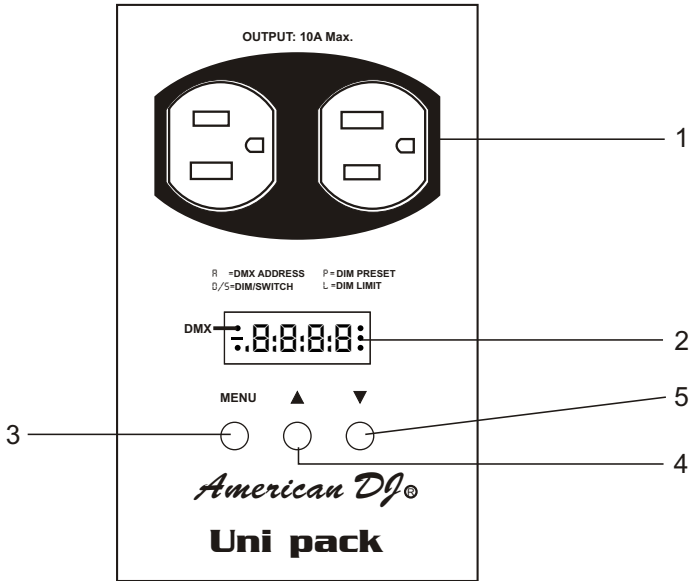
- This product must be earthed.
- Do not make any inflammable liquids, water or metal objects enter the unit.
- Take care not to damage the power cord.
- No user serviceable parts inside, always consult authorized personnel for repairs.
- In the event of a malfunction(burning smell, etc.), immediately stop operation, disconnect the power supply plug, and consult authorized service personnel.
- To prevent fire or shock hazard, do not expose this product to rain or moisture.

Product Care

- This product is intended for indoor use only.
- Provide occasional ventilation during use.
- Unplug the power plug from the sockets when not using the unit for extended period.
- Do not use the unit in places subject to excessive humidity, vibration or bumps.
- Place this unit in a stable location.
- Do not dismantle or modify the unit.

1. Overview

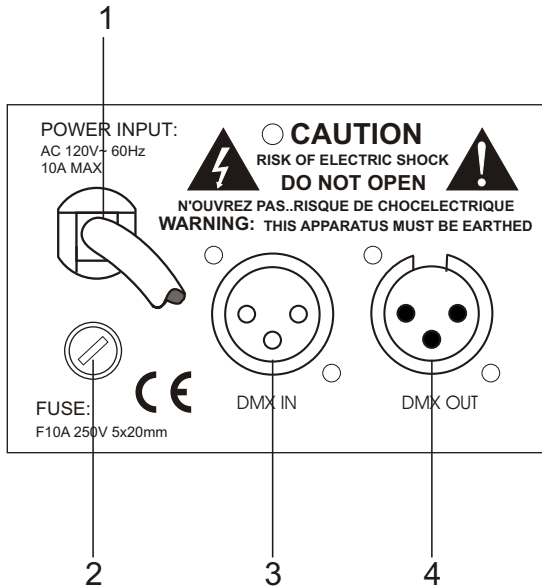
1.1 Front Panel



- | | |
|---------------------|--|
| 1. Output: | 6 A max. |
| 2. Segment Display: | Shows current activity or function state. |
| 3. Menu button: | Press to enter next level. |
| 4. Up button: | Each tap will increase the value once.
Pressing and holding down will increase quickly. |
| 5. Down button: | Each tap will decrease the value once.
Pressing and holding down will decrease quickly. |

1. Overview

1.2 Rear Panel



- | | |
|----------------|--|
| 1. Power Cord: | Plug in the appropriate power outlet. |
| 2. Fuse: | F10A 250V 5x20mm |
| 3. DMX In | 3-pin XLR male socket, used to receive DMX data. |
| 4. DMX Out | 3-pin XLR female socket, used to send DMX data. |

2. Operation Guide

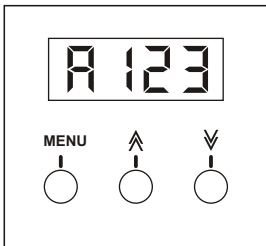
General

Plug in the appropriate power outlet, this unit recovers to the function state of last time automatically by reasons of power failure memory, and the Segment Display shows the DMX address of last change.

If the frequency of power is not stable, the Segment Display will show "AC-0", wait until the power is stable.

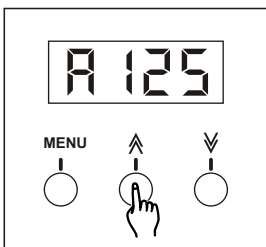
The UP-1 serves as a dimmer pack or a switch pack, depending on operating mode you've selected.

2.1 DMX Address Mode



1. The Segment Display shows the DMX address of last change when powered this unit.

If you've selected DMX address 123 for the last time, then the Segment Display will read 123.



2. Each tap of the Up or Down button will change the DMX address once. Pressing and holding down will change the DMX address quickly.

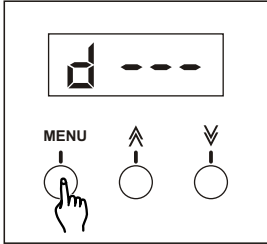
Once the DMX address is selected, it will be stored into memory automatically.

NOTE:

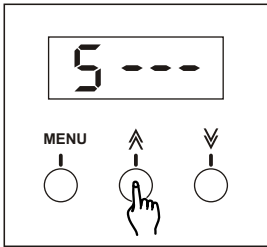
During DMX addressing, output is disabled.

2. Operation Guide

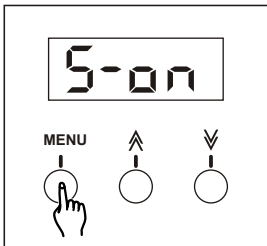
2.2 Switch Pack Mode



1. When DMX address is complete, Press Menu button to enter next level.



2. Tap the Up or Down button causing the Segment Display shows "S---".



3. Press Menu button to enter Switch Pack mode.

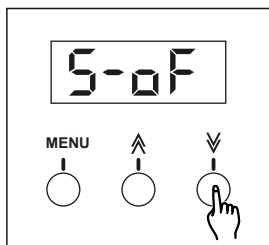
Switch Pack mode consists of Switch On(S-on) and Switch Off(S-of).

In the Switch On mode, output is turned on and the fixture lights regardless of DMX signal.

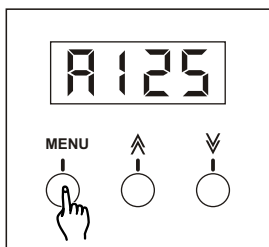
In the Switch Off mode, output is turned off and the fixture is controlled by DMX signal. When DMX level is less than 40%, the fixture goes out; when DMX level exceeds 40%, the fixture lights.

2. Operation Guide

2.2 Switch Pack Mode

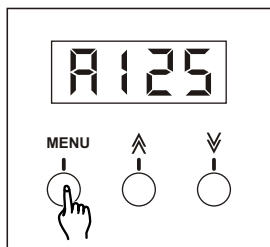


4. Tap the Up or Down button to change between Switch On and Switch Off.



5. Once the Switch Pack is selected, press Menu button to return to DMX Address mode.

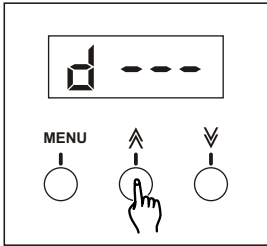
2.3 Dimmer Pack Mode



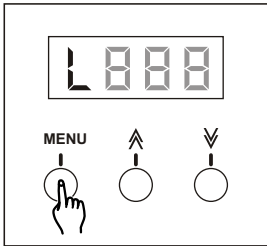
1. Press Menu button to enter next level.

2. Operation Guide

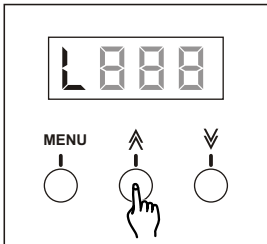
2.3 Dimmer Pack



2. Tap the Up or Down button causing the Segment Display shows "d---".

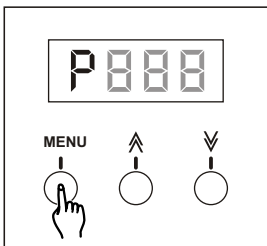


3. Press Menu button to enter Dimmer Limit mode.



4. Tap the Up or Down button to change the value within the range of 30-100. Each tap will change the value once, pressing and holding down will change the value quickly.

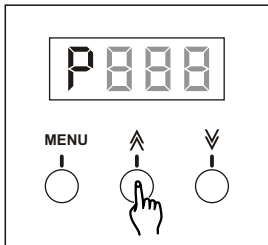
Once the Dimmer Limit is selected, it will be stored automatically.



5. Press Menu button to enter Dimmer Preset mode.

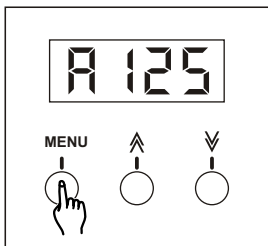
2. Operation Guide

2.3 Dimmer Pack Mode



4. Tap the Up or Down button to change the value within the range of 00-100. Each tap will change the value once, pressing and holding down will change the value quickly.

Once the Dimmer Preset is selected, it will be stored automatically.



5. Press Menu button to return to DMX Address mode.

Technical Specifications

Power Input AC 120V~60Hz, 10 A max.

Channel Output 10 A max.

DMX OUT 3-pin XLR female socket

DMX IN 3-pin XLR male socket

Fuse F10A 250V 5x20mm

Dimensions 182x92x65mm

Weight 1.1 Kg



American DJ®

ALL RIGHTS RESERVED

Rev 1.0 Jun., 2000

24-004-0348