



Experience the digital imaging advantage™

Ambir Scanner User Guide

PS467

Ultra compact, portable simplex document & ID card scanner



CE Conformity and FCC Statement

CE This equipment has been tested and found to comply with the limits of the European Council Directive on the approximation of the member states relating to electromagnetic compatibility according to EN 55022/55024 Part 15 B.

FCC This equipment has been tested and found to comply with the limits for a Class B digital device, pursuant to Part 15 of the FCC Rules. These limits are designed to provide reasonable protection against harmful interference in a residential energy and, if not installed and used in accordance with the instructions, may cause harmful interference to radio communications. However, there is no guarantee that interference will not occur in a particular installation. If this equipment does cause harmful interference to radio or television reception, which can be determined by turning the equipment off and on, the user is encouraged to try to correct the interference by one or more of the following measures:

- Reorient the receiving antenna
- Increase the separation between the equipment and receiver
- Move the computer away from the receiver
- Connect the equipment into an outlet on a circuit different from that to which the receiver is connected

Trademarks

Windows, Windows Me, 2000, XP, Vista, 7 and Microsoft are the registered trademarks of Microsoft Corporation. Adobe Acrobat and AmbirScan are registered trademarks or trademarks of Adobe Systems Incorporated and Ambir Technology, Inc. in the United States and/or other countries.

Package Contents:

Ambir Scanner

USB 2.0 Cable

Carrying Case

2 Photo/Document Sleeves

1 Cleaning Sheet

2 Calibration Sheets

Installation CD

User Guide (printable from CD)

Quick Start Guide

Contents

| | |
|--|----|
| CE Conformity and FCC Statement..... | 1 |
| Welcome | 2 |
| Installation of Software & Hardware | 3 |
| Initial Calibration with AmbirScan® 2.0..... | 7 |
| Using Your Scanner | 9 |
| Tips & Cautions..... | 11 |
| Technical Support | 12 |
| Product Warranty Information..... | 12 |

Welcome.....

Thank you for purchasing an Ambir scanner. We have designed this product to provide the user with a simple but effective tool to capture, manage and archive documents of many types. We encourage you to read this short, but important User Guide carefully.

Your Ambir scanner has the latest technology and compatible drivers. These drivers have been tested to be in compliance with Windows® 2000 (SP4), Windows XP (SP2), Windows Vista®, and Windows 7 operating systems. We also feature a TWAIN 1.9 compatible driver that will work with thousands of imaging applications. If you experience any difficulty with these drivers, please check our website at www.ambir.com to verify you are using the latest version.

Installation of Software & Hardware

FOR BEST RESULTS PLEASE INSTALL THE SOFTWARE FROM THE CD PROVIDED BEFORE PLUGGING IN YOUR SCANNER.

Note:

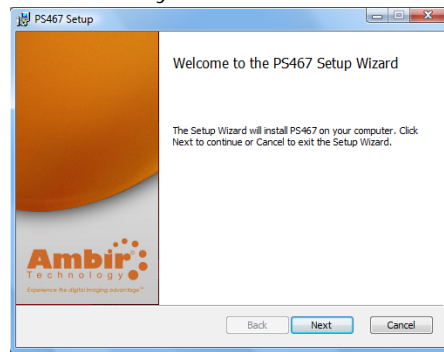
As a precaution, a RED warning label has been placed over the large end of the USB plug to remind you to install the software from the CD first. Please remove this warning label prior to plugging in the scanner cable.

◆ *STEP 1- Install Software*

Driver Installation

a) Insert the installation CD that came with your Ambir scanner.

The installation program will begin automatically.



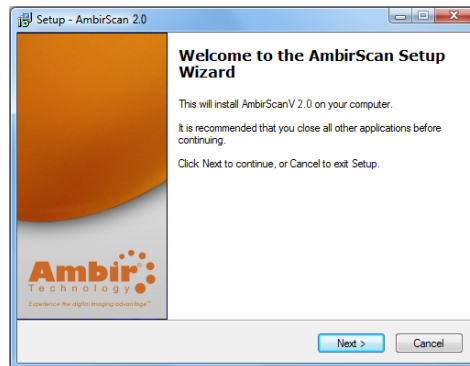
b) In Windows XP, if your CD does not start automatically, please double-click the MY COMPUTER icon on your Windows desktop, then double-click the CD icon. In Windows Vista, click **Start → Computer**, then double-click the CD icon. If the installation program does not begin, double-click the SETUP icon.

c) Click the Install Scanner Driver button to begin installation. Follow the on screen step-by-step instructions. Choose the "Complete" Setup Type option (see below).

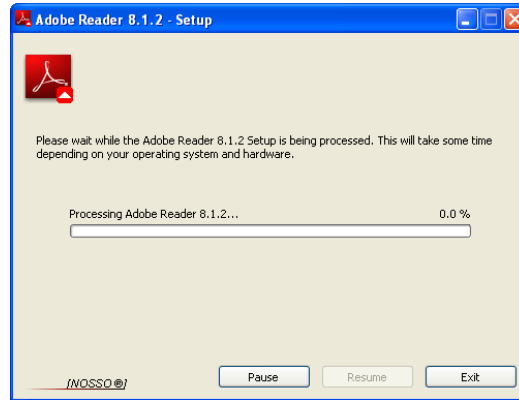


AmbirScan Installation

d) Click "Install AmbirScan" on the CD menu screen. Follow the on screen step-by-step InstallShield Wizard instructions to install the AmbirScan 2.0 software.



e) If you do not already have Adobe Reader installed, you should select the "Install Adobe Reader" button on the CD menu. You may also print out the User Guide after installing the Adobe Reader for your future reference. If you choose to install Adobe Reader, you will see the screen below. Please follow the instructions to install the software.



Note:

After you have completed all software installations, we strongly recommend you restart your computer even if you are not prompted by Windows to do so.

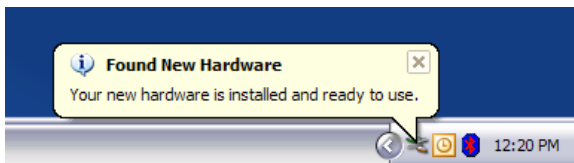
Uninstalling Software/Hardware

f) To remove your scanner, AmbirScan 2.0 or the Adobe program you need to go to **Start → Control Panel → Add or Remove Programs** (Windows XP) or **Start → Control Panel → Programs & Features** (Windows Vista). To remove a scanner, you will have to select it from the list of programs. Make sure the scanner is connected to your computer when performing the uninstall function.

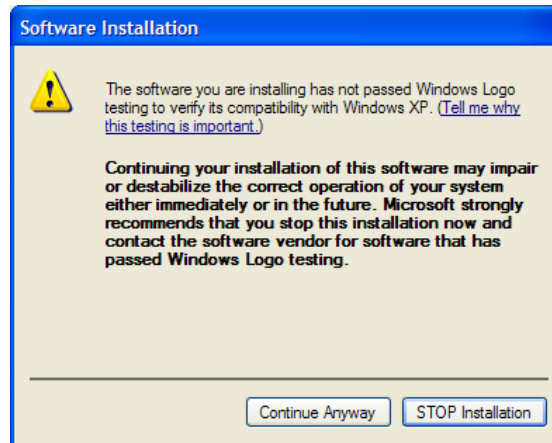
◆ *STEP 2- Install Hardware*

After you have installed the software and restarted your computer:

- a) Connect the USB cable from the scanner to the USB port on your computer as shown below. If necessary, please check your computer's user guide to identify the USB ports available and their locations.



- b) Under Windows XP, Vista, and Windows 7 operating system, the computer will automatically detect the new hardware device and install the driver. (See above)
- c) Under Windows 2000, ME, and 98SE you may be required to browse to the installation CD where Windows will retrieve additional driver components to complete the installation. Follow the step-by-step Found New Hardware Wizard installation instructions and finish your installation. (See above)



d) Users with Windows 2000, ME, and 98SE operating systems may see the “Windows Logo” compatibility warning screen when installing the driver/hardware. We assure you that your scanner has been fully tested and is compatible with these systems. Simply click the “Continue Anyway” button and proceed with the final installation.

Initial Calibration with AmbirScan 2.0

Note:

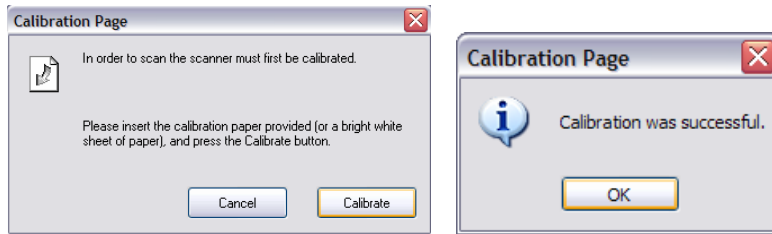
Calibration is a critical step in setting up your scanner. It allows the image quality to be “balanced” for your computer and scanner combination. If at any time you switch the computer that you use with your scanner, or change scanners, you will be required to calibrate again.

Launch AmbirScan 2.0 to begin.

- a) To open the AmbirScan 2.0 application double-click the AmbirScan 2.0 shortcut icon on your desktop.



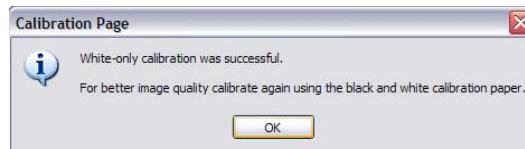
- b) Once you have launched AmbirScan 2.0, select the SCAN button and the step-by-step calibration instructions will appear in a succession of prompts.



This calibration process will require the special black and white calibration sheet that was included with your scanner. When calibrating, make sure the page with the black bars are facing down and note the direction of the arrows for proper insertion. When the calibration process has been completed successfully, you will see the message above; otherwise you would need to re-calibrate.

If you switch scanners or your image quality has become unsatisfactory, you can first clean your scanner with the provided cleaning sheet, and then re-calibrate your scanner. To calibrate the scanner simply click the Custom button in the AmbirScan 2.0 window and select Calibrate.

Should you lose the calibration paper that was included with your scanner, you can simply use any plain "white" (the brighter the "white" the better) piece of letter size printer paper and cut it to a dimension of (4 1/8 x 7 1/4) to perform the calibration. The following message will be displayed.



Using your Scanner

There are two easy ways for you to scan and manage your documents and images with your Ambir scanner.

- 1) The first is by utilizing the AmbirScan 2.0 control panel (Figure 1) that allows you to select from the most common paper sizes, image settings and basic file output information (location & name of your document). These files can be saved in multiple file formats. If you need to scan multi-page documents please select PDF format.
- 2) The second way is through the TWAIN user interface, which you can find by pressing the Custom button on the AmbirScan 2.0 control panel. The TWAIN user interface (Figure 2) allows you to control all details and settings of the scanner. This type of “fine-tuning” of your scans may be required for some of your document needs.

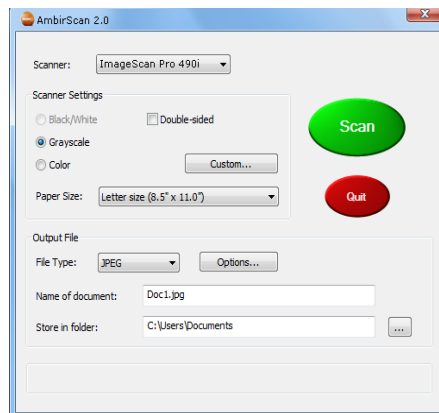


Figure 1

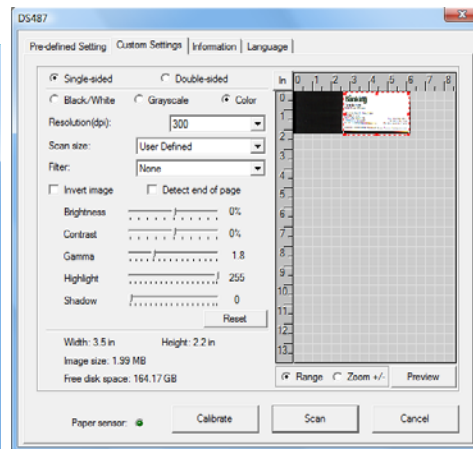


Figure 2

- When scanning documents make sure the image side to be captured is inserted face down.
- Notice the Page Tabs at the top of the TWAIN user interface; they are: **Custom Settings**, **Information**, and **Language**. Take a moment to explore these tabs and their function:
 - The **Custom Settings Tab** allows you to change the settings to the detailed specifications that you feel are required. You can

adjust the Mode, Resolution, Filter (None or De-screen) together with scanning size. You can also adjust the Brightness, Contrast, Color (Gamma), Highlight and Shadow of the image with the five slider-bar controls. In case you forget the original settings of these slider-bar controls, you can click the **Reset** button, which restores these settings to the scanner default settings. Once your settings are defined, select either **Preview** button to take a quick look at how your image will look in the scanning window or you can press **Scan** to perform final scanning.

- o The **Information Tab** provides important information regarding the software driver version. This may be required if you want to know if the software you are using is the latest version.
- o The **Language Tab** allows you to change the language of the tabs and menus in the TWAIN interface.

Using an Ambir Scanner with other application programs

Your Ambir scanner is fully TWAIN compliant, so you can use it with literally thousands of applications that use TWAIN device input. From desktop publishing and games, to faxing and business card scanning, you will discover many useful applications for your scanner. Simply select the scanner source from your program's "source" options and look for your Ambir scanner in the list. Sometimes these "source" scanner options may be found under TWAIN devices available.

Tips & Cautions

Your Ambir Scanner will provide you with productive service for a long time. We encourage you to follow the suggestions below to prolong your investment and improve the convenience and quality of your scanning and document management experience.

- Please do not introduce stapled items or pages into your Ambir scanner.
- Please do not scan documents that have chipped or wet White-Out.
- Please do not insert any type of adhesive material, including POST-IT paper.



- Make sure the leading edge of your documents are very straight (not wrinkled or folded) and are inserted level to the intake slot. If your document has a fold, sharp-bend or is wrinkled, please use the document sleeve included in the scanner package.
- Clean the scanner with the included cleaning sheet and 70% isopropyl alcohol (not included). Place a few drops of the alcohol in the middle of the cleaning material and proceed to the **Calibrate** menu and select **Clean**. Your scanner will automatically pass the cleaning material over the internal image sensor to clean it.

Technical Support

FREE SUPPORT THROUGH EMAIL & WEB

Visit Ambir's website at www.ambir.com for online access to technical support information including: installation guides, FAQs, troubleshooting tips, and driver downloads. Contact email addresses and a chat feature are also available online for your convenience in reaching us should you need further assistance.

TECHNICAL SUPPORT BY TELEPHONE

Support is available from 9:00 a.m. – 6:00 p.m. Central Time Monday-Friday by dialing (630) 530-5400 or (800) 915-9930, option 3. For all Ambir scanners you can speak directly to a technical support representative or leave a message for a call back. You will be connected to a highly trained, friendly and professional support agent who will work with you to resolve your issue. For expediency when you call please be in front of your system with your software and documentation handy for troubleshooting.

*We will make every effort to respond to telephone support calls within 1 business day. However, we strongly suggest that you make initial contact via email with an explanation of the problem you are experiencing and a call-back number should we need to speak to you directly.

Product Warranty Information

Statement of Limited Warranty for the United States, Canada and European Economic Community:

Products – PS467, PS667, DS487, DS687, TravelScan® Pro, ImageScan™ Pro 490i

Warranty Period – 1 year

*Contact your place of purchase for warranty service information

WARRANTY FOR PRODUCTS

Ambir Technology warrants our products against defects in materials and workmanship to the original purchaser for a period of one (1) year from the date of the original purchase. This warranty is limited to repair or replacement of the product, and the remedy provided to the purchaser for warranty service is the sole discretion of Ambir Technology.

EXTENT OF WARRANTY

Any use of the product for a purpose in which it is not intended, and/or purchaser modifications, alterations, and/or repairs to the product, will constitute misuse and are not subject to the warranty. The warranty does not cover the repair or exchange of a product resulting from accident, unsuitable physical or operating environment, or failure caused by a product for which the Ambir is not responsible.

ITEMS NOT COVERED BY THE WARRANTY

Host computer operating systems, application programs or hardware configurations are not covered.

For customer service or further warranty information please email or call Ambir directly. Please provide product model name and number, place and date of purchase, your name, daytime telephone number and a description of the difficulty you are experiencing. You will normally receive a written email response or call-back within 1 business day.

Ambir Technology

918 N. Oaklawn Ave.
Elmhurst, IL 60126 USA
Toll Free: (800) 915-9930
Main Number: (630) 530-5400
Technical Support: (630) 530-5400 option 3
www.ambir.com