

## TABLE OF CONTENTS

<b>AMPLIFIERS</b> .....	<b>2</b>
PMA SERIES CLASS D.....	3
PMA SERIES HIGH CURRENT .....	4
PMA SERIES CLASS A/B BI-POLAR .....	6
PMZ SERIES .....	8
<b>SIGNAL PROCESSORS</b> .....	<b>10</b>
<b>PROCESSORS/ACCESSORIES</b> .....	<b>11</b>
<b>SUBWOOFERS</b> .....	<b>12</b>
MAYHEM 900 SERIES .....	12
800 SERIES .....	14
600 SERIES .....	16
400 SERIES .....	18
200 SERIES .....	19
100 SERIES .....	20
<b>AMPLIFIED ENCLOSURE</b> .....	<b>21</b>
<b>BANDPASS ENCLOSURES</b> .....	<b>22</b>
<b>800 SERIES COMPONENTS</b> .....	<b>24</b>
<b>800 SERIES TWEETERS</b> .....	<b>25</b>
<b>Z SERIES COMPONENT SETS/TWEETERS</b> .....	<b>26</b>
<b>CAPACITORS</b> .....	<b>27</b>
<b>800 SERIES FULL RANGE COMPONENTS</b> .....	<b>28</b>
<b>Z SERIES FULL RANGE</b> .....	<b>30</b>
<b>GRILLES</b> .....	<b>32</b>

# ALPHASONIK

## Mission Statement

It is Alphasonik's mission to provide our customers with superior and innovative products combined with exceptional service, establishing a long term, beneficial relationship.



# ALPHASONIK AMPLIFIERS

## REMOTE DIGITAL VOLT METER (PMA100V)

The PMA100V provides true, real-time monitoring of supply voltage at the amplifier and confirms that the vehicle's charging system is supplying sufficient voltage to meet your musical demands. Included is a 16-foot cord enabling you to mount it in the trunk, passenger cabin or customize it into your dash. Included with all PMA Series Amplifiers. (Optional with PMZ Series Amplifiers.)



## REMOTE BASS BOOST CONTROL (PMA10B)

Control your system's bass equalization from the driver's seat! The backlit PMA10B adjusts the amplifier's bass EQ level with a range of frequencies centered on 45Hz, the region associated with impact and SPL. Standard with all DA and HCA Series Amplifiers. Optional with PMZ and A/B Series Amplifiers.



## HOUR METER

Never before has a mobile audio product incorporated a method to log actual time of use. The tamper-proof aviation-grade Hobbs-type Hour Meter is a highly accurate mechanical counter driven by a dedicated analog clock circuit. This feature permits the user to accurately assess total system component performance in this pushed-to-the-limit world of auto sound competition. Featured on all PMA Series Amplifiers and Signal Processors.



## TIFFANY-STYLE RCA JACK

Most RCA connectors consist of two or more pieces and are typically attached to a plastic mounting board that is soldered directly to the PCB. Alphasonik's Tiffany-style RCA's are 1-piece and hard mounted directly to the amplifier's chassis with a locking bolt system and lead wires soldered to the PCB. Broken, pulled off or pushed in and inaccessible RCA's are a thing of the past with Alphasonik.



INTERFACE



TERMINALS

## PMA SERIES CLASS D AMPLIFIERS

Each monophonic PMA Series Class D Amplifier delivers maximum power into crushing 1-ohm loads. Fully variable 24dB/octave low-pass and subsonic filters focus the power within the tuning range of your bass enclosure. Includes the PMA100V Remote Digital Volt Meter and PMA10B Remote Bass Boost Controller as standard features.



# CLASS D AMPLIFIERS

## STANDARD FEATURES

- > Linkable with Second Identical Model (Hardware Included)
- > Hour Meter
- > Remote Mount PMA100V Digital Volt Meter
- > Remote Mount PMA10B Bass Boost Control
- > Heavy Duty One-Piece Extruded Aluminum Heat Sink
- > Beveled Clear Acrylic Protective Cover
- > Tiffany-Style RCA Jacks
- > Parallel Line-Out RCA Jacks
- > Removable Aluminum Side Covers Conceal Control & Terminal Panels
- > MOSFET High-Speed Switching Power Supply
- > Milspec Double-Sided Glass Epoxy Circuit Board w/ Through-Hole Plating
- > Heavy 4 oz. Pure Copper PC Traces at All Preamp & Amplification Stages
- > Internally Mounted Fan-Cooled Power Supply
- > Solid Brass Nickel-Plated Terminal Blocks (4-Gauge Power, 8-Gauge Speaker)
- > Variable Low-Pass Filter: 50Hz - 150Hz @ 24dB/Octave
- > Variable Subsonic Filter: 15Hz - 40Hz @ 24dB/Octave
- > Variable Bass Boost @ 45Hz: 0 - +18dB
- > Variable Phase Shift: 0 - 180°
- > THD: <0.08%
- > Signal-to-Noise Ratio: >100dB
- > Frequency Response: 5Hz - 250Hz
- > Input Impedance: 10k $\Omega$
- > Input Sensitivity: 300mV-8V
- > 4-Way Protection Circuitry: Thermal, Short Circuit, Overload & DC Offset
- > Cooling Fan(s)

## PMA800DA

### 1-CHANNEL CLASS D MONO BLOCK AMPLIFIER

- > 800 Watts x 1 @ 4 $\Omega$  Mono
- > 1200 Watts x 1 @ 2 $\Omega$  Mono
- > 1640 Watts x 1 @ 1 $\Omega$  Mono
- > Dimensions (W x H x L) 9 1/8 x 2 1/2 x 15 3/4"

## PMA1000DA

### 1-CHANNEL CLASS D MONO BLOCK AMPLIFIER

- > 1000 Watts x 1 @ 4 $\Omega$  Mono
- > 1500 Watts x 1 @ 2 $\Omega$  Mono
- > 2060 Watts x 1 @ 1 $\Omega$  Mono
- > Dimensions (W x H x L) 9 1/8 x 2 1/2 x 17 3/4"

## PMA1200DA

### 1-CHANNEL CLASS D MONO BLOCK AMPLIFIER

- > 1300 Watts x 1 @ 4 $\Omega$  Mono
- > 2000 Watts x 1 @ 2 $\Omega$  Mono
- > 2400 Watts x 1 @ 1 $\Omega$  Mono
- > Dimensions (W x H x L)  
9 1/8 x 2 1/2 x 20 7/8"



# HIGH CURRENT AMPLIFIERS

## PMA150HCA

### 2-CHANNEL HIGH CURRENT AMPLIFIER

- > 75 Watts x 2 @ 4Ω Stereo
- > 140 Watts x 2 @ 2Ω Stereo
- > 200 Watts x 2 @ 1Ω Stereo
- > 240 Watts x 1 @ 4Ω Mono
- > 350 Watts x 1 @ 2Ω Mono
- > 450 Watts x 1 @ 1Ω Mono
- > Dimensions (W x H x L)  
9 1/16 x 2 5/8 x 12 1/4"

## PMA300HCA

### 2-CHANNEL HIGH CURRENT AMPLIFIER

- > 150 Watts x 2 @ 4Ω Stereo
- > 270 Watts x 2 @ 2Ω Stereo
- > 450 Watts x 2 @ 1Ω Stereo
- > 475 Watts x 1 @ 4Ω Mono
- > 780 Watts x 1 @ 2Ω Mono
- > 900 Watts x 1 @ 1Ω Mono
- > Dimensions (W x H x L)  
9 1/16 x 2 5/8 x 16 1/16"

## PMA600HCA

### 2-CHANNEL HIGH CURRENT AMPLIFIER

- > 300 Watts x 2 @ 4Ω Stereo
- > 550 Watts x 2 @ 2Ω Stereo
- > 900 Watts x 2 @ 1Ω Stereo
- > 950 Watts x 1 @ 4Ω Mono
- > 1550 Watts x 1 @ 2Ω Mono
- > 1800 Watts x 1 @ 1Ω Mono
- > Dimensions (W x H x L)  
9 1/16 x 2 5/8 x 19 3/4"

INTERFACE

TERMINALS

## PMA SERIES

### HIGH CURRENT POWER AMPLIFIERS

Virtually identical in topology to the Class A/B Series, the High Current Series is designed to drive 1-ohm mono loads. Ideal for powering multiple voice coils in parallel or for running 4-ohm loads where maximum damping and minimum distortion is desired. Fully variable 24dB/octave low-pass, high-pass and subsonic crossovers. Includes the PMA100V Remote Digital Volt Meter and PMA10B Remote Bass Boost Controller as standard features.



# HIGH CURRENT AMPLIFIERS

## STANDARD FEATURES

- ▶ Bridgeable
- ▶ Hour Meter
- ▶ Remote Mount PMA100V Digital Volt Meter
- ▶ Remote Mount PMA10B Bass Boost Control
- ▶ Heavy Duty One-Piece Extruded Aluminum Heat Sink
- ▶ Beveled Clear Acrylic Protective Cover
- ▶ Tiffany-Style RCA Jacks
- ▶ Parallel Line-Out RCA Jacks
- ▶ Removable Aluminum Side Covers Conceal Control & Terminal Panels
- ▶ MOSFET High-Speed Switching Power Supply
- ▶ Milspec Double-Sided Glass Epoxy Circuit Board w/ Through-Hole Plating
- ▶ Heavy 4 oz. Pure Copper PC Traces at All Preamp & Amplification Stages
- ▶ Solid Brass Nickel-Plated Terminal Blocks (PMA800 & 1000HCA 2-Gauge Power, 8-Gauge Speaker) (PMA150, 300, 600 & 640HCA 4-Gauge Power, 8-Gauge Speaker)

- Variable Low-Pass Filter: 50Hz-250Hz, 24dB/Octave
- Variable High-Pass Filter: 50Hz-250Hz, 24dB/Octave
- Variable Subsonic Filter: 20Hz-60Hz, 24dB/Octave
- Variable Bass Boost @ 45Hz: 0 - +18dB
- Variable Phase Shift: 0-180°
- THD: < 0.05%
- Signal-to-Noise Ratio: >100dB
- Frequency Response: 5Hz-50kHz
- Input Impedance: 10kΩ
- Input Sensitivity: 200mV-8V
- 4-Way Protection Circuitry: Thermal, Short Circuit, Overload & DC Offset
- Cooling Fan(s)

## PMA640HCA

### 4-CHANNEL HIGH CURRENT AMPLIFIER

- ▶ 160 Watts x 4 @ 4Ω Stereo
- ▶ 290 Watts x 4 @ 2Ω Stereo
- ▶ 480 Watts x 4 @ 1Ω Stereo
- ▶ 500 Watts x 2 @ 4Ω Mono
- ▶ 825 Watts x 2 @ 2Ω Mono
- ▶ 960 Watts x 2 @ 1Ω Mono
- ▶ Dimensions (W x H x L) 9 1/16 x 2 5/8 x 19 3/4"

## PMA800HCA

### 1-CHANNEL HIGH CURRENT AMPLIFIER

- ▶ 800 Watts x 1 @ 4Ω Mono
- ▶ 1400 Watts x 1 @ 2Ω Mono
- ▶ 2900 Watts x 1 @ 1Ω Mono
- ▶ Dimensions (W x H x L) 9 1/16 x 2 5/8 x 26"

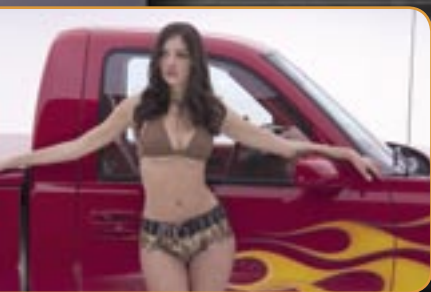
## PMA1000HCA

### 2-CHANNEL HIGH CURRENT AMPLIFIER

- ▶ 500 Watts x 2 @ 4Ω Stereo
- ▶ 900 Watts x 2 @ 2Ω Stereo
- ▶ 1500 Watts x 2 @ 1Ω Stereo
- ▶ 1575 Watts x 1 @ 4Ω Mono
- ▶ 2500 Watts x 1 @ 2Ω Mono
- ▶ 3000 Watts x 1 @ 1Ω Mono
- ▶ Dimensions (W x H x L) 9 1/16 x 2 5/8 x 26"



# CLASS A/B BI-POLAR AMPLIFIERS



## PMA2075A

### 2-CHANNEL CLASS A/B BI-POLAR AMPLIFIER

- > 75 Watts x 2 @ 4Ω Stereo
- > 120 Watts x 2 @ 2Ω Stereo
- > 230 Watts x 1 @ 4Ω Mono
- > Dimensions (W x H x L) 8 1/4 x 2 5/8 x 9 3/8"



## PMA2150A

### 2-CHANNEL CLASS A/B BI-POLAR AMPLIFIER

- > 150 Watts x 2 @ 4Ω Stereo
- > 260 Watts x 2 @ 2Ω Stereo
- > 440 Watts x 1 @ 4Ω Mono
- > Dimensions (W x H x L) 8 1/4 x 2 5/8 x 13 3/4"



## PMA2300A

### 2-CHANNEL CLASS A/B BI-POLAR AMPLIFIER

- > 300 Watts x 2 @ 4Ω Stereo
- > 500 Watts x 2 @ 2Ω Stereo
- > 900 Watts x 1 @ 4Ω Mono
- > Dimensions (W x H x L) 8 1/4 x 2 5/8 x 17 1/4"



## PMA1800A

### 1-CHANNEL CLASS A/B BI-POLAR AMPLIFIER

- > 800 Watts x 1 @ 4Ω Mono
- > 1300 Watts x 1 @ 2Ω Mono
- > Dimensions (W x H x L) 8 1/4 x 2 5/8 x 22"



INTERFACE



TERMINALS

## PMA SERIES

### CLASS A/B BI-POLAR AMPLIFIERS

The audiophile's choice - PWM MOSFET switching power supply running a noise-canceling dual differential drive stage and sweet, Darlington topology bi-polar output transistors. Whew! Fully Variable 24dB/octave low-pass, high-pass and subsonic crossovers permit the optimization of any custom system. 2-ohm stereo stable. Includes the PMA100V Remote Digital Volt Meter as a standard accessory.



# CLASS A/B BI-POLAR AMPLIFIERS

## STANDARD FEATURES

- > Hour Meter
- > Remote Mount PMA100V Digital Volt Meter
- > Heavy Duty One-Piece Extruded Aluminum Heat Sink
- > Beveled Clear Acrylic Protective Cover
- > Tiffany-Style RCA Jacks
- > Parallel Line-Out RCA Jacks
- > MOSFET High Speed Switching Power Supply
- > Milspec Double-Sided Glass Epoxy Circuit Board w/ Through-Hole Plating
- > Heavy 4 oz. Pure Copper PC Traces at All Preamp and Amplification Stages
- > Solid Brass Nickel-Plated Terminal Blocks (4-Gauge Power, 8-Gauge Speaker)
- > Variable Low-Pass Filter: 50Hz-250Hz, 24dB/Octave
- > Variable High-Pass Filter: 50Hz-250Hz, 24dB/Octave
- > Variable Subsonic Filter: 20Hz-60Hz, 24dB/Octave
- > Variable Bass Boost @ 45Hz: 0 - +18dB
- > Variable Phase Shift: 0-180°
- > THD: < 0.03%
- > Signal-to-Noise Ratio: >100dB
- > Frequency Response: 5Hz-50kHz
- > Input Impedance: 10k $\Omega$
- > Input Sensitivity: 200mV-8V
- > 4-Way Protection Circuitry: Thermal, Short Circuit, Overload & DC Offset
- > Cooling Fan(s)

## PMA2500A

### 2-CHANNEL CLASS A/B BI-POLAR AMPLIFIER

- > 500 Watts x 2 @ 4 $\Omega$  Stereo
- > 800 Watts x 2 @ 2 $\Omega$  Stereo
- > 1500 Watts x 1 @ 4 $\Omega$  Mono
- > Dimensions (W x H x L) 8 1/4 X 2 5/8 X 21 1/4"

## PMA4075A

### 4-CHANNEL CLASS A/B BI-POLAR AMPLIFIER

- > 75 Watts x 4 @ 4 $\Omega$  Stereo
- > 120 Watts x 4 @ 2 $\Omega$  Stereo
- > 230 Watts x 2 @ 4 $\Omega$  Mono
- > Dimensions (W x H x L) 8 1/4 x 2 5/8 x 21 1/2"

## PMA4150A

### 4-CHANNEL CLASS A/B BI-POLAR AMPLIFIER

- > 150 Watts x 4 @ 4 $\Omega$  Stereo
- > 240 Watts x 4 @ 2 $\Omega$  Stereo
- > 460 Watts x 2 @ 4 $\Omega$  Mono
- > Dimensions (W x H x L) 8 1/4 x 2 5/8 x 22"

## PMA5753A

### 5-CHANNEL CLASS A/B BI-POLAR AMPLIFIER

- > 75 Watts x 4 @ 4 $\Omega$  Stereo & 260 Watts x 1 @ 4 $\Omega$  Mono
- > 125 Watts x 4 @ 2 $\Omega$  Stereo & 400 Watts x 1 @ 2 $\Omega$  Mono
- > 225 Watts x 2 @ 4 $\Omega$  Mono & 400 Watts x 1 @ 2 $\Omega$  Mono
- > Dimensions (W x H x L) 8 1/4 X 2 5/8 X 21 5/8"



# Z-SERIES AMPLIFIERS

## SERIES



### PMZ1502A

#### 2-CHANNEL CLASS A/B BI-POLAR AMPLIFIER

- > 50 Watts x 2 @ 4Ω Stereo
- > 75 Watts x 2 @ 2Ω Stereo
- > 150 Watts x 1 @ 4Ω Mono
- > Dimensions (W x H x L) 9 1/4 x 2 x 6 3/4"



### PMZ1600DA

#### 1-CHANNEL CLASS D AMPLIFIER

- > 300 Watts x 1 @ 4Ω Mono
- > 600 Watts x 1 @ 2Ω Mono
- > Dimensions (W x H x L) 9 1/4 x 2 x 6 1/2"



### PMZ3002A

#### 2-CHANNEL CLASS A/B BI-POLAR AMPLIFIER

- > 100 Watts x 2 @ 4Ω Stereo
- > 150 Watts x 2 @ 2Ω Stereo
- > 300 Watts x 1 @ 4Ω Mono
- > Dimensions (W x H x L) 9 1/4 x 2 x 8 1/8"



INTERFACE



TERMINALS

### PMZ SERIES

#### CLASS A/B BI-POLAR POWER AMPLIFIERS

Our latest design - fully featured and only 2 inches tall!! PWM MOSFET switching power supply running Darlington topology bi-polar output transistors. Fully variable 18dB/octave low-pass, high-pass and subsonic crossovers to fine-tune any system. 2-ohm stereo stable. PMA100V Remote Digital Volt Meter and PMA10B Bass Boost Control optional.





# Z-SERIES AMPLIFIERS

## STANDARD FEATURES

- > Bridgeable
- > High Level Inputs
- > MOSFET High Speed Switching Power Supply
- > Variable Low-Pass Filter: 50Hz-250Hz, 18dB/Octave
- > Variable High-Pass Filter: 50Hz-250Hz, 18dB/Octave
- > Variable Bass Boost @ 45Hz: 0 - +18dB
- > Variable Phase Shift: 0-180°
- > Variable Subsonic Filter: 20Hz-60Hz, 18dB/Octave
- > Solid Brass Nickel-Plated Terminal Blocks
- > Milspec Double-Sided Glass Epoxy Circuit Board
- > Tiffany-Style RCA Jacks
- > 4-Way Protection Circuitry: Thermal, Short Circuit, Overload & DC Offset
- > PMA100V Volt Meter & PMA10B Bass Boost Control **Optional**

## PMZ6002A

### 2-CHANNEL CLASS A/B BI-POLAR AMPLIFIER

- > 150 Watts x 2 @ 4Ω Stereo
- > 240 Watts x 2 @ 2Ω Stereo
- > 480 Watts x 1 @ 4Ω Mono
- > Dimensions (W x H x L) 9 1/4 x 2 x 11 7/8"

## PMZ6004A

### 4-CHANNEL CLASS A/B BI-POLAR AMPLIFIER

- > 75 Watts x 4 @ 4Ω Stereo
- > 120 Watts x 4 @ 2Ω Stereo
- > 240 Watts x 2 @ 4Ω Mono
- > Dimensions (W x H x L) 9 1/4 x 2 x 12 5/8"

## PMZ12005A

### 5-CHANNEL CLASS A/B BI-POLAR AMPLIFIER

- > 75 Watts x 4 @ 4Ω Stereo & 200 Watts x 1 @ 4Ω Mono
- > 120 Watts x 4 @ 2Ω Stereo & 320 Watts x 1 @ 2Ω Mono
- > 185 Watts x 2 @ 4Ω Mono & 320 Watts x 1 @ 2Ω Mono
- > Dimensions (W x H x L) 9 1/4 x 2 x 19"



# PROCESSORS

## PROCESSORS

While each Alphasonik amplifier, woofer and full range speaker is designed for maximum performance, every possible environment and application can't be accounted for. Equalization and signal processing is essential to achieve imaging, dynamics and overall peak performance from your system.

## STANDARD FEATURES

- > Hour Meter
- > Heavy Duty One-Piece Extruded Aluminum Heat Sink
- > Active Gain Preamplifier w/ up to 8 Volts RMS Output
- > Removable Beveled Clear Acrylic Protective Cover
- > Removable Aluminum Side Covers Conceal Input / Output & Terminal Panels
- > Tiffany-Style RCA Jacks
- > Line-Out
- > Rotary Control Knobs
- > Variable Output Level Controls for All Processed Channels
- > MOSFET 30-Volt Switching Power Supply
- > Solid Brass Nickel-Plated Compression-Fit Terminal Blocks (8-Gauge)
- > Stereo/Mono Subwoofer Switch

## PEQ20LX

### 20-BAND EQ, CROSSOVER, 8-VOLT LINE DRIVER

- > Equalizer Bypass Switch
- > 20-Band Graphic Equalizer +/- 18dB/Octave
- > 2-Way Fading or 3-Way Non-Fading Crossover @ 18dB/Octave
- > Variable Low-Pass Sub Channel Crossover: 40Hz - 400Hz
- > Variable Band-Pass (or Rear High-Pass) Crossover: Low (40Hz - 800Hz) & High (2kHz - 7kHz)
- > Variable High-Pass Tweeter or Front Crossover: 40Hz - 8kHz (w/ 10x switch)
- > Variable Bass Level: +18dB at Selected Frequency
- > Variable Q: 2 - 20
- > Variable Front/Rear Fader for 2-Channel Input Systems
- > Subwoofer Phase Control: 0-180°
- > Remote Bass Control Module Adjusting Bass Level & Filter Q (included)
- > Band-Pass/High-Pass Midrange Switch
- > Sub, Band-Pass, Mid/High-Pass & High-Pass RCA Outputs
- > Variable Input Levels for All Channels
- > Dimensions (W x H x L): 9 x 2 1/2 x 13 3/4"

## PEX3B

### 3-WAY ELECTRONIC CROSSOVER, PARAMETRIC BASS EQ

- > +/- 18dB/Octave Active Slope
- > Variable Low-Pass Crossover: 40Hz - 400Hz
- > Variable Band-Pass Crossover: High-Pass (40Hz - 800Hz) & Low-Pass (2kHz - 7kHz)
- > Variable High-Pass Crossover: 40Hz - 8kHz (w/ 10x Switch)
- > Variable Q: 2 - 20
- > Variable Bass Boost: 0 - +18dB @ Selected Boost Frequency
- > Variable Left & Right Midrange Phase Control: 0-180°
- > Parametric Bass Controls Adjusting Boost Level, Boost Frequency & Filter Q
- > Bass Boost Frequency: 25Hz-250Hz
- > Remote Bass Control Module Adjusting Bass Level & Boost (included)
- > Sub-Mode Switch: Mix/Direct
- > Band-Pass/High-Pass Midrange Switch
- > Sub, Band-Pass, Mid/High-Pass & High-Pass RCA Outputs
- > Dimensions (W x H x L): 6 x 2 1/2 x 11"

## PLD100

### 8-VOLT LINE DRIVER W/ PARAMETRIC REMOTE BASS CONTROL

- > Variable Q: 2 - 20
- > Variable Input Level Controls for All Channels
- > Variable Output Level Controls for All Channels
- > Variable Bass Level: 0 - +18dB at Selected Frequency
- > Variable Boost Frequency: 40Hz - 400Hz +18dB
- > Subwoofer Phase Control: 0-180°
- > Parametric Remote Bass Control Module Adjusting Boost Level, Boost Frequency & Filter Q (included)
- > Heavy Duty One-Piece Extruded Aluminum Heat Sink
- > Removable Beveled Clear Acrylic Protective Cover
- > Removable Aluminum Side Covers Conceal Input/Output & Terminal Panels
- > MOSFET 30-Volt Switching Power Supply
- > Milspec Double-Sided Glass Epoxy Circuit Board
- > Solid Brass Nickel-Plated Compression-Fit Terminal Blocks (8-Gauge)
- > Built-In Power Protection Fuse
- > Dimensions (W x H x L): 6 x 2 1/2 x 9"

## PEX2B

### 2-WAY ELECTRONIC CROSSOVER, PARAMETRIC BASS EQ

- > Remote Bass Control Module, Adjusting Bass Level & Boost (included)
- > Variable Bass Level 0 - +18dB
- > Variable High Level Input
- > Variable Q: 2 - 20
- > Variable High-Pass Crossover: 40Hz - 8kHz (w/ 10x Switch)
- > Variable Bass Boost Frequency: 25Hz-250Hz
- > Variable Bass Boost: 0 - +18dB @ Selected Boost Frequency
- > Variable Left & Right High-Pass Phase Control: 0-180°
- > +/- 18dB/Octave Active Slope
- > Parametric Bass Controls Adjusting Boost Level, Boost Frequency & Filter Q
- > Sub-Mode Switch: Mix/Direct
- > Sub, High-Pass & Line-Out RCA Outputs
- > Dimensions (W x H x L): 6 x 2 1/2 x 10"



# PROCESSORS / ACCESSORIES



## PEQ70

### 5-BAND IN-DASH EQUALIZER & PRE-AMP

- > 5-Band Stereo Equalizer (45Hz, 100Hz, 700Hz, 2kHz, 15kHz)
- > Active Gain Preamplifier w/ up to 8 Volts RMS Output
- > Subwoofer Crossover Variable from 40Hz-160Hz @ 18dB/octave
- > Master Volume Control
- > Fader Control
- > Subwoofer Level Control: +18dB Gain
- > Main / DVD Input Selector
- > Independent Left & Right DVD Input Sensitivity for Gain Matching
- > Low Noise Bi-FET Op-Amp Design Yields Minimal Distortion
- > On-Board 30-Volt PWM Switching Power Supply
- > 20dB Headroom Eliminates Signal Clipping
- > Gold-Plated RCA Inputs & Outputs
- > Case Dimensions (W x H x D): 7 x 1 1/8 x 4 1/16"



## PEQ90

### 4-BAND IN-DASH PARAMETRIC EQUALIZER & PRE-AMP

- > 4-Band Parametric Equalizer w/ Variable Center Frequencies
- > Active Gain Preamplifier w/ up to 8 Volts RMS Output
- > 6-Channel Crossover: Front, Rear & Subwoofer Outputs
- > Variable Front High-Pass Crossover: 40Hz-420Hz @ 18dB/octave
- > Variable Rear High-Pass Crossover: 40Hz-420Hz @ 18dB/octave
- > Variable Sub Low-Pass Crossover: 40Hz-420Hz @ 18dB/octave
- > Master Volume Control
- > Fader Control
- > Subwoofer Level Control: +18dB Gain
- > Main / DVD Input Selector
- > Independent Left & Right DVD Input Sensitivity for Gain Matching
- > Low Noise Bi-FET Op-amp Design Yields Minimal Distortion
- > On-Board 30-Volt PWM Switching Power Supply
- > 20dB Headroom Eliminates Signal Clipping
- > Gold-Plated RCA Inputs & Outputs
- > Case Dimensions (W x H x D): 6 7/8 x 1 x 4 1/8"

## AMPLIFIER KITS



## PAK40

### 4 GAUGE AMP KIT

- > 20 ft. 4-Gauge Clear SILVER Braided Power Cable
- > 3 ft. 4-Gauge Clear BLACK Ring CHROME Terminal
- > 12 ft. 12-Gauge Clear w/ One Gold Silver & One Silver Speaker Wire
- > 17 ft. Twisted ORANGE & SILVER RCA Leads w/ Clear Sleeve Cover
- > 17 ft. 18-Gauge BLUE Remote Turn-On Lead
- > 6 ft. Medium BLACK Split Loom
- > 80 Amp ANL Fuse
- > ANL CHROME Fuse Holder



## PAK80

### 8 GAUGE AMP KIT

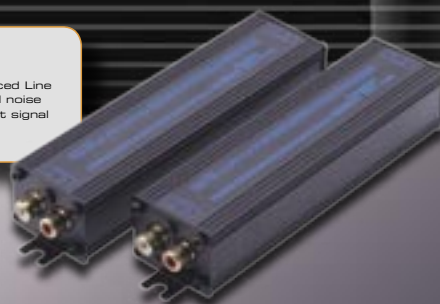
- > 20 ft. 8-Gauge Clear SILVER Braided Power Cable
- > 3 ft. 8-Gauge Clear BLACK Ring CHROME Terminal
- > 12 ft. 12-Gauge Clear w/ One Gold Silver & One Silver Speaker Wire
- > 17 ft. Twisted ORANGE & SILVER RCA Leads w/ Clear Sleeve Cover
- > 17 ft. 18-Gauge BLUE Remote Turn-On Lead
- > 6 ft. Medium BLACK Split Loom
- > 80 Amp ANL Fuse
- > ANL CHROME Fuse Holder

## LINE BALANCERS

### REMEDY PRO I

#### BALANCED LINE TRANSMITTER

Converts Low Level Audio Signal to Balanced Line Output. Helps cancel induced and radiated noise of vehicle's electrical system. Isolates input signal from ground. Most applications require both PRO I & PRO II.



### REMEDY PRO II

#### BALANCED LINE RECEIVER

Allows balanced line input to any amplifier with low level inputs. Requires balanced line signal from source unit or REMEDY PRO I. Helps cancel induced and radiated noise of vehicle's electrical system. Isolates input signal from ground. Most applications require both PRO I & PRO II.

# MAYHEM 900 SERIES

WITH THE GROWING DEMAND FOR AMPLIFIERS THAT WILL RUN AT 1-OHM LOADS, ALPHASONIK ANSWERED BACK WITH TWO SERIES OF AMPLIFIERS CONSISTING OF NINE MODELS TO MEET THE NEEDS OF A GROWING MARKET. NOW WE ARE DELIVERING PHASE 2 OF YOUR DEMANDS: A SINGLE WOOFER THAT CAN RUN AT 1-OHM LOAD AND GET THE MAXIMUM AMOUNT OF POWER TO THE COILS.

ALPHASONIK IS PLEASED TO RELEASE THE NEW MAYHEM 900 SERIES. CONSISTING OF DUAL 2-OHM VOICE COILS, THIS SPEAKER WILL RUN EITHER 4-OHMS IN SERIES OR 1-OHM IN PARALLEL. THE MASSIVE TRIPLE-STACKED MAGNET AIDS IN THE INCREDIBLE POWER HANDLING AND THE CONE AND DUST CAP ARE INVERTED FOR FANTASTIC BASS RESPONSE.

PATENTED IN-AND-OUT TERMINALS MAKE WIRING A BREEZE AND KEEPS THE INSTALL LOOKING CLEAN. PREPARE TO REDEFINE THE TERM "BASS" WITH ALPHASONIK!

#### CAST WOOFERS

From its patented heat sink which enhances power handling to the Lug-Lock input and output terminals, these Series slams the competition. With its proven performance in competitions and on the street, it's a winner right out of the box!

#### IN/OUT LUG-LOCK TERMINALS

All Alphasonik cast basket subwoofers feature our patented input and output terminals. Configure voice coils or drivers in series or parallel with no fuss and no cramped or frayed wires. Terminals are audiophile-grade nickel-plated, machined brass and compression fit with Allen head setscrews.

#### PROPRIETARY HEAT SINK

All Alphasonik Subwoofers have motor structures encased in cast aluminum machine-finished heat sinks. Power handling is enhanced because excess heat is quickly absorbed and transferred to the environment. The music may get hot but our subs run cool.

#### PATENTS

Motor Assembly  
US Patent#  
6,601,645

Speaker Heat Sink  
US Patent#  
D478,556

Speaker Terminal  
Block Assembly  
US Patent#  
6,656,000



# MAYHEM 900 SERIES



## MAYHEM 900 SERIES

### DUAL 2-OHM SUBWOOFER

#### **PSW912**

##### **12" ALPHA MAYHEM 900 SERIES SUBWOOFER**

- ▶ Cast Aluminum Machine Cut "Alpha" Basket
- ▶ Motor Assembly Heat Sink
- ▶ Ultra Light 2-Layer Carbon Fiber, Kevlar® Cone with Aluminum Dust Cap
- ▶ TLTF J-Surround
- ▶ Flat Progressive Rate Nomex® Damper with Spiral-Woven Leads
- ▶ 8-Gauge Lug-Lock Input & Output Terminals
- ▶ Rated at 2200 Watts RMS
- ▶ 93dB Efficiency
- ▶ Frequency Response of 45Hz to 900Hz
- ▶ 200 oz. Triple-Stacked Magnet
- ▶ Dual 2-ohm 3" Voice Coils
- ▶ Mounting Dimensions:
  - Depth: 11 3/8"
  - Through Hole: 10 3/4"
  - Diameter: 11 1/4"



# 800 SERIES SUBWOOFERS

ALPHA  
800  
SERIES



**PSW810 SHOWN**  
US PATENT #6,601,645  
US PATENT #D478,556  
US PATENT #6,656,000

## DUAL 2-OHM SUBWOOFERS

### PSW810

#### 10" ALPHA 800 SERIES SUBWOOFER

- Cast Aluminum Machine Cut "Alpha" Basket
- Motor Assembly Heat Sink
- Kevlar® Reinforced Composite Balanced & Laminated Cone
- High Tensile Strength Two-Layer Surround for Enhanced Control
- Flat Progressive Rate Nomex® Damper w/ Spiral-Woven Leads
- 8-Gauge Lug-Lock Input & Output Terminals
- Rated at 800 Watts RMS
- 89dB Efficiency
- Frequency Response of 29Hz to 500Hz
- 135 oz. Double-Stacked Magnet
- Dual 2-ohm 2-1/2" Voice Coils
- Mounting Dimensions:
  - Depth: 6 1/8"
  - Through Hole: 8 7/8"
  - Diameter: 10 3/16"

### PSW812

#### 12" ALPHA 800 SERIES SUBWOOFER

- Cast Aluminum Machine Cut "Alpha" Basket
- Motor Assembly Heat Sink
- Kevlar® Reinforced Composite Balanced & Laminated Cone
- High Tensile Strength Two-Layer Surround for Enhanced Control
- Flat Progressive Rate Nomex® Damper w/ Spiral-Woven Leads
- 8-Gauge Lug-Lock Input & Output Terminals
- Rated at 900 Watts RMS
- 92dB Efficiency
- Frequency Response of 28Hz to 500Hz
- 135 oz. Double-Stacked Magnet
- Dual 2-ohm 2-1/2" Voice Coils
- Mounting Dimensions:
  - Depth: 6 5/8"
  - Through Hole: 10 7/8"
  - Diameter: 12 5/16"

### PSW815

#### 15" ALPHA 800 SERIES SUBWOOFER

- Cast Aluminum Machine Cut "Alpha" Basket
- Motor Assembly Heat Sink
- Kevlar® Reinforced Composite Balanced & Laminated Cone
- High Tensile Strength Two-Layer Surround for Enhanced Control
- Flat Progressive Rate Nomex® Damper w/ Spiral-Woven Leads
- 8-Gauge Lug-Lock Input & Output Terminals
- Rated at 1000 Watts RMS
- 94dB Efficiency
- Frequency Response of 24Hz to 500Hz
- 150 oz. Double-Stacked Magnet
- Dual 2-ohm 3" Voice Coils
- Mounting Dimensions:
  - Depth: 8"
  - Through Hole: 13 7/8"
  - Diameter: 15 1/16"

# 800 SERIES SUBWOOFERS

ALPHA  
800  
SERIES



**PSW810 SHOWN**  
US PATENT #6,601,645  
US PATENT #D478,556  
US PATENT #6,656,000

## DUAL 4-OHM SUBWOOFERS

### PSW8104

#### 10" ALPHA 800 SERIES SUBWOOFER

- > Cast Aluminum Machine Cut "Alpha" Basket
- > Motor Assembly Heat Sink
- > Kevlar® Reinforced Composite Balanced & Laminated Cone
- > High Tensile Strength Two-Layer Surround for Enhanced Control
- > Flat Progressive Rate Nomex® Damper w/ Spiral-Woven Leads
- > 8-Gauge Lug-Lock Input & Output Terminals
- > Rated at 800 Watts RMS
- > 89dB Efficiency
- > Frequency Response of 29Hz to 500Hz
- > 135 oz. Double-Stacked Magnet
- > Dual 4-ohm 2-1/2" Voice Coils
- > Mounting Dimensions:
  - Depth: 6 1/8"
  - Through Hole: 8 7/8"
  - Diameter: 10 3/16"

### PSW8124

#### 12" ALPHA 800 SERIES SUBWOOFER

- > Cast Aluminum Machine Cut "Alpha" Basket
- > Motor Assembly Heat Sink
- > Kevlar® Reinforced Composite Balanced
- > High Tensile Strength Two-Layer Surround for Enhanced Control
- > Flat Progressive Rate Nomex® Damper w/ Spiral-Woven Leads
- > 8-Gauge Lug-Lock Input & Output Terminals
- > Rated at 900 Watts RMS
- > 92dB Efficiency
- > Frequency Response of 28Hz to 500Hz
- > 135 oz. Double-Stacked Magnet
- > Dual 4-ohm 2-1/2" Voice Coils
- > Mounting Dimensions:
  - Depth: 6 5/8"
  - Through Hole: 10 7/8"
  - Diameter: 12 5/16"

### PSW8154

#### 15" ALPHA 800 SERIES SUBWOOFER

- > Cast Aluminum Machine Cut "Alpha" Basket
- > Motor Assembly Heat Sink
- > Kevlar® Reinforced Composite Balanced & Laminated Cone
- > High Tensile Strength Two-Layer Surround for Enhanced Control
- > Flat Progressive Rate Nomex® Damper w/ Spiral-Woven Leads
- > 8-Gauge Lug-Lock Input & Output Terminals
- > Rated at 1000 Watts RMS
- > 94dB Efficiency
- > Frequency Response of 24Hz to 500Hz
- > 150 oz. Double-Stacked Magnet
- > Dual 4-ohm 3" Voice Coils
- > Mounting Dimensions:
  - Depth: 8"
  - Through Hole: 13 7/8"
  - Diameter: 15 1/16"

# 600 SERIES SUBWOOFERS

ALPHA  
600  
SERIES

## CAST WOOFERS

Alphasnik's 600 Series is geared towards serious bassheads. Massive motor structures, double-stacked magnets and our patented Lug-Lock terminals, heat sink and motor structure design set this series apart from the rest. While the 600 Series is designed for competition, it's what basshead dreams are made of. Ideal for small sealed enclosures and moderately sized ported enclosures.

## BASKET WEAVE, KEVLAR® REINFORCED KRAFT PULP CONE

All Alphasnik 800 and 600 Series subwoofers use our environmentally treated Kevlar® reinforced, kraft pulp cone - the most neutral sounding material in the industry. Virgin, long-fiber kraft pulp is air cured and strengthened with Kevlar®. If you beat on our subs, they hit back.

## TLTF SURROUND

All Alphasnik 800 and 600 Series subwoofers feature a massive 2-layer, high-travel surround for reliability and control at maximum excursion. The 600 Series, featuring our new TLTF J-Surround, is designed for increased cone surface area without sacrificing low frequency response.



## PSW610J SHOWN

US PATENT #6,601,645  
US PATENT #D478,556  
US PATENT #6,656,000

## DUAL 4-OHM SUBWOOFERS

### PSW608

#### 8" ALPHA 600 SERIES SUBWOOFER

- > Cast Aluminum Machine Cut "Alpha" Basket
- > Motor Assembly Heat Sink
- > Kevlar® Reinforced Composite Balanced & Laminated Cone
- > High Tensile Strength Two-Layer Surround for Enhanced Control
- > Flat Progressive Rate Nomex® Damper w/ Spiral-Woven Leads
- > 8-Gauge Lug-Lock Input & Output Terminals
- > Rated at 300 Watts RMS
- > 86dB Efficiency
- > Frequency Response of 34Hz to 500Hz
- > 60 oz. Double-Stacked Magnet
- > Dual 4-ohm 2" Voice Coils
- > Mounting Dimensions:
  - Depth: 4 7/8"
  - Through Hole: 7 1/2"
  - Diameter: 8 1/2"

### PSW610J

#### 10" ALPHA 600 SERIES SUBWOOFER

- > Cast Aluminum Machine Cut "Alpha" Basket
- > Motor Assembly Heat Sink
- > Kevlar® Reinforced Composite Balanced & Laminated Cone
- > TLTF J-Surround
- > Flat Progressive Rate Nomex® Damper w/ Spiral-Woven Leads
- > 8-Gauge Lug-Lock Input & Output Terminals
- > Rated at 600 Watts RMS
- > 87dB Efficiency
- > Frequency Response of 33Hz to 500Hz
- > 75 oz. Double-Stacked Magnet
- > Dual 4-ohm 2" Voice Coils
- > Mounting Dimensions:
  - Depth: 6"
  - Through Hole: 8 7/8"
  - Diameter: 10 3/16"





# 600 SERIES SUBWOOFERS



ALPHA  
**600**  
SERIES

## PSW612J

### 12" ALPHA 600 SERIES SUBWOOFER

- > Cast Aluminum Machine Cut "Alpha" Basket
- > Motor Assembly Heat Sink
- > Kevlar® Reinforced Composite Balanced & Laminated Cone
- > TLTF J-Surround
- > Flat Progressive Rate Nomex® Damper w/ Spiral-Woven Leads
- > 8-Gauge Lug-Lock Input & Output Terminal
- > Rated at 700 Watts RMS
- > 88dB Efficiency
- > Frequency Response of 30Hz to 500Hz
- > 75 oz. Double-Stacked Magnet
- > Dual 4-ohm 2-1/2" Voice Coils
- > Mounting Dimensions:
  - Depth: 8 1/2"
  - Through Hole: 10 7/8"
  - Diameter: 12 5/16"

## PSW615J

### 15" ALPHA 600 SERIES SUBWOOFER

- > Cast Aluminum Machine Cut "Alpha" Basket
- > Motor Assembly Heat Sink
- > Kevlar® Reinforced Composite Balanced & Laminated Cone
- > TLTF J-Surround
- > Flat Progressive Rate Nomex® Damper w/ Spiral-Woven Leads
- > 8-Gauge Lug-Lock Input & Output Terminal
- > Rated at 800 Watts RMS
- > 92dB Efficiency
- > Frequency Response of 25Hz to 500Hz
- > 98 oz. Double-Stacked Magnet
- > Dual 4-ohm 2-1/2" Voice Coils
- > Mounting Dimensions:
  - Depth: 7 1/2"
  - Through Hole: 13 7/8"
  - Diameter: 15 1/4"



## PSW610J SHOWN

US PATENT #6,601,645  
US PATENT #D478,556  
US PATENT #6,656,000



# 400 SERIES SUBWOOFERS

## ALPHA 400 SERIES

### STAMPED WOOFERS

The 400 Series is the largest of our stamped steel basket subs. With bigger motor structures, bigger magnet, bigger voice coil and more power handling, you get more bang for the buck. Being one of our most versatile subwoofers, this Series works well in both sealed and ported applications. Greater power handling and more excursion equate to more bass in your face!

### MINERAL-FILLED POLYMER INVERTED DOME

All Alphasonik 400 and 200 Series Subwoofers use the latest technology in mineral-filled polymers for musical neutrality. The inverted dome geometry can handle tremendous stress without deformation.

### EPDM SURROUND

All Alphasonik 400 and 200 Series Subwoofers employ EPDM surrounds. This high-tech synthetic rubber exhibits both high tensile strength and compliance over a wide range of temperatures.



**PSW410 SHOWN**  
US PATENT #6,601,645  
US PATENT #D478,556

### DUAL 4-OHM SUBWOOFERS

#### PSW410

##### 10" ALPHA 400 SERIES SUBWOOFER

- > Heavy Gauge Stamped Steel Chrome Plated "Alpha" Basket
- > Motor Assembly Heat Sink
- > High Rigidity Inverted Dome Mineral-Filled Composite Cone
- > EPDM Surround for Enhanced Control at Extreme Temperatures
- > Flat Progressive Rate Nomex® Damper w/ Spiral-Woven Leads
- > 8-Gauge Lug-Lock Input Terminals
- > Rated at 400 Watts RMS
- > 90dB Efficiency
- > Frequency Response of 30Hz to 500Hz
- > 46 oz. Double-Stacked Magnet
- > Dual 4-ohm 2" Voice Coils
- > Mounting Dimensions:
  - Depth: 5 1/2"
  - Through Hole: 9 3/8"
  - Diameter: 10 15/16"

#### PSW412

##### 12" ALPHA 400 SERIES SUBWOOFER

- > Heavy Gauge Stamped Steel Chrome Plated "Alpha" Basket
- > Motor Assembly Heat Sink
- > High Rigidity Inverted Dome Mineral-Filled Composite Cone
- > EPDM Surround for Enhanced Control at Extreme Temperatures
- > Flat Progressive Rate Nomex® Damper w/ Spiral-Woven Leads
- > 8-Gauge Lug-Lock Input Terminals
- > Rated at 500 Watts RMS
- > 91dB Efficiency
- > Frequency Response of 25Hz to 500Hz
- > 46 oz. Double-Stacked Magnet
- > Dual 4-ohm 2" Voice Coils
- > Mounting Dimensions:
  - Depth: 6"
  - Through Hole: 11 1/8"
  - Diameter: 12 7/8"

#### PSW415

##### 15" ALPHA 400 SERIES SUBWOOFER

- > Heavy Gauge Stamped Steel Chrome Plated "Alpha" Basket
- > Motor Assembly Heat Sink
- > High Rigidity Inverted Dome Mineral-Filled Composite Cone
- > EPDM Surround for Enhanced Control at Extreme Temperatures
- > Flat Progressive Rate Nomex® Damper w/ Spiral-Woven Leads
- > 8-Gauge Lug-Lock Input Terminals
- > Rated at 600 Watts RMS
- > 93dB Efficiency
- > Frequency Response of 25Hz to 500Hz
- > 51 oz. Double-Stacked Magnet
- > Dual 4-ohm 2" Voice Coils
- > Mounting Dimensions:
  - Depth: 6 1/2"
  - Through Hole: 14"
  - Diameter: 15 1/2"



**PSW410 SHOWN**  
US PATENT #6,601,645  
US PATENT #D478,556

### SINGLE 4-OHM SUBWOOFERS

#### PSW401

##### 10" ALPHA 400 SERIES SUBWOOFER

- > Rated At 400 Watts RMS
- > 89.8dB Efficiency
- > Single 4-ohm 2" Voice Coil
- > Mounting Dimensions:
  - Depth: 5 1/2"
  - Through Hole: 9 3/8"
  - Diameter: 10 15/16"

#### PSW402

##### 12" ALPHA 400 SERIES SUBWOOFER

- > Rated At 500 Watts RMS
- > 90.8dB Efficiency
- > Single 4-ohm 2" Voice Coil
- > Mounting Dimensions:
  - Depth: 6"
  - Through Hole: 11 1/8"
  - Diameter: 12 7/8"



# 200 SERIES SUBWOOFERS

## STAMPED WOOFERS

From SQ to SPL, Alphasonik's 200 Series Woofers have got you covered. The use of exotic materials and design mastery have been combined to produce some of the best subwoofers on the market today. Optimized for small enclosures, these woofers will provide tight accurate bass, even at mind numbing levels, without taking up too much of your valuable space.

ALPHA  
200  
SERIES



## DUAL 4-OHM SUBWOOFERS

**PSW210 SHOWN**  
US PATENT #6,601,645  
US PATENT #D478,556

### PSW208

#### 8" ALPHA 200 SERIES SUBWOOFER

- > Heavy Gauge Stamped Steel Chrome Plated "Alpha" Basket
- > Motor Assembly Heat Sink
- > High Rigidity Inverted Dome Mineral-Filled Composite Cone
- > EPDM Surround for Enhanced Control at Extreme Temperatures
- > Flat Progressive Rate Nomex® Damper w/ Spiral-Woven Leads
- > 8-Gauge Lug-Lock Input Terminals
- > Rated at 200 Watts RMS
- > 85dB Efficiency
- > Frequency Response of 35Hz to 500Hz
- > 26 oz. Double-Stacked Magnet
- > Dual 4-ohm 1-1/2" Voice Coils
- > Mounting Dimensions:
  - Depth: 4 1/4"
  - Through Hole: 7 5/16"
  - Diameter: 8 9/16"

### PSW210

#### 10" ALPHA 200 SERIES SUBWOOFER

- > Heavy Gauge Stamped Steel Chrome Plated "Alpha" Basket
- > Motor Assembly Heat Sink
- > High Rigidity Inverted Dome Mineral-Filled Composite Cone
- > EPDM Surround for Enhanced Control at Extreme Temperatures
- > Flat Progressive Rate Nomex® Damper w/ Spiral-Woven Leads
- > 8-Gauge Lug-Lock Input Terminals
- > Rated at 300 Watts RMS
- > 86dB Efficiency
- > Frequency Response of 30Hz to 500Hz
- > 30 oz. Double-Stacked Magnet
- > Dual 4-ohm 2" Voice Coils
- > Mounting Dimensions:
  - Depth: 4 13/16"
  - Through Hole: 9 5/16"
  - Diameter: 11"

### PSW212

#### 12" ALPHA 200 SERIES SUBWOOFER

- > Heavy Gauge Stamped Steel Chrome Plated "Alpha" Basket
- > Motor Assembly Heat Sink
- > High Rigidity Inverted Dome Mineral-Filled Composite Cone
- > EPDM Surround for Enhanced Control at Extreme Temperatures
- > Flat Progressive Rate Nomex® Damper w/ Spiral-Woven Leads
- > 8-Gauge Lug-Lock Input Terminals
- > Rated at 400 Watts RMS
- > 90dB Efficiency
- > Frequency Response of 25Hz to 500Hz
- > 30 oz. Double-Stacked Magnet
- > Dual 4-ohm 2" Voice Coils
- > Mounting Dimensions:
  - Depth: 5 1/4"
  - Through Hole: 11 1/8"
  - Diameter: 12 7/8"

### PSW215

#### 15" ALPHA 200 SERIES SUBWOOFER

- > Heavy Gauge Stamped Steel Chrome Plated "Alpha" Basket
- > Motor Assembly Heat Sink
- > High Rigidity Inverted Dome Mineral-Filled Composite Cone
- > EPDM Surround for Enhanced Control at Extreme Temperatures
- > Flat Progressive Rate Nomex® Damper w/ Spiral-Woven Leads
- > 8-Gauge Lug-Lock Input Terminals
- > Rated at 500 Watts RMS
- > 90dB Efficiency
- > Frequency Response of 25Hz to 500Hz
- > 35 oz. Double-Stacked Magnet
- > Dual 4-ohm 2" Voice Coils
- > Mounting Dimensions:
  - Depth: 6 7/8"
  - Through Hole: 14"
  - Diameter: 15 1/2"

# 100 SERIES SUBWOOFERS

ALPHA  
100  
SERIES



**PSW110C SHOWN**  
US PATENT #6,601,645  
US PATENT #D478,556

## 100 SERIES STAMPED WOOFERS

Alphasonik's "more bang for the buck" attitude has always given the Alpha 100 Series the upper hand from the rest of the competition. The laminated non-pressed paper cone and 8-Gauge Lug-Lock input terminals set the 100 Series apart from other entry-level subwoofers. The Phenomenal performance did not change and it remains ideal for sealed, z ported and bandpass enclosures.

## DUAL 4-OHM SUBWOOFERS

### PSW110C

#### 10" ALPHA 100 SERIES SUBWOOFER

- > Heavy Gauge Stamped Steel Chrome Plated "Alpha" Basket
- > Motor Assembly Heat Sink
- > Laminated Non-Pressed Pulp Paper Cone
- > U.V. Treated Pressure Molded Foam Surround
- > 8-Gauge Lug-Lock Input Terminals
- > Rated at 200 Watts RMS
- > 89dB Efficiency
- > Frequency Response of 30Hz to 500Hz
- > Dual 4-ohm 1 1/2" Voice Coils
- > Mounting Dimensions:
  - Depth: 4 3/4"
  - Through Hole: 9 1/8"
  - Diameter: 10 1/4"

### PSW112C

#### 12" ALPHA 100 SERIES SUBWOOFER

- > Heavy Gauge Stamped Steel Chrome Plated "Alpha" Basket
- > Motor Assembly Heat Sink
- > Laminated Non-Pressed Pulp Paper Cone
- > U.V. Treated Pressure Molded Foam Surround
- > 8-Gauge Lug-Lock Input Terminals
- > Rated at 230 Watts RMS
- > 93dB Efficiency
- > Frequency Response of 30Hz to 500Hz
- > Dual 4-ohm 1 1/2" Voice Coils
- > Mounting Dimensions:
  - Depth: 5 1/8"
  - Through Hole: 11 1/4"
  - Diameter: 12 1/2"

### PSW115C

#### 15" ALPHA 100 SERIES SUBWOOFER

- > Heavy Gauge Stamped Steel Chrome Plated "Alpha" Basket
- > Motor Assembly Heat Sink
- > Laminated Non-Pressed Pulp Paper Cone
- > U.V. Treated Pressure Molded Foam Surround
- > 8-Gauge Lug-Lock Input Terminals
- > Rated at 400 Watts RMS
- > 93dB Efficiency
- > Frequency Response of 30Hz to 500Hz
- > Dual 4-ohm 2" Voice Coils
- > Mounting Dimensions:
  - Depth: 6 5/8"
  - Through Hole: 13 13/16"
  - Diameter: 15 1/4"



# AMPLIFIED ENCLOSURE



## **PBAT10**

### **10" AMPLIFIED VENTED BASS ENCLOSURE**

- ▶ High Quality Construction
- ▶ Rear Facing Tuned Port
- ▶ Black Suppleather Cover
- ▶ Bumped Back Plate
- ▶ Extended & Vented Pole Piece
- ▶ MOSFET Amplifier
- ▶ Remote Bass Control Knob
- ▶ RCA & Speaker Level Inputs
- ▶ Adjustable Low Pass Filter: 40Hz-250Hz
- ▶ Adjustable Bass Boost 0 - 18dB
- ▶ 10" Woofer w/ Mineral-Filled Composite Cone
- ▶ 100 Watts RMS
- ▶ 106dB Efficiency
- ▶ Frequency Response of 31Hz-150Hz
- ▶ Includes Complete Mounting Hardware & Wiring Kit
- ▶ Dimensions: (L x W x H)

26 x 15 3/8 x 14 1/4"

## **PMA10B**

### **REMOTE BASS BOOST CONTROL**

- ▶ Backlit Rotary Control Knob in Surface Mount Case with 12' Modular Cord

#### **INCLUDED**



# BANDPASS ENCLOSURES

## STANDARD FEATURES

Super Efficient Bandpass Tuned Enclosure | High Rigidity Inverted Dome Mineral-Filled Composite Cones | EPDM High-Excursion Surround | High Quality Solid MDF Construction with Routed Corners and Edges | Precision Sealed and Glued Dado-Rabbit Joints | Coal-Black Supple Vinyl Covering | Orange Interior Neon Lighting | Mirrored Interior Back Wall | Show-Quality Design, Competition Performance



### PB2110

#### 10" SINGLE BANDPASS SYSTEM

- > Tuned Port
- > Single 10" Woofer w/ Mineral-Filled Composite Cone
- > Power Handling: 300 Watts RMS
- > Sensitivity: 100dB
- > Frequency Response: 32Hz-150Hz
- > Single Terminal 4-ohm hook-up
- > Dimensions: (H x W x D) 14 x 16 x 18 1/4"

### PB2210

#### 10" DUAL BANDPASS SYSTEM

- > Tuned Port
- > Dual 10" Woofers w/ Mineral-Filled Composite Cones
- > Power Handling: 600 Watts RMS
- > Sensitivity: 103dB
- > Frequency Response: 32Hz-150Hz
- > Single Terminal 4-ohm hook-up
- > Dimensions: (H x W x D) 14 x 23 1/2 x 18 1/4"

### PB2310

#### 10" TRIPLE BANDPASS SYSTEM

- > Tuned Port
- > Triple 10" Woofers w/ Mineral-Filled Composite Cones
- > Power Handling: 900 Watts RMS
- > Sensitivity: 106dB
- > Frequency Response: 31Hz-150Hz
- > Single Terminal 4-ohm hook-up
- > Dimensions: (H x W x D) 14 x 35 x 18 1/4"



# BANDPASS ENCLOSURES



## **PB2112**

### **12" SINGLE BANDPASS SYSTEM**

- > Tuned Port
- > Single 12" Woofer w/ Mineral-Filled Composite Cone
- > Power Handling: 400 Watts RMS
- > Sensitivity: 101dB
- > Frequency Response: 28Hz-120Hz
- > Single Terminal 4-ohm hook-up
- > Dimensions: (H x W x D) 16 1/8 x 18 1/4 x 19 1/2"

## **PB2212**

### **12" DUAL BANDPASS SYSTEM**

- > Tuned Port
- > Dual 12" Woofers w/ Mineral-Filled Composite Cones
- > Power Handling: 800 Watts RMS
- > Sensitivity: 105dB
- > Frequency Response: 28Hz-120Hz
- > Single Terminal 4-ohm hook-up
- > Dimensions: (H x W x D) 16 1/8 x 27 1/2 x 19 1/2"

## **PB2312**

### **12" TRIPLE BANDPASS SYSTEM**

- > Tuned Port
- > Triple 12" Woofers w/ Mineral-Filled Composite Cones
- > Power Handling: 1200 Watts RMS
- > Sensitivity: 107dB
- > Frequency Response: 27Hz-120Hz
- > Single Terminal 4-ohm hook-up
- > Dimensions: (H x W x D) 16 1/8 x 41 x 19 1/2"



# 800 SERIES COMPONENTS

## STANDARD FEATURES FOR 800 SERIES

PTC Component Mid Carbon Reinforced High Denier Woven Glass Cone | Filleted Butyl Rubber Surround | Aluminum Billet Phase Plug | High Temperature Kapton® Voice Coil Former with Nomex® Insulation - 25mm | Oversized Flat Spider | Bottomless Motor Geometry | Proprietary High Gauge Steel Frame with Chrome-Plated Back Plate and Magnet Cover | PTS28 - Pure Silk Dome Tweeter in a Threaded Machined Aluminum Housing - 28mm | 14g Neodymium Magnet Slug in 55g Motor Assembly

## PCT COMPONENT CROSSOVER

Linkwitz-Riley Alignment with Zobel Impedance Compensation | Audiophile-Grade Mylar® Caps and Air Core Inductors | Gold-Plated, Solid Brass Compression Terminals (up to 12-Gauge)



### PCT4001

#### 4" COMPONENT 2-WAY SYSTEM

- > PCT 4" Component Mid w/ Carbon Reinforced Woven Glass Cone
- > PTS28 - 28mm Silk Dome Tweeter
- > PCT 2-Way Component Crossover
- > Power Handling: 130 Watts RMS
- > Frequency Response: 65Hz - 22kHz, +/-3dB
- > Sensitivity: 90dB 1w/1m

### PCT5026

#### 5.25" COMPONENT 2-WAY SYSTEM

- > PCT 5.25" Component Mid-Bass w/ Carbon Reinforced Woven Glass Cone
- > PTS28 - 28mm Silk Dome Tweeter
- > PCT 2-Way Component Crossover
- > Power Handling: 170 Watts RMS
- > Frequency Response: 55Hz - 22kHz, +/-3dB
- > Sensitivity: 91dB 1w/1m



### PCT6501

#### 6.5" COMPONENT 2-WAY SYSTEM

- > PCT 6.5" Component Mid-Bass w/ Carbon Reinforced Woven Glass Cone
- > PTS28 - 28mm Silk Dome Tweeter
- > PCT 2-Way Component Crossover
- > Power Handling: 200 Watts RMS
- > Frequency Response: 42Hz - 22kHz, +/-3dB
- > Sensitivity: 92dB 1w/1m





## ALPHA 800 SERIES



### PCT6551

#### 5.25" & 6.5" COMPONENT 3-WAY SYSTEM

- > PCT 6.5" Component Mid-Bass with Carbon Reinforced Woven Glass Cone
- > PCT 5.25" Component Mid with Carbon Reinforced Woven Glass Cone
- > PTS28 - 28mm Silk Dome Tweeter
- > PCT 3-way Component Crossover
- > Power Handling: 350 Watts RMS
- > Frequency Response: 45Hz - 25kHz, +/-3dB
- > Sensitivity: 93dB 1w/1m

PTT28 SHOWN



### PTT28

#### TITANIUM ELEMENT CAST ALUMINIUM TWEETER SYSTEM

- > Titanium Vapor-Deposited Polymer Dome Tweeter - 28mm
- > Machined Aluminum Flush & Surface Mounting Kits
- > Separate 12dB Crossover & Solid-State Tweeter Protection
- > Power Handling: 160 Watts RMS
- > Frequency Response: 2kHz - 22kHz, +/-3dB
- > Sensitivity: 93dB 1w/1m

PTS28 SHOWN



### PTS28

#### SILK DOME CAST ALUMINIUM TWEETER SYSTEM

- > Pure Silk Dome Tweeter - 28mm
- > Machined Aluminum Flush & Surface Mounting Kits
- > Separate 12dB Crossover & Solid-State Tweeter Protection
- > Power Handling: 160 Watts RMS
- > Frequency Response: 2kHz - 22kHz, +/-3dB
- > Sensitivity: 93dB 1w/1m

### PTT25

#### TITANIUM ELEMENT CAST ALUMINIUM TWEETER SYSTEM

- > Titanium Vapor-Deposited Polymer Dome Tweeter - 25mm
- > Machined Aluminum Flush & Surface Mounting Kits
- > Separate 12dB Crossover & Solid-State Tweeter Protection
- > Power Handling: 140 Watts RMS
- > Frequency Response: 2.5kHz - 22kHz, +/-3dB
- > Sensitivity: 92dB 1w/1m



### PTS25

#### SILK DOME CAST ALUMINIUM TWEETER SYSTEM

- > Pure Silk Dome Tweeter - 25mm
- > Machined Aluminum Flush & Surface Mounting Kits
- > Separate 12dB Crossover & Solid-State Tweeter Protection
- > Power Handling: 140 Watts RMS
- > Frequency Response: 2.5kHz - 22kHz, +/-3dB
- > Sensitivity: 92dB 1w/1m



### PTT19

#### TITANIUM ELEMENT CAST ALUMINIUM TWEETER SYSTEM

- > Titanium Vapor-Deposited Polymer Dome Tweeter - 19mm
- > Machined Aluminum Flush & Surface Mounting Kits
- > Separate 12dB Crossover & Solid-State Tweeter Protection
- > Power Handling: 120 Watts RMS
- > Frequency Response: 3kHz - 22kHz, +/-3dB
- > Sensitivity: 91dB 1w/1m



### PTS19

#### SILK DOME CAST ALUMINIUM TWEETER SYSTEM

- > Pure Silk Dome Tweeter - 19mm
- > Machined Aluminum Flush & Surface Mounting Kits
- > Separate 12dB Crossover & Solid-State Tweeter Protection
- > Power Handling: 120 Watts RMS
- > Frequency Response: 3kHz - 22kHz, +/-3dB
- > Sensitivity: 91dB 1w/1m



# COMPONENT SETS / TWEETERS

## STANDARD FEATURES FOR Z SERIES COMPONENTS

Titanium-Injected Polymer Cone | Pure Butyl Rubber Surround | 2-Layer Hi-Temp ASV Voice Coil | Oversized Poly-Woven Damper | Proprietary Heavy-Gauge Coated Steel Frame | Chrome-Plated Back Plate with Jewel Cut Badge | 1 Pair Tweeter Surface Mount Housings | 1 Pair Tweeter Flush Mount Housings | 1 Pair 12dB/Octave Crossover Networks | 4-ohm Impedance | Complete Mounting Hardware with Grilles and Templates

## Z SERIES



### PCZ65

#### 6.5" 2-WAY COMPONENT SPEAKER SYSTEM

- > Power Handling: 120 Watts RMS
- > Frequency Response: 35Hz - 25kHz
- > Sensitivity: 90dB 1w/1m
- > Mounting Depth: 2-1/2" (woofer)
- > Mounting Depth: 1" (tweeter - flush mount)

### PCZ50

#### 5.25" 2-WAY COMPONENT SPEAKER SYSTEM

- > Power Handling: 100 Watts RMS
- > Frequency Response: 35Hz - 25kHz
- > Sensitivity: 90dB 1w/1m
- > Mounting Depth: 2-1/8" (woofer)
- > Mounting Depth: 1" (tweeter - flush mount)

## Z SERIES TWEETERS

"Z" Series Tweeters are a perfect compliment to any system. You can choose the Titanium version for ultra bright and crisp highs or the Silk for a smooth and natural response. Balanced and matched outboard crossovers are included.



### PTZ25T

#### TITANIUM DOME TWEETER

- > Titanium Polymer Dome Tweeter - 25mm
- > Surface & Flush Mount Housing
- > Separate 12dB Crossover
- > Solid-State Tweeter Protection
- > Power Handling: 100 Watts RMS
- > Frequency Response: 2kHz - 22kHz
- > Sensitivity: 91.5dB 1w/1m



### PTZ25S

#### PURE SILK DOME TWEETER

- > Pure Silk Dome Tweeter - 25mm
- > Surface & Flush Mount Housing
- > Separate 12dB Crossover
- > Solid-State Tweeter Protection
- > Power Handling: 100 Watts RMS
- > Frequency Response: 2kHz - 22kHz
- > Sensitivity: 91dB 1w/1m

## ALPHASONIK CAPACITORS

While your car battery is supplying voltage to your amplifier, it is also supplying power to your entire vehicle, keeping it running and powering things like lights, air conditioning, and all the vehicle's electrical needs. When the bass hits and the lights dim, you can be sure of one thing, you need an Alphasonik Capacitor to make up for what your battery can't supply. Alphasonik Capacitors eliminate dimming lights and put the power where it belongs, right to your power-hungry amplifier.



### PCP12LED

#### 1.2 FARAD CAPACITOR

- > Smart Electronic Top & Solid Brass
- > Distribution Block (0-gauge)
- > 24-Volt Continuous / 30-Volt Surge
- > 4-Digit Voltage Display
- > 2 Orange LED Indicator Lights
- > Auto On/Off 45° Four-Digit Readout
- > Reverse Polarity Warning
- > Under/Over Voltage Warning
- > Voltage Display Calibration
- > Square Champagne Satin Metal Housing
- > Chrome-Plated Aluminum Mounting Brackets & Hardware
- > Dimensions: (L x W x H1 x H2)

### PCP50LED

#### 5.0 FARAD CAPACITOR

- > Smart Electronic Top & Solid Brass
  - > Distribution Block (0-gauge)
  - > 24-Volt Continuous / 30-Volt Surge
  - > 4-Digit Voltage Display
  - > 2 Orange LED Indicator Lights
  - > Auto On/Off 45° Four-Digit Readout
  - > Reverse Polarity Warning
  - > Under/Over Voltage Warning
  - > Voltage Display Calibration
  - > Square Champagne Satin Metal Housing
  - > Chrome-Plated Aluminum Mounting Brackets & Hardware
  - > Dimensions: (L x W x H1 x H2)
- 3 1/2 x 3 1/2 x 13 1/4 x 14 7/16"



### PCP50

#### 5.0 FARAD CAPACITOR

- > 24-Volt Continuous / 30-Volt Surge
  - > Square Champagne Satin Metal Housing
  - > Chrome-Plated Aluminum Mounting Brackets & Hardware
  - > Dimensions: (L x W x H1 x H2)
- 3 1/2 x 3 1/2 x 13 1/4 x 13 7/8"

### PCP12

#### 1.2 FARAD CAPACITOR

- > 24-Volt Continuous / 30-Volt Surge
  - > Square Champagne Satin Metal Housing
  - > Chrome-Plated Aluminum Mounting Brackets & Hardware
  - > Dimensions: (L x W x H1 x H2)
- 3 1/2 x 3 1/2 x 10 1/8 x 10 3/4"

## SERIES



### PCPZ1LED

#### 1.0 FARAD CAPACITOR

- > 20 Volt Continuous / 24-Volt Surge
- > 4-Digit Voltage Display
- > Auto On/Off Four-Digit Readout
- > 2 Orange LED Indicator Lights
- > Reverse Polarity Warning
- > Under/Over Voltage Warning
- > Voltage Display Calibration
- > Clear ABS Mounting Clamps



### PCP1KIT

#### 1.0 FARAD CAPACITOR

- > 20 Volt Continuous / 24-Volt Surge
- > 4-Digit Voltage Display
- > Auto On/Off Four-Digit Readout
- > 2 Orange LED Indicator Lights
- > Reverse Polarity Warning
- > Under/Over Voltage Warning
- > Voltage Display Calibration
- > Clear ABS Mounting Clamps
- > Distribution Block
- > 3' Power Cable w/ Terminal
- > 3' Ground Cable w/ Terminal
- > Mounting Hardware

# 800 SERIES FULL RANGE COMPONENTS

## STANDARD FEATURES

Titanium Injection Polypropylene Cone with Butyl Rubber Surround | High Temperature Kapton® Voice Coil Former with Nomex® Insulation | Pure Silk Tweeter (and Mid on PF69) | Separates Come with Quick-Lock Removable Tweeter and Phase Plug (Non-removable on PF69), Flush and Surface Mounting Kits | Outboard Crossover with Solid-State Tweeter Protection with Audiophile-Grade Parts and Topology-featuring Butterworth Alignment | Oversized Poly-Cotton Spider and Bottomless Motor Geometry



### PF69

#### 6 X 9" 3-WAY FULL RANGE SYSTEM

- > Kapton® Voice Coil Former - 32mm
- > Pure Silk Dome Tweeter - 25mm
- > Pure Silk Cone Mid - 35mm
- > Power Handling: 280 Watts RMS
- > Frequency Response: 43Hz - 22kHz, +/-3dB
- > Sensitivity: 94dB 1w/1m



### PF69C

#### 6 X 9" 2-WAY FULL RANGE SYSTEM

- > Kapton® Voice Coil Former - 32mm
- > Pure Silk Dome Tweeter - 25mm
- > Power Handling: 220 Watts RMS
- > Frequency Response: 43Hz - 22kHz, +/-3dB
- > Sensitivity: 93dB 1w/1m



### PF41C

#### 4 X 10" 2-WAY FULL RANGE SYSTEM

- > Kapton® Voice Coil Former - 25mm
- > Pure Silk Dome Tweeter - 25mm
- > Power Handling: 140 Watts RMS
- > Frequency Response: 65Hz - 22kHz, +/-3dB
- > Sensitivity: 93dB 1w/1m



### PF68C

#### 6 X 8" OR 5 X 7" 2-WAY FULL RANGE SYSTEM

- > Kapton® Voice Coil Former - 25mm
- > Pure Silk Dome Tweeter - 25mm
- > Power Handling: 200 Watts RMS
- > Frequency Response: 55Hz - 22kHz, +/-3dB
- > Sensitivity: 92dB 1w/1m



### PF65C

#### 6.5" 2-WAY FULL RANGE SYSTEM

- > Kapton® Voice Coil Former - 25mm
- > Pure Silk Dome Tweeter - 25mm
- > Power Handling: 180 Watts RMS
- > Frequency Response: 50Hz - 22kHz, +/-3dB
- > Sensitivity: 92dB 1w/1m



### PF52C

#### 5.25" 2-WAY FULL RANGE SYSTEM

- > Kapton® Voice Coil Former - 25mm
- > Pure Silk Dome Tweeter - 25mm
- > Power Handling: 140 Watts RMS
- > Frequency Response: 60Hz - 22kHz, +/-3dB
- > Sensitivity: 91.5dB 1w/1m

# 800 SERIES FULL RANGE COMPONENTS



## PF46C

### 4 X 6" 2-WAY UNIVERSAL MOUNT FULL RANGE SYSTEM

- > Kapton® Voice Coil Former - 25mm
- > Pure Silk Dome Tweeter - 25mm
- > Power Handling: 120 Watts RMS
- > Frequency Response: 65Hz - 22kHz, +/-3dB
- > Sensitivity: 91dB 1w/1m



## PF40C

### 4" 2-WAY FULL RANGE SYSTEM

- > Kapton® Voice Coil Former - 25mm
- > Pure Silk Dome Tweeter - 25mm
- > Power Handling: 120 Watts RMS
- > Frequency Response: 70Hz - 22kHz, +/-3dB
- > Sensitivity: 91dB 1w/1m



## PF35C

### 3.25" 2-WAY FULL RANGE SYSTEM

- > Kapton® Voice Coil Former - 25mm
- > Pure Silk Dome Tweeter - 25mm
- > Power Handling: 100 Watts RMS
- > Frequency Response: 80Hz - 22kHz, +/-3dB
- > Sensitivity: 90dB 1w/1m



PF65C SHOWN



# Z-SERIES FULL RANGE

## STANDARD FEATURES

Titanium Injected Polymer Cone | Filleted Butyl Rubber Surround | 360° Swivel Tweeter | Black Anodized Aluminum Insulated Voice Coil Former | Titanium Vapor-Deposition Kapton® Tweeter | Integrated Crossover with Solid-State Tweeter Protection | Oversized Poly-Cotton Spider and Bottomless Motor Geometry | Proprietary High-Gauge Steel Frame with Chrome-Plated Back Plate and Magnet Cover

SERIES



### PFZ693

#### 6 X 9" 3-WAY FULL RANGE SYSTEM

- > Black Anodized Aluminum Voice Coil Former - 32mm
- > Titanium Vapor-Deposition Dome Tweeter - 25mm
- > Titanium Vapor-Deposition Cone Mid - 35mm
- > Integrated Crossover w/ Tweeter Protection
- > Power Handling: 240 Watts RMS
- > Frequency Response: 46Hz - 22kHz, +/-3dB
- > Sensitivity: 94dB 1w/1m



### PFZ692

#### 6 X 9" 2-WAY FULL RANGE SYSTEM

- > Black Anodized Aluminum Voice Coil Former - 32mm
- > Titanium Vapor-Deposition Dome Tweeter - 28mm
- > Integrated Crossover w/ Tweeter Protection
- > Power Handling: 200 Watts RMS
- > Frequency Response: 46Hz - 22kHz, +/-3dB



### PFZ410

#### 4 X 10" 2-WAY FULL RANGE SYSTEM

- > Black Anodized Aluminum Voice Coil Former - 25mm
- > Titanium Vapor-Deposition Dome Tweeter - 25mm
- > Integrated Crossover w/ Tweeter Protection
- > Power Handling: 120 Watts RMS
- > Frequency Response: 70Hz - 22kHz, +/-3dB
- > Sensitivity: 93dB 1w/1m



### PFZ680

#### 6 X 8" OR 5 X 7" 2-WAY FULL RANGE SYSTEM

- > Black Anodized Aluminum Voice Coil Former - 25mm
- > Titanium Vapor-Deposition Dome Tweeter - 25mm
- > Integrated Crossover with Tweeter Protection
- > Power Handling: 180 Watts RMS
- > Frequency Response: 55Hz - 22kHz, +/-3dB
- > Sensitivity: 92dB 1w/1m

# Z-SERIES FULL RANGE

## PFZ652

### 6.5" 2-WAY FULL RANGE SYSTEM

- > Black Anodized Aluminum Voice Coil Former - 25mm
- > Titanium Vapor-Deposition Dome Tweeter - 25mm
- > Integrated Crossover w/ Tweeter Protection
- > Power Handling: 160 Watts RMS
- > Frequency Response: 55Hz - 22kHz, +/-3dB
- > Sensitivity: 92dB 1w/1m

## PFZ525

### 5.25" 2-WAY FULL RANGE SYSTEM

- > Black Anodized Aluminum Voice Coil Former - 25mm
- > Titanium Vapor-Deposition Dome Tweeter - 25mm
- > Integrated Crossover w/ Tweeter Protection
- > Power Handling: 120 Watts RMS
- > Frequency Response: 65Hz - 22kHz, +/-3dB
- > Sensitivity: 91.5dB 1w/1m

## PFZ460

### 4 X 6" 2-WAY UNIVERSAL MOUNT FULL RANGE SYSTEM

- > Black Anodized Aluminum Voice Coil Former - 25mm
- > Titanium Vapor-Deposition Cone/Dome Tweeter - 25mm
- > Integrated Crossover w/ Tweeter Protection
- > Power Handling: 100 Watts RMS
- > Frequency Response: 70Hz - 22kHz, +/-3dB
- > Sensitivity: 91dB 1w/1m

## PFZ400

### 4" 2-WAY FULL RANGE SYSTEM

- > Black Anodized Aluminum Voice Coil Former - 25mm
- > Titanium Vapor-Deposition Dome Tweeter - 25mm
- > Integrated Crossover w/ Tweeter Protection
- > Power Handling: 100 Watts RMS
- > Frequency Response: 75Hz - 22kHz, +/-3dB
- > Sensitivity: 91dB 1w/1m

## PFZ352

### 3.25" 2-WAY FULL RANGE SYSTEM

- > Black Anodized Aluminum Voice Coil Former - 25mm
- > Titanium Vapor-Deposition Dome Tweeter - 25mm
- > Integrated Crossover w/ Tweeter Protection
- > Power Handling: 80 Watts RMS
- > Frequency Response: 85Hz - 22kHz, +/-3dB
- > Sensitivity: 90dB 1w/1m

360° SWIVEL TWEETER



# GRILLES



**PGR15XC**  
**15" CHROME-PLATED GRILLES**  
 > Two-Piece Universal Grille w/  
 Snap Ring Mounting  
 > One Pair High Excursion Height



**PGR12XC**  
**12" CHROME-PLATED GRILLES**  
 > Two-Piece Universal Grille w/  
 Snap Ring Mounting  
 > One Pair High Excursion Height



**PGR10XC**  
**10" CHROME-PLATED GRILLES**  
 > Two-Piece Universal Grille w/  
 Snap Ring Mounting  
 > One Pair High Excursion Height



P R O U D M E M B E R O F



Copyright 2005 Alphasonik, Inc. All rights reserved. Any unauthorized reproduction or use of Alphasonik logos, images or design elements is strictly prohibited by law. Specifications subject to change without notice.