

# **TELEWELL TW-640**

**Firewall VPN DSL/Cable Router  
with 4-Port Switch**

Quick Start Guide



For more detailed instructions on configuring and using the DSL/Cable IP-Sharing Router, please refer to the on-line manual.

This device is suitable for Elisa ADSL, Sonera Koti ADSL and many more system in which is needed PPPoE, DHCP client or Fixed IP.

**Default settings:**

DHCP client of TW-640 will take 1 IP address from ADSL operator with TW-EA701 modem.

DHCP server will share automatically 1 IP for workstations.

NAT protocoll is used as on default.

DHCP client has to be default in workstations.

## **TELEWELL TW-640 Features**

**SOHO firewall to automatically detect and block the DoS (Denial of Service) attack.**

**Security logging for hacker's attack with timestamp.**

**All PCs in a LAN can share the connection using one ISP account.**

***Support VPN (PPTP client or IPSec & PPTP pass through) to provide a secure Internet connection***

***Software DMZ host setting.***

Web-based Firmware upgrade.

Web-based configuration and Management.

**Remote configuration and management from WAN interface.**

4 ports 10/100 Mbps N-way Ethernet Switch.

**Automatic MDI/MDIX crossover for 100BASE-TX and 10BASE-T ports.**

**Support Fast Ethernet Switch Function.**

PPP over Ethernet (PPPoE) support for DSL connection.

NAT for sharing single IP address

DHCP Server and Client.

**DHCP server allocates up to 253 client IP addresses.**

SNTP for getting network real time clock.

Internet applications such as Web browser, ICQ, FTP, Telnet, E-Mail, AoE, News, NetMeeting, Ping, mIRC, AOE, VDOLive Player, PCAnywhere...

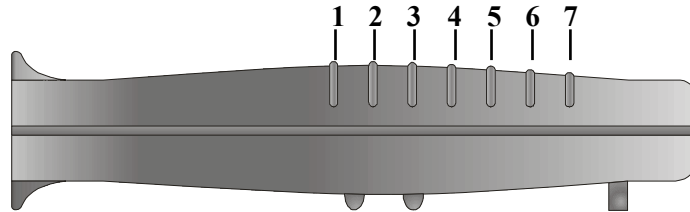
**DNS relay.**

**Virtual server.**

**Rich packet filters**

**Support Windows 95 / 98 / ME / NT / 2000 / XP, Unix, and Mac.**

## The Front Panel LEDs



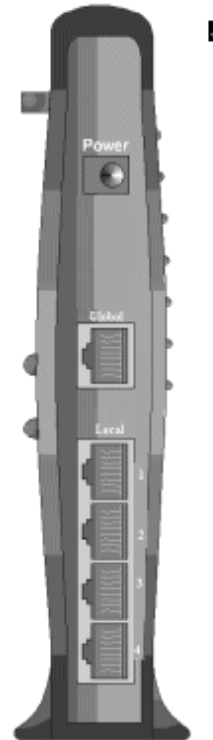
LED		Meaning
1	<b>Power</b>	Lit green when AC power is connected.
2	<b>LAN 1</b>	Lit green when connected at 100 Mbps. Lit orange when connected at 10 Mbps. Flashes when sending/receiving data.
3	<b>LAN 2</b>	
4	<b>LAN 3</b>	
5	<b>LAN 4</b>	
6	<b>WAN</b>	Lit when connected to a WAN device. Flashes when sending/receiving data.
7	<b>PPP/SYS</b>	Lit green when using PPPoE. Lit orange when system ready.

## The Rear Ports

**Power (jack)** Connect the supplied power adapter to this jack.

**Global (RJ-45 connector)** Connect an UTP Ethernet cable or crossover cable to this port when connecting to the Internet or making other WAN connections.

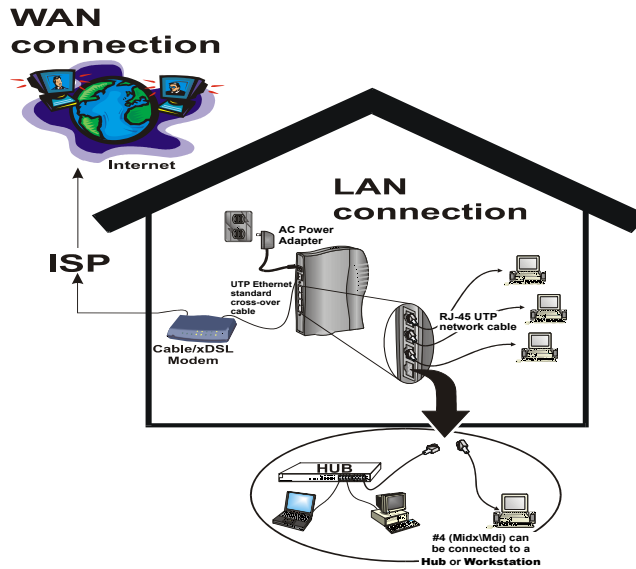
**Local 1- 4 (RJ-45 connector)** Connect an UTP Ethernet cable to this four ports when connecting to a LAN of 10Mbps or 100Mbps such as an office or home network.



## Connecting the TELEWELL TW-640

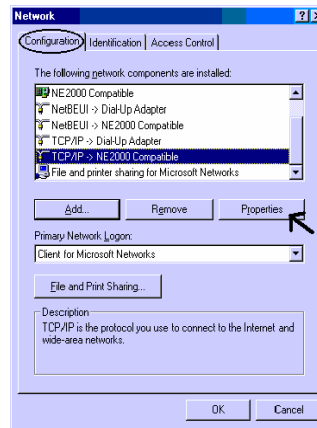
Refer to the following to connect the TELEWELL TW-640 to a WAN (Wide Area Network) and a LAN (Local Area Network):

1. Connect the TELEWELL TW-640 as shown below.
2. Power on the device.
3. Ensure the Power, LAN, and WAN LEDs are lit.

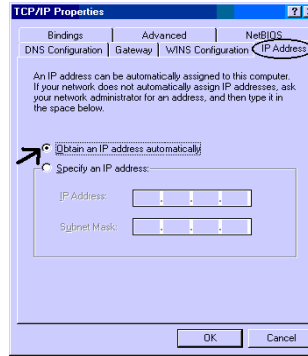


## Configuring PC in Windows 95/98/ME

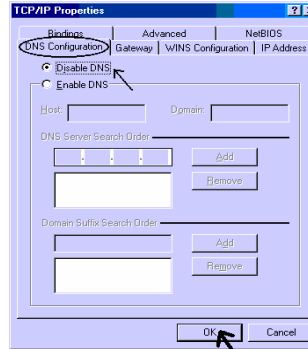
1. Go to **Start/Settings/Control Panel**. In the Control Panel double-click on **Network** and choose the **Configuration** tab.
2. Select **TCP/IP -> NE2000 Compatible**, or any Network Interface Card (NIC) in your PC.



3. Select the **Obtain an IP address automatically** radio button.



4. Then select the **DNS Configuration** tab.
5. Select the **Disable DNS** radio button and click **Ok** to finish the configuration.



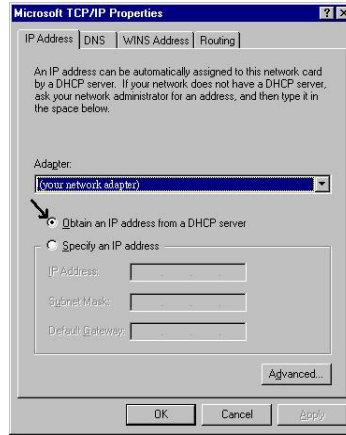
## Configuring PC in Windows NT4.0

1. Go to **Start/Settings/Control Panel**. In the Control Panel double-click on **Network** and choose the **Protocols** tab.
2. Select **TCP/IP Protocol** and click **Properties**.



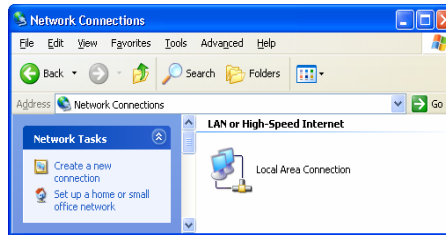


3. Select the **Obtain an IP address from a DHCP server** radio button and click **Ok**.

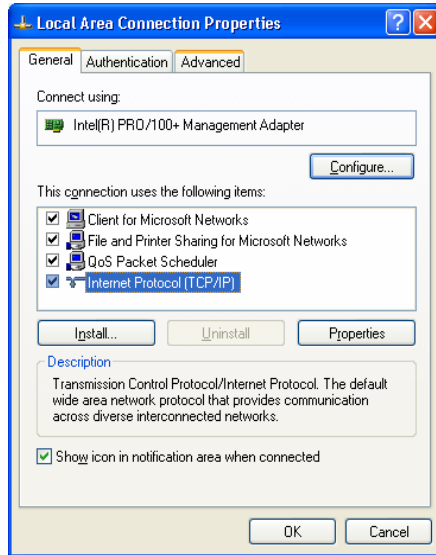


## Configuring PC in Windows 2000/Xp

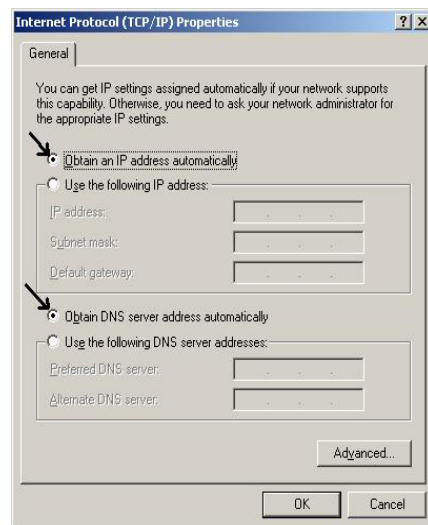
1. Go to **Start/Settings/Control Panel**. In the Control Panel double-click on **Network and Dial-up Connections**.
2. Double-click **Local Area Connection**.
3. In the **Local Area Connection Status** window click **Properties**.



4. Select **Internet Protocol (TCP/IP)** and click **Properties**.



5. Select the **Obtain an IP address automatically** and the **Obtain DNS server address automatically** radio buttons.
6. Click **Ok** to finish the configuration.



## Configuring the TELEWELL TW-640



To configure this device, you must have IE 4.01 or above installed.

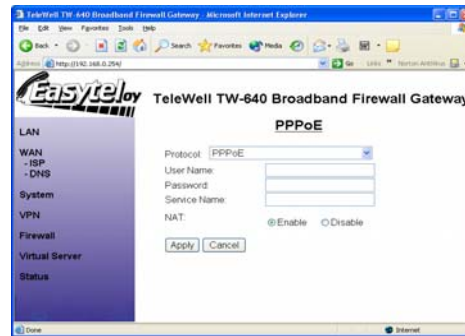
1. Open web browser and type <http://192.168.1.254> in the browser's address box. This number is the default IP address for this router. Press **Enter**.



2. A user name and password prompt will appear. Click **Ok**. **Default is;** No user name and password) Checng in System / Password area **and write down the new password.**



3. Select from the following:
  1. xDSL user (Dynamic): Users who are using PPPoE.



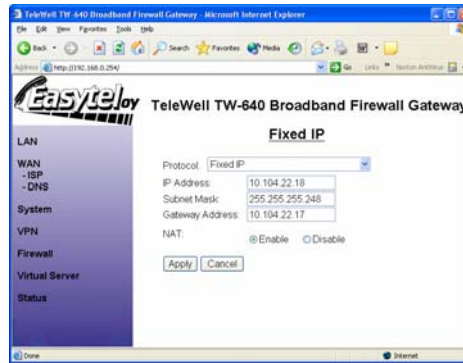
**II . Cable users (Dynamic):**

Users who do not have static IP addresses from their ISPs.

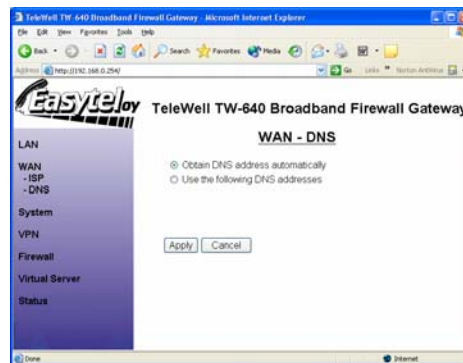


**II . xDSL/Cable users (Static):**

Users who have obtained at least one dedicated IP address from an ISP.



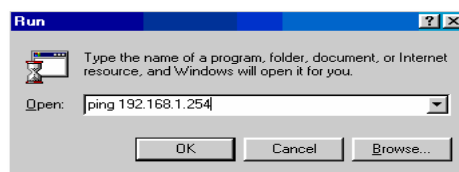
Please also check that DNS setting is correct (Automatic is the best setting).



4. Click **Apply** to store all configurations. The device will reboot automatically.

## Connecting to the Internet

To see if the IP sharing router is visible on the local network, go to **Start/Run**. In the Run dialog box type “**Ping 192.168.1.254**” and press **Ok**.



**Open your Web browser to begin surfing the Internet.**