

# Acesonic®

THE LEADER IN PROFESSIONAL SING-ALONG EQUIPMENT

LIVE LIFE **live**



**PRODUCT  
CATALOG**

**2011**

[WWW.ACESONIC.COM](http://WWW.ACESONIC.COM)



## ABOUT US

**B**ased in Southern California, Acesonic is the leading manufacturer of karaoke products, providing a diverse selection of high-quality karaoke equipment to enthusiasts all across the world. Since the company's inception in 2001, Acesonic has been supplying the most modern and innovative products while remaining competitive in our pricing. As a result, consumers have begun to equate our brand name with excellence as well as affordability.

This year Acesonic continues to offer a wide selection of karaoke players, mixers, amplifiers, speakers, microphones and other related accessories. Our 2011 product line is proud to introduce several new products which feature the latest in karaoke and audio technology.

Over the years, Acesonic has developed one of the best reputations in the business. Our commitment to upholding excellence and leadership in the karaoke industry is shared by every aspect of the company, from production to sales, as we strive to continuously expand and improve to meet the demands of an ever-growing karaoke market from now and beyond.

## JOIN THE "ACE" TEAM!

**a**cesonic is always looking for new dealers and distributors. Karaoke is a fast-growing industry and the demand for quality, affordable karaoke hardware and software is as high as ever! Let us help you capitalize on this demand and convert opportunity into growth for your business.

As a dealer, you will enjoy:

- High profit margins
- Lifetime, year-round customer, technical and repair support
- 1 year manufacturer warranty for your customers
- Unlimited stock rotations
- Free display units and advertising materials
- No-hassle return service
- Convenient payment terms
- Product and sales training
- Drop-shipping for your customers

If your business meets the requirements listed below, don't wait...apply today! The application process is quick and easy, and can be completed within one day.

Dealer requirements:

- Government recognized resale certificate or seller's permit (or equivalent for your area)
- Proof of physical or online store
- A completed and signed reseller's declaration form (we will provide the form)
- A completed payment authorization form (we will provide the form)
- Orders placed in carton quantities
- Minimum first order of \$1,000



**PS-410**  
400-Watt Professional  
10" Powered Stereo  
Speaker System  
see page 9



**DGX-210**  
Multi-Format Karaoke Player  
with Digital Recording  
& CD+G to MP3G Converter  
see page 5



**KOD-1000**  
Karaoke Music Jukebox System  
with 500GB Hard Drive  
see page 2



**INNOVATION, COMPATIBILITY,  
FLEXIBILITY, VALUE & DESIGN  
FOR MAXIMUM PERFORMANCE  
& ENTERTAINMENT IN MIND!**

Acesonic USA Inc.  
161 S. 8th Ave.  
City of Industry, CA 91746

phone: 888.976.7464  
fax: 626.820.0625  
email: sales@acesonic.com

[www.acesonic.com](http://www.acesonic.com)



## MAP POLICY

In order to maintain brand integrity and quality, Acesoic has established a Minimum Advertised Price (MAP) policy that authorized dealers must adhere to when advertising and marketing Acesoic products. All authorized Acesoic resellers must agree to the following MAP policy:

All advertised prices, including but not limited to print, broadcast, internet, billboard and other media formats, must be at or above Acesoic's MAP pricing. Our MAP pricing can be obtained through our designated Acesoic sales representative. Resellers are not required to list prices in advertising, however, if it is listed it must be at or above our MAP prices. While resellers are responsible for ensuring their advertised prices are at or above MAP pricing, resellers are also free to set the actual resale price of Acesoic products however they wish.

Failure to comply with our MAP policy may result in loss of authorized reseller/dealer status, either temporarily or permanently. The decision to revoke, suspend or terminate relationship with reseller for MAP policy violations will be at the sole discretion of Acesoic, and may occur without warning.

## DROP SHIP POLICY

Acesoic is proud to offer drop shipping for our resellers to anywhere in the US and Canada, with no minimum order and a small drop ship fee. In-stock items will ship within one (1) business day.

UHF-4000R  
Professional  
Rechargeable  
4-Channel Module  
Wireless Microphone  
System  
see page 20



MS-430  
Dual-Purpose Boom  
Microphone Stand  
see page 27



### CHECK-OUT WHAT'S INSIDE!

#### HARD DRIVE PLAYERS



p.1

#### MULTI-FORMAT PLAYERS



p.4



#### PORTABLE PLAYERS

p.7



#### SPEAKER SYSTEMS

p.9

#### MIXING AMPLIFIERS



p.11

#### MIXERS



p.18



#### MICROPHONES

p.20



#### PORTABLE SOUND SYSTEM

p.25



#### ACCESSORIES

p.27



#### CLUB SYSTEM PACKAGES

Back Page

1 Year Warranty on all our products

# Powerful Hard Drive M

## KOD-1200

Karaoke Music Jukebox System  
with Dual Hard Drives

HARD DRIVE PLAYERS



### Features:

- Full function Karaoke and Music Jukebox
- Load all your MP3G songs using the included song editor software
- 2 Hard Drive Slots - Expand up to a total of 4TB
- Pull-Out hard drive for easy upgrade or file transfer through PC
- Unlimited song library expansion with high capacity hard drive
- Disc Capturing Capability
  - Transfer your favorite CDG, VCD, or DVD discs directly from the disc tray to the hard drive
- On-Screen Song Selection
- Full function remote controller
- Direct playback from the hard drive using pre-assigned song numbers
- Advanced song search function:
  - Supports ordering songs by song number, name, artist or by category
- USB Port
- 2 Microphone inputs with independent volume controller
- Total solution for karaoke businesses with coin acceptor interface
- Small and compact design, no larger than a regular multi-format player
- Easy to use full function remote control
- Progressive scan video output
- Large song reservation memory
- Random play, auto play, repeat play
- On-screen song selection by using the remote control & keyboard
- 14-step digital key controller
- Supports up to a 2,000GB hard drive in each slot
- Supports multiple languages with upgradeable fonts

### Specifications:

- Compatible Disc Formats: DVD, SVCD, CD+G, VCD, Audio-CD, CD-R, CD-RW, DVD-R, DVD-RW
- Playable Formats: MP3, MP3G, MPEG1, MPEG2, VOB, AVI, MP4, DivX
- Power Supply: AC 100V - 220V (50/60Hz)
- Power Consumption: Less than 54W
- Weight: 5.1lbs
- Dual 1/4" Microphone Inputs
- Frequency Response: 20Hz - 20KHz
- Signal-to-Noise Ratio: >85dB
- **Hard Drive Size: 3.5" SATA- 500GB IDE 7200RPM Preformatted (Upgradeable to 4TB Hard Drive, 2TB each slot)**
- **Maximize Hard Drive Size: 2,000GB Single Drive Slot**
- Audio Outputs: L/R, Coaxial, Optical, 5.1 Surround Sound
- Video Outputs: Component Video, Composite Video, S-Video, VGA
- ±7 Step Key Control
- Built-in Serial Port to support Coin / Dollar Bill Acceptor
- Built-in Hard Drive fan
- Dimensions: 17" L x 12" W x 3.5" H
- Weight: 10.4 lbs
- 1 Year Manufacturer Warranty

### INCLUDES

- Remote Control
- RCA Cable
- 2 AAA Batteries

Load any 2 KOD-1000  
Hard Drives in this player!  
Upgraded version of the KOD-1000.  
KOD-1000 compatible.

Accessible hard drive bay contains  
two hard drive slots. Easily remove  
or upgrade your hard drives!



### KOD-1200 Rear Panel:

1. Coin Acceptor Interface
2. Infrared Extension Input
3. 5.1 Surround Sound Outputs
4. S-Video Output
5. Optical Output
6. Coaxial Output
7. Video Output
8. Component Outputs



# Music Jukebox Systems

## KOD-1000 Karaoke Music Jukebox System with 500GB Hard Drive



HARD DRIVE PLAYERS

### Features:

- Full function Karaoke and Music Jukebox
- Load all your MP3G songs using the included song editor software
- Multi-format karaoke player compatible with a wide array of disc formats
- Pull-Out hard drive for easy upgrade or file transfer through PC
- Unlimited song library expansion with high capacity hard drive
- On-Screen Song Selection
- Large full function remote with A-Z keypad & PS/2 keyboard (not included) controls all disc and karaoke function for easy song selection
- Direct playback from the hard drive using pre-assigned song numbers
- Advanced song search function:
  - Supports ordering songs by song number, name, artist or by category
  - Store your own favorite songs
- USB Port - JPG, MP3, MPEG1, MPEG2
- 2 Microphone inputs with independent volume controller
- Total solution for karaoke businesses with coin acceptor interface
- Small and compact design, no larger than a regular multi-format player
- Supports PS/2 keyboard for easy UI operation & data input
- Progressive scan video output
- Large song reservation memory
- Random play, auto play, repeat play
- $\pm 7$  Steps digital key control
- Supports up to a 2,000GB hard drive
- Supports multiple languages with upgradeable fonts

### Specifications:

- Compatible Disc Formats: DVD, SVCD, CD+G, VCD, Audio-CD, MP3, MPEG, CD-R, CD-RW, DVD-R, DVD-RW
- Power Supply: AC 100V - 220V (50/60Hz)
- Power Consumption: Less than 54W
- Dual 1/4" Microphone Inputs
- Frequency Response: 20Hz - 20KHz
- Signal-to-Noise Ratio: >85dB
- **Hard Drive Size: 3.5" SATA- 500GB IDE 7200RPM Preformatted (Upgradeable to 2TB Hard Drive)**
- **Maximize Hard Drive Size: 2,000GB Single Drive Slot**
- Audio Outputs: L/R, Coaxial, Optical, 5.1 Surround Sound
- Video Outputs: Component Video, Composite Video, S-Video, VGA
- Built-in Serial Port to support Coin / Dollar Bill Acceptor
- Built-in Hard Drive fan
- Dimensions: 17"L x 10"W x 2"H
- Weight: 5.1lbs
- 1 Year Manufacturer Warranty

### INCLUDES

- Remote Control
- RCA Cable
- 2 AAA Batteries

### KOD-1000 Rear Panel:

1. 5.1 Surround Sound Audio Outputs
2. RCA Video Output
3. S-Video Output
4. Optical Output
5. PS/2 Keyboard Input
6. VGA Output
7. Coaxial Output
8. Component Outputs



**Acesonic**

2

The Leader In Professional Sing-Along Equipment

# MUSIC JUKEBOX SYSTEMS

## KOD-1100

Karaoke Music Jukebox System  
with 2TB Hard Drive  
& Touchscreen Song Selection



### Features:

- Full function Karaoke and Music Jukebox
- Transfer DVDs, VCDs, CD+Gs, MP3Gs, DivX, AVI and audio CDs into the hard drive
- Built-in removeable 2TB Hard Drive
- Single or Dual Screen for selecting songs
- Update/Add songs (Via SD card or connect your KOD-1100 to your PC via the USB cable)
- Supports MP3G, MPEG1(dat, mpeg)/MPEG2 (vob, mpeg)/MPEG4 (Avi, Divx, Xvid)/MP3/JPEG
- Supports mouse, remote, and touch screen to select songs
- Select songs in different ways (artist, song title, language, song number etc.)
- Direct playback from hard drive using pre-assigned song number
- USB port for easy upgrade or file transfer through PC
- Directly access function keys on the front panel
- Instant access to song library by remote control
- Random play, auto play, repeat play
- On-Screen song selection using touch-screen or through the provided songbook
- Update songs through SD Card

### Specifications:

- Power AC 100 - 220V 50/60Hz
- Power Consumption: Less than 54W
- Audio: 2 RCA audio
- Video: 2 RCA, 1 VGA
- NTSC/ PAL/ AUTO
- Dimensions: 17"L x 15.35"W x 4.75"H
- Weight 7.9lbs
- 1 Year Manufacturer Warranty

### Optional Accessories



Touch Screen 25' or 50' Extension Cable Set



Control the KOD-1100 and choose songs through this Acesonic 19" touch screen monitor to play them on your second display and have the ultimate dual screen setup!

### INCLUDES

- Remote Control
- RCA Cable
- 2 AAA Batteries

### KOD-1100 Rear Panel:

1. Mouse Input
2. Keyboard Input
3. Touchscreen Input
4. 2 TV Outputs
5. Coin Acceptor Interface
6. USB Port
7. VGA Output 1
8. VGA Output 2 (to touchscreen TV)



# CONVERT CD+G to MP3G at 4X the SPEED

**DGX-211**  
Professional Multi-Format  
Digital Karaoke Recorder/Player

MULTI-FORMAT PLAYERS



## Features:

- Convert CD+G to MP3G at 1x or 4x the speed
- HDMI Connector outputs video up to 1080p
- Vocal Output to HDMI & RCA
- Display video from HDMI and RCA outputs at the same time
- Sing & record in MP3G
- Recognizes up to 10,000 songs on USB drives or SD cards
- Reads faster with it's USB 2.0 interface
- Generate songlist with song number for all songs in USB/ SD/ Disc
- Plays back last recorded song with the "Songlist Function" in a touch of a button. No waiting.
- New Cue On/Cue Off function makes it stop after each MP3G/CD+G song
- Smart memory lets you resume any movie from where it stopped when you turned off the machine. Turn it on and resume your movie. No need to start over and forward the movie to the desired point.
- DivX 7 compatible
- Using the latest processor with increased memory, gives a smoother, faster and "jitter" free recording!
- One button shortcut to display music, pictures or videos only in a folder.
- Built-in Equalizer
- Rackmountable - Kit not included

## Specifications:

- Direct Access Front Panel Design: Open, Close, Play, Pause, Previous, Next, 0 - 9 Number, Key, Microphone Volume, Echo Volume
- Record your vocals or performances into MP3
- ± 6 Steps digital key control
- Progressive Scan up to 1080p HD Video Output
- Video Output: Composite Video, S-Video, Component Video, VGA Video
- Audio Output: 2 Channel (L/R), 5.1 Channel, Optical and Coaxial
- Two 1/4" Microphone Inputs with Individual Volume Control
- Video Signal System: PAL/ NTSC/ AUTO
- Standard 2U High - Rackmountable (kit not included)
- Power: 100 - 240V AC 50/60Hz
- Dimensions: 17" L x 8.5" W x 3.25" H
- Weight: 3.25 Lbs
- 1 Year Manufacturer Warranty

## INCLUDES

- Remote Control
- Power Cord
- RCA Cable

## DGX-211 Rear Panel:

1. VGA Output
2. 5.1 Surround Sound Audio Outputs
3. Component Video Outputs
4. Coaxial Output
5. HDMI Output
6. S-Video Output
7. Optical Output
8. Composite Video Output



**Acesonic**

4

The Leader In Professional Sing-Along Equipment

# WORLD'S FIRST PLAYER with CD+G-to-MP3G CONVERTER

## DGX-210

Multi-Format Karaoke Player  
with Digital Recording  
& CD+G to MP3G Converter



### Features:

- Plays most downloaded MP3G format karaoke tracks.
- Create and rename MP3G files from CD+G, USB device or SD card
- Compatible Formats: Audio CD, DVD-Video, VCD, CD+G, MP3G, JPEG, MP3, MPEG4, WMA, DivX (3.\* - 6.0), Xvid
- Rip and copy any of your favorite tracks to a memory card and keep it forever without the need of the original disc to play your tracks with the CD+G to MP3G Converting Function
- You can save your favorite songs to a USB device or SD card by ripping from a disc
- You no longer need an expensive PC and a special CD-ROM to convert your discs to MP3G tracks
- You can record your singing with a CD+G or MP3G track and it will rip the graphic when it's recording
- Rackmountable - Kit included

### Specifications:

- Compatible with MP3, CD, VCD, CD+G, MP3G, DVD
- Record singing while playing CD, VCD, CDG, MP3G
- Create & Rename MP3G files from CD+G, USB device or SD card
- Two microphone inputs with individual volume control
- Professional karaoke mixer with echo volume adjustment
- $\pm$  6 Step key control
- Full function front panel design for easy operation.
- Video Signal: PAL/NTSC/AUTO
- Singing scoring game
- Progressive scan up to 720p HD video output
- Video output: Composite video, S-video, component video
- Audio output: 2 channel, 5.1 channel, optical and coaxial
- FDA approved
- Power AC 100 - 240V 50/60Hz
- Dimensions: 17"L x 9"W x 2"H
- Weight: 4.5 lbs
- 1 Year Manufacturer Warranty

### INCLUDES

- Remote Control
- Power Cable
- RCA Cable
- Rack-Mount Kit

### DGX-210 Rear Panel:

1. 5.1 Surround Sound Audio Outputs
2. Coaxial Output
3. RCA Video Output
4. S-Video Outputs
5. Optical Output
6. Component Video Outputs





# DGX-109

Multi-Format Karaoke Player  
with USB, SD/USB Reader  
+ MP3 Recording



### Features:

- Progressive Scan Output Via Component Video or VGA for Flicker-Free Images
- HD Compatible: 480i/720p
- Compatible Disc Formats: CD, CD+G, VCD, DVD, CD-R, CD-RW, DVD±R/RW, Dual Layer DVD±R/RW
- Compatible Formats: Audio CD, HDCD, DVD-Video, VCD, CD+G, MP3, JPEG, WMA MPEG
- Next generation Real-time Super Error Correction - Auto Skipping Discs Read Errors, Provides Smooth Playback even when discs are dirty, scratched or minor cracked.
- Super Shock Resistant Design
- Upgradeable Firmware - Support Future New Formats When Upgrades Are Available
- Simultaneous Dual Screen Output: VGA & Component Video or RCA & S-Video
- Built-in 5.1-channel Dolby Digital, AC-3 DTS and HDCD decoders
- Player can be set to any region for exporting worldwide
- Plays Both NTSC and PAL Discs. Automatic NTSC and PAL switching
- Aspect Ratios: 4:3 Pan and Scan, 4:3 Letterbox, 16:9 Widescreen
- ± 6 Steps Key Control
- Random Play Mode / Programming Mode / A-B Repeat Mode
- Slow Motion / Picture Zoom / Frame Advance / Multi-Angle Viewing / Bookmark
- Playback Control (PBC) for Direct Plays
- Parental Password Control
- 2 x 1/4" Microphone Inputs
- 2 Independent Microphone Volume Controllers
- Built-in Professional Grade Karaoke Mixer
- Built-in Microphone Bass and Treble Controller
- Echo Controller

### Specifications:

- 5.1 Channels Surround Sound Output (RCA)
- 2 Channels Stereo (Music) Output (RCA)
- Mixer (Vocal + Music) Output (RCA)
- Coaxial Output
- Optical Output
- 1 RCA Video Output
- 1 S-Video Output
- 1 Component Video Output (Y/PB/BR) (Interface or Progressive Scan)
- VGA Output (Interlace or Progressive Scan)
- European SCART Output
- Lifetime Technical Support
- Universal Power Supply: AC 100V-245V, 50/60Hz Auto switching
- NTSC / PAL Switchable for U.S. and European Standard
- Designed in U.S.A.
- CE / UL / FDA Certified
- Dimensions: 17"L x 9.5"W x 2.75"H
- Weight: 9 lbs.
- 1 Year Manufacturer Warranty

### INCLUDES

- Remote Control
- RCA Cable
- 2 Wired Mics
- 2 AAA Batteries
- Rack-Mount Kit



### DGX-109 Rear Panel:

1. Power Input
2. VGA Output
3. Scart Output
4. AV Output
5. 5.1 Surround Sound Outputs
6. Stereo Audio Output
7. Coaxial Output
8. Video Output
9. S-Video Output
10. Optical Output
11. Component Outputs
12. AV Input

# Wildcat II

Portable Karaoke Boombox  
with 7" LCD/ Digital TV/ Radio

## Convert CDs to MP3s & Save to Memory Card!



**Left Side:**  
1. Radio Station Tuner  
2. Aux Audio Input  
3. Headphone Jack Input



**Right Side:**  
1. Mic Inputs  
2. Mic Echo Control  
3. Mic Volume Control

### Features:

- MP3 Encoding from Audio CD to the USB port or SD/MMC reader
- Digital TV Tuner - Antenna Included
- Improved mixer sound quality using the latest Yamaha mixing chip
- Auxiliary Input for audio or video devices
- Direct Access Key to control DVD Menu
- Direct Access Key on +Key & -Key button
- Low Power Indicator
- View pictures and play music through the USB port
- 7" LCD full color monitor
- Super Shock Resistant Design - Resist shocks from player vibration.
- Direct Access Keys On Front Panel Including: CH+/CH-, AM/FM, DVD Audio Track, L/R Stereo, Key Controller, DVD Menu, Volume Control
- 32Bit Professional Digital Mixer and Echo Processor
- 5 Built-in Music Equalizer Settings: Rock, Classic, Pop, Jazz and Flat
- ± 6 Step Digital Key Control
- Cassette Player - Can play and record your own singing or music.
- 2" Status display screen

### Specifications:

- Compatible Disc Formats: CD, CD+G, VCD, DVD, CD-R, CD-RW, DVD R/RW, Dual Layer DVD R/RW
- Compatible Formats: Audio CD, DVD, VCD, CD+G, MP3, JPEG, AVI, WMA, MPEG
- 2 X 1/4" Microphone Inputs
- A/V Aux In (Hook up PS3 or MP4 Player)
- Aspect Ratios: 4:3 Pan and Scan, 4:3 Letterbox, 16:9 Widescreen
- Plays both NTSC and PAL Discs. Automatic NTSC and PAL switching.
- Headphone output jack
- Dimensions: 15"L x 9.5"W x 6.5"H
- Weight: 7.8 lbs
- 1 Year Manufacturer Warranty

### INCLUDES

- Remote Control
- 1 Wired Mic
- Car Power Adapter
- RCA Cable
- AC Power Cord
- 2 AAA Batteries (for remote)
- RCA-to-Mini Jack Cable

### Wildcat II Rear Panel:

1. TV Antenna Connection
2. S-Video Output
3. Optical Output
4. RCA Outputs
5. Coaxial Output
6. Component Video Outputs
7. Car Power Adapter Input



# PK-6000 Pocket Karaoke

## Personal MP3G Karaoke Entertainment System



### Features:

- Large 2.8" color touch-screen LCD to see song lyrics or watch videos
- Use as a MP3/MP4 player or a picture viewer
- Play MP3G Karaoke Files
- Built-in digital karaoke mixer with digital echo and delay processor
- Use as a USB Memory Drive
- Use as a Digital Audio Recorder
- Built-in FM Receiver and FM Transmitter
- TV Output for large TV/ sound system experience
- Record your singing for practice or share with your friends
- All-in-one karaoke system hold thousands of karaoke tracks
- 2GB internal memory - Store thousands of songs in its 2GB built-in internal memory
- SD Card slot for memory expansion

### Specifications:

- Compatible Audio Format: MP3, WAV, WMA, OGG, KAR
- Compatible Video Format: (required Acesonic Media Converter for PC): MOV, ASF, DivX, AVI, DAT, MP4, WMV, MPG, RM, RMVB, VOB
- Output Connector:
  - 3.5mm Mini-jack Audio Output
  - 3.5mm Mini-jack Audio Input
  - Mini-USB to RCA TV output
  - Mini-USB port
- Screen Size: 2.8" Touch Screen, Stylus Pen Included
- Screen Resolution: 400 x 240
- FM Transmission Band: adjustable from 76MHz - 108Mhz
- Battery Capacity: 900MAh/3.7V Nokia Compatible Battery
- Dimensions: 4"L x 2.5"W x .5"H
- Weight: 8 oz
- 1 Year Manufacturer Warranty

### INCLUDES

- 3.5mm Stereo Headphone
- Mini-Jack Microphone
- Mini-USB Cable
- Rechargeable Battery
- USB Charger
- USB to RCA Audio/Video Cable
- Installation Disc



Right Side



Left Side

### PK-6000 Sides:

- 1 MicroSD Card Slot
- 2 Mini-USB Port
- 3 Mini-Mic Input
- 4 Headphone Jack Input



\*Screen images simulated

# PS-410

## 400-Watt Professional 10" Powered Stereo Speaker System



### Features:

- 400 Watts Dual 10" Power Speaker
- Music Bass, Treble Volume Control
- Microphone Echo & Volume Controls
- 1/4" Microphone Input
- RCA Audio Line Input & Output
- Speaker Stand Mountable



### SS-689

#### Professional Heavy Duty Speaker Stands (Pair)

- 2 Steel Constructed Universal Mounting Bracket Included
- Height: 36"-72"
- Weight: 15 lbs each
- Load Capacity: 88 lbs ea

### Specifications:

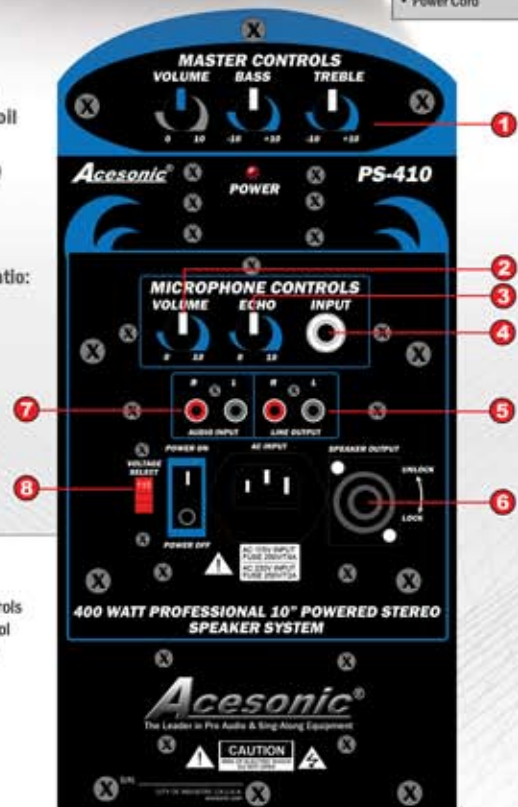
- Max Power Output: 400W (200W + 200W)
- 10" Woofer with High Temperature Voice Coil
- 2" Mid-Range Driver
- Frequency Response: 20Hz - 20KHz ( $\pm 3$ dB)
- Microphone Input Sensitivity:  $< 25$ mV
- Echo Delay:  $> 80$ ms
- Input Sensibility:  $< 250$ mV
- Max Input Signal: 3Vp-p- Signal-to-Noise ratio:  $> 80$ dB
- 115 - 230V Selectable
- Speaker stand holes for easy mounting
- Dimensions: 13"L x 10"W x 20"H
- Weight: 19.25 lbs
- 1 Year Manufacturer Warranty

### PS-410 Rear Panel:

1. Volume, Bass, Treble Controls
2. Microphone Volume Control
3. Microphone Echo Control
4. Microphone Input
5. Audio Line Output
6. Speaker Connector
7. Audio Input
8. Voltage Selector

### INCLUDES

- Speaker Cable
- Power Cord





**A.** SP-582 Diamond  
250-Watt, 10-Speaker, 3-Way Crossover Professional Speaker

**B.** SP-580  
120-Watt Heavy-Duty Speaker System

**C.** SP-450  
300-Watt Professional Vocal Speaker System

**D.** SP-280  
120-Watt 8" Speaker System

**E.** SP-265  
100-Watt 6.5" Speaker System

**Specifications:**

Max Power Output	250W + 250W @8Ω	120W each	300W each	120W each	100W each
Frequency Response	45 - 20KHz	50 - 18KHz	55Hz - 20KHz	55Hz - 20KHz	55Hz - 20KHz
RMS	250W @4Ω / 500W Peak @4Ω	80W each	200W each	80W each	60W each
Impedance	8Ω	8Ω	2 - 8Ω	Low/Mid - 8Ω, High - 4Ω	Low/Mid - 8Ω, High - 4Ω
Sensitivity	98dB	90dB	92dB	90dB	90dB
Woofer	2 x 10"	8"	10"	8"	6.5"
Mid-Range	4 x 3"	2"	none	none	none
Tweeter	4 x 3"	1"	2 x 3"	2 x 3"	3"
Weight	30 lbs each	21 lbs each	25 lbs each	17.25 lbs each	8 lbs each
Dimensions (LxWxH)	12" x 14.5" x 17"	10.8" x 17.5" x 10"	20.27" x 11.4" x 11.8"	17.5" x 11" x 10.5"	8.25" x 12" x 6.75"

**Features:**

- 3-Way full frequency output
- Professional sound quality, heavy-duty design
- Vented low frequency radiation
- Can be used as a monitor speaker
- Ceiling-mount and speaker stand mount compatible

**Features:**

- Only speaker with woofer, mid-range and tweeter
- Sustains continuous use and maximum volume
- Ported speaker enclosure
- Ceiling-mount and speaker stand mount compatible

**Features:**

- Type: 2-Way, 3-Speaker Bass-Reflex Type
- Attractive three-dimensional curved design
- Banana Plug connector style interface
- Ceiling-mount and speaker stand mount compatible

**Features:**

- Ported speaker enclosure



**Features:**

- Ported speaker enclosure



# KJV-835

**400-Watt Professional Vocal Mixing Amplifier with 3.5" LCD Monitor/MP3G Player & Recorder**



## Features:

- PC to USB Interface for pure-digital simultaneous Playback & Recording (Windows XP, Vista & 7)
- 400 Watts Max Power Output
- 3.5" Built-In LCD Screen to monitor a 2nd A/V source
- Headphone Output for 2nd A/V source
- LCD Status Screen to Display: Key, Main Input Source, Monitor Input Source and Multiplex
- Built-in MP3G Recorder and Player Module
- 4 Audio/Video Inputs: DVD/AUX/PC/MP3G Module
- 2 Component Video Inputs: DVD/AUX and 1 Component Video Output
- 1 RCA Audio/Video Output
- 1 PC Input (Composite Video + USB Port)
- Auto Input Selector
- L/R Multiplex Channel Output Selector
- Music Low, Mid, High, Balance, Volume Controls
- Microphone Delay, Repeat, Echo, Low, High Volume Controls
- Microphone Volume Controls for Low, Mid, High, Echo, Balance, Volume
- 3 Front & 2 Rear 1/4" Microphone Inputs
- Master Microphone Control
- Master Echo Control
- Master Volume Control
- 4 Audio Outputs (Record Out, Line Out, Subwoofer Out (Music/ Mixing), Mic Out (High/Low)
- 2 Banana Plug Speaker Connectors
- 115/230 Voltage for Worldwide Compatible
- Built-in BBE Sonic Maximizer for both vocal and music
- Temperature-Active, Ultra-Low-Noise Fan for non-stop operation
- 2 SpeakOn Speaker Connectors
- Pre-Input and Pre-Output for External Effort

## Specifications:

- Integrated USB Audio Solution using C-Media CM106 Audio I/O Controller works for PC and Mac
- Maximum Output: 200W + 200W @ 8Ω Max
- Microphone Input Sensitivity: <20mV
- Music Input Sensitivity: 250mV / 47KΩ / 1kHz
- Microphone Frequency Response: 20Hz - 20 kHz / 3dB
- Music Frequency Response: 20Hz - 20 kHz / 3dB
- Microphone EQ characteristics: Treble: +/- 10dB (10kHz), Bass: +/- 10dB (100Hz)
- Music EQ characteristics: Treble: +/- 10dB (10kHz), Bass: +/- 10dB (100Hz)
- Key Control Range +/- 6 Half Tones
- Speaker Wattage Impedance: 4Ω - 8Ω
- Voltage: AC 115V - 230V Manual Select
- Rackmountable - kit included
- Dimensions: 17"W x 14"W x 6.5"H
- Weight: 33 lbs.
- 1 Year Manufacturer Warranty
- Designed in U.S.A.

## INCLUDES

- Remote Control
- USB Driver Disc
- USB Cable
- 2 AAA Batteries
- RCA Cable
- Rackmount Kit

## KJV-835 Rear Panel:

- |                               |                       |
|-------------------------------|-----------------------|
| 1. AC 115V/ 230V Input Select | 10. Effect Loop       |
| 2. AC 115V/230V Input         | 11. Audio Inputs      |
| 3. Fuse                       | 12. Audio Outputs     |
| 4. AC Unswitch Output         | 13. Video Inputs      |
| 5. Speakon Output             | 14. Video Outputs     |
| 6. Microphone Output          | 15. #4, #5 Mic Inputs |
| 7. Subwoofer Output           | 16. USB to PC Inputs  |
| 8. Line Output                | 17. Component Outputs |
| 9. Record Output              | 18. Component Inputs  |



# AM-898

600-Watt Professional DSP Mixing Amplifier with Feedback Eliminator, Vocal Elimination, Signal Normalizer, Digital EQ, Echo & Reverb



## Features:

- Feedback Eliminator
- Vocal Eliminator
- Auto Level/ Balancing for Music and Vocal
- Digital Effect Processor
- 3-Band Music and 5-Band Microphone Equalizer
- Microphone Noise Gate
- 5 Microphone Inputs (3 front, 2 rear)
- RS-232 Serial Port PC Interface
- User Lock-Down Mode
- Subwoofer Signal Control
- Music and Microphone Balance
- Auto-Source Detection
- 5 Preset Memory Recall Buttons
- 600 Watts Maximum Power Output
- 4 Audio & Video Input Selections
- Microphone Volume, Music Volume and Effect Volume Control
- 11-Step Digital Key Control
- 5 Preset Memory Settings to Store Your Favorite Audio/ Effect Settings
- Subwoofer Reducer/ LPF
- Stereo Sound Balancing for Irregular Rooms
- Center Speaker Settings with Volume Control: Mic Only, Music Only, Mic + Music, or Auto Switch

## Specifications:

- 300 + 300 Watts Maximum Power Output @ 8Ω
- Supports Digital S/ PDIF Input (PCM 44.1KHz, 48KHz)
- 4 RCA A/V Inputs and 2 RCA A/V Outputs
- Dimensions: 17" W x 12.75" W x 5.75" H
- Weight: 28.3 lbs.
- 1 Year Manufacturer Warranty

## INCLUDES

- Remote Control
- Power Cable

## AM-898 Rear Panel:

1. Four A/V Inputs
2. Two A/V Outputs
3. Center Output
4. Remote Extension
5. SPDIF Digital Audio Input
6. Banana Audio Outputs
7. Subwoofer Output
8. Two Microphone Inputs
9. RS232 to PC Connecting Port



**Acersonic**

# AM-888

500-Watt Dual Professional 32-Bit DSP  
Mixing Amplifier with Echo / Reverb / BBE

MIXING AMPLIFIERS



## Features:

- Uses the latest generation dual DSP 32-Bit processors
- Maximum 500 Watt Power Output
- Power output 150W + 150W (8Ω), 250W + 250W @4Ω
- Uses Yamaha YSS-205F DSP Advanced Stereo Key Controller Chipset
- 15-Step key controller
- On-Screen Display for advanced settings
- Built-in high quality stereo digital echo
- 5 Microphone Inputs
- 4 pairs of banana speaker terminals (2 left + 2 right)
- Built-in BBE sound enhancement technology
- Dynamic range expander
- Large keypad Infrared remote controller
- Subwoofer output with subwoofer volume control
- Vocal Cancel (up to 90% of music) and Vocal Partner Function
- Echo Repeat, Echo Delay
- Reverb function
- 6 Types of DSP Sound Effects:
  1. Echo
  2. Echo+Reverb
  3. Stereo Echo + Reverb
  4. Delay + Reverb
  5. Stereo Delay + Reverb
  6. Vocal Reverb

## Specifications:

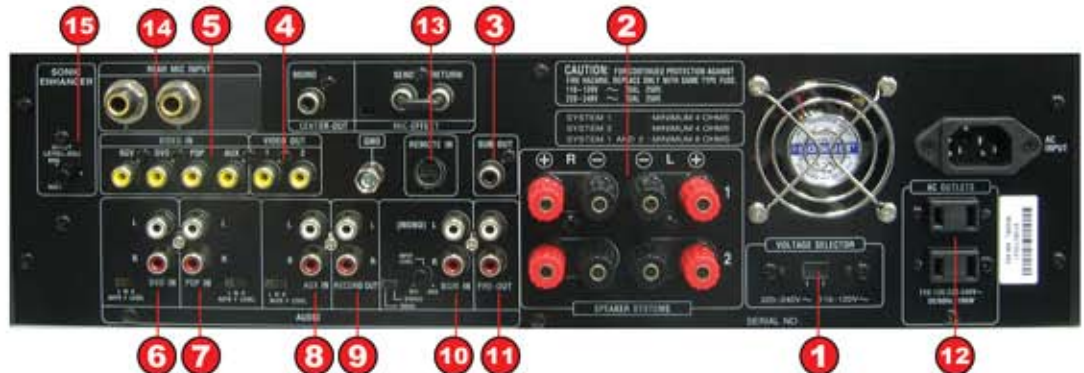
- 4 RCA Audio Inputs with automatic source selector capability
- 2 RCA Video Outputs
- 32-Bit A/D Converter
- 1 Microphone Effect terminal
- 1 Audio Pre-out Terminal
- 1 Recording output terminal for tape deck
- 1 Remote Input for remote extender
- 2 Switched Power AC Outlet
- 1 Remote Uplink (use BMB Code)
- 1 Background Video Input (BGV) Jack
- 2 Background Music Input (BGM) Jacks
- Background Music Input Level Control
- Mono/Stereo Input Switch
- Music Input sensitivity switch
- External Microphone Effect Jack (Input/Output)
- 110/220 Voltage Input Selector
- Dimensions: 17"W x 15"W x 5.75" H
- Weight: 24.7 lbs.
- 1 Year Manufacturer Warranty

## INCLUDES

- Remote Control
- Power Cord

## AM-888 Rear Panel:

1. Voltage Selector
2. Speakers Output Terminals
3. Sub Out Jack
4. Video Output Jacks
5. Video Input Jacks
6. DVD Input Jacks
7. PDP Input Jacks
8. AUX Input Jacks
9. Record Output Jacks
10. BGM Input Jacks
11. Pre-Out Output Jacks
12. AC Outlets
13. Remote Input Jack
14. Rear Mic Input Jacks
15. Input Level Adjuster





# AM-825

Professional 600-Watt Mixing Amplifier  
with USB & BBE Sonic Maximizer



MIXING AMPLIFIERS

## Features:

- PC to USB Interface for pure-digital simultaneous Playback & Recording (Windows XP, Vista & 7)
- 2 Component Video Inputs and 1 Component Video Output for HD Video Signal
- Built-in BBE Sonic Maximizer for both vocal and music
- True Vocal Cancellation Function to remove up to 90% of lead vocal on any audio track
- Temperature-Active, Ultra-Low-Noise Fan for non-stop operation
- 4 Sets of Audio Outputs + USB to PC Recording Output
- Total 4 Audio/Video Inputs: DVD/BGM/USB/AUX
- 2 Component Video Inputs: DVD/BGM
- 1 Component Video Output
- 1 RCA Audio/Video Output
- PC Video Input: RCA/S-Video
- Auto Input Selector
- L/R/Multiplex Channel Output
- Music Low, Mid, High, Balance, Volume Controls
- Microphone Delay, Repeat, Echo, Low, High Volume Controls
- Microphone Volume Controls for 3 sets of 2 microphones
- 6 Microphone Inputs
- Master Microphone Control
- Master Echo Control
- Master Volume Control

- 4 x S-Video Input
- 4 x RCA Input
- 2 x Component Video Input
- 1 x Component Video Output, RCA Output, S-Video
- 4 Audio Outputs
- 2 Banana Plug Speaker Connectors
- 2 SpeakOn Speaker Connectors
- Subwoofer Audio Out

## Specifications:

- Integrated USB Audio Solution using C-Media CM106 Audio I/O Controller
- Maximum Output: 300W + 300W @ 8Ω Max
- RMS Output: 200W + 200W @ 4Ω RMS
- Microphone Input Sensitivity: <20mV
- Music Input Sensitivity: 250mV / 47K Ω / 1kHz
- Microphone Frequency Response: 20Hz - 20 kHz / 3dB
- Music Frequency Response: 20Hz - 20 kHz / 3dB
- Microphone EQ characteristics: Treble: ±10dB (10kHz), Bass: ±10dB (100Hz)
- Music EQ characteristics: Treble: ±10dB (10kHz), Bass: ±10dB (100Hz)
- ± 6 Step Key Control
- Speaker Wattage Impedance: 4Ω - 8Ω
- Voltage: AC 115V - 230V Manual Select
- Dimensions: 17"L x 14"W x 6.5"H
- Weight: 33 lbs.
- 1 Year Manufacturer Warranty

## INCLUDES

- Remote Control
- USB Driver CD
- USB Cable
- Rack-mount Kit

## AM-825 Rear Panel:

1. Voltage Selector
2. AC 115V/230V Input
3. Fuse
4. AC Unswitch Output
5. Speakon Output
6. Microphone Output
7. Subwoofer Output
8. Line Output
9. Record Output
10. Effector Loop
11. Audio Inputs
12. Audio Outputs
13. Video Inputs
14. Video Outputs
15. S-Video Input
16. PC Video Input
17. USB Port
18. Component Outputs
19. Component Inputs



**Acesonic**

# AM-600

Professional 600-Watt  
Dual Channel Amplifier



### Features:

- Professional 600-Watt Karaoke Amplifier
- Unbalanced RCA Input
- Balanced XLR Input
- Balanced 1/4" Cable Input
- Fan Cooled

### Specifications:

- Maximum Output: 300W + 300W @8Ω Max
- Two Channel Balanced/Unbalanced Inputs
- Individual Channel Volume Control
- Heavy-Duty Design/Rackmountable
- Dimensions: 17"L x 13"W x 3.75"H
- Weight: 24 lbs
- 1 Year Manufacturer Warranty

### INCLUDES

- Power Cord

### AM-600 Rear Panel:

1. RCA Input
2. XLR Audio Output
3. Two 1/4" Inputs
4. Banana Audio Outputs



# AM-170

250-Watt Mixing Amplifier  
with 3D Sound Enhancer

### Features:

- 125 + 125 Watt Maximum Power Output @4Ω
- 4 Audio & Video Input Selections
- 3 Front & 2 Rear Microphone Inputs
- ± 6 Step Digital Key Control
- 3D Dynamic Sound Enhancement for Rich Sound Quality
- Master Music Volume Control
- Master Microphone Volume Control
- Individual Microphone Volume Controls
- Microphone Echo Volume, Repeat & Delay Control
- Microphone Bass, Mid-Range & Treble Adjustments
- Music Bass, Mid-Range & Treble Adjustments
- Multiplex Function
- Full Function Remote Control



# AM-190

## Professional 300-Watt Mixing Amplifier



MIXING AMPLIFIERS

### Features:

- Professional 300-Watt Karaoke Amplifier
- 4 Audio & Video Source Selections
- Echo Effects - Echo/Echo Volume/  
Echo Delay/Echo Repeat
- Mic Tone - Bass/Treble
- Music Tone - Bass/Treble
- Master Volume Control
- Multiplex knob on front panel
- 5 Microphone Inputs
  - 3 Front with individual volume control
  - 2 Rear
- $\pm 4$  Step Key Controller
- Professional Microphone Mixer

### Specifications:

- Maximum Output: 150W + 150W @ 8 $\Omega$  Max
- Two Channel Balanced/Unbalanced Inputs
- Individual Channel Volume Control
- Heavy-Duty Design/Rack Mountable
- Dimensions: 17" L x 14.5" W x 5.75" H
- Weight: 22 lbs
- 1 Year Manufacturer Warranty

### INCLUDES

- Remote Control
- 2 AAA Batteries

### AM-190 Rear Panel:

1. Remote Extension
2. Two Rear Mic Inputs (3 In Front)
3. Audio Input Gain
4. Four A/V Inputs
5. One A/V Output
6. Banana Audio Outputs
7. Three Unswitched Out



### Specifications:

- Maximum Output: 80W + 80W @ 8 $\Omega$  Max
- RMS Output (continuous): 125W + 125W @ 4 $\Omega$  RMS
- Microphone Input Sensitivity: <20mV
- Music Input Sensitivity: 300mV
- Microphone Frequency Response: 20Hz - 20KHz/ 3dB
- Music Frequency Response: 20Hz - 20KHz/ 3dB
- Microphone EQ: Treble: +/- 5dB (10KHz),  
Bass: +/- 5dB (100KHz)
- Music EQ: Treble: +/- 5dB (10KHz),  
Bass: +/- 5dB (100KHz)
- Speaker Wattage Impedance: 4 $\Omega$  - 8 $\Omega$
- Supply Voltage: AC 110V - 120V or AC 220V - 240V
- Dimensions: 16" L x 13" W x 5.75" H
- Weight: 17 lbs
- 1 Year Manufacturer Warranty

### INCLUDES

- Remote Control
- Power Cord

### AM-170 Rear Panel:

1. Effector Loop
2. Record Output
3. Line Output
4. Speaker Connectors
5. Voltage Selector
6. S-Video Output
7. S-Video Inputs
8. Audio Output
9. Video Output
10. Mic Inputs
11. Video Inputs
12. Audio Inputs



**Acesonic**

# AM-145

80-Watt Mixing Amplifier  
with 4 AV Inputs



Front AUX Inputs

### Features:

- 80 Watt maximum power output
- Four A/V inputs selector - One front input for easy connection
- Microphone volume control
- Microphone bass and treble control
- Microphone echo and delay control
- Music bass and music treble control
- Music balance control
- Two ¼" microphone inputs
- Music effect bypass switch
- Dynamic sound enhancer - Enhance a full range of frequencies

### Specifications:

- Maximum output: 40W + 40W @ 8Ω
- 4 A/V Inputs
- RCA line and sub outputs
- 115V-230V power input selector for worldwide compatibility
- Power AC 115-230V 50/60Hz input
- Dimensions: 17"W x 12"W x 5.75"H
- Weight: 16 lbs
- 1 Year Manufacturer Warranty

### INCLUDES

- Remote control
- 2 AAA Batteries
- RCA Cable
- Power Cord



### AM-140 Rear Panel:

1. Three A/V Inputs
2. One A/V Output
3. Line Audio Output
4. Line Sub Audio Output
5. Banana Audio Outputs
6. AC 115V/ 230V Input Select



# AM-125

50-Watt  
Mixing Amplifier

### Features:

- 50 Watt maximum power output
- Two ¼" microphone inputs
- LED status display screen
- LED digital volume meter
- Music bass, treble and balance controls
- Master music volume control
- Microphone volume, tone and echo controls
- Dual banana speaker connector output
- Surround sound speaker output
- Four input selectors
- Sleek aluminum finish

### Specifications:

- Maximum output: 50W @ 8Ω
- 4 Audio Selector
- 110V AV Power 50Hz
- 110V Power Input
- Dimensions: 17"L x 11"W x 3"H
- Weight: 8.25 lbs
- 1 Year Manufacturer Warranty



### AM-125 Rear Panel:

1. Four Audio Inputs
2. Virtual Center/ Rear Left/ Rear Right Surround Sound Outputs
3. Speaker Outputs



# KM-360

Professional Digital Mixer  
with Feedback & Vocal Eliminator,  
PC Interface & Microphone Noise Gate



MIXERS

### Features:

- Feedback Eliminator
- Vocal Eliminator
- Music Volume Auto Leveling
- Digital Effect Processor
- 5-Band Music and Microphone Equalizer
- 11-Step Digital Key Controller with 1/2 Tone Per Step
- Microphone Noise Gate
- Multiple-Channel Surround Sound Configuration
- 5 Microphone Inputs with 2 XLR Input Connectors
- S/PDIF Digital Input
- Control from PC via the RS-232 Serial Port
- User Lock-Down Mode
- Subwoofer Signal Control
- Center Speaker and Rear Speakers Signal Control
- Music and Microphone Balance
- Auto-Source Detection
- 4 Preset Memory Recall Buttons
- XLR Line Outputs

### Specifications:

- Support digital S/PDIF Input (PCM 44.1KHz, 48KHz)
- 4 RCA A/V inputs & 2 RCA A/V outputs
- 1 RCA Record output & 1 RCA Surround Sound Output
- 1 External Remote Control Signal Input
- 1 U Rack Mountable
- Dimensions: 16.75" L x 4.5" W x 1.75" H
- Weight: 8lbs
- 1 Year Manufacturer Warranty

### INCLUDES

- Remote control
- Power Cord

### KM-360 Rear Panel:

1. Power
2. Serial Port
3. Remote Extension
4. Four Video Inputs
5. Four Audio Inputs
6. 5.1 Surround Sound Audio Outputs
7. Four XLR Surround Sound Outputs
9. Pre Audio Output
10. Two Video Outputs
11. Microphone Inputs



**Acesonic**

# Turn any PC, DVD Player, or MP3 Player into a Karaoke Machine

**KM-112**  
Karaoke Mixer  
with PC-to-USB Interface



**BOOST**  
sound performance  
simply by  
turning on the  
**3D Sound Enhancer!**

## Features:

- Total USB Convenience. Use with laptops & desktop with no sound card installation
- Ultra-Compact & Flexible Mixer with USB Computer Interface
- Left & Right Multiplex Stereo Control with a Flick of a Switch!
- Perform with a partner! Two line inputs, balanced XLR & unbalanced 1/4"
- Customize your Sound with Complete Microphone Treble, Bass & Echo controls
- Play from PC to USB and Record to PC
- Perfect for MSN and Skype

## Specifications:

- Integrated USB Audio Solution using C-Media CM106 Audio I/O Controller
- Two 1/4" Mic Inputs (front panel)
- Two XLR Balanced Inputs - Connect two XLR microphones, electric guitar, piano keyboard, or sound sources to the rear panel.
- Compatible with Windows XP, Vista & 7
- One USB port
- One RCA Audio Input - Connect your music source from a PC, iPod, MP4 Player, or DVD Player.
- One RCA Audio Output - Connect music output to your TV, home theater, or stereo system.
- Headphone input
- 115/230 Voltage Selection
- Dimensions: 11.5"L x 7"W x 1.75"H
- Weight: 3 lbs
- 1 Year Manufacturer Warranty

## INCLUDES

- 1 Wired Microphone with 14' cable
- RCA-to-RCA audio cable (Connect from DVD Player)
- RCA-to-Mini Jack audio cable (connect from PC)
- USB Driver Disc (Compatible with Windows XP/Vista/7)
- USB Cable
- Rack Mount Kit
- Power Cable

## KM-112 Rear Panel:

1. Mic 1, Mic 2 XLR Inputs
2. Audio Output
3. Audio Input
4. PC USB Port
5. Power Input
6. Voltage Selector





### Features:

- Rechargeable
- 4 Replaceable Receiver/Transmitter Modules
- 4 Microphone Outputs with Individual Volume Controls
- UHF Band Quartz Lock for Drift Free Operation
- Receiver Power/RF/AF & Microphone Low Battery Indicators
- Front Antenna Provides Clear RF Reception
- 4 Individual XLR Mic Outputs and One ¼" Mixed Output
- Professional Heavy-Duty Design / Rackmountable

### Specifications:

#### Receiver

- Carrier Wave Frequency Range: UHF 668-692MHz
- Frequency Response: 40Hz-18KHz
- Oscillation Mode: Quartz Controlled Fixed Frequency
- Carrier Wave Stability: 10PPM
- Switching Bandwidth: 24MHz
- Sensitivity: -105dB @ sinad=12dB
- S/N Ratio: >105dB
- T.H.D.: <0.5% @ 1KHz
- Image Rejection: 85dB typical
- Spurious Rejection: 75dB typical
- Working Distance: 200 ft
- Squelch Control: dual-squelch circuit
- AF Output Impedance: 2.2KΩ
- Max Output Level:
  - Balance: 0-400mv
  - Unbalanced: 0-200mv
- Display: LED
- Power Supply: External DC Power Supply, 0.8A, 12-18V DC
- Output Connector:
  - 4 XLR Balanced Socket
  - Unbalanced TRs 1/4" Socket
- Dimensions: 16.5" L x 8" W x 1.75" H
- Weight: 6.6 lbs

#### Transmitter (Handheld)

- Transmitter Power: 30mW
- Spurious emission: <40dB (with carrier)
- Display: LED

#### Transmitter (Body-Pack)

- Transmitter Power: 30mW
- Spurious emission: <40dB (with carrier)
- Display: LED
- Battery Voltage: 1.5V x 2



### INCLUDES

- 2 Wireless Mics
- 2 Charging Base
- 2 Antennas
- Power Adapter
- Microphone Cable
- Battery AA x 4
- Rack Mount Kit

## UHF-4000

This model has the same features & specifications as the UHF-4000R minus the recharging capability. It's a 4-channel UHF wireless microphone system with each microphone on its own independent UHF channel will give you maximum utilization without the fear of frequency interference just like the 4000R!



# Acesonic®

# UHF-2932

32-Channel Rechargeable Dual Wireless Microphone System with Infrared Syncing



- INCLUDES**
- Microphone Cable
  - 2 Antennas
  - Charging Base
  - 2 Power Cables
  - Rack Mount Kit
  - 2 AA Rechargeable Batteries

## Features:

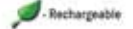
- Switchable, 16 Channels per Microphone (32 Total Channels)
- Microphone & Receiver Channels Auto-Sync via Infrared
- Two High Sensitive Microphones with LCD Indicators
- Noise Reduction Technology
- Rechargeable
- Dual Channel LCD Display
- Rackmountable - Need 2 machines to fit rack-mount

## Specifications:

- Frequency Band: UHF
- Receiver: Dual Channel PCB Module
- Frequency Range: 610-700 MHz
- Frequency Stability: PLL
- F/N Ratio: 80dB
- P/N Ratio: 80dB
- Output Connector: 1/4", 3-pin XLR
- Antenna: 2TNC PLUG  $\Omega$
- Frequency Response: 50-20,000 Hz
- S/N Ratio: 100dB
- T.H.D.: 0.8%
- Operating Distance: 300 ft
- Working Range:
  - 200 ft under typical conditions
  - 260 ft line-of-sight, outdoor
- Power: DC 12V
- Dimensions: 8"L x 6"W x 1.5"H
- Weight: 2 lbs
- 1 Year Manufacturer Warranty

## Transmitter

- Frequency Range: 610-700 MHz
- Frequency Stability: PLL
- Modulation Mode: FM
- Adjustment Depth: 35 KHz (Max)
- Transmitting Power:  $\leq$  10dBm RF
- Squelch:  $>$ 50dB
- Battery: 1.5V\* AA x 2 per mic



# UHF-2600

Dual UHF Wireless Microphone System



## Features:

- Dual-Channel professional wireless microphone system
- UHF Band Quartz lock for drift free operation
- 2 wireless handheld microphones with enhanced muting and noise reduction technology
- Individual microphone volume controls for precise vocal balancing
- 2 antennas provide clear RF reception
- Rack Mountable - Need 2 machines to fit rack-mount

## Specifications:

### Receiver

- Carrier wave frequency range: UHF 619-688.85MHz
- Oscillation Mode: Quartz controlled fixed frequency
- Carrier Wave Stability: 10PPM
- Sensitivity: -105dB @ sinad=12dB
- S/N Ratio:  $>$ 105dB
- T.H.D.:  $<$ 0.5% @ 1KHz
- Image rejection: 85dB typical
- Spurious rejection: 75dB typical
- AF Output Impedance: 2.2K $\Omega$
- Maximum Output:
  - Level Balanced: 0 - 400mv
  - Unbalanced: 0 - 200mv
- Display: LED Display Unit
- Power Supply: External DC Power Supply
  - 0.35A - 12-18V DC
- Output Connector:
  - 1 XLR Balanced Socket - Unbalanced 1/4"
- Dimensions: 16.5"L x 7.67"W x 1.75"H
- Weight: 1.25 lbs

## INCLUDES

- 2 Wireless Mics
- Microphone Cable
- Rackmount Kit

# UHF-1100

10-Channel UHF Wireless Microphone with Infrared Syncing



## Features:

- 10 Selectable Channels with Advanced Channel Scanning Function
- Easy Infrared Syncing instantly matches microphone and receiver channel
- Noise Reduction Technology: High Signal/Noise ratio and super low distortion

## Specifications:

### Receiver

- Working distance: 200 ft on Line-Of-Sight
- S/N Ratio:  $>$ 105dB
- Oscillation Mode: Phase-locked Loop Control
- Maximum Output:
  - Balanced: 0-400mV
  - Unbalanced: 0-200mV
- Output Connector:
  - 1 XLR Balanced Socket - Unbalanced 1/4"
- Frequency Range: 668-692 MHz
- Power Supply: External DC Power Supply, 0.35A, 12-18V DC
- Handheld Microphone Batteries: AA 1.5V x 2
- Battery Life: 4-6 hours
- Dimensions (Receiver): 7"L x 4"W x 1.5"H
- Weight: 2 lbs



## INCLUDES

- 1 Handheld Microphone
- Power Cord
- Microphone Clip
- Microphone Cable
- Carrying Case



# UHF-1208XR

Diversity 1000-Channel  
Rechargeable Dual Wireless  
Microphone System  
with Infrared Syncing



## Features:

- Rechargeable
- 1000 switchable channels with Auto-Channel Selection function
- Easy Infrared syncing for quick channel matching
- Diversity receiver
- One button microphone operation
- Module removable microphone head
- Dual identical microphone design
- Two high sensitive microphones with noise reduction technology
- Individual microphone volume controls
- Dual channel information LCD display
- Front antenna provides clear RF reception
- Rackmountable
- Dent-resistant microphone grille



## UHF-1208X

This model has the same features & specifications as the UHF-1208XR minus the recharging capability. The world's first UHF Diversity 1000-Channel Rack-mountable Dual Wireless Microphone System with auto-channel-scan and infrared-channel-sync functions!

## Specifications:

### Receiver

- Carrier Wave Frequency Range: UHF 668-692MHz
- Oscillation Mode: Phase-locked Loop Controlled
- Carrier Wave Stability: 10PPM
- Switching Bandwidth: 24MHz
- Frequency Space: 25KHz
- Sensitivity: -105dB @ sinad=12dB
- S/N Ratio: >105dB
- T.H.D.: <0.5% @ 1KHz
- Image Rejection: 75dB typical
- Spurious rejection: 85dB typical
- Frequency Responses: 40Hz-18KHz
- Working Distance: 200 ft
- Squelch Control: dual-squelch circuit

- AF Output Impedance: 2.2K $\Omega$
- Max Output Level:
  - Balance: 0-400mv
  - Unbalanced: 0-200mv
- Display: LCD
- Power Supply: External DC Power Supply, 0.5A, 12-18V DC
- Output Connector:
  - 2 XLR Balanced Socket
  - Unbalanced TRs 1/4" Socket
- Dimensions: 16.5"L x 7.87"W x 1.75"H
- Weight: 5.5 lbs

### Transmitter (Handheld)

- Transmitter Power: 30mW
- Spurious emission: <40dB (with carrier)
- Display: LCD

### Transmitter (Body-Pack)

- Transmitter Power: 30mW
- Spurious emission: <40dB (with carrier)
- Display: LCD
- Battery Voltage: 1.5V x 2



### INCLUDES

- 2 Wireless Mics
- Charging Base
- 2 Antennas
- Power Adaptor
- Microphone Cable
- Battery AA x 4
- Rack Mount Kit



## VHF-8008

### Dual Rechargeable Wireless Microphone System



#### Features:

- Built-in Charger Base
- Individual Microphone Volume Control
- Dual Wireless Microphone
- VHF Modulation

#### Specifications:

##### System

- Frequency Range: VHF Band (180 - 250 MHz)
- Quartz Lock for Drift free operation
- Frequency Stability: 0.005%
- Modulation Mode: FM
- Frequency Response: 50-16000Hz
- Signal to Noise Ratio: >60dB
- Maximum Sound Pressure: 120dB
- Distortion factor: 1%
- Effective Field: 30m
- Operation Temperature: 10 C - +5010 C

##### Receiver

- Receive Mode: Crystal Frequency Lock
- Frequency Range: VHF Band (180 - 250 MHz)
- Quartz Lock for Drift free operation
- Frequency Stability: 15 PPM
- Sensitivity: 3uV 30dB S/N
- Signal to Noise Ratio: 60dB
- Audio Output: 0 - 0.5V/4.7K
- Output Connectors:
  - 2 XLR Unbalanced & 1/4" Balanced
- Power: AC 90/240( 10%)
- Dimensions: 12.83"L x 7.87"W x 2"H
- Weight: 3.3 lbs

##### Transmitter

- Frequency Range: VHF Band (180 - 250 Mhz)
- Quartz Lock for Drift free operation
- Frequency Stability: 15 PPM
- Modulation Mode: FM
- Modulation Depth: 10 KHz
- Emission Power: 30 mV max
- Harmonic Suppression: 40dB
- Battery: AA
- Antenna: Built in
- Battery current: 25 - 30mA

**VALUE LINE**  
PERFORMANCE & AFFORDABILITY



#### INCLUDES

- 2 Wireless Mics
- Microphone Cable
- Rack Mount Kit
- Power Cable
- 4 AA Rechargeable Batteries

## VHF-1000

### Wireless Microphone System



#### Features:

- Professional VHF Wireless Microphone System
- VHF Band Quartz Lock for Drift Free Operation
- 1 Wireless Handheld Microphone with Enhanced Muting, Noise Reducing Functions
- Rechargeable 9V Battery & Charger Included
- Individual Volume Control for Precise Vocal Balancing
- Antenna Provides Clear RF Reception

#### Specifications:

- Frequency range: VHF band (180 - 300MHz)
- Quartz lock for drift free operation
- Frequency stability: 15 PPM
- Sensitivity: 3uV
- Signal to noise ratio: 60dB
- Max sound pressure >=120dB

#### Output connector:

- 1/4" Unbalanced (for separate or mixed signals)
- Battery: 9V
- Dimension of receiver: 6"L x 4"W x 1"H
- Weight: 3 lbs



#### INCLUDES

- 1 Wireless Mic
- Power Adapter
- Microphone Cable
- 9V Battery Charger
- 9V Battery

**VALUE LINE**  
PERFORMANCE & AFFORDABILITY

Rechargeable

Available in two frequencies. Please order either the red or blue band. If you are ordering 2 microphones, please select "One of Each" frequency.



## HM-708

### Professional Microphone with Volume Controller

#### Features:

- On/Off Switch
- 3 Level Volume Controller
- Cardioids polar pattern picks up the most sound from the front of the microphone and some sound from the sides.
- Steel mesh ball grill with integral "pop" filter reduces explosive breath sounds and wind noise

#### Specifications:

- Sensitivity - 72.5 dB
- Frequency Response 50Hz - 16KHz
- Impedance: 600Ω
- Lifetime Manufacturer Warranty

#### INCLUDES

- 15ft Microphone Cable (XLR-to-¼")
- Deluxe Microphone Carrying Case



## PX-88

### PerformMax Professional Dynamic Vocal Microphone

#### Features:

- On/Off Switch
- Frequency response tailored for vocals with brightened midrange and bass rolloff
- Uniform cardioid pickup pattern isolates the main sound source and minimizes background noise
- Pneumatic shock-mount system cuts down handling noise
- Effective, built-in spherical wind and pop filter

#### Specifications:

- Type: Dynamic (moving coil)
- Frequency Response: 50 to 14,000 Hz
- Polar Pattern: Unidirectional (cardioid)
- Open Circuit Voltage: -54.8 dBv (1.85 mV)
- Impedance: 150 (300 actual)
- Polarity: Positive pressure on diaphragm produces positive voltage on pin 2 with respect to pin 3
- Connector: 3-pin professional audio connector (male XLR type)
- Lifetime Manufacturer Warranty

#### INCLUDES

- 14ft Microphone Cable (XLR-to-¼")
- ¼" to Mini Jack Adaptor



## SX-88

### PerformMax Professional Dynamic Vocal Microphone

#### Features:

- On/Off Switch
- Frequency response tailored for vocals with brightened midrange and bass rolloff
- Uniform cardioid pickup pattern isolates the main sound source and minimizes background noise
- Pneumatic shock-mount system cuts down handling noise
- Supplied with break-resistant stand adapter which rotates 180 degrees

#### Specifications:

- Type: Dynamic (moving coil)
- Frequency Response: 50 to 15,000 Hz
- Polar Pattern: Unidirectional (cardioid)
- Open Circuit Voltage: -54.8 dBv (1.85 mV)
- Impedance: 150 (300 actual)
- Polarity: Positive pressure on diaphragm produces positive voltage on pin 2 with respect to pin 3
- Connector: 3-pin professional audio connector (male XLR type)
- Lifetime Manufacturer Warranty

#### INCLUDES

- 14ft Microphone Cable (XLR-to-¼")
- ¼" to Mini Jack Adaptor



## MP-703

### Wired Microphone

#### Specifications:

- Type: Hyper - Cardioid
- Frequency Response: 60Hz - 13,000 Hz
- Impedance: 400Ω
- Sensitivity: -74dB +/- 3dB
- Sound Pressure Level: More than 130 dB(SPL)
- Color: Metallic Gray

#### INCLUDES

- 14ft Microphone Cable (XLR-to-¼")



**Acesonic**

# PK-1290 Roadwiz<sup>®</sup>

## 80-Watt Professional Portable Sound System with Digital Recording & Guitar Input

### Portable Sound System with CDG-to-MP3G Converting Function!

# On the Ro We

#### Features:

- All-In-One Design Includes a Multi-Format Karaoke Player with Digital Recording, Vocal Mixer and Keyboard & Guitar Inputs
- 80-Watt Amplifier & Stereo Speakers with Two 3" Tweeters & Two 6.5" Mid-Range Speakers
- Digitally Record Your Performance & Live Sound into SD Card
- Multi-Format Player Supports CD, CD+G, VCD, DVD, MP3G, MP3, CD-R/CD-RW, DVD-R/DVD+R.
- 7 Band Equalizer to Fine-Tune Your Music.
- Convert Your CD+G Discs into MP3G Files.
- Full Function Remote Control Included.
- 120/240V and NTSC/PAL Compatible for Worldwide Use.
- External Speaker Output.
- Built-in Wheels & Handle Bars for Easy Transportation.

#### Specifications:

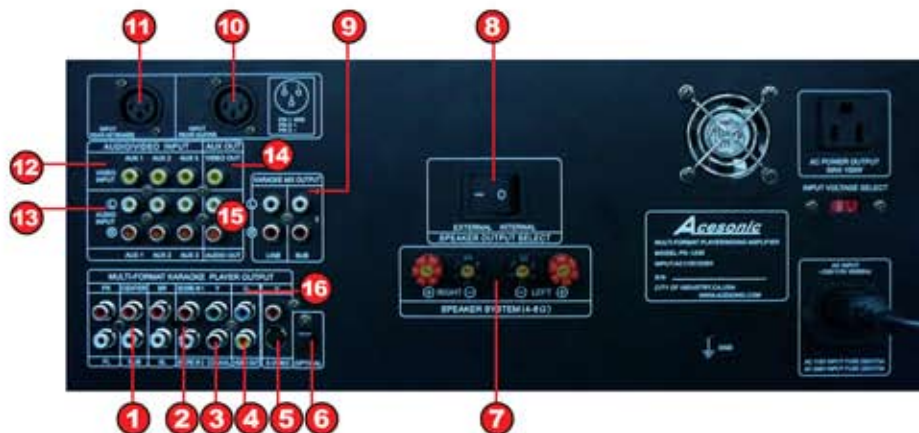
- Output Power..... 40W + 40W
- Total Harmonic Distortion..... ≤ 0.5%
- Input Impedance..... 47K
- Input Sensibility..... ≤ 25mV
- Max Input Signal..... 2.5Vp-p
- Signal-to-Noise..... ≥ 80dB
- Music EQ..... 60Hz/200Hz / 400Hz/1KHz/3KHz/6KHz/16KHz
- Frequency Response..... 20Hz - 20KHz (± 3dB)
- Mic Treble Adjustment..... ± 10dB
- Mic Bass Adjustment..... ± 10dB
- Mic Input Sensitivity..... ≤ 20mV
- Echo Delay..... ≥ 200ms

- |                       |                                    |
|-----------------------|------------------------------------|
| • Mic Inputs          | • A/V Outputs                      |
| - Two 1/4" & Two XLRs | - One RCA                          |
| • A/V Inputs          | - One S. Video                     |
| - One Guitar          | - One Component Video              |
| - One Keyboard        | - One Optical Audio                |
| - Three RCA           | - One Headphone                    |
|                       | • 120/240V and NTSC/PAL Compatible |



#### Roadwiz Rear Panel:

- 5.1 Surround Sound Outputs
- Score In 1&2
- Caxial Output
- Video Output
- S-Video Output
- Optical Output
- Speaker Outputs
- External/Internal Speaker Switch
- Karaoke Mix Output
- Guitar Input
- Keyboard Input
- Video Inputs
- Audio Inputs
- Aux Video Output
- Aux Audio Output
- Component Outputs



# ad or in the Club, Have Entertainment Covered



## PK-2100 Roadstar<sup>®</sup> 80-Watt DVD / CD+G/ MP3G All-In-One Karaoke Machine

### Features:

- Convert CD+G to MP3G at 1x or 4x the speed
- HDMI Connector outputs video up to 1080p
- Vocal Output to HDMI & RCA
- Display video from HDMI and RCA outputs at the same time
- Sing & record in MP3G
- Multi-Format Player Supports CD, CD+G, VCD, DVD, MP3G, MP3, CD-R/CD-RW, DVD-R/DVD+R.
- Recognizes up to 10,000 songs on USB drives or SD cards
- Reads faster with its USB 2.0 interface
- Generate songlist with song number for all songs in the USB/ SD/ Disc
- Plays back last recorded song with the "Songlist Function" in a touch of a button. No waiting
- New Cue On/Cue Off function makes it stop after each MP3G/CD+G song
- Smart memory lets you resume any movie from where it stopped when you turned off the machine. Turn it on and resume your movie. No need to start over and forward the movie to the desired point.
- DivX 7 compatible
- Using the latest processor, with increased memory, gives a smoother, faster and "jitter" free recording!
- One button shortcut to display music, pictures or videos only in a folder.

### Specifications:

- Direct Access Front Panel Design: Open, Close, Play, Pause, Previous, Next, 0 - 9 Number, Key, Microphone Volume, Echo Volume
- Record your vocals or performances into MP3
- ± 6 Steps digital key control
- Progressive Scan up to 1080p HD Video Output
- Video Output: Composite Video, S-Video, Component Video, VGA Video
- Audio Output: 2 Channel (L/R), 5.1 Channel, Optical and Coaxial
- Two 1/4" Microphone Inputs with Individual Volume Control
- Video Signal System: PAL/ NTSC/ AUTO

## MICROPHONE STANDS, CLIPS & CABLES

ACCESSORIES



### MS-430 Dual-Purpose Boom Microphone Stand

- Use as a regular microphone stand and a boom microphone holder
- Two upper attachments allow you to switch between the regular microphone holder and boom arm quick and easily
- Adjust height and angle for hands-free operation
- Light-weight makes it optimum for travel when you go to shows or other events.



### MS-428 5 ft Adjustable Round-Based Floor Microphone Stand with 2 Mic Holders



### MS-429 Table Top Microphone Holder



### K-413 Microphone Clip for Wired Mics



### K-415 Microphone Clip for Wireless Mics



### MC-815 15 ft XLR-to-1/4" Microphone Cable



### MC-820 Professional 15 ft female XLR-to-1/4" Microphone Cable



### QT-805 5 ft 1/4"-to-1/4" Audio Cable

## SPEAKER STAND, MOUNT & WIRES



### SS-689 Professional Heavy Duty Speaker Stands (Pair)

- 2 Steel Constructed Universal Mounting Bracket Included
- Height: 36"-72"
- Weight: 15 lbs each
- Load Capacity: 88lb (40Kg) ea



### CA-B615 15 FT - 18 AWG Banana -1/4" Speaker Cable

- Industry standard banana connector to 1/4" connector
- Works with all speakers requiring banana 1/4" connection
- 15 ft length
- 18 AWG high performance speaker cable provides the highest fidelity
- Can handle in excess of 600 watt outputs
- Extra rubber insulation to avoid crosstalk and damage



### BB-815 15 FT-18 AWG Speaker Cable with Dual Banana Connector

- Industry standard banana connector to 1/4" connector
- Works with all speakers requiring banana 1/4" connection
- 15 ft length
- 18 AWG high performance speaker cable provides the highest fidelity
- Can handle in excess of 600 watt outputs
- Extra rubber insulation to avoid crosstalk and damage



### QQ-215 15 FT-12 AWG Speaker Cable with 1/4" to 1/4" Jack Connector

- Industry standard 1/4" to 1/4" male connector
- 15 ft length
- 12 AWG high performance speaker cable provides the highest fidelity
- Can handle in excess of 600 watt outputs
- Extra rubber insulation to avoid crosstalk and damage



### NB-901 Speaker Mount

- Provides ceiling or wall mounting for speakers
- Compatible with most speakers
- Wall Mounting Screws are not included
- Speaker mount can be used for both ceiling and wall mount

## TV/ MONITOR STAND



### LCD-1

TV/ Monitor Stand

- 4 steps adjustable height (3ft-4.2ft)
- 5 wheels for easy maneuvering
- Able to rotate 360° & tilt 180°
- Able to bolt to floor with floor clamps
- Sleek all stainless steel
- Easily assembled
- Able to mount up to 20" LCD monitors
- Fits VESA 75mm/100mm TV mounts
- Lightweight (12lbs)

\*TV not included

## ROADCASE



### SP-R400

300-Watt Rackmountable Speaker Road Case

- 300 Watt Max Output (150W+150W)
- Houses two 8" woofers and four 2" tweeters
- 19" x 11.5" Space with front and back opening
- 2 speaker terminals
- Road Case Dimension : 30" x 21" x 18"
- Weight: 67lbs

## CD ORGANIZERS & SONGBOOKS



Top-Loading Nonstick Song Book Sheet Protector 3-Hole Binder



Deluxe Karaoke Song Book with 100 Sheet Protectors

## MEMORY CARD READER & SD CARDS



### 32-In-One USB 2.0 Memory Card Reader

- Supports USB 2.0 up to 480 Mbits/sec data transfer rate
- Support SDHC (Secure Digital High Capacity, SD 2.0) up to 32GB SD Card
- USB connection cable included
- No External power required
- LED light indicator
- Full "Plug & Play", Hot Swapping and high speed transfer
- Convenient, portable, shock and heat resistant
- Compatible with: Win98/ME/2000/XP/Mac OS



(SDHC)

- Class 4 - Minimum sustained data transfer speed of 4MB/sec
- Includes Power CD+G Player Pro for Windows



MicroSD Cards w/ Adapter & Power CD+G Player Pro for Windows

- Universally compatible
- Comes in 4, 8 & 16GB

## RCA CABLES



### CA-306

6 FT 3 RCA to 3 RCA Gold Plated A/V Cable



### CA-312

12 FT 3 RCA to 3 RCA Gold Plated A/V Cable

## TAMBOURINE



Add a little more fun while you're having karaoke night!

\*comes in assorted colors

## MIC WIND SOCKS



- The best tools to eliminate unnecessary pop and wind through microphones
- Two wind screens in each pack
- Fits most wired or wireless vocal microphones
- Comes in a vacuum sealed package
- Sterilized

## RECHARGEABLE BATTERIES & CHARGER



9V



AA



9V Battery Charger

**Acesonic**

# Club System Packages

We'll take the guesswork out of building a system that'll satisfy anybody. Call us and see what we can build for you!



## 600-Watt Amplifier, DSP Mixer + Diamond Speaker Professional Sound System

### System Includes

- KM-360 Professional DSP Mixer
- AM-600 Professional 600W Dual Channel Amplifier
- UHF-4000R Professional Rechargeable 4-Channel Module Wireless Microphone System
- (2) Diamond SP-582 250W Professional Speakers



## 600-Watt Professional Mixing Amplifier + Speaker Package

### System Includes

- AM-898 600W DSP Mixing Amplifier
- SP-450 300W Professional Speaker System
- UHF-1208XR Rechargeable Diversity 1000-Channel Dual Wireless Microphone System
- 16 AWG Speaker Wire 100ft



## MP3G Encoder & Player + 300-Watt Mixing Amplifier, Speakers & Wireless Microphones

### System Includes

- DGX-210 Multi-Format Player with Digital Recording & CDG to MP3G Converter
- AM-190 300W Mixing Amplifier
- SP-280 120W Speaker System
- VHF-8008 Dual Rechargeable Wireless Mic System



## 400-Watt Ultra Portable System with DGX-211 Player & UHF Wireless Mics

### System Includes

- DGX-211 HDMI Multi-Format Player with 4X CDG to MP3G Converter, Digital Recording
- PS-410 400W Professional 10" Powered Stereo Speaker System
- UHF-2600 UHF Dual Wireless Microphone System

**Acesonic**<sup>®</sup>

161 S. 8th Ave., City of Industry, CA 91746