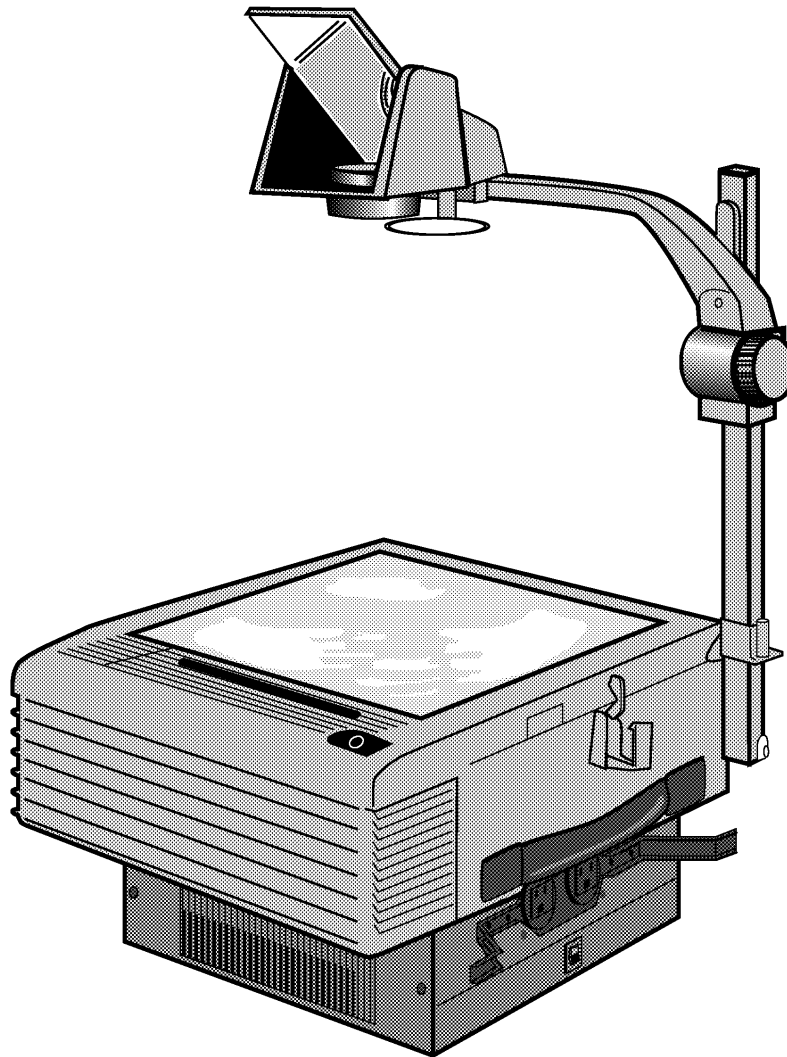


# 3M 9850 Overhead Projector

## Illustrated Parts Breakdown



**3M Visual Systems**

Boulevard de l'Oise  
95006 Cergy Pontoise Cedex  
France

Printed in U.S.A.

© 3M IPC, 2000. All Rights Reserved  
March 2000, 78-6970-6748-2 Rev. D

### Revision History

Revision bars placed in the margins ( | ) indicate where additions or changes to a parts identification list occurred. Items deleted from a parts identification list are indicated on this page only. Changes to illustrations are not indicated by revision bars, nor shown in this revision history.

The original issue of this manual and subsequent revisions are identified as follows:

**Issue date:** 8/95

Revision	Date	Page(s) Changed	Change
Original	August 1995	All pages	
Rev. B	April 1996	All pages	
Rev. C	March 1997	All pages	
Rev. D	March 2000	Page 2	Added new Quick Reference item: BLADE, Fan, 4.00 CW, 5 Blade (Version 2 only) 78-8099-8767-6. Added: (Version 1 only) to 115V/230V Crossflow Fans. Added: (Mitronic) to IGNITOR and added new IGNITOR (Schieder) 78-8073-3049-9. Added new: MOTOR, Fan, 100V (Version 2 only) 78-8099-8790-8, MOTOR, Fan, 120V (Version 2 only) 78-8099-8791-6, and MOTOR, Fan, 230V (Version 2 only) 78-8099-8792-4. Added: (Version 1 only) to Thermostat (FNT) 78-8079-9010-2. Added new item: Thermostat (FNT) (Version 2 only) 78-8079-8933-6.
		Page 11	Changed item 0 to 0A, and added new item 0B, Focus Arm Upgrade Kit (Europe only) (DY-0210-2704-9), and new item 0C, Focus Arm Upgrade Kit (78-8054-1821-3).
		Page 14	Modified the art to show Version 1 Crossflow Fan Assembly and added new Version 2 Fan Motor components.
		Page 15	Added: (Version 1 only) to items 4, 5A and 5B. Changed: item 6 from SCREW, Plastite, 6-19 x 5 x 16, 26-1002-4948-6 to SCREW, Plastite, M3.5 x 8, DY-1117-1909-1. Added: (Version 1 only) to 7A and added new 7B, THERMOSTAT, Safety, (FNT) (Version 2 only) 78-8079-8933-6. Added: new P/N and serial number break to item 12A from 78-8073-3135-6 BASE to 78-8097-3529-9 BASE ASSEMBLY – 9800 (Version 1 only). Added new item 12B 78-8099-8761-9 for Version 2.

**Revision History (Continued)**

<b>Revision</b>	<b>Date</b>	<b>Page(s) Changed</b>	<b>Change</b>
Rev. D	March 2000	Page 15 (Continued)	Added the following for Version 2: item 16, 78-8099-8767-6, item 17, 78-8099-8758-5, item 18A, 78-8099-8790-8, item 18B, 78-8099-8791-6, item 18C, 78-8099-8792-4, item 19, 26-1012-0255-9, and item 20, 78-8003-8728-0.
		Page 19	Added: (Mitronic) to IGNITOR, item 6A, and added new item 6B, IGNITOR (Schieder), 78-8073-3049-9.
		Page 21	Added: (Mitronic) to items 0A and 0B, and added new item 0C, FRONT HOUSING AND POWER SUPPLY ASSEMBLY, 190-250V (Schieder), 78-8073-3048-1.

## Introduction

This Illustrated Parts Breakdown (IPB) contains the information necessary to locate and identify specific parts of the 9850 Overhead Projector

## Part Numbers

All components available on a replacement basis are listed with their 3M identification number. The parts identification list opposite each illustration provides the description adequate to identify components.

## Locating and Identifying a Part

If physical appearance and general location of an item are known:

1. Use the Overview illustration to determine which section includes the item.
2. Refer to the section and locate the item on the exploded view illustration.

The part identification numbers provided in this manual are from the most current data available. Make sure part identification numbers for your component have not been amended by changes and updates made to your 9850 Overhead Projector.

## Machine Identification Plate

The Machine Identification Plate is located on the bottom side of each projector and lists specific information that is needed when calling for technical assistance or ordering parts.

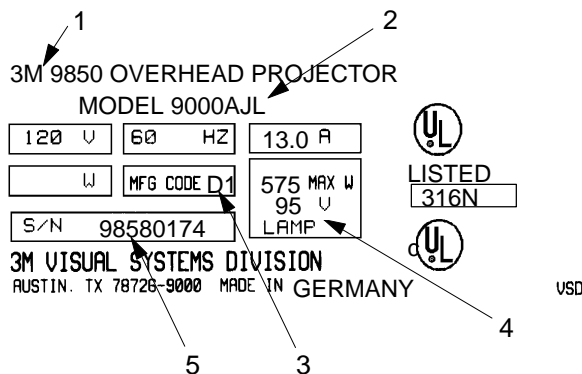


Figure 1. Machine Identification Plate

## Ordering Parts

When ordering parts, include part identification number, description, quantity and the following information:

1. Product Name: The specific version number of the projector.
2. Model Number/Alpha Code: The series number of the projector followed by a three or four character alpha code identifier. The Alpha Code indicates the design level, specific product characteristics, power cord or distribution specific to a country. A three character alpha code indicates this distribution is only for USA and Canadian distribution.
3. MFG Code: The MFG Code indicates the year and quarter the projector was built.

MFG Code			
Letter		Digit	
C	1995	1	Jan – Mar
D	1996	2	Apr – Jun
E	1997	3	Jul – Sep
F	1998	4	Oct – Dec

4. Lamp: The electrical rating of the lamp.
5. S/N: The serial number assigned to this projector.

## Revision Bars

Revision bars placed in the margins indicate where additions or changes occurred. Refer to the Revision History to identify specific additions and changes.

For part orders contact:

Dealers:	Refer to Dealers Guide
3M Subsidiaries:	Contact Export Operations
Retail Customers:	
FAX:	1-800-852-3917
Telephone:	1-800-328-2883

## Table of Contents

Section No.	Title	Page
	Quick Reference Parts Index .....	2
0 .....	Overview .....	3
1 .....	Triplet (Open) Head Assembly .....	5
2 .....	Flip-in Magnifier Assembly .....	7
3 .....	Top Cover .....	9
4 .....	Arm and Focus Assembly .....	11
5 .....	Folding Post and Handle Assembly .....	13
6 .....	Base Assembly .....	15
7 .....	Base Power Supply Assembly .....	17
8 .....	Optical Assembly .....	19
9 .....	Front Housing and Power Supply Assembly .....	21
10 .....	Wire Jumpers .....	23
Appendix A ...	Specifications .....	25

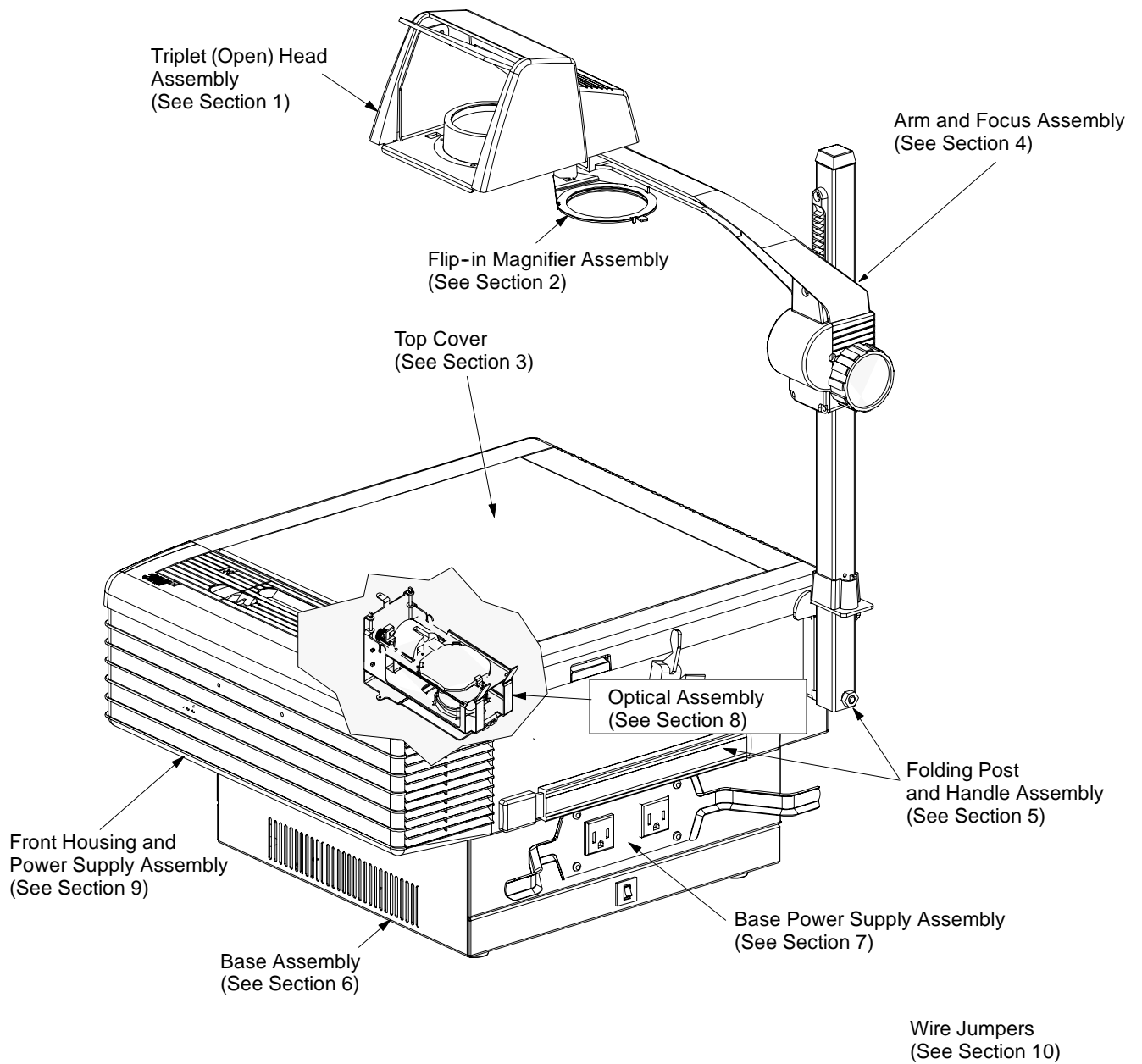
**IMPORTANT NOTICE**

**3M reserves the right to sell or furnish NEW OR RECONDITIONED PARTS.  
New and reconditioned parts are covered by the same 3M new parts limited warranty.**

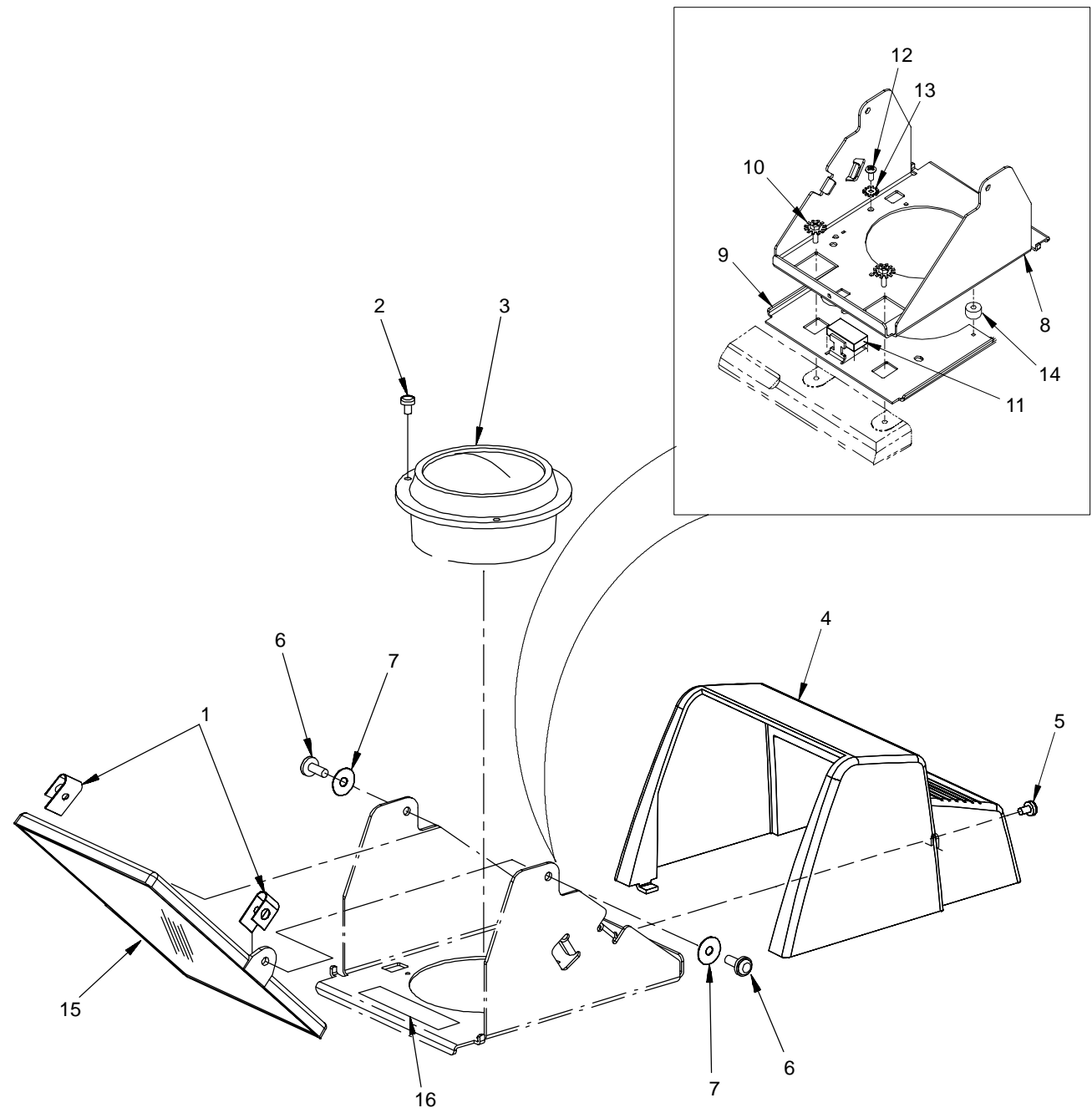
## Quick Reference Parts Index

Description	Part Number	Section Item	
		No.	No.
BLADE, Fan, 4.00 CW, 5 Blade	78-8099-8767-6	6	16
CRADLE, Post	78-8079-8890-8	5	4
FAN, Compact, Power Supply	78-8073-3133-1	9	17
FAN, Crossflow, 115V (Version 1 only)	Not Available	6	5A
FAN, Crossflow, 230V (Version 1 only)	Not Available	6	5B
FILTER, EMI	78-8073-3164-6	9	2
FOOT, Mounting	26-1008-5211-5	6	2
FUSE, 8 Amp, Slow Acting (AHLC and AHLS)	Not Available	9	3A
FUSE, 16 Amp, FST, Slow Acting (Use on all versions except AHLC and AHLS)	Not Available	9	3B
GLASS, Stage, Hardened (all except AJL)	78-8064-1473-2	3	7A
GLASS, Stage, Hardened (U.S. only) (AJL)	78-8079-8975-7	3	7B
HEAD ASSEMBLY, Triplet (includes Section 2, Flip-in Magnifier)	78-8097-3644-6	1	0
IGNITER (Mitronic)	78-8073-3167-9	8	6A
IGNITER (Schieder)	78-8073-3049-9	8	6B
KNOB, Color Tuning	78-8097-3565-3	8	24
KNOB, Focus	78-8064-1601-8	4	16
LAMP, Metal Halide, 575W	DY-0210-1120-9	8	14
LENS, Condenser	78-8073-3128-1	8	9
LENS, Fresnel Doublet, 133.8mm	78-8097-3637-0	3	13
LENS, H.E.A.R., Coated, 345mm, Triplet	Not Available	1	3
MIRROR ASSEMBLY, Triple	78-8054-1659-7	1	15
MOTOR, Fan, 100V (Version 2 only)	78-8099-8790-8	6	18A
MOTOR, Fan, 120V (Version 2 only)	78-8099-8791-6	6	18B
MOTOR, Fan, 230V (Version 2 only)	78-8099-8792-4	6	18C
POST, Folding, Long	78-8079-9088-8	4	15
STRAP, Handle	78-8079-9218-1	5	16
SWITCH, Hi/Low	78-8073-3291-7	9	21
THERMOSTAT	Not Available	8	16
THERMOSTAT, Safety (FNT) (Version 1 only)	78-8079-9010-2	6	7A
THERMOSTAT, Safety (FNT) (Version 2 only)	78-8079-8933-6	6	7B

**Section 0  
OVERVIEW**



Section 1  
TRIPLET (OPEN) HEAD ASSEMBLY

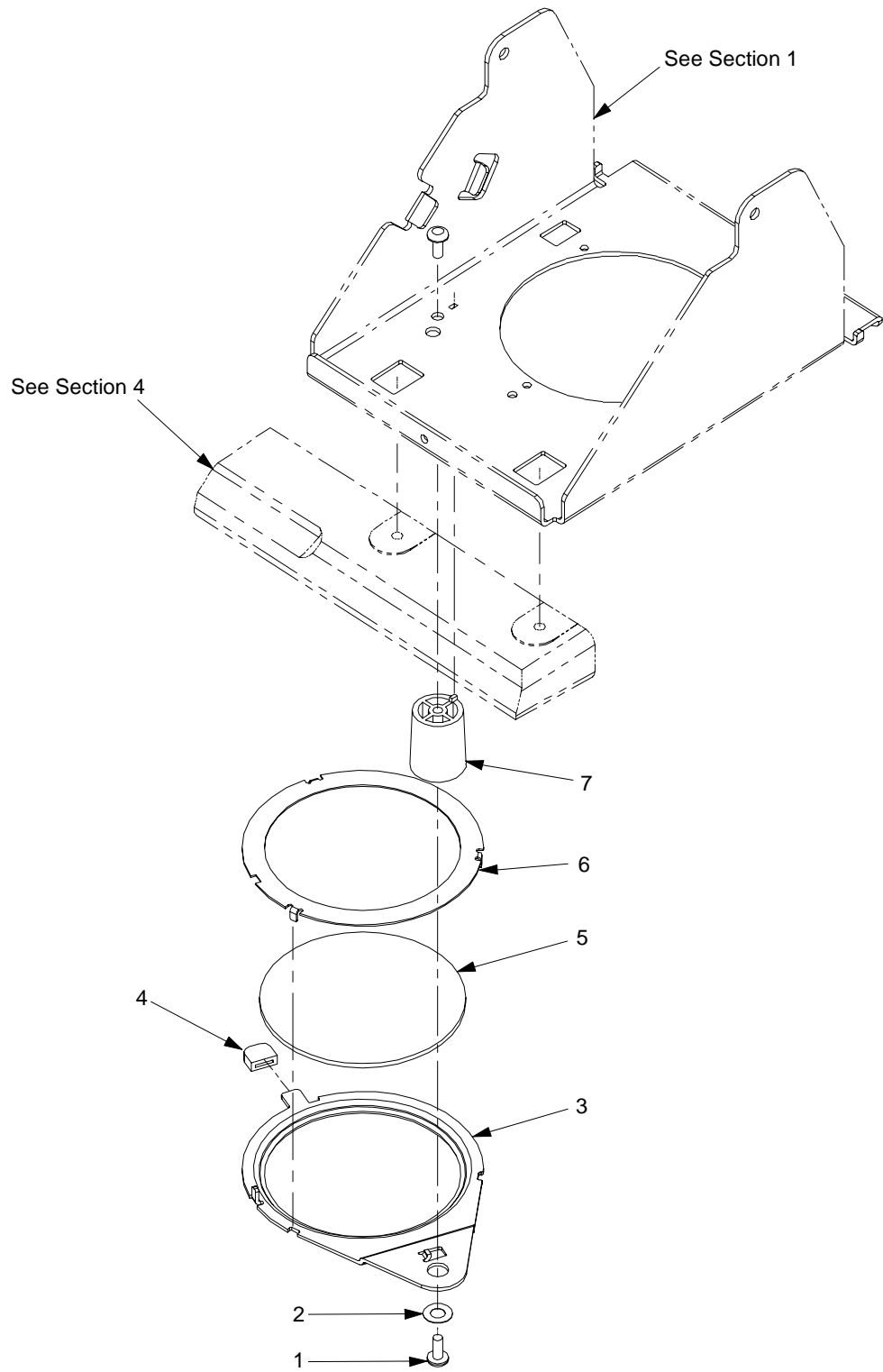




**Section 1**  
**TRIplet (OPEN) HEAD ASSEMBLY**

Item No.	Part Number	Description	Qty
0	78-8097-3644-6	HEAD ASSEMBLY, Triplet, (includes Section 2, Flip-in Magnifier)	1
1	78-8003-9762-8	NUT, U-Type, 8-32	1
2	26-1008-5596-9	SCREW, Taptite, M3 x 6mm, Black, Zinc	3
3	Not Available	LENS, H.E.A.R., Coated, 340mm, Triplet	1
4	78-8079-9017-7	COVER, Head	1
5	26-1008-5592-8	SCREW, Taptite, M3.5 x 8	2
6	26-1005-9570-6	SCREW, Mach. 8-32 x 7/16	1
7	26-1004-0460-2	WASHER, Plain, Nylon	1
8	78-8097-3657-8	BRACKET, Lens	1
9	78-8097-3658-6	BRACKET, Lens, Headmount	1
10	26-1003-6669-4	SCREW, Taptite, Sems, M4 x 10	2
11	78-8097-3666-9	PAD, Dampener	1
12	Not Available	SCREW, Taptite, M3.5 x 12	2
13	Not Available	WASHER, Lock, External	2
14	78-8097-3667-7	SPACER, Head, OUS	2
15	78-8054-1659-7	MIRROR ASSEMBLY, Triplet	1
16	Not Available	LABEL, Caution (Japan) (ABJL)	1

**Section 2**  
**FLIP-IN MAGNIFIER ASSEMBLY**

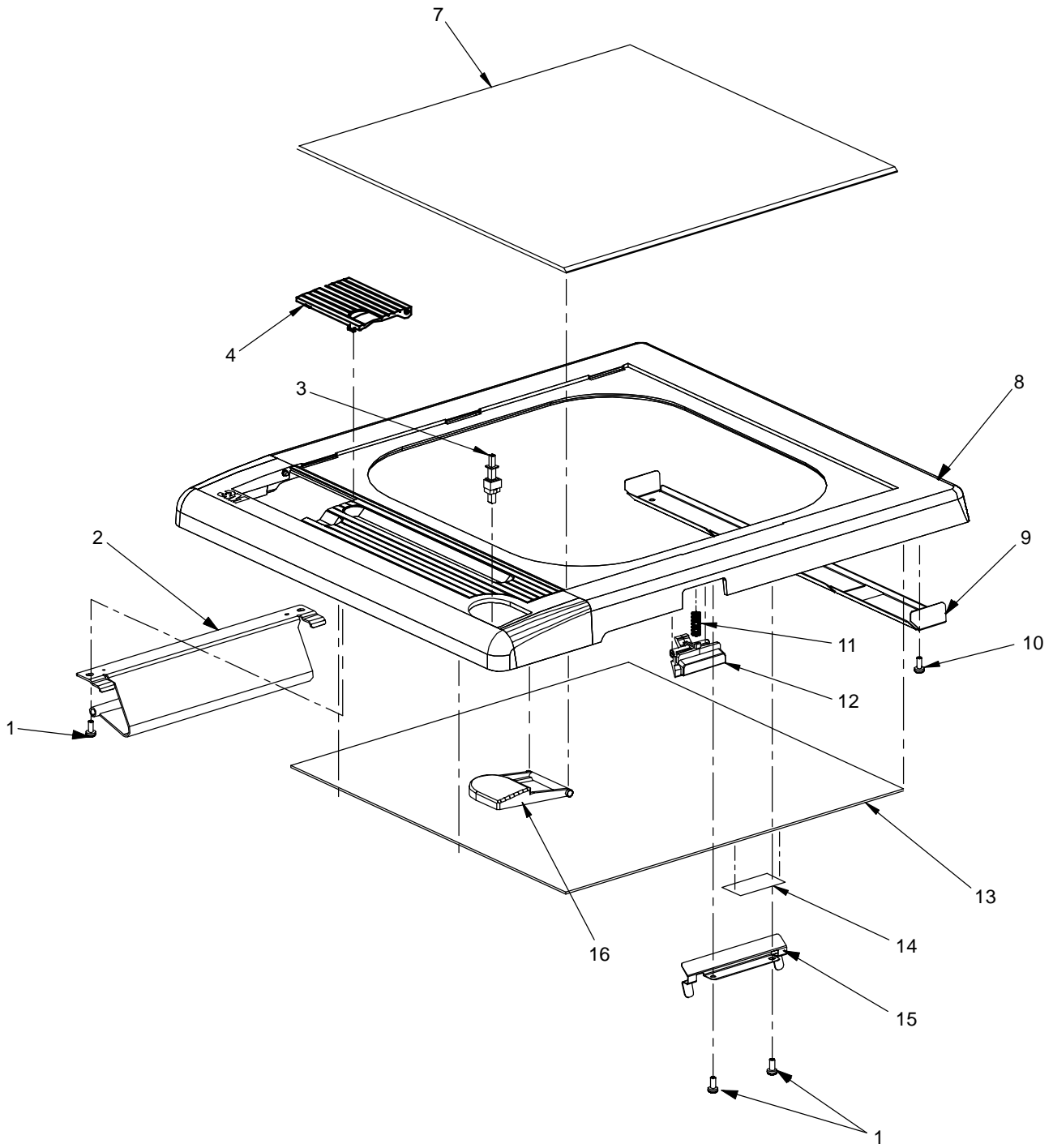


**Section 2**  
**FLIP-IN MAGNIFIER ASSEMBLY**

Item No.	Part Number	Description	Qty
0	(See Note 1)	FLIP-IN MAGNIFIER ASSEMBLY	1
1	26-1007-5427-9	SCREW, Plastite, 6-19 x 3/8	1
2	26-1009-9689-6	WASHER, Spring	1
3	78-8095-8269-1	BRACKET, Magnifier Lens	1
4	78-8097-3673-5	KNOB, Magnifier	1
5	78-8097-3522-4	LENS, Flip-in Magnifier (Coated)	1
6	78-8095-8270-9	RETAINER, Lens Magnifier	1
7	78-8095-8271-7	POST, Magnifier Pivot	1

Note 1. This item is available as an accessory part only. For U.S. (domestic) accessory information, call the 3M VSD Order Department in Austin at 1-800-328-1063. For European accessory information, fax the 3M Distribution Services International BV, Breda, Netherlands at 011-31-76-272-022. For international accessory information, fax the International Order Entry Department in St. Paul at (612) 736-5972.

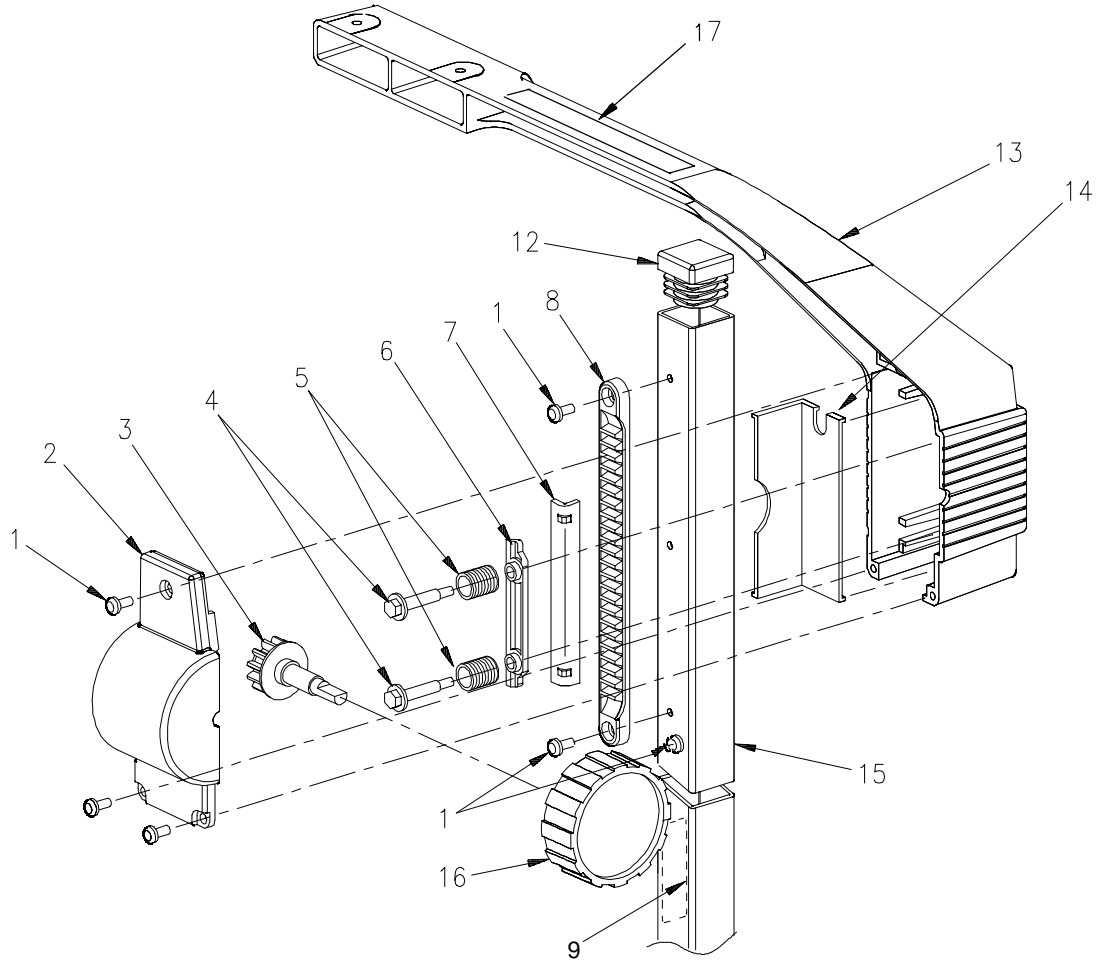
Section 3  
TOP COVER



**Section 3**  
**TOP COVER**

Item No.	Part Number	Description	Qty
1	26-1002-4948-6	SCREW, Plastite, 6-19 x 5/16	2
2	78-8079-8827-0	BRACKET, Hinge (Dual)	1
3	78-8064-1515-0	ACTUATOR, Switch Button	1
4	Not Available	DOOR, High/Low Switch	1
5 - 6	Not Used		
7A	78-8064-1473-2	GLASS, Stage, Hardened (all except AJL)	1
7B	78-8079-8975-7	GLASS, Stage, Hardened (U.S. only) (AJL)	1
8	78-8073-3138-0	COVER, Top	1
9	Not Available	BRACKET, Airflow, Top Cover	1
10	26-1000-0337-0	SCREW, Plastite, 6-19 x 3/8	2
11	78-8005-0481-9	SPRING, Compression	1
12	78-8079-8768-6	LATCH, Cover, Top	1
13	78-8097-3637-0	LENS, Fresnel Doublet, 133.8mm	1
14	78-8079-8939-3	LABEL, Caution, Lens	1
15	78-8079-8830-4	RETAINER, Fresnel	1
16	78-8079-8974-0	BUTTON, Switch, Plum	1

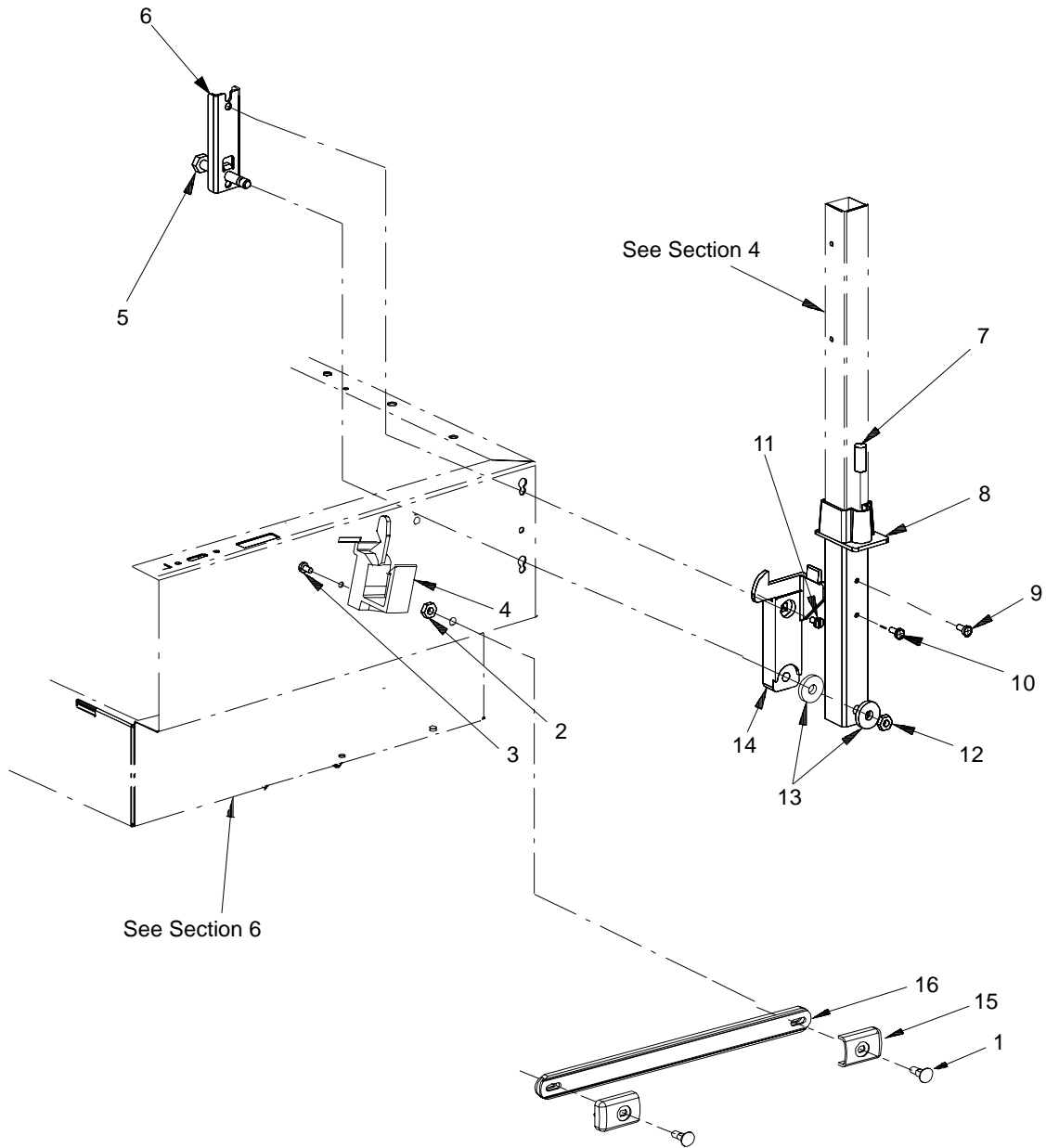
Section 4  
ARM AND FOCUS ASSEMBLY



**Section 4**  
**ARM AND FOCUS ASSEMBLY**

Item No.	Part Number	Description	Qty
0A	78-8073-2953-3	ARM and FOCUS ASSEMBLY	1
0B	DY-0210-2704-9	FOCUS ARM UPGRADE KIT (Europe only)	1
0C	78-8054-1821-3	FOCUS ARM UPGRADE KIT	1
1	26-1008-5592-8	SCREW, Taptite, M3.5 x 8	5
2	Not Available	CAP, Focus Arm	1
3	78-8079-8745-4	GEAR, Focus	1
4	78-8079-8746-2	SCREW, Shoulder	2
5	26-1009-4515-8	SPRING, Compression	2
6	78-8079-8747-0	BAR, Pressure	1
7	78-8079-8743-9	CLAMP, Friction	1
8	78-8079-8744-7	RACK, Focus	1
9	Not Available	LABEL, Post (Japan) (ABLJ)	1
10 - 11	Not Used		
12	26-1009--3653-8	CAP, Post (22 mm square)	1
13	78-8079-8960-9	ARM, Focus	1
14	78-8011-1220-8	PAD, Wear	1
15	78-8079-9088-8	POST, Folding, Long	1
16	78-8064-1601-8	KNOB, Focus	1
17	Not Available	LABEL, Caution, (Japan) (ABLJ)	1

Section 5  
FOLDING POST and HANDLE ASSEMBLY

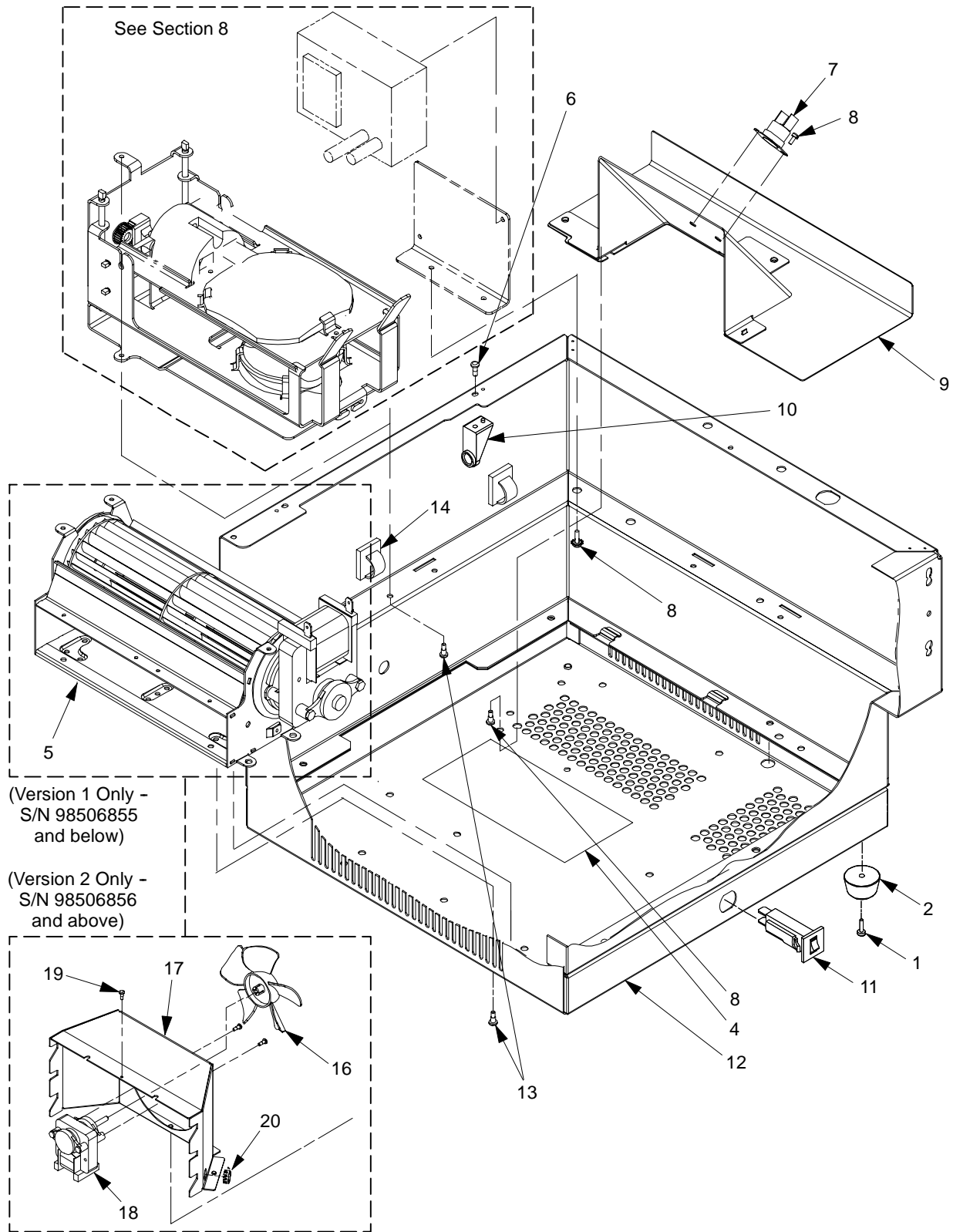




**Section 5**  
**FOLDING POST and HANDLE ASSEMBLY**

Item No.	Part Number	Description	Qty
1	78-8079-9219-9	SCREW, End Cap	2
2	26-1009-9966-8	NUT, Keps, 12-24	2
3	26-1002-4948-6	SCREW, Plastite, 6-19 x 5/16	2
4	78-8079-8890-8	CRADLE, Post	1
5	78-8079-8850-2	BOLT, Pivot	1
6	78-8079-8846-0	BRACKET, Pivot	1
7	26-1009-9847-0	SPRING, Compression	1
8	78-8079-8852-8	CLAMP, Post, Pivot	1
9	78-8079-8997-1	SCREW, Latch	1
10	26-1008-5592-8	SCREW, Taptite, M3.5 x 8	1
11	26-1002-5107-8	SCREW, Taptite, 10-32 x 5/8	1
12	26-1006-7602-7	NUT, Hex, 1/4-20, Nylon Stop Lock	1
13	26-1009-7284-8	WASHER	2
14	78-8079-8875-9	MOUNT, Post, Pivot	1
15	78-8079-9217-3	CAP, End	2
16	78-8079-9218-1	STRAP, Handle	1

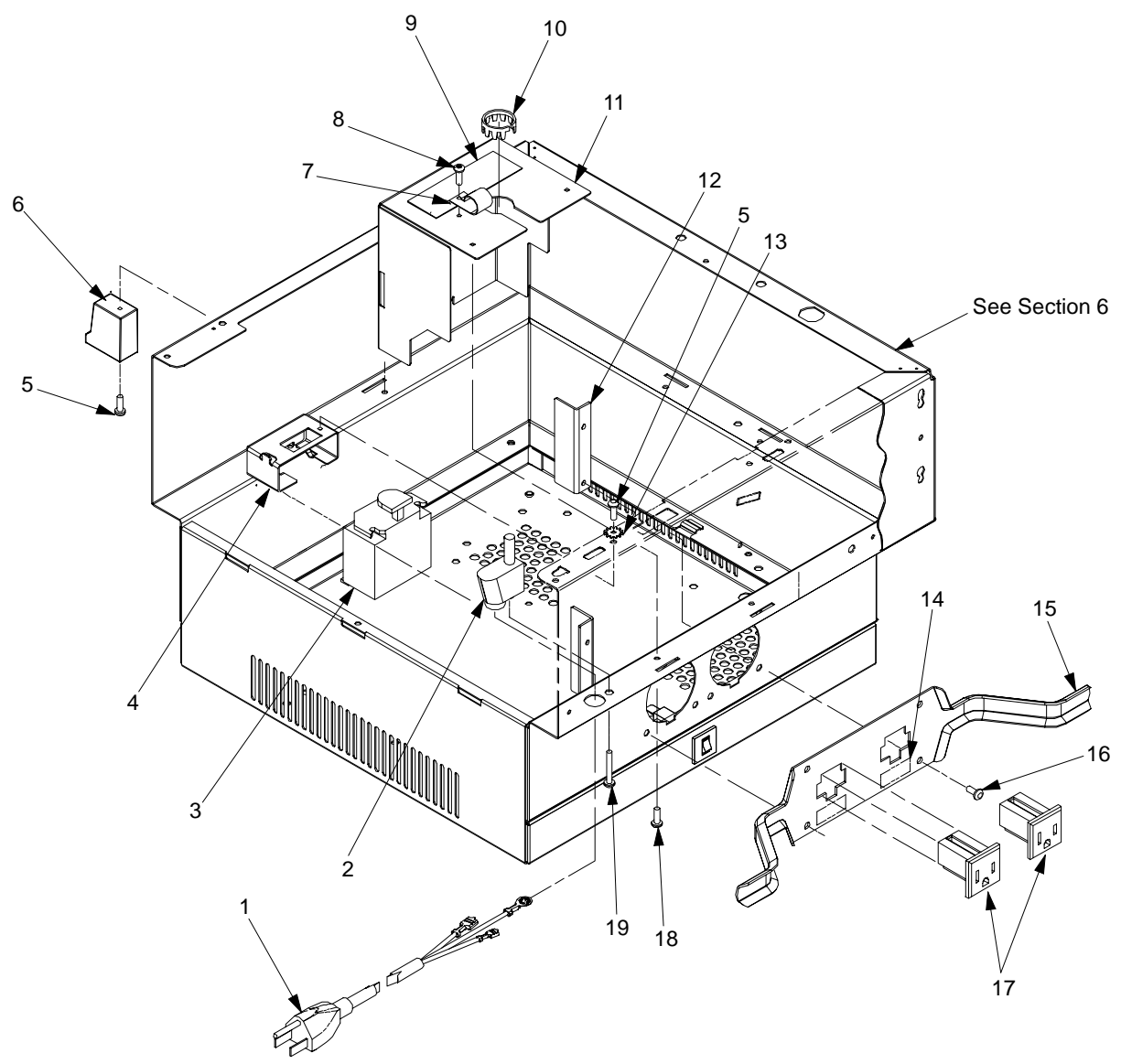
Section 6  
BASE ASSEMBLY



**Section 6**  
**BASE ASSEMBLY**

Item No.	Part Number	Description	Qty
1	78-8073-6942-2	SCREW, Foot	4
2	26-1008-5211-5	FOOT, Mounting	4
3	Not Used		
4	Not Available	TAPE, Heat (Body) (Version 1 only)	1
5A	Not Available	FAN, Crossflow, 115V (Version 1 only)	1
5B	Not Available	FAN, Crossflow, 230V (Version 1 only)	1
6	Not Available	SCREW, Plastite, M3.5 x 8	2
7A	78-8079-9010-2	THERMOSTAT, Safety (FNT) (Version 1 only)	1
7B	78-8079-8933-6	THERMOSTAT, Safety (FNT) (Version 2 only)	1
8	26-1005-7810-8	SCREW, Taptite, M3.5 x 6	6
9	78-8073-3143-0	BRACKET, Airflow, MH	1
10	78-8079-8817-1	PIVOT, Cover	2
11	26-1009-9195-4	CIRCUIT BREAKER, 5 Amp, Single Pole	1
12	78-8099-8761-9	BASE ASSEMBLY (Version 2 only) (S/N 98506856 and above)	1
13	26-1009-9931-2	SCREW, Taptite, Sems, M4 x 8	6
14	26-1004-9859-6	CLIP/CLAMP, Adhesive Backed	2
15	Not Available	TIE WRAP (Not shown)	4
16	78-8099-8767-6	BLADE, Fan, 4.00 CW, 5 Blade (Version 2 only)	1
17	78-8099-8758-5	DUCT, Fan, Mount (Version 2 only)	1
18A	78-8099-8790-8	MOTOR, Fan, 100V (Version 2 only)	1
18B	78-8099-8791-6	MOTOR, Fan, 120V (Version 2 only)	1
18C	78-8099-8792-4	MOTOR, Fan, 230V (Version 2 only)	1
19	Not Available	SCREW, Taptite, 4/40 x 3 (Version 2 only)	1
20	78-8003-8728-0	BUSHING, 0.5 Mounting Hole Diameter (Version 2 only)	1

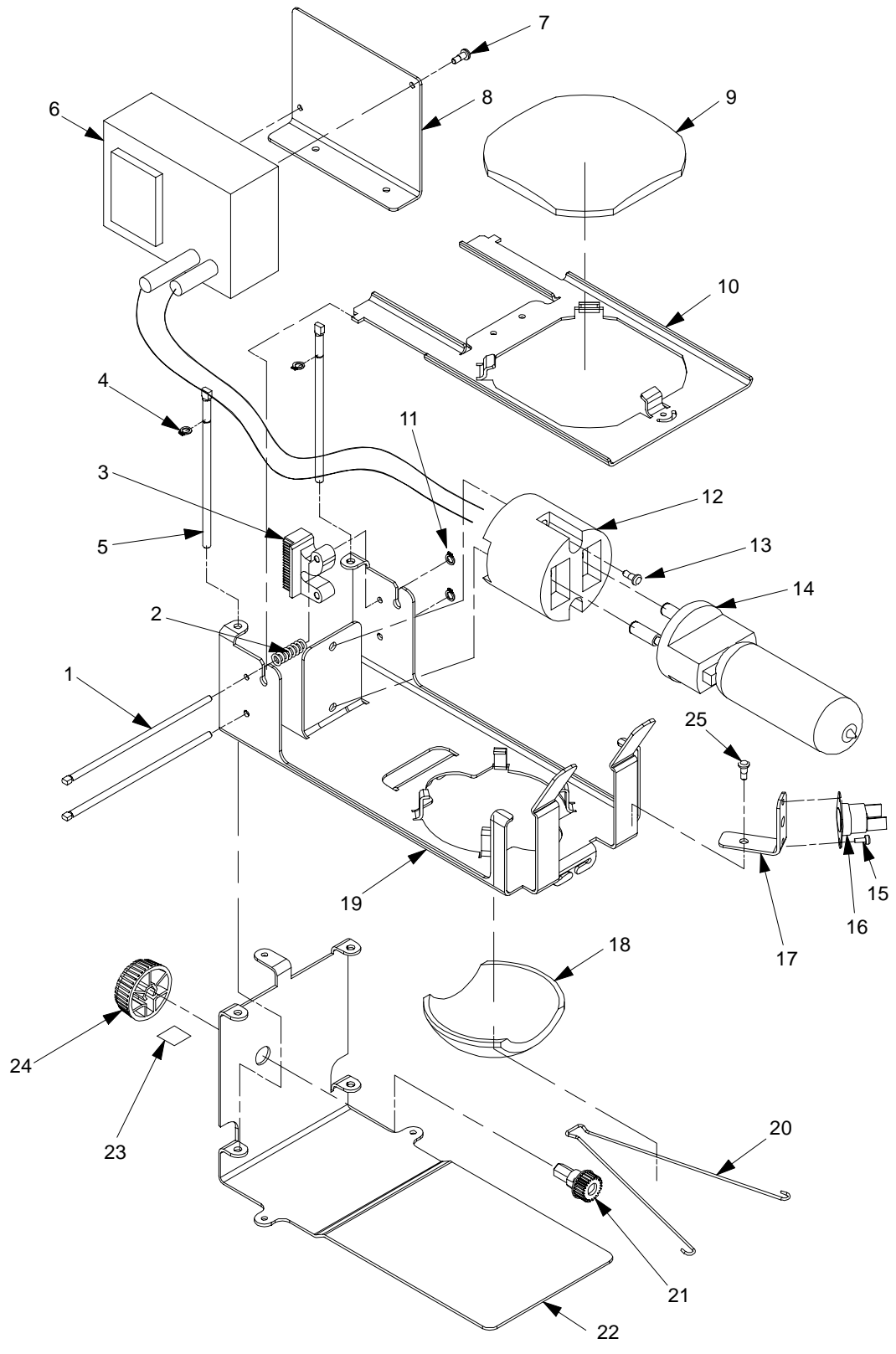
**Section 7**  
**BASE POWER SUPPLY ASSEMBLY**



**Section 7**  
**BASE POWER SUPPLY ASSEMBLY**

Item No.	Part Number	Description	Qty
1A	78-8097-3590-1	POWER CORD, Australia	1
1B	78-8073-3139-8	POWER CORD, Europe	1
1C	78-8097-3593-5	POWER CORD, Italy	1
1D	78-8073-3193-5	POWER CORD, Japan	1
1E	78-8073-3740-6	POWER CORD, United Kingdom	1
1F	78-8073-3188-5	POWER CORD, U.S.	1
1G	78-8073-3141-4	POWER CORD, Swiss	1
1H	78-8097-3594-3	POWER CORD, Phillippines	1
1I	78-8097-3592-7	POWER CORD, South Africa	1
2	DY-1160-2020-6	CLAMP, Cable	1
3	78-8015-5038-1	SWITCH, Interlock	1
4	78-8079-8795-9	BRACKET, Interlock Switch	1
5	26-1002-4948-6	SCREW, Plastite, 6-19 x 5/16	4
6	78-8079-9066-4	FOOT, Support, Side	2
7	Not Available	CLAMP, Wire, Micro, Plastic	1
8	26-1005-7810-8	SCREW, Taptite, M3.5 x 6	1
9A	78-8097-3622-2	LABEL, Caution (U.S.)	1
9B	78-8097-3596-8	LABEL, Caution (Outside U.S.)	1
10	Not Available	BUSHING, Split	1
11	Not Available-	BRACKET, Shield, Outlet	1
12	78-8097-3586-9	NUT PLATE	1
13	Not Available	WASHER, Lock, #6, External Tooth	2
14A	Not Available	LABEL, Socket, 2.5V	2
14B	78-8097-3631-3	LABEL, Socket, 100V	1
14C	78-8097-3629-7	LABEL, Socket, 120V	2
14D	Not Available	LABEL, Socket, 127V	1
15A	78-8097-3538-0	CORD WRAP, (U.S.)	1
15B	78-8097-3541-4	CORD WRAP, (Outside U.S.)	1
15C	78-8097-3648-7	CORD WRAP (Japan) (ABLJ)	1
16A	Not Available	SCREW, Plastite, 8-16 x 3/8 (U.S.)	4
16B	Not Available	SCREW, Taptite, M4 x 6 (Outside U.S.)	4
17A	26-1009-9118-6	OUTLET SOCKET, Power, U.S./Taiwan (AJL and AALT)	2
17B	26-1009-9110-3	OUTLET SOCKET, Power, Australia (AHLA)	2
17C	26-1009-9105-3	OUTLET SOCKET, Power, Europe (AHLs and AHLK)	2
17D	26-1011-2519-8	OUTLET SOCKET, Power, Japan (ABLJ)	2
17E	26-1009-9548-4	OUTLET SOCKET, Power, Italy (AHLc)	2
17F	Not Available	OUTLET SOCKET, Power, Swiss (AHLZ)	2
17G	26-1009-9107-9	OUTLET SOCKET, Power, United Kingdom (AHLU)	2
18	Not Available	SCREW, Taptite, Torx, M3.5 x 6	2
19A	26-1008-5205-7	SCREW, Plastite, Torx, 6-19 x 1 (AHLs, AHLU, AHLZ and ABLJ)	1
19B	26-1003-3716-6	SCREW, Plastite, 6-19 x 1 (AJL, AHLA, AHLK, AALT and AHLc)	1

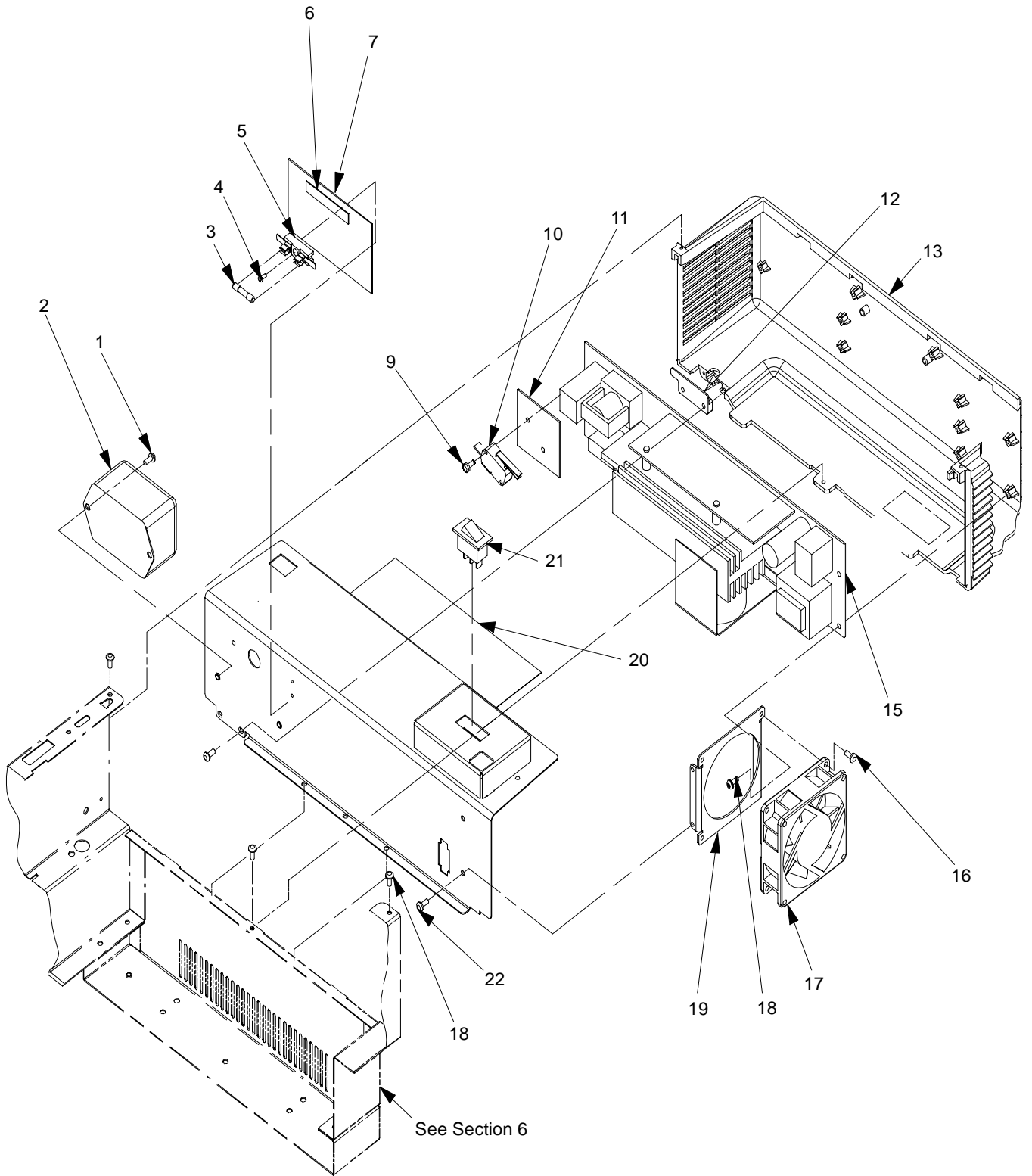
Section 8  
OPTICAL ASSEMBLY



**Section 8**  
**OPTICAL ASSEMBLY**

Item No.	Part Number	Description	Qty
0	78-8073-3120-8	OPTICAL ASSEMBLY	1
1	78-8073-3124-0	ROD, Color Tuning	2
2	12-7992-2440-2	SPRING, Extension	1
3	78-8097-3579-4	GEAR, Track	1
4	DY-1142-0071-9	E-RING	2
5	78-8073-3125-7	ROD, Gear Track	2
6A	78-8073-3167-9	IGNITER (Mitronic)	1
6B	78-8073-3049-9	IGNITOR (Schieder)	1
7	Not Available	SCREW, M3 x 8	2
8	Not Available	BRACKET, Igniter	1
9	78-8073-3128-1	LENS, Condenser	1
10	78-8073-3123-2	BRACKET, Condenser	1
11	26-1005-7814-0	RING, Retaining	4
12	78-8073-3130-7	SOCKET, Lamp	1
13	Not Available	SCREW, Taptite, M4 x 25	2
14	DY-0210-1120-9	LAMP, Metal Halide, 575W (If ordering in the U.S. call 1-800-447-0388.)	1
15	26-1005-7810-8	SCREW, Taptite, M3.5 x 6	3
16	78-8073-3174-5	THERMOSTAT	1
17	Not Available	BRACKET, Thermostat	1
18	78-8073-3127-3	REFLECTOR	1
19	78-8073-3122-4	BRACKET, Reflector	1
20	78-8079-8896-5	SPRING, Retaining, Reflector (EVD)	1
21	78-8073-3126-5	GEAR, Color Tuning	1
22	78-8073-3121-6	BRACKET, Light Source	1
23	78-8065-8187-8	RETAINER, Knob	1
24	78-8097-3565-3	KNOB, Color Tuning	1
25	26-1005-7810-8	SCREW, Taptite, M3.5 x 5	1

Section 9  
FRONT HOUSING AND POWER SUPPLY ASSEMBLY

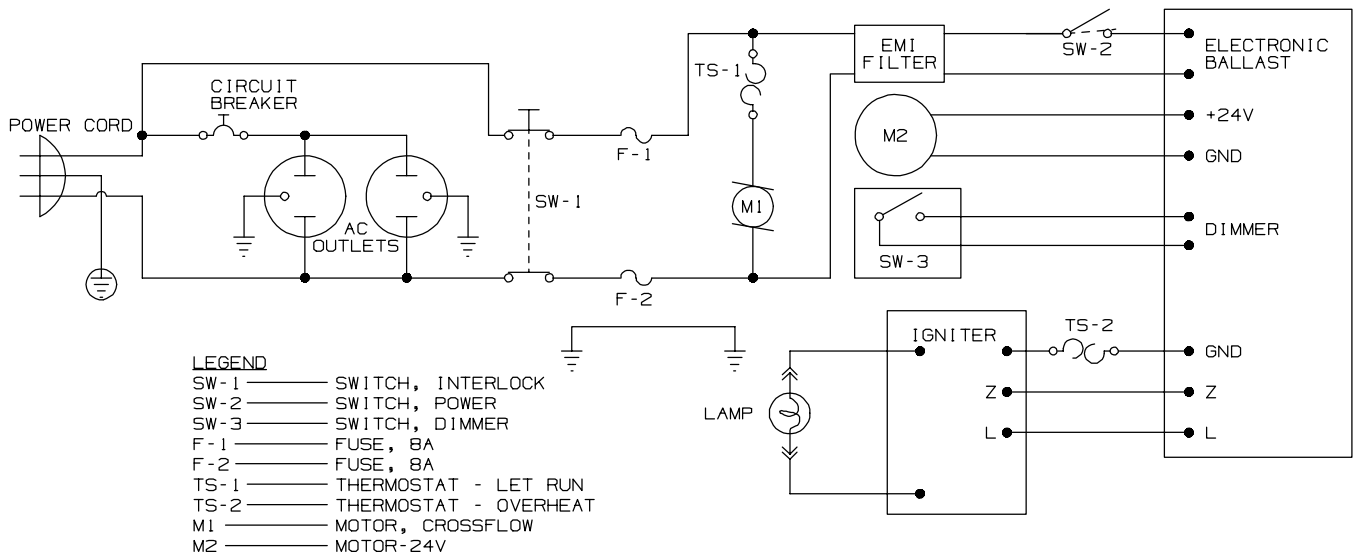
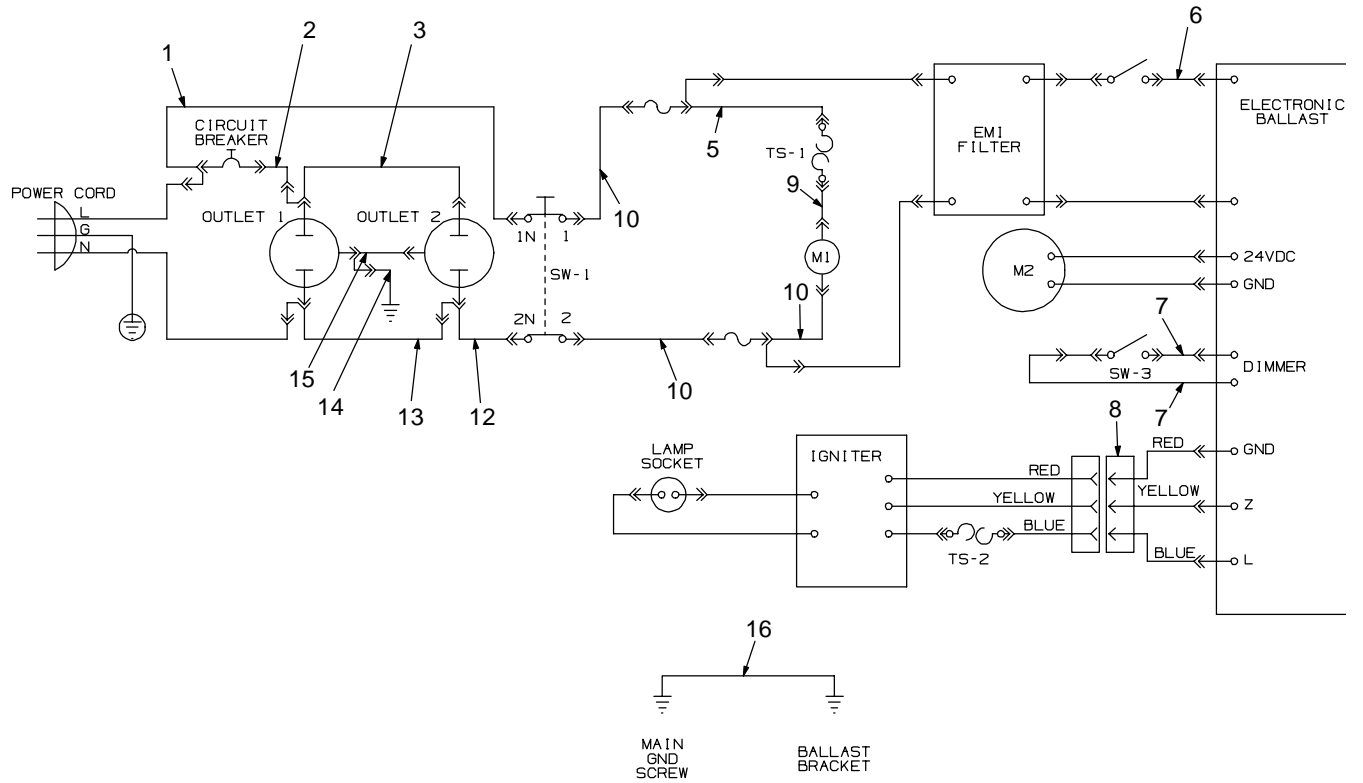




**Section 9**  
**FRONT HOUSING AND POWER SUPPLY ASSEMBLY**

Item No.	Part Number	Description	Qty
0A	78-8073-3187-7	FRONT HOUSING AND POWER SUPPLY ASSEMBLY, 90V - 130V (Mitronic)	1
0B	78-8073-3165-3	FRONT HOUSING AND POWER SUPPLY ASSEMBLY, 190V - 250V (Mitronic)	1
0C	78-8073-3048-1	FRONT HOUSING AND POWER SUPPLY ASSEMBLY, 190 - 250V (Schieder)	1
1	26-1009-9931-2	SCREW, Taptite, M4 x 8, Sems	2
2	78-8073-3164-6	FILTER, EMI	1
3A	Not Available	FUSE, 8 Amp, AT (AHLC and AHLS)	2
3B	Not Available	FUSE, 16 Amp, SPT, T6, 3x32 (Use on all versions except AHLC and AHLS)	2
4	Not Available	SCREW, Taptite, M3 x 6	2
5A	Not Available	FUSEHOLDER, 8 Amp	2
5B	Not Available	FUSEHOLDER, 16 Amp	2
6A	Not Available	LABEL, Fuse, Replacement (Use on all versions except AALB, AALT, ABLJ, AJL)	1
6B	Not Available	LABEL, Fuse, Replacement, 16 Amp (Japan) (AJL, AALB, AALT and ABLJ)	1
7A	78-8073-3169-5	INSULATOR, Fuse, 8 Amp	1
7B	78-8073-3028-3	INSULATOR, Fuse, 16 Amp	1
8	Not Used		
9	26-1002-6207-5	SCREW, Taptite, M3 x 12	4
10	Not Available	SWITCH, On/Off	1
11	Not Available	INSULATOR, Switch	1
12	78-8079-8797-5	PLATE, Cord, Small (Gray)	1
13	78-8079-8752-0	HOUSING, Lamp Module	1
14	Not Used		
15	Not Available	BALLAST, Electronic (Order complete assembly) (item 0A or 0B)	REF
16	26-1005-7810-8	SCREW, Taptite, M3.5 x 6	4
17	78-8073-3133-1	FAN, Compact, Power Supply	1
18	26-1002-4948-6	SCREW, Plastite, 6-19 x 5/16	8
19	78-8073-3150-5	BRACKET, Fan	1
20	78-8073-3168-7	INSULATOR, Electronic Ballast	1
21	78-8073-3291-7	SWITCH, Hi/Low	1
22	26-1008-5592-8	SCREW, Taptite, M3.5 x 8	2
23	Not Used		

**Section 10**  
**WIRE JUMPERS**



**Section 10**  
**WIRE JUMPERS**

Item No.	Part Number	Description	Qty
1	78-8097-3625-5	JUMPER, 12", Black	1
2A	78-8097-3620-6	JUMPER, 5", Black (AHLS, AHLZ, AHLK and ALHG)	1
2B	78-8097-3621-4	JUMPER, 5", Black (AHLA, AHLC, AHLU and ALHN)	1
2C	78-8097-3619-8	JUMPER, 5", Black (AJL, AALB, AALT, ABLJ and ARLP)	1
3A	78-8097-3604-0	JUMPER, 4.5", Black (AALB, AJL, ABLJ, AALT and ARLP)	1
3B	78-8097-3605-7	JUMPER, 4.5", Black (AJL, AHLS, AHLZ, AHLK and ALHG)	1
3C	78-8097-3606-5	JUMPER, 3.5", Black (AHLA, AHLC, AHLN and AHLU)	1
4	Not Used		
5	Not Available	JUMPER, 16", Black	1
6	Not Available	JUMPER, 6", Brown	1
7	Not Available	JUMPER, 10", White	2
8	Not Available	JUMPER, Connector, Harness	1
9	Not Available	JUMPER, 12", Black	1
10	Not Available	JUMPER, 13.5", Black	3
11	Not Used		
12A	78-8097-3554-7	JUMPER, 11", Double, White (AJL, AALB, AALT, ABLJ and ARLP)	1
12B	78-8097-3555-4	JUMPER, 12", White (AHLG, AHLK, AHLS, and AHLU)	1
13A	78-8097-3608-1	JUMPER, Power Cord Socket, 4.5", White (AHLG, AHLK, AHLS and AHLZ)	1
13B	78-8097-3609-9	JUMPER, Power Cord Socket, 3.5", White (AHLA, AHLC, AHLN and AHLU)	1
14A	Not Available	JUMPER, 5.5", Green/Yellow (AJL and AALT)	1
14B	Not Available	JUMPER, 5.5", Green/Yellow (AHLS, AHLZ, AHLK)	1
14C	Not Available	JUMPER, 5.5", Green/Yellow (AHLA, AHLC, AHLN and AHLU)	1
15A	78-8097-3610-7	JUMPER, 4.5", Green/Yellow (AJL)	1
15B	78-8097-3611-5	JUMPER, 5.5", Green/Yellow (AHLK, AHLS, AHLZ)	1
15C	78-8097-3612-3	JUMPER, 3.5", Green/Yellow (AHLA, AHLC, AHLN and AHLU)	1
16	Not Available	JUMPER, 14.5", Green/Yellow	1

**This page intentionally left blank.**

**Appendix A  
SPECIFICATIONS**

Model Description	Country	Power Cord	Model Alpha	Stock Number	Voltage	Agency	Stage Size	Head Type	Lampchanger	Color Tuning	Post Type	Lamp Type	Handle	Lamp Control	Lamps Installed	Fresnel	Power	Fuse	Cord Wrap
M9000 Metal Halide Overhead Projector	Australia	Australian	9850 AHLA	78-9236-6117-3	190V - 250V	Pending	A4	Open Triplet	No	External	Folding	Metal Halide 95V 525W	Yes	Auto Dimmer	1	9800 Dual Element Clear	Solid State	8A	Yes
M9000 Metal Halide Overhead Projector	Chile	Italian	9850 AHLC	78-9236-6121-5	190V - 250V	N/A	A4	Open Triplet	No	External	Folding	Metal Halide 95V 525W	Yes	Auto Dimmer	1	9800 Dual Element Clear	Solid State	8A	Yes
M9000 Metal Halide Overhead Projector	Europe	Denmark	9850 AHLW	78-9236-6182-7	190V - 250V	UL	A4	Open Triplet	No	External	Folding	Metal Halide 95V 525W	Yes	Auto Dimmer	1	9800 Dual Element Clear	Solid State	8A	Yes
M9000 Metal Halide Overhead Projector	Europe	European	9850 AHLS	78-9236-6045-6	190V - 250V	CE	A4	Open Triplet	No	External	Folding	Metal Halide 95V 525W	Yes	Auto Dimmer	1	9800 Dual Element Clear	Solid State	8A	Yes
M9000 Metal Halide Overhead Projector	India	South Africa	9850 AHLG	78-9236-6303-9	190V - 250V	Pending	A4	Open Triplet	No	External	Folding	Metal Halide 95V 525W	Yes	Auto Dimmer	1	9800 Dual Element Clear	Solid State	8A	Yes
M9000 Metal Halide Overhead Projector	Japan	Japan	9850 ABLJ	78-9236-6118-1	90V - 130V	Pending	A4	Open Triplet	No	External	Folding	Metal Halide 95V 525W	Yes	Auto Dimmer	1	9800 Dual Element Clear	Solid State	16A	Yes
M9000 Metal Halide Overhead Projector	Korea	Japan	9850 AHLK	78-9236-6119-9	190V - 250V	Pending	A4	Open Triplet	No	External	Folding	Metal Halide 95V 525W	Yes	Auto Dimmer	1	9800 Dual Element Clear	Solid State	8A	Yes
M9000 Metal Halide Overhead Projector	New Zealand	Australia	9850 AHLN	78-9236-6216-3	190V - 250V	Pending	A4	Open Triplet	No	External	Folding	Metal Halide 95V 525W	Yes	Auto Dimmer	1	9800 Dual Element Clear	Solid State	8A	Yes
M9000 Metal Halide Overhead Projector	Swiss	Swiss	9850 AHLZ	78-9236-6047-2	190V - 250V	CE	A4	Open Triplet	No	External	Folding	Metal Halide 95V 525W	Yes	Auto Dimmer	1	9800 Dual Element Clear	Solid State	8A	Yes
M9000 Metal Halide Overhead Projector	Taiwan	Japan	9850 AALT	78-9236-6120-7	90V - 130V	N/A	A4	Open Triplet	No	External	Folding	Metal Halide 95V 525W	Yes	Auto Dimmer	1	9800 Dual Element Clear	Solid State	16A	Yes
M9000 Metal Halide Overhead Projector	United Kingdom	United Kingdom	9850 AHLU	78-9236-6046-4	190V - 250V	CE	A4	Open Triplet	No	External	Folding	Metal Halide 95V 525W	Yes	Auto Dimmer	1	9800 Dual Element Clear	Solid State	8A	Yes
M9000 Metal Halide Overhead Projector	United States/ Canada	United States	9850 AJL	78-9236-6074-6	90V - 130V	UL	A4	Open Triplet	No	External	Folding	Metal Halide 95V 525W	Yes	Auto Dimmer	1	9800 Dual Element Clear	Solid State	16A	Yes

### **Important Notice**

All statements, technical information, and recommendations related to 3M's products are based on information believed to be reliable, but the accuracy or completeness is not guaranteed. Before using this product, you must evaluate it and determine if it is suitable for your intended application. You assume all risks and liability associated with such use.

Any statements related to the product which are not contained in 3M's current publications, or any contrary statements contained on your purchase order shall have no force or effect unless expressly set forth in a written agreement signed by an authorized officer of 3M.



**Visual Systems Division**

6801 River Place Boulevard  
Austin, Texas 78726-9000



*Printed on 50% recycled  
waste paper, including 10%  
post-consumer waste paper.*

Printed in U.S.A.

©3M 3/00 78-6970-6748-2 Rev. D